

TRACT 36506 - Plaquemines Parish, Louisiana

A portion of all State owned lands and water bottoms located with the boundaries of the Pass-A-Loutre Wildlife Management Area as defined by the Department of Wildlife and Fisheries incorporating a title opinion from the Office of the Governor dated August 3, 1998, not presently under mineral lease by the State of Louisiana on July 14, 2004, all as set forth following: Beginning at a point having Coordinates of X = 2,692,682.48 and Y = 184,004.06; Thence East 8,129.78 feet to a point having Coordinates of X = 2,700,812.26 and Y = 184,004.06; Thence South 6,458.22 feet to a point having Coordinates of X = 2,700,812.26 and Y = 177,545.84; Thence South 68 degrees 18 minutes 00 seconds West 8,749.86 feet to a point on the most northern boundary of State Lease No. 214 having Coordinates of X = 2,692,682.48 and Y = 174,310.60; Thence North 9,693.47 feet to point of beginning, containing approximately **503 net acres**, containing approximately 1,507 gross acres, **LESS AND EXCEPT** any privately owned land that may be located within the above described Tract, if any, comprising approximately 1,004 acres, leaving a total of 503 net acres of State owned land and water bottoms within the above described Tract, all as more particularly outlined on a plat on file in the Office of Mineral Resources, Department of Natural Resources. All bearings, distances and coordinates are based on Louisiana Coordinate System of 1927, (South Zone).

NOTE: The above description of the Tract nominated for lease has been provided and corrected, where required, exclusively by the nomination party. Any mineral lease selected from this Tract and awarded by the Louisiana State Mineral Board shall be without warranty of any kind, either express, implied, or statutory, including, but not limited to, the implied warranties of merchantability and fitness for a particular purpose. Should the mineral lease awarded by the Louisiana State Mineral Board be subsequently modified, cancelled or abrogated due to the existence of conflicting leases, operating agreements, private claims or other future obligations or conditions which may affect all or any portion of the leased Tract, it shall not relieve the Lessee of the obligation to pay any bonus due thereon to the Louisiana State Mineral Board, nor shall the Louisiana State Mineral Board be obligated to refund any consideration paid by the Lessor prior to such modification, cancellation, or abrogation, including, but not limited to, bonuses, rentals and royalties.

NOTE: This tract is located in the Pass-A-Loutre WMA under the jurisdiction of the Louisiana Department of Wildlife and Fisheries which has promulgated rules and regulations for the protection of game and wildlife on the aforesaid Tract and, therefore, shall be subject to said rules and regulations, a copy of which shall be attached to the mineral lease. In addition to the specific rules and regulations applicable, the following shall apply regarding operations under this mineral lease:

1. No activities will be allowed without written authorization from the Louisiana Department of Wildlife and Fisheries.

2. Proposed projects will be evaluated on a case by case basis. Modifications to proposed project features including but not limited to access routes, spoil placement, well sites, flowlines and appurtenant structures may be required by the Department of Wildlife and Fisheries.
3. Compensatory mitigation will be required to offset unavoidable wetland impacts. Mitigation will be required to offset avoidable wetland impacts.
4. Removal of all structures, facilities and equipment will be required within 120 days of abandonment unless otherwise agreed to by the Louisiana Department of Wildlife and Fisheries.
5. No activities will be allowed during the hunting season unless approved by the Department.
6. Compliance with the said WMA regulations will be required unless otherwise specified by the Department.
7. Prior to submitting applications for wetland permits to Federal and State permitting agencies the lease holder shall coordinate project details with the Louisiana Department of Wildlife and Fisheries, Fur and Refuge Division. Contact person for the Department will be Mike Windham at (504) 568-5886.

NOTE: The Department will require a minimum bonus of \$350 per acre and a minimum royalty of 25%.

NOTE: The State of Louisiana does hereby reserve, and this lease shall be subject to, the imprescriptible right of surface use in the nature of a servitude in favor of the Department of Natural Resources, including its Offices and Commissions, for the sole purpose of implementing, constructing, servicing and maintaining approved coastal zone management and/or restoration projects. Utilization of any and all rights derived under this lease by the mineral lessee, its agents, successors or assigns, shall not interfere with nor hinder the reasonable surface use by the Department of Natural Resources, its Offices or Commissions, as herein above reserved.

NOTE: The Department of Wildlife and Fisheries has designated certain areas in the coastal waters of the State of Louisiana as Oyster Seed Bed Areas. The exact location of those Seed Bed Areas must be obtained from the Department of Wildlife and Fisheries and any work done under a mineral lease from the State of Louisiana may necessarily be conducted in conformity with the rules and regulations promulgated by the said Department of Wildlife and Fisheries for Oyster Seed Bed Areas.

Applicant: Coastal Oil & Gas Properties, Inc.

Bidder	Cash Payment	Price/Acre	Rental	Oil	Gas	Other

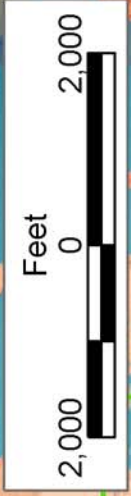


PLAQUEMINES PARISH

MISSISSIPPI RIVER

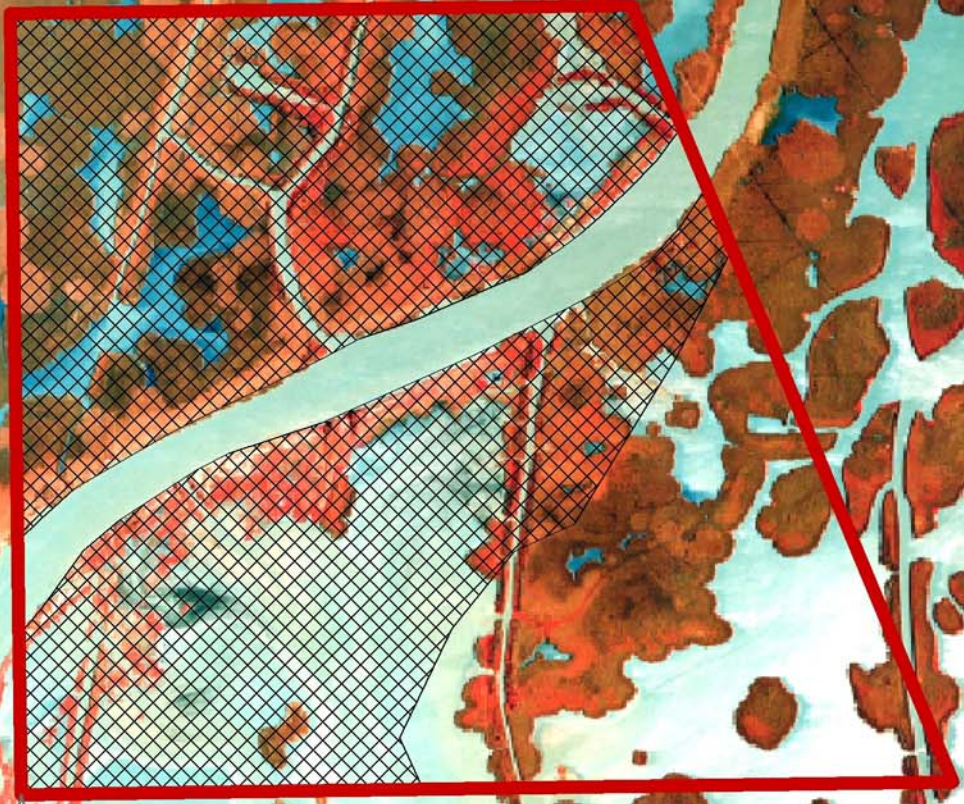
P.O.B.
X=2,692,682.48
Y=184,004.06

PASS A LOUTRE WMA



SL 214

PRIVATE OWNERSHIP



TRACT 36507 - Plaquemines Parish, Louisiana

A portion of all State owned lands and water bottoms located with the boundaries of the Pass-A-Loutre Wildlife Management Area as defined by the Department of Wildlife and Fisheries incorporating a title opinion from the Office of the Governor dated August 3, 1998, not presently under mineral lease by the State of Louisiana on July 14, 2004, all as set forth following: Beginning at a point on the Northern boundary of Pass A Loutre Refuge having Coordinates of X = 2,682,868.73 and Y = 183,113.20; thence East 2,813.43 feet to a point having Coordinates of X = 2,685,682.16 and Y = 183,113.20; thence South 7,975.37 feet to a point having Coordinates of X = 2,685,682.16 and Y = 175,137.84; thence West 3,163.14 feet to a point having Coordinates of X = 2,682,519.02 and Y = 175,137.84; thence South 1,019.93 feet to a Northwestern corner of State Lease No. 214, as amended, having Coordinates of X = 2,682,519.02 and Y = 174,117.91; thence with the Western boundary of said State Lease No. 214 the following courses: South 01 degrees 05 minutes 07 seconds East 1,320.00 feet to a point having Coordinates of X = 2,682,544.02 and Y = 172,798.14; South 88 degrees 54 minutes 50 seconds West 2,640.00 feet to a point and corner having Coordinates of X = 2,679,904.49 and Y = 172,748.10; thence West 2,539.09 feet to a point having Coordinates of X = 2,677,365.40 and Y = 172,748.10; thence North 5,847.97 feet to a point on the Northern boundary of Pass A Loutre Refuge having Coordinates of X = 2,677,365.40 and Y = 178,596.07; thence Northeasterly with the said Refuge boundary along an arc to the left with a radius of 10,510.00 feet and a long cord bearing North 50 degrees 37 minutes 15 seconds East 7,119.76 feet to the point of beginning, **LESS AND EXCEPT** that acreage contained within State Lease No. 3942, as amended; State Lease No. 8063, as amended; and State Lease No. 12820, as amended, containing approximately **930 net acres** containing approximately 1,048 gross acres, **LESS AND EXCEPT** any privately owned land that may be located within the above described Tract, if any, comprising approximately 118 acres, leaving a total of 930 net acres of State owned land and water bottoms within the above described Tract, all as more particularly outlined on a plat on file in the Office of Mineral Resources, Department of Natural Resources. All bearings, distances and coordinates are based on Louisiana Coordinate System of 1927, (South Zone).

NOTE: The above description of the Tract nominated for lease has been provided and corrected, where required, exclusively by the nomination party. Any mineral lease selected from this Tract and awarded by the Louisiana State Mineral Board shall be without warranty of any kind, either express, implied, or statutory, including, but not limited to, the implied warranties of merchantability and fitness for a particular purpose. Should the mineral lease awarded by the Louisiana State Mineral Board be subsequently modified, cancelled or abrogated due to the existence of conflicting leases, operating agreements, private claims or other future obligations or conditions which may affect all or any portion of the leased Tract, it shall not relieve the Lessee of the obligation to pay any bonus due thereon to the Louisiana State Mineral Board, nor shall

the Louisiana State Mineral Board be obligated to refund any consideration paid by the Lessor prior to such modification, cancellation, or abrogation, including, but not limited to, bonuses, rentals and royalties.

NOTE: This tract is located in the Pass A Loutre WMA under the jurisdiction of the Louisiana Department of Wildlife and Fisheries which has promulgated rules and regulations for the protection of game and wildlife on the aforesaid Tract and, therefore, shall be subject to said rules and regulations, a copy of which shall be attached to the mineral lease. In addition to the specific rules and regulations applicable, the following shall apply regarding operations under this mineral lease:

1. No activities will be allowed without written authorization from the Louisiana Department of Wildlife and Fisheries.

2. Proposed projects will be evaluated on a case by case basis. Modifications to proposed

project features including but not limited to access routes, spoil placement, well sites, flowlines and appurtenant structures may be required by the Department of Wildlife and Fisheries.

3. Compensatory mitigation will be required to offset unavoidable wetland impacts. Mitigation will be required to offset avoidable wetland impacts.

4. Removal of all structures, facilities and equipment will be required within 120 days of abandonment unless otherwise agreed to by the Louisiana Department of Wildlife and Fisheries.

5. No activities will be allowed during the hunting season unless approved by the Department.

6. Compliance with the said WMA regulations will be required unless otherwise specified by the Department.

7. Prior to submitting applications for wetland permits to Federal and State permitting agencies the lease holder shall coordinate project details with the Louisiana Department of Wildlife and Fisheries, Fur and Refuge Division. Contact person for the Department will be Mike Windham at (504) 568-5886.

NOTE: The Department will require a minimum bonus of \$350 per acre and a minimum royalty of 25%.

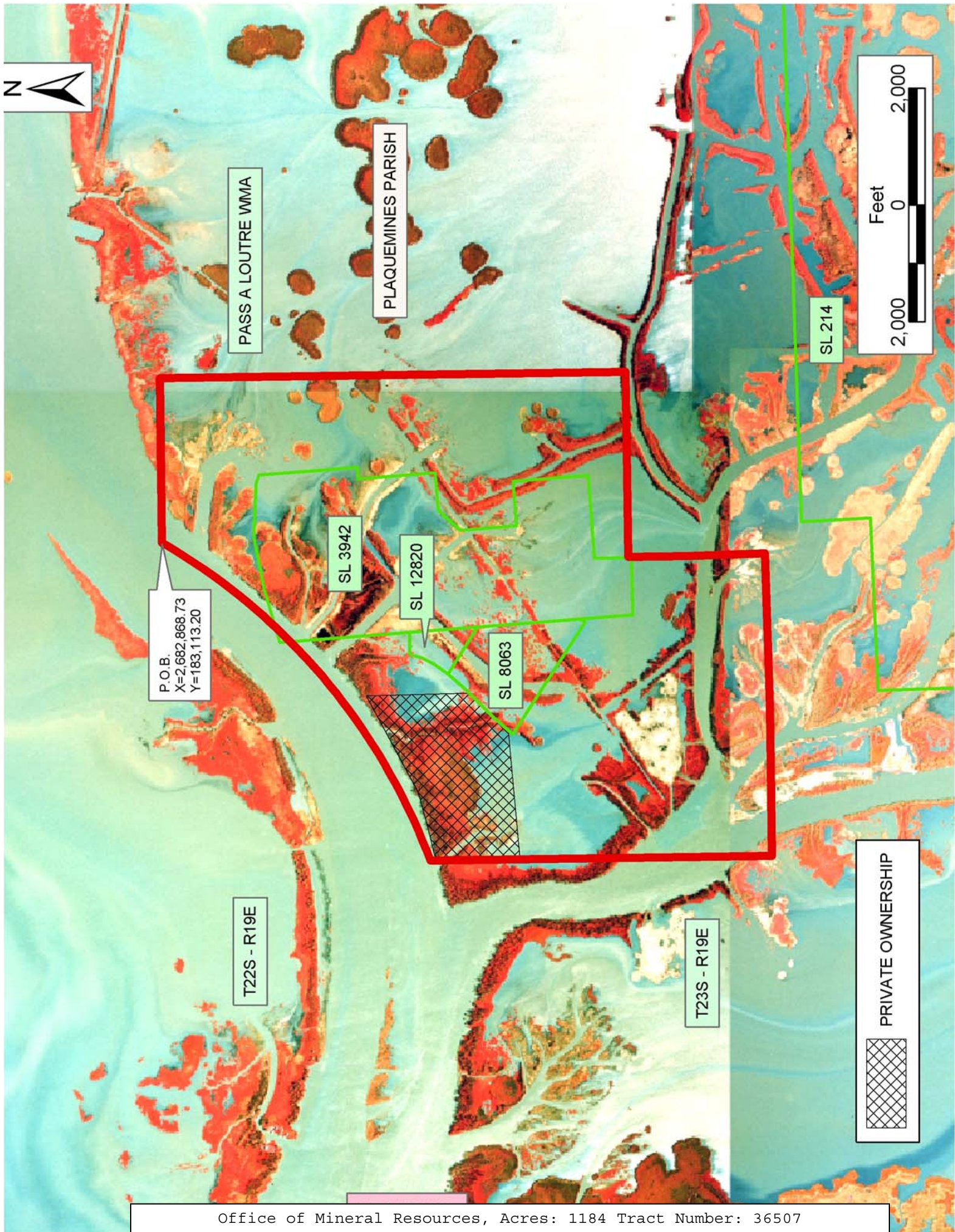
NOTE: The State of Louisiana does hereby reserve, and this lease shall be subject to, the imprescriptible right of surface use in the nature of a servitude in favor of the Department of Natural Resources, including its Offices and Commissions, for the sole purpose of implementing, constructing, servicing and maintaining approved coastal zone management and/or restoration projects. Utilization of any and all rights derived under this lease by the mineral lessee, its agents, successors or assigns, shall not interfere with nor hinder the reasonable surface use by the Department of Natural Resources, its Offices or Commissions, as herein above reserved.

NOTE: The Department of Wildlife and Fisheries has designated certain areas in the coastal waters of the State of Louisiana as Oyster Seed Bed

Areas. The exact location of those Seed Bed Areas must be obtained from the Department of Wildlife and Fisheries and any work done under a mineral lease from the State of Louisiana may necessarily be conducted in conformity with the rules and regulations promulgated by the said Department of Wildlife and Fisheries for Oyster Seed Bed Areas.

Applicant: Coastal Oil & Gas Properties, Inc.

Bidder	Cash Payment	Price/Acre	Rental	Oil	Gas	Other



P.O.B.
X=2,682,868.73
Y=183,113.20

PASS A LOUTRE WMA

PLAQUEMINES PARISH

SL 3942

SL 12820

SL 8063

SL 214

T22S - R19E

T23S - R19E

PRIVATE OWNERSHIP

Feet
2,000 0 2,000



TRACT 36508 - Plaquemines Parish, Louisiana

A portion of all State owned lands and water bottoms located with the boundaries of the Pass-A-Loutre Wildlife Management Area as defined by the Department of Wildlife and Fisheries incorporating a title opinion from the Office of the Governor dated August 3, 1998, not presently under mineral lease by the State of Louisiana on July 14, 2004, all as set forth following: Beginning at a point having Coordinates of X = 2,685,682.16 and Y = 183,122.74; Thence East 7,000.32 feet to a point having Coordinates of X = 2,692,682.48 and Y = 183,122.74; Thence South 8,812.14 feet to a point on the north boundary of State Lease No. 214 having Coordinates of X = 2,692,682.48 and Y = 174,310.60; Thence with the north boundary of State Lease No. 214 South 88degrees 54 minutes 50 seconds West 10,165.29 feet to a corner having Coordinates of X = 2,682,519.02 and Y = 174,117.91; Thence North 1,019.93 feet to a point having Coordinates of X = 2,682,519.02 and Y = 175,137.84; Thence East 3,163.14 feet to a point having Coordinates of X = 2,685,682.16 and Y = 175,137.84; Thence North 7,984.90 feet to point of beginning, containing approximately **1,134 net acres**, containing approximately 1,500 gross acres, **LESS AND EXCEPT** any privately owned land that may be located within the above described Tract, if any, comprising approximately 366 acres, leaving a total of 1,134 net acres of State owned land and water bottoms within the above described Tract, all as more particularly outlined on a plat on file in the Office of Mineral Resources, Department of Natural Resources. All bearings, distances and coordinates are based on Louisiana Coordinate System of 1927, (South Zone).

NOTE: The above description of the Tract nominated for lease has been provided and corrected, where required, exclusively by the nomination party. Any mineral lease selected from this Tract and awarded by the Louisiana State Mineral Board shall be without warranty of any kind, either express, implied, or statutory, including, but not limited to, the implied warranties of merchantability and fitness for a particular purpose. Should the mineral lease awarded by the Louisiana State Mineral Board be subsequently modified, cancelled or abrogated due to the existence of conflicting leases, operating agreements, private claims or other future obligations or conditions which may affect all or any portion of the leased Tract, it shall not relieve the Lessee of the obligation to pay any bonus due thereon to the Louisiana State Mineral Board, nor shall the Louisiana State Mineral Board be obligated to refund any consideration paid by the Lessor prior to such modification, cancellation, or abrogation, including, but not limited to, bonuses, rentals and royalties.

NOTE: This tract is located in the Pass-A-Loutre WMA under the jurisdiction of the Louisiana Department of Wildlife and Fisheries which has promulgated rules and regulations for the protection of game and wildlife on the aforesaid Tract and, therefore, shall be subject to said rules and regulations, a copy of which shall be attached to the mineral lease. In addition to the specific rules and regulations applicable, the following shall apply regarding operations under this mineral lease:

1. No activities will be allowed without written authorization from the Louisiana Department of Wildlife and Fisheries.
2. Proposed projects will be evaluated on a case by case basis. Modifications to proposed project features including but not limited to access routes, spoil placement, well sites, flowlines and appurtenant structures may be required by the Department of Wildlife and Fisheries.
3. Compensatory mitigation will be required to offset unavoidable wetland impacts. Mitigation will be required to offset avoidable wetland impacts.
4. Removal of all structures, facilities and equipment will be required within 120 days of abandonment unless otherwise agreed to by the Louisiana Department of Wildlife and Fisheries.
5. No activities will be allowed during the hunting season unless approved by the Department.
6. Compliance with the said WMA regulations will be required unless otherwise specified by the Department.
7. Prior to submitting applications for wetland permits to Federal and State permitting agencies the lease holder shall coordinate project details with the Louisiana Department of Wildlife and Fisheries, Fur and Refuge Division. Contact person for the Department will be Mike Windham at (504) 568-5886.

NOTE: The Department will require a minimum bonus of \$350 per acre and a minimum royalty of 25%.

NOTE: The State of Louisiana does hereby reserve, and this lease shall be subject to, the imprescriptible right of surface use in the nature of a servitude in favor of the Department of Natural Resources, including its Offices and Commissions, for the sole purpose of implementing, constructing, servicing and maintaining approved coastal zone management and/or restoration projects. Utilization of any and all rights derived under this lease by the mineral lessee, its agents, successors or assigns, shall not interfere with nor hinder the reasonable surface use by the Department of Natural Resources, its Offices or Commissions, as herein above reserved.

NOTE: The Department of Wildlife and Fisheries has designated certain areas in the coastal waters of the State of Louisiana as Oyster Seed Bed Areas. The exact location of those Seed Bed Areas must be obtained from the Department of Wildlife and Fisheries and any work done under a mineral lease from the State of Louisiana may necessarily be conducted in conformity with the rules and regulations promulgated by the said Department of Wildlife and Fisheries for Oyster Seed Bed Areas.

Applicant: Coastal Oil & Gas Properties, Inc.

Bidder	Cash Payment	Price/Acre	Rental	Oil	Gas	Other

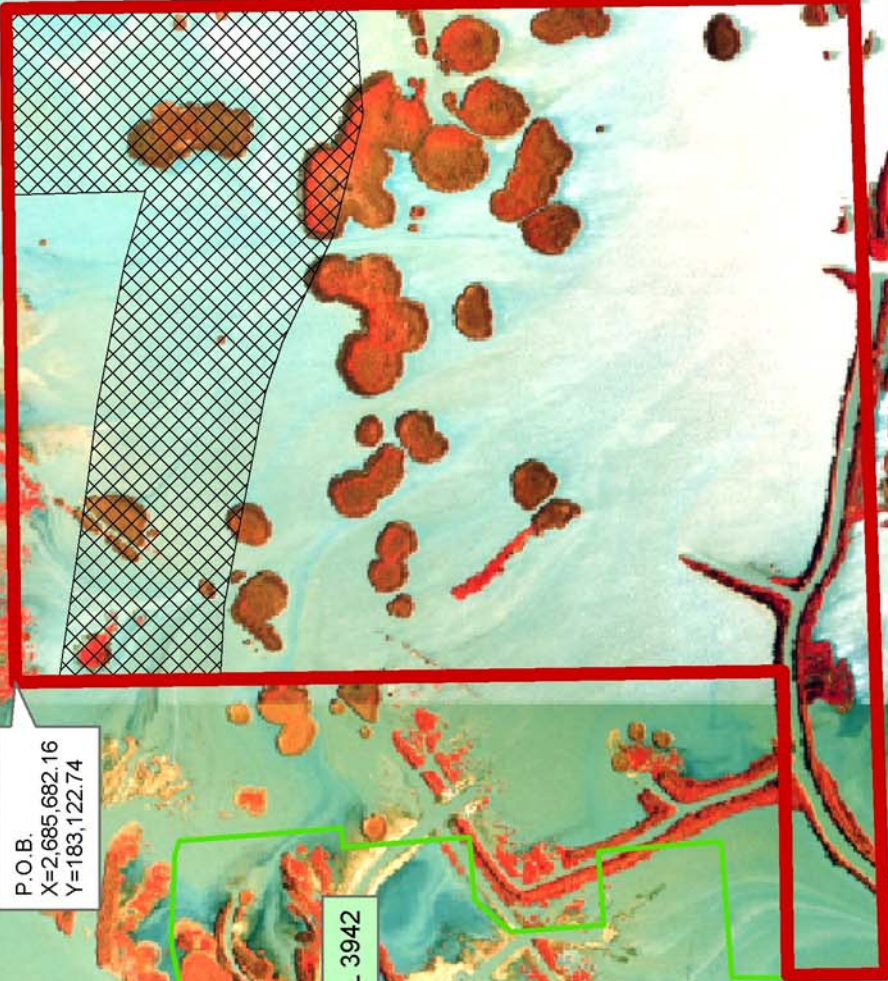


PLAQUEMINES PARISH

T22S - R32E

PASS A LOUTRE WMA

T22S - R32E



P.O.B.
X=2,685,682.16
Y=183,122.74

T22S - R32E

SL 214

T22S - R32E

PRIVATE OWNERSHIP

SL 3942

SL 12820

SL 8063

TR 04070060

TRACT 36509 - Plaquemines Parish, Louisiana

A portion of all State owned lands and water bottoms located with the boundaries of the Pass-A-Loutre Wildlife Management Area as defined by the Department of Wildlife and Fisheries incorporating a title opinion from the Office of the Governor dated August 3, 1998, not presently under mineral lease by the State of Louisiana on July 14, 2004, all as set forth following: Beginning at a point on the Northern boundary of Pass A Loutre Refuge having Coordinates of X = 2,673,295.33 Y = 178,098.24; Thence Easterly with the said Refuge boundary the following courses: along an arc to the left with a radius of 20,962.73 feet and a long chord bearing North 89 degrees 20 minutes 27 seconds East 2,230.87 feet to a point having Coordinates of X = 2,675,526.05 and Y = 178,123.90; along an arc to the left with a radius of 10,510.00 feet and a long chord bearing North 75 degrees 36 minutes 10 seconds East 1,899.00 feet to a point having Coordinates of X = 2,677,365.40 and Y = 178,596.07; Thence South 5,847.97 feet to a point having Coordinates of X = 2,677,365.40 and Y = 172,748.10; Thence East 2,539.09 feet to a point being on a Western corner of State Lease No. 214 having Coordinates of X = 2,679,904.49 and Y = 172,748.10; Thence with a Western boundary of State Lease No. 214 the following courses: South 01 degrees 05 minutes 10 seconds East 2,640.00 feet to a point having Coordinates of X = 2,679,954.53 and Y = 170,108.57; South 88 degrees 54 minutes 50 seconds West 2,640.00 feet to a point having Coordinates of X = 2,677,315.01 and Y = 170,058.53; South 01 degrees 05 minutes 10 seconds East 1,320.00 feet to a point having Coordinates of X = 2,677,340.03 and Y = 168,738.77; Thence West 4,044.70 feet to a point having Coordinates of X = 2,673,295.33 and Y = 168,738.77; Thence North 9,359.47 feet to point of beginning, containing approximately **1,039.64 net acres**, containing approximately 1,039.64 gross acres, **LESS AND EXCEPT** any privately owned land that may be located within the above described Tract, if any, comprising approximately 0 acres, leaving a total of 1,039.64 net acres of State owned land and water bottoms within the above described Tract, all as more particularly outlined on a plat on file in the Office of Mineral Resources, Department of Natural Resources. All bearings, distances and coordinates are based on Louisiana Coordinate System of 1927, (South Zone).

NOTE: The above description of the Tract nominated for lease has been provided and corrected, where required, exclusively by the nomination party. Any mineral lease selected from this Tract and awarded by the Louisiana State Mineral Board shall be without warranty of any kind, either express, implied, or statutory, including, but not limited to, the implied warranties of merchantability and fitness for a particular purpose. Should the mineral lease awarded by the Louisiana State Mineral Board be subsequently modified, cancelled or abrogated due to the existence of conflicting leases, operating agreements, private claims or other future obligations or conditions which may affect all or any portion of the leased Tract, it shall not relieve the Lessee of the obligation to pay any bonus due thereon to the Louisiana State Mineral Board, nor shall the Louisiana State Mineral Board be obligated to refund any consideration

paid by the Lessor prior to such modification, cancellation, or abrogation, including, but not limited to, bonuses, rentals and royalties.

NOTE: This tract is located in the Pass A Loutre WMA under the jurisdiction of the Louisiana Department of Wildlife and Fisheries which has promulgated rules and regulations for the protection of game and wildlife on the aforesaid Tract and, therefore, shall be subject to said rules and regulations, a copy of which shall be attached to the mineral lease. In addition to the specific rules and regulations applicable, the following shall apply regarding operations under this mineral lease:

1. No activities will be allowed without written authorization from the Louisiana Department of Wildlife and Fisheries.

2. Proposed projects will be evaluated on a case by case basis.

Modifications to proposed

project features including but not limited to access routes, spoil placement, well sites, flowlines and appurtenant structures may be required by the Department of Wildlife and Fisheries.

3. Compensatory mitigation will be required to offset unavoidable wetland impacts. Mitigation will be required to offset avoidable wetland impacts.

4. Removal of all structures, facilities and equipment will be required within 120 days of abandonment unless otherwise agreed to by the Louisiana Department of Wildlife and Fisheries.

5. No activities will be allowed during the hunting season unless approved by the Department.

6. Compliance with the said WMA regulations will be required unless otherwise specified by the Department.

7. Prior to submitting applications for wetland permits to Federal and State permitting agencies the lease holder shall coordinate project details with the Louisiana Department of Wildlife and Fisheries, Fur and Refuge Division. Contact person for the Department will be Mike Windham at (504) 568-5886.

NOTE: The State of Louisiana does hereby reserve, and this lease shall be subject to, the imprescriptible right of surface use in the nature of a servitude in favor of the Department of Natural Resources, including its Offices and Commissions, for the sole purpose of implementing, constructing, servicing and maintaining approved coastal zone management and/or restoration projects. Utilization of any and all rights derived under this lease by the mineral lessee, its agents, successors or assigns, shall not interfere with nor hinder the reasonable surface use by the Department of Natural Resources, its Offices or Commissions, as herein above reserved.

NOTE: The Department of Wildlife and Fisheries has designated certain areas in the coastal waters of the State of Louisiana as Oyster Seed Bed Areas. The exact location of those Seed Bed Areas must be obtained from the Department of Wildlife and Fisheries and any work done under a mineral lease from the State of Louisiana may necessarily be conducted in

conformity with the rules and regulations promulgated by the said Department of Wildlife and Fisheries for Oyster Seed Bed Areas.

Applicant: Coastal Oil & Gas Properties, Inc.

Bidder	Cash Payment	Price/Acre	Rental	Oil	Gas	Other



P.O.B.
X=2,673,295.33
Y=178,098.24

PASS A LOUTRE WMA

SL 214

T22S - R19E

T23S - R19E

PLAQUEMINES PARISH

TRACT 36510 - Plaquemines Parish, Louisiana

A portion of all State owned lands and water bottoms located with the boundaries of the Pass-A-Loutre Wildlife Management Area as defined by the Department of Wildlife and Fisheries incorporating a title opinion from the Office of the Governor dated August 3, 1998, not presently under mineral lease by the State of Louisiana on July 14, 2004, all as set forth following: Beginning at a point on the East line of Block 21, South Pass Area, having Coordinates of X = 2,704,476.00 and Y = 141,174.00; thence North 12,331.87 feet along the East Line of said Block 21, to a point on the East Line of Block 14, having Coordinates of X = 2,704,476.00 and Y = 153,505.87; thence West approximately 518 feet to a point on the boundary line of State Lease No. 214, as amended, having a Coordinate of Y = 153,505.87; thence along the boundary of said State Lease No. 214, to a point having a Coordinate of X = 2,690,167.84; thence South approximately 2176 feet to a point having Coordinates of X = 2,690,167.84 and Y = 141,174.00; thence East 7,375.00 feet, to the point of beginning, **LESS AND EXCEPT** any portion of said State Lease No. 214 that may lie within the above described tract, containing approximately **1,864.76 net acres**, containing approximately 1,864.76 gross acres, **LESS AND EXCEPT** any privately owned land that may be located within the above described Tract, if any, comprising approximately 0 acres, leaving a total of 1,864.76 net acres of State owned land and water bottoms within the above described Tract, all as more particularly outlined on a plat on file in the Office of Mineral Resources, Department of Natural Resources. All bearings, distances and coordinates are based on Louisiana Coordinate System of 1927, (South Zone).

NOTE: The above description of the Tract nominated for lease has been provided and corrected, where required, exclusively by the nomination party. Any mineral lease selected from this Tract and awarded by the Louisiana State Mineral Board shall be without warranty of any kind, either express, implied, or statutory, including, but not limited to, the implied warranties of merchantability and fitness for a particular purpose. Should the mineral lease awarded by the Louisiana State Mineral Board be subsequently modified, cancelled or abrogated due to the existence of conflicting leases, operating agreements, private claims or other future obligations or conditions which may affect all or any portion of the leased Tract, it shall not relieve the Lessee of the obligation to pay any bonus due thereon to the Louisiana State Mineral Board, nor shall the Louisiana State Mineral Board be obligated to refund any consideration paid by the Lessor prior to such modification, cancellation, or abrogation, including, but not limited to, bonuses, rentals and royalties.

NOTE: This tract is located in the Pass A Loutre WMA under the jurisdiction of the Louisiana Department of Wildlife and Fisheries which has promulgated rules and regulations for the protection of game and wildlife on the aforesaid Tract and, therefore, shall be subject to said rules and regulations, a copy of which shall be attached to the mineral

lease. In addition to the specific rules and regulations applicable, the following shall apply regarding operations under this mineral lease:

1. No activities will be allowed without written authorization from the Louisiana Department of Wildlife and Fisheries.

2. Proposed projects will be evaluated on a case by case basis. Modifications to proposed project features including but not limited to access routes, spoil placement, well sites, flowlines and appurtenant structures may be required by the Department of Wildlife and Fisheries.

3. Compensatory mitigation will be required to offset unavoidable wetland impacts. Mitigation will be required to offset avoidable wetland impacts.

4. Removal of all structures, facilities and equipment will be required within 120 days of abandonment unless otherwise agreed to by the Louisiana Department of Wildlife and Fisheries.

5. No activities will be allowed during the hunting season unless approved by the Department.

6. Compliance with the said WMA regulations will be required unless otherwise specified by the Department.

7. Prior to submitting applications for wetland permits to Federal and State permitting agencies the lease holder shall coordinate project details with the Louisiana Department of Wildlife and Fisheries, Fur and Refuge Division. Contact person for the Department will be Mike Windham at (504) 568-5886.

NOTE: The Department will require a minimum bonus of \$350 per acre and a minimum royalty of 25%.

NOTE: The State of Louisiana does hereby reserve, and this lease shall be subject to, the imprescriptible right of surface use in the nature of a servitude in favor of the Department of Natural Resources, including its Offices and Commissions, for the sole purpose of implementing, constructing, servicing and maintaining approved coastal zone management and/or restoration projects. Utilization of any and all rights derived under this lease by the mineral lessee, its agents, successors or assigns, shall not interfere with nor hinder the reasonable surface use by the Department of Natural Resources, its Offices or Commissions, as herein above reserved.

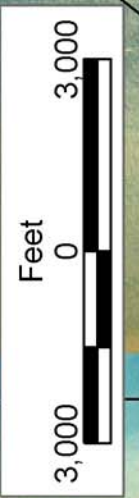
NOTE: The Department of Wildlife and Fisheries has designated certain areas in the coastal waters of the State of Louisiana as Oyster Seed Bed Areas. The exact location of those Seed Bed Areas must be obtained from the Department of Wildlife and Fisheries and any work done under a mineral lease from the State of Louisiana may necessarily be conducted in conformity with the rules and regulations promulgated by the said Department of Wildlife and Fisheries for Oyster Seed Bed Areas.

Applicant: Lee Sonnier, Iii

Bidder	Cash Payment	Price/Acre	Rental	Oil	Gas	Other



P.O.B.
X=2,704,476.00
Y=1,411,174.00



PLAQUEMINES PARISH

SL 214

BLOCK SP0014

BLOCK SP0021

SOUTH PASS AREA

TRACT 36511 - Plaquemines Parish, Louisiana

A portion of all State owned lands and water bottoms located with the boundaries of the Pass-A-Loutre Wildlife Management Area as defined by the Department of Wildlife and Fisheries incorporating a title opinion from the Office of the Governor dated August 3, 1998, not presently under mineral lease by the State of Louisiana on July 14, 2004, all as set forth following: Beginning at a point on the East line of Block 20, South Pass Area, having Coordinates of X = 2,719,234.00 and Y = 141,174.00; thence West 14,758.00 feet, to a point on the West line of said Block 20, having Coordinates of X = 2,704,476.00 and Y = 141,174.00, thence North 6,256.84 feet along said West line, to a point on the West line of Block 15, having Coordinates of X = 2,704,476.00 and Y = 147,430.84; thence East 14,758.00 feet to a point on said East line of said Block 15, having Coordinates of X = 2,719,234.00 and Y = 147,430.84; thence South 6,256.84 feet along said East line, to the point of beginning, containing approximately **2,119.80 net acres**, containing approximately 1,119.80 gross acres, **LESS AND EXCEPT** any privately owned land that may be located within the above described Tract, if any, comprising approximately 0 acres, leaving a total of 1,119.80 net acres of State owned land and water bottoms within the above described Tract, all as more particularly outlined on a plat on file in the Office of Mineral Resources, Department of Natural Resources. All bearings, distances and coordinates are based on Louisiana Coordinate System of 1927, (South Zone).

NOTE: The above description of the Tract nominated for lease has been provided and corrected, where required, exclusively by the nomination party. Any mineral lease selected from this Tract and awarded by the Louisiana State Mineral Board shall be without warranty of any kind, either express, implied, or statutory, including, but not limited to, the implied warranties of merchantability and fitness for a particular purpose. Should the mineral lease awarded by the Louisiana State Mineral Board be subsequently modified, cancelled or abrogated due to the existence of conflicting leases, operating agreements, private claims or other future obligations or conditions which may affect all or any portion of the leased Tract, it shall not relieve the Lessee of the obligation to pay any bonus due thereon to the Louisiana State Mineral Board, nor shall the Louisiana State Mineral Board be obligated to refund any consideration paid by the Lessor prior to such modification, cancellation, or abrogation, including, but not limited to, bonuses, rentals and royalties.

NOTE: This tract is located in the Pass A Loutre WMA under the jurisdiction of the Louisiana Department of Wildlife and Fisheries which has promulgated rules and regulations for the protection of game and wildlife on the aforesaid Tract and, therefore, shall be subject to said rules and regulations, a copy of which shall be attached to the mineral lease. In addition to the specific rules and regulations applicable, the following shall apply regarding operations under this mineral lease:

1. No activities will be allowed without written authorization from the Louisiana Department of Wildlife and Fisheries.

2. Proposed projects will be evaluated on a case by case basis. Modifications to proposed project features including but not limited to access routes, spoil placement, well sites, flowlines and appurtenant structures may be required by the Department of Wildlife and Fisheries.
3. Compensatory mitigation will be required to offset unavoidable wetland impacts. Mitigation will be required to offset avoidable wetland impacts.
4. Removal of all structures, facilities and equipment will be required within 120 days of abandonment unless otherwise agreed to by the Louisiana Department of Wildlife and Fisheries.
5. No activities will be allowed during the hunting season unless approved by the Department.
6. Compliance with the said WMA regulations will be required unless otherwise specified by the Department.
7. Prior to submitting applications for wetland permits to Federal and State permitting agencies the lease holder shall coordinate project details with the Louisiana Department of Wildlife and Fisheries, Fur and Refuge Division. Contact person for the Department will be Mike Windham at (504) 568-5886.

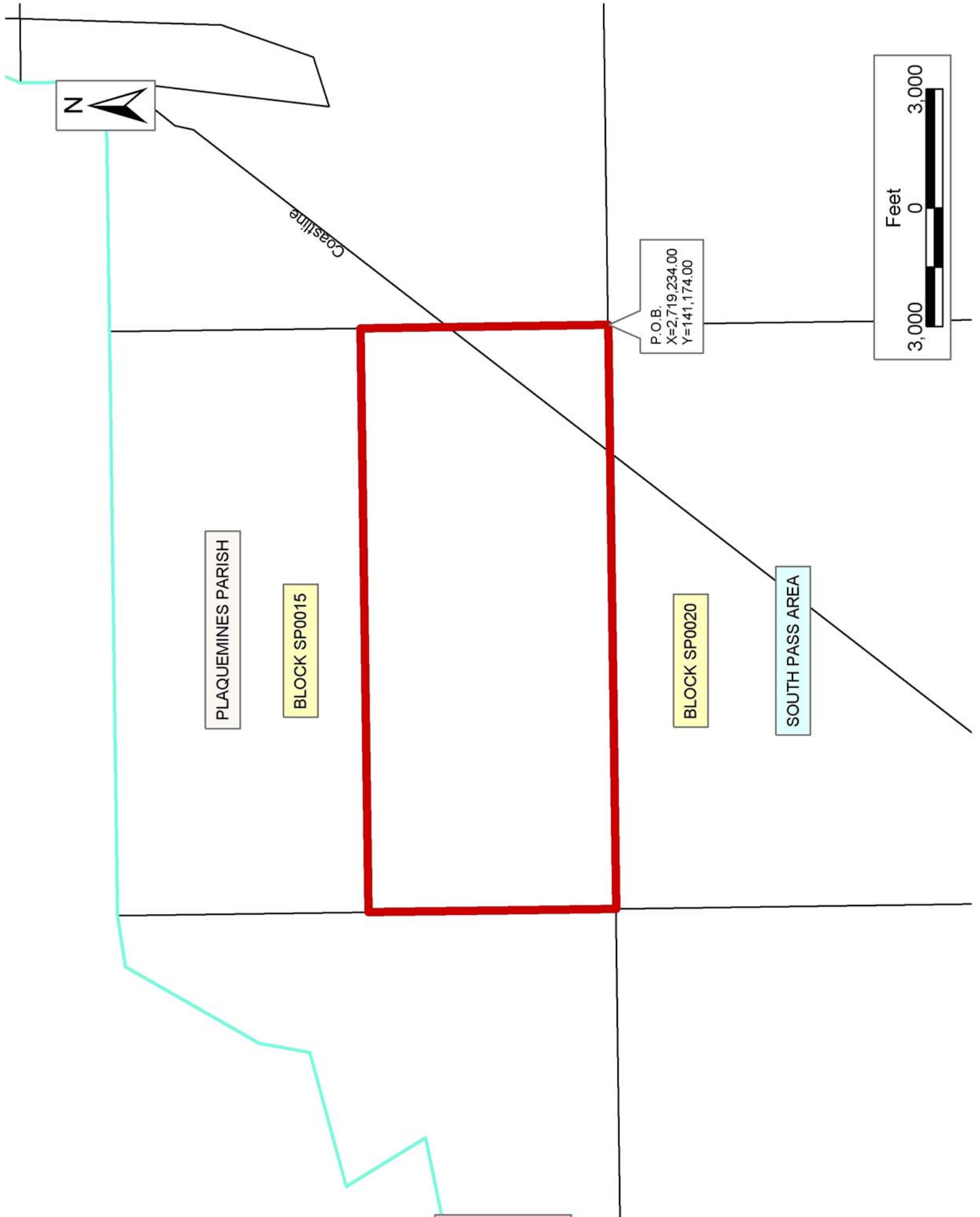
NOTE: The Department will require a minimum bonus of \$350 per acre and a minimum royalty of 25%.

NOTE: The State of Louisiana does hereby reserve, and this lease shall be subject to, the imprescriptible right of surface use in the nature of a servitude in favor of the Department of Natural Resources, including its Offices and Commissions, for the sole purpose of implementing, constructing, servicing and maintaining approved coastal zone management and/or restoration projects. Utilization of any and all rights derived under this lease by the mineral lessee, its agents, successors or assigns, shall not interfere with nor hinder the reasonable surface use by the Department of Natural Resources, its Offices or Commissions, as herein above reserved.

NOTE: The Department of Wildlife and Fisheries has designated certain areas in the coastal waters of the State of Louisiana as Oyster Seed Bed Areas. The exact location of those Seed Bed Areas must be obtained from the Department of Wildlife and Fisheries and any work done under a mineral lease from the State of Louisiana may necessarily be conducted in conformity with the rules and regulations promulgated by the said Department of Wildlife and Fisheries for Oyster Seed Bed Areas.

Applicant: Lee Sonnier, Iii

Bidder	Cash Payment	Price/Acre	Rental	Oil	Gas	Other



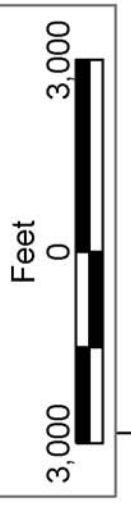
PLAQUEMINES PARISH

BLOCK SP0015

BLOCK SP0020

SOUTH PASS AREA

P.O.B.
X=2,719,234.00
Y=141,174.00



TRACT 36512 - Plaquemines Parish, Louisiana

A portion of all State owned lands and water bottoms located with the boundaries of the Pass-A-Loutre Wildlife Management Area as defined by the Department of Wildlife and Fisheries incorporating a title opinion from the Office of the Governor dated August 3, 1998, not presently under mineral lease by the State of Louisiana on July 14, 2004, all as set forth following: Beginning at a point on the West line of Block 19, South Pass Area, having Coordinates of X = 2,719,234.00 and Y = 141,174.00; thence North 6,256.84 feet along the West line of Block 16, to a point having Coordinates of X = 2,719,234.00 and Y = 147,430.84; thence East 7,373.14 feet to a point on the boundary line of the Pass A Loutre Wildlife Management Area having Coordinates of X = 2,726,607.14 and Y = 147,430.84; thence Southwesterly 12,293.84 feet along said boundary of the Pass A Loutre Wildlife Management Area to a point having Coordinates of X = 2,720,975.28 and Y = 136,502.87; thence Southwesterly 3,076.28 feet along said boundary of the Pass A Loutre Wildlife Management Area to a point on the West line of Block 19, South Pass Area, having Coordinates of X = 2,719,234.00 and Y = 133,966.84; thence North 7,207.16 feet along the West line of said Blocks 19 and 16, to the point of beginning, containing approximately **1,193.96 net acres**, containing approximately 1,193.96 gross acres, **LESS AND EXCEPT** any privately owned land that may be located within the above described Tract, if any, comprising approximately 0 acres, leaving a total of 1,193.96 net acres of State owned land and water bottoms within the above described Tract, all as more particularly outlined on a plat on file in the Office of Mineral Resources, Department of Natural Resources. All bearings, distances and coordinates are based on Louisiana Coordinate System of 1927, (South Zone).

NOTE: The above description of the Tract nominated for lease has been provided and corrected, where required, exclusively by the nomination party. Any mineral lease selected from this Tract and awarded by the Louisiana State Mineral Board shall be without warranty of any kind, either express, implied, or statutory, including, but not limited to, the implied warranties of merchantability and fitness for a particular purpose. Should the mineral lease awarded by the Louisiana State Mineral Board be subsequently modified, cancelled or abrogated due to the existence of conflicting leases, operating agreements, private claims or other future obligations or conditions which may affect all or any portion of the leased Tract, it shall not relieve the Lessee of the obligation to pay any bonus due thereon to the Louisiana State Mineral Board, nor shall the Louisiana State Mineral Board be obligated to refund any consideration paid by the Lessor prior to such modification, cancellation, or abrogation, including, but not limited to, bonuses, rentals and royalties.

NOTE: This tract is located in the Pass A Loutre WMA under the jurisdiction of the Louisiana Department of Wildlife and Fisheries which has promulgated rules and regulations for the protection of game and wildlife on the aforesaid Tract and, therefore, shall be subject to said rules and regulations, a copy of which shall be attached to the mineral

lease. In addition to the specific rules and regulations applicable, the following shall apply regarding operations under this mineral lease:

1. No activities will be allowed without written authorization from the Louisiana Department of Wildlife and Fisheries.
2. Proposed projects will be evaluated on a case by case basis. Modifications to proposed project features including but not limited to access routes, spoil placement, well sites, flowlines and appurtenant structures may be required by the Department of Wildlife and Fisheries.
3. Compensatory mitigation will be required to offset unavoidable wetland impacts. Mitigation will be required to offset avoidable wetland impacts.
4. Removal of all structures, facilities and equipment will be required within 120 days of abandonment unless otherwise agreed to by the Louisiana Department of Wildlife and Fisheries.
5. No activities will be allowed during the hunting season unless approved by the Department.
6. Compliance with the said WMA regulations will be required unless otherwise specified by the Department.
7. Prior to submitting applications for wetland permits to Federal and State permitting agencies the lease holder shall coordinate project details with the Louisiana Department of Wildlife and Fisheries, Fur and Refuge Division. Contact person for the Department will be Mike Windham at (504) 568-5886.

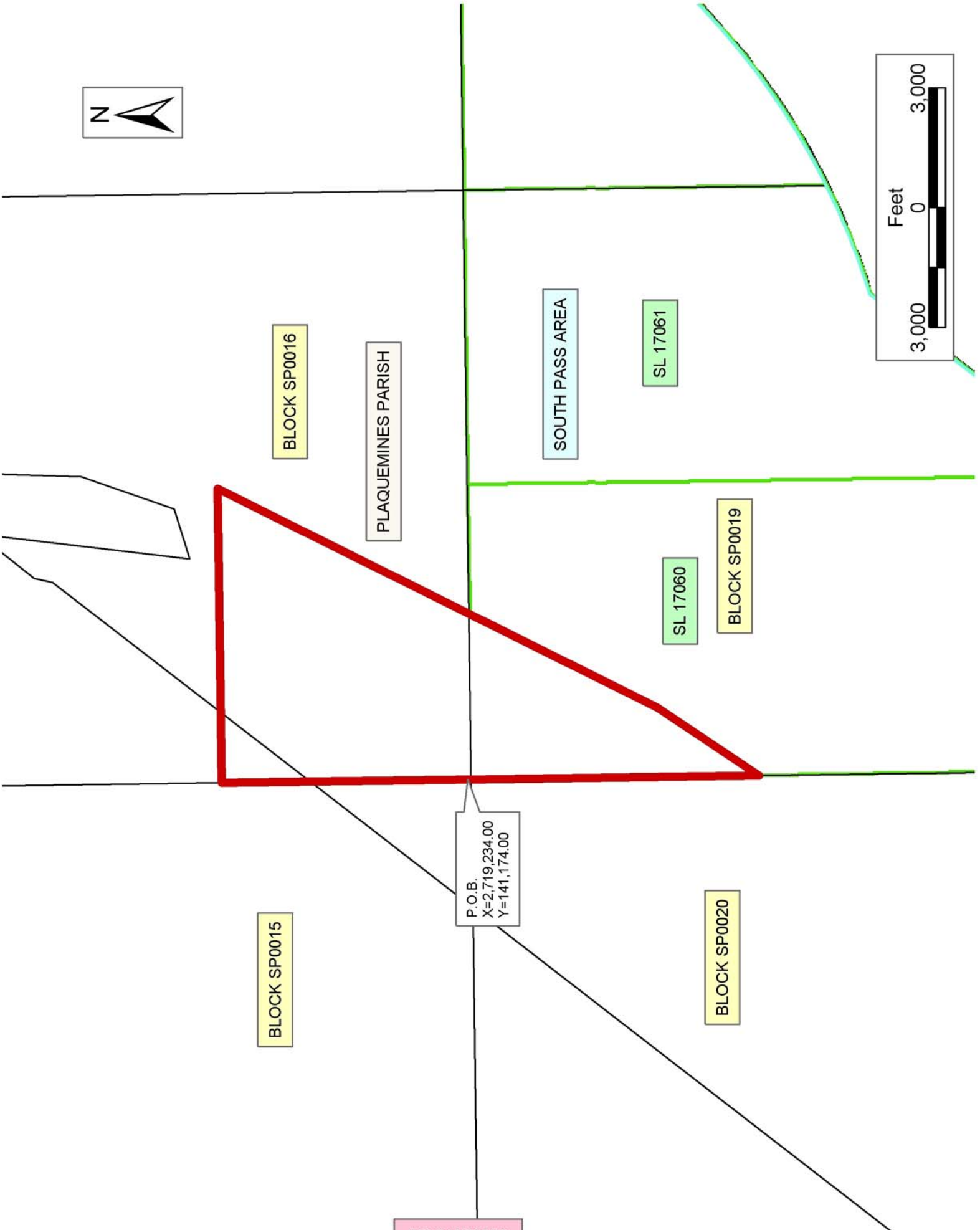
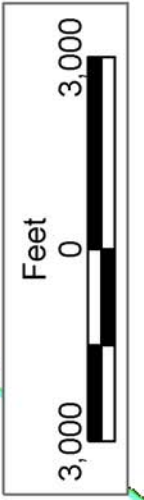
NOTE: The Department will require a minimum bonus of \$350 per acre and a minimum royalty of 25%.

NOTE: The State of Louisiana does hereby reserve, and this lease shall be subject to, the imprescriptible right of surface use in the nature of a servitude in favor of the Department of Natural Resources, including its Offices and Commissions, for the sole purpose of implementing, constructing, servicing and maintaining approved coastal zone management and/or restoration projects. Utilization of any and all rights derived under this lease by the mineral lessee, its agents, successors or assigns, shall not interfere with nor hinder the reasonable surface use by the Department of Natural Resources, its Offices or Commissions, as herein above reserved.

NOTE: It appears, according to our records, that a portion of this Tract is located within the restrictive safety fairway area as set out by the Corps of Engineers, U.S. Army and/or the restrictive anchorage area as set out by the U.S. Coast Guard.

Applicant: Lee Sonnier, Iii

Bidder	Cash Payment	Price/Acre	Rental	Oil	Gas	Other



P.O.B.
X=2,719,234.00
Y=141,174.00

BLOCK SP0015

BLOCK SP0016

PLAQUEMINES PARISH

SOUTH PASS AREA

SL 17061

SL 17060

BLOCK SP0019

BLOCK SP0020

TRACT 36513 - Plaquemines Parish, Louisiana

A portion of all State owned lands and water bottoms located with the boundaries of the Pass-A-Loutre Wildlife Management Area as defined by the Department of Wildlife and Fisheries incorporating a title opinion from the Office of the Governor dated August 3, 1998, not presently under mineral lease by the State of Louisiana on July 14, 2004, all as set forth following: Beginning at the Southeast corner of Block 21, South Pass Area, having Coordinates of X = 2,704,476.00 and Y = 126,424.00; thence West 7,375.00 feet along the South line of said Block 21, to a point having Coordinates of X = 2,697,101.00 and Y = 126,424.00; thence North 14,750.00 feet to a point having Coordinates of X = 2,697,101.00 and Y = 141,174.00; thence East 7,375.00 feet to a point on the East line of said Block 21, having Coordinates of X = 2,704,476.00 and Y = 141,174.00, thence South 14,750.00 feet along the East line of said Block 21, to the point of beginning, containing approximately **2,497.27 net acres**, containing approximately 2,497.27 gross acres, **LESS AND EXCEPT** any privately owned land that may be located within the above described Tract, if any, comprising approximately 0 acres, leaving a total of 2,497.27 net acres of State owned land and water bottoms within the above described Tract, all as more particularly outlined on a plat on file in the Office of Mineral Resources, Department of Natural Resources. All bearings, distances and coordinates are based on Louisiana Coordinate System of 1927, (South Zone).

NOTE: The above description of the Tract nominated for lease has been provided and corrected, where required, exclusively by the nomination party. Any mineral lease selected from this Tract and awarded by the Louisiana State Mineral Board shall be without warranty of any kind, either express, implied, or statutory, including, but not limited to, the implied warranties of merchantability and fitness for a particular purpose. Should the mineral lease awarded by the Louisiana State Mineral Board be subsequently modified, cancelled or abrogated due to the existence of conflicting leases, operating agreements, private claims or other future obligations or conditions which may affect all or any portion of the leased Tract, it shall not relieve the Lessee of the obligation to pay any bonus due thereon to the Louisiana State Mineral Board, nor shall the Louisiana State Mineral Board be obligated to refund any consideration paid by the Lessor prior to such modification, cancellation, or abrogation, including, but not limited to, bonuses, rentals and royalties.

NOTE: This tract is located in the Pass A Loutre WMA under the jurisdiction of the Louisiana Department of Wildlife and Fisheries which has promulgated rules and regulations for the protection of game and wildlife on the aforesaid Tract and, therefore, shall be subject to said rules and regulations, a copy of which shall be attached to the mineral lease. In addition to the specific rules and regulations applicable, the following shall apply regarding operations under this mineral lease:

1. No activities will be allowed without written authorization from the Louisiana Department of Wildlife and Fisheries.

2. Proposed projects will be evaluated on a case by case basis. Modifications to proposed project features including but not limited to access routes, spoil placement, well sites, flowlines and appurtenant structures may be required by the Department of Wildlife and Fisheries.
3. Compensatory mitigation will be required to offset unavoidable wetland impacts. Mitigation will be required to offset avoidable wetland impacts.
4. Removal of all structures, facilities and equipment will be required within 120 days of abandonment unless otherwise agreed to by the Louisiana Department of Wildlife and Fisheries.
5. No activities will be allowed during the hunting season unless approved by the Department.
6. Compliance with the said WMA regulations will be required unless otherwise specified by the Department.
7. Prior to submitting applications for wetland permits to Federal and State permitting agencies the lease holder shall coordinate project details with the Louisiana Department of Wildlife and Fisheries, Fur and Refuge Division. Contact person for the Department will be Mike Windham at (504) 568-5886.

NOTE: The Department will require a minimum bonus of \$350 per acre and a minimum royalty of 25%.

NOTE: The State of Louisiana does hereby reserve, and this lease shall be subject to, the imprescriptible right of surface use in the nature of a servitude in favor of the Department of Natural Resources, including its Offices and Commissions, for the sole purpose of implementing, constructing, servicing and maintaining approved coastal zone management and/or restoration projects. Utilization of any and all rights derived under this lease by the mineral lessee, its agents, successors or assigns, shall not interfere with nor hinder the reasonable surface use by the Department of Natural Resources, its Offices or Commissions, as herein above reserved.

NOTE: It appears, according to our records, that a portion of this Tract is located within the restrictive safety fairway area as set out by the Corps of Engineers, U.S. Army and/or the restrictive anchorage area as set out by the U.S. Coast Guard.

NOTE: The Department of Wildlife and Fisheries has designated certain areas in the coastal waters of the State of Louisiana as Oyster Seed Bed Areas. The exact location of those Seed Bed Areas must be obtained from the Department of Wildlife and Fisheries and any work done under a mineral lease from the State of Louisiana may necessarily be conducted in conformity with the rules and regulations promulgated by the said Department of Wildlife and Fisheries for Oyster Seed Bed Areas.

Applicant: Lee Sonnier, Iii

Bidder	Cash Payment	Price/Acre	Rental	Oil	Gas	Other



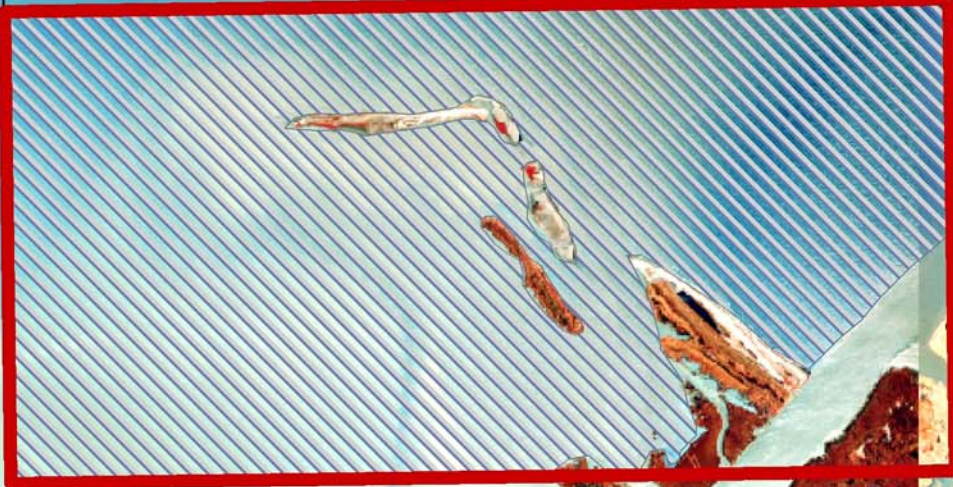
SOUTH PASS AREA

BLOCK SP0020

P.O.B.
X=2,704,476.00
Y=126,424.00



PLAQUEMINES PARISH



BLOCK SP0021

TRACT 36514 - Plaquemines Parish, Louisiana

A portion of all State owned lands and water bottoms located with the boundaries of the Pass-A-Loutre Wildlife Management Area as defined by the Department of Wildlife and Fisheries incorporating a title opinion from the Office of the Governor dated August 3, 1998, not presently under mineral lease by the State of Louisiana on July 14, 2004, all as set forth following: Beginning at the Southwest corner of Block 20, South Pass Area, having Coordinates of X = 2,704,476.00 and Y = 126,424.00; thence North 14,750.00 feet along the West line of said Block 20, to a point having Coordinates of X = 2,704,476.00 and Y = 141,174.00, thence East 7,375.00 feet to a point having Coordinates of X = 2,711,851.00 and Y = 141,174.00; thence South 14,750.00 feet to a point on the South line of said Block 20, having Coordinates of X = 2,711,851.00 and Y = 126,424.00; thence West 7,375.00 feet along the South line of said Block 20, to the point of beginning, containing approximately **2,497.27 net acres**, containing approximately 2,497.27 gross acres, **LESS AND EXCEPT** any privately owned land that may be located within the above described Tract, if any, comprising approximately 0 acres, leaving a total of 2,497.27 net acres of State owned land and water bottoms within the above described Tract, all as more particularly outlined on a plat on file in the Office of Mineral Resources, Department of Natural Resources. All bearings, distances and coordinates are based on Louisiana Coordinate System of 1927, (South Zone).

NOTE: The above description of the Tract nominated for lease has been provided and corrected, where required, exclusively by the nomination party. Any mineral lease selected from this Tract and awarded by the Louisiana State Mineral Board shall be without warranty of any kind, either express, implied, or statutory, including, but not limited to, the implied warranties of merchantability and fitness for a particular purpose. Should the mineral lease awarded by the Louisiana State Mineral Board be subsequently modified, cancelled or abrogated due to the existence of conflicting leases, operating agreements, private claims or other future obligations or conditions which may affect all or any portion of the leased Tract, it shall not relieve the Lessee of the obligation to pay any bonus due thereon to the Louisiana State Mineral Board, nor shall the Louisiana State Mineral Board be obligated to refund any consideration paid by the Lessor prior to such modification, cancellation, or abrogation, including, but not limited to, bonuses, rentals and royalties.

NOTE: This tract is located in the Pass A Loutre WMA under the jurisdiction of the Louisiana Department of Wildlife and Fisheries which has promulgated rules and regulations for the protection of game and wildlife on the aforesaid Tract and, therefore, shall be subject to said rules and regulations, a copy of which shall be attached to the mineral lease. In addition to the specific rules and regulations applicable, the following shall apply regarding operations under this mineral lease:

1. No activities will be allowed without written authorization from the Louisiana Department of Wildlife and Fisheries.

2. Proposed projects will be evaluated on a case by case basis. Modifications to proposed project features including but not limited to access routes, spoil placement, well sites, flowlines and appurtenant structures may be required by the Department of Wildlife and Fisheries.
3. Compensatory mitigation will be required to offset unavoidable wetland impacts. Mitigation will be required to offset avoidable wetland impacts.
4. Removal of all structures, facilities and equipment will be required within 120 days of abandonment unless otherwise agreed to by the Louisiana Department of Wildlife and Fisheries.
5. No activities will be allowed during the hunting season unless approved by the Department.
6. Compliance with the said WMA regulations will be required unless otherwise specified by the Department.
7. Prior to submitting applications for wetland permits to Federal and State permitting agencies the lease holder shall coordinate project details with the Louisiana Department of Wildlife and Fisheries, Fur and Refuge Division. Contact person for the Department will be Mike Windham at (504) 568-5886.

NOTE: The Department will require a minimum bonus of \$350 per acre and a minimum royalty of 25%.

NOTE: The State of Louisiana does hereby reserve, and this lease shall be subject to, the imprescriptible right of surface use in the nature of a servitude in favor of the Department of Natural Resources, including its Offices and Commissions, for the sole purpose of implementing, constructing, servicing and maintaining approved coastal zone management and/or restoration projects. Utilization of any and all rights derived under this lease by the mineral lessee, its agents, successors or assigns, shall not interfere with nor hinder the reasonable surface use by the Department of Natural Resources, its Offices or Commissions, as herein above reserved.

NOTE: It appears, according to our records, that a portion of this Tract is located within the restrictive safety fairway area as set out by the Corps of Engineers, U.S. Army and/or the restrictive anchorage area as set out by the U.S. Coast Guard.

NOTE: The Department of Wildlife and Fisheries has designated certain areas in the coastal waters of the State of Louisiana as Oyster Seed Bed Areas. The exact location of those Seed Bed Areas must be obtained from the Department of Wildlife and Fisheries and any work done under a mineral lease from the State of Louisiana may necessarily be conducted in conformity with the rules and regulations promulgated by the said Department of Wildlife and Fisheries for Oyster Seed Bed Areas.

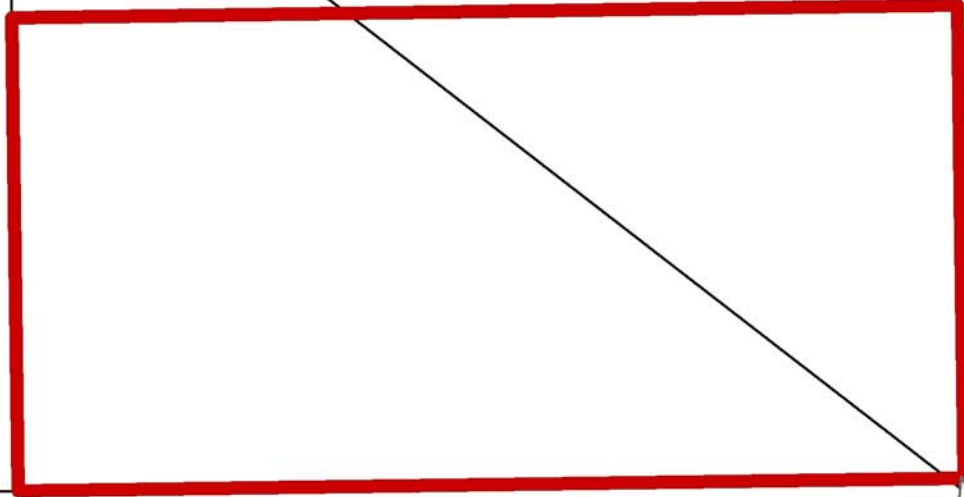
Applicant: Lee Sonnier, Iii

Bidder	Cash Payment	Price/Acre	Rental	Oil	Gas	Other



PLAQUEMINES PARISH

Coastline



SOUTH PASS AREA

BLOCK SP0020

BLOCK SP0021

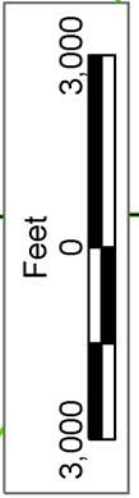
PASS-A-LOUTRE WMA

SL 17060

SL 15763

SL 14860

P.O.B.
X=2,704,476.00
Y=126,424.00



TRACT 36515 - Plaquemines Parish, Louisiana

A portion of all State owned lands and water bottoms located with the boundaries of the Pass-A-Loutre Wildlife Management Area as defined by the Department of Wildlife and Fisheries incorporating a title opinion from the Office of the Governor dated August 3, 1998, not presently under mineral lease by the State of Louisiana on July 14, 2004, all as set forth following: Beginning at a point on the East line of Block 20, South Pass Area, having Coordinates of X = 2,719,234.00 and Y = 141,174.00; thence South 7,207.16 feet along said East Line to a point on the boundary line of the Pass-A-Loutre Wildlife Management Area having Coordinates of X = 2,719,234.00 and Y = 133,966.84; thence Southwesterly 9,744.26 feet along an arc to the right having a radius of 77,200.00 feet and a center at X = 2,656,474.99 and Y = 178,924.01 to a point on the South line of said Block 20, having Coordinates of X = 2,713,075.25 and Y = 126,424.00; thence West 1,224.25 feet along the South line of said Block 20, having Coordinates of X = 2,711,851.00 and Y = 126,424.00; thence North 14,750.0 feet to a point having Coordinates of X = 2,711,851.00 and Y = 141,174.00; thence East 7,383.00 feet to the point of beginning, containing approximately **1,989.67 net acres**, containing approximately 1,989.67 gross acres, **LESS AND EXCEPT** any privately owned land that may be located within the above described Tract, if any, comprising approximately 0 acres, leaving a total of 1,989.67 net acres of State owned land and water bottoms within the above described Tract, all as more particularly outlined on a plat on file in the Office of Mineral Resources, Department of Natural Resources. All bearings, distances and coordinates are based on Louisiana Coordinate System of 1927, (South Zone).

NOTE: The above description of the Tract nominated for lease has been provided and corrected, where required, exclusively by the nomination party. Any mineral lease selected from this Tract and awarded by the Louisiana State Mineral Board shall be without warranty of any kind, either express, implied, or statutory, including, but not limited to, the implied warranties of merchantability and fitness for a particular purpose. Should the mineral lease awarded by the Louisiana State Mineral Board be subsequently modified, cancelled or abrogated due to the existence of conflicting leases, operating agreements, private claims or other future obligations or conditions which may affect all or any portion of the leased Tract, it shall not relieve the Lessee of the obligation to pay any bonus due thereon to the Louisiana State Mineral Board, nor shall the Louisiana State Mineral Board be obligated to refund any consideration paid by the Lessor prior to such modification, cancellation, or abrogation, including, but not limited to, bonuses, rentals and royalties.

NOTE: This tract is located in the Pass A Loutre WMA under the jurisdiction of the Louisiana Department of Wildlife and Fisheries which has promulgated rules and regulations for the protection of game and wildlife on the aforesaid Tract and, therefore, shall be subject to said rules and regulations, a copy of which shall be attached to the mineral

lease. In addition to the specific rules and regulations applicable, the following shall apply regarding operations under this mineral lease:

1. No activities will be allowed without written authorization from the Louisiana Department of Wildlife and Fisheries.
2. Proposed projects will be evaluated on a case by case basis. Modifications to proposed project features including but not limited to access routes, spoil placement, well sites, flowlines and appurtenant structures may be required by the Department of Wildlife and Fisheries.
3. Compensatory mitigation will be required to offset unavoidable wetland impacts. Mitigation will be required to offset avoidable wetland impacts.
4. Removal of all structures, facilities and equipment will be required within 120 days of abandonment unless otherwise agreed to by the Louisiana Department of Wildlife and Fisheries.
5. No activities will be allowed during the hunting season unless approved by the Department.
6. Compliance with the said WMA regulations will be required unless otherwise specified by the Department.
7. Prior to submitting applications for wetland permits to Federal and State permitting agencies the lease holder shall coordinate project details with the Louisiana Department of Wildlife and Fisheries, Fur and Refuge Division. Contact person for the Department will be Mike Windham at (504) 568-5886.

NOTE: The Department will require a minimum bonus of \$350 per acre and a minimum royalty of 25%.

NOTE: The State of Louisiana does hereby reserve, and this lease shall be subject to, the imprescriptible right of surface use in the nature of a servitude in favor of the Department of Natural Resources, including its Offices and Commissions, for the sole purpose of implementing, constructing, servicing and maintaining approved coastal zone management and/or restoration projects. Utilization of any and all rights derived under this lease by the mineral lessee, its agents, successors or assigns, shall not interfere with nor hinder the reasonable surface use by the Department of Natural Resources, its Offices or Commissions, as herein above reserved.

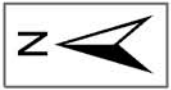
NOTE: It appears, according to our records, that a portion of this Tract is located within the restrictive safety fairway area as set out by the Corps of Engineers, U.S. Army and/or the restrictive anchorage area as set out by the U.S. Coast Guard.

NOTE: The Department of Wildlife and Fisheries has designated certain areas in the coastal waters of the State of Louisiana as Oyster Seed Bed Areas. The exact location of those Seed Bed Areas must be obtained from the Department of Wildlife and Fisheries and any work done under a mineral lease from the State of Louisiana may necessarily be conducted in

conformity with the rules and regulations promulgated by the said Department of Wildlife and Fisheries for Oyster Seed Bed Areas.

Applicant: Lee Sonnier, Iii

Bidder	Cash Payment	Price/Acre	Rental	Oil	Gas	Other



SOUTH PASS AREA

P.O.B.
X=2,719,234.00
Y=141,174.00

BLOCK SP0019

SL 17061

SL 17060

SL 15763



PLAQUEMINES PARISH

PASS-A-LOUTRE WMA

BLOCK SP0020

SL 14860

Coastline