

TRACT 36481 - Vermilion Parish, Louisiana

All of the mineral rights under such land the title, less and except the said mineral rights, of which does not vest with the State, and all lands together with the mineral rights now or formerly constituting the beds and bottoms of all water bodies of every nature and description the title of which vests in the State of Louisiana, together with all islands arising therein and other lands formed by accretion or by reliction, where allowed by law, excepting tax adjudicated lands, where said mineral rights are not presently under mineral lease on July 14, 2004 situated in Vermilion Parish, Louisiana, located within the geographical boundaries more particularly described as follows: Beginning at a point having Coordinates of X = 1,718,313.00 and Y = 328,162.35; Thence North 77 degrees 53 minutes 58 seconds East 5,371.34 feet to a point having Coordinates of X = 1,723,565.00 and Y = 329,288.33; Thence South 1,308.80 feet to a point on the Coastline as defined by the report of the Special Master and set forth in the judgment decree in June of 1975 by the Supreme Court of the United States in the litigation styled United States v. State of Louisiana, et al No. 9 Original, having Coordinates of X = 1,723,565.00 and Y = 327,979.53; Thence along the said Coastline the following courses: Southwesterly to a point having Coordinates of X = 1,722,884.00 and Y = 327,774.00; Southwesterly to a point having Coordinates of X = 1,721,682.00 and Y = 327,214.00; Southwesterly to the Northeast corner of Block 9, said corner also being the Northwest corner of Block 10, Vermilion Area, having Coordinates of X = 1,721,172.41 and Y = 326,945.66; Southwesterly to a point having Coordinates of X = 1,720,140.00 and Y = 326,402.00; Southwesterly to a point having Coordinates of X = 1,718,313.00 and Y = 325,134.69; Thence North 3,027.66 feet to the point of beginning, **LESS AND EXCEPT** those portions of Sections 7, 11, and 12, Township 17 South Range 2 East, as depicted and set forth on the Township Plat originally surveyed by Rightor & McCollam in 1837-1838 and ultimately accepted by the Surveyor General for sales therefrom as of June 13, 1857, containing approximately **190 acres**, all as more particularly outlined on a plat on file in the Office of Mineral Resources, Department of Natural Resources. All bearings, distances and coordinates are based on Louisiana Coordinate System of 1927, (North or South Zone), where applicable.

NOTE: The above description of the Tract nominated for lease has been provided and corrected, where required, exclusively by the nomination party. Any mineral lease selected from this Tract and awarded by the Louisiana State Mineral Board shall be without warranty of any kind, either express, implied, or statutory, including, but not limited to, the implied warranties of merchantability and fitness for a particular purpose. Should the mineral lease awarded by the Louisiana State Mineral Board be subsequently modified, cancelled or abrogated due to the existence of conflicting leases, operating agreements, private claims or other future obligations or conditions which may affect all or any portion of the leased Tract, it shall not relieve the Lessee of the obligation to pay any bonus due thereon to the Louisiana State Mineral Board, nor shall the Louisiana State Mineral Board be obligated to refund any consideration

paid by the Lessor prior to such modification, cancellation, or abrogation, including, but not limited to, bonuses, rentals and royalties.

NOTE: The State of Louisiana does hereby reserve, and this lease shall be subject to, the imprescriptible right of surface use in the nature of a servitude in favor of the Department of Natural Resources, including its Offices and Commissions, for the sole purpose of implementing, constructing, servicing and maintaining approved coastal zone management and/or restoration projects. Utilization of any and all rights derived under this lease by the mineral lessee, its agents, successors or assigns, shall not interfere with nor hinder the reasonable surface use by the Department of Natural Resources, its Offices or Commissions, as herein above reserved.

NOTE: The Department of Wildlife and Fisheries has designated certain areas in the coastal waters of the State of Louisiana as Oyster Seed Bed Areas. The exact location of those Seed Bed Areas must be obtained from the Department of Wildlife and Fisheries and any work done under a mineral lease from the State of Louisiana may necessarily be conducted in conformity with the rules and regulations promulgated by the said Department of Wildlife and Fisheries for Oyster Seed Bed Areas.

Applicant: Woodland Petroleum Corporation

Bidder	Cash Payment	Price/Acre	Rental	Oil	Gas	Other



VERMILION PARISH

T17S - R2E

P.O.B.
X=1,718,313.00
Y=328,162.35

BLOCK VR0010

VERMILION AREA, REVISED

BLOCK VR0009

TRACT 36482 - Vermilion Parish, Louisiana

All of the mineral rights under such land the title, less and except the said mineral rights, of which does not vest with the State, and all lands together with the mineral rights now or formerly constituting the beds and bottoms of all water bodies of every nature and description the title of which vests in the State of Louisiana, together with all islands arising therein and other lands formed by accretion or by reliction, where allowed by law, excepting tax adjudicated lands, where said mineral rights are not presently under mineral lease on July 14, 2004 situated in Vermilion Parish, Louisiana, located within the geographical boundaries more particularly described as follows: Beginning at a point having Coordinates of X = 1,718,313.00 and Y = 328,162.35; Thence South 3,027.66 feet to a point on the Coastline as defined by the report of the Special Master and set forth in the judgment decree in June of 1975 by the Supreme Court of the United States in the litigation styled United States v. State of Louisiana, et al No. 9 Original, having Coordinates of X = 1,718,313.00 and Y = 325,134.69; Thence along the said Coastline the following courses: Southwesterly to a point having Coordinates of X = 1,717,114.00 and Y = 324,303.00; Southwesterly to a point having Coordinates of X = 1,713,035.00 and Y = 321,802.00; Thence North 3,489.24 feet to a point having Coordinates of X = 1,713,035.00 and Y = 325,291.64; Thence North 61 degrees 27 minutes 29 seconds East 6,008.18 feet to the point of beginning, **LESS AND EXCEPT** those portions of Sections 11, 12, 14, and 15, Township 17 South Range 2 East as depicted and set forth on the Township Plat originally surveyed by Rightor & McCollam in 1837-1838 and ultimately accepted by the Surveyor General for sales therefrom as of June 13, 1859, containing approximately **344 acres**, all as more particularly outlined on a plat on file in the Office of Mineral Resources, Department of Natural Resources. All bearings, distances and coordinates are based on Louisiana Coordinate System of 1927, (North or South Zone), where applicable.

NOTE: The above description of the Tract nominated for lease has been provided and corrected, where required, exclusively by the nomination party. Any mineral lease selected from this Tract and awarded by the Louisiana State Mineral Board shall be without warranty of any kind, either express, implied, or statutory, including, but not limited to, the implied warranties of merchantability and fitness for a particular purpose. Should the mineral lease awarded by the Louisiana State Mineral Board be subsequently modified, cancelled or abrogated due to the existence of conflicting leases, operating agreements, private claims or other future obligations or conditions which may affect all or any portion of the leased Tract, it shall not relieve the Lessee of the obligation to pay any bonus due thereon to the Louisiana State Mineral Board, nor shall the Louisiana State Mineral Board be obligated to refund any consideration paid by the Lessor prior to such modification, cancellation, or abrogation, including, but not limited to, bonuses, rentals and royalties.

NOTE: The State of Louisiana does hereby reserve, and this lease shall be subject to, the imprescriptible right of surface use in the nature of a

servitude in favor of the Department of Natural Resources, including its Offices and Commissions, for the sole purpose of implementing, constructing, servicing and maintaining approved coastal zone management and/or restoration projects. Utilization of any and all rights derived under this lease by the mineral lessee, its agents, successors or assigns, shall not interfere with nor hinder the reasonable surface use by the Department of Natural Resources, its Offices or Commissions, as herein above reserved.

NOTE: The Department of Wildlife and Fisheries has designated certain areas in the coastal waters of the State of Louisiana as Oyster Seed Bed Areas. The exact location of those Seed Bed Areas must be obtained from the Department of Wildlife and Fisheries and any work done under a mineral lease from the State of Louisiana may necessarily be conducted in conformity with the rules and regulations promulgated by the said Department of Wildlife and Fisheries for Oyster Seed Bed Areas.

Applicant: Woodland Petroleum Corporation

Bidder	Cash Payment	Price/Acre	Rental	Oil	Gas	Other



P.O.B.
X=1,718,313.00
Y=328,162.35

VERMILION PARISH

T17S - R2E

BLOCK VR0009

VERMILION AREA, REVISED



TRACT 36483 - Vermilion Parish, Louisiana

All of the mineral rights under such land the title, less and except the said mineral rights, of which does not vest with the State, and all lands together with the mineral rights now or formerly constituting the beds and bottoms of all water bodies of every nature and description the title of which vests in the State of Louisiana, together with all islands arising therein and other lands formed by accretion or by reliction, where allowed by law, excepting tax adjudicated lands, where said mineral rights are not presently under mineral lease on July 14, 2004 situated in Vermilion Parish, Louisiana, located within the geographical boundaries more particularly described as follows: Beginning at a point having Coordinates of X = 1,707,743.00 and Y = 322,117.17; Thence North 59 degrees 02 minutes 31 seconds East 6,171.10 feet to a point having Coordinates of X = 1,713,035.00 and Y = 325,291.64; Thence South 3,489.23 feet to a point on the Coastline as defined by the report of the Special Master and set forth in the judgment decree in June of 1975 by the Supreme Court of the United States in the litigation styled United States v. State of Louisiana, et al No. 9 Original, having Coordinates of X = 1,713,035.00 and Y = 321,802.40; Thence along the said Coastline the following courses: Southwesterly to a point having Coordinates of X = 1,711,532.00 and Y = 320,881.00; Southwesterly to a point having Coordinates of X = 1,709,968.00 and Y = 319,818.00; Southwesterly to a point having Coordinates of X = 1,708,756.00 and Y = 318,661.00; Thence Southwesterly 1,091.92 feet to a point having Coordinates of X = 1,707,743.00 and Y = 318,253.43; Thence North 3,863.74 feet to the point of beginning, **LESS AND EXCEPT** those portions of Sections 14, 15, 16, and 21, Township 17 South Range 2 East as depicted and set forth on the Township Plat originally surveyed by Rightor & McCollam in 1837-1838 and ultimately accepted by the Surveyor General for sales therefrom as of June 13, 1859, containing approximately **427 acres**, all as more particularly outlined on a plat on file in the Office of Mineral Resources, Department of Natural Resources. All bearings, distances and coordinates are based on Louisiana Coordinate System of 1927, (North or South Zone), where applicable.

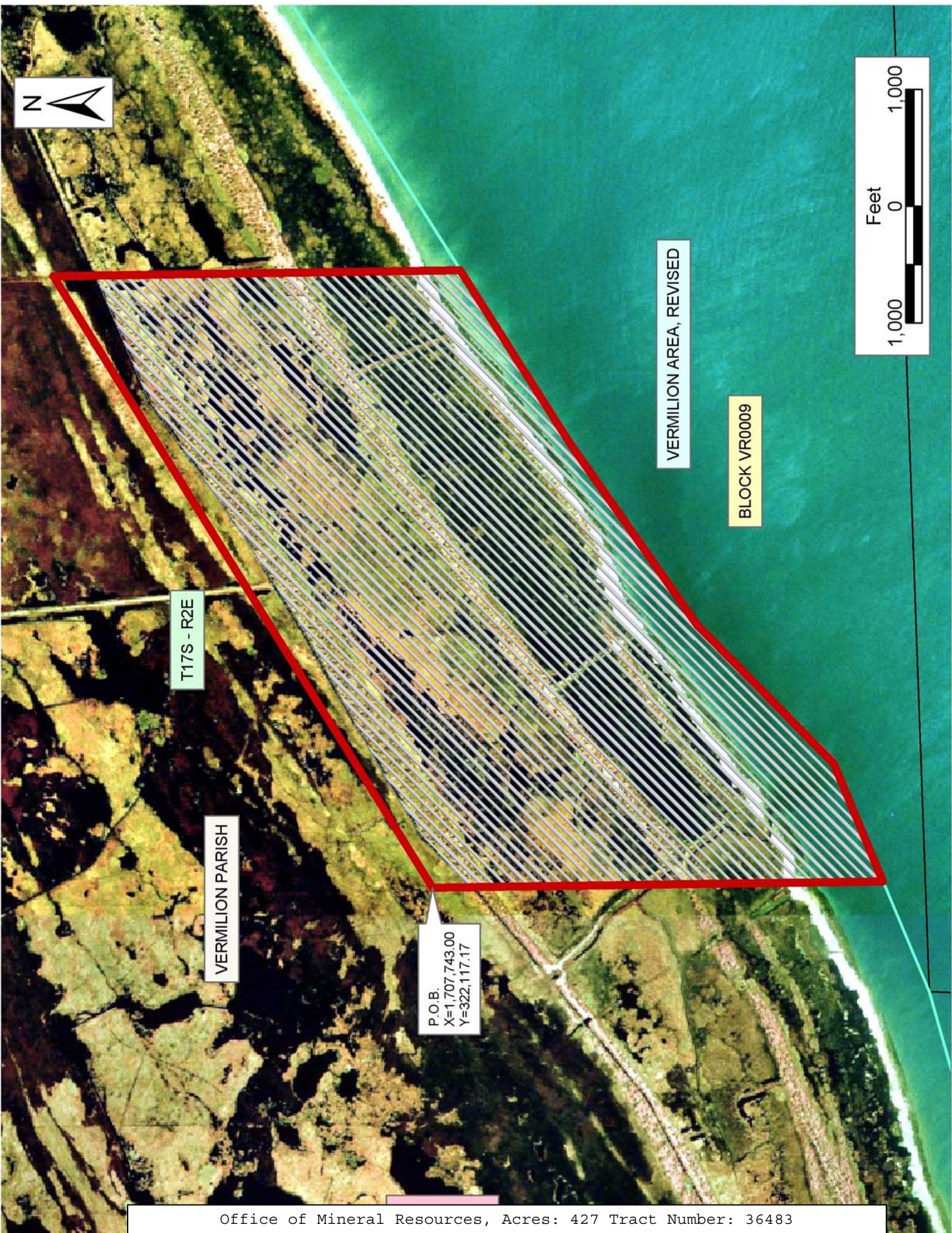
NOTE: The above description of the Tract nominated for lease has been provided and corrected, where required, exclusively by the nomination party. Any mineral lease selected from this Tract and awarded by the Louisiana State Mineral Board shall be without warranty of any kind, either express, implied, or statutory, including, but not limited to, the implied warranties of merchantability and fitness for a particular purpose. Should the mineral lease awarded by the Louisiana State Mineral Board be subsequently modified, cancelled or abrogated due to the existence of conflicting leases, operating agreements, private claims or other future obligations or conditions which may affect all or any portion of the leased Tract, it shall not relieve the Lessee of the obligation to pay any bonus due thereon to the Louisiana State Mineral Board, nor shall the Louisiana State Mineral Board be obligated to refund any consideration paid by the Lessor prior to such modification, cancellation, or abrogation, including, but not limited to, bonuses, rentals and royalties.

NOTE: The State of Louisiana does hereby reserve, and this lease shall be subject to, the imprescriptible right of surface use in the nature of a servitude in favor of the Department of Natural Resources, including its Offices and Commissions, for the sole purpose of implementing, constructing, servicing and maintaining approved coastal zone management and/or restoration projects. Utilization of any and all rights derived under this lease by the mineral lessee, its agents, successors or assigns, shall not interfere with nor hinder the reasonable surface use by the Department of Natural Resources, its Offices or Commissions, as herein above reserved.

NOTE: The Department of Wildlife and Fisheries has designated certain areas in the coastal waters of the State of Louisiana as Oyster Seed Bed Areas. The exact location of those Seed Bed Areas must be obtained from the Department of Wildlife and Fisheries and any work done under a mineral lease from the State of Louisiana may necessarily be conducted in conformity with the rules and regulations promulgated by the said Department of Wildlife and Fisheries for Oyster Seed Bed Areas.

Applicant: Woodland Petroleum Corporation

Bidder	Cash Payment	Price/Acre	Rental	Oil	Gas	Other



VERMILION AREA, REVISED

BLOCK VR0009

T17S - R2E

VERMILION PARISH

P.O.B.
X=1,707,743.00
Y=322,117.17



TRACT 36484 - Vermilion Parish, Louisiana

All of the mineral rights under such land the title, less and except the said mineral rights, of which does not vest with the State, and all lands together with the mineral rights now or formerly constituting the beds and bottoms of all water bodies of every nature and description the title of which vests in the State of Louisiana, together with all islands arising therein and other lands formed by accretion or by reliction, where allowed by law, excepting tax adjudicated lands, where said mineral rights are not presently under mineral lease on July 14, 2004 situated in Vermilion Parish, Louisiana, located within the geographical boundaries more particularly described as follows: Beginning at a point having Coordinates of X = 1,707,743.00 and Y = 322,117.17; Thence South 3,863.74 feet to a point on the Coastline as defined by the report of the Special Master and set forth in the judgment decree in June of 1975 by the Supreme Court of the United States in the litigation styled United States v. State of Louisiana, et al No. 9 Original, having Coordinates of X = 1,707,743.00 and Y = 318,253.43; Thence along the said Coastline the following courses: Southwesterly to a point having Coordinates of X = 1,706,790.00 and Y = 317,870.00, Southwesterly to a point being the Northwest corner of Block 9, Vermilion Area, having Coordinates of X = 1,706,414.36 and Y = 317,770.27, Southwesterly to a point having Coordinates of X = 1,705,708.33 and Y = 317,582.82; Thence West 3,276.33 feet to a point having Coordinates of X = 1,702,432.00 and Y = 317,582.82; Thence North 1,509.19 feet to a point having Coordinates of X = 1,702,432.00 and Y = 319,092.01; Thence North 60 degrees 20 minutes 03 seconds East 6,112.14 feet to the point of beginning, **LESS AND EXCEPT** those portions of Sections 15, 16, 20, and 21, Township 17 South Range 2 East as depicted and set forth on the Township Plat originally surveyed by Rightor & McCollam in 1837-1838 and ultimately accepted by the Surveyor General for sales therefrom as of June 13, 1859, containing approximately **285 acres**, all as more particularly outlined on a plat on file in the Office of Mineral Resources, Department of Natural Resources. All bearings, distances and coordinates are based on Louisiana Coordinate System of 1927, (North or South Zone), where applicable.

NOTE: The above description of the Tract nominated for lease has been provided and corrected, where required, exclusively by the nomination party. Any mineral lease selected from this Tract and awarded by the Louisiana State Mineral Board shall be without warranty of any kind, either express, implied, or statutory, including, but not limited to, the implied warranties of merchantability and fitness for a particular purpose. Should the mineral lease awarded by the Louisiana State Mineral Board be subsequently modified, cancelled or abrogated due to the existence of conflicting leases, operating agreements, private claims or other future obligations or conditions which may affect all or any portion of the leased Tract, it shall not relieve the Lessee of the obligation to pay any bonus due thereon to the Louisiana State Mineral Board, nor shall the Louisiana State Mineral Board be obligated to refund any consideration

paid by the Lessor prior to such modification, cancellation, or abrogation, including, but not limited to, bonuses, rentals and royalties.

NOTE: The State of Louisiana does hereby reserve, and this lease shall be subject to, the imprescriptible right of surface use in the nature of a servitude in favor of the Department of Natural Resources, including its Offices and Commissions, for the sole purpose of implementing, constructing, servicing and maintaining approved coastal zone management and/or restoration projects. Utilization of any and all rights derived under this lease by the mineral lessee, its agents, successors or assigns, shall not interfere with nor hinder the reasonable surface use by the Department of Natural Resources, its Offices or Commissions, as herein above reserved.

NOTE: The Department of Wildlife and Fisheries has designated certain areas in the coastal waters of the State of Louisiana as Oyster Seed Bed Areas. The exact location of those Seed Bed Areas must be obtained from the Department of Wildlife and Fisheries and any work done under a mineral lease from the State of Louisiana may necessarily be conducted in conformity with the rules and regulations promulgated by the said Department of Wildlife and Fisheries for Oyster Seed Bed Areas.

Applicant: Woodland Petroleum Corporation

Bidder	Cash Payment	Price/Acre	Rental	Oil	Gas	Other



P.O.B.
X=1,707,743.00
Y=322,117.17

VERMILION PARISH

T17S - R2E

VERMILION AREA, REVISED

BLOCK VR0008

BLOCK VR0012



TRACT 36485 - Portion of Block 50, Breton Sound Area, Plaquemines Parish, Louisiana

All of the lands now or formerly constituting the beds and bottoms of all water bodies of every nature and description the title of which vests in the State of Louisiana, together with all islands arising therein and other lands formed by accretion or by reliction, where allowed by law, excepting tax adjudicated lands, and not presently under mineral lease on July 14, 2004, situated in Plaquemines Parish, Louisiana, and more particularly described as follows: Beginning at a point having Coordinates of X = 2,650,100.00 and Y = 292,830.00, said point being the Northwest corner of Block 50, Breton Sound Area; Thence East 8,350.00 feet on and along the North line of said Block 50, Breton Sound Area, to a point having Coordinates of X = 2,658,450.00 and Y = 292,830.00, said point being the Northwest corner of State Lease No. 17487; Thence on and along the Western, Southern and Eastern boundaries of said State Lease No. 17487 the following courses and distances, to wit: South 4,500.00 feet to a point having Coordinates of X = 2,658,450.00 and Y = 288,330.00, said point being the Southwest corner of said State Lease No. 17487; East 2,300.00 feet to a point having Coordinates of X = 2,660,750.00 and Y = 288,330.00, said point being the Southeast corner of said State Lease No. 17487; and North 4,500.00 feet to a point having Coordinates of X = 2,660,750.00 and Y = 292,830.00, said point being the Northeast corner of said State Lease No. 17487, said point also being on said North line of said Block 50; Thence East 4,100.00 feet on and along said North line of said Block 50, to a point having Coordinates of X = 2,664,850.00 and Y = 292,830.00, said point also being the Northeast corner of Block 50; Thence South 7,375.00 feet on and along the East line of said Block 50, to a point having Coordinates of X = 2,664,850.00 and Y = 285,455.00; Thence West 14,750.00 feet to a point having Coordinates of X = 2,650,100.00 and Y = 285,455.00, said point being on the West line of said Block 50; Thence North 7,375.00 feet on and along said West line of said Block 50, to the point of beginning, containing approximately **2,259.67 acres**, all as more particularly outlined on a plat on file in the Office of Mineral Resources, Department of Natural Resources. All bearings, distances and coordinates are based on Louisiana Coordinate System of 1927, (North or South Zone), where applicable.

NOTE: The above description of the Tract nominated for lease has been provided and corrected, where required, exclusively by the nomination party. Any mineral lease selected from this Tract and awarded by the Louisiana State Mineral Board shall be without warranty of any kind, either express, implied, or statutory, including, but not limited to, the implied warranties of merchantability and fitness for a particular purpose. Should the mineral lease awarded by the Louisiana State Mineral Board be subsequently modified, cancelled or abrogated due to the existence of conflicting leases, operating agreements, private claims or other future obligations or conditions which may affect all or any portion of the leased Tract, it shall not relieve the Lessee of the obligation to pay any bonus due thereon to the Louisiana State Mineral Board, nor shall

the Louisiana State Mineral Board be obligated to refund any consideration paid by the Lessor prior to such modification, cancellation, or abrogation, including, but not limited to, bonuses, rentals and royalties.

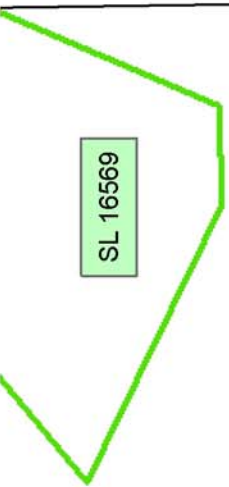
NOTE: The State of Louisiana does hereby reserve, and this lease shall be subject to, the imprescriptible right of surface use in the nature of a servitude in favor of the Department of Natural Resources, including its Offices and Commissions, for the sole purpose of implementing, constructing, servicing and maintaining approved coastal zone management and/or restoration projects. Utilization of any and all rights derived under this lease by the mineral lessee, its agents, successors or assigns, shall not interfere with nor hinder the reasonable surface use by the Department of Natural Resources, its Offices or Commissions, as herein above reserved.

Applicant: Robert A. Schroeder, Inc.

Bidder	Cash Payment	Price/Acre	Rental	Oil	Gas	Other



SL 16569

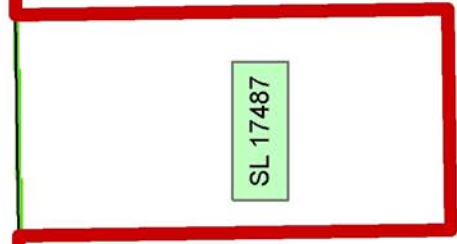


BLOCK BS0047

BRETON SOUND AREA

P.O.B.
X=2,650,100.00
Y=292,830.00

SL 17487



BLOCK BS0050

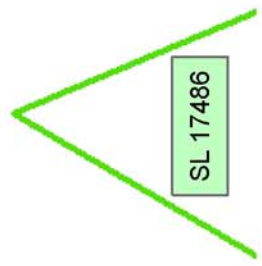
SL 17239



PLAQUEMINES PARISH



SL 17486



TRACT 36486 - Portion of Block 51, Breton Sound Area, Plaquemines Parish, Louisiana

All of the lands now or formerly constituting the beds and bottoms of all water bodies of every nature and description the title of which vests in the State of Louisiana, together with all islands arising therein and other lands formed by accretion or by reliction, where allowed by law, excepting tax adjudicated lands, and not presently under mineral lease on July 14, 2004, situated in Plaquemines Parish, Louisiana, and more particularly described as follows: Beginning at the Northwest corner of Block 51, Breton Sound Area, having Coordinates of X = 2,664,850.00 and Y = 292,830.00; thence East 13,316.42 feet on and along the North line of said Block 51, to a point having Coordinates of X = 2,678,166.42 and Y = 292,830.00; thence South 06 degrees 06 minutes 01 seconds East 7,417.00 feet to a point having Coordinates of X = 2,678,954.61 and Y = 285,455.00; thence West 3,668.29 feet to a point on the Eastern boundary of State Lease No. 17243, having Coordinates of X = 2,675,286.32 and Y = 285,455.00, also being the most Northerly Northeast corner of State Lease No. 17245; thence on and along the Eastern and Northern boundaries of said State Lease No. 17243 the following courses and distances, to wit: North 39 degrees 23 minutes 04 seconds East 782.76 feet to a point having Coordinates of X = 2,675,783.00 and Y = 286,060.00; North 1,332.00 feet to a point having Coordinates of X = 2,675,783.00 and Y = 287,392.00; and West 1,601.14 feet to a point having Coordinates of X = 2,674,181.86 and Y = 287,392.00, said point being on the Eastern boundary of State Lease No. 16890; thence on and along the Eastern, Northern and Western boundaries of said State Lease No. 16890 the following courses and distances, to wit: North 01 degrees 37 minutes 30 seconds West 738.30 feet to a point having Coordinates of X = 2,674,160.92 and Y = 288,130.00; West 1,289.48 feet to a point having Coordinates of X = 2,672,871.44 and Y = 288,130.00; South 73 degrees 14 minutes 31 seconds West 2,393.07 feet to a point having Coordinates of X = 2,670,580.00 and Y = 287,440.00; and South 05 degrees 15 minutes 21 seconds East 1,993.38 feet to a point having Coordinates of X = 2,670,762.60 and Y = 285,455.00, said point being on the Northern boundary of said State Lease No. 17245; thence West 1,776.60 feet on and along said Northern boundary of said State Lease No. 17245 to a point having Coordinates of X = 2,668,986.00 and Y = 285,455.00; thence West 4,136.00 feet to a point having Coordinates of X = 2,664,850.00 and Y = 285,455.00, said point being on the West line of said Block 51; thence North 7,375.00 feet on and along said West line, to the point of beginning, containing approximately **2,054.83 acres**, all as more particularly outlined on a plat on file in the Office of Mineral Resources, Department of Natural Resources. All bearings, distances and coordinates are based on Louisiana Coordinate System of 1927, (North or South Zone), where applicable.

NOTE: The above description of the Tract nominated for lease has been provided and corrected, where required, exclusively by the nomination party. Any mineral lease selected from this Tract and awarded by the Louisiana State Mineral Board shall be without warranty of any kind,

either express, implied, or statutory, including, but not limited to, the implied warranties of merchantability and fitness for a particular purpose. Should the mineral lease awarded by the Louisiana State Mineral Board be subsequently modified, cancelled or abrogated due to the existence of conflicting leases, operating agreements, private claims or other future obligations or conditions which may affect all or any portion of the leased Tract, it shall not relieve the Lessee of the obligation to pay any bonus due thereon to the Louisiana State Mineral Board, nor shall the Louisiana State Mineral Board be obligated to refund any consideration paid by the Lessor prior to such modification, cancellation, or abrogation, including, but not limited to, bonuses, rentals and royalties.

NOTE: The State of Louisiana does hereby reserve, and this lease shall be subject to, the imprescriptible right of surface use in the nature of a servitude in favor of the Department of Natural Resources, including its Offices and Commissions, for the sole purpose of implementing, constructing, servicing and maintaining approved coastal zone management and/or restoration projects. Utilization of any and all rights derived under this lease by the mineral lessee, its agents, successors or assigns, shall not interfere with nor hinder the reasonable surface use by the Department of Natural Resources, its Offices or Commissions, as herein above reserved.

Applicant: Robert A. Schroeder, Inc

Bidder	Cash Payment	Price/Acre	Rental	Oil	Gas	Other



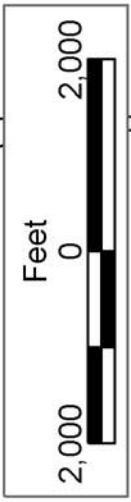
PLAQUEMINES PARISH

BLOCK BS0046

BRETON SOUND AREA

BLOCK BS0051

P.O.B.
X=2,664,850.00
Y=292,830.00



SL 17243

SL 16890

SL 17245

TRACT 36487 - Terrebonne Parish, Louisiana

All of the lands now or formerly constituting the beds and bottoms of all water bodies of every nature and description the title of which vests in the State of Louisiana, together with all islands arising therein and other lands formed by accretion or by reliction, where allowed by law, excepting tax adjudicated lands, and not presently under mineral lease on July 14, 2004, situated in Terrebonne Parish, Louisiana, and more particularly described as follows: Beginning at the Southwest corner of State Lease No. 17531 and a point on the North Line of State Lease No. 17335 having Coordinates of X = 2,044,380.00 and Y = 293,280.00; thence along the North boundary of said State Lease No. 17335 West 4,980.00 feet to its Northwest corner having Coordinates of X = 2,039,400.00 and Y = 293,280.00; thence North 7,792.84 feet to a point having Coordinates of X = 2,039,400.00 and Y = 301,072.84; thence East 10,148.78 feet to a point having Coordinates of X = 2,049,548.78 and Y = 301,072.84; thence South 2,382.84 feet to a point on the North line of State Lease No. 17531 having Coordinates of X = 2,049,548.78 and Y = 298,690.00; thence along the boundaries of said State Lease No. 17531 the following: West 2,498.78 feet to a point having Coordinates of X = 2,047,050.00 and Y = 298,690.00, South 2,620.00 feet to a point having Coordinates of X = 2,047,050.00 and Y = 296,070.00, West 2,670.00 feet to a point having Coordinates of X = 2,044,380.00 and Y = 296,070.00, and South 2,790.00 feet to the point of beginning, containing approximately **18.00 acres**, all as more particularly outlined on a plat on file in the Office of Mineral Resources, Department of Natural Resources. All bearings, distances and coordinates are based on Louisiana Coordinate System of 1927, (North or South Zone), where applicable.

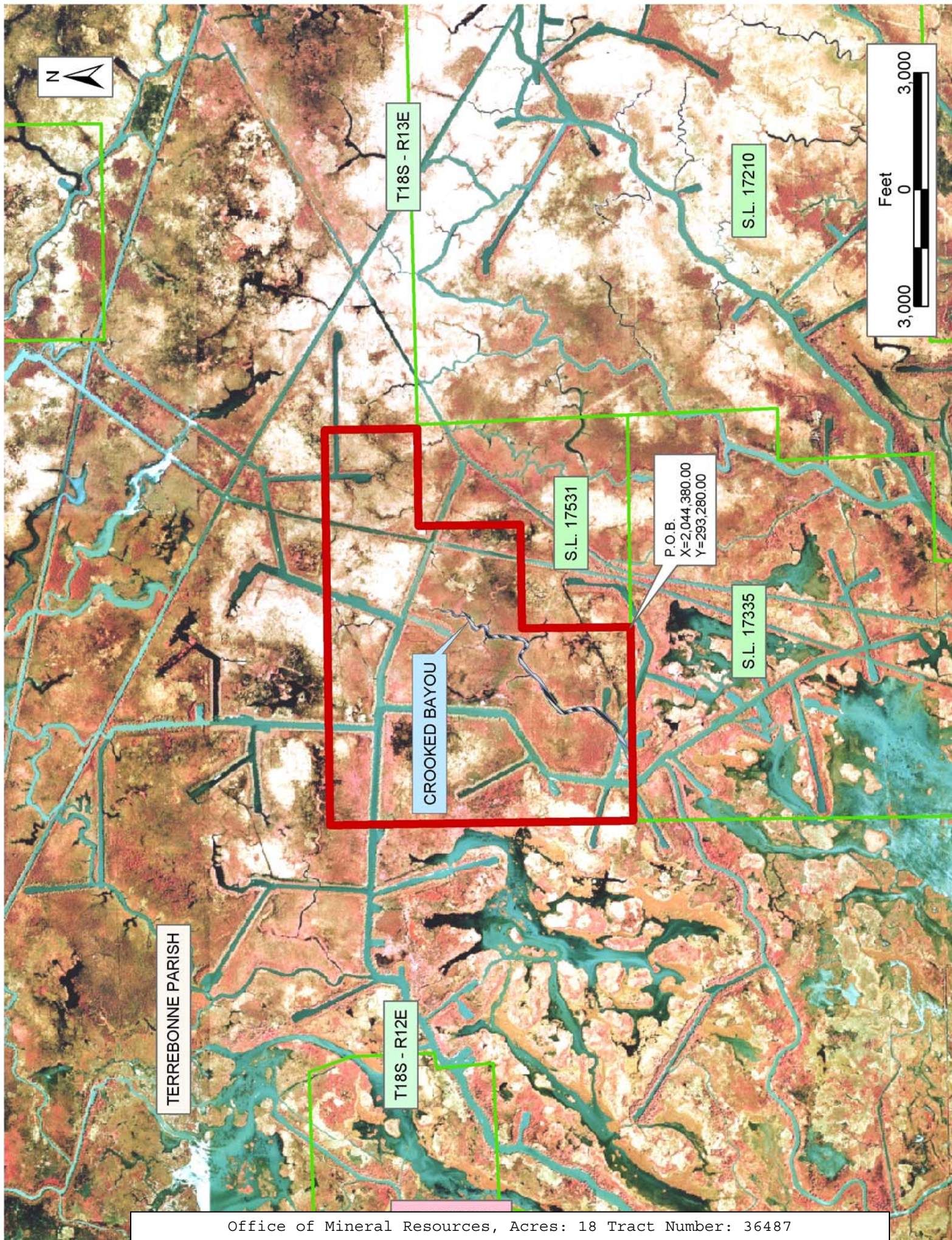
NOTE: The above description of the Tract nominated for lease has been provided and corrected, where required, exclusively by the nomination party. Any mineral lease selected from this Tract and awarded by the Louisiana State Mineral Board shall be without warranty of any kind, either express, implied, or statutory, including, but not limited to, the implied warranties of merchantability and fitness for a particular purpose. Should the mineral lease awarded by the Louisiana State Mineral Board be subsequently modified, cancelled or abrogated due to the existence of conflicting leases, operating agreements, private claims or other future obligations or conditions which may affect all or any portion of the leased Tract, it shall not relieve the Lessee of the obligation to pay any bonus due thereon to the Louisiana State Mineral Board, nor shall the Louisiana State Mineral Board be obligated to refund any consideration paid by the Lessor prior to such modification, cancellation, or abrogation, including, but not limited to, bonuses, rentals and royalties.

NOTE: The State of Louisiana does hereby reserve, and this lease shall be subject to, the imprescriptible right of surface use in the nature of a servitude in favor of the Department of Natural Resources, including its Offices and Commissions, for the sole purpose of implementing, constructing, servicing and maintaining approved coastal zone management

and/or restoration projects. Utilization of any and all rights derived under this lease by the mineral lessee, its agents, successors or assigns, shall not interfere with nor hinder the reasonable surface use by the Department of Natural Resources, its Offices or Commissions, as herein above reserved.

Applicant: Leslie L. Moore

Bidder	Cash Payment	Price/Acre	Rental	Oil	Gas	Other



TRACT 36488 - Portion of Block 49, Breton Sound Area, Plaquemines Parish, Louisiana

All of the lands now or formerly constituting the beds and bottoms of all water bodies of every nature and description the title of which vests in the State of Louisiana, together with all islands arising therein and other lands formed by accretion or by reliction, where allowed by law, excepting tax adjudicated lands, and not presently under mineral lease on July 14, 2004, situated in Plaquemines Parish, Louisiana, and more particularly described as follows: Beginning at a point having Coordinates of X = 2,635,350.00 and Y = 292,830.00, said point being the Northwest corner of Block 49, Breton Sound Area; Thence East 801.00 feet on and along the north line of said Block 49, to a point having Coordinates of X = 2,636,151.00 and Y = 292,830.00, said point being the Northwest corner of State Lease No. 17242; Thence on and along the Western, Southern and Eastern boundaries of said State Lease No. 17242, the following courses and distances, to wit: South 1,639.00 feet to a point having Coordinates of X = 2,636,151.00 and Y = 291,191.00, said point being the Southwest corner of said State Lease No. 17242; East 2,485.00 feet to a point having Coordinates of X = 2,638,636.00 and Y = 291,191.00, said point being the Southeast corner of said State Lease No. 17242; and North 1,639.00 feet to a point having Coordinates of X = 2,638,636.00 and Y = 292,830.00, said point being the Northeast corner of said State Lease No. 17242, said point also being on said North line of said Block 49; Thence East 520.00 feet on and along said North line of said Block 49, to a point having Coordinates of X = 2,639,156.00 and Y = 292,830.00, said point being the Northwest corner of State Lease No. 17241; Thence on and along the Western, Southern and Eastern boundaries of said State Lease No. 17241, the following courses and distances, to wit: South 4,278.00 feet to a point having Coordinates of X = 2,639,156.00 and Y = 288,552.00, said point being the Southwest corner of said State Lease No. 17241; East 3,525.00 feet to a point having Coordinates of X = 2,642,681.00 and Y = 288,552.00, said point being the Southeast corner of said State Lease No. 17241; and North 4,278.00 feet to a point having Coordinates of X = 2,642,681.00 and Y = 292,830.00, said point being the Northeast corner of said State Lease No. 17241, said point also being on said North line of said Block 49; Thence East 7,419.00 feet on and along said North line of said Block 49, to a point having Coordinates of X = 2,650,100.00 and Y = 292,830.00, said point being the Northeast corner of said Block 49; Thence South 890.00 feet on and along the East line of said Block 49, to a point having Coordinates of X = 2,650,100.00 and Y = 291,940.00, said point being the Northeast corner of State Lease No. 17239; Thence on and along the Northern, Western and Southern boundaries of said State Lease No. 17239, the following courses and distances, to wit: West 2,429.00 feet to a point having Coordinates of X = 2,647,671.00 and Y = 291,940.00, said point being the Northwest corner of said State Lease No. 17239; South 2,757.00 feet to a point having Coordinates of X = 2,647,671.00 and Y = 289,183.00, said point being the Southwest corner of said State Lease No. 17239; and East 2,429.00 feet to a point having Coordinates of X = 2,650,100.00 and Y = 289,183.00, said point being the Southeast corner of said State Lease

No. 17239, said point also being on said East line of said Block 49; Thence South 3,728.00 feet on and along said East line of said Block 49, to a point having Coordinates of X = 2,650,100.00 and Y = 285,455.00; Thence West 14,750.00 feet to a point having Coordinates of X = 2,635,350.00 and Y = 285,455.00, said point being on the West line of said Block 49; Thence North 7,375.00 feet on and along said West line of said Block 49, to the point of beginning, **LESS AND EXCEPT** all that portion thereof covered and affected by State Lease No. 17240 and situated within the following described boundaries, to wit: PORTION OF BLOCK 49, BRETON SOUND AREA, PLAQUEMINES PARISH, LOUISIANA, TO WIT: Beginning at a point within Block 49, Breton Sound Area, having Coordinates of X = 2,647,286.00 and Y = 289,791.00, said point being the Northeast corner of said State Lease No. 17240; Thence South 3,021.00 feet to a point having Coordinates of X = 2,647,286.00 and Y = 286,770.00, said point being the Southeast corner of said State Lease No. 17240; Thence West 2,696.00 feet to a point having Coordinates of X = 2,644,590.00 and Y = 286,770.00, said point being the Southwest corner of said State Lease No. 17240; Thence North 3,021.00 feet to a point having Coordinates of X = 2,644,590.00 and Y = 289,791.00, said point being the Northwest corner of said State Lease No. 17240; Thence East 2,696.00 feet to the point of beginning, containing approximately **1716.87 acres**, all as more particularly outlined on a plat on file in the Office of Mineral Resources, Department of Natural Resources. All bearings, distances and coordinates are based on Louisiana Coordinate System of 1927, (North or South Zone), where applicable.

NOTE: The above description of the Tract nominated for lease has been provided and corrected, where required, exclusively by the nomination party. Any mineral lease selected from this Tract and awarded by the Louisiana State Mineral Board shall be without warranty of any kind, either express, implied, or statutory, including, but not limited to, the implied warranties of merchantability and fitness for a particular purpose. Should the mineral lease awarded by the Louisiana State Mineral Board be subsequently modified, cancelled or abrogated due to the existence of conflicting leases, operating agreements, private claims or other future obligations or conditions which may affect all or any portion of the leased Tract, it shall not relieve the Lessee of the obligation to pay any bonus due thereon to the Louisiana State Mineral Board, nor shall the Louisiana State Mineral Board be obligated to refund any consideration paid by the Lessor prior to such modification, cancellation, or abrogation, including, but not limited to, bonuses, rentals and royalties.

NOTE: The State of Louisiana does hereby reserve, and this lease shall be subject to, the imprescriptible right of surface use in the nature of a servitude in favor of the Department of Natural Resources, including its Offices and Commissions, for the sole purpose of implementing, constructing, servicing and maintaining approved coastal zone management and/or restoration projects. Utilization of any and all rights derived under this lease by the mineral lessee, its agents, successors or assigns, shall not interfere with nor hinder the reasonable surface use by the

Department of Natural Resources, its Offices or Commissions, as herein above reserved.

Applicant: Robert A. Schroeder, Inc.

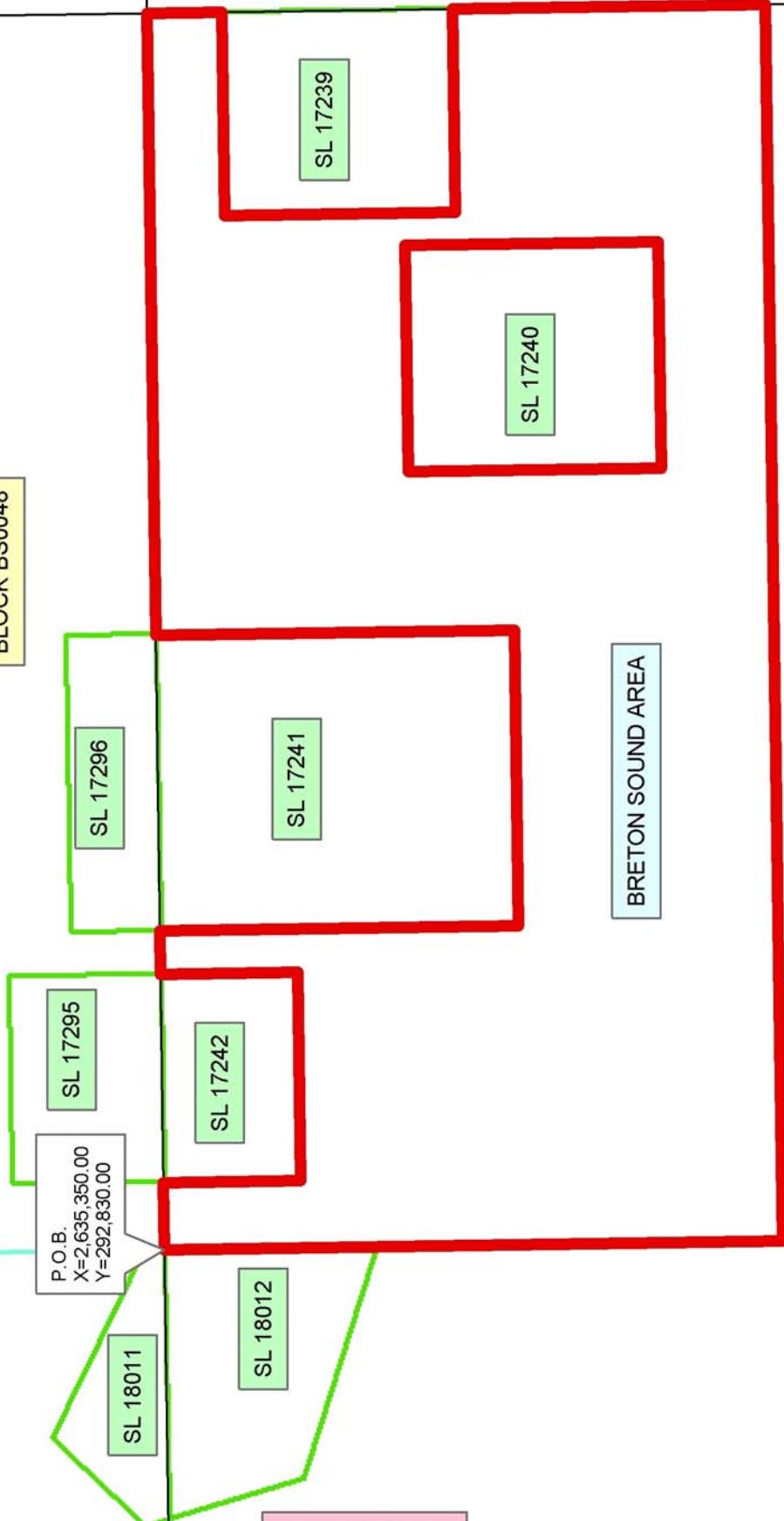
Bidder	Cash Payment	Price/Acre	Rental	Oil	Gas	Other



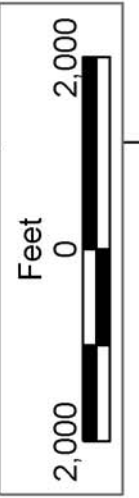
PLAQUEMINES PARISH

BLOCK BS0048

BLOCK BS0049



BRETON SOUND AREA



P.O.B.
X=2,635,350.00
Y=292,830.00

TRACT 36489 - Portion of Block 50, Breton Sound Area, Plaquemines Parish, Louisiana

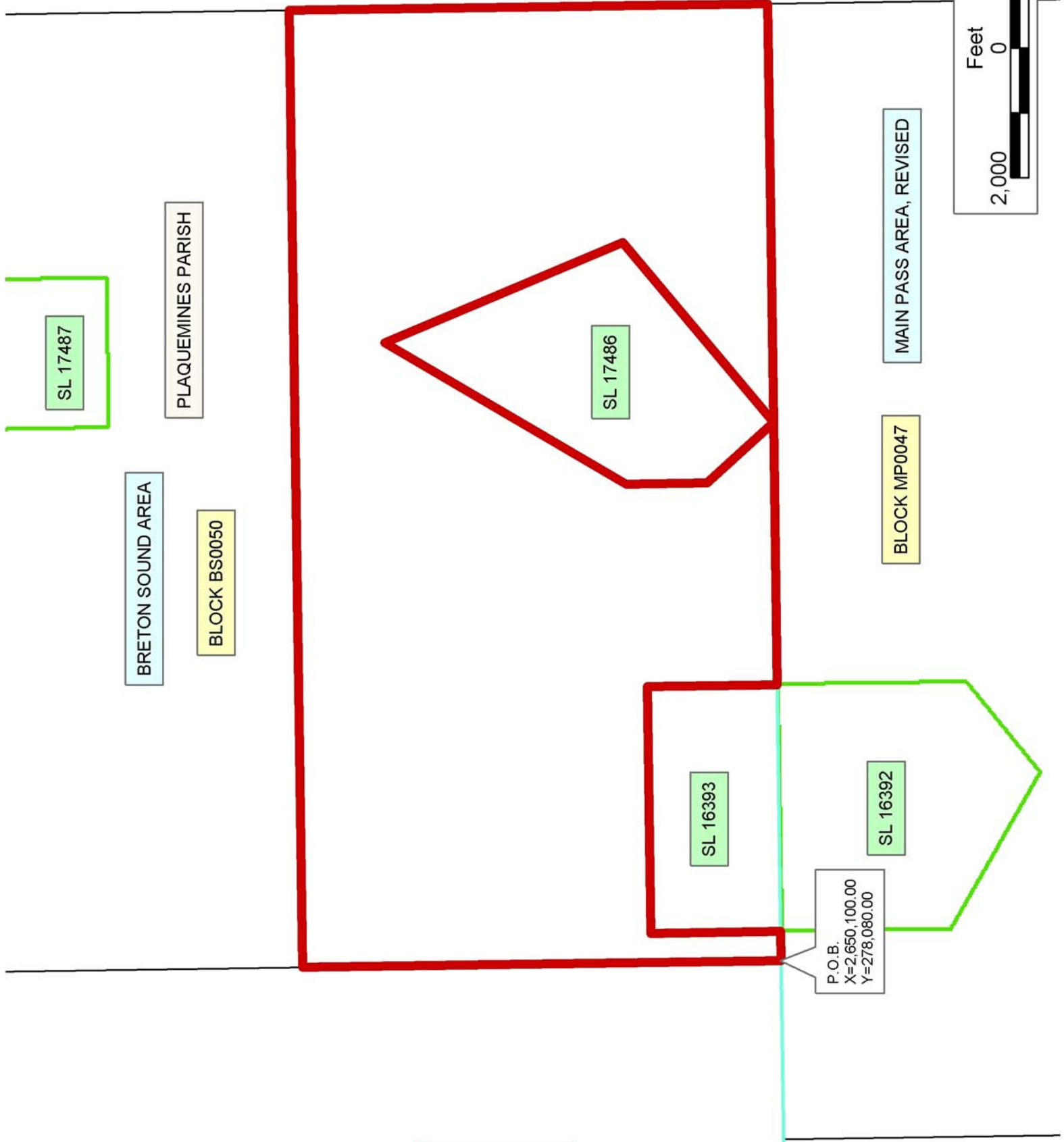
All of the lands now or formerly constituting the beds and bottoms of all water bodies of every nature and description the title of which vests in the State of Louisiana, together with all islands arising therein and other lands formed by accretion or by reliction, where allowed by law, excepting tax adjudicated lands, and not presently under mineral lease on July 14, 2004, situated in Plaquemines Parish, Louisiana, and more particularly described as follows: Beginning at a point having Coordinates of X = 2,650,100.00 and Y = 278,080.00, said point being the Southwest corner of Block 50, Breton Sound Area; thence North 7,375.00 feet on and along the West line of said Block 50, to a point having Coordinates of X = 2,650,100.00 and Y = 285,455.00; thence East 14,750.00 feet to a point having Coordinates of X = 2,664,850.00 and Y = 285,455.00, said point being on the East line of said Block 50; thence South 7,375.00 feet on and along said East line of said Block 50, to point having Coordinates of X = 2,664,850.00 and Y = 278,080.00, said point being the Southeast corner of said Block 50; thence West 6,455.00 feet on and along the South line of said Block 50, to a point having Coordinates of X = 2,658,395.00 and Y = 278,080.00, said point being the Southernmost corner of State Lease No. 17486; thence on and along the Eastern, Northern, Western and Southern boundaries of said State Lease No. 17486 the following courses and distances, to wit: North 50 degrees 49 minutes 59 seconds East 3,617.91 feet to a point having Coordinates of X = 2,661,200.00 and Y = 280,365.00; North 22 degrees 04 minutes 56 seconds West 3,976.71 feet to a point having Coordinates of X = 2,659,705.00 and Y = 284,050.00; South 31 degrees 10 minutes 50 seconds West 4,307.22 feet to a point having Coordinates of X = 2,657,475.00 and Y = 280,365.00; South 1,245.00 feet to a point having Coordinates of X = 2,657,475.00 and Y = 279,120.00; and South 41 degrees 29 minutes 47 seconds East 1,388.52 feet to a point having Coordinates of X = 2,658,395.00 and Y = 278,080.00, said point being on said South line of said Block 50; thence West 4,045.00 feet on and along said South line of said Block 50, to a point having Coordinates of X = 2,654,350.00 and Y = 278,080.00, said point being the Southeast corner of State Lease No. 16393; thence on and along the Eastern, Northern and Western boundaries of said State Lease No. 16393 the following courses and distances, to wit: North 2,000.00 feet to a point having Coordinates of X = 2,654,350.00 and Y = 280,080.00, West 3,800.00 feet to a point having Coordinates of X = 2,650,550.00 and Y = 280,080.00, and South 2,000.00 feet to a point having Coordinates of X = 2,650,550.00 and Y = 278,080.00, said point also being on said South line of said Block 50; thence West 450.00 feet on and along said South line of said Block 50, to the point of beginning, containing approximately **2,054.39 acres**, all as more particularly outlined on a plat on file in the Office of Mineral Resources, Department of Natural Resources. All bearings, distances and coordinates are based on Louisiana Coordinate System of 1927, (North or South Zone), where applicable.

NOTE: The above description of the Tract nominated for lease has been provided and corrected, where required, exclusively by the nomination party. Any mineral lease selected from this Tract and awarded by the Louisiana State Mineral Board shall be without warranty of any kind, either express, implied, or statutory, including, but not limited to, the implied warranties of merchantability and fitness for a particular purpose. Should the mineral lease awarded by the Louisiana State Mineral Board be subsequently modified, cancelled or abrogated due to the existence of conflicting leases, operating agreements, private claims or other future obligations or conditions which may affect all or any portion of the leased Tract, it shall not relieve the Lessee of the obligation to pay any bonus due thereon to the Louisiana State Mineral Board, nor shall the Louisiana State Mineral Board be obligated to refund any consideration paid by the Lessor prior to such modification, cancellation, or abrogation, including, but not limited to, bonuses, rentals and royalties.

NOTE: The State of Louisiana does hereby reserve, and this lease shall be subject to, the imprescriptible right of surface use in the nature of a servitude in favor of the Department of Natural Resources, including its Offices and Commissions, for the sole purpose of implementing, constructing, servicing and maintaining approved coastal zone management and/or restoration projects. Utilization of any and all rights derived under this lease by the mineral lessee, its agents, successors or assigns, shall not interfere with nor hinder the reasonable surface use by the Department of Natural Resources, its Offices or Commissions, as herein above reserved.

Applicant: Robert A. Schroeder, Inc.

Bidder	Cash Payment	Price/Acre	Rental	Oil	Gas	Other



TRACT 36490 - Portion of Blocks 51, and 52, Breton Sound Area, Plaquemines Parish, Louisiana

All of the lands now or formerly constituting the beds and bottoms of all water bodies of every nature and description the title of which vests in the State of Louisiana, together with all islands arising therein and other lands formed by accretion or by reliction, where allowed by law, excepting tax adjudicated lands, and not presently under mineral lease on July 14, 2004, situated in Plaquemines Parish, Louisiana, and more particularly described as follows: Beginning at a point having Coordinates of X = 2,664,850.00 and Y = 278,080.00, said point being the southwest corner of Block 51, Breton Sound Area; Thence North 7,375.00 feet on and along the west line of said Block 51, Breton Sound Area, to a point having Coordinates of X = 2,664,850.00 and Y = 285,455.00; Thence East 4,136.00 feet to a point having Coordinates of X = 2,668,986.00 and Y = 285,455.00, said point being on the western boundary of State of Louisiana State Lease No. 17245; Thence on and along the western, southern and eastern boundaries of said State of Louisiana State Lease No. 17245 the following courses and distances, to wit: South 2,250.00 feet to a point having Coordinates of X = 2,668,986.00 and Y = 283,205.00; West 1,169.00 feet to a point having Coordinates of X = 2,667,817.00 and Y = 283,205.00; South 1,903.00 feet to a point having Coordinates of X = 2,667,817.00 and Y = 281,302.00; East 3,425.00 feet to a point having Coordinates of X = 2,671,242.00 and Y = 281,302.00; North 1,876.00 feet to a point having Coordinates of X = 2,671,242.00 and Y = 283,178.00; East 2,175.00 feet to a point having Coordinates of X = 2,673,417.00 and Y = 283,178.00; and North 39 degrees 23 minutes 04 seconds East 2,946.03 feet to a point having Coordinates of X = 2,675,286.32 and Y = 285,455.00; Thence East 3,668.29 feet to a point having Coordinates of X = 2,678,954.61 and Y = 285,455.00; Thence South 06 degrees 06 minutes 01 seconds East 7,417.00 feet to a point having Coordinates of X = 2,679,742.80 and Y = 278,080.00, said point being on the south line of Block 52, Breton Sound Area; Thence West 142.80 feet on and along said south line of said Block 52, Breton Sound Area, to a point having Coordinates of X = 2,679,600.00 and Y = 278,080.00, said point being the southwest corner of said Block 52, Breton Sound Area, said point also being the southeast corner of said Block 51, Breton Sound Area, said point also being the southeast corner of State of Louisiana State Lease No. 17244; Thence on and along the eastern, northern and western boundaries of said State of Louisiana State Lease No. 17244 the following courses and distances, to wit: North 33 degrees 05 minutes 49 seconds West 1,607.88 feet to a point having Coordinates of X = 2,678,722.00 and Y = 279,427.00, said point being the northeast corner of said State of Louisiana State Lease No. 17244; West 2,053.00 feet to a point having Coordinates of X = 2,676,669.00 and Y = 279,427.00, said point being the northwest corner of said State of Louisiana State Lease No. 17244; and South 1,347.00 feet to a point having Coordinates of X = 2,676,669.00 and Y = 278,080.00, said point being the southwest corner of said State of Louisiana State Lease No. 17244, said point also being on the south line of said Block 51, Breton Sound Area; Thence West 11,819.00 feet on and along said south line of said Block 51, Breton Sound Area, to

the point of beginning, containing approximately **1,948.96 acres**, all as more particularly outlined on a plat on file in the Office of Mineral Resources, Department of Natural Resources. All bearings, distances and coordinates are based on Louisiana Coordinate System of 1927, (North or South Zone), where applicable.

NOTE: The above description of the Tract nominated for lease has been provided and corrected, where required, exclusively by the nomination party. Any mineral lease selected from this Tract and awarded by the Louisiana State Mineral Board shall be without warranty of any kind, either express, implied, or statutory, including, but not limited to, the implied warranties of merchantability and fitness for a particular purpose. Should the mineral lease awarded by the Louisiana State Mineral Board be subsequently modified, cancelled or abrogated due to the existence of conflicting leases, operating agreements, private claims or other future obligations or conditions which may affect all or any portion of the leased Tract, it shall not relieve the Lessee of the obligation to pay any bonus due thereon to the Louisiana State Mineral Board, nor shall the Louisiana State Mineral Board be obligated to refund any consideration paid by the Lessor prior to such modification, cancellation, or abrogation, including, but not limited to, bonuses, rentals and royalties.

NOTE: The State of Louisiana does hereby reserve, and this lease shall be subject to, the imprescriptible right of surface use in the nature of a servitude in favor of the Department of Natural Resources, including its Offices and Commissions, for the sole purpose of implementing, constructing, servicing and maintaining approved coastal zone management and/or restoration projects. Utilization of any and all rights derived under this lease by the mineral lessee, its agents, successors or assigns, shall not interfere with nor hinder the reasonable surface use by the Department of Natural Resources, its Offices or Commissions, as herein above reserved.

Applicant: Robert A. Schroeder, Inc.

Bidder	Cash Payment	Price/Acre	Rental	Oil	Gas	Other

