

TRACT 36471 - Portion of Block 7, Breton Sound Area, St. Bernard Parish, Louisiana

All of the lands now or formerly constituting the beds and bottoms of all water bodies of every nature and description the title of which vests in the State of Louisiana, together with all islands arising therein and other lands formed by accretion or by reliction, where allowed by law, excepting tax adjudicated lands, and not presently under mineral lease on July 14, 2004, situated in St. Bernard Parish, Louisiana, and more particularly described as follows: Beginning at the Northwest corner of Block 7, Breton Sound Area, having Coordinates of X = 2,723,850.00 and Y = 381,330.00; Thence East 14,750.00 feet along the North boundary of said Block 7 to its Northeast corner having Coordinates of X = 2,738,600.00 and Y = 381,330.00; Thence South 7,375.00 feet along East boundary of said Block 7 to a point having Coordinates of X = 2,738,600.00 and Y = 373,955.00; Thence West 14,750.00 feet to a point on the West boundary of said Block 7 having Coordinates of X = 2,723,850.00 and Y = 373,955.00; Thence North 7,375.00 feet along the said West boundary of said Block 7 to the point of beginning, containing approximately **2,497.27 acres**, all as more particularly outlined on a plat on file in the Office of Mineral Resources, Department of Natural Resources. All bearings, distances and coordinates are based on Louisiana Coordinate System of 1927, (North or South Zone), where applicable.

NOTE: The above description of the Tract nominated for lease has been provided and corrected, where required, exclusively by the nomination party. Any mineral lease selected from this Tract and awarded by the Louisiana State Mineral Board shall be without warranty of any kind, either express, implied, or statutory, including, but not limited to, the implied warranties of merchantability and fitness for a particular purpose. Should the mineral lease awarded by the Louisiana State Mineral Board be subsequently modified, cancelled or abrogated due to the existence of conflicting leases, operating agreements, private claims or other future obligations or conditions which may affect all or any portion of the leased Tract, it shall not relieve the Lessee of the obligation to pay any bonus due thereon to the Louisiana State Mineral Board, nor shall the Louisiana State Mineral Board be obligated to refund any consideration paid by the Lessor prior to such modification, cancellation, or abrogation, including, but not limited to, bonuses, rentals and royalties.

NOTE: The Office of Mineral Resources will require a minimum bonus of \$190 per acre and a minimum royalty of 22%.

NOTE: The State of Louisiana does hereby reserve, and this lease shall be subject to, the imprescriptible right of surface use in the nature of a servitude in favor of the Department of Natural Resources, including its Offices and Commissions, for the sole purpose of implementing, constructing, servicing and maintaining approved coastal zone management and/or restoration projects. Utilization of any and all rights derived under this lease by the mineral lessee, its agents, successors or assigns,

shall not interfere with nor hinder the reasonable surface use by the Department of Natural Resources, its Offices or Commissions, as herein above reserved.

Applicant: Oil And Gas Resources, Inc.

Bidder	Cash Payment	Price/Acre	Rental	Oil	Gas	Other



ST BERNARD PARISH

BLOCK CS0062

BLOCK BS0008



BLOCK CS0063

BLOCK BS0007

CHANDELEUR SOUND AREA

BRETON SOUND AREA

BLOCK CS0064

BLOCK BS0006

P.O.B.
X=2,723,850.00
Y=381,330.00

TRACT 36472 - Portion of Block 6, Breton Sound Area, St. Bernard Parish, Louisiana

All of the lands now or formerly constituting the beds and bottoms of all water bodies of every nature and description the title of which vests in the State of Louisiana, together with all islands arising therein and other lands formed by accretion or by reliction, where allowed by law, excepting tax adjudicated lands, and not presently under mineral lease on July 14, 2004, situated in St. Bernard Parish, Louisiana, and more particularly described as follows: Beginning at the Southeast corner of Block 6, Breton Sound Area, having Coordinates of X = 2,723,850.00 and Y = 366,580.00; Thence West 14,750.00 feet along the South boundary of said Block 6 to its Southwest corner having Coordinates of X = 2,709,100.00 and Y = 366,580.00; Thence North 7,375.00 feet along the West boundary of said Block 6 to a point having Coordinates of X = 2,709,100.00 and Y = 373,955.00; Thence East 14,750.00 feet to a point on the East boundary of said Block 6 having Coordinates of X = 2,723,850.00 and Y = 373,955.00; Thence South 7,375.00 feet along the said East boundary of said Block 6 to the point of beginning, containing approximately **2,497.27 acres**, all as more particularly outlined on a plat on file in the Office of Mineral Resources, Department of Natural Resources. All bearings, distances and coordinates are based on Louisiana Coordinate System of 1927, (North or South Zone), where applicable.

NOTE: The above description of the Tract nominated for lease has been provided and corrected, where required, exclusively by the nomination party. Any mineral lease selected from this Tract and awarded by the Louisiana State Mineral Board shall be without warranty of any kind, either express, implied, or statutory, including, but not limited to, the implied warranties of merchantability and fitness for a particular purpose. Should the mineral lease awarded by the Louisiana State Mineral Board be subsequently modified, cancelled or abrogated due to the existence of conflicting leases, operating agreements, private claims or other future obligations or conditions which may affect all or any portion of the leased Tract, it shall not relieve the Lessee of the obligation to pay any bonus due thereon to the Louisiana State Mineral Board, nor shall the Louisiana State Mineral Board be obligated to refund any consideration paid by the Lessor prior to such modification, cancellation, or abrogation, including, but not limited to, bonuses, rentals and royalties.

NOTE: The Office of Mineral Resources will require a minimum bonus of \$190 per acre and a minimum royalty of 22%.

NOTE: The State of Louisiana does hereby reserve, and this lease shall be subject to, the imprescriptible right of surface use in the nature of a servitude in favor of the Department of Natural Resources, including its Offices and Commissions, for the sole purpose of implementing, constructing, servicing and maintaining approved coastal zone management and/or restoration projects. Utilization of any and all rights derived under this lease by the mineral lessee, its agents, successors or assigns,

shall not interfere with nor hinder the reasonable surface use by the Department of Natural Resources, its Offices or Commissions, as herein above reserved.

Applicant: Oil And Gas Resources, Inc.

Bidder	Cash Payment	Price/Acre	Rental	Oil	Gas	Other



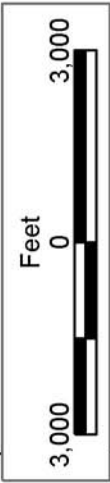
ST BERNARD PARISH

BLOCK BS0007

P.O.B.
X=2,723,850.00
Y=366,580.00

BLOCK BS0010

PLAQUEMINES PARISH



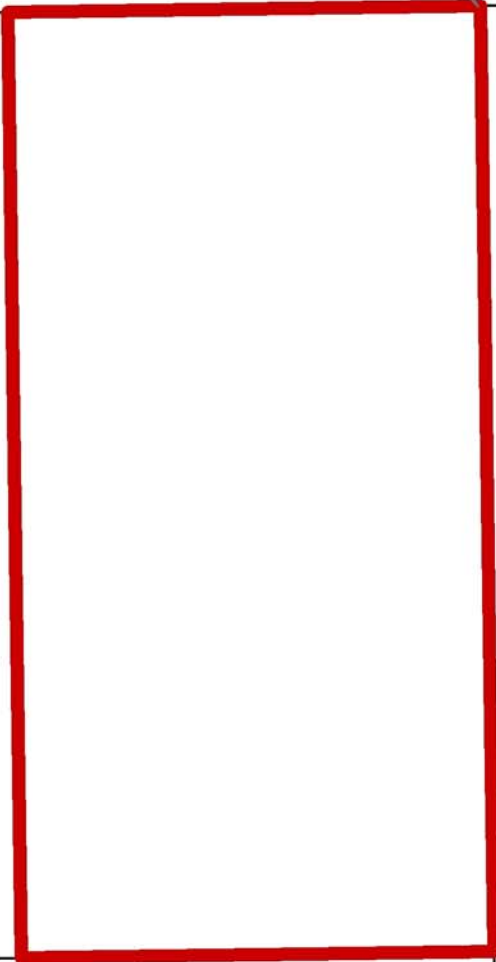
BLOCK BS0006

BLOCK BS0011

BRETON SOUND AREA

BLOCK BS0005

BLOCK BS0012



TRACT 36473 - Portion of Block 7, Breton Sound Area, St. Bernard Parish, Louisiana

All of the lands now or formerly constituting the beds and bottoms of all water bodies of every nature and description the title of which vests in the State of Louisiana, together with all islands arising therein and other lands formed by accretion or by reliction, where allowed by law, excepting tax adjudicated lands, and not presently under mineral lease on July 14, 2004, situated in St. Bernard Parish, Louisiana, and more particularly described as follows: Beginning at the Southwest corner of Block 7, Breton Sound Area, having Coordinates of X = 2,723,850.00 and Y = 366,580.00; Thence North 7,375.00 feet along the West boundary of said Block 7 to a point having Coordinates of X = 2,723,850.00 and Y = 373,955.00; Thence East 14,750.00 feet to a point on the East boundary of said Block 7 having Coordinates of X = 2,738,600.00 and Y = 373,955.00; Thence South 7,375.00 feet along the said East boundary of said Block 7 to its Southeast corner having Coordinates of X = 2,738,600.00 and Y = 366,580.00; Thence West 14,750.00 feet along the South boundary of said Block 7 to the point of beginning, containing approximately **2,497.27 acres**, all as more particularly outlined on a plat on file in the Office of Mineral Resources, Department of Natural Resources. All bearings, distances and coordinates are based on Louisiana Coordinate System of 1927, (North or South Zone), where applicable.

NOTE: The above description of the Tract nominated for lease has been provided and corrected, where required, exclusively by the nomination party. Any mineral lease selected from this Tract and awarded by the Louisiana State Mineral Board shall be without warranty of any kind, either express, implied, or statutory, including, but not limited to, the implied warranties of merchantability and fitness for a particular purpose. Should the mineral lease awarded by the Louisiana State Mineral Board be subsequently modified, cancelled or abrogated due to the existence of conflicting leases, operating agreements, private claims or other future obligations or conditions which may affect all or any portion of the leased Tract, it shall not relieve the Lessee of the obligation to pay any bonus due thereon to the Louisiana State Mineral Board, nor shall the Louisiana State Mineral Board be obligated to refund any consideration paid by the Lessor prior to such modification, cancellation, or abrogation, including, but not limited to, bonuses, rentals and royalties.

NOTE: The Office of Mineral Resources will require a minimum bonus of \$190 per acre and a minimum royalty of 22%.

NOTE: The State of Louisiana does hereby reserve, and this lease shall be subject to, the imprescriptible right of surface use in the nature of a servitude in favor of the Department of Natural Resources, including its Offices and Commissions, for the sole purpose of implementing, constructing, servicing and maintaining approved coastal zone management and/or restoration projects. Utilization of any and all rights derived under this lease by the mineral lessee, its agents, successors or assigns,

shall not interfere with nor hinder the reasonable surface use by the Department of Natural Resources, its Offices or Commissions, as herein above reserved.

Applicant: Oil And Gas Resources, Inc.

Bidder	Cash Payment	Price/Acre	Rental	Oil	Gas	Other



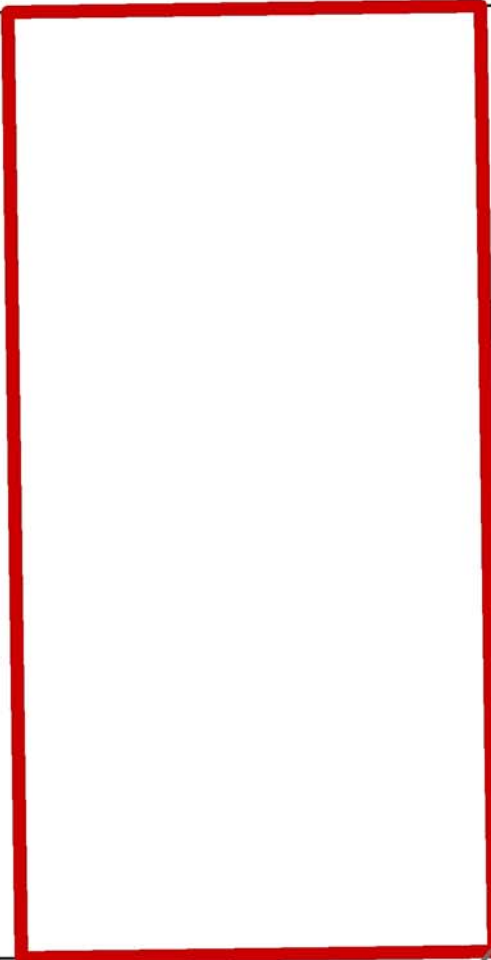
ST BERNARD PARISH

BLOCK BS0008

BLOCK BS0007

BRETON SOUND AREA

BLOCK BS0006



P.O.B.
X=2,723,850.00
Y=366,580.00

BLOCK BS0009

PLAQUEMINES PARISH

BLOCK BS0010

BLOCK BS0011



TRACT 36474 - Portion of Block 8, Breton Sound Area, St. Bernard Parish, Louisiana

All of the lands now or formerly constituting the beds and bottoms of all water bodies of every nature and description the title of which vests in the State of Louisiana, together with all islands arising therein and other lands formed by accretion or by reliction, where allowed by law, excepting tax adjudicated lands, and not presently under mineral lease on July 14, 2004, situated in St. Bernard Parish, Louisiana, and more particularly described as follows: Beginning at a point on the West boundary of Block 8, Breton Sound Area, having Coordinates of X = 2,738,600.00 and Y = 373,955.00; Thence East 14,750.00 feet to a point on the East boundary of said Block 8 having Coordinates of X = 2,753,350.00 and Y = 373,955.00; Thence South 7,375.00 feet along the said East boundary of said Block 8 to its Southeast corner having Coordinates of X = 2,753,350.00 and Y = 366,580.00; Thence West 14,750.00 feet along the South boundary of said Block 8 to its Southwest corner having Coordinates of X = 2,738,600.00 and Y = 366,580.00; Thence North 7,375.00 feet along the West boundary of said Block 8 to the point of beginning, containing approximately **2,497.27 acres**, all as more particularly outlined on a plat on file in the Office of Mineral Resources, Department of Natural Resources. All bearings, distances and coordinates are based on Louisiana Coordinate System of 1927, (North or South Zone), where applicable.

NOTE: The above description of the Tract nominated for lease has been provided and corrected, where required, exclusively by the nomination party. Any mineral lease selected from this Tract and awarded by the Louisiana State Mineral Board shall be without warranty of any kind, either express, implied, or statutory, including, but not limited to, the implied warranties of merchantability and fitness for a particular purpose. Should the mineral lease awarded by the Louisiana State Mineral Board be subsequently modified, cancelled or abrogated due to the existence of conflicting leases, operating agreements, private claims or other future obligations or conditions which may affect all or any portion of the leased Tract, it shall not relieve the Lessee of the obligation to pay any bonus due thereon to the Louisiana State Mineral Board, nor shall the Louisiana State Mineral Board be obligated to refund any consideration paid by the Lessor prior to such modification, cancellation, or abrogation, including, but not limited to, bonuses, rentals and royalties.

NOTE: The Office of Mineral Resources will require a minimum bonus of \$190 per acre and a minimum royalty of 22%.

NOTE: The State of Louisiana does hereby reserve, and this lease shall be subject to, the imprescriptible right of surface use in the nature of a servitude in favor of the Department of Natural Resources, including its Offices and Commissions, for the sole purpose of implementing, constructing, servicing and maintaining approved coastal zone management and/or restoration projects. Utilization of any and all rights derived under this lease by the mineral lessee, its agents, successors or assigns,

shall not interfere with nor hinder the reasonable surface use by the Department of Natural Resources, its Offices or Commissions, as herein above reserved.

Applicant: Oil And Gas Resources, Inc.

Bidder	Cash Payment	Price/Acre	Rental	Oil	Gas	Other



BLOCK MP0005

BLOCK MP0008

ST BERNARD PARISH

PLAQUEMINES PARISH



BLOCK BS0008

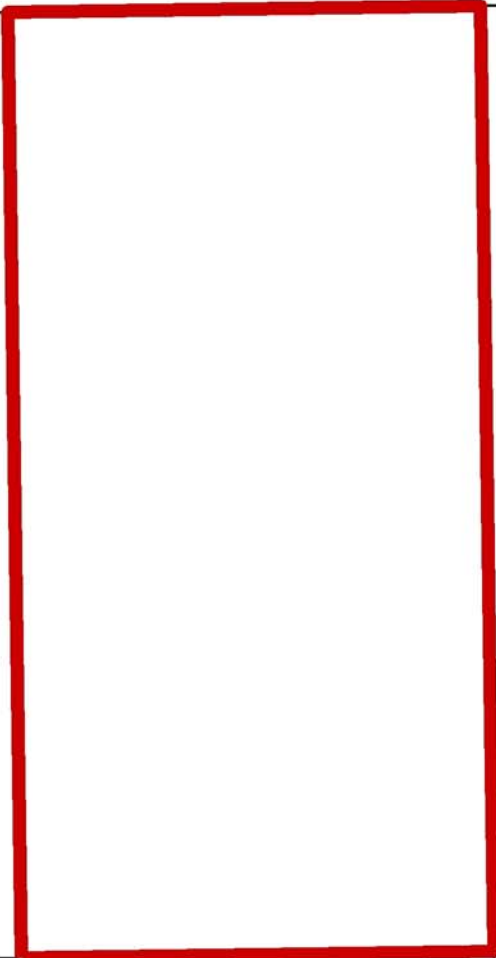
BLOCK BS0009

BRETON SOUND AREA

BLOCK BS0007

BLOCK BS0010

P.O.B.
X=2,738,600.00
Y=373,955.00



Coastline

TRACT 36475 - Portion of Block 10, Breton Sound Area, Plaquemines and St. Bernard Parishes, Louisiana

All of the lands now or formerly constituting the beds and bottoms of all water bodies of every nature and description the title of which vests in the State of Louisiana, together with all islands arising therein and other lands formed by accretion or by reliction, where allowed by law, excepting tax adjudicated lands, and not presently under mineral lease on July 14, 2004, situated in Plaquemines and St. Bernard Parishes, Louisiana, and more particularly described as follows: Beginning at the Northwest corner of Block 10, Breton Sound Area, having Coordinates of X = 2,723,850.00 and Y = 366,580.00; Thence East 14,750.00 feet along the North boundary of said Block 10 to its Northeast corner having Coordinates of X = 2,738,600.00 and Y = 366,580.00; Thence South 7,375.00 feet along the East boundary of said Block 10 to a point having Coordinates of X = 2,738,600.00 and Y = 359,205.00; Thence West 14,750.00 feet to a point on the West boundary of said Block 10 having Coordinates of X = 2,723,850.00 and Y = 359,205.00; Thence North 7,375.00 feet along the said West boundary of said Block 10 to the point of beginning, containing approximately **2,497.27 acres**, all as more particularly outlined on a plat on file in the Office of Mineral Resources, Department of Natural Resources. All bearings, distances and coordinates are based on Louisiana Coordinate System of 1927, (North or South Zone), where applicable.

NOTE: The above description of the Tract nominated for lease has been provided and corrected, where required, exclusively by the nomination party. Any mineral lease selected from this Tract and awarded by the Louisiana State Mineral Board shall be without warranty of any kind, either express, implied, or statutory, including, but not limited to, the implied warranties of merchantability and fitness for a particular purpose. Should the mineral lease awarded by the Louisiana State Mineral Board be subsequently modified, cancelled or abrogated due to the existence of conflicting leases, operating agreements, private claims or other future obligations or conditions which may affect all or any portion of the leased Tract, it shall not relieve the Lessee of the obligation to pay any bonus due thereon to the Louisiana State Mineral Board, nor shall the Louisiana State Mineral Board be obligated to refund any consideration paid by the Lessor prior to such modification, cancellation, or abrogation, including, but not limited to, bonuses, rentals and royalties.

NOTE: The State of Louisiana does hereby reserve, and this lease shall be subject to, the imprescriptible right of surface use in the nature of a servitude in favor of the Department of Natural Resources, including its Offices and Commissions, for the sole purpose of implementing, constructing, servicing and maintaining approved coastal zone management and/or restoration projects. Utilization of any and all rights derived under this lease by the mineral lessee, its agents, successors or assigns, shall not interfere with nor hinder the reasonable surface use by the Department of Natural Resources, its Offices or Commissions, as herein above reserved.

Applicant: Oil And Gas Resources, Inc.

Bidder	Cash Payment	Price/Acre	Rental	Oil	Gas	Other



BLOCK BS0007

ST BERNARD PARISH

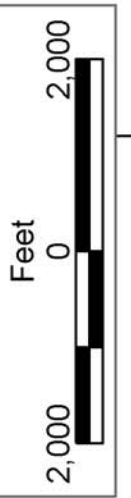
BLOCK BS0010

BRETON SOUND AREA

PLAQUEMINES PARISH

P.O.B.
X=2,723,850.00
Y=366,580.00

SL 8191



TRACT 36476 - Portion of Block 9, Breton Sound Area, Plaquemines and St. Bernard Parishes, Louisiana

All of the lands now or formerly constituting the beds and bottoms of all water bodies of every nature and description the title of which vests in the State of Louisiana, together with all islands arising therein and other lands formed by accretion or by reliction, where allowed by law, excepting tax adjudicated lands, and not presently under mineral lease on July 14, 2004, situated in Plaquemines and St. Bernard Parishes, Louisiana, and more particularly described as follows: Beginning at a point on the North boundary of Block 9, Breton Sound Area, having Coordinates of X = 2,746,309.00 and Y = 366,580.00; Thence South 11,142.00 feet to a point on the Coastline as defined by the report of the Special Master and set forth in the judgment decree in June of 1975 by the Supreme Court of the United States in the litigation styled United States v. State of Louisiana, et al No. 9 Original, having Coordinates of X = 2,746,309 and Y = 355,438; Thence along the said Coastline the following courses: Southwesterly to a point having Coordinates of X = 2,744,222 and Y = 354,125; Southwesterly to a point having Coordinates of X = 2,743,352 and Y = 353,794; Southwesterly to a point having Coordinates of X = 2,742,583 and Y = 353,754; Southwesterly to a point on the South boundary of said Block 9 having Coordinates of X = 2,741,119.96 and Y = 351,830.00; Thence West 2,519.96 feet along the said South boundary of said Block 9 to its Southwest corner having Coordinates of X = 2,738,600.00 and Y = 351,830.00; Thence North 14,750.00 feet along the West boundary of said Block 9 to its Northwest corner having Coordinates of X = 2,738,600.00 and Y = 366,580.00; Thence East 7,709.00 feet along the North boundary of said Block 9 to the point of beginning, containing approximately **2,359.80 acres**, all as more particularly outlined on a plat on file in the Office of Mineral Resources, Department of Natural Resources. All bearings, distances and coordinates are based on Louisiana Coordinate System of 1927, (North or South Zone), where applicable.

NOTE: The above description of the Tract nominated for lease has been provided and corrected, where required, exclusively by the nomination party. Any mineral lease selected from this Tract and awarded by the Louisiana State Mineral Board shall be without warranty of any kind, either express, implied, or statutory, including, but not limited to, the implied warranties of merchantability and fitness for a particular purpose. Should the mineral lease awarded by the Louisiana State Mineral Board be subsequently modified, cancelled or abrogated due to the existence of conflicting leases, operating agreements, private claims or other future obligations or conditions which may affect all or any portion of the leased Tract, it shall not relieve the Lessee of the obligation to pay any bonus due thereon to the Louisiana State Mineral Board, nor shall the Louisiana State Mineral Board be obligated to refund any consideration paid by the Lessor prior to such modification, cancellation, or abrogation, including, but not limited to, bonuses, rentals and royalties.

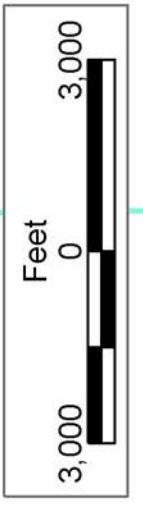
NOTE: The State of Louisiana does hereby reserve, and this lease shall be subject to, the imprescriptible right of surface use in the nature of a servitude in favor of the Department of Natural Resources, including its Offices and Commissions, for the sole purpose of implementing, constructing, servicing and maintaining approved coastal zone management and/or restoration projects. Utilization of any and all rights derived under this lease by the mineral lessee, its agents, successors or assigns, shall not interfere with nor hinder the reasonable surface use by the Department of Natural Resources, its Offices or Commissions, as herein above reserved.

Applicant: Oil And Gas Resources, Inc.

Bidder	Cash Payment	Price/Acre	Rental	Oil	Gas	Other



MAIN PASS
AREA, REVISED



P.O.B.
X=2,746,309.00
Y=366,580.00

BLOCK BS0008

BLOCK BS0009

ST BERNARD PARISH

PLAQUEMINES PARISH

BRETON SOUND AREA

TRACT 36477 - Portion of Block 9, Breton Sound Area, Plaquemines and St. Bernard Parishes, Louisiana

All of the lands now or formerly constituting the beds and bottoms of all water bodies of every nature and description the title of which vests in the State of Louisiana, together with all islands arising therein and other lands formed by accretion or by reliction, where allowed by law, excepting tax adjudicated lands, and not presently under mineral lease on July 14, 2004, situated in Plaquemines and St. Bernard Parishes, Louisiana, and more particularly described as follows: Beginning at a point on the North boundary of Block 9, Breton Sound Area, having Coordinates of X = 2,746,309.00 and Y = 366,580.00; Thence East 7,041.00 feet along the said North boundary of said Block 9 to its Northeast corner having Coordinates of X = 2,753,350.00 and Y = 366,580.00; Thence South 4,733.10 feet along the East boundary of said Block 9 to a point on the Coastline as defined by the report of the Special Master and set forth in the judgment decree in June of 1975 by the Supreme Court of the United States in the litigation styled United States v. State of Louisiana, et al No. 9 Original, having Coordinates of X = 2,753,350.00 and Y = 361,846.90; Thence along the said Coastline the following courses: Southwesterly to a point having Coordinates of X = 2,749,221 and Y = 357,797; Southwesterly to a point having Coordinates of X = 2,746,309 and Y = 355,438; Thence North 11,142.00 feet to the point of beginning, containing approximately **1,306.58 acres**, all as more particularly outlined on a plat on file in the Office of Mineral Resources, Department of Natural Resources. All bearings, distances and coordinates are based on Louisiana Coordinate System of 1927, (North or South Zone), where applicable.

NOTE: The above description of the Tract nominated for lease has been provided and corrected, where required, exclusively by the nomination party. Any mineral lease selected from this Tract and awarded by the Louisiana State Mineral Board shall be without warranty of any kind, either express, implied, or statutory, including, but not limited to, the implied warranties of merchantability and fitness for a particular purpose. Should the mineral lease awarded by the Louisiana State Mineral Board be subsequently modified, cancelled or abrogated due to the existence of conflicting leases, operating agreements, private claims or other future obligations or conditions which may affect all or any portion of the leased Tract, it shall not relieve the Lessee of the obligation to pay any bonus due thereon to the Louisiana State Mineral Board, nor shall the Louisiana State Mineral Board be obligated to refund any consideration paid by the Lessor prior to such modification, cancellation, or abrogation, including, but not limited to, bonuses, rentals and royalties.

NOTE: The State of Louisiana does hereby reserve, and this lease shall be subject to, the imprescriptible right of surface use in the nature of a servitude in favor of the Department of Natural Resources, including its Offices and Commissions, for the sole purpose of implementing, constructing, servicing and maintaining approved coastal zone management and/or restoration projects. Utilization of any and all rights derived

under this lease by the mineral lessee, its agents, successors or assigns, shall not interfere with nor hinder the reasonable surface use by the Department of Natural Resources, its Offices or Commissions, as herein above reserved.

Applicant: Oil And Gas Resources, Inc.

Bidder	Cash Payment	Price/Acre	Rental	Oil	Gas	Other



BLOCK BS0008

P.O.B.
X=2,746,309.00
Y=366,580.00

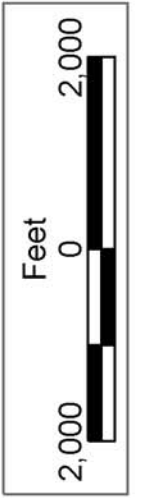
ST BERNARD PARISH

PLAQUEMINES PARISH

BLOCK BS0009

BRETON SOUND AREA

MAIN PASS
AREA, REVISED



TRACT 36478 - Portion of Block 10, Breton Sound Area, Plaquemines Parish, Louisiana

All of the lands now or formerly constituting the beds and bottoms of all water bodies of every nature and description the title of which vests in the State of Louisiana, together with all islands arising therein and other lands formed by accretion or by reliction, where allowed by law, excepting tax adjudicated lands, and not presently under mineral lease on July 14, 2004, situated in Plaquemines Parish, Louisiana, and more particularly described as follows: Beginning at the Southwest corner of Block 10, Breton Sound Area having Coordinates of X = 2,723,850.00 and Y = 351,830.00; Thence North 7,375.00 feet along the West boundary of said Block 10 to a point having Coordinates of X = 2,723,850.00 and Y = 359,205.00; Thence East 14,750.00 feet to a point on the East boundary of said Block 10 having Coordinates of X = 2,738,600.00 and Y = 359,205.00; Thence South 7,375.00 feet along the said East boundary of Block 10 to its Southeast corner having Coordinates of X = 2,738,600.00 and Y = 351,830.00; Thence West 14,750.00 feet along the South boundary of said Block 10 to the point of beginning, containing approximately **2,497.27 acres**, all as more particularly outlined on a plat on file in the Office of Mineral Resources, Department of Natural Resources. All bearings, distances and coordinates are based on Louisiana Coordinate System of 1927, (North or South Zone), where applicable.

NOTE: The above description of the Tract nominated for lease has been provided and corrected, where required, exclusively by the nomination party. Any mineral lease selected from this Tract and awarded by the Louisiana State Mineral Board shall be without warranty of any kind, either express, implied, or statutory, including, but not limited to, the implied warranties of merchantability and fitness for a particular purpose. Should the mineral lease awarded by the Louisiana State Mineral Board be subsequently modified, cancelled or abrogated due to the existence of conflicting leases, operating agreements, private claims or other future obligations or conditions which may affect all or any portion of the leased Tract, it shall not relieve the Lessee of the obligation to pay any bonus due thereon to the Louisiana State Mineral Board, nor shall the Louisiana State Mineral Board be obligated to refund any consideration paid by the Lessor prior to such modification, cancellation, or abrogation, including, but not limited to, bonuses, rentals and royalties.

NOTE: The State of Louisiana does hereby reserve, and this lease shall be subject to, the imprescriptible right of surface use in the nature of a servitude in favor of the Department of Natural Resources, including its Offices and Commissions, for the sole purpose of implementing, constructing, servicing and maintaining approved coastal zone management and/or restoration projects. Utilization of any and all rights derived under this lease by the mineral lessee, its agents, successors or assigns, shall not interfere with nor hinder the reasonable surface use by the Department of Natural Resources, its Offices or Commissions, as herein above reserved.

Applicant: Oil And Gas Resources, Inc.

Bidder	Cash Payment	Price/Acre	Rental	Oil	Gas	Other



BRETON SOUND AREA

PLAQUEMINES PARISH

BLOCK BS0010

BLOCK BS0023

P.O.B.
X=2,723,850.00
Y=351,830.00

SL 8191

SL 2326



TRACT 36479 - Portion of Blocks 23, and 24, Breton Sound Area, Plaquemines Parish, Louisiana

All of the lands now or formerly constituting the beds and bottoms of all water bodies of every nature and description the title of which vests in the State of Louisiana, together with all islands arising therein and other lands formed by accretion or by reliction, where allowed by law, excepting tax adjudicated lands, and not presently under mineral lease on July 14, 2004, situated in Plaquemines Parish, Louisiana, and more particularly described as follows: Beginning at Northwest corner of Block 23, Breton Sound Area, having Coordinates of X = 2,723,850.00 and Y = 351,830.00; Thence East 14,750.00 feet along the North boundary of said Block 23 to its Northeast corner, also being the Northwest corner of Block 24, Breton Sound Area, having Coordinates of X = 2,738,600.00 and Y = 351,830.00; Thence East 2,519.96 feet along the North boundary of said Block 24 to a point on the Coastline as defined by the report of the Special Master and set forth in the judgment decree in June of 1975 by the Supreme Court of the United States in the litigation styled United States v. State of Louisiana, et al No. 9 Original, having Coordinates of X = 2,741,119.96 and Y = 351,830.00; Thence along the said Coastline the following courses: Southwesterly to a point on the West boundary of said Block 24 having Coordinates of X = 2,738,600.00 and Y = 348,516.07; Southwesterly to the Northeast corner of State Lease No. 16273, as amended, also being the Northwest corner of State Lease No. 16258, as amended, having Coordinates of X = 2,735,521.63 and Y = 344,467.81; Thence North 70 degrees 40 minutes 53 seconds West 5,854.85 feet along the North boundary of said State Lease No. 16273, to its Northwest corner, also being the Northeast corner of State Lease No. 16272, as amended, having Coordinates of X = 2,729,996.44 and Y = 346,404.71; Thence along the Northern, Western and Southern boundaries of said State Lease No. 16272, the following courses: North 70 degrees 40 minutes 53 seconds West 2,084.62 feet to its Northwest corner having Coordinates of X = 2,728,029.20 and Y = 347,094.34; South 1,793.63 feet to its Southwest corner having Coordinates of X = 2,728,029.20 and Y = 345,300.71; South 46 degrees 03 minutes 10 seconds East 1,218.61 feet to a point on its South boundary having Coordinates of X = 2,728,906.57 and Y = 344,455.00; Thence West 5,056.57 feet to a point on the West boundary of said Block 23 having Coordinates of X = 2,723,850.00 and Y = 344,455.00; Thence North 7,375.00 feet along the said West boundary of Block 23 to the point of beginning, containing approximately **2,229.61 acres**, all as more particularly outlined on a plat on file in the Office of Mineral Resources, Department of Natural Resources. All bearings, distances and coordinates are based on Louisiana Coordinate System of 1927, (North or South Zone), where applicable.

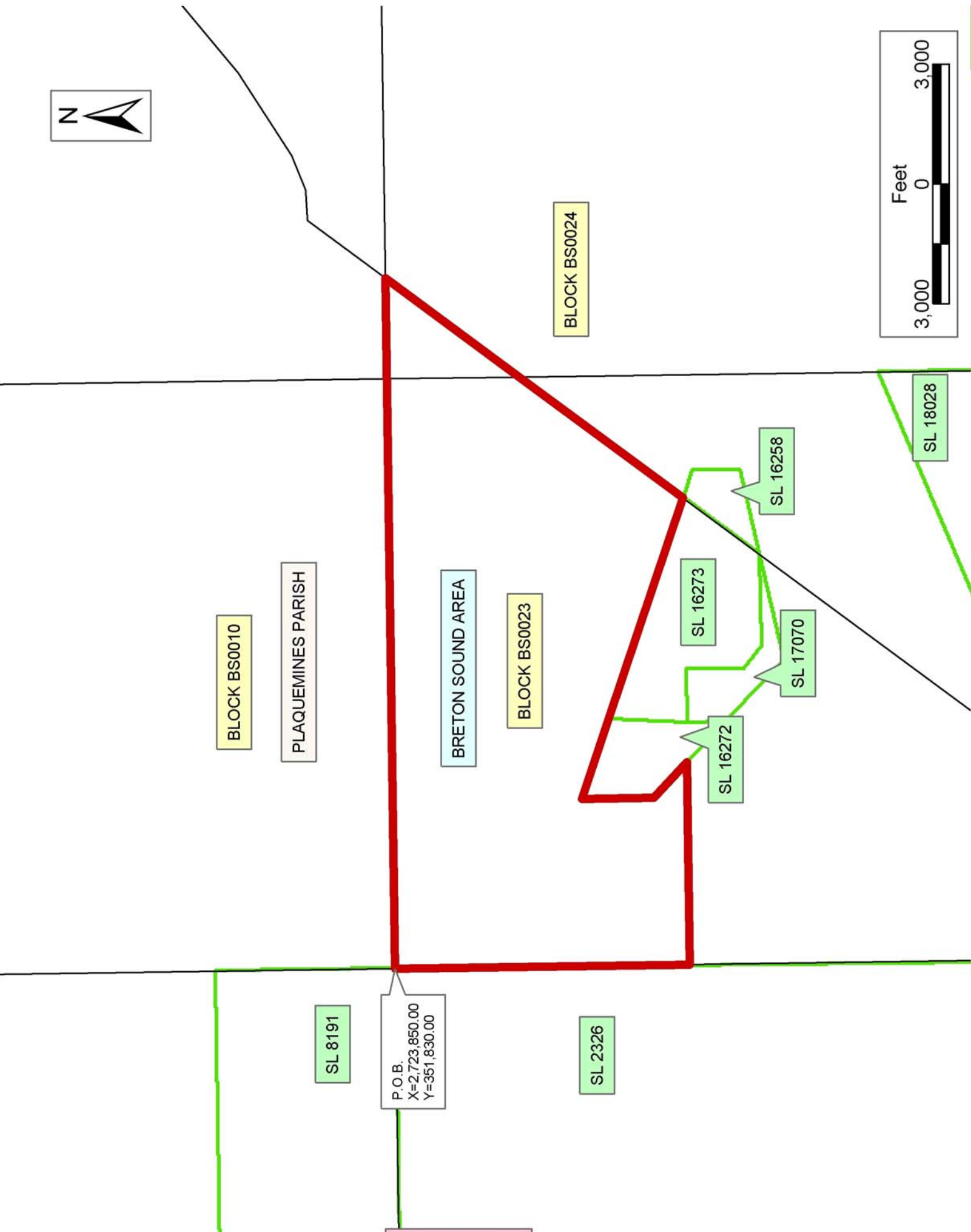
NOTE: The above description of the Tract nominated for lease has been provided and corrected, where required, exclusively by the nomination party. Any mineral lease selected from this Tract and awarded by the Louisiana State Mineral Board shall be without warranty of any kind, either express, implied, or statutory, including, but not limited to, the

implied warranties of merchantability and fitness for a particular purpose. Should the mineral lease awarded by the Louisiana State Mineral Board be subsequently modified, cancelled or abrogated due to the existence of conflicting leases, operating agreements, private claims or other future obligations or conditions which may affect all or any portion of the leased Tract, it shall not relieve the Lessee of the obligation to pay any bonus due thereon to the Louisiana State Mineral Board, nor shall the Louisiana State Mineral Board be obligated to refund any consideration paid by the Lessor prior to such modification, cancellation, or abrogation, including, but not limited to, bonuses, rentals and royalties.

NOTE: The State of Louisiana does hereby reserve, and this lease shall be subject to, the imprescriptible right of surface use in the nature of a servitude in favor of the Department of Natural Resources, including its Offices and Commissions, for the sole purpose of implementing, constructing, servicing and maintaining approved coastal zone management and/or restoration projects. Utilization of any and all rights derived under this lease by the mineral lessee, its agents, successors or assigns, shall not interfere with nor hinder the reasonable surface use by the Department of Natural Resources, its Offices or Commissions, as herein above reserved.

Applicant: Oil And Gas Resources, Inc.

Bidder	Cash Payment	Price/Acre	Rental	Oil	Gas	Other



TRACT 36480 - Portion of Blocks 23, and 26, Breton Sound Area, Plaquemines Parish, Louisiana

All of the lands now or formerly constituting the beds and bottoms of all water bodies of every nature and description the title of which vests in the State of Louisiana, together with all islands arising therein and other lands formed by accretion or by reliction, where allowed by law, excepting tax adjudicated lands, and not presently under mineral lease on July 14, 2004, situated in Plaquemines Parish, Louisiana, and more particularly described as follows: Beginning at a point on the West boundary of Block 23, Breton Sound Area, having Coordinates of X = 2,723,850.00 and Y = 344,455.00; Thence East 5,056.57 feet to a point on the Southwestern boundary of State Lease No. 16272, as amended, having Coordinates of X = 2,728,906.57 and Y = 344,455.00; Thence South 46 degrees 03 minutes 10 seconds East 1,385.12 feet along the said Southwestern boundary of said State Lease No. 16272, to its Southeast corner, also being the most Westerly Southwest corner of State Lease No. 17070, as amended, having Coordinates of X = 2,729,903.83 and Y = 343,493.73; Thence South 46 degrees 03 minutes 00 seconds East 2,109.03 feet along the Southwestern boundary of said State Lease No. 17070, to its most Southerly corner having Coordinates of X = 2,731,422.22 and Y = 342,030.00; Thence East 76.17 feet along the South boundary of said State Lease No. 17070, to a corner having Coordinates of X = 2,731,498.39 and Y = 342,030.00; Thence North 78 degrees 00 minutes 14 seconds East 2,645.36 feet along the South boundary of said State Lease No. 17070, to its Southeast corner on the Coastline as defined by the report of the Special Master and set forth in the judgment decree in June of 1975 by the Supreme Court of the United States in the litigation styled United States v. State of Louisiana, et al No. 9 Original, having Coordinates of X = 2,734,085.98 and Y = 342,579.82; Thence along the said Coastline the following courses: Southwesterly to a point on the South boundary of said Block 23, also being a point on the North boundary of Block 26, Breton Sound Area, having Coordinates of X = 2,729,903.83 and Y = 337,080.00; Southwesterly to a point having Coordinates of X = 2,727,653 and Y = 334,120; Southwesterly to a point having Coordinates of X = 2,726,852 and Y = 333,103; Southwesterly to a point having Coordinates of X = 2,723,975 and Y = 330,868; Southwesterly to a point on the West boundary of Block 26 having Coordinates of X = 2,723,850.00 and Y = 330,739.83; Thence North 6,340.17 feet along the said West boundary of said Block 26 to its Northwest corner, also being the Southwest corner of said Block 23, having Coordinates of X = 2,723,850.00 and Y = 337,080.00; Thence North 7,375.00 feet along the West boundary of said Block 23 to the point of beginning, containing approximately **1,761.76 acres**, all as more particularly outlined on a plat on file in the Office of Mineral Resources, Department of Natural Resources. All bearings, distances and coordinates are based on Louisiana Coordinate System of 1927, (North or South Zone), where applicable.

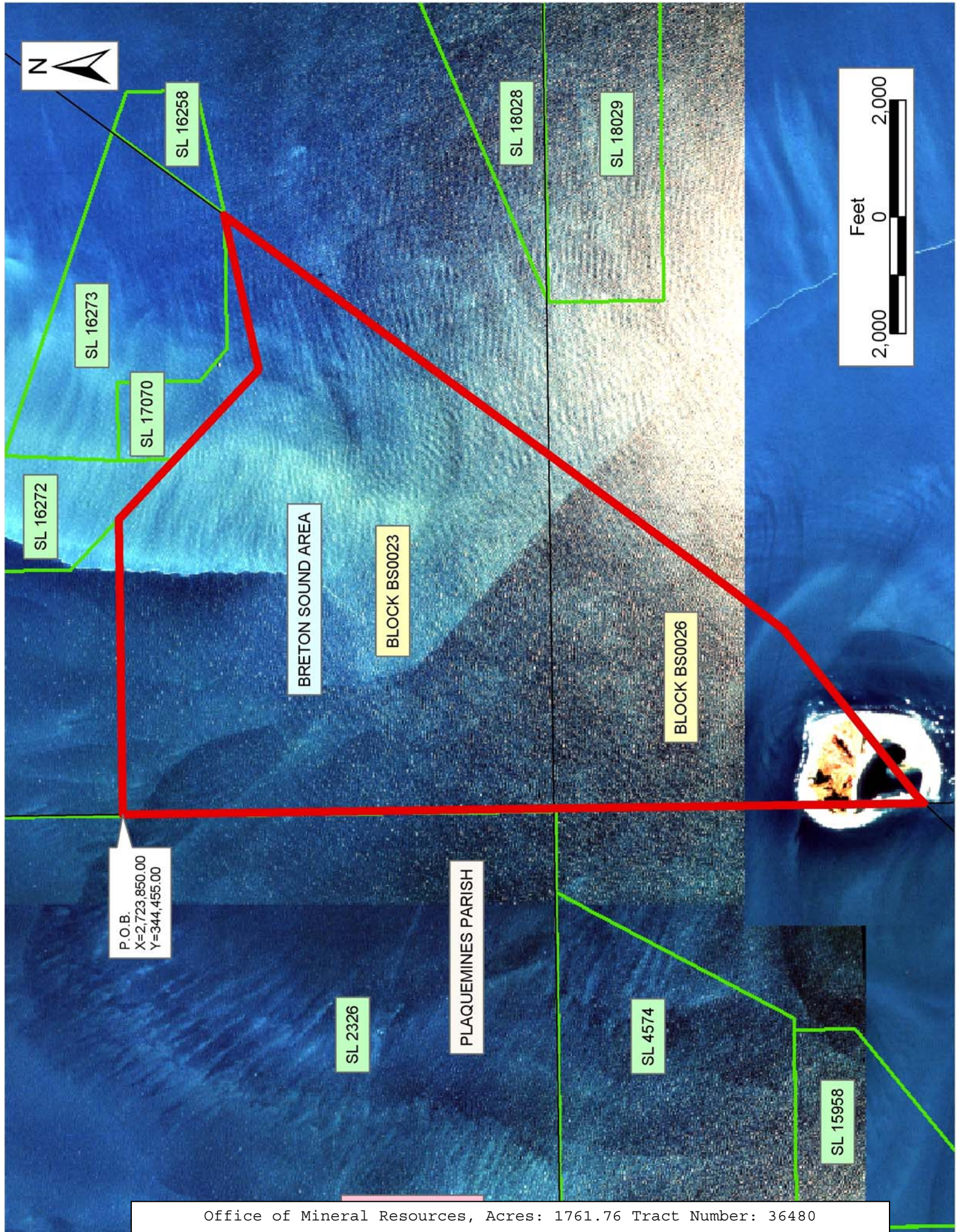
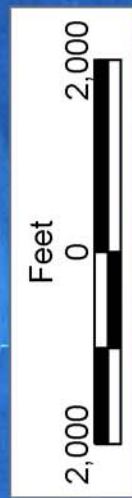
NOTE: The above description of the Tract nominated for lease has been provided and corrected, where required, exclusively by the nomination

party. Any mineral lease selected from this Tract and awarded by the Louisiana State Mineral Board shall be without warranty of any kind, either express, implied, or statutory, including, but not limited to, the implied warranties of merchantability and fitness for a particular purpose. Should the mineral lease awarded by the Louisiana State Mineral Board be subsequently modified, cancelled or abrogated due to the existence of conflicting leases, operating agreements, private claims or other future obligations or conditions which may affect all or any portion of the leased Tract, it shall not relieve the Lessee of the obligation to pay any bonus due thereon to the Louisiana State Mineral Board, nor shall the Louisiana State Mineral Board be obligated to refund any consideration paid by the Lessor prior to such modification, cancellation, or abrogation, including, but not limited to, bonuses, rentals and royalties.

NOTE: The State of Louisiana does hereby reserve, and this lease shall be subject to, the imprescriptible right of surface use in the nature of a servitude in favor of the Department of Natural Resources, including its Offices and Commissions, for the sole purpose of implementing, constructing, servicing and maintaining approved coastal zone management and/or restoration projects. Utilization of any and all rights derived under this lease by the mineral lessee, its agents, successors or assigns, shall not interfere with nor hinder the reasonable surface use by the Department of Natural Resources, its Offices or Commissions, as herein above reserved.

Applicant: Oil And Gas Resources, Inc.

Bidder	Cash Payment	Price/Acre	Rental	Oil	Gas	Other



P.O.B.
 X=2,723,850.00
 Y=344,455.00