

TRACT 36461 - Portion of Block 71, Chandeleur Sound Area, St. Bernard Parish, Louisiana

All of the lands now or formerly constituting the beds and bottoms of all water bodies of every nature and description the title of which vests in the State of Louisiana, together with all islands arising therein and other lands formed by accretion or by reliction, where allowed by law, excepting tax adjudicated lands, and not presently under mineral lease on July 14, 2004, situated in St. Bernard Parish, Louisiana, and more particularly described as follows: Beginning at the Southeast corner of State Lease No. 17276, also point being on the East boundary of Block 71, Chandeleur Sound Area, having Coordinates of X = 2,620,600.00 and Y = 383,330.00; Thence South 313.93 feet along the East boundary of said Block 71 to a point having Coordinates of X = 2,620,600.00 and Y = 383,016.07; Thence West 9,650.00 feet to a point having Coordinates of X = 2,610,950.00 and Y = 383,016.07; Thence South 1,686.07 feet to a point on the South boundary of said Block 71, having Coordinates of X = 2,610,950.00 and Y = 381,330.00; Thence West 5,100.00 feet along the South boundary of said Block 71 to its Southwest Corner, having Coordinates of X = 2,605,850.00 and Y = 381,330.00; Thence North 4,670.00 feet along the West boundary of said Block 71 to a point having Coordinates of X = 2,605,850.00 and Y = 386,000.00; Thence East 10,316.67 feet to a point on the West boundary of said State Lease No. 17276 having Coordinates of X = 2,616,166.67 and Y = 386,000.00; Thence South 29 degrees 03 minutes 17 seconds East 3,054.37 feet along the West boundary of said State Lease No. 17276 to its Southwest Corner, having Coordinates of X = 2,617,650.00 and Y = 383,330.00; Thence East 2,950.00 feet along the South boundary of said State Lease No. 17276 to the point of beginning, containing approximately **981.52 acres**, all as more particularly outlined on a plat on file in the Office of Mineral Resources, Department of Natural Resources. All bearings, distances and coordinates are based on Louisiana Coordinate System of 1927, (North or South Zone), where applicable.

NOTE: The above description of the Tract nominated for lease has been provided and corrected, where required, exclusively by the nomination party. Any mineral lease selected from this Tract and awarded by the Louisiana State Mineral Board shall be without warranty of any kind, either express, implied, or statutory, including, but not limited to, the implied warranties of merchantability and fitness for a particular purpose. Should the mineral lease awarded by the Louisiana State Mineral Board be subsequently modified, cancelled or abrogated due to the existence of conflicting leases, operating agreements, private claims or other future obligations or conditions which may affect all or any portion of the leased Tract, it shall not relieve the Lessee of the obligation to pay any bonus due thereon to the Louisiana State Mineral Board, nor shall the Louisiana State Mineral Board be obligated to refund any consideration paid by the Lessor prior to such modification, cancellation, or abrogation, including, but not limited to, bonuses, rentals and royalties.

NOTE: The State of Louisiana does hereby reserve, and this lease shall be subject to, the imprescriptible right of surface use in the nature of a servitude in favor of the Department of Natural Resources, including its Offices and Commissions, for the sole purpose of implementing, constructing, servicing and maintaining approved coastal zone management and/or restoration projects. Utilization of any and all rights derived under this lease by the mineral lessee, its agents, successors or assigns, shall not interfere with nor hinder the reasonable surface use by the Department of Natural Resources, its Offices or Commissions, as herein above reserved.

NOTE: It appears, according to our records, that a portion of this Tract is located within the restrictive safety fairway area as set out by the Corps of Engineers, U.S. Army and/or the restrictive anchorage area as set out by the U.S. Coast Guard.

NOTE: The Department of Wildlife and Fisheries has designated certain areas in the coastal waters of the State of Louisiana as Oyster Seed Bed Areas. The exact location of those Seed Bed Areas must be obtained from the Department of Wildlife and Fisheries and any work done under a mineral lease from the State of Louisiana may necessarily be conducted in conformity with the rules and regulations promulgated by the said Department of Wildlife and Fisheries for Oyster Seed Bed Areas.

Applicant: South Louisiana Minerals, Inc.

Bidder	Cash Payment	Price/Acre	Rental	Oil	Gas	Other



ST BERNARD PARISH

CHANDELEUR SOUND AREA

BLOCK CS0071

SL 17276

P.O.B.
X=2,620,600.00
Y=383,330.00

SL 18043

SL 6618

SL 12503

SL 13306

SL 17760

SL 17661

BLOCK MP0003

MAIN PASS AREA, REVISED

T15S - R18E



TRACT 36462 - Vermilion Parish, Louisiana

All of the lands now or formerly constituting the beds and bottoms of all water bodies of every nature and description the title of which vests in the State of Louisiana, together with all islands arising therein and other lands formed by accretion or by reliction, where allowed by law, excepting tax adjudicated lands, and not presently under mineral lease on July 14, 2004, situated in Vermilion Parish, Louisiana, and more particularly described as follows: Beginning at a point having Coordinates of X = 1,739,612.38 and Y = 394,717.00; thence North 34 degrees 37 minutes 00 seconds East 687.70 feet to a point having Coordinates of X = 1,740,003.05 and Y = 395,282.96; thence North 72 degrees 37 minutes 00 seconds East 655.10 feet to a point having Coordinates of X = 1,740,628.23 and Y = 395,478.68; thence North 06 degrees 37 minutes 00 seconds East 2,640.70 feet to a point having Coordinates of X = 1,740,932.50 and Y = 398,101.79; thence South 87 degrees 59 minutes 00 seconds East 1,886.70 feet to a point having Coordinates of X = 1,742,818.03 and Y = 398,035.40; thence South 12 degrees 39 minutes 41 seconds East 3,445.18 feet to a point having Coordinates of X = 1,743,573.18 and Y = 394,674.00; thence South 77 degrees 50 minutes 00 seconds West 364.87 feet to a point having Coordinates of X = 1,743,216.51 and Y = 394,597.10; thence South 81 degrees 00 minutes 00 seconds West 505.00 feet to a point having Coordinates of X = 1,742,717.72 and Y = 394,518.10; thence South 84 degrees 20 minutes 00 seconds West 500.00 feet to a point having Coordinates of X = 1,742,220.17 and Y = 394,468.73; thence South 87 degrees 20 minutes 00 seconds West 505.00 feet to a point having Coordinates of X = 1,741,715.71 and Y = 394,445.23; thence North 86 degrees 00 minutes 00 seconds West 525.00 feet to a point having Coordinates of X = 1,741,191.99 and Y = 394,481.85; thence North 83 degrees 30 minutes 00 seconds West 505.00 feet to a point having Coordinates of X = 1,740,690.24 and Y = 394,539.02; thence North 82 degrees 00 minutes 00 seconds West 505.00 feet to a point having Coordinates of X = 1,740,190.15 and Y = 394,609.30; thence North 80 degrees 00 minutes 00 seconds West 500.00 feet to a point having Coordinates of X = 1,739,697.75 and Y = 394,696.13; thence North 76 degrees 15 minutes 37 seconds West 87.88 feet to the point of beginning, containing approximately **215.89 gross acres** and **202.40 net acres**, all as more particularly outlined on a plat on file in the Office of Mineral Resources, Department of Natural Resources. All bearings, distances and coordinates are based on Louisiana Coordinate System of 1927, (North or South Zone), where applicable.

NOTE: The above description of the Tract nominated for lease has been provided and corrected, where required, exclusively by the nomination party. Any mineral lease selected from this Tract and awarded by the Louisiana State Mineral Board shall be without warranty of any kind, either express, implied, or statutory, including, but not limited to, the implied warranties of merchantability and fitness for a particular purpose. Should the mineral lease awarded by the Louisiana State Mineral Board be subsequently modified, cancelled or abrogated due to the

existence of conflicting leases, operating agreements, private claims or other future obligations or conditions which may affect all or any portion of the leased Tract, it shall not relieve the Lessee of the obligation to pay any bonus due thereon to the Louisiana State Mineral Board, nor shall the Louisiana State Mineral Board be obligated to refund any consideration paid by the Lessor prior to such modification, cancellation, or abrogation, including, but not limited to, bonuses, rentals and royalties.

NOTE: The State of Louisiana does hereby reserve, and this lease shall be subject to, the imprescriptible right of surface use in the nature of a servitude in favor of the Department of Natural Resources, including its Offices and Commissions, for the sole purpose of implementing, constructing, servicing and maintaining approved coastal zone management and/or restoration projects. Utilization of any and all rights derived under this lease by the mineral lessee, its agents, successors or assigns, shall not interfere with nor hinder the reasonable surface use by the Department of Natural Resources, its Offices or Commissions, as herein above reserved.

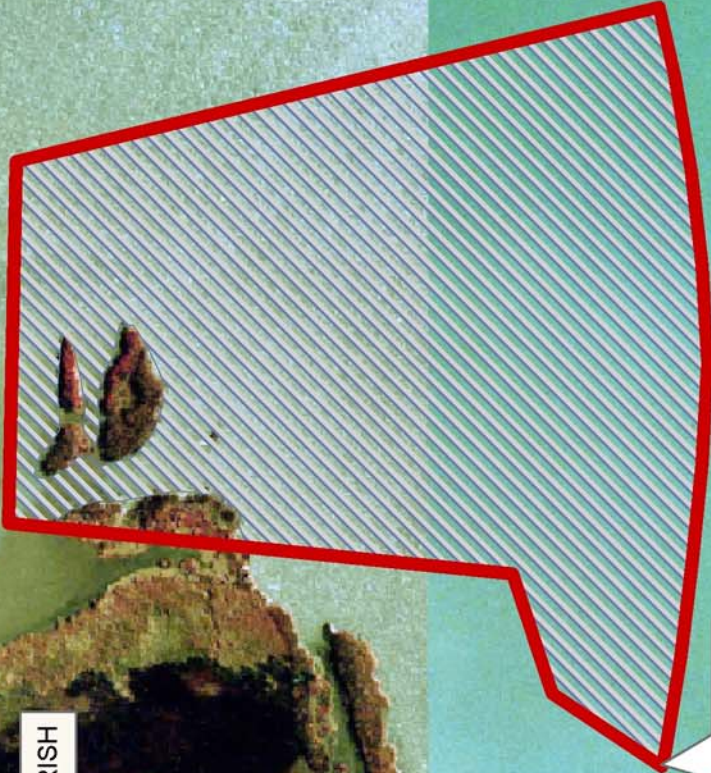
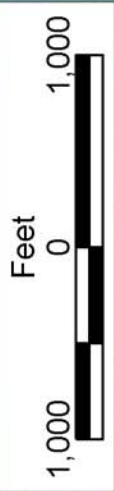
NOTE: The Department of Wildlife and Fisheries has designated certain areas in the coastal waters of the State of Louisiana as Oyster Seed Bed Areas. The exact location of those Seed Bed Areas must be obtained from the Department of Wildlife and Fisheries and any work done under a mineral lease from the State of Louisiana may necessarily be conducted in conformity with the rules and regulations promulgated by the said Department of Wildlife and Fisheries for Oyster Seed Bed Areas.

Applicant: Jim Rousseau

Bidder	Cash Payment	Price/Acre	Rental	Oil	Gas	Other



VERMILION BAY



P.O.B.
X=1,739,612.38
Y=394,717.00

VERMILION PARISH

SL 16995

SL 17226

SL 17826

TRACT 36463 - Portion of Block 72, Chandeleur Sound Area, St. Bernard Parish, Louisiana

All of the lands now or formerly constituting the beds and bottoms of all water bodies of every nature and description the title of which vests in the State of Louisiana, together with all islands arising therein and other lands formed by accretion or by reliction, where allowed by law, excepting tax adjudicated lands, and not presently under mineral lease on July 14, 2004, situated in St. Bernard Parish, Louisiana, and more particularly described as follows: Beginning the Southeast corner of Block 72, Chandeleur Sound Area, having Coordinates of X = 2,605,850.00 and Y = 381,330.00; Thence West 7,750.00 feet along the South boundary of said Block 72 to a point having Coordinates of X = 2,598,100.00 and Y = 381,330.00; Thence North 2,000.00 feet to a point having Coordinates of X = 2,598,100.00 and Y = 383,330.00; Thence West 7,000.00 feet to a point on the West boundary of said Block 72, having Coordinates of X = 2,591,100.00 and Y = 383,330.00; Thence North 2,670.00 feet along the West boundary of said Block 72 to a point having Coordinates of X = 2,591,100.00 and Y = 386,000.00; Thence East 14,750.00 feet to a point on the East boundary of said Block 72, having Coordinates of X = 2,605,850.00 and Y = 386,000.00; Thence South 4,670.00 feet along the said East boundary of Block 72 to the point of beginning, containing approximately **204 acres**, all as more particularly outlined on a plat on file in the Office of Mineral Resources, Department of Natural Resources. All bearings, distances and coordinates are based on Louisiana Coordinate System of 1927, (North or South Zone), where applicable.

NOTE: The above description of the Tract nominated for lease has been provided and corrected, where required, exclusively by the nomination party. Any mineral lease selected from this Tract and awarded by the Louisiana State Mineral Board shall be without warranty of any kind, either express, implied, or statutory, including, but not limited to, the implied warranties of merchantability and fitness for a particular purpose. Should the mineral lease awarded by the Louisiana State Mineral Board be subsequently modified, cancelled or abrogated due to the existence of conflicting leases, operating agreements, private claims or other future obligations or conditions which may affect all or any portion of the leased Tract, it shall not relieve the Lessee of the obligation to pay any bonus due thereon to the Louisiana State Mineral Board, nor shall the Louisiana State Mineral Board be obligated to refund any consideration paid by the Lessor prior to such modification, cancellation, or abrogation, including, but not limited to, bonuses, rentals and royalties.

NOTE: The State of Louisiana does hereby reserve, and this lease shall be subject to, the imprescriptible right of surface use in the nature of a servitude in favor of the Department of Natural Resources, including its Offices and Commissions, for the sole purpose of implementing, constructing, servicing and maintaining approved coastal zone management and/or restoration projects. Utilization of any and all rights derived under this lease by the mineral lessee, its agents, successors or assigns,

shall not interfere with nor hinder the reasonable surface use by the Department of Natural Resources, its Offices or Commissions, as herein above reserved.

NOTE: It appears, according to our records, that a portion of this Tract is located within the restrictive safety fairway area as set out by the Corps of Engineers, U.S. Army and/or the restrictive anchorage area as set out by the U.S. Coast Guard.

NOTE: The Department of Wildlife and Fisheries has designated certain areas in the coastal waters of the State of Louisiana as Oyster Seed Bed Areas. The exact location of those Seed Bed Areas must be obtained from the Department of Wildlife and Fisheries and any work done under a mineral lease from the State of Louisiana may necessarily be conducted in conformity with the rules and regulations promulgated by the said Department of Wildlife and Fisheries for Oyster Seed Bed Areas.

Applicant: South Louisiana Minerals, Inc.

Bidder	Cash Payment	Price/Acre	Rental	Oil	Gas	Other



SL 16158

CHANDELEUR SOUND AREA

BLOCK CS0072

ST BERNARD PARISH

SL 15959

P.O.B.
X=2,605,850.00
Y=381,330.00

T16S - R18E

MAIN PASS AREA, REVISED

BLOCK MP0002

T15S - R17E



TRACT 36464 - Vermilion Parish, Louisiana

All of the lands now or formerly constituting the beds and bottoms of all water bodies of every nature and description the title of which vests in the State of Louisiana, together with all islands arising therein and other lands formed by accretion or by reliction, where allowed by law, excepting tax adjudicated lands, and not presently under mineral lease on July 14, 2004, situated in Vermilion Parish, Louisiana, and more particularly described as follows: Beginning at a point having Coordinates of X = 1,733,624.32 and Y = 396,686.96; thence South 70 degrees 56 minutes 56 seconds East 540.00 feet to a point on the Westerly boundary of State Lease No. 17208, having Coordinates of X = 1,734,134.74 and Y = 396,510.70; thence South 43 degrees 52 minutes 36 seconds West 743.66 feet along the Westerly boundary of said State Lease No. 17208 to a point having Coordinates of X = 1,733,619.31 and Y = 395,974.64; thence North 00 degrees 24 minutes 13 seconds East 712.34 feet to the point of beginning, containing approximately **4.18 acres**, all as more particularly outlined on a plat on file in the Office of Mineral Resources, Department of Natural Resources. All bearings, distances and coordinates are based on Louisiana Coordinate System of 1927, (North or South Zone), where applicable.

NOTE: The above description of the Tract nominated for lease has been provided and corrected, where required, exclusively by the nomination party. Any mineral lease selected from this Tract and awarded by the Louisiana State Mineral Board shall be without warranty of any kind, either express, implied, or statutory, including, but not limited to, the implied warranties of merchantability and fitness for a particular purpose. Should the mineral lease awarded by the Louisiana State Mineral Board be subsequently modified, cancelled or abrogated due to the existence of conflicting leases, operating agreements, private claims or other future obligations or conditions which may affect all or any portion of the leased Tract, it shall not relieve the Lessee of the obligation to pay any bonus due thereon to the Louisiana State Mineral Board, nor shall the Louisiana State Mineral Board be obligated to refund any consideration paid by the Lessor prior to such modification, cancellation, or abrogation, including, but not limited to, bonuses, rentals and royalties.

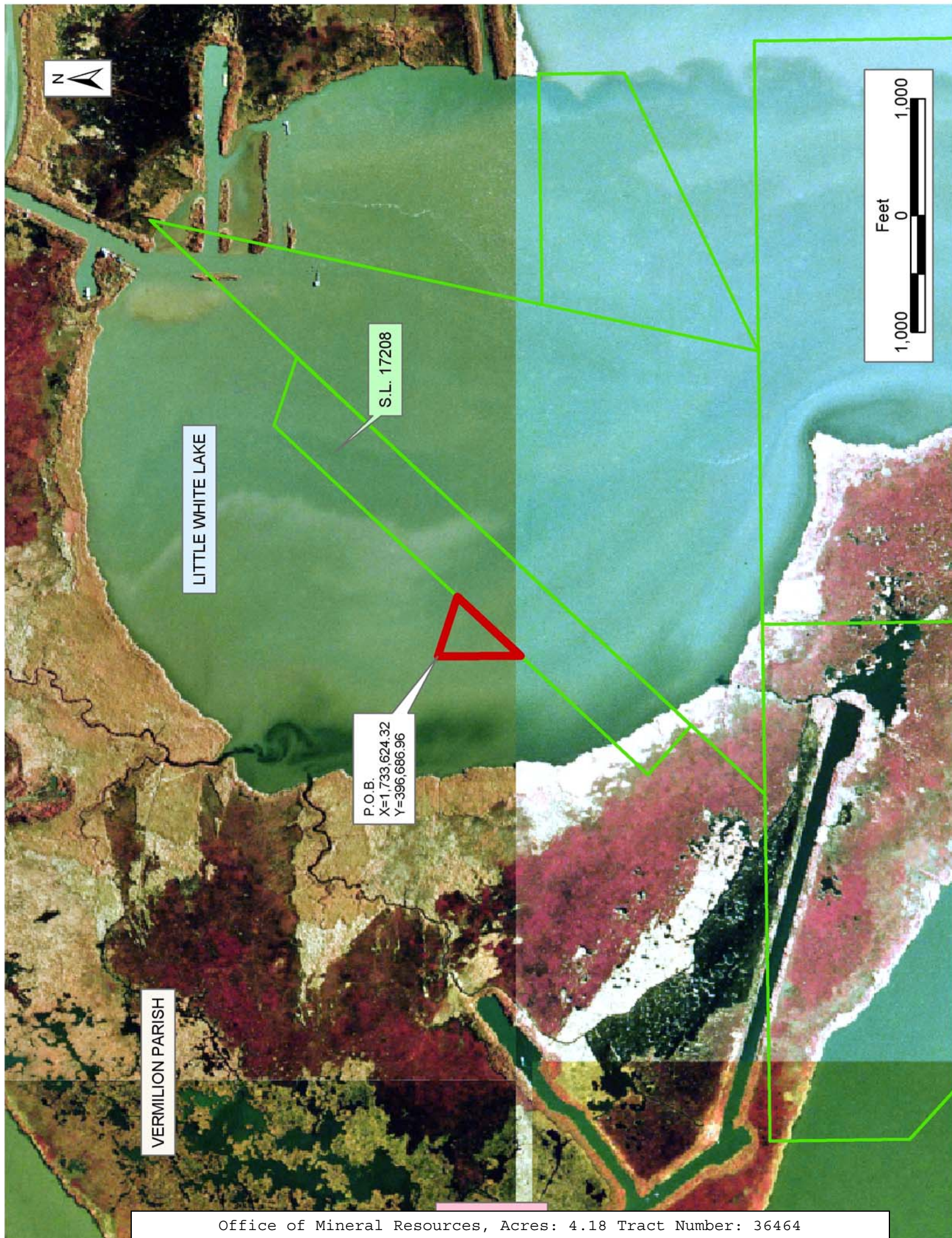
NOTE: The State of Louisiana does hereby reserve, and this lease shall be subject to, the imprescriptible right of surface use in the nature of a servitude in favor of the Department of Natural Resources, including its Offices and Commissions, for the sole purpose of implementing, constructing, servicing and maintaining approved coastal zone management and/or restoration projects. Utilization of any and all rights derived under this lease by the mineral lessee, its agents, successors or assigns, shall not interfere with nor hinder the reasonable surface use by the Department of Natural Resources, its Offices or Commissions, as herein above reserved.

NOTE: The Department of Wildlife and Fisheries has designated certain areas in the coastal waters of the State of Louisiana as Oyster Seed Bed

Areas. The exact location of those Seed Bed Areas must be obtained from the Department of Wildlife and Fisheries and any work done under a mineral lease from the State of Louisiana may necessarily be conducted in conformity with the rules and regulations promulgated by the said Department of Wildlife and Fisheries for Oyster Seed Bed Areas.

Applicant: Jim Rousseau

Bidder	Cash Payment	Price/Acre	Rental	Oil	Gas	Other

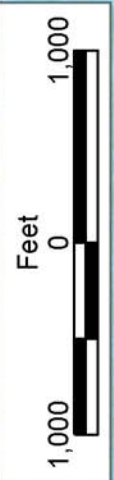


LITTLE WHITE LAKE

S.L. 17208

P.O.B.
X=1,733,624.32
Y=396,686.96

VERMILION PARISH



TRACT 36465 - Portion of Block 8, Breton Sound Area, St. Bernard Parish, Louisiana

All of the lands now or formerly constituting the beds and bottoms of all water bodies of every nature and description the title of which vests in the State of Louisiana, together with all islands arising therein and other lands formed by accretion or by reliction, where allowed by law, excepting tax adjudicated lands, and not presently under mineral lease on July 14, 2004, situated in St. Bernard Parish, Louisiana, and more particularly described as follows: Beginning at a point on the West boundary of Block 8, Breton Sound Area, having Coordinates of X = 2,738,600.00 and Y = 373,955.00; Thence North 7,375.00 feet along the said West boundary of said Block 8 to its Northwest corner having Coordinates of X = 2,738,600.00 and Y = 381,330.00; Thence East 14,750.00 feet along the North boundary of said Block 8 to its Northeast corner having Coordinates of X = 2,753,350.00 and Y = 381,330.00; Thence South 7,375.00 feet along the East boundary of said Block 8 to a point having Coordinates of X = 2,753,350.00 and Y = 373,955.00; Thence West 14,750.00 feet to the point of beginning, containing approximately **2,497.27 acres**, all as more particularly outlined on a plat on file in the Office of Mineral Resources, Department of Natural Resources. All bearings, distances and coordinates are based on Louisiana Coordinate System of 1927, (North or South Zone), where applicable.

NOTE: The above description of the Tract nominated for lease has been provided and corrected, where required, exclusively by the nomination party. Any mineral lease selected from this Tract and awarded by the Louisiana State Mineral Board shall be without warranty of any kind, either express, implied, or statutory, including, but not limited to, the implied warranties of merchantability and fitness for a particular purpose. Should the mineral lease awarded by the Louisiana State Mineral Board be subsequently modified, cancelled or abrogated due to the existence of conflicting leases, operating agreements, private claims or other future obligations or conditions which may affect all or any portion of the leased Tract, it shall not relieve the Lessee of the obligation to pay any bonus due thereon to the Louisiana State Mineral Board, nor shall the Louisiana State Mineral Board be obligated to refund any consideration paid by the Lessor prior to such modification, cancellation, or abrogation, including, but not limited to, bonuses, rentals and royalties.

NOTE: The Office of Mineral Resources will require a minimum bonus of \$190 per acre and a minimum royalty of 22%.

NOTE: The State of Louisiana does hereby reserve, and this lease shall be subject to, the imprescriptible right of surface use in the nature of a servitude in favor of the Department of Natural Resources, including its Offices and Commissions, for the sole purpose of implementing, constructing, servicing and maintaining approved coastal zone management and/or restoration projects. Utilization of any and all rights derived under this lease by the mineral lessee, its agents, successors or assigns,

shall not interfere with nor hinder the reasonable surface use by the Department of Natural Resources, its Offices or Commissions, as herein above reserved.

Applicant: Oil And Gas Resources, Inc.

Bidder	Cash Payment	Price/Acre	Rental	Oil	Gas	Other



ST BERNARD PARISH

BLOCK CS0061

BLOCK MP0005

MAIN PASS
AREA, REVISED



Coastline

BLOCK CS0062

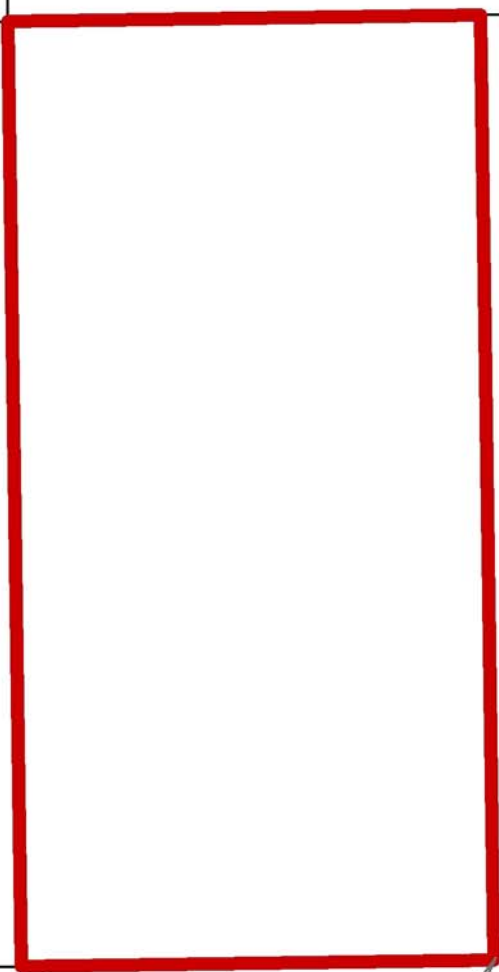
BLOCK BS0008

CHANDELEUR SOUND AREA

BRETON SOUND AREA

BLOCK CS0063

BLOCK BS0007



P.O.B.
X=2,738,600.00
Y=373,955.00

TRACT 36466 - Portion of Blocks 5, and 8, Main Pass Area, Revised, Plaquemines and St. Bernard Parishes, Louisiana

All of the lands now or formerly constituting the beds and bottoms of all water bodies of every nature and description the title of which vests in the State of Louisiana, together with all islands arising therein and other lands formed by accretion or by reliction, where allowed by law, excepting tax adjudicated lands, and not presently under mineral lease on July 14, 2004, situated in Plaquemines and St. Bernard Parishes, Louisiana, and more particularly described as follows: Beginning at a point on the North boundary of Block 5, Main Pass Area, Revised, having Coordinates of X = 2,757,292.59 and Y = 381,330.00; Thence South 14,750.00 feet to a point on the South boundary of said Block 5, also being a point on the Coastline as defined by the report of the Special Master and set forth in the judgment decree in June of 1975 by the Supreme Court of the United States in the litigation styled United States v. State of Louisiana, et al No. 9 Original, having Coordinates of X = 2,757,292.59 and Y = 366,580.00; Thence along the said Coastline the following courses: Southwesterly to a point having Coordinates of X = 2,755,709.00 and Y = 364,596.00; Southwesterly to a point having Coordinates of X = 2,755,015.00 and Y = 363,480.00; Southwesterly to a point on the West boundary of Block 8 having Coordinates of X = 2,753,350.00 and Y = 361,846.90; Thence North 4,733.10 feet along the said West boundary of Block 8 to its Northwest corner, also being the Southwest corner of said Block 5 having Coordinates of X = 2,753,350.00 and Y = 366,580.00; Thence North 14,750.00 feet along the West boundary of said Block 5 to its Northwest corner having Coordinates of X = 2,753,350.00 and Y = 381,330.00; Thence East 3,942.59 feet along the North boundary of said Block 5 to the point of beginning, containing approximately **1,561.28 acres**, all as more particularly outlined on a plat on file in the Office of Mineral Resources, Department of Natural Resources. All bearings, distances and coordinates are based on Louisiana Coordinate System of 1927, (North or South Zone), where applicable.

NOTE: The above description of the Tract nominated for lease has been provided and corrected, where required, exclusively by the nomination party. Any mineral lease selected from this Tract and awarded by the Louisiana State Mineral Board shall be without warranty of any kind, either express, implied, or statutory, including, but not limited to, the implied warranties of merchantability and fitness for a particular purpose. Should the mineral lease awarded by the Louisiana State Mineral Board be subsequently modified, cancelled or abrogated due to the existence of conflicting leases, operating agreements, private claims or other future obligations or conditions which may affect all or any portion of the leased Tract, it shall not relieve the Lessee of the obligation to pay any bonus due thereon to the Louisiana State Mineral Board, nor shall the Louisiana State Mineral Board be obligated to refund any consideration paid by the Lessor prior to such modification, cancellation, or abrogation, including, but not limited to, bonuses, rentals and royalties.

NOTE: The Office of Mineral Resources will require a minimum bonus of \$190 per acre and a minimum royalty of 22%.

NOTE: The State of Louisiana does hereby reserve, and this lease shall be subject to, the imprescriptible right of surface use in the nature of a servitude in favor of the Department of Natural Resources, including its Offices and Commissions, for the sole purpose of implementing, constructing, servicing and maintaining approved coastal zone management and/or restoration projects. Utilization of any and all rights derived under this lease by the mineral lessee, its agents, successors or assigns, shall not interfere with nor hinder the reasonable surface use by the Department of Natural Resources, its Offices or Commissions, as herein above reserved.

Applicant: Oil And Gas Resources, Inc.

Bidder	Cash Payment	Price/Acre	Rental	Oil	Gas	Other



P.O.B.
X=2,757,292.59
Y=381,330.00

BLOCK MP0005

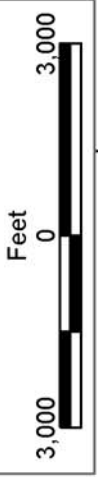
Coastline

MAIN PASS
AREA, REVISED

ST BERNARD PARISH

PLAQUEMINES PARISH

BLOCK MP0008



BLOCK BS0008

BRETON SOUND AREA

BLOCK BS0009

TRACT 36467 - Portion of Block 5, Main Pass Area, Revised, St. Bernard Parish, Louisiana

All of the lands now or formerly constituting the beds and bottoms of all water bodies of every nature and description the title of which vests in the State of Louisiana, together with all islands arising therein and other lands formed by accretion or by reliction, where allowed by law, excepting tax adjudicated lands, and not presently under mineral lease on July 14, 2004, situated in St. Bernard Parish, Louisiana, and more particularly described as follows: Beginning at a point on the North boundary of Block 5, Main Pass Area, Revised, having Coordinates of X = 2,757,292.59 and Y = 381,330.00; Thence East 10,807.41 feet along the said North boundary of Block 5 to its Northeast corner having Coordinates of X = 2,768,100.00 and Y = 381,330.00; Thence South 967.57 feet along the East boundary of said Block 5 to a point on the Coastline as defined by the report of the Special Master and set forth in the judgment decree in June of 1975 by the Supreme Court of the United States in the litigation styled United States v. State of Louisiana, et al No. 9 Original, having Coordinates of X = 2,768,100.00 and Y = 380,362.43; Thence along the said Coastline the following courses: Southwesterly to a point having Coordinates of X = 2,768,031.00 and Y = 380,244.00; Southwesterly to a point having Coordinates of X = 2,767,052.00 and Y = 379,676.00; Southwesterly to a point having Coordinates of X = 2,766,408.00 and Y = 378,524.00; Southwesterly to a point having Coordinates of X = 2,761,138.00 and Y = 371,491.00; Southwesterly to a point having Coordinates of X = 2,758,093.00 and Y = 367,862.00; Southwesterly to a point having Coordinates of X = 2,757,465.00 and Y = 366,796.00; Southwesterly to a point on the South boundary of said Block 5 having Coordinates of X = 2,757,292.59 and Y = 366,580.00; Thence North 14,750.00 feet to the point of beginning, containing approximately **1,904.72 acres**, all as more particularly outlined on a plat on file in the Office of Mineral Resources, Department of Natural Resources. All bearings, distances and coordinates are based on Louisiana Coordinate System of 1927, (North or South Zone), where applicable.

NOTE: The above description of the Tract nominated for lease has been provided and corrected, where required, exclusively by the nomination party. Any mineral lease selected from this Tract and awarded by the Louisiana State Mineral Board shall be without warranty of any kind, either express, implied, or statutory, including, but not limited to, the implied warranties of merchantability and fitness for a particular purpose. Should the mineral lease awarded by the Louisiana State Mineral Board be subsequently modified, cancelled or abrogated due to the existence of conflicting leases, operating agreements, private claims or other future obligations or conditions which may affect all or any portion of the leased Tract, it shall not relieve the Lessee of the obligation to pay any bonus due thereon to the Louisiana State Mineral Board, nor shall the Louisiana State Mineral Board be obligated to refund any consideration paid by the Lessor prior to such modification, cancellation, or abrogation, including, but not limited to, bonuses, rentals and royalties.

NOTE: The Office of Mineral Resources will require a minimum bonus of \$190 per acre and a minimum royalty of 22%.

NOTE: The State of Louisiana does hereby reserve, and this lease shall be subject to, the imprescriptible right of surface use in the nature of a servitude in favor of the Department of Natural Resources, including its Offices and Commissions, for the sole purpose of implementing, constructing, servicing and maintaining approved coastal zone management and/or restoration projects. Utilization of any and all rights derived under this lease by the mineral lessee, its agents, successors or assigns, shall not interfere with nor hinder the reasonable surface use by the Department of Natural Resources, its Offices or Commissions, as herein above reserved.

Applicant: Oil And Gas Resources, Inc.

Bidder	Cash Payment	Price/Acre	Rental	Oil	Gas	Other



BLOCK CS0060

ST BERNARD PARISH

BLOCK MP0006

MAIN PASS AREA, REVISED

BLOCK MP0007



BLOCK CS0061

Coastline

BLOCK MP0005

BLOCK MP0008

CHANDELEUR SOUND AREA

P.O.B.
X=2,757,292.59
Y=381,330.00

BLOCK BS0008

BRETON SOUND AREA

BLOCK BS0009

TRACT 36468 - Portion of Block 72, Chandeleur Sound Area, St. Bernard Parish, Louisiana

All of the lands now or formerly constituting the beds and bottoms of all water bodies of every nature and description the title of which vests in the State of Louisiana, together with all islands arising therein and other lands formed by accretion or by reliction, where allowed by law, excepting tax adjudicated lands, and not presently under mineral lease on July 14, 2004, situated in St. Bernard Parish, Louisiana, and more particularly described as follows: Beginning at a point on the South boundary of Block 72, Chandeleur Sound Area, having Coordinates of X = 2,598,100.00 and Y = 381,330.00; Thence West 7,000.00 feet along the South boundary of said Block 72 to its Southwest Corner, having Coordinates of X = 2,591,100.00 and Y = 381,330.00; Thence North 2,000.00 feet along the West boundary of said Block 72 to a point having Coordinates of X = 2,591,100.00 and Y = 383,330.00; Thence East 7,000.00 feet to a point having Coordinates of X = 2,598,100.00 and Y = 383,330.00; Thence South 2,000.00 feet to the point of beginning, containing approximately **77.59 acres**, all as more particularly outlined on a plat on file in the Office of Mineral Resources, Department of Natural Resources. All bearings, distances and coordinates are based on Louisiana Coordinate System of 1927, (North or South Zone), where applicable.

NOTE: The above description of the Tract nominated for lease has been provided and corrected, where required, exclusively by the nomination party. Any mineral lease selected from this Tract and awarded by the Louisiana State Mineral Board shall be without warranty of any kind, either express, implied, or statutory, including, but not limited to, the implied warranties of merchantability and fitness for a particular purpose. Should the mineral lease awarded by the Louisiana State Mineral Board be subsequently modified, cancelled or abrogated due to the existence of conflicting leases, operating agreements, private claims or other future obligations or conditions which may affect all or any portion of the leased Tract, it shall not relieve the Lessee of the obligation to pay any bonus due thereon to the Louisiana State Mineral Board, nor shall the Louisiana State Mineral Board be obligated to refund any consideration paid by the Lessor prior to such modification, cancellation, or abrogation, including, but not limited to, bonuses, rentals and royalties.

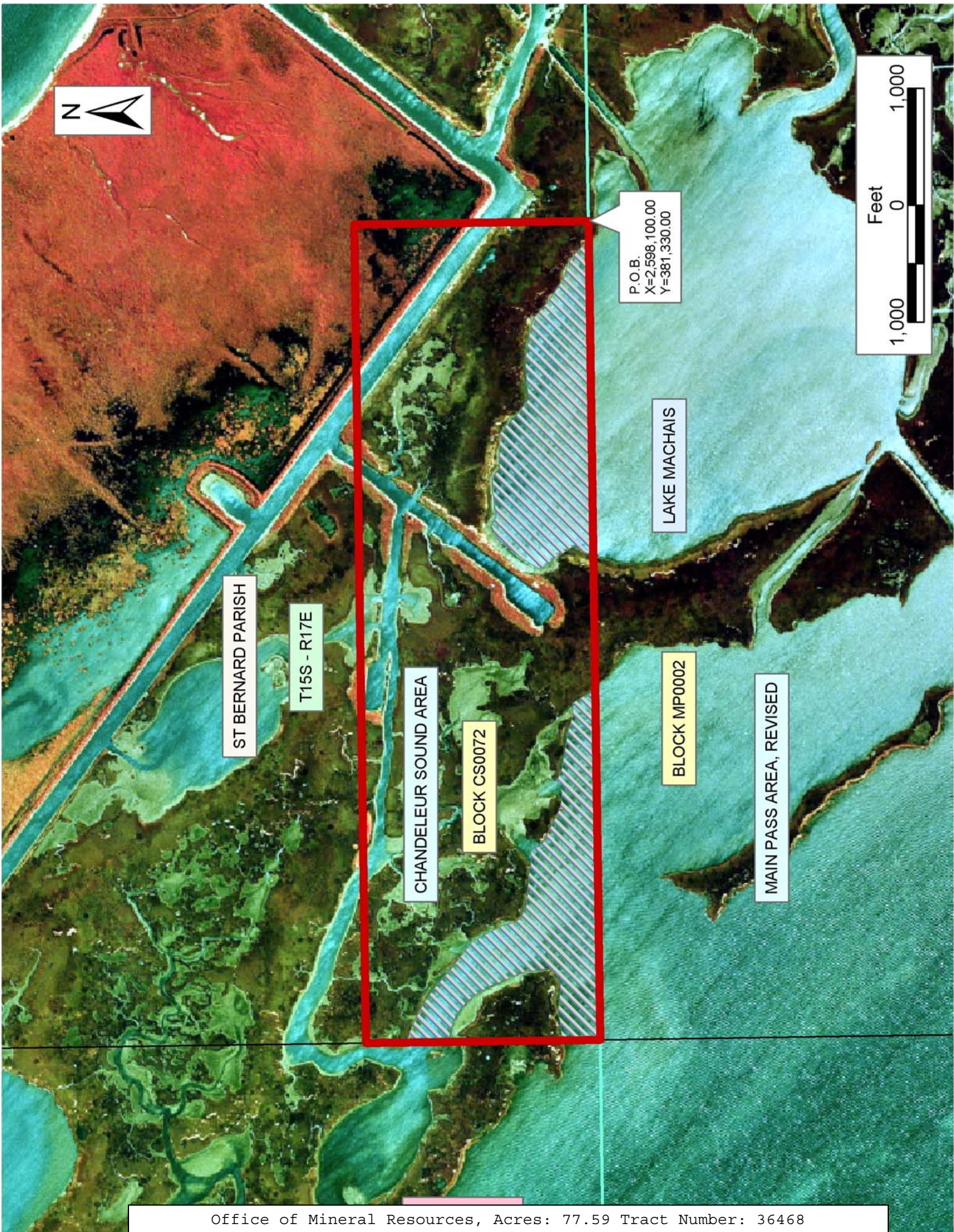
NOTE: The State of Louisiana does hereby reserve, and this lease shall be subject to, the imprescriptible right of surface use in the nature of a servitude in favor of the Department of Natural Resources, including its Offices and Commissions, for the sole purpose of implementing, constructing, servicing and maintaining approved coastal zone management and/or restoration projects. Utilization of any and all rights derived under this lease by the mineral lessee, its agents, successors or assigns, shall not interfere with nor hinder the reasonable surface use by the Department of Natural Resources, its Offices or Commissions, as herein above reserved.

NOTE: It appears, according to our records, that a portion of this Tract is located within the restrictive safety fairway area as set out by the Corps of Engineers, U.S. Army and/or the restrictive anchorage area as set out by the U.S. Coast Guard.

NOTE: The Department of Wildlife and Fisheries has designated certain areas in the coastal waters of the State of Louisiana as Oyster Seed Bed Areas. The exact location of those Seed Bed Areas must be obtained from the Department of Wildlife and Fisheries and any work done under a mineral lease from the State of Louisiana may necessarily be conducted in conformity with the rules and regulations promulgated by the said Department of Wildlife and Fisheries for Oyster Seed Bed Areas.

Applicant: South Louisiana Minerals, Inc.

Bidder	Cash Payment	Price/Acre	Rental	Oil	Gas	Other



P.O.B.
X=2,598,100.00
Y=381,330.00

ST BERNARD PARISH

T15S - R17E

CHANDELEUR SOUND AREA

BLOCK CS0072

LAKE MACHAIS

BLOCK MP0002

MAIN PASS AREA, REVISED

TRACT 36469 - Portion of Block 71, Chandeleur Sound Area, St. Bernard Parish, Louisiana

All of the lands now or formerly constituting the beds and bottoms of all water bodies of every nature and description the title of which vests in the State of Louisiana, together with all islands arising therein and other lands formed by accretion or by reliction, where allowed by law, excepting tax adjudicated lands, and not presently under mineral lease on July 14, 2004, situated in St. Bernard Parish, Louisiana, and more particularly described as follows: Beginning at a point on the East boundary of Block 71, Chandeleur Sound Area, having Coordinates of X = 2,620,600.00 and Y = 383,016.07; Thence South 1,091.96 feet along the said East boundary of Block 71 to the Northeast Corner of State Lease No. 18043, point having Coordinates of X = 2,620,600.00 and Y = 381,924.11; Thence along the Northern boundary of said State Lease No. 18403 the following courses: West 1,312.69 feet to a point having Coordinates of X = 2,619,287.31 and Y = 381,924.11; South 73 degrees 29 minutes 10 seconds West 1,007.60 feet to a point having Coordinates of X = 2,618,321.27 and Y = 381,637.70; South 82 degrees 45 minutes 10 seconds West 818.40 feet to a point on the boundary of State Lease No. 6618, as amended also being the boundary of the 5900 feet RA SUA created by Office of Conservation Order 1086 East effective date September 19, 1989 having Coordinates of X = 2,617,509.41 and Y = 381,534.46; Thence along the said Northern boundary of State Lease No. 6618, as amended the following courses: North 73 degrees 50 minutes 29 seconds West 776.21 feet along the said boundary of 5900 feet RA SUA, also being the boundary of State Lease No. 6618, as amended having Coordinates of X = 2,616,763.86 and Y = 381,750.48; Northeasterly along a curve to the left with a radius of 8,900.00 feet, an arc length of 629.78 feet and chord of North 76 degrees 45 minutes 56 seconds East 629.65 feet along the said boundary of the 5900 feet RA SUA, also being the boundary of State Lease No. 6618, as amended having Coordinates of X = 2,617,376.79 and Y = 381,894.63; Northwesterly along a curve to the left with a radius of 5,000.00 feet, an arc length of 2,158.27 feet and chord of North 80 degrees 53 minutes 23 seconds West 2,141.55 feet along the said boundary of the 5900 feet RA SUA, also being the boundary of State Lease No. 6618, as amended having Coordinates of X = 2,615,262.25 and Y = 382,233.71; Southwesterly along a curve to the left with a radius of 4,000.00 feet, an arc length of 2,096.83 feet and chord of South 77 degrees 10 minutes 30 seconds West 2,072.90 feet along the said boundary of the 5900 feet RA SUA, also being the boundary of State Lease No. 6618, as amended having Coordinates of X = 2,613,241.06 and Y = 381,773.58; Southeasterly along a curve to the left with a radius of 10,000.00 feet, an arc length of 598.93 feet and chord of South 80 degrees 31 minutes 23 seconds East 598.84 feet along the said boundary of the 5900 feet RA SUA, also being the boundary of State Lease No. 6618, as amended having Coordinates of X = 2,613,831.73 and Y = 381,674.98; Thence South 65 degrees 31 minutes 40 seconds West 73.60 feet to a point having Coordinates of X = 2,613,764.74 and Y = 381,644.49; Thence South 68 degrees 16 minutes 28 seconds West 372.65 feet to a point having Coordinates of X = 2,613,418.56 and Y = 381,506.55; Thence South 58

degrees 07 minutes 00 seconds East 52.69 feet to the Southwest Corner of State Lease No. 13306 having Coordinates of X = 2,613,463.30 and Y = 381,478.72; Thence along the said Southern boundary of said State Lease No. 13306 the following courses: South 58 degrees 06 minutes 56 seconds East 246.99 feet to a point having Coordinates of X = 2,613,673.02 and Y = 381,348.26; South 68 degrees 47 minutes 22 seconds East 50.42 feet to a point on the South boundary of said Block 71 having Coordinates of X = 2,613,720.02 and Y = 381,330.02; Thence West 2,770.02 feet along the South boundary of said Block 71 to a point having Coordinates of X = 2,610,950.00 and Y = 381,330.00; Thence North 1,686.07 feet to a point having Coordinates of X = 2,610,950.00 and Y = 383,016.07; Thence East 9,650.00 feet to the point of beginning, containing approximately **270.85 acres**, all as more particularly outlined on a plat on file in the Office of Mineral Resources, Department of Natural Resources. All bearings, distances and coordinates are based on Louisiana Coordinate System of 1927, (North or South Zone), where applicable.

NOTE: The above description of the Tract nominated for lease has been provided and corrected, where required, exclusively by the nomination party. Any mineral lease selected from this Tract and awarded by the Louisiana State Mineral Board shall be without warranty of any kind, either express, implied, or statutory, including, but not limited to, the implied warranties of merchantability and fitness for a particular purpose. Should the mineral lease awarded by the Louisiana State Mineral Board be subsequently modified, cancelled or abrogated due to the existence of conflicting leases, operating agreements, private claims or other future obligations or conditions which may affect all or any portion of the leased Tract, it shall not relieve the Lessee of the obligation to pay any bonus due thereon to the Louisiana State Mineral Board, nor shall the Louisiana State Mineral Board be obligated to refund any consideration paid by the Lessor prior to such modification, cancellation, or abrogation, including, but not limited to, bonuses, rentals and royalties.

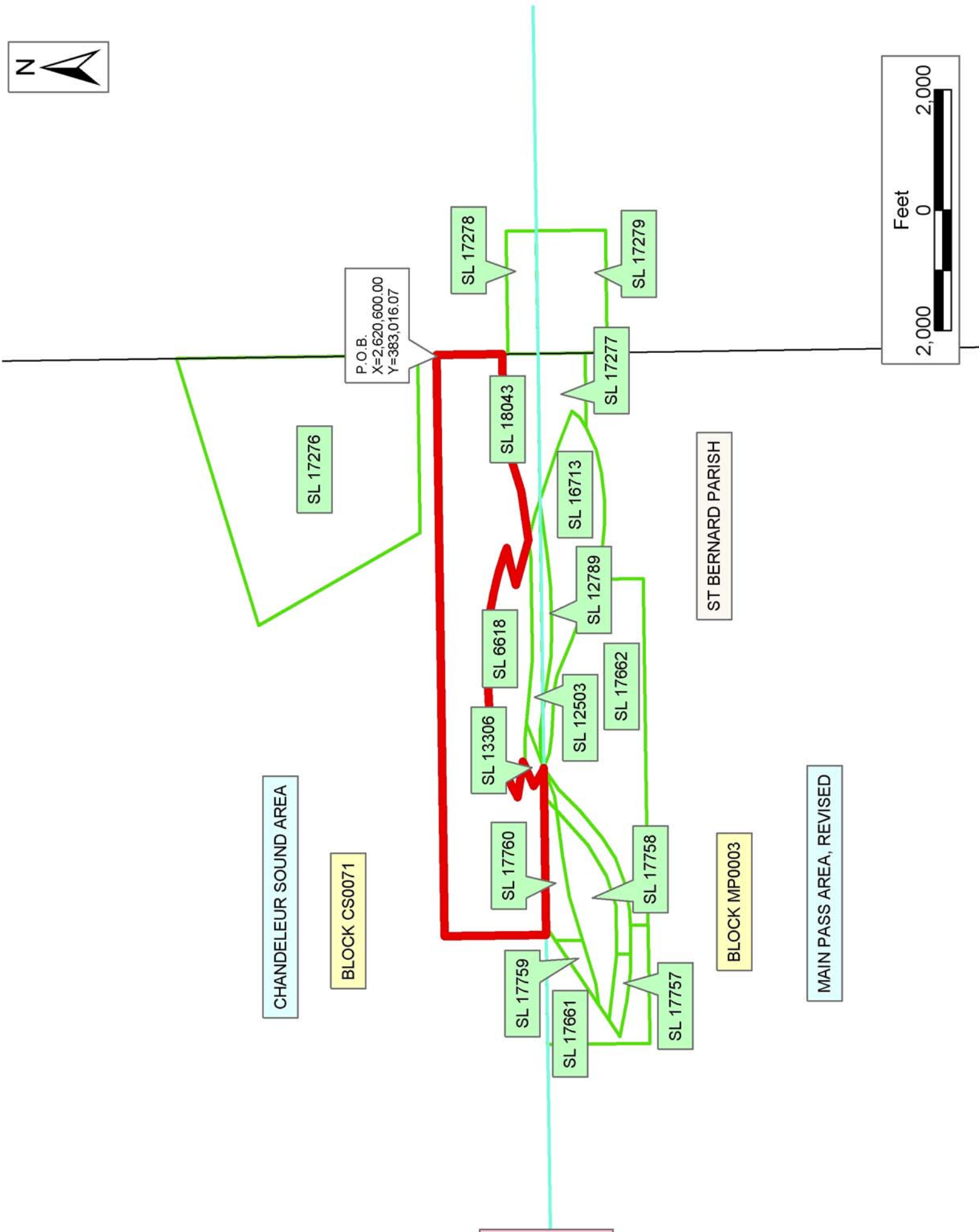
NOTE: The State of Louisiana does hereby reserve, and this lease shall be subject to, the imprescriptible right of surface use in the nature of a servitude in favor of the Department of Natural Resources, including its Offices and Commissions, for the sole purpose of implementing, constructing, servicing and maintaining approved coastal zone management and/or restoration projects. Utilization of any and all rights derived under this lease by the mineral lessee, its agents, successors or assigns, shall not interfere with nor hinder the reasonable surface use by the Department of Natural Resources, its Offices or Commissions, as herein above reserved.

NOTE: It appears, according to our records, that a portion of this Tract is located within the restrictive safety fairway area as set out by the Corps of Engineers, U.S. Army and/or the restrictive anchorage area as set out by the U.S. Coast Guard.

NOTE: The Department of Wildlife and Fisheries has designated certain areas in the coastal waters of the State of Louisiana as Oyster Seed Bed Areas. The exact location of those Seed Bed Areas must be obtained from the Department of Wildlife and Fisheries and any work done under a mineral lease from the State of Louisiana may necessarily be conducted in conformity with the rules and regulations promulgated by the said Department of Wildlife and Fisheries for Oyster Seed Bed Areas.

Applicant: South Louisiana Minerals, Inc.

Bidder	Cash Payment	Price/Acre	Rental	Oil	Gas	Other



TRACT 36470 - Portion of Block 6, Breton Sound Area, St. Bernard Parish, Louisiana

All of the lands now or formerly constituting the beds and bottoms of all water bodies of every nature and description the title of which vests in the State of Louisiana, together with all islands arising therein and other lands formed by accretion or by reliction, where allowed by law, excepting tax adjudicated lands, and not presently under mineral lease on July 14, 2004, situated in St. Bernard Parish, Louisiana, and more particularly described as follows: Beginning at the Northeast corner of Block 6, Breton Sound Area, having Coordinates of X = 2,723,850.00 and Y = 381,330.00; Thence South 7,375.00 feet along the East boundary of said Block 6 to a point having Coordinates of X = 2,723,850.00 and Y = 373,955.00; Thence West 14,750.00 feet to a point on the West boundary of said Block 6 having Coordinates of X = 2,709,100.00 and Y = 373,955.00; Thence North 7,375.00 feet along the said West boundary of said Block 6 to its Northwest corner having Coordinates of X = 2,709,100.00 and Y = 381,330.00; Thence East 14,750.00 feet along the North boundary of said Block 6 to the point of beginning, containing approximately **2,497.27 acres**, all as more particularly outlined on a plat on file in the Office of Mineral Resources, Department of Natural Resources. All bearings, distances and coordinates are based on Louisiana Coordinate System of 1927, (North or South Zone), where applicable.

NOTE: The above description of the Tract nominated for lease has been provided and corrected, where required, exclusively by the nomination party. Any mineral lease selected from this Tract and awarded by the Louisiana State Mineral Board shall be without warranty of any kind, either express, implied, or statutory, including, but not limited to, the implied warranties of merchantability and fitness for a particular purpose. Should the mineral lease awarded by the Louisiana State Mineral Board be subsequently modified, cancelled or abrogated due to the existence of conflicting leases, operating agreements, private claims or other future obligations or conditions which may affect all or any portion of the leased Tract, it shall not relieve the Lessee of the obligation to pay any bonus due thereon to the Louisiana State Mineral Board, nor shall the Louisiana State Mineral Board be obligated to refund any consideration paid by the Lessor prior to such modification, cancellation, or abrogation, including, but not limited to, bonuses, rentals and royalties.

NOTE: The Office of Mineral Resources will require a minimum bonus of \$190 per acre and a minimum royalty of 22%.

NOTE: The State of Louisiana does hereby reserve, and this lease shall be subject to, the imprescriptible right of surface use in the nature of a servitude in favor of the Department of Natural Resources, including its Offices and Commissions, for the sole purpose of implementing, constructing, servicing and maintaining approved coastal zone management and/or restoration projects. Utilization of any and all rights derived under this lease by the mineral lessee, its agents, successors or assigns,

shall not interfere with nor hinder the reasonable surface use by the Department of Natural Resources, its Offices or Commissions, as herein above reserved.

Applicant: Oil And Gas Resources, Inc.

Bidder	Cash Payment	Price/Acre	Rental	Oil	Gas	Other



ST BERNARD PARISH

BLOCK CS0063

BLOCK CS0064

BLOCK CS0065

CHANDELEUR SOUND AREA

P.O.B.
X=2,723,850.00
Y=381,330.00

BLOCK BS0007

BLOCK BS0006

BLOCK BS0005

BRETON SOUND AREA

