

TRACT 36451 - Portion of Block 62, Chandeleur Sound Area, St. Bernard Parish, Louisiana

All of the lands now or formerly constituting the beds and bottoms of all water bodies of every nature and description the title of which vests in the State of Louisiana, together with all islands arising therein and other lands formed by accretion or by reliction, where allowed by law, excepting tax adjudicated lands, and not presently under mineral lease on July 14, 2004, situated in St. Bernard Parish, Louisiana, and more particularly described as follows: Beginning at a point on the East boundary of Block 62, Chandeleur Sound Area, having Coordinates of X = 2,753,350.00 and Y = 388,705.00; Thence South 7,375.00 feet along the said East boundary of Block 62 to its Southeast corner having Coordinates of X = 2,753,350.00 and Y = 381,330.00; Thence West 14,750.00 feet along the South boundary of said Block 62 to its Southwest corner having Coordinates of X = 2,738,600.00 and Y = 381,330.00; Thence North 7,375.00 feet along the West boundary of said Block 62 to a point having Coordinates of X = 2,738,600.00 and Y = 388,705.00; Thence East 14,750.00 feet to the point of beginning, containing approximately **2,497.27 acres**, all as more particularly outlined on a plat on file in the Office of Mineral Resources, Department of Natural Resources. All bearings, distances and coordinates are based on Louisiana Coordinate System of 1927, (North or South Zone), where applicable.

NOTE: The above description of the Tract nominated for lease has been provided and corrected, where required, exclusively by the nomination party. Any mineral lease selected from this Tract and awarded by the Louisiana State Mineral Board shall be without warranty of any kind, either express, implied, or statutory, including, but not limited to, the implied warranties of merchantability and fitness for a particular purpose. Should the mineral lease awarded by the Louisiana State Mineral Board be subsequently modified, cancelled or abrogated due to the existence of conflicting leases, operating agreements, private claims or other future obligations or conditions which may affect all or any portion of the leased Tract, it shall not relieve the Lessee of the obligation to pay any bonus due thereon to the Louisiana State Mineral Board, nor shall the Louisiana State Mineral Board be obligated to refund any consideration paid by the Lessor prior to such modification, cancellation, or abrogation, including, but not limited to, bonuses, rentals and royalties.

NOTE: The Office of Mineral Resources will require a minimum bonus of \$190 per acre and a minimum royalty of 22%.

NOTE: The State of Louisiana does hereby reserve, and this lease shall be subject to, the imprescriptible right of surface use in the nature of a servitude in favor of the Department of Natural Resources, including its Offices and Commissions, for the sole purpose of implementing, constructing, servicing and maintaining approved coastal zone management and/or restoration projects. Utilization of any and all rights derived under this lease by the mineral lessee, its agents, successors or assigns,

shall not interfere with nor hinder the reasonable surface use by the Department of Natural Resources, its Offices or Commissions, as herein above reserved.

Applicant: Oil And Gas Resources, Inc.

Bidder	Cash Payment	Price/Acre	Rental	Oil	Gas	Other



ST BERNARD PARISH

BLOCK CS0061

BLOCK MP0005

P.O.B.
X=2,753,350.00
Y=388,705.00



BLOCK CS0062

BLOCK BS0008

CHANDELEUR SOUND AREA

BRETON SOUND AREA

BLOCK CS0063

BLOCK BS0007

TRACT 36452 - Portion of Block 61, Chandeleur Sound Area, St. Bernard Parish, Louisiana

All of the lands now or formerly constituting the beds and bottoms of all water bodies of every nature and description the title of which vests in the State of Louisiana, together with all islands arising therein and other lands formed by accretion or by reliction, where allowed by law, excepting tax adjudicated lands, and not presently under mineral lease on July 14, 2004, situated in St. Bernard Parish, Louisiana, and more particularly described as follows: Beginning at a point on the West boundary of Block 61, Chandeleur Sound Area, having Coordinates of X = 2,753,350.00 and Y = 388,705.00; Thence East 14,750.00 feet to a point on the East boundary of said Block 61 having Coordinates of X = 2,768,100.00 and Y = 388,705.00; Thence South 7,375.00 feet along the said East boundary of Block 61 to its Southeast corner having Coordinates of X = 2,768,100.00 and Y = 381,330.00; Thence West 14,750.00 feet along the South boundary of said Block 62 to its Southwest corner having Coordinates of X = 2,753,350.00 and Y = 381,330.00; Thence North 7,375.00 feet along the West boundary of said Block 61 to the point of beginning, containing approximately **2,497.27 acres**, all as more particularly outlined on a plat on file in the Office of Mineral Resources, Department of Natural Resources. All bearings, distances and coordinates are based on Louisiana Coordinate System of 1927, (North or South Zone), where applicable.

NOTE: The above description of the Tract nominated for lease has been provided and corrected, where required, exclusively by the nomination party. Any mineral lease selected from this Tract and awarded by the Louisiana State Mineral Board shall be without warranty of any kind, either express, implied, or statutory, including, but not limited to, the implied warranties of merchantability and fitness for a particular purpose. Should the mineral lease awarded by the Louisiana State Mineral Board be subsequently modified, cancelled or abrogated due to the existence of conflicting leases, operating agreements, private claims or other future obligations or conditions which may affect all or any portion of the leased Tract, it shall not relieve the Lessee of the obligation to pay any bonus due thereon to the Louisiana State Mineral Board, nor shall the Louisiana State Mineral Board be obligated to refund any consideration paid by the Lessor prior to such modification, cancellation, or abrogation, including, but not limited to, bonuses, rentals and royalties.

NOTE: The Office of Mineral Resources will require a minimum bonus of \$190 per acre and a minimum royalty of 22%.

NOTE: The State of Louisiana does hereby reserve, and this lease shall be subject to, the imprescriptible right of surface use in the nature of a servitude in favor of the Department of Natural Resources, including its Offices and Commissions, for the sole purpose of implementing, constructing, servicing and maintaining approved coastal zone management and/or restoration projects. Utilization of any and all rights derived under this lease by the mineral lessee, its agents, successors or assigns,

shall not interfere with nor hinder the reasonable surface use by the Department of Natural Resources, its Offices or Commissions, as herein above reserved.

Applicant: Oil And Gas Resources, Inc.

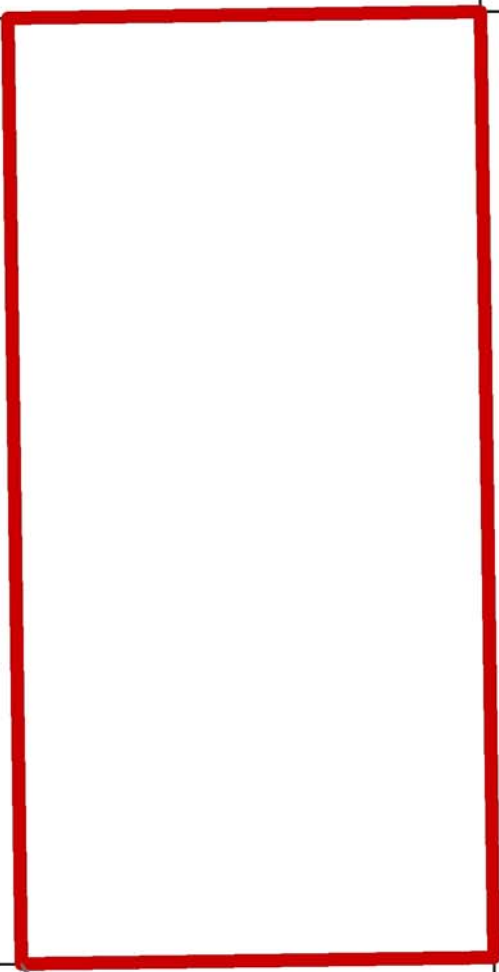
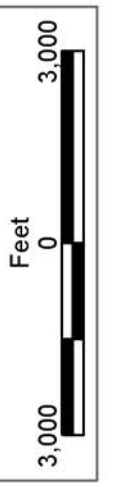
Bidder	Cash Payment	Price/Acre	Rental	Oil	Gas	Other



ST BERNARD PARISH

BLOCK CS0060

BLOCK MP0006



BLOCK CS0061

BLOCK MP0005

MAIN PASS AREA, REVISED

CHANDELEUR SOUND AREA

BLOCK CS0062

P.O.B.
X=2,753,350.00
Y=388,705.00

BLOCK BS0008

BRETON SOUND AREA

TRACT 36453 - Portion of Block 72, Chandeleur Sound Area, St. Bernard Parish, Louisiana

All of the lands now or formerly constituting the beds and bottoms of all water bodies of every nature and description the title of which vests in the State of Louisiana, together with all islands arising therein and other lands formed by accretion or by reliction, where allowed by law, excepting tax adjudicated lands, and not presently under mineral lease on July 14, 2004, situated in St. Bernard Parish, Louisiana, and more particularly described as follows: Beginning at the Southwest corner of State Lease No. 16158, having Coordinates of X = 2,598,475.00 and Y = 388,705.00; Thence East 7,375.00 feet along the South line of said State Lease No. 16158 to its Southeast corner, on East Boundary of Block 72 having Coordinates of X = 2,605,850.00 and Y = 388,705.00; Thence South 2,705.00 feet along the East Boundary of said Block 72 to a point having Coordinates of X = 2,605,850.00 and Y = 386,000.00; Thence West 7,375.00 feet to a point having Coordinates of X = 2,598,475.00 and Y = 386,000.00; Thence North 2,705.00 feet to the point of beginning, containing approximately **363.18 acres**, all as more particularly outlined on a plat on file in the Office of Mineral Resources, Department of Natural Resources. All bearings, distances and coordinates are based on Louisiana Coordinate System of 1927, (North or South Zone), where applicable.

NOTE: The above description of the Tract nominated for lease has been provided and corrected, where required, exclusively by the nomination party. Any mineral lease selected from this Tract and awarded by the Louisiana State Mineral Board shall be without warranty of any kind, either express, implied, or statutory, including, but not limited to, the implied warranties of merchantability and fitness for a particular purpose. Should the mineral lease awarded by the Louisiana State Mineral Board be subsequently modified, cancelled or abrogated due to the existence of conflicting leases, operating agreements, private claims or other future obligations or conditions which may affect all or any portion of the leased Tract, it shall not relieve the Lessee of the obligation to pay any bonus due thereon to the Louisiana State Mineral Board, nor shall the Louisiana State Mineral Board be obligated to refund any consideration paid by the Lessor prior to such modification, cancellation, or abrogation, including, but not limited to, bonuses, rentals and royalties.

NOTE: The State of Louisiana does hereby reserve, and this lease shall be subject to, the imprescriptible right of surface use in the nature of a servitude in favor of the Department of Natural Resources, including its Offices and Commissions, for the sole purpose of implementing, constructing, servicing and maintaining approved coastal zone management and/or restoration projects. Utilization of any and all rights derived under this lease by the mineral lessee, its agents, successors or assigns, shall not interfere with nor hinder the reasonable surface use by the Department of Natural Resources, its Offices or Commissions, as herein above reserved.

NOTE: The Department of Wildlife and Fisheries has designated certain areas in the coastal waters of the State of Louisiana as Oyster Seed Bed Areas. The exact location of those Seed Bed Areas must be obtained from the Department of Wildlife and Fisheries and any work done under a mineral lease from the State of Louisiana may necessarily be conducted in conformity with the rules and regulations promulgated by the said Department of Wildlife and Fisheries for Oyster Seed Bed Areas.

Applicant: South Louisiana Minerals, Inc.

Bidder	Cash Payment	Price/Acre	Rental	Oil	Gas	Other



ST BERNARD PARISH

SL 16158

BLOCK CS0072

P.O.B.
X=2,598,475.00
Y=388,705.00



T15S - R18E

CHANDELEUR SOUND AREA

T15S - R17E



TRACT 36454 - Vermilion Parish, Louisiana

All of the lands now or formerly constituting the beds and bottoms of all water bodies of every nature and description the title of which vests in the State of Louisiana, together with all islands arising therein and other lands formed by accretion or by reliction, where allowed by law, excepting tax adjudicated lands, and not presently under mineral lease on July 14, 2004, situated in Vermilion Parish, Louisiana, and more particularly described as follows: Beginning at a point having Coordinates of X = 1,726,500.00 and Y = 399,350.00; thence East 12,358.00 feet to a point having Coordinates of X = 1,738,858.00 and Y = 399,350.00; thence South 5,450.00 feet to the Northeast corner of State Lease No. 17826 having Coordinates of X = 1,738,858.00 and Y = 393,900.00; thence West 2,658.00 feet along the North boundary of said State Lease No. 17826 to the Southwest corner of State Lease No. 17226 having Coordinates of X = 1,736,200.00 and Y = 393,900.00; thence North 65 degrees 03 minutes 22 seconds East 2,646.90 feet along the South boundary line of said State Lease No. 17226 to its Southeast corner having Coordinates of X = 1,738,600.00 and Y = 395,016.28; thence North 733.72 feet along the East boundary line of said State Lease No. 17226 to its Northeast corner having Coordinates of X = 1,738,600.00 and Y = 395,750.00; thence West 147.59 feet along the North boundary line of said State Lease No. 17226 to its intersection with the East boundary line of the Compromise Area having Coordinates of X = 1,738,452.41 and Y = 395,750.00; thence along said East boundary line the following courses and distances to wit: North 08 degrees 20 minutes 59 seconds East 765.27 feet, North 06 degrees 55 minutes 36 seconds West 310.74 feet, North 45 degrees 35 minutes 04 seconds East 125.60 feet, North 17 degrees 39 minutes 11 seconds West 482.18 feet, North 24 degrees 37 minutes 46 seconds West 477.32 feet, North 24 degrees 37 minutes 46 seconds West 502.64 feet, North 46 degrees 31 minutes 42 seconds West 500.00 feet, North 44 degrees 30 minutes 19 seconds West 300.30 feet, and North 56 degrees 33 minutes 26 seconds West 160.42 feet to a point on the East boundary line of State Lease No. 16995 having Coordinates of X = 1,737,353.93 and Y = 398,900.39; thence North 12 degrees 59 minutes 41 seconds East 204.85 feet along the East boundary line of said State Lease No. 16995 to a point having Coordinates of X = 1,737,400.00 and Y = 399,100.00; thence South 43 degrees 52 minutes 36 seconds West 195.17 feet along the West boundary of said State Lease No. 16995 to a point on the boundary line of said Compromise Area having Coordinates of X = 1,737,264.72 and Y = 398,959.31; thence along said boundary the following courses and distances to wit: North 56 degrees 33 minutes 26 seconds West 462.37 feet, South 34 degrees 13 minutes 00 seconds West 1,555.46 feet and North 70 degrees 44 minutes 42 seconds West 2,505.50 feet to a point having Coordinates of X = 1,733,638.89 and Y = 398,754.14; thence North 70 degrees 44 minutes 42 seconds West 1500.00 feet to a point having Coordinates of X = 1,732,222.80 and Y = 399,248.80; thence South 4348.80 feet to a point having Coordinates of X = 1,732,222.80 and Y = 394,900.00: thence West 363.20 feet to the Southwest corner of State Lease No. 17208 having Coordinates of X = 1,732,586.00 and Y = 394,900.00; thence South 47 degrees 45 minutes 14 seconds East 559.26

feet to the Southeast corner of said State Lease No. 17208 and a point on the West boundary line of State Lease No. 16995 having Coordinates of X = 1,733,000.00 and Y = 394,524.00; thence South 43 degrees 52 minutes 36 seconds West 865.66 feet to the Southwest corner of said State Lease No. 16995 and a point on the North boundary line of State Lease No. 18074 having Coordinates of X = 1,732,400.00 and Y = 393,900.00; thence along the boundary line of State Lease No. 18074 the following courses and distances to wit: West 2,970.00 feet, South 1,200.00 feet, South 46 degrees 45 minutes 59 seconds East 1,605.89 feet, South 2,140.00 feet, and East 2,576.00 feet to a point on the West boundary line of State Lease No. 17832 having Coordinates of X = 1,733,176.00 and Y = 389,460.00; thence South 1,407.00 feet along the West boundary of said State Lease No. 17832 to its Southwest corner, also being the Northwest corner of State Lease No. 17827 having Coordinates of X = 1,733,176.00 and Y = 388,053.00; thence South 2,061.10 feet along the West boundary line of said State Lease No. 17827 South to its Southwest corner having Coordinates of X = 1,733,176.00 and Y = 385,991.90; thence North 89 degrees 31 minutes 39 seconds West 6,676.22 feet to a point having Coordinates of X = 1,726,500.00 and Y = 386,046.94; thence North 13,303.06 feet to the point of beginning, containing approximately **1,047 acres**, all as more particularly outlined on a plat on file in the Office of Mineral Resources, Department of Natural Resources. All bearings, distances and coordinates are based on Louisiana Coordinate System of 1927, (North or South Zone), where applicable.

NOTE: The above description of the Tract nominated for lease has been provided and corrected, where required, exclusively by the nomination party. Any mineral lease selected from this Tract and awarded by the Louisiana State Mineral Board shall be without warranty of any kind, either express, implied, or statutory, including, but not limited to, the implied warranties of merchantability and fitness for a particular purpose. Should the mineral lease awarded by the Louisiana State Mineral Board be subsequently modified, cancelled or abrogated due to the existence of conflicting leases, operating agreements, private claims or other future obligations or conditions which may affect all or any portion of the leased Tract, it shall not relieve the Lessee of the obligation to pay any bonus due thereon to the Louisiana State Mineral Board, nor shall the Louisiana State Mineral Board be obligated to refund any consideration paid by the Lessor prior to such modification, cancellation, or abrogation, including, but not limited to, bonuses, rentals and royalties.

NOTE: The State of Louisiana does hereby reserve, and this lease shall be subject to, the imprescriptible right of surface use in the nature of a servitude in favor of the Department of Natural Resources, including its Offices and Commissions, for the sole purpose of implementing, constructing, servicing and maintaining approved coastal zone management and/or restoration projects. Utilization of any and all rights derived under this lease by the mineral lessee, its agents, successors or assigns, shall not interfere with nor hinder the reasonable surface use by the

Department of Natural Resources, its Offices or Commissions, as herein above reserved.

NOTE: The Department of Wildlife and Fisheries has designated certain areas in the coastal waters of the State of Louisiana as Oyster Seed Bed Areas. The exact location of those Seed Bed Areas must be obtained from the Department of Wildlife and Fisheries and any work done under a mineral lease from the State of Louisiana may necessarily be conducted in conformity with the rules and regulations promulgated by the said Department of Wildlife and Fisheries for Oyster Seed Bed Areas.

Applicant: Jim Rousseau

Bidder	Cash Payment	Price/Acre	Rental	Oil	Gas	Other



P.O.B.
X=1,726,500.00
Y=399,350.00



VERMILION PARISH

T15S - R3E

T15S - R2E

SL 17226

SL 17208

SL 16995

SL 18075

SL 17833

SL 17826

SL 17827

SL 17832

SL 18074

VERMILION BAY

TRACT 36455 - Vermilion Parish, Louisiana

All of the lands now or formerly constituting the beds and bottoms of all water bodies of every nature and description the title of which vests in the State of Louisiana, together with all islands arising therein and other lands formed by accretion or by reliction, where allowed by law, excepting tax adjudicated lands, and not presently under mineral lease on July 14, 2004, situated in Vermilion Parish, Louisiana, and more particularly described as follows: Beginning at a point having Coordinates of X = 1,738,858.00 and Y = 399,350.00; thence East 11,042.00 feet to a point having Coordinates of X = 1,749,900.00 and Y = 399,350.00; thence South 13,496.00 feet to a point having Coordinates of X = 1,749,900.00 and Y = 385,854.00; thence North 89 degrees 31 minutes 39 seconds West 8,974.30 feet to the Southeast corner of State Lease No. 17827 having Coordinates of X = 1,740,926.00 and Y = 385,928.00; thence North 00 degrees 30 minutes 21 seconds West 2,125.08 feet along the East boundary line of said State Lease No. 17827 to its Northeast corner, said point also being the Southeast corner of State Lease No. 17833 having Coordinates of X = 1,740,907.24 and Y = 388,053.00; thence North 00 degrees 30 minutes 21 seconds West 2,179.18 feet along the East boundary line of said State Lease No. 17833 to its Northeast corner, said point also being the Southwest corner of State Lease No. 18075, having Coordinates of X = 1,740,888.00 and Y = 390,232.10; thence North 1,857.89 feet along the East boundary line of said State Lease No. 18075 to its Northeast corner, having Coordinates of X = 1,740,888.00 and Y = 392,090.00; thence West 2,030.00 feet along the North boundary line of said State Lease No. 18075 to its Northwest corner, also being a point on the East boundary line of State Lease No. 17826 having Coordinates of X = 1,738,858.00 and Y = 392,090.00; thence North 1,810.00 feet along the East boundary line of said State Lease No. 17826 to its Northeast corner, having Coordinates of X = 1,738,858.00 and Y = 393,900.00; thence North 5,450.00 feet to the point of beginning, **LESS AND EXCEPT** the Compromise Area further being described as follows: Beginning at a point having Coordinates of X = 1,739,612.38 and Y = 394,717.00; thence North 34 degrees 37 minutes 00 seconds East 687.70 feet to a point having Coordinates of X = 1,740,003.05 and Y = 395,282.96; thence North 72 degrees 37 minutes 00 seconds East 655.10 feet to a point having Coordinates of X = 1,740,628.23 and Y = 395,478.68; thence North 06 degrees 37 minutes 00 seconds East 2,640.70 feet to a point having Coordinates of X = 1,740,932.50 and Y = 398,101.79; thence South 87 degrees 59 minutes 00 seconds East 1,886.70 feet to a point having Coordinates of X = 1,742,818.03 and Y = 398,035.40; thence South 12 degrees 39 minutes 41 seconds East 3,445.18 feet to a point having Coordinates of X = 1,743,573.18 and Y = 394,674.00; thence South 77 degrees 50 minutes 00 seconds West 364.87 feet to a point having Coordinates of X = 1,743,216.51 and Y = 394,597.10; thence South 81 degrees 00 minutes 00 seconds West 505.00 feet to a point having Coordinates of X = 1,742,717.72 and Y = 394,518.10; thence South 84 degrees 20 minutes 00 seconds West 500.00 feet to a point having Coordinates of X = 1,742,220.17 and Y = 394,468.73; thence South 87

degrees 20 minutes 00 seconds West 505.00 feet to a point having Coordinates of X = 1,741,715.71 and Y = 394,445.23; thence North 86 degrees 00 minutes 00 seconds West 525.00 feet to a point having Coordinates of X = 1,741,191.99 and Y = 394,481.85; thence North 83 degrees 30 minutes 00 seconds West 505.00 feet to a point having Coordinates of X = 1,740,690.24 and Y = 394,539.02; thence North 82 degrees 00 minutes 00 seconds West 505.00 feet to a point having Coordinates of X = 1,740,190.15 and Y = 394,609.30; thence North 80 degrees 00 minutes 00 seconds West 500.00 feet to a point having Coordinates of X = 1,739,697.75 and Y = 394,696.13; thence North 76 degrees 15 minutes 37 seconds West 87.88 feet to the point of beginning of the Compromise Area; containing approximately **2,014 acres**, all as more particularly outlined on a plat on file in the Office of Mineral Resources, Department of Natural Resources. All bearings, distances and coordinates are based on Louisiana Coordinate System of 1927, (North or South Zone), where applicable.

NOTE: The above description of the Tract nominated for lease has been provided and corrected, where required, exclusively by the nomination party. Any mineral lease selected from this Tract and awarded by the Louisiana State Mineral Board shall be without warranty of any kind, either express, implied, or statutory, including, but not limited to, the implied warranties of merchantability and fitness for a particular purpose. Should the mineral lease awarded by the Louisiana State Mineral Board be subsequently modified, cancelled or abrogated due to the existence of conflicting leases, operating agreements, private claims or other future obligations or conditions which may affect all or any portion of the leased Tract, it shall not relieve the Lessee of the obligation to pay any bonus due thereon to the Louisiana State Mineral Board, nor shall the Louisiana State Mineral Board be obligated to refund any consideration paid by the Lessor prior to such modification, cancellation, or abrogation, including, but not limited to, bonuses, rentals and royalties.

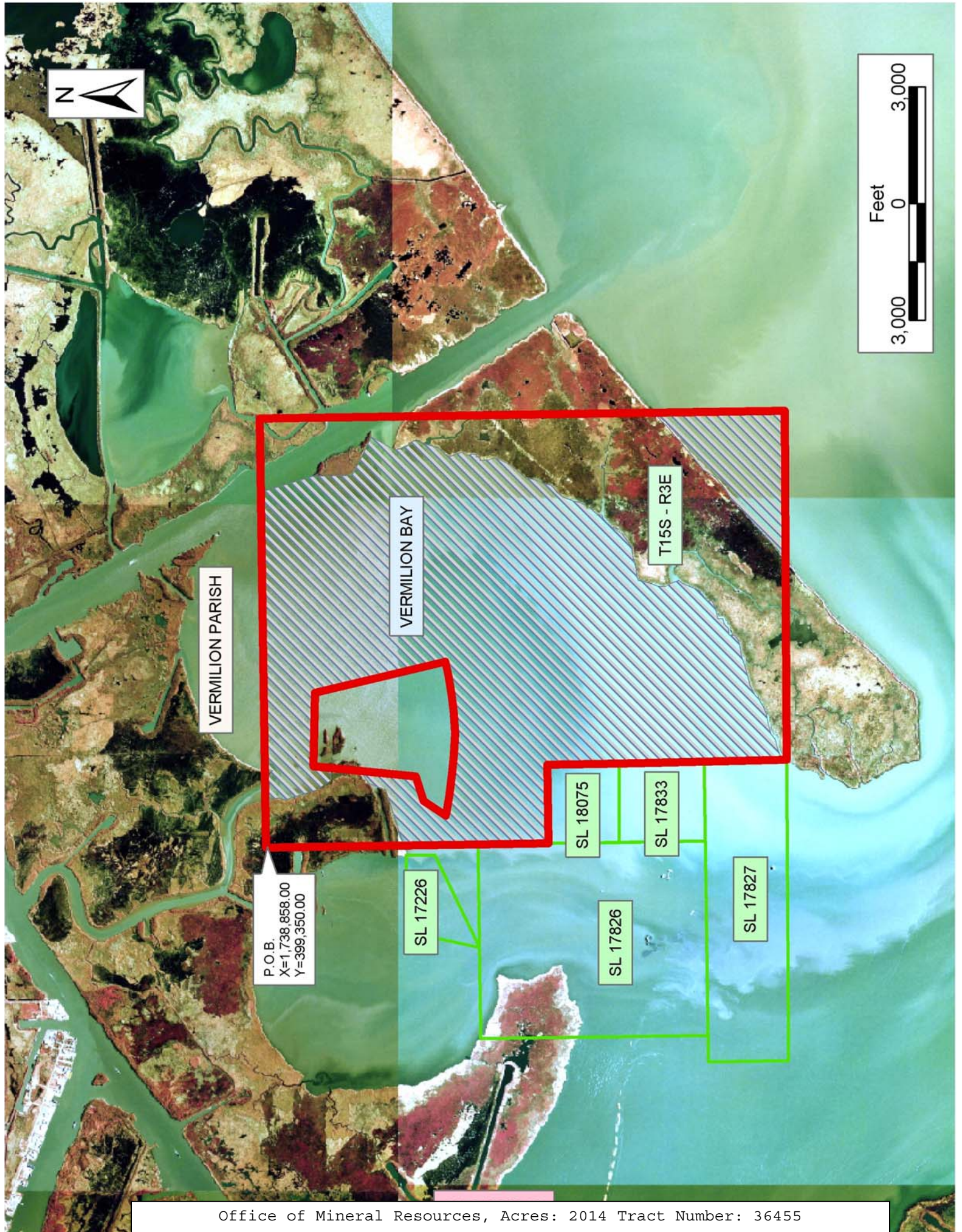
NOTE: The State of Louisiana does hereby reserve, and this lease shall be subject to, the imprescriptible right of surface use in the nature of a servitude in favor of the Department of Natural Resources, including its Offices and Commissions, for the sole purpose of implementing, constructing, servicing and maintaining approved coastal zone management and/or restoration projects. Utilization of any and all rights derived under this lease by the mineral lessee, its agents, successors or assigns, shall not interfere with nor hinder the reasonable surface use by the Department of Natural Resources, its Offices or Commissions, as herein above reserved.

NOTE: The Department of Wildlife and Fisheries has designated certain areas in the coastal waters of the State of Louisiana as Oyster Seed Bed Areas. The exact location of those Seed Bed Areas must be obtained from the Department of Wildlife and Fisheries and any work done under a mineral lease from the State of Louisiana may necessarily be conducted in

conformity with the rules and regulations promulgated by the said Department of Wildlife and Fisheries for Oyster Seed Bed Areas.

Applicant: Jim Rousseau

Bidder	Cash Payment	Price/Acre	Rental	Oil	Gas	Other



TRACT 36456 - Vermilion Parish, Louisiana

All of the lands now or formerly constituting the beds and bottoms of all water bodies of every nature and description the title of which vests in the State of Louisiana, together with all islands arising therein and other lands formed by accretion or by reliction, where allowed by law, excepting tax adjudicated lands, and not presently under mineral lease on July 14, 2004, situated in Vermilion Parish, Louisiana, and more particularly described as follows: Beginning at a point having Coordinates of X = 1,749,900.00 and Y = 399,350.00; thence East 12,340.00 feet to a point having Coordinates X = 1,762,240.00 and Y = 399,350.00; thence South 13,597.74 feet to a point having Coordinates X = 1,762,240.00 and Y = 385,752.26; thence North 89 degrees 31 minutes 39 seconds West 12,340.42 feet to a point having Coordinates X = 1,749,900.00 and Y = 385,854.00; thence North 13,496.00 feet to the point of beginning, containing approximately **2,237 acres**, all as more particularly outlined on a plat on file in the Office of Mineral Resources, Department of Natural Resources. All bearings, distances and coordinates are based on Louisiana Coordinate System of 1927, (North or South Zone), where applicable.

NOTE: The above description of the Tract nominated for lease has been provided and corrected, where required, exclusively by the nomination party. Any mineral lease selected from this Tract and awarded by the Louisiana State Mineral Board shall be without warranty of any kind, either express, implied, or statutory, including, but not limited to, the implied warranties of merchantability and fitness for a particular purpose. Should the mineral lease awarded by the Louisiana State Mineral Board be subsequently modified, cancelled or abrogated due to the existence of conflicting leases, operating agreements, private claims or other future obligations or conditions which may affect all or any portion of the leased Tract, it shall not relieve the Lessee of the obligation to pay any bonus due thereon to the Louisiana State Mineral Board, nor shall the Louisiana State Mineral Board be obligated to refund any consideration paid by the Lessor prior to such modification, cancellation, or abrogation, including, but not limited to, bonuses, rentals and royalties.

NOTE: The State of Louisiana does hereby reserve, and this lease shall be subject to, the imprescriptible right of surface use in the nature of a servitude in favor of the Department of Natural Resources, including its Offices and Commissions, for the sole purpose of implementing, constructing, servicing and maintaining approved coastal zone management and/or restoration projects. Utilization of any and all rights derived under this lease by the mineral lessee, its agents, successors or assigns, shall not interfere with nor hinder the reasonable surface use by the Department of Natural Resources, its Offices or Commissions, as herein above reserved.

NOTE: The Department of Wildlife and Fisheries has designated certain areas in the coastal waters of the State of Louisiana as Oyster Seed Bed Areas. The exact location of those Seed Bed Areas must be obtained from

the Department of Wildlife and Fisheries and any work done under a mineral lease from the State of Louisiana may necessarily be conducted in conformity with the rules and regulations promulgated by the said Department of Wildlife and Fisheries for Oyster Seed Bed Areas.

Applicant: Jim Rousseau

Bidder	Cash Payment	Price/Acre	Rental	Oil	Gas	Other



T15S - R4E

VERMILION PARISH

T15S - R3E

P.O.B.
X=1,749,900.00
Y=399,350.00

VERMILION BAY



TRACT 36457 - Vermilion Parish, Louisiana

All of the lands now or formerly constituting the beds and bottoms of all water bodies of every nature and description the title of which vests in the State of Louisiana, together with all islands arising therein and other lands formed by accretion or by reliction, where allowed by law, excepting tax adjudicated lands, and not presently under mineral lease on July 14, 2004, situated in Vermilion Parish, Louisiana, and more particularly described as follows: Beginning at a point having Coordinates of X = 1,732,222.80 and Y = 399,248.80; thence South 70 degrees 44 minutes 42 seconds East 1,500.00 feet to a point having Coordinates of X = 1,733,638.89 and Y = 398,754.14; thence South 00 degrees 24 minutes 13 seconds West 2,779.57 feet to a point on the westerly boundary of State lease No. 17208, having Coordinates of X = 1,733,619.31 and Y = 395,974.64; thence South 43 degrees 52 minutes 36 seconds West 1,490.83 feet along the westerly boundary of said State Lease No. 17208 to it's Southwest corner having Coordinates of X = 1,732,586.00 and Y = 394,900.00; thence West 363.20 feet to a point having Coordinates of X = 1,732,222.80 and Y = 394,900.00; thence North 4,348.80 feet to the point of beginning, containing approximately 73.0 gross acres and a net acreage of **29.2 acres**, all as more particularly outlined on a plat on file in the Office of Mineral Resources, Department of Natural Resources. All bearings, distances and coordinates are based on Louisiana Coordinate System of 1927, (North or South Zone), where applicable.

NOTE: The above description of the Tract nominated for lease has been provided and corrected, where required, exclusively by the nomination party. Any mineral lease selected from this Tract and awarded by the Louisiana State Mineral Board shall be without warranty of any kind, either express, implied, or statutory, including, but not limited to, the implied warranties of merchantability and fitness for a particular purpose. Should the mineral lease awarded by the Louisiana State Mineral Board be subsequently modified, cancelled or abrogated due to the existence of conflicting leases, operating agreements, private claims or other future obligations or conditions which may affect all or any portion of the leased Tract, it shall not relieve the Lessee of the obligation to pay any bonus due thereon to the Louisiana State Mineral Board, nor shall the Louisiana State Mineral Board be obligated to refund any consideration paid by the Lessor prior to such modification, cancellation, or abrogation, including, but not limited to, bonuses, rentals and royalties.

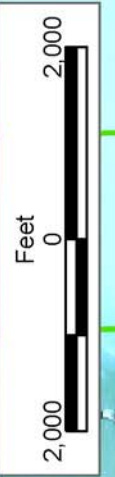
NOTE: The State of Louisiana does hereby reserve, and this lease shall be subject to, the imprescriptible right of surface use in the nature of a servitude in favor of the Department of Natural Resources, including its Offices and Commissions, for the sole purpose of implementing, constructing, servicing and maintaining approved coastal zone management and/or restoration projects. Utilization of any and all rights derived under this lease by the mineral lessee, its agents, successors or assigns, shall not interfere with nor hinder the reasonable surface use by the

Department of Natural Resources, its Offices or Commissions, as herein above reserved.

NOTE: The Department of Wildlife and Fisheries has designated certain areas in the coastal waters of the State of Louisiana as Oyster Seed Bed Areas. The exact location of those Seed Bed Areas must be obtained from the Department of Wildlife and Fisheries and any work done under a mineral lease from the State of Louisiana may necessarily be conducted in conformity with the rules and regulations promulgated by the said Department of Wildlife and Fisheries for Oyster Seed Bed Areas.

Applicant: Jim Rousseau

Bidder	Cash Payment	Price/Acre	Rental	Oil	Gas	Other



LITTLE WHITE LAKE

S.L. 17208

P.O.B.
X=1,732,222.80
Y=399,248.80

T15S - R3E

VERMILION PARISH

VERMILION BAY



TR 04070117

TRACT 36458 - Vermilion Parish, Louisiana

All of the lands now or formerly constituting the beds and bottoms of all water bodies of every nature and description the title of which vests in the State of Louisiana, together with all islands arising therein and other lands formed by accretion or by reliction, where allowed by law, excepting tax adjudicated lands, and not presently under mineral lease on July 14, 2004, situated in Vermilion Parish, Louisiana, and more particularly described as follows: Beginning at a point having Coordinates of X = 1,733,638.88 and Y = 398,754.13; thence South 70 degrees 44 minutes 42 seconds East 2,103.64 feet to the Northwest corner of State Lease No. 17208 having Coordinates of X = 1,735,624.85 and Y = 398,060.42; thence South 43 degrees 52 minutes 36 seconds West 2,149.89 feet along the West boundary line of said State Lease No. 17208 to a point having Coordinates of X = 1,734,134.74 and Y = 396,510.70; thence North 70 degrees 56 minutes 56 seconds West 540.00 feet to a point having Coordinates of X = 1,733,624.32 and Y = 396,686.96; thence North 00 degrees 24 minutes 13 seconds East 2,067.23 feet to the point of beginning, containing approximately **59 gross acres** and **47.2 net acres**, all as more particularly outlined on a plat on file in the Office of Mineral Resources, Department of Natural Resources. All bearings, distances and coordinates are based on Louisiana Coordinate System of 1927, (North or South Zone), where applicable.

NOTE: The above description of the Tract nominated for lease has been provided and corrected, where required, exclusively by the nomination party. Any mineral lease selected from this Tract and awarded by the Louisiana State Mineral Board shall be without warranty of any kind, either express, implied, or statutory, including, but not limited to, the implied warranties of merchantability and fitness for a particular purpose. Should the mineral lease awarded by the Louisiana State Mineral Board be subsequently modified, cancelled or abrogated due to the existence of conflicting leases, operating agreements, private claims or other future obligations or conditions which may affect all or any portion of the leased Tract, it shall not relieve the Lessee of the obligation to pay any bonus due thereon to the Louisiana State Mineral Board, nor shall the Louisiana State Mineral Board be obligated to refund any consideration paid by the Lessor prior to such modification, cancellation, or abrogation, including, but not limited to, bonuses, rentals and royalties.

NOTE: The State of Louisiana does hereby reserve, and this lease shall be subject to, the imprescriptible right of surface use in the nature of a servitude in favor of the Department of Natural Resources, including its Offices and Commissions, for the sole purpose of implementing, constructing, servicing and maintaining approved coastal zone management and/or restoration projects. Utilization of any and all rights derived under this lease by the mineral lessee, its agents, successors or assigns, shall not interfere with nor hinder the reasonable surface use by the Department of Natural Resources, its Offices or Commissions, as herein above reserved.

NOTE: The Department of Wildlife and Fisheries has designated certain areas in the coastal waters of the State of Louisiana as Oyster Seed Bed Areas. The exact location of those Seed Bed Areas must be obtained from the Department of Wildlife and Fisheries and any work done under a mineral lease from the State of Louisiana may necessarily be conducted in conformity with the rules and regulations promulgated by the said Department of Wildlife and Fisheries for Oyster Seed Bed Areas.

Applicant: Jim Rousseau

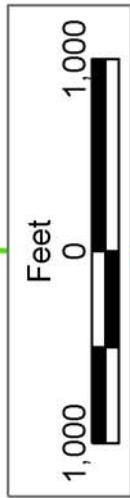
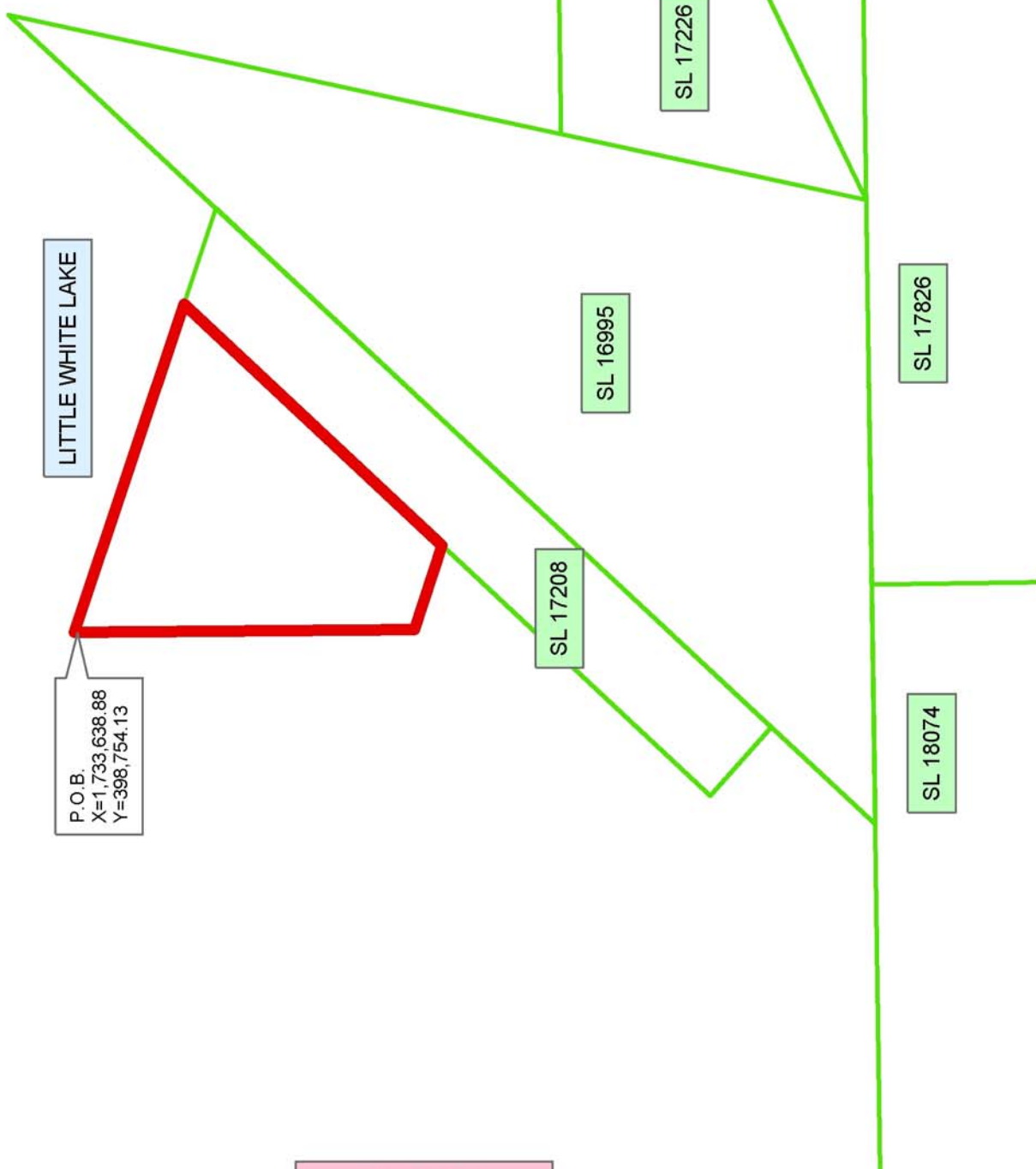
Bidder	Cash Payment	Price/Acre	Rental	Oil	Gas	Other



VERMILION PARISH

LITTLE WHITE LAKE

P.O.B.
X=1,733,638.88
Y=398,754.13



TRACT 36459 - Vermilion Parish, Louisiana

All of the lands now or formerly constituting the beds and bottoms of all water bodies of every nature and description the title of which vests in the State of Louisiana, together with all islands arising therein and other lands formed by accretion or by reliction, where allowed by law, excepting tax adjudicated lands, and not presently under mineral lease on July 14, 2004, situated in Vermilion Parish, Louisiana, and more particularly described as follows: Beginning at a point having Coordinates of X = 1,736,878.90 and Y = 399,214.13; thence South 56 degrees 33 minutes 26 seconds East 462.37 feet to a point on the West boundary line of State Lease No. 16995 having Coordinates of X = 1,737,264.72 and Y = 398,959.31; thence South 43 degrees 52 minutes 36 seconds West 1,528.39 feet along the West boundary line of said State Lease No. 16995 to the Northeast corner of State Lease No. 17208 having Coordinates of X = 1,736,205.38 and Y = 397,857.60; thence North 70 degrees 44 minutes 13 seconds West 213.08 feet along the North boundary line of State Lease No. 17208 to a point having Coordinates of X = 1,736,004.23 and Y = 397,927.89; thence North 34 degrees 13 minutes 00 seconds East 1,555.46 feet to the point of beginning, containing approximately **12 gross acres** and **9.6 net acres**, all as more particularly outlined on a plat on file in the Office of Mineral Resources, Department of Natural Resources. All bearings, distances and coordinates are based on Louisiana Coordinate System of 1927, (North or South Zone), where applicable.

NOTE: The above description of the Tract nominated for lease has been provided and corrected, where required, exclusively by the nomination party. Any mineral lease selected from this Tract and awarded by the Louisiana State Mineral Board shall be without warranty of any kind, either express, implied, or statutory, including, but not limited to, the implied warranties of merchantability and fitness for a particular purpose. Should the mineral lease awarded by the Louisiana State Mineral Board be subsequently modified, cancelled or abrogated due to the existence of conflicting leases, operating agreements, private claims or other future obligations or conditions which may affect all or any portion of the leased Tract, it shall not relieve the Lessee of the obligation to pay any bonus due thereon to the Louisiana State Mineral Board, nor shall the Louisiana State Mineral Board be obligated to refund any consideration paid by the Lessor prior to such modification, cancellation, or abrogation, including, but not limited to, bonuses, rentals and royalties.

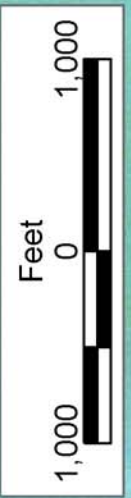
NOTE: The State of Louisiana does hereby reserve, and this lease shall be subject to, the imprescriptible right of surface use in the nature of a servitude in favor of the Department of Natural Resources, including its Offices and Commissions, for the sole purpose of implementing, constructing, servicing and maintaining approved coastal zone management and/or restoration projects. Utilization of any and all rights derived under this lease by the mineral lessee, its agents, successors or assigns, shall not interfere with nor hinder the reasonable surface use by the

Department of Natural Resources, its Offices or Commissions, as herein above reserved.

NOTE: The Department of Wildlife and Fisheries has designated certain areas in the coastal waters of the State of Louisiana as Oyster Seed Bed Areas. The exact location of those Seed Bed Areas must be obtained from the Department of Wildlife and Fisheries and any work done under a mineral lease from the State of Louisiana may necessarily be conducted in conformity with the rules and regulations promulgated by the said Department of Wildlife and Fisheries for Oyster Seed Bed Areas.

Applicant: Jim Rousseau

Bidder	Cash Payment	Price/Acre	Rental	Oil	Gas	Other



VERMILION PARISH

LITTLE WHITE LAKE

P.O.B.
X=1,736,878.90
Y=399,214.13

SL 17208

SL 16995

SL 17226

TRACT 36460 - Vermilion Parish, Louisiana

All of the lands now or formerly constituting the beds and bottoms of all water bodies of every nature and description the title of which vests in the State of Louisiana, together with all islands arising therein and other lands formed by accretion or by reliction, where allowed by law, excepting tax adjudicated lands, and not presently under mineral lease on July 14, 2004, situated in Vermilion Parish, Louisiana, and more particularly described as follows: Beginning at a point having Coordinates of X = 1,737,353.93 and Y = 398,900.39; thence South 56 degrees 33 minutes 26 seconds East 160.42 feet to a point having Coordinates of X = 1,737,487.80 and Y = 398,811.98; thence South 44 degrees 30 minutes 19 seconds East 300.30 feet to a point having Coordinates of X = 1,737,698.30 and Y = 398,597.81; thence South 46 degrees 31 minutes 42 seconds East 500.00 feet to a point having Coordinates of X = 1,738,061.16 and Y = 398,253.82; thence South 24 degrees 37 minutes 46 seconds East 502.64 feet to a point having Coordinates of X = 1,738,270.63 and Y = 397,796.90; thence South 24 degrees 37 minutes 46 seconds East 477.32 feet to a point having Coordinates of X = 1,738,469.55 and Y = 397,363.01; thence South 17 degrees 39 minutes 11 seconds East 482.18 feet to a point having Coordinates of X = 1,738,615.77 and Y = 396,903.54; thence South 45 degrees 35 minutes 04 seconds West 125.60 feet to a point having Coordinates of X = 1,738,526.06 and Y = 396,815.63; thence South 06 degrees 55 minutes 36 seconds East 310.74 feet to a point having Coordinates of X = 1,738,563.54 and Y = 396,507.16; thence South 08 degrees 20 minutes 59 seconds West 765.27 feet to a point on the North Boundary line of State Lease No. 17226 having Coordinates of X = 1,738,452.41 and Y = 395,750.00; thence West 1,825.48 feet along said North boundary line of said State Lease No. 17226 to its Northwest corner, also being a point on the East boundary line of State Lease No. 16995 having Coordinates of X = 1,736,626.92 and Y = 395,750.00; thence North 12 degrees 59 minutes 41 seconds East 3,233.19 feet along said East boundary line of said State Lease No. 16995 to the point of beginning, containing approximately **94 gross acres** and **75.2 net acres**, all as more particularly outlined on a plat on file in the Office of Mineral Resources, Department of Natural Resources. All bearings, distances and coordinates are based on Louisiana Coordinate System of 1927, (North or South Zone), where applicable.

NOTE: The above description of the Tract nominated for lease has been provided and corrected, where required, exclusively by the nomination party. Any mineral lease selected from this Tract and awarded by the Louisiana State Mineral Board shall be without warranty of any kind, either express, implied, or statutory, including, but not limited to, the implied warranties of merchantability and fitness for a particular purpose. Should the mineral lease awarded by the Louisiana State Mineral Board be subsequently modified, cancelled or abrogated due to the existence of conflicting leases, operating agreements, private claims or other future obligations or conditions which may affect all or any portion of the leased Tract, it shall not relieve the Lessee of the obligation to

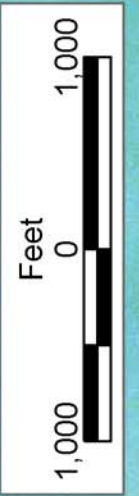
pay any bonus due thereon to the Louisiana State Mineral Board, nor shall the Louisiana State Mineral Board be obligated to refund any consideration paid by the Lessor prior to such modification, cancellation, or abrogation, including, but not limited to, bonuses, rentals and royalties.

NOTE: The State of Louisiana does hereby reserve, and this lease shall be subject to, the imprescriptible right of surface use in the nature of a servitude in favor of the Department of Natural Resources, including its Offices and Commissions, for the sole purpose of implementing, constructing, servicing and maintaining approved coastal zone management and/or restoration projects. Utilization of any and all rights derived under this lease by the mineral lessee, its agents, successors or assigns, shall not interfere with nor hinder the reasonable surface use by the Department of Natural Resources, its Offices or Commissions, as herein above reserved.

NOTE: The Department of Wildlife and Fisheries has designated certain areas in the coastal waters of the State of Louisiana as Oyster Seed Bed Areas. The exact location of those Seed Bed Areas must be obtained from the Department of Wildlife and Fisheries and any work done under a mineral lease from the State of Louisiana may necessarily be conducted in conformity with the rules and regulations promulgated by the said Department of Wildlife and Fisheries for Oyster Seed Bed Areas.

Applicant: Jim Rousseau

Bidder	Cash Payment	Price/Acre	Rental	Oil	Gas	Other



P.O.B.
X=1,737,353.93
Y=398,900.39

VERMILION PARISH

LITTLE WHITE LAKE

SL 17208

SL 16995

SL 17226

SL 17826

SL 18074