

TRACT 36441 - Portion of Block 47, Chandeleur Sound Area, St. Bernard Parish, Louisiana

All of the lands now or formerly constituting the beds and bottoms of all water bodies of every nature and description the title of which vests in the State of Louisiana, together with all islands arising therein and other lands formed by accretion or by reliction, where allowed by law, excepting tax adjudicated lands, and not presently under mineral lease on July 14, 2004, situated in St. Bernard Parish, Louisiana, and more particularly described as follows: Beginning at a point within Block 47, Chandeleur Sound Area, having Coordinates of X = 2,594,877.51 and Y = 402,590.21; thence South 2,805.21 feet to a point having Coordinates of X = 2,594,877.51 and Y = 399,785.00; thence West 3,777.51 feet to a point on the West line of said Block 47, also being the most Southerly corner of State Lease No. 15485, having Coordinates of X = 2,591,100.00 and Y = 399,785.00; thence along the Eastern and Northern boundary of said State Lease No. 15485 the following courses: North 53 degrees 06 minutes 20 seconds East 937.80 feet to a point having Coordinates of X = 2,591,850.00 and Y = 400,348.00; North 48 degrees 24 minutes 14 seconds East 1,524.38 feet to a point having Coordinates of X = 2,592,990.00 and Y = 401,360.00; North 40 degrees 14 minutes 11 seconds East 510.88 feet to a point having Coordinates of X = 2,593,320.00 and Y = 401,750.00; North 30 degrees 01 minutes 06 seconds East 259.86 feet to a point having Coordinates of X = 2,593,450.00 and Y = 401,975.00; North 110.00 feet to a point having Coordinates of X = 2,593,450.00 and Y = 402,085.00; North 29 degrees 03 minutes 17 seconds West 154.43 feet to a point having Coordinates of X = 2,593,375.00 and Y = 402,220.00; North 64 degrees 21 minutes 32 seconds West 138.65 feet to a point having Coordinates of X = 2,593,250.01 and Y = 402,279.99; North 81 degrees 34 minutes 19 seconds West 272.95 feet to a point having Coordinates of X = 2,592,980.00 and Y = 402,320.00; North 87 degrees 53 minutes 54 seconds West 545.37 feet to a point having Coordinates of X = 2,592,435.00 and Y = 402,340.00; and South 83 degrees 44 minutes 44 seconds West 1,342.99 feet to its Northwest corner, also being a point on said West line having Coordinates of X = 2,591,100.00 and Y = 402,193.69; thence North 396.52 feet along said West line to a point having Coordinates of X = 2,591,100.00 and Y = 402,590.21; thence East 3,777.51 feet to the point of beginning, containing approximately **161.06 acres**, all as more particularly outlined on a plat on file in the Office of Mineral Resources, Department of Natural Resources. All bearings, distances and coordinates are based on Louisiana Coordinate System of 1927, (North or South Zone), where applicable.

NOTE: The above description of the Tract nominated for lease has been provided and corrected, where required, exclusively by the nomination party. Any mineral lease selected from this Tract and awarded by the Louisiana State Mineral Board shall be without warranty of any kind, either express, implied, or statutory, including, but not limited to, the implied warranties of merchantability and fitness for a particular purpose. Should the mineral lease awarded by the Louisiana State Mineral Board be subsequently modified, cancelled or abrogated due to the

existence of conflicting leases, operating agreements, private claims or other future obligations or conditions which may affect all or any portion of the leased Tract, it shall not relieve the Lessee of the obligation to pay any bonus due thereon to the Louisiana State Mineral Board, nor shall the Louisiana State Mineral Board be obligated to refund any consideration paid by the Lessor prior to such modification, cancellation, or abrogation, including, but not limited to, bonuses, rentals and royalties.

NOTE: The State of Louisiana does hereby reserve, and this lease shall be subject to, the imprescriptible right of surface use in the nature of a servitude in favor of the Department of Natural Resources, including its Offices and Commissions, for the sole purpose of implementing, constructing, servicing and maintaining approved coastal zone management and/or restoration projects. Utilization of any and all rights derived under this lease by the mineral lessee, its agents, successors or assigns, shall not interfere with nor hinder the reasonable surface use by the Department of Natural Resources, its Offices or Commissions, as herein above reserved.

NOTE: The Department of Wildlife and Fisheries has designated certain areas in the coastal waters of the State of Louisiana as Oyster Seed Bed Areas. The exact location of those Seed Bed Areas must be obtained from the Department of Wildlife and Fisheries and any work done under a mineral lease from the State of Louisiana may necessarily be conducted in conformity with the rules and regulations promulgated by the said Department of Wildlife and Fisheries for Oyster Seed Bed Areas.

Applicant: Mineral Services, Inc.

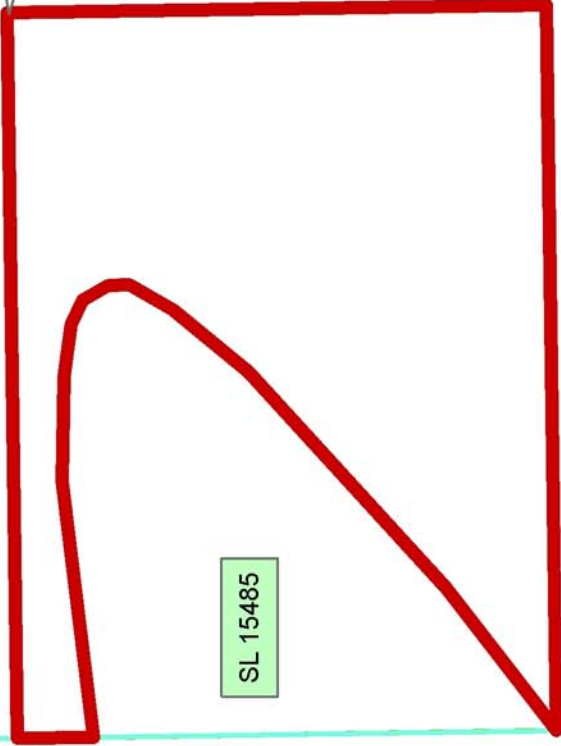
Bidder	Cash Payment	Price/Acre	Rental	Oil	Gas	Other



ST BERNARD PARISH

CHANDELEUR SOUND AREA

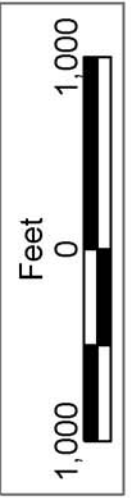
P.O.B.
X=2,594,877.51
Y=402,590.21



SL 15485

LAKE ATHANASIO

BLOCK CS0047



TRACT 36442 - Vermilion Parish, Louisiana

All of the lands now or formerly constituting the beds and bottoms of all water bodies of every nature and description the title of which vests in the State of Louisiana, together with all islands arising therein and other lands formed by accretion or by reliction, where allowed by law, excepting tax adjudicated lands, and not presently under mineral lease on July 14, 2004, situated in Vermilion Parish, Louisiana, and more particularly described as follows: Beginning at a point having Coordinates X = 1,738,858.00 and Y = 408,735.14; thence North 76 degrees 37 minutes 53 seconds East 11,349.54 feet to a point having Coordinates X = 1,749,900.00 and Y = 411,359.33; thence South 12,009.33 feet to a point having Coordinates X = 1,749,900.00 and Y = 399,350.00; thence West 11,042.00 feet to a point having Coordinates X = 1,738,858.00 and Y = 399,350.00; thence North 9,385.14 feet to the point of beginning, **LESS AND EXCEPT** all that portion of State Lease No. 2413 that lies within the above described tract, containing approximately **243 acres**, all as more particularly outlined on a plat on file in the Office of Mineral Resources, Department of Natural Resources. All bearings, distances and coordinates are based on Louisiana Coordinate System of 1927, (North or South Zone), where applicable.

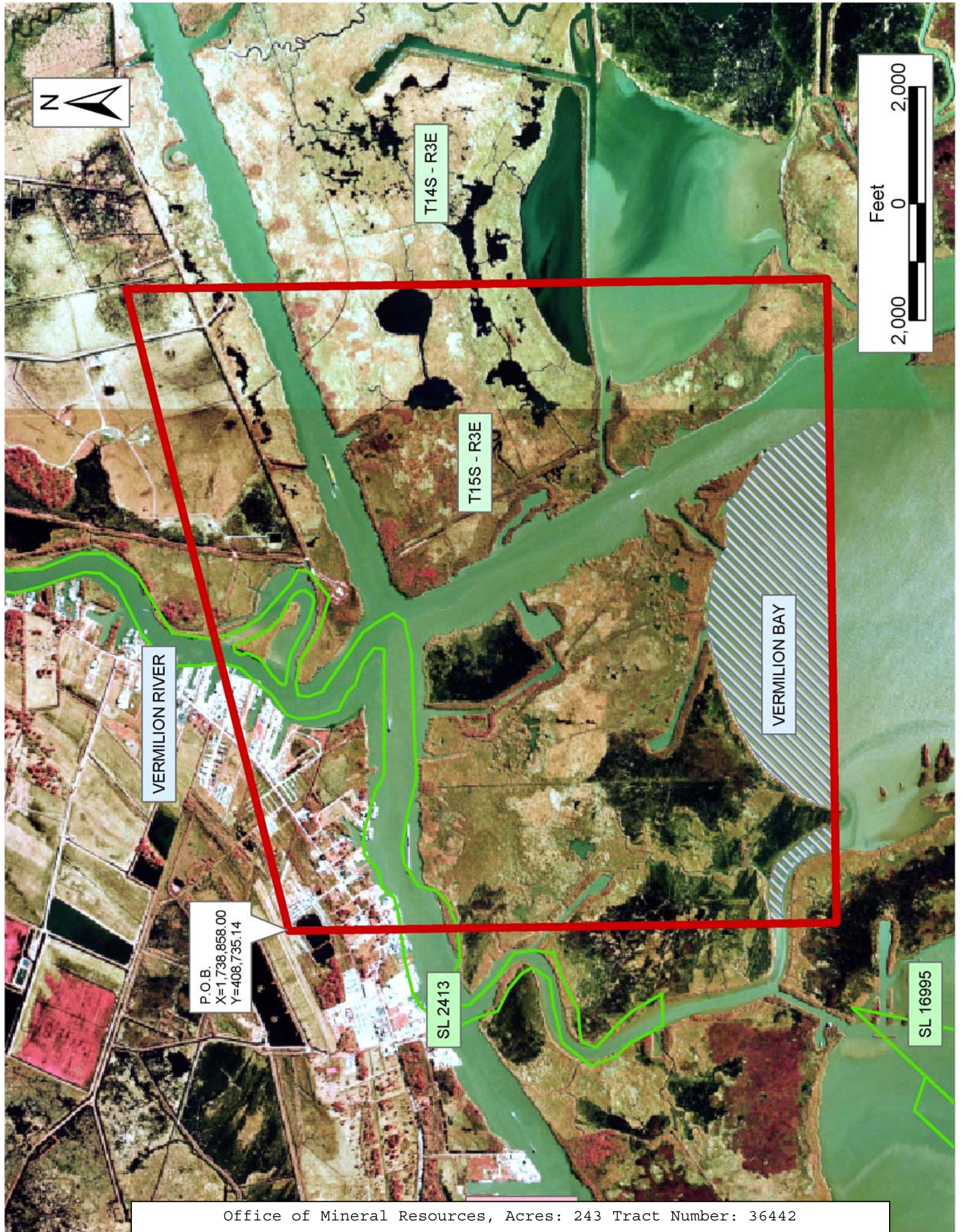
NOTE: The above description of the Tract nominated for lease has been provided and corrected, where required, exclusively by the nomination party. Any mineral lease selected from this Tract and awarded by the Louisiana State Mineral Board shall be without warranty of any kind, either express, implied, or statutory, including, but not limited to, the implied warranties of merchantability and fitness for a particular purpose. Should the mineral lease awarded by the Louisiana State Mineral Board be subsequently modified, cancelled or abrogated due to the existence of conflicting leases, operating agreements, private claims or other future obligations or conditions which may affect all or any portion of the leased Tract, it shall not relieve the Lessee of the obligation to pay any bonus due thereon to the Louisiana State Mineral Board, nor shall the Louisiana State Mineral Board be obligated to refund any consideration paid by the Lessor prior to such modification, cancellation, or abrogation, including, but not limited to, bonuses, rentals and royalties.

NOTE: The State of Louisiana does hereby reserve, and this lease shall be subject to, the imprescriptible right of surface use in the nature of a servitude in favor of the Department of Natural Resources, including its Offices and Commissions, for the sole purpose of implementing, constructing, servicing and maintaining approved coastal zone management and/or restoration projects. Utilization of any and all rights derived under this lease by the mineral lessee, its agents, successors or assigns, shall not interfere with nor hinder the reasonable surface use by the Department of Natural Resources, its Offices or Commissions, as herein above reserved.

NOTE: The Department of Wildlife and Fisheries has designated certain areas in the coastal waters of the State of Louisiana as Oyster Seed Bed Areas. The exact location of those Seed Bed Areas must be obtained from the Department of Wildlife and Fisheries and any work done under a mineral lease from the State of Louisiana may necessarily be conducted in conformity with the rules and regulations promulgated by the said Department of Wildlife and Fisheries for Oyster Seed Bed Areas.

Applicant: Jim Rousseau

Bidder	Cash Payment	Price/Acre	Rental	Oil	Gas	Other



TRACT 36443 - Portion of Block 47, Chandeleur Sound Area, St. Bernard Parish, Louisiana

All of the lands now or formerly constituting the beds and bottoms of all water bodies of every nature and description the title of which vests in the State of Louisiana, together with all islands arising therein and other lands formed by accretion or by reliction, where allowed by law, excepting tax adjudicated lands, and not presently under mineral lease on July 14, 2004, situated in St. Bernard Parish, Louisiana, and more particularly described as follows: Beginning at a point within Block 47, Chandeleur Sound Area, having Coordinates of X = 2,594,877.51 and Y = 396,080.00; thence West 3,597.49 feet to a point having Coordinates of X = 2,591,280.02 and Y = 396,080.00; thence North 02 degrees 02 minutes 40 seconds West 1,151.18 feet to a point having Coordinates of X = 2,591,238.95 and Y = 397,230.45; thence North 02 degrees 01 minutes 10 seconds West 1,732.74 feet to a point having Coordinates of X = 2,591,177.89 and Y = 398,962.11; thence South 76 degrees 12 minutes 02 seconds West 80.21 feet to a point on the West line of said Block 47, having Coordinates of X = 2,591,100.00 and Y = 398,942.98; thence North 842.02 feet along said West line of Block 47 to the most Southerly corner of State Lease No. 15485, having Coordinates of X = 2,591,100.00 and Y = 399,785.00; thence East 3,777.51 feet to a point having Coordinates of X = 2,594,877.51 and Y = 399,785.00; thence South 3,705.00 feet to the point of beginning, containing approximately **226 acres**, all as more particularly outlined on a plat on file in the Office of Mineral Resources, Department of Natural Resources. All bearings, distances and coordinates are based on Louisiana Coordinate System of 1927, (North or South Zone), where applicable.

NOTE: The above description of the Tract nominated for lease has been provided and corrected, where required, exclusively by the nomination party. Any mineral lease selected from this Tract and awarded by the Louisiana State Mineral Board shall be without warranty of any kind, either express, implied, or statutory, including, but not limited to, the implied warranties of merchantability and fitness for a particular purpose. Should the mineral lease awarded by the Louisiana State Mineral Board be subsequently modified, cancelled or abrogated due to the existence of conflicting leases, operating agreements, private claims or other future obligations or conditions which may affect all or any portion of the leased Tract, it shall not relieve the Lessee of the obligation to pay any bonus due thereon to the Louisiana State Mineral Board, nor shall the Louisiana State Mineral Board be obligated to refund any consideration paid by the Lessor prior to such modification, cancellation, or abrogation, including, but not limited to, bonuses, rentals and royalties.

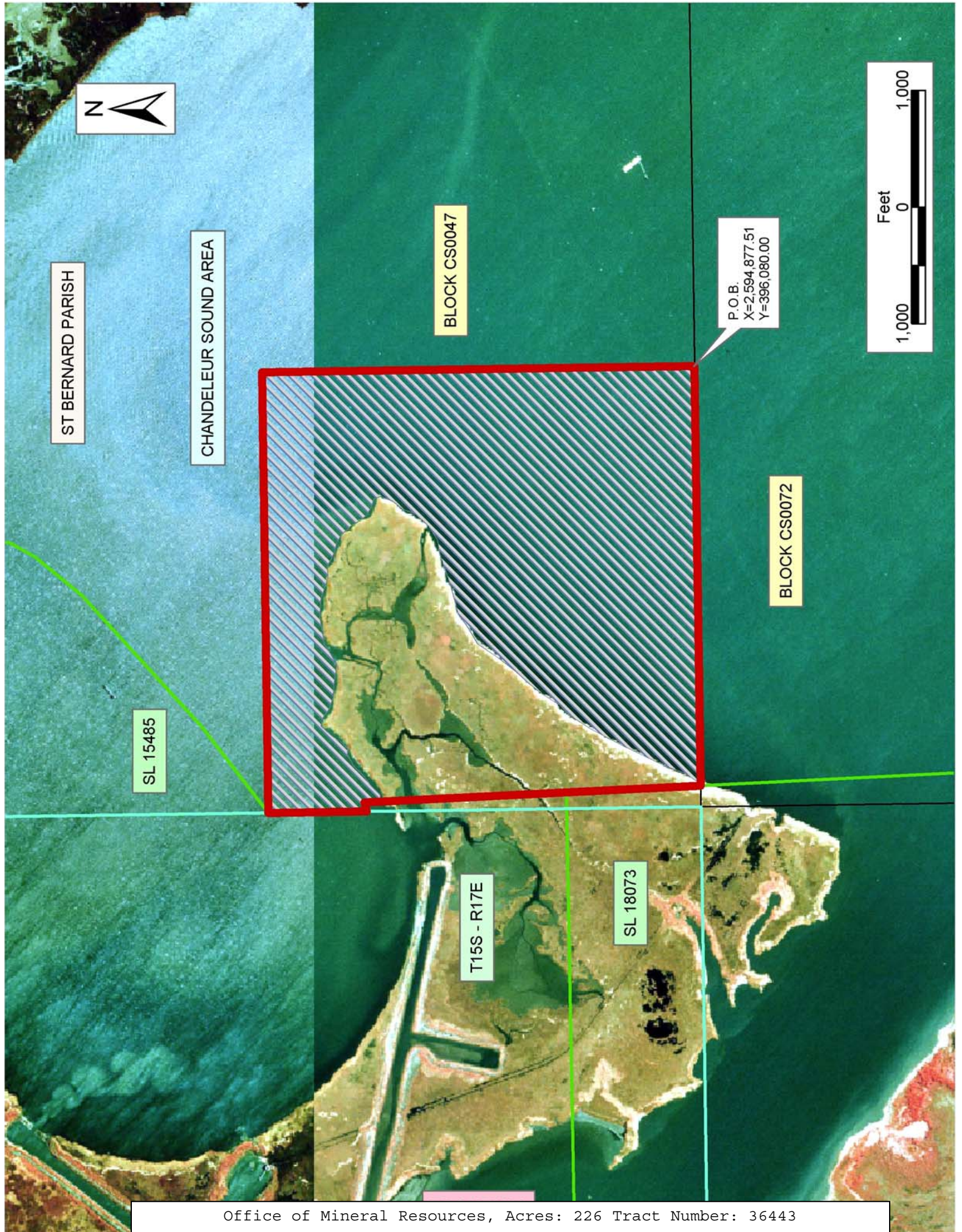
NOTE: The State of Louisiana does hereby reserve, and this lease shall be subject to, the imprescriptible right of surface use in the nature of a servitude in favor of the Department of Natural Resources, including its Offices and Commissions, for the sole purpose of implementing, constructing, servicing and maintaining approved coastal zone management

and/or restoration projects. Utilization of any and all rights derived under this lease by the mineral lessee, its agents, successors or assigns, shall not interfere with nor hinder the reasonable surface use by the Department of Natural Resources, its Offices or Commissions, as herein above reserved.

NOTE: The Department of Wildlife and Fisheries has designated certain areas in the coastal waters of the State of Louisiana as Oyster Seed Bed Areas. The exact location of those Seed Bed Areas must be obtained from the Department of Wildlife and Fisheries and any work done under a mineral lease from the State of Louisiana may necessarily be conducted in conformity with the rules and regulations promulgated by the said Department of Wildlife and Fisheries for Oyster Seed Bed Areas.

Applicant: Mineral Services, Inc.

Bidder	Cash Payment	Price/Acre	Rental	Oil	Gas	Other



ST BERNARD PARISH

CHANDELEUR SOUND AREA

BLOCK CS0047

P.O.B.
X=2,594,877.51
Y=396,080.00



SL 15485

BLOCK CS0072

T15S - R17E

SL 18073

TRACT 36444 - Portion of Block 63, Chandeleur Sound Area, St. Bernard Parish, Louisiana

All of the lands now or formerly constituting the beds and bottoms of all water bodies of every nature and description the title of which vests in the State of Louisiana, together with all islands arising therein and other lands formed by accretion or by reliction, where allowed by law, excepting tax adjudicated lands, and not presently under mineral lease on July 14, 2004, situated in St. Bernard Parish, Louisiana, and more particularly described as follows: Beginning at the Southwest corner of Block 63, Chandeleur Sound Area, having Coordinates of X = 2,723,850.00 and Y = 381,330.00; Thence North 14,750.00 feet along the West boundary of said Block 63 to its Northwest corner having Coordinates of X = 2,723,850.00 and Y = 396,080.00; Thence East 7,375.00 feet along the North boundary of said Block 63 to a point having Coordinates of X = 2,731,225.00 and Y = 396,080.00; Thence South 14,750.00 feet to a point on the South boundary of said Block 63 having Coordinates of X = 2,731,225.00 and Y = 381,330.00; Thence West 7,375.00 feet along the said South boundary of Block 63 to the point of beginning, containing approximately **2,497.27 acres**, all as more particularly outlined on a plat on file in the Office of Mineral Resources, Department of Natural Resources. All bearings, distances and coordinates are based on Louisiana Coordinate System of 1927, (North or South Zone), where applicable.

NOTE: The above description of the Tract nominated for lease has been provided and corrected, where required, exclusively by the nomination party. Any mineral lease selected from this Tract and awarded by the Louisiana State Mineral Board shall be without warranty of any kind, either express, implied, or statutory, including, but not limited to, the implied warranties of merchantability and fitness for a particular purpose. Should the mineral lease awarded by the Louisiana State Mineral Board be subsequently modified, cancelled or abrogated due to the existence of conflicting leases, operating agreements, private claims or other future obligations or conditions which may affect all or any portion of the leased Tract, it shall not relieve the Lessee of the obligation to pay any bonus due thereon to the Louisiana State Mineral Board, nor shall the Louisiana State Mineral Board be obligated to refund any consideration paid by the Lessor prior to such modification, cancellation, or abrogation, including, but not limited to, bonuses, rentals and royalties.

NOTE: The Office of Mineral Resources will require a minimum bonus of \$190 per acre and a minimum royalty of 22%.

NOTE: The State of Louisiana does hereby reserve, and this lease shall be subject to, the imprescriptible right of surface use in the nature of a servitude in favor of the Department of Natural Resources, including its Offices and Commissions, for the sole purpose of implementing, constructing, servicing and maintaining approved coastal zone management and/or restoration projects. Utilization of any and all rights derived under this lease by the mineral lessee, its agents, successors or assigns,

shall not interfere with nor hinder the reasonable surface use by the Department of Natural Resources, its Offices or Commissions, as herein above reserved.

Applicant: Oil And Gas Resources, Inc.

Bidder	Cash Payment	Price/Acre	Rental	Oil	Gas	Other



BLOCK CS0057

BLOCK CS0062

BLOCK BS0008

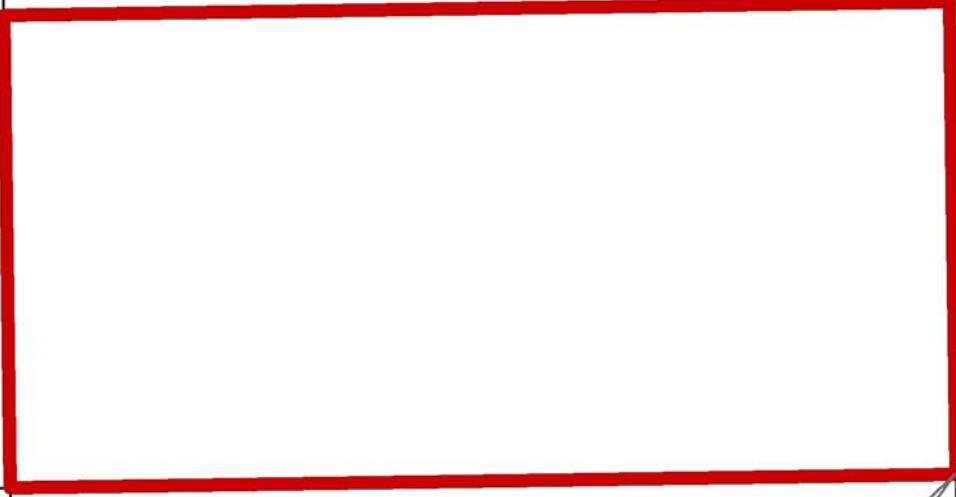
BLOCK CS0056

BLOCK CS0063

BLOCK BS0007



CHANDELEUR
SOUND AREA



BRETON SOUND AREA

S.L. 17987

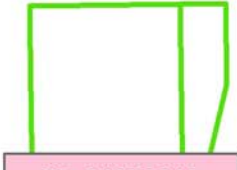
P.O.B.
X=2,723,850.00
Y=381,330.00

BLOCK CS0055

BLOCK CS0064

BLOCK BS0006

ST BERNARD PARISH



TRACT 36445 - Portion of Block 63, Chandeleur Sound Area, St. Bernard Parish, Louisiana

All of the lands now or formerly constituting the beds and bottoms of all water bodies of every nature and description the title of which vests in the State of Louisiana, together with all islands arising therein and other lands formed by accretion or by reliction, where allowed by law, excepting tax adjudicated lands, and not presently under mineral lease on July 14, 2004, situated in St. Bernard Parish, Louisiana, and more particularly described as follows: Beginning at the Northeast corner of Block 63, Chandeleur Sound Area, having Coordinates of X = 2,738,600.00 and Y = 396,080.00; Thence South 14,750.00 feet along the East boundary of said Block 63 to its Southeast corner having Coordinates of X = 2,738,600.00 and Y = 381,330.00; Thence West 7,375.00 feet along the South boundary of said Block 63 to a point having Coordinates of X = 2,731,225.00 and Y = 381,330.00; Thence North 14,750.00 feet to a point on the North boundary of said Block 63 having Coordinates of X = 2,731,225.00 and Y = 396,080.00; Thence East 7,375.00 feet along the said North boundary of Block 63 to the point of beginning, containing approximately **2,497.27 acres**, all as more particularly outlined on a plat on file in the Office of Mineral Resources, Department of Natural Resources. All bearings, distances and coordinates are based on Louisiana Coordinate System of 1927, (North or South Zone), where applicable.

NOTE: The above description of the Tract nominated for lease has been provided and corrected, where required, exclusively by the nomination party. Any mineral lease selected from this Tract and awarded by the Louisiana State Mineral Board shall be without warranty of any kind, either express, implied, or statutory, including, but not limited to, the implied warranties of merchantability and fitness for a particular purpose. Should the mineral lease awarded by the Louisiana State Mineral Board be subsequently modified, cancelled or abrogated due to the existence of conflicting leases, operating agreements, private claims or other future obligations or conditions which may affect all or any portion of the leased Tract, it shall not relieve the Lessee of the obligation to pay any bonus due thereon to the Louisiana State Mineral Board, nor shall the Louisiana State Mineral Board be obligated to refund any consideration paid by the Lessor prior to such modification, cancellation, or abrogation, including, but not limited to, bonuses, rentals and royalties.

NOTE: The Office of Mineral Resources will require a minimum bonus of \$190 per acre and a minimum royalty of 22%.

NOTE: The State of Louisiana does hereby reserve, and this lease shall be subject to, the imprescriptible right of surface use in the nature of a servitude in favor of the Department of Natural Resources, including its Offices and Commissions, for the sole purpose of implementing, constructing, servicing and maintaining approved coastal zone management and/or restoration projects. Utilization of any and all rights derived under this lease by the mineral lessee, its agents, successors or assigns,

shall not interfere with nor hinder the reasonable surface use by the Department of Natural Resources, its Offices or Commissions, as herein above reserved.

Applicant: Oil And Gas Resources, Inc.

Bidder	Cash Payment	Price/Acre	Rental	Oil	Gas	Other



BLOCK CS0057

ST BERNARD PARISH

BLOCK CS0062

BLOCK BS0008

P.O.B.
X=2,738,600.00
Y=396,080.00



BLOCK CS0056

BLOCK CS0063

BLOCK BS0007

CHANDELEUR
SOUND AREA

BRETON SOUND AREA

TRACT 36446 - Portion of Block 62, Chandeleur Sound Area, St. Bernard Parish, Louisiana

All of the lands now or formerly constituting the beds and bottoms of all water bodies of every nature and description the title of which vests in the State of Louisiana, together with all islands arising therein and other lands formed by accretion or by reliction, where allowed by law, excepting tax adjudicated lands, and not presently under mineral lease on July 14, 2004, situated in St. Bernard Parish, Louisiana, and more particularly described as follows: Beginning at the Northwest corner of Block 62, Chandeleur Sound Area, having Coordinates of X = 2,738,600.00 and Y = 396,080.00; Thence East 14,750.00 feet along the North boundary of said Block 62 to its Northeast corner having Coordinates of X = 2,753,350.00 and Y = 396,080.00; Thence South 7,375.00 feet along the East boundary of said Block 62 to a point having Coordinates of X = 2,753,350.00 and Y = 388,705.00; Thence West 14,750.00 feet to a point on the West boundary of said Block 62 having Coordinates of X = 2,738,600.00 and Y = 388,705.00; Thence North 7,375.00 feet along the said West boundary of Block 62 to the point of beginning, containing approximately **2,497.27 acres**, all as more particularly outlined on a plat on file in the Office of Mineral Resources, Department of Natural Resources. All bearings, distances and coordinates are based on Louisiana Coordinate System of 1927, (North or South Zone), where applicable.

NOTE: The above description of the Tract nominated for lease has been provided and corrected, where required, exclusively by the nomination party. Any mineral lease selected from this Tract and awarded by the Louisiana State Mineral Board shall be without warranty of any kind, either express, implied, or statutory, including, but not limited to, the implied warranties of merchantability and fitness for a particular purpose. Should the mineral lease awarded by the Louisiana State Mineral Board be subsequently modified, cancelled or abrogated due to the existence of conflicting leases, operating agreements, private claims or other future obligations or conditions which may affect all or any portion of the leased Tract, it shall not relieve the Lessee of the obligation to pay any bonus due thereon to the Louisiana State Mineral Board, nor shall the Louisiana State Mineral Board be obligated to refund any consideration paid by the Lessor prior to such modification, cancellation, or abrogation, including, but not limited to, bonuses, rentals and royalties.

NOTE: The Office of Mineral Resources will require a minimum bonus of \$190 per acre and a minimum royalty of 22%.

NOTE: The State of Louisiana does hereby reserve, and this lease shall be subject to, the imprescriptible right of surface use in the nature of a servitude in favor of the Department of Natural Resources, including its Offices and Commissions, for the sole purpose of implementing, constructing, servicing and maintaining approved coastal zone management and/or restoration projects. Utilization of any and all rights derived under this lease by the mineral lessee, its agents, successors or assigns,

shall not interfere with nor hinder the reasonable surface use by the Department of Natural Resources, its Offices or Commissions, as herein above reserved.

Applicant: Oil And Gas Resources, Inc.

Bidder	Cash Payment	Price/Acre	Rental	Oil	Gas	Other



BLOCK CS0058

BLOCK CS0061



ST BERNARD PARISH

BLOCK CS0057

BLOCK CS0062

CHANDELEUR SOUND AREA

BLOCK CS0056

P.O.B.
X=2,738,600.00
Y=396,080.00

BLOCK CS0063

TRACT 36447 - Vermilion Parish, Louisiana

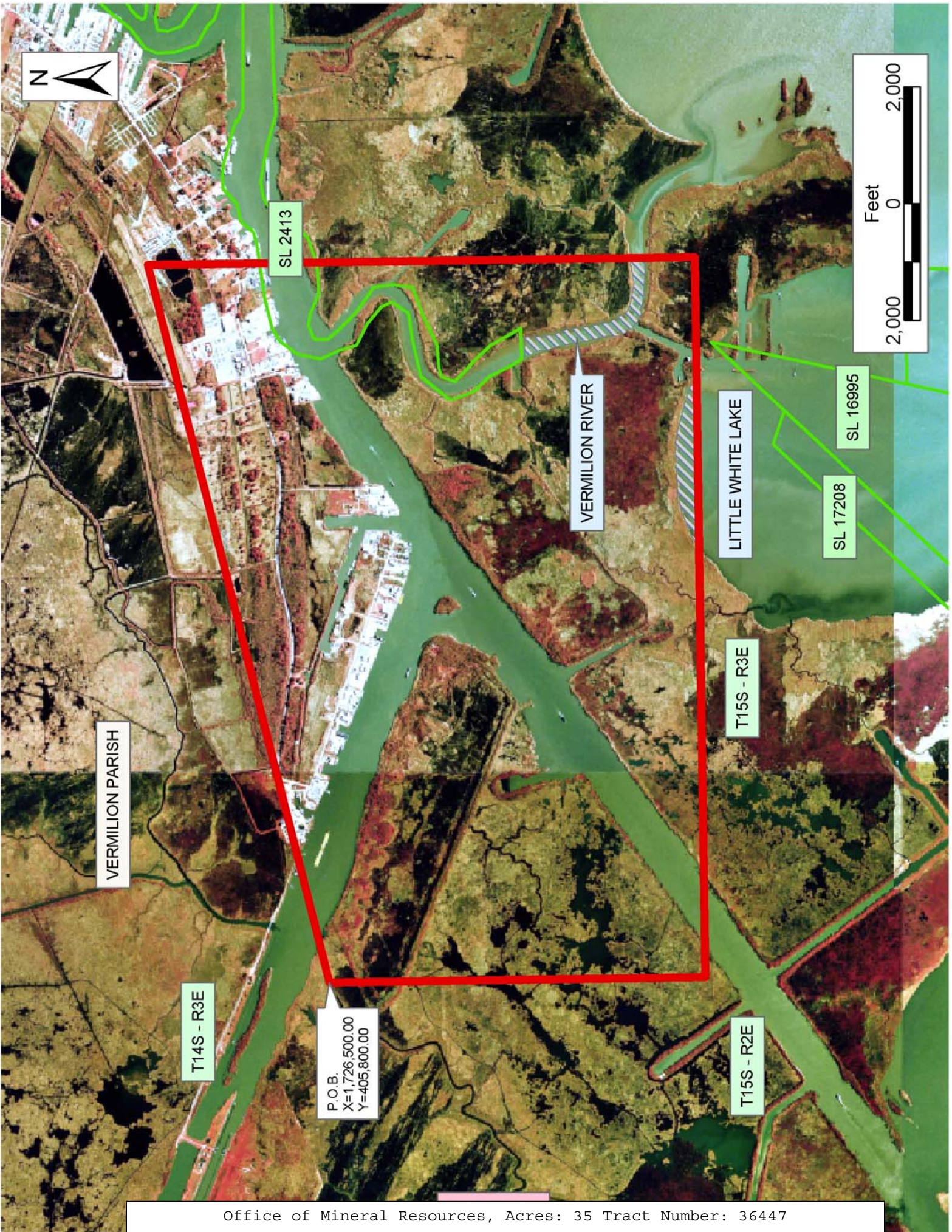
All of the lands now or formerly constituting the beds and bottoms of all water bodies of every nature and description the title of which vests in the State of Louisiana, together with all islands arising therein and other lands formed by accretion or by reliction, where allowed by law, excepting tax adjudicated lands, and not presently under mineral lease on July 14, 2004, situated in Vermilion Parish, Louisiana, and more particularly described as follows: Beginning at a point having Coordinates of X = 1,726,500.00 and Y = 405,800.00; thence North 76 degrees 38 minutes 21 seconds East 12,701.78 feet to a point having Coordinates of X = 1,738,858.00 and Y = 408,735.14; thence South 9,385.14 feet to a point having Coordinates of X = 1,738,858.00 and Y = 399,350.00; thence West 12,358.00 feet to a point having Coordinates of X = 1,726,500.00 and Y = 399,350.00; thence North 6,450.00 feet to the point of beginning, **LESS AND EXCEPT** that portion of State Lease No. 2413 that may lie within the above described tract, containing approximately **35 acres**, all as more particularly outlined on a plat on file in the Office of Mineral Resources, Department of Natural Resources. All bearings, distances and coordinates are based on Louisiana Coordinate System of 1927, (North or South Zone), where applicable.

NOTE: The above description of the Tract nominated for lease has been provided and corrected, where required, exclusively by the nomination party. Any mineral lease selected from this Tract and awarded by the Louisiana State Mineral Board shall be without warranty of any kind, either express, implied, or statutory, including, but not limited to, the implied warranties of merchantability and fitness for a particular purpose. Should the mineral lease awarded by the Louisiana State Mineral Board be subsequently modified, cancelled or abrogated due to the existence of conflicting leases, operating agreements, private claims or other future obligations or conditions which may affect all or any portion of the leased Tract, it shall not relieve the Lessee of the obligation to pay any bonus due thereon to the Louisiana State Mineral Board, nor shall the Louisiana State Mineral Board be obligated to refund any consideration paid by the Lessor prior to such modification, cancellation, or abrogation, including, but not limited to, bonuses, rentals and royalties.

NOTE: The State of Louisiana does hereby reserve, and this lease shall be subject to, the imprescriptible right of surface use in the nature of a servitude in favor of the Department of Natural Resources, including its Offices and Commissions, for the sole purpose of implementing, constructing, servicing and maintaining approved coastal zone management and/or restoration projects. Utilization of any and all rights derived under this lease by the mineral lessee, its agents, successors or assigns, shall not interfere with nor hinder the reasonable surface use by the Department of Natural Resources, its Offices or Commissions, as herein above reserved.

Applicant: Jim Rousseau

Bidder	Cash Payment	Price/Acre	Rental	Oil	Gas	Other



VERMILION PARISH

T14S - R3E

P.O.B.
X=1,726,500.00
Y=405,800.00

T15S - R2E

SL 2413

VERMILION RIVER

LITTLE WHITE LAKE

T15S - R3E

SL 17208

SL 16995

TRACT 36448 - Portion of Block 71, Chandeleur Sound Area, St. Bernard Parish, Louisiana

All of the lands now or formerly constituting the beds and bottoms of all water bodies of every nature and description the title of which vests in the State of Louisiana, together with all islands arising therein and other lands formed by accretion or by reliction, where allowed by law, excepting tax adjudicated lands, and not presently under mineral lease on July 14, 2004, situated in St. Bernard Parish, Louisiana, and more particularly described as follows: Beginning at the Northwest corner of Block 71, Chandeleur Sound Area, also being the Northwest corner of State Lease No. 4147, having Coordinates of X = 2,605,850.00 and Y = 396,080.00; Thence South 45 degrees 00 minutes 00 seconds East 6,929.65 feet along the West line of said State Lease No. 4147 to its Southwest corner, having Coordinates of X = 2,610,750.00 and Y = 391,180.00; Thence South 5,180.00 feet to a point having Coordinates of X = 2,610,750.00 and Y = 386,000.00; Thence West 4,900.00 feet to a point on the West boundary of said Block 71, having Coordinates of X = 2,605,850.00 and Y = 386,000.00; Thence North 10,080.00 feet along the West boundary of said Block 71 to the point of beginning, containing approximately **858.29 acres**, all as more particularly outlined on a plat on file in the Office of Mineral Resources, Department of Natural Resources. All bearings, distances and coordinates are based on Louisiana Coordinate System of 1927, (North or South Zone), where applicable.

NOTE: The above description of the Tract nominated for lease has been provided and corrected, where required, exclusively by the nomination party. Any mineral lease selected from this Tract and awarded by the Louisiana State Mineral Board shall be without warranty of any kind, either express, implied, or statutory, including, but not limited to, the implied warranties of merchantability and fitness for a particular purpose. Should the mineral lease awarded by the Louisiana State Mineral Board be subsequently modified, cancelled or abrogated due to the existence of conflicting leases, operating agreements, private claims or other future obligations or conditions which may affect all or any portion of the leased Tract, it shall not relieve the Lessee of the obligation to pay any bonus due thereon to the Louisiana State Mineral Board, nor shall the Louisiana State Mineral Board be obligated to refund any consideration paid by the Lessor prior to such modification, cancellation, or abrogation, including, but not limited to, bonuses, rentals and royalties.

NOTE: The State of Louisiana does hereby reserve, and this lease shall be subject to, the imprescriptible right of surface use in the nature of a servitude in favor of the Department of Natural Resources, including its Offices and Commissions, for the sole purpose of implementing, constructing, servicing and maintaining approved coastal zone management and/or restoration projects. Utilization of any and all rights derived under this lease by the mineral lessee, its agents, successors or assigns, shall not interfere with nor hinder the reasonable surface use by the

Department of Natural Resources, its Offices or Commissions, as herein above reserved.

NOTE: The Department of Wildlife and Fisheries has designated certain areas in the coastal waters of the State of Louisiana as Oyster Seed Bed Areas. The exact location of those Seed Bed Areas must be obtained from the Department of Wildlife and Fisheries and any work done under a mineral lease from the State of Louisiana may necessarily be conducted in conformity with the rules and regulations promulgated by the said Department of Wildlife and Fisheries for Oyster Seed Bed Areas.

Applicant: South Louisiana Minerals, Inc.

Bidder	Cash Payment	Price/Acre	Rental	Oil	Gas	Other



SL 17002

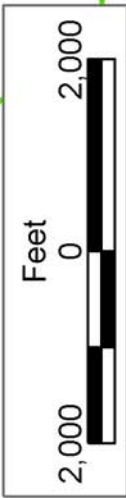
CHANDELEUR SOUND AREA

SL 4147

ST BERNARD PARISH

BLOCK CS0071

SL 17276



P.O.B.
X=2,605,850.00
Y=396,080.00

SL 17692

SL 4039

SL 16158

BLOCK CS0072

TRACT 36449 - Portion of Block 72, Chandeleur Sound Area, St. Bernard Parish, Louisiana

All of the lands now or formerly constituting the beds and bottoms of all water bodies of every nature and description the title of which vests in the State of Louisiana, together with all islands arising therein and other lands formed by accretion or by reliction, where allowed by law, excepting tax adjudicated lands, and not presently under mineral lease on July 14, 2004, situated in St. Bernard Parish, Louisiana, and more particularly described as follows: Beginning at a point on the North boundary of Block 72, Chandeleur Sound Area, having Coordinates of X = 2,591,280.02 and Y = 396,080.00; Thence East 7,194.98 feet along the North boundary of said Block 72 to a point being the Northwest corner of State Lease No. 16158 having Coordinates of X = 2,598,475.00 and Y = 396,080.00; Thence South 7,375.00 feet along the West line of said State Lease No. 16158 to its Southwest corner, said point having Coordinates of X = 2,598,475.00 and Y = 388,705.00; Thence South 2,705.00 feet to a point having Coordinates of X = 2,598,475.00 and Y = 386,000.00; Thence West 7,375.00 feet to a point on the West boundary of Block 72, having Coordinates of X = 2,591,100.00 and Y = 386,000.00; Thence North 2,705.00 feet along the West boundary of said Block 72 to a point having Coordinates of X = 2,591,100.00 and Y = 388,705.00; Thence East 751.03 feet to a point having Coordinates of X = 2,591,851.03 and Y = 388,705.00; Thence North 07 degrees 21 minutes 34 seconds West 3,320.20 feet to a point having Coordinates of X = 2,591,425.73 and Y = 391,997.85; Thence North 02 degrees 02 minutes 39 seconds West 4,084.75 feet to the point of beginning, containing approximately **1252 acres**, all as more particularly outlined on a plat on file in the Office of Mineral Resources, Department of Natural Resources. All bearings, distances and coordinates are based on Louisiana Coordinate System of 1927, (North or South Zone), where applicable.

NOTE: The above description of the Tract nominated for lease has been provided and corrected, where required, exclusively by the nomination party. Any mineral lease selected from this Tract and awarded by the Louisiana State Mineral Board shall be without warranty of any kind, either express, implied, or statutory, including, but not limited to, the implied warranties of merchantability and fitness for a particular purpose. Should the mineral lease awarded by the Louisiana State Mineral Board be subsequently modified, cancelled or abrogated due to the existence of conflicting leases, operating agreements, private claims or other future obligations or conditions which may affect all or any portion of the leased Tract, it shall not relieve the Lessee of the obligation to pay any bonus due thereon to the Louisiana State Mineral Board, nor shall the Louisiana State Mineral Board be obligated to refund any consideration paid by the Lessor prior to such modification, cancellation, or abrogation, including, but not limited to, bonuses, rentals and royalties.

NOTE: The State of Louisiana does hereby reserve, and this lease shall be subject to, the imprescriptible right of surface use in the nature of a

servitude in favor of the Department of Natural Resources, including its Offices and Commissions, for the sole purpose of implementing, constructing, servicing and maintaining approved coastal zone management and/or restoration projects. Utilization of any and all rights derived under this lease by the mineral lessee, its agents, successors or assigns, shall not interfere with nor hinder the reasonable surface use by the Department of Natural Resources, its Offices or Commissions, as herein above reserved.

NOTE: The Department of Wildlife and Fisheries has designated certain areas in the coastal waters of the State of Louisiana as Oyster Seed Bed Areas. The exact location of those Seed Bed Areas must be obtained from the Department of Wildlife and Fisheries and any work done under a mineral lease from the State of Louisiana may necessarily be conducted in conformity with the rules and regulations promulgated by the said Department of Wildlife and Fisheries for Oyster Seed Bed Areas.

Applicant: South Louisiana Minerals, Inc.

Bidder	Cash Payment	Price/Acre	Rental	Oil	Gas	Other



SL 4039

ST BERNARD PARISH

SL 16158

BLOCK CS0047

LAKE ATHANASIO

BLOCK CS0072

CHANDELEUR SOUND AREA

P.O.B.
X=2,591,280.02
Y=396,080.00

SL 18073

T15S - R17E

TRACT 36450 - Portion of Block 71, Chandeleur Sound Area, St. Bernard Parish, Louisiana

All of the lands now or formerly constituting the beds and bottoms of all water bodies of every nature and description the title of which vests in the State of Louisiana, together with all islands arising therein and other lands formed by accretion or by reliction, where allowed by law, excepting tax adjudicated lands, and not presently under mineral lease on July 14, 2004, situated in St. Bernard Parish, Louisiana, and more particularly described as follows: Beginning at the Southeast corner of State Lease No. 4147, said point is located on the East boundary of Block 71, having Coordinates of X = 2,620,600.00 and Y = 391,180.00; Thence South 3,850.00 feet along the East boundary of said Block 71 to the Northeast corner of State Lease No. 17276, having Coordinates of X = 2,620,600.00 and Y = 387,330.00; Thence South 73 degrees 42 minutes 54 seconds West 4,636.00 feet along the North line of said State Lease No. 17276 to its Northwest corner, having Coordinates of X = 2,616,150.00 and Y = 386,030.00; Thence South 29 degrees 03 minutes 34 seconds East 34.32 feet along the West Line of said State Lease No. 17276 to a point having Coordinates of X = 2,616,166.67 and Y = 386,000.00; Thence West 5,416.67 feet to a point having Coordinates of X = 2,610,750.00 and Y = 386,000.00; Thence North 5,180.00 feet to the Southwest corner of State Lease No. 4147, having Coordinates of X = 2,610,750.00 and Y = 391,180.00; Thence East 9,850.00 feet along the South line of said State Lease No. 4147 to the point of beginning, containing approximately **1,101.86 acres**, all as more particularly outlined on a plat on file in the Office of Mineral Resources, Department of Natural Resources. All bearings, distances and coordinates are based on Louisiana Coordinate System of 1927, (North or South Zone), where applicable.

NOTE: The above description of the Tract nominated for lease has been provided and corrected, where required, exclusively by the nomination party. Any mineral lease selected from this Tract and awarded by the Louisiana State Mineral Board shall be without warranty of any kind, either express, implied, or statutory, including, but not limited to, the implied warranties of merchantability and fitness for a particular purpose. Should the mineral lease awarded by the Louisiana State Mineral Board be subsequently modified, cancelled or abrogated due to the existence of conflicting leases, operating agreements, private claims or other future obligations or conditions which may affect all or any portion of the leased Tract, it shall not relieve the Lessee of the obligation to pay any bonus due thereon to the Louisiana State Mineral Board, nor shall the Louisiana State Mineral Board be obligated to refund any consideration paid by the Lessor prior to such modification, cancellation, or abrogation, including, but not limited to, bonuses, rentals and royalties.

NOTE: The State of Louisiana does hereby reserve, and this lease shall be subject to, the imprescriptible right of surface use in the nature of a servitude in favor of the Department of Natural Resources, including its Offices and Commissions, for the sole purpose of implementing,

constructing, servicing and maintaining approved coastal zone management and/or restoration projects. Utilization of any and all rights derived under this lease by the mineral lessee, its agents, successors or assigns, shall not interfere with nor hinder the reasonable surface use by the Department of Natural Resources, its Offices or Commissions, as herein above reserved.

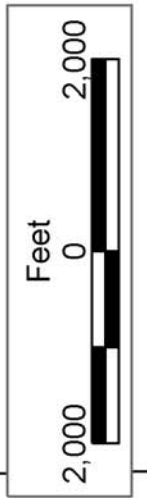
NOTE: The Department of Wildlife and Fisheries has designated certain areas in the coastal waters of the State of Louisiana as Oyster Seed Bed Areas. The exact location of those Seed Bed Areas must be obtained from the Department of Wildlife and Fisheries and any work done under a mineral lease from the State of Louisiana may necessarily be conducted in conformity with the rules and regulations promulgated by the said Department of Wildlife and Fisheries for Oyster Seed Bed Areas.

Applicant: South Louisiana Minerals, Inc.

Bidder	Cash Payment	Price/Acre	Rental	Oil	Gas	Other



P.O.B.
X=2,620,600.00
Y=391,180.00



ST BERNARD PARISH

SL 4147

BLOCK CS0071

CHANDELEUR SOUND AREA

SL 17276

SL 6618

SL 13306

SL 12503

SL 18043

MAIN PASS AREA, REVISED