

TRACT 36431 - Bienville, Bossier and Webster Parishes, Louisiana

All of the lands now or formerly constituting the beds and bottoms of all water bodies of every nature and description the title of which vests in the State of Louisiana, together with all islands arising therein and other lands formed by accretion or by reliction, where allowed by law, excepting tax adjudicated lands, and not presently under mineral lease on July 14, 2004, situated in Bienville Bossier and Webster Parishes, Louisiana, and more particularly described as follows: Beginning at a point having Coordinates of X = 1,730,860.00 and Y = 629,920.00; thence West 16,060.00 feet to a point having Coordinates of X = 1,714,800.00 and Y = 629,920.00; thence North 5,522.23 feet to a point on the South line of State Lease No. 16531, as amended, having Coordinates of X = 1,714,800.00 and Y = 635,442.23; thence South 89 degrees 41 minutes 10 seconds East 5,700.09 feet along the South line of said State Lease No. 16531, to its Southeast corner, said corner also being a point on the West line of State Lease No. 16833, as amended, having Coordinates of X = 1,720,500.00 and Y = 635,411.01; thence South approximately 22 feet along the West line of said State Lease No. 16833, to its Southwest corner; thence South 88 degrees 30 minutes 00 seconds East approximately 4,762 feet along the South line of said State Lease No. 16833, to its Southeast corner, said corner also being a point on the West line of State Lease No. 16834, having Coordinates of X = 1,725,260.00 and Y = 635,264.00; thence South 64.00 feet along the West line of said State Lease No. 16834 to its Southwest corner having Coordinates of X = 1,725,260.00 and Y = 635,200.00; thence East 5,600.00 feet along the South line of said State Lease No. 16834 to its Southeast corner having Coordinates of X = 1,730,860.00 and Y = 635,200.00; thence South 5,280.00 feet to the point of beginning **Less and Except** Underground Storage Lease No. 470, and that portion of the nomination from the surface to 5530 feet located within the geographical boundary of the Underground Storage Lease No. 470, being the Bistineau Gas Storage Pool in the Sligo Formation, also known as the Pettit Formation, containing approximately **1170 acres**, all as more particularly outlined on a plat on file in the Office of Mineral Resources, Department of Natural Resources. All bearings, distances and coordinates are based on Louisiana Coordinate System of 1927, (North or South Zone), where applicable.

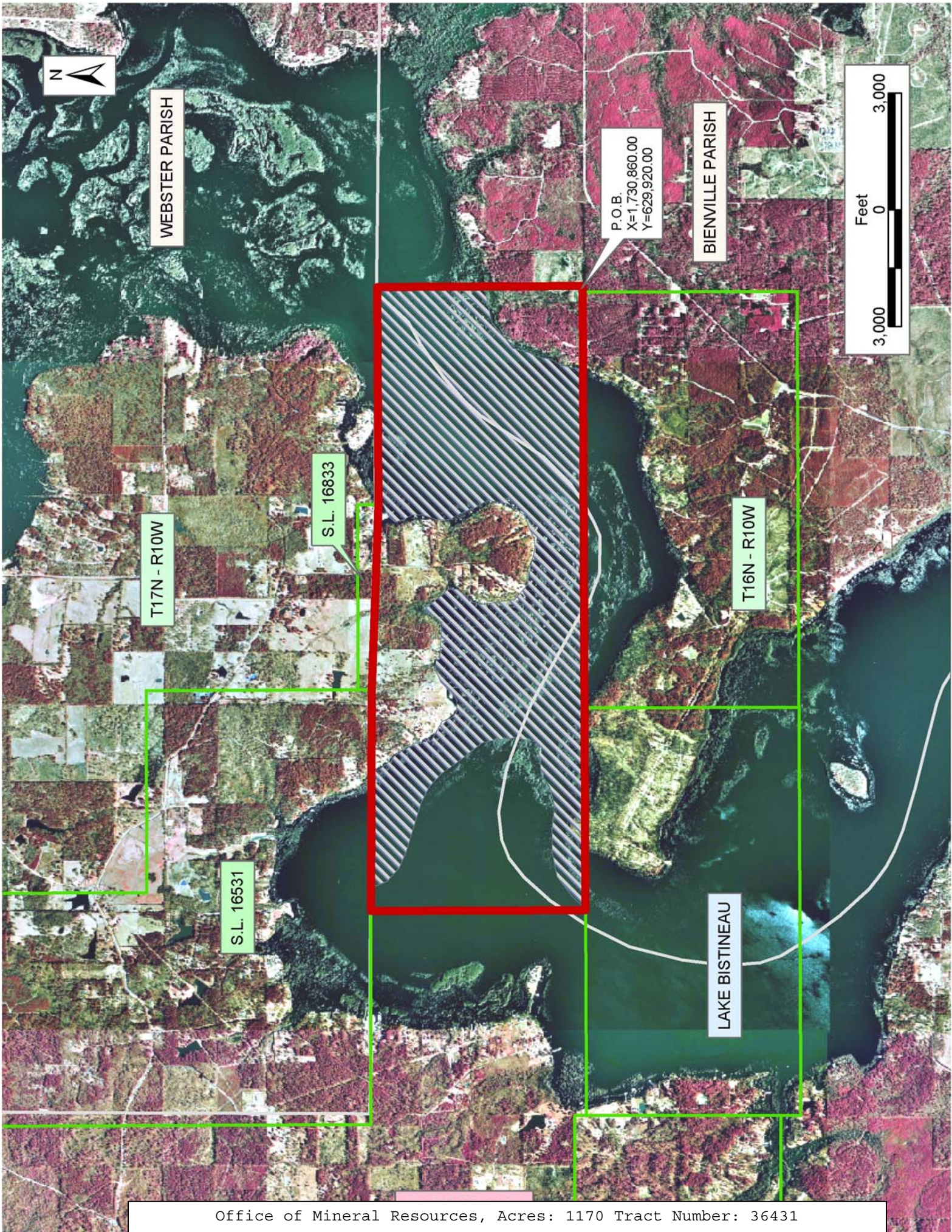
NOTE: The above description of the Tract nominated for lease has been provided and corrected, where required, exclusively by the nomination party. Any mineral lease selected from this Tract and awarded by the Louisiana State Mineral Board shall be without warranty of any kind, either express, implied, or statutory, including, but not limited to, the implied warranties of merchantability and fitness for a particular purpose. Should the mineral lease awarded by the Louisiana State Mineral Board be subsequently modified, cancelled or abrogated due to the existence of conflicting leases, operating agreements, private claims or other future obligations or conditions which may affect all or any portion of the leased Tract, it shall not relieve the Lessee of the obligation to pay any bonus due thereon to the Louisiana State Mineral Board, nor shall

the Louisiana State Mineral Board be obligated to refund any consideration paid by the Lessor prior to such modification, cancellation, or abrogation, including, but not limited to, bonuses, rentals and royalties.

NOTE: This tract encompasses an area beneath which is located on the Bistineau Gas Storage Pool in the Sligo formation of the Pettet Porosity. Accordingly, any mineral related activity, including, but not limited to, the exploration and drilling for, and the production and storage of oil, gas and other liquid or gaseous minerals, conducted under a valid mineral lease which may be obtained from the State, shall be subject to any statewide orders issued by the Louisiana Office of Conservation pertinent to conducting such operations in this area and upon this tract, including particularly, but not limited to, the following: Order Nos. 287, 287-A, 287-A-1, 287-B, Supplement to 287-B, 287-B-1, 287-B-2 and 287-B-3. The successful bidder on this tract shall contact the operator of the Bistineau Gas Storage Pool and the Office of Conservation prior to initiating and conducting any of the aforementioned activity hereon.

Applicant: Bistineau Partners

Bidder	Cash Payment	Price/Acre	Rental	Oil	Gas	Other



WEBSTER PARISH

BIENVILLE PARISH

LAKE BISTINEAU

T17N - R10W

T16N - R10W

S.L. 16531

S.L. 16833

P.O.B.
X=1,730,860.00
Y=629,920.00



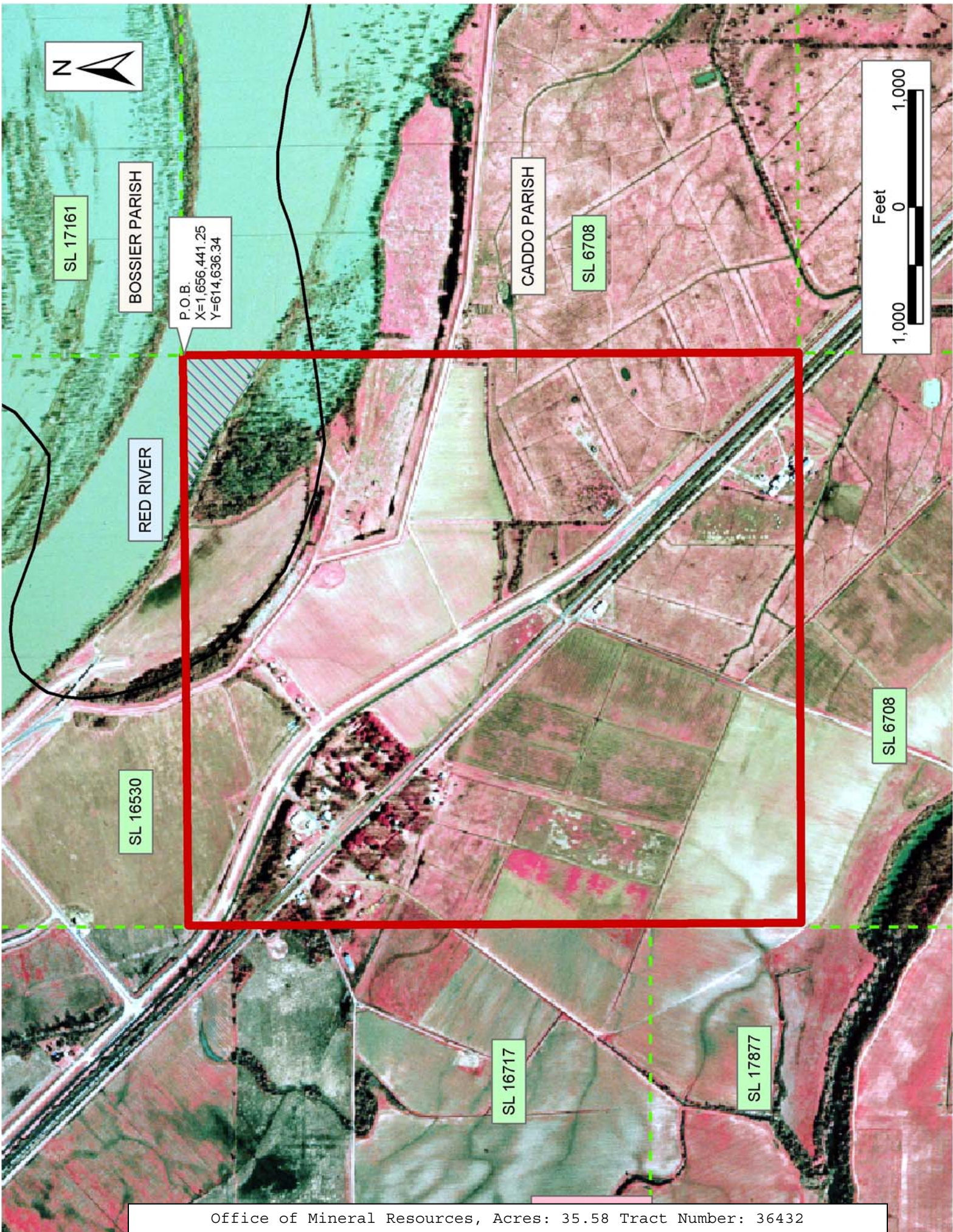
TRACT 36432 - Bossier and Caddo Parishes, Louisiana

All of the lands now or formerly constituting the beds and bottoms of all water bodies of every nature and description the title of which vests in the State of Louisiana, together with all islands arising therein and other lands formed by accretion or by reliction, where allowed by law, excepting tax adjudicated lands, and not presently under mineral lease on July 14, 2004, situated in Bossier and Caddo Parishes, Louisiana, and more particularly described as follows: Beginning at the Southwest corner of State Lease No. 17161 having Coordinates of X = 1,656,441.25 and Y = 614,636.34; thence South 5,280.00 feet to a point; thence West approximately 4891 feet to a point on the East boundary of State Lease No. 17877; thence Northerly approximately 1303 feet along the East boundary of said State Lease No. 17877 to its Northeast corner; thence Northerly approximately 3953 feet to a point having Coordinates of X = 1,651,540.31 and Y = 614,613.00; thence North 89 degrees 43 minutes 38 seconds East 4901.00 feet the point of beginning, **LESS AND EXCEPT** all those portions of State Lease Nos. 6708 as amended, 16530, 17877 and 16717 that may lie within the above described tract, containing approximately **35.58 acres**, all as more particularly outlined on a plat on file in the Office of Mineral Resources, Department of Natural Resources. All bearings, distances and coordinates are based on Louisiana Coordinate System of 1927, (North or South Zone), where applicable.

NOTE: The above description of the Tract nominated for lease has been provided and corrected, where required, exclusively by the nomination party. Any mineral lease selected from this Tract and awarded by the Louisiana State Mineral Board shall be without warranty of any kind, either express, implied, or statutory, including, but not limited to, the implied warranties of merchantability and fitness for a particular purpose. Should the mineral lease awarded by the Louisiana State Mineral Board be subsequently modified, cancelled or abrogated due to the existence of conflicting leases, operating agreements, private claims or other future obligations or conditions which may affect all or any portion of the leased Tract, it shall not relieve the Lessee of the obligation to pay any bonus due thereon to the Louisiana State Mineral Board, nor shall the Louisiana State Mineral Board be obligated to refund any consideration paid by the Lessor prior to such modification, cancellation, or abrogation, including, but not limited to, bonuses, rentals and royalties.

Applicant: Cypress Energy Corporation

Bidder	Cash Payment	Price/Acre	Rental	Oil	Gas	Other



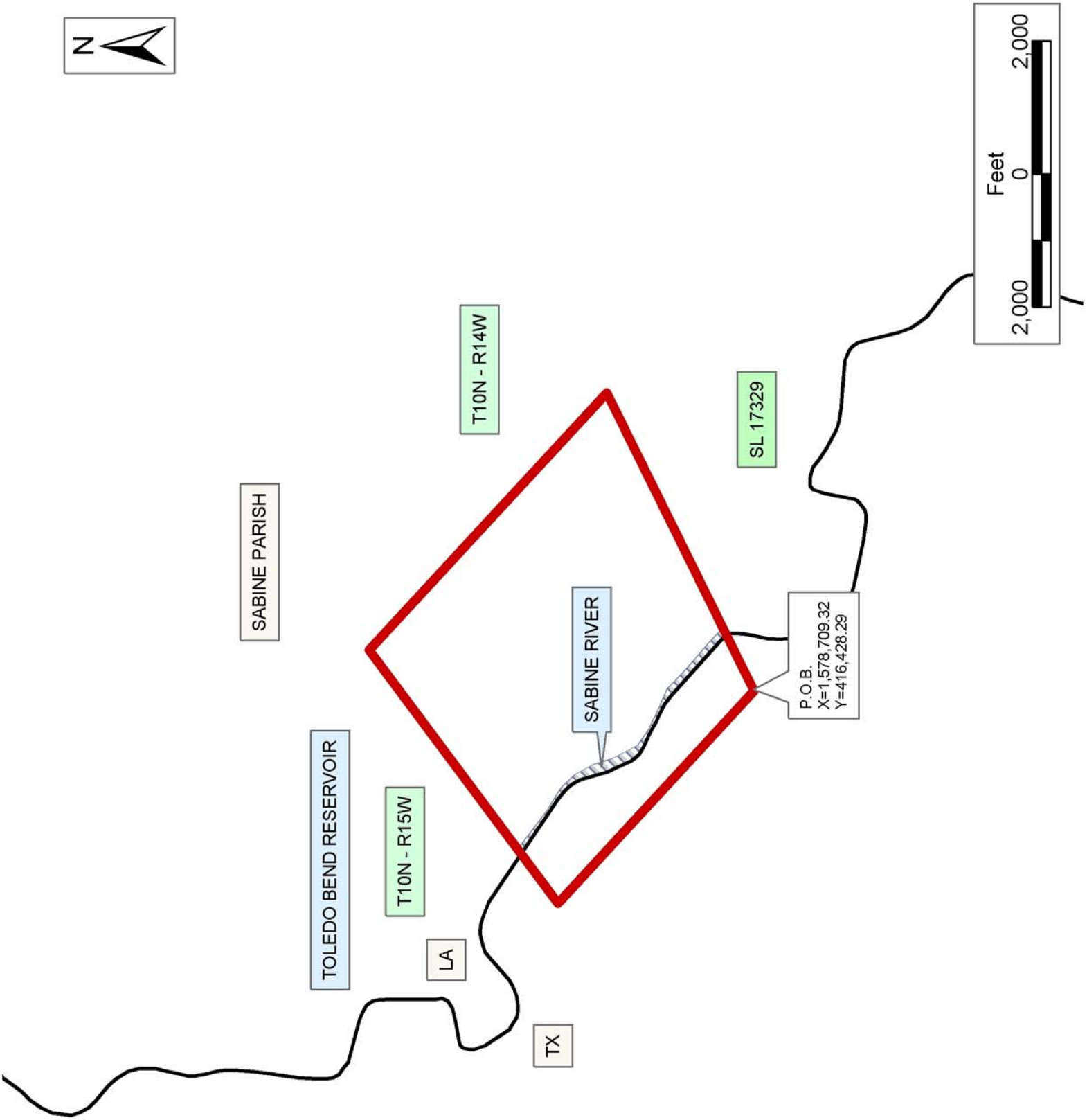
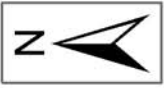
TRACT 36433 - Sabine Parish, Louisiana

All of the lands now or formerly constituting the beds and bottoms of all water bodies of every nature and description the title of which vests in the State of Louisiana, together with all islands arising therein and other lands formed by accretion or by reliction, where allowed by law, excepting tax adjudicated lands, and not presently under mineral lease on July 14, 2004, situated in Sabine Parish, Louisiana, and more particularly described as follows: Beginning at Northwest corner of State Lease No. 17329 having Coordinates of X = 1,578,709.32 feet and Y = 416,428.29 feet; Thence North 47 degrees 00 minutes 02 seconds West 4,344.49 feet to a point having Coordinates of X = 1,575,531.93 feet and Y = 419,391.20 feet; Thence North 53 degrees 32 minutes 52 seconds East 4,748.13 feet to a point having Coordinates of X = 1,579,351.10 feet and Y = 422,212.30 feet; Thence South 47 degrees 00 minutes 02 seconds East 5,267.16 feet to the Northeast corner of said State Lease No. 17329 having Coordinates of X = 1,583,203.29 feet and Y = 418,620.15 feet; Thence South 64 degrees 00 minutes 00 seconds West along the North line of said State Lease No. 17329 5,000.00 feet to the point of beginning, containing approximately **8 acres, LESS AND EXCEPT** that portion thereof, if any, located West of the boundary line between the States of Texas and Louisiana as determined by the report of the Special Master and adjudicated by the Supreme Court of the United States in litigation styled **Texas v. Louisiana, et al No. 36 Original**, or as otherwise approved by said court, all as more particularly outlined on a plat on file in the Office of Mineral Resources, Department of Natural Resources. All bearings, distances and coordinates are based on Louisiana Coordinate System of 1927, (North or South Zone), where applicable.

NOTE: The above description of the Tract nominated for lease has been provided and corrected, where required, exclusively by the nomination party. Any mineral lease selected from this Tract and awarded by the Louisiana State Mineral Board shall be without warranty of any kind, either express, implied, or statutory, including, but not limited to, the implied warranties of merchantability and fitness for a particular purpose. Should the mineral lease awarded by the Louisiana State Mineral Board be subsequently modified, cancelled or abrogated due to the existence of conflicting leases, operating agreements, private claims or other future obligations or conditions which may affect all or any portion of the leased Tract, it shall not relieve the Lessee of the obligation to pay any bonus due thereon to the Louisiana State Mineral Board, nor shall the Louisiana State Mineral Board be obligated to refund any consideration paid by the Lessor prior to such modification, cancellation, or abrogation, including, but not limited to, bonuses, rentals and royalties.

Applicant: Ellora Land Holdings, Lp

Bidder	Cash Payment	Price/Acre	Rental	Oil	Gas	Other



TRACT 36434 - St. James Parish, Louisiana

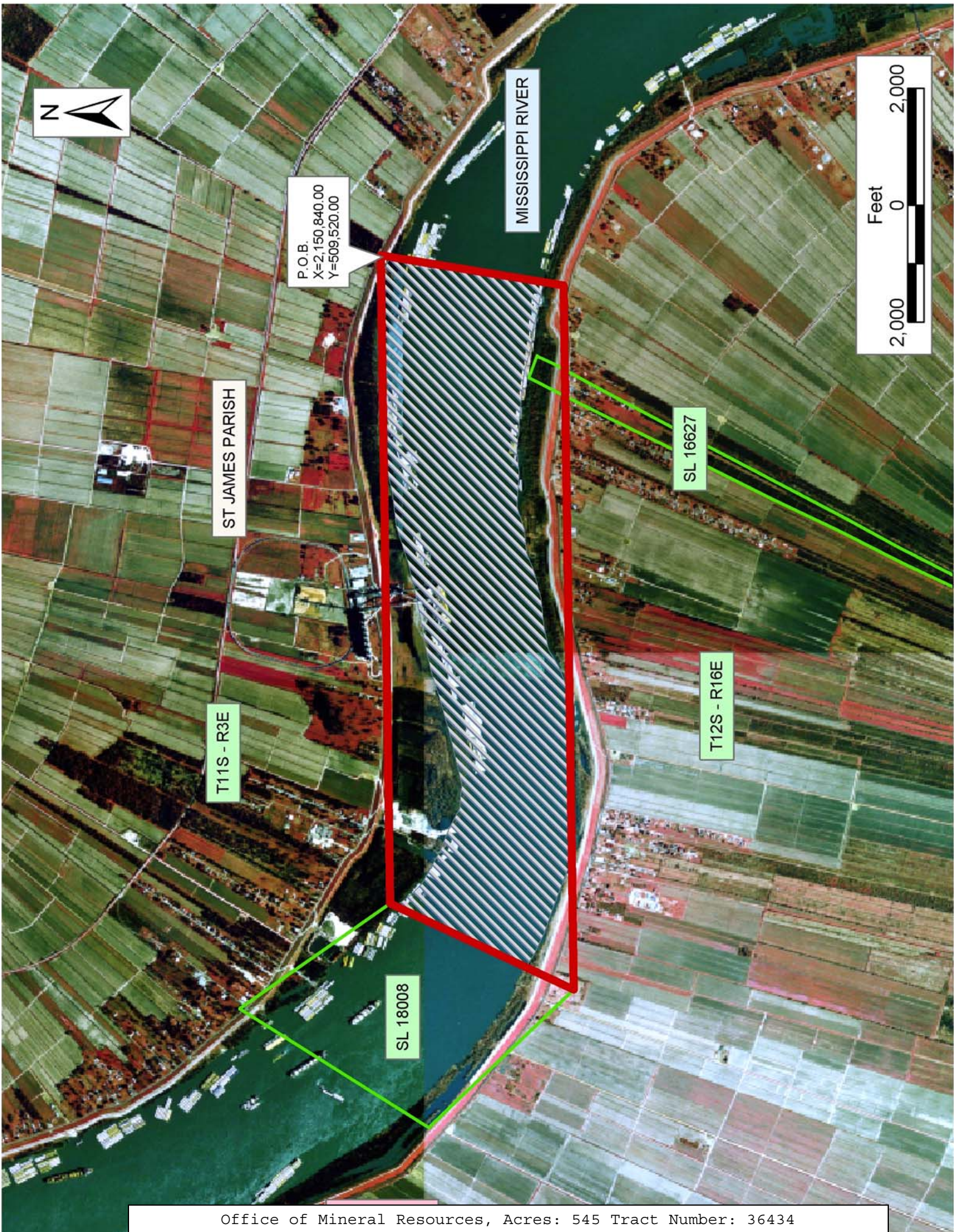
All of the lands now or formerly constituting the beds and bottoms of all water bodies of every nature and description the title of which vests in the State of Louisiana, together with all islands arising therein and other lands formed by accretion or by reliction, where allowed by law, excepting tax adjudicated lands, and not presently under mineral lease on July 14, 2004, situated in St. James Parish, Louisiana, and more particularly described as follows: Beginning at a point having Coordinates of X = 2,150,840.00 and Y = 509,520.00; thence South 10 degrees 10 minutes 32 seconds West 3,169.86 feet to a point having Coordinates of X = 2,150,280.00 and Y = 506,400.00; thence West 12,060.00 feet to the Southern corner of State Lease No. 18008 having Coordinates of X = 2,138,220.00 and Y = 506,400.00; thence North 25 degrees 58 minutes 28 seconds East 3,470.56 feet on the East line of said State Lease No. 18008 to its Northeast corner having Coordinates of X = 2,139,740.00 and Y = 509,520.00; thence East 11,100.00 feet to the point of beginning, **LESS AND EXCEPT** any portion of State Lease No. 16627 that may lie within the above described tract, containing approximately **545 acres**, all as more particularly outlined on a plat on file in the Office of Mineral Resources, Department of Natural Resources. All bearings, distances and coordinates are based on Louisiana Coordinate System of 1927, (North or South Zone), where applicable.

NOTE: The above description of the Tract nominated for lease has been provided and corrected, where required, exclusively by the nomination party. Any mineral lease selected from this Tract and awarded by the Louisiana State Mineral Board shall be without warranty of any kind, either express, implied, or statutory, including, but not limited to, the implied warranties of merchantability and fitness for a particular purpose. Should the mineral lease awarded by the Louisiana State Mineral Board be subsequently modified, cancelled or abrogated due to the existence of conflicting leases, operating agreements, private claims or other future obligations or conditions which may affect all or any portion of the leased Tract, it shall not relieve the Lessee of the obligation to pay any bonus due thereon to the Louisiana State Mineral Board, nor shall the Louisiana State Mineral Board be obligated to refund any consideration paid by the Lessor prior to such modification, cancellation, or abrogation, including, but not limited to, bonuses, rentals and royalties.

NOTE: The State of Louisiana does hereby reserve, and this lease shall be subject to, the imprescriptible right of surface use in the nature of a servitude in favor of the Department of Natural Resources, including its Offices and Commissions, for the sole purpose of implementing, constructing, servicing and maintaining approved coastal zone management and/or restoration projects. Utilization of any and all rights derived under this lease by the mineral lessee, its agents, successors or assigns, shall not interfere with nor hinder the reasonable surface use by the Department of Natural Resources, its Offices or Commissions, as herein above reserved.

Applicant: Patrick L. Donohue Petroleum Properties, Inc.

Bidder	Cash Payment	Price/Acre	Rental	Oil	Gas	Other



P.O.B.
X=2,150,840.00
Y=509,520.00

ST JAMES PARISH

MISSISSIPPI RIVER

T11S - R3E

SL 16627

T12S - R16E

SL 18008



TRACT 36435 - St. Bernard Parish, Louisiana

All of the lands now or formerly constituting the beds and bottoms of all water bodies of every nature and description the title of which vests in the State of Louisiana, together with all islands arising therein and other lands formed by accretion or by reliction, where allowed by law, excepting tax adjudicated lands, and not presently under mineral lease on July 14, 2004, situated in St. Bernard Parish, Louisiana, and more particularly described as follows: Beginning at a point having Coordinates of X = 2,550,158.00 and Y = 440,900.00; thence North 3,855.00 feet to a point having Coordinates of X = 2,550,158.00 and Y = 444,755.00; thence North 30 degrees 41 minutes 50 seconds East 3,500.50 feet to a point having Coordinates of X = 2,551,945.00 and Y = 447,765.00; thence North 11 degrees 39 minutes 11 seconds East 2,128.88 feet to a point having Coordinates of X = 2,552,375.00 and Y = 449,850.00; thence North 14 degrees 54 minutes 53 seconds West 1,107.31 feet to a point having Coordinates of X = 2,552,090.00 and Y = 450,920.00; thence North 03 degrees 56 minutes 56 seconds West 2,493.25 feet to a point on the boundary of the Biloxi Wildlife Management Area having Coordinates of X = 2,551,918.30 and Y = 453,407.33; thence along the boundary of said Biloxi Wildlife Management Area the following courses and distances: North 88 degrees 32 minutes 49 seconds East 328.33 feet, North 01 degrees 22 minutes 42 seconds West 0.89 feet, North 88 degrees 42 minutes 31 seconds East 546.08 feet, Northerly, Northeasterly, Northerly, South 89 degrees 39 minutes 13 seconds West 207.33 feet, North 01 degrees 07 minutes 30 seconds West 1,219.82 feet, Northerly, Southeasterly, Easterly, Northeasterly, North 88 degrees 21 minutes 27 seconds East 601.05 feet, South 01 degrees 08 minutes 06 seconds East 1,517.46 feet, South 87 degrees 21 minutes 51 seconds West 3.78 feet, South 08 degrees 49 minutes 48 seconds East 0.62 feet, South 01 degrees 22 minutes 20 seconds East 470.80 feet, Northeasterly, Easterly, Southeasterly, Northeasterly, North 01 degrees 57 minutes 45 seconds West 82.85 feet, North 88 degrees 31 minutes 35 seconds East 3.14 feet, North 02 degrees 17 minutes 00 seconds West 716.73 feet, North 88 degrees 11 minutes 01 seconds East 1,332.58 feet, South 01 degrees 29 minutes 03 seconds East 725.37 feet, South 01 degrees 24 minutes 17 seconds East 1,331.88 feet, South 01 degrees 30 minutes 59 seconds East 478.98 feet, South 01 degrees 19 minutes 28 seconds East 1,440.28 feet, South 01 degrees 37 minutes 39 seconds East 744.50 feet, South 00 degrees 58 minutes 51 seconds East 5,341.81 feet, South 01 degrees 51 minutes 50 seconds East 1,843.90 feet, South 02 degrees 09 minutes 33 seconds East 141.85 feet, South 01 degrees 40 minutes 40 seconds East 454.59 feet, South 02 degrees 15 minutes 57 seconds East 130.95 feet, South 01 degrees 51 minutes 44 seconds East 2,585.82 feet, South 88 degrees 40 minutes 38 seconds West 1,296.36 feet, South 44 degrees 52 minutes 12 seconds West 5.23 feet, South 88 degrees 40 minutes 02 seconds West 994.30 feet, Southerly, Southwesterly, Northwesterly, Southwesterly, Northwesterly and Southerly to a point on the boundary of said Biloxi Wildlife Management Area having Coordinates of X = 2,553,171.20 and Y = 440,900.00; thence West 3,013.20 feet to the point of beginning, **LESS AND EXCEPT** any portion of the Biloxi Wildlife

Management Area that may lie within the above described tract, containing approximately **87 acres**, all as more particularly outlined on a plat on file in the Office of Mineral Resources, Department of Natural Resources. All bearings, distances and coordinates are based on Louisiana Coordinate System of 1927, (North or South Zone), where applicable.

NOTE: The above description of the Tract nominated for lease has been provided and corrected, where required, exclusively by the nomination party. Any mineral lease selected from this Tract and awarded by the Louisiana State Mineral Board shall be without warranty of any kind, either express, implied, or statutory, including, but not limited to, the implied warranties of merchantability and fitness for a particular purpose. Should the mineral lease awarded by the Louisiana State Mineral Board be subsequently modified, cancelled or abrogated due to the existence of conflicting leases, operating agreements, private claims or other future obligations or conditions which may affect all or any portion of the leased Tract, it shall not relieve the Lessee of the obligation to pay any bonus due thereon to the Louisiana State Mineral Board, nor shall the Louisiana State Mineral Board be obligated to refund any consideration paid by the Lessor prior to such modification, cancellation, or abrogation, including, but not limited to, bonuses, rentals and royalties.

NOTE: The Office of Mineral Resources will require a minimum bonus of \$230 per acre and a minimum royalty of 23%.

NOTE: The State of Louisiana does hereby reserve, and this lease shall be subject to, the imprescriptible right of surface use in the nature of a servitude in favor of the Department of Natural Resources, including its Offices and Commissions, for the sole purpose of implementing, constructing, servicing and maintaining approved coastal zone management and/or restoration projects. Utilization of any and all rights derived under this lease by the mineral lessee, its agents, successors or assigns, shall not interfere with nor hinder the reasonable surface use by the Department of Natural Resources, its Offices or Commissions, as herein above reserved.

NOTE: The Department of Wildlife and Fisheries has designated certain areas in the coastal waters of the State of Louisiana as Oyster Seed Bed Areas. The exact location of those Seed Bed Areas must be obtained from the Department of Wildlife and Fisheries and any work done under a mineral lease from the State of Louisiana may necessarily be conducted in conformity with the rules and regulations promulgated by the said Department of Wildlife and Fisheries for Oyster Seed Bed Areas.

Applicant: Kare-Sue Energy, Inc.

Bidder	Cash Payment	Price/Acre	Rental	Oil	Gas	Other



TRACT 36436 - St. Bernard Parish, Louisiana

All of the lands now or formerly constituting the beds and bottoms of all water bodies of every nature and description the title of which vests in the State of Louisiana, together with all islands arising therein and other lands formed by accretion or by reliction, where allowed by law, excepting tax adjudicated lands, and not presently under mineral lease on July 14, 2004, situated in St. Bernard Parish, Louisiana, and more particularly described as follows: Beginning at a point on the West boundary line of State Lease No. 17958 having Coordinates of X = 2,567,242.00 and Y = 440,900.00; thence West 4,156.58 feet to a point on the boundary of the Biloxi Wildlife Management Area having Coordinates of X = 2,563,085.42 and Y = 440,900.00; thence along the boundary of said Biloxi Wildlife Management Area the following courses and distances: North 02 degrees 12 minutes 43 seconds West 2,350.37 feet, North 87 degrees 59 minutes 04 seconds East 1,258.52 feet, North 04 degrees 09 minutes 00 seconds West 1,344.18 feet, North 04 degrees 08 minutes 59 seconds West 1,344.18 feet, North 87 degrees 11 minutes 37 seconds East 1,294.56 feet, North 03 degrees 22 minutes 30 seconds West 1,352.56 feet, North 03 degrees 22 minutes 29 seconds West 1,352.56 feet and North 86 degrees 26 minutes 46 seconds East 2,054.28 feet to the Northwest corner of said State Lease No. 17958 having Coordinates of X = 2,567,242.00 and Y = 448,865.36; thence South 7,965.36 feet along the West line of said State Lease No. 17958 to the point of beginning, **LESS AND EXCEPT** any portion of the Biloxi Wildlife Management Area that may lie within the above described tract, containing approximately **102 acres**, all as more particularly outlined on a plat on file in the Office of Mineral Resources, Department of Natural Resources. All bearings, distances and coordinates are based on Louisiana Coordinate System of 1927, (North or South Zone), where applicable.

NOTE: The above description of the Tract nominated for lease has been provided and corrected, where required, exclusively by the nomination party. Any mineral lease selected from this Tract and awarded by the Louisiana State Mineral Board shall be without warranty of any kind, either express, implied, or statutory, including, but not limited to, the implied warranties of merchantability and fitness for a particular purpose. Should the mineral lease awarded by the Louisiana State Mineral Board be subsequently modified, cancelled or abrogated due to the existence of conflicting leases, operating agreements, private claims or other future obligations or conditions which may affect all or any portion of the leased Tract, it shall not relieve the Lessee of the obligation to pay any bonus due thereon to the Louisiana State Mineral Board, nor shall the Louisiana State Mineral Board be obligated to refund any consideration paid by the Lessor prior to such modification, cancellation, or abrogation, including, but not limited to, bonuses, rentals and royalties.

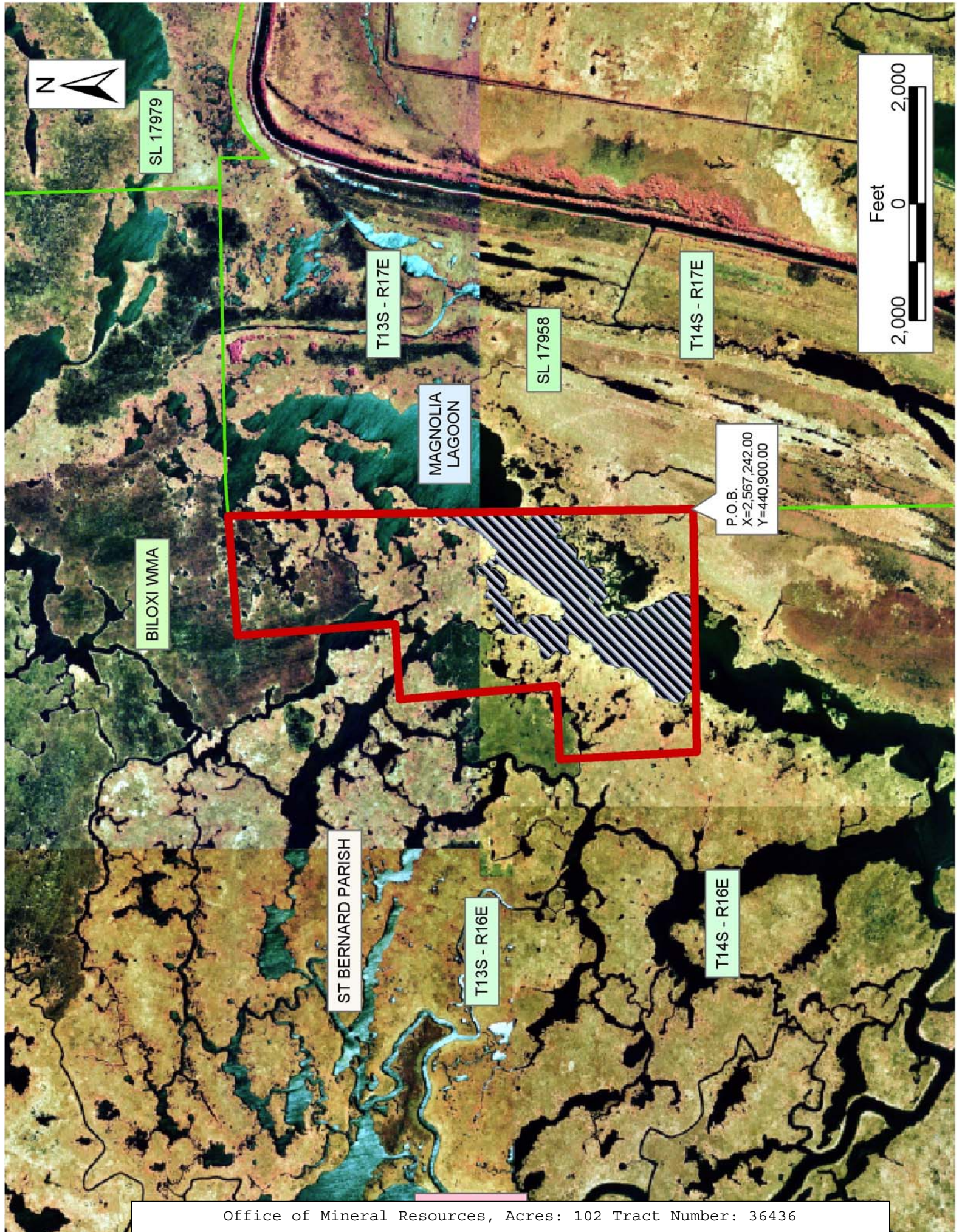
NOTE: The Office of Mineral Resources will require a minimum bonus of \$230 per acre and a minimum royalty of 23%.

NOTE: The State of Louisiana does hereby reserve, and this lease shall be subject to, the imprescriptible right of surface use in the nature of a servitude in favor of the Department of Natural Resources, including its Offices and Commissions, for the sole purpose of implementing, constructing, servicing and maintaining approved coastal zone management and/or restoration projects. Utilization of any and all rights derived under this lease by the mineral lessee, its agents, successors or assigns, shall not interfere with nor hinder the reasonable surface use by the Department of Natural Resources, its Offices or Commissions, as herein above reserved.

NOTE: The Department of Wildlife and Fisheries has designated certain areas in the coastal waters of the State of Louisiana as Oyster Seed Bed Areas. The exact location of those Seed Bed Areas must be obtained from the Department of Wildlife and Fisheries and any work done under a mineral lease from the State of Louisiana may necessarily be conducted in conformity with the rules and regulations promulgated by the said Department of Wildlife and Fisheries for Oyster Seed Bed Areas.

Applicant: Kare-Sue Energy, Inc.

Bidder	Cash Payment	Price/Acre	Rental	Oil	Gas	Other



SL 17979

T13S - R17E

SL 17958

T14S - R17E

MAGNOLIA LAGOON

BILOXI WMA

P.O.B.
X=-2,567,242.00
Y=440,900.00

ST BERNARD PARISH

T13S - R16E

T14S - R16E

TRACT 36437 - St. Bernard Parish, Louisiana

All of the lands now or formerly constituting the beds and bottoms of all water bodies of every nature and description the title of which vests in the State of Louisiana, together with all islands arising therein and other lands formed by accretion or by reliction, where allowed by law, excepting tax adjudicated lands, and not presently under mineral lease on July 14, 2004, situated in St. Bernard Parish, Louisiana, and more particularly described as follows: Beginning at a point on the West boundary of Block 47, Chandeleur Sound Area, having Coordinates of X = 2,591,100.00 and Y = 402,590.21; thence South 88 degrees 31 minutes 00 seconds West 3,023.91 feet to a point having Coordinates of X = 2,588,077.10 and Y = 402,511.94; thence North 4,865.98 feet to a point having Coordinates of X = 2,588,077.10 and Y = 407,377.92; thence East 3,022.90 feet to a point on said West boundary, having Coordinates of X = 2,591,100.00 and Y = 407,377.92; thence South 4,787.70 feet along said West boundary to the point of beginning, containing approximately **192 acres**, all as more particularly outlined on a plat on file in the Office of Mineral Resources, Department of Natural Resources. All bearings, distances and coordinates are based on Louisiana Coordinate System of 1927, (North or South Zone), where applicable.

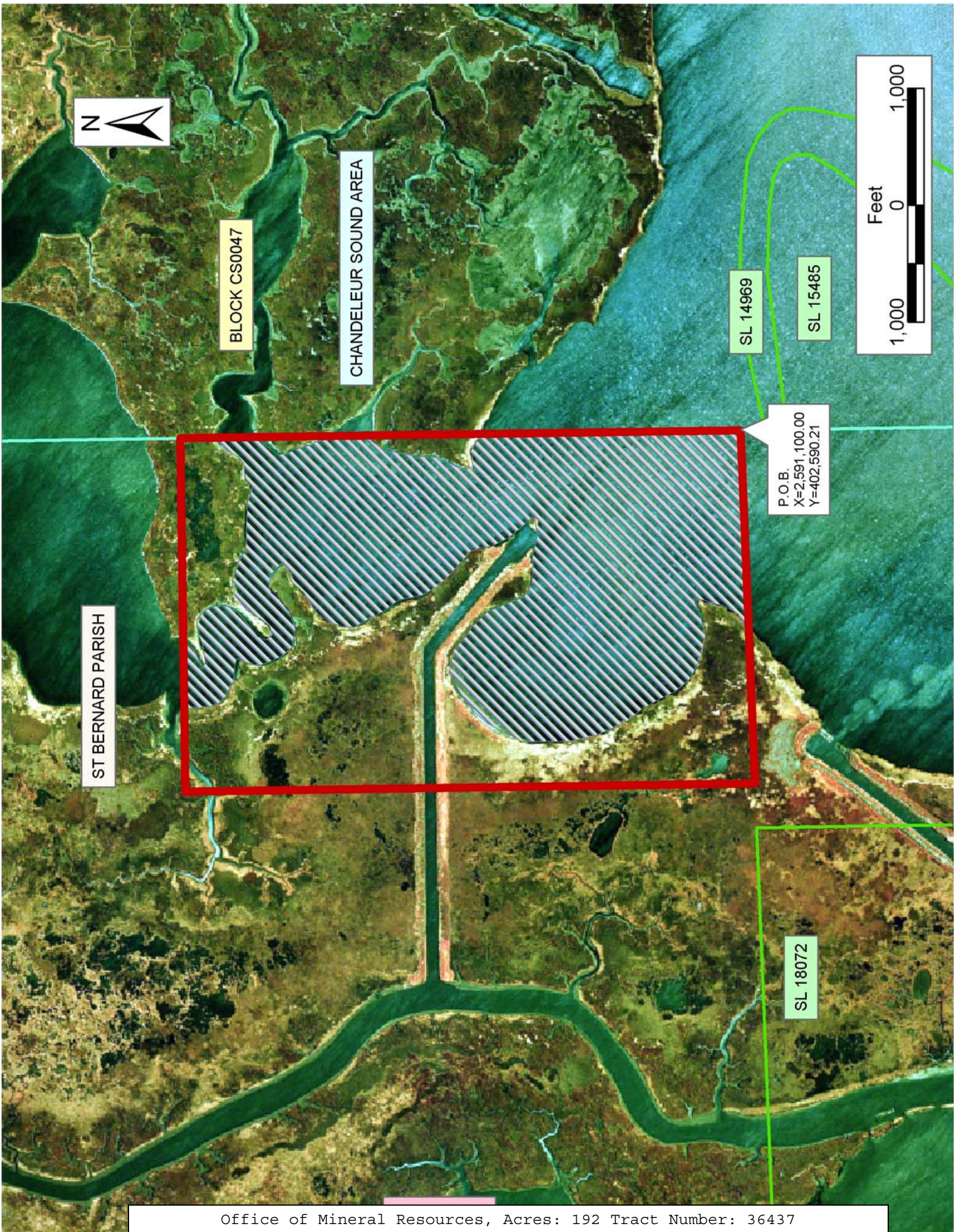
NOTE: The above description of the Tract nominated for lease has been provided and corrected, where required, exclusively by the nomination party. Any mineral lease selected from this Tract and awarded by the Louisiana State Mineral Board shall be without warranty of any kind, either express, implied, or statutory, including, but not limited to, the implied warranties of merchantability and fitness for a particular purpose. Should the mineral lease awarded by the Louisiana State Mineral Board be subsequently modified, cancelled or abrogated due to the existence of conflicting leases, operating agreements, private claims or other future obligations or conditions which may affect all or any portion of the leased Tract, it shall not relieve the Lessee of the obligation to pay any bonus due thereon to the Louisiana State Mineral Board, nor shall the Louisiana State Mineral Board be obligated to refund any consideration paid by the Lessor prior to such modification, cancellation, or abrogation, including, but not limited to, bonuses, rentals and royalties.

NOTE: The State of Louisiana does hereby reserve, and this lease shall be subject to, the imprescriptible right of surface use in the nature of a servitude in favor of the Department of Natural Resources, including its Offices and Commissions, for the sole purpose of implementing, constructing, servicing and maintaining approved coastal zone management and/or restoration projects. Utilization of any and all rights derived under this lease by the mineral lessee, its agents, successors or assigns, shall not interfere with nor hinder the reasonable surface use by the Department of Natural Resources, its Offices or Commissions, as herein above reserved.

NOTE: The Department of Wildlife and Fisheries has designated certain areas in the coastal waters of the State of Louisiana as Oyster Seed Bed Areas. The exact location of those Seed Bed Areas must be obtained from the Department of Wildlife and Fisheries and any work done under a mineral lease from the State of Louisiana may necessarily be conducted in conformity with the rules and regulations promulgated by the said Department of Wildlife and Fisheries for Oyster Seed Bed Areas.

Applicant: Mineral Services, Inc.

Bidder	Cash Payment	Price/Acre	Rental	Oil	Gas	Other



TRACT 36438 - Portion of Block 47, Chandeleur Sound Area, St. Bernard Parish, Louisiana

All of the lands now or formerly constituting the beds and bottoms of all water bodies of every nature and description the title of which vests in the State of Louisiana, together with all islands arising therein and other lands formed by accretion or by reliction, where allowed by law, excepting tax adjudicated lands, and not presently under mineral lease on July 14, 2004, situated in St. Bernard Parish, Louisiana, and more particularly described as follows: Beginning at a point within Block 47, Chandeleur Sound Area, having Coordinates of X = 2,594,877.51 and Y = 402,590.21; thence North 2,584.99 feet to a point having Coordinates of X = 2,594,877.51 and Y = 405,175.20; thence East 3,597.49 feet to a point having Coordinates of X = 2,598,475.00 and Y = 405,175.20; thence South 2,584.99 feet to a point having Coordinates of X = 2,598,475.00 and Y = 402,590.21; thence West 3,597.49 feet to the point of beginning, containing approximately **29 acres**, all as more particularly outlined on a plat on file in the Office of Mineral Resources, Department of Natural Resources. All bearings, distances and coordinates are based on Louisiana Coordinate System of 1927, (North or South Zone), where applicable.

NOTE: The above description of the Tract nominated for lease has been provided and corrected, where required, exclusively by the nomination party. Any mineral lease selected from this Tract and awarded by the Louisiana State Mineral Board shall be without warranty of any kind, either express, implied, or statutory, including, but not limited to, the implied warranties of merchantability and fitness for a particular purpose. Should the mineral lease awarded by the Louisiana State Mineral Board be subsequently modified, cancelled or abrogated due to the existence of conflicting leases, operating agreements, private claims or other future obligations or conditions which may affect all or any portion of the leased Tract, it shall not relieve the Lessee of the obligation to pay any bonus due thereon to the Louisiana State Mineral Board, nor shall the Louisiana State Mineral Board be obligated to refund any consideration paid by the Lessor prior to such modification, cancellation, or abrogation, including, but not limited to, bonuses, rentals and royalties.

NOTE: The State of Louisiana does hereby reserve, and this lease shall be subject to, the imprescriptible right of surface use in the nature of a servitude in favor of the Department of Natural Resources, including its Offices and Commissions, for the sole purpose of implementing, constructing, servicing and maintaining approved coastal zone management and/or restoration projects. Utilization of any and all rights derived under this lease by the mineral lessee, its agents, successors or assigns, shall not interfere with nor hinder the reasonable surface use by the Department of Natural Resources, its Offices or Commissions, as herein above reserved.

NOTE: The Department of Wildlife and Fisheries has designated certain areas in the coastal waters of the State of Louisiana as Oyster Seed Bed

Areas. The exact location of those Seed Bed Areas must be obtained from the Department of Wildlife and Fisheries and any work done under a mineral lease from the State of Louisiana may necessarily be conducted in conformity with the rules and regulations promulgated by the said Department of Wildlife and Fisheries for Oyster Seed Bed Areas.

Applicant: Mineral Services, Inc.

Bidder	Cash Payment	Price/Acre	Rental	Oil	Gas	Other



ST BERNARD PARISH



BLOCK CS0047

CHANDELEUR SOUND AREA

T15S - R17E

P.O.B.
X=2,594,877.51
Y=402,590.21

SL 15485

SL 14969

TRACT 36439 - Portion of Block 47, Chandeleur Sound Area, St. Bernard Parish, Louisiana

All of the lands now or formerly constituting the beds and bottoms of all water bodies of every nature and description the title of which vests in the State of Louisiana, together with all islands arising therein and other lands formed by accretion or by reliction, where allowed by law, excepting tax adjudicated lands, and not presently under mineral lease on July 14, 2004, situated in St. Bernard Parish, Louisiana, and more particularly described as follows: Beginning at a point within Block 47, Chandeleur Sound Area, having Coordinates of X = 2,594,877.51 and Y = 402,590.21; thence East 3,597.49 feet to a point having Coordinates of X = 2,598,475.00 and Y = 402,590.21; thence South 590.21 feet to the Northwest corner of State Lease No. 4039, as amended, having Coordinates of X = 2,598,475.00 and Y = 402,000.00; thence South 5,920.00 feet along the West line of said State Lease No. 4039, to its Southwest corner, also being a point on the South line of said Block 47, having Coordinates of X = 2,598,475.00 and Y = 396,080.00; thence West 3,597.49 feet along said South line to a point having Coordinates of X = 2,594,877.51 and Y = 396,080.00; thence North 6,510.21 feet to the point of beginning, containing approximately **476 acres**, all as more particularly outlined on a plat on file in the Office of Mineral Resources, Department of Natural Resources. All bearings, distances and coordinates are based on Louisiana Coordinate System of 1927, (North or South Zone), where applicable.

NOTE: The above description of the Tract nominated for lease has been provided and corrected, where required, exclusively by the nomination party. Any mineral lease selected from this Tract and awarded by the Louisiana State Mineral Board shall be without warranty of any kind, either express, implied, or statutory, including, but not limited to, the implied warranties of merchantability and fitness for a particular purpose. Should the mineral lease awarded by the Louisiana State Mineral Board be subsequently modified, cancelled or abrogated due to the existence of conflicting leases, operating agreements, private claims or other future obligations or conditions which may affect all or any portion of the leased Tract, it shall not relieve the Lessee of the obligation to pay any bonus due thereon to the Louisiana State Mineral Board, nor shall the Louisiana State Mineral Board be obligated to refund any consideration paid by the Lessor prior to such modification, cancellation, or abrogation, including, but not limited to, bonuses, rentals and royalties.

NOTE: The State of Louisiana does hereby reserve, and this lease shall be subject to, the imprescriptible right of surface use in the nature of a servitude in favor of the Department of Natural Resources, including its Offices and Commissions, for the sole purpose of implementing, constructing, servicing and maintaining approved coastal zone management and/or restoration projects. Utilization of any and all rights derived under this lease by the mineral lessee, its agents, successors or assigns, shall not interfere with nor hinder the reasonable surface use by the

Department of Natural Resources, its Offices or Commissions, as herein above reserved.

NOTE: The Department of Wildlife and Fisheries has designated certain areas in the coastal waters of the State of Louisiana as Oyster Seed Bed Areas. The exact location of those Seed Bed Areas must be obtained from the Department of Wildlife and Fisheries and any work done under a mineral lease from the State of Louisiana may necessarily be conducted in conformity with the rules and regulations promulgated by the said Department of Wildlife and Fisheries for Oyster Seed Bed Areas.

Applicant: Mineral Services, Inc.

Bidder	Cash Payment	Price/Acre	Rental	Oil	Gas	Other



ST BERNARD PARISH

T15S - R17E

CHANDELEUR SOUND AREA

SL 4039



P.O.B.
X=2,594,877.51
Y=402,590.21

SL 15485

SL 14969

BLOCK CS0047

TRACT 36440 - St. Bernard Parish, Louisiana

All of the lands now or formerly constituting the beds and bottoms of all water bodies of every nature and description the title of which vests in the State of Louisiana, together with all islands arising therein and other lands formed by accretion or by reliction, where allowed by law, excepting tax adjudicated lands, and not presently under mineral lease on July 14, 2004, situated in St. Bernard Parish, Louisiana, and more particularly described as follows: Beginning at a point on the West line of Block 47, Chandeleur Sound Area, having Coordinates of X = 2,591,100.00 and Y = 398,330.10; thence West 3,400.00 feet to a point on the East line of State Lease No. 18072, having Coordinates of X = 2,587,700.00 and Y = 398,330.10; thence North 2,952.96 feet along said East line to a point having Coordinates of X = 2,587,700.00 and Y = 401,283.06; thence North 64 degrees 10 minutes 43 seconds East 555.46 feet to a point having Coordinates of X = 2,588,200.00 and Y = 401,525.00; thence North 73 degrees 32 minutes 25 seconds East 1,147.02 feet to a point having Coordinates of X = 2,589,300.01 and Y = 401,850.00; thence North 78 degrees 51 minutes 17 seconds East 489.15 feet to a point having Coordinates of X = 2,589,779.93 and Y = 401,944.55; thence North 78 degrees 51 minutes 18 seconds East 1,218.04 feet to a point having Coordinates of X = 2,590,975.00 and Y = 402,179.99; thence North 83 degrees 44 minutes 43 seconds East 125.75 feet to the Northwest Corner of State Lease No. 15485, having Coordinates of X = 2,591,100.00 and Y = 402,193.69; thence South 2,408.69 feet to the Southwest corner of said State Lease No. 15485, having Coordinates of X = 2,591,100.00 and Y = 399,785.00; thence South 1,454.90 feet to the point of beginning, containing approximately **200 acres**, all as more particularly outlined on a plat on file in the Office of Mineral Resources, Department of Natural Resources. All bearings, distances and coordinates are based on Louisiana Coordinate System of 1927, (North or South Zone), where applicable.

NOTE: The above description of the Tract nominated for lease has been provided and corrected, where required, exclusively by the nomination party. Any mineral lease selected from this Tract and awarded by the Louisiana State Mineral Board shall be without warranty of any kind, either express, implied, or statutory, including, but not limited to, the implied warranties of merchantability and fitness for a particular purpose. Should the mineral lease awarded by the Louisiana State Mineral Board be subsequently modified, cancelled or abrogated due to the existence of conflicting leases, operating agreements, private claims or other future obligations or conditions which may affect all or any portion of the leased Tract, it shall not relieve the Lessee of the obligation to pay any bonus due thereon to the Louisiana State Mineral Board, nor shall the Louisiana State Mineral Board be obligated to refund any consideration paid by the Lessor prior to such modification, cancellation, or abrogation, including, but not limited to, bonuses, rentals and royalties.

NOTE: The State of Louisiana does hereby reserve, and this lease shall be subject to, the imprescriptible right of surface use in the nature of a

servitude in favor of the Department of Natural Resources, including its Offices and Commissions, for the sole purpose of implementing, constructing, servicing and maintaining approved coastal zone management and/or restoration projects. Utilization of any and all rights derived under this lease by the mineral lessee, its agents, successors or assigns, shall not interfere with nor hinder the reasonable surface use by the Department of Natural Resources, its Offices or Commissions, as herein above reserved.

NOTE: The Department of Wildlife and Fisheries has designated certain areas in the coastal waters of the State of Louisiana as Oyster Seed Bed Areas. The exact location of those Seed Bed Areas must be obtained from the Department of Wildlife and Fisheries and any work done under a mineral lease from the State of Louisiana may necessarily be conducted in conformity with the rules and regulations promulgated by the said Department of Wildlife and Fisheries for Oyster Seed Bed Areas.

Applicant: Mineral Services, Inc.

Bidder	Cash Payment	Price/Acre	Rental	Oil	Gas	Other

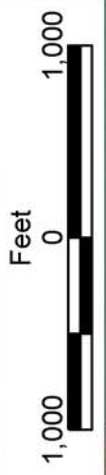


SL 15485

BLOCK CS0047

P.O.B.
X=2,591,100.00
Y=398,330.10

CHANDELEUR SOUND AREA



ST BERNARD PARISH



SL 18073

T15S - R17E

SL 18072