

TRACT 36418 - Portion of Block 26, Breton Sound Area, Plaquemines Parish, Louisiana

The beds and bottoms of all water bodies belonging to the State of Louisiana located in that portion of Block 26, Breton Sound Area, together with any present lands formed by accretion to the shoreline, located in Plaquemines Parish, Louisiana, and not presently under mineral lease on July 14, 2004, the geographical area of which is more fully described as follows: Beginning at the Southeast corner of Block 26, Breton Sound Area, having Coordinates of X = 2,738,600.00 and Y = 322,330.00; Thence West 14,750.00 feet along the South boundary of said Block 26 to its Southwest corner having Coordinates of X = 2,723,850.00 and Y = 322,330.00; Thence North 7,375.00 feet along the West boundary of said Block 26 to a point having Coordinates of X = 2,723,850.00 and Y = 329,705.00; Thence East 14,750.00 feet to a point on the East boundary of said Block 26 having Coordinates of X = 2,738,600.00 and Y = 329,705.00; Thence South 7,375.00 feet along the said East boundary of said Block 26 to the point of beginning, containing approximately **2,497.27 acres**, all as more particularly outlined on a plat on file in the Office of Mineral Resources, Department of Natural Resources. All bearings, distances and coordinates are based on Louisiana Coordinate System of 1927, (North or South Zone).

NOTE: The above description of the Tract nominated for lease has been provided and corrected, where required, exclusively by the nomination party. Any mineral lease selected from this Tract and awarded by the Louisiana State Mineral Board shall be without warranty of any kind, either express, implied, or statutory, including, but not limited to, the implied warranties of merchantability and fitness for a particular purpose. Should the mineral lease awarded by the Louisiana State Mineral Board be subsequently modified, cancelled or abrogated due to the existence of conflicting leases, operating agreements, private claims or other future obligations or conditions which may affect all or any portion of the leased Tract, it shall not relieve the Lessee of the obligation to pay any bonus due thereon to the Louisiana State Mineral Board, nor shall the Louisiana State Mineral Board be obligated to refund any consideration paid by the Lessor prior to such modification, cancellation, or abrogation, including, but not limited to, bonuses, rentals and royalties.

NOTE: The State of Louisiana does hereby reserve, and this lease shall be subject to, the imprescriptible right of surface use in the nature of a servitude in favor of the Department of Natural Resources, including its Offices and Commissions, for the sole purpose of implementing, constructing, servicing and maintaining approved coastal zone management and/or restoration projects. Utilization of any and all rights derived under this lease by the mineral lessee, its agents, successors or assigns, shall not interfere with nor hinder the reasonable surface use by the Department of Natural Resources, its Offices or Commissions, as herein above reserved.

Applicant: Oil And Gas Resources, Inc.

Bidder	Cash Payment	Price/Acre	Rental	Oil	Gas	Other

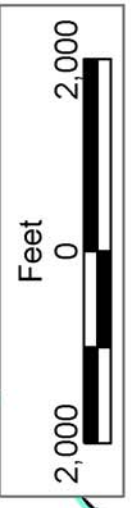


SL 17063

LA

US

P.O.B.
X=2,738,600.00
Y=322,330.00



PLAQUEMINES PARISH

BLOCK BS0026

BRETON SOUND AREA

BLOCK BS0039

TRACT 36419 - Portion of Block 25, Breton Sound Area, Plaquemines Parish, Louisiana

The beds and bottoms of all water bodies belonging to the State of Louisiana located in that portion of Block 25, Breton Sound Area, together with any present lands formed by accretion to the shoreline, located in Plaquemines Parish, Louisiana, and not presently under mineral lease on July 14, 2004, the geographical area of which is more fully described as follows: Beginning at the Southwest corner of Block 25, Breton Sound Area, having Coordinates of X = 2,738,600.00 and Y = 322,330.00; Thence North 7,375.00 feet along the West boundary of said Block 25 to the Southwest corner of State Lease No. 17063 having Coordinates of X = 2,738,600.00 and Y = 329,705.00; Thence East 8,611.25 feet along the South boundary of said State Lease No. 17063 to its Southeast corner on the three mile line having Coordinates of X = 2,747,211.25 and Y = 329,705.00; Thence along the said three mile line the following courses: Southwesterly to a point having Coordinates of X = 2,742,173 and Y = 323,079; Southwesterly on an arc having a radius of 18,240.60 feet and a center at X = 2,727,653 and Y = 334,120 to a point having Coordinates X = 2,741,983 and Y = 322,834; Southwesterly to a point on the South boundary of said Block 25 having Coordinates of X = 2,741,586.04 and Y = 322,330.00; Thence West 2,986.04 feet along the said South boundary of said Block 25 to the point of beginning, containing approximately **983.10 acres, LESS AND EXCEPT** that portion thereof, if any, lying seaward of the line three nautical miles from the coast line of Louisiana, as said three mile line has been decreed by the Supreme Court of the United States, as determined by a Special Master appointed therein, in litigation styled **United States v. State of Louisiana et al No. 9 Original**, in 1975, all as more particularly outlined on a plat in the Office of Mineral Resources, Department of Natural Resources. All bearings, distances and coordinates are based on the Louisiana Coordinate System of 1927, (South Zone).

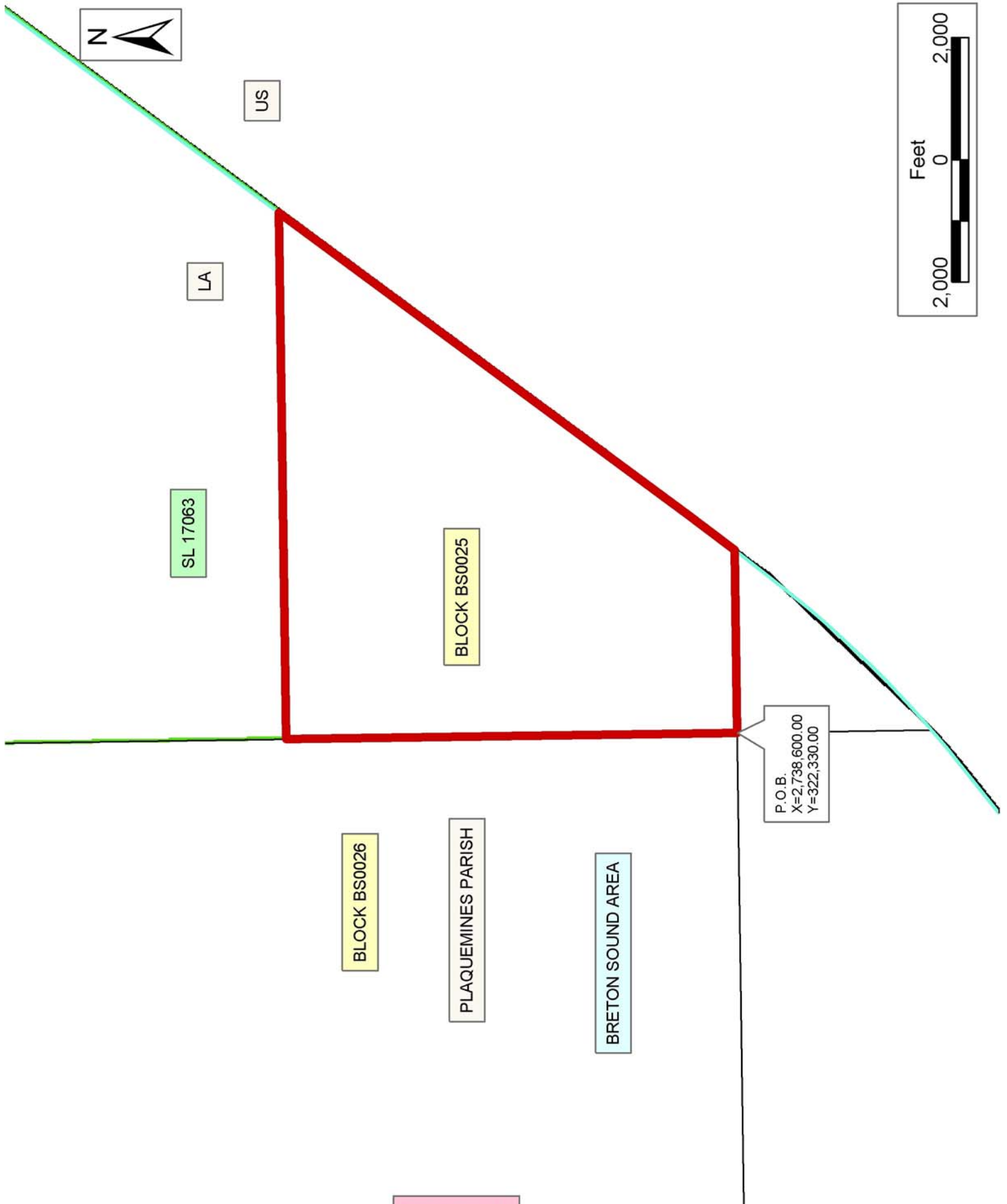
NOTE: The above description of the Tract nominated for lease has been provided and corrected, where required, exclusively by the nomination party. Any mineral lease selected from this Tract and awarded by the Louisiana State Mineral Board shall be without warranty of any kind, either express, implied, or statutory, including, but not limited to, the implied warranties of merchantability and fitness for a particular purpose. Should the mineral lease awarded by the Louisiana State Mineral Board be subsequently modified, cancelled or abrogated due to the existence of conflicting leases, operating agreements, private claims or other future obligations or conditions which may affect all or any portion of the leased Tract, it shall not relieve the Lessee of the obligation to pay any bonus due thereon to the Louisiana State Mineral Board, nor shall the Louisiana State Mineral Board be obligated to refund any consideration paid by the Lessor prior to such modification, cancellation, or abrogation, including, but not limited to, bonuses, rentals and royalties.

NOTE: The State of Louisiana does hereby reserve, and this lease shall be subject to, the imprescriptible right of surface use in the nature of a

servitude in favor of the Department of Natural Resources, including its Offices and Commissions, for the sole purpose of implementing, constructing, servicing and maintaining approved coastal zone management and/or restoration projects. Utilization of any and all rights derived under this lease by the mineral lessee, its agents, successors or assigns, shall not interfere with nor hinder the reasonable surface use by the Department of Natural Resources, its Offices or Commissions, as herein above reserved.

Applicant: Oil And Gas Resources, Inc.

Bidder	Cash Payment	Price/Acre	Rental	Oil	Gas	Other



TRACT 36420 - Portion of Block 10, Vermilion Area, Revised, Vermilion Parish, Louisiana

The beds and bottoms of all water bodies belonging to the State of Louisiana located in that portion of Block 10, Vermilion Area, Revised, together with any present lands formed by accretion to the shoreline, located in Vermilion Parish, Louisiana, and not presently under mineral lease on July 14, 2004, the geographical area of which is more fully described as follows: Beginning at a point within Block 10, Vermilion Area, Revised, having Coordinates of X = 1,723,565.00 and Y = 322,265.00; Thence North 5,714.53 feet to a point on the Coastline as defined by the report of the Special Master and set forth in the judgment decree in June of 1975 by the Supreme Court of the United States in the litigation styled United States v. State of Louisiana, et al No. 9 Original, having Coordinates of X = 1,723,565.00 and Y = 327,979.53; Thence along the said Coastline the following courses: Northeasterly along a straight line to a point having Coordinates of X = 1,724,713.00 and Y = 328,326.00, Northeasterly along a straight line to a point having Coordinates of X = 1,726,542.00 and Y = 329,268.00, Northeasterly along a straight line to a point having Coordinates of X = 1,728,865.00 and Y = 330,144.34; Thence South 7,879.34 feet to a point having Coordinates of X = 1,728,865.00 and Y = 322,265.00; Thence West 5,300.00 feet to the point of beginning containing approximately **826.26 acres**, all as more particularly outlined on a plat on file in the Office of Mineral Resources, Department of Natural Resources. All bearings, distances and coordinates are based on Louisiana Coordinate System of 1927, (North or South Zone).

NOTE: The above description of the Tract nominated for lease has been provided and corrected, where required, exclusively by the nomination party. Any mineral lease selected from this Tract and awarded by the Louisiana State Mineral Board shall be without warranty of any kind, either express, implied, or statutory, including, but not limited to, the implied warranties of merchantability and fitness for a particular purpose. Should the mineral lease awarded by the Louisiana State Mineral Board be subsequently modified, cancelled or abrogated due to the existence of conflicting leases, operating agreements, private claims or other future obligations or conditions which may affect all or any portion of the leased Tract, it shall not relieve the Lessee of the obligation to pay any bonus due thereon to the Louisiana State Mineral Board, nor shall the Louisiana State Mineral Board be obligated to refund any consideration paid by the Lessor prior to such modification, cancellation, or abrogation, including, but not limited to, bonuses, rentals and royalties.

NOTE: The State of Louisiana does hereby reserve, and this lease shall be subject to, the imprescriptible right of surface use in the nature of a servitude in favor of the Department of Natural Resources, including its Offices and Commissions, for the sole purpose of implementing, constructing, servicing and maintaining approved coastal zone management and/or restoration projects. Utilization of any and all rights derived under this lease by the mineral lessee, its agents, successors or assigns,

shall not interfere with nor hinder the reasonable surface use by the Department of Natural Resources, its Offices or Commissions, as herein above reserved.

NOTE: The Department of Wildlife and Fisheries has designated certain areas in the coastal waters of the State of Louisiana as Oyster Seed Bed Areas. The exact location of those Seed Bed Areas must be obtained from the Department of Wildlife and Fisheries and any work done under a mineral lease from the State of Louisiana may necessarily be conducted in conformity with the rules and regulations promulgated by the said Department of Wildlife and Fisheries for Oyster Seed Bed Areas.

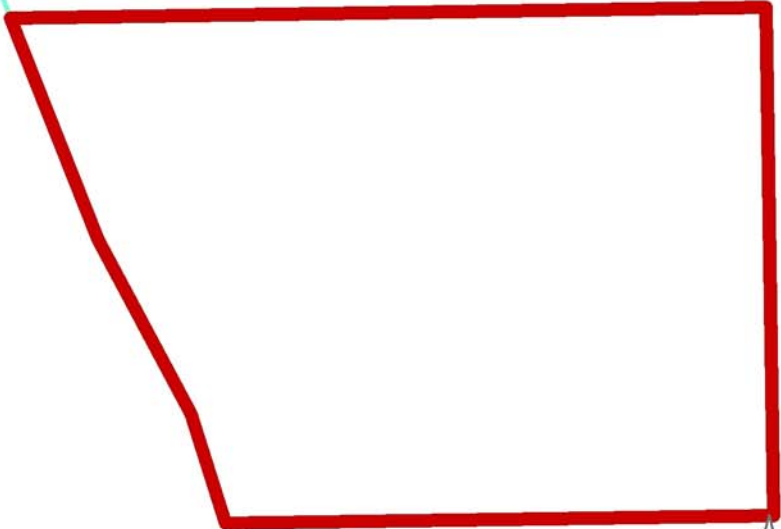
Applicant: Woodland Petroleum Corporation

Bidder	Cash Payment	Price/Acre	Rental	Oil	Gas	Other



VERMILION PARISH

BLOCK VR0010



VERMILION AREA, REVISED

P.O.B.
X=1,723,565.00
Y=322,265.00

BLOCK VR0009



TRACT 36421 - Portion of Block 10, Vermilion Area, Revised, Vermilion Parish, Louisiana

The beds and bottoms of all water bodies belonging to the State of Louisiana located in that portion of Block 10, Vermilion Area, Revised, together with any present lands formed by accretion to the shoreline, located in Vermilion Parish, Louisiana, and not presently under mineral lease on July 14, 2004, the geographical area of which is more fully described as follows: Beginning at a point on the South boundary of Block 10, Vermilion Area, Revised, having Coordinates of X = 1,726,215.00 and Y = 318,182.82; Thence North 4,082.18 feet to a point having Coordinates of X = 1,726,215.00 and Y = 322,265.00; Thence East 2,650.00 feet to a point having Coordinates of X = 1,728,865.00 and Y = 322,265.00; Thence North 7,879.34 feet to a point on the Coastline as defined by the report of the Special Master and set forth in the judgment decree in June of 1975 by the Supreme Court of the United States in the litigation styled United States v. State of Louisiana, et al No. 9 Original, having Coordinates of X = 1,728,865.00 and Y = 330,144.34; Thence East 2,650.00 feet to a point having Coordinates of X = 1,731,515.00 and Y = 330,144.34; Thence South 11,961.52 feet to a point on the said South boundary of Block 10, having Coordinates of X = 1,731,515.00 and Y = 318,182.82; Thence West 5,300.00 feet along the said South boundary of Block 10, to the point of beginning containing approximately **976.03 acres**, all as more particularly outlined on a plat on file in the Office of Mineral Resources, Department of Natural Resources. All bearings, distances and coordinates are based on Louisiana Coordinate System of 1927, (North or South Zone).

NOTE: The above description of the Tract nominated for lease has been provided and corrected, where required, exclusively by the nomination party. Any mineral lease selected from this Tract and awarded by the Louisiana State Mineral Board shall be without warranty of any kind, either express, implied, or statutory, including, but not limited to, the implied warranties of merchantability and fitness for a particular purpose. Should the mineral lease awarded by the Louisiana State Mineral Board be subsequently modified, cancelled or abrogated due to the existence of conflicting leases, operating agreements, private claims or other future obligations or conditions which may affect all or any portion of the leased Tract, it shall not relieve the Lessee of the obligation to pay any bonus due thereon to the Louisiana State Mineral Board, nor shall the Louisiana State Mineral Board be obligated to refund any consideration paid by the Lessor prior to such modification, cancellation, or abrogation, including, but not limited to, bonuses, rentals and royalties.

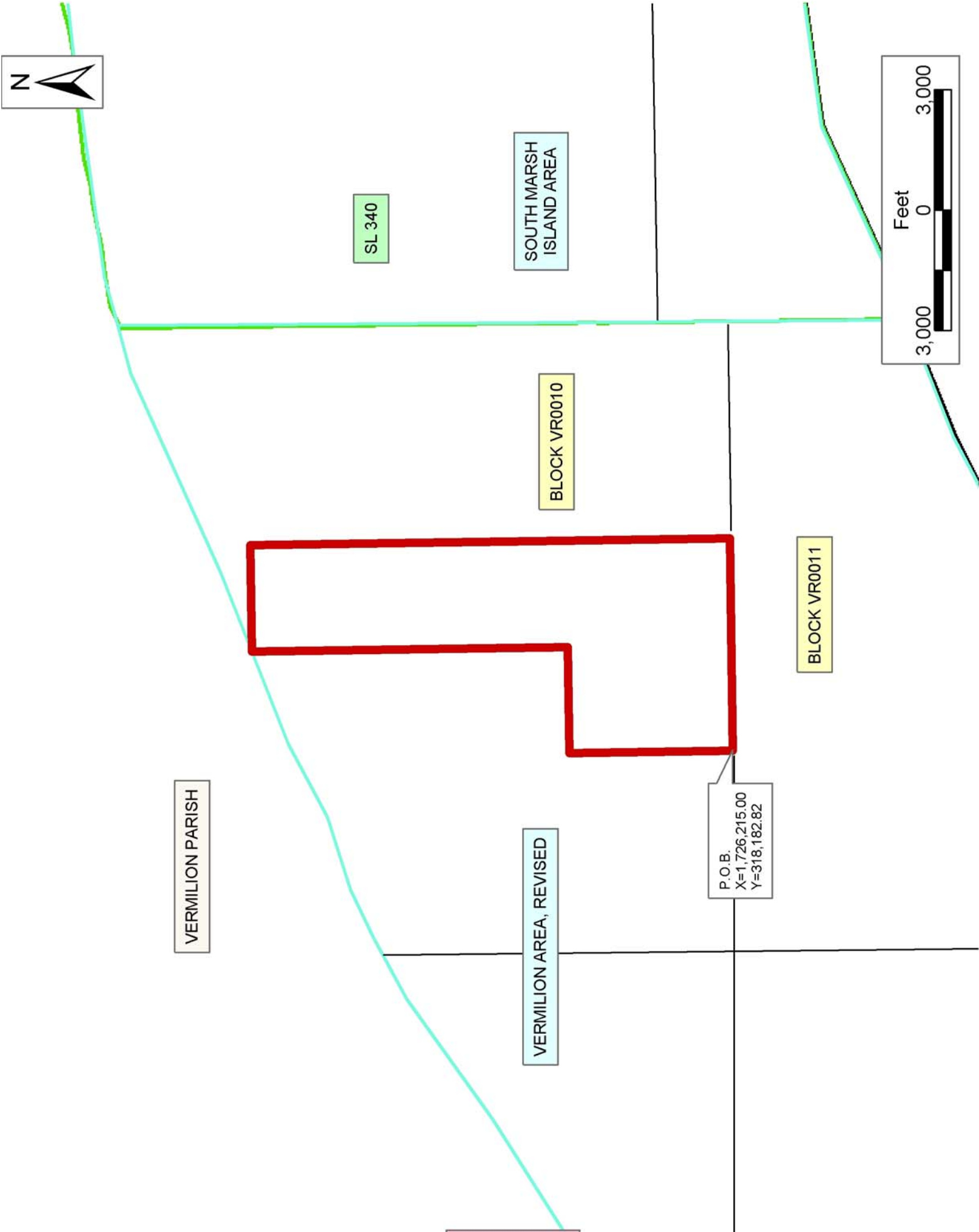
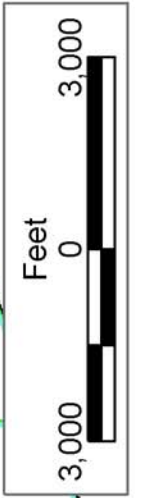
NOTE: The State of Louisiana does hereby reserve, and this lease shall be subject to, the imprescriptible right of surface use in the nature of a servitude in favor of the Department of Natural Resources, including its Offices and Commissions, for the sole purpose of implementing, constructing, servicing and maintaining approved coastal zone management and/or restoration projects. Utilization of any and all rights derived under this lease by the mineral lessee, its agents, successors or assigns,

shall not interfere with nor hinder the reasonable surface use by the Department of Natural Resources, its Offices or Commissions, as herein above reserved.

NOTE: The Department of Wildlife and Fisheries has designated certain areas in the coastal waters of the State of Louisiana as Oyster Seed Bed Areas. The exact location of those Seed Bed Areas must be obtained from the Department of Wildlife and Fisheries and any work done under a mineral lease from the State of Louisiana may necessarily be conducted in conformity with the rules and regulations promulgated by the said Department of Wildlife and Fisheries for Oyster Seed Bed Areas.

Applicant: Woodland Petroleum Corporation

Bidder	Cash Payment	Price/Acre	Rental	Oil	Gas	Other



TRACT 36422 - Portion of Blocks 10, and 9, Vermilion Area, Revised, Vermilion Parish, Louisiana

The beds and bottoms of all water bodies belonging to the State of Louisiana located in that portion of Blocks 10, and 9, Vermilion Area, Revised, together with any present lands formed by accretion to the shoreline, located in Vermilion Parish, Louisiana, and not presently under mineral lease on July 14, 2004, the geographical area of which is more fully described as follows: Beginning at a point within Block 10, Vermilion Area, Revised, having Coordinates of X = 1,723,565.00 and Y = 322,265.00; Thence West 2,392.59 feet to a point on the West boundary of Block 10, said point also being on the East boundary of Block 9, having Coordinates of X = 1,721,172.41 and Y = 322,265.00; Thence West 2,859.41 feet to a point having Coordinates of X = 1,718,313.00 and Y = 322,265.00; Thence North 2,869.69 feet to a point on the Coastline as defined by the report of the Special Master and set forth in the judgment decree in June of 1975 by the Supreme Court of the United States in the litigation styled United States v. State of Louisiana, et al No. 9 Original, having Coordinates of X = 1,718,313.00 and Y = 325,134.69; Thence along the said Coastline the following courses: Northeasterly along a straight line to a point having Coordinates of X = 1,720,140.00 and Y = 326,402.00, Northeasterly along a straight line to a point, said point also being the Northeast corner of said Block 9, and the Northwest corner of said Block 10, having Coordinates of X = 1,721,172.41 and Y = 326,945.66, Northeasterly along a straight line to a point having Coordinates of X = 1,721,682.00 and Y = 327,214.00, Northeasterly along a straight line to a point having Coordinates of X = 1,722,884.00 and Y = 327,774.00, Northeasterly along a straight line to a point having Coordinates of X = 1,723,565.00 and Y = 327,979.53; Thence South 5,714.53 feet to the point of beginning containing approximately **539.78 acres**, all as more particularly outlined on a plat on file in the Office of Mineral Resources, Department of Natural Resources. All bearings, distances and coordinates are based on Louisiana Coordinate System of 1927, (North or South Zone).

NOTE: The above description of the Tract nominated for lease has been provided and corrected, where required, exclusively by the nomination party. Any mineral lease selected from this Tract and awarded by the Louisiana State Mineral Board shall be without warranty of any kind, either express, implied, or statutory, including, but not limited to, the implied warranties of merchantability and fitness for a particular purpose. Should the mineral lease awarded by the Louisiana State Mineral Board be subsequently modified, cancelled or abrogated due to the existence of conflicting leases, operating agreements, private claims or other future obligations or conditions which may affect all or any portion of the leased Tract, it shall not relieve the Lessee of the obligation to pay any bonus due thereon to the Louisiana State Mineral Board, nor shall the Louisiana State Mineral Board be obligated to refund any consideration paid by the Lessor prior to such modification, cancellation, or abrogation, including, but not limited to, bonuses, rentals and royalties.

NOTE: The State of Louisiana does hereby reserve, and this lease shall be subject to, the imprescriptible right of surface use in the nature of a servitude in favor of the Department of Natural Resources, including its Offices and Commissions, for the sole purpose of implementing, constructing, servicing and maintaining approved coastal zone management and/or restoration projects. Utilization of any and all rights derived under this lease by the mineral lessee, its agents, successors or assigns, shall not interfere with nor hinder the reasonable surface use by the Department of Natural Resources, its Offices or Commissions, as herein above reserved.

NOTE: The Department of Wildlife and Fisheries has designated certain areas in the coastal waters of the State of Louisiana as Oyster Seed Bed Areas. The exact location of those Seed Bed Areas must be obtained from the Department of Wildlife and Fisheries and any work done under a mineral lease from the State of Louisiana may necessarily be conducted in conformity with the rules and regulations promulgated by the said Department of Wildlife and Fisheries for Oyster Seed Bed Areas.

Applicant: Woodland Petroleum Corporation

Bidder	Cash Payment	Price/Acre	Rental	Oil	Gas	Other



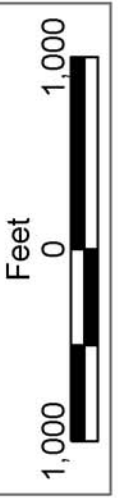
VERMILION PARISH

VERMILION AREA, REVISED

P.O.B.
X=1,723,565.00
Y=322,265.00

BLOCK VR0010

BLOCK VR0009



TRACT 36423 - Portion of Block 9, Vermilion Area, Revised, Vermilion Parish, Louisiana

The beds and bottoms of all water bodies belonging to the State of Louisiana located in that portion of Block 9, Vermilion Area, Revised, together with any present lands formed by accretion to the shoreline, located in Vermilion Parish, Louisiana, and not presently under mineral lease on July 14, 2004, the geographical area of which is more fully described as follows: Beginning at a point within Block 9, Vermilion Area, Revised, having Coordinates of X = 1,713,035.00 and Y = 319,580.00; Thence North 2,222.40 feet to a point on the Coastline as defined by the report of the Special Master and set forth in the judgment decree in June of 1975 by the Supreme Court of the United States in the litigation styled United States v. State of Louisiana, et al No. 9 Original, having Coordinates of X = 1,713,035.00 and Y = 321,802.40; Thence along the said Coastline the following courses: Northeasterly along a straight line to a point having Coordinates of X = 1,717,114.00 and Y = 324,303.00, Northeasterly along a straight line to a point having Coordinates of X = 1,718,313.00 and Y = 325,134.69; Thence South 5,554.69 feet to a point having Coordinates of X = 1,718,313.00 and Y = 319,580.00; Thence West 5,278.00 feet to the point of beginning containing approximately **466.64 acres**, all as more particularly outlined on a plat on file in the Office of Mineral Resources, Department of Natural Resources. All bearings, distances and coordinates are based on Louisiana Coordinate System of 1927, (North or South Zone).

NOTE: The above description of the Tract nominated for lease has been provided and corrected, where required, exclusively by the nomination party. Any mineral lease selected from this Tract and awarded by the Louisiana State Mineral Board shall be without warranty of any kind, either express, implied, or statutory, including, but not limited to, the implied warranties of merchantability and fitness for a particular purpose. Should the mineral lease awarded by the Louisiana State Mineral Board be subsequently modified, cancelled or abrogated due to the existence of conflicting leases, operating agreements, private claims or other future obligations or conditions which may affect all or any portion of the leased Tract, it shall not relieve the Lessee of the obligation to pay any bonus due thereon to the Louisiana State Mineral Board, nor shall the Louisiana State Mineral Board be obligated to refund any consideration paid by the Lessor prior to such modification, cancellation, or abrogation, including, but not limited to, bonuses, rentals and royalties.

NOTE: The State of Louisiana does hereby reserve, and this lease shall be subject to, the imprescriptible right of surface use in the nature of a servitude in favor of the Department of Natural Resources, including its Offices and Commissions, for the sole purpose of implementing, constructing, servicing and maintaining approved coastal zone management and/or restoration projects. Utilization of any and all rights derived under this lease by the mineral lessee, its agents, successors or assigns, shall not interfere with nor hinder the reasonable surface use by the

Department of Natural Resources, its Offices or Commissions, as herein above reserved.

NOTE: The Department of Wildlife and Fisheries has designated certain areas in the coastal waters of the State of Louisiana as Oyster Seed Bed Areas. The exact location of those Seed Bed Areas must be obtained from the Department of Wildlife and Fisheries and any work done under a mineral lease from the State of Louisiana may necessarily be conducted in conformity with the rules and regulations promulgated by the said Department of Wildlife and Fisheries for Oyster Seed Bed Areas.

Applicant: Woodland Petroleum Corporation

Bidder	Cash Payment	Price/Acre	Rental	Oil	Gas	Other



VERMILION PARISH

P.O.B.
X=1,713,035.00
Y=319,580.00

BLOCK VR0009

VERMILION AREA, REVISED



TRACT 36424 - Portion of Blocks 10, and 9, Vermilion Area, Revised, Vermilion Parish, Louisiana

The beds and bottoms of all water bodies belonging to the State of Louisiana located in that portion of Blocks 10, and 9, Vermilion Area, Revised, together with any present lands formed by accretion to the shoreline, located in Vermilion Parish, Louisiana, and not presently under mineral lease on July 14, 2004, the geographical area of which is more fully described as follows: Beginning at a point on the South boundary of Block 10, Vermilion Area, Revised, having Coordinates of X = 1,726,215.00 and Y = 318,182.82; Thence West 5,042.59 feet along said South boundary of Block 10, to its Southwest corner, said corner also being a point on the East boundary of Block 9, having Coordinates of X = 1,721,172.41 and Y = 318,182.82; Thence South 600.00 feet along said East boundary of Block 9, to its Southeast corner having Coordinates of X = 1,721,172.41 and Y = 317,582.82; Thence West 8,137.41 feet along the South boundary of said Block 9, to a point having Coordinates of X = 1,713,035.00 and Y = 317,582.82; Thence North 1,997.18 feet to a point having Coordinates of X = 1,713,035.00 and Y = 319,580.00; Thence East 5,278.00 feet to a point having Coordinates of X = 1,718,313.00 and Y = 319,580.00; Thence North 2,685.00 feet to a point having Coordinates of X = 1,718,313.00 and Y = 322,265.00; Thence East 2,859.41 feet to a point on the said East boundary of Block 9, said point also being a point on the West boundary of Block 10, having Coordinates of X = 1,721,172.41 and Y = 322,265.00; Thence East 5,042.59 feet to a point having Coordinates of X = 1,726,215.00 and Y = 322,265.00; Thence South 4,082.18 feet to the point of beginning containing approximately **1,021.90 acres**, all as more particularly outlined on a plat on file in the Office of Mineral Resources, Department of Natural Resources. All bearings, distances and coordinates are based on Louisiana Coordinate System of 1927, (North or South Zone).

NOTE: The above description of the Tract nominated for lease has been provided and corrected, where required, exclusively by the nomination party. Any mineral lease selected from this Tract and awarded by the Louisiana State Mineral Board shall be without warranty of any kind, either express, implied, or statutory, including, but not limited to, the implied warranties of merchantability and fitness for a particular purpose. Should the mineral lease awarded by the Louisiana State Mineral Board be subsequently modified, cancelled or abrogated due to the existence of conflicting leases, operating agreements, private claims or other future obligations or conditions which may affect all or any portion of the leased Tract, it shall not relieve the Lessee of the obligation to pay any bonus due thereon to the Louisiana State Mineral Board, nor shall the Louisiana State Mineral Board be obligated to refund any consideration paid by the Lessor prior to such modification, cancellation, or abrogation, including, but not limited to, bonuses, rentals and royalties.

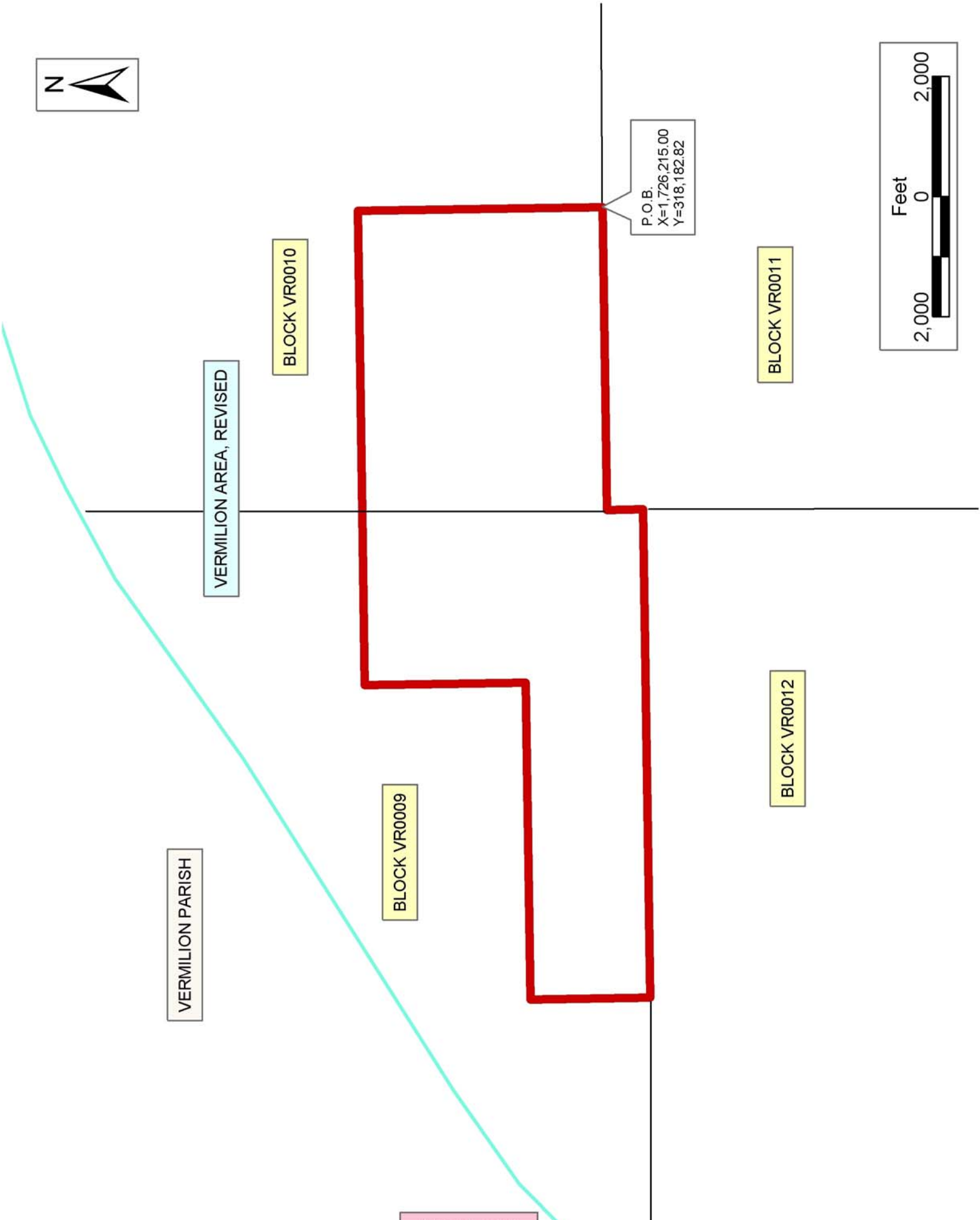
NOTE: The State of Louisiana does hereby reserve, and this lease shall be subject to, the imprescriptible right of surface use in the nature of a servitude in favor of the Department of Natural Resources, including its

Offices and Commissions, for the sole purpose of implementing, constructing, servicing and maintaining approved coastal zone management and/or restoration projects. Utilization of any and all rights derived under this lease by the mineral lessee, its agents, successors or assigns, shall not interfere with nor hinder the reasonable surface use by the Department of Natural Resources, its Offices or Commissions, as herein above reserved.

NOTE: The Department of Wildlife and Fisheries has designated certain areas in the coastal waters of the State of Louisiana as Oyster Seed Bed Areas. The exact location of those Seed Bed Areas must be obtained from the Department of Wildlife and Fisheries and any work done under a mineral lease from the State of Louisiana may necessarily be conducted in conformity with the rules and regulations promulgated by the said Department of Wildlife and Fisheries for Oyster Seed Bed Areas.

Applicant: Woodland Petroleum Corporation

Bidder	Cash Payment	Price/Acre	Rental	Oil	Gas	Other



TRACT 36425 - Portion of Blocks 8, and 9, Vermilion Area, Revised, Vermilion Parish, Louisiana

The beds and bottoms of all water bodies belonging to the State of Louisiana located in that portion of Blocks 8, and 9, Vermilion Area, Revised, together with any present lands formed by accretion to the shoreline, located in Vermilion Parish, Louisiana, and not presently under mineral lease on July 14, 2004, the geographical area of which is more fully described as follows: Beginning at a point on the South boundary of Block 9, Vermilion Area, Revised, having Coordinates of X = 1,713,035.00 and Y = 317,582.82; Thence West 6,620.64 feet along said South boundary of Block 9, to its Southwest corner, said corner also being a point on the East boundary of Block 8, having Coordinates of X = 1,706,414.36 and Y = 317,582.82; Thence West 706.03 feet to a point on the Coastline as defined by the report of the Special Master and set forth in the Judgment Decree in June of 1975 by the Supreme Court of the United States in the litigation styled United States v. State of Louisiana, et al No. 9 Original, having Coordinates of X = 1,705,708.33 and Y = 317,582.82; Thence along the said Coastline the following courses: Northeasterly to the Northeast corner of said Block 8, said corner also being the Northwest corner of said Block 9, having Coordinates of X = 1,706,414.36 and Y = 317,770.27; Northeasterly along a straight line to a point having Coordinates of X = 1,706,790 and Y = 317,870; Northeasterly along a straight line to a point having Coordinates of X = 1,708,756 and Y = 318,661; Northeasterly along a straight line to a point having Coordinates of X = 1,709,968 and Y = 319,818; Northeasterly along a straight line to a point having Coordinates of X = 1,711,532 and Y = 320,881; Northeasterly along a straight line to a point having Coordinates of X = 1,713,035.00 and Y = 321,802.40; Thence South 4,219.58 feet to the point of beginning, containing approximately **309.51 acres**, all as more particularly outlined on a plat on file in the Office of Mineral Resources, Department of Natural Resources. All bearings, distances and coordinates are based on Louisiana Coordinate System of 1927, (North or South Zone).

NOTE: The above description of the Tract nominated for lease has been provided and corrected, where required, exclusively by the nomination party. Any mineral lease selected from this Tract and awarded by the Louisiana State Mineral Board shall be without warranty of any kind, either express, implied, or statutory, including, but not limited to, the implied warranties of merchantability and fitness for a particular purpose. Should the mineral lease awarded by the Louisiana State Mineral Board be subsequently modified, cancelled or abrogated due to the existence of conflicting leases, operating agreements, private claims or other future obligations or conditions which may affect all or any portion of the leased Tract, it shall not relieve the Lessee of the obligation to pay any bonus due thereon to the Louisiana State Mineral Board, nor shall the Louisiana State Mineral Board be obligated to refund any consideration paid by the Lessor prior to such modification, cancellation, or abrogation, including, but not limited to, bonuses, rentals and royalties.

NOTE: The State of Louisiana does hereby reserve, and this lease shall be subject to, the imprescriptible right of surface use in the nature of a servitude in favor of the Department of Natural Resources, including its Offices and Commissions, for the sole purpose of implementing, constructing, servicing and maintaining approved coastal zone management and/or restoration projects. Utilization of any and all rights derived under this lease by the mineral lessee, its agents, successors or assigns, shall not interfere with nor hinder the reasonable surface use by the Department of Natural Resources, its Offices or Commissions, as herein above reserved.

NOTE: The Department of Wildlife and Fisheries has designated certain areas in the coastal waters of the State of Louisiana as Oyster Seed Bed Areas. The exact location of those Seed Bed Areas must be obtained from the Department of Wildlife and Fisheries and any work done under a mineral lease from the State of Louisiana may necessarily be conducted in conformity with the rules and regulations promulgated by the said Department of Wildlife and Fisheries for Oyster Seed Bed Areas.

Applicant: Woodland Petroleum Corporation

Bidder	Cash Payment	Price/Acre	Rental	Oil	Gas	Other

TRACT 36426 - Portion of Blocks 51, and 52, Breton Sound Area, Plaquemines Parish, Louisiana

The beds and bottoms of all water bodies belonging to the State of Louisiana located in that portion of Blocks 51, and 52, Breton Sound Area, together with any present lands formed by accretion to the shoreline, located in Plaquemines Parish, Louisiana, and not presently under mineral lease on July 14, 2004, the geographical area of which is more fully described as follows: Beginning at a point having Coordinates of X = 2,679,600.00 and Y = 292,830.00, said point being the Northeast corner of Block 51, Breton Sound Area, said point also being the Northwest corner of Block 52; thence East 2,400.00 feet on and along the North line of said Block 52, to a point having Coordinates of X = 2,682,000.00 and Y = 292,830.00, said point being the Northwest corner of State Lease No. 17675; thence South 20 degrees 19 minutes 23 seconds East 3,599.05 feet on and along the Western boundary of said State Lease No. 17675 to a point having Coordinates of X = 2,683,250.00 and Y = 289,455.00, said point being the Westerly Northwest corner of State Lease No. 12806, as amended; thence on and along the Western and Southern boundaries of said State Lease No. 12806, the following courses and distances, to wit: South 1,200.00 feet to a point having Coordinates of X = 2,683,250.00 and Y = 288,255.00; South 79 degrees 02 minutes 24 seconds East 2,050.87 feet to a point having Coordinates of X = 2,685,263.46 and Y = 287,865.08; and Northeasterly 1,191.37 feet along a curve to the left, having a radius of 6,073.33 and a chord bearing and distance of South 85 degrees 50 minutes 18 seconds East 1,189.46 feet, to a point having Coordinates of X = 2,686,449.78 and Y = 287,778.76, said point being the Northerly Northwest corner of State Lease No. 17861; thence on and along the Western and Southern boundaries of said State Lease No. 17861 the following courses and distances, to wit: South 10 degrees 07 minutes 29 seconds West 4,265.18 feet to a point having Coordinates of X = 2,685,700.00 and Y = 283,580.00; South 81 degrees 24 minutes 59 seconds East 2,680.02 feet to a point having Coordinates of X = 2,688,350.00 and Y = 283,180.00; and South 08 degrees 21 minutes 57 seconds West 5,154.85 feet to a point having Coordinates of X = 2,687,600.00 and Y = 278,080.00, said point being on the South line of said Block 52; thence West 7,857.20 feet on and along said South line of said Block 52, to a point having Coordinates of X = 2,679,742.80 and Y = 278,080.00; thence North 06 degrees 06 minutes 01 seconds West 14,834.00 feet to a point having Coordinates of X = 2,678,166.42 and Y = 292,830.00, said point being on the North line of said Block 51; thence East 1,433.58 feet on and along said North line of said Block 51, to the point of beginning, containing approximately **2,279.86 acres**, all as more particularly outlined on a plat on file in the Office of Mineral Resources, Department of Natural Resources. All bearings, distances and coordinates are based on Louisiana Coordinate System of 1927, (North or South Zone).

NOTE: The above description of the Tract nominated for lease has been provided and corrected, where required, exclusively by the nomination party. Any mineral lease selected from this Tract and awarded by the

Louisiana State Mineral Board shall be without warranty of any kind, either express, implied, or statutory, including, but not limited to, the implied warranties of merchantability and fitness for a particular purpose. Should the mineral lease awarded by the Louisiana State Mineral Board be subsequently modified, cancelled or abrogated due to the existence of conflicting leases, operating agreements, private claims or other future obligations or conditions which may affect all or any portion of the leased Tract, it shall not relieve the Lessee of the obligation to pay any bonus due thereon to the Louisiana State Mineral Board, nor shall the Louisiana State Mineral Board be obligated to refund any consideration paid by the Lessor prior to such modification, cancellation, or abrogation, including, but not limited to, bonuses, rentals and royalties.

NOTE: The State of Louisiana does hereby reserve, and this lease shall be subject to, the imprescriptible right of surface use in the nature of a servitude in favor of the Department of Natural Resources, including its Offices and Commissions, for the sole purpose of implementing, constructing, servicing and maintaining approved coastal zone management and/or restoration projects. Utilization of any and all rights derived under this lease by the mineral lessee, its agents, successors or assigns, shall not interfere with nor hinder the reasonable surface use by the Department of Natural Resources, its Offices or Commissions, as herein above reserved.

Applicant: Robert A. Schroeder, Inc.

Bidder	Cash Payment	Price/Acre	Rental	Oil	Gas	Other



PLAQUEMINES PARISH

P.O.B.
X=2,679,600.00
Y=292,830.00

SL 17674

SL 12806

BLOCK BS0052

SL 17675

SL 16737

SL 17860

SL 17861

BRETON SOUND AREA

SL 17863

MAIN PASS AREA, REVISED

BLOCK MP0045

Feet

0

3,000

3,000

BLOCK BS0051

SL 16890

SL 17243

SL 17245

SL 17244

SL 17053

SL 17052

TRACT 36427 - Portion of Block 16, South Pass Area, Plaquemines Parish, Louisiana

The beds and bottoms of all water bodies belonging to the State of Louisiana located in that portion of Block 16, South Pass Area, together with any present lands formed by accretion to the shoreline, located in Plaquemines Parish, Louisiana, and not presently under mineral lease on July 14, 2004, the geographical area of which is more fully described as follows: Beginning at a point on the East line of Block 16, South Pass Area, having Coordinates of X = 2,733,992.00 and Y = 155,932.00; thence South 14,750.00 feet along said East line to the Southeast corner of said Block 16, having Coordinates of X = 2,733,992.00 and Y = 141,182.00, and being the Southeast Corner of said Block 16, thence West 10,605.27 feet along the South line of said Block 16, to a point on the boundary line of the Pass A Loutre Wildlife Management Area having Coordinates of X = 2,723,386.73 and Y = 141,182.00; thence Northeasterly 16,593.57 feet along said boundary of the Pass A Loutre Wildlife Management Area to a point having Coordinates of X = 2,730,988.32 and Y = 155,932.00; thence East 3,003.68 feet to the point of beginning, containing approximately **2,304.09 acres**, all as more particularly outlined on a plat on file in the Office of Mineral Resources, Department of Natural Resources. All bearings, distances and coordinates are based on Louisiana Coordinate System of 1927, (North or South Zone).

NOTE: The above description of the Tract nominated for lease has been provided and corrected, where required, exclusively by the nomination party. Any mineral lease selected from this Tract and awarded by the Louisiana State Mineral Board shall be without warranty of any kind, either express, implied, or statutory, including, but not limited to, the implied warranties of merchantability and fitness for a particular purpose. Should the mineral lease awarded by the Louisiana State Mineral Board be subsequently modified, cancelled or abrogated due to the existence of conflicting leases, operating agreements, private claims or other future obligations or conditions which may affect all or any portion of the leased Tract, it shall not relieve the Lessee of the obligation to pay any bonus due thereon to the Louisiana State Mineral Board, nor shall the Louisiana State Mineral Board be obligated to refund any consideration paid by the Lessor prior to such modification, cancellation, or abrogation, including, but not limited to, bonuses, rentals and royalties.

NOTE: The State of Louisiana does hereby reserve, and this lease shall be subject to, the imprescriptible right of surface use in the nature of a servitude in favor of the Department of Natural Resources, including its Offices and Commissions, for the sole purpose of implementing, constructing, servicing and maintaining approved coastal zone management and/or restoration projects. Utilization of any and all rights derived under this lease by the mineral lessee, its agents, successors or assigns, shall not interfere with nor hinder the reasonable surface use by the Department of Natural Resources, its Offices or Commissions, as herein above reserved.

NOTE: It appears, according to our records, that a portion of this Tract is located within the restrictive safety fairway area as set out by the Corps of Engineers, U.S. Army and/or the restrictive anchorage area as set out by the U.S. Coast Guard.

NOTE: The Department of Wildlife and Fisheries has designated certain areas in the coastal waters of the State of Louisiana as Oyster Seed Bed Areas. The exact location of those Seed Bed Areas must be obtained from the Department of Wildlife and Fisheries and any work done under a mineral lease from the State of Louisiana may necessarily be conducted in conformity with the rules and regulations promulgated by the said Department of Wildlife and Fisheries for Oyster Seed Bed Areas.

Applicant: Lee Sonnier, Iii

Bidder	Cash Payment	Price/Acre	Rental	Oil	Gas	Other



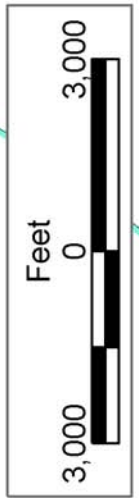
P.O.B.
X=2,733,992.00
Y=155,932.00

SOUTH PASS AREA

PLAQUEMINES PARISH

BLOCK SP0017

SL 17062



SL 16867

BLOCK SP0016

SL 17060