

TRACT 36408 - Portion of Block 5, Main Pass Area, Revised, St. Bernard Parish, Louisiana

The beds and bottoms of all water bodies belonging to the State of Louisiana located in that portion of Block 5, Main Pass Area, Revised, together with any present lands formed by accretion to the shoreline, located in St. Bernard Parish, Louisiana, and not presently under mineral lease on July 14, 2004, the geographical area of which is more fully described as follows: Beginning at a point on the East boundary of Block 5, Main Pass Area, Revised, also being the Northeast corner of State Lease No. 18003 having Coordinates of X = 2,768,100.00 and Y = 372,880.00; Thence West 5,400.00 feet along the North boundary of said State Lease No. 18003 to its Northwest corner having Coordinates of X = 2,762,700.00 and Y = 372,880.00; Thence South 6,300.00 along the West boundary of said State Lease No. 18003 to its Southwest corner on the South boundary of said Block 5 having Coordinates of X = 2,762,700.00 and Y = 366,580.00; Thence West 5,407.41 feet along the said South boundary of Block 5 to a point on the Coastline as defined by the report of the Special Master and set forth in the judgment decree in June of 1975 by the Supreme Court of the United States in the litigation styled United States v. State of Louisiana, et al No. 9 Original, having Coordinates of X = 2,757,292.59 and Y = 366,580.00; Thence along the said Coastline the following courses: Northeasterly to a point having Coordinates of X = 2,757,465.00 and Y = 366,796.00; Northeasterly to a point having Coordinates of X = 2,758,093.00 and Y = 367,862.00; Northeasterly to a point having Coordinates of X = 2,761,138.00 and Y = 371,491.00; Northeasterly to a point having Coordinates of X = 2,766,408.00 and Y = 378,524.00; Northeasterly to a point having Coordinates of X = 2,767,052.00 and Y = 379,676.00; Northeasterly to a point having Coordinates of X = 2,768,031.00 and Y = 380,244.00; Northeasterly to a point on the East boundary of said Block 5 having Coordinates of X = 2,768,100.00 and Y = 380,362.43; Thence South 7,482.43 feet along the said East boundary of Block 5 to the point of beginning, containing approximately **973.82 acres**, all as more particularly outlined on a plat on file in the Office of Mineral Resources, Department of Natural Resources. All bearings, distances and coordinates are based on Louisiana Coordinate System of 1927, (North or South Zone).

NOTE: The above description of the Tract nominated for lease has been provided and corrected, where required, exclusively by the nomination party. Any mineral lease selected from this Tract and awarded by the Louisiana State Mineral Board shall be without warranty of any kind, either express, implied, or statutory, including, but not limited to, the implied warranties of merchantability and fitness for a particular purpose. Should the mineral lease awarded by the Louisiana State Mineral Board be subsequently modified, cancelled or abrogated due to the existence of conflicting leases, operating agreements, private claims or other future obligations or conditions which may affect all or any portion of the leased Tract, it shall not relieve the Lessee of the obligation to pay any bonus due thereon to the Louisiana State Mineral Board, nor shall the Louisiana State Mineral Board be obligated to refund any consideration

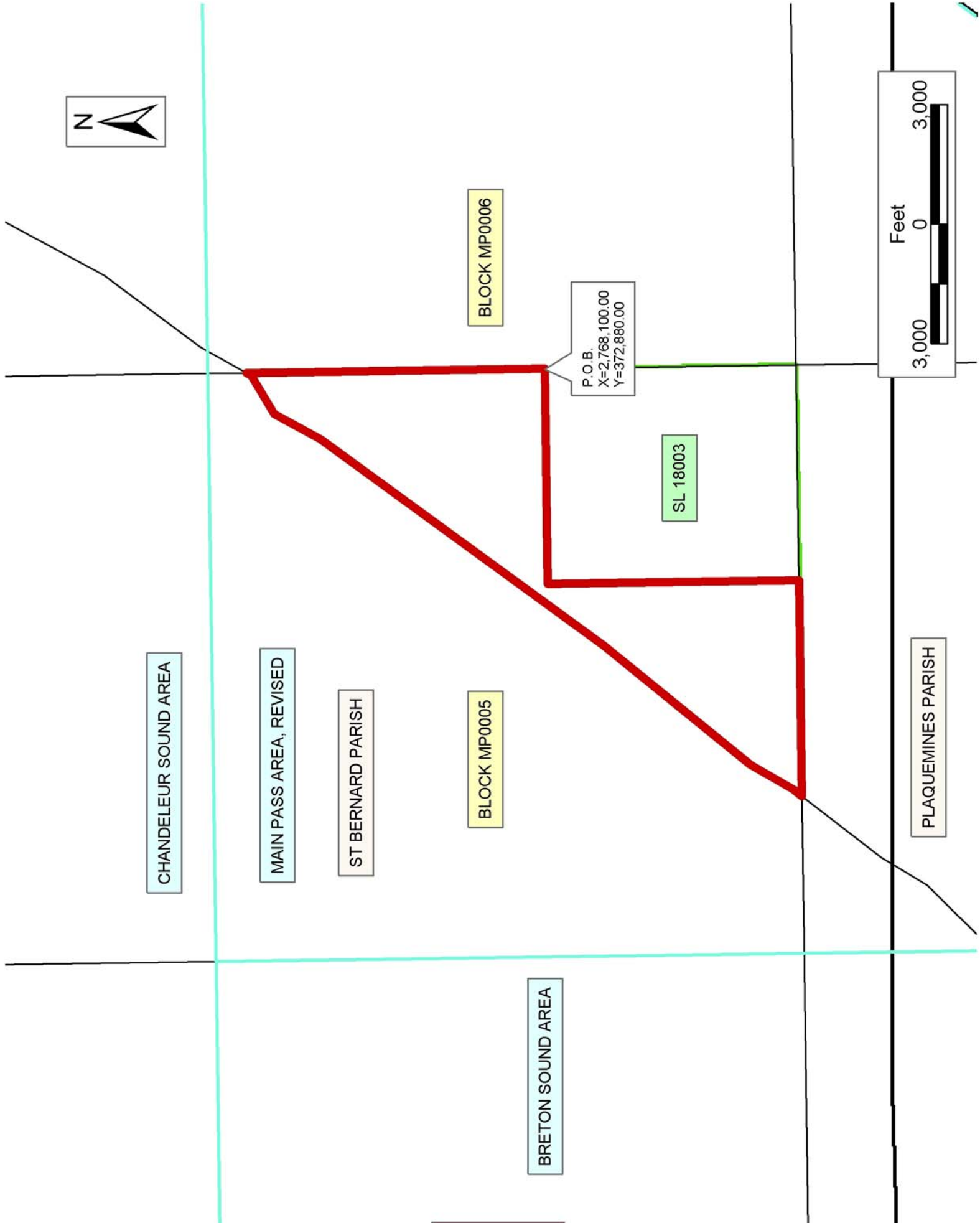
paid by the Lessor prior to such modification, cancellation, or abrogation, including, but not limited to, bonuses, rentals and royalties.

NOTE: The Office of Mineral Resources will require a minimum bonus of \$190 per acre and a minimum royalty of 22%.

NOTE: The State of Louisiana does hereby reserve, and this lease shall be subject to, the imprescriptible right of surface use in the nature of a servitude in favor of the Department of Natural Resources, including its Offices and Commissions, for the sole purpose of implementing, constructing, servicing and maintaining approved coastal zone management and/or restoration projects. Utilization of any and all rights derived under this lease by the mineral lessee, its agents, successors or assigns, shall not interfere with nor hinder the reasonable surface use by the Department of Natural Resources, its Offices or Commissions, as herein above reserved.

Applicant: Oil And Gas Resources, Inc.

Bidder	Cash Payment	Price/Acre	Rental	Oil	Gas	Other



TRACT 36409 - Portion of Block 8, Main Pass Area, Revised, Plaquemines and St. Bernard Parishes, Louisiana

The beds and bottoms of all water bodies belonging to the State of Louisiana located in that portion of Block 8, Main Pass Area, Revised, together with any present lands formed by accretion to the shoreline, located in Plaquemines and St. Bernard Parishes, Louisiana, and not presently under mineral lease on July 14, 2004, the geographical area of which is more fully described as follows: Beginning at the Northeast corner of Block 8, Main Pass Area, Revised, having Coordinates of X = 2,768,100.00 and Y = 366,580.00; Thence South 3,368.17 feet along the East boundary of said Block 8 to the Northeast corner of State Lease No. 17418 having Coordinates of X = 2,768,100.00 and Y = 363,211.83; Thence South 75 degrees 47 minutes 36 seconds West 3,206.05 feet along the North boundary of said State Lease No. 17418 to its Northwest corner having Coordinates of X = 2,764,992.00 and Y = 362,425.00; Thence South 3,220.00 feet along the West boundary of said State Lease No. 17418 to a point having Coordinates of X = 2,764,992.00 and Y = 359,205.00; Thence West 11,642.00 feet to a point on the West boundary of said Block 8 having Coordinates of X = 2,753,350.00 and Y = 359,205.00; Thence North 2,641.90 feet along the said West boundary of Block 8 to a point on the Coastline as defined by the report of the Special Master and set forth in the judgment decree in June of 1975 by the Supreme Court of the United States in the litigation styled United States v. State of Louisiana, et al No. 9 Original, having Coordinates of X = 2,753,350.00 and Y = 361,846.90; Thence along the said Coastline the following courses: Northeasterly to a point having Coordinates of X = 2,755,015.00 and Y = 363,480.00; Northeasterly to a point having Coordinates of X = 2,755,709.00 and Y = 364,596.00; Northeasterly to a point on the North boundary of said Block 8 having Coordinates of X = 2,757,292.59 and Y = 366,580.00; Thence East 10,807.41 feet along the North boundary of said Block 8 to the point of beginning, containing approximately **2,013.19 acres**, all as more particularly outlined on a plat on file in the Office of Mineral Resources, Department of Natural Resources. All bearings, distances and coordinates are based on Louisiana Coordinate System of 1927, (North or South Zone).

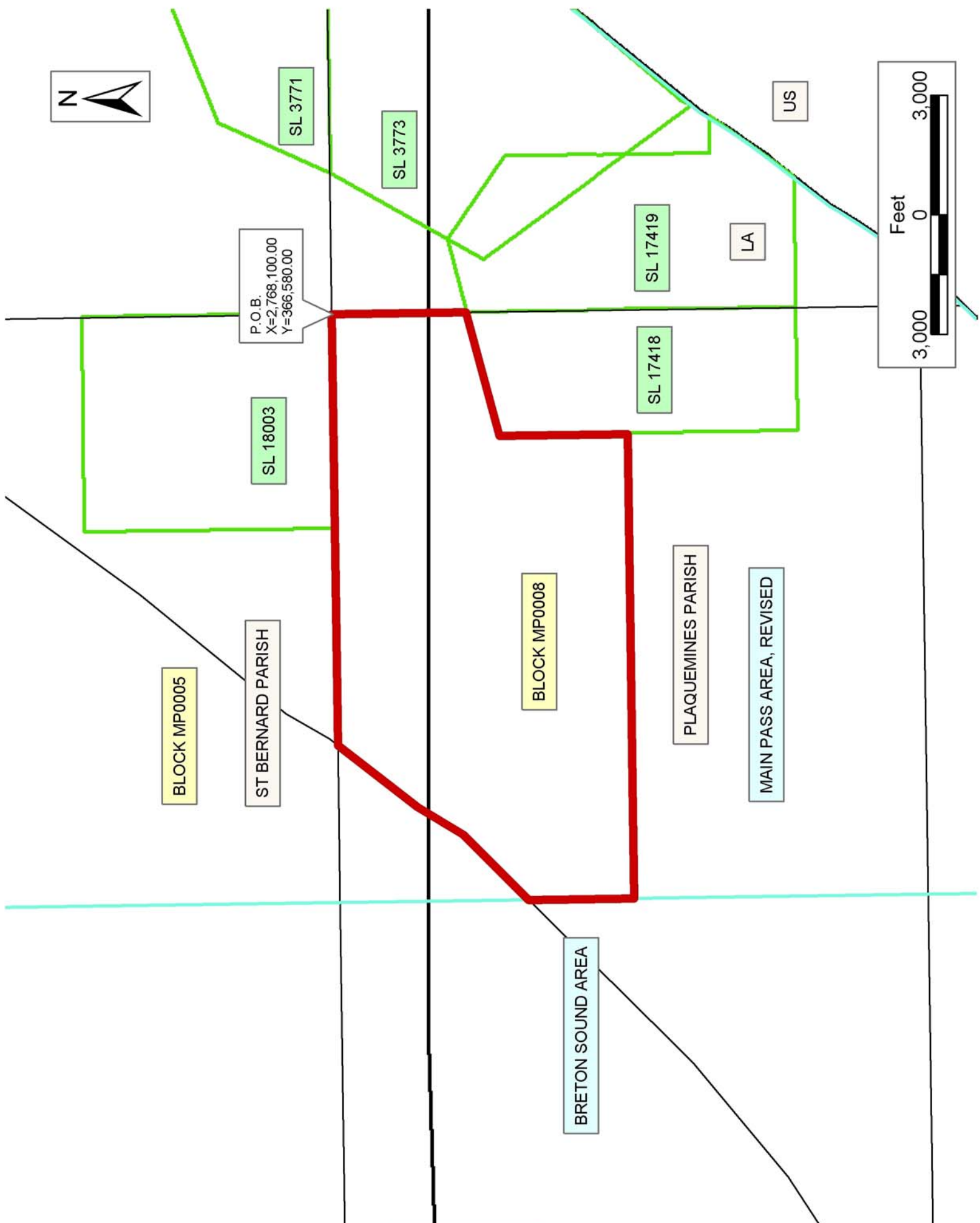
NOTE: The above description of the Tract nominated for lease has been provided and corrected, where required, exclusively by the nomination party. Any mineral lease selected from this Tract and awarded by the Louisiana State Mineral Board shall be without warranty of any kind, either express, implied, or statutory, including, but not limited to, the implied warranties of merchantability and fitness for a particular purpose. Should the mineral lease awarded by the Louisiana State Mineral Board be subsequently modified, cancelled or abrogated due to the existence of conflicting leases, operating agreements, private claims or other future obligations or conditions which may affect all or any portion of the leased Tract, it shall not relieve the Lessee of the obligation to pay any bonus due thereon to the Louisiana State Mineral Board, nor shall the Louisiana State Mineral Board be obligated to refund any consideration

paid by the Lessor prior to such modification, cancellation, or abrogation, including, but not limited to, bonuses, rentals and royalties.

NOTE: The State of Louisiana does hereby reserve, and this lease shall be subject to, the imprescriptible right of surface use in the nature of a servitude in favor of the Department of Natural Resources, including its Offices and Commissions, for the sole purpose of implementing, constructing, servicing and maintaining approved coastal zone management and/or restoration projects. Utilization of any and all rights derived under this lease by the mineral lessee, its agents, successors or assigns, shall not interfere with nor hinder the reasonable surface use by the Department of Natural Resources, its Offices or Commissions, as herein above reserved.

Applicant: Oil And Gas Resources, Inc.

Bidder	Cash Payment	Price/Acre	Rental	Oil	Gas	Other



TRACT 36410 - Portion of Block 9, Breton Sound Area, Plaquemines Parish, Louisiana

The beds and bottoms of all water bodies belonging to the State of Louisiana located in that portion of Block 9, Breton Sound Area, together with any present lands formed by accretion to the shoreline, located in Plaquemines Parish, Louisiana, and not presently under mineral lease on July 14, 2004, the geographical area of which is more fully described as follows: Beginning at the Southeast corner of Block 9, Breton Sound Area, having Coordinates of X = 2,753,350.00 and Y = 351,830.00; Thence West 12,230.04 feet along the South boundary of said Block 9 to a point on the Coastline as defined by the report of the Special Master and set forth in the judgment decree in June of 1975 by the Supreme Court of the United States in the litigation styled United States v. State of Louisiana, et al No. 9 Original, having Coordinates of X = 2,741,119.96 and Y = 351,830.00; Thence along the said Coastline the following courses: Northeasterly to a point having Coordinates of X = 2,742,583 and Y = 353,754; Northeasterly to a point having Coordinates of X = 2,743,352 and Y = 353,794; Northeasterly to a point having Coordinates of X = 2,744,222 and Y = 354,125; Northeasterly to a point having Coordinates of X = 2,746,309 and Y = 355,438; Northeasterly to a point having Coordinates of X = 2,749,221 and Y = 357,797; Northeasterly to a point on the East boundary of said Block 9 having Coordinates of X = 2,753,350.00 and Y = 361,846.90; Thence South 10,016.90 feet along the said East boundary of said Block 9 to the point of beginning, containing approximately **1,328.16 acres**, all as more particularly outlined on a plat on file in the Office of Mineral Resources, Department of Natural Resources. All bearings, distances and coordinates are based on Louisiana Coordinate System of 1927, (North or South Zone).

NOTE: The above description of the Tract nominated for lease has been provided and corrected, where required, exclusively by the nomination party. Any mineral lease selected from this Tract and awarded by the Louisiana State Mineral Board shall be without warranty of any kind, either express, implied, or statutory, including, but not limited to, the implied warranties of merchantability and fitness for a particular purpose. Should the mineral lease awarded by the Louisiana State Mineral Board be subsequently modified, cancelled or abrogated due to the existence of conflicting leases, operating agreements, private claims or other future obligations or conditions which may affect all or any portion of the leased Tract, it shall not relieve the Lessee of the obligation to pay any bonus due thereon to the Louisiana State Mineral Board, nor shall the Louisiana State Mineral Board be obligated to refund any consideration paid by the Lessor prior to such modification, cancellation, or abrogation, including, but not limited to, bonuses, rentals and royalties.

NOTE: The State of Louisiana does hereby reserve, and this lease shall be subject to, the imprescriptible right of surface use in the nature of a servitude in favor of the Department of Natural Resources, including its Offices and Commissions, for the sole purpose of implementing,

constructing, servicing and maintaining approved coastal zone management and/or restoration projects. Utilization of any and all rights derived under this lease by the mineral lessee, its agents, successors or assigns, shall not interfere with nor hinder the reasonable surface use by the Department of Natural Resources, its Offices or Commissions, as herein above reserved.

Applicant: Oil And Gas Resources, Inc.

Bidder	Cash Payment	Price/Acre	Rental	Oil	Gas	Other



ST BERNARD PARISH

BRETON SOUND AREA

PLAQUEMINES PARISH

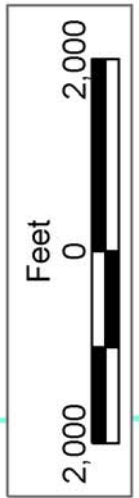
BLOCK BS0009

BLOCK BS0024

MAIN PASS AREA, REVISED

BLOCK MP0008

P.O.B.
X=2,753,350.00
Y=351,830.00



TRACT 36411 - Portion of Blocks 7, and 8, Main Pass Area, Revised, Plaquemines Parish, Louisiana

The beds and bottoms of all water bodies belonging to the State of Louisiana located in that portion of Blocks 7, and 8, Main Pass Area, Revised, together with any present lands formed by accretion to the shoreline, located in Plaquemines Parish, Louisiana, and not presently under mineral lease on July 14, 2004, the geographical area of which is more fully described as follows: Beginning at the Southwest corner of Block 8, Main Pass Area, Revised, having Coordinates of X = 2,753,350.00 and Y = 351,830.00; Thence North 7,375.00 feet along the West boundary of said Block 8 to a point having Coordinates of X = 2,753,350.00 and Y = 359,205.00; Thence East 11,642.00 feet to a point on the West boundary of State Lease No. 17418 having Coordinates of X = 2,764,992.00 and Y = 359,205.00; Thence South 4,246.00 feet along the said West boundary of State Lease No. 17418 to its Southwest corner having Coordinates of X = 2,764,992.00 and Y = 354,959.00; Thence East 3,108.00 feet along the South boundary of said State Lease No. 17418 to its Southeast corner on the East boundary of said Block 8, also being the Southwest corner of State Lease No. 17419 on the West boundary of Block 7, having Coordinates of X = 2,768,100.00 and Y = 354,959.00; Thence East 3,255.41 feet along the South boundary of said State Lease No. 17419 to a point on the three mile line having Coordinates of X = 2,771,355.41 and Y = 354,959.00; Thence along the said three mile line the following courses: Southwesterly to a point having Coordinates of X = 2,770,633.00 and Y = 354,054.00; Southwesterly to a point having Coordinates of X = 2,770,505.00 and Y = 353,847.00; Southwesterly on an arc having a radius of 18,240.60 feet and a center at X = 2,755,015.00 and Y = 363,480.00 to a point on the South boundary of said Block 7 having Coordinates X = 2,769,050.85 and Y = 351,830.00; Thence West 950.85 feet along the said South boundary of Block 7 to its Southwest corner, also being the Southeast corner of said Block 8, having Coordinates of X = 2,768,100.00 and Y = 351,830.00; Thence West 14,750.00 feet along the South boundary of said Block 8 to the point of beginning, containing approximately **2,345.49 acres, LESS AND EXCEPT** that portion thereof, if any, lying seaward of the line three nautical miles from the coast line of Louisiana, as said three mile line has been decreed by the Supreme Court of the United States, as determined by a Special Master appointed therein, in litigation styled **United States v. State of Louisiana et al No. 9 Original**, in 1975, all as more particularly outlined on a plat in the Office of Mineral Resources, Department of Natural Resources. All bearings, distances and coordinates are based on the Louisiana Coordinate System of 1927, (South Zone).

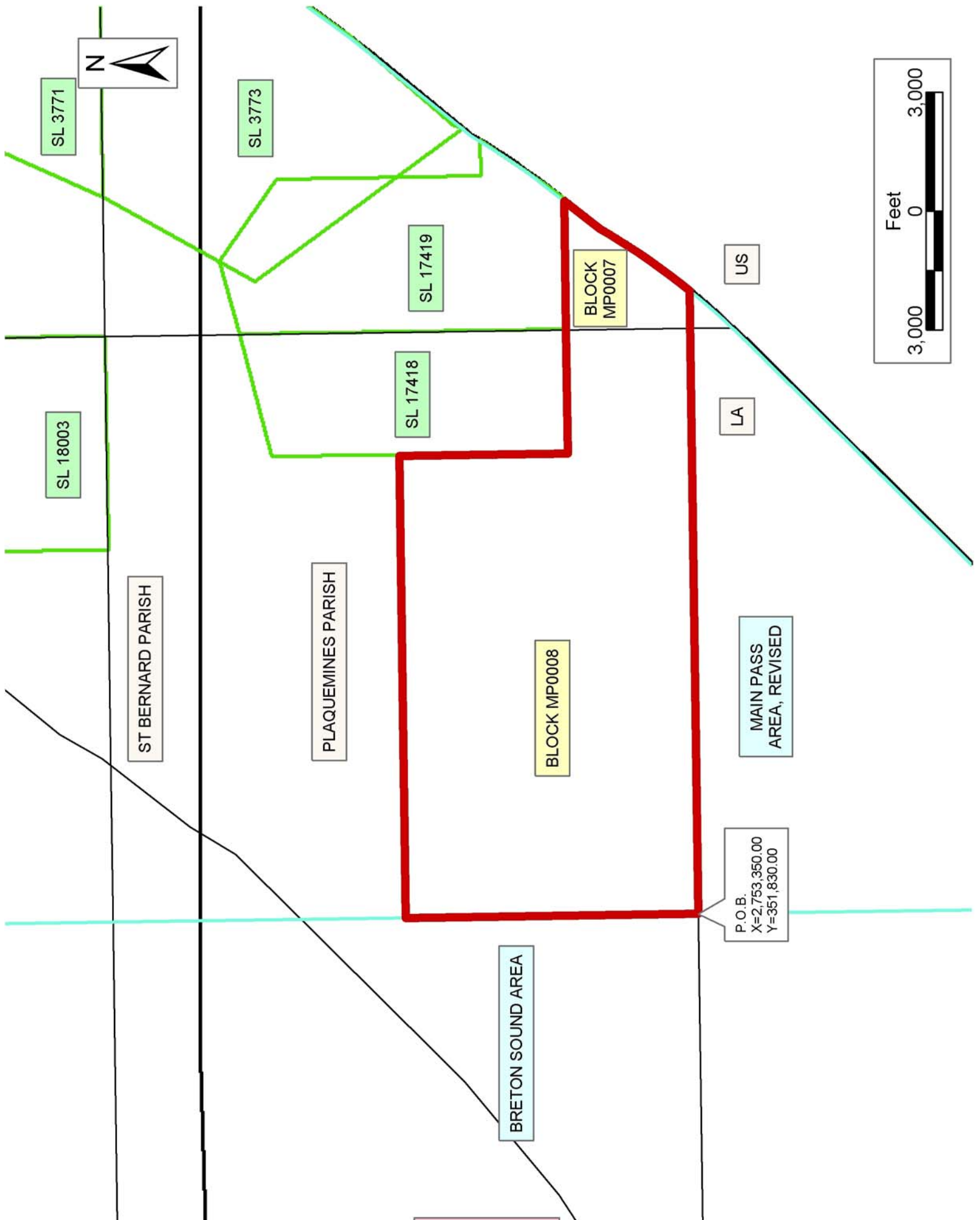
NOTE: The above description of the Tract nominated for lease has been provided and corrected, where required, exclusively by the nomination party. Any mineral lease selected from this Tract and awarded by the Louisiana State Mineral Board shall be without warranty of any kind, either express, implied, or statutory, including, but not limited to, the implied warranties of merchantability and fitness for a particular purpose. Should the mineral lease awarded by the Louisiana State Mineral

Board be subsequently modified, cancelled or abrogated due to the existence of conflicting leases, operating agreements, private claims or other future obligations or conditions which may affect all or any portion of the leased Tract, it shall not relieve the Lessee of the obligation to pay any bonus due thereon to the Louisiana State Mineral Board, nor shall the Louisiana State Mineral Board be obligated to refund any consideration paid by the Lessor prior to such modification, cancellation, or abrogation, including, but not limited to, bonuses, rentals and royalties.

NOTE: The State of Louisiana does hereby reserve, and this lease shall be subject to, the imprescriptible right of surface use in the nature of a servitude in favor of the Department of Natural Resources, including its Offices and Commissions, for the sole purpose of implementing, constructing, servicing and maintaining approved coastal zone management and/or restoration projects. Utilization of any and all rights derived under this lease by the mineral lessee, its agents, successors or assigns, shall not interfere with nor hinder the reasonable surface use by the Department of Natural Resources, its Offices or Commissions, as herein above reserved.

Applicant: Oil And Gas Resources, Inc.

Bidder	Cash Payment	Price/Acre	Rental	Oil	Gas	Other



TRACT 36412 - Portion of Blocks 17, and 18, Main Pass Area, Revised, Plaquemines Parish, Louisiana

The beds and bottoms of all water bodies belonging to the State of Louisiana located in that portion of Blocks 17, and 18, Main Pass Area, Revised, together with any present lands formed by accretion to the shoreline, located in Plaquemines Parish, Louisiana, and not presently under mineral lease on July 14, 2004, the geographical area of which is more fully described as follows: Beginning at a point on the North boundary of Block 17, Main Pass Area, Revised, having Coordinates of X = 2,760,703.00 and Y = 351,830.00; Thence East 7,397.00 feet along the said North boundary of Block 17 to its Northeast corner, also being the Northwest corner of Block 18, having Coordinates of X = 2,768,100.00 and Y = 351,830.00; Thence East 950.85 feet along the North boundary of said Block 18 to a point on the three mile line having Coordinates of X = 2,769,050.85 and Y = 351,830.00; Thence along the said three mile line the following courses: Southwesterly on an arc having a radius of 18,240.60 feet and a center at X = 2,755,015.00 and Y = 363,480.00 to a point on the West boundary of said Block 18 having Coordinates X = 2,768,100.00 and Y = 350,771.49; Southwesterly on an arc having a radius of 18,240.60 feet and a center at X = 2,755,015.00 and Y = 363,480.00 to a point having Coordinates X = 2,767,788.00 and Y = 350,458.00; Southwesterly to a point having Coordinates of X = 2,761,994.00 and Y = 344,775.00; Southwesterly on an arc having a radius of 18,240.60 feet and a center at X = 2,749,221.00 and Y = 357,797.00 to a point having Coordinates X = 2,760,703.00 and Y = 343,624.00; Thence North 8,206.00 feet to the point of beginning, containing approximately **807.70 acres, LESS AND EXCEPT** that portion thereof, if any, lying seaward of the line three nautical miles from the coast line of Louisiana, as said three mile line has been decreed by the Supreme Court of the United States, as determined by a Special Master appointed therein, in litigation styled **United States v. State of Louisiana et al No. 9 Original**, in 1975, all as more particularly outlined on a plat in the Office of Mineral Resources, Department of Natural Resources. All bearings, distances and coordinates are based on the Louisiana Coordinate System of 1927, (South Zone).

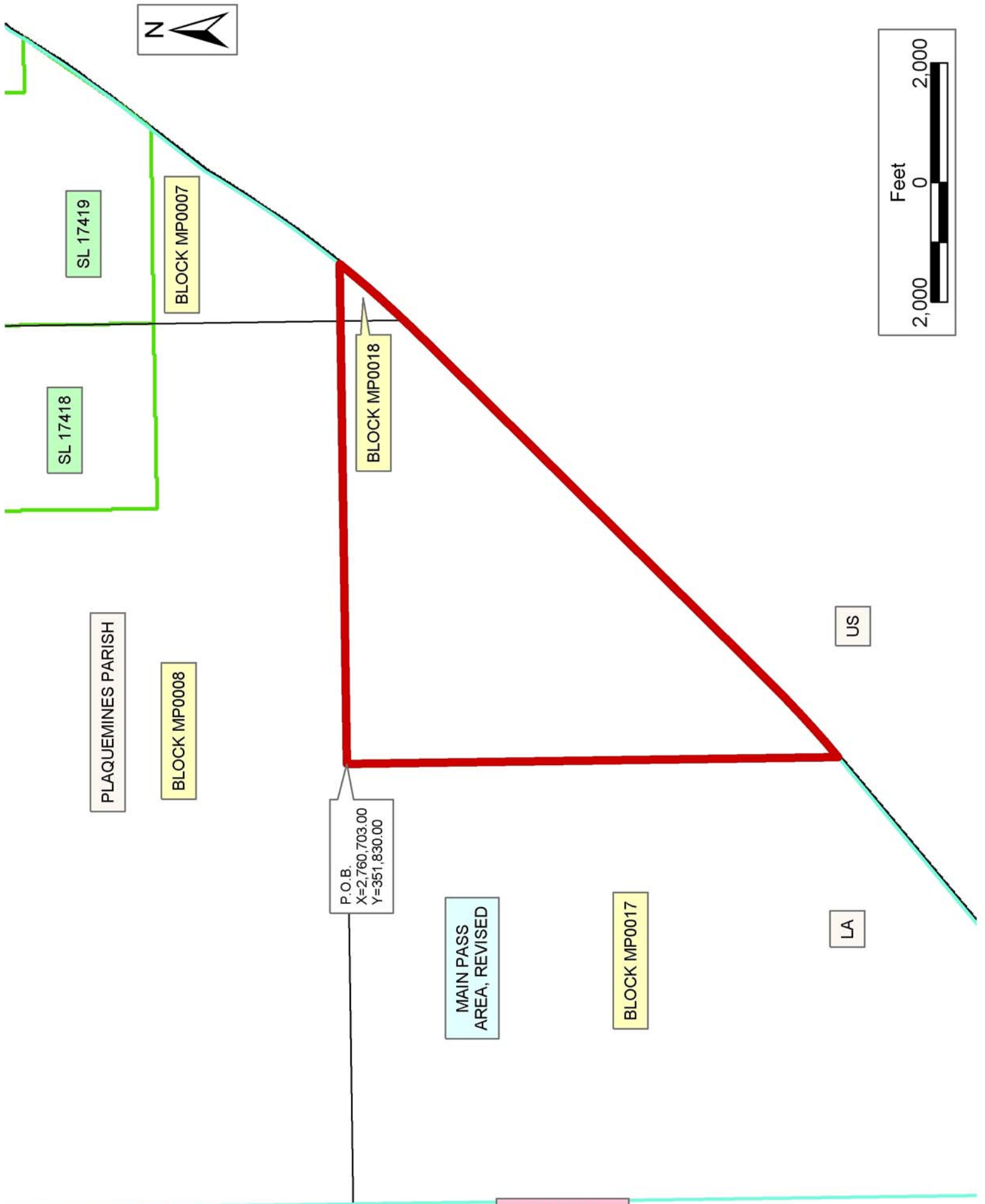
NOTE: The above description of the Tract nominated for lease has been provided and corrected, where required, exclusively by the nomination party. Any mineral lease selected from this Tract and awarded by the Louisiana State Mineral Board shall be without warranty of any kind, either express, implied, or statutory, including, but not limited to, the implied warranties of merchantability and fitness for a particular purpose. Should the mineral lease awarded by the Louisiana State Mineral Board be subsequently modified, cancelled or abrogated due to the existence of conflicting leases, operating agreements, private claims or other future obligations or conditions which may affect all or any portion of the leased Tract, it shall not relieve the Lessee of the obligation to pay any bonus due thereon to the Louisiana State Mineral Board, nor shall the Louisiana State Mineral Board be obligated to refund any consideration

paid by the Lessor prior to such modification, cancellation, or abrogation, including, but not limited to, bonuses, rentals and royalties.

NOTE: The State of Louisiana does hereby reserve, and this lease shall be subject to, the imprescriptible right of surface use in the nature of a servitude in favor of the Department of Natural Resources, including its Offices and Commissions, for the sole purpose of implementing, constructing, servicing and maintaining approved coastal zone management and/or restoration projects. Utilization of any and all rights derived under this lease by the mineral lessee, its agents, successors or assigns, shall not interfere with nor hinder the reasonable surface use by the Department of Natural Resources, its Offices or Commissions, as herein above reserved.

Applicant: Oil And Gas Resources, Inc.

Bidder	Cash Payment	Price/Acre	Rental	Oil	Gas	Other



P.O.B.
X=2,760,703.00
Y=351,830.00

SL 17419

SL 17418

BLOCK MP0007

BLOCK MP0018

PLAQUEMINES PARISH

BLOCK MP0008

MAIN PASS
AREA,
REVISED

BLOCK MP0017

US

LA



TRACT 36413 - Portion of Block 24, Breton Sound Area, Plaquemines Parish, Louisiana

The beds and bottoms of all water bodies belonging to the State of Louisiana located in that portion of Block 24, Breton Sound Area, together with any present lands formed by accretion to the shoreline, located in Plaquemines Parish, Louisiana, and not presently under mineral lease on July 14, 2004, the geographical area of which is more fully described as follows: Beginning at the Northeast corner of Block 24, Breton Sound Area, having Coordinates of X = 2,753,350.00 and Y = 351,830.00; Thence South 7,375.00 feet along the East boundary of said Block 24 to a point having Coordinates of X = 2,753,350.00 and Y = 344,455.00; Thence West 14,750.00 feet to a point on the West boundary of said Block 24 having Coordinates of X = 2,738,600.00 and Y = 344,455.00; Thence North 4,061.07 feet along the said West boundary of said Block 24 to a point on the Coastline as defined by the report of the Special Master and set forth in the judgment decree in June of 1975 by the Supreme Court of the United States in the litigation styled United States v. State of Louisiana, et al No. 9 Original, having Coordinates of X = 2,738,600.00 and Y = 348,516.07; Thence Northeasterly along the said Coastline to a point on the North boundary of said Block 24 having Coordinates of X = 2,741,119.96 and Y = 351,830.00; Thence East 12,230.04 feet along the said North boundary of said Block 24 to the point of beginning, containing approximately **2,401.42 acres**, all as more particularly outlined on a plat on file in the Office of Mineral Resources, Department of Natural Resources. All bearings, distances and coordinates are based on Louisiana Coordinate System of 1927, (North or South Zone).

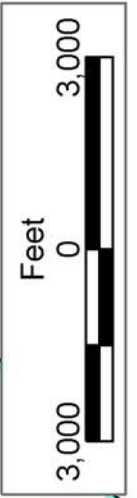
NOTE: The above description of the Tract nominated for lease has been provided and corrected, where required, exclusively by the nomination party. Any mineral lease selected from this Tract and awarded by the Louisiana State Mineral Board shall be without warranty of any kind, either express, implied, or statutory, including, but not limited to, the implied warranties of merchantability and fitness for a particular purpose. Should the mineral lease awarded by the Louisiana State Mineral Board be subsequently modified, cancelled or abrogated due to the existence of conflicting leases, operating agreements, private claims or other future obligations or conditions which may affect all or any portion of the leased Tract, it shall not relieve the Lessee of the obligation to pay any bonus due thereon to the Louisiana State Mineral Board, nor shall the Louisiana State Mineral Board be obligated to refund any consideration paid by the Lessor prior to such modification, cancellation, or abrogation, including, but not limited to, bonuses, rentals and royalties.

NOTE: The State of Louisiana does hereby reserve, and this lease shall be subject to, the imprescriptible right of surface use in the nature of a servitude in favor of the Department of Natural Resources, including its Offices and Commissions, for the sole purpose of implementing, constructing, servicing and maintaining approved coastal zone management and/or restoration projects. Utilization of any and all rights derived

under this lease by the mineral lessee, its agents, successors or assigns, shall not interfere with nor hinder the reasonable surface use by the Department of Natural Resources, its Offices or Commissions, as herein above reserved.

Applicant: Oil And Gas Resources, Inc.

Bidder	Cash Payment	Price/Acre	Rental	Oil	Gas	Other



P.O.B.
X=2,753,350.00
Y=351,830.00

PLAQUEMINES PARISH

BRETON SOUND AREA

BLOCK MP0017

MAIN PASS
AREA, REVISED

BLOCK BS0024

SL 16273

SL 16258

SL 17070

SL 18028

TRACT 36414 - Portion of Block 17, Main Pass Area, Revised, Plaquemines Parish, Louisiana

The beds and bottoms of all water bodies belonging to the State of Louisiana located in that portion of Block 17, Main Pass Area, Revised, together with any present lands formed by accretion to the shoreline, located in Plaquemines Parish, Louisiana, and not presently under mineral lease on July 14, 2004, the geographical area of which is more fully described as follows: Beginning at the Northwest corner of Block 17, Main Pass Area, Revised, having Coordinates of X = 2,753,350.00 and Y = 351,830.00; Thence East 7,353.00 feet along the North boundary of said Block 17 to a point having Coordinates of X = 2,760,703.00 and Y = 351,830.00; Thence South 8,206.00 feet to a point on the three mile line having Coordinates of X = 2,760,703.00 and Y = 343,624.00; Thence along the said three mile line the following courses: Southwesterly to a point having Coordinates of X = 2,757,791.00 and Y = 341,265.00; Southwesterly on an arc having a radius of 18,240.60 feet and a center at X = 2,746,309.00 and Y = 355,438.00 to a point having Coordinates X = 2,756,022.00 and Y = 339,999.00; Southwesterly to a point having Coordinates of X = 2,754,136.00 and Y = 338,812.00; Southwesterly to a point on the West boundary of said Block 17 having Coordinates of X = 2,753,350.00 and Y = 337,778.30; Thence North 14,051.70 feet along the said West boundary of Block 17 to the point of beginning, containing approximately **1,865.43 acres, LESS AND EXCEPT** that portion thereof, if any, lying seaward of the line three nautical miles from the coast line of Louisiana, as said three mile line has been decreed by the Supreme Court of the United States, as determined by a Special Master appointed therein, in litigation styled **United States v. State of Louisiana et al No. 9 Original**, in 1975, all as more particularly outlined on a plat in the Office of Mineral Resources, Department of Natural Resources. All bearings, distances and coordinates are based on the Louisiana Coordinate System of 1927, (South Zone).

NOTE: The above description of the Tract nominated for lease has been provided and corrected, where required, exclusively by the nomination party. Any mineral lease selected from this Tract and awarded by the Louisiana State Mineral Board shall be without warranty of any kind, either express, implied, or statutory, including, but not limited to, the implied warranties of merchantability and fitness for a particular purpose. Should the mineral lease awarded by the Louisiana State Mineral Board be subsequently modified, cancelled or abrogated due to the existence of conflicting leases, operating agreements, private claims or other future obligations or conditions which may affect all or any portion of the leased Tract, it shall not relieve the Lessee of the obligation to pay any bonus due thereon to the Louisiana State Mineral Board, nor shall the Louisiana State Mineral Board be obligated to refund any consideration paid by the Lessor prior to such modification, cancellation, or abrogation, including, but not limited to, bonuses, rentals and royalties.

NOTE: The State of Louisiana does hereby reserve, and this lease shall be subject to, the imprescriptible right of surface use in the nature of a servitude in favor of the Department of Natural Resources, including its Offices and Commissions, for the sole purpose of implementing, constructing, servicing and maintaining approved coastal zone management and/or restoration projects. Utilization of any and all rights derived under this lease by the mineral lessee, its agents, successors or assigns, shall not interfere with nor hinder the reasonable surface use by the Department of Natural Resources, its Offices or Commissions, as herein above reserved.

Applicant: Oil And Gas Resources, Inc.

Bidder	Cash Payment	Price/Acre	Rental	Oil	Gas	Other



SL 17419

SL 17418

MAIN PASS AREA, REVISED

US

LA

BLOCK MP0017

P.O.B.
X=2,753,350.00
Y=351,830.00

BLOCK BS0024

PLAQUEMINES PARISH

BRETON SOUND AREA

SL 17063



TRACT 36415 - Portion of Block 23, Breton Sound Area, Plaquemines Parish, Louisiana

The beds and bottoms of all water bodies belonging to the State of Louisiana located in that portion of Block 23, Breton Sound Area, together with any present lands formed by accretion to the shoreline, located in Plaquemines Parish, Louisiana, and not presently under mineral lease on July 14, 2004, the geographical area of which is more fully described as follows: Beginning at a point on East boundary of Block 23, Breton Sound Area, also being the Northeast corner of State Lease No. 18028, having Coordinates of X = 2,738,600.00 and Y = 339,580.00; Thence South 67 degrees 42 minutes 52 seconds West 6,592.42 feet along the North boundary of said State Lease No. 18028 to its most Westerly corner on the South boundary of said Block 23 having Coordinates of X = 2,732,500.00 and Y = 337,080.00; Thence West 2,596.17 feet along the said South boundary of said Block 23 to a point on the Coastline as defined by the report of the Special Master and set forth in the judgment decree in June of 1975 by the Supreme Court of the United States in the litigation styled United States v. State of Louisiana, et al No. 9 Original, having Coordinates of X = 2,729,903.83 and Y = 337,080.00; Thence Northeasterly along the said Coastline to the Southwest corner of State Lease No.16258, as amended, having Coordinates of X = 2,734,086.12 and Y = 342,580.00; Thence along the Southern, Eastern and Northern boundaries of said State Lease No. 16258, as amended, the following courses: North 78 degrees 00 minutes 15 seconds East 2,161.07 feet to its Southeast corner having Coordinates of X = 2,736,200.00 and Y = 343,029.16; Thence North 1,200.84 feet to its Northeast corner having Coordinates of X = 2,736,200.00 and Y = 344,230.00; Thence North 70 degrees 40 minutes 53 seconds West 718.85 feet to its Northwest corner on the said Coastline having Coordinates of X = 2,735,521.63 and Y = 344,467.81; Thence Northeasterly along the said Coastline to a point on the East boundary of said Block 23 having Coordinates of X = 2,738,600.00 and Y = 348,516.07; Thence South 8,936.07 feet along the said East boundary of said Block 23 to the point of beginning, containing approximately **918.73 acres**, all as more particularly outlined on a plat on file in the Office of Mineral Resources, Department of Natural Resources. All bearings, distances and coordinates are based on Louisiana Coordinate System of 1927, (North or South Zone).

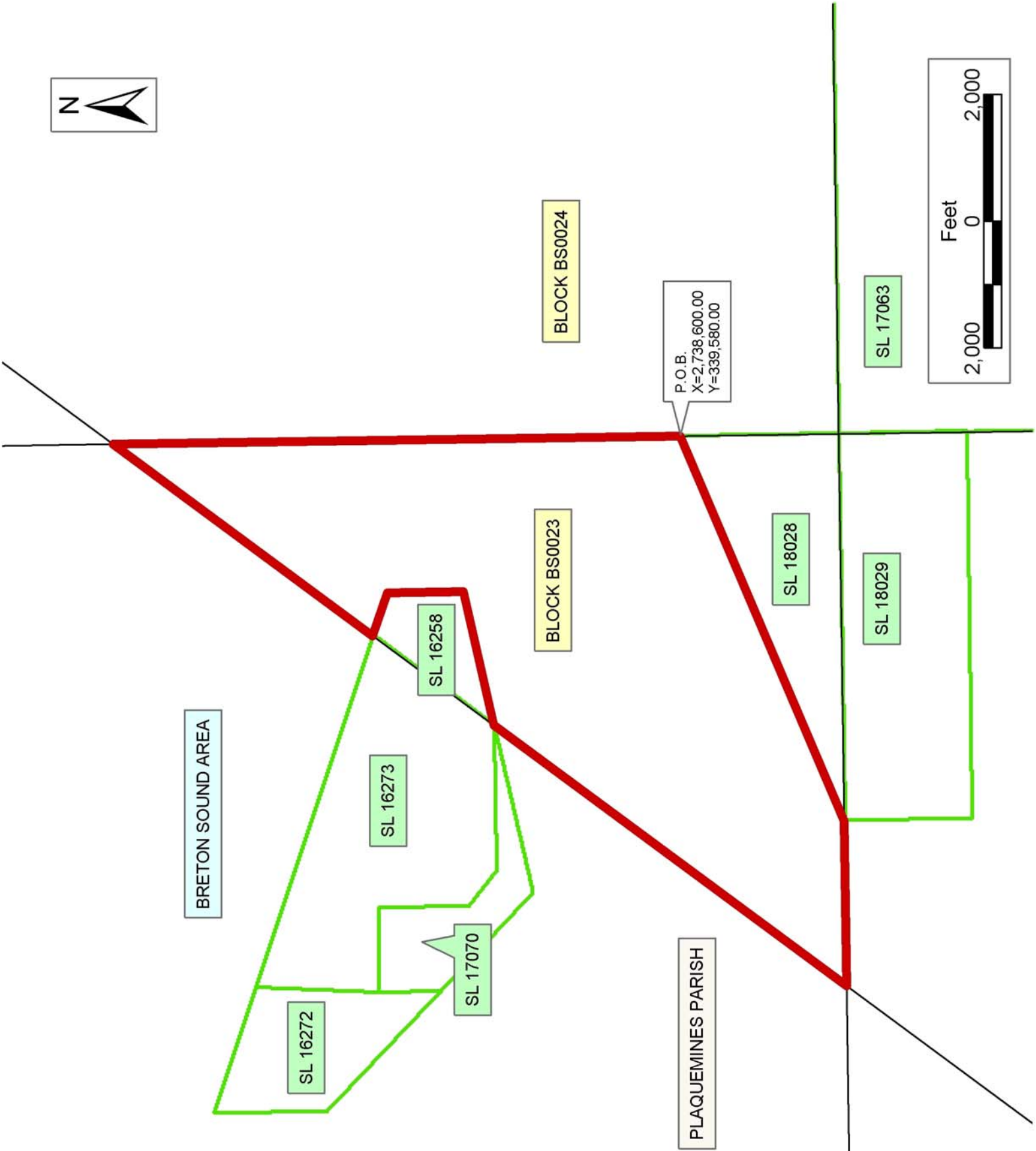
NOTE: The above description of the Tract nominated for lease has been provided and corrected, where required, exclusively by the nomination party. Any mineral lease selected from this Tract and awarded by the Louisiana State Mineral Board shall be without warranty of any kind, either express, implied, or statutory, including, but not limited to, the implied warranties of merchantability and fitness for a particular purpose. Should the mineral lease awarded by the Louisiana State Mineral Board be subsequently modified, cancelled or abrogated due to the existence of conflicting leases, operating agreements, private claims or other future obligations or conditions which may affect all or any portion of the leased Tract, it shall not relieve the Lessee of the obligation to pay any bonus due thereon to the Louisiana State Mineral Board, nor shall

the Louisiana State Mineral Board be obligated to refund any consideration paid by the Lessor prior to such modification, cancellation, or abrogation, including, but not limited to, bonuses, rentals and royalties.

NOTE: The State of Louisiana does hereby reserve, and this lease shall be subject to, the imprescriptible right of surface use in the nature of a servitude in favor of the Department of Natural Resources, including its Offices and Commissions, for the sole purpose of implementing, constructing, servicing and maintaining approved coastal zone management and/or restoration projects. Utilization of any and all rights derived under this lease by the mineral lessee, its agents, successors or assigns, shall not interfere with nor hinder the reasonable surface use by the Department of Natural Resources, its Offices or Commissions, as herein above reserved.

Applicant: Oil And Gas Resources, Inc.

Bidder	Cash Payment	Price/Acre	Rental	Oil	Gas	Other



TRACT 36416 - Portion of Block 24, Breton Sound Area, Plaquemines Parish, Louisiana

The beds and bottoms of all water bodies belonging to the State of Louisiana located in that portion of Block 24, Breton Sound Area, together with any present lands formed by accretion to the shoreline, located in Plaquemines Parish, Louisiana, and not presently under mineral lease on July 14, 2004, the geographical area of which is more fully described as follows: Beginning at the Southwest corner of Block 24, Breton Sound Area, having Coordinates of X = 2,738,600.00 and Y = 337,080.00; Thence North 7,375.00 feet along the West boundary of said Block 24 to a point having Coordinates of X = 2,738,600.00 and Y = 344,455.00; Thence East 14,750.00 feet to a point on the East boundary of said Block 24 having Coordinates of X = 2,753,350.00 and Y = 344,455.00; Thence South 6,676.70 feet along the said East boundary of said Block 24 to a point on the three mile line having Coordinates of X = 2,753,350.00 and Y = 337,778.30; Thence Southwesterly along the said three mile line to a point on the South boundary of said Block 24 having Coordinates of X = 2,752,819.03 and Y = 337,080.00; Thence West 14,219.03 feet along the said South boundary of said Block 24 to the point of beginning, containing approximately **2,493.02 acres, LESS AND EXCEPT** that portion thereof, if any, lying seaward of the line three nautical miles from the coast line of Louisiana, as said three mile line has been decreed by the Supreme Court of the United States, as determined by a Special Master appointed therein, in litigation styled **United States v. State of Louisiana et al No. 9 Original**, in 1975, all as more particularly outlined on a plat in the Office of Mineral Resources, Department of Natural Resources. All bearings, distances and coordinates are based on the Louisiana Coordinate System of 1927, (South Zone).

NOTE: The above description of the Tract nominated for lease has been provided and corrected, where required, exclusively by the nomination party. Any mineral lease selected from this Tract and awarded by the Louisiana State Mineral Board shall be without warranty of any kind, either express, implied, or statutory, including, but not limited to, the implied warranties of merchantability and fitness for a particular purpose. Should the mineral lease awarded by the Louisiana State Mineral Board be subsequently modified, cancelled or abrogated due to the existence of conflicting leases, operating agreements, private claims or other future obligations or conditions which may affect all or any portion of the leased Tract, it shall not relieve the Lessee of the obligation to pay any bonus due thereon to the Louisiana State Mineral Board, nor shall the Louisiana State Mineral Board be obligated to refund any consideration paid by the Lessor prior to such modification, cancellation, or abrogation, including, but not limited to, bonuses, rentals and royalties.

NOTE: The State of Louisiana does hereby reserve, and this lease shall be subject to, the imprescriptible right of surface use in the nature of a servitude in favor of the Department of Natural Resources, including its Offices and Commissions, for the sole purpose of implementing, constructing, servicing and maintaining approved coastal zone management

and/or restoration projects. Utilization of any and all rights derived under this lease by the mineral lessee, its agents, successors or assigns, shall not interfere with nor hinder the reasonable surface use by the Department of Natural Resources, its Offices or Commissions, as herein above reserved.

Applicant: Oil And Gas Resources, Inc.

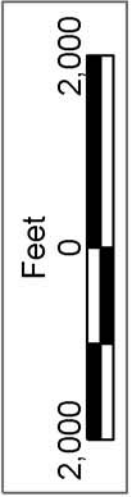
Bidder	Cash Payment	Price/Acre	Rental	Oil	Gas	Other



MAIN PASS
AREA, REVISED

LA

US



PLAQUEMINES PARISH

BRETON SOUND AREA

BLOCK BS0024

SL 17063

BLOCK BS0025

P.O.B.
X=2,738,600.00
Y=337,080.00

SL 18028

SL 18029

TRACT 36417 - Portion of Block 26, Breton Sound Area, Plaquemines Parish, Louisiana

The beds and bottoms of all water bodies belonging to the State of Louisiana located in that portion of Block 26, Breton Sound Area, together with any present lands formed by accretion to the shoreline, located in Plaquemines Parish, Louisiana, and not presently under mineral lease on July 14, 2004, the geographical area of which is more fully described as follows: Beginning at a point on the East boundary of Block 26, Breton Sound Area, having Coordinates of X = 2,738,600.00 and Y = 329,705.00; Thence West 14,750.00 feet to a point on the West boundary of said Block 26 having Coordinates of X = 2,723,850.00 and Y = 329,705.00; Thence North 1,034.83 feet along the said West boundary of Block 26 to a point on the Coastline as defined by the report of the Special Master and set forth in the judgment decree in June of 1975 by the Supreme Court of the United States in the litigation styled United States v. State of Louisiana, et al No. 9 Original, having Coordinates of X = 2,723,850.00 and Y = 330,739.83; Thence along the said Coastline the following courses: Northeasterly to a point having Coordinates of X = 2,723,975 and Y = 330,868; Northeasterly to a point having Coordinates of X = 2,726,852 and Y = 333,103; Northeasterly to a point having Coordinates of X = 2,727,653 and Y = 334,120; Northeasterly to a point on the North boundary of said Block 26 having Coordinates of X = 2,729,903.83 and Y = 337,080.00; Thence East 2,596.17 feet along the said North boundary of said Block 26 to the Northwest corner of State Lease No. 18029 having Coordinates of X = 2,732,500.00 and Y = 337,080.00; Thence South 2,000.00 feet along the West boundary of said State Lease No. 18029 to its Southwest corner having Coordinates of X = 2,732,500.00 and Y = 335,080.00; Thence East 6,100.00 feet along the South boundary of said State Lease No. 18029 to its Southeast corner on the East boundary of said Block 26 having Coordinates of X = 2,738,600.00 and Y = 335,080.00; Thence South 5,375.00 feet along the said East boundary of said Block 26 to the point of beginning, containing approximately **1,722.46 acres**, all as more particularly outlined on a plat on file in the Office of Mineral Resources, Department of Natural Resources. All bearings, distances and coordinates are based on Louisiana Coordinate System of 1927, (North or South Zone).

NOTE: The above description of the Tract nominated for lease has been provided and corrected, where required, exclusively by the nomination party. Any mineral lease selected from this Tract and awarded by the Louisiana State Mineral Board shall be without warranty of any kind, either express, implied, or statutory, including, but not limited to, the implied warranties of merchantability and fitness for a particular purpose. Should the mineral lease awarded by the Louisiana State Mineral Board be subsequently modified, cancelled or abrogated due to the existence of conflicting leases, operating agreements, private claims or other future obligations or conditions which may affect all or any portion of the leased Tract, it shall not relieve the Lessee of the obligation to pay any bonus due thereon to the Louisiana State Mineral Board, nor shall the Louisiana State Mineral Board be obligated to refund any consideration

paid by the Lessor prior to such modification, cancellation, or abrogation, including, but not limited to, bonuses, rentals and royalties.

NOTE: The State of Louisiana does hereby reserve, and this lease shall be subject to, the imprescriptible right of surface use in the nature of a servitude in favor of the Department of Natural Resources, including its Offices and Commissions, for the sole purpose of implementing, constructing, servicing and maintaining approved coastal zone management and/or restoration projects. Utilization of any and all rights derived under this lease by the mineral lessee, its agents, successors or assigns, shall not interfere with nor hinder the reasonable surface use by the Department of Natural Resources, its Offices or Commissions, as herein above reserved.

Applicant: Oil And Gas Resources, Inc.

Bidder	Cash Payment	Price/Acre	Rental	Oil	Gas	Other



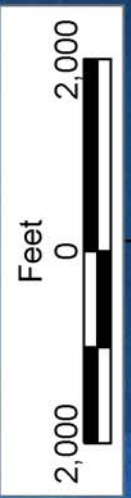
SL 17063

SL 18028

SL 18029

SL 2326

P.O.B.
X=2,738,600.00
Y=329,705.00



BLOCK BS0026

BRETON SOUND AREA

PLAQUEMINES PARISH