

TRACT 35523 - Portion of Block 19, Vermilion Block Area, Vermilion Parish, Louisiana

The beds and bottoms of all water bodies belonging to the State of Louisiana located in that portion of Block 19, Vermilion Block Area, together with any present lands formed by accretion to the shoreline, located in Vermilion Parish, Louisiana, and not presently under mineral lease on July 9, 2003, the geographical area of which is more fully described as follows: Beginning at the Northeast corner of Block 19, Vermilion Area, Revised, having Coordinates of X = 1,617,866.08 and Y = 317,582.82; thence South 6,809.23 feet along the East line of said Block 19 to a point having Coordinates of X = 1,617,866.08 and Y = 310,773.59; thence Northwesterly on a straight line to a point having Coordinates of X = 1,614,565 and Y = 311,235; thence Northwesterly on an arc having a radius of 18,240.60 feet and a center at X = 1,617,090 and Y = 329,300 to a point having Coordinates of X = 1,613,148 and Y = 311,491; thence Northwesterly on a straight line to a point having Coordinates of X = 1,611,814 and Y = 311,591; thence Northwesterly on an arc having a radius of 18,240.60 feet and a center at X = 1,613,190 and Y = 329,780 to a point having Coordinates of X = 1,609,960 and Y = 311,828; thence Northwesterly on a straight line to a point having Coordinates of X = 1,606,070 and Y = 312,528; thence Northwesterly on an arc having a radius of 18,240.60 feet and a center at X = 1,609,300 and Y = 330,480 to a point having Coordinates of X = 1,604,702 and Y = 312,829; thence Northwesterly on a straight line to a point having Coordinates of X = 1,604,290 and Y = 312,866; thence Northwesterly on an arc having a radius of 18,240.60 feet and a center at X = 1,605,965 and Y = 331,030 to a point on the West line of said Block 19 having Coordinates of X = 1,603,108.03 and Y = 313,014.08; thence North 4,568.74 feet along the West line of said Block 19 to its Northwest corner having Coordinates of X = 1,603,108.03 and Y = 317,582.82; thence East 14,758.05 feet along the North line of said Block 19 to the point of beginning, containing approximately **1,944.79 acres, LESS AND EXCEPT** that portion thereof, if any, lying seaward of the line three nautical miles from the coast line of Louisiana, as said three mile line has been decreed by the Supreme Court of the United States, as determined by a Special Master appointed therein, in litigation styled **United States v. State of Louisiana et al No. 9 Original**, in 1975, all as more particularly outlined on a plat in the Office of Mineral Resources, Department of Natural Resources. All bearings, distances and coordinates are based on the Louisiana Coordinate System of 1927, (South Zone).

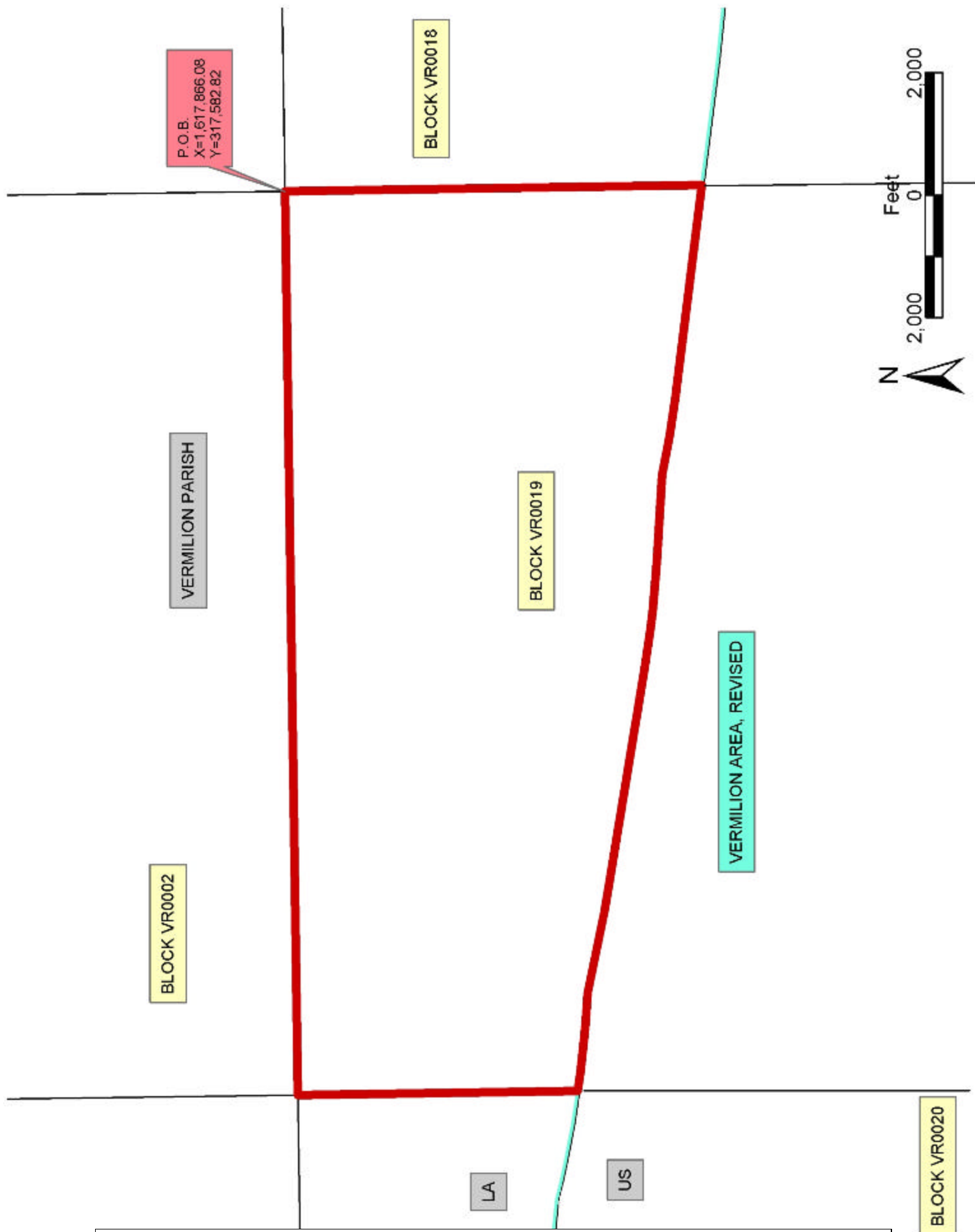
NOTE: The above description of the Tract nominated for lease has been provided and corrected, where required, exclusively by the nomination party. Any mineral lease selected from this Tract and awarded by the Louisiana State Mineral Board shall be without warranty of any kind, either express, implied, or statutory, including, but not limited to, the implied warranties of merchantability and fitness for a particular purpose. Should the mineral lease awarded by the Louisiana State Mineral Board be subsequently modified, cancelled or abrogated due to the existence of conflicting leases, operating agreements, private claims or

other future obligations or conditions which may affect all or any portion of the leased Tract, it shall not relieve the Lessee of the obligation to pay any bonus due thereon to the Louisiana State Mineral Board, nor shall the Louisiana State Mineral Board be obligated to refund any consideration paid by the Lessor prior to such modification, cancellation, or abrogation, including, but not limited to, bonuses, rentals and royalties.

NOTE: The State of Louisiana does hereby reserve, and this lease shall be subject to, the imprescriptible right of surface use in the nature of a servitude in favor of the Department of Natural Resources, including its Offices and Commissions, for the sole purpose of implementing, constructing, servicing and maintaining approved coastal zone management and/or restoration projects. Utilization of any and all rights derived under this lease by the mineral lessee, its agents, successors or assigns, shall not interfere with nor hinder the reasonable surface use by the Department of Natural Resources, its Offices or Commissions, as herein above reserved.

Applicant: Dara Doty

Bidder	Cash Payment	Price / Acre	Rental	Oil	Gas	Other



TRACT 35524 - Portion of Block 18, Vermilion Block Area, Vermilion Parish, Louisiana

The beds and bottoms of all water bodies belonging to the State of Louisiana located in that portion of Block 18, Vermilion Block Area, together with any present lands formed by accretion to the shoreline, located in Vermilion Parish, Louisiana, and not presently under mineral lease on July 9, 2003, the geographical area of which is more fully described as follows: Beginning at the Northwest corner of Block 18, Vermilion Area, Revised, having Coordinates of X = 1,617,866.08 and Y = 317,582.82; thence East 8,260.34 feet along the North line of said Block 18 to a point, also being the Northwest corner of State Lease No. 16904 having Coordinates of X = 1,626,126.42 and Y = 317,582.82; thence along the boundary of said State Lease No. 16904 the following courses: South 6,000.00 feet and East 6,497.70 feet to the Southeast corner of said State Lease No. 16904, also being a point on the East line of said Block 18 having Coordinates of X = 1,632,624.12 and Y = 311,582.82; thence South 2,495.42 feet along the East line of said Block 18 to a point having Coordinates of X = 1,632,624.12 and Y = 309,087.40; thence Northwesterly on a straight line to a point having Coordinates of X = 1,627,130 and Y = 309,807; thence Northwesterly on a straight line to a point having Coordinates of X = 1,620,757 and Y = 310,390; thence Northwesterly on an arc having a radius of 18,240.60 feet and a center at X = 1,622,420 and Y = 328,555 to a point having Coordinates of X = 1,619,895 and Y = 310,490; thence Northwesterly on a straight line to a point on the West line of said Block 18 having Coordinates of X = 1,617,866.08 and Y = 310,773.59; thence North 6,809.23 feet along the West line of said Block 18 to the point of beginning, containing approximately **1,691.29 acres, LESS AND EXCEPT** that portion thereof, if any, lying seaward of the line three nautical miles from the coast line of Louisiana, as said three mile line has been decreed by the Supreme Court of the United States, as determined by a Special Master appointed therein, in litigation styled **United States v. State of Louisiana et al No. 9 Original**, in 1975, all as more particularly outlined on a plat in the Office of Mineral Resources, Department of Natural Resources. All bearings, distances and coordinates are based on the Louisiana Coordinate System of 1927, (South Zone).

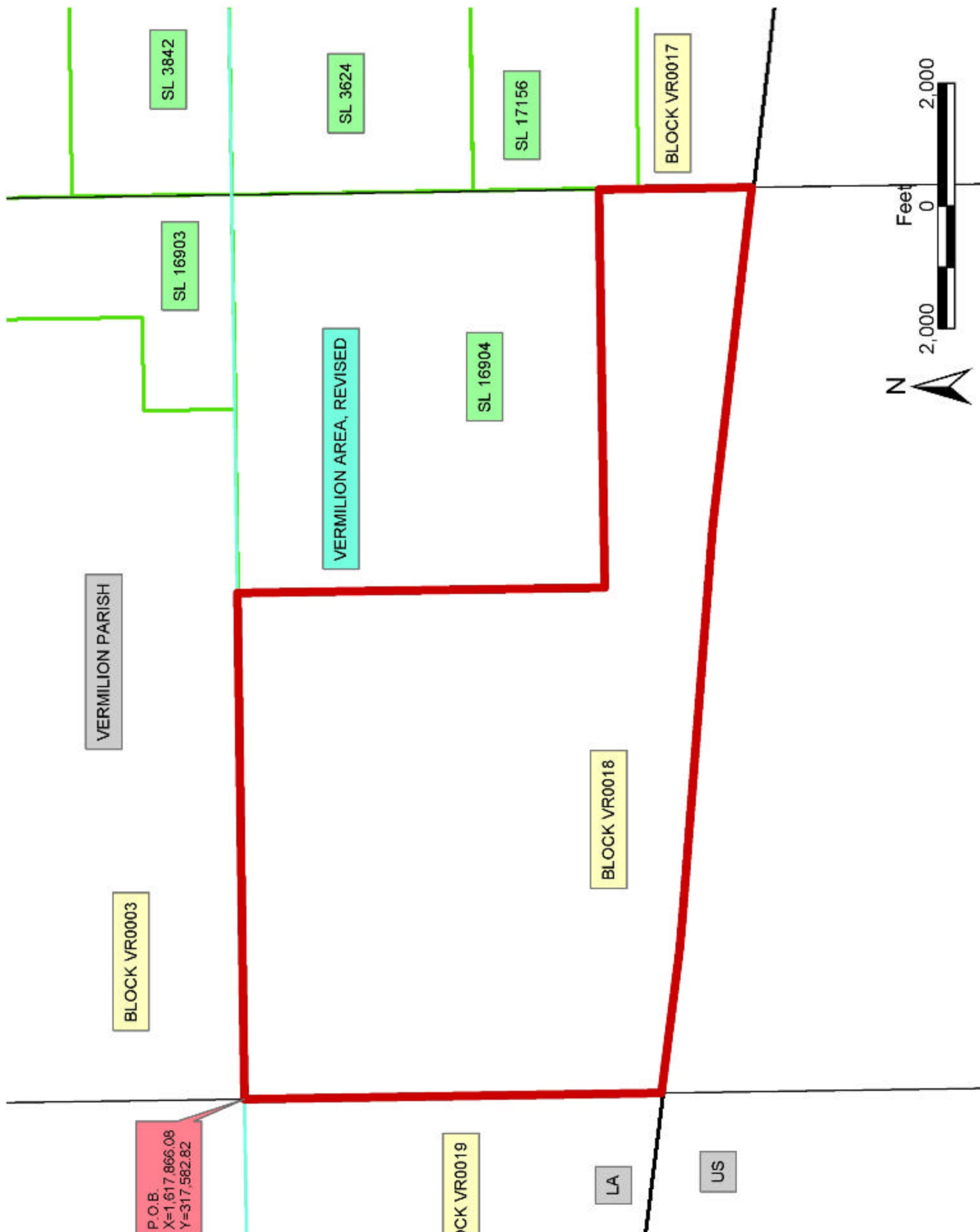
NOTE: The above description of the Tract nominated for lease has been provided and corrected, where required, exclusively by the nomination party. Any mineral lease selected from this Tract and awarded by the Louisiana State Mineral Board shall be without warranty of any kind, either express, implied, or statutory, including, but not limited to, the implied warranties of merchantability and fitness for a particular purpose. Should the mineral lease awarded by the Louisiana State Mineral Board be subsequently modified, cancelled or abrogated due to the existence of conflicting leases, operating agreements, private claims or other future obligations or conditions which may affect all or any portion of the leased Tract, it shall not relieve the Lessee of the obligation to pay any bonus due thereon to the Louisiana State Mineral Board, nor shall the Louisiana State Mineral Board be obligated to refund any consideration

paid by the Lessor prior to such modification, cancellation, or abrogation, including, but not limited to, bonuses, rentals and royalties.

NOTE: The State of Louisiana does hereby reserve, and this lease shall be subject to, the imprescriptible right of surface use in the nature of a servitude in favor of the Department of Natural Resources, including its Offices and Commissions, for the sole purpose of implementing, constructing, servicing and maintaining approved coastal zone management and/or restoration projects. Utilization of any and all rights derived under this lease by the mineral lessee, its agents, successors or assigns, shall not interfere with nor hinder the reasonable surface use by the Department of Natural Resources, its Offices or Commissions, as herein above reserved.

Applicant: Dara Doty

Bidder	Cash Payment	Price / Acre	Rental	Oil	Gas	Other



TRACT 35525 - Portion of Block 9, Eugene Island Area, Revised, Iberia Parish, Louisiana

The beds and bottoms of all water bodies belonging to the State of Louisiana located in that portion of Block 9, Eugene Island Area, Revised, together with any present lands formed by accretion to the shoreline, located in Iberia Parish, Louisiana, and not presently under mineral lease on July 9, 2003, the geographical area of which is more fully described as follows: Beginning at the Northwest corner of Block 9, Eugene Island Area, Revised, having Coordinates of X = 1,834,508.15 and Y = 269,627.02; thence East 15,270.25 feet to the Northeast corner of said Block 9, having Coordinates of X = 1,849,778.40 and Y = 269,627.02; thence South 5,733.04 feet to a point having Coordinates of X = 1,849,778.40 and Y = 263,893.98; thence West 2,000.00 feet to the Northeast corner of State Lease No. 16868 having Coordinates of X = 1,847,778.40 and Y = 263,893.98; thence continue West 5,000.00 feet along the North line of said State Lease No. 16868 to its Northwest corner having Coordinates of X = 1,842,778.40 and Y = 263,893.98; thence continue West 8,296.24 feet to a point on the West line of said Block 9, having Coordinates of X = 1,834,482.16 and Y = 263,893.98; thence Northerly along the West line of said Block 9 to the point of beginning, containing approximately **2,011.47 acres**, all as more particularly outlined on a plat on file in the Office of Mineral Resources, Department of Natural Resources. All bearings, distances and coordinates are based on Louisiana Coordinate System of 1927, (North or South Zone).

NOTE: The above description of the Tract nominated for lease has been provided and corrected, where required, exclusively by the nomination party. Any mineral lease selected from this Tract and awarded by the Louisiana State Mineral Board shall be without warranty of any kind, either express, implied, or statutory, including, but not limited to, the implied warranties of merchantability and fitness for a particular purpose. Should the mineral lease awarded by the Louisiana State Mineral Board be subsequently modified, cancelled or abrogated due to the existence of conflicting leases, operating agreements, private claims or other future obligations or conditions which may affect all or any portion of the leased Tract, it shall not relieve the Lessee of the obligation to pay any bonus due thereon to the Louisiana State Mineral Board, nor shall the Louisiana State Mineral Board be obligated to refund any consideration paid by the Lessor prior to such modification, cancellation, or abrogation, including, but not limited to, bonuses, rentals and royalties.

NOTE: The State of Louisiana does hereby reserve, and this lease shall be subject to, the imprescriptible right of surface use in the nature of a servitude in favor of the Department of Natural Resources, including its Offices and Commissions, for the sole purpose of implementing, constructing, servicing and maintaining approved coastal zone management and/or restoration projects. Utilization of any and all rights derived under this lease by the mineral lessee, its agents, successors or assigns, shall not interfere with nor hinder the reasonable surface use by the

Department of Natural Resources, its Offices or Commissions, as herein above reserved.

NOTE: The Department of Wildlife and Fisheries has designated certain areas in the coastal waters of the State of Louisiana as Oyster Seed Bed Areas. The exact location of those Seed Bed Areas must be obtained from the Department of Wildlife and Fisheries and any work done under a mineral lease from the State of Louisiana may necessarily be conducted in conformity with the rules and regulations promulgated by the said Department of Wildlife and Fisheries for Oyster Seed Bed Areas.

Applicant: Ric Bajon And Associates

Bidder	Cash Payment	Price / Acre	Rental	Oil	Gas	Other



EUGENE ISLAND AREA, REVISED

BLOCK EI0007

S.L. 17695

BLOCK EI0010

BLOCK EI0008

P.O.B.
X=1,834,508.15
Y=269,627.02

BLOCK SM0300

SOUTH MARSH
ISLAND AREA

S.L. 16668

BLOCK EI0009

IBERIA PARISH

LOUISIANA
UNITED STATES



TRACT 35526 - Portion of Block 9, Eugene Island Area, Revised, Iberia Parish, Louisiana

The beds and bottoms of all water bodies belonging to the State of Louisiana located in that portion of Block 9, Eugene Island Area, Revised, together with any present lands formed by accretion to the shoreline, located in Iberia Parish, Louisiana, and not presently under mineral lease on July 9, 2003, the geographical area of which is more fully described as follows: Beginning at a point on the West line of Block 9, Eugene Island Area, Revised, having Coordinates of X = 1,834,482.16 and Y = 263,893.98; thence East 8,296.24 feet to the Northwest corner of State Lease No. 16868, having Coordinates of X = 1,842,778.40 and Y = 263,893.98; thence along the boundaries of said State Lease No. 16868 the following courses: South 5,000.00 feet, East 5,000.00 feet and North 5,000.00 feet to the Northeast corner of said State Lease No. 16868 having Coordinates of X = 1,847,778.40 and Y = 263,893.98; thence East 2,000.00 feet to a point on the East line of said Block 9, having Coordinates of X = 1,849,778.40 and Y = 263,893.98; thence South 5,095.88 feet along the East line of said Block 9 to its point of intersection with the three mile line as set out in the June, 1975 decree of the Supreme Court, having Coordinates of X = 1,849,778.40 and Y = 258,798.10; thence Southwesterly along a curve having a radius of 18,240.60 feet and a center at X = 1,843,467 and Y = 275,912 to a point having Coordinates of X = 1,848,729.00 and Y = 258,447.00; thence Southwesterly along a curve having a radius of 18,240.60 feet and a center at X = 1,835,344 and Y = 270,839 to a point having Coordinates of X = 1,845,048.17 and Y = 255,393.98; thence West 10,604.54 feet to a point on the West line of said Block 9, having Coordinates of X = 1,834,443.63 and Y = 255,393.98; thence Northeasterly along the West line of said Block 9 to the point of beginning, containing approximately **2,219.55 acres, LESS AND EXCEPT** that portion thereof, if any, lying seaward of the line three nautical miles from the coast line of Louisiana, as said three mile line has been decreed by the Supreme Court of the United States, as determined by a Special Master appointed therein, in litigation styled **United States v. State of Louisiana et al No. 9 Original**, in 1975, all as more particularly outlined on a plat in the Office of Mineral Resources, Department of Natural Resources. All bearings, distances and coordinates are based on the Louisiana Coordinate System of 1927, (South Zone).

NOTE: The above description of the Tract nominated for lease has been provided and corrected, where required, exclusively by the nomination party. Any mineral lease selected from this Tract and awarded by the Louisiana State Mineral Board shall be without warranty of any kind, either express, implied, or statutory, including, but not limited to, the implied warranties of merchantability and fitness for a particular purpose. Should the mineral lease awarded by the Louisiana State Mineral Board be subsequently modified, cancelled or abrogated due to the existence of conflicting leases, operating agreements, private claims or other future obligations or conditions which may affect all or any portion of the leased Tract, it shall not relieve the Lessee of the obligation to pay any bonus due thereon to the Louisiana State Mineral Board, nor shall

the Louisiana State Mineral Board be obligated to refund any consideration paid by the Lessor prior to such modification, cancellation, or abrogation, including, but not limited to, bonuses, rentals and royalties.

NOTE: The State of Louisiana does hereby reserve, and this lease shall be subject to, the imprescriptible right of surface use in the nature of a servitude in favor of the Department of Natural Resources, including its Offices and Commissions, for the sole purpose of implementing, constructing, servicing and maintaining approved coastal zone management and/or restoration projects. Utilization of any and all rights derived under this lease by the mineral lessee, its agents, successors or assigns, shall not interfere with nor hinder the reasonable surface use by the Department of Natural Resources, its Offices or Commissions, as herein above reserved.

NOTE: The Department of Wildlife and Fisheries has designated certain areas in the coastal waters of the State of Louisiana as Oyster Seed Bed Areas. The exact location of those Seed Bed Areas must be obtained from the Department of Wildlife and Fisheries and any work done under a mineral lease from the State of Louisiana may necessarily be conducted in conformity with the rules and regulations promulgated by the said Department of Wildlife and Fisheries for Oyster Seed Bed Areas.

Applicant: Ric Bajon And Associates

Bidder	Cash Payment	Price / Acre	Rental	Oil	Gas	Other



TRACT 35527 - Portion of Block 19, Eugene Island Area, Revised, St. Mary Parish, Louisiana

The beds and bottoms of all water bodies belonging to the State of Louisiana located in that portion of Block 19, Eugene Island Area, Revised, together with any present lands formed by accretion to the shoreline, located in St. Mary Parish, Louisiana, and not presently under mineral lease on July 9, 2003, the geographical area of which is more fully described as follows: Beginning at the Northeast corner of Block 19, Eugene Island Area, Revised, having Coordinates of X = 1,939,911.36 and Y = 255,394.00; thence South 9,967.38 feet along the East line of said Block 19 to a point having Coordinates of X = 1,939,911.36 and Y = 245,426.62; thence Northwesterly on a straight line to a point having Coordinates of X = 1,937,446 and Y = 246,505; thence Southwesterly on an arc having a radius of 18,240.60 feet and a center at X = 1,933,172 and Y = 264,238 to a point; also being the Southeast corner of State Lease No. 15211 having Coordinates of X = 1,932,400.28 and Y = 246,013.63; thence North 9,380.37 feet along the East line of said State Lease No. 15211 to its Northeast corner, also being a point on the North line of said Block 19 having Coordinates of X = 1,932,400.28 and Y = 255,394.00; thence East 7,511.08 feet along the North line of said Block 19 to the point of beginning, containing approximately **1,605.46 acres** , **LESS AND EXCEPT** that portion thereof, if any, lying seaward of the line three nautical miles from the coast line of Louisiana, as said three mile line has been decreed by the Supreme Court of the United States, as determined by a Special Master appointed therein, in litigation styled **United States v. State of Louisiana et al No. 9 Original**, in 1975, all as more particularly outlined on a plat in the Office of Mineral Resources, Department of Natural Resources. All bearings, distances and coordinates are based on the Louisiana Coordinate System of 1927, (South Zone).

NOTE: The above description of the Tract nominated for lease has been provided and corrected, where required, exclusively by the nomination party. Any mineral lease selected from this Tract and awarded by the Louisiana State Mineral Board shall be without warranty of any kind, either express, implied, or statutory, including, but not limited to, the implied warranties of merchantability and fitness for a particular purpose. Should the mineral lease awarded by the Louisiana State Mineral Board be subsequently modified, cancelled or abrogated due to the existence of conflicting leases, operating agreements, private claims or other future obligations or conditions which may affect all or any portion of the leased Tract, it shall not relieve the Lessee of the obligation to pay any bonus due thereon to the Louisiana State Mineral Board, nor shall the Louisiana State Mineral Board be obligated to refund any consideration paid by the Lessor prior to such modification, cancellation, or abrogation, including, but not limited to, bonuses, rentals and royalties.

NOTE: The above described tract may be in the vicinity of existing shell reefs where drilling and dredging operations must be conducted in strict

conformity with the regulations adopted by the Louisiana Department of Wildlife and Fisheries and/or the U.S. Corps of Engineers, U.S. Army.

NOTE: The State of Louisiana does hereby reserve, and this lease shall be subject to, the imprescriptible right of surface use in the nature of a servitude in favor of the Department of Natural Resources, including its Offices and Commissions, for the sole purpose of implementing, constructing, servicing and maintaining approved coastal zone management and/or restoration projects. Utilization of any and all rights derived under this lease by the mineral lessee, its agents, successors or assigns, shall not interfere with nor hinder the reasonable surface use by the Department of Natural Resources, its Offices or Commissions, as herein above reserved.

NOTE: The Department of Wildlife and Fisheries has designated certain areas in the coastal waters of the State of Louisiana as Oyster Seed Bed Areas. The exact location of those Seed Bed Areas must be obtained from the Department of Wildlife and Fisheries and any work done under a mineral lease from the State of Louisiana may necessarily be conducted in conformity with the rules and regulations promulgated by the said Department of Wildlife and Fisheries for Oyster Seed Bed Areas.

Applicant: Kevin Caliva & Associates, Ltd.

Bidder	Cash Payment	Price / Acre	Rental	Oil	Gas	Other



TRACT 35528 - Portion of Block 17, Eugene Island Area, Revised, St. Mary Parish, Louisiana

The beds and bottoms of all water bodies belonging to the State of Louisiana located in that portion of Block 17, Eugene Island Area, Revised, together with any present lands formed by accretion to the shoreline, located in St. Mary Parish, Louisiana, and not presently under mineral lease on July 9, 2003, the geographical area of which is more fully described as follows: Beginning at the Southeast corner of Block 17, Eugene Island Area, Revised, having Coordinates of X = 1,969,955.68 and Y = 240,895.42; thence West 15,022.16 feet along the South line of said Block 17 to its Southwest corner having Coordinates of X = 1,954,933.52 and Y = 240,895.42; thence North 3,169.29 feet along the West line of said Block 17 to a point, also being the most Southerly Southwest corner of State Lease No. 14492, as amended, having Coordinates of X = 1,954,933.52 and Y = 244,064.71; thence along the boundary of said State Lease No. 14492 the following courses: East 600.00 feet, North 42 degrees 16 minutes 25 seconds East 743.30 feet and North 36 degrees 14 minutes 27 seconds West 1,860.68 feet to its Northwest corner, also being a point on the West line of said Block 17 having Coordinates of X = 1,954,933.52 and Y = 246,115.42; thence North 2,029.29 feet along the West line of said Block 17 to a point, also being the most Westerly Southwest corner of State Lease No. 16988 having Coordinates of X = 1,954,933.52 and Y = 248,144.71; thence along the boundary of said State Lease No. 16988 the following courses: East 3,550.00 feet, North 550.00 feet, East 3,461.08 feet and North 1,227.24 feet to the most Easterly Northeast corner of said State Lease No. 16988, also being the most Southerly corner of State Lease No. 7870, as amended, having Coordinates of X = 1,961,944.60 and Y = 249,921.95; thence along the boundary of said State Lease No. 7870 the following courses: North 41 degrees 23 minutes 30 seconds East 703.87 and North 47 degrees 38 minutes 16 seconds East 46.83 feet to a point on the Southeast boundary line of said State Lease No. 7870, also being the most Westerly Northwest corner of State Lease No. 16990 having Coordinates of X = 1,962,444.60 and Y = 250,481.55; thence along the boundary of said State Lease No. 16990 the following courses: South 6,281.55 feet and East 7,511.08 feet to the Southeast corner of said State Lease No. 16990, also being a point on the East line of said Block 17 having Coordinates of X = 1,969,955.68 and Y = 244,200.00; thence South 3,304.58 feet along the East line of said Block 17 to the point of beginning, containing approximately **1,857.48 acres**, all as more particularly outlined on a plat on file in the Office of Mineral Resources, Department of Natural Resources. All bearings, distances and coordinates are based on Louisiana Coordinate System of 1927, (North or South Zone).

NOTE: The above description of the Tract nominated for lease has been provided and corrected, where required, exclusively by the nomination party. Any mineral lease selected from this Tract and awarded by the Louisiana State Mineral Board shall be without warranty of any kind, either express, implied, or statutory, including, but not limited to, the implied warranties of merchantability and fitness for a particular

purpose. Should the mineral lease awarded by the Louisiana State Mineral Board be subsequently modified, cancelled or abrogated due to the existence of conflicting leases, operating agreements, private claims or other future obligations or conditions which may affect all or any portion of the leased Tract, it shall not relieve the Lessee of the obligation to pay any bonus due thereon to the Louisiana State Mineral Board, nor shall the Louisiana State Mineral Board be obligated to refund any consideration paid by the Lessor prior to such modification, cancellation, or abrogation, including, but not limited to, bonuses, rentals and royalties.

NOTE: The above described tract may be in the vicinity of existing shell reefs where drilling and dredging operations must be conducted in strict conformity with the regulations adopted by the Louisiana Department of Wildlife and Fisheries and/or the U.S. Corps of Engineers, U.S. Army.

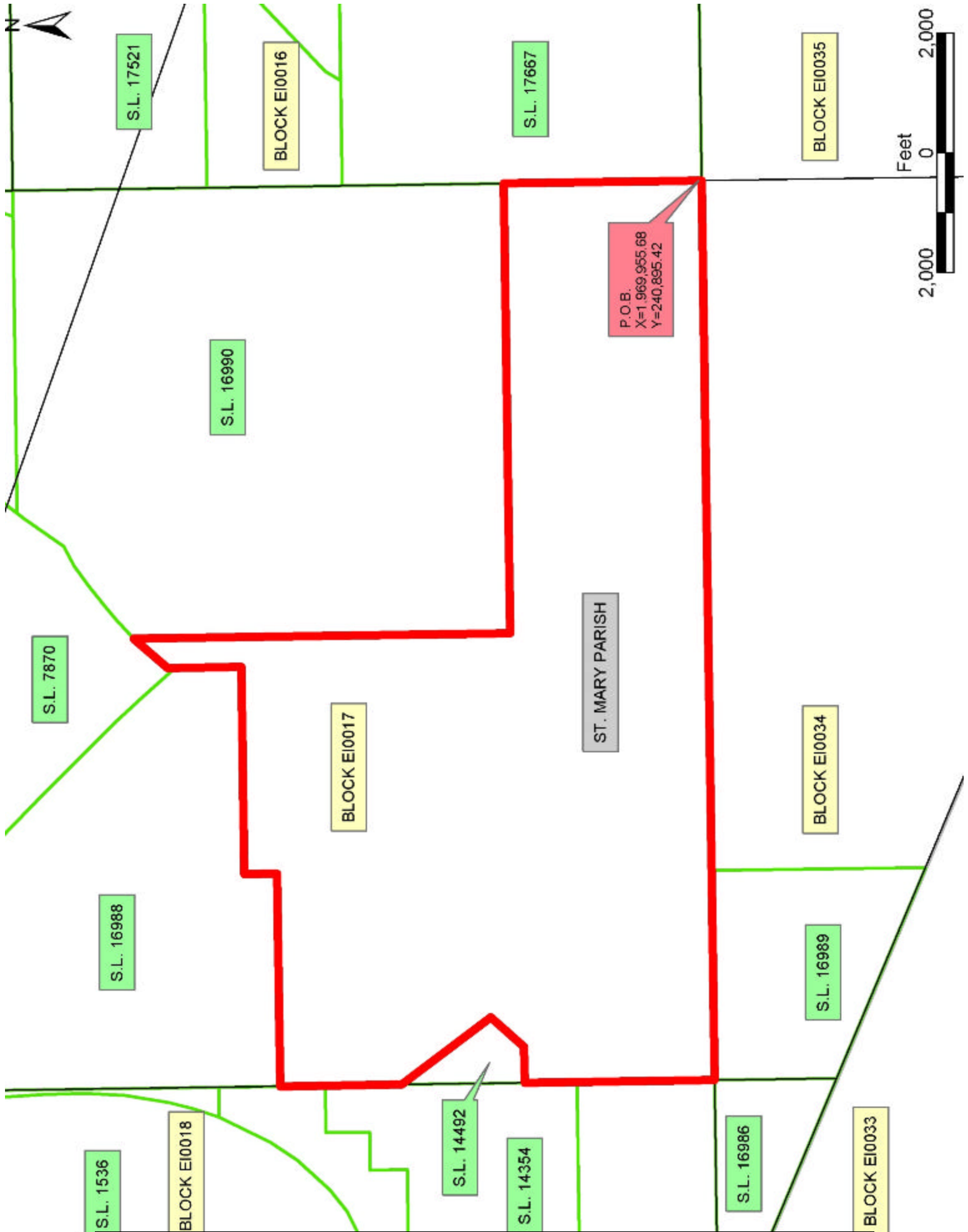
NOTE: The State of Louisiana does hereby reserve, and this lease shall be subject to, the imprescriptible right of surface use in the nature of a servitude in favor of the Department of Natural Resources, including its Offices and Commissions, for the sole purpose of implementing, constructing, servicing and maintaining approved coastal zone management and/or restoration projects. Utilization of any and all rights derived under this lease by the mineral lessee, its agents, successors or assigns, shall not interfere with nor hinder the reasonable surface use by the Department of Natural Resources, its Offices or Commissions, as herein above reserved.

NOTE: It appears, according to our records, that a portion of this Tract is located within the restrictive safety fairway area as set out by the Corps of Engineers, U.S. Army and/or the restrictive anchorage area as set out by the U.S. Coast Guard.

NOTE: The Department of Wildlife and Fisheries has designated certain areas in the coastal waters of the State of Louisiana as Oyster Seed Bed Areas. The exact location of those Seed Bed Areas must be obtained from the Department of Wildlife and Fisheries and any work done under a mineral lease from the State of Louisiana may necessarily be conducted in conformity with the rules and regulations promulgated by the said Department of Wildlife and Fisheries for Oyster Seed Bed Areas.

Applicant: Kevin Caliva & Associates, Ltd.

Bidder	Cash Payment	Price / Acre	Rental	Oil	Gas	Other



TRACT 35529 - Portion of Block 18, Eugene Island Area, Revised, St. Mary Parish, Louisiana

The beds and bottoms of all water bodies belonging to the State of Louisiana located in that portion of Block 18, Eugene Island Area, Revised, together with any present lands formed by accretion to the shoreline, located in St. Mary Parish, Louisiana, and not presently under mineral lease on July 9, 2003, the geographical area of which is more fully described as follows: Beginning at a point on the West line of Block 18, Eugene Island Area, Revised, also being the Southwest corner of State Lease No. 1667, as amended, having Coordinates of X = 1,939,911.36 and Y = 247,079.31; thence along the boundary of said State Lease No. 1667 the following courses: East 7,511.08 feet and North 1,316.11 feet to a point on the East line of said State Lease No. 1667, also being the most Westerly Southwest corner of State Lease No. 1536, as amended, having Coordinates of X = 1,947,422.44 and Y = 248,395.42; thence along the boundary of said State Lease No. 1536 the following courses: East 741.08 feet, South 2,246.75 feet, North 67 degrees 53 minutes 47 seconds East 481.90 feet, South 67 degrees 45 minutes 04 seconds East 237.70 feet and North 87 degrees 03 minutes 52 seconds East 406.75 feet to a point on the Southern boundary line of said State Lease No. 1536, also being the most Westerly Northwest corner of State Lease No. 17121 having Coordinates of X = 1,949,236.22 and Y = 246,260.83; thence South 26 degrees 40 minutes 51 seconds East 3,438.11 feet along the Western boundary line of said State Lease No. 17121 to its most Southerly corner; also being the Southwest corner of State Lease No. 14354, as amended, having Coordinates of X = 1,950,780.00 and Y = 243,188.80; thence East 4,153.52 feet along the South line of said State Lease No. 14354 to its Southeast corner, also being a point on the East line of said Block 18 having Coordinates of X = 1,954,933.52 and Y = 243,188.80; thence South 2,293.38 feet along the East line of said Block 18 to its Southeast corner having Coordinates of X = 1,954,933.52 and Y = 240,895.42; thence West 4,663.08 feet along the South line of said Block 18 to a point having Coordinates of X = 1,950,270.44 and Y = 240,895.42; thence Northwesterly on a straight line to a point on the West line of said Block 18 having Coordinates of X = 1,939,911.36 and Y = 245,426.62; thence North 1,652.69 feet along the West line of said Block 18 to the point of beginning, containing approximately **1,141.43 acres, LESS AND EXCEPT** that portion thereof, if any, lying seaward of the line three nautical miles from the coast line of Louisiana, as said three mile line has been decreed by the Supreme Court of the United States, as determined by a Special Master appointed therein, in litigation styled **United States v. State of Louisiana et al No. 9 Original**, in 1975, all as more particularly outlined on a plat in the Office of Mineral Resources, Department of Natural Resources. All bearings, distances and coordinates are based on the Louisiana Coordinate System of 1927, (South Zone).

NOTE: The above description of the Tract nominated for lease has been provided and corrected, where required, exclusively by the nomination party. Any mineral lease selected from this Tract and awarded by the Louisiana State Mineral Board shall be without warranty of any kind,

either express, implied, or statutory, including, but not limited to, the implied warranties of merchantability and fitness for a particular purpose. Should the mineral lease awarded by the Louisiana State Mineral Board be subsequently modified, cancelled or abrogated due to the existence of conflicting leases, operating agreements, private claims or other future obligations or conditions which may affect all or any portion of the leased Tract, it shall not relieve the Lessee of the obligation to pay any bonus due thereon to the Louisiana State Mineral Board, nor shall the Louisiana State Mineral Board be obligated to refund any consideration paid by the Lessor prior to such modification, cancellation, or abrogation, including, but not limited to, bonuses, rentals and royalties.

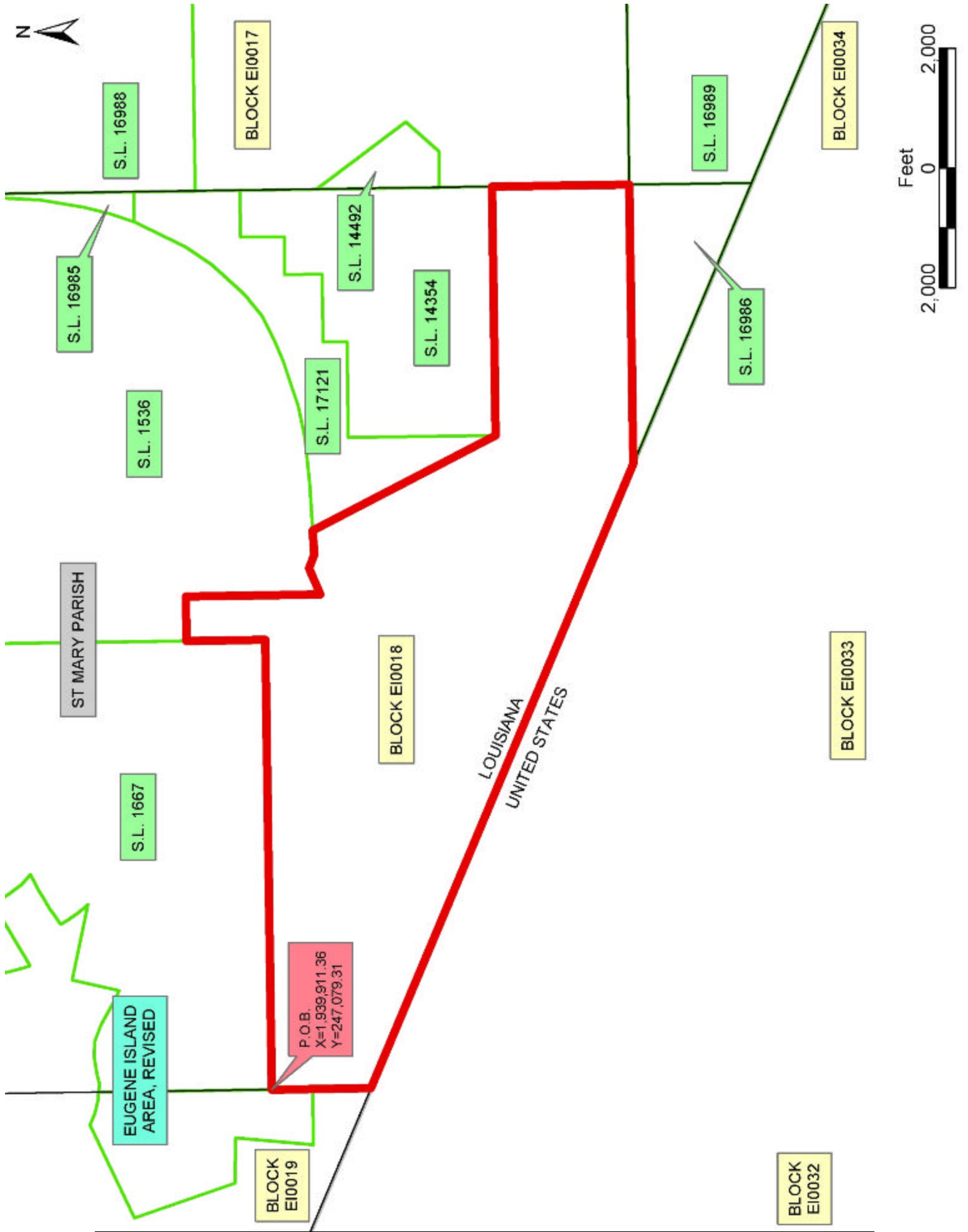
NOTE: The above described tract may be in the vicinity of existing shell reefs where drilling and dredging operations must be conducted in strict conformity with the regulations adopted by the Louisiana Department of Wildlife and Fisheries and/or the U.S. Corps of Engineers, U.S. Army.

NOTE: The State of Louisiana does hereby reserve, and this lease shall be subject to, the imprescriptible right of surface use in the nature of a servitude in favor of the Department of Natural Resources, including its Offices and Commissions, for the sole purpose of implementing, constructing, servicing and maintaining approved coastal zone management and/or restoration projects. Utilization of any and all rights derived under this lease by the mineral lessee, its agents, successors or assigns, shall not interfere with nor hinder the reasonable surface use by the Department of Natural Resources, its Offices or Commissions, as herein above reserved.

NOTE: The Department of Wildlife and Fisheries has designated certain areas in the coastal waters of the State of Louisiana as Oyster Seed Bed Areas. The exact location of those Seed Bed Areas must be obtained from the Department of Wildlife and Fisheries and any work done under a mineral lease from the State of Louisiana may necessarily be conducted in conformity with the rules and regulations promulgated by the said Department of Wildlife and Fisheries for Oyster Seed Bed Areas.

Applicant: Kevin Caliva & Associates, Ltd.

Bidder	Cash Payment	Price / Acre	Rental	Oil	Gas	Other



TRACT 35530 - Portion of Block 34, Eugene Island Area, Revised, St. Mary Parish, Louisiana

The beds and bottoms of all water bodies belonging to the State of Louisiana located in that portion of Block 34, Eugene Island Area, Revised, together with any present lands formed by accretion to the shoreline, located in St. Mary Parish, Louisiana, and not presently under mineral lease on July 9, 2003, the geographical area of which is more fully described as follows: Beginning at the Northeast corner of Block 34, Eugene Island Area, Revised, having Coordinates of X = 1,969,955.68 and Y = 240,895.42; thence South 8,610.59 feet along the East line of said Block 34 to a point having Coordinates of X = 1,969,955.68 and Y = 232,284.83; thence Northwesterly on a straight line to a point, also being the Southeast corner of State Lease No. 16989 having Coordinates of X = 1,958,433.52 and Y = 237,324.78; thence North 3,570.64 feet along the East line of said State Lease No. 16989 to its Northeast corner, also being a point on the North line of said Block 34 having Coordinates of X = 1,958,433.52 and Y = 240,895.42; thence East 11,522.16 feet along the North line of said Block 34 to the point of beginning, containing approximately **1,611.04 acres, LESS AND EXCEPT** that portion thereof, if any, lying seaward of the line three nautical miles from the coast line of Louisiana, as said three mile line has been decreed by the Supreme Court of the United States, as determined by a Special Master appointed therein, in litigation styled **United States v. State of Louisiana et al No. 9 Original**, in 1975, all as more particularly outlined on a plat in the Office of Mineral Resources, Department of Natural Resources. All bearings, distances and coordinates are based on the Louisiana Coordinate System of 1927, (South Zone).

NOTE: The above description of the Tract nominated for lease has been provided and corrected, where required, exclusively by the nomination party. Any mineral lease selected from this Tract and awarded by the Louisiana State Mineral Board shall be without warranty of any kind, either express, implied, or statutory, including, but not limited to, the implied warranties of merchantability and fitness for a particular purpose. Should the mineral lease awarded by the Louisiana State Mineral Board be subsequently modified, cancelled or abrogated due to the existence of conflicting leases, operating agreements, private claims or other future obligations or conditions which may affect all or any portion of the leased Tract, it shall not relieve the Lessee of the obligation to pay any bonus due thereon to the Louisiana State Mineral Board, nor shall the Louisiana State Mineral Board be obligated to refund any consideration paid by the Lessor prior to such modification, cancellation, or abrogation, including, but not limited to, bonuses, rentals and royalties.

NOTE: The above described tract may be in the vicinity of existing shell reefs where drilling and dredging operations must be conducted in strict conformity with the regulations adopted by the Louisiana Department of Wildlife and Fisheries and/or the U.S. Corps of Engineers, U.S. Army.

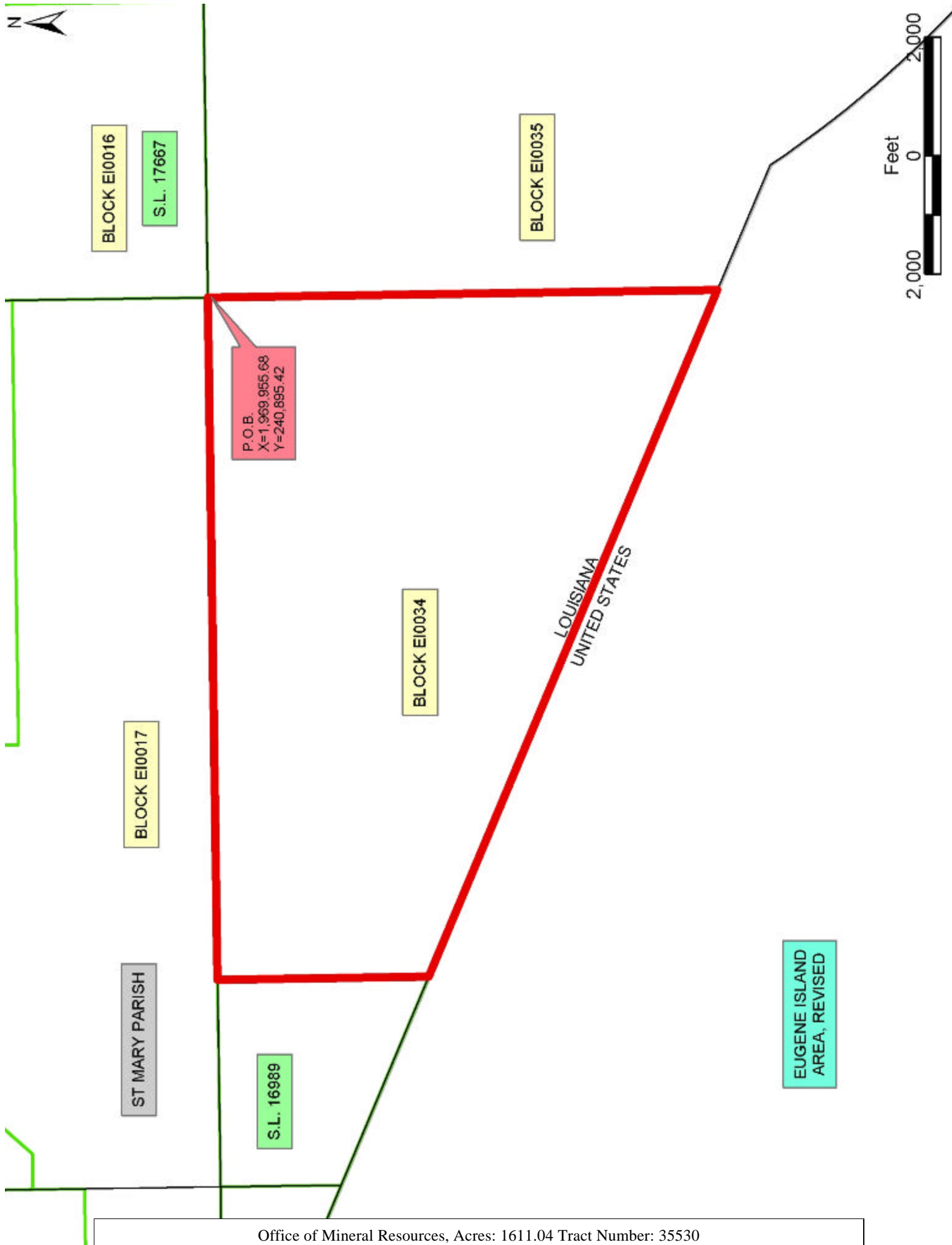
NOTE: The State of Louisiana does hereby reserve, and this lease shall be subject to, the imprescriptible right of surface use in the nature of a servitude in favor of the Department of Natural Resources, including its Offices and Commissions, for the sole purpose of implementing, constructing, servicing and maintaining approved coastal zone management and/or restoration projects. Utilization of any and all rights derived under this lease by the mineral lessee, its agents, successors or assigns, shall not interfere with nor hinder the reasonable surface use by the Department of Natural Resources, its Offices or Commissions, as herein above reserved.

NOTE: It appears, according to our records, that a portion of this Tract is located within the restrictive safety fairway area as set out by the Corps of Engineers, U.S. Army and/or the restrictive anchorage area as set out by the U.S. Coast Guard.

NOTE: The Department of Wildlife and Fisheries has designated certain areas in the coastal waters of the State of Louisiana as Oyster Seed Bed Areas. The exact location of those Seed Bed Areas must be obtained from the Department of Wildlife and Fisheries and any work done under a mineral lease from the State of Louisiana may necessarily be conducted in conformity with the rules and regulations promulgated by the said Department of Wildlife and Fisheries for Oyster Seed Bed Areas.

Applicant: Kevin Caliva & Associates, Ltd.

Bidder	Cash Payment	Price / Acre	Rental	Oil	Gas	Other



TRACT 35531 - Portion of Block 51, West Delta Area, Plaquemines Parish, Louisiana

The beds and bottoms of all water bodies belonging to the State of Louisiana located in that portion of Block 51, West Delta Area, together with any present lands formed by accretion to the shoreline, located in Plaquemines Parish, Louisiana, and not presently under mineral lease on July 9, 2003, the geographical area of which is more fully described as follows: Beginning at a point on the South line of Block 51, West Delta Area, having Coordinates of X = 2,610,457.47 and Y = 144,676.30; thence North 9,937.14 feet to a point on the North line of said Block 51, also being the South line of State Lease No. 192, as amended, having Coordinates of X = 2,610,457.47 and Y = 154,613.44; thence North 89 degrees 03 minutes 12 seconds East 4,994.97 feet on the North line of said Block 51, also being the South line of said State Lease No. 192 to a point having Coordinates of X = 2,615,451.75 and Y = 154,695.97; thence Southerly on a straight line to a point on the South line of said Block 51 having Coordinates of X = 2,615,457.47 and Y = 144,676.30; thence West 5,000.00 feet to the point of beginning, **LESS AND EXCEPT** all that portion of State Lease No. 192, as amended, that may lie within the above described tract, containing approximately **1,144.71 acres**, all as more particularly outlined on a plat on file in the Office of Mineral Resources, Department of Natural Resources. All bearings, distances and coordinates are based on Louisiana Coordinate System of 1927, (North or South Zone).

NOTE: The above description of the Tract nominated for lease has been provided and corrected, where required, exclusively by the nomination party. Any mineral lease selected from this Tract and awarded by the Louisiana State Mineral Board shall be without warranty of any kind, either express, implied, or statutory, including, but not limited to, the implied warranties of merchantability and fitness for a particular purpose. Should the mineral lease awarded by the Louisiana State Mineral Board be subsequently modified, cancelled or abrogated due to the existence of conflicting leases, operating agreements, private claims or other future obligations or conditions which may affect all or any portion of the leased Tract, it shall not relieve the Lessee of the obligation to pay any bonus due thereon to the Louisiana State Mineral Board, nor shall the Louisiana State Mineral Board be obligated to refund any consideration paid by the Lessor prior to such modification, cancellation, or abrogation, including, but not limited to, bonuses, rentals and royalties.

NOTE: The State of Louisiana does hereby reserve, and this lease shall be subject to, the imprescriptible right of surface use in the nature of a servitude in favor of the Department of Natural Resources, including its Offices and Commissions, for the sole purpose of implementing, constructing, servicing and maintaining approved coastal zone management and/or restoration projects. Utilization of any and all rights derived under this lease by the mineral lessee, its agents, successors or assigns, shall not interfere with nor hinder the reasonable surface use by the

Department of Natural Resources, its Offices or Commissions, as herein above reserved.

Applicant: Pinnacle Resources, Inc.

Bidder	Cash Payment	Price / Acre	Rental	Oil	Gas	Other



S.L. 192

BLOCK WD0051

PLAQUEMINES PARISH

WEST BAY

WEST DELTA AREA

P.O.B.
X=2,610,457.47
Y=144,676.30

BLOCK WD0055

S.L. 2549

BLOCK WD0054

2,000

Feet

0

2,000

TRACT 35532 - Portion of Blocks 81, 84, and 85, West Delta Area, Plaquemines Parish, Louisiana

The beds and bottoms of all water bodies belonging to the State of Louisiana located in that portion of Blocks 81, 84, and 85, West Delta Area, together with any present lands formed by accretion to the shoreline, located in Plaquemines Parish, Louisiana, and not presently under mineral lease on July 9, 2003, the geographical area of which is more fully described as follows: Beginning at a point having Coordinates of X = 2,595,027.93 and Y = 102,992.10, said point being the corner common to Blocks 80, 81, 84 and 85, West Delta Area; thence North 5,163.79 feet on and along the line common to said Blocks 80 and 81 to a point having Coordinates of X = 2,595,027.93 and Y = 108,155.89; thence East 9,486.07 feet to a point having Coordinates of X = 2,604,514.00 and Y = 108,155.89; thence South 5,163.79 feet to a point having Coordinates of X = 2,604,514.00 and Y = 102,992.10, said point being on the line common to said Blocks 81 and 84; thence continue South 4,734.74 feet to a point having Coordinates of X = 2,604,514.00 and Y = 98,257.36, said point being on the Northern boundary of Operating Agreement AO 0232; thence on and along the Northern and Western boundaries of said Operating Agreement AO 0232 the following courses and distances: West 7,486.07 feet to a point having Coordinates of X = 2,597,027.93 and Y = 98,257.36, said point being the Northwest corner of said Operating Agreement AO 0232; and South 521.36 feet to a point having Coordinates of X = 2,597,027.93 and Y = 97,736.00; thence West 2,000.00 feet to a point having Coordinates of X = 2,595,027.93 and Y = 97,736.00, said point being on the line common to said Blocks 84 and 85; thence continue West 5,363.93 feet to a point having Coordinates of X = 2,589,664.00 and Y = 97,736.00; thence Northeasterly 2,947.94 feet on a non tangent curve to the right having a radius of 18,240.60 feet to a point having Coordinates of X = 2,590,543.59 and Y = 100,546.30, said point being the Southwest corner of State Lease No. 17192; thence on and along the Southern and Eastern boundaries of said State Lease No. 17192 the following courses and distances: East 4,484.34 feet to a point having Coordinates of X = 2,595,027.93 and Y = 100,546.30, said point being the Southeast corner of said State Lease No. 17192, said point also being on said line common to said Blocks 84 and 85; and North 2,445.80 feet on and along said line common to said Blocks 84 and 85 to the point of beginning, containing approximately **2,499.91 acres, LESS AND EXCEPT** that portion thereof, if any, lying seaward of the line three nautical miles from the coast line of Louisiana, as said three mile line has been decreed by the Supreme Court of the United States, as determined by a Special Master appointed therein, in litigation styled **United States v. State of Louisiana et al No. 9 Original**, in 1975, all as more particularly outlined on a plat in the Office of Mineral Resources, Department of Natural Resources. All bearings, distances and coordinates are based on the Louisiana Coordinate System of 1927, (South Zone).

NOTE: The above description of the Tract nominated for lease has been provided and corrected, where required, exclusively by the nomination party. Any mineral lease selected from this Tract and awarded by the

Louisiana State Mineral Board shall be without warranty of any kind, either express, implied, or statutory, including, but not limited to, the implied warranties of merchantability and fitness for a particular purpose. Should the mineral lease awarded by the Louisiana State Mineral Board be subsequently modified, cancelled or abrogated due to the existence of conflicting leases, operating agreements, private claims or other future obligations or conditions which may affect all or any portion of the leased Tract, it shall not relieve the Lessee of the obligation to pay any bonus due thereon to the Louisiana State Mineral Board, nor shall the Louisiana State Mineral Board be obligated to refund any consideration paid by the Lessor prior to such modification, cancellation, or abrogation, including, but not limited to, bonuses, rentals and royalties.

NOTE: The State of Louisiana does hereby reserve, and this lease shall be subject to, the imprescriptible right of surface use in the nature of a servitude in favor of the Department of Natural Resources, including its Offices and Commissions, for the sole purpose of implementing, constructing, servicing and maintaining approved coastal zone management and/or restoration projects. Utilization of any and all rights derived under this lease by the mineral lessee, its agents, successors or assigns, shall not interfere with nor hinder the reasonable surface use by the Department of Natural Resources, its Offices or Commissions, as herein above reserved.

NOTE: The Department of Wildlife and Fisheries has designated certain areas in the coastal waters of the State of Louisiana as Oyster Seed Bed Areas. The exact location of those Seed Bed Areas must be obtained from the Department of Wildlife and Fisheries and any work done under a mineral lease from the State of Louisiana may necessarily be conducted in conformity with the rules and regulations promulgated by the said Department of Wildlife and Fisheries for Oyster Seed Bed Areas.

Applicant: Robert A. Schroeder, Inc.

Bidder	Cash Payment	Price / Acre	Rental	Oil	Gas	Other

