

TRACT 35513 - Portion of Block 4, West Cameron Area, Revised, Cameron Parish, Louisiana

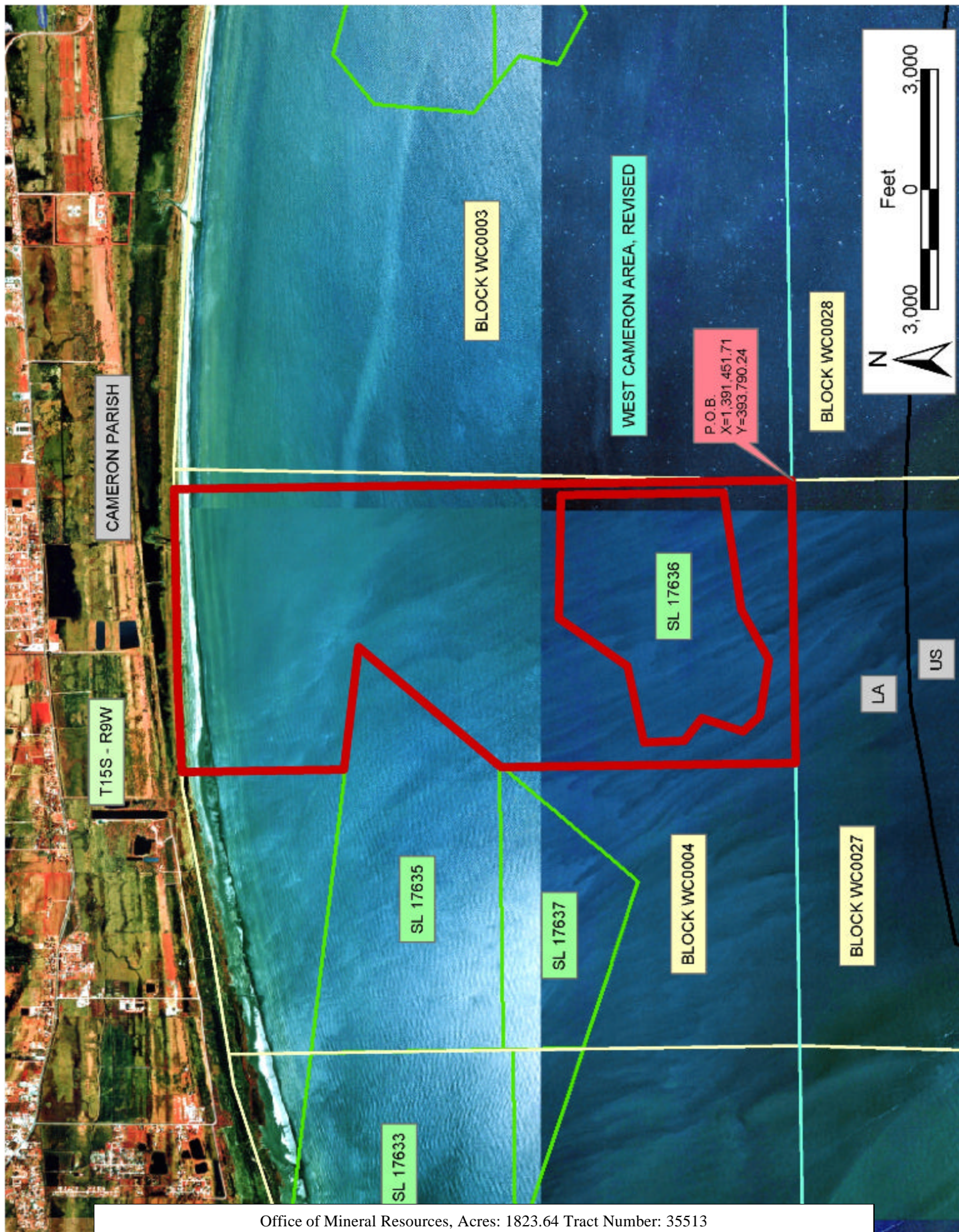
The beds and bottoms of all water bodies belonging to the State of Louisiana located in that portion of Block 4, West Cameron Area, Revised, together with any present lands formed by accretion to the shoreline, located in Cameron Parish, Louisiana, and not presently under mineral lease on July 9, 2003, the geographical area of which is more fully described as follows: Beginning at the Southeast corner of Block 4, West Cameron Area, Revised, having Coordinates of X = 1,391,451.71 and Y = 393,790.24; thence West 7,078.15 feet along the South line of said Block 4 to a point having Coordinates of X = 1,384,373.56 and Y = 393,790.24; thence North 7,364.36 feet to a point on the East line of State Lease No. 17637 having Coordinates of X = 1,384,373.56 and Y = 401,154.60; thence North 40 degrees 53 minutes 03 seconds East 89.06 feet along the East line of said State Lease No. 17637 to its Northeast corner, also being the Southeast corner of State Lease No. 17635 having Coordinates of X = 1,384,431.86 and Y = 401,221.93; thence North 40 degrees 53 minutes 03 seconds East 4,580.58 feet along the East line of said State Lease No. 17635 to its Northeast corner having Coordinates of X = 1,387,430.00 and Y = 404,685.00; thence North 82 degrees 20 minutes 36 seconds West 3,083.93 feet along the North line of said State Lease No. 17635 to a point having Coordinates of X = 1,384,373.56 and Y = 405,095.90; thence North 4,051.70 feet to a point on the North boundary of said Block 4 having Coordinates of X = 1,384,373.56 and Y = 409,147.60; thence on the North boundary of said Block 4 the following courses: Northeasterly on a straight line to a point having Coordinates of X = 1,386,636 and Y = 409,216, and Northeasterly on a straight line to its Northeast corner having Coordinates of X = 1,391,451.71 and Y = 409,240.45; thence South 15,450.21 feet along the East line of said Block 4 to the point of beginning, **LESS AND EXCEPT** all that portion of State Lease No. 17636 that lies within the above described tract, more particularly described as follows: Beginning at the Southeast corner of Block 4, West Cameron Area, Revised, having Coordinates of X = 1,391,451.71 and Y = 393,790.24; thence North 09 degrees 38 minutes 43 seconds West 1,735.09 feet to the most Easterly Southeast corner of said State Lease No. 17636; thence along the boundary of said State Lease No. 17636 the following courses: South 82 degrees 08 minutes 43 seconds West 2,962.80 feet, South 61 degrees 52 minutes 53 seconds West 1,428.61 feet, North 80 degrees 17 minutes 04 seconds West 1,413.27 feet, North 41 degrees 53 minutes 27 seconds West 584.08 feet, North 18 degrees 46 minutes 55 seconds East 1,080.85 feet, North 51 degrees 08 minutes 58 seconds West 726.77 feet, North 01 degrees 12 minutes 10 seconds West 1,000.52 feet, North 78 degrees 27 minutes 14 seconds East 1,951.49 feet, North 35 degrees 40 minutes 29 seconds East 2,088.53 feet, South 88 degrees 12 minutes 15 seconds East 3,088.52 feet and South 4,065.01 feet to the point of beginning, containing approximately **1,823.64 acres**, all as more particularly outlined on a plat on file in the Office of Mineral Resources, Department of Natural Resources. All bearings, distances and coordinates are based on Louisiana Coordinate System of 1927, (North or South Zone).

NOTE: The above description of the Tract nominated for lease has been provided and corrected, where required, exclusively by the nomination party. Any mineral lease selected from this Tract and awarded by the Louisiana State Mineral Board shall be without warranty of any kind, either express, implied, or statutory, including, but not limited to, the implied warranties of merchantability and fitness for a particular purpose. Should the mineral lease awarded by the Louisiana State Mineral Board be subsequently modified, cancelled or abrogated due to the existence of conflicting leases, operating agreements, private claims or other future obligations or conditions which may affect all or any portion of the leased Tract, it shall not relieve the Lessee of the obligation to pay any bonus due thereon to the Louisiana State Mineral Board, nor shall the Louisiana State Mineral Board be obligated to refund any consideration paid by the Lessor prior to such modification, cancellation, or abrogation, including, but not limited to, bonuses, rentals and royalties.

NOTE: The State of Louisiana does hereby reserve, and this lease shall be subject to, the imprescriptible right of surface use in the nature of a servitude in favor of the Department of Natural Resources, including its Offices and Commissions, for the sole purpose of implementing, constructing, servicing and maintaining approved coastal zone management and/or restoration projects. Utilization of any and all rights derived under this lease by the mineral lessee, its agents, successors or assigns, shall not interfere with nor hinder the reasonable surface use by the Department of Natural Resources, its Offices or Commissions, as herein above reserved.

Applicant: Dara Doty

Bidder	Cash Payment	Price / Acre	Rental	Oil	Gas	Other



TRACT 35514 - Portion of Blocks 3, and 4, West Cameron Area, Revised, Cameron Parish, Louisiana

The beds and bottoms of all water bodies belonging to the State of Louisiana located in that portion of Blocks 3, and 4, West Cameron Area, Revised, together with any present lands formed by accretion to the shoreline, located in Cameron Parish, Louisiana, and not presently under mineral lease on July 9, 2003, the geographical area of which is more fully described as follows: Beginning at a point on the East line of Block 3, West Cameron Area, Revised, having Coordinates of X = 1,405,806.20 and Y = 401,082.74; thence West 598.40 feet to the Southeast corner of State Lease No. 17638, also being the Northeast corner of State Lease No. 17639, having Coordinates of X = 1,405,207.80 and Y = 401,082.74; thence along the boundary of said State Lease No. 17638 the following courses: North 25 degrees 17 minutes 58 seconds East 381.89 feet, North 01 degrees 27 minutes 47 seconds West 1,292.42 feet, North 17 degrees 31 minutes 50 seconds West 1,742.95 feet, North 73 degrees 34 minutes 27 seconds West 2,669.97 feet, South 50 degrees 26 minutes 46 seconds West 1,631.59 feet, South 05 degrees 31 minutes 13 seconds West 2,484.52 feet and South 50 degrees 27 minutes 04 seconds East 851.62 feet to the Southwest corner of said State Lease No. 17638, also being the Northwest corner of State Lease No. 17639, having Coordinates of X = 1,401,411.67 and Y = 401,082.74; thence West 9,959.96 feet to a point on the West line of said Block 3 having Coordinates of X = 1,391,451.71 and Y = 401,082.74; thence North 8,157.71 feet along the West line of said Block 3 to its Northwest corner having Coordinates of X = 1,391,451.71 and Y = 409,240.45; thence on the North boundary of said Block 3 the following courses: Northeasterly on a straight line to a point having Coordinates of X = 1,391,954 and Y = 409,243, Southeasterly on a straight line to a point having Coordinates of X = 1,392,000 and Y = 409,180, Southeasterly on a straight line to a point having Coordinates of X = 1,397,220 and Y = 408,870, Southeasterly on a straight line to a point having Coordinates of X = 1,402,525 and Y = 408,365, and Southeasterly on a straight line to its Northeast corner having Coordinates of X = 1,405,806.20 and Y = 407,818.13; thence South 6,735.39 feet along the East line of said Block 3 to the point of beginning, containing approximately **2,146.23 acres**, all as more particularly outlined on a plat on file in the Office of Mineral Resources, Department of Natural Resources. All bearings, distances and coordinates are based on Louisiana Coordinate System of 1927, (North or South Zone).

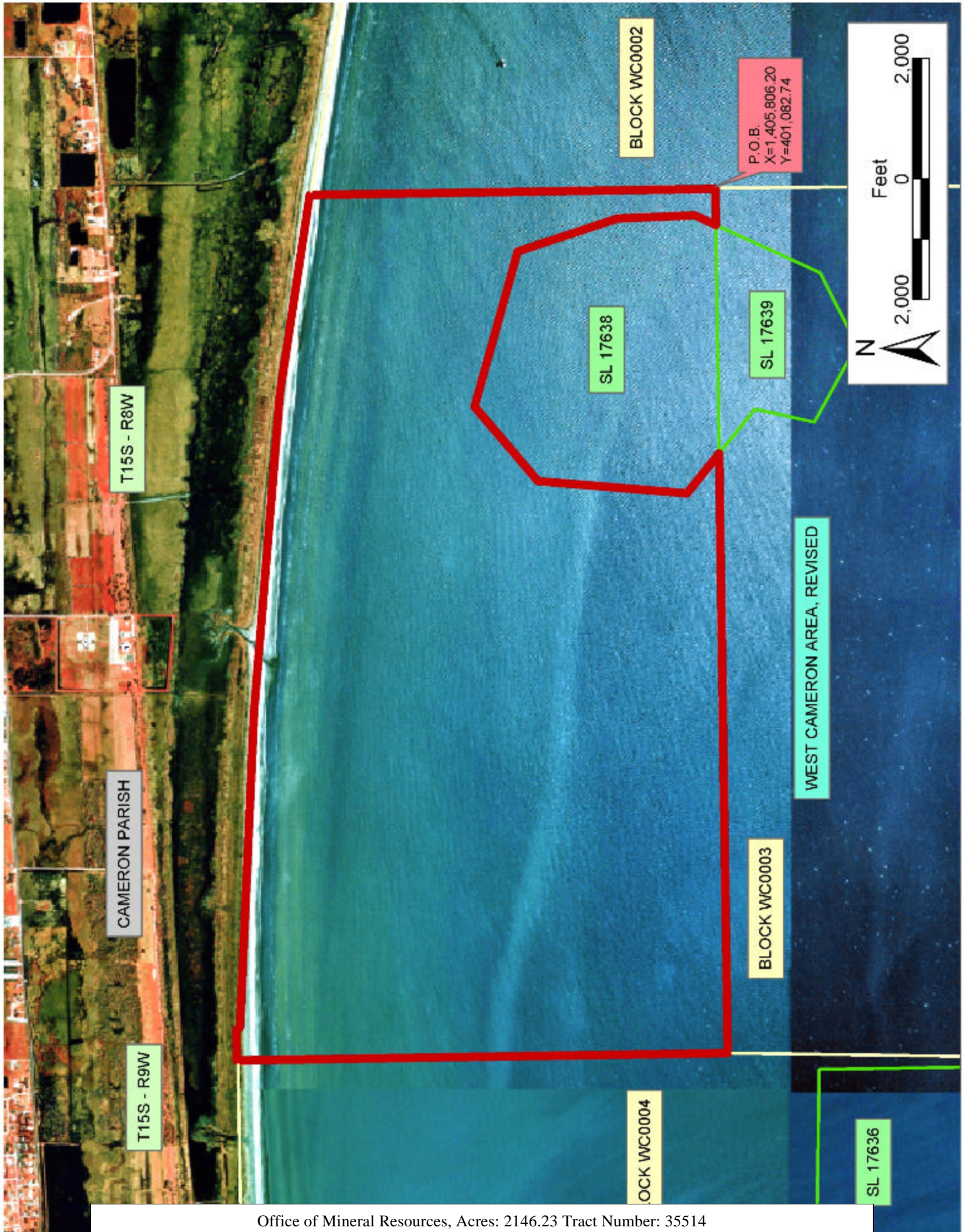
NOTE: The above description of the Tract nominated for lease has been provided and corrected, where required, exclusively by the nomination party. Any mineral lease selected from this Tract and awarded by the Louisiana State Mineral Board shall be without warranty of any kind, either express, implied, or statutory, including, but not limited to, the implied warranties of merchantability and fitness for a particular purpose. Should the mineral lease awarded by the Louisiana State Mineral Board be subsequently modified, cancelled or abrogated due to the existence of conflicting leases, operating agreements, private claims or

other future obligations or conditions which may affect all or any portion of the leased Tract, it shall not relieve the Lessee of the obligation to pay any bonus due thereon to the Louisiana State Mineral Board, nor shall the Louisiana State Mineral Board be obligated to refund any consideration paid by the Lessor prior to such modification, cancellation, or abrogation, including, but not limited to, bonuses, rentals and royalties.

NOTE: The State of Louisiana does hereby reserve, and this lease shall be subject to, the imprescriptible right of surface use in the nature of a servitude in favor of the Department of Natural Resources, including its Offices and Commissions, for the sole purpose of implementing, constructing, servicing and maintaining approved coastal zone management and/or restoration projects. Utilization of any and all rights derived under this lease by the mineral lessee, its agents, successors or assigns, shall not interfere with nor hinder the reasonable surface use by the Department of Natural Resources, its Offices or Commissions, as herein above reserved.

Applicant: Dara Doty

Bidder	Cash Payment	Price / Acre	Rental	Oil	Gas	Other



TRACT 35515 - Portion of Block 2, West Cameron Area, Revised, Cameron Parish, Louisiana

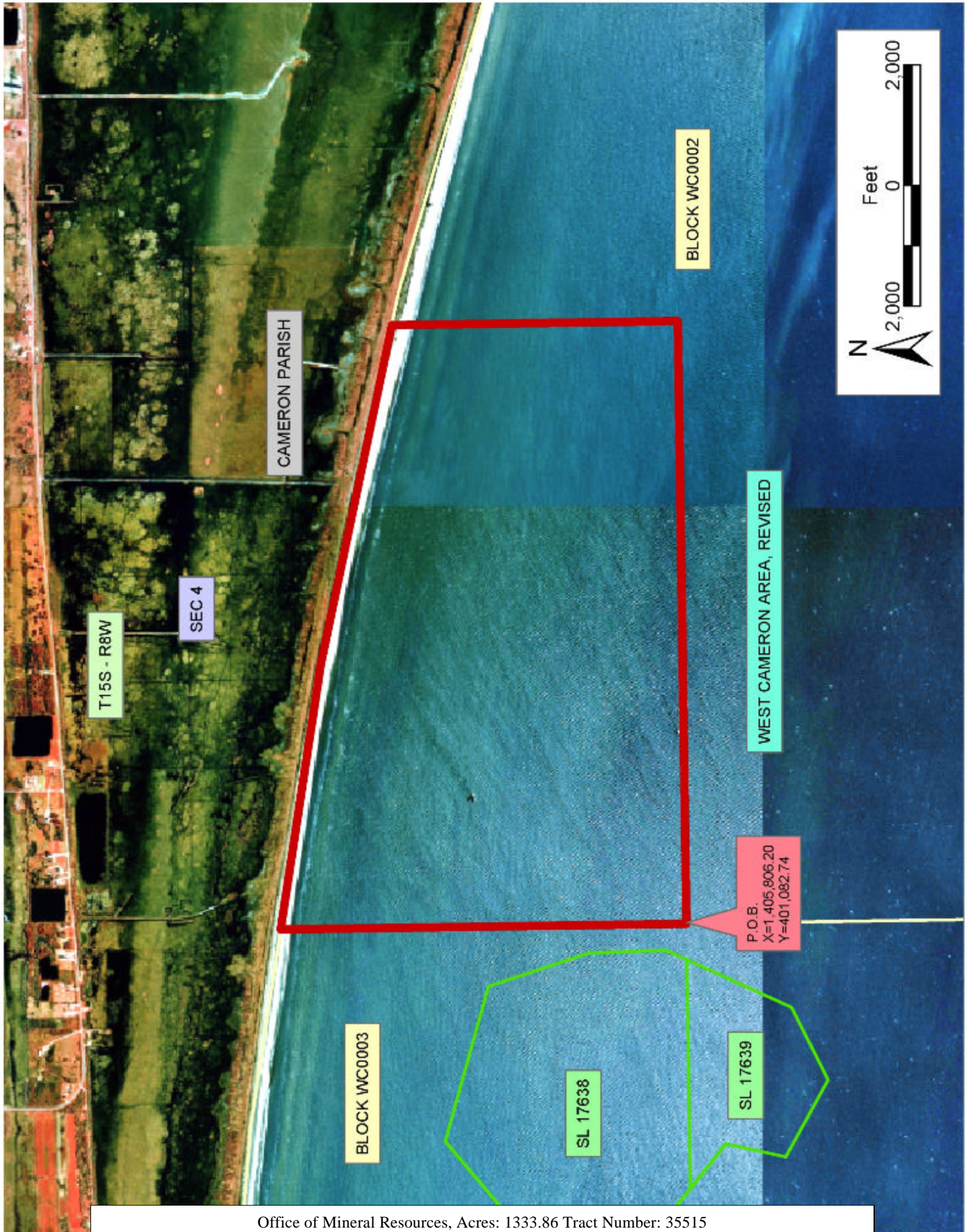
The beds and bottoms of all water bodies belonging to the State of Louisiana located in that portion of Block 2, West Cameron Area, Revised, together with any present lands formed by accretion to the shoreline, located in Cameron Parish, Louisiana, and not presently under mineral lease on July 9, 2003, the geographical area of which is more fully described as follows: Beginning at a point on the West line of Block 2, West Cameron Area, Revised, having Coordinates of X = 1,405,806.20 and Y = 401,082.74; thence North 6,735.39 feet along the West line of said Block 2 to a point having Coordinates of X = 1,405,806.20 and Y = 407,818.13; thence Southeasterly on a straight line to a point having Coordinates of X = 1,410,175 and Y = 407,090; thence Southeasterly on a straight line to a point having Coordinates of X = 1,415,806.20 and Y = 405,825.48; thence South 4,742.74 feet to a point having Coordinates of X = 1,415,806.20 and Y = 401,082.74; thence West 10,000.00 feet to the point of beginning, containing approximately **1,333.86 acres**, all as more particularly outlined on a plat on file in the Office of Mineral Resources, Department of Natural Resources. All bearings, distances and coordinates are based on Louisiana Coordinate System of 1927, (North or South Zone).

NOTE: The above description of the Tract nominated for lease has been provided and corrected, where required, exclusively by the nomination party. Any mineral lease selected from this Tract and awarded by the Louisiana State Mineral Board shall be without warranty of any kind, either express, implied, or statutory, including, but not limited to, the implied warranties of merchantability and fitness for a particular purpose. Should the mineral lease awarded by the Louisiana State Mineral Board be subsequently modified, cancelled or abrogated due to the existence of conflicting leases, operating agreements, private claims or other future obligations or conditions which may affect all or any portion of the leased Tract, it shall not relieve the Lessee of the obligation to pay any bonus due thereon to the Louisiana State Mineral Board, nor shall the Louisiana State Mineral Board be obligated to refund any consideration paid by the Lessor prior to such modification, cancellation, or abrogation, including, but not limited to, bonuses, rentals and royalties.

NOTE: The State of Louisiana does hereby reserve, and this lease shall be subject to, the imprescriptible right of surface use in the nature of a servitude in favor of the Department of Natural Resources, including its Offices and Commissions, for the sole purpose of implementing, constructing, servicing and maintaining approved coastal zone management and/or restoration projects. Utilization of any and all rights derived under this lease by the mineral lessee, its agents, successors or assigns, shall not interfere with nor hinder the reasonable surface use by the Department of Natural Resources, its Offices or Commissions, as herein above reserved.

Applicant: Dara Doty

Bidder	Cash Payment	Price / Acre	Rental	Oil	Gas	Other



TRACT 35516 - Portion of Block 3, West Cameron Area, Revised, Cameron Parish, Louisiana

The beds and bottoms of all water bodies belonging to the State of Louisiana located in that portion of Block 3, West Cameron Area, Revised, together with any present lands formed by accretion to the shoreline, located in Cameron Parish, Louisiana, and not presently under mineral lease on July 9, 2003, the geographical area of which is more fully described as follows: Beginning at a point on the East line of Block 3, West Cameron Area, Revised, having Coordinates of X = 1,405,806.20 and Y = 401,082.74; thence South 7,292.50 feet along the East line of said Block 3 to its Southeast corner having Coordinates of X = 1,405,806.20 and Y = 393,790.24; thence West 14,354.49 feet along the South line of said Block 3 to its Southwest corner having Coordinates of X = 1,391,451.71 and Y = 393,790.24; thence North 7,292.50 feet along the West line of said Block 3 to a point having Coordinates of X = 1,391,451.71 and Y = 401,082.74; thence East 9,959.96 feet to the most Northerly Northwest corner of State Lease No. 17639 having Coordinates of X = 1,401,411.67 and Y = 401,082.74; thence along the boundary of said State Lease No. 17639 the following courses: South 50 degrees 27 minutes 03 seconds East 949.75 feet, South 13 degrees 11 minutes 54 seconds West 1,011.72 feet, South 60 degrees 20 minutes 34 seconds East 1,459.15 feet, North 64 degrees 07 minutes 11 seconds East 1,347.10 feet and North 25 degrees 17 minutes 59 seconds East 1,906.61 feet to the most Northerly Northeast corner of said State Lease No. 17639 having Coordinates of X = 1,405,207.80 and Y = 401,082.74; thence East 598.40 feet to the point of beginning, containing approximately **2,274.81 acres**, all as more particularly outlined on a plat on file in the Office of Mineral Resources, Department of Natural Resources. All bearings, distances and coordinates are based on Louisiana Coordinate System of 1927, (North or South Zone).

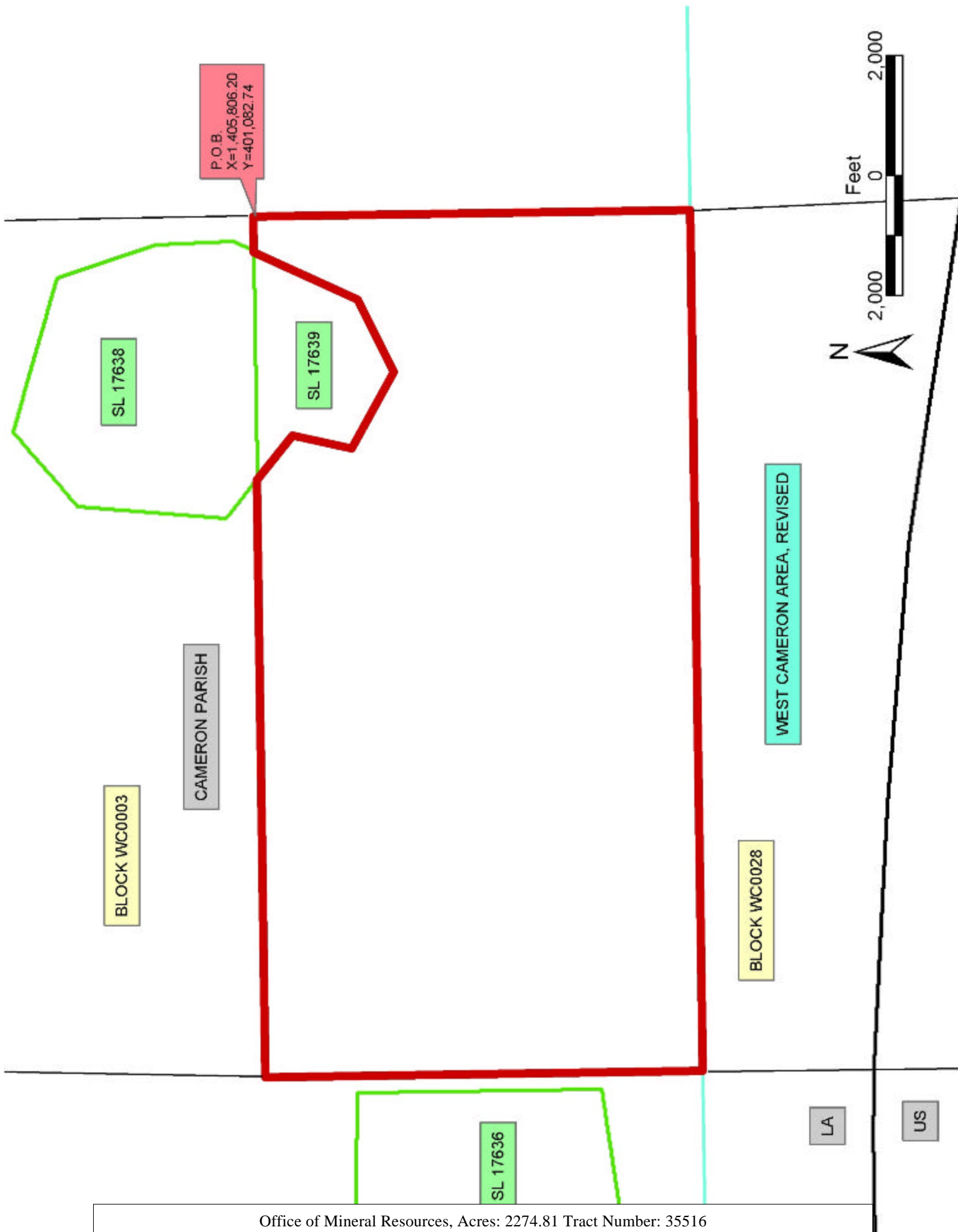
NOTE: The above description of the Tract nominated for lease has been provided and corrected, where required, exclusively by the nomination party. Any mineral lease selected from this Tract and awarded by the Louisiana State Mineral Board shall be without warranty of any kind, either express, implied, or statutory, including, but not limited to, the implied warranties of merchantability and fitness for a particular purpose. Should the mineral lease awarded by the Louisiana State Mineral Board be subsequently modified, cancelled or abrogated due to the existence of conflicting leases, operating agreements, private claims or other future obligations or conditions which may affect all or any portion of the leased Tract, it shall not relieve the Lessee of the obligation to pay any bonus due thereon to the Louisiana State Mineral Board, nor shall the Louisiana State Mineral Board be obligated to refund any consideration paid by the Lessor prior to such modification, cancellation, or abrogation, including, but not limited to, bonuses, rentals and royalties.

NOTE: The State of Louisiana does hereby reserve, and this lease shall be subject to, the imprescriptible right of surface use in the nature of a servitude in favor of the Department of Natural Resources, including its

Offices and Commissions, for the sole purpose of implementing, constructing, servicing and maintaining approved coastal zone management and/or restoration projects. Utilization of any and all rights derived under this lease by the mineral lessee, its agents, successors or assigns, shall not interfere with nor hinder the reasonable surface use by the Department of Natural Resources, its Offices or Commissions, as herein above reserved.

Applicant: Dara Doty

Bidder	Cash Payment	Price / Acre	Rental	Oil	Gas	Other



TRACT 35517 - Portion of Block 2, West Cameron Area, Revised, Cameron Parish, Louisiana

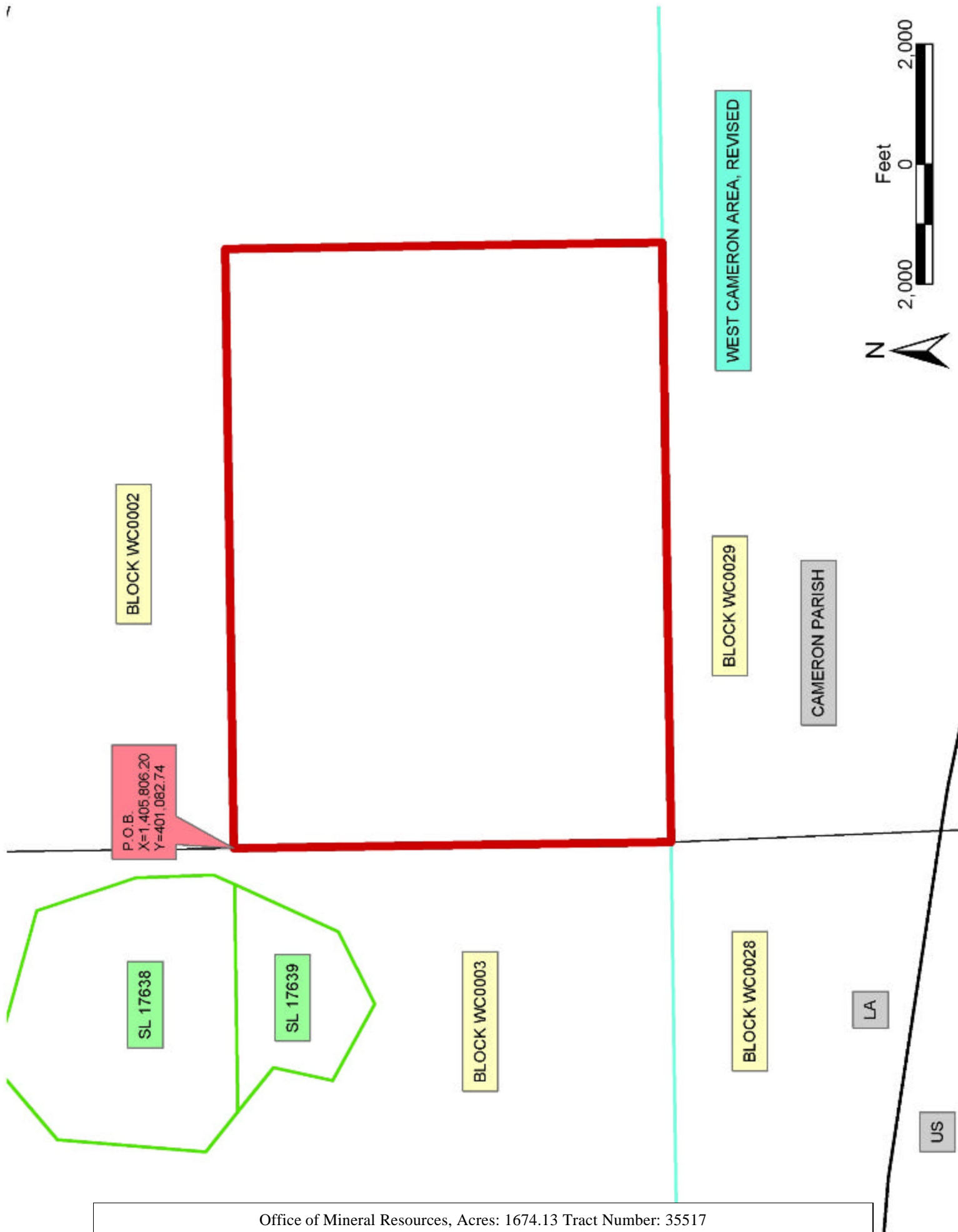
The beds and bottoms of all water bodies belonging to the State of Louisiana located in that portion of Block 2, West Cameron Area, Revised, together with any present lands formed by accretion to the shoreline, located in Cameron Parish, Louisiana, and not presently under mineral lease on July 9, 2003, the geographical area of which is more fully described as follows: Beginning at a point on the West line of Block 2, West Cameron Area, Revised, having Coordinates of X = 1,405,806.20 and Y = 401,082.74; thence East 10,000.00 feet to a point having Coordinates of X = 1,415,806.20 and Y = 401,082.74; thence South 7,292.50 feet to a point on the South line of said Block 2 having Coordinates of X = 1,415,806.20 and Y = 393,790.24; thence West 10,000.00 feet along the South line of said Block 2 to its Southwest corner having Coordinates of X = 1,405,806.20 and Y = 393,790.24; thence North 7,292.50 feet along the West line of said Block 2 to the point of beginning, containing approximately **1,674.13 acres**, all as more particularly outlined on a plat on file in the Office of Mineral Resources, Department of Natural Resources. All bearings, distances and coordinates are based on Louisiana Coordinate System of 1927, (North or South Zone).

NOTE: The above description of the Tract nominated for lease has been provided and corrected, where required, exclusively by the nomination party. Any mineral lease selected from this Tract and awarded by the Louisiana State Mineral Board shall be without warranty of any kind, either express, implied, or statutory, including, but not limited to, the implied warranties of merchantability and fitness for a particular purpose. Should the mineral lease awarded by the Louisiana State Mineral Board be subsequently modified, cancelled or abrogated due to the existence of conflicting leases, operating agreements, private claims or other future obligations or conditions which may affect all or any portion of the leased Tract, it shall not relieve the Lessee of the obligation to pay any bonus due thereon to the Louisiana State Mineral Board, nor shall the Louisiana State Mineral Board be obligated to refund any consideration paid by the Lessor prior to such modification, cancellation, or abrogation, including, but not limited to, bonuses, rentals and royalties.

NOTE: The State of Louisiana does hereby reserve, and this lease shall be subject to, the imprescriptible right of surface use in the nature of a servitude in favor of the Department of Natural Resources, including its Offices and Commissions, for the sole purpose of implementing, constructing, servicing and maintaining approved coastal zone management and/or restoration projects. Utilization of any and all rights derived under this lease by the mineral lessee, its agents, successors or assigns, shall not interfere with nor hinder the reasonable surface use by the Department of Natural Resources, its Offices or Commissions, as herein above reserved.

Applicant: Dara Doty

Bidder	Cash Payment	Price / Acre	Rental	Oil	Gas	Other



TRACT 35518 - Portion of Blocks 28, and 29, West Cameron Area, Revised, Cameron Parish, Louisiana

The beds and bottoms of all water bodies belonging to the State of Louisiana located in that portion of Blocks 28, and 29, West Cameron Area, Revised, together with any present lands formed by accretion to the shoreline, located in Cameron Parish, Louisiana, and not presently under mineral lease on July 9, 2003, the geographical area of which is more fully described as follows: Beginning at the Northwest corner of Block 28, West Cameron Area, Revised, having Coordinates of X = 1,391,451.71 and Y = 393,790.24; thence East 14,758.05 feet along the North line of said Block 28 to its Northeast corner having Coordinates of X = 1,406,209.76 and Y = 393,790.24; thence South 4,531.71 feet along the East line of said Block 28 to a point having Coordinates of X = 1,406,209.76 and Y = 389,258.53; thence Northwesterly on a straight line to a point having Coordinates of X = 1,400,158 and Y = 390,267; thence Northwesterly on a straight line to a point having Coordinates of X = 1,395,815 and Y = 390,681; thence Northwesterly on a straight line to a point having Coordinates of X = 1,391,451.71 and Y = 390,939.45; thence North 2,850.79 feet along the West line of said Block 28 to the point of beginning, containing approximately **1,188.67 acres, LESS AND EXCEPT** that portion thereof, if any, lying seaward of the line three nautical miles from the coast line of Louisiana, as said three mile line has been decreed by the Supreme Court of the United States, as determined by a Special Master appointed therein, in litigation styled **United States v. State of Louisiana et al No. 9 Original**, in 1975, all as more particularly outlined on a plat in the Office of Mineral Resources, Department of Natural Resources. All bearings, distances and coordinates are based on the Louisiana Coordinate System of 1927, (South Zone).

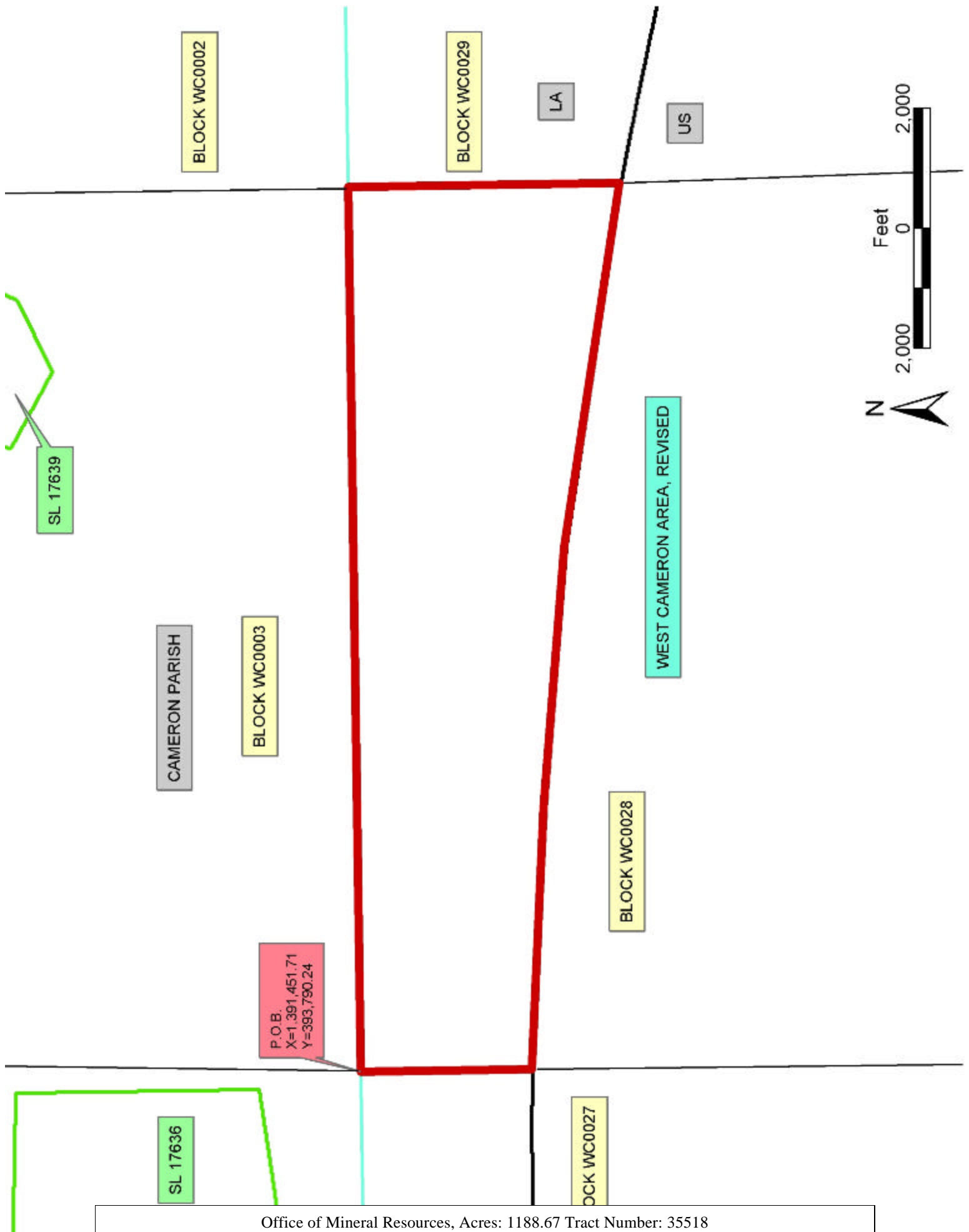
NOTE: The above description of the Tract nominated for lease has been provided and corrected, where required, exclusively by the nomination party. Any mineral lease selected from this Tract and awarded by the Louisiana State Mineral Board shall be without warranty of any kind, either express, implied, or statutory, including, but not limited to, the implied warranties of merchantability and fitness for a particular purpose. Should the mineral lease awarded by the Louisiana State Mineral Board be subsequently modified, cancelled or abrogated due to the existence of conflicting leases, operating agreements, private claims or other future obligations or conditions which may affect all or any portion of the leased Tract, it shall not relieve the Lessee of the obligation to pay any bonus due thereon to the Louisiana State Mineral Board, nor shall the Louisiana State Mineral Board be obligated to refund any consideration paid by the Lessor prior to such modification, cancellation, or abrogation, including, but not limited to, bonuses, rentals and royalties.

NOTE: The State of Louisiana does hereby reserve, and this lease shall be subject to, the imprescriptible right of surface use in the nature of a servitude in favor of the Department of Natural Resources, including its Offices and Commissions, for the sole purpose of implementing,

constructing, servicing and maintaining approved coastal zone management and/or restoration projects. Utilization of any and all rights derived under this lease by the mineral lessee, its agents, successors or assigns, shall not interfere with nor hinder the reasonable surface use by the Department of Natural Resources, its Offices or Commissions, as herein above reserved.

Applicant: Dara Doty

Bidder	Cash Payment	Price / Acre	Rental	Oil	Gas	Other



TRACT 35519 - Portion of Block 2, Vermilion Block Area, Vermilion Parish, Louisiana

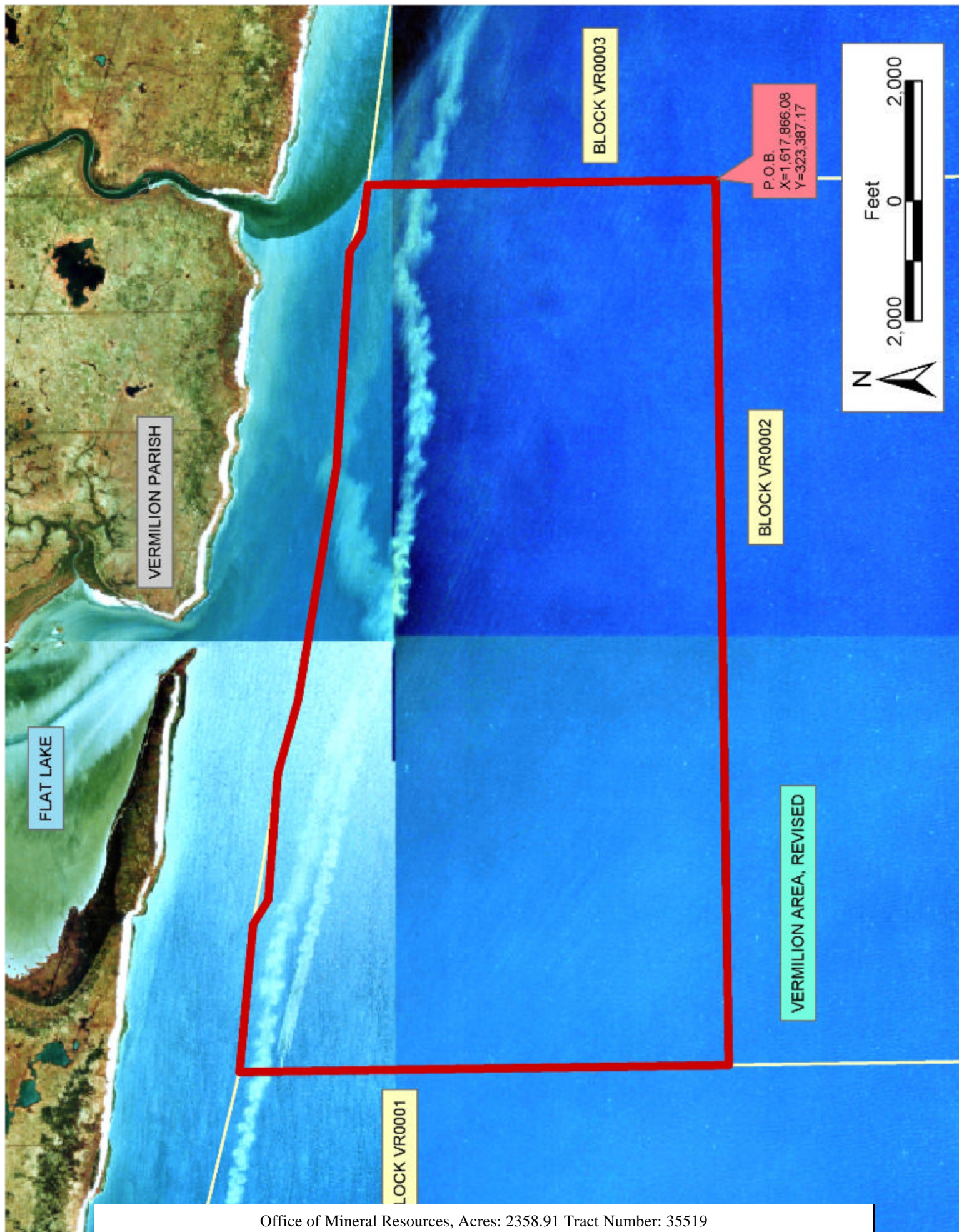
The beds and bottoms of all water bodies belonging to the State of Louisiana located in that portion of Block 2, Vermilion Block Area, together with any present lands formed by accretion to the shoreline, located in Vermilion Parish, Louisiana, and not presently under mineral lease on July 9, 2003, the geographical area of which is more fully described as follows: Beginning at a point on the East line of Block 2, Vermilion Area, Revised, having Coordinates of X = 1,617,866.08 and Y = 323,387.17; thence West 14,758.05 feet to a point on the West line of said Block 2 having Coordinates of X = 1,603,108.03 and Y = 323,387.17; thence North 8,160.90 feet along the West line of said Block 2 to its Northwest corner having Coordinates of X = 1,603,108.03 and Y = 331,548.07; thence along the North boundary of said Block 2 the following courses: Southeasterly on a straight line to a point having Coordinates of X = 1,603,140 and Y = 331,540, Southeasterly on a straight line to a point having Coordinates of X = 1,605,565 and Y = 331,280, Southeasterly on a straight line to a point having Coordinates of X = 1,605,965 and Y = 331,030, Southeasterly on a straight line to a point having Coordinates of X = 1,608,080 and Y = 330,835, Southeasterly on a straight line to a point having Coordinates of X = 1,609,300 and Y = 330,480, Southeasterly on a straight line to a point having Coordinates of X = 1,613,190 and Y = 329,780, Southeasterly on a straight line to a point having Coordinates of X = 1,616,760 and Y = 329,510, Southeasterly on a straight line to a point having Coordinates of X = 1,617,090 and Y = 329,300, and Southeasterly on a straight line to its Northeast corner having Coordinates X = 1,617,866.08 and Y = 329,191.52; thence South 5,804.35 feet along the East line of said Block 2 to the point of beginning, containing approximately **2,358.91 acres**, all as more particularly outlined on a plat on file in the Office of Mineral Resources, Department of Natural Resources. All bearings, distances and coordinates are based on Louisiana Coordinate System of 1927, (North or South Zone).

NOTE: The above description of the Tract nominated for lease has been provided and corrected, where required, exclusively by the nomination party. Any mineral lease selected from this Tract and awarded by the Louisiana State Mineral Board shall be without warranty of any kind, either express, implied, or statutory, including, but not limited to, the implied warranties of merchantability and fitness for a particular purpose. Should the mineral lease awarded by the Louisiana State Mineral Board be subsequently modified, cancelled or abrogated due to the existence of conflicting leases, operating agreements, private claims or other future obligations or conditions which may affect all or any portion of the leased Tract, it shall not relieve the Lessee of the obligation to pay any bonus due thereon to the Louisiana State Mineral Board, nor shall the Louisiana State Mineral Board be obligated to refund any consideration paid by the Lessor prior to such modification, cancellation, or abrogation, including, but not limited to, bonuses, rentals and royalties.

NOTE: The State of Louisiana does hereby reserve, and this lease shall be subject to, the imprescriptible right of surface use in the nature of a servitude in favor of the Department of Natural Resources, including its Offices and Commissions, for the sole purpose of implementing, constructing, servicing and maintaining approved coastal zone management and/or restoration projects. Utilization of any and all rights derived under this lease by the mineral lessee, its agents, successors or assigns, shall not interfere with nor hinder the reasonable surface use by the Department of Natural Resources, its Offices or Commissions, as herein above reserved.

Applicant: Dara Doty

Bidder	Cash Payment	Price / Acre	Rental	Oil	Gas	Other



TRACT 35520 - Portion of Block 3, Vermilion Block Area, Vermilion Parish, Louisiana

The beds and bottoms of all water bodies belonging to the State of Louisiana located in that portion of Block 3, Vermilion Block Area, together with any present lands formed by accretion to the shoreline, located in Vermilion Parish, Louisiana, and not presently under mineral lease on July 9, 2003, the geographical area of which is more fully described as follows: Beginning at a point on the West line of Block 3, Vermilion Area, Revised, having Coordinates of X = 1,617,866.08 and Y = 323,387.17; thence North 5,804.35 feet along the West line of said Block 3 to its Northwest corner having Coordinates of X = 1,617,866.08 and Y = 329,191.52; thence on the North boundary of said Block 3 the following courses: Southeasterly on a straight line to a point having Coordinates of X = 1,622,420 and Y = 328,555, Southeasterly on a straight line to a point having Coordinates of X = 1,629,147 and Y = 327,939, and Southeasterly on a straight line to its Northeast corner having Coordinates of X = 1,632,624.12 and Y = 327,483.59; thence South 4,096.42 feet along the East line of said Block 3 to a point having Coordinates of X = 1,632,624.12 and Y = 323,387.17; thence West 14,758.04 feet to the point of beginning, containing approximately **1,669.21 acres**, all as more particularly outlined on a plat on file in the Office of Mineral Resources, Department of Natural Resources. All bearings, distances and coordinates are based on Louisiana Coordinate System of 1927, (North or South Zone).

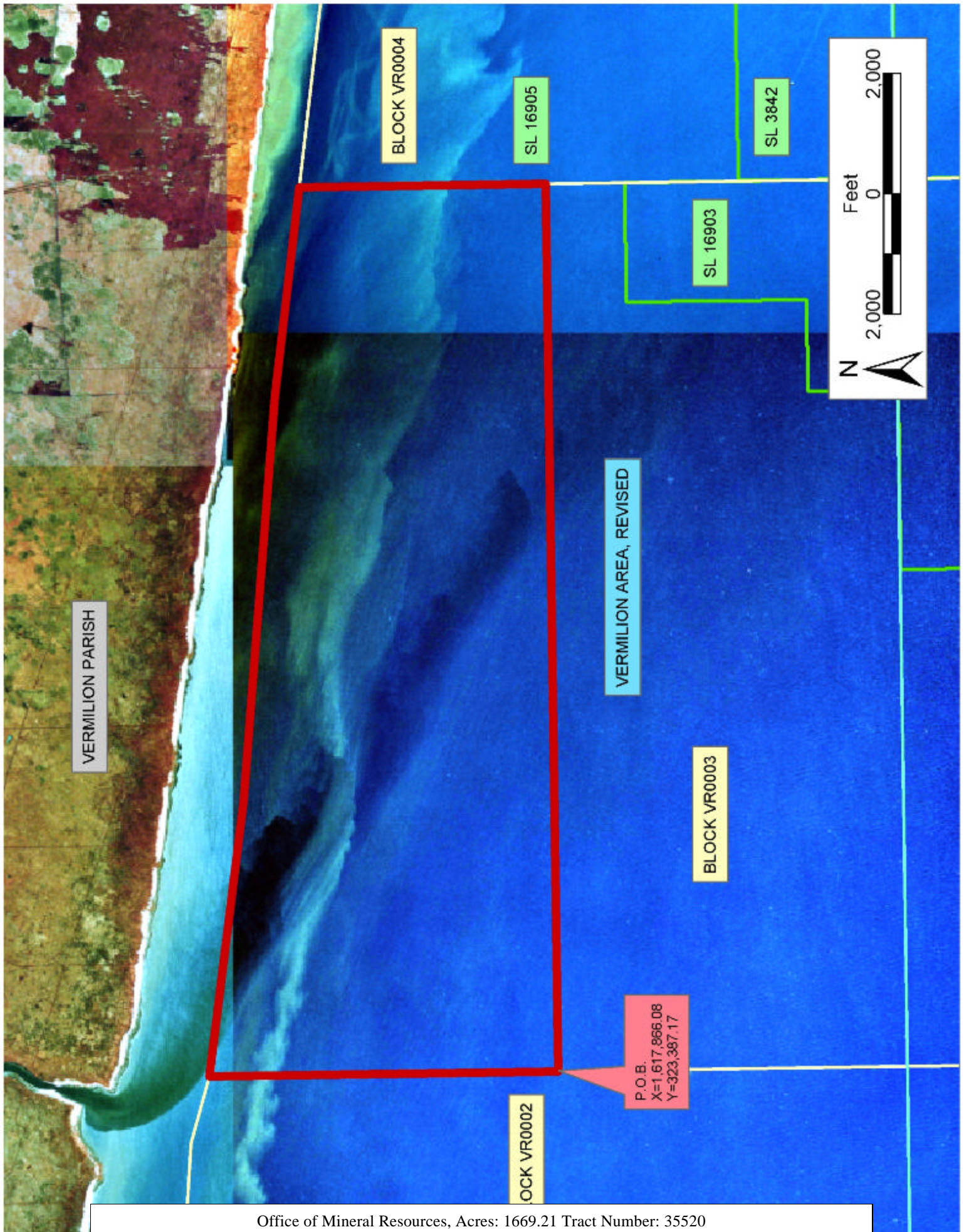
NOTE: The above description of the Tract nominated for lease has been provided and corrected, where required, exclusively by the nomination party. Any mineral lease selected from this Tract and awarded by the Louisiana State Mineral Board shall be without warranty of any kind, either express, implied, or statutory, including, but not limited to, the implied warranties of merchantability and fitness for a particular purpose. Should the mineral lease awarded by the Louisiana State Mineral Board be subsequently modified, cancelled or abrogated due to the existence of conflicting leases, operating agreements, private claims or other future obligations or conditions which may affect all or any portion of the leased Tract, it shall not relieve the Lessee of the obligation to pay any bonus due thereon to the Louisiana State Mineral Board, nor shall the Louisiana State Mineral Board be obligated to refund any consideration paid by the Lessor prior to such modification, cancellation, or abrogation, including, but not limited to, bonuses, rentals and royalties.

NOTE: The State of Louisiana does hereby reserve, and this lease shall be subject to, the imprescriptible right of surface use in the nature of a servitude in favor of the Department of Natural Resources, including its Offices and Commissions, for the sole purpose of implementing, constructing, servicing and maintaining approved coastal zone management and/or restoration projects. Utilization of any and all rights derived under this lease by the mineral lessee, its agents, successors or assigns, shall not interfere with nor hinder the reasonable surface use by the

Department of Natural Resources, its Offices or Commissions, as herein above reserved.

Applicant: Dara Doty

Bidder	Cash Payment	Price / Acre	Rental	Oil	Gas	Other



TRACT 35521 - Portion of Block 2, Vermilion Block Area, Vermilion Parish, Louisiana

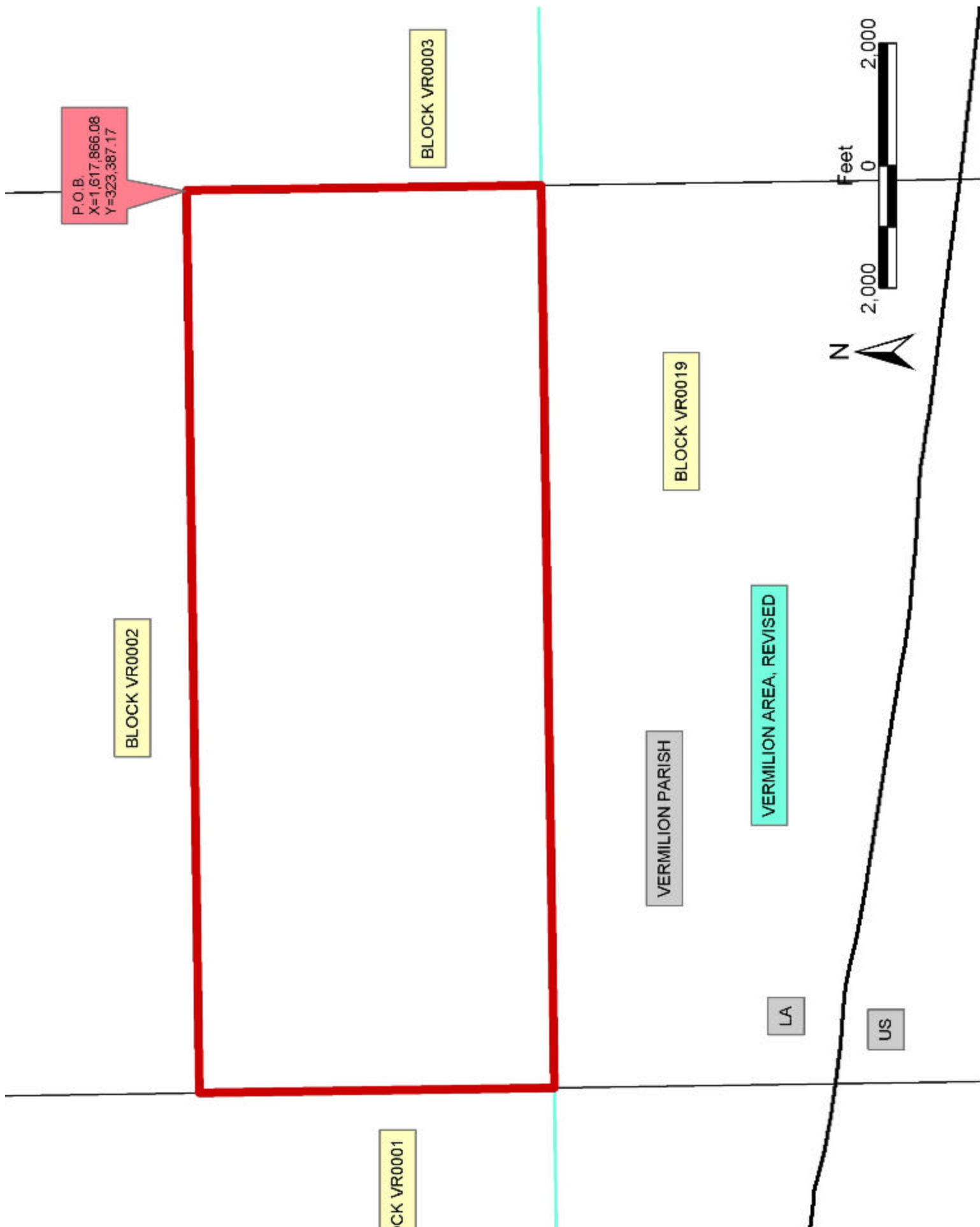
The beds and bottoms of all water bodies belonging to the State of Louisiana located in that portion of Block 2, Vermilion Block Area, together with any present lands formed by accretion to the shoreline, located in Vermilion Parish, Louisiana, and not presently under mineral lease on July 9, 2003, the geographical area of which is more fully described as follows: Beginning at a point on the East line of Block 2, Vermilion Area, Revised, having Coordinates of X = 1,617,866.08 and Y = 323,387.17; thence South 5,804.35 feet along the East line of said Block 2 to its Southeast corner having Coordinates of X = 1,617,866.08 and Y = 317,582.82; thence West 14,758.05 feet along the South line of said Block 2 to its Southwest corner having Coordinates of X = 1,603,108.03 and Y = 317,582.82; thence North 5,804.35 feet along the West line of said Block 2 to a point having Coordinates of X = 1,603,108.03 and Y = 323,387.17; thence East 14,758.05 feet to the point of beginning, containing approximately **1,966.50 acres**, all as more particularly outlined on a plat on file in the Office of Mineral Resources, Department of Natural Resources. All bearings, distances and coordinates are based on Louisiana Coordinate System of 1927, (North or South Zone).

NOTE: The above description of the Tract nominated for lease has been provided and corrected, where required, exclusively by the nomination party. Any mineral lease selected from this Tract and awarded by the Louisiana State Mineral Board shall be without warranty of any kind, either express, implied, or statutory, including, but not limited to, the implied warranties of merchantability and fitness for a particular purpose. Should the mineral lease awarded by the Louisiana State Mineral Board be subsequently modified, cancelled or abrogated due to the existence of conflicting leases, operating agreements, private claims or other future obligations or conditions which may affect all or any portion of the leased Tract, it shall not relieve the Lessee of the obligation to pay any bonus due thereon to the Louisiana State Mineral Board, nor shall the Louisiana State Mineral Board be obligated to refund any consideration paid by the Lessor prior to such modification, cancellation, or abrogation, including, but not limited to, bonuses, rentals and royalties.

NOTE: The State of Louisiana does hereby reserve, and this lease shall be subject to, the imprescriptible right of surface use in the nature of a servitude in favor of the Department of Natural Resources, including its Offices and Commissions, for the sole purpose of implementing, constructing, servicing and maintaining approved coastal zone management and/or restoration projects. Utilization of any and all rights derived under this lease by the mineral lessee, its agents, successors or assigns, shall not interfere with nor hinder the reasonable surface use by the Department of Natural Resources, its Offices or Commissions, as herein above reserved.

Applicant: Dara Doty

Bidder	Cash Payment	Price / Acre	Rental	Oil	Gas	Other



TRACT 35522 - Portion of Block 3, Vermilion Block Area, Vermilion Parish, Louisiana

The beds and bottoms of all water bodies belonging to the State of Louisiana located in that portion of Block 3, Vermilion Block Area, together with any present lands formed by accretion to the shoreline, located in Vermilion Parish, Louisiana, and not presently under mineral lease on July 9, 2003, the geographical area of which is more fully described as follows: Beginning at a point on the West line of Block 3, Vermilion Area, Revised, having Coordinates of X = 1,617,866.08 and Y = 323,387.17; thence East 14,758.04 feet to a point on the East line of said Block 3 having Coordinates of X = 1,632,624.12 and Y = 323,387.17; thence South 1,302.63 feet along the East line of said Block 3 to a point, also being the Northeast corner of State Lease No. 16903 having Coordinates of X = 1,632,624.12 and Y = 322,084.54; thence along the boundary of said State Lease No. 16903 the following courses: West 2,000.00 feet, South 3,001.72 feet, West 1,519.17 feet and South 1,500.00 feet to the Southwest corner of said State Lease No. 16903, also being a point on the South line of said Block 3 having Coordinates of X = 1,629,104.95 and Y = 317,582.82; thence West 11,238.87 feet along the South line of said Block 3 to its Southwest corner having Coordinates of X = 1,617,866.08 and Y = 317,582.82; thence North 5,804.35 feet along the West line of said Block 3 to the point of beginning, containing approximately **1,707.50 acres**, all as more particularly outlined on a plat on file in the Office of Mineral Resources, Department of Natural Resources. All bearings, distances and coordinates are based on Louisiana Coordinate System of 1927, (North or South Zone).

NOTE: The above description of the Tract nominated for lease has been provided and corrected, where required, exclusively by the nomination party. Any mineral lease selected from this Tract and awarded by the Louisiana State Mineral Board shall be without warranty of any kind, either express, implied, or statutory, including, but not limited to, the implied warranties of merchantability and fitness for a particular purpose. Should the mineral lease awarded by the Louisiana State Mineral Board be subsequently modified, cancelled or abrogated due to the existence of conflicting leases, operating agreements, private claims or other future obligations or conditions which may affect all or any portion of the leased Tract, it shall not relieve the Lessee of the obligation to pay any bonus due thereon to the Louisiana State Mineral Board, nor shall the Louisiana State Mineral Board be obligated to refund any consideration paid by the Lessor prior to such modification, cancellation, or abrogation, including, but not limited to, bonuses, rentals and royalties.

NOTE: The State of Louisiana does hereby reserve, and this lease shall be subject to, the imprescriptible right of surface use in the nature of a servitude in favor of the Department of Natural Resources, including its Offices and Commissions, for the sole purpose of implementing, constructing, servicing and maintaining approved coastal zone management and/or restoration projects. Utilization of any and all rights derived

under this lease by the mineral lessee, its agents, successors or assigns, shall not interfere with nor hinder the reasonable surface use by the Department of Natural Resources, its Offices or Commissions, as herein above reserved.

Applicant: Dara Doty

Bidder	Cash Payment	Price / Acre	Rental	Oil	Gas	Other

