

**TRACT 35555 - Jefferson Parish, Louisiana**

All of the lands now or formerly constituting the beds and bottoms of all water bodies of every nature and description the title of which vests in the State of Louisiana, together with all islands arising therein and other lands formed by accretion or by reliction, where allowed by law, excepting tax adjudicated lands, and not presently under mineral lease on July 9, 2003, situated in Jefferson Parish, Louisiana, and more particularly described as follows: Beginning at a point having Coordinates of X = 2,428,477.83 and Y = 271,804.63; thence South 2,680.00 feet to a point having Coordinates of X = 2,428,477.83 and Y = 269,124.63; thence Westerly approximately 1,408 feet to a corner on the East boundary of State Lease No. 1217, as amended; thence Westerly along said East boundary of said State Lease No. 1217, 2,500.00 feet to a corner; thence continuing on said East boundary of said State Lease No. 1217 Northerly approximately 2,710 feet to the intersection with an East West line having a Coordinate Y = 271,804.63; thence East approximately 3,938 feet to the point of beginning, containing approximately **218 acres**, all as more particularly outlined on a plat on file in the Office of Mineral Resources, Department of Natural Resources. All bearings, distances and coordinates are based on Louisiana Coordinate System of 1927, (North or South Zone), where applicable.

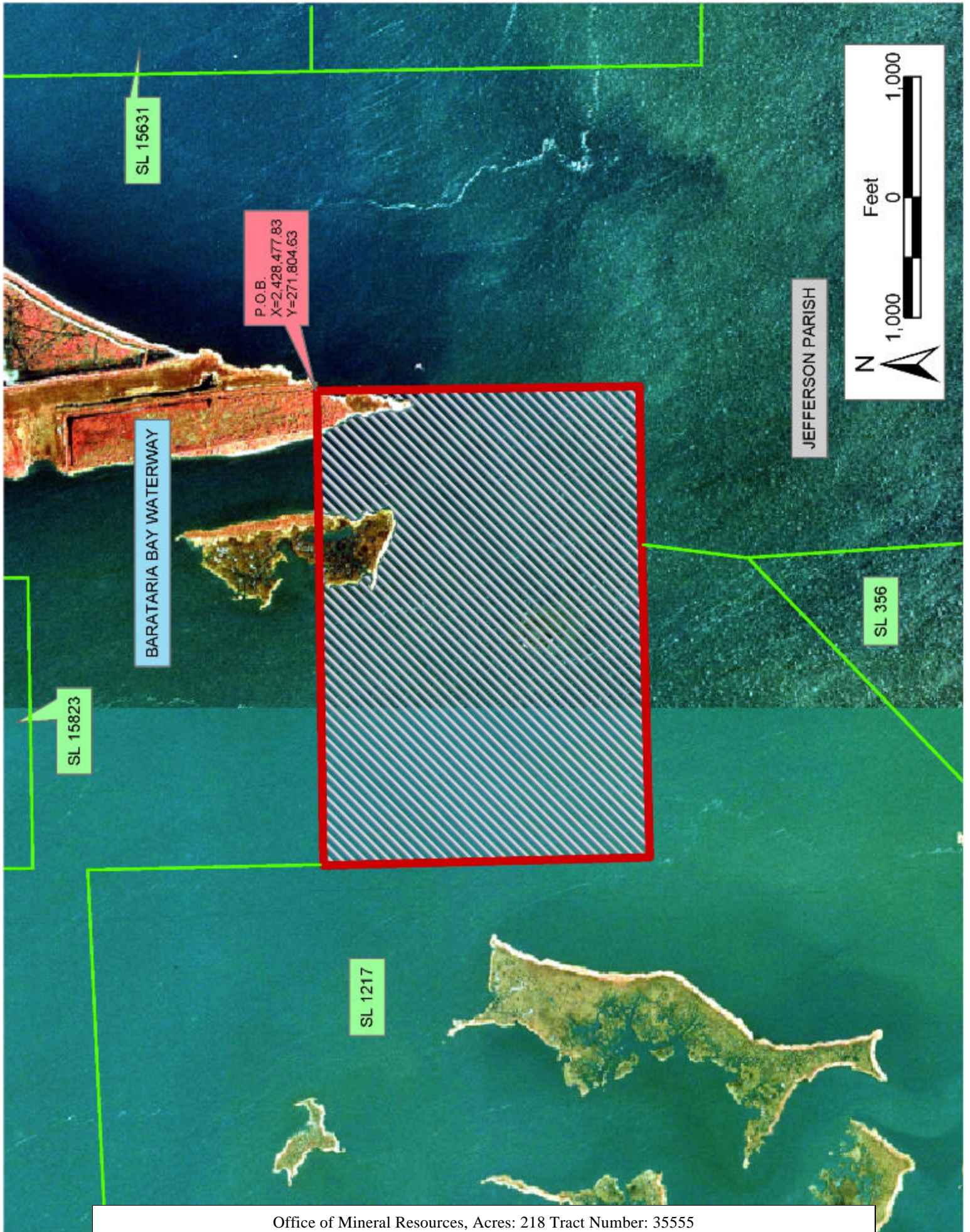
NOTE: The above description of the Tract nominated for lease has been provided and corrected, where required, exclusively by the nomination party. Any mineral lease selected from this Tract and awarded by the Louisiana State Mineral Board shall be without warranty of any kind, either express, implied, or statutory, including, but not limited to, the implied warranties of merchantability and fitness for a particular purpose. Should the mineral lease awarded by the Louisiana State Mineral Board be subsequently modified, cancelled or abrogated due to the existence of conflicting leases, operating agreements, private claims or other future obligations or conditions which may affect all or any portion of the leased Tract, it shall not relieve the Lessee of the obligation to pay any bonus due thereon to the Louisiana State Mineral Board, nor shall the Louisiana State Mineral Board be obligated to refund any consideration paid by the Lessor prior to such modification, cancellation, or abrogation, including, but not limited to, bonuses, rentals and royalties.

NOTE: The State of Louisiana does hereby reserve, and this lease shall be subject to, the imprescriptible right of surface use in the nature of a servitude in favor of the Department of Natural Resources, including its Offices and Commissions, for the sole purpose of implementing, constructing, servicing and maintaining approved coastal zone management and/or restoration projects. Utilization of any and all rights derived under this lease by the mineral lessee, its agents, successors or assigns, shall not interfere with nor hinder the reasonable surface use by the Department of Natural Resources, its Offices or Commissions, as herein above reserved.

NOTE: The Department of Wildlife and Fisheries has designated certain areas in the coastal waters of the State of Louisiana as Oyster Seed Bed Areas. The exact location of those Seed Bed Areas must be obtained from the Department of Wildlife and Fisheries and any work done under a mineral lease from the State of Louisiana may necessarily be conducted in conformity with the rules and regulations promulgated by the said Department of Wildlife and Fisheries for Oyster Seed Bed Areas.

Applicant: John D. Brouillette

Bidder	Cash Payment	Price / Acre	Rental	Oil	Gas	Other



**TRACT 35556 - Terrebonne Parish, Louisiana**

All of the lands now or formerly constituting the beds and bottoms of all water bodies of every nature and description the title of which vests in the State of Louisiana, together with all islands arising therein and other lands formed by accretion or by reliction, where allowed by law, excepting tax adjudicated lands, and not presently under mineral lease on July 9, 2003, situated in Terrebonne Parish, Louisiana, and more particularly described as follows: Beginning at a point having Coordinates of X = 2,145,400.00 and Y = 272,382.24; thence South 89 degrees 41 minutes 29 seconds East a distance of 12,100.17 feet to a point having Coordinates of X = 2,157,499.99 and Y = 272,317.07; thence South 5,397.07 feet to a point having Coordinates of X = 2,157,499.99 and Y = 266,920.00; thence West to the Northeast corner of State Lease No. 17174 having Coordinates of X = 2,156,880.00 and Y = 266,920.00; thence along the boundaries of said State Lease No. 17174 the following: West 5,280.00 feet and South 5,300.00 feet to its Southwest corner, thence South 1,400.00 feet and East 5,280.00 feet to a point having Coordinates of X = 2,156,880.00 and Y = 260,220.00; thence East to a point having Coordinates of X = 2,157,499.99 and Y = 260,220.00; thence South 3,622.79 feet to a point having Coordinates of X = 2,157,499.99 and Y = 256,597.21; thence West 18,480.00 feet to a point having Coordinates of X = 2,139,019.99 and Y = 256,597.21; thence North 2,941.71 feet to a point on the South line of State Lease No. 12683, as amended; thence along the boundaries of said State Lease No. 12683 the following: Easterly and Northeasterly to its Southeast corner; thence South 89 degrees 18 minutes 02 seconds East approximately 5,757 feet to a point having Coordinates of X = 2,145,400.00 and Y = 259,585.09; thence North 4,866.31 feet to the Southeast corner of State Lease No. 16000 having Coordinates of X = 2,145,400.00 and Y = 264,451.40; thence continue along the East line of said State Lease No. 16000 to its Northeast corner having Coordinates of X = 2,145,400.00 and Y = 267,091.40; thence continue North 5,290.84 feet to the point of beginning, estimated to contain **2,115.74 acres**, all as more particularly outlined on a plat on file in the Office of Mineral Resources, Department of Natural Resources. All bearings, distances and coordinates are based on Louisiana Coordinate System of 1927, (North or South Zone), where applicable.

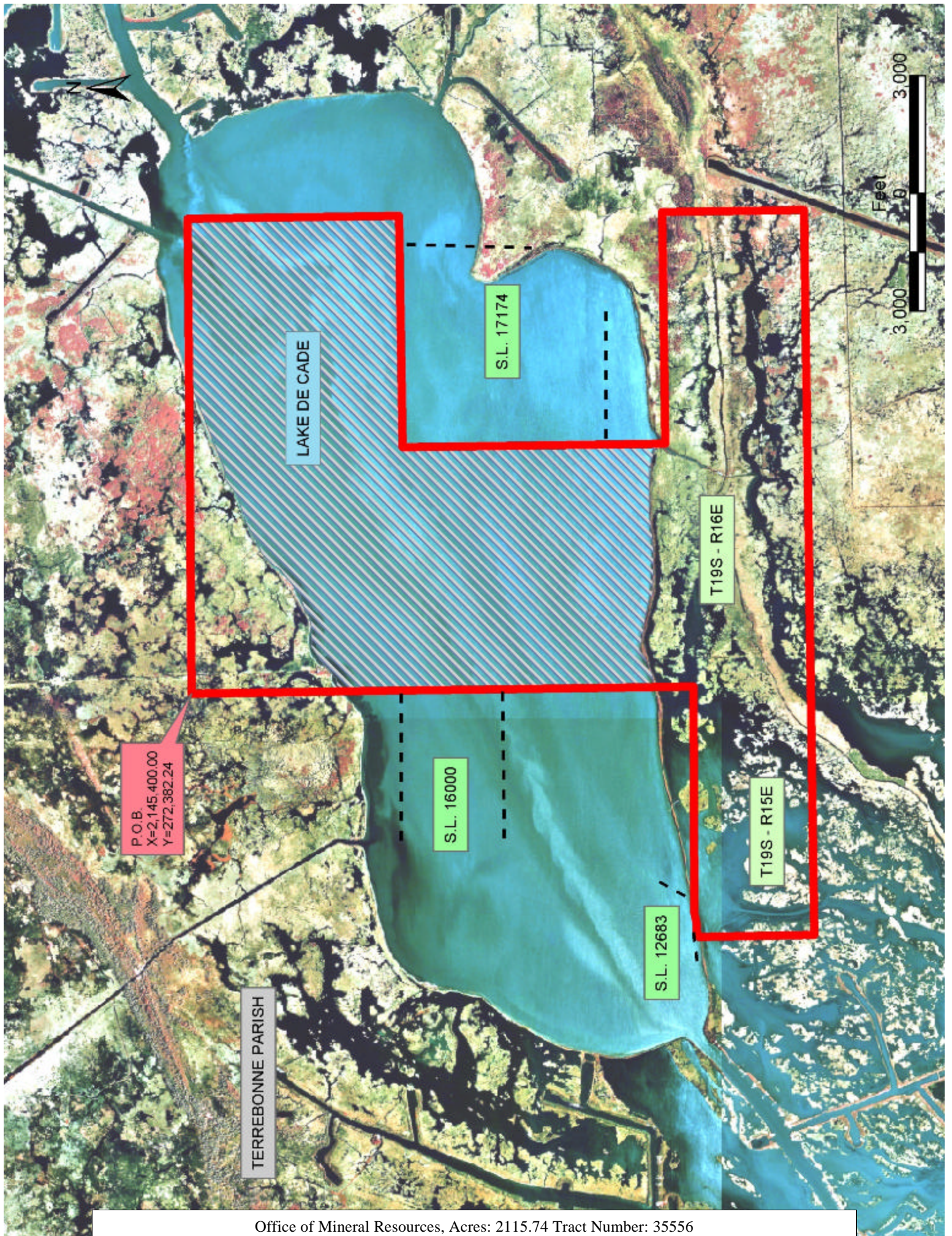
NOTE: The above description of the Tract nominated for lease has been provided and corrected, where required, exclusively by the nomination party. Any mineral lease selected from this Tract and awarded by the Louisiana State Mineral Board shall be without warranty of any kind, either express, implied, or statutory, including, but not limited to, the implied warranties of merchantability and fitness for a particular purpose. Should the mineral lease awarded by the Louisiana State Mineral Board be subsequently modified, cancelled or abrogated due to the existence of conflicting leases, operating agreements, private claims or other future obligations or conditions which may affect all or any portion of the leased Tract, it shall not relieve the Lessee of the obligation to pay any bonus due thereon to the Louisiana State Mineral Board, nor shall the Louisiana State Mineral Board be obligated to refund any consideration

paid by the Lessor prior to such modification, cancellation, or abrogation, including, but not limited to, bonuses, rentals and royalties.

NOTE: The State of Louisiana does hereby reserve, and this lease shall be subject to, the imprescriptible right of surface use in the nature of a servitude in favor of the Department of Natural Resources, including its Offices and Commissions, for the sole purpose of implementing, constructing, servicing and maintaining approved coastal zone management and/or restoration projects. Utilization of any and all rights derived under this lease by the mineral lessee, its agents, successors or assigns, shall not interfere with nor hinder the reasonable surface use by the Department of Natural Resources, its Offices or Commissions, as herein above reserved.

Applicant: Leslie L. Moore

Bidder	Cash Payment	Price / Acre	Rental	Oil	Gas	Other



P.O.B.  
X=2,145,400.00  
Y=272,382.24

TERREBONNE PARISH

LAKE DE CADE

S.L. 17174

S.L. 16000

S.L. 12683

T19S - R16E

T19S - R15E



**TRACT 35557 - Portion of Blocks 48, and 52, Main Pass Area, Revised, Plaquemines Parish, Louisiana**

All of the lands now or formerly constituting the beds and bottoms of all water bodies of every nature and description the title of which vests in the State of Louisiana, together with all islands arising therein and other lands formed by accretion or by reliction, where allowed by law, excepting tax adjudicated lands, and not presently under mineral lease on July 9, 2003, situated in Plaquemines Parish, Louisiana, and more particularly described as follows: Beginning at a point within Block 48, Main Pass Area, Revised, having Coordinates of X = 2,639,550.00 and Y = 266,080.00; thence East 7,800.00 feet to the Northwest corner of Block 52, Main Pass Area, Revised, having Coordinates of X = 2,647,350.00 and Y = 266,080.00; thence East 2,675.00 feet along the North line of said Block 52 to the Southwest corner of State Lease No. 1268, as amended, having Coordinates of X = 2,650,025.00 and Y = 266,080.00; thence East 2,725.00 feet along the South line of said State Lease No. 1268 to the Northwest corner of State Lease No. 16664 having Coordinates of X = 2,652,750.00 and Y = 266,080.00; thence South 1,223.84 feet along the Western boundary of said State Lease No. 16664 to its most Westerly Southwest corner having Coordinates of X = 2,652,750.00 and Y = 264,856.16; thence South 1,067.47 feet to the Northwest corner of State Lease No. 16665 having Coordinates of X = 2,652,750.00 and Y = 263,788.69; thence South 1,956.21 feet along the West line of said State Lease No. 16665 to its Southwest corner having Coordinates of X = 2,652,750.00 and Y = 261,832.48; thence South approximately 1,447 feet to a point on the common boundary line between said Block 52 and State Lease No. 195, as amended; thence Westerly approximately 5,401 feet along the common boundary line between said Block 52 and said State Lease No. 195 to the most Westerly Southwest corner of said Block 52, said corner also being the Southeast corner of said Block 48; thence Westerly approximately 3,491 feet along the common boundary line between said Block 48 and said State Lease No. 195 to the intersection of a line that bears North 15 degrees 30 minutes 00 seconds West through a point having Coordinates of X = 2,643,531.15 and Y = 261,415.67; thence North 15 degrees 30 minutes 00 seconds West approximately 1,229 feet to a point having Coordinates of X = 2,643,531.15 and Y = 261,415.67; thence North 41 degrees 40 minutes 00 seconds West 5,988.53 feet to a point having Coordinates of X = 2,639,550.00 and Y = 265,889.25; thence North 190.75 feet to the point of beginning, **LESS AND EXCEPT** that portion, if any, of State Lease No. 195, as amended, that may lie within the above described tract, containing approximately **1,242 acres**, all as more particularly outlined on a plat on file in the Office of Mineral Resources, Department of Natural Resources. All bearings, distances and coordinates are based on Louisiana Coordinate System of 1927, (North or South Zone), where applicable.

NOTE: The above description of the Tract nominated for lease has been provided and corrected, where required, exclusively by the nomination party. Any mineral lease selected from this Tract and awarded by the Louisiana State Mineral Board shall be without warranty of any kind,

either express, implied, or statutory, including, but not limited to, the implied warranties of merchantability and fitness for a particular purpose. Should the mineral lease awarded by the Louisiana State Mineral Board be subsequently modified, cancelled or abrogated due to the existence of conflicting leases, operating agreements, private claims or other future obligations or conditions which may affect all or any portion of the leased Tract, it shall not relieve the Lessee of the obligation to pay any bonus due thereon to the Louisiana State Mineral Board, nor shall the Louisiana State Mineral Board be obligated to refund any consideration paid by the Lessor prior to such modification, cancellation, or abrogation, including, but not limited to, bonuses, rentals and royalties.

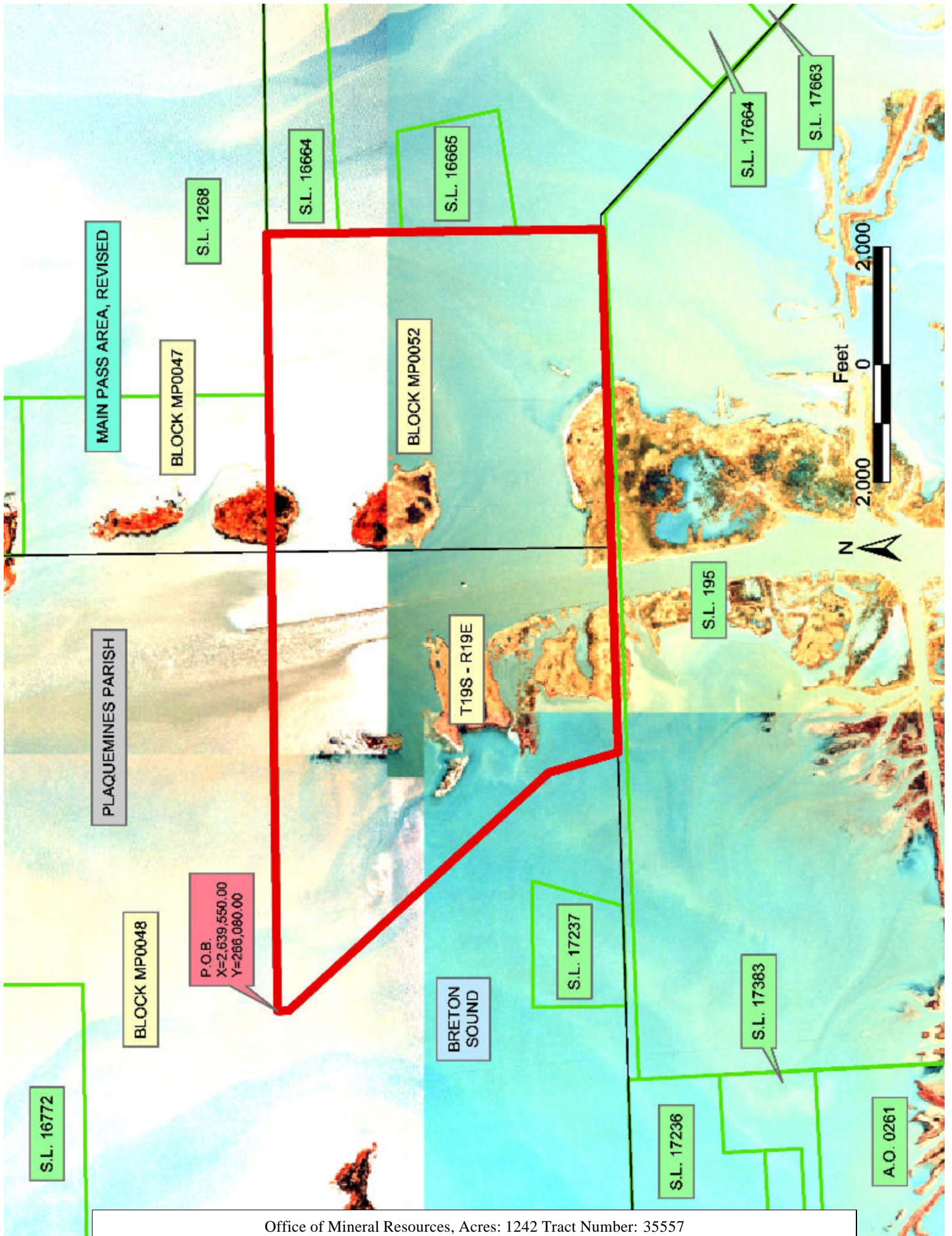
NOTE: The State of Louisiana does hereby reserve, and this lease shall be subject to, the imprescriptible right of surface use in the nature of a servitude in favor of the Department of Natural Resources, including its Offices and Commissions, for the sole purpose of implementing, constructing, servicing and maintaining approved coastal zone management and/or restoration projects. Utilization of any and all rights derived under this lease by the mineral lessee, its agents, successors or assigns, shall not interfere with nor hinder the reasonable surface use by the Department of Natural Resources, its Offices or Commissions, as herein above reserved.

NOTE: The Department of Wildlife and Fisheries has designated certain areas in the coastal waters of the State of Louisiana as Oyster Seed Bed Areas. The exact location of those Seed Bed Areas must be obtained from the Department of Wildlife and Fisheries and any work done under a mineral lease from the State of Louisiana may necessarily be conducted in conformity with the rules and regulations promulgated by the said Department of Wildlife and Fisheries for Oyster Seed Bed Areas.

Applicant: Freese Oil Realtors

Bidder	Cash Payment	Price / Acre	Rental	Oil	Gas	Other





**TRACT 35558 - Portion of Block 48, Main Pass Area, Revised, Plaquemines Parish, Louisiana**

All of the lands now or formerly constituting the beds and bottoms of all water bodies of every nature and description the title of which vests in the State of Louisiana, together with all islands arising therein and other lands formed by accretion or by reliction, where allowed by law, excepting tax adjudicated lands, and not presently under mineral lease on July 9, 2003, situated in Plaquemines Parish, Louisiana, and more particularly described as follows: Beginning at a point within Block 48, Main Pass Area, Revised, being the Northwest corner of State Lease No. 17237 having Coordinates of X = 2,639,550.00 and Y = 261,730.00; thence North 4,159.25 feet to a point having Coordinates of X = 2,639,550.00 and Y = 265,889.25; thence South 41 degrees 40 minutes 00 seconds East 5,988.53 feet to a point having Coordinates of X = 2,643,531.15 and Y = 261,415.67; thence South 15 degrees 30 minutes 00 seconds East approximately 1,229 feet to a point on the Northern boundary of State Lease No. 195, as amended; thence Westerly approximately 2,603 feet along the Northern boundary of said State Lease No. 195 to the Southeast corner of said State Lease No. 17237; thence North 16 degrees 00 minutes 00 seconds East approximately 1,606 feet along the East line of said State Lease No. 17237 to its Northeast corner having Coordinates of X = 2,641,700.00 and Y = 261,730.00; thence West 2,150.00 feet along the North line of said State Lease No. 17237 to the point of beginning, **LESS AND EXCEPT** that portion, if any, of State Lease No. 195, as amended, that may lie within the above described tract, containing approximately **252 gross acres and 151.2 net acres**, all as more particularly outlined on a plat on file in the Office of Mineral Resources, Department of Natural Resources. All bearings, distances and coordinates are based on Louisiana Coordinate System of 1927, (North or South Zone), where applicable.

NOTE: The above description of the Tract nominated for lease has been provided and corrected, where required, exclusively by the nomination party. Any mineral lease selected from this Tract and awarded by the Louisiana State Mineral Board shall be without warranty of any kind, either express, implied, or statutory, including, but not limited to, the implied warranties of merchantability and fitness for a particular purpose. Should the mineral lease awarded by the Louisiana State Mineral Board be subsequently modified, cancelled or abrogated due to the existence of conflicting leases, operating agreements, private claims or other future obligations or conditions which may affect all or any portion of the leased Tract, it shall not relieve the Lessee of the obligation to pay any bonus due thereon to the Louisiana State Mineral Board, nor shall the Louisiana State Mineral Board be obligated to refund any consideration paid by the Lessor prior to such modification, cancellation, or abrogation, including, but not limited to, bonuses, rentals and royalties.

NOTE: The State of Louisiana does hereby reserve, and this lease shall be subject to, the imprescriptible right of surface use in the nature of a servitude in favor of the Department of Natural Resources, including its

Offices and Commissions, for the sole purpose of implementing, constructing, servicing and maintaining approved coastal zone management and/or restoration projects. Utilization of any and all rights derived under this lease by the mineral lessee, its agents, successors or assigns, shall not interfere with nor hinder the reasonable surface use by the Department of Natural Resources, its Offices or Commissions, as herein above reserved.

NOTE: The Department of Wildlife and Fisheries has designated certain areas in the coastal waters of the State of Louisiana as Oyster Seed Bed Areas. The exact location of those Seed Bed Areas must be obtained from the Department of Wildlife and Fisheries and any work done under a mineral lease from the State of Louisiana may necessarily be conducted in conformity with the rules and regulations promulgated by the said Department of Wildlife and Fisheries for Oyster Seed Bed Areas.

Applicant: Freese Oil Realtors

Bidder	Cash Payment	Price / Acre	Rental	Oil	Gas	Other

PLAQUEMINES PARISH

BLOCK MP0048

MAIN PASS AREA, REVISED

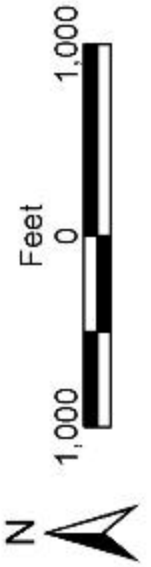
T19S-R19E

SL 17237

SL 195

SL 17236

P.O.B.  
X=2,639,550.00  
Y=261,730.00



**TRACT 35559 - Terrebonne Parish, Louisiana**

All of the lands now or formerly constituting the beds and bottoms of all water bodies of every nature and description the title of which vests in the State of Louisiana, together with all islands arising therein and other lands formed by accretion or by reliction, where allowed by law, excepting tax adjudicated lands, and not presently under mineral lease on July 9, 2003, situated in Terrebonne Parish, Louisiana, and more particularly described as follows: Beginning at a point having Coordinates of X = 2,135,468.59 and Y = 272,251.91; thence North 89 degrees 14 minutes 53 seconds East a distance of 9,932.27 feet to a point having Coordinates of X = 2,145,400.00 and Y = 272,382.24; thence South a distance of 5,290.84 feet to the Northeast corner of State Lease No. 16000 having Coordinates of X = 2,145,400.00 and Y = 267,091.40; thence along the boundaries of said State Lease No. 16000 as follows: West a distance of 5,280.00 feet, South a distance of 2,640.00 feet and East a distance of 5,280.00 feet to its Southeast corner having Coordinates of X = 2,145,400.00 and Y = 264,451.40; thence South a distance of 4,866.31 feet to a point having Coordinates of X = 2,145,400.00 and Y = 259,585.09; thence North 89 degrees 18 minutes 02 seconds West approximately 5,757 feet to the Southeast corner of State Lease No. 12683, as amended; thence North 27 degrees 26 minutes 11 seconds East a distance of 1,588.28 feet along the East boundary of said State Lease No. 12683 to its Northeast corner having Coordinates of X = 2,140,375.00 and Y = 261,065.00; thence along the Northern and Northwest boundaries of said State Lease No. 12683 the following: Northwesterly, Westerly, Southwesterly, Southerly and Southwesterly to its most West Northwest corner having Coordinates of X = 2,138,045.42 and Y = 260,115.90; thence along the West and South boundaries of said State Lease No. 12683 the following: Southeasterly and Northeasterly to a point on the South boundary of said State Lease No. 12683 having Coordinates of X = 2,139,019.99 and Y = 259,538.92; thence South a distance of 2,941.71 feet to a point having Coordinates of X = 2,139,019.99 and Y = 256,597.21; thence South 89 degrees 23 minutes 14 seconds West a distance of 3,206.05 feet to a point having Coordinates of X = 2,135,814.13 and Y = 256,562.92; thence North 02 degrees 06 minutes 47 seconds West a distance of 1,839.03 to the Southwest corner of State Lease No. 17602 having Coordinates of X = 2,135,746.32 and Y = 258,400.75; thence along the boundaries of said State Lease No. 17602 the following: East 898.63 feet to a point having Coordinates of X = 2,136,644.95 and Y = 258,400.75, North 5,900.00 feet to a point having Coordinates of X = 2,136,644.95 and Y = 264,300.75 and Westerly to its Northwest corner and the Northeast corner of State Lease No. 12571 and the Southeast corner of State Lease No. 13586, as amended; thence Northerly along the East line of said State Lease No. 13586 to its Northeast corner; thence continue Northerly to a point having Coordinates of X = 2,135,565.93 and Y = 269,563.36; thence North 02 degrees 04 minutes 25 seconds West a distance of 2,690.31 feet to the point of beginning, estimated to contain **1,154.03 acres**, all as more particularly outlined on a plat on file in the Office of Mineral Resources, Department of Natural Resources. All bearings,

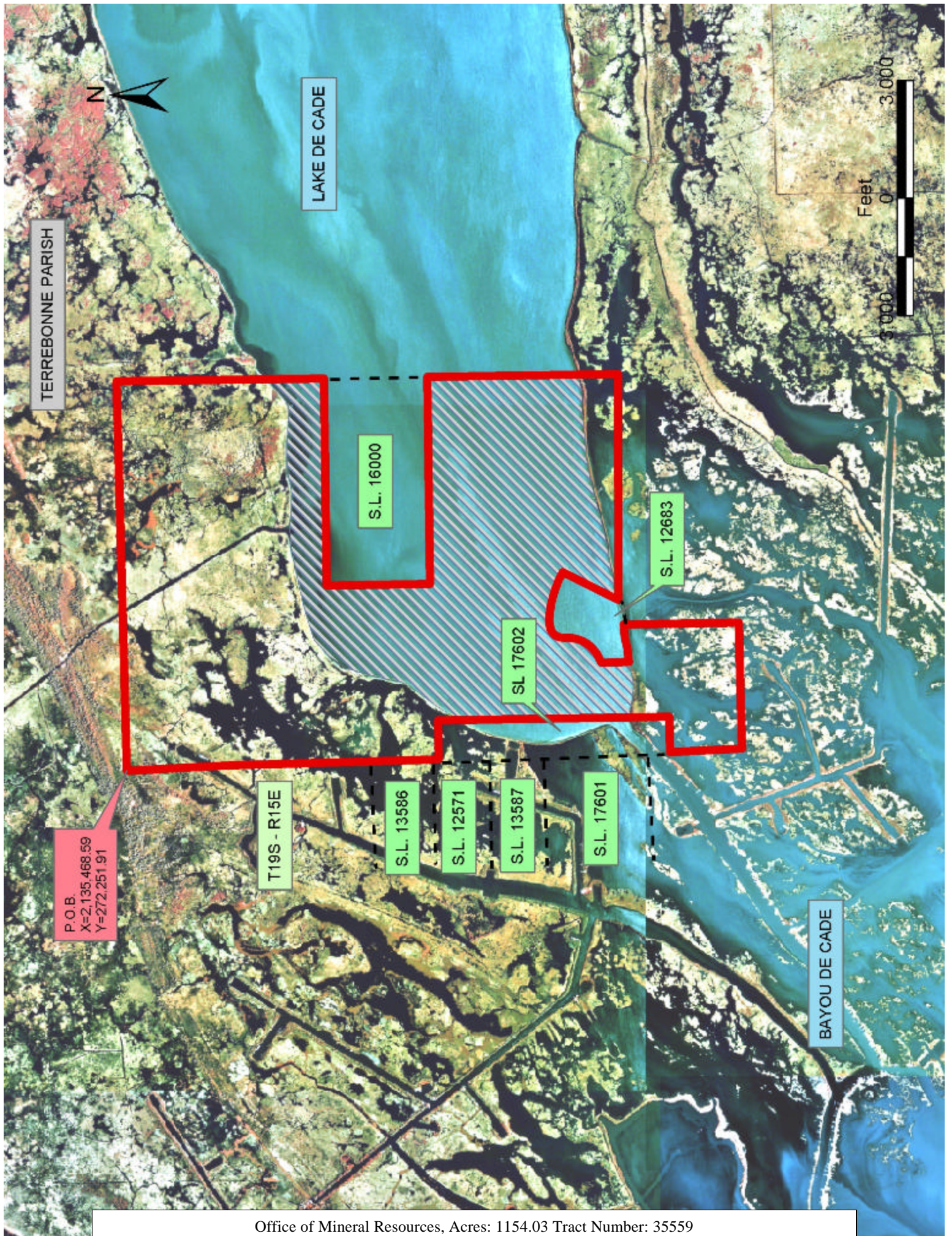
distances and coordinates are based on Louisiana Coordinate System of 1927, (North or South Zone), where applicable.

NOTE: The above description of the Tract nominated for lease has been provided and corrected, where required, exclusively by the nomination party. Any mineral lease selected from this Tract and awarded by the Louisiana State Mineral Board shall be without warranty of any kind, either express, implied, or statutory, including, but not limited to, the implied warranties of merchantability and fitness for a particular purpose. Should the mineral lease awarded by the Louisiana State Mineral Board be subsequently modified, cancelled or abrogated due to the existence of conflicting leases, operating agreements, private claims or other future obligations or conditions which may affect all or any portion of the leased Tract, it shall not relieve the Lessee of the obligation to pay any bonus due thereon to the Louisiana State Mineral Board, nor shall the Louisiana State Mineral Board be obligated to refund any consideration paid by the Lessor prior to such modification, cancellation, or abrogation, including, but not limited to, bonuses, rentals and royalties.

NOTE: The State of Louisiana does hereby reserve, and this lease shall be subject to, the imprescriptible right of surface use in the nature of a servitude in favor of the Department of Natural Resources, including its Offices and Commissions, for the sole purpose of implementing, constructing, servicing and maintaining approved coastal zone management and/or restoration projects. Utilization of any and all rights derived under this lease by the mineral lessee, its agents, successors or assigns, shall not interfere with nor hinder the reasonable surface use by the Department of Natural Resources, its Offices or Commissions, as herein above reserved.

Applicant: Leslie L. Moore

Bidder	Cash Payment	Price / Acre	Rental	Oil	Gas	Other



**TRACT 35560 - Terrebonne Parish, Louisiana**

All of the lands now or formerly constituting the beds and bottoms of all water bodies of every nature and description the title of which vests in the State of Louisiana, together with all islands arising therein and other lands formed by accretion or by reliction, where allowed by law, excepting tax adjudicated lands, and not presently under mineral lease on July 9, 2003, situated in Terrebonne Parish, Louisiana, and more particularly described as follows: Beginning at a point having Coordinates of X = 2,106,718.13 and Y = 207,033.10; thence Southwesterly on an arc having a radius of 2,720.00 feet and a chord bearing of South 53 degrees 49 minutes 54 seconds West 1,614.44 feet to a point having Coordinates of X = 2,105,414.81 and Y = 206,080.32; thence West 54.86 feet to a point having Coordinates of X = 2,105,359.95 and Y = 206,080.32; thence North 65 degrees 06 minutes 25 seconds West 417.62 feet to a point having Coordinates of X = 2,104,981.13 and Y = 206,256.11; thence Northwesterly on an arc having a radius of 5,850.00 feet and a chord bearing of North 67 degrees 37 minutes 18 seconds West 852.37 feet to a point on the East line of State Lease No. 725, as amended, having Coordinates of X = 2,104,192.95 and Y = 206,580.62; thence North 3,013.39 feet on the East line of said State Lease No. 725 to a point having Coordinates of X = 2,104,192.95 and Y = 209,594.02; thence South 57 degrees 30 minutes 43 seconds East 29.99 feet to a point having Coordinates of X = 2,104,218.25 and Y = 209,577.91; thence Southeasterly on an arc having a radius of 6,555.00 feet and a chord bearing of South 55 degrees 14 minutes 09 seconds East 465.52 feet to a point having Coordinates of X = 2,104,600.68 and Y = 209,312.47; thence Southeasterly on an arc having a radius of 8,625.00 feet and a chord bearing of South 42 degrees 53 minutes 27 seconds East 3,111.13 feet to the point of beginning, **LESS AND EXCEPT** all that portion of State Lease No. 725, as amended, that may lie within the above described tract, containing approximately **29.99 acres**, all as more particularly outlined on a plat on file in the Office of Mineral Resources, Department of Natural Resources. All bearings, distances and coordinates are based on Louisiana Coordinate System of 1927, (North or South Zone), where applicable.

NOTE: The above description of the Tract nominated for lease has been provided and corrected, where required, exclusively by the nomination party. Any mineral lease selected from this Tract and awarded by the Louisiana State Mineral Board shall be without warranty of any kind, either express, implied, or statutory, including, but not limited to, the implied warranties of merchantability and fitness for a particular purpose. Should the mineral lease awarded by the Louisiana State Mineral Board be subsequently modified, cancelled or abrogated due to the existence of conflicting leases, operating agreements, private claims or other future obligations or conditions which may affect all or any portion of the leased Tract, it shall not relieve the Lessee of the obligation to pay any bonus due thereon to the Louisiana State Mineral Board, nor shall the Louisiana State Mineral Board be obligated to refund any consideration paid by the Lessor prior to such modification, cancellation, or abrogation, including, but not limited to, bonuses, rentals and royalties.

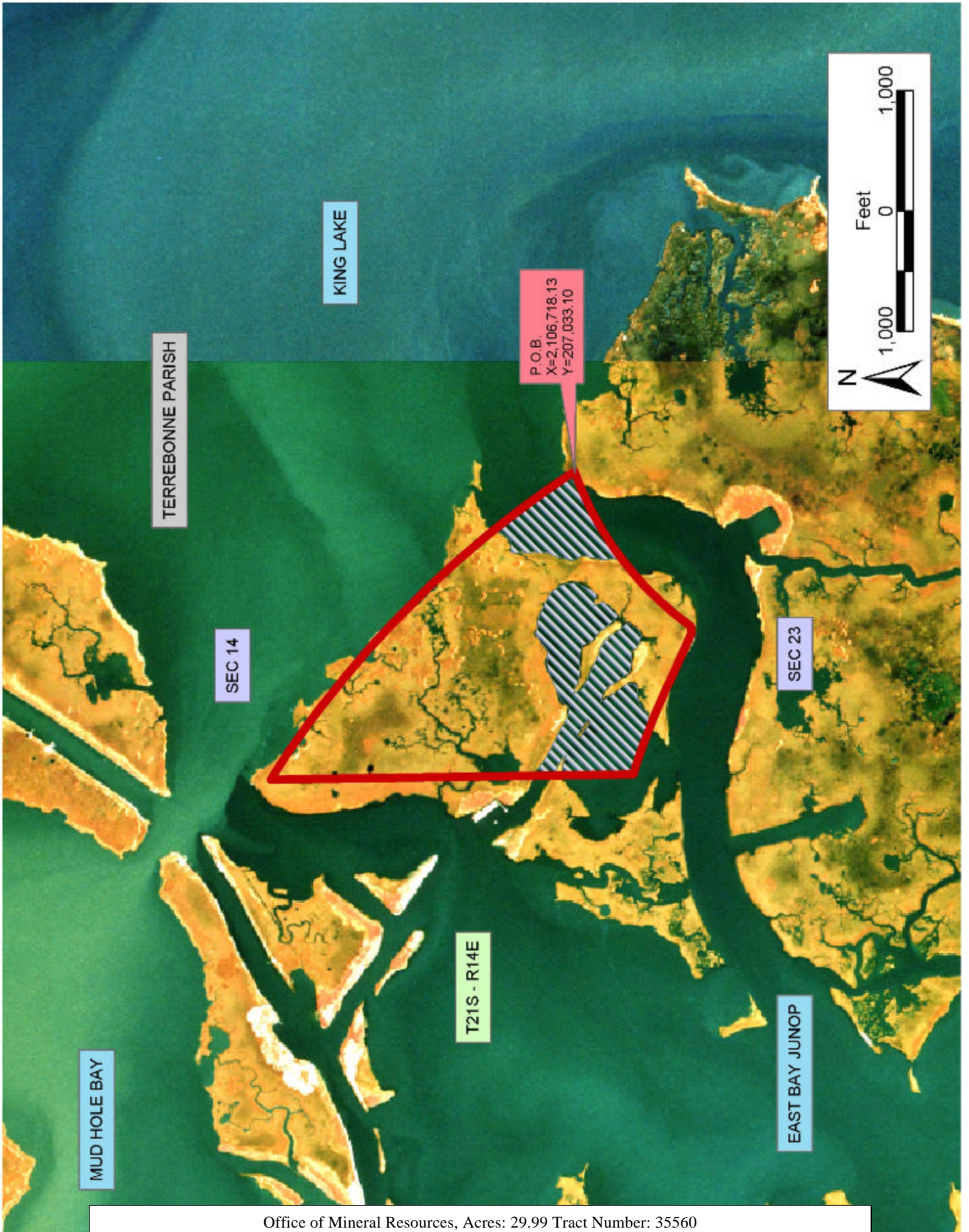


NOTE: The State of Louisiana does hereby reserve, and this lease shall be subject to, the imprescriptible right of surface use in the nature of a servitude in favor of the Department of Natural Resources, including its Offices and Commissions, for the sole purpose of implementing, constructing, servicing and maintaining approved coastal zone management and/or restoration projects. Utilization of any and all rights derived under this lease by the mineral lessee, its agents, successors or assigns, shall not interfere with nor hinder the reasonable surface use by the Department of Natural Resources, its Offices or Commissions, as herein above reserved.

NOTE: The Department of Wildlife and Fisheries has designated certain areas in the coastal waters of the State of Louisiana as Oyster Seed Bed Areas. The exact location of those Seed Bed Areas must be obtained from the Department of Wildlife and Fisheries and any work done under a mineral lease from the State of Louisiana may necessarily be conducted in conformity with the rules and regulations promulgated by the said Department of Wildlife and Fisheries for Oyster Seed Bed Areas.

Applicant: Junop Properties

Bidder	Cash Payment	Price / Acre	Rental	Oil	Gas	Other



**TRACT 35561 - Portion of Block 52, West Delta Area, Plaquemines Parish, Louisiana**

All of the lands now or formerly constituting the beds and bottoms of all water bodies of every nature and description the title of which vests in the State of Louisiana, together with all islands arising therein and other lands formed by accretion or by reliction, where allowed by law, excepting tax adjudicated lands, and not presently under mineral lease on July 9, 2003, situated in Plaquemines Parish, Louisiana, and more particularly described as follows: Beginning at a point on the South line of Block 52, West Delta Area, having Coordinates of X = 2,626,377.93 and Y = 144,676.30; thence North 10,200.20 feet to a point on the North line of said Block 52, also being a point on the South line of State Lease No. 192, as amended, having Coordinates of X = 2,626,377.93 and Y = 154,876.50; thence North 89 degrees 03 minutes 12 seconds East 10,869.55 feet along the North line of said Block 52 and the South line of said State Lease No. 192, and an extension thereof, to a point having Coordinates of X = 2,637,246.00 and Y = 155,056.07; thence South approximately 2,899 feet to a point on the Northern boundary of AO 0028 having a Coordinate of X = 2,637,246.00; thence along the boundary of said AO 0028 the following courses: Westerly approximately 4,789 feet and Southerly approximately 131 feet to its Southwest corner, also being the Northwest corner of AO 0001; thence along the boundary of said AO 0001 the following courses: Southerly approximately 5,280 feet and Easterly approximately 4,627 feet to a point of intersection with a North-South line having a Coordinate of X = 2,637,246.00; thence South approximately 288 feet to a point having Coordinates of X = 2,637,246.00 and Y = 146,518.00; thence South 63 degrees 05 minutes 31 seconds East 2,987.44 feet to a point having Coordinates of X = 2,639,910.00 and Y = 145,166.00; thence South 489.70 feet to a point on the South line of said Block 52 having Coordinates of X = 2,639,910.00 and Y = 144,676.30; thence West 6,560.00 feet on the South line of said Block 52 to the Southeast corner of AO 0263 having Coordinates of X = 2,633,350.00 and Y = 144,676.30; thence along the boundary of said AO 0263 the following courses: North 1,912.00 feet, West 2,037.07, and South 1,912.00 feet to its Southwest corner, also being a point on the South line of said Block 52 having Coordinates of X = 2,631,312.93 and Y = 144,676.30; thence West 4,935.00 feet to the point of beginning, **LESS AND EXCEPT** any portions of State Lease No. 192, as amended, State Lease No. 451, AO 0001, and AO 0028 that may lie within the above described tract, containing approximately **1,616 acres**, all as more particularly outlined on a plat on file in the Office of Mineral Resources, Department of Natural Resources. All bearings, distances and coordinates are based on Louisiana Coordinate System of 1927, (North or South Zone), where applicable.

NOTE: The above description of the Tract nominated for lease has been provided and corrected, where required, exclusively by the nomination party. Any mineral lease selected from this Tract and awarded by the Louisiana State Mineral Board shall be without warranty of any kind, either express, implied, or statutory, including, but not limited to, the

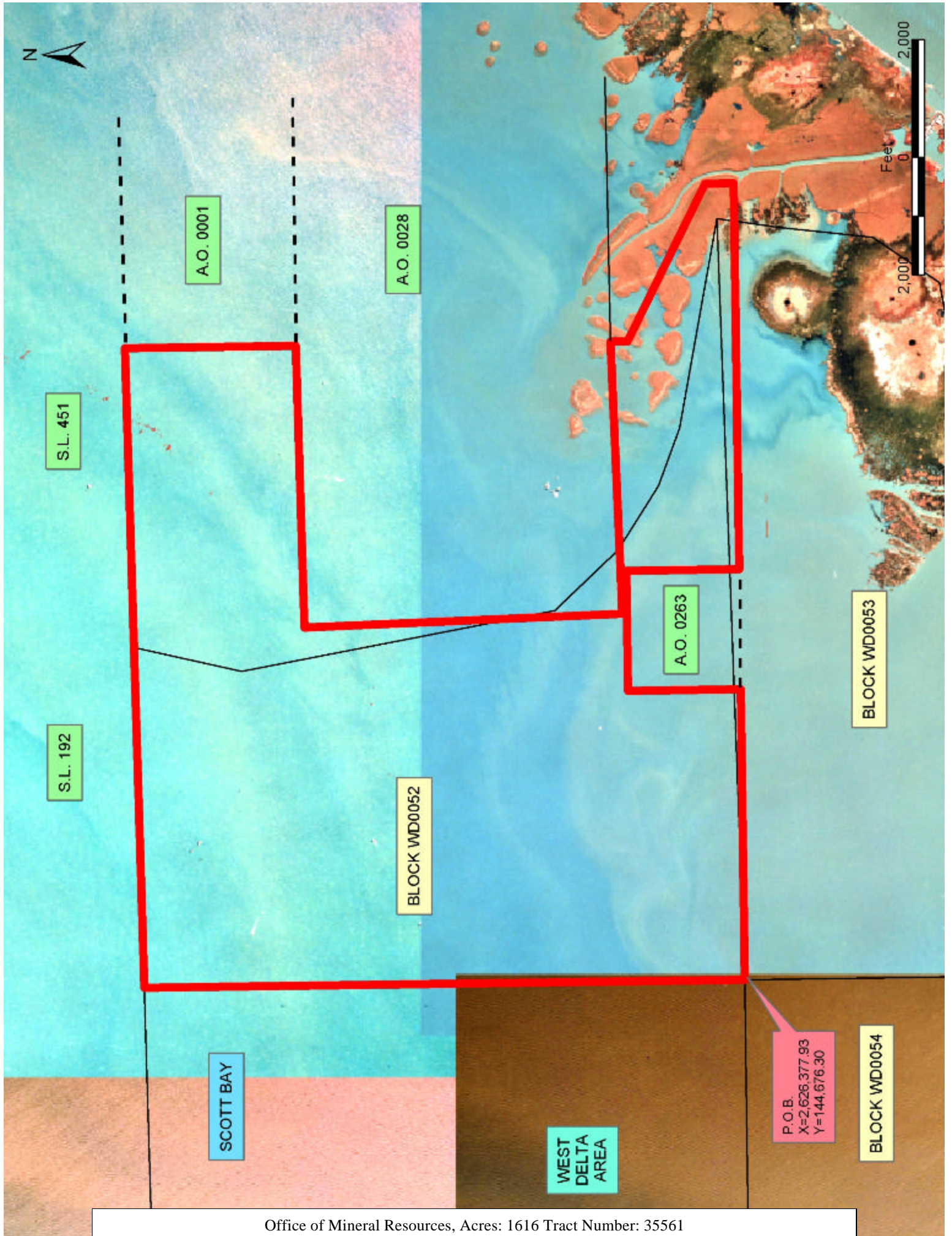
implied warranties of merchantability and fitness for a particular purpose. Should the mineral lease awarded by the Louisiana State Mineral Board be subsequently modified, cancelled or abrogated due to the existence of conflicting leases, operating agreements, private claims or other future obligations or conditions which may affect all or any portion of the leased Tract, it shall not relieve the Lessee of the obligation to pay any bonus due thereon to the Louisiana State Mineral Board, nor shall the Louisiana State Mineral Board be obligated to refund any consideration paid by the Lessor prior to such modification, cancellation, or abrogation, including, but not limited to, bonuses, rentals and royalties.

NOTE: The State of Louisiana does hereby reserve, and this lease shall be subject to, the imprescriptible right of surface use in the nature of a servitude in favor of the Department of Natural Resources, including its Offices and Commissions, for the sole purpose of implementing, constructing, servicing and maintaining approved coastal zone management and/or restoration projects. Utilization of any and all rights derived under this lease by the mineral lessee, its agents, successors or assigns, shall not interfere with nor hinder the reasonable surface use by the Department of Natural Resources, its Offices or Commissions, as herein above reserved.

NOTE: The Department of Wildlife and Fisheries has designated certain areas in the coastal waters of the State of Louisiana as Oyster Seed Bed Areas. The exact location of those Seed Bed Areas must be obtained from the Department of Wildlife and Fisheries and any work done under a mineral lease from the State of Louisiana may necessarily be conducted in conformity with the rules and regulations promulgated by the said Department of Wildlife and Fisheries for Oyster Seed Bed Areas.

Applicant: Pinnacle Resources, Inc.

Bidder	Cash Payment	Price / Acre	Rental	Oil	Gas	Other



**TRACT 35562 - Portion of Block 51, West Delta Area, Plaquemines Parish, Louisiana**

All of the lands now or formerly constituting the beds and bottoms of all water bodies of every nature and description the title of which vests in the State of Louisiana, together with all islands arising therein and other lands formed by accretion or by reliction, where allowed by law, excepting tax adjudicated lands, and not presently under mineral lease on July 9, 2003, situated in Plaquemines Parish, Louisiana, and more particularly described as follows: Beginning at the Southeast corner of Block 51, West Delta Area, having Coordinates of X = 2,620,902.00 and Y = 144,676.30; thence West 5,444.53 feet on the South line of said Block 51 to a point having Coordinates of X = 2,615,457.47 and Y = 144,676.30; thence Northerly 10,019.67 feet on a straight line to a point on the North line of said Block 51, also being the South line of State Lease No. 192, as amended, having Coordinates of X = 2,615,451.75 and Y = 154,695.97; thence North 89 degrees 03 minutes 12 seconds East 5,450.99 feet to the Northeast corner of said Block 51 having Coordinates of X = 2,620,902.00 and Y = 154,786.02; thence South 10,109.72 feet on the East line of said Block 51 to the point of beginning, **LESS AND EXCEPT** all that portion of State Lease No. 192, as amended, that may lie within the above described tract, containing approximately **1,258.64 acres**, all as more particularly outlined on a plat on file in the Office of Mineral Resources, Department of Natural Resources. All bearings, distances and coordinates are based on Louisiana Coordinate System of 1927, (North or South Zone), where applicable.

NOTE: The above description of the Tract nominated for lease has been provided and corrected, where required, exclusively by the nomination party. Any mineral lease selected from this Tract and awarded by the Louisiana State Mineral Board shall be without warranty of any kind, either express, implied, or statutory, including, but not limited to, the implied warranties of merchantability and fitness for a particular purpose. Should the mineral lease awarded by the Louisiana State Mineral Board be subsequently modified, cancelled or abrogated due to the existence of conflicting leases, operating agreements, private claims or other future obligations or conditions which may affect all or any portion of the leased Tract, it shall not relieve the Lessee of the obligation to pay any bonus due thereon to the Louisiana State Mineral Board, nor shall the Louisiana State Mineral Board be obligated to refund any consideration paid by the Lessor prior to such modification, cancellation, or abrogation, including, but not limited to, bonuses, rentals and royalties.

NOTE: The State of Louisiana does hereby reserve, and this lease shall be subject to, the imprescriptible right of surface use in the nature of a servitude in favor of the Department of Natural Resources, including its Offices and Commissions, for the sole purpose of implementing, constructing, servicing and maintaining approved coastal zone management and/or restoration projects. Utilization of any and all rights derived under this lease by the mineral lessee, its agents, successors or assigns,

shall not interfere with nor hinder the reasonable surface use by the Department of Natural Resources, its Offices or Commissions, as herein above reserved.

Applicant: Pinnacle Resources, Inc.

Bidder	Cash Payment	Price / Acre	Rental	Oil	Gas	Other



S.L. 192

WEST BAY

BLOCK WD0051

BLOCK WD0052

WEST DELTA AREA

PLAQUEMINES PARISH

P.O.B.  
X=2,620,902.00  
Y=144,676.30

S.L. 2549

BLOCK WD0055

BLOCK WD0054

2,000 Feet 0 2,000



**TRACT 35563 - Portion of Block 52, West Delta Area, Plaquemines Parish, Louisiana**

All of the lands now or formerly constituting the beds and bottoms of all water bodies of every nature and description the title of which vests in the State of Louisiana, together with all islands arising therein and other lands formed by accretion or by reliction, where allowed by law, excepting tax adjudicated lands, and not presently under mineral lease on July 9, 2003, situated in Plaquemines Parish, Louisiana, and more particularly described as follows: Beginning at the Southwest corner of Block 52, West Delta Area, having Coordinates of X = 2,620,902.00 and Y = 144,676.30; thence North 10,109.72 feet on the West line of said Block 52 to its Northwest corner, also being a point on the South line of State Lease No. 192, as amended, having Coordinates of X = 2,620,902.00 and Y = 154,786.02; thence North 89 degrees 03 minutes 12 seconds East 5,476.68 feet on the North line of said Block 52, also being the South line of said State Lease No. 192 to a point having Coordinates of X = 2,626,377.93 and Y = 154,876.50; thence South 10,200.20 feet to a point on the South line of said Block 52 having Coordinates of X = 2,626,377.93 and Y = 144,676.30; thence West 5,475.93 feet to the point of beginning, **LESS AND EXCEPT** all that portion of State Lease No. 192, as amended, that may lie within the above described tract, containing approximately **1,276.58 acres**, all as more particularly outlined on a plat on file in the Office of Mineral Resources, Department of Natural Resources. All bearings, distances and coordinates are based on Louisiana Coordinate System of 1927, (North or South Zone), where applicable.

NOTE: The above description of the Tract nominated for lease has been provided and corrected, where required, exclusively by the nomination party. Any mineral lease selected from this Tract and awarded by the Louisiana State Mineral Board shall be without warranty of any kind, either express, implied, or statutory, including, but not limited to, the implied warranties of merchantability and fitness for a particular purpose. Should the mineral lease awarded by the Louisiana State Mineral Board be subsequently modified, cancelled or abrogated due to the existence of conflicting leases, operating agreements, private claims or other future obligations or conditions which may affect all or any portion of the leased Tract, it shall not relieve the Lessee of the obligation to pay any bonus due thereon to the Louisiana State Mineral Board, nor shall the Louisiana State Mineral Board be obligated to refund any consideration paid by the Lessor prior to such modification, cancellation, or abrogation, including, but not limited to, bonuses, rentals and royalties.

NOTE: The State of Louisiana does hereby reserve, and this lease shall be subject to, the imprescriptible right of surface use in the nature of a servitude in favor of the Department of Natural Resources, including its Offices and Commissions, for the sole purpose of implementing, constructing, servicing and maintaining approved coastal zone management and/or restoration projects. Utilization of any and all rights derived under this lease by the mineral lessee, its agents, successors or assigns,

shall not interfere with nor hinder the reasonable surface use by the Department of Natural Resources, its Offices or Commissions, as herein above reserved.

NOTE: The Department of Wildlife and Fisheries has designated certain areas in the coastal waters of the State of Louisiana as Oyster Seed Bed Areas. The exact location of those Seed Bed Areas must be obtained from the Department of Wildlife and Fisheries and any work done under a mineral lease from the State of Louisiana may necessarily be conducted in conformity with the rules and regulations promulgated by the said Department of Wildlife and Fisheries for Oyster Seed Bed Areas.

Applicant: Pinnacle Resources, Inc.

Bidder	Cash Payment	Price / Acre	Rental	Oil	Gas	Other



S.L. 192

WEST BAY

PLAQUEMINES PARISH

BLOCK WD0051

WEST DELTA AREA

BLOCK WD0052

P.O.B.  
X=2,620,902.00  
Y=144,676.30

BLOCK WD0054

BLOCK WD0053



**TRACT 35564 - Plaquemines Parish, Louisiana**

All of the lands now or formerly constituting the beds and bottoms of all water bodies of every nature and description the title of which vests in the State of Louisiana, together with all islands arising therein and other lands formed by accretion or by reliction, where allowed by law, excepting tax adjudicated lands, and not presently under mineral lease on July 9, 2003, situated in Plaquemines Parish, Louisiana, and more particularly described as follows: Beginning at a point on the South line of Block 52, West Delta Area, having Coordinates of X = 2,639,910.00 and Y = 144,676.30; thence North 489.70 feet to a point having Coordinates of X = 2,639,910.00 and Y = 145,166.00; thence North 63 degrees 05 minutes 31 seconds West 2,987.44 feet to a point having Coordinates of X = 2,637,246.00 and Y = 146,518.00; thence North approximately 288 feet to a point on the South line of AO 0001 having a Coordinate of X = 2,637,246.00; thence along the boundary of said AO 0001 the following courses: Easterly approximately 3,293 feet and Northerly approximately 5,280 feet to its Northeast corner, also being a point on the South line of AO 0028; thence Easterly approximately 2,215 feet on the South line of said AO 0028 to its most Southeasterly corner, also being a point on the South line of State Lease No. 451; thence Easterly approximately 1,077 feet on the South line of said State Lease No. 451 to its Southeast corner; thence Easterly approximately 3,132 feet to the most Southerly Southwest corner of State Lease No. 2485, as amended; thence Easterly approximately 1,789 feet on the South line of said State Lease No. 2485 to its Southeast corner, also being a point on the Western boundary of State Lease No. 1924; thence Southwesterly along the Western boundary of said State Lease No. 1924 to a point on the North line, or an extension thereof, said Block 52 having a Coordinate of Y = 144,676.30; thence West approximately 3,841 feet to the point of beginning, containing approximately **597 acres**, all as more particularly outlined on a plat on file in the Office of Mineral Resources, Department of Natural Resources. All bearings, distances and coordinates are based on Louisiana Coordinate System of 1927, (North or South Zone), where applicable.

NOTE: The above description of the Tract nominated for lease has been provided and corrected, where required, exclusively by the nomination party. Any mineral lease selected from this Tract and awarded by the Louisiana State Mineral Board shall be without warranty of any kind, either express, implied, or statutory, including, but not limited to, the implied warranties of merchantability and fitness for a particular purpose. Should the mineral lease awarded by the Louisiana State Mineral Board be subsequently modified, cancelled or abrogated due to the existence of conflicting leases, operating agreements, private claims or other future obligations or conditions which may affect all or any portion of the leased Tract, it shall not relieve the Lessee of the obligation to pay any bonus due thereon to the Louisiana State Mineral Board, nor shall the Louisiana State Mineral Board be obligated to refund any consideration paid by the Lessor prior to such modification, cancellation, or abrogation, including, but not limited to, bonuses, rentals and royalties.

NOTE: The State of Louisiana does hereby reserve, and this lease shall be subject to, the imprescriptible right of surface use in the nature of a servitude in favor of the Department of Natural Resources, including its Offices and Commissions, for the sole purpose of implementing, constructing, servicing and maintaining approved coastal zone management and/or restoration projects. Utilization of any and all rights derived under this lease by the mineral lessee, its agents, successors or assigns, shall not interfere with nor hinder the reasonable surface use by the Department of Natural Resources, its Offices or Commissions, as herein above reserved.

NOTE: The Department of Wildlife and Fisheries has designated certain areas in the coastal waters of the State of Louisiana as Oyster Seed Bed Areas. The exact location of those Seed Bed Areas must be obtained from the Department of Wildlife and Fisheries and any work done under a mineral lease from the State of Louisiana may necessarily be conducted in conformity with the rules and regulations promulgated by the said Department of Wildlife and Fisheries for Oyster Seed Bed Areas.

Applicant: Pinnacle Resources, Inc.

Bidder	Cash Payment	Price / Acre	Rental	Oil	Gas	Other

