

**TRACT 35534 - Ouachita Parish, Louisiana**

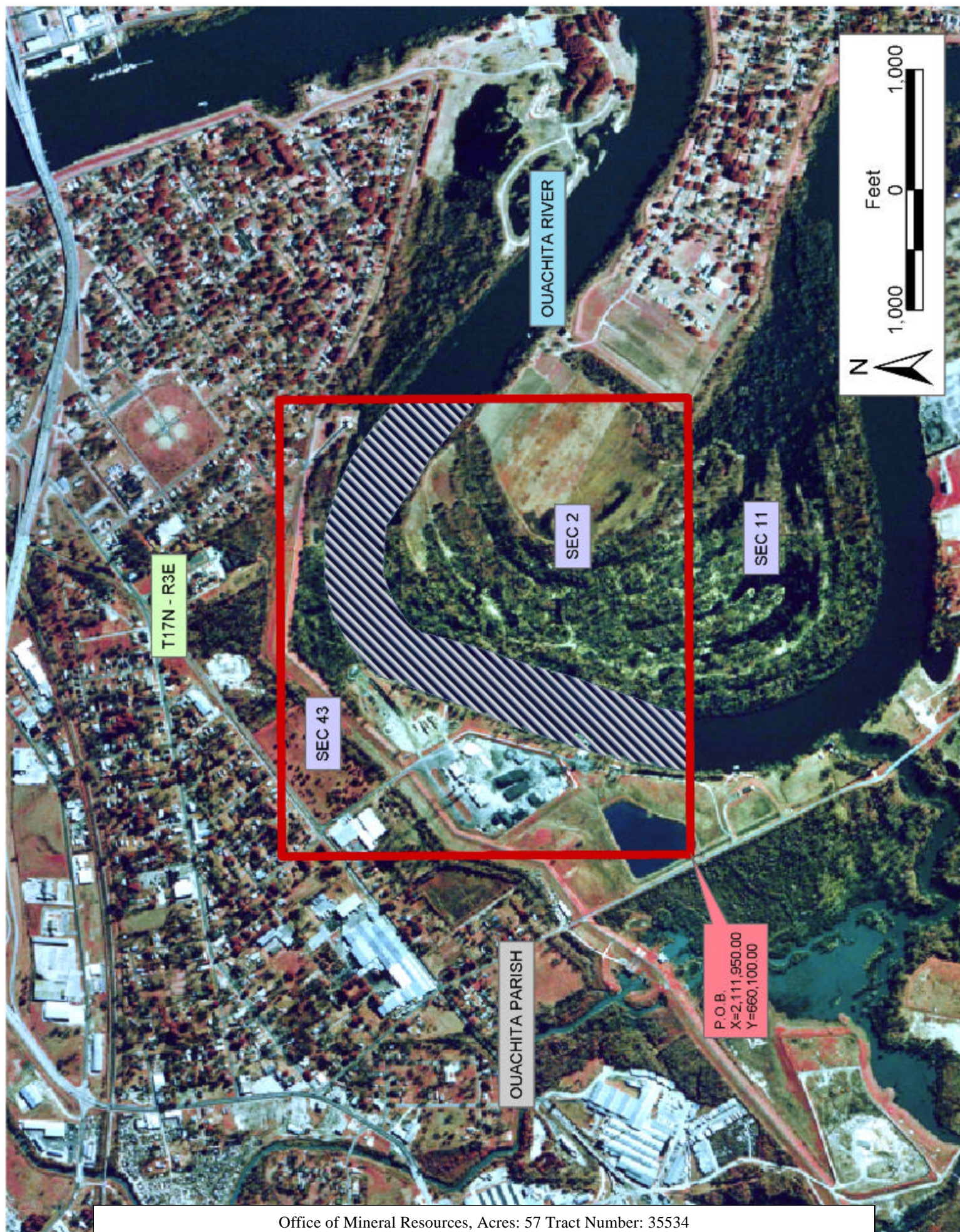
All of the lands now or formerly constituting the beds and bottoms of all water bodies of every nature and description the title of which vests in the State of Louisiana, together with all islands arising therein and other lands formed by accretion or by reliction, where allowed by law, excepting tax adjudicated lands, and not presently under mineral lease on July 9, 2003, situated in Ouachita Parish, Louisiana, and more particularly described as follows: Beginning at a point having Coordinates of X = 2,111,950.00 and Y = 660,100.00; thence North 3,400.00 feet to a point having Coordinates of X = 2,111,950.00 and Y = 663,500.00; thence East 3,800.00 feet to a point having Coordinates of X = 2,115,750.00 and Y = 663,500.00; thence South 3,400.00 feet to a point having Coordinates of X = 2,115,750.00 and Y = 660,100.00; thence West 3,800.00 feet to the point of beginning, containing approximately **57 acres**, all as more particularly outlined on a plat on file in the Office of Mineral Resources, Department of Natural Resources. All bearings, distances and coordinates are based on Louisiana Coordinate System of 1927, (North or South Zone), where applicable.

NOTE: The above description of the Tract nominated for lease has been provided and corrected, where required, exclusively by the nomination party. Any mineral lease selected from this Tract and awarded by the Louisiana State Mineral Board shall be without warranty of any kind, either express, implied, or statutory, including, but not limited to, the implied warranties of merchantability and fitness for a particular purpose. Should the mineral lease awarded by the Louisiana State Mineral Board be subsequently modified, cancelled or abrogated due to the existence of conflicting leases, operating agreements, private claims or other future obligations or conditions which may affect all or any portion of the leased Tract, it shall not relieve the Lessee of the obligation to pay any bonus due thereon to the Louisiana State Mineral Board, nor shall the Louisiana State Mineral Board be obligated to refund any consideration paid by the Lessor prior to such modification, cancellation, or abrogation, including, but not limited to, bonuses, rentals and royalties.

Applicant: Weisner Brown Operating Company

Bidder	Cash Payment	Price / Acre	Rental	Oil	Gas	Other







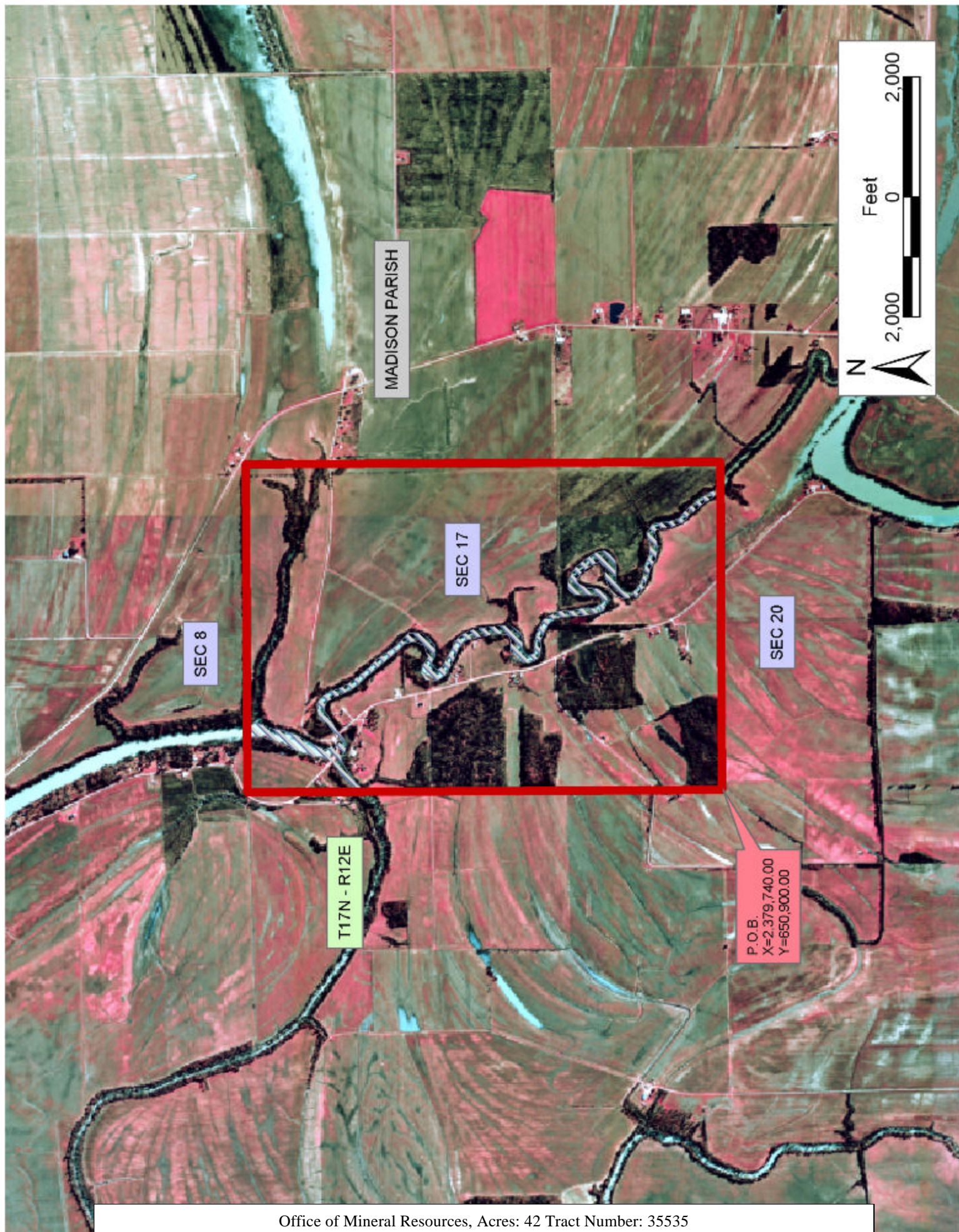
**TRACT 35535 - Madison Parish, Louisiana**

All of the lands now or formerly constituting the beds and bottoms of all water bodies of every nature and description the title of which vests in the State of Louisiana, together with all islands arising therein and other lands formed by accretion or by reliction, where allowed by law, excepting tax adjudicated lands, and not presently under mineral lease on July 9, 2003, situated in Madison Parish, Louisiana, and more particularly described as follows: Beginning at a point having Coordinates of X = 2,379,740.00 and Y = 650,900.00; thence North 7,910.00 feet to a point having Coordinates of X = 2,379,740.00 and Y = 658,810.00; thence East 5,470.00 feet to a point having Coordinates of X = 2,385,210.00 and Y = 658,810.00; thence South 7,910.00 feet to a point having Coordinates of X = 2,385,210.00 and Y = 650,900.00; thence West 5,470.00 feet to the point of beginning, containing approximately **42 acres**, all as more particularly outlined on a plat on file in the Office of Mineral Resources, Department of Natural Resources. All bearings, distances and coordinates are based on Louisiana Coordinate System of 1927, (North or South Zone), where applicable.

NOTE: The above description of the Tract nominated for lease has been provided and corrected, where required, exclusively by the nomination party. Any mineral lease selected from this Tract and awarded by the Louisiana State Mineral Board shall be without warranty of any kind, either express, implied, or statutory, including, but not limited to, the implied warranties of merchantability and fitness for a particular purpose. Should the mineral lease awarded by the Louisiana State Mineral Board be subsequently modified, cancelled or abrogated due to the existence of conflicting leases, operating agreements, private claims or other future obligations or conditions which may affect all or any portion of the leased Tract, it shall not relieve the Lessee of the obligation to pay any bonus due thereon to the Louisiana State Mineral Board, nor shall the Louisiana State Mineral Board be obligated to refund any consideration paid by the Lessor prior to such modification, cancellation, or abrogation, including, but not limited to, bonuses, rentals and royalties.

Applicant: Talbot Properties, Inc.

Bidder	Cash Payment	Price / Acre	Rental	Oil	Gas	Other





**TRACT 35536 - Avoyelles Catahoula and Concordia Parishes, Louisiana**

All of the lands now or formerly constituting the beds and bottoms of all water bodies of every nature and description the title of which vests in the State of Louisiana, together with all islands arising therein and other lands formed by accretion or by reliction, where allowed by law, excepting tax adjudicated lands, and not presently under mineral lease on July 9, 2003, situated in Avoyelles Catahoula and Concordia Parishes, Louisiana, and more particularly described as follows: Beginning at a point having Coordinates of X = 2,206,928.72 and Y = 220,487.67; thence South 89 degrees 59 minutes 29 seconds East 16,127.59 feet to a point having Coordinates of X = 2,223,056.31 and Y = 220,485.28; thence South 00 degrees 37 minutes 53 seconds East 5,377.40 feet to a point on the boundary of the Red River Wildlife Management Area having Coordinates of X = 2,223,115.57 and Y = 215,108.21; thence along the boundary of said Red River Wildlife Management Area the following courses: South 02 degrees 37 minutes 33 seconds East 3,265.94 feet to a point having Coordinates of X = 2,223,265.20 and Y = 211,845.70, South 89 degrees 37 minutes 31 seconds West 542.83 feet to a point having Coordinates of X = 2,222,722.38 and Y = 211,842.15, South 89 degrees 18 minutes 12 seconds West 1,034.79 feet to a point having Coordinates of X = 2,221,687.67 and Y = 211,829.57, South 89 degrees 37 minutes 40 seconds West 1,073.22 feet to a point having Coordinates of X = 2,220,614.47 and Y = 211,822.60, North 89 degrees 48 minutes 39 seconds West 1,153.91 feet to a point having Coordinates of X = 2,219,460.57 and Y = 211,826.41, North 89 degrees 10 minutes 40 seconds West 188.83 feet to a point having Coordinates of X = 2,219,271.76 and Y = 211,829.12, South 01 degrees 24 minutes 19 seconds West 4,679.64 feet to a point having Coordinates of X = 2,219,157.00 and Y = 207,150.89, South 01 degrees 37 minutes 57 seconds West 601.30 feet to a point having Coordinates of X = 2,219,139.87 and Y = 206,549.83; thence South 01 degrees 37 minutes 58 seconds West 3,110.14 feet to a point having Coordinates of X = 2,219,051.25 and Y = 203,440.95; thence North 89 degrees 59 minutes 57 seconds West 12,266.09 feet to a point having Coordinates of X = 2,206,785.16 and Y = 203,441.14; thence North 00 degrees 28 minutes 57 seconds East 17,047.13 feet to the point of beginning, **LESS AND EXCEPT** all that portion of the above described tract that may lie within the boundaries of the Red River Wildlife Management Area, containing approximately **462 acres**, all as more particularly outlined on a plat on file in the Office of Mineral Resources, Department of Natural Resources. All bearings, distances and coordinates are based on Louisiana Coordinate System of 1927, (North or South Zone), where applicable.

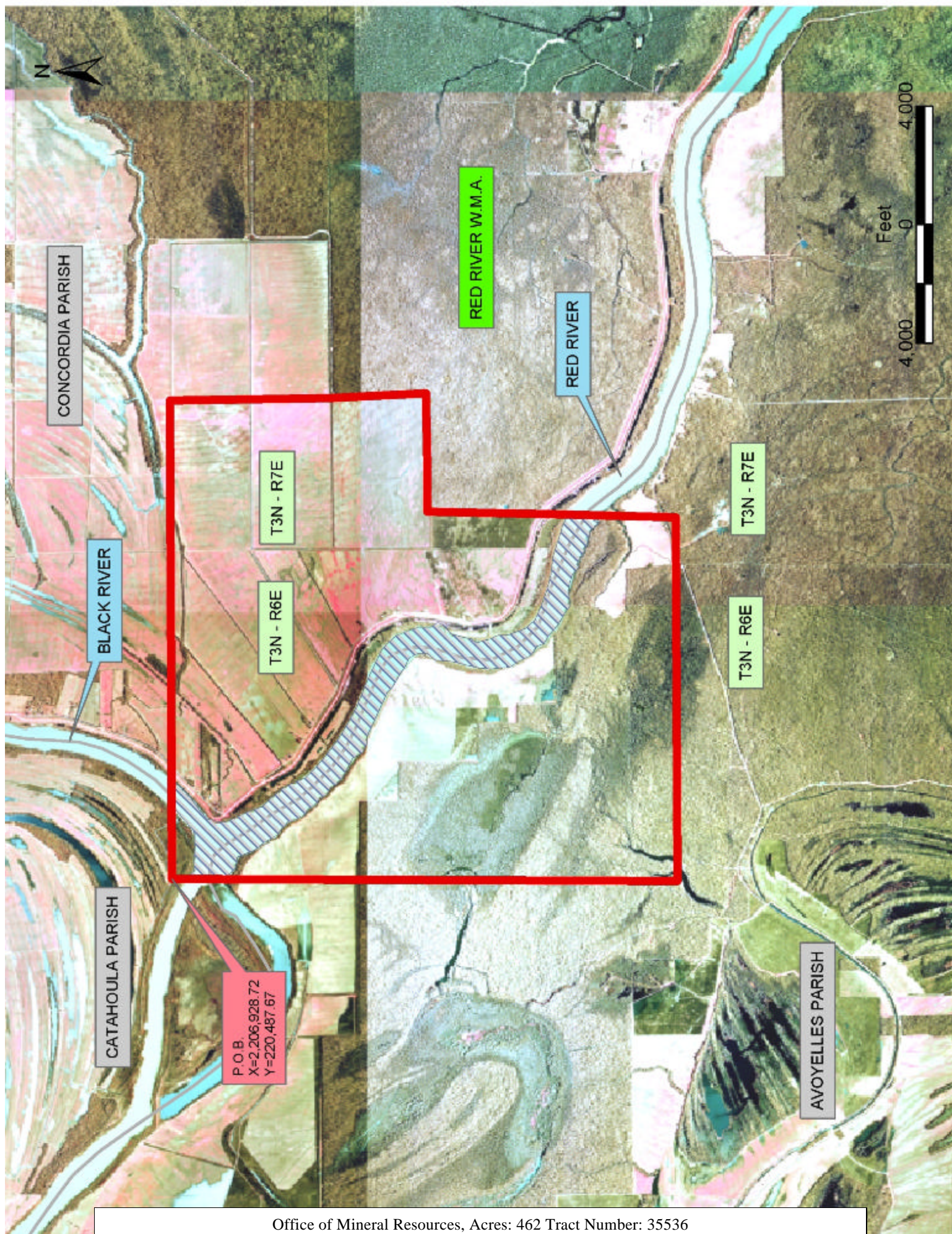
NOTE: The above description of the Tract nominated for lease has been provided and corrected, where required, exclusively by the nomination party. Any mineral lease selected from this Tract and awarded by the Louisiana State Mineral Board shall be without warranty of any kind, either express, implied, or statutory, including, but not limited to, the implied warranties of merchantability and fitness for a particular purpose. Should the mineral lease awarded by the Louisiana State Mineral

Board be subsequently modified, cancelled or abrogated due to the existence of conflicting leases, operating agreements, private claims or other future obligations or conditions which may affect all or any portion of the leased Tract, it shall not relieve the Lessee of the obligation to pay any bonus due thereon to the Louisiana State Mineral Board, nor shall the Louisiana State Mineral Board be obligated to refund any consideration paid by the Lessor prior to such modification, cancellation, or abrogation, including, but not limited to, bonuses, rentals and royalties.

Applicant: Stephen M. Jenkins, Inc.

Bidder	Cash Payment	Price / Acre	Rental	Oil	Gas	Other







**TRACT 35537 - Avoyelles and Concordia Parishes, Louisiana**

All of the lands now or formerly constituting the beds and bottoms of all water bodies of every nature and description the title of which vests in the State of Louisiana, together with all islands arising therein and other lands formed by accretion or by reliction, where allowed by law, excepting tax adjudicated lands, and not presently under mineral lease on July 9, 2003, situated in Avoyelles and Concordia Parishes, Louisiana, and more particularly described as follows: Beginning at a point on the boundary of said Red River State Wildlife Management Area having Coordinates of X = 2,233,147.47 and Y = 211,817.39; Thence along the said Red River State Wildlife Management Area boundary the following courses: South 89 degrees 14 minutes 04 seconds West 553.14 feet to a point having Coordinates of X = 2,232,594.38 and Y = 211,810.00, South 89 degrees 13 minutes 59 seconds West 281.65 feet to a point having Coordinates of X = 2,232,312.76 and Y = 211,806.23, South 88 degrees 06 minutes 44 seconds West 849.11 feet to a point having Coordinates of X = 2,231,464.11 and Y = 211,778.26, North 88 degrees 04 minutes 00 seconds West 825.76 feet to a point having Coordinates of X = 2,230,638.82 and Y = 211,806.12, South 00 degrees 23 minutes 26 seconds East 8,558.72 feet to a point having Coordinates of X = 2,230,697.17 and Y = 203,247.60, South 85 degrees 10 minutes 10 seconds East 0.71 feet to a point having Coordinates of X = 2,230,697.88 and Y = 203,247.54, South 00 degrees 15 minutes 03 seconds West 239.91 feet to a the Westernmost Southeast corner of said Red River State Wildlife Management Area having Coordinates of X = 2,230,696.83 and Y = 203,007.63; Thence Northwesterly, Southwesterly and Northwesterly approximately 3,975 feet along a Southern boundary of said Red River State Wildlife Management Area to a point on the Eastern boundary of AO 0255; Thence Northerly approximately 445 feet along the said Eastern boundary of AO 0255 to its Northeast corner; Thence Westerly approximately 1,320 feet along the Northern boundary of said AO 0255 to its Northwest corner; Thence Southerly approximately 482 feet along the Western boundary of said AO 0255 to a point, said point also being on said Southern boundary of the Red River Wildlife Management Area; Thence Northwesterly approximately 7,604 feet along said Southern boundary of the Red River State Wildlife Management Area to its Westernmost Southwest corner having Coordinates of X = 2,219,139.87 and Y = 206,549.83; Thence along the said Red River State Wildlife Management Area boundary the following courses: North 01 degrees 37 minutes 57 seconds East 601.30 feet to a point having Coordinates of X = 2,219,157.00 and Y = 207,150.89, North 01 degrees 24 minutes 19 seconds East 4,679.64 feet to a point having Coordinates of X = 2,219,271.76 and Y = 211,829.12, South 89 degrees 10 minutes 40 seconds East 188.83 feet to a point having Coordinates of X = 2,219,460.57 and Y = 211,826.41, South 89 degrees 48 minutes 39 seconds East 1,153.91 feet to a point having Coordinates of X = 2,220,614.47 and Y = 211,822.60, North 89 degrees 37 minutes 40 seconds East 1,073.22 feet to a point having Coordinates of X = 2,221,687.67 and Y = 211,829.57, North 89 degrees 18 minutes 12 seconds East 1,034.79 feet to a point having Coordinates of X = 2,222,722.38 and Y = 211,842.15, North 89 degrees 37 minutes 31 seconds East 542.83 feet to a point having Coordinates of X = 2,223,265.20 and Y = 211,845.70, North 02



degrees 37 minutes 33 seconds West 3,265.94 feet to a point having Coordinates of X = 2,223,115.57 and Y = 215,108.21, North 89 degrees 00 minutes 54 seconds East 5,235.86 feet to a point having Coordinates of X = 2,228,350.66 and Y = 215,198.22; Thence South 89 degrees 39 minutes 34 seconds East 4,771.05 feet to a point having Coordinates of X = 2,233,121.63 and Y = 215,169.86; Thence South 00 degrees 26 minutes 30 seconds East 3,352.57 feet to the point of beginning, **LESS AND EXCEPT**, if any, that portion of AO 0255, being more fully described as, A certain tract of land containing 15.57 acres, more or less, being the bed and bottom of Red River below the mean low water mark, within the Walker Sand Unit I of the Five Mile Bayou Field, Situated in Section 20, Township 3 North, Range 7 East, Avoyelles Parish, and Sections 8 and 9, Township 3 North, Range 7 East, Concordia Parish, Louisiana, that may lie within the above described tract, containing approximately **98 acres**, all as more particularly outlined on a plat on file in the Office of Mineral Resources, Department of Natural Resources. All bearings, distances and coordinates are based on Louisiana Coordinate System of 1927, (North or South Zone), where applicable.

NOTE: The above description of the Tract nominated for lease has been provided and corrected, where required, exclusively by the nomination party. Any mineral lease selected from this Tract and awarded by the Louisiana State Mineral Board shall be without warranty of any kind, either express, implied, or statutory, including, but not limited to, the implied warranties of merchantability and fitness for a particular purpose. Should the mineral lease awarded by the Louisiana State Mineral Board be subsequently modified, cancelled or abrogated due to the existence of conflicting leases, operating agreements, private claims or other future obligations or conditions which may affect all or any portion of the leased Tract, it shall not relieve the Lessee of the obligation to pay any bonus due thereon to the Louisiana State Mineral Board, nor shall the Louisiana State Mineral Board be obligated to refund any consideration paid by the Lessor prior to such modification, cancellation, or abrogation, including, but not limited to, bonuses, rentals and royalties.

NOTE: The mineral lease is located in the Red River WMA under the jurisdiction of the Louisiana Department of Wildlife and Fisheries which has promulgated rules and regulations for the protection of game and wildlife on the aforesaid Tract and, therefore, shall be subject to said rules and regulations, a copy of which shall be attached to the mineral lease. In addition to the specific rules and regulations applicable, the following shall apply regarding operations under this mineral lease:

1. No activities will be allowed without written authorization from the Louisiana Department of Wildlife and Fisheries.
2. Projects will be evaluated on a case by case basis. Modifications to projects may be required including, but not limited to, access routes, spoil placement, well sites, flow lines and other appurtenant structures.
3. Mitigation will be required to offset avoidable wetland impacts.

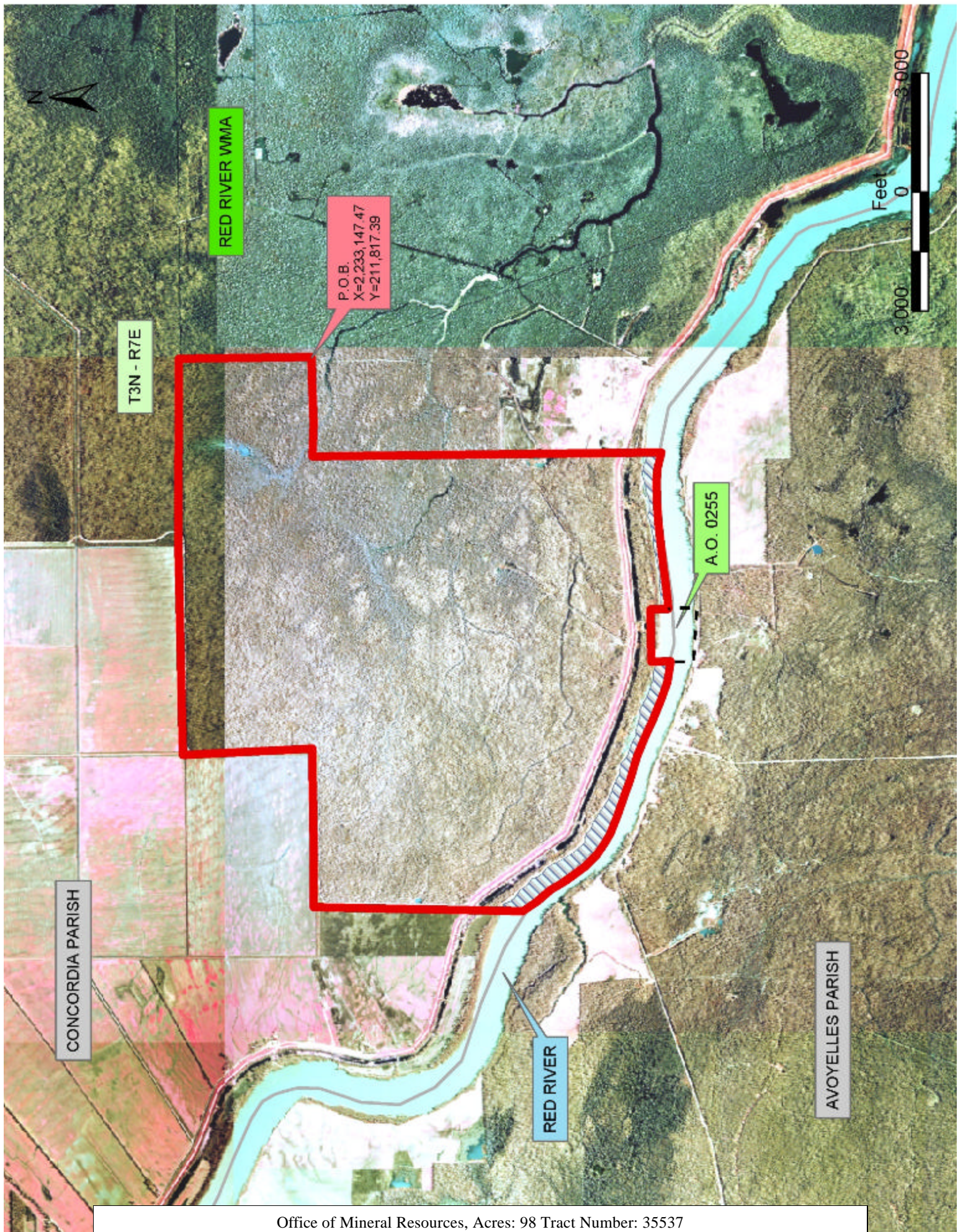
4. Removal of all structures, facilities and equipment will be required within 120 days of abandonment unless otherwise agreed to by the Louisiana Department of Wildlife and Fisheries.

5. Prior to submitting applications for wetland permits to Federal and State permitting agencies the lease holder shall coordinate project details with the Louisiana Department of Wildlife and Fisheries, Fur and Refuge Division. Contact person for the Department will be Mike Windham at (504) 568-5886.

Applicant: Stephen M. Jenkins, Inc.

Bidder	Cash Payment	Price / Acre	Rental	Oil	Gas	Other







**TRACT 35538 - Concordia Parish, Louisiana**

All of the lands now or formerly constituting the beds and bottoms of all water bodies of every nature and description the title of which vests in the State of Louisiana, together with all islands arising therein and other lands formed by accretion or by reliction, where allowed by law, excepting tax adjudicated lands, and not presently under mineral lease on July 9, 2003, situated in Concordia Parish, Louisiana, and more particularly described as follows: Beginning at a point on the boundary of the Red River State Wildlife Management Area having Coordinates of X = 2,233,147.47 and Y = 211,817.39, Thence along the boundary of said Red River State Wildlife Management Area the following courses: South 00 degrees 29 minutes 25 seconds East 2,819.32 feet to a point having Coordinates of X = 2,233,171.59 and Y = 208,998.17, South 00 degrees 28 minutes 16 seconds East 4,495.39 feet to a point having Coordinates of X = 2,233,208.56 and Y = 204,502.93, South 00 degrees 28 minutes 16 seconds East 2,395.99 feet to a point having Coordinates of X = 2,233,228.26 and Y = 202,107.02, South 00 degrees 28 minutes 13 seconds East 146.19 feet to a point having Coordinates of X = 2,233,229.46 and Y = 201,960.83, North 41 degrees 04 minutes 11 seconds West 2.79 feet to a point having Coordinates of X = 2,233,227.63 and Y = 201,962.93, South 00 degrees 15 minutes 04 seconds West 346.64 feet to a point having Coordinates of X = 2,233,226.11 and Y = 201,616.29; Thence North 48 degrees 43 minutes 40 seconds West 1,206.16 feet to a point having Coordinates of X = 2,232,319.58 and Y = 202,411.92; Thence North 51 degrees 36 minutes 19 seconds West 553.88 feet to a point having Coordinates of X = 2,231,885.48 and Y = 202,755.92; Thence North 78 degrees 09 minutes 37 seconds West 1,012.69 feet to a point having Coordinates of X = 2,230,894.33 and Y = 202,963.70; Thence North 77 degrees 27 minutes 35 seconds West 202.33 feet to a point on the boundary of the said Red River State Wildlife Management Area having Coordinates of X = 2,230,696.83 and Y = 203,007.63; Thence along the boundary of said Red River State Wildlife Management Area the following courses: North 00 degrees 15 minutes 03 seconds East 239.91 feet to a point having Coordinates of X = 2,230,697.88 and Y = 203,247.54, North 85 degrees 10 minutes 10 seconds West 0.71 feet to a point having Coordinates of X = 2,230,697.17 and Y = 203,247.60, North 00 degrees 23 minutes 26 seconds West 8,558.72 feet to a point having Coordinates of X = 2,230,638.82 and Y = 211,806.12, South 88 degrees 04 minutes 00 seconds East 825.76 feet to a point having Coordinates of X = 2,231,464.11 and Y = 211,778.26, North 88 degrees 06 minutes 44 seconds East 849.11 feet to a point having Coordinates of X = 2,232,312.76 and Y = 211,806.23, North 89 degrees 13 minutes 59 seconds East 281.65 feet to a point having Coordinates of X = 2,232,594.38 and Y = 211,810.00, North 89 degrees 14 minutes 04 seconds East 553.14 feet to the point of beginning containing approximately **36 acres**, all as more particularly outlined on a plat on file in the Office of Mineral Resources, Department of Natural Resources. All bearings, distances and coordinates are based on Louisiana Coordinate System of 1927, (North or South Zone), where applicable.



NOTE: The above description of the Tract nominated for lease has been provided and corrected, where required, exclusively by the nomination party. Any mineral lease selected from this Tract and awarded by the Louisiana State Mineral Board shall be without warranty of any kind, either express, implied, or statutory, including, but not limited to, the implied warranties of merchantability and fitness for a particular purpose. Should the mineral lease awarded by the Louisiana State Mineral Board be subsequently modified, cancelled or abrogated due to the existence of conflicting leases, operating agreements, private claims or other future obligations or conditions which may affect all or any portion of the leased Tract, it shall not relieve the Lessee of the obligation to pay any bonus due thereon to the Louisiana State Mineral Board, nor shall the Louisiana State Mineral Board be obligated to refund any consideration paid by the Lessor prior to such modification, cancellation, or abrogation, including, but not limited to, bonuses, rentals and royalties.

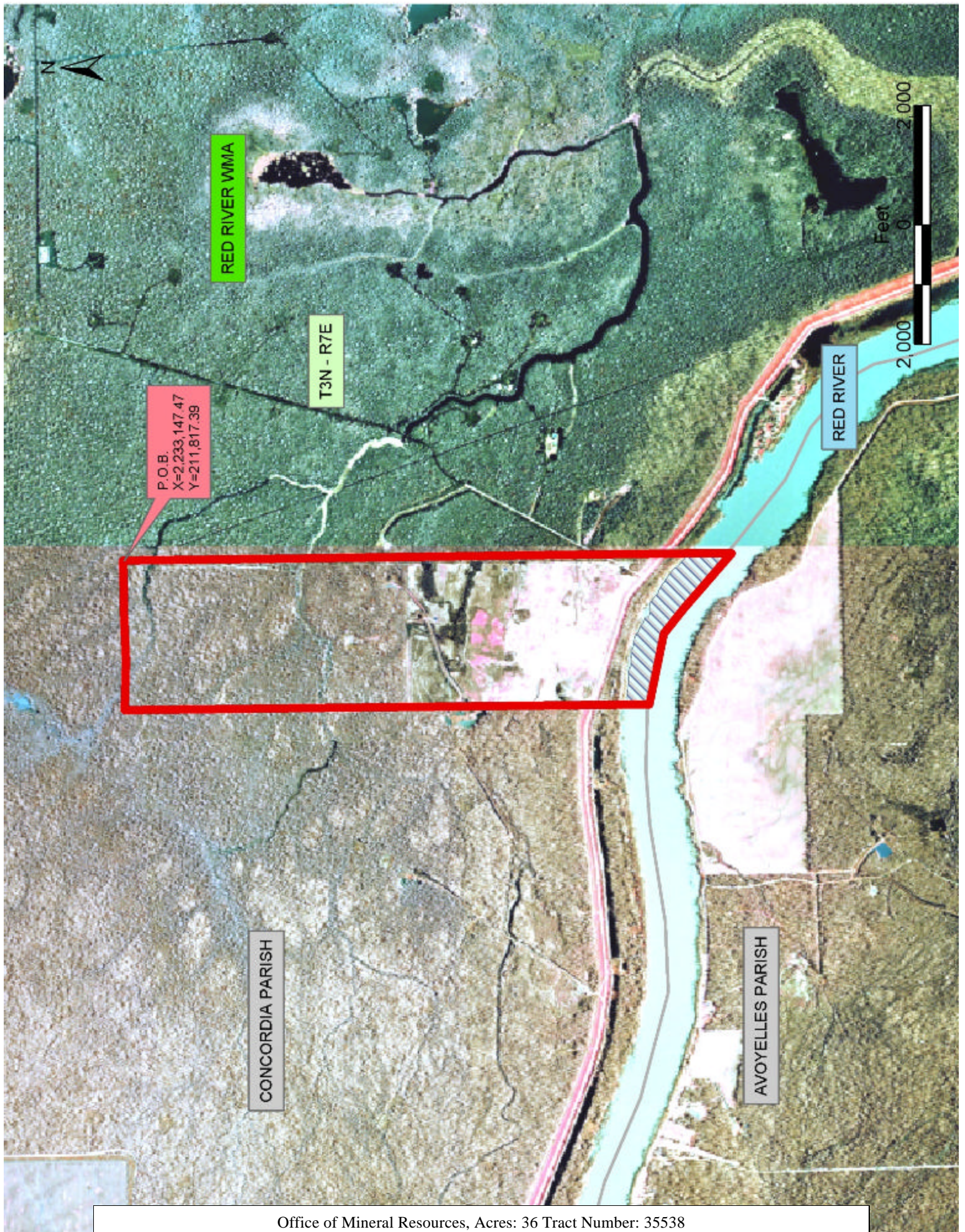
NOTE: The mineral lease is located in the Red River WMA under the jurisdiction of the Louisiana Department of Wildlife and Fisheries which has promulgated rules and regulations for the protection of game and wildlife on the aforesaid Tract and, therefore, shall be subject to said rules and regulations, a copy of which shall be attached to the mineral lease. In addition to the specific rules and regulations applicable, the following shall apply regarding operations under this mineral lease:

1. No activities will be allowed without written authorization from the Louisiana Department of Wildlife and Fisheries.
2. Projects will be evaluated on a case by case basis. Modifications to projects may be required including, but not limited to, access routes, spoil placement, well sites, flow lines and other appurtenant structures.
3. Mitigation will be required to offset avoidable wetland impacts.
4. Removal of all structures, facilities and equipment will be required within 120 days of abandonment unless otherwise agreed to by the Louisiana Department of Wildlife and Fisheries.
5. Prior to submitting applications for wetland permits to Federal and State permitting agencies the lease holder shall coordinate project details with the Louisiana Department of Wildlife and Fisheries, Fur and Refuge Division. Contact person for the Department will be Mike Windham at (504) 568-5886.

Applicant: Stephen M. Jenkins, Inc.

Bidder	Cash Payment	Price / Acre	Rental	Oil	Gas	Other







### **TRACT 35539 - Avoyelles Parish, Louisiana**

All of the lands now or formerly constituting the beds and bottoms of all water bodies of every nature and description the title of which vests in the State of Louisiana, together with all islands arising therein and other lands formed by accretion or by reliction, where allowed by law, excepting tax adjudicated lands, and not presently under mineral lease on July 9, 2003, situated in Avoyelles Parish, Louisiana, and more particularly described as follows: Beginning at a point having Coordinates of X = 2,219,051.25 and Y = 194,266.75; Thence North 9,174.20 feet to a point having Coordinates of X = 2,219,051.25 and Y = 203,440.95; Thence North 01 degrees 37 minutes 58 seconds East 3,110.14 feet to a point on the Southern boundary of the Red River State Wildlife Management Area having Coordinates of X = 2,219,139.87 and Y = 206,549.83; Thence Southeasterly approximately 7,604 feet along said Southern Boundary of the Red River Wildlife Management Area to a point on the Western boundary of AO 0255; Thence Southerly approximately 838 feet along said Western boundary of AO 0255 to its Southwest corner; Thence Easterly approximately 1,320 feet along the Southern boundary of said AO 0255 to its Southeast corner; Thence Northerly along the Eastern boundary of said AO 0255 to a point, said point also being a point on the said Southern boundary of the Red River Wildlife Management Area; Thence Northeasterly and Southeasterly approximately 3,975 feet along the said Southern boundary of the Red River State Wildlife Management Area to a point having Coordinates of X = 2,230,696.83 and Y = 203,007.63; Thence South 78 degrees 09 minutes 37 seconds East 1,012.69 feet to a point having Coordinates of X = 2,231,885.48 and Y = 202,755.92; Thence South 51 degrees 36 minutes 19 seconds East 553.88 feet to a point having Coordinates of X = 2,232,319.58 and Y = 202,411.92; Thence South 48 degrees 43 minutes 40 seconds East 1,206.16 feet to a point having Coordinates of X = 2,233,226.11 and Y = 201,616.29; Thence South 00 degrees 26 minutes 30 seconds East 7,349.76 feet to a point having Coordinates of X = 2,233,282.76 and Y = 194,266.75; Thence West 14,231.51 feet to the point of beginning, **LESS AND EXCEPT**, if any, that portion of AO 0255 that may lie within the above described tract, containing approximately **170 acres**, all as more particularly outlined on a plat on file in the Office of Mineral Resources, Department of Natural Resources. All bearings, distances and coordinates are based on Louisiana Coordinate System of 1927, (North or South Zone), where applicable.

NOTE: The above description of the Tract nominated for lease has been provided and corrected, where required, exclusively by the nomination party. Any mineral lease selected from this Tract and awarded by the Louisiana State Mineral Board shall be without warranty of any kind, either express, implied, or statutory, including, but not limited to, the implied warranties of merchantability and fitness for a particular purpose. Should the mineral lease awarded by the Louisiana State Mineral Board be subsequently modified, cancelled or abrogated due to the existence of conflicting leases, operating agreements, private claims or other future obligations or conditions which may affect all or any portion



of the leased Tract, it shall not relieve the Lessee of the obligation to pay any bonus due thereon to the Louisiana State Mineral Board, nor shall the Louisiana State Mineral Board be obligated to refund any consideration paid by the Lessor prior to such modification, cancellation, or abrogation, including, but not limited to, bonuses, rentals and royalties.

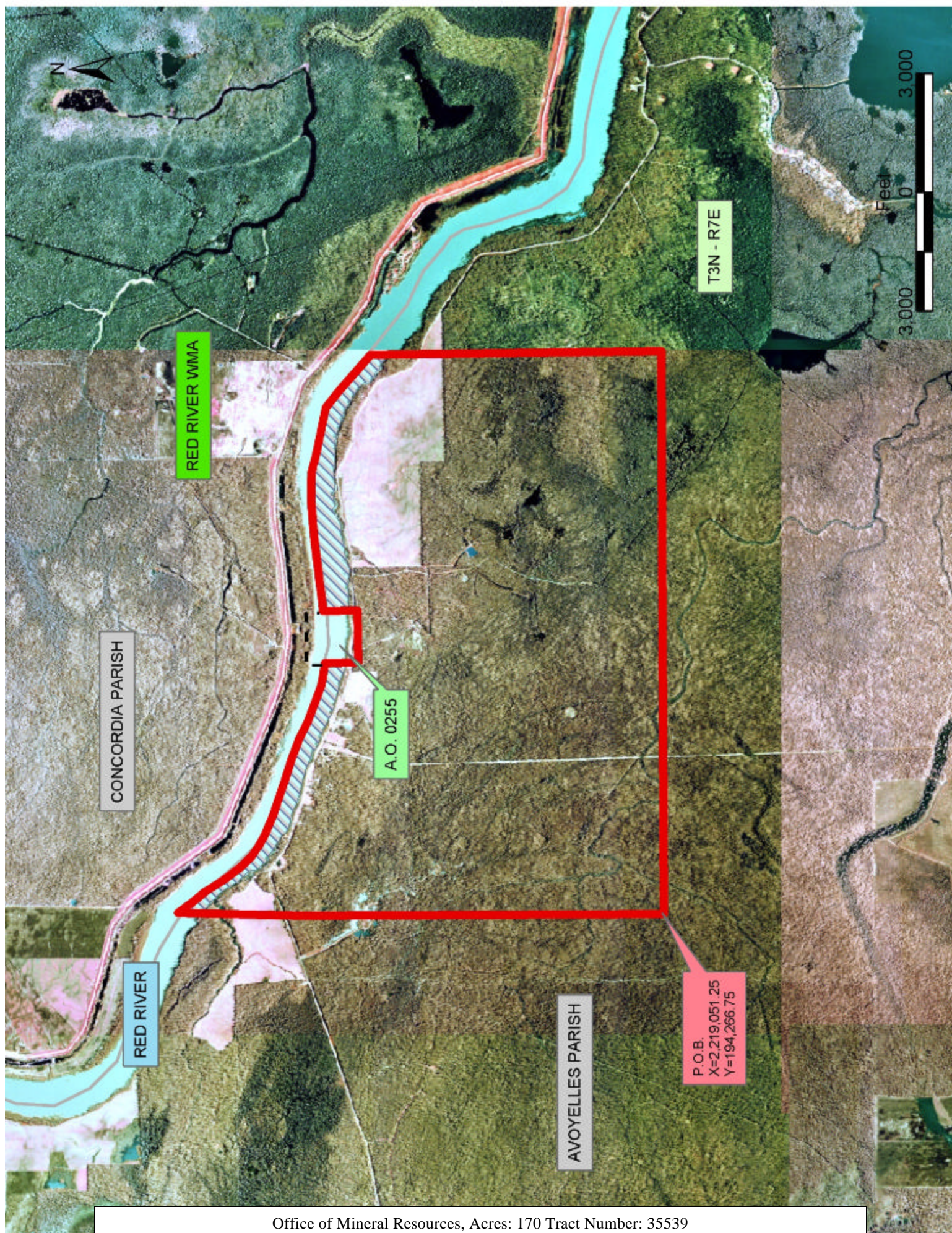
NOTE: The mineral lease is located in the Red River WMA under the jurisdiction of the Louisiana Department of Wildlife and Fisheries which has promulgated rules and regulations for the protection of game and wildlife on the aforesaid Tract and, therefore, shall be subject to said rules and regulations, a copy of which shall be attached to the mineral lease. In addition to the specific rules and regulations applicable, the following shall apply regarding operations under this mineral lease:

1. No activities will be allowed without written authorization from the Louisiana Department of Wildlife and Fisheries.
2. Projects will be evaluated on a case by case basis. Modifications to projects may be required including, but not limited to, access routes, spoil placement, well sites, flow lines and other appurtenant structures.
3. Mitigation will be required to offset avoidable wetland impacts.
4. Removal of all structures, facilities and equipment will be required within 120 days of abandonment unless otherwise agreed to by the Louisiana Department of Wildlife and Fisheries.
5. Prior to submitting applications for wetland permits to Federal and State permitting agencies the lease holder shall coordinate project details with the Louisiana Department of Wildlife and Fisheries, Fur and Refuge Division. Contact person for the Department will be Mike Windham at (504) 568-5886.

Applicant: Stephen M. Jenkins, Inc.

Bidder	Cash Payment	Price / Acre	Rental	Oil	Gas	Other







**TRACT 35540 - Calcasieu Parish, Louisiana**

All of the lands now or formerly constituting the beds and bottoms of all water bodies of every nature and description the title of which vests in the State of Louisiana, together with all islands arising therein and other lands formed by accretion or by reliction, where allowed by law, excepting tax adjudicated lands, and not presently under mineral lease on July 9, 2003, situated in Calcasieu Parish, Louisiana, and more particularly described as follows: Beginning at a point having Coordinates of X = 1,251,325.00 and Y = 601,700.00; thence South 3,250.00 feet to a point having Coordinates of X = 1,251,325.00 and Y = 598,450.00; thence West 5,425.00 feet to a point having Coordinates of X = 1,245,900.00 and Y = 598,450.00; thence North 3,250.00 feet to a point having Coordinates of X = 1,245,900.00 and Y = 601,700.00; thence East 5,425.00 feet to the point of beginning, **LESS AND EXCEPT** that portion of State Lease No. 13420 that may lie within the above described tract, containing approximately **32 acres, LESS AND EXCEPT** that portion thereof, if any, located West of the boundary line between the States of Texas and Louisiana as determined by the report of the Special Master and adjudicated by the Supreme Court of the United States in litigation styled **Texas v. Louisiana, et al No. 36 Original**, or as otherwise approved by said court, all as more particularly outlined on a plat on file in the Office of Mineral Resources, Department of Natural Resources. All bearings, distances and coordinates are based on Louisiana Coordinate System of 1927, (North or South Zone), where applicable.

NOTE: The above description of the Tract nominated for lease has been provided and corrected, where required, exclusively by the nomination party. Any mineral lease selected from this Tract and awarded by the Louisiana State Mineral Board shall be without warranty of any kind, either express, implied, or statutory, including, but not limited to, the implied warranties of merchantability and fitness for a particular purpose. Should the mineral lease awarded by the Louisiana State Mineral Board be subsequently modified, cancelled or abrogated due to the existence of conflicting leases, operating agreements, private claims or other future obligations or conditions which may affect all or any portion of the leased Tract, it shall not relieve the Lessee of the obligation to pay any bonus due thereon to the Louisiana State Mineral Board, nor shall the Louisiana State Mineral Board be obligated to refund any consideration paid by the Lessor prior to such modification, cancellation, or abrogation, including, but not limited to, bonuses, rentals and royalties.

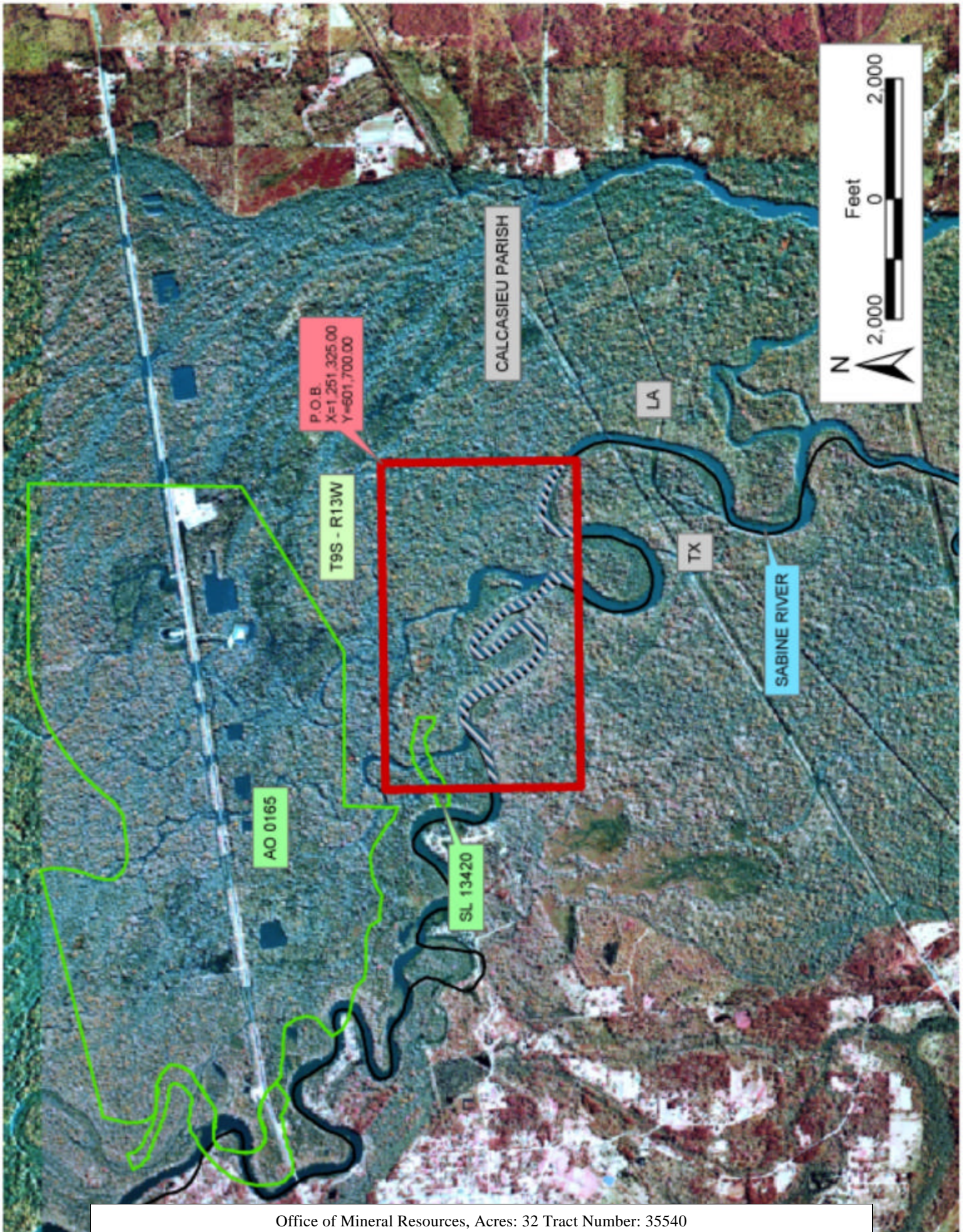
NOTE: The above described tract may be in the vicinity of existing shell reefs where drilling and dredging operations must be conducted in strict conformity with the regulations adopted by the Louisiana Department of Wildlife and Fisheries and/or the U.S. Corps of Engineers, U.S. Army.

Applicant: Jerel Exploration, Inc.



Bidder	Cash Payment	Price / Acre	Rental	Oil	Gas	Other







#### **TRACT 35541 - Cameron Parish, Louisiana**

All of the lands now or formerly constituting the beds and bottoms of all water bodies of every nature and description the title of which vests in the State of Louisiana, together with all islands arising therein and other lands formed by accretion or by reliction, where allowed by law, excepting tax adjudicated lands, and not presently under mineral lease on July 9, 2003, situated in Cameron Parish, Louisiana, and more particularly described as follows: Beginning at the Southwest corner of State Lease No. 15223, as amended, having Coordinates of X = 1,519,620.00 and Y = 486,180.65; thence South 89 degrees 23 minutes 02 seconds East along the South line of said State Lease No. 15223, a distance of 3,109.48 feet to a point at the Southeast corner of said State Lease No. 15223 having Coordinates of X = 1,522,729.30 and Y = 486,147.22; thence North 00 degrees 44 minutes 49 seconds East along the East line of said State Lease No. 15223, a distance of 3,409.21 feet to a point at the Northeast corner of said State Lease No. 15223 having Coordinates of X = 1,522,773.75 and Y = 489,556.14; thence North 50 degrees 40 minutes 01 seconds West along a Northeasterly line of said State Lease No. 15223, a distance of 592.20 feet to a point at the Northeast corner of said State Lease No. 15223 having Coordinates of X = 1,522,315.70 and Y = 489,931.49; thence North 1,568.51 feet to a point having Coordinates of X = 1,522,315.70 and Y = 491,500.00; thence East 5,366.65 feet to a point having Coordinates of X = 1,527,682.35 and Y = 491,500.00; thence South 5,319.35 feet to a point having Coordinates of X = 1,527,682.35 and Y = 486,180.65; thence East 2,317.65 feet to a point having Coordinates of X = 1,530,000.00 and Y = 486,180.65; thence South 8,180.65 feet to a point having Coordinates of X = 1,530,000.00 and Y = 478,000.00; thence West 10,380.00 feet to a point having Coordinates of X = 1,519,620.00 and Y = 478,000.00; thence North 8,180.65 feet to the point of beginning, containing approximately **540.8 acres**, all as more particularly outlined on a plat on file in the Office of Mineral Resources, Department of Natural Resources. All bearings, distances and coordinates are based on Louisiana Coordinate System of 1927, (North or South Zone), where applicable.

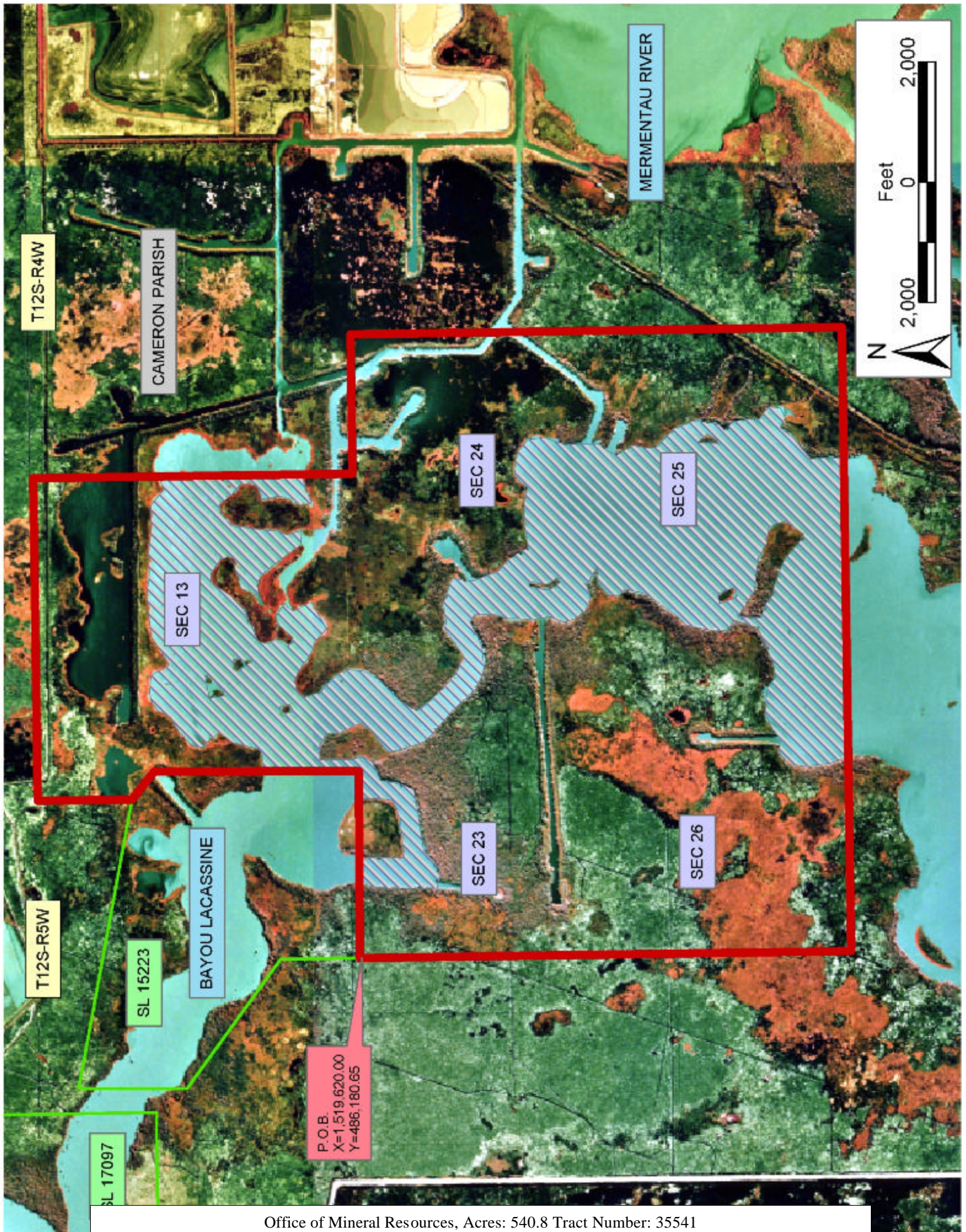
NOTE: The above description of the Tract nominated for lease has been provided and corrected, where required, exclusively by the nomination party. Any mineral lease selected from this Tract and awarded by the Louisiana State Mineral Board shall be without warranty of any kind, either express, implied, or statutory, including, but not limited to, the implied warranties of merchantability and fitness for a particular purpose. Should the mineral lease awarded by the Louisiana State Mineral Board be subsequently modified, cancelled or abrogated due to the existence of conflicting leases, operating agreements, private claims or other future obligations or conditions which may affect all or any portion of the leased Tract, it shall not relieve the Lessee of the obligation to pay any bonus due thereon to the Louisiana State Mineral Board, nor shall the Louisiana State Mineral Board be obligated to refund any consideration paid by the Lessor prior to such modification, cancellation, or abrogation, including, but not limited to, bonuses, rentals and royalties.



Applicant: B.R. Higgins

Bidder	Cash Payment	Price / Acre	Rental	Oil	Gas	Other







#### **TRACT 35542 - Iberia Parish, Louisiana**

All of the lands now or formerly constituting the beds and bottoms of all water bodies of every nature and description the title of which vests in the State of Louisiana, together with all islands arising therein and other lands formed by accretion or by reliction, where allowed by law, excepting tax adjudicated lands, and not presently under mineral lease on July 9, 2003, situated in Iberia Parish, Louisiana, and more particularly described as follows: Beginning at a point having Coordinates of X = 1,982,498.00 and Y = 484,778.00; thence East 3,248.00 feet to a point having Coordinates of X = 1,985,746.00 and Y = 484,778.00; thence South 2,610.00 feet to a point having Coordinates of X = 1,985,746.00 and Y = 482,168.00; thence West approximately 481 feet to a point on the Eastern boundary of AO 0003; thence Northerly, Westerly, Southerly, Westerly and Southerly on the boundary of said AO 0003 to a point of intersection with an East West line having a Coordinate of Y = 480,580.00; thence West approximately 778 feet to a point having Coordinates of X = 1,982,498.00 and Y = 480,580.00; thence North 4,198.00 feet to the point of beginning, containing approximately **13 acres**, all as more particularly outlined on a plat on file in the Office of Mineral Resources, Department of Natural Resources. All bearings, distances and coordinates are based on Louisiana Coordinate System of 1927, (North or South Zone), where applicable.

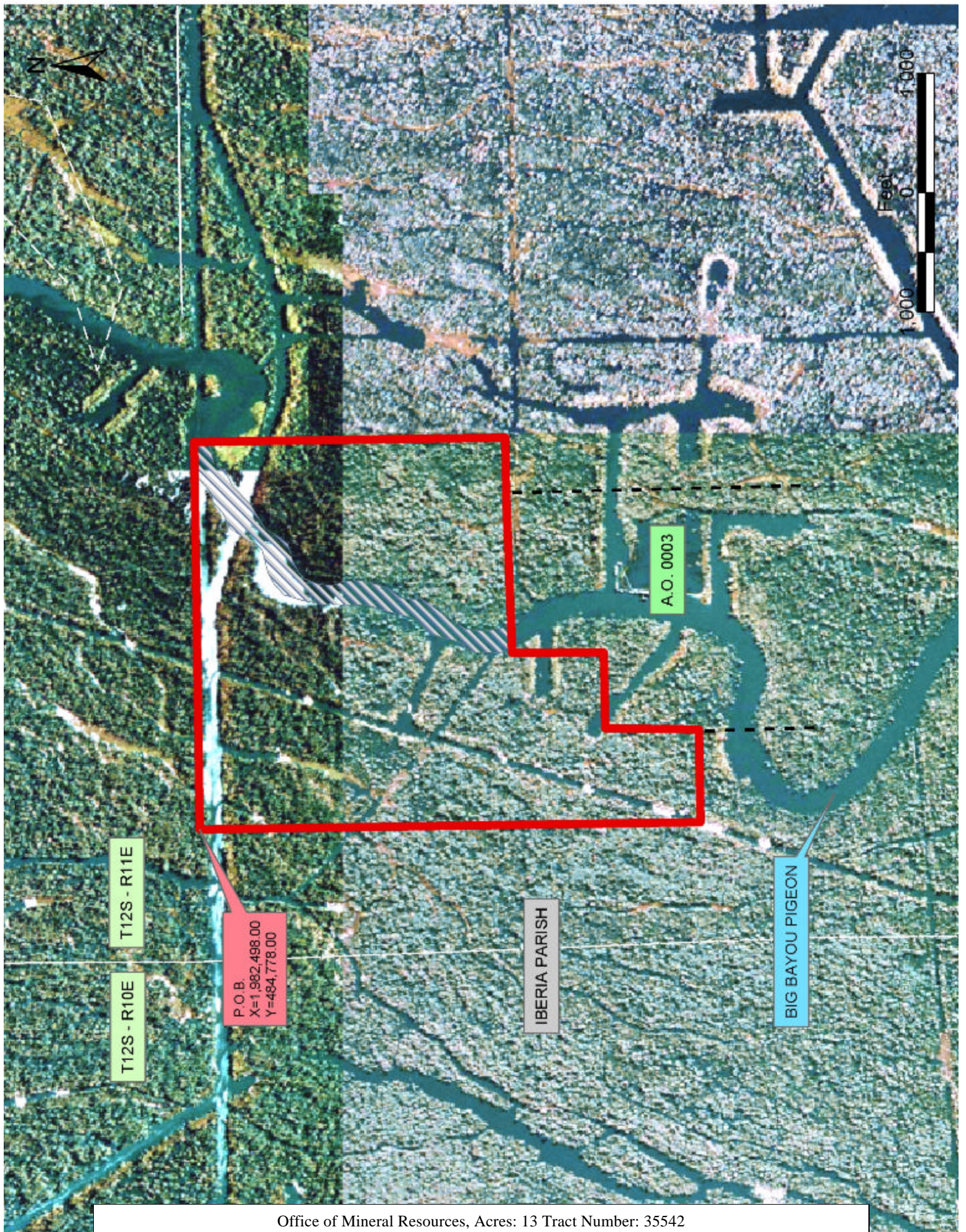
NOTE: The above description of the Tract nominated for lease has been provided and corrected, where required, exclusively by the nomination party. Any mineral lease selected from this Tract and awarded by the Louisiana State Mineral Board shall be without warranty of any kind, either express, implied, or statutory, including, but not limited to, the implied warranties of merchantability and fitness for a particular purpose. Should the mineral lease awarded by the Louisiana State Mineral Board be subsequently modified, cancelled or abrogated due to the existence of conflicting leases, operating agreements, private claims or other future obligations or conditions which may affect all or any portion of the leased Tract, it shall not relieve the Lessee of the obligation to pay any bonus due thereon to the Louisiana State Mineral Board, nor shall the Louisiana State Mineral Board be obligated to refund any consideration paid by the Lessor prior to such modification, cancellation, or abrogation, including, but not limited to, bonuses, rentals and royalties.

NOTE: The State of Louisiana does hereby reserve, and this lease shall be subject to, the imprescriptible right of surface use in the nature of a servitude in favor of the Department of Natural Resources, including its Offices and Commissions, for the sole purpose of implementing, constructing, servicing and maintaining approved coastal zone management and/or restoration projects. Utilization of any and all rights derived under this lease by the mineral lessee, its agents, successors or assigns, shall not interfere with nor hinder the reasonable surface use by the Department of Natural Resources, its Offices or Commissions, as herein above reserved.

Applicant: Magnolia Energy Services, LLC

Bidder	Cash Payment	Price / Acre	Rental	Oil	Gas	Other







**TRACT 35543 - Cameron Parish, Louisiana**

All of the lands now or formerly constituting the beds and bottoms of all water bodies of every nature and description the title of which vests in the State of Louisiana, together with all islands arising therein and other lands formed by accretion or by reliction, where allowed by law, excepting tax adjudicated lands, and not presently under mineral lease on July 9, 2003, situated in Cameron Parish, Louisiana, and more particularly described as follows: Beginning at a point having Coordinates of X = 1,533,102.00 and Y = 486,007.39; thence East 10,768.00 feet to a point on the West line of State Lease No. 17224 having Coordinates of X = 1,543,870.00 and Y = 486,007.39; thence South 1,307.39 feet along the West line of said State Lease No. 17224 to the Southwest corner of said State Lease No. 17224 having Coordinates of X = 1,543,870.00 and Y = 484,700.00; thence South 9,375.19 feet to a point having Coordinates of X = 1,543,870.00 and Y = 475,324.81; thence West 10,768.00 feet to a point having Coordinates of X = 1,533,102.00 and Y = 475,324.81; thence North 10,682.58 feet to the point of beginning, containing approximately **1,294.2 acres**, all as more particularly outlined on a plat on file in the Office of Mineral Resources, Department of Natural Resources. All bearings, distances and coordinates are based on Louisiana Coordinate System of 1927, (North or South Zone), where applicable.

NOTE: The above description of the Tract nominated for lease has been provided and corrected, where required, exclusively by the nomination party. Any mineral lease selected from this Tract and awarded by the Louisiana State Mineral Board shall be without warranty of any kind, either express, implied, or statutory, including, but not limited to, the implied warranties of merchantability and fitness for a particular purpose. Should the mineral lease awarded by the Louisiana State Mineral Board be subsequently modified, cancelled or abrogated due to the existence of conflicting leases, operating agreements, private claims or other future obligations or conditions which may affect all or any portion of the leased Tract, it shall not relieve the Lessee of the obligation to pay any bonus due thereon to the Louisiana State Mineral Board, nor shall the Louisiana State Mineral Board be obligated to refund any consideration paid by the Lessor prior to such modification, cancellation, or abrogation, including, but not limited to, bonuses, rentals and royalties.

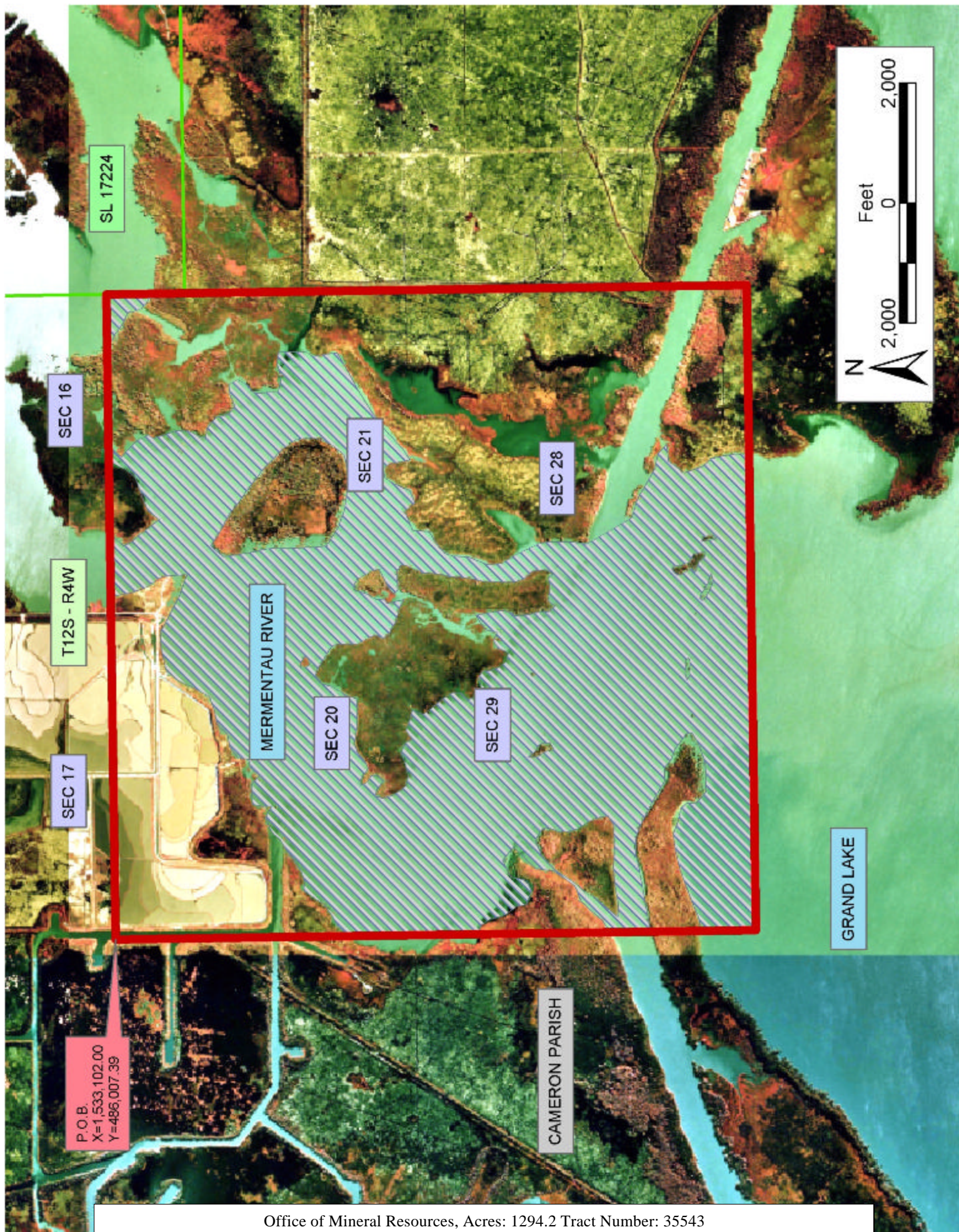
NOTE: The State of Louisiana does hereby reserve, and this lease shall be subject to, the imprescriptible right of surface use in the nature of a servitude in favor of the Department of Natural Resources, including its Offices and Commissions, for the sole purpose of implementing, constructing, servicing and maintaining approved coastal zone management and/or restoration projects. Utilization of any and all rights derived under this lease by the mineral lessee, its agents, successors or assigns, shall not interfere with nor hinder the reasonable surface use by the Department of Natural Resources, its Offices or Commissions, as herein above reserved.



Applicant: B.R. Higgins

Bidder	Cash Payment	Price / Acre	Rental	Oil	Gas	Other







#### **TRACT 35544 - Iberia Parish, Louisiana**

All of the lands now or formerly constituting the beds and bottoms of all water bodies of every nature and description the title of which vests in the State of Louisiana, together with all islands arising therein and other lands formed by accretion or by reliction, where allowed by law, excepting tax adjudicated lands, and not presently under mineral lease on July 9, 2003, situated in Iberia Parish, Louisiana, and more particularly described as follows: Beginning at a point having Coordinates of X = 1,982,498.00 and Y = 477,626.00; thence North 2,954.00 feet to a point having Coordinates of X = 1,982,498.00 and Y = 480,580.00; thence East approximately 779 feet to a point on the Western boundary of AO 0003; thence Southerly, Easterly, Southerly, and Easterly on the boundary of said AO 0003 to a point of intersection with a North South line having a Coordinate of X = 1,985,032.00; thence South approximately 1,862 feet to a point having Coordinates of X = 1,985,032.00 and Y = 477,626.00; thence West 2,534.00 feet to the point of beginning, containing approximately **17 acres**, all as more particularly outlined on a plat on file in the Office of Mineral Resources, Department of Natural Resources. All bearings, distances and coordinates are based on Louisiana Coordinate System of 1927, (North or South Zone), where applicable.

NOTE: The above description of the Tract nominated for lease has been provided and corrected, where required, exclusively by the nomination party. Any mineral lease selected from this Tract and awarded by the Louisiana State Mineral Board shall be without warranty of any kind, either express, implied, or statutory, including, but not limited to, the implied warranties of merchantability and fitness for a particular purpose. Should the mineral lease awarded by the Louisiana State Mineral Board be subsequently modified, cancelled or abrogated due to the existence of conflicting leases, operating agreements, private claims or other future obligations or conditions which may affect all or any portion of the leased Tract, it shall not relieve the Lessee of the obligation to pay any bonus due thereon to the Louisiana State Mineral Board, nor shall the Louisiana State Mineral Board be obligated to refund any consideration paid by the Lessor prior to such modification, cancellation, or abrogation, including, but not limited to, bonuses, rentals and royalties.

NOTE: The State of Louisiana does hereby reserve, and this lease shall be subject to, the imprescriptible right of surface use in the nature of a servitude in favor of the Department of Natural Resources, including its Offices and Commissions, for the sole purpose of implementing, constructing, servicing and maintaining approved coastal zone management and/or restoration projects. Utilization of any and all rights derived under this lease by the mineral lessee, its agents, successors or assigns, shall not interfere with nor hinder the reasonable surface use by the Department of Natural Resources, its Offices or Commissions, as herein above reserved.

Applicant: Magnolia Energy Services, LLC

Bidder	Cash Payment	Price / Acre	Rental	Oil	Gas	Other



