

**TRACT 34723 - Terrebonne Parish, Louisiana**

All of the lands now or formerly constituting the beds and bottoms of all water bodies of every nature and description and all islands and other lands formed by accretion or reliction, except tax lands, owned by and not under mineral lease from the State of Louisiana on July 10, 2002, situated in Terrebonne Parish, Louisiana, within the following described boundaries: Beginning at a point having coordinates of X = 2,251,882.81 and Y = 253,120.00, said point being the Point of Beginning; thence South 01 degrees 16 minutes 16 seconds East a distance of 4,147.59 feet to a point having coordinates of X = 2,251,974.82 and Y = 248,973.43; thence South 89 degrees 21 minutes 18 seconds West a distance of 14,816.28 feet to a point having coordinates of X = 2,237,159.47 and Y = 248,806.64; thence North 01 degrees 12 minutes 00 seconds West a distance of 2,497.00 feet to a point having coordinates of X = 2,237,107.18 and Y = 251,303.09; thence East a distance of 6,569.62 feet to a point having coordinates of X = 2,243,676.80 and Y = 251,303.09; thence North a distance of 1,816.91 feet to a point having coordinates of X = 2,243,676.80 and Y = 253,120.00; thence East a distance of 8,206.01 feet to the point of beginning, **LESS AND EXCEPT**, if any, that portion of a Compromise Area between the State Mineral Board of Louisiana and FINA Oil And Chemical Company that may lie within the above described tract containing approximately **547 acres**, as shown outlined on a plat on file in the Office of Mineral Resources, Department of Natural Resources. All bearings, distances and coordinates are based on Louisiana Coordinate System of 1927 (South Zone).

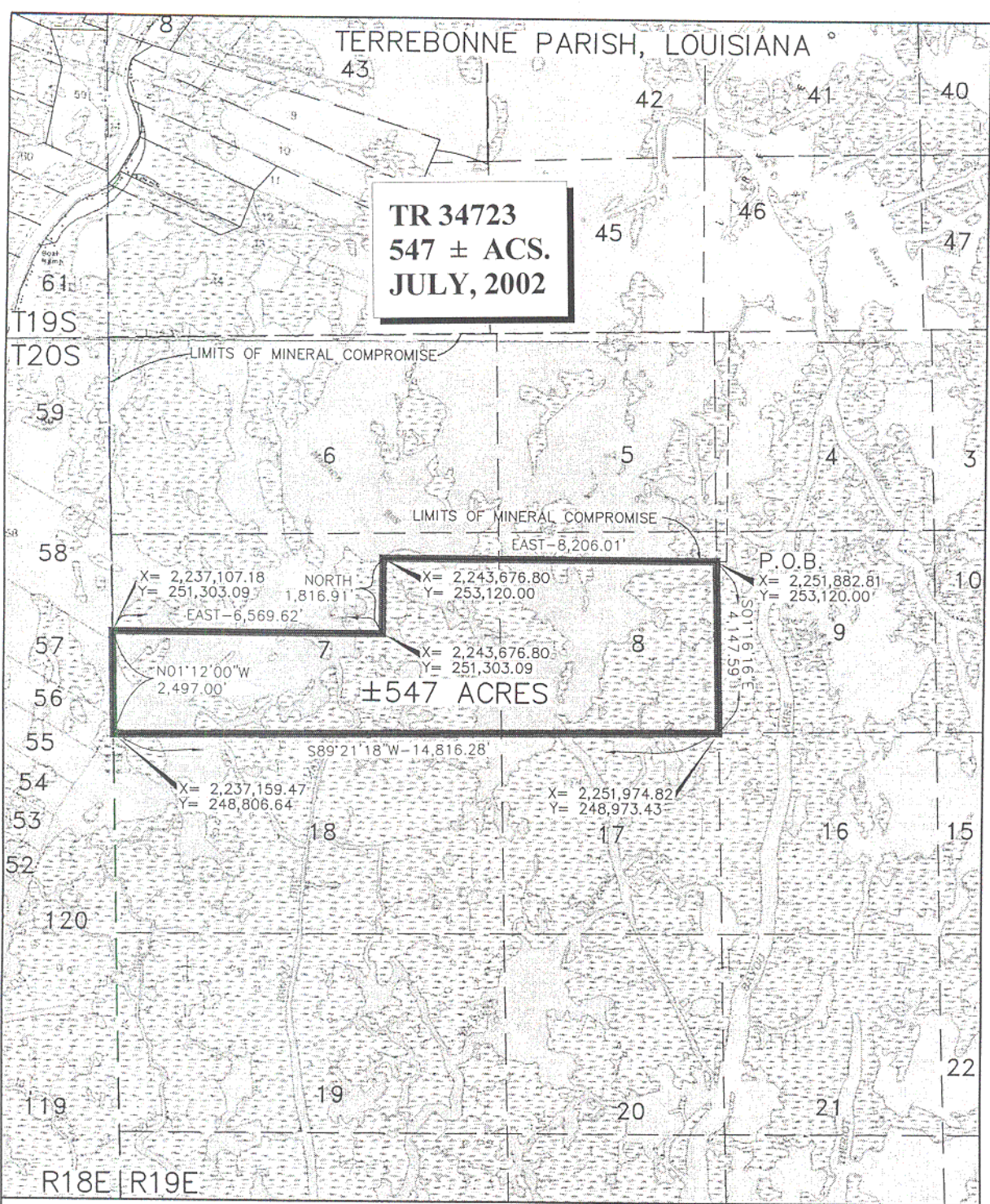
NOTE: The Department of Wildlife and Fisheries has designated certain areas in the coastal waters of the State of Louisiana as Oyster Seed Bed Areas. The exact location of those Seed Bed Areas must be obtained from Wildlife and Fisheries and any work done under an oil, gas and other liquid or gaseous mineral lease from the State of Louisiana must be conducted in conformity with the rules and regulations promulgated by the said Department of Wildlife and Fisheries for Oyster Seed Bed Areas.

NOTE: The State of Louisiana does hereby reserve, and this lease shall be subject to, the imprescriptible right of surface use in the nature of a servitude in favor of the Department of Natural Resources and/or the Louisiana Department of Wildlife and Fisheries, including its Offices and Commissions, for the sole purpose of implementing, constructing, servicing and maintaining approved coastal zone management and/or restoration projects. Utilization of any and all rights derived under this lease by the mineral lessee, its agents, successors or assigns, shall not interfere with nor hinder the reasonable surface use by the Department of Natural Resources and/or the Louisiana Department of Wildlife and Fisheries, its Offices or Commissions, as hereinabove reserved.

Applicant: Petroleum Land Resources, Inc.

TERREBONNE PARISH, LOUISIANA

TR 34723  
547 ± ACS.  
JULY, 2002



LOUISIANA COORDINATE SYSTEM (SOUTH ZONE)  
(1983 DATUM)

MAP NOT TO SCALE

**TRACT 34724 - Terrebonne Parish, Louisiana**

All of the lands now or formerly constituting the beds and bottoms of all water bodies of every nature and description and all islands and other lands formed by accretion or reliction, except tax lands, owned by and not under mineral lease from the State of Louisiana on July 10, 2002, situated in Terrebonne Parish, Louisiana, within the following described boundaries: Beginning at a point having coordinates of X = 2,251,758.69 and Y = 258,713.79, said point being the Point of Beginning; thence South 01 degrees 16 minutes 16 seconds East a distance of 5,595.17 feet to a point having coordinates of X = 2,251,882.81 and Y = 253,120.00; thence West a distance of 8,206.01 feet to a point having coordinates of X = 2,243,676.80 and Y = 253,120.00; thence South a distance of 1,816.91 feet to a point having coordinates of X = 2,243,676.80 and Y = 251,303.09; thence West a distance of 6,569.62 feet to a point having coordinates of X = 2,237,107.18 and Y = 251,303.09; thence North 01 degree 12 minutes 00 seconds West a distance of 7,117.66 feet to a point having coordinates of X = 2,236,958.12 and Y = 258,419.21; thence North 88 degrees 51 minutes 35 seconds East a distance of 14,803.50 feet to the point of beginning, **LESS AND EXCEPT**, if any, that portion of State Lease No. 328, as amended, that may lie within the above described tract and **LESS AND EXCEPT** those portions of State Lease No. 17234 and No. 14211, as amended, that lie within the above described tract, containing approximately **700 acres**, as shown outlined on a plat on file in the Office of Mineral Resources, Department of Natural Resources. All bearings, distances and coordinates are based on Louisiana Coordinate System of 1927 (South Zone).

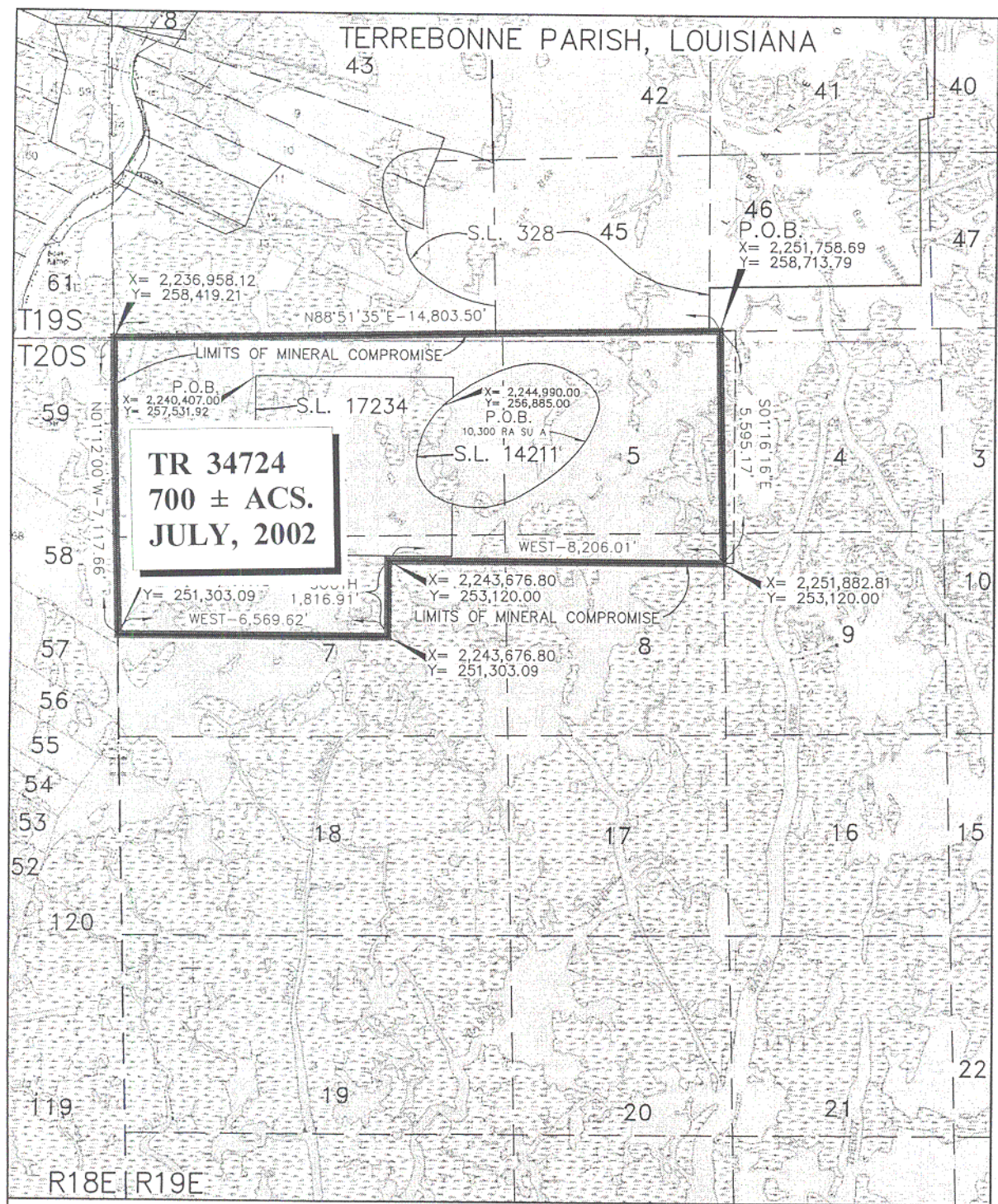
NOTE: Pursuant to a Compromise Agreement entered into by and between the State of Louisiana and FINA Oil and Chemical Company effective April 1, 1993, all production derived from and ascribed to water bottoms within this tract shall be allocable in the following proportions, to-wit: State of Louisiana - 67.72% and FINA - 32.28%. The Compromise Agreement in question in no way abrogates or diminishes the title claim to said property by the State of Louisiana, but rather pertains only to allocation of production from said property under a State of Louisiana mineral lease on the water bottoms within said Tract.

NOTE: The Department of Wildlife and Fisheries has designated certain areas in the coastal waters of the State of Louisiana as Oyster Seed Bed Areas. The exact location of those Seed Bed Areas must be obtained from Wildlife and Fisheries and any work done under an oil, gas and other liquid or gaseous mineral lease from the State of Louisiana must be conducted in conformity with the rules and regulations promulgated by the said Department of Wildlife and Fisheries for Oyster Seed Bed Areas.

NOTE: The State of Louisiana does hereby reserve, and this lease shall be subject to, the imprescriptible right of surface use in the nature of a servitude in favor of the Department of Natural Resources and/or the Louisiana Department of Wildlife and Fisheries, including its Offices and Commissions, for the sole purpose of implementing, constructing, servicing and maintaining approved coastal zone management and/or restoration projects. Utilization of any and all rights derived under this lease by the mineral lessee, its agents, successors or assigns, shall not interfere with nor hinder the reasonable surface use by the Department of Natural Resources and/or the Louisiana Department of Wildlife and Fisheries, its Offices or Commissions, as hereinabove reserved.

Applicant: Petroleum Land Resources, Inc.





**TR 34724**  
**700 ± ACS.**  
**JULY, 2002**

MAP NOT TO SCALE

LOUISIANA COORDINATE SYSTEM (SOUTH ZONE)  
 (1982 DATUM)