

TRACT 34574 - Red River Parish, Louisiana

All of the lands now or formerly constituting the beds and bottoms of all water bodies of every nature and description and all islands and other lands formed by accretion or reliction, except tax lands, owned by and not under mineral lease from the State of Louisiana on July 10, 2002, situated in Red River Parish, Louisiana, within the following described boundaries: Beginning at a point having Coordinates of X = 1,713,910 and Y = 545,489, thence North 89 degrees 54 minutes 48 seconds East 5,280.01 feet to a point having Coordinates of X = 1,719,190 and Y = 545,497; thence North 89 degrees 58 minutes 42 seconds East 5,280.00 feet to a point having Coordinates of X = 1,724,470 and Y = 545,499; thence South 00 degrees 00 minutes 00 seconds West 5,356.00 feet to a point having Coordinates of X = 1,724,470 and Y = 540,143; thence South 00 degrees 00 minutes 00 seconds West 5,362.00 feet to a point having Coordinates of X = 1,724,470 and Y = 534,781; thence South 00 degrees 00 minutes 00 seconds West 5,313.00 feet to a point having Coordinates of X = 1,724,470 and Y = 529,468; thence North 89 degrees 03 minutes 21 seconds West 5,280.72 feet to a point having Coordinates of X = 1,719,190 and Y = 529,555; thence North 89 degrees 41 minutes 46 seconds West 5,280.07 feet to a point having Coordinates of X = 1,713,910 and Y = 529,583; thence North 00 degrees 00 minutes 00 seconds East 5,280.00 feet to a point having Coordinates of X = 1,713,910 and Y = 534,863, thence North 00 degrees 00 minutes 00 seconds East 5,280 feet to a point having Coordinates of X = 1,713,910 and Y = 540,143; thence North 00 degrees 00 minutes 00 seconds East 5,346.00 feet to the point of beginning, containing approximately **15 acres**, as shown outlined on a plat on file in the Office of Mineral Resources, Department of Natural Resources, as provided by the applicant. All bearings, distances and coordinates are based on Louisiana Coordinate System of 1927 (South Zone).

NOTE: The above description of the tract nominated for lease has been provided exclusively by the party nominating the tract for lease.

Maps depicting the nominated tract, containing the bearings, distances and coordinates of the nominated tract based on the Louisiana Coordinate System of 1927, North or South Zone, as applicable, are available for public inspection and review at the offices of the Louisiana State Mineral Board from 10:00 a.m. to 3:00 p.m. Monday - Friday.

Any mineral lease selected from the nominated tract and awarded by the Louisiana State Mineral Board shall be without warranty of any kind, either express, implied, or statutory, including, but not limited to, the implied warranties or merchantability and fitness for a particular purpose. Should the mineral lease awarded by the Louisiana State Mineral Board be subsequently modified, cancelled or abrogated due to the existence of conflicting leases, operating agreements, private claims or other existing or future obligations or conditions which may affect all or

any portion of the leased tract, it shall not relieve the Lessee of the obligation to pay any bonus due thereon to the Louisiana State Mineral Board, nor shall the Louisiana State Mineral Board be obligated to refund any consideration paid by the Lessee prior to such modification, cancellation, or abrogation, including, but not limited to, bonuses, rents and royalties.

Applicant: Palmer Petroleum, Inc.

nt
X = 1,713,910
Y = 545,489

X = 1,724,470
Y = 545,499

15± ACRES
JULY, 2002

T 14 N - R 10 W

T 13 N - R 10 W

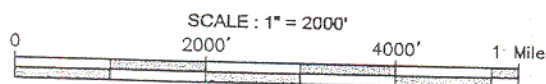
FISH FARM

TR 34574
15± ACS.
JULY, 2002

X = 1,713,910
Y = 529,583

X = 1,724,470
Y = 529,468

RED RIVER PARISH, LOUISIANA



TRACT 34575 - Tensas Parish, Louisiana

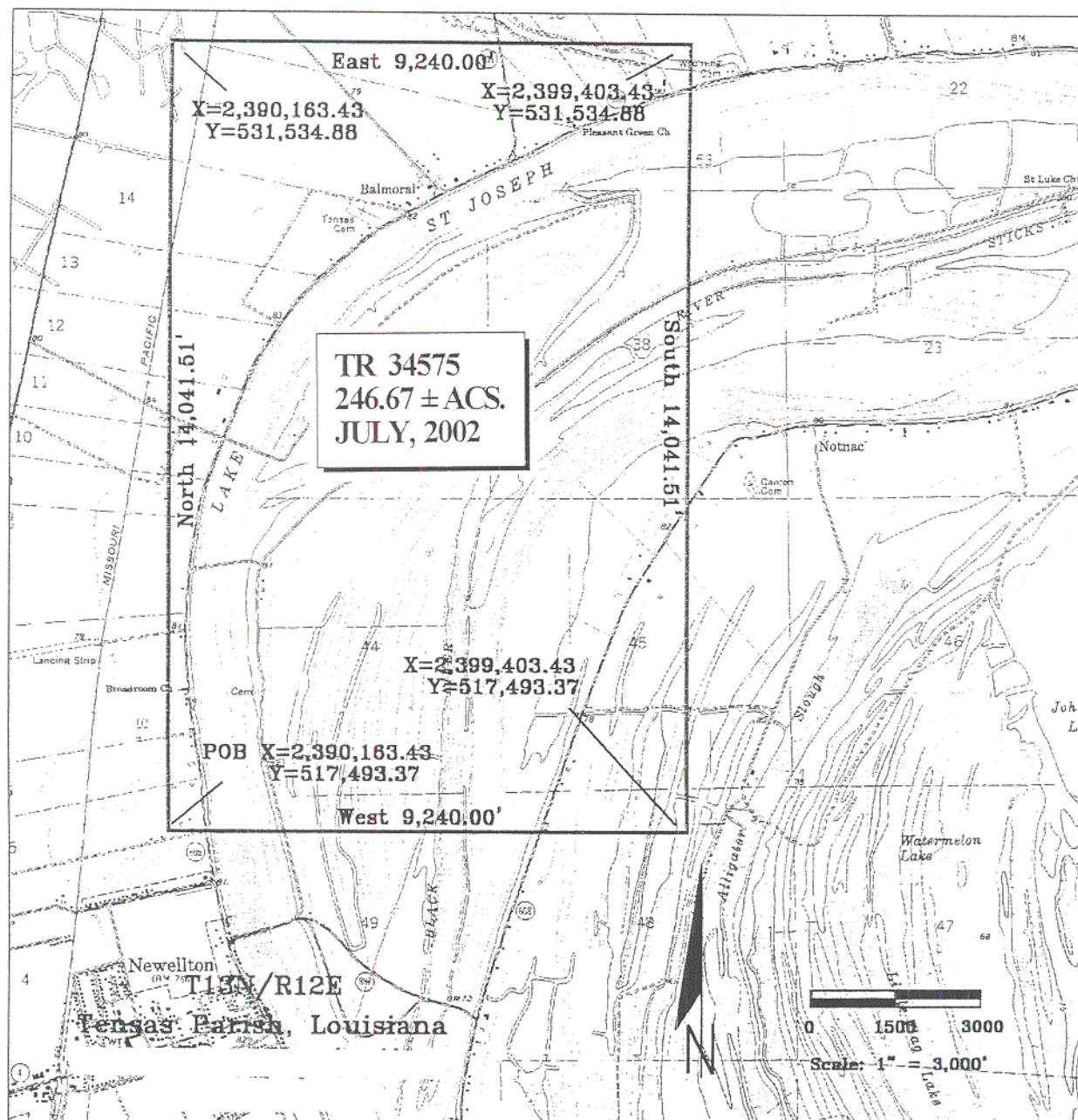
All of the lands now or formerly constituting the beds and bottoms of all water bodies of every nature and description and all islands and other lands formed by accretion or reliction, except tax lands, owned by and not under mineral lease from the State of Louisiana on July 10, 2002, situated in Tensas Parish, Louisiana, within the following described boundaries: Beginning at a point having Coordinates of X = 2,390,163.43 and Y = 517,493.37; thence North 14,041.51 feet to a point having Coordinates of X = 2,390,163.43 and Y = 531,534.88; thence East 9,240.00 feet to a point having Coordinates of X = 2,399,403.43 and Y = 531,534.88; thence South 14,041.51 feet to a point having Coordinates of X = 2,399,403.43 and Y = 517,493.37; thence West 9,240.00 feet to the point of beginning, containing approximately **246.67 acres**, as shown outlined on a plat on file in the Office of Mineral Resources, Department of Natural Resources, as provided by the applicant. All bearings, distances and coordinates are based on Louisiana Coordinate System of 1927 (North Zone).

NOTE: The above description of the tract nominated for lease has been provided exclusively by the party nominating the tract for lease.

Maps depicting the nominated tract, containing the bearings, distances and coordinates of the nominated tract based on the Louisiana Coordinate System of 1927, North or South Zone, as applicable, are available for public inspection and review at the offices of the Louisiana State Mineral Board from 10:00 a.m. to 3:00 p.m. Monday - Friday.

Any mineral lease selected from the nominated tract and awarded by the Louisiana State Mineral Board shall be without warranty of any kind, either express, implied, or statutory, including, but not limited to, the implied warranties or merchantability and fitness for a particular purpose. Should the mineral lease awarded by the Louisiana State Mineral Board be subsequently modified, cancelled or abrogated due to the existence of conflicting leases, operating agreements, private claims or other existing or future obligations or conditions which may affect all or any portion of the leased tract, it shall not relieve the Lessee of the obligation to pay any bonus due thereon to the Louisiana State Mineral Board, nor shall the Louisiana State Mineral Board be obligated to refund any consideration paid by the Lessee prior to such modification, cancellation, or abrogation, including, but not limited to, bonuses, rents and royalties.

Applicant: Mark A. O'Neal & Associates, Inc.



TRACT 34576 - Tensas Parish, Louisiana

All of the lands now or formerly constituting the beds and bottoms of all water bodies of every nature and description and all islands and other lands formed by accretion or reliction, except tax lands, owned by and not under mineral lease from the State of Louisiana on July 10, 2002, situated in Tensas Parish, Louisiana, within the following described boundaries: Beginning at a point having Coordinates of X = 2,390,163.43 and Y = 499,013.37; thence North 18,480.00 feet to a point having Coordinates of X = 2,390,163.43 and Y = 517,493.37; thence East 18,480.00 feet to a point having Coordinates of X = 2,408,643.43 and Y = 517,493.37; thence South 18,480.00 feet to a point having Coordinates of X = 2,408,643.43 and Y = 499,013.37; thence West 18,480.00 feet to the point of beginning, containing approximately **651.95 acres**, as shown outlined on a plat on file in the Office of Mineral Resources, Department of Natural Resources, as provided by the applicant. All bearings, distances and coordinates are based on Louisiana Coordinate System of 1927 (North Zone).

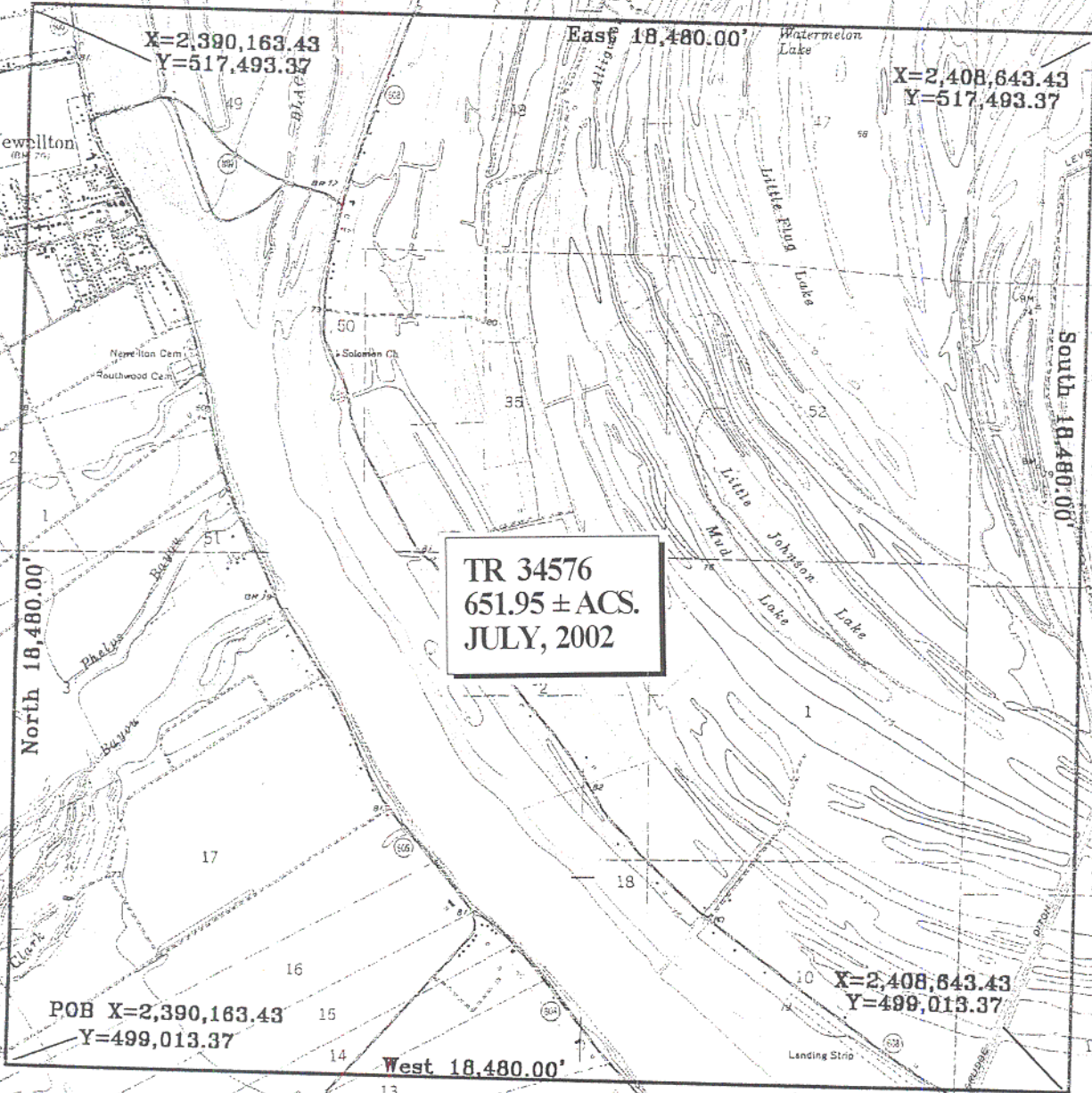
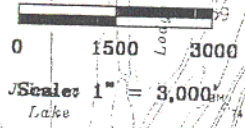
NOTE: The above description of the tract nominated for lease has been provided exclusively by the party nominating the tract for lease.

Maps depicting the nominated tract, containing the bearings, distances and coordinates of the nominated tract based on the Louisiana Coordinate System of 1927, North or South Zone, as applicable, are available for public inspection and review at the offices of the Louisiana State Mineral Board from 10:00 a.m. to 3:00 p.m. Monday - Friday.

Any mineral lease selected from the nominated tract and awarded by the Louisiana State Mineral Board shall be without warranty of any kind, either express, implied, or statutory, including, but not limited to, the implied warranties or merchantability and fitness for a particular purpose. Should the mineral lease awarded by the Louisiana State Mineral Board be subsequently modified, cancelled or abrogated due to the existence of conflicting leases, operating agreements, private claims or other existing or future obligations or conditions which may affect all or any portion of the leased tract, it shall not relieve the Lessee of the obligation to pay any bonus due thereon to the Louisiana State Mineral Board, nor shall the Louisiana State Mineral Board be obligated to refund any consideration paid by the Lessee prior to such modification, cancellation, or abrogation, including, but not limited to, bonuses, rents and royalties.

Applicant: Mark A. O'Neal & Associates, Inc.

T12&13N/R12&13E
Tensas Parish, Louisiana



X=2,390,163.43
Y=517,493.37

X=2,408,643.43
Y=517,493.37

TR 34576
651.95 ± ACS.
JULY, 2002

POB X=2,390,163.43
Y=499,013.37

X=2,408,643.43
Y=499,013.37

West 18,480.00'

TRACT 34577 - Tensas Parish, Louisiana

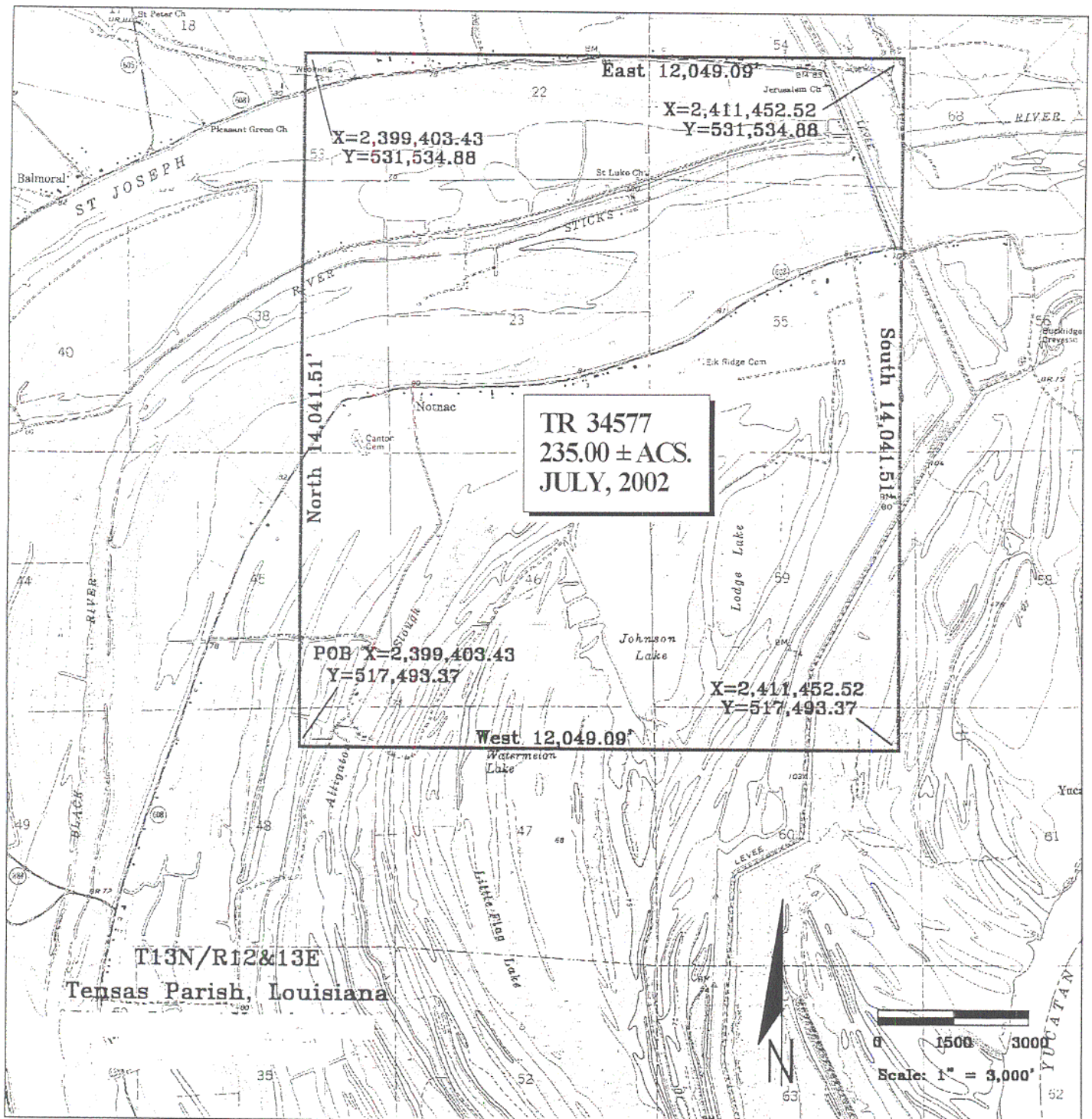
All of the lands now or formerly constituting the beds and bottoms of all water bodies of every nature and description and all islands and other lands formed by accretion or reliction, except tax lands, owned by and not under mineral lease from the State of Louisiana on July 10, 2002, situated in Tensas Parish, Louisiana, within the following described boundaries: Beginning at a point having Coordinates of X = 2,399,403.43 and Y = 517,493.37; thence North 14,041.51 feet to a point having Coordinates of X = 2,399,403.43 and Y = 531,534.88; thence East 12,049.09 feet to a point having Coordinates of X = 2,411,452.52 and Y = 531,534.88; thence South 14,041.51 feet to a point having Coordinates of X = 2,411,452.52 and Y = 517,493.37; thence West 12,049.09 feet to the point of beginning, containing approximately **235.00 acres**, as shown outlined on a plat on file in the Office of Mineral Resources, Department of Natural Resources, as provided by the applicant. All bearings, distances and coordinates are based on Louisiana Coordinate System of 1927 (North Zone).

NOTE: The above description of the tract nominated for lease has been provided exclusively by the party nominating the tract for lease.

Maps depicting the nominated tract, containing the bearings, distances and coordinates of the nominated tract based on the Louisiana Coordinate System of 1927, North or South Zone, as applicable, are available for public inspection and review at the offices of the Louisiana State Mineral Board from 10:00 a.m. to 3:00 p.m. Monday - Friday.

Any mineral lease selected from the nominated tract and awarded by the Louisiana State Mineral Board shall be without warranty of any kind, either express, implied, or statutory, including, but not limited to, the implied warranties or merchantability and fitness for a particular purpose. Should the mineral lease awarded by the Louisiana State Mineral Board be subsequently modified, cancelled or abrogated due to the existence of conflicting leases, operating agreements, private claims or other existing or future obligations or conditions which may affect all or any portion of the leased tract, it shall not relieve the Lessee of the obligation to pay any bonus due thereon to the Louisiana State Mineral Board, nor shall the Louisiana State Mineral Board be obligated to refund any consideration paid by the Lessee prior to such modification, cancellation, or abrogation, including, but not limited to, bonuses, rents and royalties.

Applicant: Mark A. O'Neal & Associates, Inc.



TRACT 34578 - Cameron Parish, Louisiana

All of the right, title and interest of the State of Louisiana, being an undivided 50% interest in the mineral rights only in and to the following described property, which is not under mineral lease from the State of Louisiana on July 10, 2002, situated in Cameron Parish, Louisiana, and being more fully described as follows: The Northeast Quarter of the Northwest Quarter of the Northeast Quarter (NE/4 NW/4 NE/4) and the Northwest Quarter of the Northeast Quarter of the Northeast Quarter (NW/4 NE/4 NE/4) of Section 21, Township 15 South, Range 15 West, Cameron Parish, Louisiana, adjudicated to the State in the name of R. W. Houk for 1935 unpaid taxes and sold to J. P. Crain and A. H. Crain, Sale No. 643, January 12, 1946, containing approximately **20.0 gross acres and 10.0 net acres**, as shown outlined on a plat on file in the Office of Mineral Resources, Department of Natural Resources, as provided by the applicant. All bearings, distances and coordinates are based on Louisiana Coordinate System of 1927 (South Zone).

NOTE: The above description of the tract nominated for lease has been provided exclusively by the party nominating the tract for lease.

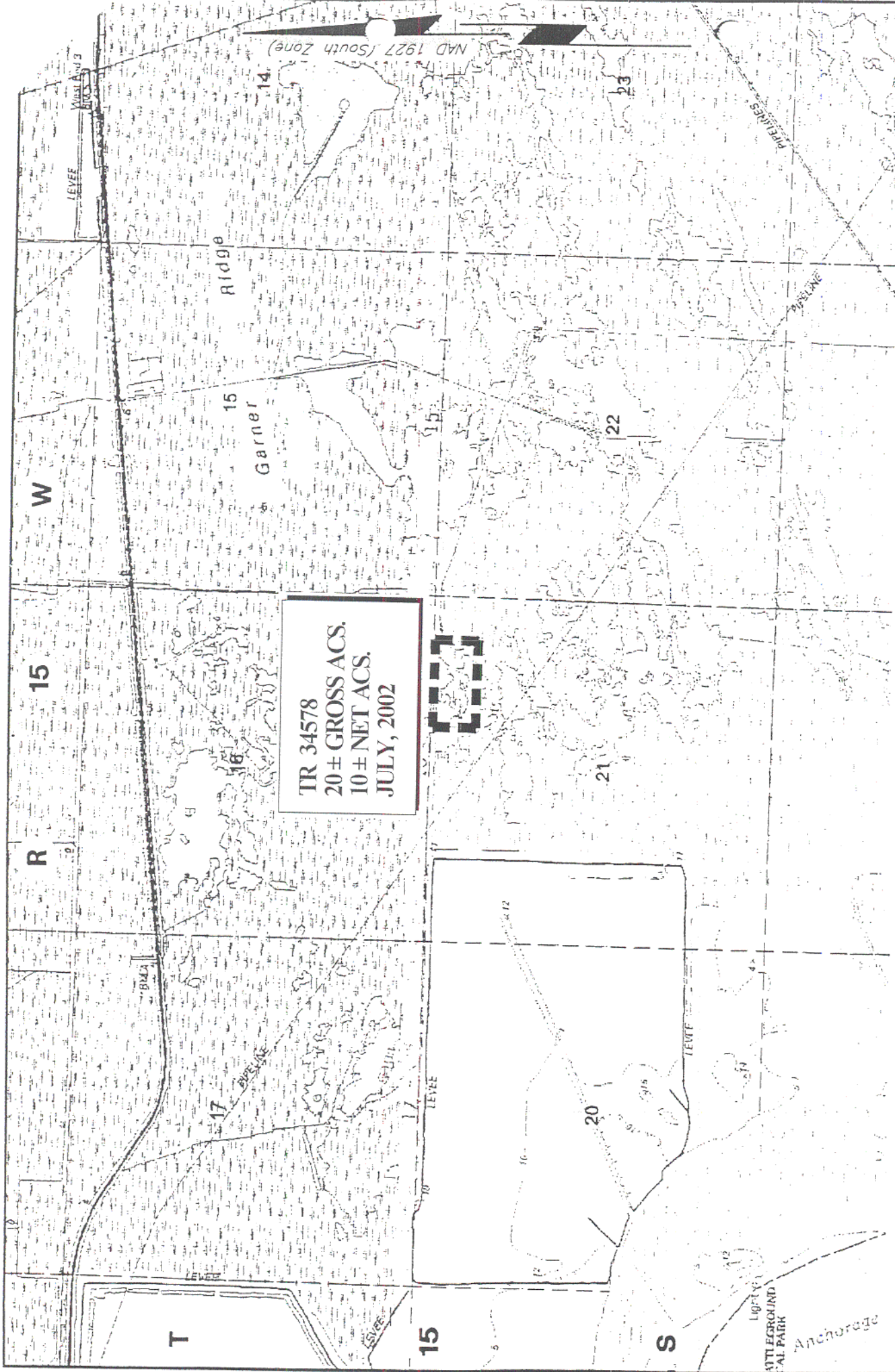
Maps depicting the nominated tract, containing the bearings, distances and coordinates of the nominated tract based on the Louisiana Coordinate System of 1927, North or South Zone, as applicable, are available for public inspection and review at the offices of the Louisiana State Mineral Board from 10:00 a.m. to 3:00 p.m. Monday - Friday.

Any mineral lease selected from the nominated tract and awarded by the Louisiana State Mineral Board shall be without warranty of any kind, either express, implied, or statutory, including, but not limited to, the implied warranties or merchantability and fitness for a particular purpose. Should the mineral lease awarded by the Louisiana State Mineral Board be subsequently modified, cancelled or abrogated due to the existence of conflicting leases, operating agreements, private claims or other existing or future obligations or conditions which may affect all or any portion of the leased tract, it shall not relieve the Lessee of the obligation to pay any bonus due thereon to the Louisiana State Mineral Board, nor shall the Louisiana State Mineral Board be obligated to refund any consideration paid by the Lessee prior to such modification, cancellation, or abrogation, including, but not limited to, bonuses, rents and royalties.

NOTE: The State of Louisiana does hereby reserve, and this lease shall be subject to, the imprescriptible right of surface use in the nature of a servitude in favor of the Department of Natural Resources and/or the Louisiana Department of Wildlife and Fisheries, including its Offices and Commissions, for the sole purpose of implementing, constructing, servicing and maintaining approved coastal zone management and/or restoration

projects. Utilization of any and all rights derived under this lease by the mineral lessee, its agents, successors or assigns, shall not interfere with nor hinder the reasonable surface use by the Department of Natural Resources and/or the Louisiana Department of Wildlife and Fisheries, its Offices or Commissions, as hereinabove reserved.

Applicant: Basin Properties, Inc.



140

CAMERON PARISH, LOUISIANA

SCALE : 1" = 2000'

TRACT 34579 - Cameron Parish, Louisiana

All of the right, title and interest of the State of Louisiana, being an undivided 50% interest in the mineral rights only in and to the following described property, which is not under mineral lease from the State of Louisiana on July 10, 2002, situated in Cameron Parish, Louisiana, and being more fully described as follows: The Northwest Quarter of the Southwest Quarter of the Southwest Quarter (NW/4 SW/4 SW/4) of Section 10, Township 15 South, Range 15 West, Cameron Parish, Louisiana, adjudicated to the State in the name of R. W. Houk for 1935 unpaid taxes and sold to J. P. Crain and A. H. Crain, Sale No. 643, January 12, 1946, containing approximately **10.0 gross acres and 5.0 net acres**, as shown outlined on a plat on file in the Office of Mineral Resources, Department of Natural Resources, as provided by the applicant. All bearings, distances and coordinates are based on Louisiana Coordinate System of 1927 (South Zone).

NOTE: The above description of the tract nominated for lease has been provided exclusively by the party nominating the tract for lease.

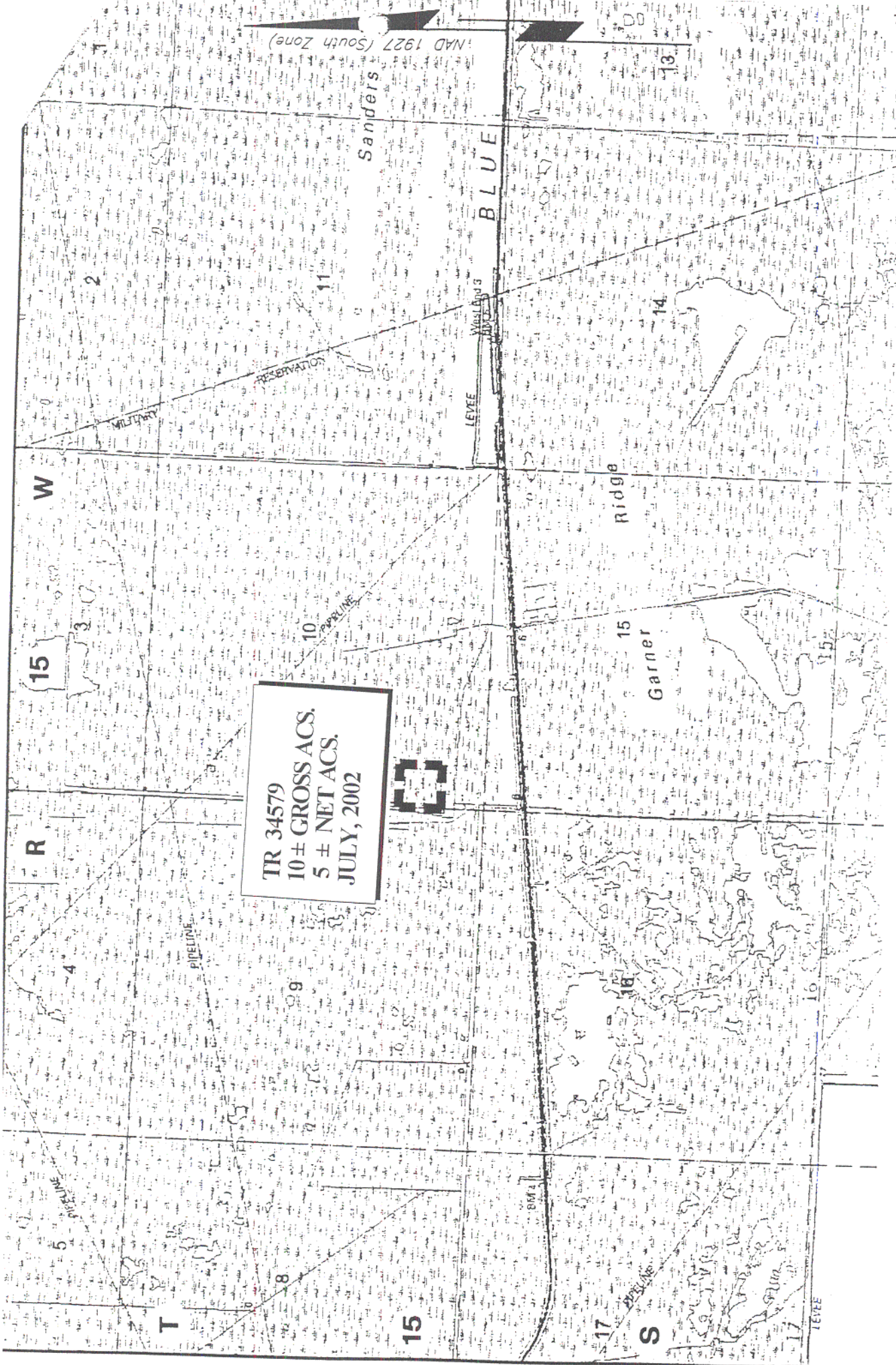
Maps depicting the nominated tract, containing the bearings, distances and coordinates of the nominated tract based on the Louisiana Coordinate System of 1927, North or South Zone, as applicable, are available for public inspection and review at the offices of the Louisiana State Mineral Board from 10:00 a.m. to 3:00 p.m. Monday - Friday.

Any mineral lease selected from the nominated tract and awarded by the Louisiana State Mineral Board shall be without warranty of any kind, either express, implied, or statutory, including, but not limited to, the implied warranties or merchantability and fitness for a particular purpose. Should the mineral lease awarded by the Louisiana State Mineral Board be subsequently modified, cancelled or abrogated due to the existence of conflicting leases, operating agreements, private claims or other existing or future obligations or conditions which may affect all or any portion of the leased tract, it shall not relieve the Lessee of the obligation to pay any bonus due thereon to the Louisiana State Mineral Board, nor shall the Louisiana State Mineral Board be obligated to refund any consideration paid by the Lessee prior to such modification, cancellation, or abrogation, including, but not limited to, bonuses, rents and royalties.

NOTE: The State of Louisiana does hereby reserve, and this lease shall be subject to, the imprescriptible right of surface use in the nature of a servitude in favor of the Department of Natural Resources and/or the Louisiana Department of Wildlife and Fisheries, including its Offices and Commissions, for the sole purpose of implementing, constructing, servicing and maintaining approved coastal zone management and/or restoration projects. Utilization of any and all rights derived under this lease by the mineral lessee, its agents, successors or assigns, shall not interfere

with nor hinder the reasonable surface use by the Department of Natural Resources and/or the Louisiana Department of Wildlife and Fisheries, its Offices or Commissions, as hereinabove reserved.

Applicant: Basin Properties, Inc.



TR 34579
10 ± GROSS ACS.
5 ± NET ACS.
JULY, 2002

143

CAMERON PARISH, LOUISIANA

SCALE : 1" = 2000'

TRACT 34580 - Cameron Parish, Louisiana

All of the right, title and interest of the State of Louisiana, being an undivided 50% interest in the mineral rights only in and to the following described property, which is not under mineral lease from the State of Louisiana on July 10, 2002, situated in Cameron Parish, Louisiana, and being more fully described as follows: The Southeast Quarter of the Southwest Quarter of the Southeast Quarter (SE/4 SW/4 SE/4) of Section 10, Township 15 South, Range 15 West, Cameron Parish, Louisiana, adjudicated to the State in the name of R. W. Houk for 1935 unpaid taxes and sold to J. P. Crain and A. H. Crain, Sale No. 643, January 12, 1946, containing approximately **10.0 gross acres and 5.0 net acres**, as shown outlined on a plat on file in the Office of Mineral Resources, Department of Natural Resources, as provided by the applicant. All bearings, distances and coordinates are based on Louisiana Coordinate System of 1927 (South Zone).

NOTE: The above description of the tract nominated for lease has been provided exclusively by the party nominating the tract for lease.

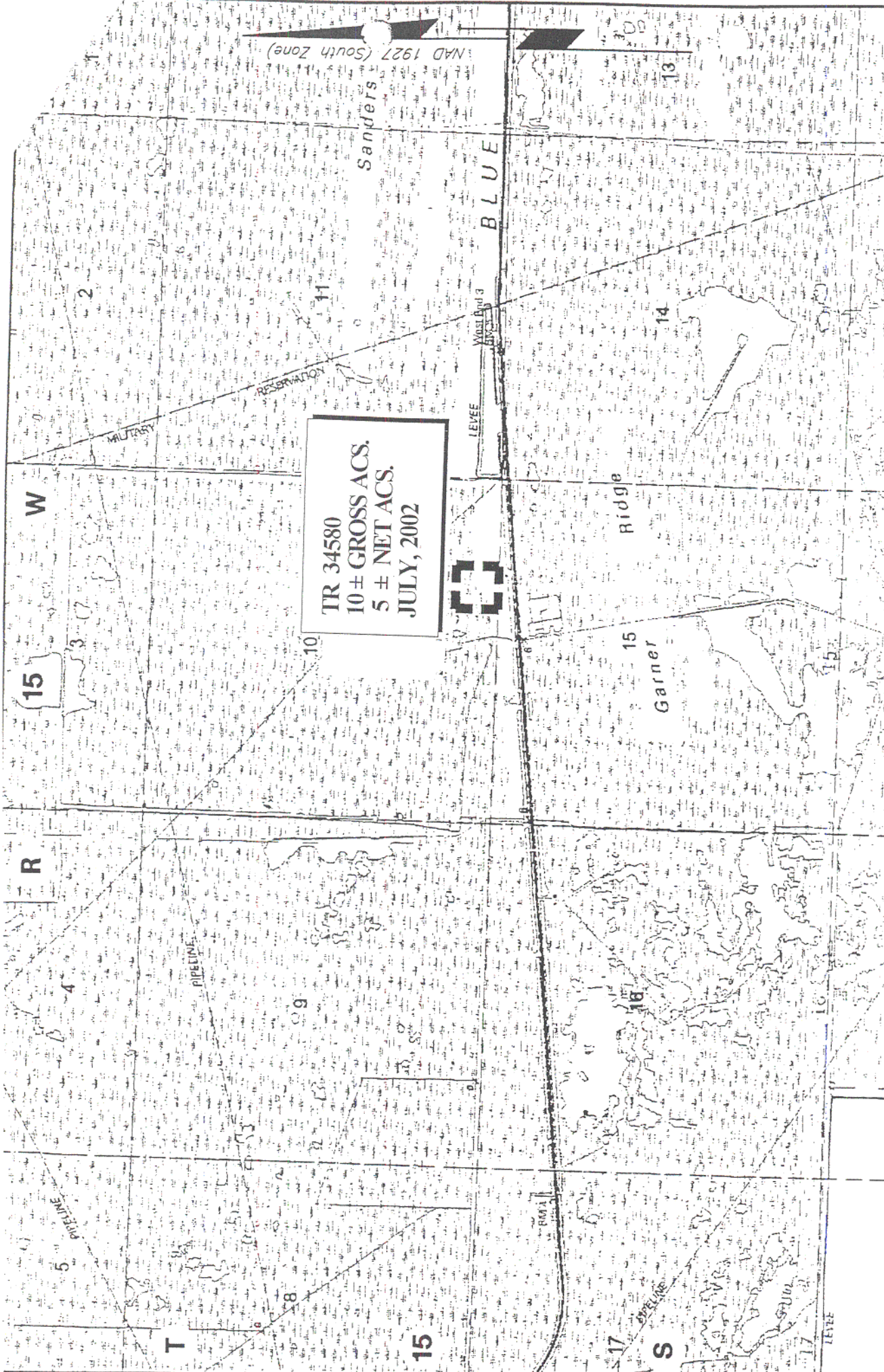
Maps depicting the nominated tract, containing the bearings, distances and coordinates of the nominated tract based on the Louisiana Coordinate System of 1927, North or South Zone, as applicable, are available for public inspection and review at the offices of the Louisiana State Mineral Board from 10:00 a.m. to 3:00 p.m. Monday - Friday.

Any mineral lease selected from the nominated tract and awarded by the Louisiana State Mineral Board shall be without warranty of any kind, either express, implied, or statutory, including, but not limited to, the implied warranties or merchantability and fitness for a particular purpose. Should the mineral lease awarded by the Louisiana State Mineral Board be subsequently modified, cancelled or abrogated due to the existence of conflicting leases, operating agreements, private claims or other existing or future obligations or conditions which may affect all or any portion of the leased tract, it shall not relieve the Lessee of the obligation to pay any bonus due thereon to the Louisiana State Mineral Board, nor shall the Louisiana State Mineral Board be obligated to refund any consideration paid by the Lessee prior to such modification, cancellation, or abrogation, including, but not limited to, bonuses, rents and royalties.

NOTE: The State of Louisiana does hereby reserve, and this lease shall be subject to, the imprescriptible right of surface use in the nature of a servitude in favor of the Department of Natural Resources and/or the Louisiana Department of Wildlife and Fisheries, including its Offices and Commissions, for the sole purpose of implementing, constructing, servicing and maintaining approved coastal zone management and/or restoration projects. Utilization of any and all rights derived under this lease by the mineral lessee, its agents, successors or assigns, shall not interfere

with nor hinder the reasonable surface use by the Department of Natural Resources and/or the Louisiana Department of Wildlife and Fisheries, its Offices or Commissions, as hereinabove reserved.

Applicant: Basin Properties, Inc.



NAD 1927 (South Zone)

146

CAMERON PARISH, LOUISIANA

SCALE : 1" = 2000'

TRACT 34581 - Cameron Parish, Louisiana

All of the right, title and interest of the State of Louisiana, being an undivided 50% interest in the mineral rights only in and to the following described property, which is not under mineral lease from the State of Louisiana on July 10, 2002, situated in Cameron Parish, Louisiana, and being more fully described as follows: The Northeast Quarter of the Southeast Quarter of the Southwest Quarter (NE/4 SE/4 SW/4) and the Northwest Quarter of the Southwest Quarter of the Southeast Quarter (NW/4 SW/4 SE/4) of Section 15, Township 15 South, Range 15 West, Cameron Parish, Louisiana, adjudicated to the State in the name of R. W. Houk for 1935 unpaid taxes and sold to J. P. Crain and A. H. Crain, Sale No. 643, January 12, 1946, containing approximately **20.0 gross acres and 10.0 net acres**, as shown outlined on a plat on file in the Office of Mineral Resources, Department of Natural Resources, as provided by the applicant. All bearings, distances and coordinates are based on Louisiana Coordinate System of 1927 (South Zone).

NOTE: The above description of the tract nominated for lease has been provided exclusively by the party nominating the tract for lease.

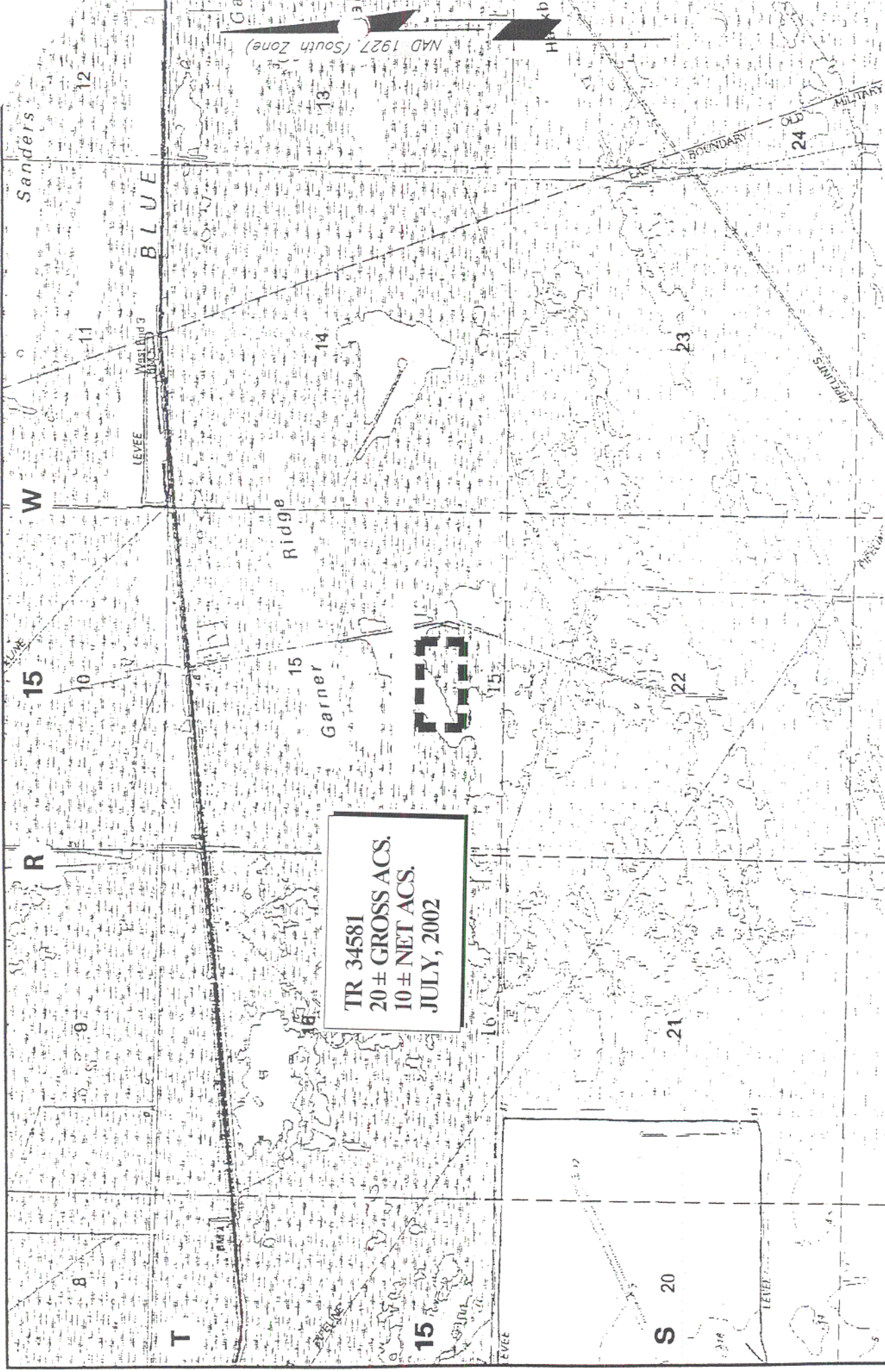
Maps depicting the nominated tract, containing the bearings, distances and coordinates of the nominated tract based on the Louisiana Coordinate System of 1927, North or South Zone, as applicable, are available for public inspection and review at the offices of the Louisiana State Mineral Board from 10:00 a.m. to 3:00 p.m. Monday - Friday.

Any mineral lease selected from the nominated tract and awarded by the Louisiana State Mineral Board shall be without warranty of any kind, either express, implied, or statutory, including, but not limited to, the implied warranties or merchantability and fitness for a particular purpose. Should the mineral lease awarded by the Louisiana State Mineral Board be subsequently modified, cancelled or abrogated due to the existence of conflicting leases, operating agreements, private claims or other existing or future obligations or conditions which may affect all or any portion of the leased tract, it shall not relieve the Lessee of the obligation to pay any bonus due thereon to the Louisiana State Mineral Board, nor shall the Louisiana State Mineral Board be obligated to refund any consideration paid by the Lessee prior to such modification, cancellation, or abrogation, including, but not limited to, bonuses, rents and royalties.

NOTE: The State of Louisiana does hereby reserve, and this lease shall be subject to, the imprescriptible right of surface use in the nature of a servitude in favor of the Department of Natural Resources and/or the Louisiana Department of Wildlife and Fisheries, including its Offices and Commissions, for the sole purpose of implementing, constructing, servicing and maintaining approved coastal zone management and/or restoration

projects. Utilization of any and all rights derived under this lease by the mineral lessee, its agents, successors or assigns, shall not interfere with nor hinder the reasonable surface use by the Department of Natural Resources and/or the Louisiana Department of Wildlife and Fisheries, its Offices or Commissions, as hereinabove reserved.

Applicant: Basin Properties, Inc.



149

CAMERON PARISH, LOUISIANA

SCALE : 1" = 2000'

TRACT 34582 - Cameron Parish, Louisiana

All of the lands now or formerly constituting the beds and bottoms of all water bodies of every nature and description and all islands and other lands formed by accretion or reliction, except tax lands, owned by and not under mineral lease from the State of Louisiana on July 10, 2002, situated in Cameron Parish, Louisiana, within the following described boundaries: Beginning at a point having Coordinates of X = 1,371,300.00 and Y = 419,500.00; thence South 11,144.00 feet to a point having Coordinates of X = 1,371,300.00 and Y = 408,356.00; thence West 15,800.00 feet to point having Coordinates of X = 1,355,500.00 and Y = 408,356.00; thence North 11,144.00 feet to a point having Coordinates of X = 1,355,500.00 and Y = 419,500.00; thence East 15,800.00 feet to the point of beginning, containing approximately **365 acres**, as shown outlined on a plat on file in the Office of Mineral Resources, Department of Natural Resources, as provided by the applicant. All bearings, distances and coordinates are based on Louisiana Coordinate System of 1927 (South Zone).

NOTE: The above description of the tract nominated for lease has been provided exclusively by the party nominating the tract for lease.

Maps depicting the nominated tract, containing the bearings, distances and coordinates of the nominated tract based on the Louisiana Coordinate System of 1927, North or South Zone, as applicable, are available for public inspection and review at the offices of the Louisiana State Mineral Board from 10:00 a.m. to 3:00 p.m. Monday - Friday.

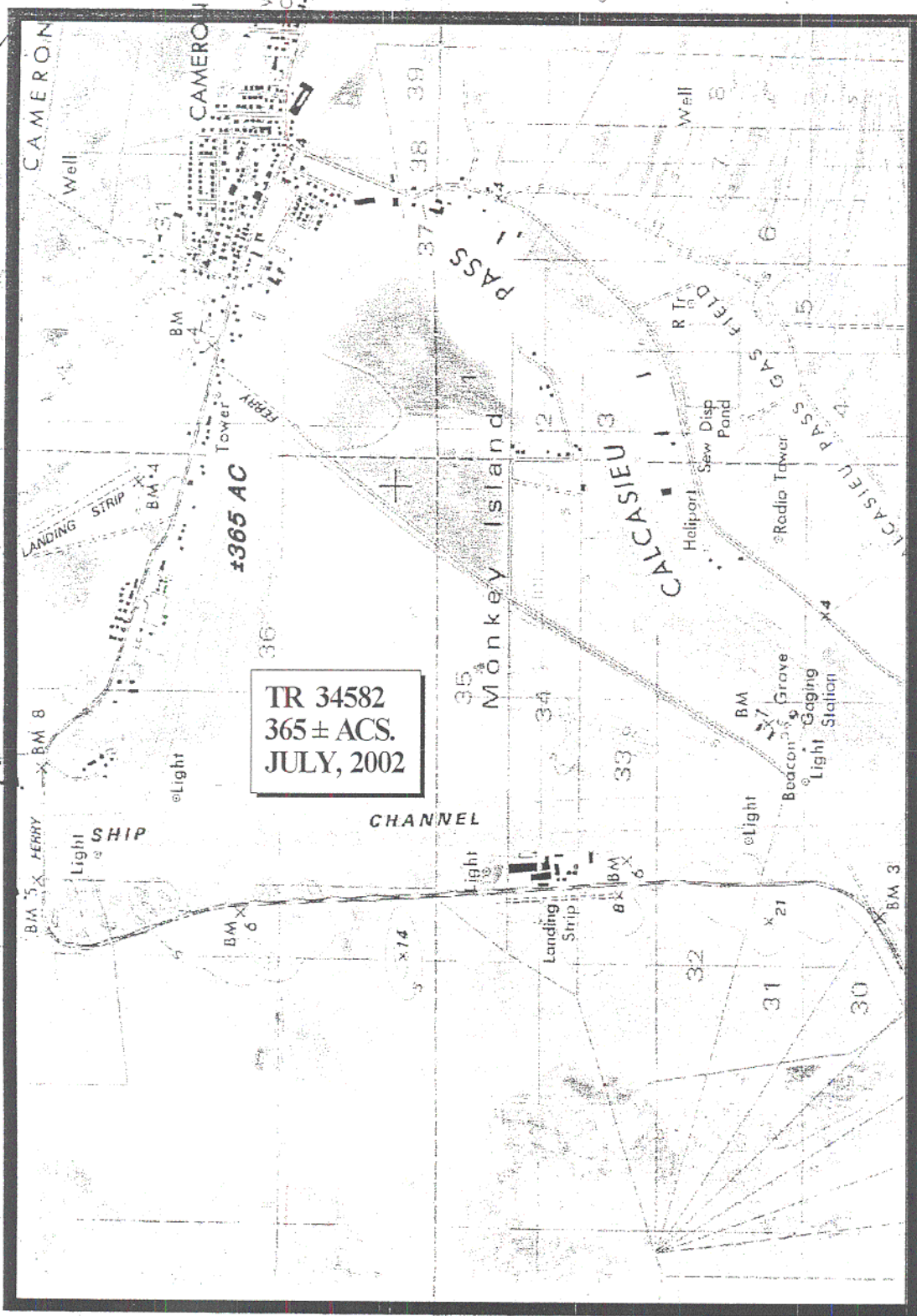
Any mineral lease selected from the nominated tract and awarded by the Louisiana State Mineral Board shall be without warranty of any kind, either express, implied, or statutory, including, but not limited to, the implied warranties or merchantability and fitness for a particular purpose. Should the mineral lease awarded by the Louisiana State Mineral Board be subsequently modified, cancelled or abrogated due to the existence of conflicting leases, operating agreements, private claims or other existing or future obligations or conditions which may affect all or any portion of the leased tract, it shall not relieve the Lessee of the obligation to pay any bonus due thereon to the Louisiana State Mineral Board, nor shall the Louisiana State Mineral Board be obligated to refund any consideration paid by the Lessee prior to such modification, cancellation, or abrogation, including, but not limited to, bonuses, rents and royalties.

NOTE: The State of Louisiana does hereby reserve, and this lease shall be subject to, the imprescriptible right of surface use in the nature of a servitude in favor of the Department of Natural Resources and/or the Louisiana Department of Wildlife and Fisheries, including its Offices and Commissions, for the sole purpose of implementing, constructing, servicing and maintaining approved coastal zone management and/or restoration

projects. Utilization of any and all rights derived under this lease by the mineral lessee, its agents, successors or assigns, shall not interfere with nor hinder the reasonable surface use by the Department of Natural Resources and/or the Louisiana Department of Wildlife and Fisheries, its Offices or Commissions, as hereinabove reserved.

Applicant: Fleetwood Resources, Inc.

P.O.B.
X= 1,371,300.00'
Y= 419,500.00'



TR 34582
365 ± ACS.
JULY, 2002

CAMERON PARISH, LOUISIANA

