

NOT TO BE USED WITH A PORTION BID
FOR INFORMATIONAL PURPOSES ONLY!

F & A Map Services
Division of P

RASSY LAKE

T-15-S-R-13E

T-15-S-R-14-E

T-15-S-R-15E

S.L. 16471

TR 32679

BAYOU SHERMAN FIELD

EAST LAKE PALOURDE FIELD

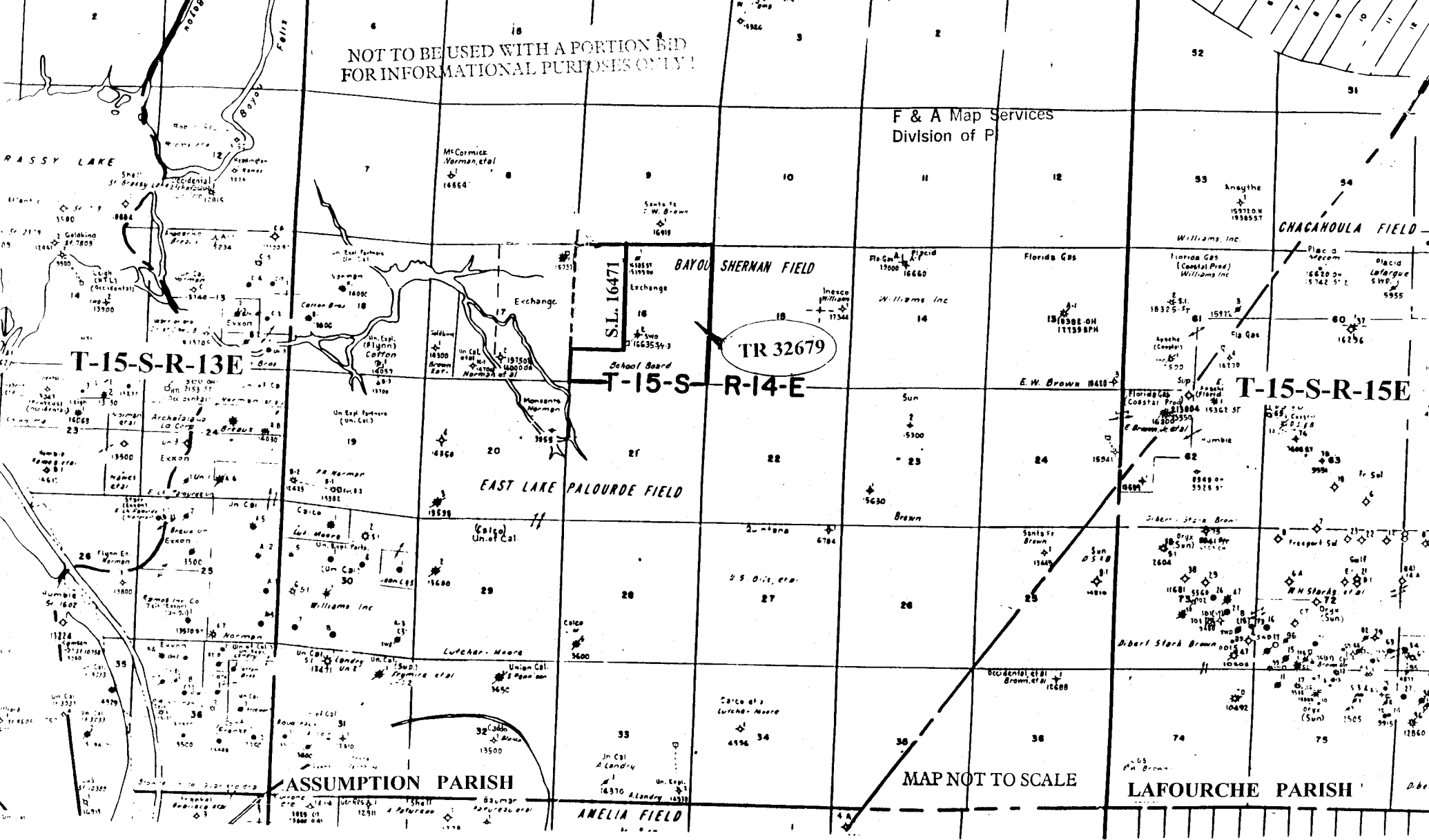
CHACANOULA FIELD

ASSUMPTION PARISH

LAFOURCHE PARISH

MAP NOT TO SCALE

ANELIA FIELD



TRACT 32679 - STATE AGENCY - Assumption and Lafourche Parishes, Louisiana

The State Mineral Board acting on behalf of the Assumption Parish School Board and the Lafourche Parish School Board, pursuant to Resolutions adopted by those bodies and in accordance with Louisiana Revised Statutes 30:121-136 and 151-156, as amended, and Article 12, Section 18 of the Louisiana Constitution of 1921, as amended, which by Section 16 (A) 9, and 16 (B) of Article XIV of the 1974 Constitution is continued as a statute subject to arrangement in proper statutory form or modification provided by law, advertises the following described lands not under mineral lease on July 12, 2000: All of Section 16, Township 15 South, Range 14 East, located in Assumption Parish, Louisiana, said township situated in Assumption and Lafourche Parishes, Louisiana, excluding beds and bottoms of all navigable waters located in said section, containing approximately 493.85 acres, as shown outlined in red on a plat on file in the Office of Mineral Resources, Department of Natural Resources.

NOTE: "Lessors acknowledge that said Township 15 South, Range 14 East, is located 94.40% in the Parish of Assumption and 5.60% in the Parish of Lafourche; and Lessee is authorized and directed to pay any and all rentals and royalties which may accrue under the terms of this lease to Lessors separately and in the following proportions: Assumption Parish School Board - 94.40% and Lafourche Parish School Board - 5.60%" and "prospective bidders are hereby placed on notice that execution by the State Mineral Board of oil, gas and mineral lease on behalf of the Assumption Parish School Board and the Lafourche Parish School Board on the above described portion of section shall not be construed as a waiver by the State Mineral Board of any rights that it may have to lease for and on behalf of the State of Louisiana any navigable water bottoms that might be included within said portion of said section."

NOTE: Lessor will accept not less than one-fourth royalties on all minerals.

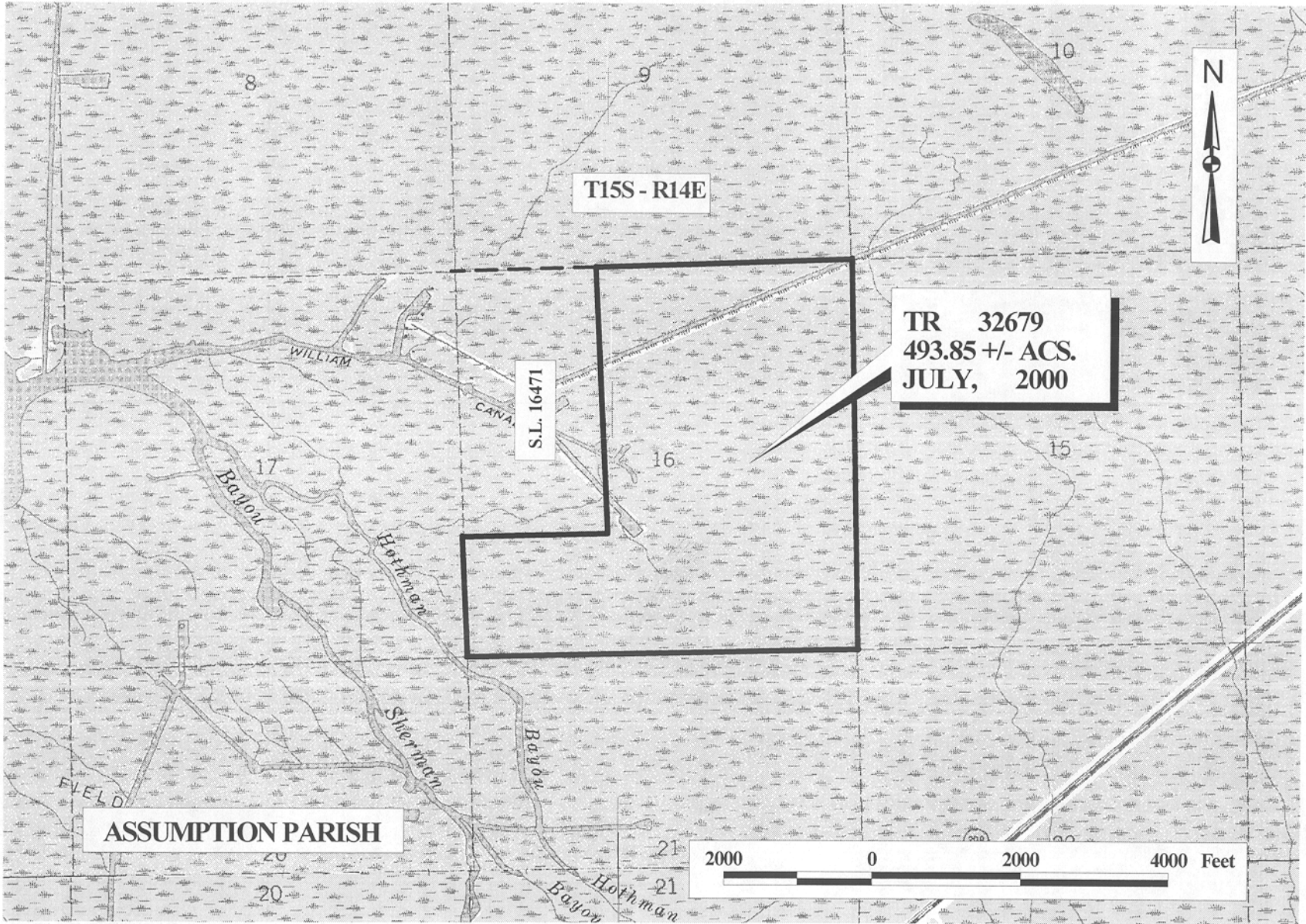
NOTE: Lessor will require all royalties to be paid on "current market value" for all hydrocarbons.

NOTE: The Lessee shall conduct its operations in such a manner as to reasonable minimize any interference with or disruption of Lessor's use of the surface of the leased property or its use by Lessor's Lessees of hunting, trapping and/or pasturage rights.

NOTE: The State of Louisiana does hereby reserve, and this lease shall be subject to, the imprescriptible right of surface use in the nature of a servitude in favor of the Department of Natural Resources, including its Offices and Commissions, for the sole purpose of implementing, constructing, servicing and maintaining approved coastal zone management and/or restoration projects. Utilization of any and all rights derived under this lease by the mineral lessee, its agents, successors or assigns, shall not interfere with nor hinder the reasonable surface use by the Department of Natural Resources, its Offices or Commissions, as hereinabove reserved.

Applicant: C.M. Perron to Agencies and by Resolutions of the Assumption and Lafourche Parish School Boards authorizing the Mineral Board to act in its behalf.

Bidder	Cash Payment	Price / Acre	Rental	Oil	Gas	Other



OFFICIAL COPY
OFFICE OF MINERAL RESOURCES
DEPT. OF NATURAL RESOURCES
DO NOT REMOVE

NOT TO BE USED WITH A PORTION OF THE MAP FOR INFORMATIONAL PURPOSES ONLY

CALIFORNIA BAY

TELLOP
S 1874C
1890

The Co.
S 1874E

TR 32680

CALIFORNIA BAY
Southampton
S 1820D
1870D

AUGUSTE BAY

MANGROVE PT

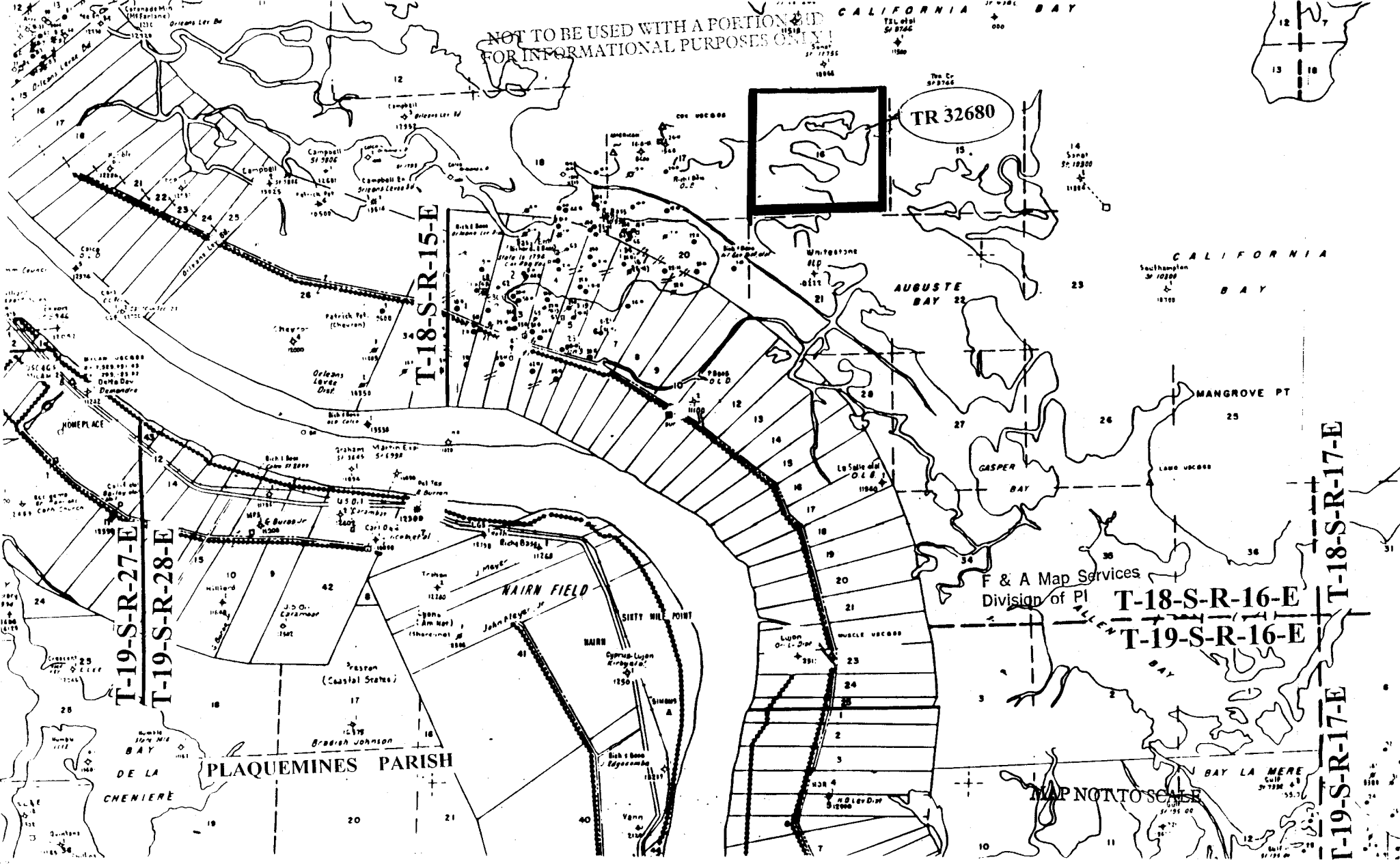
F & A Map Services
Division of PI

T-18-S-R-16-E

T-19-S-R-16-E

T-18-S-R-17-E

T-19-S-R-17-E



TRACT 32680 - STATE AGENCY - Plaquemines Parish, Louisiana

The State Mineral Board acting on behalf of the Plaquemines Parish School Board, pursuant to Resolution adopted by that body and in accordance with Louisiana Revised Statutes 30:121-136 and 151-156, as amended, and Article 12, Section 18 of the Louisiana Constitution of 1921, as amended, which by Section 16 (A) 9, and 16 (B) of Article XIV of the 1974 Constitution is continued as a statute subject to arrangement in proper statutory form or modification provided by law, advertises the following described lands not under mineral lease on July 12, 2000: All of Fractional Section 16, Township 18 South, Range 16 East, Plaquemines Parish, Louisiana, excluding beds and bottoms of all navigable waters located in said section, containing approximately 219.00 acres, as shown outlined in red on a plat on file in the Office of Mineral Resources, Department of Natural Resources.

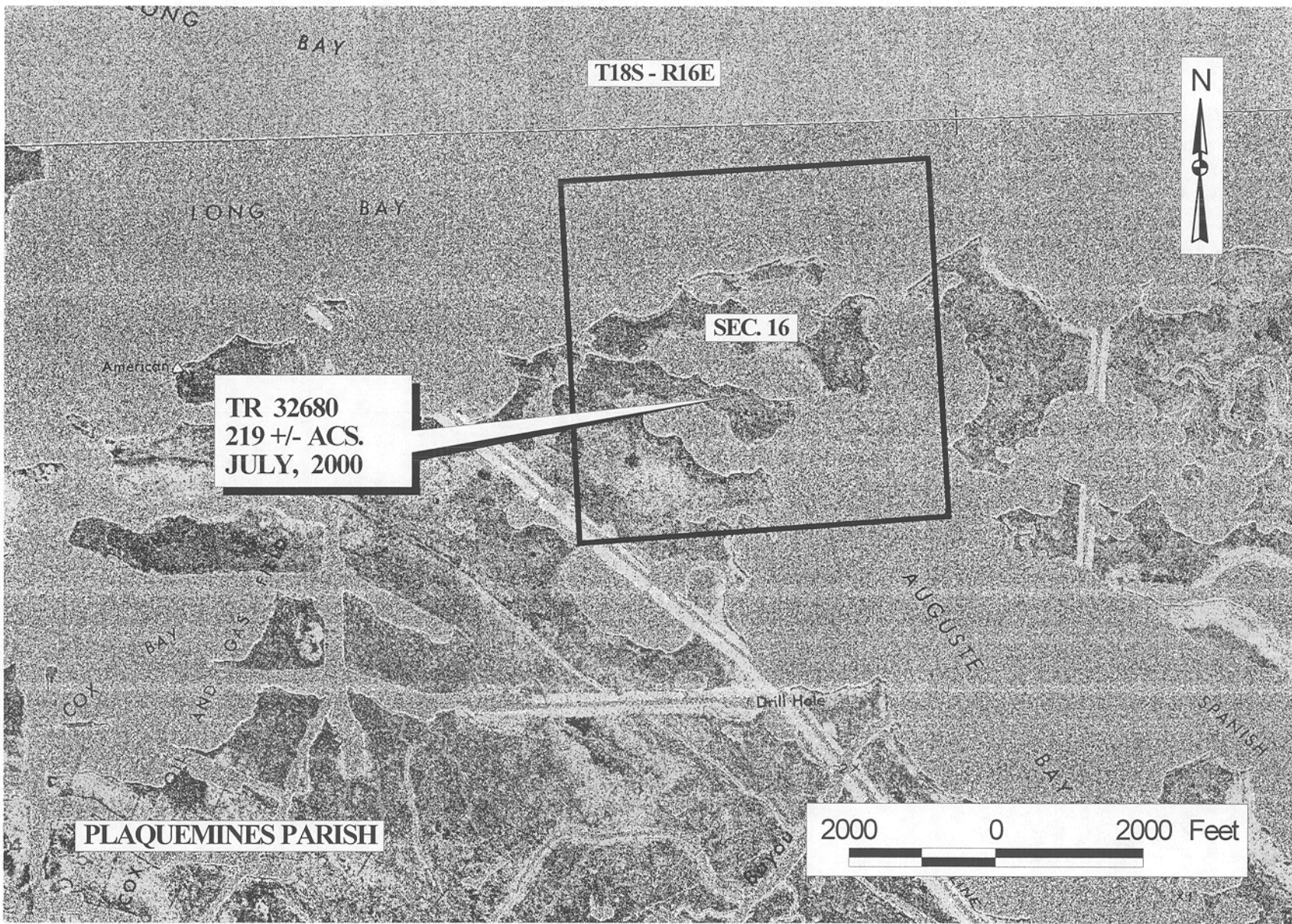
NOTE: Plaquemines Parish School Board requires a minimum of not less than twenty-five percent (25%) royalty and a "favored nations" clause.

NOTE: The above tract is located in or near an oyster restricted area and all operations in such area must be conducted in strict conformity with the stipulations and/or regulations of the Louisiana Department of Wildlife and Fisheries.

NOTE: The State of Louisiana does hereby reserve, and this lease shall be subject to, the imprescriptible right of surface use in the nature of a servitude in favor of the Department of Natural Resources, including its Offices and Commissions, for the sole purpose of implementing, constructing, servicing and maintaining approved coastal zone management and/or restoration projects. Utilization of any and all rights derived under this lease by the mineral lessee, its agents, successors or assigns, shall not interfere with nor hinder the reasonable surface use by the Department of Natural Resources, its Offices or Commissions, as hereinabove reserved.

Applicant: Boudreaux & Thibodeaux, Ltd. to Agency and by Resolution from the Plaquemines Parish School Board authorizing the Mineral Board to act in its behalf.

Bidder	Cash Payment	Price / Acre	Rental	Oil	Gas	Other



OFFICIAL COPY
OFFICE OF MINERAL RESOURCES
DEPT. OF NATURAL RESOURCES
DO NOT REMOVE

18535