

OFFSHORE

TRACTS

NOT TO BE USED WITH A PORTION BID
FOR INFORMATIONAL PURPOSES ONLY!

NOT TO BE USED WITH A PORTION BID
FOR INFORMATIONAL PURPOSES ONLY!

L.L. & E.
St. 13889

U.S. SUPREME COURT
DEGREE LINE - JUNE 15, 1975

P.O.B.
X=2,694,350.00
Y= 263,330.00

TR 32609

MAIN PASS BLK. 56 FIELD

55

56

B(9) LINE

TR 32610

TR 32613

Main Pass Area, Revised
Plaquemines PH.

LINDER
OCS 10895

P.O.B.
X=2,694,350.00
Y= 248,580.00

P.O.B.
X=2,709,100.00
Y= 248,580.00

TR 32611

SL 15087

TR 32614

TOTAL PET.
OCS 5692

F & A Map Services
Division of PI

MAIN PASS BLK. 64 FIELD

SL 15840

SL 15087

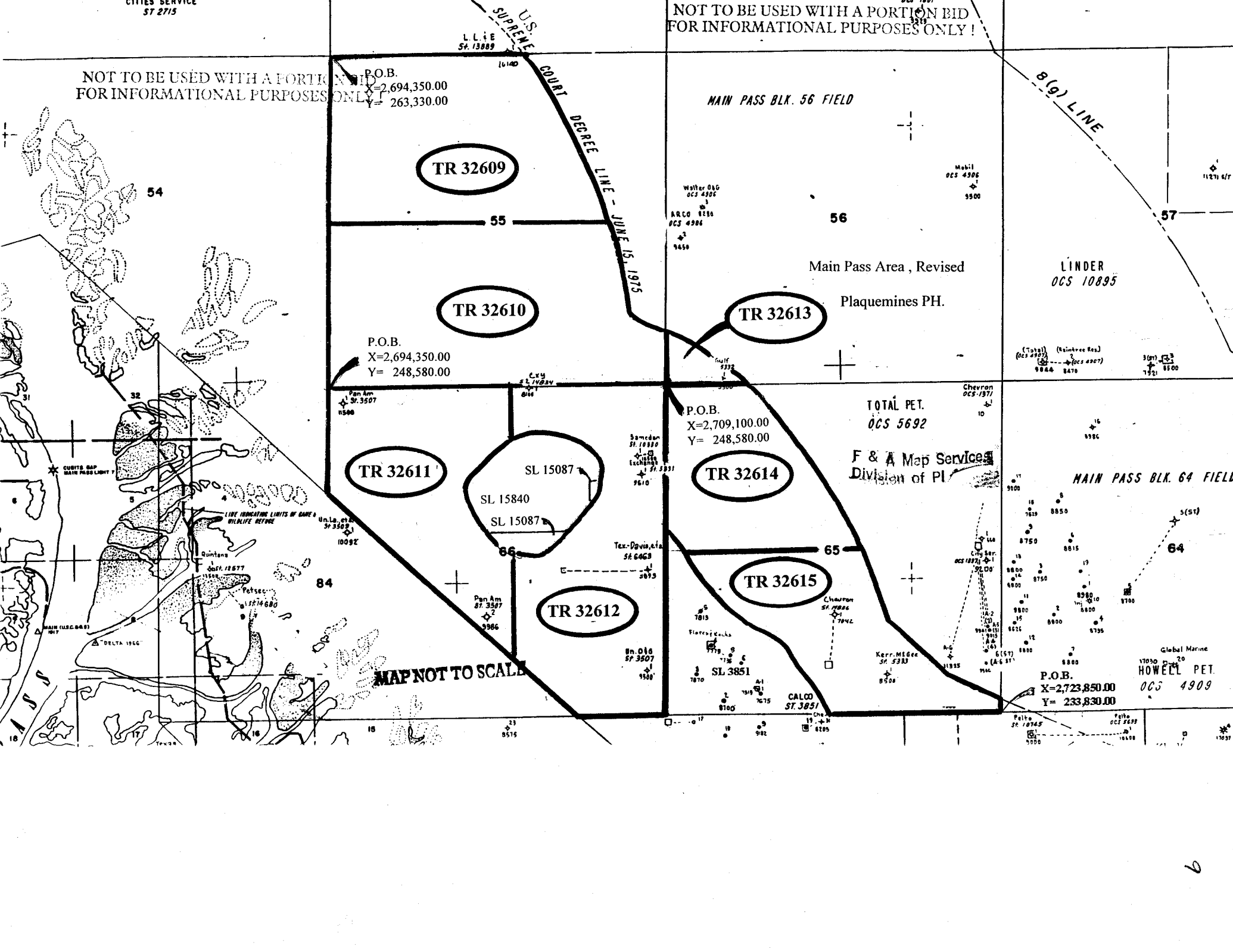
TR 32615

TR 32612

P.O.B.
X=2,723,850.00
Y= 233,830.00

Global Marine
HOWELL PET.
OCS 4909

MAP NOT TO SCALE



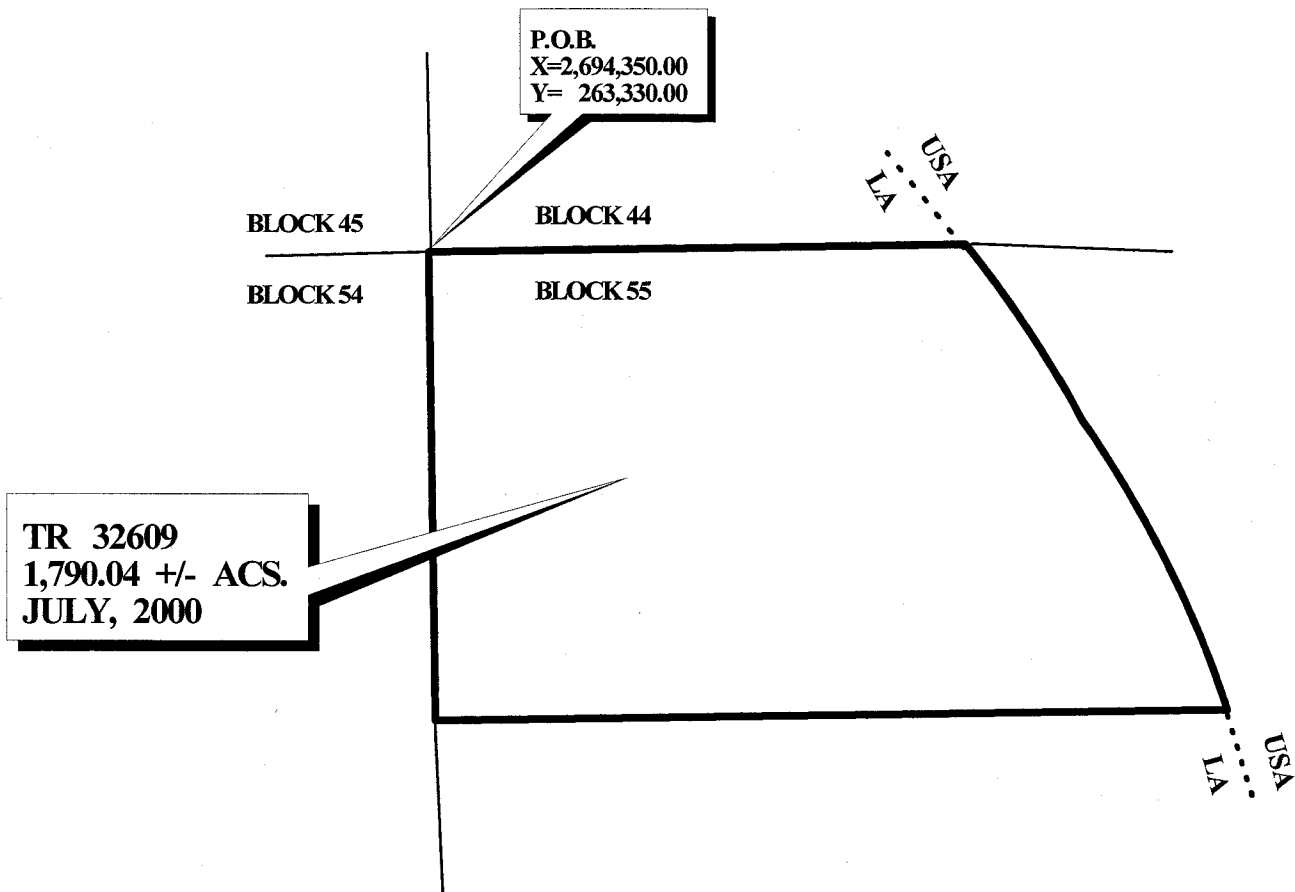
TRACT 32609 - PORTION OF BLOCK 55, MAIN PASS AREA, REVISED, Plaquemines Parish, Louisiana

That portion of Block 55, Main Pass Area, Revised, Plaquemines Parish, Louisiana, belonging to the State of Louisiana and not under mineral lease on July 12, 2000, described as follows: Beginning at a point having Coordinates of X = 2,694,350.00 and Y = 263,330.00, said point also being the Northwest corner of Block 55, Main Pass Area, Revised; thence East 8,347.99 feet along the North line of said Block 55 to a point having Coordinates of X = 2,702,697.99 and Y = 263,330.00, said point also being on the three mile boundary line as set out in the June, 1975, decree of the Supreme Court of the United States; thence along said three mile boundary line the following courses and distances: on a curve to the right, having a radius of 18,240.60, an arc length of 3,313.72 feet to a point having Coordinates of X = 2,704,468.00 and Y = 260,534.00; on a curve to the right, having a radius of 18,240.60, an arc length of 5,100.75 feet to a point having Coordinates of X = 2,706,677.36 and Y = 255,955.00; thence West 12,327.36 feet to a point having Coordinates of X = 2,694,350.00 and Y = 255,955.00, said point also being on the West line of said Block 55; thence North 7,375.00 feet along said West line of said Block 55 to the point of beginning, containing approximately 1,790.04 acres, as shown outlined in red on a plat on file in the Office of Mineral Resources, Department of Natural Resources, **LESS AND EXCEPT** that portion thereof, if any, which is more than three nautical miles from the coast line as determined by the Report of the Special Master in the litigation in the Supreme Court of the United States styled United States v. State of Louisiana et al No. 9 Original, said three mile line as set out in the June, 1975, decree of the Supreme Court. All bearings, distances and coordinates are based on Louisiana Coordinate System of 1927 (South Zone).

NOTE: The State of Louisiana does hereby reserve, and this lease shall be subject to, the imprescriptible right of surface use in the nature of a servitude in favor of the Department of Natural Resources, including its Offices and Commissions, for the sole purpose of implementing, constructing, servicing and maintaining approved coastal zone management and/or restoration projects. Utilization of any and all rights derived under this lease by the mineral lessee, its agents, successors or assigns, shall not interfere with nor hinder the reasonable surface use by the Department of Natural Resources, its Offices or Commissions, as hereinabove reserved.

Applicant: Robert A. Schroeder, Inc.

Bidder	Cash Payment	Price / Acre	Rental	Oil	Gas	Other



**MAIN PASS AREA, REVISED
PLAQUEMINES PARISH**



OFFICIAL COPY
OFFICE OF MINERAL RESOURCES
DEPT. OF NATURAL RESOURCES
DO NOT REMOVE

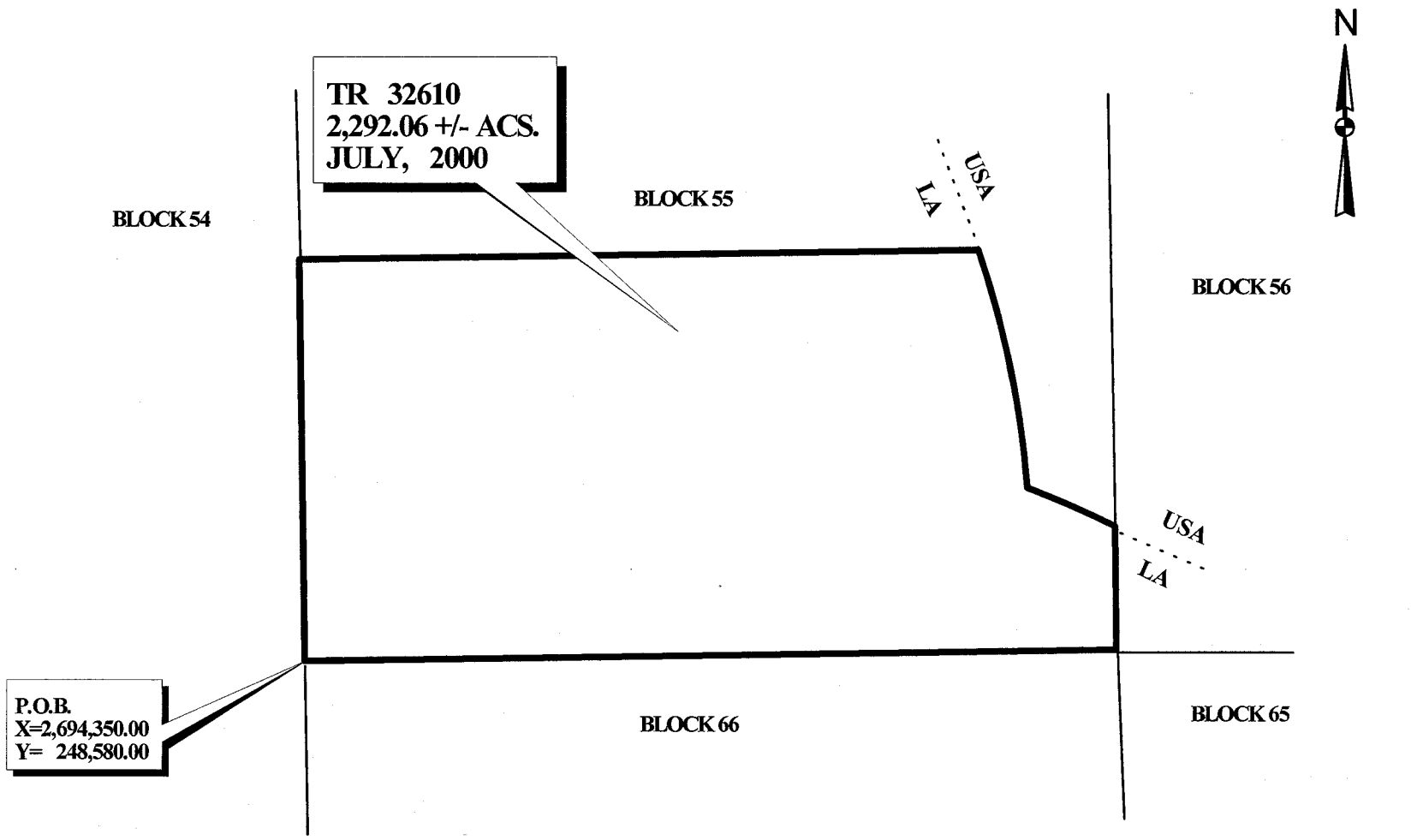
TRACT 32610 - PORTION OF BLOCK 55, MAIN PASS AREA, REVISED, Plaquemines Parish, Louisiana

That portion of Block 55, Main Pass Area, Revised, Plaquemines Parish, Louisiana, belonging to the State of Louisiana and not under mineral lease on July 12, 2000, described as follows: Beginning at a point having Coordinates of X = 2,694,350.00 and Y = 248,580.00, said point also being the Southwest corner of Block 55, Main Pass Area, Revised; thence North 7,375.00 feet along the West line of said Block 55 to a point having Coordinates of X = 2,694,350.00 and Y = 255,955.00; thence East 12,327.36 feet to a point having Coordinates of X = 2,706,677.36 and Y = 255,955.00, said point also being on the three mile boundary line as set out in the June, 1975, decree of the Supreme Court of the United States; thence along said three mile boundary line the following courses: on a curve to the right, having a radius of 18,240.60, an arc length of 4,467.07 feet to a point having Coordinates of X = 2,707,507.00 and Y = 251,577.00; on a curve to the right, having a radius of 18,240.60, an arc length of 1,751.94 feet to a point having Coordinates of X = 2,709,100.00 and Y = 250,849.48, said point also being on the East line of said Block 55; thence South 2,269.48 feet along the East line of said Block 55 to a point having Coordinates of X = 2,709,100.00 and Y = 248,580.00, said point also being the Southeast corner of said Block 55; thence West 14,750.00 feet along the South line of said Block 55 to the point of beginning, containing approximately 2,292.06 acres, as shown outlined in red on a plat on file in the Office of Mineral Resources, Department of Natural Resources, **LESS AND EXCEPT** that portion thereof, if any, which is more than three nautical miles from the coast line as determined by the Report of the Special Master in the litigation in the Supreme Court of the United States styled United States v. State of Louisiana et al No. 9 Original, said three mile line as set out in the June, 1975, decree of the Supreme Court. All bearings, distances and coordinates are based on Louisiana Coordinate System of 1927 (South Zone).

NOTE: The State of Louisiana does hereby reserve, and this lease shall be subject to, the imprescriptible right of surface use in the nature of a servitude in favor of the Department of Natural Resources, including its Offices and Commissions, for the sole purpose of implementing, constructing, servicing and maintaining approved coastal zone management and/or restoration projects. Utilization of any and all rights derived under this lease by the mineral lessee, its agents, successors or assigns, shall not interfere with nor hinder the reasonable surface use by the Department of Natural Resources, its Offices or Commissions, as hereinabove reserved.

Applicant: Robert A. Schroeder, Inc.

Bidder	Cash Payment	Price / Acre	Rental	Oil	Gas	Other



TR 32610
 2,292.06 +/- ACS.
 JULY, 2000

P.O.B.
 X=2,694,350.00
 Y= 248,580.00

**MAIN PASS AREA, REVISED
 PLAQUEMINES PARISH**

3000 0 3000 Feet

OFFICIAL COPY
 OFFICE OF MINERAL RESOURCES
 DEPT. OF NATURAL RESOURCES
 DO NOT REMOVE

TRACT 32611 - PORTION OF BLOCK 66, MAIN PASS AREA, REVISED, Plaquemines Parish, Louisiana

That portion of Block 66, Main Pass Area, Revised, Plaquemines Parish, Louisiana, belonging to the State of Louisiana and not under mineral lease on July 12, 2000, described as follows: Beginning at a point having Coordinates of X = 2,694,350.00 and Y = 248,580.00, said point also being the Northwest corner of Block 66, Main Pass Area, Revised; thence East 7,375.00 feet along the North line of said Block 66 to a point having Coordinates of X = 2,701,725.00 and Y = 248,580.00; thence South 2,781.93 feet to a point having Coordinates of X = 2,701,725.00 and Y = 245,798.07, said point also being on a boundary of State Lease No. 15840, as amended; thence Southwesterly and Southeasterly along said boundary of said State Lease No. 15840 and along the boundary of State Lease No. 15087, as amended, to a point having Coordinates of X = 2,701,725.00 and Y = 240,553.76; thence South approximately 3,200 feet to a point having a Coordinate of X = 2,701,725.00, said point also being on a Southern line of said Block 66; thence Northwesterly approximately 1,033 feet along said Western line of said Block 66 to a point having a Coordinate of X = 2,694,350.00, said point also being the Southwest corner of said Block 66; thence North approximately 4,511 feet along the West line of said Block 66 to the point of beginning, containing approximately 1,179 acres, as shown outlined in red on a plat on file in the Office of Mineral Resources, Department of Natural Resources. All bearings, distances and coordinates are based on Louisiana Coordinate System of 1927 (South Zone).

NOTE: The State of Louisiana does hereby reserve, and this lease shall be subject to, the imprescriptible right of surface use in the nature of a servitude in favor of the Department of Natural Resources, including its Offices and Commissions, for the sole purpose of implementing, constructing, servicing and maintaining approved coastal zone management and/or restoration projects. Utilization of any and all rights derived under this lease by the mineral lessee, its agents, successors or assigns, shall not interfere with nor hinder the reasonable surface use by the Department of Natural Resources, its Offices or Commissions, as hereinabove reserved.

Applicant: Robert A. Schroeder, Inc.

Bidder	Cash Payment	Price / Acre	Rental	Oil	Gas	Other

P.O.B.
X=2,694,350.00
Y= 248,580.00

BLOCK 55

BLOCK 54

BLOCK 66

TR 32611
1,179 +/- ACS.
JULY, 2000

BLOCK 84

SL 15840

SL 15087

SL 15087



MAIN PASS AREA, REV.
PLAQUEMINES PARISH



OFFICIAL COPY
OFFICE OF MINERAL RESOURCES
DEPT. OF NATURAL RESOURCES
DO NOT REMOVE

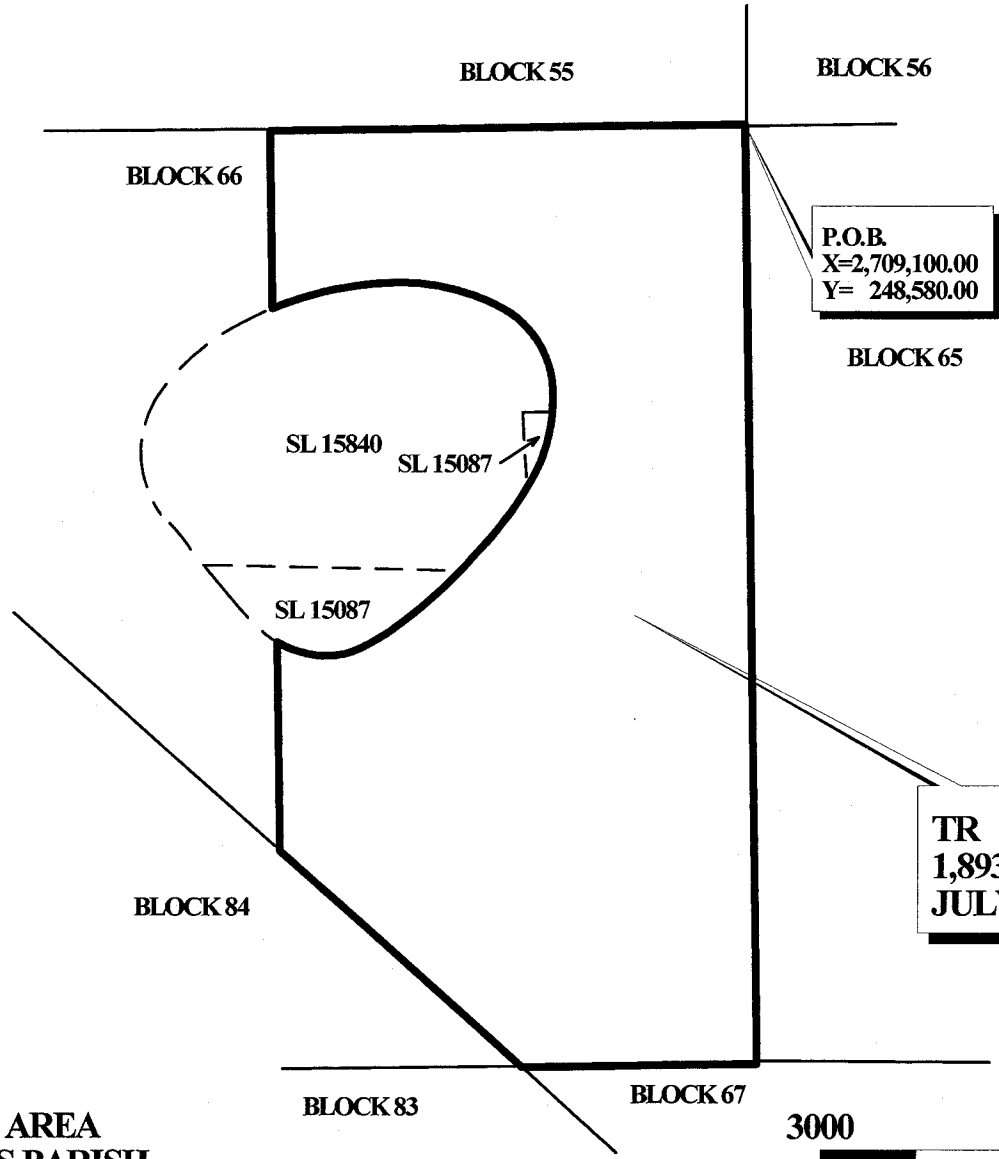
TRACT 32612 - PORTION OF BLOCK 66, MAIN PASS AREA, REVISED, Plaquemines Parish, Louisiana

That portion of Block 66, Main Pass Area, Revised, Plaquemines Parish, Louisiana, belonging to the State of Louisiana and not under mineral lease on July 12, 2000, described as follows: Beginning at a point having Coordinates of X = 2,709,100.00 and Y = 248,580.00, said point also being the Northeast corner of Block 66, Main Pass Area, Revised; thence South 14,750.00 feet along the East line of said Block 66 to a point having Coordinates of X = 2,709,100.00 and Y = 233,830.00, said point also being the Southeast corner of said Block 66; thence West approximately 3,647 feet along the South line of said Block 66 to a point having a Coordinate of Y = 233,830.00, said point also being a Southwest corner of said Block 66; thence Northwesterly approximately 5,070 feet along the South line of said Block 66 to a point having a Coordinate of X = 2,701,725.00; thence North approximately 3,288 feet to a point having Coordinates of X = 2,701,725.00 and Y = 240,553.76, said point also being on a boundary of State Lease No. 15087, as amended; thence Easterly, Northeasterly and Westerly along said boundary of said State Lease No. 15087 and along the boundary of State Lease No. 15840, as amended, to a point having Coordinates of X = 2,701,725.00 and Y = 245,798.07; thence North 2,781.93 feet to a point having Coordinates of X = 2,701,725.00 and Y = 248,580.00, said point also being on the North line of said Block 66; thence East 7,375.00 feet along said North line of said Block 66 to the point of beginning, containing approximately 1,893 acres, as shown outlined in red on a plat on file in the Office of Mineral Resources, Department of Natural Resources. All bearings, distances and coordinates are based on Louisiana Coordinate System of 1927 (South Zone).

NOTE: The State of Louisiana does hereby reserve, and this lease shall be subject to, the imprescriptible right of surface use in the nature of a servitude in favor of the Department of Natural Resources, including its Offices and Commissions, for the sole purpose of implementing, constructing, servicing and maintaining approved coastal zone management and/or restoration projects. Utilization of any and all rights derived under this lease by the mineral lessee, its agents, successors or assigns, shall not interfere with nor hinder the reasonable surface use by the Department of Natural Resources, its Offices or Commissions, as hereinabove reserved.

Applicant: Robert A. Schroeder, Inc.

Bidder	Cash Payment	Price / Acre	Rental	Oil	Gas	Other



P.O.B.
 X=2,709,100.00
 Y= 248,580.00

TR 32612
 1,893 +/- ACS.
 JULY, 2000

**MAIN PASS AREA
 PLAQUEMINES PARISH**

OFFICIAL COPY
 OFFICE OF MINERAL RESOURCES
 DEPT. OF NATURAL RESOURCES
 DO NOT REMOVE

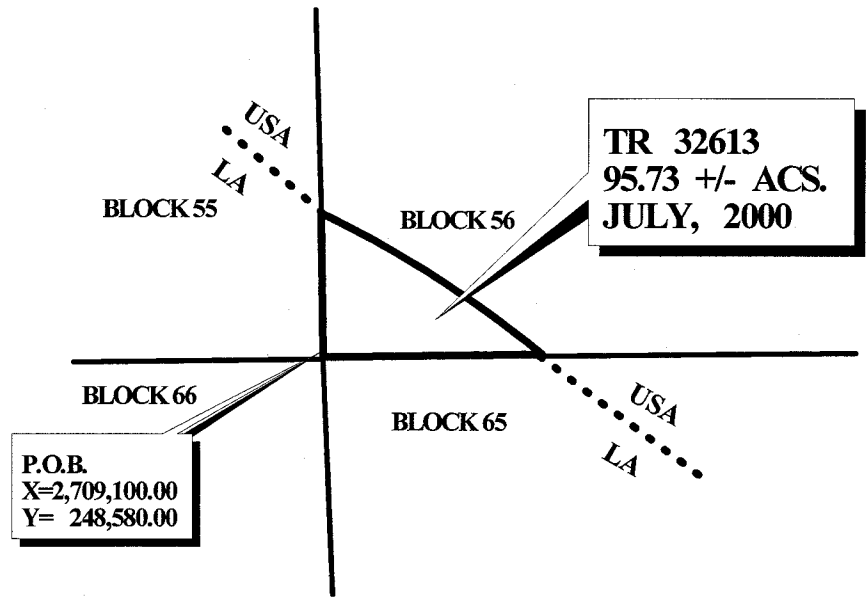
TRACT 32613 - PORTION OF BLOCK 56, MAIN PASS AREA, REVISED, Plaquemines Parish, Louisiana

That portion of Block 56, Main Pass Area, Revised, Plaquemines Parish, Louisiana, belonging to the State of Louisiana and not under mineral lease on July 12, 2000, described as follows: Beginning at a point having Coordinates of X = 2,709,100.00 and Y = 248,580.00, said point also being the Southwest corner of Block 56, Main Pass Area, Revised; thence North 2,269.48 feet along the West line of said Block 56 to a point having Coordinates of X = 2,709,100.00 and Y = 250,849.48, said point also being on the three mile boundary line as set out in the June, 1975, decree of the Supreme Court of the United States; thence on a curve to the right, having a radius of 18,240.60 and an arc length of 4,095.68 feet along said three mile boundary line to a point having Coordinates of X = 2,712,499.08 and Y = 248,580.00, said point also being on the South line of said Block 56; thence West 3,399.08 feet along the South line of said Block 56 to the point of beginning, containing approximately 95.73 acres, as shown outlined in red on a plat on file in the Office of Mineral Resources, Department of Natural Resources, **LESS AND EXCEPT** that portion thereof, if any, which is more than three nautical miles from the coast line as determined by the Report of the Special Master in the litigation in the Supreme Court of the United States styled United States v. State of Louisiana et al No. 9 Original, said three mile line as set out in the June, 1975, decree of the Supreme Court. All bearings, distances and coordinates are based on Louisiana Coordinate System of 1927 (South Zone).

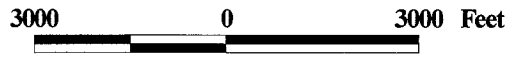
NOTE: The State of Louisiana does hereby reserve, and this lease shall be subject to, the imprescriptible right of surface use in the nature of a servitude in favor of the Department of Natural Resources, including its Offices and Commissions, for the sole purpose of implementing, constructing, servicing and maintaining approved coastal zone management and/or restoration projects. Utilization of any and all rights derived under this lease by the mineral lessee, its agents, successors or assigns, shall not interfere with nor hinder the reasonable surface use by the Department of Natural Resources, its Offices or Commissions, as hereinabove reserved.

Applicant: Robert A. Schroeder, Inc.

Bidder	Cash Payment	Price / Acre	Rental	Oil	Gas	Other



**MAIN PASS AREA, REVISED
PLAQUEMINES PARISH**



**OFFICIAL COPY
OFFICE OF MINERAL RESOURCES
DEPT. OF NATURAL RESOURCES
DO NOT REMOVE**

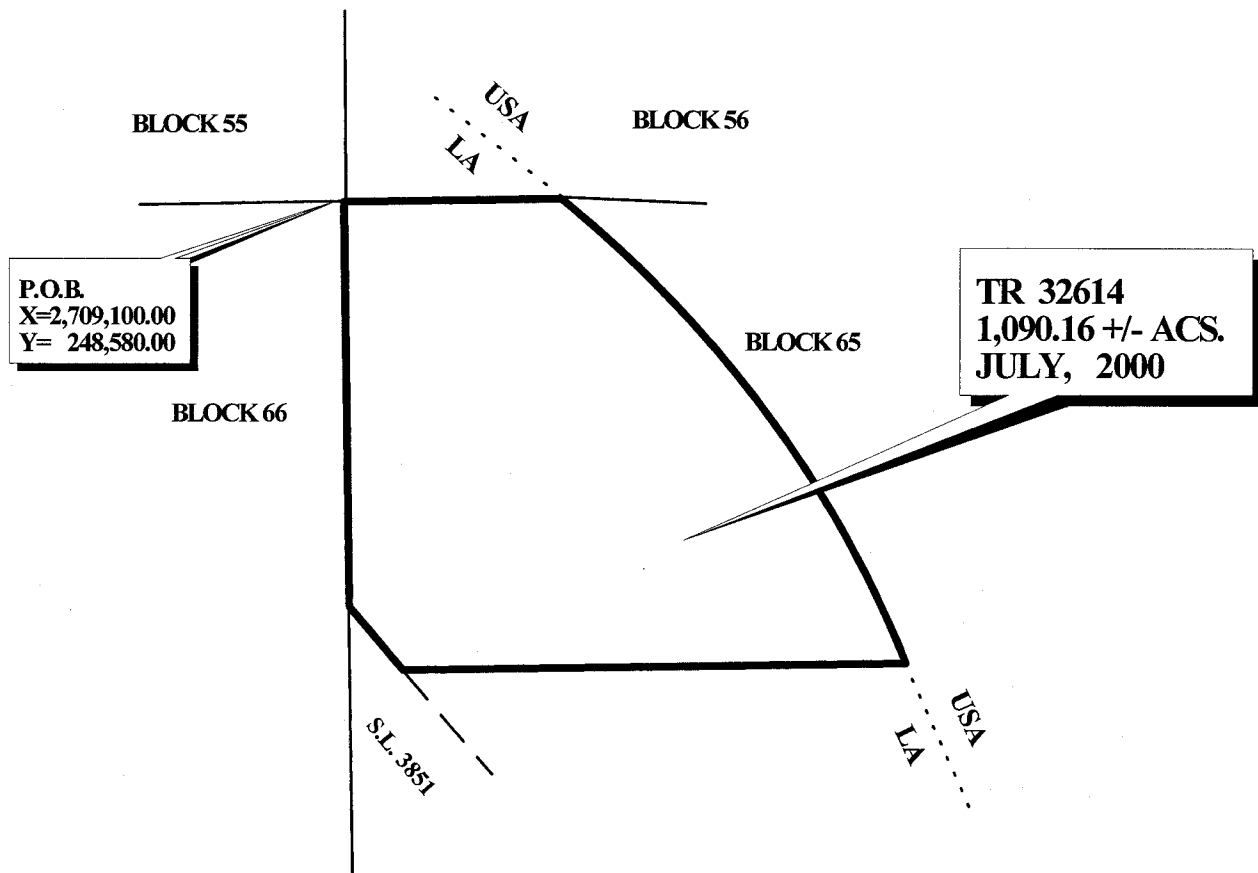
TRACT 32614 - PORTION OF BLOCK 65, MAIN PASS AREA, REVISED, Plaquemines Parish, Louisiana

That portion of Block 65, Main Pass Area, Revised, Plaquemines Parish, Louisiana, belonging to the State of Louisiana and not under mineral lease on July 12, 2000, described as follows: Beginning at a point having Coordinates of X = 2,709,100.00 and Y = 248,580.00, said point also being the Northwest corner of Block 65, Main Pass Area, Revised; thence East 3,399.08 feet along the North line of said Block 65 to a point having Coordinates of X = 2,712,499.08 and Y = 248,580.00, said point also being on the three mile boundary line as set out in the June, 1975, decree of the Supreme Court of the United States; thence on a curve to the right, having a radius of 18,240.60, an arc length of 9,150.70 feet along said three mile boundary line to a point having Coordinates of X = 2,717,752.96 and Y = 241,205.00; thence West 7,832.56 feet to a point having Coordinates of X = 2,709,920.40 and Y = 241,205.00, said point also being on the Eastern boundary of State Lease No. 3851, as amended; thence North 39 degrees 16 minutes 50 seconds West 1,295.80 feet along said Eastern boundary of said State Lease No. 3851 to a point having Coordinates of X = 2,709,100.00 and Y = 242,208.01, said point also being on the West line of said Block 65; thence North 6,371.99 feet along said West line of said Block 65 to the point of beginning, containing approximately 1,090.16 acres, as shown outlined in red on a plat on file in the Office of Mineral Resources, Department of Natural Resources, **LESS AND EXCEPT** that portion thereof, if any, which is more than three nautical miles from the coast line as determined by the Report of the Special Master in the litigation in the Supreme Court of the United States styled United States v. State of Louisiana et al No. 9 Original, said three mile line as set out in the June, 1975, decree of the Supreme Court. All bearings, distances and coordinates are based on Louisiana Coordinate System of 1927 (South Zone).

NOTE: The State of Louisiana does hereby reserve, and this lease shall be subject to, the imprescriptible right of surface use in the nature of a servitude in favor of the Department of Natural Resources, including its Offices and Commissions, for the sole purpose of implementing, constructing, servicing and maintaining approved coastal zone management and/or restoration projects. Utilization of any and all rights derived under this lease by the mineral lessee, its agents, successors or assigns, shall not interfere with nor hinder the reasonable surface use by the Department of Natural Resources, its Offices or Commissions, as hereinabove reserved.

Applicant: Robert A. Schroeder, Inc.

Bidder	Cash Payment	Price / Acre	Rental	Oil	Gas	Other



**MAIN PASS AREA, REVISED
PLAQUEMINES PARISH**



OFFICIAL COPY
OFFICE OF MINERAL RESOURCES
DEPT. OF NATURAL RESOURCES
DO NOT REMOVE

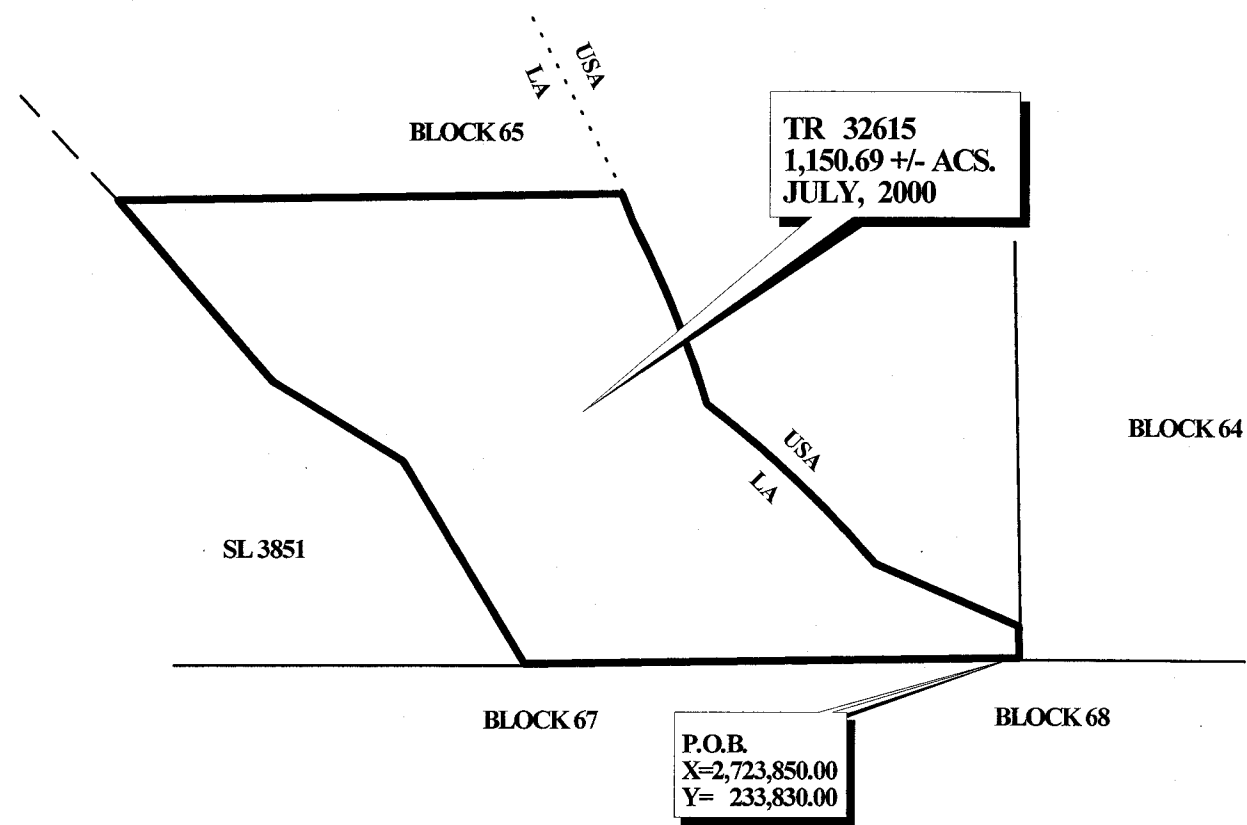
TRACT 32615 - PORTION OF BLOCK 65, MAIN PASS AREA, REVISED, Plaquemines Parish, Louisiana

That portion of Block 65, Main Pass Area, Revised, Plaquemines Parish, Louisiana, belonging to the State of Louisiana and not under mineral lease on July 12, 2000, described as follows: Beginning at a point having Coordinates of X = 2,723,850.00 and Y = 233,830.00, said point also being the Southeast corner of Block 65, Main Pass Area, Revised; thence West 7,699.02 feet along the South line of said Block 65 to a point having Coordinates of X = 2,716,150.98 and Y = 233,830.00, said point also being the Southeast corner of State Lease No. 3851, as amended; thence along the Eastern boundary of said State Lease No. 3851 the following courses: North 30 degrees 02 minutes 00 seconds West 3,715.60 feet to a point having Coordinates of X = 2,714,291.31 and Y = 237,046.72, thence North 57 degrees 40 minutes 10 seconds West 2,379.38 feet to a point having Coordinates of X = 2,712,280.79 and Y = 238,319.22, and North 39 degrees 16 minutes 50 seconds West 3,728.16 feet to a point having Coordinates of X = 2,709,920.40 and Y = 241,205.00; thence East 7,832.56 feet to a point having Coordinates of X = 2,717,752.96 and Y = 241,205.00, said point also being on the three mile boundary line as set out by the June, 1975, decree of the Supreme Court of the United States; thence along said three mile boundary line the following courses and distances: on a curve to the right, having a radius of 18,240.60, an arc length of 444.90 feet to a point having Coordinates of X = 2,717,908.00 and Y = 240,788.00; on a curve to the right, having a radius of 18,240.60, an arc length of 3,108.50 feet to a point having Coordinates of X = 2,719,022.00 and Y = 237,890.00; on a curve to the right, having a radius of 18,240.60, an arc length of 3,657.14 feet to a point having Coordinates of X = 2,721,632.00 and Y = 235,337.00; and South 65 degrees 34 minutes 04 seconds East 2,436.16 feet to a point having Coordinates of X = 2,723,850.00 and Y = 234,329.36, said point also being on the East line of said Block 65; thence South 499.36 feet on said East line of said Block 65 to the point of beginning, containing approximately 1,150.69 acres, as shown outlined in red on a plat on file in the Office of Mineral Resources, Department of Natural Resources, **LESS AND EXCEPT** that portion thereof, if any, which is more than three nautical miles from the coast line as determined by the Report of the Special Master in the litigation in the Supreme Court of the United States styled United States v. State of Louisiana et al No. 9 Original, said three mile line as set out in the June, 1975, decree of the Supreme Court. All bearings, distances and coordinates are based on Louisiana Coordinate System of 1927 (South Zone).

NOTE: The State of Louisiana does hereby reserve, and this lease shall be subject to, the imprescriptible right of surface use in the nature of a servitude in favor of the Department of Natural Resources, including its Offices and Commissions, for the sole purpose of implementing, constructing, servicing and maintaining approved coastal zone management and/or restoration projects. Utilization of any and all rights derived under this lease by the mineral lessee, its agents, successors or assigns, shall not interfere with nor hinder the reasonable surface use by the Department of Natural Resources, its Offices or Commissions, as hereinabove reserved.

Applicant: Robert A. Schroeder, Inc.

Bidder	Cash Payment	Price / Acre	Rental	Oil	Gas	Other



**MAIN PASS AREA, REVISED
PLAQUEMINES PARISH**



**OFFICIAL COPY
OFFICE OF MINERAL RESOURCES
DEPT. OF NATURAL RESOURCES
DO NOT REMOVE**