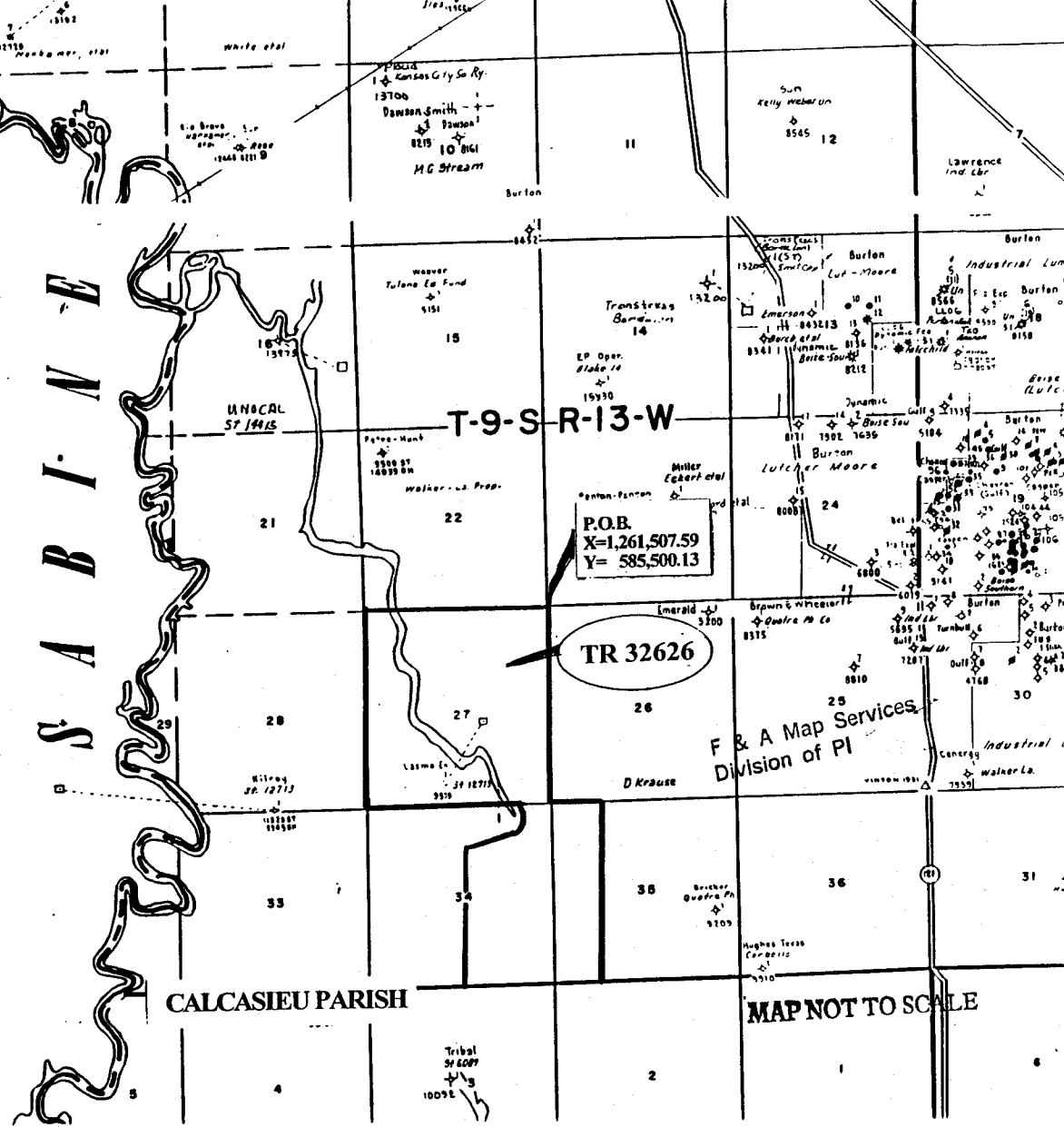


NOT TO BE USED WITH A PORTION BLD
FOR INFORMATIONAL PURPOSES ONLY!



S
A
B
I
N
E

T-9-S-R-13-W

P.O.B.
X=1,261,507.59
Y= 585,500.13

TR 32626

CALCASIEU PARISH

MAP NOT TO SCALE

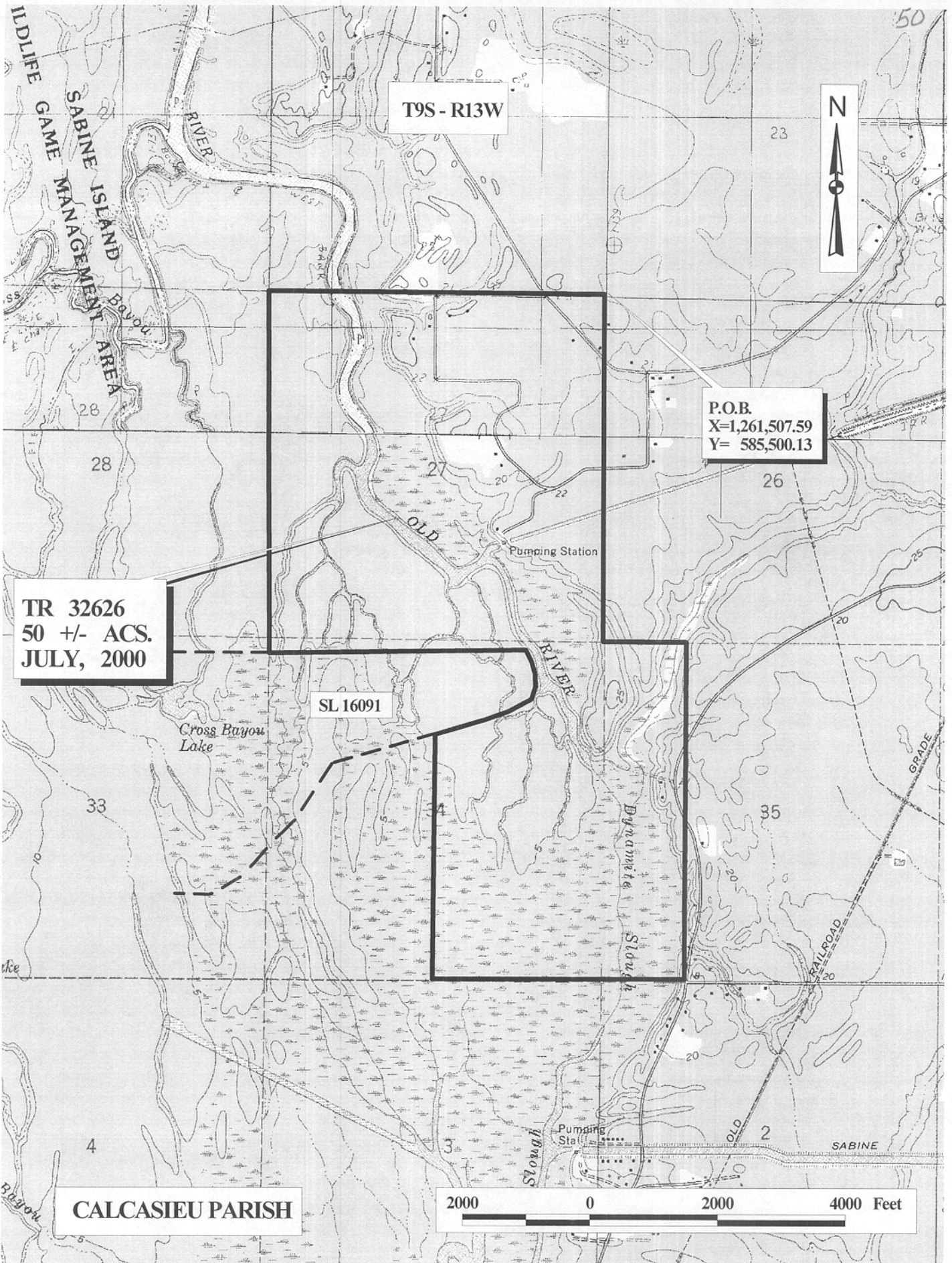
TRACT 32626 - Calcasieu Parish, Louisiana

All of the lands now or formerly constituting the beds and bottoms of all water bodies of every nature and description and all islands and other lands formed by accretion or reliction, except tax lands, owned by and not under mineral lease from the State of Louisiana on July 12, 2000, situated in Calcasieu Parish, Louisiana, within the following described boundaries: Beginning at a point having Coordinates of X = 1,261,507.59 and Y = 585,500.13; thence South 00 degrees 47 minutes 00 seconds West 5,385.90 feet to a point having Coordinates of X = 1,261,433.96 and Y = 580,114.73; thence South 88 degrees 59 minutes 49 seconds East 1,305.88 feet to a point having Coordinates of X = 1,262,739.64 and Y = 580,091.87; thence South 01 degrees 07 minutes 52 seconds West 5,222.31 feet to a point having Coordinates of X = 1,262,636.54 and Y = 574,870.58; thence North 89 degrees 00 minutes 54 seconds West 1,324.37 feet to a point having Coordinates of X = 1,261,312.37 and Y = 574,893.35; thence North 89 degrees 12 minutes 51 seconds West 2,628.58 feet to a point having Coordinates of X = 1,258,684.04 and Y = 574,929.40; thence North approximately 3,780 feet to a point on the Southern boundary of State Lease No. 16091 having a Coordinate of X = 1,258,684.04; thence Northeasterly, Northerly, and Northwesterly along the Southern and Eastern boundaries of said State Lease No. 16091 to its Northeast corner having a Coordinate of Y = 580,000.00; thence West approximately 4,030 feet along the North boundary of said State Lease No. 16091 to a point having Coordinates of X = 1,256,191.71 and Y = 580,000.00; thence North 00 degrees 32 minutes 37 seconds East 5,603.49 feet to a point having Coordinates of X = 1,256,244.88 and Y = 585,603.24; thence South 88 degrees 52 minutes 39 seconds East 5,263.72 feet to the point of beginning, **LESS AND EXCEPT** all those portions of State Lease No. 16091 that may lie within the above described tract, containing approximately 50 acres, as shown outlined in red on a plat on file in the Office of Mineral Resources, Department of Natural Resources. All bearings, distances and coordinates are based on Louisiana Coordinate System of 1927 (South Zone).

NOTE: This tract is located within the Sabine Island Wildlife Management Area. Any operations on said tract shall be coordinated with the Louisiana Department of Wildlife and Fisheries. Special Rules and Regulations have been promulgated by the Louisiana Department of Wildlife and Fisheries for the protection of the game and wildlife for some management areas. Any lease awarded by the Board on said tract shall be subject to any applicable Rules and Regulations of said management area. Copies of these Rules and Regulations may be obtained from the Louisiana Department of Wildlife and Fisheries through the Assistant Secretary, Office of Wildlife, upon request.

Applicant: Cash River Exploration, Inc.

Bidder	Cash Payment	Price / Acre	Rental	Oil	Gas	Other



T9S - R13W

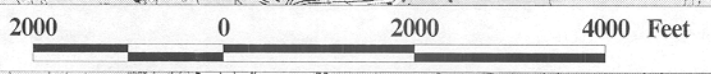


P.O.B.
X=1,261,507.59
Y= 585,500.13

TR 32626
50 +/- ACS.
JULY, 2000

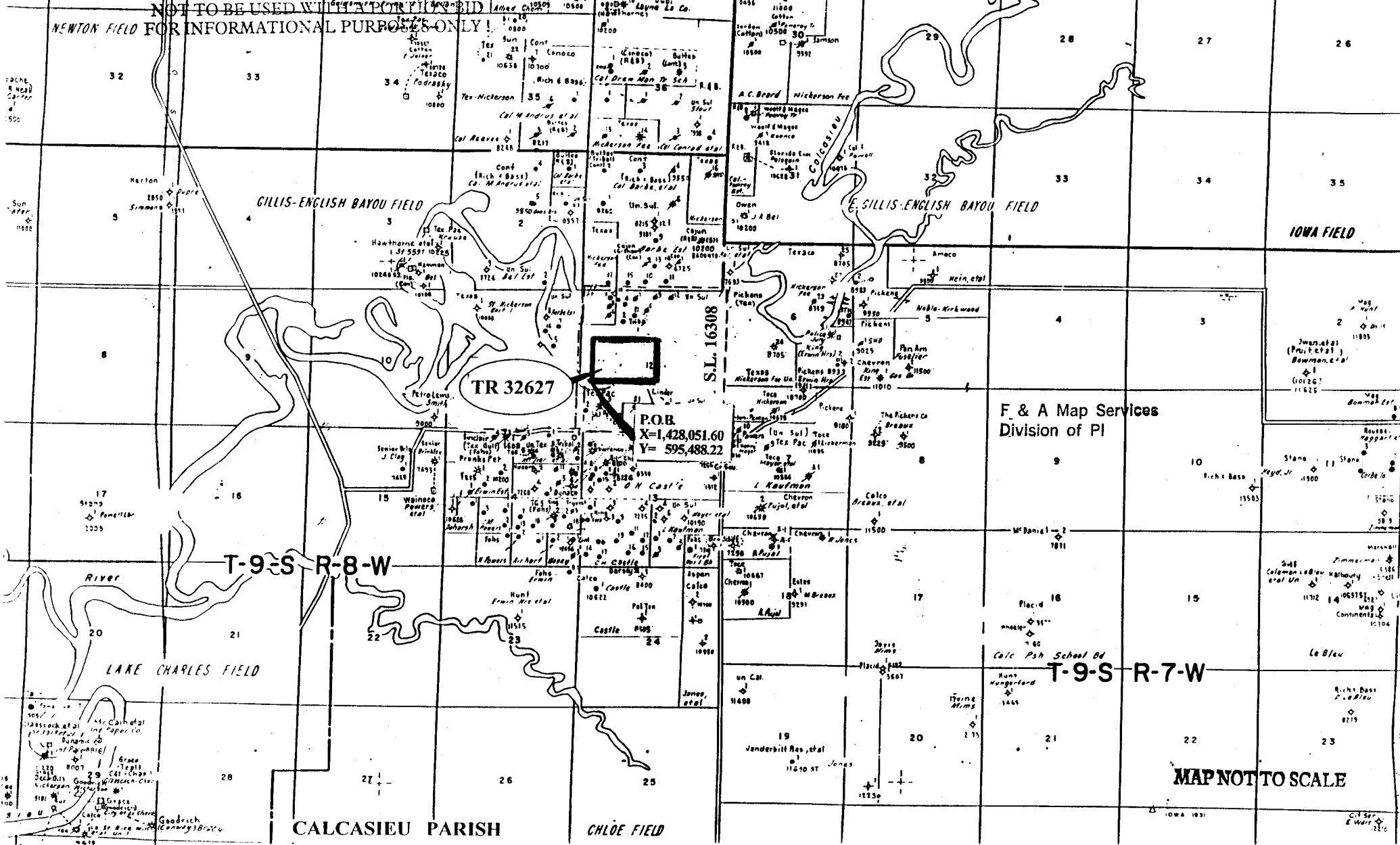
SL 16091

CALCASIEU PARISH



OFFICIAL COPY
OFFICE OF MINERAL RESOURCES
DEPT. OF NATURAL RESOURCES
DO NOT REMOVE

NOT TO BE USED WITH A PORTULAN BID
FOR INFORMATIONAL PURPOSES ONLY!



F & A Map Services
Division of PI

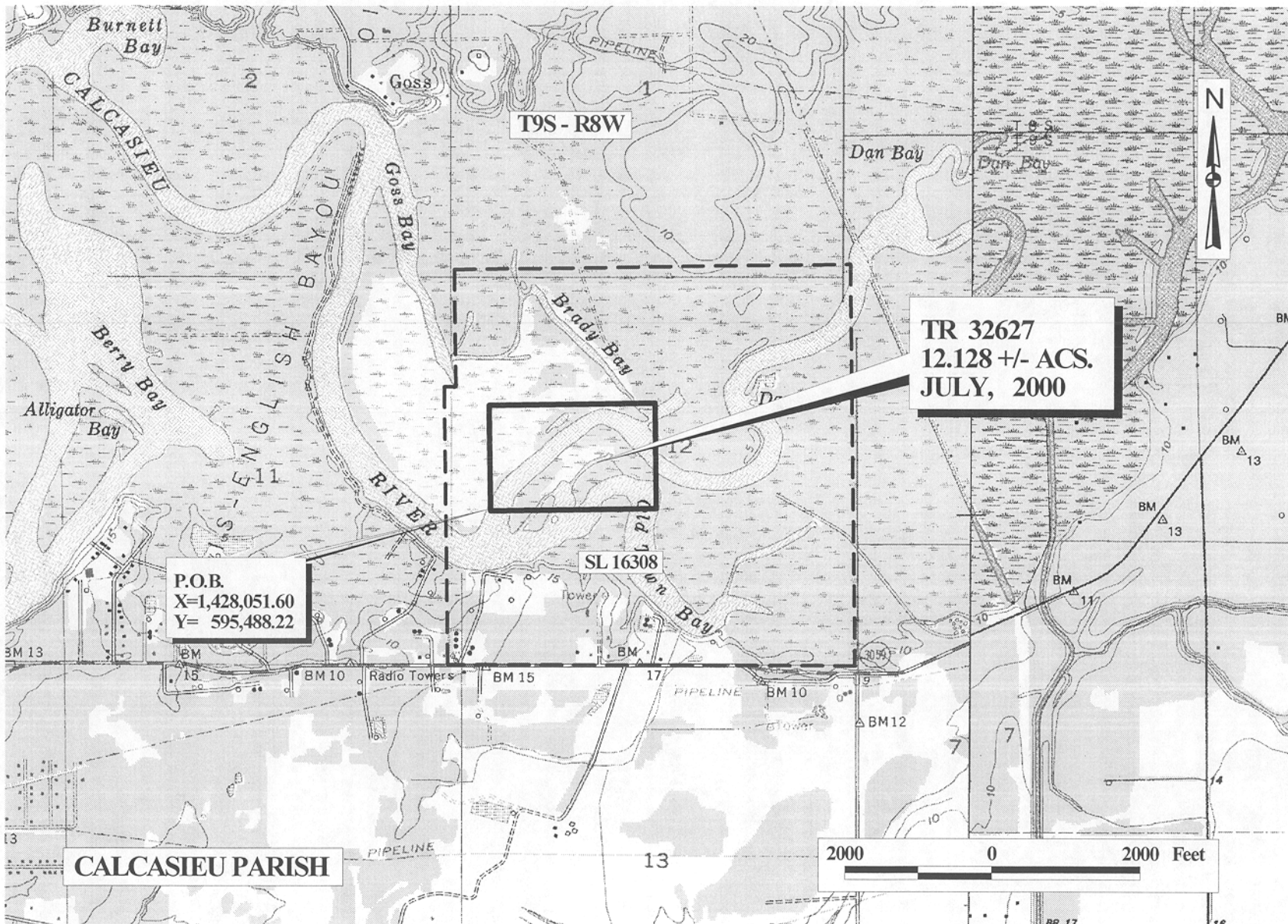
MAP NOT TO SCALE

TRACT 32627 - Calcasieu Parish, Louisiana

All of the lands now or formerly constituting the beds and bottoms of all water bodies of every nature and description and all islands and other lands formed by accretion or reliction, except tax lands, owned by and not under mineral lease from the State of Louisiana on July 12, 2000, situated in Calcasieu Parish, Louisiana, within the following described boundaries: Beginning at a point within the boundary of State Lease No. 16308 having Coordinates of X = 1,428,051.60 and Y = 595,488.22; thence North 1,450.27 feet to a point having Coordinates of X = 1,428,051.60 and Y = 596,938.49; thence East 2,236.88 feet to a point having Coordinates of X = 1,430,288.48 and Y = 596,938.49; thence South 1,450.27 feet to a point having Coordinates of X = 1,430,288.48 and Y = 595,488.22; thence West 2,236.88 feet to the point of beginning, **LESS AND EXCEPT** all that portion of State Lease No. 16308 lying within the above described tract, containing approximately **12.128 acres**, as shown outlined in red on a plat on file in the Office of Mineral Resources, Department of Natural Resources. All bearings, distances and coordinates are based on Louisiana Coordinate System of 1927 (South Zone).

Applicant: Basin Properties, Inc.

Bidder	Cash Payment	Price / Acre	Rental	Oil	Gas	Other



OFFICIAL COPY
 OFFICE OF MINERAL RESOURCES
 DEPT. OF NATURAL RESOURCES
 DO NOT REMOVE