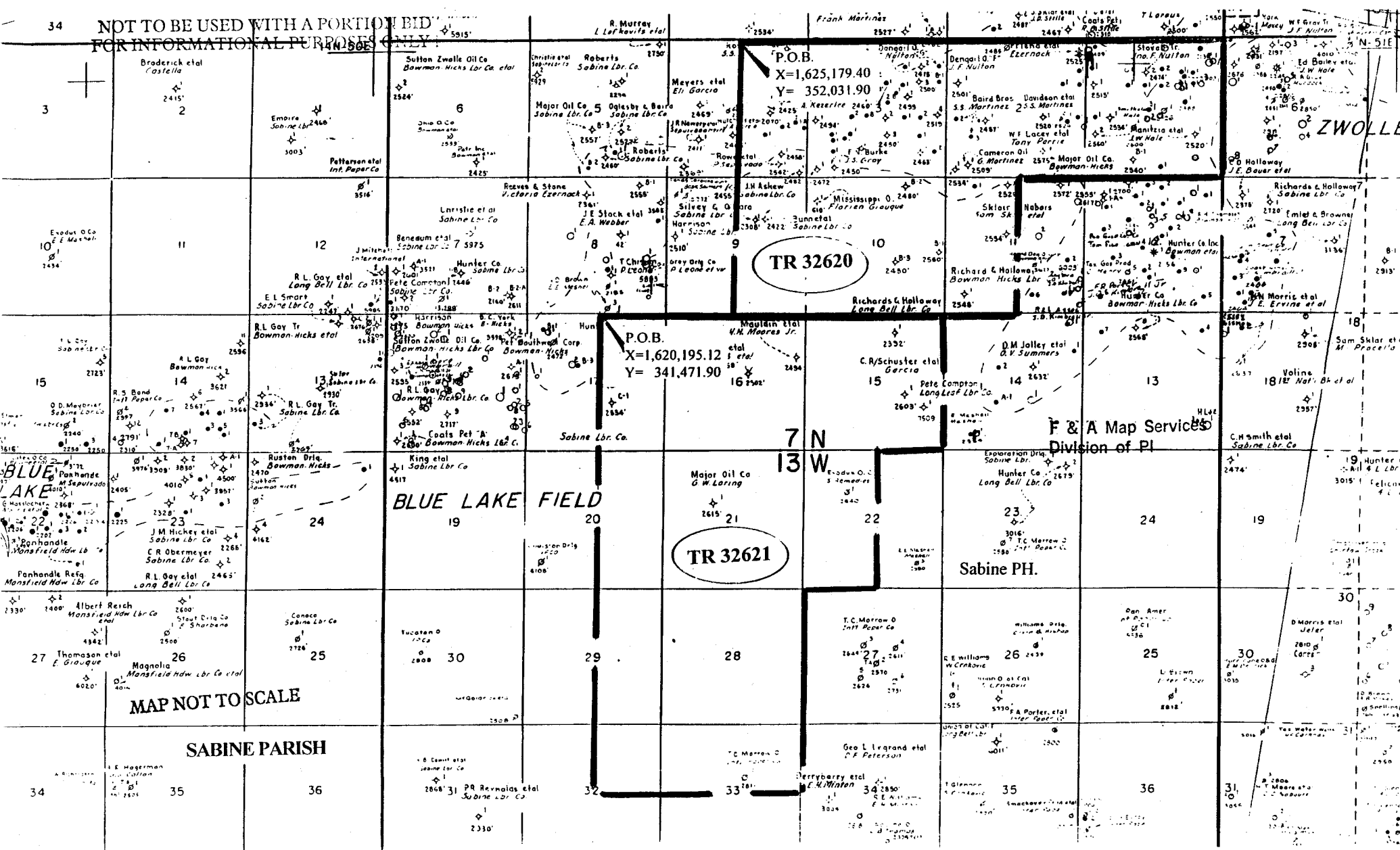


NOT TO BE USED WITH A PORTION BID FOR INFORMATIONAL PURPOSES ONLY



TR 32620

P.O.B. X=1,620,195.12 Y=341,471.90

TR 32621

ZWOLLE

7 N 13 W

F & A Map Services Division of PI

MAP NOT TO SCALE

SABINE PARISH

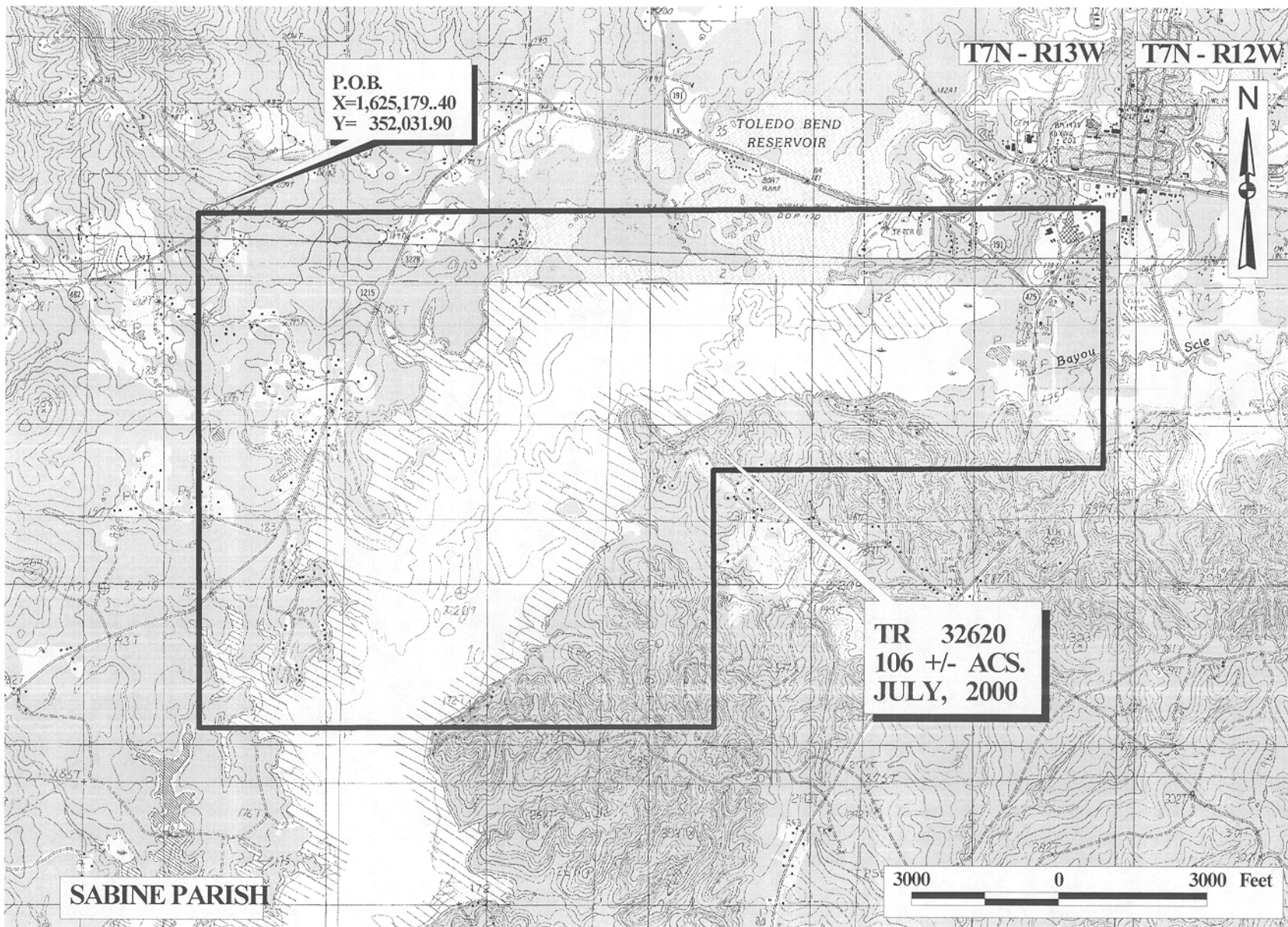
**TRACT 32620 - Sabine Parish, Louisiana**

All of the lands now or formerly constituting the beds and bottoms of all water bodies of every nature and description and all islands and other lands formed by accretion or reliction, except tax lands, owned by and not under mineral lease from the State of Louisiana on July 12, 2000, situated in Sabine Parish, Louisiana, within the following described boundaries: Beginning at a point having Coordinates of X = 1,625,179.40 and Y = 352,031.90; thence East 7,920.00 feet to a point having Coordinates of X = 1,633,099.40 and Y = 352,031.90; thence North 89 degrees 42 minutes 47 seconds East 10,414.93 feet to a point having Coordinates of X = 1,643,514.20 and Y = 352,084.04; thence South 5,332.14 feet to a point having Coordinates of X = 1,643,514.20 and Y = 346,751.90; thence South 89 degrees 48 minutes 28 seconds West 7,916.05 feet to a point having Coordinates of X = 1,635,598.20 and Y = 346,725.33; thence South 00 degrees 06 minutes 46 seconds East 5,268.78 feet to a point having Coordinates of X = 1,635,608.56 and Y = 341,456.56; thence North 89 degrees 54 minutes 57 seconds West 10,439.28 feet to a point having Coordinates of X = 1,625,169.29 and Y = 341,471.90; thence North 00 degrees 03 minutes 17 seconds East 10,506.01 feet to the point of beginning, containing approximately 106 acres, as shown outlined in red on a plat on file in the Office of Mineral Resources, Department of Natural Resources. All bearings, distances and coordinates are based on Louisiana Coordinate System of 1927 (North Zone).

NOTE: This tract is located within the Sabine Wildlife Management Area. Any operations on said tract shall be coordinated with the Louisiana Department of Wildlife and Fisheries. Special Rules and Regulations have been promulgated by the Louisiana Department of Wildlife and Fisheries for the protection of the game and wildlife for some management areas. Any lease awarded by the Board on said tract shall be subject to any applicable Rules and Regulations of said management area. Copies of these Rules and Regulations may be obtained from the Louisiana Department of Wildlife and Fisheries through the Assistant Secretary, Office of Wildlife, upon request.

Applicant: Edward E. Willis

Bidder	Cash Payment	Price / Acre	Rental	Oil	Gas	Other



OFFICIAL COPY  
OFFICE OF MINERAL RESOURCES  
DEPT. OF NATURAL RESOURCES  
DO NOT REMOVE

**TRACT 32621 - Sabine Parish, Louisiana**

All of the lands now or formerly constituting the beds and bottoms of all water bodies of every nature and description and all islands and other lands formed by accretion or reliction, except tax lands, owned by and not under mineral lease from the State of Louisiana on July 12, 2000, situated in Sabine Parish, Louisiana, within the following described boundaries: Beginning at a point having Coordinates of X = 1,620,195.12 and Y = 341,471.90; thence East 4,974.17 feet to a point having Coordinates of X = 1,625,169.29 and Y = 341,471.90; thence South 89 degrees 54 minutes 57 seconds East 7,930.12 feet to a point having Coordinates of X = 1,633,099.40 and Y = 341,460.25; thence South 5,268.35 feet to a point having Coordinates of X = 1,633,099.40 and Y = 336,191.90; thence West 2,613.42 feet to a point having Coordinates of X = 1,630,485.98 and Y = 336,191.90; thence South 5,280.00 feet to a point having Coordinates of X = 1,630,485.98 and Y = 330,911.90; thence West 2,666.58 feet to a point having Coordinates of X = 1,627,819.40 and Y = 330,911.90; thence South 7,920.00 feet to a point having Coordinates of X = 1,627,819.40 and Y = 322,991.90; thence West 7,624.28 feet to a point having Coordinates of X = 1,620,195.12 and Y = 322,991.90; thence North 18,480.00 feet to the point of beginning, containing approximately **135 acres**, as shown outlined in red on a plat on file in the Office of Mineral Resources, Department of Natural Resources. All bearings, distances and coordinates are based on Louisiana Coordinate System of 1927 (North Zone).

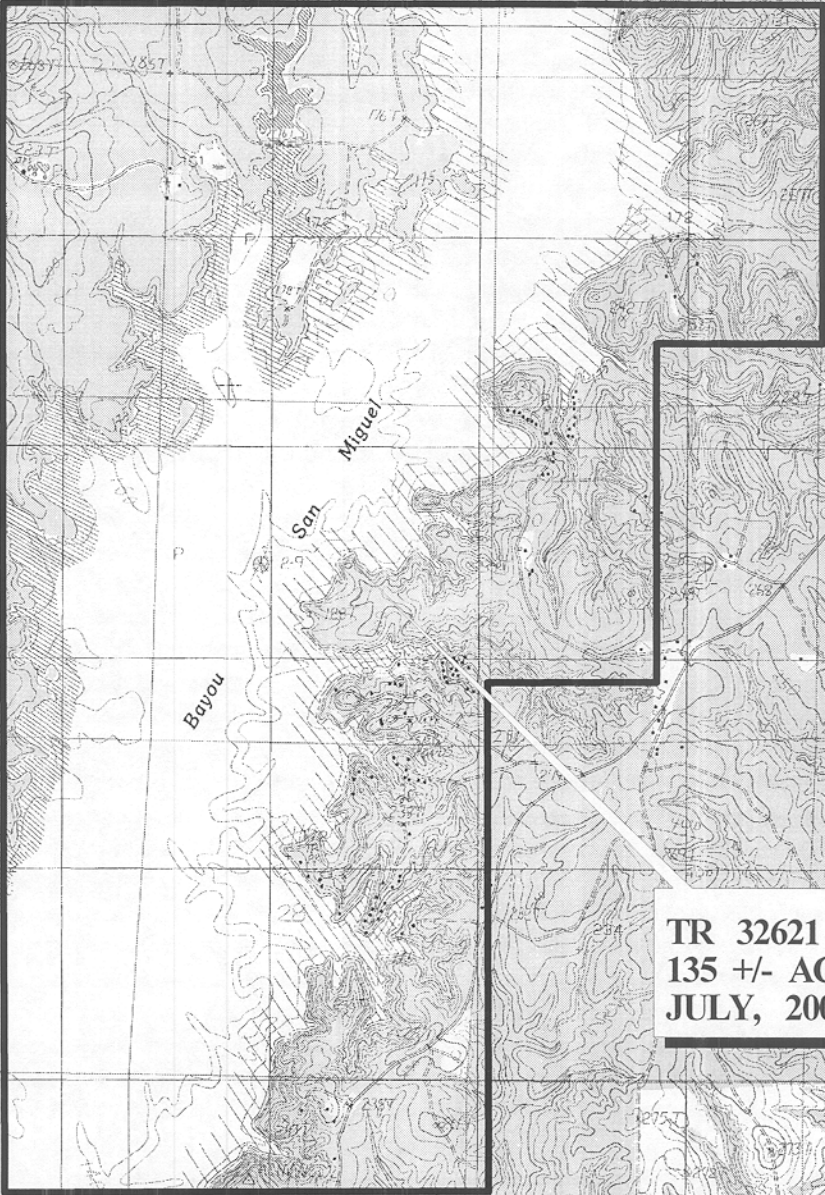
NOTE: This tract is located within the Sabine Wildlife Management Area. Any operations on said tract shall be coordinated with the Louisiana Department of Wildlife and Fisheries. Special Rules and Regulations have been promulgated by the Louisiana Department of Wildlife and Fisheries for the protection of the game and wildlife for some management areas. Any lease awarded by the Board on said tract shall be subject to any applicable Rules and Regulations of said management area. Copies of these Rules and Regulations may be obtained from the Louisiana Department of Wildlife and Fisheries through the Assistant Secretary, Office of Wildlife, upon request.

Applicant: Edward E. Willis

Bidder	Cash Payment	Price / Acre	Rental	Oil	Gas	Other

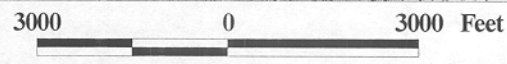
T7N - R13W

P.O.B.  
X=1,620,195.12  
Y= 341,471.90



TR 32621  
135 +/- ACS.  
JULY, 2000

SABINE PARISH



TRACT 32622 - WITHDRAWN PER APPLICANT

TRACT 32623 - WITHDRAWN PER APPLICANT