

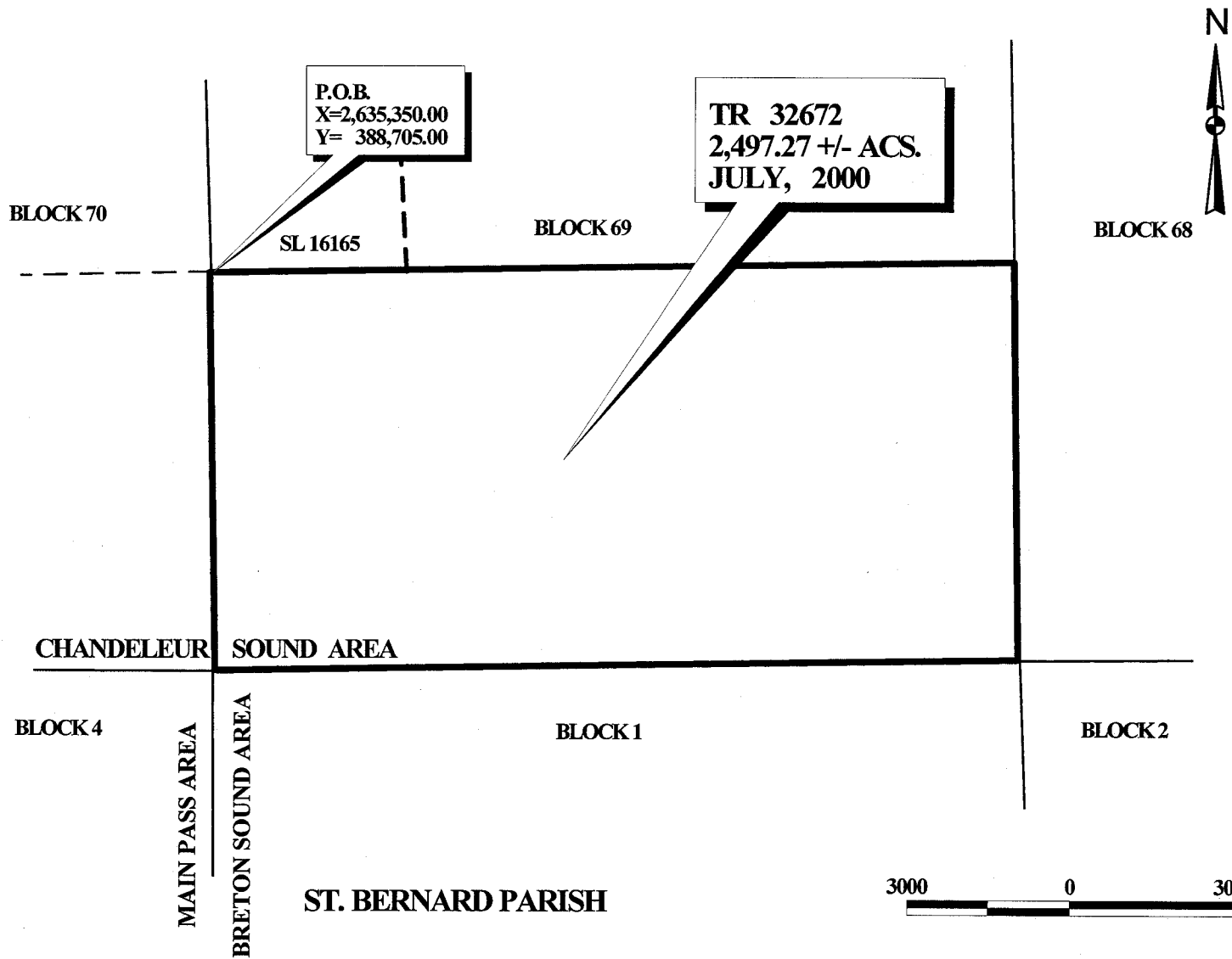
**TRACT 32672 - PORTION OF BLOCK 69, CHANDELEUR SOUND AREA, St. Bernard Parish, Louisiana**

All of the lands now or formerly constituting the beds and bottoms of all water bodies of every nature and description and all islands and other lands formed by accretion or reliction, except tax lands, belonging to the State of Louisiana and not under mineral lease on July 12, 2000, situated in St. Bernard Parish, Louisiana, and more particularly described as follows: Beginning at a point on the West line of Block 69, Chandeleur Sound Area, being the Southwest corner of State Lease No. 16165 having Coordinates of X = 2,635,350.00 and Y = 388,705.00; thence East 3,600.00 feet along the South line of said State Lease No. 16165 to its Southeast corner having Coordinates of X = 2,638,950.00 and Y = 388,705.00; thence East 11,150.00 feet to a point on the East line of said Block 69 having Coordinates of X = 2,650,100.00 and Y = 388,705.00; thence South 7,375.00 feet along the East line of said Block 69 to its Southeast corner having Coordinates of X = 2,650,100.00 and Y = 381,330.00; thence West 14,750.00 feet along the South line of said Block 69 to its Southwest corner having Coordinates of X = 2,635,350.00 and Y = 381,330.00; thence North 7,375.00 feet along the West line of said Block 69 to the point of beginning, containing approximately 2,497.27 acres, as shown outlined in red on a plat on file in the Office of Mineral Resources, Department of Natural Resources. All bearings, distances and coordinates are based on Louisiana Coordinate System of 1927 (South Zone).

NOTE: The State of Louisiana does hereby reserve, and this lease shall be subject to, the imprescriptible right of surface use in the nature of a servitude in favor of the Department of Natural Resources, including its Offices and Commissions, for the sole purpose of implementing, constructing, servicing and maintaining approved coastal zone management and/or restoration projects. Utilization of any and all rights derived under this lease by the mineral lessee, its agents, successors or assigns, shall not interfere with nor hinder the reasonable surface use by the Department of Natural Resources, its Offices or Commissions, as hereinabove reserved.

Applicant: Specter Exploration, Inc.

Bidder	Cash Payment	Price / Acre	Rental	Oil	Gas	Other



OFFICIAL COPY  
 OFFICE OF MINERAL RESOURCES  
 DEPT. OF NATURAL RESOURCES  
 DO NOT REMOVE

161

**TRACT 32673 - PORTION OF BLOCK 51, CHANDELEUR SOUND AREA, St. Bernard Parish, Louisiana**

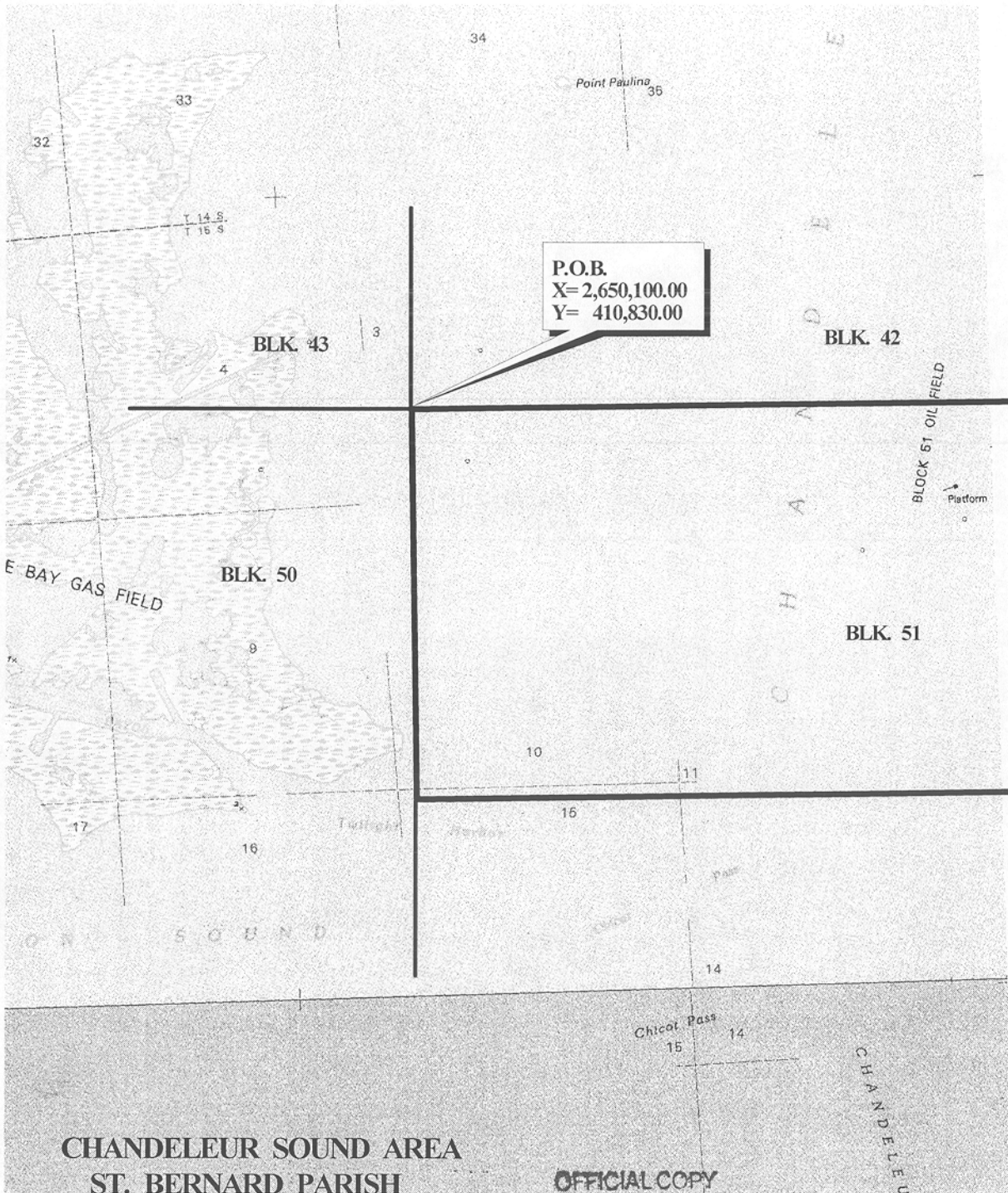
All of the lands now or formerly constituting the beds and bottoms of all water bodies of every nature and description and all islands and other lands formed by accretion or reliction, except tax lands, belonging to the State of Louisiana and not under mineral lease on July 12, 2000, situated in St. Bernard Parish, Louisiana, and more particularly described as follows: Beginning at the Northwest corner of Block 51, Chandeleur Sound Area, having Coordinates of X = 2,650,100.00 and Y = 410,830.00; thence South 7,375.00 feet on the West line of said Block 51 to a point having Coordinates of X = 2,650,100.00 and Y = 403,455.00; thence East 14,750.00 feet to a point on the East line of said Block 51 having Coordinates of X = 2,664,850.00 and Y = 403,455.00; thence North 7,375.00 feet along the East line of said Block 51 to its Northeast corner having Coordinates of X = 2,664,850.00 and Y = 410,830.00; thence West 14,750.00 feet on the North line of said Block 51 to the point of beginning, containing approximately 2,448 acres, as shown outlined in red on a plat on file in the Office of Mineral Resources, Department of Natural Resources. All bearings, distances and coordinates are based on Louisiana Coordinate System of 1927 (South Zone).

NOTE: The above tract is located in or near an oyster restricted area and all operations in such area must be conducted in strict conformity with the stipulations and/or regulations of the Louisiana Department of Wildlife and Fisheries.

NOTE: The State of Louisiana does hereby reserve, and this lease shall be subject to, the imprescriptible right of surface use in the nature of a servitude in favor of the Department of Natural Resources, including its Offices and Commissions, for the sole purpose of implementing, constructing, servicing and maintaining approved coastal zone management and/or restoration projects. Utilization of any and all rights derived under this lease by the mineral lessee, its agents, successors or assigns, shall not interfere with nor hinder the reasonable surface use by the Department of Natural Resources, its Offices or Commissions, as hereinabove reserved.

Applicant: Specter Exploration, Inc.

Bidder	Cash Payment	Price / Acre	Rental	Oil	Gas	Other



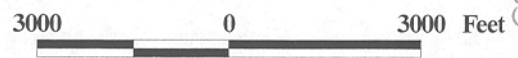
P.O.B.  
X= 2,650,100.00  
Y= 410,830.00

TR 32673  
2448 +/- ACS.  
JULY, 2000



CHANDELEUR SOUND AREA  
ST. BERNARD PARISH

OFFICIAL COPY  
OFFICE OF MINERAL RESOURCES  
DEPT. OF NATURAL RESOURCES  
DO NOT REMOVE



163

**TRACT 32674 - PORTION OF BLOCK 51, CHANDELEUR SOUND AREA, St. Bernard Parish, Louisiana**

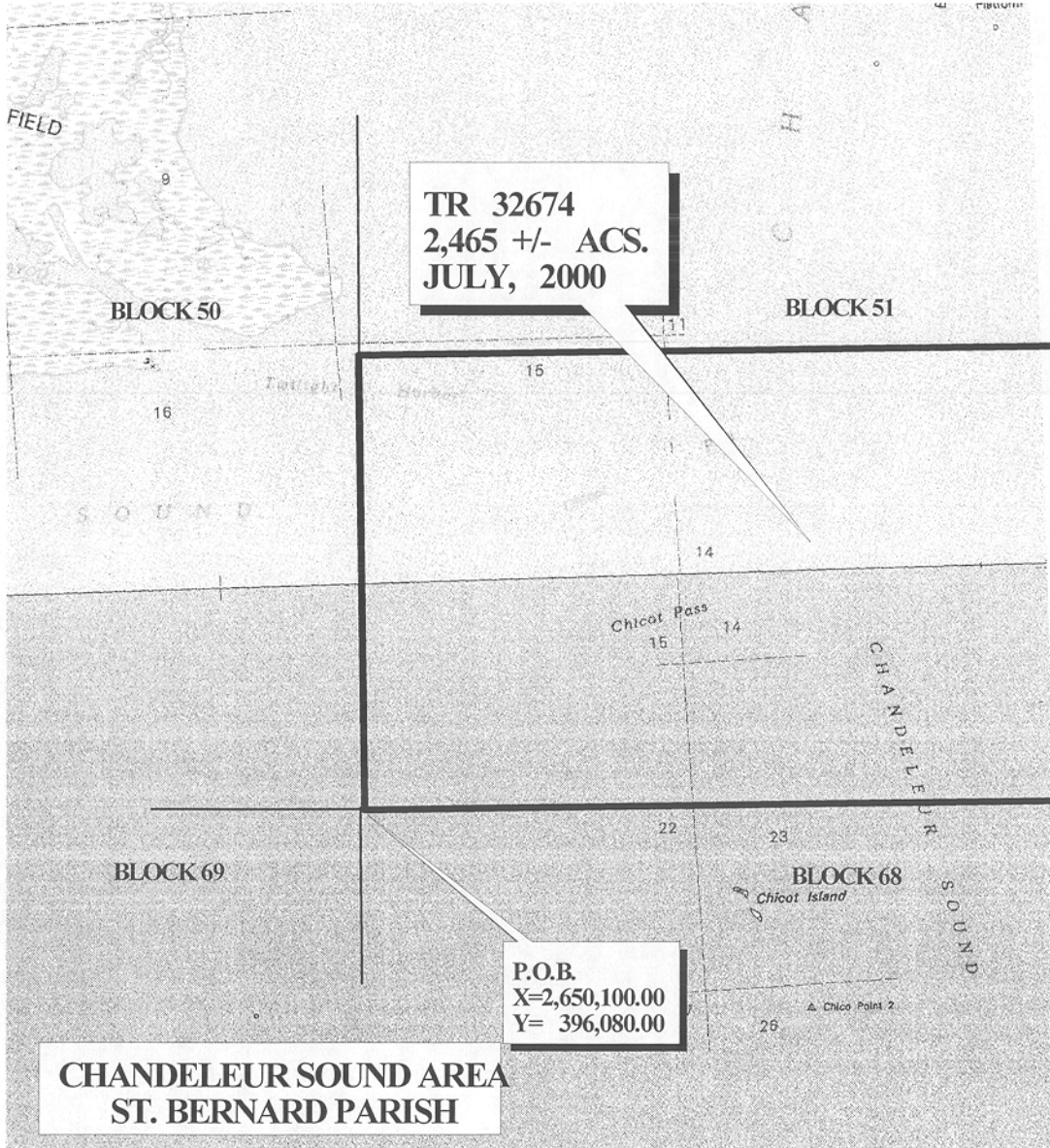
All of the lands now or formerly constituting the beds and bottoms of all water bodies of every nature and description and all islands and other lands formed by accretion or reliction, except tax lands, belonging to the State of Louisiana and not under mineral lease on July 12, 2000, situated in St. Bernard Parish, Louisiana, and more particularly described as follows: Beginning at the Southwest corner of Block 51, Chandeleur Sound Area, having Coordinates of X = 2,650,100.00 and Y = 396,080.00; thence East 14,750.00 feet along the South line of said Block 51 to its Southeast corner having Coordinates of X = 2,664,850.00 and Y = 396,080.00; thence North 7,375.00 feet on the East line of said Block 51 to a point having Coordinates of X = 2,664,850.00 and Y = 403,455.00; thence West 14,750.00 feet to a point on the West line of said Block 51 having Coordinates of X = 2,650,100.00 and Y = 403,455.00; thence South 7,375.00 feet along the West line of said Block 51 to the point of beginning, containing approximately 2,465 acres, as shown outlined in red on a plat on file in the Office of Mineral Resources, Department of Natural Resources. All bearings, distances and coordinates are based on Louisiana Coordinate System of 1927 (South Zone).

NOTE: The above tract is located in or near an oyster restricted area and all operations in such area must be conducted in strict conformity with the stipulations and/or regulations of the Louisiana Department of Wildlife and Fisheries.

NOTE: The State of Louisiana does hereby reserve, and this lease shall be subject to, the imprescriptible right of surface use in the nature of a servitude in favor of the Department of Natural Resources, including its Offices and Commissions, for the sole purpose of implementing, constructing, servicing and maintaining approved coastal zone management and/or restoration projects. Utilization of any and all rights derived under this lease by the mineral lessee, its agents, successors or assigns, shall not interfere with nor hinder the reasonable surface use by the Department of Natural Resources, its Offices or Commissions, as hereinabove reserved.

Applicant: Specter Exploration, Inc.

Bidder	Cash Payment	Price / Acre	Rental	Oil	Gas	Other



**TR 32674**  
**2,465 +/- ACS.**  
**JULY, 2000**

**P.O.B.**  
**X=2,650,100.00**  
**Y= 396,080.00**

**CHANDELEUR SOUND AREA**  
**ST. BERNARD PARISH**



OFFICIAL COPY  
 OFFICE OF MINERAL RESOURCES  
 DEPT. OF NATURAL RESOURCES  
 DO NOT REMOVE

165