

TRACT 32669 - PORTION OF BLOCK 50, CHANDELEUR SOUND AREA, St. Bernard Parish, Louisiana

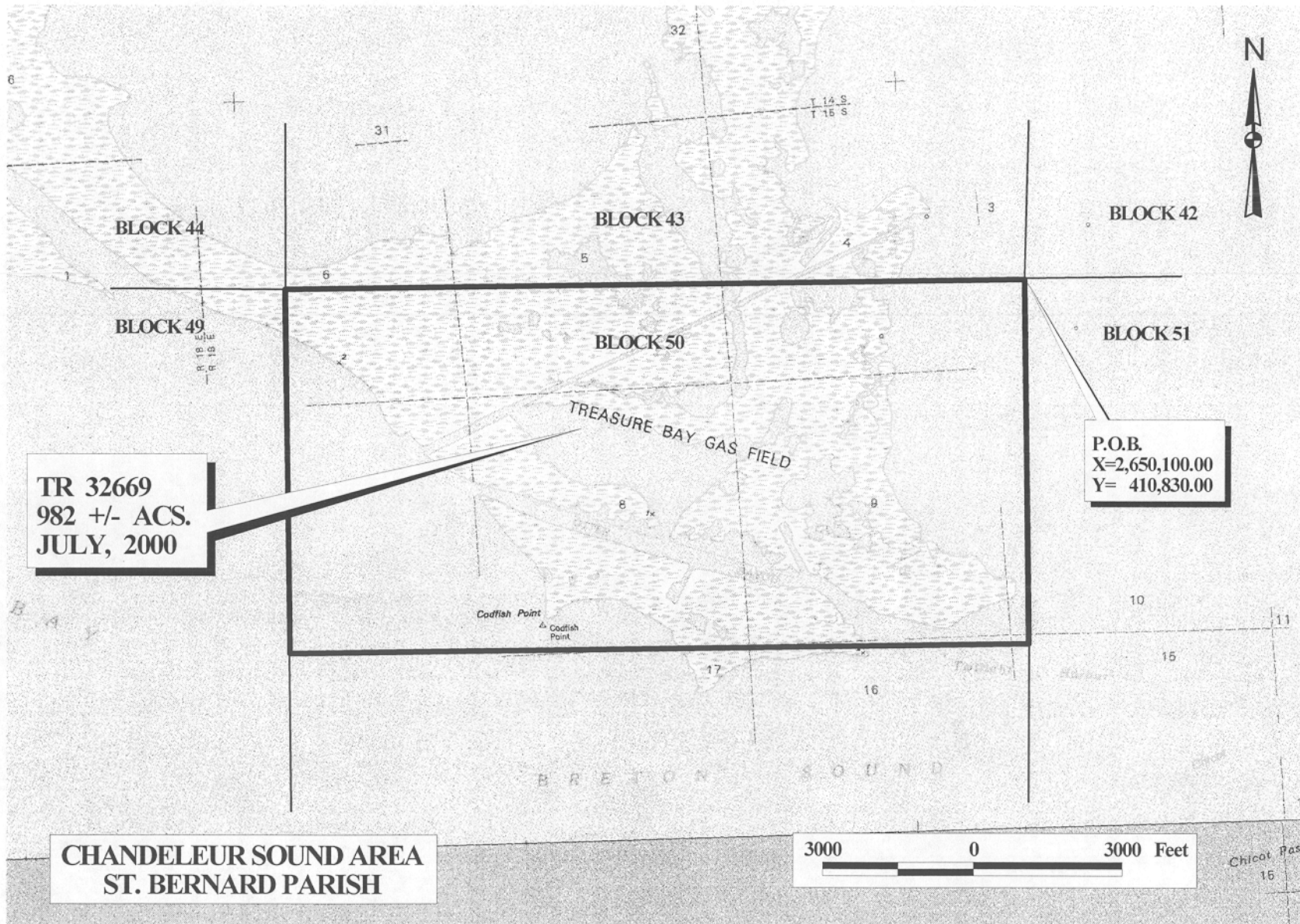
All of the lands now or formerly constituting the beds and bottoms of all water bodies of every nature and description and all islands and other lands formed by accretion or reliction, except tax lands, belonging to the State of Louisiana and not under mineral lease on July 12, 2000, situated in St. Bernard Parish, Louisiana, and more particularly described as follows: Beginning at the Northeast corner of Block 50, Chandeleur Sound Area, having Coordinates of X = 2,650,100.00 and Y = 410,830.00; thence South 7,375.00 feet on the East line of said Block 50 to a point having Coordinates of X = 2,650,100.00 and Y = 403,455.00; thence West 14,750.00 feet to a point on the West line of said Block 50 having Coordinates of X = 2,635,350.00 and Y = 403,455.00; thence North 7,375.00 feet on the West line of said Block 50 to its Northwest corner having Coordinates of X = 2,635,350.00 and Y = 410,830.00; thence East 14,750.00 feet on the North line of said Block 50 to the point of beginning, containing approximately 982 acres, as shown outlined in red on a plat on file in the Office of Mineral Resources, Department of Natural Resources. All bearings, distances and coordinates are based on Louisiana Coordinate System of 1927 (South Zone).

NOTE: The above tract is located in or near an oyster restricted area and all operations in such area must be conducted in strict conformity with the stipulations and/or regulations of the Louisiana Department of Wildlife and Fisheries.

NOTE: The State of Louisiana does hereby reserve, and this lease shall be subject to, the imprescriptible right of surface use in the nature of a servitude in favor of the Department of Natural Resources, including its Offices and Commissions, for the sole purpose of implementing, constructing, servicing and maintaining approved coastal zone management and/or restoration projects. Utilization of any and all rights derived under this lease by the mineral lessee, its agents, successors or assigns, shall not interfere with nor hinder the reasonable surface use by the Department of Natural Resources, its Offices or Commissions, as hereinabove reserved.

Applicant: Specter Exploration, Inc.

Bidder	Cash Payment	Price / Acre	Rental	Oil	Gas	Other



OFFICIAL COPY
OFFICE OF MINERAL RESOURCES
DEPT. OF NATURAL RESOURCES
DO NOT REMOVE

TRACT 32670 - PORTION OF BLOCK 50, CHANDELEUR SOUND AREA, St. Bernard Parish, Louisiana

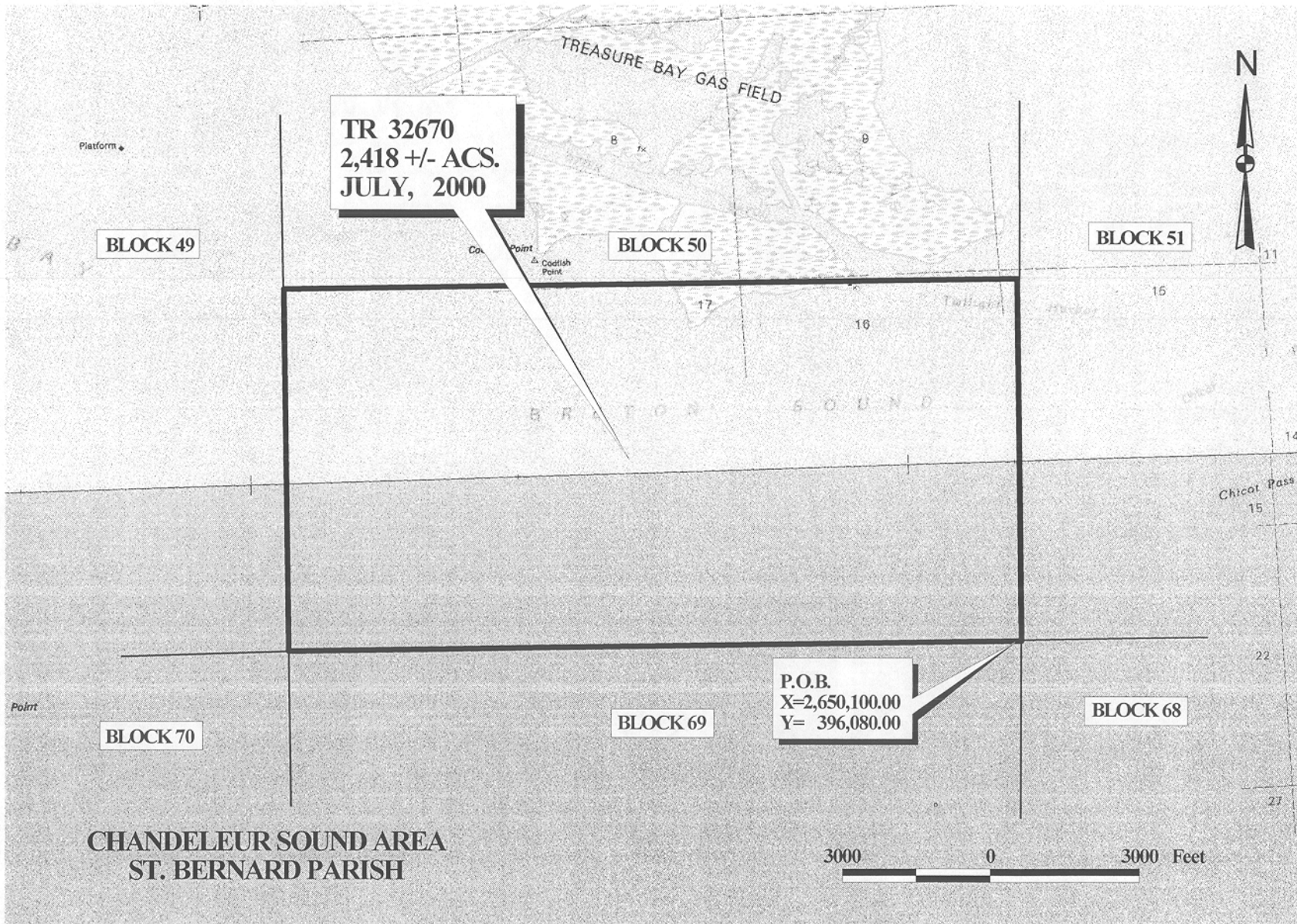
All of the lands now or formerly constituting the beds and bottoms of all water bodies of every nature and description and all islands and other lands formed by accretion or reliction, except tax lands, belonging to the State of Louisiana and not under mineral lease on July 12, 2000, situated in St. Bernard Parish, Louisiana, and more particularly described as follows: Beginning at the Southeast corner of Block 50, Chandeleur Sound Area, having Coordinates of X = 2,650,100.00 and Y = 396,080.00; thence West 14,750.00 feet along the South line of said Block 50 to its Southwest corner having Coordinates of X = 2,635,350.00 and Y = 396,080.00; thence North 7,375.00 feet along the West line of said Block 50 to a point having Coordinates of X = 2,635,350.00 and Y = 403,455.00; thence East 14,750.00 feet to a point on the East line of said Block 50 having Coordinates of X = 2,650,100.00 and Y = 403,455.00; thence South 7,375.00 feet along the East line of said Block 50 to the point of beginning, containing approximately 2,418 acres, as shown outlined in red on a plat on file in the Office of Mineral Resources, Department of Natural Resources. All bearings, distances and coordinates are based on Louisiana Coordinate System of 1927 (South Zone).

NOTE: The above tract is located in or near an oyster restricted area and all operations in such area must be conducted in strict conformity with the stipulations and/or regulations of the Louisiana Department of Wildlife and Fisheries.

NOTE: The State of Louisiana does hereby reserve, and this lease shall be subject to, the imprescriptible right of surface use in the nature of a servitude in favor of the Department of Natural Resources, including its Offices and Commissions, for the sole purpose of implementing, constructing, servicing and maintaining approved coastal zone management and/or restoration projects. Utilization of any and all rights derived under this lease by the mineral lessee, its agents, successors or assigns, shall not interfere with nor hinder the reasonable surface use by the Department of Natural Resources, its Offices or Commissions, as hereinabove reserved.

Applicant: Specter Exploration, Inc.

Bidder	Cash Payment	Price / Acre	Rental	Oil	Gas	Other



OFFICIAL COPY
 OFFICE OF MINERAL RESOURCES
 DEPT. OF NATURAL RESOURCES
 DO NOT REMOVE

TRACT 32671 - PORTION OF BLOCK 69, CHANDELEUR SOUND AREA, St. Bernard Parish, Louisiana

All of the lands now or formerly constituting the beds and bottoms of all water bodies of every nature and description and all islands and other lands formed by accretion or reliction, except tax lands, belonging to the State of Louisiana and not under mineral lease on July 12, 2000, situated in St. Bernard Parish, Louisiana, and more particularly described as follows: Beginning at a point on the North line of Block 69, Chandeleur Sound Area, being the Northeast corner of State Lease No. 16165, having Coordinates of X = 2,638,950.00 and Y = 396,080.00; thence East 11,150.00 feet on the North line of said Block 69 to its Northeast corner having Coordinates of X = 2,650,100.00 and Y = 396,080.00; thence South 7,375.00 feet along the East line of said Block 69 to a point having Coordinates of X = 2,650,100.00 and Y = 388,705.00; thence West 11,150.00 feet to the Southeast corner of said State Lease No. 16165 having Coordinates of X = 2,638,950.00 and Y = 388,705.00; thence North 7,375.00 feet along the East line of said State Lease No. 16165 to the point of beginning, containing approximately 1,887.77 acres, as shown outlined in red on a plat on file in the Office of Mineral Resources, Department of Natural Resources. All bearings, distances and coordinates are based on Louisiana Coordinate System of 1927 (South Zone).

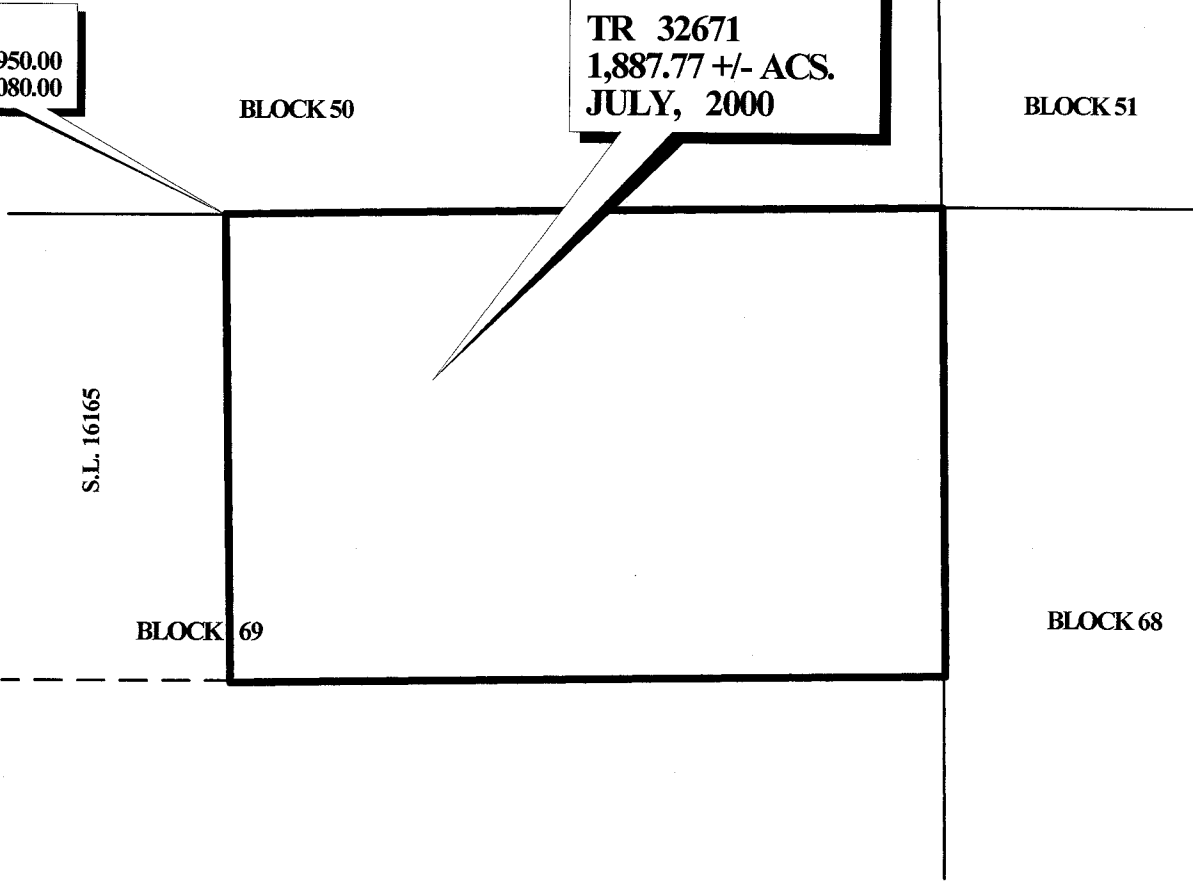
NOTE: The State of Louisiana does hereby reserve, and this lease shall be subject to, the imprescriptible right of surface use in the nature of a servitude in favor of the Department of Natural Resources, including its Offices and Commissions, for the sole purpose of implementing, constructing, servicing and maintaining approved coastal zone management and/or restoration projects. Utilization of any and all rights derived under this lease by the mineral lessee, its agents, successors or assigns, shall not interfere with nor hinder the reasonable surface use by the Department of Natural Resources, its Offices or Commissions, as hereinabove reserved.

Applicant: Specter Exploration, Inc.

Bidder	Cash Payment	Price / Acre	Rental	Oil	Gas	Other

P.O.B.
X=2,638,950.00
Y= 396,080.00

TR 32671
1,887.77 +/- ACS.
JULY, 2000



**CHANDELEUR SOUND AREA
ST. BERNARD PARISH**

OFFICIAL COPY
OFFICE OF MINERAL RESOURCES
DEPT. OF NATURAL RESOURCES
DO NOT REMOVE

