

NOT TO BE USED WITH A PORTION...  
FOR INFORMATIONAL PURPOSES ONLY

MAIN PASS AREA, REV.

BRETON SOUND AREA

BRETON SD. BLK. 33

TR 32661

TR 32662

SL 16298

SL 4458

SL 14217

34

SL 14216

SL 14560

TR 32663

P.O.B.  
X=2,635,350.00  
Y= 307,580.00

P.O.B.  
X=2,650,100.00  
Y= 307,580.00

TR 32664

TR 32665

TR 32666

SL 16569

26

35

31

48

47

46

(DIAMOND SHARROCK)  
SL 12002

MAIN PASS BLK 31 FIELD

DIAMOND SHARROCK  
SL 12504

F & A Map Services  
Division of PI

MAP NOT TO SCALE

PLAQUEMINES PARISH

136

TRACT 32661 - PORTION OF BLOCK 33, BRETON SOUND AREA, Plaquemines Parish,  
Louisiana

All of the lands now or formerly constituting the beds and bottoms of all water bodies of every nature and description and all islands and other lands formed by accretion or reliction, except tax lands, belonging to the State of Louisiana and not under mineral lease on July 12, 2000, situated in Plaquemines Parish, Louisiana, and more particularly described as follows: Beginning at the Southwest corner of Block 33, Breton Sound Area, having Coordinates of X = 2,635,350.00 and Y = 307,580.00; thence North 14,750.00 feet along the West line of said Block 33 to its Northwest corner having Coordinates of X = 2,635,350.00 and Y = 322,330.00; thence East 7,375.00 feet along the North line of said Block 33 to a point having Coordinates of X = 2,642,725.00 and Y = 322,330.00; thence South 14,750.00 feet to a point on the South line of said Block 33 having Coordinates of X = 2,642,725.00 and Y = 307,580.00; thence West 7,375.00 feet along the South line of said Block 33 to the point of beginning, containing approximately 2,497.27 acres, as shown outlined in red on a plat on file in the Office of Mineral Resources, Department of Natural Resources. All bearings, distances and coordinates are based on Louisiana Coordinate System of 1927 (South Zone).

NOTE: The State of Louisiana does hereby reserve, and this lease shall be subject to, the imprescriptible right of surface use in the nature of a servitude in favor of the Department of Natural Resources, including its Offices and Commissions, for the sole purpose of implementing, constructing, servicing and maintaining approved coastal zone management and/or restoration projects. Utilization of any and all rights derived under this lease by the mineral lessee, its agents, successors or assigns, shall not interfere with nor hinder the reasonable surface use by the Department of Natural Resources, its Offices or Commissions, as hereinabove reserved.

Applicant: Stephen M. Jenkins & Associates, Inc.

Bidder	Cash Payment	Price / Acre	Rental	Oil	Gas	Other

BLK. 32



TR 32661  
2,497.27 +/- ACS.  
JULY 2000

BLK. 26

MAIN PASS AREA, REV.  
BRETON SOUND AREA

BLK. 33

S.L. 16298

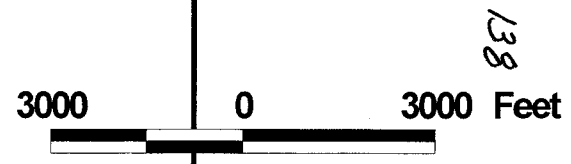
BLK. 34

P.O.B.  
X= 2,635,350.00  
Y= 307,580.00

BLK. 48

OFFICIAL COPY  
OFFICE OF MINERAL RESOURCES  
DEPT. OF NATURAL RESOURCES  
DO NOT REMOVE

PLAQUEMINES PARISH



**TRACT 32662 - PORTION OF BLOCK 33, BRETON SOUND AREA, Plaquemines Parish, Louisiana**

All of the lands now or formerly constituting the beds and bottoms of all water bodies of every nature and description and all islands and other lands formed by accretion or reliction, except tax lands, belonging to the State of Louisiana and not under mineral lease on July 12, 2000, situated in Plaquemines Parish, Louisiana, and more particularly described as follows: Beginning at the Southeast corner of Block 33, Breton Sound Area, having Coordinates of X = 2,650,100.00 and Y = 307,580.00; thence North 5,200.00 feet along the East line of said Block 33 to the Southeast corner of State Lease No. 16298 having Coordinates of X = 2,650,100.00 and Y = 312,780.00; thence along the boundaries of said State Lease No. 16298 the following courses: West 2,650.00 feet, North 6,550.00 feet and East 2,650.00 feet to a point on the East line of said Block 33 having Coordinates of X = 2,650,100.00 and Y = 319,330.00; thence North 3,000.00 feet along the East line of said Block 33 to its Northeast corner having Coordinates of X = 2,650,100.00 and Y = 322,330.00; thence West 7,375.00 feet along the North line of said Block 33 to a point having Coordinates of X = 2,642,725.00 and Y = 322,330.00; thence South 14,750.00 feet to a point on the South line of said Block 33 having Coordinates of X = 2,642,725.00 and Y = 307,580.00; thence East 7,375.00 feet along the South line of said Block 33 to the point of beginning, containing approximately 2,098.80 acres, as shown outlined in red on a plat on file in the Office of Mineral Resources, Department of Natural Resources. All bearings, distances and coordinates are based on Louisiana Coordinate System of 1927 (South Zone).

NOTE: The State of Louisiana does hereby reserve, and this lease shall be subject to, the imprescriptible right of surface use in the nature of a servitude in favor of the Department of Natural Resources, including its Offices and Commissions, for the sole purpose of implementing, constructing, servicing and maintaining approved coastal zone management and/or restoration projects. Utilization of any and all rights derived under this lease by the mineral lessee, its agents, successors or assigns, shall not interfere with nor hinder the reasonable surface use by the Department of Natural Resources, its Offices or Commissions, as hereinabove reserved.

Applicant: Stephen M. Jenkins & Associates, Inc.

Bidder	Cash Payment	Price / Acre	Rental	Oil	Gas	Other

BLK. 32



TR 32662  
2,098.80 +/- ACS.  
JULY 2000

MAIN PASS AREA, REV.  
BRETON SOUND AREA

BLK. 26

BLK. 33

S.L. 16298

BLK. 34

P.O.B.  
X= 2,650,100.00  
Y= 307,580.00

BLK. 48

OFFICIAL COPY  
OFFICE OF MINERAL RESOURCES  
DEPT. OF NATURAL RESOURCES  
DO NOT REMOVE

PLAQUEMINES PARISH

3000 0 3000 Feet



140

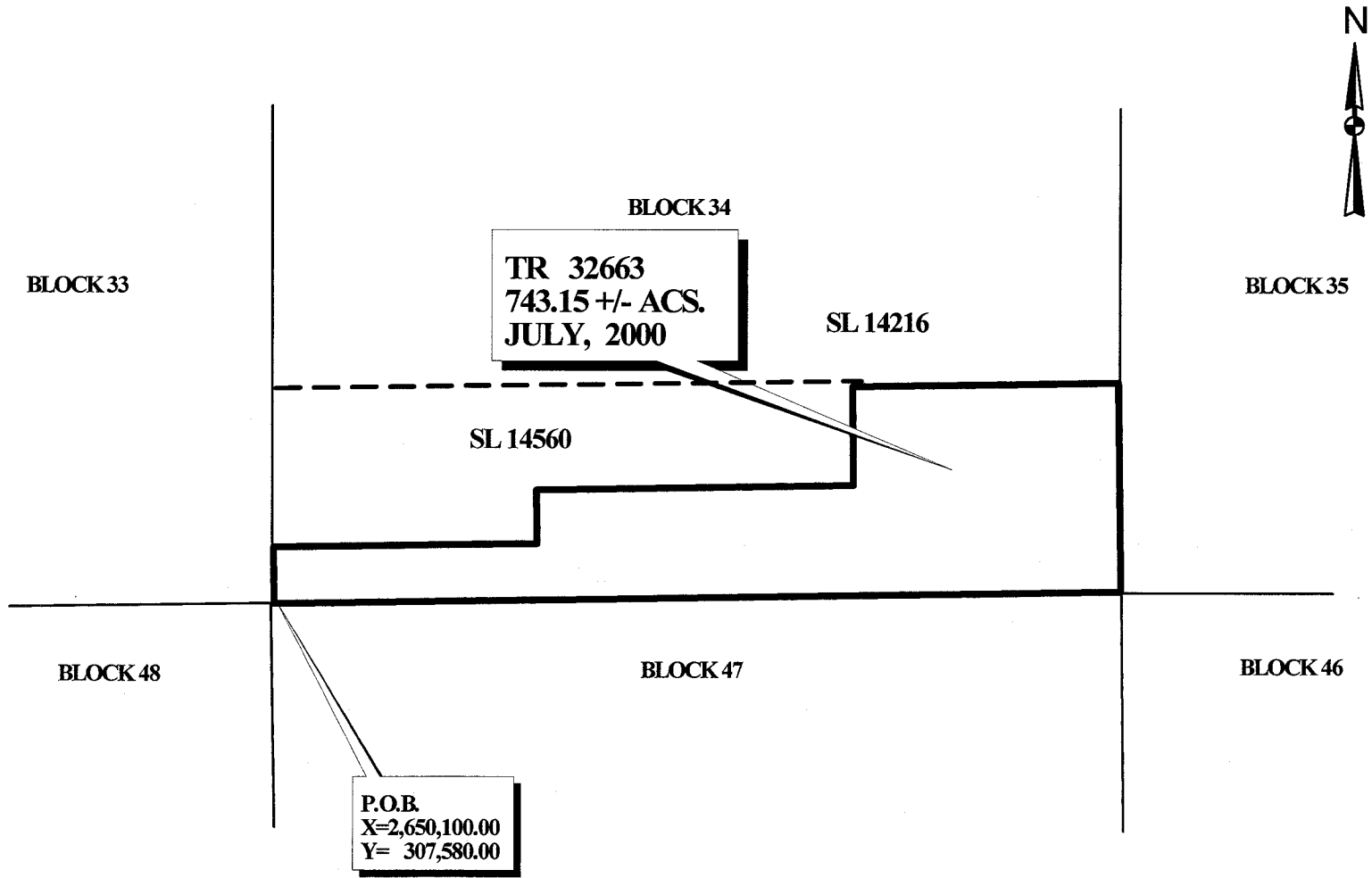
**TRACT 32663 - PORTION OF BLOCK 34, BRETON SOUND AREA, Plaquemines Parish, Louisiana**

All of the lands now or formerly constituting the beds and bottoms of all water bodies of every nature and description and all islands and other lands formed by accretion or reliction, except tax lands, belonging to the State of Louisiana and not under mineral lease on July 12, 2000, situated in Plaquemines Parish, Louisiana, and more particularly described as follows: Beginning at the Southwest corner of Block 34, Breton Sound Area, having Coordinates of X = 2,650,100.00 and Y = 307,580.00; thence North 995.79 feet along the West line of said Block 34 to the Southwest corner of State Lease No. 14560, as amended, having Coordinates of X = 2,650,100.00 and Y = 308,575.79; thence along the boundaries of said State Lease No. 14560 the following courses: East 4,590.00 feet, North 948.36 feet, East 5,543.55 feet and North 1,743.35 feet to the Northeast corner of said State Lease No. 14560, also being a point on the South line of State Lease No. 14216, having Coordinates of X = 2,660,233.55 and Y = 311,267.50; thence East 4,616.45 feet along the South line of said State Lease No. 14216 to a point on the East line of said Block 34 having Coordinates of X = 2,664,850.00 and Y = 311,267.50; thence South 3,687.50 feet along the East line of said Block 34 to its Southeast corner having Coordinates of X = 2,664,850.00 and Y = 307,580.00; thence West 14,750.00 feet along the South line of said Block 34 to the point of beginning, containing approximately **743.15 acres**, as shown outlined in red on a plat on file in the Office of Mineral Resources, Department of Natural Resources. All bearings, distances and coordinates are based on Louisiana Coordinate System of 1927 (South Zone).

NOTE: The State of Louisiana does hereby reserve, and this lease shall be subject to, the imprescriptible right of surface use in the nature of a servitude in favor of the Department of Natural Resources, including its Offices and Commissions, for the sole purpose of implementing, constructing, servicing and maintaining approved coastal zone management and/or restoration projects. Utilization of any and all rights derived under this lease by the mineral lessee, its agents, successors or assigns, shall not interfere with nor hinder the reasonable surface use by the Department of Natural Resources, its Offices or Commissions, as hereinabove reserved.

Applicant: Stephen M. Jenkins & Associates, Inc.

Bidder	Cash Payment	Price / Acre	Rental	Oil	Gas	Other



**BRETON SOUND AREA  
PLAQUEMINES PARISH**

OFFICIAL COPY  
OFFICE OF MINERAL RESOURCES  
DEPT. OF NATURAL RESOURCES  
DO NOT REMOVE

142