

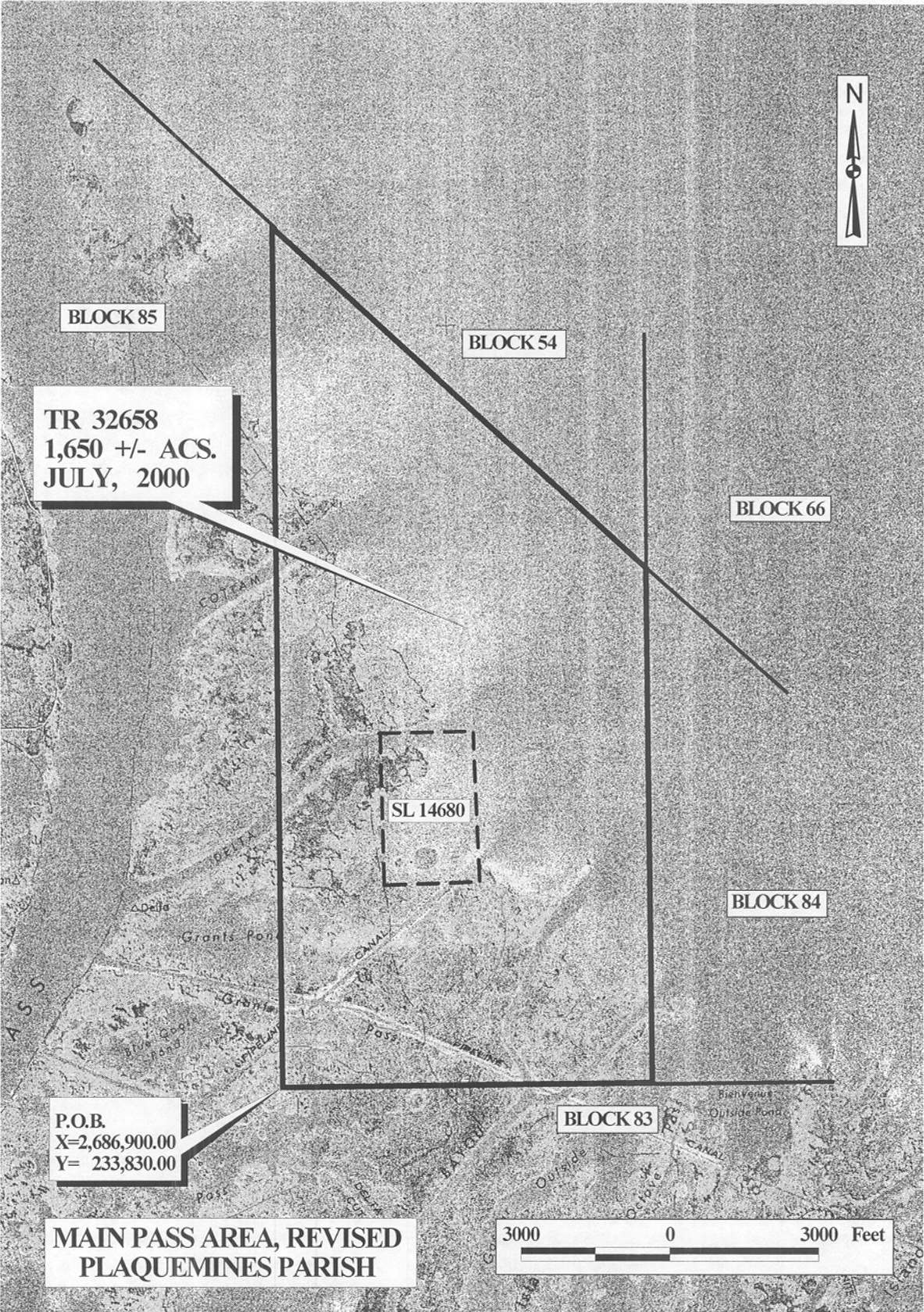
TRACT 32658 - PORTION OF BLOCK 84, MAIN PASS AREA, REVISED, Plaquemines Parish, Louisiana

All of the lands now or formerly constituting the beds and bottoms of all water bodies of every nature and description and all islands and other lands formed by accretion or reliction, except tax lands, belonging to the State of Louisiana and not under mineral lease on July 12, 2000, situated in Plaquemines Parish, Louisiana, and more particularly described as follows: Beginning at a point having Coordinates of X = 2,686,900.00 and Y = 233,830.00, said point also being the Southwest corner of Block 84, Main Pass Area, Revised; thence North approximately 17,099 feet along the West line of said Block 84 to a point having a Coordinate of X = 2,686,900.00, said point also being the Northwest corner of said Block 84; thence Southeasterly approximately 10,130 feet along the North line of said Block 84 to a point having a Coordinate of X = 2,694,350.00; thence South approximately 10,233 feet to a point having Coordinates of X = 2,694,350.00 and Y = 233,830.00, said point also being on the South line of said Block 84; thence West 7,450.00 feet along the South line of said Block 84 to the point of beginning, **LESS AND EXCEPT** State Lease No. 14680 that lies entirely within the above described tract, containing approximately **1,650 acres**, as shown outlined in red on a plat on file in the Office of Mineral Resources, Department of Natural Resources. All bearings, distances and coordinates are based on Louisiana Coordinate System of 1927 (South Zone).

NOTE: The State of Louisiana does hereby reserve, and this lease shall be subject to, the imprescriptible right of surface use in the nature of a servitude in favor of the Department of Natural Resources, including its Offices and Commissions, for the sole purpose of implementing, constructing, servicing and maintaining approved coastal zone management and/or restoration projects. Utilization of any and all rights derived under this lease by the mineral lessee, its agents, successors or assigns, shall not interfere with nor hinder the reasonable surface use by the Department of Natural Resources, its Offices or Commissions, as hereinabove reserved.

Applicant: Robert A. Schroeder, Inc.

Bidder	Cash Payment	Price / Acre	Rental	Oil	Gas	Other

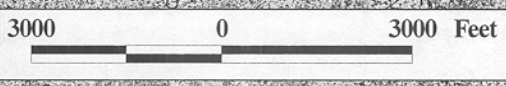


TR 32658
1,650 +/- ACS.
JULY, 2000

SL 14680

P.O.B.
X=2,686,900.00
Y= 233,830.00

MAIN PASS AREA, REVISED
PLAQUEMINES PARISH



OFFICIAL COPY
OFFICE OF MINERAL RESOURCES
DEPT. OF NATURAL RESOURCES
DO NOT REMOVE

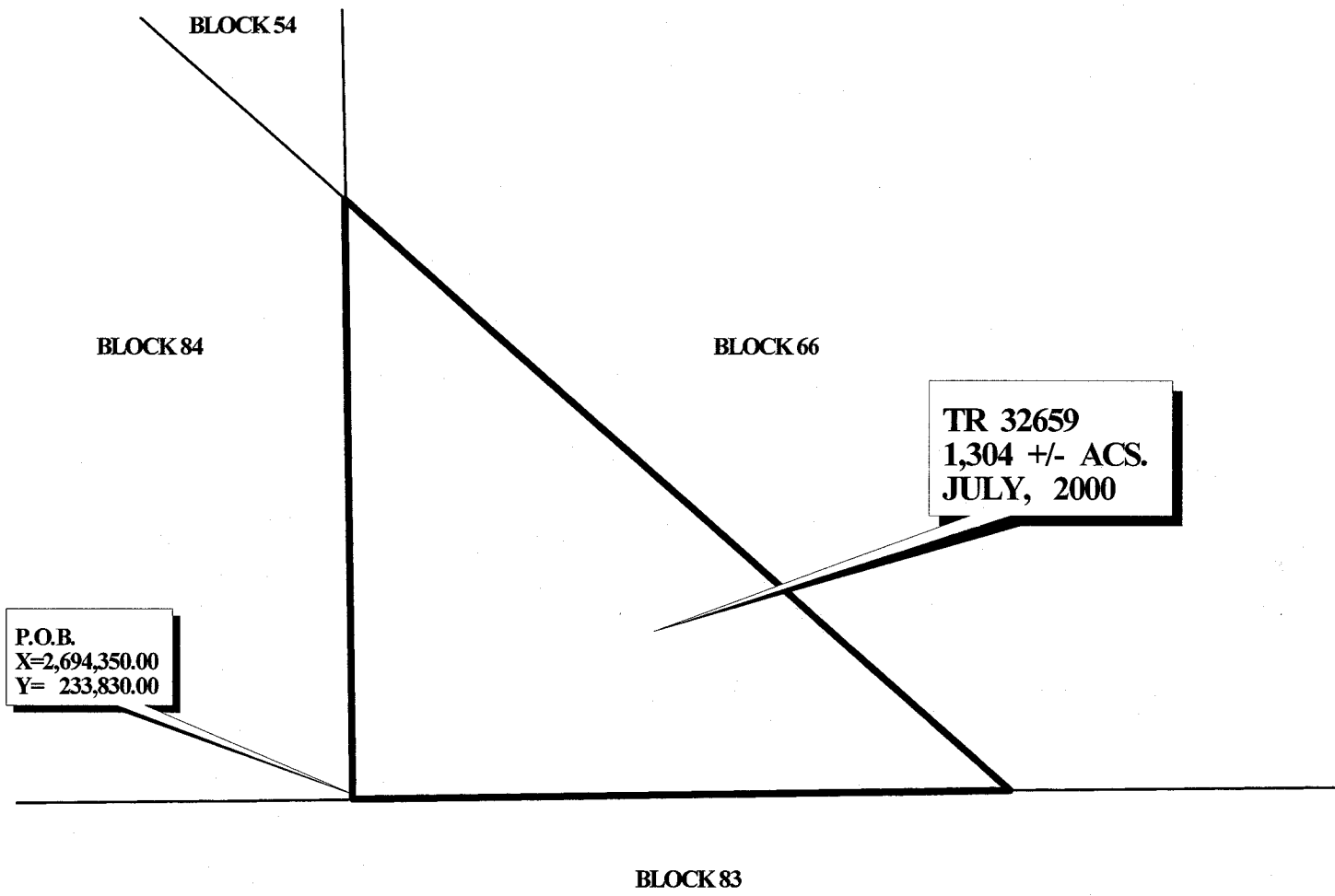
TRACT 32659 - PORTION OF BLOCK 84, MAIN PASS AREA, REVISED, Plaquemines Parish, Louisiana

All of the lands now or formerly constituting the beds and bottoms of all water bodies of every nature and description and all islands and other lands formed by accretion or reliction, except tax lands, belonging to the State of Louisiana and not under mineral lease on July 12, 2000, situated in Plaquemines Parish, Louisiana, and more particularly described as follows: Beginning at a point having Coordinates of X = 2,694,350.00 and Y = 233,830.00, said point also being on the South line of Block 84, Main Pass Area, Revised; thence North approximately 10,238 feet to a point having a Coordinate of X = 2,694,350.00, said point also being on the North line of said Block 84; thence Southwesterly along said North line of said Block 84 to a point having a Coordinate of Y = 233,830.00, said point also being on the South line of said Block 84; thence West approximately 11,103 feet along said South line of said Block 84 to the point of beginning, containing approximately 1,304 acres, as shown outlined in red on a plat on file in the Office of Mineral Resources, Department of Natural Resources. All bearings, distances and coordinates are based on Louisiana Coordinate System of 1927 (South Zone).

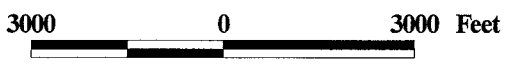
NOTE: The State of Louisiana does hereby reserve, and this lease shall be subject to, the imprescriptible right of surface use in the nature of a servitude in favor of the Department of Natural Resources, including its Offices and Commissions, for the sole purpose of implementing, constructing, servicing and maintaining approved coastal zone management and/or restoration projects. Utilization of any and all rights derived under this lease by the mineral lessee, its agents, successors or assigns, shall not interfere with nor hinder the reasonable surface use by the Department of Natural Resources, its Offices or Commissions, as hereinabove reserved.

Applicant: Robert A. Schroeder, Inc.

Bidder	Cash Payment	Price / Acre	Rental	Oil	Gas	Other

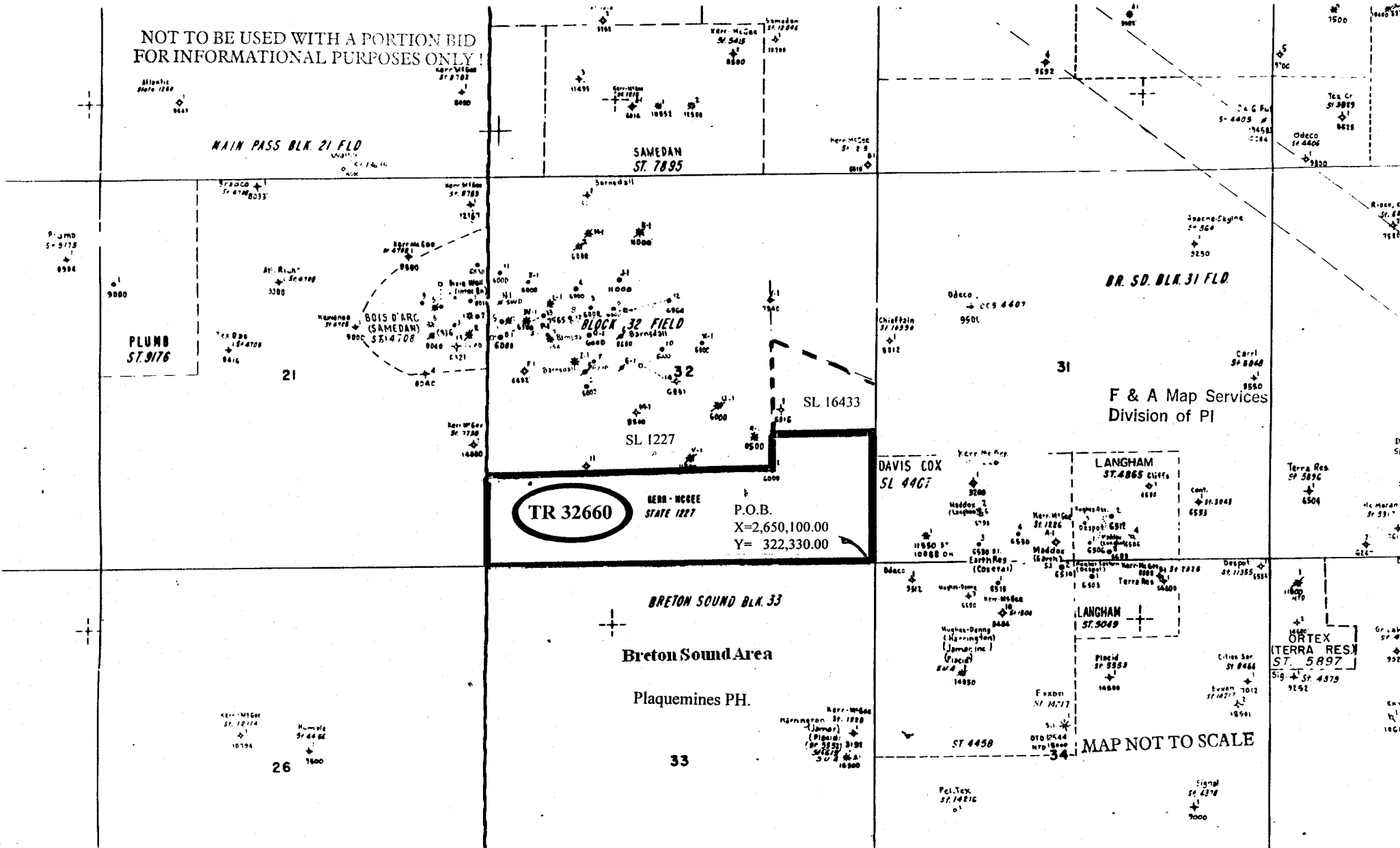


**MAIN PASS AREA, REVISED
PLAQUEMINES PARISH**



**OFFICIAL COPY
OFFICE OF MINERAL RESOURCES
DEPT. OF NATURAL RESOURCES
DO NOT REMOVE**

NOT TO BE USED WITH A PORTION BID
FOR INFORMATIONAL PURPOSES ONLY!



BR. SD. BLK. 31 FLD

TR 32660

KERR - MCGEE
STATE 1227

P.O.B.
X=2,650,100.00
Y= 322,330.00

BRETON SOUND BLK. 33

Breton Sound Area

Plaquemines PH.

DAVIS COX
SL 4407

LANGHAM
ST. 4865

LANGHAM
ST. 5049

TERRA RES.
ST. 5897

TERRA RES.
ST. 5896

MAP NOT TO SCALE

TRACT 32660 - PORTION OF BLOCK 32, BRETON SOUND AREA, Plaquemines Parish, Louisiana

All of the lands now or formerly constituting the beds and bottoms of all water bodies of every nature and description and all islands and other lands formed by accretion or reliction, except tax lands, belonging to the State of Louisiana and not under mineral lease on July 12, 2000, situated in Plaquemines Parish, Louisiana, and more particularly described as follows: Beginning at the Southeast corner of Block 32, Breton Sound Area, having Coordinates of X = 2,650,100.00 and Y = 322,330.00; thence West 14,750.00 feet along the South line of said Block 32 to its Southwest corner having Coordinates of X = 2,635,350.00 and Y = 322,330.00; thence North 3,687.50 feet along the West line of said Block 32 to the Southwest corner of State Lease No. 1227, as amended, having Coordinates of X = 2,635,350.00 and Y = 326,017.50; thence East 11,250.00 feet on the South line of said State Lease No. 1227 to its Southeast corner having Coordinates of X = 2,646,600.00 and Y = 326,017.50; thence North 1,500.00 feet along the East line of said State Lease No. 1227 to the Southwest corner of State Lease No. 16433 having Coordinates of X = 2,646,600.00 and Y = 327,517.50; thence East 3,500.00 feet along the South line of said State Lease No. 16433 to a point on the East line of said Block 32 having Coordinates of X = 2,650,100.00 and Y = 327,517.50; thence South 5,187.50 feet along the East line of said Block 32 to the point of beginning, containing approximately 1,369.16 acres, as shown outlined in red on a plat on file in the Office of Mineral Resources, Department of Natural Resources. All bearings, distances and coordinates are based on Louisiana Coordinate System of 1927 (South Zone).

NOTE: The State of Louisiana does hereby reserve, and this lease shall be subject to, the imprescriptible right of surface use in the nature of a servitude in favor of the Department of Natural Resources, including its Offices and Commissions, for the sole purpose of implementing, constructing, servicing and maintaining approved coastal zone management and/or restoration projects. Utilization of any and all rights derived under this lease by the mineral lessee, its agents, successors or assigns, shall not interfere with nor hinder the reasonable surface use by the Department of Natural Resources, its Offices or Commissions, as hereinabove reserved.

Applicant: Stephen M. Jenkins & Associates, Inc.

Bidder	Cash Payment	Price / Acre	Rental	Oil	Gas	Other

MAIN PASS AREA, REV.
BRETON SOUND AREA

S.L. 1227

S.L. 16433

BLK. 32

BLK. 31

TR 32660
1,369.16 +/- ACS.
JULY, 2000

P.O.B.
X= 2,650,100.00
Y= 322,330.00

PLAQUEMINES PARISH

BLK. 33

OFFICIAL COPY
OFFICE OF MINERAL RESOURCES
DEPT. OF NATURAL RESOURCES
DO NOT REMOVE



1/31/5