

NOT TO BE USED WITH A PORTION OF THE MAP FOR INFORMATIONAL PURPOSES ONLY

TR 32656

54

P.O.B.
X=2,694,350.00
Y= 263,330.00

COURT DEBEE LINE - JUNE 15, 1975

MAIN PASS BLK. 50

QUINTANA ST. 11189

TR 32657

P.O.B.
X=2,694,350.00
Y= 255,955.00

Walter OGG
023 4305
ARCO 0286
PCS 4906
9456

T 19 S
T 20 S
R 19 E
R 20 E

F & A Map Services
Division of PI

MAIN PASS AREA, REVISED
PLAQUEMINES PARISH

DATA 1987
S.L. 14680
S. 9
E. 9

TR 32658

TR 32659

P.O.B.
X=2,686,900.00
Y= 233,830.00

P.O.B.
X=2,694,350.00
Y= 233,830.00

MAP NOT TO SCALE
CALCO ST. 3851

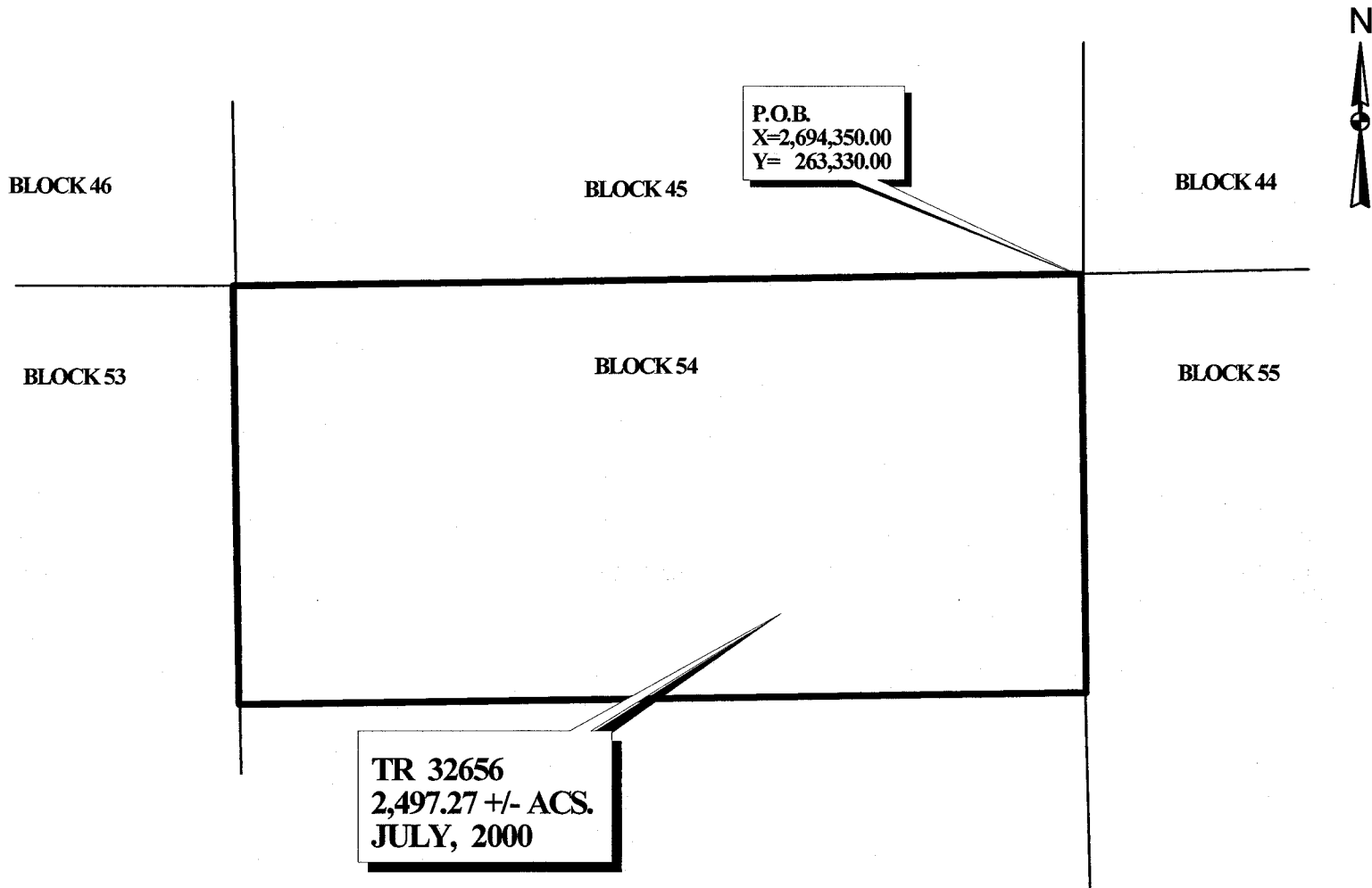
TRACT 32656 - PORTION OF BLOCK 54, MAIN PASS AREA, REVISED, Plaquemines Parish, Louisiana

All of the lands now or formerly constituting the beds and bottoms of all water bodies of every nature and description and all islands and other lands formed by accretion or reliction, except tax lands, belonging to the State of Louisiana and not under mineral lease on July 12, 2000, situated in Plaquemines Parish, Louisiana, and more particularly described as follows: Beginning at a point having Coordinates of X = 2,694,350.00 and Y = 263,330.00, said point also being the Northeast corner of Block 54, Main Pass Area, Revised; thence South 7,375.00 feet along the East line of said Block 54 to a point having Coordinates of X = 2,694,350.00 and Y = 255,955.00; thence West 14,750.00 feet to a point having Coordinates of X = 2,679,600.00 and Y = 255,955.00, which lies on the West line of said Block 54; thence North 7,375.00 feet along the West line of said Block 54 to a point having Coordinates of X = 2,679,600.00 and Y = 263,330.00, said point also being the Northwest corner of said Block 54; thence East 14,750.00 feet along said North line of said Block 54 to the point of beginning, containing approximately 2,497.27 acres, as shown outlined in red on a plat on file in the Office of Mineral Resources, Department of Natural Resources. All bearings, distances and coordinates are based on Louisiana Coordinate System of 1927 (South Zone).

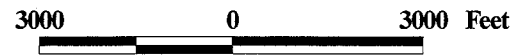
NOTE: The State of Louisiana does hereby reserve, and this lease shall be subject to, the imprescriptible right of surface use in the nature of a servitude in favor of the Department of Natural Resources, including its Offices and Commissions, for the sole purpose of implementing, constructing, servicing and maintaining approved coastal zone management and/or restoration projects. Utilization of any and all rights derived under this lease by the mineral lessee, its agents, successors or assigns, shall not interfere with nor hinder the reasonable surface use by the Department of Natural Resources, its Offices or Commissions, as hereinabove reserved.

Applicant: Robert A. Schroeder, Inc.

| Bidder | Cash Payment | Price / Acre | Rental | Oil | Gas | Other |
|--------|--------------|--------------|--------|-----|-----|-------|
| | | | | | | |
| | | | | | | |
| | | | | | | |
| | | | | | | |



**MAIN PASS AREA, REVISED
PLAQUEMINES PARISH**



OFFICIAL COPY
OFFICE OF MINERAL RESOURCES
DEPT. OF NATURAL RESOURCES
DO NOT REMOVE

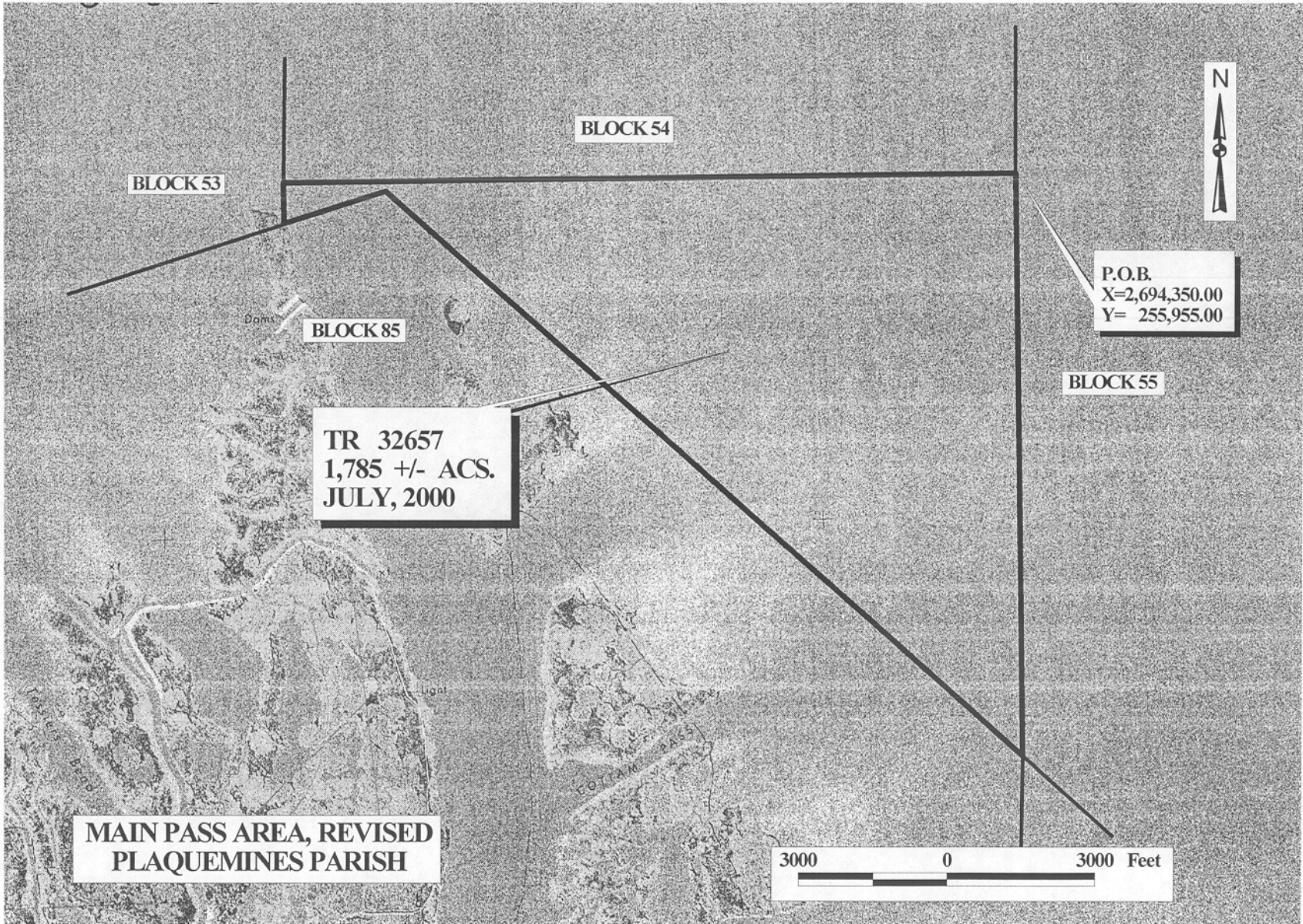
TRACT 32657 - PORTION OF BLOCK 54, MAIN PASS AREA, REVISED, Plaquemines Parish, Louisiana

All of the lands now or formerly constituting the beds and bottoms of all water bodies of every nature and description and all islands and other lands formed by accretion or reliction, except tax lands, belonging to the State of Louisiana and not under mineral lease on July 12, 2000, situated in Plaquemines Parish, Louisiana, and more particularly described as follows: Beginning at a point having Coordinates of X = 2,694,350.00 and Y = 255,955.00, said point also being on the East line of Block 54, Main Pass Area, Revised; thence South approximately 11,892 feet along the East line of said Block 54 to a point having a Coordinate of X = 2,694,350.00, said point also being the Southeast corner of said Block 54; thence along the South line of said Block 54 Northwesterly and Southwesterly to a point having a Coordinate of X = 2,679,600.00, said point also being a Southwest corner of said Block 54; thence North approximately 831 feet along the West line of said Block 54 to a point having Coordinates of X = 2,679,600.00 and Y = 255,955.00; thence East 14,750.00 feet to the point of beginning, containing approximately 1,785 acres, as shown outlined in red on a plat on file in the Office of Mineral Resources, Department of Natural Resources. All bearings, distances and coordinates are based on Louisiana Coordinate System of 1927 (South Zone).

NOTE: The State of Louisiana does hereby reserve, and this lease shall be subject to, the imprescriptible right of surface use in the nature of a servitude in favor of the Department of Natural Resources, including its Offices and Commissions, for the sole purpose of implementing, constructing, servicing and maintaining approved coastal zone management and/or restoration projects. Utilization of any and all rights derived under this lease by the mineral lessee, its agents, successors or assigns, shall not interfere with nor hinder the reasonable surface use by the Department of Natural Resources, its Offices or Commissions, as hereinabove reserved.

Applicant: Robert A. Schroeder, Inc.

| Bidder | Cash Payment | Price / Acre | Rental | Oil | Gas | Other |
|--------|--------------|--------------|--------|-----|-----|-------|
| | | | | | | |
| | | | | | | |
| | | | | | | |
| | | | | | | |



OFFICIAL COPY
OFFICE OF MINERAL RESOURCES
DEPT. OF NATURAL RESOURCES
DO NOT REMOVE