

NOT TO BE USED WITH A PORTION BID
FOR INFORMATIONAL PURPOSES ONLY

TR 32652

MAP NOT TO SCALE

TRACT 32652 - Plaquemines Parish, Louisiana

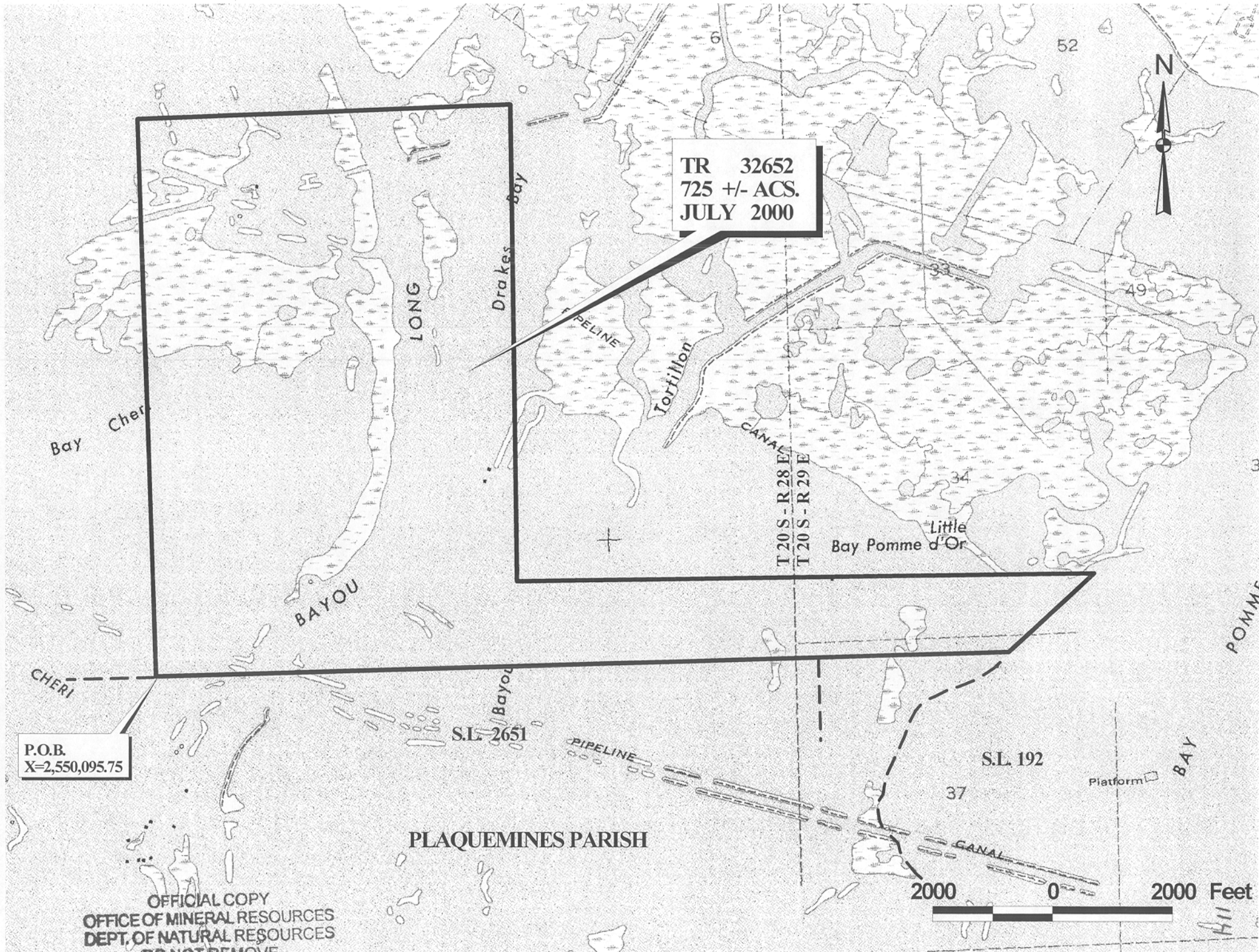
All of the lands now or formerly constituting the beds and bottoms of all water bodies of every nature and description and all islands and other lands formed by accretion or reliction, except tax lands, owned by and not under mineral lease from the State of Louisiana on July 12, 2000, situated in Plaquemines Parish, Louisiana, within the following described boundaries: Beginning at a point on the North line of State Lease No. 2651 having a Coordinate of X = 2,550,095.75; thence North 01 degrees 05 minutes 06 seconds West approximately 9,366 feet to a point having Coordinates of X = 2,549,918.39 and Y = 253,853.13; thence North 88 degrees 30 minutes 52 seconds East 6,183.69 feet to a point having Coordinates of X = 2,556,100.00 and Y = 254,013.44; thence South 8,011.96 feet to a point having Coordinates of X = 2,556,100.00 and Y = 246,001.48; thence East approximately 9,600 feet to a point on a Northwestern boundary of State Lease No. 192, as amended, having a Coordinate of Y = 246,001.48; thence Southwesterly along said boundary of said State Lease No. 192 to a point having a Coordinate of Y = 244,698.33; thence Westerly approximately 3,000 feet to the Northeast corner of said State Lease No. 2651; thence Westerly approximately 11,158 feet to the point of beginning, **LESS AND EXCEPT** any portion of State Lease No. 192, as amended, and State Lease No. 2651 that may lie within the above described tract, containing approximately 725 acres, as shown outlined in red on a plat on file in the Office of Mineral Resources, Department of Natural Resources. All bearings, distances and coordinates are based on Louisiana Coordinate System of 1927 (South Zone).

NOTE: The above tract is located in or near an oyster restricted area and all operations in such area must be conducted in strict conformity with the stipulations and/or regulations of the Louisiana Department of Wildlife and Fisheries.

NOTE: The State of Louisiana does hereby reserve, and this lease shall be subject to, the imprescriptible right of surface use in the nature of a servitude in favor of the Department of Natural Resources, including its Offices and Commissions, for the sole purpose of implementing, constructing, servicing and maintaining approved coastal zone management and/or restoration projects. Utilization of any and all rights derived under this lease by the mineral lessee, its agents, successors or assigns, shall not interfere with nor hinder the reasonable surface use by the Department of Natural Resources, its Offices or Commissions, as hereinabove reserved.

Applicant: The Louisiana Land and Exploration Company

| Bidder | Cash Payment | Price / Acre | Rental | Oil | Gas | Other |
|--------|--------------|--------------|--------|-----|-----|-------|
| | | | | | | |
| | | | | | | |
| | | | | | | |
| | | | | | | |



TR 32652
725 +/- ACS.
JULY 2000

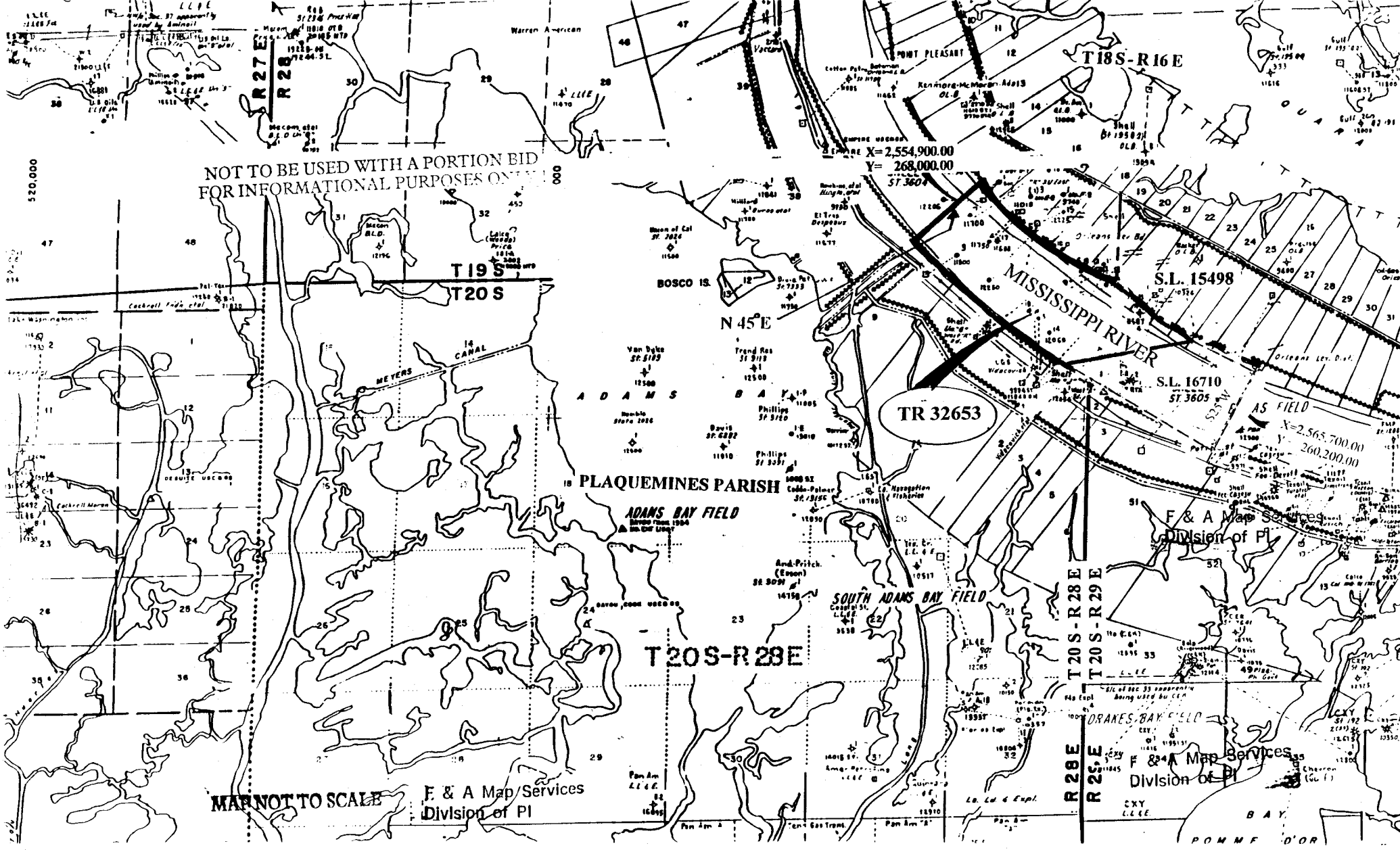
P.O.B.
X=2,550,095.75

OFFICIAL COPY
OFFICE OF MINERAL RESOURCES
DEPT. OF NATURAL RESOURCES
DO NOT REMOVE

PLAQUEMINES PARISH

2000 0 2000 Feet

NOT TO BE USED WITH A PORTION BID
FOR INFORMATIONAL PURPOSES ONLY



MAP NOT TO SCALE

F & A Map/Services
Division of PI

F & A Map Services
Division of PI

TRACT 32653 - Plaquemines Parish, Louisiana

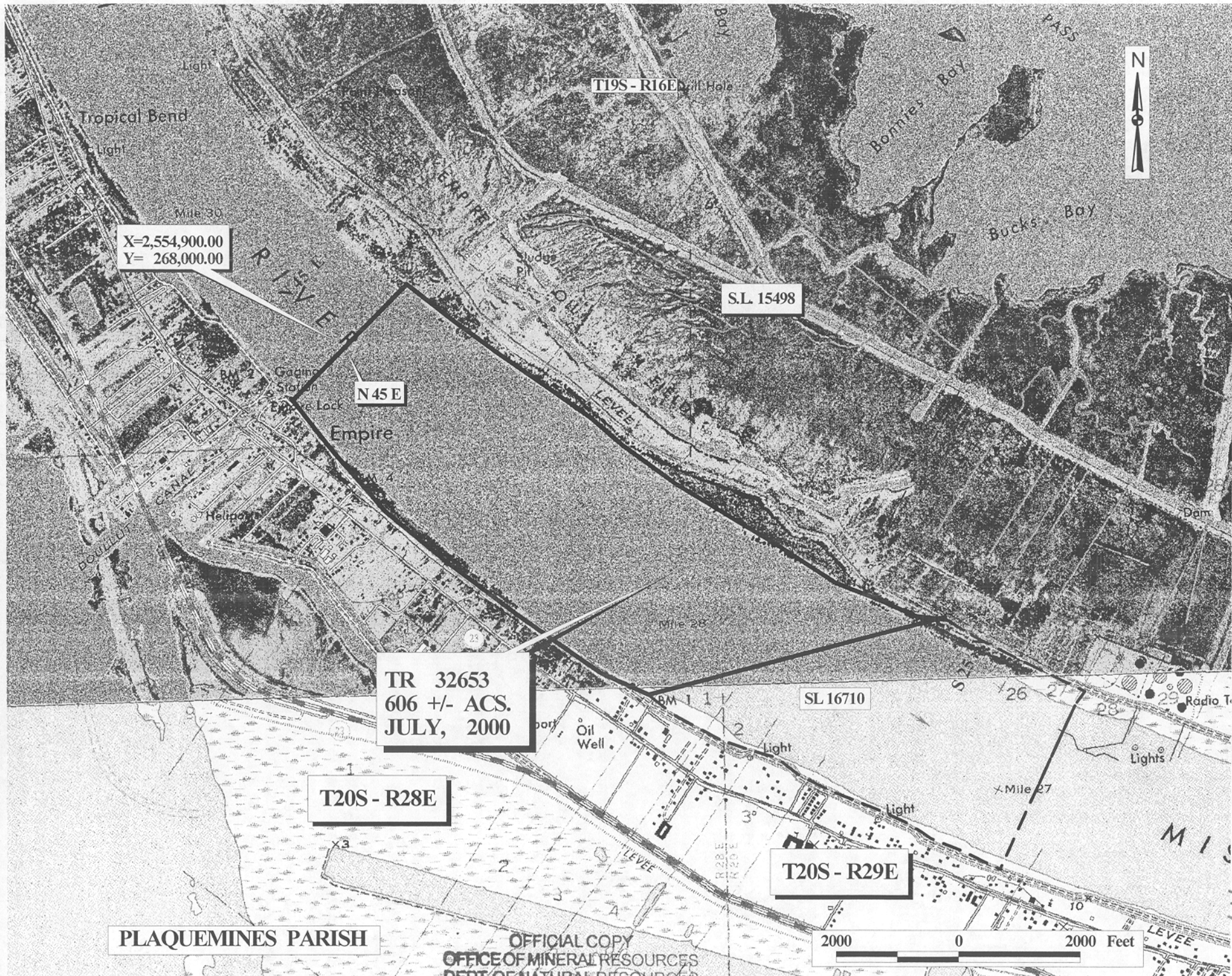
All of the lands now or formerly constituting the beds and bottoms of the Mississippi River and all islands and other lands formed by accretion or reliction, except tax lands, owned by and not under mineral lease from the State of Louisiana on July 12, 2000, situated in Plaquemines Parish, Louisiana, within the following described boundaries: That portion of the Mississippi River bounded on the North or upstream by a line having a bearing of North 45 degrees East passing through a point having Coordinates of X = 2,554,900.00 and Y = 268,000.00 and bounded on the South or downstream by the Northwestern boundary of State Lease No. 16710, **LESS AND EXCEPT** all that portion of State Lease No. 15498 that may lie within the above described tract, containing approximately **606 acres**, as shown outlined in red on a plat on file in the Office of Mineral Resources, Department of Natural Resources. All bearings, distances and coordinates are based on Louisiana Coordinate System of 1927 (South Zone).

NOTE: The above tract is located in or near an oyster restricted area and all operations in such area must be conducted in strict conformity with the stipulations and/or regulations of the Louisiana Department of Wildlife and Fisheries.

NOTE: The State of Louisiana does hereby reserve, and this lease shall be subject to, the imprescriptible right of surface use in the nature of a servitude in favor of the Department of Natural Resources, including its Offices and Commissions, for the sole purpose of implementing, constructing, servicing and maintaining approved coastal zone management and/or restoration projects. Utilization of any and all rights derived under this lease by the mineral lessee, its agents, successors or assigns, shall not interfere with nor hinder the reasonable surface use by the Department of Natural Resources, its Offices or Commissions, as hereinabove reserved.

Tract Advertised by the State Mineral Board

| Bidder | Cash Payment | Price / Acre | Rental | Oil | Gas | Other |
|--------|--------------|--------------|--------|-----|-----|-------|
| | | | | | | |
| | | | | | | |
| | | | | | | |
| | | | | | | |



X=2,554,900.00
Y= 268,000.00

T19S - R16E

S.L. 15498

N45 E

Empire

TR 32653
606 +/- ACS.
JULY, 2000

SL 16710

T20S - R28E

T20S - R29E

PLAQUEMINES PARISH

OFFICIAL COPY
OFFICE OF MINERAL RESOURCES
DEPT. OF NATURAL RESOURCES
DO NOT REMOVE

2000 0 2000 Feet