

**TRACT 32645 - Assumption Parish, Louisiana**

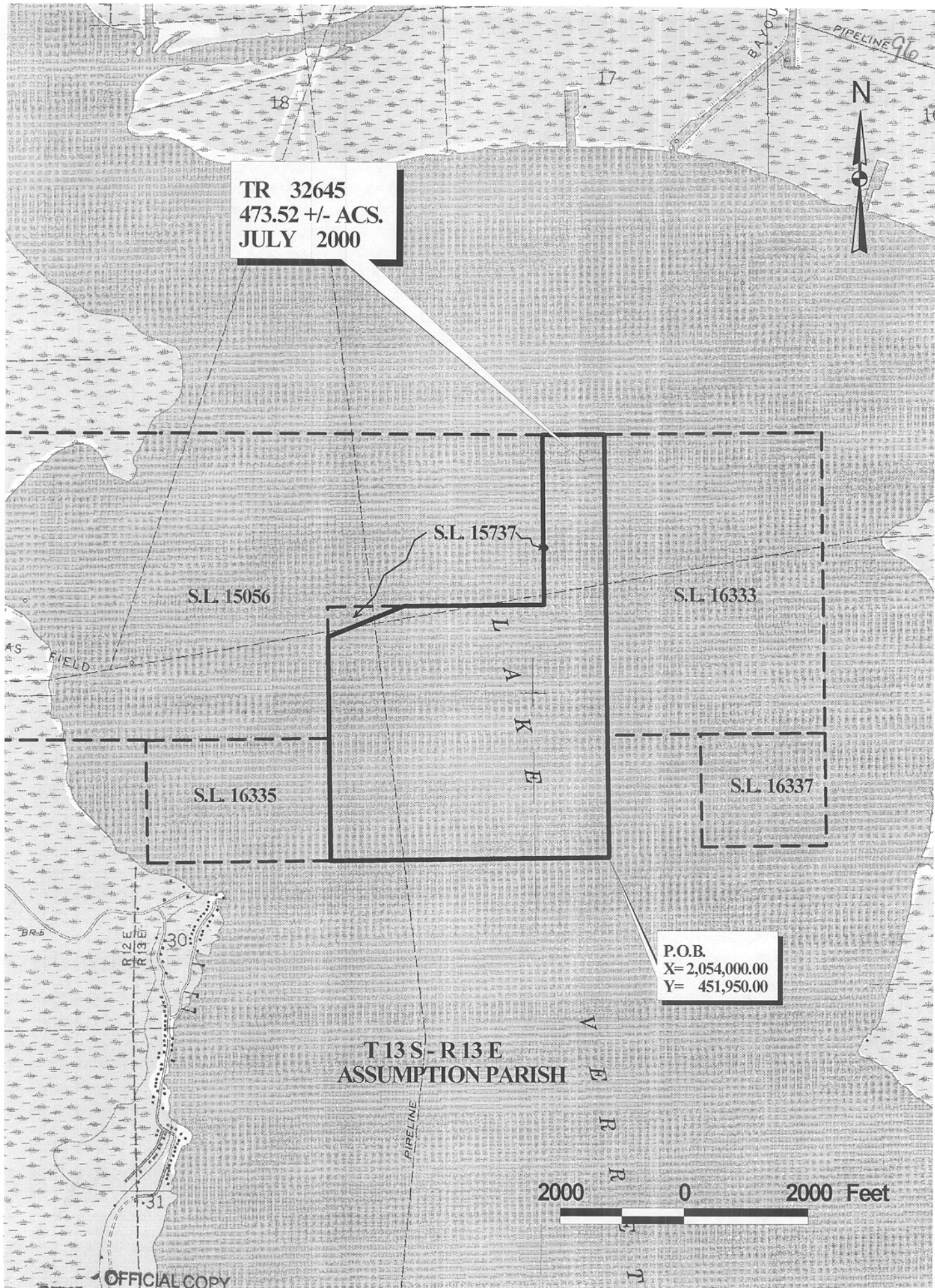
All of the lands now or formerly constituting the beds and bottoms of all water bodies of every nature and description and all islands and other lands formed by accretion or reliction, except tax lands, owned by and not under mineral lease from the State of Louisiana on July 12, 2000, situated in Assumption Parish, Louisiana, within the following described boundaries: Beginning at a point having Coordinates of X = 2,054,000.00 and Y = 451,950.00; thence West 4,500.00 feet to the Southeast corner of State Lease No. 16335 having Coordinates of X = 2,049,500.00 and Y = 451,950.00; thence North 1,950.00 feet on the East boundary of said State Lease No. 16335 to its Northeast corner, also being the Southernmost Southeast corner of State Lease No. 15056 having Coordinates of X = 2,049,500.00 and Y = 453,900.00; thence North 1,619.79 feet on an Eastern boundary of said State Lease No. 15056 to the Southwest corner of the Western portion of State Lease No. 15737, as amended, having Coordinates of X = 2,049,500.00 and Y = 455,519.79; thence North 68 degrees 45 minutes 15 seconds East 1,325.20 feet on the Southerly boundary of said Western portion of said State Lease No. 15737 to its most Easterly corner, also being a point on the boundary of said State Lease No. 15056 having Coordinates of X = 2,050,735.13 and Y = 456,000.00; thence East 2,264.87 feet on a Southern boundary of said State Lease No. 15056 to an interior corner having Coordinates of X = 2,053,000.00 and Y = 456,000.00; thence North 880.57 feet on the East boundary of said State Lease No. 15056 to the most Southerly corner of the Eastern portion of said State Lease No. 15737 having Coordinates of X = 2,053,000.00 and Y = 456,880.57; thence North 68 degrees 45 minutes 15 seconds East 53.64 feet on the boundary of said State Lease No. 15737 to its most Eastern corner having Coordinates of X = 2,053,049.99 and Y = 456,900.01; thence North 39 degrees 48 minutes 20 seconds West 78.10 feet on the boundary of said Eastern portion of said State Lease No. 15737 to its most Northern corner having Coordinates of X = 2,053,000.00 and Y = 456,960.00, being a point on the East boundary of said State Lease No. 15056; thence North 1,740.00 feet on the East boundary of said State Lease No. 15056 to its Northeast corner having Coordinates of X = 2,053,000.00 and Y = 458,700.00; thence East 1,000.00 feet to the Northwest corner of State Lease No. 16333 having Coordinates of X = 2,054,000.00 and Y = 458,700.00; thence South 4,800.00 feet on the West boundary of said State Lease No. 16333 to its Southwest corner having Coordinates of X = 2,054,000.00 and Y = 453,900.00; thence South 1,950.00 feet to the point of beginning, containing approximately 473.52 acres, as shown outlined in red on a plat on file in the Office of Mineral Resources, Department of Natural Resources. All bearings, distances and coordinates are based on Louisiana Coordinate System of 1927 (South Zone).

NOTE: The State of Louisiana does hereby reserve, and this lease shall be subject to, the imprescriptible right of surface use in the nature of a servitude in favor of the Department of Natural Resources, including its Offices and Commissions, for the sole purpose of implementing, constructing, servicing and maintaining approved coastal zone management and/or restoration projects. Utilization of any and all rights derived under this lease by the mineral lessee, its agents, successors or assigns, shall not interfere with nor hinder the reasonable surface use by the Department of Natural Resources, its Offices or Commissions, as hereinabove reserved.

Applicant: Merlin Exploration, Inc.

Bidder	Cash Payment	Price / Acre	Rental	Oil	Gas	Other

TR 32645  
473.52 +/- ACS.  
JULY 2000



T 13 S - R 13 E  
ASSUMPTION PARISH

P.O.B.  
X=2,054,000.00  
Y=451,950.00

2000 0 2000 Feet

OFFICIAL COPY  
OFFICE OF MINERAL RESOURCES  
DEPT. OF NATURAL RESOURCES  
DO NOT REMOVE

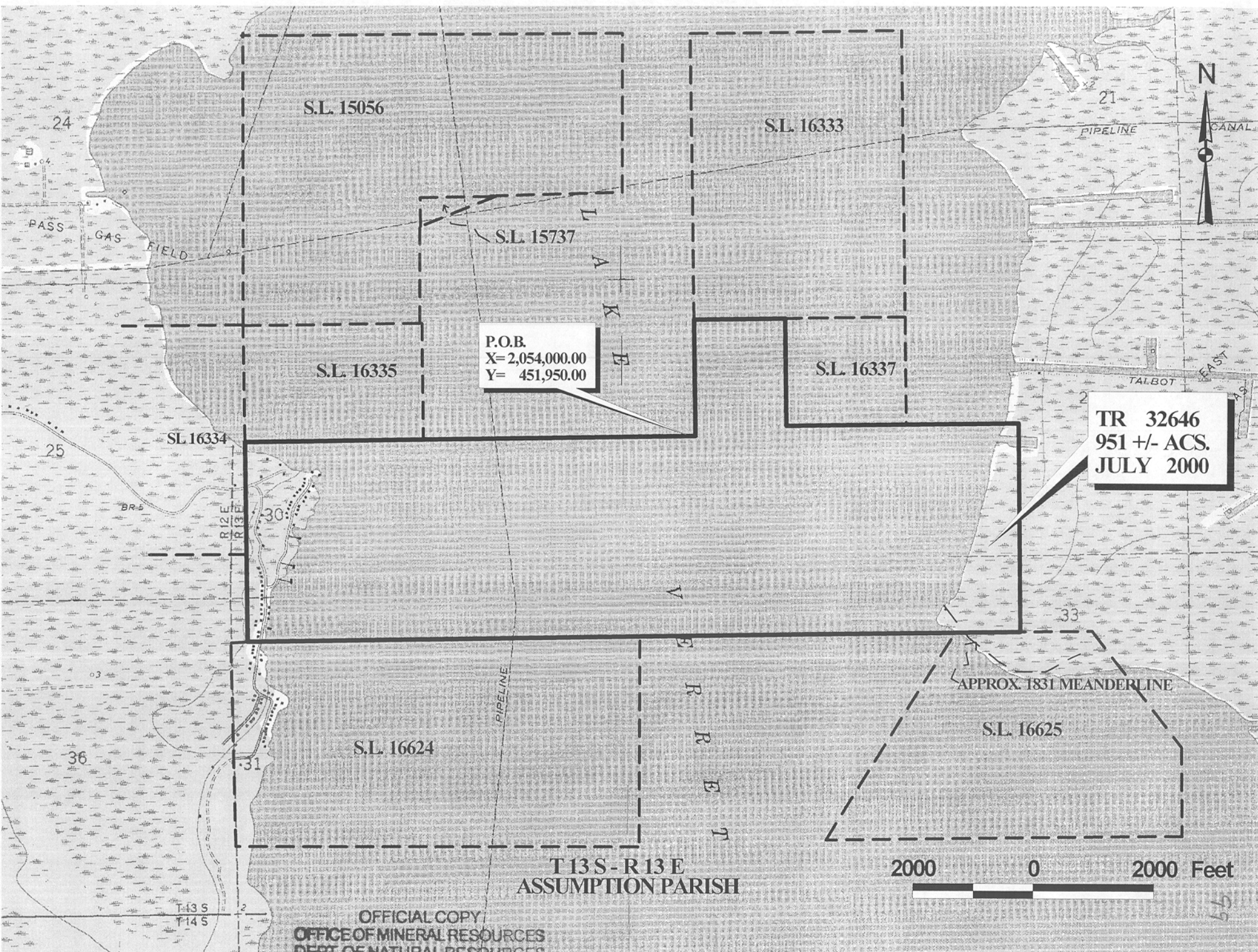
**TRACT 32646 - Assumption Parish, Louisiana**

All of the lands now or formerly constituting the beds and bottoms of all water bodies of every nature and description and all islands and other lands formed by accretion or reliction, except tax lands, owned by and not under mineral lease from the State of Louisiana on July 12, 2000, situated in Assumption Parish, Louisiana, within the following described boundaries: Beginning at a point having Coordinates of X = 2,054,000.00 and Y = 451,950.00; thence North 1,950.00 feet to the Southwest corner of State Lease No. 16333 having Coordinates of X = 2,054,000.00 and Y = 453,900.00; thence East 1,500.00 feet on the South boundary of said State Lease No. 16333 to the Northwest corner of State Lease No. 16337 having Coordinates of X = 2,055,500.00 and Y = 453,900.00; thence South 1,800.00 feet on the West boundary of said State Lease No. 16337 to its Southwest corner having Coordinates of X = 2,055,500.00 and Y = 452,100.00; thence East 2,000.00 feet on the South boundary of said State Lease No. 16337 to its Southeast corner having Coordinates of X = 2,057,500.00 and Y = 452,100.00; thence East 1,852.00 feet to a point having Coordinates of X = 2,059,352.00 and Y = 452,100.00; thence South 3,500.00 feet to a point on the North boundary of State Lease No. 16625 having Coordinates of X = 2,059,352.00 and Y = 448,600.00; thence West 1,077.00 feet to the Northwest corner of said State Lease No. 16625 having Coordinates of X = 2,058,275.00 and Y = 448,600.00; thence West 5,228.00 feet to the Northeast corner of State Lease No. 16624 having Coordinates of X = 2,053,047.00 and Y = 448,600.00; thence West 6,497.00 feet on the North boundary of said State Lease No. 16624 to a point having Coordinates of X = 2,046,550.00 and Y = 448,600.00; thence North 1,400.00 feet to the Southeast corner of State Lease No. 16334 having Coordinates of X = 2,046,550.00 and Y = 450,000.00; thence North 1,950.00 feet on the East boundary of said State Lease No. 16334 to the Southwest corner of State Lease No. 16335 having Coordinates of X = 2,046,550.00 and Y = 451,950.00; thence East 2,950.00 feet on the South boundary of said State Lease No. 16335 to its Southeast corner having Coordinates of X = 2,049,500.00 and Y = 451,950.00; thence East 4,500.00 feet to the point of beginning, containing approximately 951 acres, as shown outlined in red on a plat on file in the Office of Mineral Resources, Department of Natural Resources. All bearings, distances and coordinates are based on Louisiana Coordinate System of 1927 (South Zone).

NOTE: The State of Louisiana does hereby reserve, and this lease shall be subject to, the imprescriptible right of surface use in the nature of a servitude in favor of the Department of Natural Resources, including its Offices and Commissions, for the sole purpose of implementing, constructing, servicing and maintaining approved coastal zone management and/or restoration projects. Utilization of any and all rights derived under this lease by the mineral lessee, its agents, successors or assigns, shall not interfere with nor hinder the reasonable surface use by the Department of Natural Resources, its Offices or Commissions, as hereinabove reserved.

Applicant: Merlin Exploration, Inc.

Bidder	Cash Payment	Price / Acre	Rental	Oil	Gas	Other



OFFICIAL COPY  
 OFFICE OF MINERAL RESOURCES  
 DEPT. OF NATURAL RESOURCES  
 DO NOT REMOVE

T 13 S - R 13 E  
 ASSUMPTION PARISH

2000 0 2000 Feet

P.O.B.  
 X= 2,054,000.00  
 Y= 451,950.00

TR 32646  
 951 +/- ACS.  
 JULY 2000