

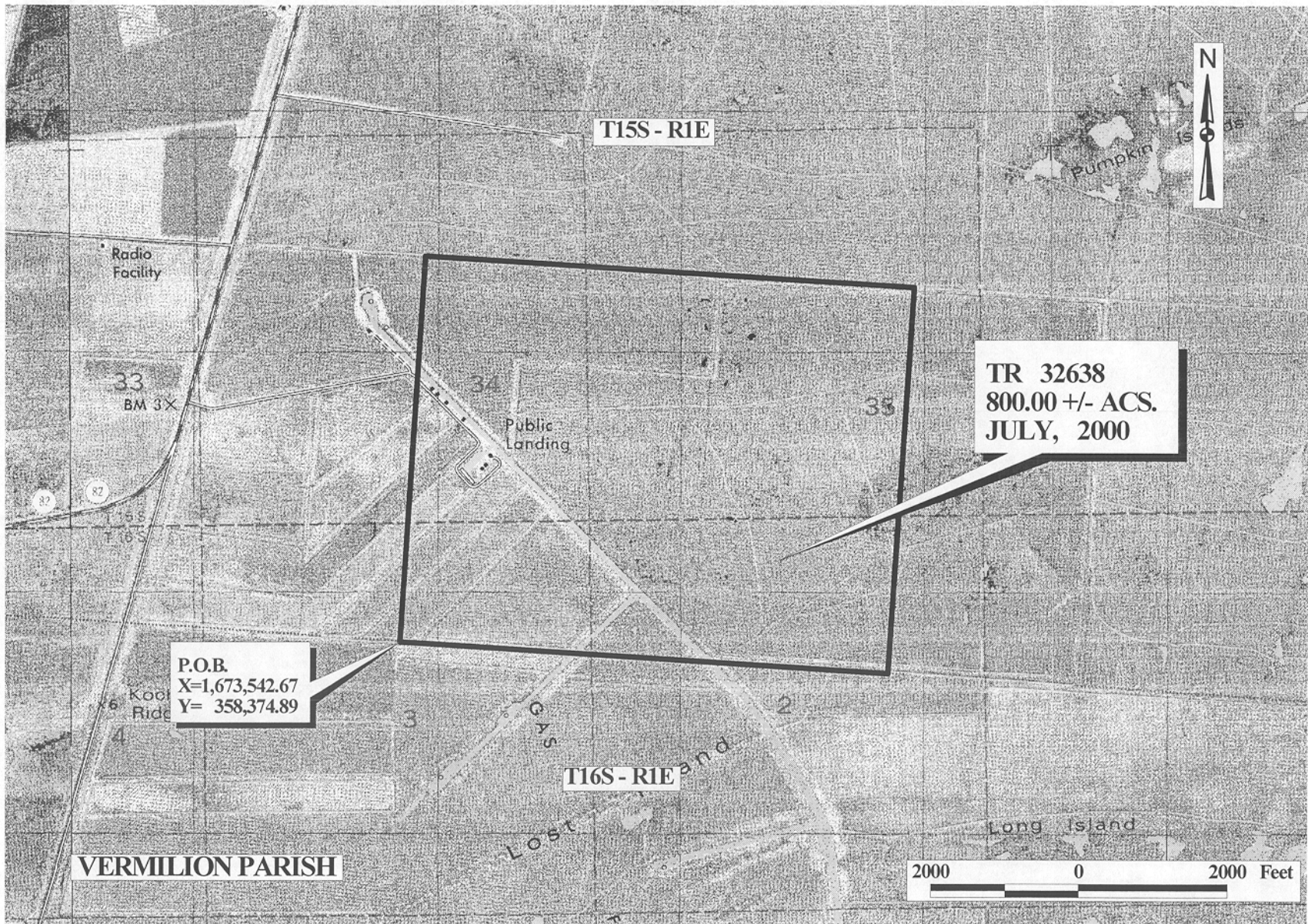
**TRACT 32638 - Vermilion Parish, Louisiana**

All lands owned by and not under mineral lease from the State of Louisiana on July 12, 2000, situated in Vermilion Parish, Louisiana, and being more fully described as follows: Beginning at a point having Coordinates of X = 1,673,542.67 and Y = 358,374.89; thence North 04 degrees 31 minutes 51 seconds East 5,280.00 feet to a point; thence South 85 degrees 28 minutes 09 seconds East 6,600.00 feet to a point having Coordinates of X = 1,680,539.14 and Y = 363,117.02; thence South 04 degrees 31 minutes 51 seconds West 5,280.00 feet to a point; thence North 85 degrees 28 minutes 09 seconds West 6,600.00 feet to the point of beginning, containing approximately 800.00 acres, as shown outlined in red on a plat on file in the Office of Mineral Resources, Department of Natural Resources. All bearings, distances and coordinates are based on Louisiana Coordinate System of 1927 (South Zone).

NOTE: The State of Louisiana does hereby reserve, and this lease shall be subject to, the imprescriptible right of surface use in the nature of a servitude in favor of the Department of Natural Resources, including its Offices and Commissions, for the sole purpose of implementing, constructing, servicing and maintaining approved coastal zone management and/or restoration projects. Utilization of any and all rights derived under this lease by the mineral lessee, its agents, successors or assigns, shall not interfere with nor hinder the reasonable surface use by the Department of Natural Resources, its Offices or Commissions, as hereinabove reserved.

Applicant: Bright Star Energy

Bidder	Cash Payment	Price / Acre	Rental	Oil	Gas	Other



**OFFICIAL COPY**  
**OFFICE OF MINERAL RESOURCES**  
**DEPT. OF NATURAL RESOURCES**  
**DO NOT REMOVE**

**TRACT 32639 - Vermilion Parish, Louisiana**

All lands owned by and not under mineral lease from the State of Louisiana on July 12, 2000, situated in Vermilion Parish, Louisiana, and being more fully described as follows: Beginning at a point having Coordinates of X = 1,680,126.21 and Y = 354,737.18; thence South 89 degrees 53 minutes 17 seconds West 6,601.45 feet to a point; thence North 00 degrees 21 minutes 10 seconds West 3,653.88 feet to a point having Coordinates of X = 1,673,502.27 and Y = 358,378.09; thence South 85 degrees 28 minutes 09 seconds East 6,625.44 feet to a point; thence South 00 degrees 21 minutes 10 seconds East 3,117.60 feet to the point of beginning, containing approximately **481.33 acres**, as shown outlined in red on a plat on file in the Office of Mineral Resources, Department of Natural Resources. All bearings, distances and coordinates are based on Louisiana Coordinate System of 1927 (South Zone).

NOTE: The State of Louisiana does hereby reserve, and this lease shall be subject to, the imprescriptible right of surface use in the nature of a servitude in favor of the Department of Natural Resources, including its Offices and Commissions, for the sole purpose of implementing, constructing, servicing and maintaining approved coastal zone management and/or restoration projects. Utilization of any and all rights derived under this lease by the mineral lessee, its agents, successors or assigns, shall not interfere with nor hinder the reasonable surface use by the Department of Natural Resources, its Offices or Commissions, as hereinabove reserved.

Applicant: Bright Star Energy

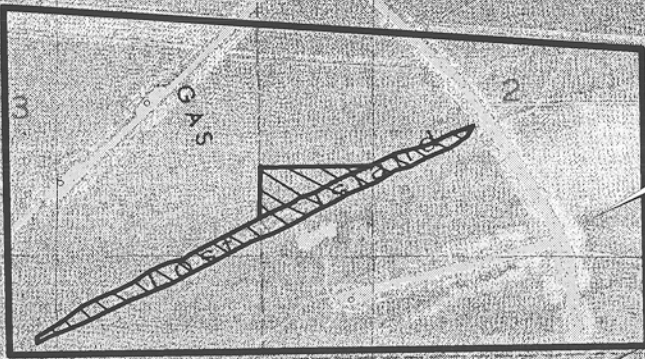
Bidder	Cash Payment	Price / Acre	Rental	Oil	Gas	Other



T15S - R1 E

VERMILION PARISH

TR 32639  
481.33 +/- ACS.  
JULY 2000

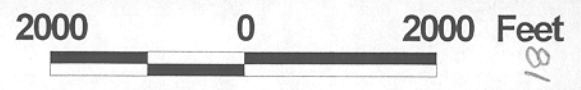


P.O.B.  
X= 1,680,126.21  
Y= 354,737.18

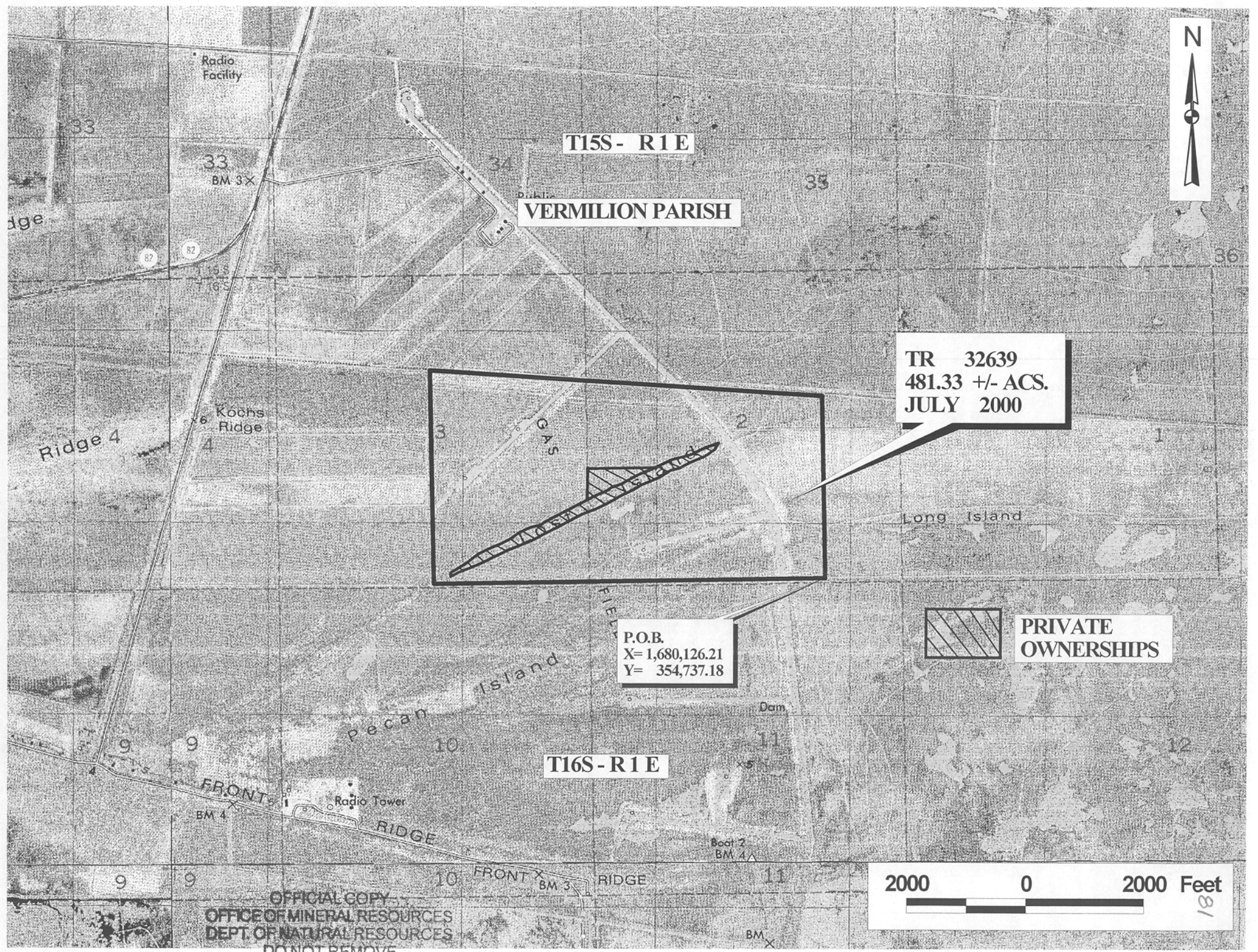


PRIVATE OWNERSHIPS

T16S - R1 E



OFFICIAL COPY  
OFFICE OF MINERAL RESOURCES  
DEPT. OF NATURAL RESOURCES  
DO NOT REMOVE



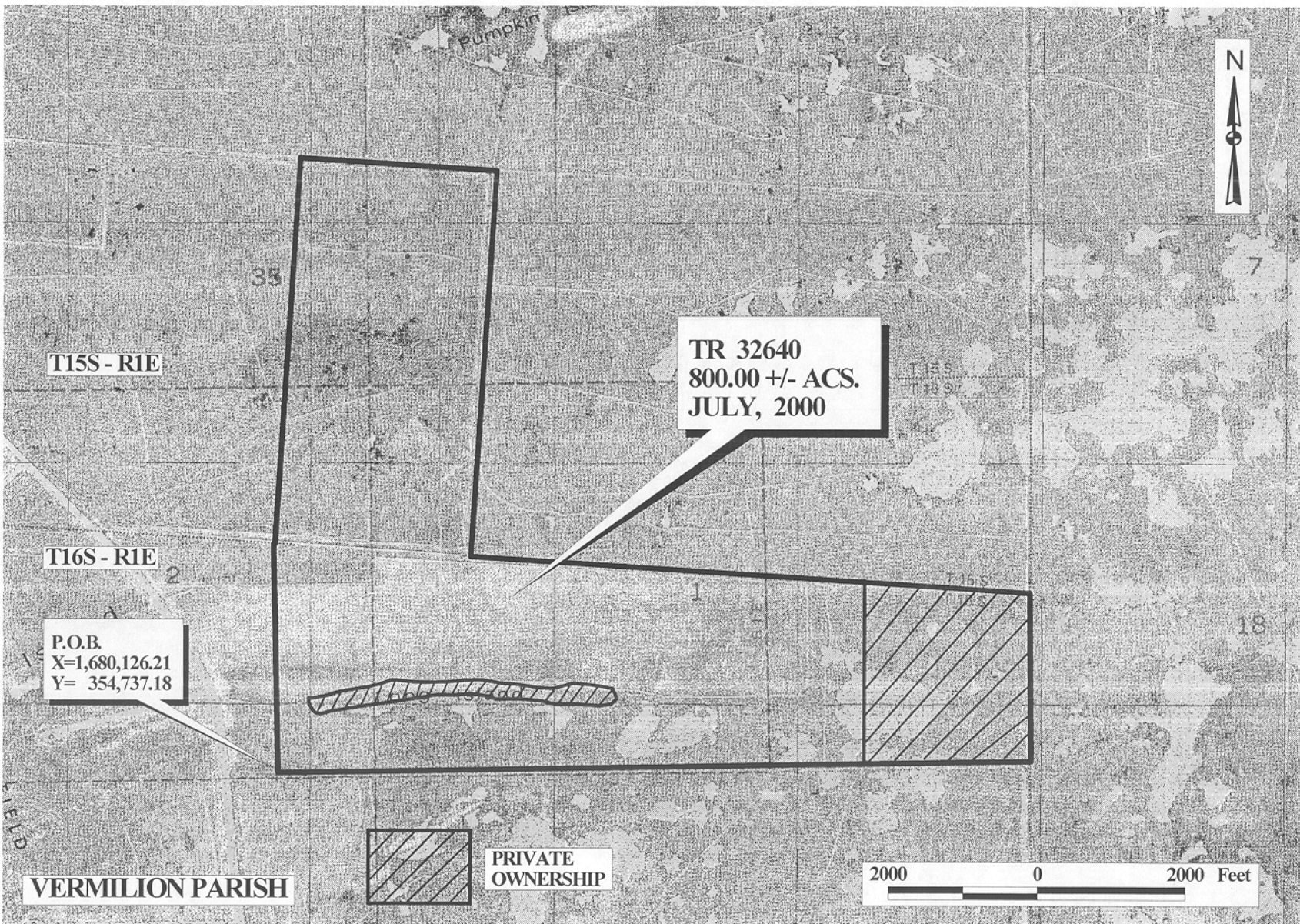
**TRACT 32640 - Vermilion Parish, Louisiana**

All lands owned by and not under mineral lease from the State of Louisiana on July 12, 2000, situated in Vermilion Parish, Louisiana, and being more fully described as follows: Beginning at a point having Coordinates of X = 1,680,126.21 and Y = 354,737.18; thence North 00 degrees 21 minutes 10 seconds West 3,117.60 feet to a point; thence South 85 degrees 28 minutes 09 seconds East 15.08 feet to a point; thence North 04 degrees 31 minutes 51 seconds East 5,280.00 feet to a point; thence South 85 degrees 28 minutes 09 seconds East 2,640.00 feet to a point having Coordinates of X = 1,683,170.89 and Y = 362,908.48; thence South 04 degrees 31 minutes 51 seconds West 5,280.00 feet to a point; thence South 85 degrees 28 minutes 09 seconds East 7,554.52 feet to a point; thence South 00 degrees 10 minutes 59 seconds West 2,291.20 feet to a point; thence South 89 degrees 53 minutes 17 seconds West 10,151.20 feet to the point of beginning, containing approximately 800 acres, as shown outlined in red on a plat on file in the Office of Mineral Resources, Department of Natural Resources. All bearings, distances and coordinates are based on Louisiana Coordinate System of 1927 (South Zone).

NOTE: The State of Louisiana does hereby reserve, and this lease shall be subject to, the imprescriptible right of surface use in the nature of a servitude in favor of the Department of Natural Resources, including its Offices and Commissions, for the sole purpose of implementing, constructing, servicing and maintaining approved coastal zone management and/or restoration projects. Utilization of any and all rights derived under this lease by the mineral lessee, its agents, successors or assigns, shall not interfere with nor hinder the reasonable surface use by the Department of Natural Resources, its Offices or Commissions, as hereinabove reserved.

Applicant: Bright Star Energy

Bidder	Cash Payment	Price / Acre	Rental	Oil	Gas	Other



TR 32640  
800.00 +/- ACS.  
JULY, 2000

T15S - R1E

T16S - R1E

P.O.B.  
X=1,680,126.21  
Y= 354,737.18

VERMILION PARISH

 PRIVATE OWNERSHIP

2000 0 2000 Feet

OFFICIAL COPY  
OFFICE OF MINERAL RESOURCES  
DEPT. OF NATURAL RESOURCES  
DO NOT REMOVE