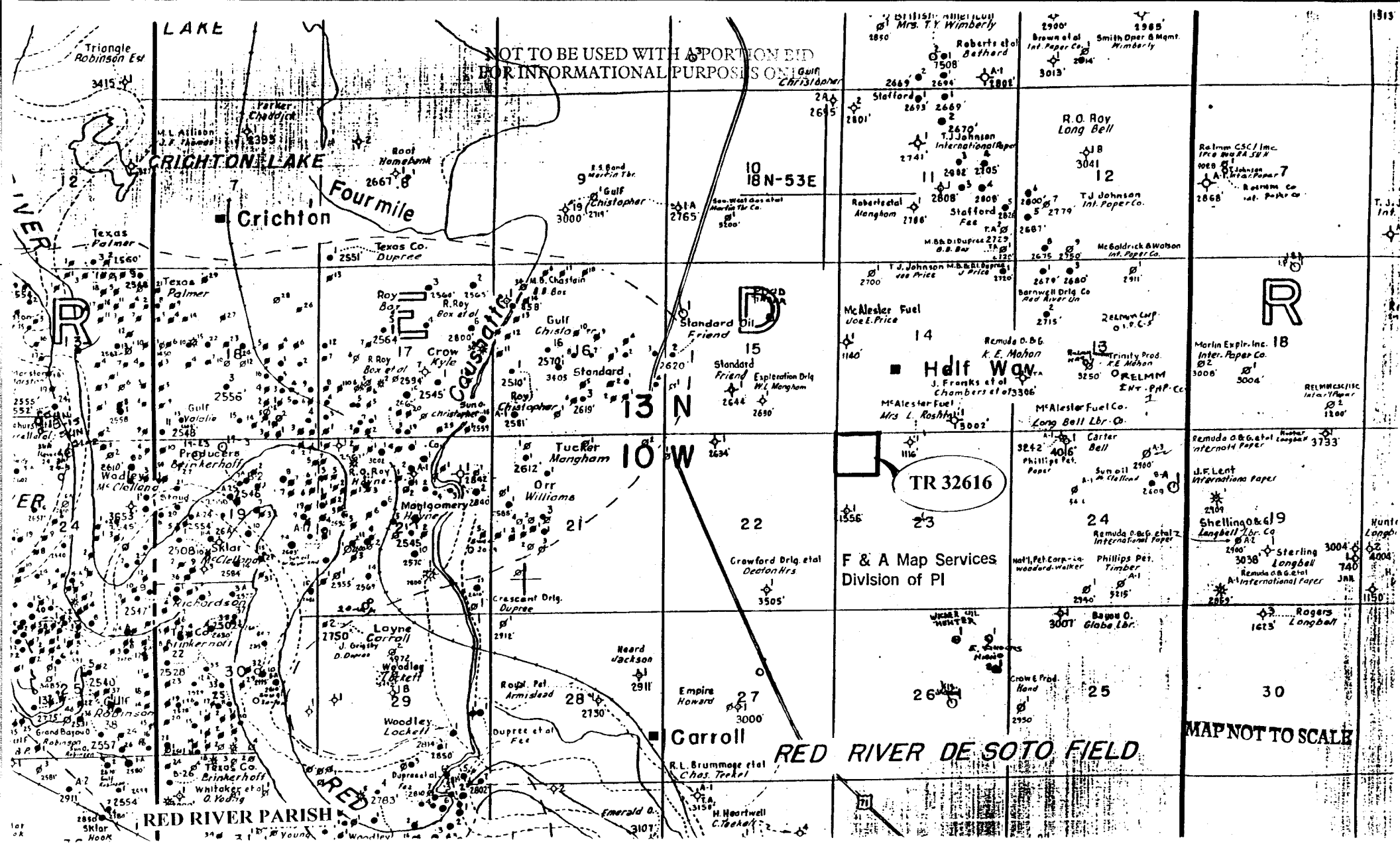


INLAND

TRACTS



NOT TO BE USED WITH A PORTION BID
FOR INFORMATIONAL PURPOSES ONLY

F & A Map Services
Division of PI

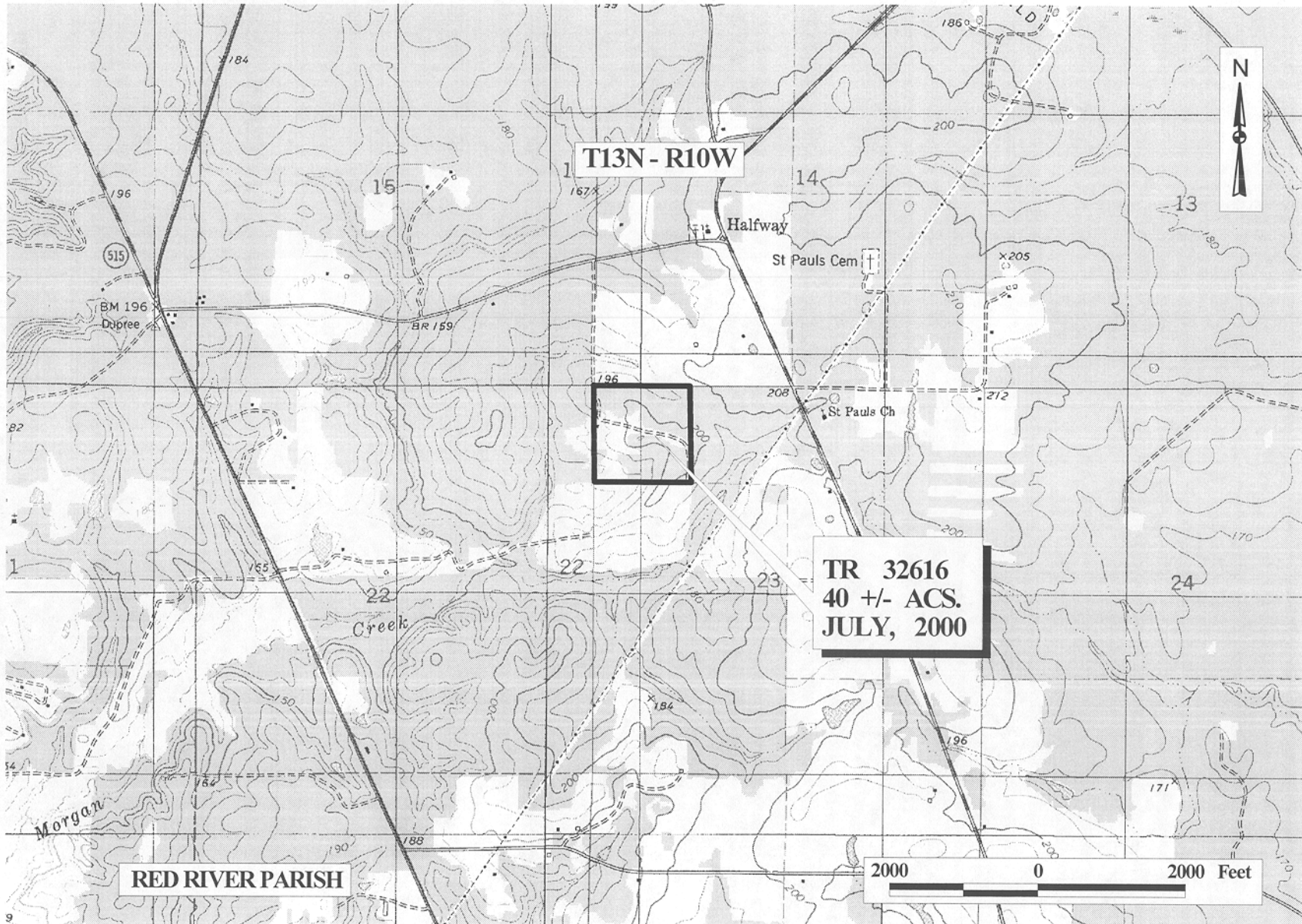
MAP NOT TO SCALE

TRACT 32616 - Red River Parish, Louisiana

All of the right, title and interest of the State of Louisiana in the mineral rights in and to the following described property, which is not under mineral lease from the State of Louisiana on July 12, 2000, situated in Red River Parish, Louisiana, and being more fully described as follows: An undivided 1/8 interest in and to the Northwest Quarter of the Northwest Quarter, Section 23, Township 13 North, Range 10 West, adjudicated to the State for unpaid taxes for the year 1939, in the name of Hannah Griffin, being State Patent No. 15477, containing approximately **40 acres**, as shown outlined in red on a plat on file in the Office of Mineral Resources, Department of Natural Resources. All bearings, distances and coordinates are based on Louisiana Coordinate System of 1927 (South Zone).

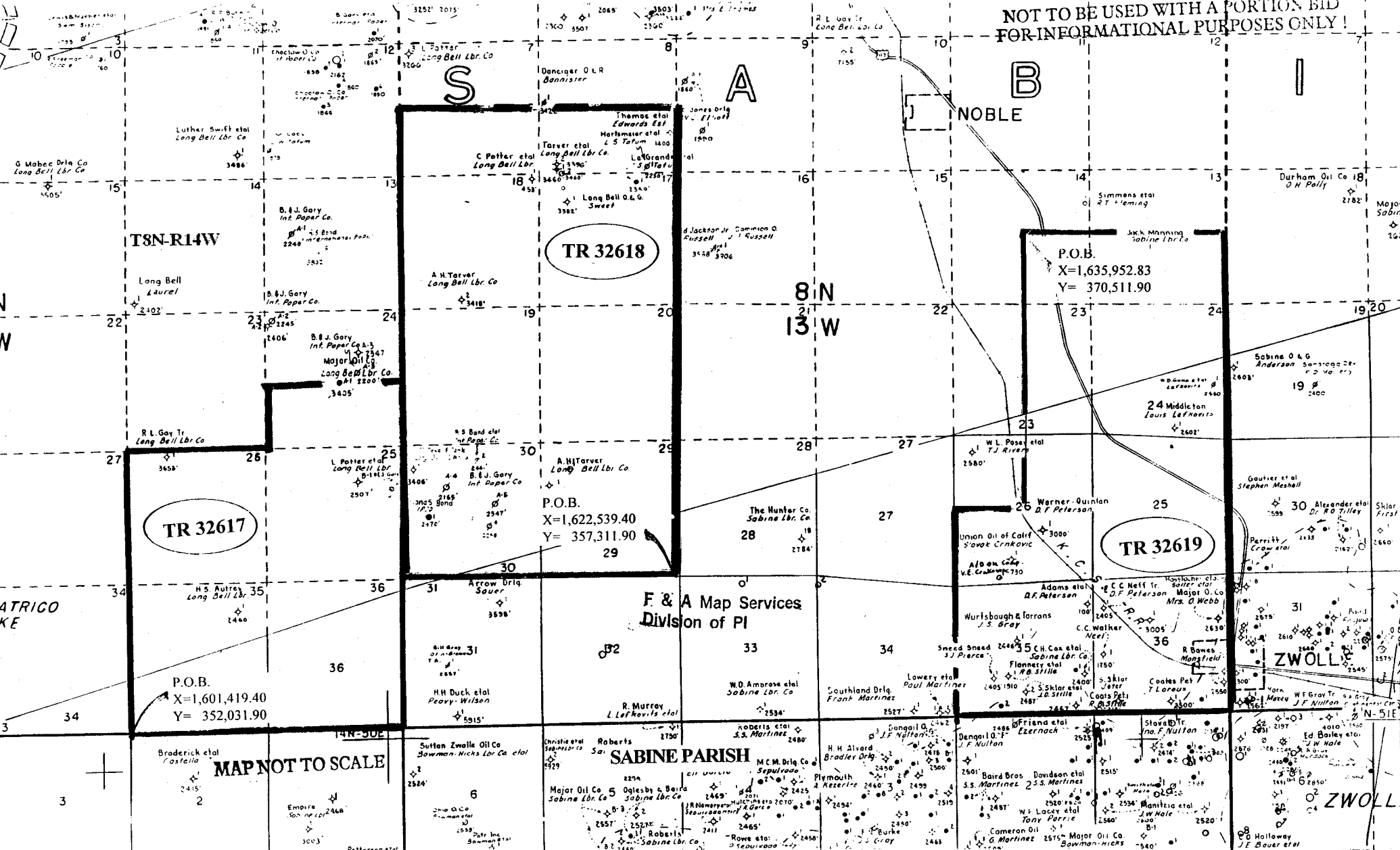
Applicant: Palmer Petroleum, Inc.

| Bidder | Cash Payment | Price / Acre | Rental | Oil | Gas | Other |
|--------|--------------|--------------|--------|-----|-----|-------|
| | | | | | | |
| | | | | | | |
| | | | | | | |
| | | | | | | |



OFFICIAL COPY
OFFICE OF MINERAL RESOURCES
DEPT. OF NATURAL RESOURCES
DO NOT REMOVE

NOT TO BE USED WITH A PORTION BID
FOR INFORMATIONAL PURPOSES ONLY!



T8N-R14W

TR 32618

TR 32617

P.O.B.
X=1,601,419.40
Y= 352,031.90

P.O.B.
X=1,622,539.40
Y= 357,311.90

P.O.B.
X=1,635,952.83
Y= 370,511.90

TR 32619

MAP NOT TO SCALE

SABINE PARISH

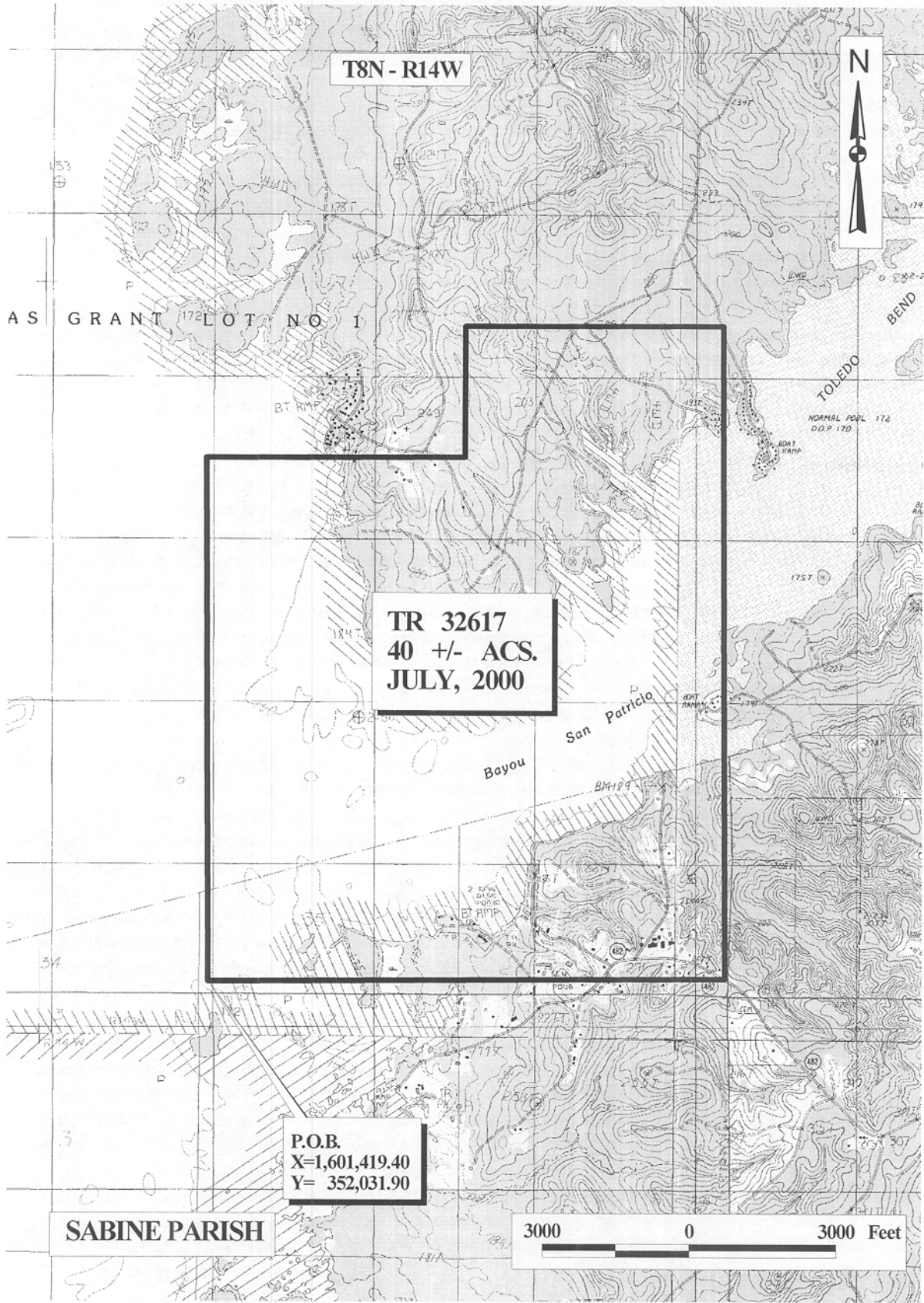
TRACT 32617 - Sabine Parish, Louisiana

All of the lands now or formerly constituting the beds and bottoms of all water bodies of every nature and description and all islands and other lands formed by accretion or reliction, except tax lands, owned by and not under mineral lease from the State of Louisiana on July 12, 2000, situated in Sabine Parish, Louisiana, within the following described boundaries: Beginning at a point having Coordinates of X = 1,601,419.40 and Y = 352,031.90; thence North 10,560.00 feet to a point having Coordinates of X = 1,601,419.40 and Y = 362,591.90; thence East 5,280.00 feet to a point having Coordinates of X = 1,606,699.40 and Y = 362,591.90; thence North 00 degrees 09 minutes 48 seconds East 2,640.01 feet to a point having Coordinates of X = 1,606,706.93 and Y = 365,231.90; thence East 5,272.47 feet to a point having Coordinates of X = 1,611,979.40 and Y = 365,231.90; thence South 13,200.00 feet to a point having Coordinates of X = 1,611,979.40 and Y = 352,031.90; thence West 10,560.00 feet to the point of beginning, containing approximately **40 acres**, as shown outlined in red on a plat on file in the Office of Mineral Resources, Department of Natural Resources. All bearings, distances and coordinates are based on Louisiana Coordinate System of 1927 (North Zone).

NOTE: This tract is located within the Sabine Wildlife Management Area. Any operations on said tract shall be coordinated with the Louisiana Department of Wildlife and Fisheries. Special Rules and Regulations have been promulgated by the Louisiana Department of Wildlife and Fisheries for the protection of the game and wildlife for some management areas. Any lease awarded by the Board on said tract shall be subject to any applicable Rules and Regulations of said management area. Copies of these Rules and Regulations may be obtained from the Louisiana Department of Wildlife and Fisheries through the Assistant Secretary, Office of Wildlife, upon request.

Applicant: Edward E. Willis

| Bidder | Cash Payment | Price / Acre | Rental | Oil | Gas | Other |
|--------|--------------|--------------|--------|-----|-----|-------|
| | | | | | | |
| | | | | | | |
| | | | | | | |
| | | | | | | |



T8N - R14W

AS GRANT LOT NO 1



TR 32617
 40 +/- ACS.
 JULY, 2000

San Patricia
 Bayou

TOLEDO
 BEND

NORMAL POOL 172
 D.O.P. 170

P.O.B.
 X=1,601,419.40
 Y= 352,031.90

SABINE PARISH

3000 0 3000 Feet

OFFICIAL COPY
 OFFICE OF MINERAL RESOURCES
 DEPT. OF NATURAL RESOURCES
 DO NOT REMOVE