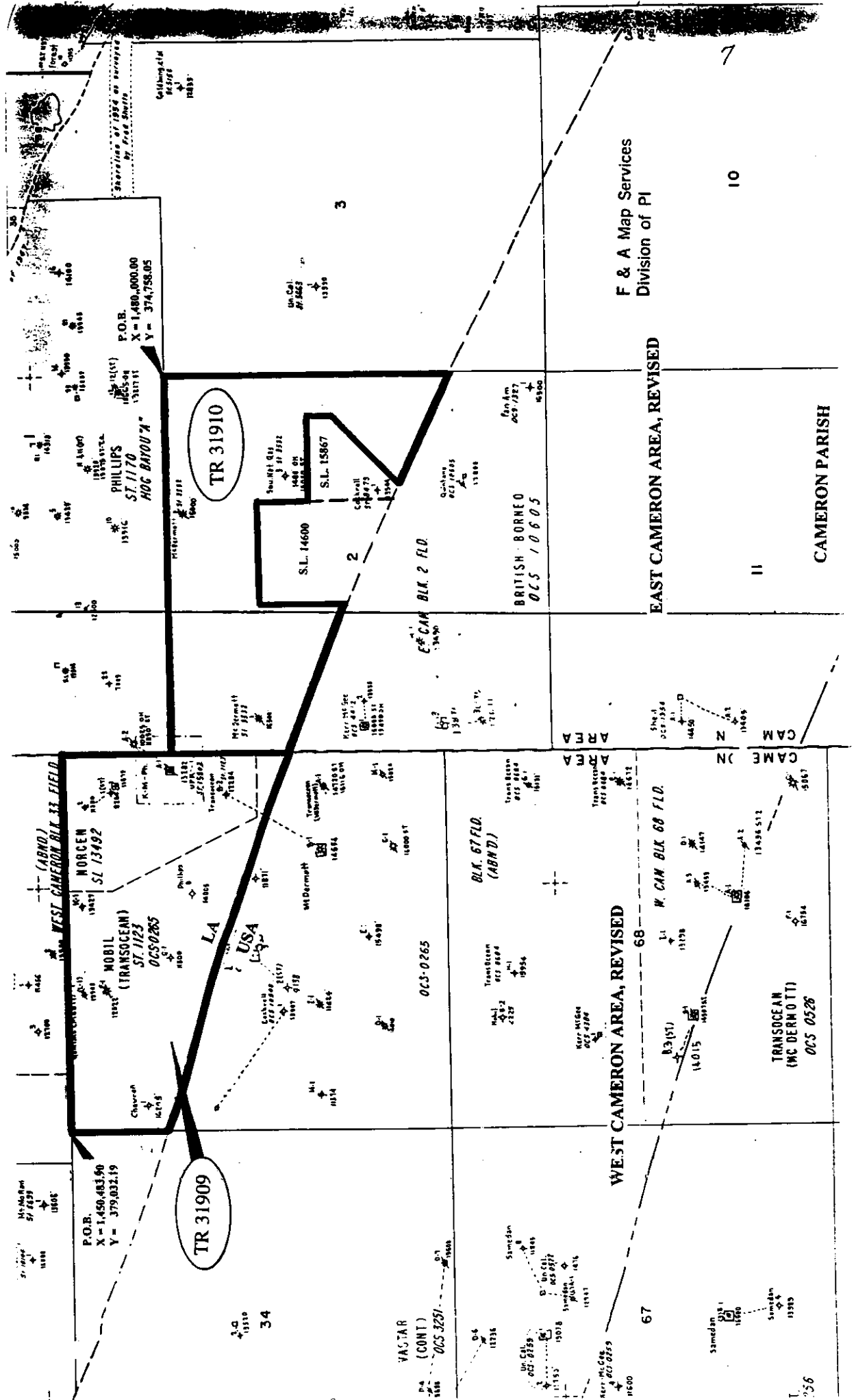


OFFSHORE TRACTS

MAP NOT TO SCALE

NOT TO BE USED WITH A PORTION BID FOR INFORMATIONAL PURPOSES ONLY!



F & A Map Services
Division of PI

EAST CAMERON AREA, REVISED

WEST CAMERON AREA, REVISED

CAMERON PARISH

TR 31909

TR 31910

P.O.I.
X=1,450,483.90
Y=379,032.19

MORCEAN (ABND)
S.L. 13492

MOBIL (TRANSOCEAN)
S.L. 1123
OCS 0265

S.L. 14600

S.L. 15867

W. CAN BLK. 2 FLD.

W. CAN BLK. 67 FLD.
(ABND)

W. CAN BLK. 68 FLD.

TRANSOCEAN
(MC DERMOTT)
OCS 0526

VACTAR
(CONT)
OCS 3257

BRITISH BORNEO
OCS 10605

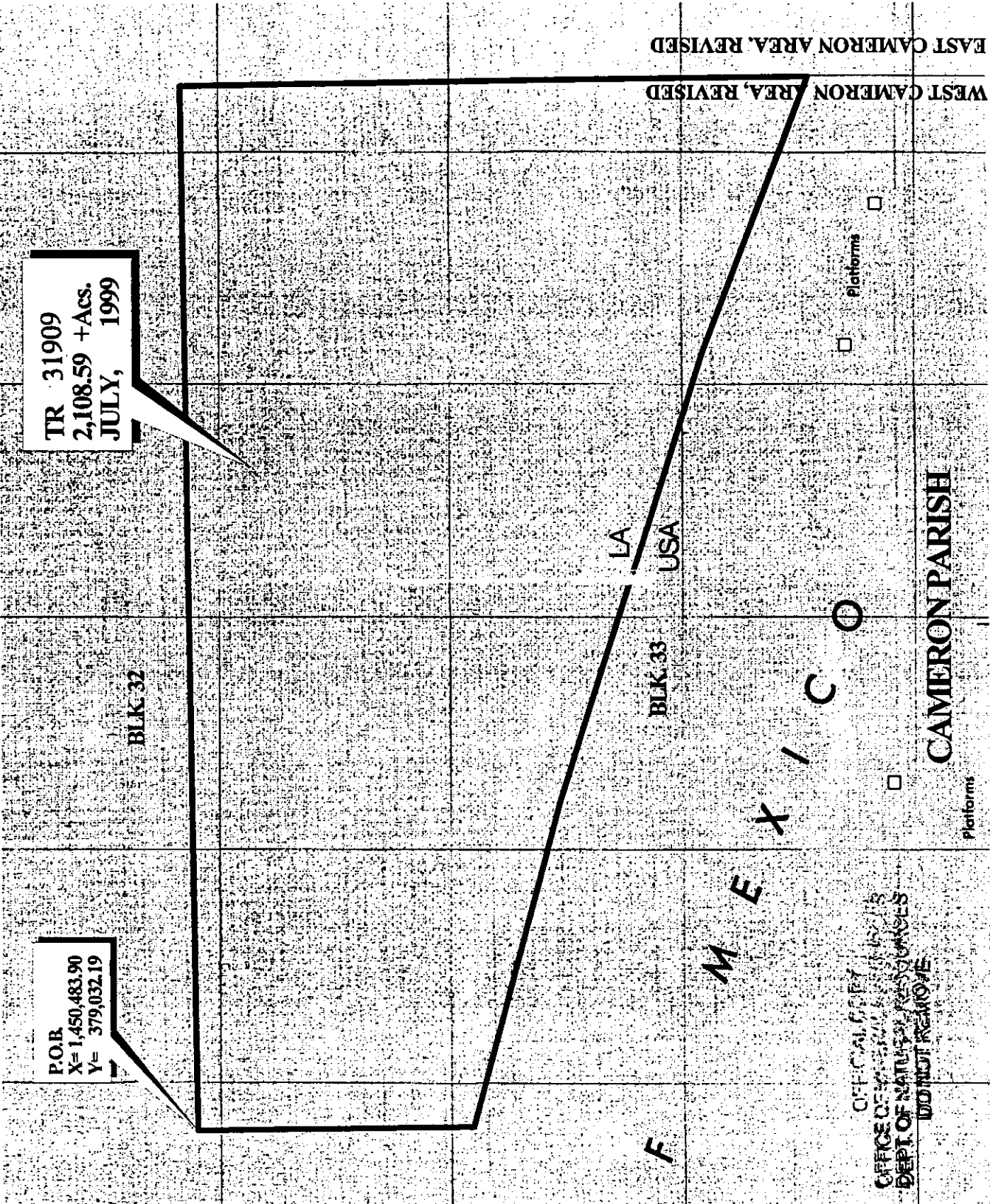
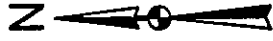
TRACT 31909 - PORTION OF BLOCK 33, WEST CAMERON AREA, REVISED, Cameron Parish, Louisiana

That portion of Block 33, West Cameron Area, Revised, Cameron Parish, Louisiana, belonging to the State of Louisiana and not under mineral lease on July 14, 1999, described as follows: Beginning at the Northwest corner of Block 33, West Cameron Area, Revised, having Coordinates of X = 1,450,483.90 and Y = 379,032.19; thence East 14,758.05 feet on the North line of said Block 33 to its Northeast corner having Coordinates of X = 1,465,241.95 and Y = 379,032.19; thence South 8,880.37 feet on the East line of said Block 33 to a point having Coordinates of X = 1,465,241.95 and Y = 370,151.82; thence Northwesterly on a straight line to a point having Coordinates of X = 1,464,632 and Y = 370,389; thence Northwesterly on an arc having a radius of 18,240.60 feet and a center at X = 1,471,240 and Y = 387,390 to a point having Coordinates of X = 1,464,433 and Y = 370,467; thence Northwesterly on a straight line to a point having Coordinates of X = 1,461,367 and Y = 371,700; thence Northwesterly on a straight line to a point having Coordinates of X = 1,455,041 and Y = 373,829; thence Northwesterly on a straight line to a point on the West line of said Block 33 having Coordinates of X = 1,450,483.90 and Y = 375,118.34; thence North 3,913.85 feet on the West line of said Block 33 to the point of beginning, containing approximately 2,108.59 acres, as shown outlined in red on a plat on file in the Office of Mineral Resources, Department of Natural Resources, **LESS AND EXCEPT** that portion thereof, if any, which is more than three nautical miles from the coast line as determined by the Report of the Special Master in the litigation in the Supreme Court of the United States styled United States v. State of Louisiana et al No. 9 Original, said three mile line as set out in the June, 1975, decree of the Supreme Court. All bearings, distances and coordinates are based on Louisiana Coordinate System of 1927 (South Zone).

NOTE: The State of Louisiana does hereby reserve, and this lease shall be subject to, the imprescriptible right of surface use in the nature of a servitude in favor of the Department of Natural Resources, including its Offices and Commissions, for the sole purpose of implementing, constructing, servicing and maintaining approved coastal zone management and/or restoration projects. Utilization of any and all rights derived under this lease by the mineral lessee, its agents, successors or assigns, shall not interfere with nor hinder the reasonable surface use by the Department of Natural Resources, its Offices or Commissions, as hereinabove reserved.

Applicant: Y.M. Billeaud

Bidder	Cash Payment	Price/Acre	Rental	Oil	Gas	Other



TRACT 31910 - PORTION OF BLOCK 2, EAST CAMERON AREA, REVISED, Cameron Parish, Louisiana

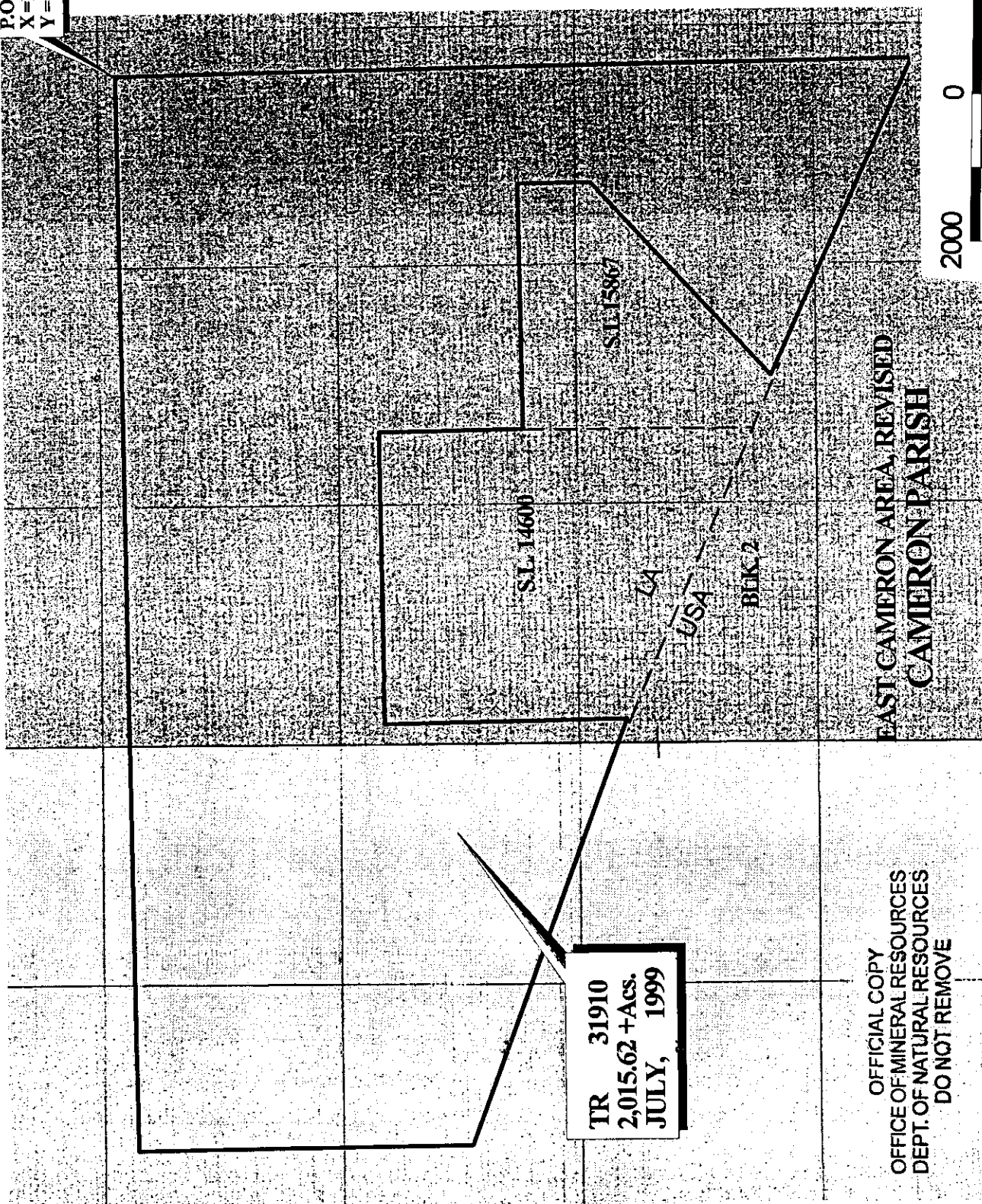
That portion of Block 2, East Cameron Area, Revised, Cameron Parish, Louisiana, belonging to the State of Louisiana and not under mineral lease on July 14, 1999, described as follows: Beginning at the Northeast corner of Block 2, East Cameron Area, Revised, having Coordinates of X = 1,480,000.00 and Y = 374,758.05; thence South 10,967.82 feet on the East line of said Block 2 to a point having Coordinates of X = 1,480,000.00 and Y = 363,790.23; thence Northwesterly on a straight line to the most Southerly Southeast corner of State Lease No. 15867 having Coordinates of X = 1,475,693.40 and Y = 365,823.61; thence on the boundary of said State Lease No. 15867 the following courses: North 48 degrees 00 minutes 00 seconds East 3,623.92 feet, North 1,000.00 feet and West 3,360.00 feet to its Northwest corner having Coordinates of X = 1,475,026.50 and Y = 369,248.49, also being a point on the East boundary of State Lease No. 14600; thence on the boundary of said State Lease No. 14600 the following courses: North 1,989.99 feet, West 4,000.00 feet and South 3,335.96 feet to its Southwest corner having Coordinates of X = 1,471,026.50 and Y = 367,902.52; thence Northwesterly on a straight line to a point on the West line of said Block 2 having Coordinates of X = 1,465,241.95 and Y = 370,151.82; thence North 4,606.23 feet on the West line of said Block 2 to its Northwest corner having Coordinates of X = 1,465,241.95 and Y = 374,758.05; thence East 14,758.05 feet to the point of beginning, containing approximately 2,015.62 acres, as shown outlined in red on a plat on file in the Office of Mineral Resources, Department of Natural Resources, **LESS AND EXCEPT** that portion thereof, if any, which is more than three nautical miles from the coast line as determined by the Report of the Special Master in the litigation in the Supreme Court of the United States styled United States v. State of Louisiana et al No. 9 Original, said three mile line as set out in the June, 1975, decree of the Supreme Court. All bearings, distances and coordinates are based on Louisiana Coordinate System of 1927 (South Zone).

NOTE: The State of Louisiana does hereby reserve, and this lease shall be subject to, the imprescriptible right of surface use in the nature of a servitude in favor of the Department of Natural Resources, including its Offices and Commissions, for the sole purpose of implementing, constructing, servicing and maintaining approved coastal zone management and/or restoration projects. Utilization of any and all rights derived under this lease by the mineral lessee, its agents, successors or assigns, shall not interfere with nor hinder the reasonable surface use by the Department of Natural Resources, its Offices or Commissions, as hereinabove reserved.

Applicant: Y.M. Billeaud

Bidder	Cash Payment	Price/Acre	Rental	Oil	Gas	Other

P.O.B.
X = 1,480,000.00
Y = 374,758.05



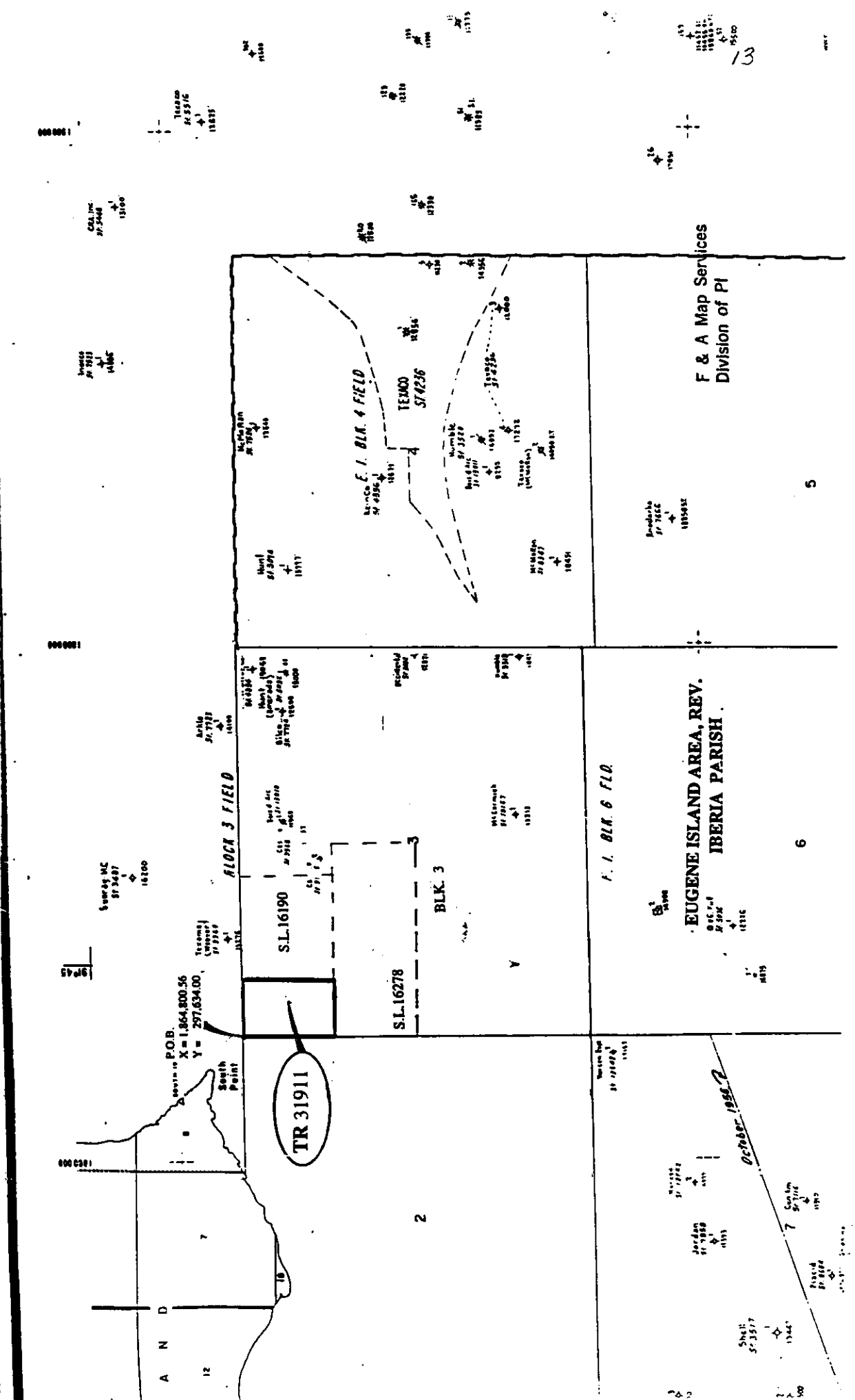
EAST CAMERON AREA, REVISED
CAMERON PARISH

TR 31910
2,015.62 + ACS.
JULY, 1999

OFFICIAL COPY
OFFICE OF MINERAL RESOURCES
DEPT. OF NATURAL RESOURCES
DO NOT REMOVE

MAP NOT TO SCALE

NOT TO BE USED WITH A PORTION BID
FOR INFORMATIONAL PURPOSES ONLY!



TRACT 31911 - PORTION OF BLOCK 3, EUGENE ISLAND AREA, REVISED, Iberia Parish, Louisiana

That portion of Block 3, Eugene Island Area, Revised, Iberia Parish, Louisiana, belonging to the State of Louisiana and not under mineral lease on July 14, 1999, described as follows: Beginning at a point being the Northwest corner of Block 3, Eugene Island Area, Revised, having Coordinates of X = 1,864,800.56 and Y = 297,634.00; thence East 1,950.00 feet on the North line of said Block 3 to the Northwest corner of State Lease No. 16190 having Coordinates of X = 1,866,750.56 and Y = 297,634.00; thence South 3,500.00 feet to the Southwest corner of said State Lease No. 16190 which lies on the North line of State Lease No. 16278 having Coordinates of X = 1,866,750.56 and Y = 294,134.00; thence West 1,950.00 feet along the North line of said State Lease No. 16278 to its Northwest corner which lies on the West line of said Block 3 having Coordinates of X = 1,864,800.56 and Y = 294,134.00; thence North 3,500.00 feet along said West line of said Block 3 to the point of beginning, containing approximately 156.68 acres, as shown outlined in red on a plat on file in the Office of Mineral Resources, Department of Natural Resources. All bearings, distances and coordinates are based on Louisiana Coordinate System of 1927 (South Zone).

NOTE: The above tract is located in an oyster restricted area and all operations in such area must be conducted in strict conformity with the stipulations and/or regulations of the Louisiana Department of Wildlife and Fisheries.

NOTE: The above described tract is in the vicinity of existing shell reefs where drilling and dredging operations must be conducted in strict conformity with the regulations adopted by the Louisiana Department of Wildlife and Fisheries and/or the U.S. Corps of Engineers.

NOTE: A portion of this Tract lies within one nautical mile of the boundary of the Russell Sage or Marsh Island Wildlife Refuge and Game Preserve. Any activities which pose potential environmental impacts to Marsh Island Refuge will require prior coordination and approval of the Louisiana Department of Wildlife and Fisheries.

NOTE: The State of Louisiana does hereby reserve, and this lease shall be subject to, the imprescriptible right of surface use in the nature of a servitude in favor of the Department of Natural Resources and the Louisiana Department of Wildlife and Fisheries, including its Offices and Commissions, for the sole purpose of implementing, constructing, servicing and maintaining approved coastal zone management and/or restoration projects. Utilization of any and all rights derived under this lease by the mineral lessee, its agents, successors or assigns, shall not interfere with nor hinder the reasonable surface use by the Department of Natural Resources and the Louisiana Department of Wildlife and Fisheries, its Offices or Commissions, as hereinabove reserved.

Tract Advertised by the State Mineral Board

Bidder	Cash Payment	Price/Acre	Rental	Oil	Gas	Other

OFFICIAL COPY
OFFICE OF MINERAL RESOURCES
DEPT. OF NATURAL RESOURCES
DO NOT REMOVE

TR 31911
156.68 + Acs.
JULY, 1999

P.O.B.
X = 1,864,800.56
Y = 297,634.00

Y = 297,634.00

S.L. 16190

S.L. 16278

X = 1,863,474
Y = 298,772

Y = 284,391.16

Y = 283,000.00

IBERIA PARISH

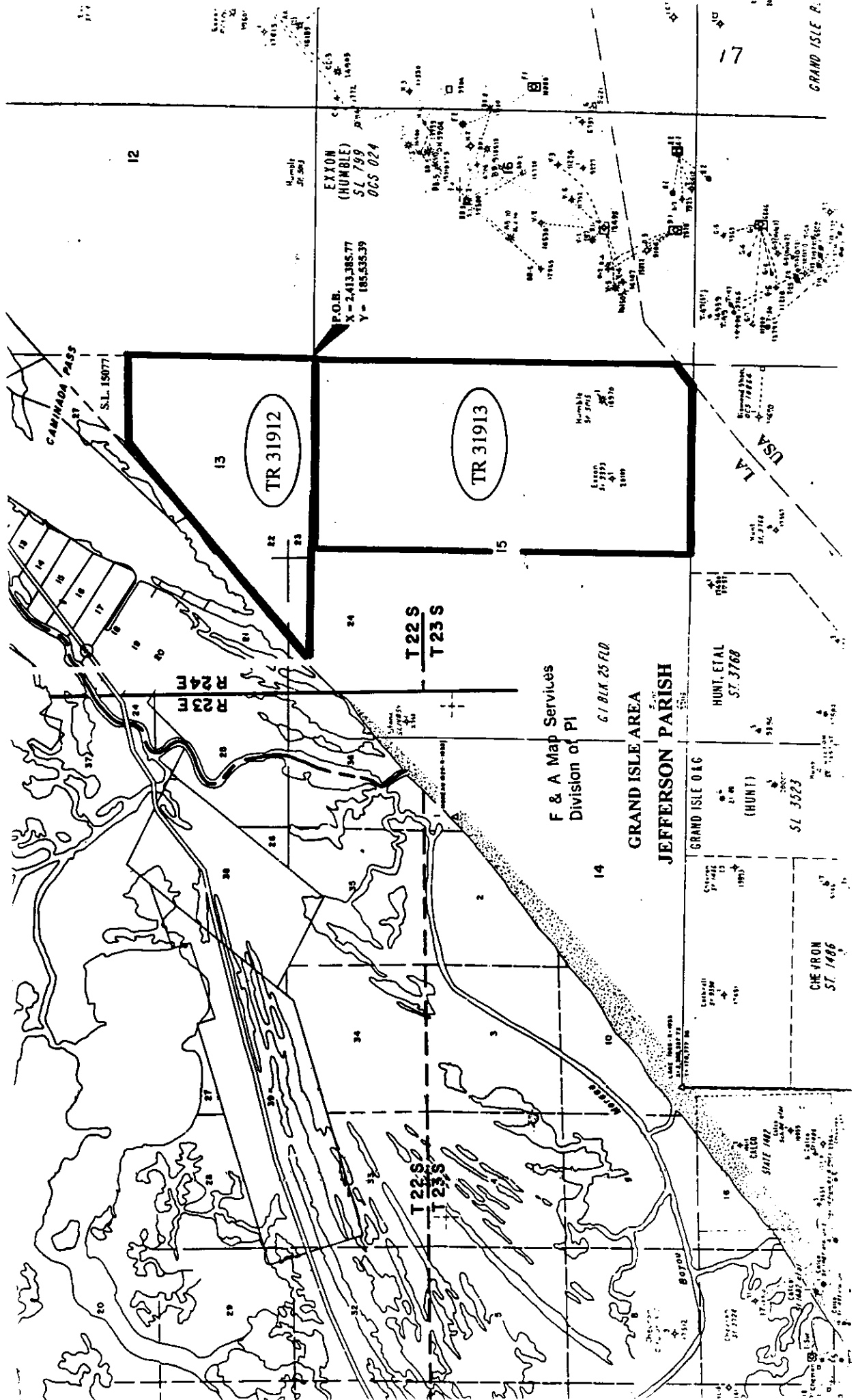
EUGENE ISLAND AREA, REV.

X = 1,872,418
Y = 277,460



MAP NOT TO SCALE

NOT TO BE USED WITH A PORTION BID
FOR INFORMATIONAL PURPOSES ONLY!

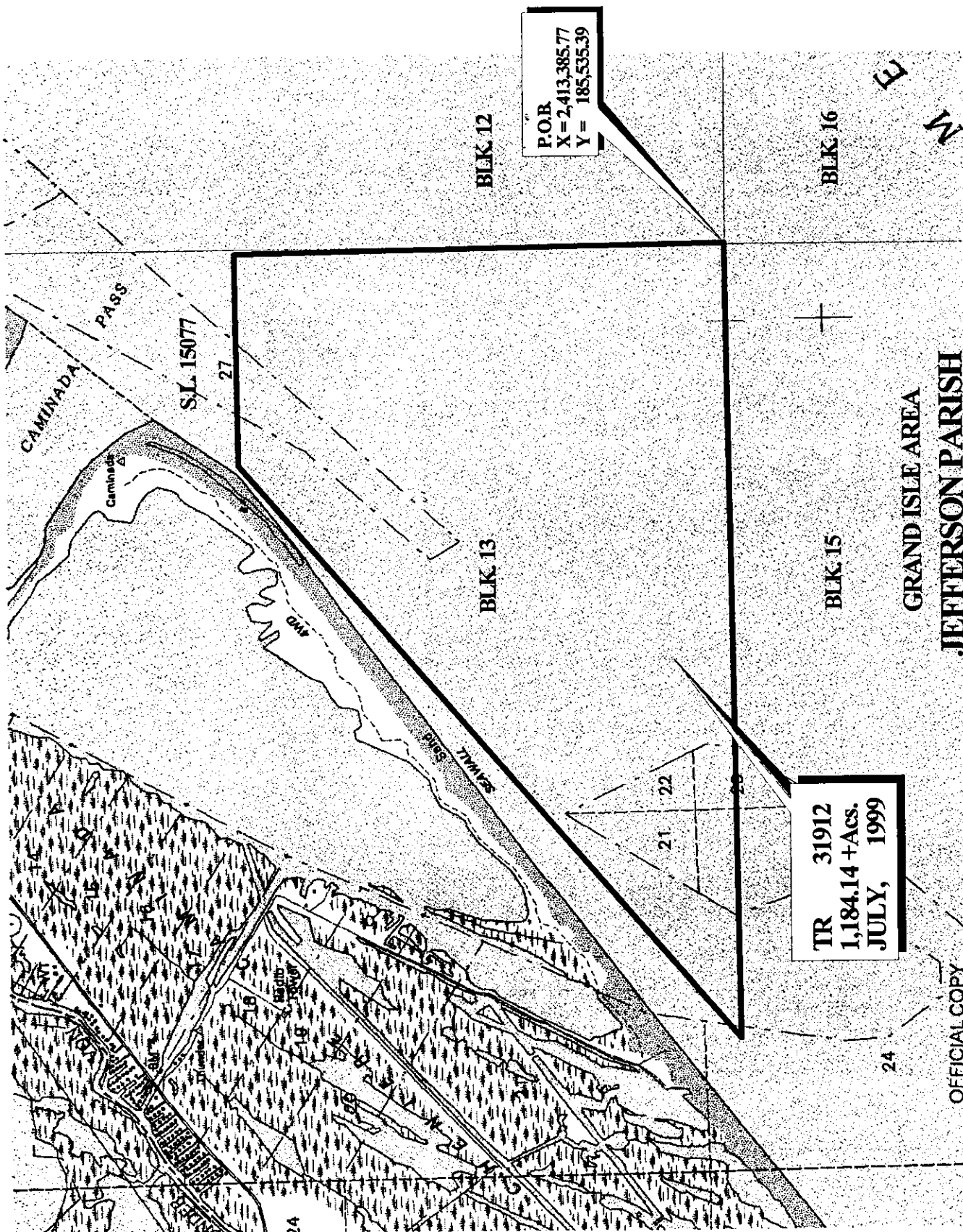


TRACT 31912 - PORTION OF BLOCK 13, GRAND ISLE AREA, Jefferson Parish, Louisiana

That portion of Block 13, Grand Isle Area, Jefferson Parish, Louisiana, belonging to the State of Louisiana and not under mineral lease on July 14, 1999, described as follows: Beginning at the Southeast corner of Block 13, Grand Isle Area, having Coordinates of X = 2,413,385.77 and Y = 185,535.39; thence West 11,456.74 feet on the South line of said Block 13 to a point having Coordinates of X = 2,401,929.03 and Y = 185,535.39; thence Northeasterly on a straight line to a point having Coordinates of X = 2,406,890 and Y = 189,733; thence Northeasterly on a straight line to the Southwest corner of State Lease No. 15077 having Coordinates of X = 2,410,330 and Y = 192,644; thence East 3,055.77 feet on the South line of said State Lease No. 15077 to its Southeast corner, also being a point on the East line of said Block 13 having Coordinates of X = 2,413,385.77 and Y = 192,644.00; thence South 7,108.61 feet on the East line of said Block 13 to the point of beginning, containing approximately 1,184.14 acres, as shown outlined in red on a plat on file in the Office of Mineral Resources, Department of Natural Resources. All bearings, distances and coordinates are based on Louisiana Coordinate System of 1927 (South Zone).

Applicant: EKG Services

Bidder	Cash Payment	Price/Acre	Rental	Oil	Gas	Other



P.O.B.
 X = 2,413,385.77
 Y = 185,535.39

TR 31912
 1,184.14 + Acs.
 JULY, 1999



OFFICIAL COPY
 OFFICE OF MINERAL RESOURCES
 DEPT. OF NATURAL RESOURCES
 DO NOT REMOVE

TRACT 31913 - PORTION OF BLOCK 15, GRAND ISLE AREA, Jefferson Parish, Louisiana

That portion of Block 15, Grand Isle Area, Jefferson Parish, Louisiana, belonging to the State of Louisiana and not under mineral lease on July 14, 1999, described as follows: Beginning at the Northeast corner of Block 15, Grand Isle Area, having Coordinates of X = 2,413,385.77 and Y = 185,535.39; thence South 14,200.20 feet on the East line of said Block 15 to a point on the 1975 3-Mile Decree Line having Coordinates of X = 2,413,385.77 and Y = 171,335.19; thence Southwesterly on a straight line on said 3-Mile Decree Line to a point on the South line of said Block 15 having Coordinates of X = 2,412,726.47 and Y = 170,777.35; thence West 6,719.72 feet on the South line of said Block 15 to a point having Coordinates of X = 2,406,006.75 and Y = 170,777.35; thence North 14,758.04 feet to a point on the North line of said Block 15 having Coordinates of X = 2,406,006.75 and Y = 185,535.39; thence East 7,379.02 feet on the North line of said Block 15 to the point of beginning, containing approximately 2,495.78 acres, as shown outlined in red on a plat on file in the Office of Mineral Resources, Department of Natural Resources, **LESS AND EXCEPT** that portion thereof, if any, which is more than three nautical miles from the coast line as determined by the Report of the Special Master in the litigation in the Supreme Court of the United States styled United States v. State of Louisiana et al No. 9 Original, said three mile line as set out in the June, 1975, decree of the Supreme Court. All bearings, distances and coordinates are based on Louisiana Coordinate System of 1927 (South Zone).

NOTE: The State of Louisiana does hereby reserve, and this lease shall be subject to, the imprescriptible right of surface use in the nature of a servitude in favor of the Department of Natural Resources, including its Offices and Commissions, for the sole purpose of implementing, constructing, servicing and maintaining approved coastal zone management and/or restoration projects. Utilization of any and all rights derived under this lease by the mineral lessee, its agents, successors or assigns, shall not interfere with nor hinder the reasonable surface use by the Department of Natural Resources, its Offices or Commissions, as hereinabove reserved.

Applicant: EKG Services

Bidder	Cash Payment	Price/Acre	Rental	Oil	Gas	Other

21 22

23

BLK 13

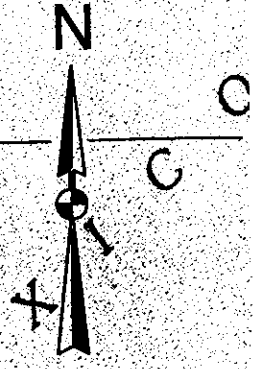
BLK 15

BLK 16

G U L F O F

P.O.B.
X= 2,413,385.77
Y= 185,535.39

TR 31913
2,495.78 + ACS.
JULY 1999

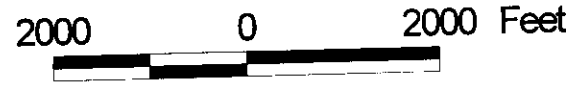


GRAND ISLE AREA
JEFFERSON PARISH

BLK 24

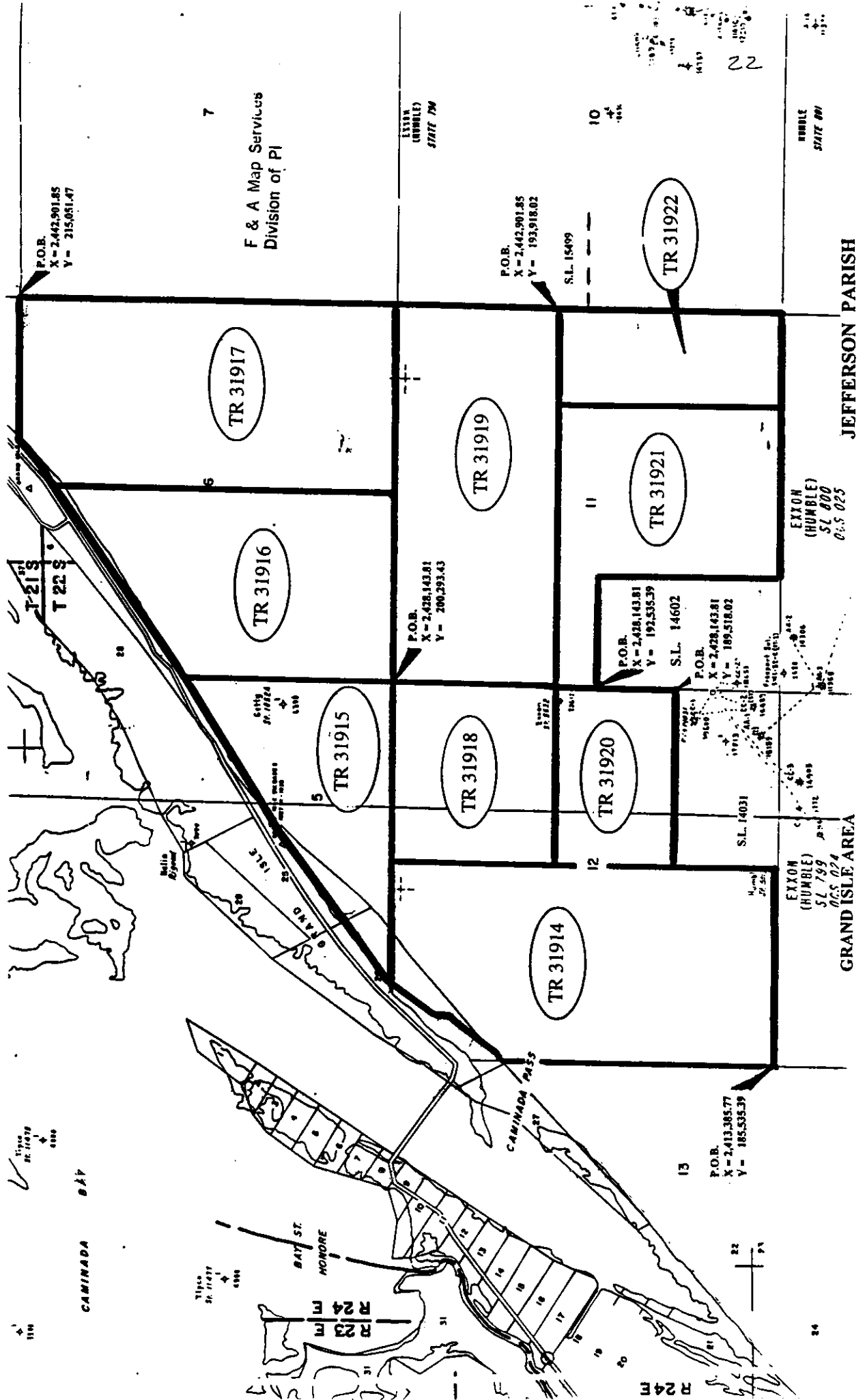
LA
USA

OFFICIAL COPY
OFFICE OF MINERAL RESOURCES
DEPT. OF NATURAL RESOURCES
DO NOT REMOVE



MAP NOT TO SCALE

NOT TO BE USED WITH A PORTION BID
FOR INFORMATIONAL PURPOSES ONLY!



TRACT 31914 - PORTION OF BLOCK 12, GRAND ISLE AREA, Jefferson Parish, Louisiana

That portion of Block 12, Grand Isle Area, Jefferson Parish, Louisiana, belonging to the State of Louisiana and not under mineral lease on July 14, 1999, described as follows: Beginning at the Southwest corner of Block 12, Grand Isle Area, having Coordinates of X = 2,413,385.77 and Y = 185,535.39; thence North 10,439.67 feet on the West line of said Block 12 to its most Southerly Northwest corner having Coordinates of X = 2,413,385.77 and Y = 195,975.06; thence Northeasterly on a straight line to a point having Coordinates of X = 2,413,785 and Y = 196,242; thence Northeasterly on a straight line to a point having Coordinates of X = 2,415,068 and Y = 197,994; thence Northeasterly on a straight line to a point having Coordinates of X = 2,415,162 and Y = 198,637; thence Northeasterly on a straight line to the most Northerly Northwest corner of said Block 12 having Coordinates of X = 2,416,413.61 and Y = 200,293.43; thence East 4,730.20 feet on the North line of said Block 12 to a point having Coordinates of X = 2,421,143.81 and Y = 200,293.43; thence South 10,775.41 feet to the Northwest corner of State Lease No. 14031 having Coordinates of X = 2,421,143.81 and Y = 189,518.02; thence South 3,982.63 feet on the West line of said State Lease No. 14031 to its Southwest corner also being a point on the South line of said Block 12 having Coordinates of X = 2,421,143.81 and Y = 185,535.39; thence West 7,758.04 feet on the South line of said Block 12 to the point of beginning, containing approximately 2,468.46 acres, as shown outlined in red on a plat on file in the Office of Mineral Resources, Department of Natural Resources. All bearings, distances and coordinates are based on Louisiana Coordinate System of 1927 (South Zone).

NOTE: The State of Louisiana does hereby reserve, and this lease shall be subject to, the imprescriptible right of surface use in the nature of a servitude in favor of the Department of Natural Resources, including its Offices and Commissions, for the sole purpose of implementing, constructing, servicing and maintaining approved coastal zone management and/or restoration projects. Utilization of any and all rights derived under this lease by the mineral lessee, its agents, successors or assigns, shall not interfere with nor hinder the reasonable surface use by the Department of Natural Resources, its Offices or Commissions, as hereinabove reserved.

Applicant: EKG Services

Bidder	Cash Payment	Price/Acre	Rental	Oil	Gas	Other

24

N



TR 31914
2,468.46 +Acs.
JULY, 1999

CAMINADA
PASS

BLK. 13

BLK. 12

OFFICIAL COPY
OFFICE OF MINERAL RESOURCES
DEPT. OF NATURAL RESOURCES
DO NOT REMOVE

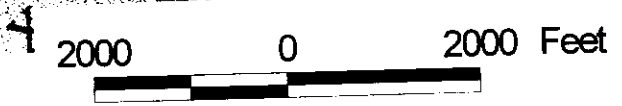
P.O.B.
X = 2,413,385.77
Y = 185,535.39

S.L. 14031

BLK. 15

GRAND ISLE AREA
JEFFERSON PARISH

BLK. 16



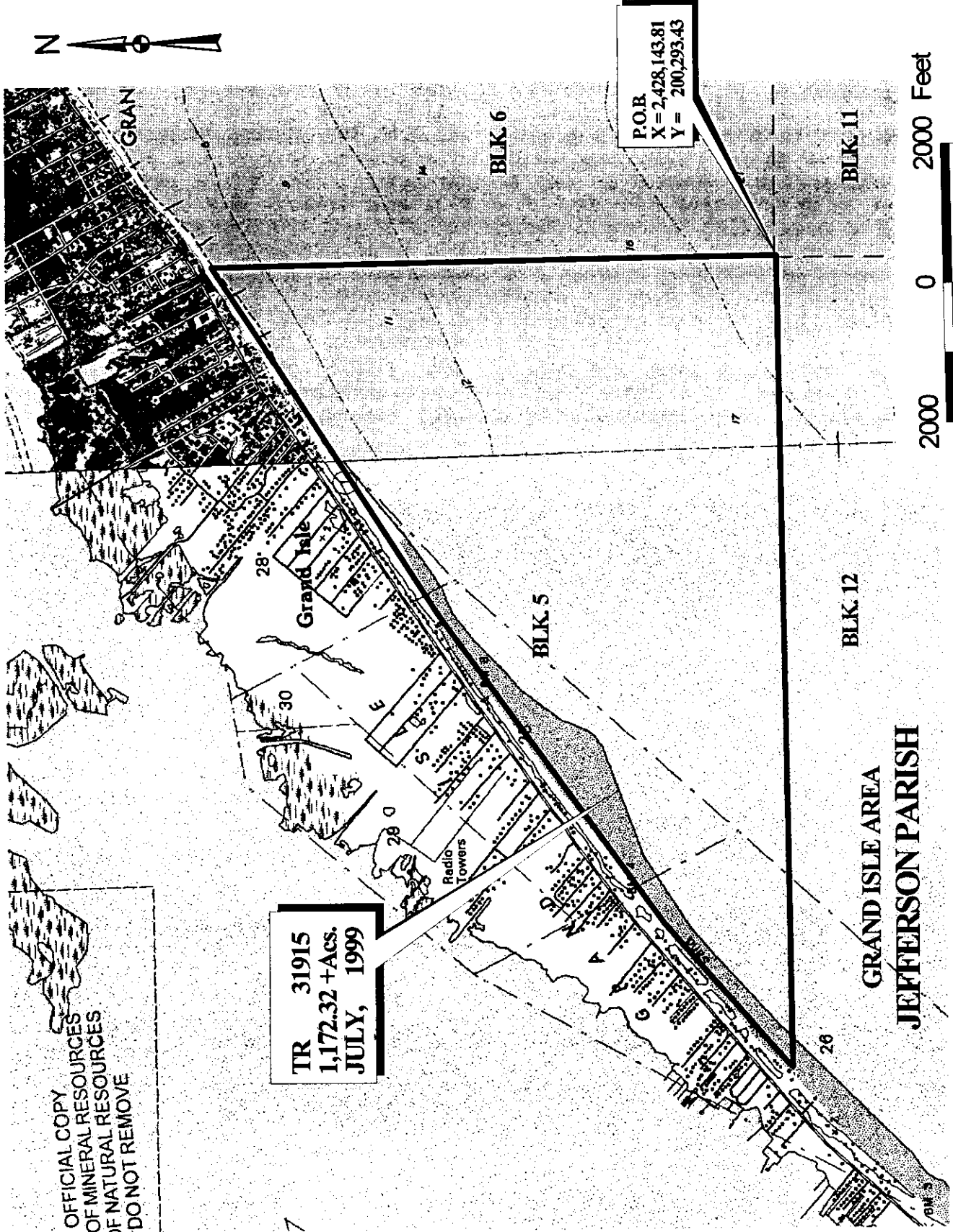
TRACT 31915 - BLOCK 5, GRAND ISLE AREA, Jefferson Parish, Louisiana

Block 5, Grand Isle Area, Jefferson Parish, Louisiana, belonging to the State of Louisiana and not under mineral lease on July 14, 1999, described as follows: Beginning at the Southeast corner of Block 5, Grand Isle Area, having Coordinates of X = 2,428,143.81 and Y = 200,293.43; thence West 11,730.20 feet on the South line of said Block 5 to a point having Coordinates of X = 2,416,413.61 and Y = 200,293.43; thence Northeasterly on a straight line to a point having Coordinates of X = 2,416,442 and Y = 200,331; thence Northeasterly on a straight line to a point having Coordinates of X = 2,418,510 and Y = 202,105; thence Northeasterly on a straight line to a point having Coordinates of X = 2,423,068 and Y = 205,322; thence Northeasterly on a straight line to a point having Coordinates of X = 2,426,997 and Y = 207,772; thence Northeasterly on a straight line to the Northeast corner of said Block 5 having Coordinates of X = 2,428,143.81 and Y = 208,502.22; thence South 8,208.79 feet on said East line of said Block 5 to the point of beginning, containing approximately 1,172.32 acres, as shown outlined in red on a plat on file in the Office of Mineral Resources, Department of Natural Resources. All bearings, distances and coordinates are based on Louisiana Coordinate System of 1927 (South Zone).

NOTE: The State of Louisiana does hereby reserve, and this lease shall be subject to, the imprescriptible right of surface use in the nature of a servitude in favor of the Department of Natural Resources, including its Offices and Commissions, for the sole purpose of implementing, constructing, servicing and maintaining approved coastal zone management and/or restoration projects. Utilization of any and all rights derived under this lease by the mineral lessee, its agents, successors or assigns, shall not interfere with nor hinder the reasonable surface use by the Department of Natural Resources, its Offices or Commissions, as hereinabove reserved.

Applicant: EKG Services

Bidder	Cash Payment	Price/Acre	Rental	Oil	Gas	Other



P.O.B.
 X = 2,428,143.81
 Y = 200,293.43

TR 31915
 1,172.32 + ACS.
 JULY, 1999



OFFICIAL COPY
 OFFICE OF MINERAL RESOURCES
 DEPT. OF NATURAL RESOURCES
 DO NOT REMOVE

GRAND ISLE AREA
 JEFFERSON PARISH

BLK 6

BLK 11

BLK 5

BLK 12

28'

30

Radio Towers

26

26

GRAND ISLE

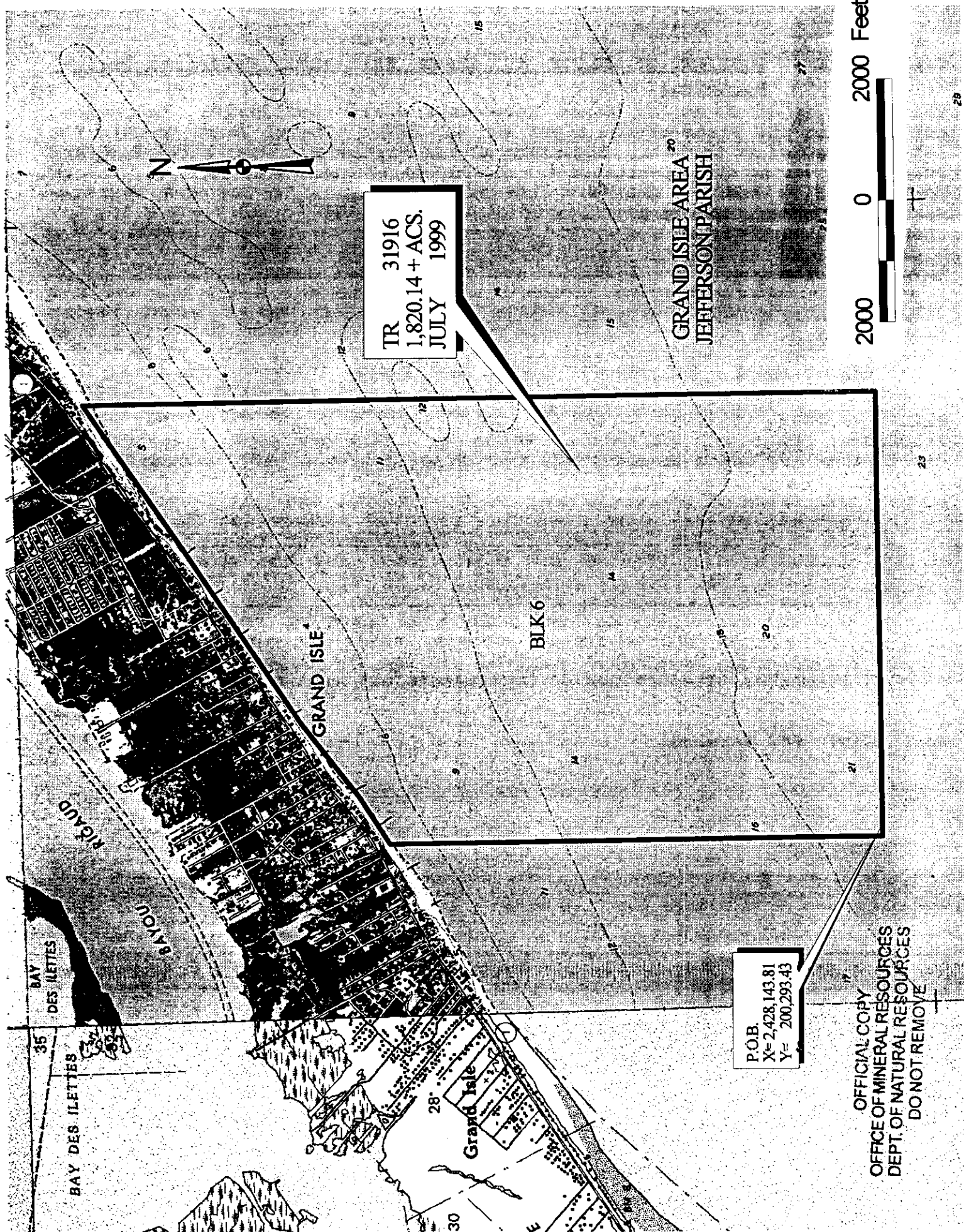
TRACT 31916 - PORTION OF BLOCK 6, GRAND ISLE AREA, Jefferson Parish, Louisiana

That portion of Block 6, Grand Isle Area, Jefferson Parish, Louisiana, belonging to the State of Louisiana and not under mineral lease on July 14, 1999, described as follows: Beginning at the Southwest corner Block 6, Grand Isle Area, having Coordinates of X = 2,428,143.81 and Y = 200,293.43; thence North 8,208.79 feet on the West line of said Block 6 to its most Westerly Northwest corner, having Coordinates of X = 2,428,143.81 and Y = 208,502.22; thence Northeasterly on a straight line to a point having Coordinates of X = 2,428,924 and Y = 208,999; thence Northeasterly on a straight line to a point having Coordinates of X = 2,430,176 and Y = 209,966; thence Northeasterly on a straight line to a point having Coordinates of X = 2,433,051 and Y = 211,862; thence Northeasterly on a straight line to a point having Coordinates of X = 2,435,522.83 and Y = 213,522.85; thence South 13,229.42 feet to a point on the South line of said Block 6, having Coordinates of X = 2,435,522.83 and Y = 200,293.43; thence West 7,379.02 feet on the South line of said Block 6 to the point of beginning, containing approximately, 1,820.14 acres, as shown outlined in red on a plat on file in the Office of Mineral Resources, Department of Natural Resources. All bearings, distances and coordinates are based on Louisiana Coordinate System of 1927 (South Zone).

NOTE: The State of Louisiana does hereby reserve, and this lease shall be subject to, the imprescriptible right of surface use in the nature of a servitude in favor of the Department of Natural Resources, including its Offices and Commissions, for the sole purpose of implementing, constructing, servicing and maintaining approved coastal zone management and/or restoration projects. Utilization of any and all rights derived under this lease by the mineral lessee, its agents, successors or assigns, shall not interfere with nor hinder the reasonable surface use by the Department of Natural Resources, its Offices or Commissions, as hereinabove reserved.

Applicant: EKG Services

Bidder	Cash Payment	Price/Acre	Rental	Oil	Gas	Other



TR 31916
1,820.14 + ACS.
JULY 1999

P.O.B.
X= 2,428,143.81
Y= 200,293.43

GRAND ISLE AREA
JEFFERSON PARISH

2000 0 2000 Feet

OFFICIAL COPY
OFFICE OF MINERAL RESOURCES
DEPT. OF NATURAL RESOURCES
DO NOT REMOVE

TRACT 31917 - PORTION OF BLOCK 6, GRAND ISLE AREA, Jefferson Parish, Louisiana

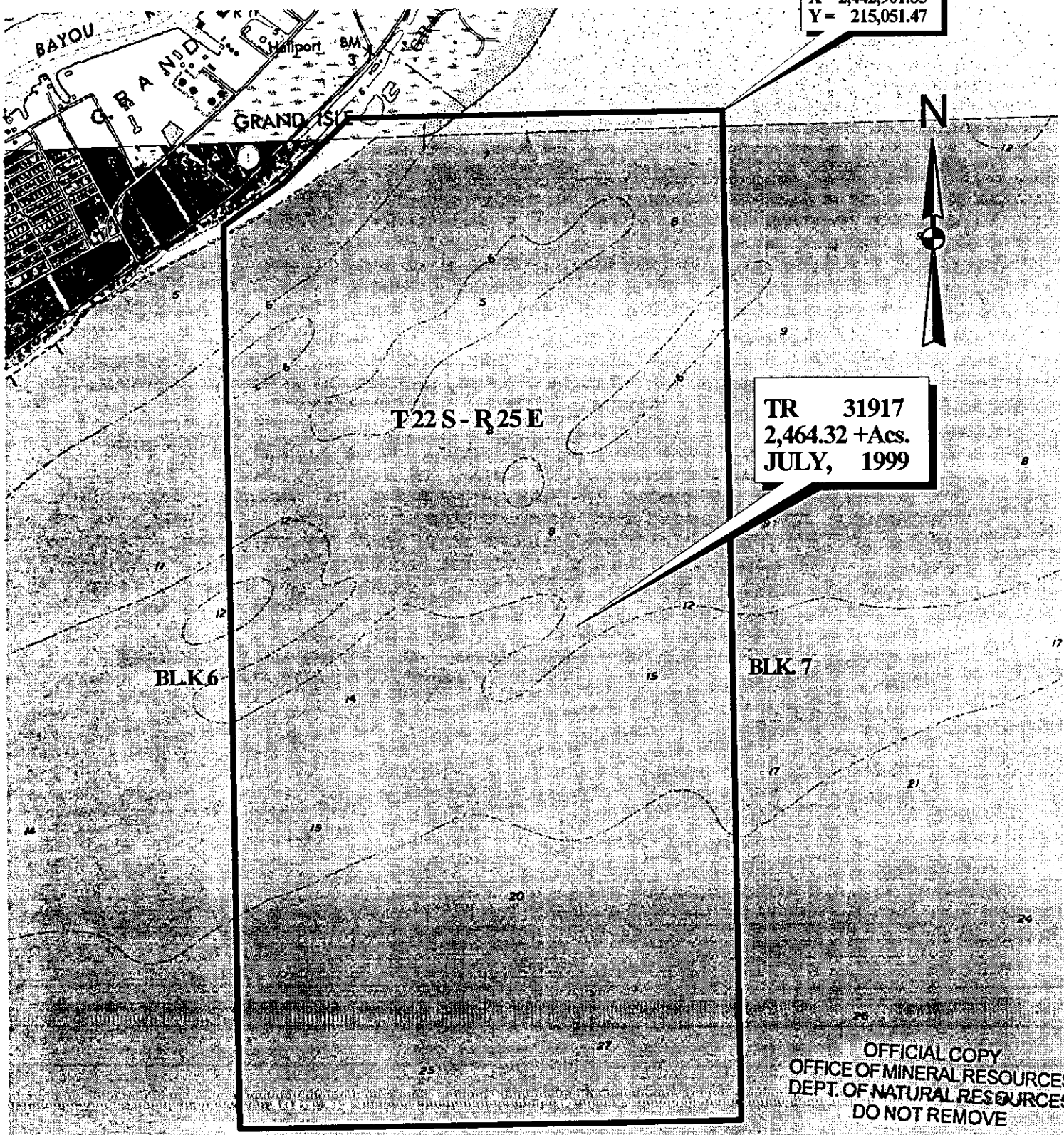
That portion of Block 6, Grand Isle Area, Jefferson Parish, Louisiana, belonging to the State of Louisiana and not under mineral lease on July 14, 1999, described as follows: Beginning at the Northeast corner of Block 6, Grand Isle Area, having Coordinates of X = 2,442,901.85 and Y = 215,051.47; thence South 14,758.04 feet on the East line of said Block 6 to its Southeast corner, having Coordinates of X = 2,442,901.85 and Y = 200,293.43; thence West 7,379.02 feet on the South line of said Block 6 to a point having Coordinates of X = 2,435,522.83 and Y = 200,293.43; thence North 13,229.42 feet to a point having Coordinates of X = 2,435,522.83 and Y = 213,522.85; thence Northeasterly on a straight line to a point having Coordinates of X = 2,436,419 and Y = 214,125; thence Northeasterly on a straight line to a point on the North line of said Block 6 having Coordinates of X = 2,437,398.76 and Y = 215,051.47; thence East 5,503.09 feet on the North line of said Block 6 to the point of beginning, containing approximately 2,464.32 acres, as shown outlined in red on a plat on file in the Office of Mineral Resources, Department of Natural Resources. All bearings, distances and coordinates are based on Louisiana Coordinate System of 1927 (South Zone).

NOTE: The State of Louisiana does hereby reserve, and this lease shall be subject to, the imprescriptible right of surface use in the nature of a servitude in favor of the Department of Natural Resources, including its Offices and Commissions, for the sole purpose of implementing, constructing, servicing and maintaining approved coastal zone management and/or restoration projects. Utilization of any and all rights derived under this lease by the mineral lessee, its agents, successors or assigns, shall not interfere with nor hinder the reasonable surface use by the Department of Natural Resources, its Offices or Commissions, as hereinabove reserved.

Applicant: EKG Services

Bidder	Cash Payment	Price/Acre	Rental	Oil	Gas	Other

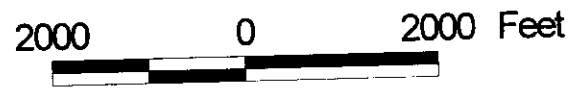
P.O.B
X= 2,442,901.85
Y= 215,051.47



TR 31917
2,464.32 +Acs.
JULY, 1999

OFFICIAL COPY
OFFICE OF MINERAL RESOURCES
DEPT. OF NATURAL RESOURCES
DO NOT REMOVE

GRAND ISLE AREA
JEFFERSON PARISH



TRACT 31918 - PORTION OF BLOCK 12, GRAND ISLE AREA, Jefferson Parish, Louisiana

That portion of Block 12, Grand Isle Area, Jefferson Parish, Louisiana, belonging to the State of Louisiana and not under mineral lease on July 14, 1999, described as follows: Beginning at the Northeast corner of Block 12, Grand Isle Area, having Coordinates of X = 2,428,143.81 and Y = 200,293.43; thence South 6,375.41 feet on the East line of said Block 12 to a point having Coordinates of X = 2,428,143.81 and Y = 193,918.02; thence West 7,000.00 feet to a point having Coordinates of X = 2,421,143.81 and Y = 193,918.02; thence North 6,375.41 feet to a point on the North line of said Block 12 having Coordinates of X = 2,421,143.81 and Y = 200,293.43; thence East 7,000.00 feet on the North line of said Block 12 to the point of beginning, containing approximately 1,024.51 acres, as shown outlined in red on a plat on file in the Office of Mineral Resources, Department of Natural Resources. All bearings, distances and coordinates are based on Louisiana Coordinate System of 1927 (South Zone).

NOTE: The State of Louisiana does hereby reserve, and this lease shall be subject to, the imprescriptible right of surface use in the nature of a servitude in favor of the Department of Natural Resources, including its Offices and Commissions, for the sole purpose of implementing, constructing, servicing and maintaining approved coastal zone management and/or restoration projects. Utilization of any and all rights derived under this lease by the mineral lessee, its agents, successors or assigns, shall not interfere with nor hinder the reasonable surface use by the Department of Natural Resources, its Offices or Commissions, as hereinabove reserved.

Applicant: EKG Services

Bidder	Cash Payment	Price/Acre	Rental	Oil	Gas	Other



P.O.B.
X = 2,428,143.81
Y = 200,293.43

BLK 5

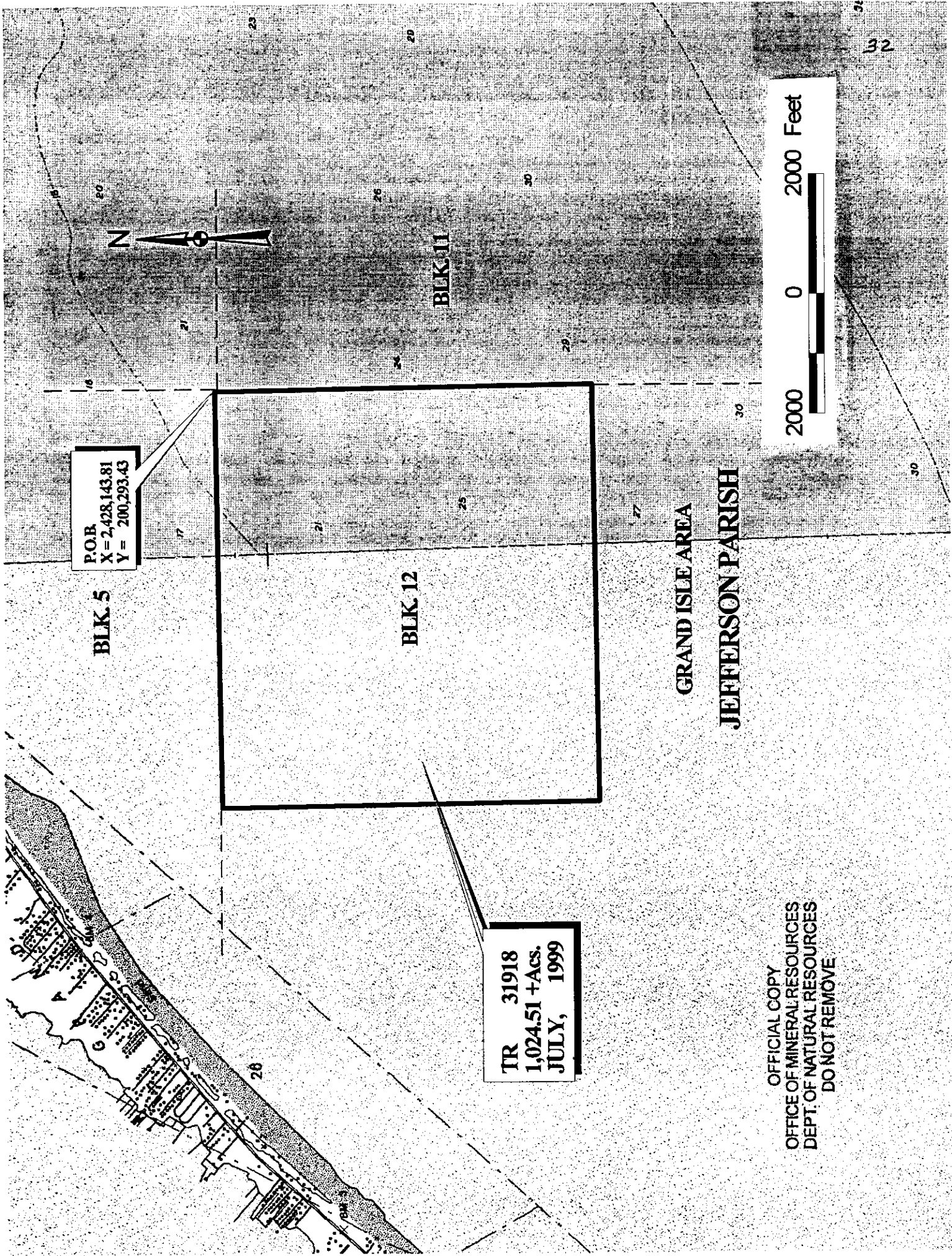
BLK 12

BLK 11

GRAND ISLE AREA
JEFFERSON PARISH

TR 31918
1,024.51 +ACS.
JULY, 1999

OFFICIAL COPY
OFFICE OF MINERAL RESOURCES
DEPT. OF NATURAL RESOURCES
DO NOT REMOVE



TRACT 31919 - PORTION OF BLOCK 11, GRAND ISLE AREA, Jefferson Parish, Louisiana

That portion of Block 11, Grand Isle Area, Jefferson Parish, Louisiana, belonging to the State of Louisiana and not under mineral lease on July 14, 1999, described as follows: Beginning at the Northwest corner of Block 11, Grand Isle Area, having Coordinates of X = 2,428,143.81 and Y = 200,293.43; thence East 14,758.04 feet on the North line of said Block 11 to its Northeast corner having Coordinates of X = 2,442,901.85 and Y = 200,293.43; thence South 6,375.41 feet on the East line of said Block 11 to a point having Coordinates of X = 2,442,901.85 and Y = 193,918.02; thence West 3,689.51 feet to a point having Coordinates of X = 2,439,212.34 and Y = 193,918.02; thence West 11,068.53 feet to a point on the West line of said Block 11 having Coordinates of X = 2,428,143.81 and Y = 193,918.02; thence North 6,375.41 feet on the West line of said Block 11 to the point of beginning, containing approximately 2,159.98 acres, as shown outlined in red on a plat on file in the Office of Mineral Resources, Department of Natural Resources. All bearings, distances and coordinates are based on Louisiana Coordinate System of 1927 (South Zone).

NOTE: The State of Louisiana does hereby reserve, and this lease shall be subject to, the imprescriptible right of surface use in the nature of a servitude in favor of the Department of Natural Resources, including its Offices and Commissions, for the sole purpose of implementing, constructing, servicing and maintaining approved coastal zone management and/or restoration projects. Utilization of any and all rights derived under this lease by the mineral lessee, its agents, successors or assigns, shall not interfere with nor hinder the reasonable surface use by the Department of Natural Resources, its Offices or Commissions, as hereinabove reserved.

Applicant: EKG Services

Bidder	Cash Payment	Price/Acre	Rental	Oil	Gas	Other

P.O.B.
X = 2,428,143.81
Y = 200,293.43

TR 31919
2,159.98 +ACS.
JULY, 1999



OFFICIAL COPY
OFFICE OF MINERAL RESOURCES
DEPT. OF NATURAL RESOURCES
DO NOT REMOVE

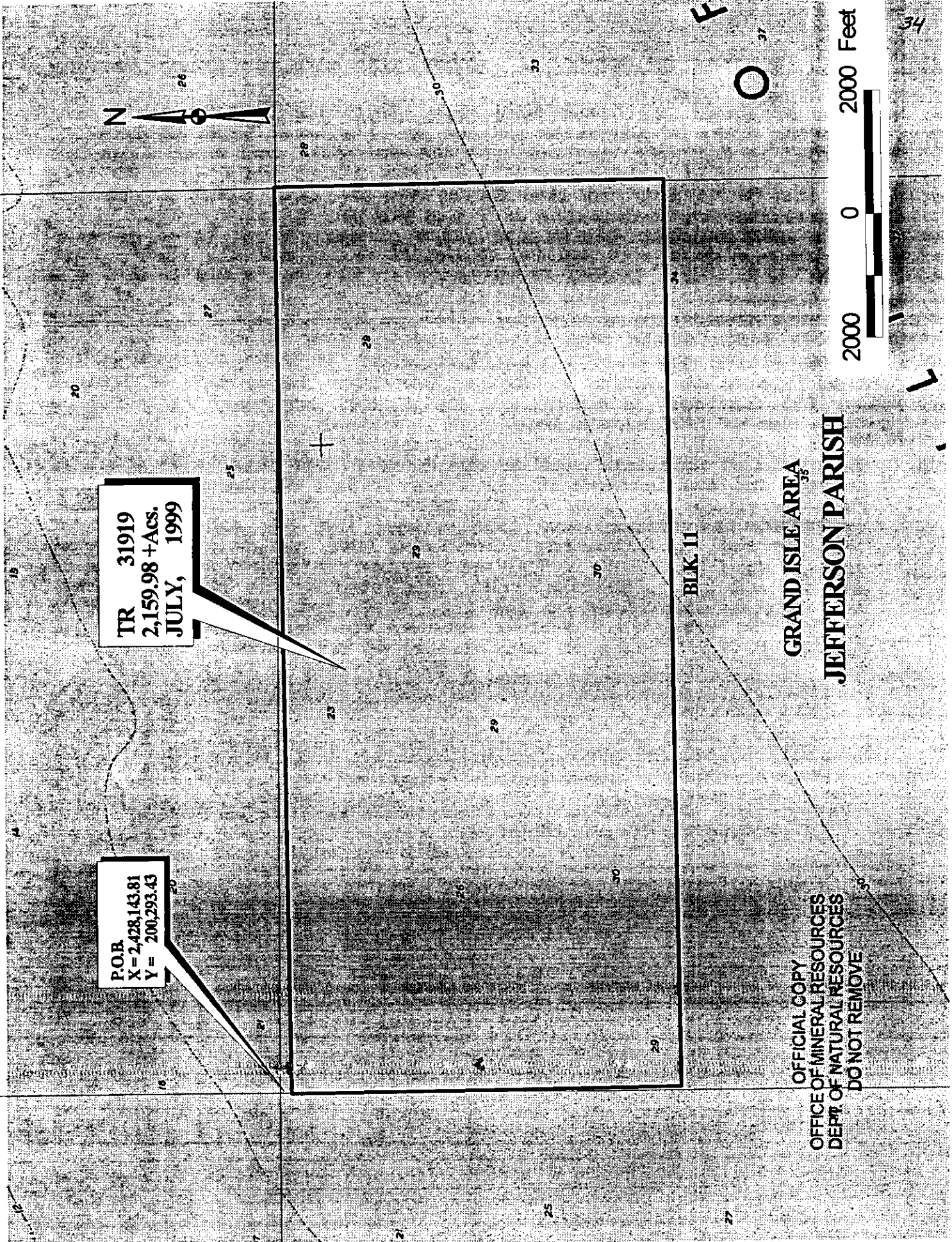
BLK. 11

GRAND ISLE AREA
JEFFERSON PARISH

2000 0 2000 Feet



34



TRACT 31920 - PORTION OF BLOCK 12, GRAND ISLE AREA, Jefferson Parish, Louisiana

That portion of Block 12, Grand Isle Area, Jefferson Parish, Louisiana, belonging to the State of Louisiana and not under mineral lease on July 14, 1999, described as follows: Beginning at a point on the East line of Block 12, Grand Isle Area, being the Northeast corner of State Lease No. 14031 having Coordinates of X = 2,428,143.81 and Y = 189,518.02; thence West 7,000.00 feet on the North line of said State Lease No. 14031 to its Northwest corner; thence North 4,400.00 feet to a point having Coordinates of X = 2,421,143.81 and Y = 193,918.02; thence East 7,000.00 feet to a point on the East line of said Block 12; thence South 4,400.00 feet on the East line of said Block 12 to the point of beginning, containing approximately **707.07 acres**, as shown outlined in red on a plat on file in the Office of Mineral Resources, Department of Natural Resources. All bearings, distances and coordinates are based on Louisiana Coordinate System of 1927 (South Zone).

NOTE: The State of Louisiana does hereby reserve, and this lease shall be subject to, the imprescriptible right of surface use in the nature of a servitude in favor of the Department of Natural Resources, including its Offices and Commissions, for the sole purpose of implementing, constructing, servicing and maintaining approved coastal zone management and/or restoration projects. Utilization of any and all rights derived under this lease by the mineral lessee, its agents, successors or assigns, shall not interfere with nor hinder the reasonable surface use by the Department of Natural Resources, its Offices or Commissions, as hereinabove reserved.

Applicant: EKG Services

Bidder	Cash Payment	Price/Acre	Rental	Oil	Gas	Other

TR 31920
707.07 +Acs.
JULY, 1999

BLK 12

BLK 11

S.L. 14031

OFFICIAL COPY
OFFICE OF MINERAL RESOURCES
DEPT. OF NATURAL RESOURCES
DO NOT REMOVE

GRAND ISLE AREA
JEFFERSON PARISH

P.O.B.
X = 2,428,143.81
Y = 189,518.02



2000 0 2000 Feet



Platform

C

1

+

36

38

35

29

24

30

28

30

30

35

35

TRACT 31921 - PORTION OF BLOCK 11, GRAND ISLE AREA, Jefferson Parish, Louisiana

That portion of Block 11, Grand Isle Area, Jefferson Parish, Louisiana, belonging to the State of Louisiana and not under mineral lease on July 14, 1999, described as follows: Beginning at a point on the West line of Block 11, Grand Isle Area, having Coordinates of X = 2,428,143.81 and Y = 192,535.39, also being the Northwest corner of State Lease No. 14602; thence North 1,382.63 feet on the West line of said Block 11 to a point having Coordinates of X = 2,428,143.81 and Y = 193,918.02; thence East 11,068.53 feet; thence South 8,382.63 feet to a point on the South line of said Block 11 having Coordinates of X = 2,439,212.34 and Y = 185,535.39; thence West 6,668.53 feet on the South line of said Block 11 to the Southeast corner of said State Lease No. 14602 having Coordinates of X = 2,432,543.81 and Y = 185,535.39; thence North 7,000.00 feet on the East line of said State Lease No. 14602 to its Northeast corner; thence West 4,400.00 feet on the North line of said State Lease No. 14602 to the point of beginning, containing approximately 1,422.94 acres, as shown outlined in red on a plat on file in the Office of Mineral Resources, Department of Natural Resources. All bearings, distances and coordinates are based on Louisiana Coordinate System of 1927 (South Zone).

NOTE: The State of Louisiana does hereby reserve, and this lease shall be subject to, the imprescriptible right of surface use in the nature of a servitude in favor of the Department of Natural Resources, including its Offices and Commissions, for the sole purpose of implementing, constructing, servicing and maintaining approved coastal zone management and/or restoration projects. Utilization of any and all rights derived under this lease by the mineral lessee, its agents, successors or assigns, shall not interfere with nor hinder the reasonable surface use by the Department of Natural Resources, its Offices or Commissions, as hereinabove reserved.

Applicant: EKG Services

Bidder	Cash Payment	Price/Acre	Rental	Oil	Gas	Other



TR 31921
1,422.94 +ACS.
JULY, 1999

P.O.B.
X = 2,428,143.81
Y = 192,535.39

S.L. 14602

BLK. 12

BLK. 11

U
G
L
F

30

30

30

35

35

36

35

36

BLK 16

GRAND ISLE AREA

OF JEFFERSON PARISH

BLK 17

OFFICIAL COPY
OFFICE OF MINERAL RESOURCES
DEPT. OF NATURAL RESOURCES
DO NOT REMOVE

2000 0 2000 Feet



TRACT 31922 - PORTION OF BLOCK 11, GRAND ISLE AREA, Jefferson Parish, Louisiana

That portion of Block 11, Grand Isle Area, Jefferson Parish, Louisiana, belonging to the State of Louisiana and not under mineral lease on July 14, 1999, described as follows: Beginning at a point on the East line of Block 11, Grand Isle Area, having Coordinates of X = 2,442,901.85 and Y = 193,918.02; thence South 8,382.63 feet to the Southeast corner of said Block 11 having Coordinates of X = 2,442,901.85 and Y = 185,535.39; thence West 3,689.51 feet on the South line of said Block 11 to a point having Coordinates of X = 2,439,212.34 and Y = 185,535.39; thence North 8,382.63 feet to a point having Coordinates of X = 2,439,212.84 and Y = 193,918.02; thence East 3,689.51 feet to the point of beginning, containing approximately **710.00 acres**, as shown outlined in red on a plat on file in the Office of Mineral Resources, Department of Natural Resources. All bearings, distances and coordinates are based on Louisiana Coordinate System of 1927 (South Zone).

NOTE: The State of Louisiana does hereby reserve, and this lease shall be subject to, the imprescriptible right of surface use in the nature of a servitude in favor of the Department of Natural Resources, including its Offices and Commissions, for the sole purpose of implementing, constructing, servicing and maintaining approved coastal zone management and/or restoration projects. Utilization of any and all rights derived under this lease by the mineral lessee, its agents, successors or assigns, shall not interfere with nor hinder the reasonable surface use by the Department of Natural Resources, its Offices or Commissions, as hereinabove reserved.

Applicant: EKG Services

Bidder	Cash Payment	Price/Acre	Rental	Oil	Gas	Other



P.O.B.
 X= 2,442,901.85
 Y= 193,918.02

S.L. 15499 F

O

BLK 10

BLK 18

TR 31922
 710.00 + ACS.
 JULY 1999

F

L

U

G

BLK 11

BLK 17

OFFICIAL COPY
 OFFICE OF MINERAL RESOURCES
 DEPT. OF NATURAL RESOURCES
 DO NOT REMOVE

2000 0 2000 Feet