

TRACT 44558 - Acadia and Jefferson Davis Parishes, Louisiana

All of the lands now or formerly constituting the beds and bottoms of all water bodies of every nature and description as to which title is vested in the State of Louisiana, together with all islands arising therein and other lands formed by accretion or by reliction, where allowed by law, excepting tax adjudicated lands, and not presently under mineral lease on June 8, 2016, situated in Acadia and Jefferson Davis Parishes, Louisiana, and more particularly described as follows: Beginning at a point having Coordinates X = 1,597,600.00 and Y = 642,730.00; thence East 6,000.00 feet to a point having Coordinates X = 1,603,600.00 and Y = 642,730.00; thence South 8,000.00 feet to a point have Coordinates X = 1,603,600.00 and Y = 634,730.00; thence West 6,000.00 feet to a point having Coordinates X = 1,597,600.00 and Y = 634,730.00; thence North 8,000.00 to the Point of Beginning, containing approximately **22 acres**, all as more particularly outlined on a plat on file in the Office of Mineral Resources, Department of Natural Resources. All bearings, distances and coordinates are based on Louisiana Coordinate System of 1927, (North or South Zone), where applicable.

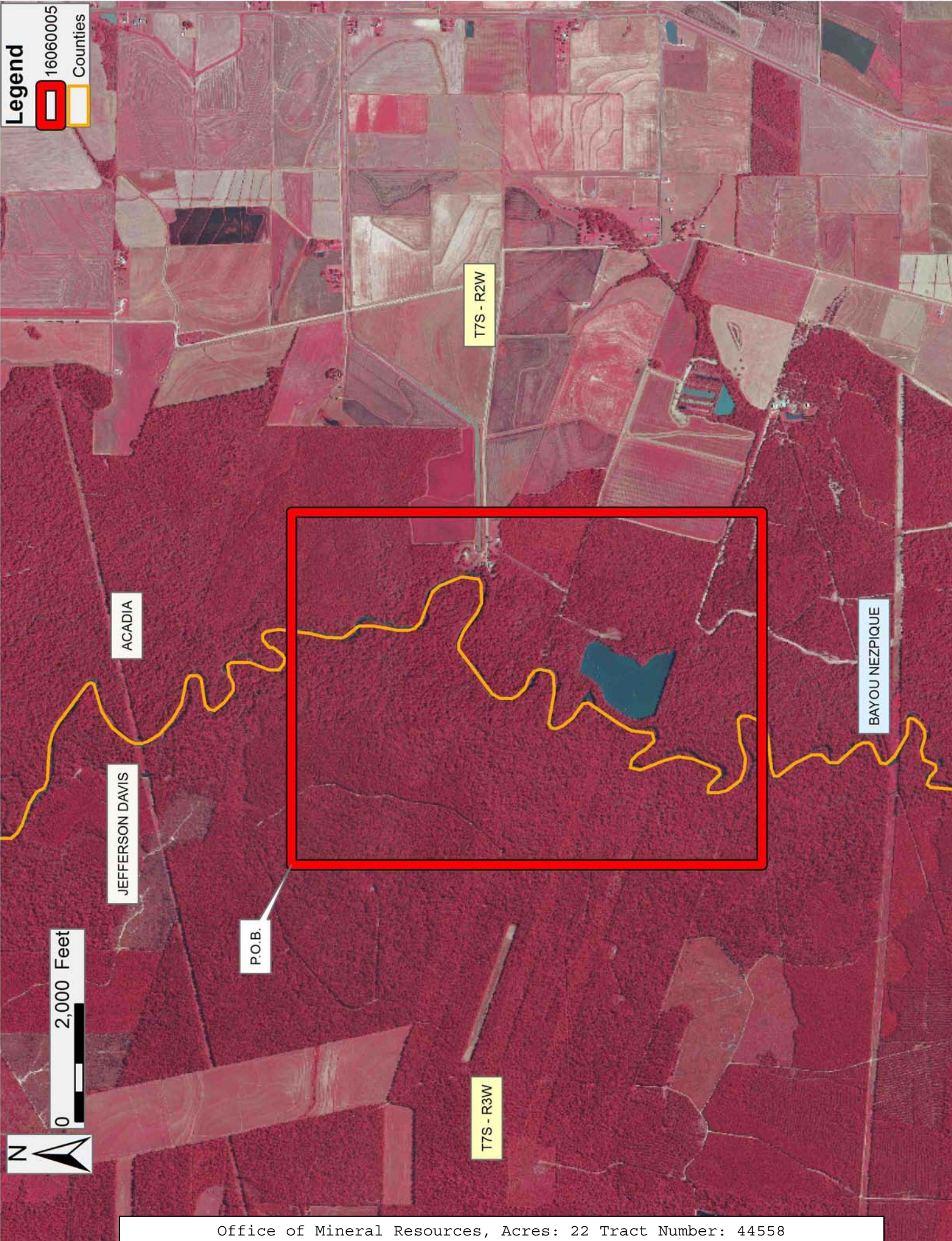
NOTE: The above description of the Tract nominated for the purpose of acquiring a mineral lease or a geophysical agreement has been provided and corrected, where required, exclusively by the nominating party. Any mineral lease or geophysical agreement selected from this Tract and awarded by the Louisiana State Mineral and Energy Board shall be without warranty of any kind, either express, implied or statutory including, but not limited to, title or the implied warranties of merchantability and fitness for a particular purpose.

An error or omission in the nominating party's Tract description may require that a State mineral lease or geophysical agreement be modified, canceled or abrogated due to the existence of conflicting leases, operating agreements, private claims or other future obligations or conditions within the Tract described. In such case, however, the Louisiana State Mineral and Energy Board shall not be obligated to refund any consideration paid by the Lessee prior to such modification, cancellation or abrogation including, but not limited to, bonuses, rentals and royalties.

Applicant: PREMIENCE ENERGY, LLC

Bidder	Cash Payment	Price/Acre	Rental	Oil	Gas	Other

Legend
16060005
Counties



TRACT 44559 - St. Martin Parish, Louisiana

All of the lands now or formerly constituting the beds and bottoms of all water bodies of every nature and description as to which title is vested in the State of Louisiana, together with all islands arising therein and other lands formed by accretion or by reliction, where allowed by law, excepting tax adjudicated lands, and not presently under mineral lease on June 8, 2016, situated in St. Martin Parish, Louisiana, and more particularly described as follows: Beginning at a point having Coordinates of X = 1,900,351.35 and Y = 623,199.62; thence South 89 degrees 50 minutes 48 seconds West 3,166.08 feet to a point having Coordinates of X = 1,897,185.28 and Y = 623,191.14; thence North 18 degrees 06 minutes 48 seconds East 7,999.63 feet to a point having Coordinates of X = 1,899,672.33 and Y = 630,794.34; thence North 86 degrees 27 minutes 53 seconds East 848.68 feet to a point having Coordinates of X = 1,900,519.40 and Y = 630,846.67; thence South 01 degrees 15 minutes 32 seconds West 7,648.89 feet to the point of beginning, **LESS AND EXCEPT** any of the above described water bottoms lying inside the geographical boundaries of Sherburne Wildlife Management Area, containing approximately **1 acres**, all as more particularly outlined on a plat on file in the Office of Mineral Resources, Department of Natural Resources. All bearings, distances and coordinates are based on Louisiana Coordinate System of 1927, (North or South Zone), where applicable.

NOTE: The above description of the Tract nominated for the purpose of acquiring a mineral lease or a geophysical agreement has been provided and corrected, where required, exclusively by the nominating party. Any mineral lease or geophysical agreement selected from this Tract and awarded by the Louisiana State Mineral and Energy Board shall be without warranty of any kind, either express, implied or statutory including, but not limited to, title or the implied warranties of merchantability and fitness for a particular purpose.

An error or omission in the nominating party's Tract description may require that a State mineral lease or geophysical agreement be modified, canceled or abrogated due to the existence of conflicting leases, operating agreements, private claims or other future obligations or conditions within the Tract described. In such case, however, the Louisiana State Mineral and Energy Board shall not be obligated to refund any consideration paid by the Lessee prior to such modification, cancellation or abrogation including, but not limited to, bonuses, rentals and royalties.

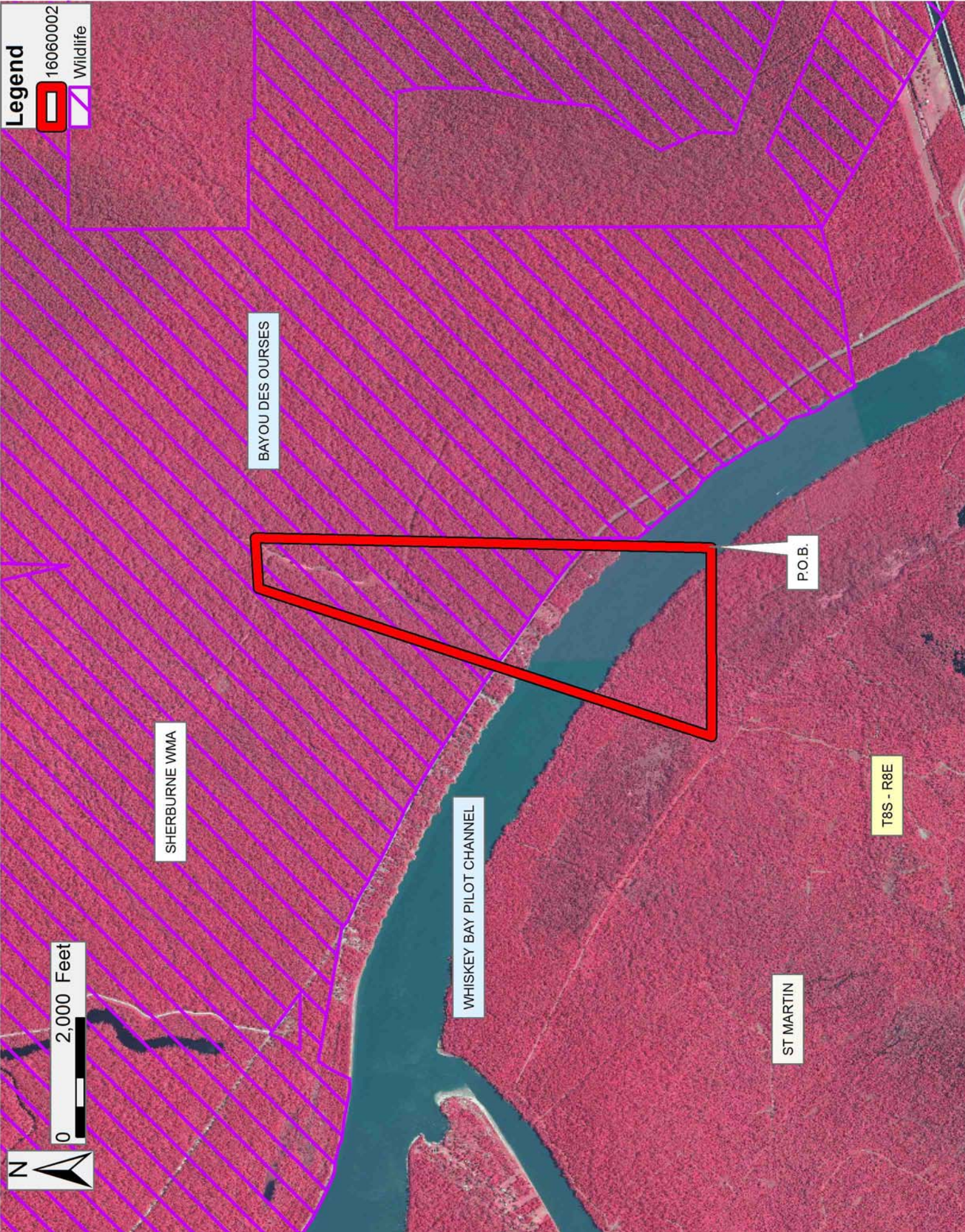
NOTE: This acreage is entirely within the boundary of the Atchafalaya Basin Legal Area.

Applicant: MAGELLAN ENERGY, LLC

Bidder	Cash Payment	Price/Acre	Rental	Oil	Gas	Other

Legend

16060002
Wildlife



TRACT 44560 - Portion of Block 28, North Lake Borgne Area, St. Bernard Parish, Louisiana

All of the lands now or formerly constituting the beds and bottoms of all water bodies of every nature and description as to which title is vested in the State of Louisiana, together with all islands arising therein and other lands formed by accretion or by reliction, where allowed by law, excepting tax adjudicated lands, and not presently under mineral lease on June 8, 2016, situated in St. Bernard Parish, Louisiana, and more particularly described as follows: Beginning at a point having Coordinates of X = 2,536,250.00 and Y = 529,959.00, said point being the Northeast corner of Block 28, North Lake Borgne Area; thence South 9,000.00 feet along the East Line of said Block 28, North Lake Borgne Area, to a point having Coordinates of X = 2,536,250.00 and Y = 520,959.00, said point being the Southeast corner of said Block 28, North Lake Borgne Area; thence West 11,500.00 feet along the South Line of said Block 28, North Lake Borgne Area, to a point having Coordinates of X = 2,524,750.00 and Y = 520,959.00; thence North 18 degrees 16 minutes 28 seconds East 9,478.02 feet to a point having Coordinates of X = 2,527,722.01 and Y = 529,959.00, said point being on the North Line of said Block 28, North Lake Borgne Area; thence East 8,527.99 feet along said North Line of said Block 28, North Lake Borgne Area, to the point of beginning, containing approximately **2,069.01 acres**, all as more particularly outlined on a plat on file in the Office of Mineral Resources, Department of Natural Resources. All bearings, distances and coordinates are based on Louisiana Coordinate System of 1927, (North or South Zone), where applicable.

NOTE: The above description of the Tract nominated for the purpose of acquiring a mineral lease or a geophysical agreement has been provided and corrected, where required, exclusively by the nominating party. Any mineral lease or geophysical agreement selected from this Tract and awarded by the Louisiana State Mineral and Energy Board shall be without warranty of any kind, either express, implied or statutory including, but not limited to, title or the implied warranties of merchantability and fitness for a particular purpose.

An error or omission in the nominating party's Tract description may require that a State mineral lease or geophysical agreement be modified, canceled or abrogated due to the existence of conflicting leases, operating agreements, private claims or other future obligations or conditions within the Tract described. In such case, however, the Louisiana State Mineral and Energy Board shall not be obligated to refund any consideration paid by the Lessee prior to such modification, cancellation or abrogation including, but not limited to, bonuses, rentals and royalties.

NOTE: The State of Louisiana does hereby reserve, and this lease shall be subject to, the imprescriptible right of surface use in the nature of a servitude in favor of the Department of Natural Resources, including its Offices and Commissions, for the sole purpose of implementing,

constructing, servicing and maintaining approved coastal zone management and/or restoration projects. Utilization of any and all rights derived under this lease by the mineral lessee, its agents, successors or assigns, shall not interfere with nor hinder the reasonable surface use by the Department of Natural Resources, its Offices or Commissions, as herein above reserved.

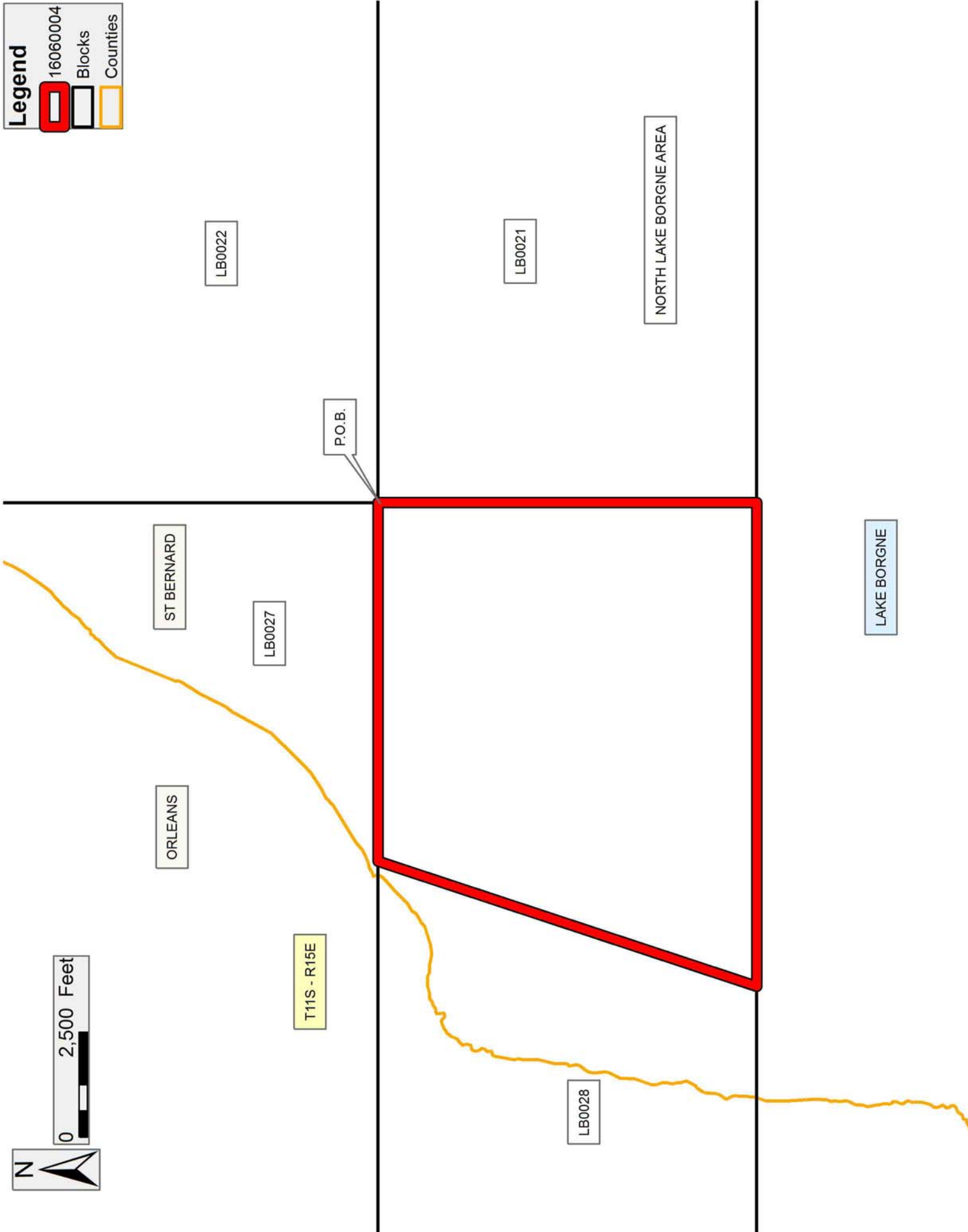
NOTE: This tract is located in an area designated by the Louisiana Legislature or the Wildlife and Fisheries Commission as a Public Oyster Seed Ground, Reservation, or area of Calcasieu or Sabine Lake. Proposed projects occurring in these areas will be evaluated on a case by case basis by Louisiana Department of Wildlife & Fisheries. Modifications to proposed project features including, but not limited to, access routes, well sites, flowlines, and appurtenant structures maybe required by the Louisiana Department of Wildlife and Fisheries. In addition, compensatory mitigation will be required to offset unavoidable habitat impacts.

Applicant: ROBERT A. SCHROEDER, INC.

Bidder	Cash Payment	Price/Acre	Rental	Oil	Gas	Other

Legend

- 16060004
- Blocks
- Counties



TRACT 44561 - Cameron Parish, Louisiana

All of the lands now or formerly constituting the beds and bottoms of all water bodies of every nature and description as to which title is vested in the State of Louisiana, together with all islands arising therein and other lands formed by accretion or by reliction, where allowed by law, excepting tax adjudicated lands, and not presently under mineral lease on June 8, 2016, situated in Cameron Parish, Louisiana, and more particularly described as follows: Beginning at the most Northerly Northwest corner of State Lease No. 21279, having Coordinates of X = 1,230,512.21 and Y = 483,278.00; thence along the boundary of said State Lease No. 21279 the following courses and distances: South 34 degrees 17 minutes 13 seconds West 2,662.71 feet to a point having Coordinates of X = 1,229,012.21 and Y = 481,078.00 and South 2,000.00 feet to the Northwest corner of State Lease No. 21422 having Coordinates of X = 1,229,012.21 and Y = 479,078.00; thence along boundary of said State Lease No. 21422 the following courses and distances: South 3,228.00 feet to its Southwest corner, having Coordinates of X = 1,229,012.21 and Y = 475,850.00 and East 1,500.00 feet to its Southeast corner, also being the Southwest corner of said State Lease No. 21279, having Coordinates of X = 1,230,512.21 and Y = 475,850.00; thence East 3,000.00 feet along the Southern boundary of said State Lease No. 21279 to its Southeast corner, having Coordinates of X = 1,233,512.21 and Y = 475,850.00; thence South 7,193.20 feet to a point having Coordinates of X = 1,233,512.21 and Y = 468,656.80; thence West 6,500.00 feet to a point having Coordinates of X = 1,227,012.21 and Y = 468,656.80; thence North 14,621.20 feet to a point having Coordinates of X = 1,227,012.21 and Y = 483,278.00; thence East 3,500.00 feet to the point of beginning, containing approximately **1,130 acres**, all as more particularly outlined on a plat on file in the Office of Mineral Resources, Department of Natural Resources. All bearings, distances and coordinates are based on Louisiana Coordinate System of 1927, (North or South Zone), where applicable.

NOTE: The above description of the Tract nominated for the purpose of acquiring a mineral lease or a geophysical agreement has been provided and corrected, where required, exclusively by the nominating party. Any mineral lease or geophysical agreement selected from this Tract and awarded by the Louisiana State Mineral and Energy Board shall be without warranty of any kind, either express, implied or statutory including, but not limited to, title or the implied warranties of merchantability and fitness for a particular purpose.

An error or omission in the nominating party's Tract description may require that a State mineral lease or geophysical agreement be modified, canceled or abrogated due to the existence of conflicting leases, operating agreements, private claims or other future obligations or conditions within the Tract described. In such case, however, the Louisiana State Mineral and Energy Board shall not be obligated to refund any consideration paid by the Lessee prior to such modification,

cancellation or abrogation including, but not limited to, bonuses, rentals and royalties.

NOTE: The State of Louisiana does hereby reserve, and this lease shall be subject to, the imprescriptible right of surface use in the nature of a servitude in favor of the Department of Natural Resources, including its Offices and Commissions, for the sole purpose of implementing, constructing, servicing and maintaining approved coastal zone management and/or restoration projects. Utilization of any and all rights derived under this lease by the mineral lessee, its agents, successors or assigns, shall not interfere with nor hinder the reasonable surface use by the Department of Natural Resources, its Offices or Commissions, as herein above reserved.

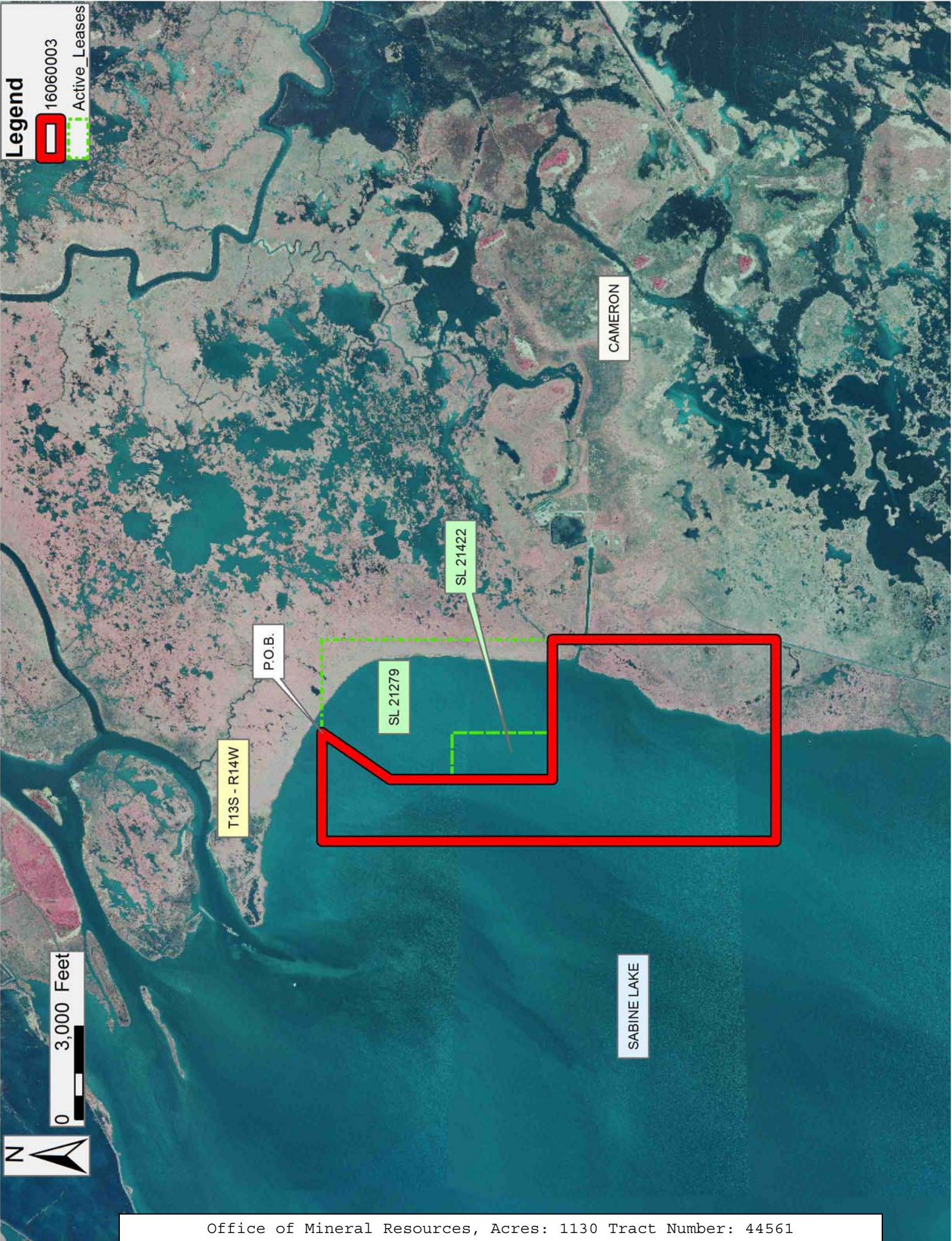
NOTE: This tract is located in an area designated by the Louisiana Legislature or the Wildlife and Fisheries Commission as a Public Oyster Seed Ground, Reservation, or area of Calcasieu or Sabine Lake. Proposed projects occurring in these areas will be evaluated on a case by case basis by Louisiana Department of Wildlife & Fisheries. Modifications to proposed project features including, but not limited to, access routes, well sites, flowlines, and appurtenant structures maybe required by the Louisiana Department of Wildlife and Fisheries. In addition, compensatory mitigation will be required to offset unavoidable habitat impacts.

Applicant: THEOPHILUS OIL, GAS & LAND SERVICES, INC.

Bidder	Cash Payment	Price/Acre	Rental	Oil	Gas	Other

Legend

16060003
Active_Leases



TRACT 44562 - Cameron Parish, Louisiana

All of the lands now or formerly constituting the beds and bottoms of all water bodies of every nature and description as to which title is vested in the State of Louisiana, together with all islands arising therein and other lands formed by accretion or by reliction, where allowed by law, excepting tax adjudicated lands, and not presently under mineral lease on June 8, 2016, situated in Cameron Parish, Louisiana, and more particularly described as follows: Beginning at a point having Coordinates of X = 1,556,809.00 and Y = 463,777.00; thence East 3,660.00 feet to a point having Coordinates of X = 1,560,469.00 and Y = 463,777.00; thence South 3,219.00 feet to a point having Coordinates of X = 1,560,469.00 and Y = 460,558.00; thence West 3,660.00 feet to a point having Coordinates of X = 1,556,809.00 and Y = 460,558.00; thence North 3,219.00 feet to the point of beginning, containing approximately **270.47 acres**, all as more particularly outlined on a plat on file in the Office of Mineral Resources, Department of Natural Resources. All bearings, distances and coordinates are based on Louisiana Coordinate System of 1927, (North or South Zone), where applicable.

NOTE: The above description of the Tract nominated for the purpose of acquiring a mineral lease or a geophysical agreement has been provided and corrected, where required, exclusively by the nominating party. Any mineral lease or geophysical agreement selected from this Tract and awarded by the Louisiana State Mineral and Energy Board shall be without warranty of any kind, either express, implied or statutory including, but not limited to, title or the implied warranties of merchantability and fitness for a particular purpose.

An error or omission in the nominating party's Tract description may require that a State mineral lease or geophysical agreement be modified, canceled or abrogated due to the existence of conflicting leases, operating agreements, private claims or other future obligations or conditions within the Tract described. In such case, however, the Louisiana State Mineral and Energy Board shall not be obligated to refund any consideration paid by the Lessee prior to such modification, cancellation or abrogation including, but not limited to, bonuses, rentals and royalties.

NOTE: The State of Louisiana does hereby reserve, and this lease shall be subject to, the imprescriptible right of surface use in the nature of a servitude in favor of the Department of Natural Resources, including its Offices and Commissions, for the sole purpose of implementing, constructing, servicing and maintaining approved coastal zone management and/or restoration projects. Utilization of any and all rights derived under this lease by the mineral lessee, its agents, successors or assigns, shall not interfere with nor hinder the reasonable surface use by the Department of Natural Resources, its Offices or Commissions, as herein above reserved.

Applicant: STARKS OIL CORPORATION

Bidder	Cash Payment	Price/Acre	Rental	Oil	Gas	Other

Legend



MALLARD BAY



P.O.B.

CAMERON

GRAND LAKE



0 2,000 Feet

TRACT 44563 - Cameron Parish, Louisiana

All of the lands now or formerly constituting the beds and bottoms of all water bodies of every nature and description as to which title is vested in the State of Louisiana, together with all islands arising therein and other lands formed by accretion or by reliction, where allowed by law, excepting tax adjudicated lands, and not presently under mineral lease on June 8, 2016, situated in Cameron Parish, Louisiana, and more particularly described as follows: Beginning at a point having Coordinates of X = 1,560,469.00 and Y = 463,465.00; thence East 3,440.00 feet to a point having Coordinates of X = 1,563,909.00 and Y = 463,465.00; thence South 3,425.00 feet to a point having Coordinates of X = 1,563,909.00 and Y = 460,040.00; thence West 3,440.00 feet to a point having Coordinates of X = 1,560,469.00 and Y = 460,040.00; thence North 3,425.00 feet to the point of beginning, containing approximately **270 acres**, all as more particularly outlined on a plat on file in the Office of Mineral Resources, Department of Natural Resources. All bearings, distances and coordinates are based on Louisiana Coordinate System of 1927, (North or South Zone), where applicable.

NOTE: The above description of the Tract nominated for the purpose of acquiring a mineral lease or a geophysical agreement has been provided and corrected, where required, exclusively by the nominating party. Any mineral lease or geophysical agreement selected from this Tract and awarded by the Louisiana State Mineral and Energy Board shall be without warranty of any kind, either express, implied or statutory including, but not limited to, title or the implied warranties of merchantability and fitness for a particular purpose.

An error or omission in the nominating party's Tract description may require that a State mineral lease or geophysical agreement be modified, canceled or abrogated due to the existence of conflicting leases, operating agreements, private claims or other future obligations or conditions within the Tract described. In such case, however, the Louisiana State Mineral and Energy Board shall not be obligated to refund any consideration paid by the Lessee prior to such modification, cancellation or abrogation including, but not limited to, bonuses, rentals and royalties.

NOTE: The State of Louisiana does hereby reserve, and this lease shall be subject to, the imprescriptible right of surface use in the nature of a servitude in favor of the Department of Natural Resources, including its Offices and Commissions, for the sole purpose of implementing, constructing, servicing and maintaining approved coastal zone management and/or restoration projects. Utilization of any and all rights derived under this lease by the mineral lessee, its agents, successors or assigns, shall not interfere with nor hinder the reasonable surface use by the Department of Natural Resources, its Offices or Commissions, as herein above reserved.

Applicant: STARKS OIL CORPORATION

Bidder	Cash Payment	Price/Acre	Rental	Oil	Gas	Other

Legend



TRACT 44564 - Cameron Parish, Louisiana

All of the lands now or formerly constituting the beds and bottoms of all water bodies of every nature and description as to which title is vested in the State of Louisiana, together with all islands arising therein and other lands formed by accretion or by reliction, where allowed by law, excepting tax adjudicated lands, and not presently under mineral lease on June 8, 2016, situated in Cameron Parish, Louisiana, and more particularly described as follows: Beginning at a point having Coordinates of X = 1,563,909.00 and Y = 462,974.00; thence East 3,660.00 feet to a point having Coordinates of X = 1,567,569.00 and Y = 462,974.00; thence South 3,220.00 feet to a point having Coordinates of X = 1,567,569.00 and Y = 459,754.00; thence West 3,660.00 feet to a point having Coordinates of X = 1,563,909.00 and Y = 459,754.00; thence North 3,220.00 feet to the point of beginning, containing approximately **270.55 acres**, all as more particularly outlined on a plat on file in the Office of Mineral Resources, Department of Natural Resources. All bearings, distances and coordinates are based on Louisiana Coordinate System of 1927, (North or South Zone), where applicable.

NOTE: The above description of the Tract nominated for the purpose of acquiring a mineral lease or a geophysical agreement has been provided and corrected, where required, exclusively by the nominating party. Any mineral lease or geophysical agreement selected from this Tract and awarded by the Louisiana State Mineral and Energy Board shall be without warranty of any kind, either express, implied or statutory including, but not limited to, title or the implied warranties of merchantability and fitness for a particular purpose.

An error or omission in the nominating party's Tract description may require that a State mineral lease or geophysical agreement be modified, canceled or abrogated due to the existence of conflicting leases, operating agreements, private claims or other future obligations or conditions within the Tract described. In such case, however, the Louisiana State Mineral and Energy Board shall not be obligated to refund any consideration paid by the Lessee prior to such modification, cancellation or abrogation including, but not limited to, bonuses, rentals and royalties.

NOTE: The State of Louisiana does hereby reserve, and this lease shall be subject to, the imprescriptible right of surface use in the nature of a servitude in favor of the Department of Natural Resources, including its Offices and Commissions, for the sole purpose of implementing, constructing, servicing and maintaining approved coastal zone management and/or restoration projects. Utilization of any and all rights derived under this lease by the mineral lessee, its agents, successors or assigns, shall not interfere with nor hinder the reasonable surface use by the Department of Natural Resources, its Offices or Commissions, as herein above reserved.

Applicant: STARKS OIL CORPORATION

Bidder	Cash Payment	Price/Acre	Rental	Oil	Gas	Other

