

TRACT 44317 - Jackson Parish, Louisiana

A certain Tract of land, excluding the beds and bottoms of all navigable waters, belonging to and not presently under mineral lease from Louisiana Department Of Transportation And Development on June 10, 2015, being more fully described as follows: Beginning at a point having Coordinates of X = 1,970,553.18 and Y = 664,526.49; thence East 18,480.00 feet to a point having Coordinates of X = 1,989,033.18 and Y = 664,526.49; thence South 18,480.00 feet to a point having Coordinates of X = 1,989,033.18 and Y = 646,046.49; thence West 18,480.00 feet to a point having Coordinates of X = 1,970,553.18 and Y = 646,046.49; thence North 18,480.00 feet to the point of beginning and being more particularly described as follows: being Louisiana Highway 145 situated in Sections 2, 3 and 10, Township 17 North, Range 2 West, and Louisiana Highway 146 in Sections 4, 9, 10, 15 and 22, Township 17 North, Range 2 West, Jackson Parish, Louisiana, **LESS AND EXCEPT** any right, title, and interest in lands owned by and not under lease from the State of Louisiana, on behalf of the Jackson Parish School Board, situated in Section 16, Township 17 North, Range 2 West, Jackson Parish, Louisiana, contained within the above described tract, containing approximately **34.5 acres**, all as more particularly outlined on a plat on file in the Office of Mineral Resources, Department of Natural Resources. The description is based on information provided by the State Agency regarding location and ownership of surface and mineral rights. All bearings, distances and coordinates, if applicable, are based on Louisiana Coordinate System of 1927, (North or South Zone).

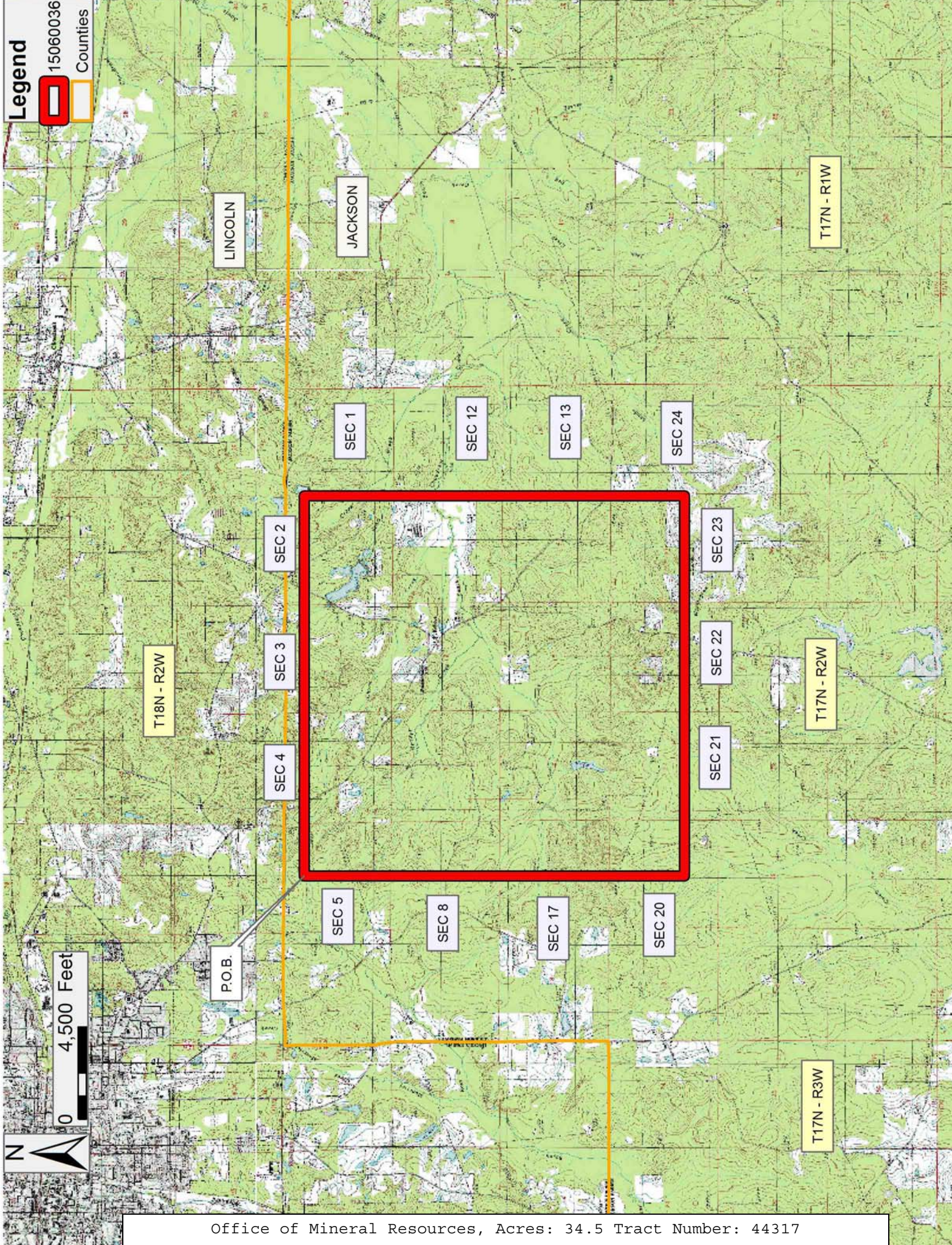
NOTE: The above description of the Tract nominated for the purpose of acquiring a mineral lease or a geophysical agreement has been provided and corrected, where required, exclusively by the nominating party. Any mineral lease or geophysical agreement selected from this Tract and awarded by the Louisiana State Mineral and Energy Board shall be without warranty of any kind, either express, implied or statutory including, but not limited to, title or the implied warranties of merchantability and fitness for a particular purpose.

An error or omission in the nominating party's Tract description may require that a State mineral lease or geophysical agreement be modified, canceled or abrogated due to the existence of conflicting leases, operating agreements, private claims or other future obligations or conditions within the Tract described. In such case, however, the Louisiana State Mineral and Energy Board shall not be obligated to refund any consideration paid by the Lessee prior to such modification, cancellation or abrogation including, but not limited to, bonuses, rentals and royalties.

NOTE: No surface operations will be performed on the property.

Applicant: MANTILLA EXPLORATION to Agency and by Resolution from the Louisiana Department Of Transportation And Development authorizing the Mineral Board to act in its behalf

Bidder	Cash Payment	Price/Acre	Rental	Oil	Gas	Other



Legend
15060036
Counties

0 4,500 Feet
N

TRACT 44318 - Jackson Parish, Louisiana

A certain Tract of land, excluding the beds and bottoms of all navigable waters, belonging to and not presently under mineral lease from Louisiana Department Of Transportation And Development on June 10, 2015, being more fully described as follows: Beginning at a point having Coordinates of X = 1,997,807.89 and Y = 660,464.32; thence East 18,480.00 feet to a point having Coordinates of X = 2,016,287.89 and Y = 660,464.32; thence South 9,240.00 feet to a point having Coordinates of X = 2,016,287.89 and Y = 651,224.32; thence West 18,480.00 feet to a point having Coordinates of X = 1,997,807.89 and Y = 651,224.32; thence North 9,240.00 feet to the point of beginning and being more particularly described as follows: being Louisiana Highway 556 situated in Sections 5, 8, 9, 10 and 11, Township 17 North, Range 1 West, Jackson Parish, Louisiana, **LESS AND EXCEPT** any right, title, and interest in lands owned by and not under lease from the State of Louisiana, on behalf of the Jackson Parish School Board, situated in Section 16, Township 17 North, Range 1 West, Jackson Parish, Louisiana, contained within the above described tract, containing approximately **17.6 acres**, all as more particularly outlined on a plat on file in the Office of Mineral Resources, Department of Natural Resources. The description is based on information provided by the State Agency regarding location and ownership of surface and mineral rights. All bearings, distances and coordinates, if applicable, are based on Louisiana Coordinate System of 1927, (North or South Zone).

NOTE: The above description of the Tract nominated for the purpose of acquiring a mineral lease or a geophysical agreement has been provided and corrected, where required, exclusively by the nominating party. Any mineral lease or geophysical agreement selected from this Tract and awarded by the Louisiana State Mineral and Energy Board shall be without warranty of any kind, either express, implied or statutory including, but not limited to, title or the implied warranties of merchantability and fitness for a particular purpose.

An error or omission in the nominating party's Tract description may require that a State mineral lease or geophysical agreement be modified, canceled or abrogated due to the existence of conflicting leases, operating agreements, private claims or other future obligations or conditions within the Tract described. In such case, however, the Louisiana State Mineral and Energy Board shall not be obligated to refund any consideration paid by the Lessee prior to such modification, cancellation or abrogation including, but not limited to, bonuses, rentals and royalties.

NOTE: No surface operations will be performed on the property.

Applicant: MANTILLA EXPLORATION to Agency and by Resolution from the Louisiana Department Of Transportation And Development authorizing the Mineral Board to act in its behalf

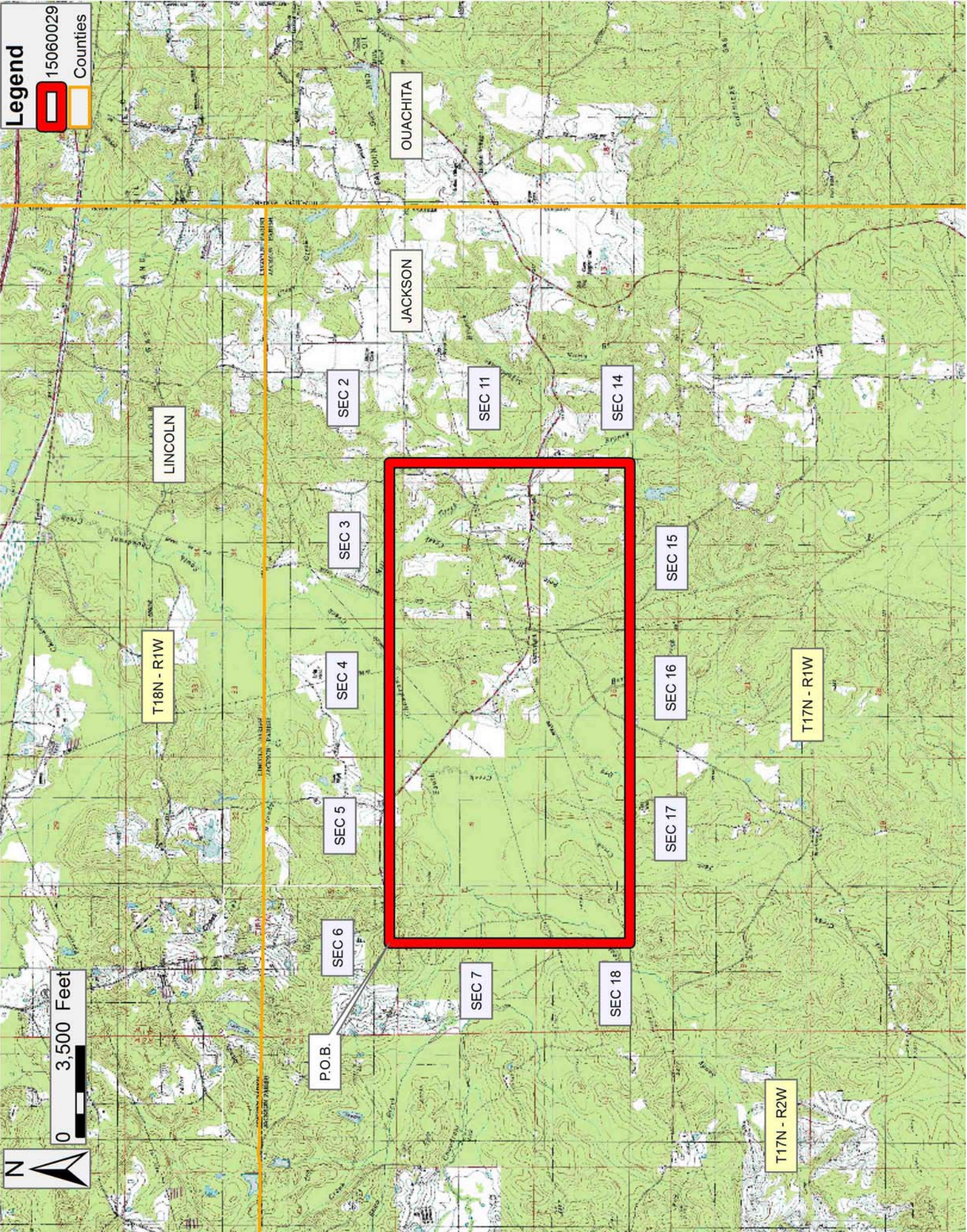
Bidder	Cash Payment	Price/Acre	Rental	Oil	Gas	Other

Legend

15060029

Counties

0 3,500 Feet



TRACT 44319 - Plaquemines Parish, Louisiana

A certain Tract of land, excluding the beds and bottoms of all navigable waters, belonging to and not presently under mineral lease from Orleans Levee District on June 10, 2015, being more fully described as follows: Tracts 130 through 154, Township 19 South Range 16 East, Plaquemines Parish, Louisiana, inclusive, as shown on five (5) certain plats, or maps, marked Sheet No. 1, Sheet No. 2, Sheet No. 3, Sheet No. 4, and Sheet No. 5, showing the property on the East bank of the Mississippi River between the lower limits of Bohemia Plantation and the upper end of the United States Military Reservation at Fort St. Phillip, and which said five (5) maps are paraphed for identification with an act before Edward C. Brodtmann, Notary Public, of July 3rd, 1925, which act is on file in the Notarial Archives of Orleans Parish. Said Tracts 130 through 154, inclusive, include without limitation, the below described Tracts which are estimated, and for purposes of calculating payments (except royalties) accruing under a lease, shall be deemed, to contain the following corresponding mineral acres net to the Orleans Levee District:

Tract No. 130 at 51 acres,
Tract No. 131 at 51 acres,
Tract No. 132 at 22 acres,
Tract No. 134 at 60 acres,
Tract No. 136 at 17 acres,
Tract No. 137 at 68 acres,
Tract No. 138 at 48 acres,
Tract No. 140 at 34 acres,
Tract No. 142 at 37 acres,
Tract No. 143 at 17 acres,
Tract No. 147 at 1 acre,
Tract No. 148 at 15 acres,
Tract No. 149 at 21 acres,
Tract No. 152 at 10 acres,
Tract No. 153 at 9 acres, and
Tract No. 154 at 2 acres,

LESS AND EXCEPT any right, title, and interest in lands owned by and not under lease from the State of Louisiana, on behalf of the Plaquemines Parish School Board, situated in Section 16, Township 19 South, Range 16 East, Plaquemines Parish, Louisiana, contained within the above described tract. The above described lands are estimated to contain in the aggregate, but are not limited to, net to the Orleans Levee District, **463 mineral acres**, all as more particularly outlined on a plat on file in the Office of Mineral Resources, Department of Natural Resources. The description is based on information provided by the State Agency regarding location and ownership of surface and mineral rights. All bearings, distances and coordinates, if applicable, are based on Louisiana Coordinate System of 1927, (North or South Zone).

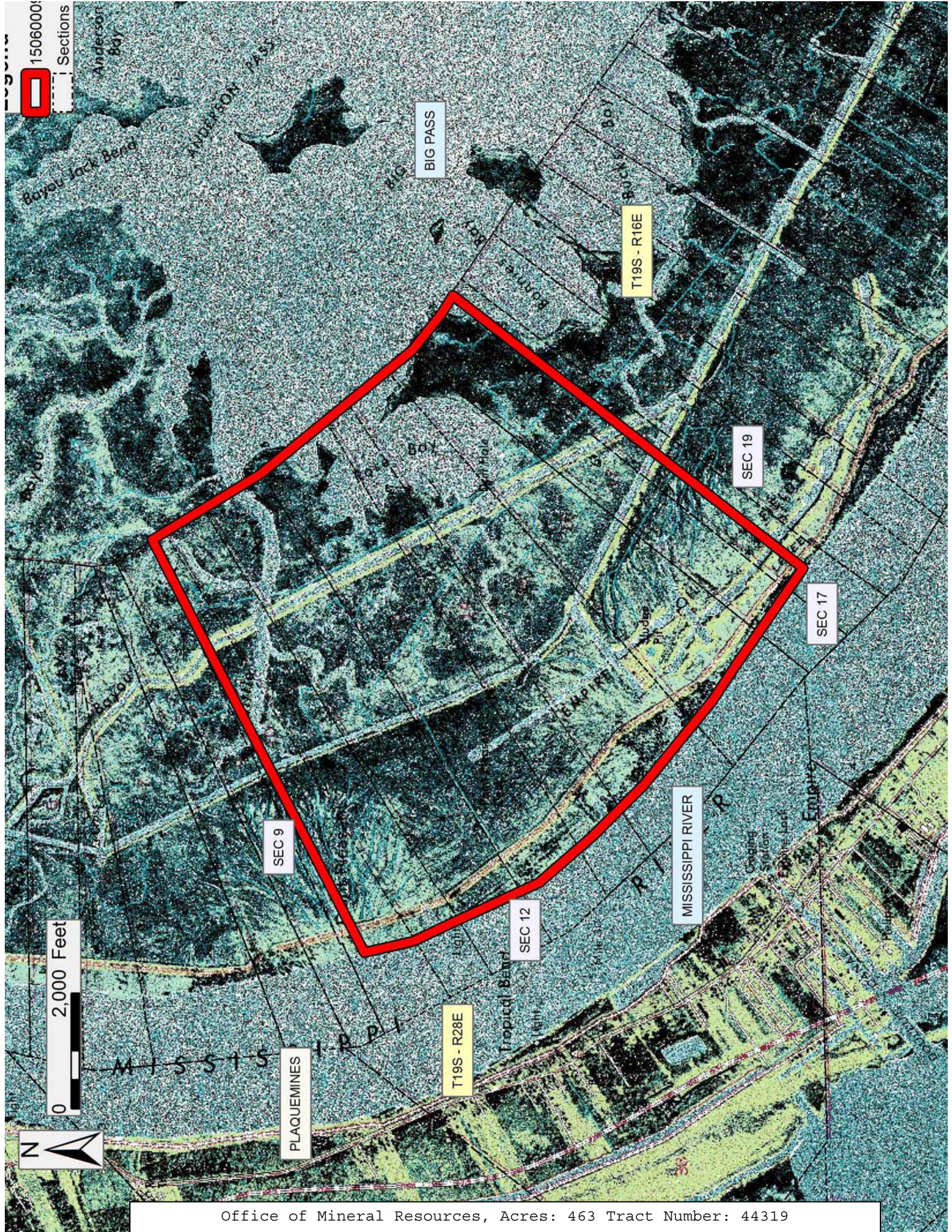
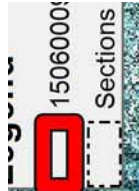
NOTE: The above description of the Tract nominated for the purpose of acquiring a mineral lease or a geophysical agreement has been provided and corrected, where required, exclusively by the nominating party. Any mineral lease or geophysical agreement selected from this Tract and awarded by the Louisiana State Mineral and Energy Board shall be without warranty of any kind, either express, implied or statutory including, but not limited to, title or the implied warranties of merchantability and fitness for a particular purpose.

An error or omission in the nominating party's Tract description may require that a State mineral lease or geophysical agreement be modified, canceled or abrogated due to the existence of conflicting leases, operating agreements, private claims or other future obligations or conditions within the Tract described. In such case, however, the Louisiana State Mineral and Energy Board shall not be obligated to refund any consideration paid by the Lessee prior to such modification, cancellation or abrogation including, but not limited to, bonuses, rentals and royalties.

Applicant: ROBERT A. SCHROEDER, INC. to Agency and by Resolution from the Orleans Levee District authorizing the Mineral Board to act in its behalf

Bidder	Cash Payment	Price/Acre	Rental	Oil	Gas	Other

15060001
Sections



0 2,000 Feet

TRACT 44320 - Plaquemines Parish, Louisiana

A certain Tract of land, excluding the beds and bottoms of all navigable waters, belonging to and not presently under mineral lease from Orleans Levee District on June 10, 2015, being more fully described as follows: Tracts 155 through 184, Township 19 South Range 16 East, Plaquemines Parish, Louisiana, inclusive, as shown on five (5) certain plats, or maps, marked Sheet No. 1, Sheet No. 2, Sheet No. 3, Sheet No. 4, and Sheet No. 5, showing the property on the East bank of the Mississippi River between the lower limits of Bohemia Plantation and the upper end of the United States Military Reservation at Fort St. Phillip, and which said five (5) maps are paraphrased for identification with an act before Edward C. Brodtmann, Notary Public, of July 3rd, 1925, which act is on file in the Notarial Archives of Orleans Parish. Said Tracts 155 through 184, inclusive, include without limitation, the below described Tracts which are estimated, and for purposes of calculating payments (except royalties) accruing under a lease, shall be deemed, to contain the following corresponding mineral acres net to the Orleans Levee District:

Tract No. 155 at 6 acres,
Tract No. 156 at 17 acres,
Tract No. 158 1/2 at 6 acres,
Tract No. 159 at 3 acres,
Tract No. 161 at 3 acres,
Tract No. 162 & 163 at 1 acre,
Tract No. 164 at 34 acres,
Tract No. 165 at 19 acres,
Tract No. 166 at 4 acres,
Tract No. 168 at 8 acres,
Tract No. 173 at 14 acres,
Tract No. 176 at 3 acres,
Tract No. 177 at 17 acres,
Tract No. 178 at 17 acres,
Tract No. 179 at 17 acres,
Tract No. 181 at 17 acres,
Tract No. 182 at 17 acres, and
Tract No. 184 at 30 acres,

The above described lands are estimated to contain in the aggregate, but are not limited to, net to the Orleans Levee District, **233 mineral acres**, all as more particularly outlined on a plat on file in the Office of Mineral Resources, Department of Natural Resources. The description is based on information provided by the State Agency regarding location and ownership of surface and mineral rights. All bearings, distances and coordinates, if applicable, are based on Louisiana Coordinate System of 1927, (North or South Zone).

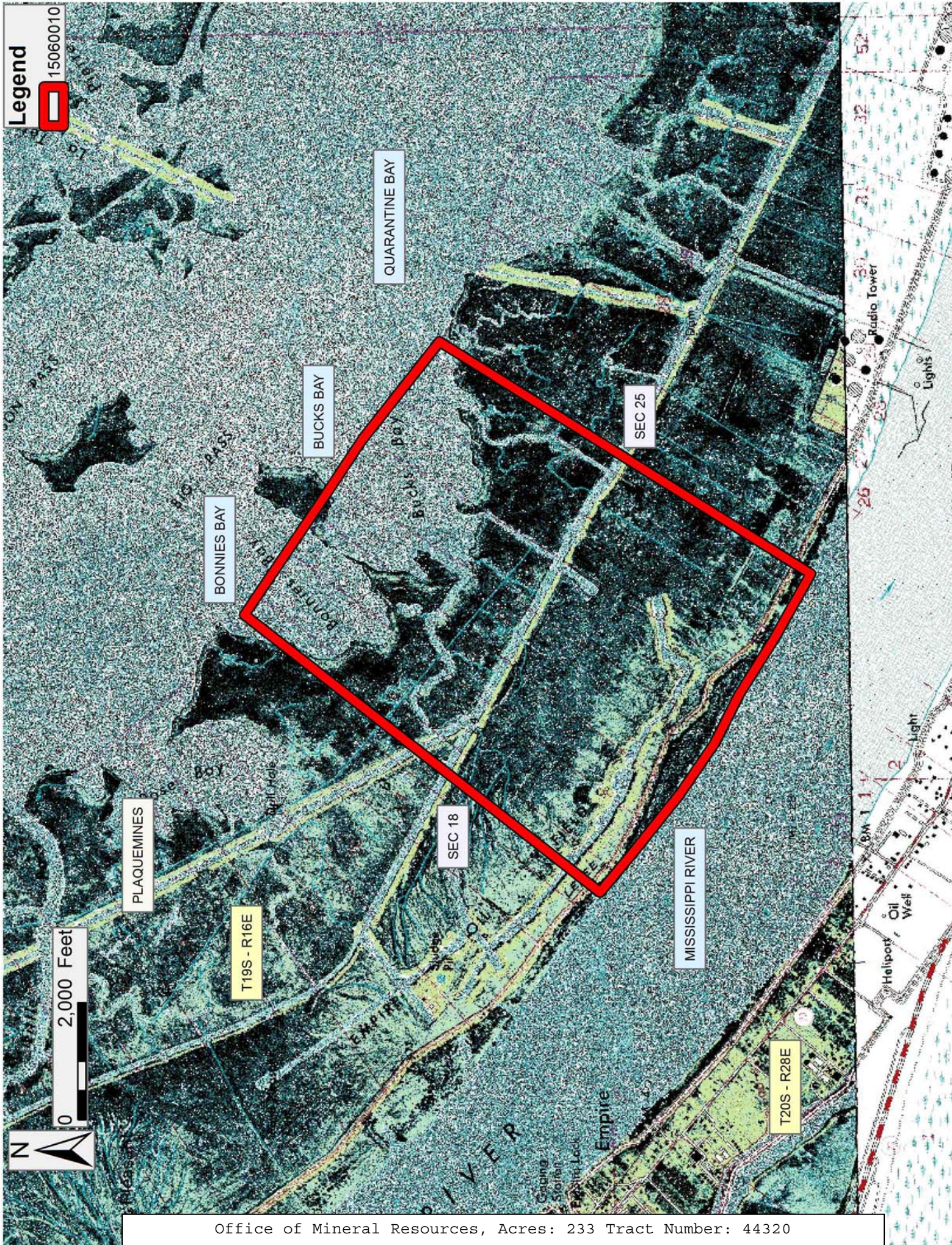
NOTE: The above description of the Tract nominated for the purpose of acquiring a mineral lease or a geophysical agreement has been provided and

corrected, where required, exclusively by the nominating party. Any mineral lease or geophysical agreement selected from this Tract and awarded by the Louisiana State Mineral and Energy Board shall be without warranty of any kind, either express, implied or statutory including, but not limited to, title or the implied warranties of merchantability and fitness for a particular purpose.

An error or omission in the nominating party's Tract description may require that a State mineral lease or geophysical agreement be modified, canceled or abrogated due to the existence of conflicting leases, operating agreements, private claims or other future obligations or conditions within the Tract described. In such case, however, the Louisiana State Mineral and Energy Board shall not be obligated to refund any consideration paid by the Lessee prior to such modification, cancellation or abrogation including, but not limited to, bonuses, rentals and royalties.

Applicant: ROBERT A. SCHROEDER, INC. to Agency and by Resolution from the Orleans Levee District authorizing the Mineral Board to act in its behalf

Bidder	Cash Payment	Price/Acre	Rental	Oil	Gas	Other



Office of Mineral Resources, Acres: 233 Tract Number: 44320

TRACT 44321 - Plaquemines Parish, Louisiana

A certain Tract of land, excluding the beds and bottoms of all navigable waters, belonging to and not presently under mineral lease from Orleans Levee District on June 10, 2015, being more fully described as follows: Tracts 185 through 217, Township 19 South Range 16 and 17 East, Plaquemines Parish, Louisiana, inclusive, as shown on five (5) certain plats, or maps, marked Sheet No. 1, Sheet No. 2, Sheet No. 3, Sheet No. 4, and Sheet No. 5, showing the property on the East bank of the Mississippi River between the lower limits of Bohemia Plantation and the upper end of the United States Military Reservation at Fort St. Phillip, and which said five (5) maps are paraphrased for identification with an act before Edward C. Brodtmann, Notary Public, of July 3rd, 1925, which act is on file in the Notarial Archives of Orleans Parish. Said Tracts 185 through 217, inclusive, include without limitation, the below described Tracts which are estimated, and for purposes of calculating payments (except royalties) accruing under a lease, shall be deemed, to contain the following corresponding mineral acres net to the Orleans Levee District:

Tract No. 185 at 5 acres,
Tract No. 187 at 5 acres,
Tract No. 192 at 68 acres,
Tract No. 193 at 16 acres,
Tract No. 196 at 47 acres,
Tract No. 198 at 16 acres,
Tract No. 199A at 10 acres,
Tract No. 199B at 32 acres,
Tract No. 200 at 14 acres,
Tract No. 201 at 56 acres,
Tract No. 203 at 16 acres,
Tract No. 204 at 12 acres,
Tract No. 207 at 34 acres,
Tract No. 208 at 34 acres,
Tract No. 209 at 51 acres,
Tract No. 211 at 34 acres,
Tract No. 213 at 16 acres,
Tract No. 214 at 102 acres, and
Tract No. 217 at 17 acres,

The above described lands are estimated to contain in the aggregate, but are not limited to, net to the Orleans Levee District **585 mineral acres**, all as more particularly outlined on a plat on file in the Office of Mineral Resources, Department of Natural Resources. The description is based on information provided by the State Agency regarding location and ownership of surface and mineral rights. All bearings, distances and coordinates, if applicable, are based on Louisiana Coordinate System of 1927, (North or South Zone).

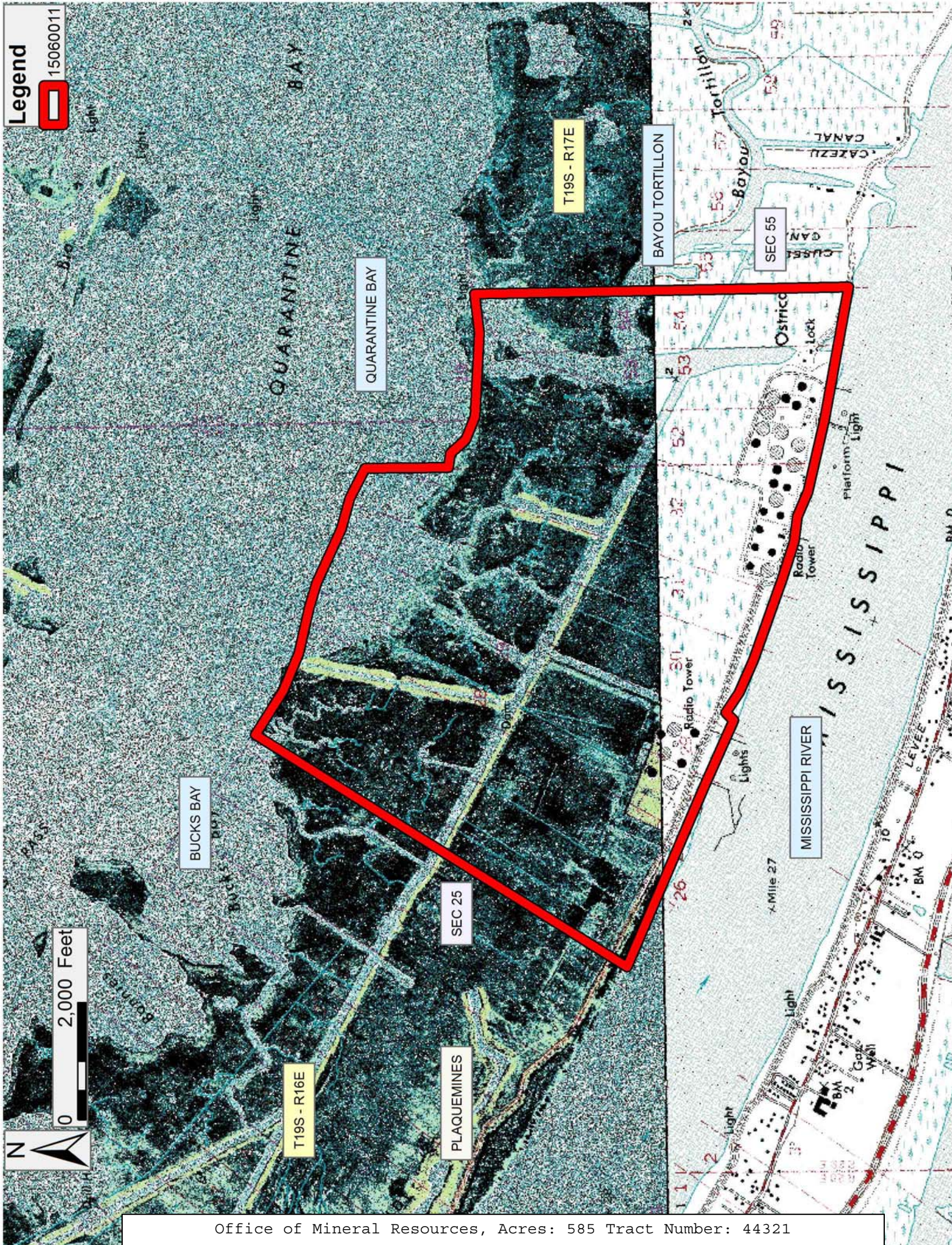
NOTE: The above description of the Tract nominated for the purpose of acquiring a mineral lease or a geophysical agreement has been provided and

corrected, where required, exclusively by the nominating party. Any mineral lease or geophysical agreement selected from this Tract and awarded by the Louisiana State Mineral and Energy Board shall be without warranty of any kind, either express, implied or statutory including, but not limited to, title or the implied warranties of merchantability and fitness for a particular purpose.

An error or omission in the nominating party's Tract description may require that a State mineral lease or geophysical agreement be modified, canceled or abrogated due to the existence of conflicting leases, operating agreements, private claims or other future obligations or conditions within the Tract described. In such case, however, the Louisiana State Mineral and Energy Board shall not be obligated to refund any consideration paid by the Lessee prior to such modification, cancellation or abrogation including, but not limited to, bonuses, rentals and royalties.

Applicant: ROBERT A. SCHROEDER, INC. to Agency and by Resolution from the Orleans Levee District authorizing the Mineral Board to act in its behalf

Bidder	Cash Payment	Price/Acre	Rental	Oil	Gas	Other



Legend
15060011

0 2,000 Feet
N