

TRACT 44287 - Lafourche and St. Charles Parishes, Louisiana

All of the lands now or formerly constituting the beds and bottoms of all water bodies of every nature and description as to which title is vested in the State of Louisiana, together with all islands arising therein and other lands formed by accretion or by reliction, where allowed by law, excepting tax adjudicated lands, and not presently under mineral lease on June 10, 2015, situated in Lafourche and St. Charles Parishes, Louisiana, and more particularly described as follows: Beginning at a point having Coordinates of X = 2,305,376.49 and Y = 381,565.75; thence East 4,316.51 feet to the Northwest corner of State Lease No. 21303 having Coordinates of X = 2,309,693.00 and Y = 381,565.75; thence South 4,205.72 feet along the West of said State Lease No. 21303 to a point having Coordinates of X = 2,309,693.00 and Y = 377,360.03; thence West 4,316.51 feet to a point having Coordinates of X = 2,305,376.49 and Y = 377,360.03; thence North 4,205.72 feet to the point of beginning, containing approximately **109 acres**, all as more particularly outlined on a plat on file in the Office of Mineral Resources, Department of Natural Resources. All bearings, distances and coordinates are based on Louisiana Coordinate System of 1927, (North or South Zone), where applicable.

NOTE: The above description of the Tract nominated for the purpose of acquiring a mineral lease or a geophysical agreement has been provided and corrected, where required, exclusively by the nominating party. Any mineral lease or geophysical agreement selected from this Tract and awarded by the Louisiana State Mineral and Energy Board shall be without warranty of any kind, either express, implied or statutory including, but not limited to, title or the implied warranties of merchantability and fitness for a particular purpose.

An error or omission in the nominating party's Tract description may require that a State mineral lease or geophysical agreement be modified, canceled or abrogated due to the existence of conflicting leases, operating agreements, private claims or other future obligations or conditions within the Tract described. In such case, however, the Louisiana State Mineral and Energy Board shall not be obligated to refund any consideration paid by the Lessee prior to such modification, cancellation or abrogation including, but not limited to, bonuses, rentals and royalties.

NOTE: The State of Louisiana does hereby reserve, and this lease shall be subject to, the imprescriptible right of surface use in the nature of a servitude in favor of the Department of Natural Resources, including its Offices and Commissions, for the sole purpose of implementing, constructing, servicing and maintaining approved coastal zone management and/or restoration projects. Utilization of any and all rights derived under this lease by the mineral lessee, its agents, successors or assigns, shall not interfere with nor hinder the reasonable surface use by the Department of Natural Resources, its Offices or Commissions, as herein above reserved.

NOTE: A portion of this tract is located on or adjacent to a Louisiana designated Natural and Scenic River. The applicant must obtain authorization from the Louisiana Department of Wildlife and Fisheries, Scenic Rivers Program prior to initiating any activities within or adjacent to the river, including, but not limited to, crossings by roads and pipelines, well sites, production facilities and water withdrawals.

Applicant: CUMMINGS LAND SERVICE

Bidder	Cash Payment	Price/Acre	Rental	Oil	Gas	Other

Legend

- 15060012
- Active_Leases
- Counties



TRACT 44288 - Lafourche Parish, Louisiana

All of the lands now or formerly constituting the beds and bottoms of all water bodies of every nature and description as to which title is vested in the State of Louisiana, together with all islands arising therein and other lands formed by accretion or by reliction, where allowed by law, excepting tax adjudicated lands, and not presently under mineral lease on June 10, 2015, situated in Lafourche Parish, Louisiana, and more particularly described as follows: Beginning at a point having Coordinates of X = 2,305,376.49 and Y = 377,360.03; thence East 4,316.51 feet to a point on the West boundary of State Lease No. 21303 having Coordinates of X = 2,309,693.00 and Y = 377,360.03; thence South 1,868.03 feet along the West of said State Lease No. 21303 to its Southwest corner having Coordinates of X = 2,309,693.00 and Y = 375,492.00; thence continue South 4,610.00 feet to a point having Coordinates of X = 2,309,693.00 and Y = 370,882.00; thence West 4,316.51 feet to a point having Coordinates of X = 2,305,376.49 and Y = 370,882.00; thence North 6,478.03 feet to the point of beginning, containing approximately **6 acres**, all as more particularly outlined on a plat on file in the Office of Mineral Resources, Department of Natural Resources. All bearings, distances and coordinates are based on Louisiana Coordinate System of 1927, (North or South Zone), where applicable.

NOTE: The above description of the Tract nominated for the purpose of acquiring a mineral lease or a geophysical agreement has been provided and corrected, where required, exclusively by the nominating party. Any mineral lease or geophysical agreement selected from this Tract and awarded by the Louisiana State Mineral and Energy Board shall be without warranty of any kind, either express, implied or statutory including, but not limited to, title or the implied warranties of merchantability and fitness for a particular purpose.

An error or omission in the nominating party's Tract description may require that a State mineral lease or geophysical agreement be modified, canceled or abrogated due to the existence of conflicting leases, operating agreements, private claims or other future obligations or conditions within the Tract described. In such case, however, the Louisiana State Mineral and Energy Board shall not be obligated to refund any consideration paid by the Lessee prior to such modification, cancellation or abrogation including, but not limited to, bonuses, rentals and royalties.

NOTE: The State of Louisiana does hereby reserve, and this lease shall be subject to, the imprescriptible right of surface use in the nature of a servitude in favor of the Department of Natural Resources, including its Offices and Commissions, for the sole purpose of implementing, constructing, servicing and maintaining approved coastal zone management and/or restoration projects. Utilization of any and all rights derived under this lease by the mineral lessee, its agents, successors or assigns, shall not interfere with nor hinder the reasonable surface use by the

Department of Natural Resources, its Offices or Commissions, as herein above reserved.

NOTE: A portion of this tract is located on or adjacent to a Louisiana designated Natural and Scenic River. The applicant must obtain authorization from the Louisiana Department of Wildlife and Fisheries, Scenic Rivers Program prior to initiating any activities within or adjacent to the river, including, but not limited to, crossings by roads and pipelines, well sites, production facilities and water withdrawals.

Applicant: CUMMINGS LAND SERVICE

Bidder	Cash Payment	Price/Acre	Rental	Oil	Gas	Other



Legend

- 15060014 (Red rectangle)
- Active_Leases (Green dashed line)
- Counties (Yellow line)

ST CHARLES

LAKE SALVADOR

SL 21303

BAYOU POULE DE EAU

BAYOU VACHERIE

BAYOU DES ALLEMANDS

LAFOURCHE

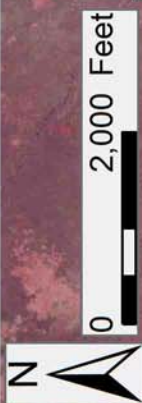
P.O.B.

T16S - R21E

SEC 38

T16S - R20E

SEC 37



TRACT 44289 - Lafourche Parish, Louisiana

All of the lands now or formerly constituting the beds and bottoms of all water bodies of every nature and description as to which title is vested in the State of Louisiana, together with all islands arising therein and other lands formed by accretion or by reliction, where allowed by law, excepting tax adjudicated lands, and not presently under mineral lease on June 10, 2015, situated in Lafourche Parish, Louisiana, and more particularly described as follows: Beginning at the Southwest corner of State Lease No. 21303 having Coordinates of X = 2,309,693.00 and Y = 375,492.00; thence East 1,664.62 feet along the South boundary of said State Lease No. 21303 to its Southeast corner and a point on the West boundary of State Lease No. 21060 having Coordinates of X = 2,311,357.62 and Y = 375,492.00; thence South 4,610.00 feet along the West boundary of said State Lease No. 21060 to its Southwest corner having Coordinates of X = 2,311,357.62 and Y = 370,882.00; thence West 1,664.62 feet to a point having Coordinates of X = 2,309,693.00 and Y = 370,882.00; thence North 4,610.00 feet to the point of beginning, containing approximately **10 acres**, all as more particularly outlined on a plat on file in the Office of Mineral Resources, Department of Natural Resources. All bearings, distances and coordinates are based on Louisiana Coordinate System of 1927, (North or South Zone), where applicable.

NOTE: The above description of the Tract nominated for the purpose of acquiring a mineral lease or a geophysical agreement has been provided and corrected, where required, exclusively by the nominating party. Any mineral lease or geophysical agreement selected from this Tract and awarded by the Louisiana State Mineral and Energy Board shall be without warranty of any kind, either express, implied or statutory including, but not limited to, title or the implied warranties of merchantability and fitness for a particular purpose.

An error or omission in the nominating party's Tract description may require that a State mineral lease or geophysical agreement be modified, canceled or abrogated due to the existence of conflicting leases, operating agreements, private claims or other future obligations or conditions within the Tract described. In such case, however, the Louisiana State Mineral and Energy Board shall not be obligated to refund any consideration paid by the Lessee prior to such modification, cancellation or abrogation including, but not limited to, bonuses, rentals and royalties.

NOTE: The State of Louisiana does hereby reserve, and this lease shall be subject to, the imprescriptible right of surface use in the nature of a servitude in favor of the Department of Natural Resources, including its Offices and Commissions, for the sole purpose of implementing, constructing, servicing and maintaining approved coastal zone management and/or restoration projects. Utilization of any and all rights derived under this lease by the mineral lessee, its agents, successors or assigns, shall not interfere with nor hinder the reasonable surface use by the

Department of Natural Resources, its Offices or Commissions, as herein above reserved.

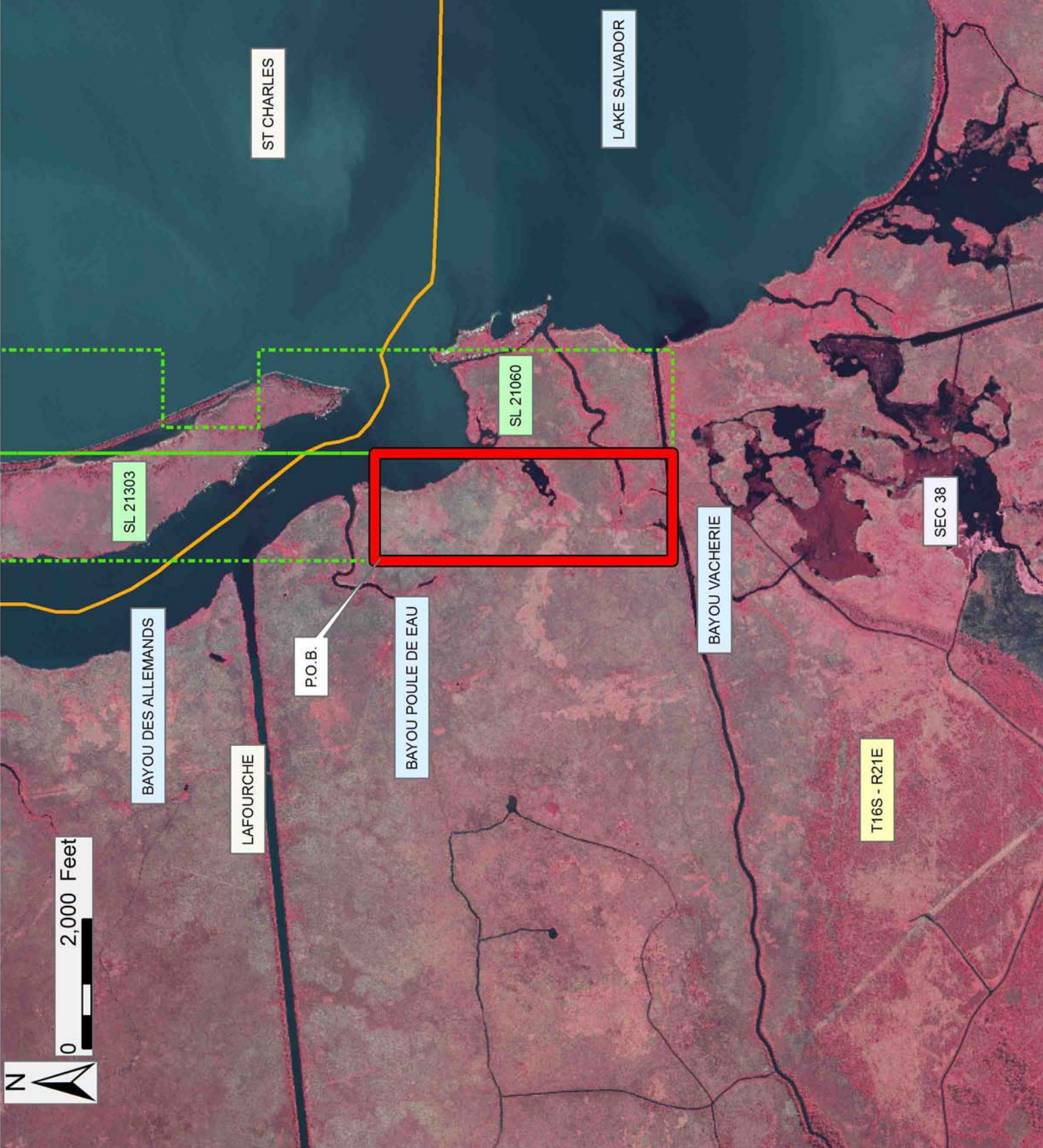
NOTE: A portion of this tract is located on or adjacent to a Louisiana designated Natural and Scenic River. The applicant must obtain authorization from the Louisiana Department of Wildlife and Fisheries, Scenic Rivers Program prior to initiating any activities within or adjacent to the river, including, but not limited to, crossings by roads and pipelines, well sites, production facilities and water withdrawals.

Applicant: CUMMINGS LAND SERVICE

Bidder	Cash Payment	Price/Acre	Rental	Oil	Gas	Other

Legend

- 15060013
- Active_Leases
- Counties



TRACT 44290 - Plaquemines Parish, Louisiana

All of the lands now or formerly constituting the beds and bottoms of all water bodies of every nature and description as to which title is vested in the State of Louisiana, together with all islands arising therein and other lands formed by accretion or by reliction, where allowed by law, excepting tax adjudicated lands, and not presently under mineral lease on June 10, 2015, situated in Plaquemines Parish, Louisiana, and more particularly described as follows: Beginning at a point having Coordinates of X = 2,558,843.12 and Y = 266,776.56; thence North 41 degrees 37 minutes 37 seconds West 9,666.32 feet to a point having Coordinates of X = 2,552,422.00 and Y = 274,002.00; thence North 62 degrees 48 minutes 33 seconds East 8,477.89 feet to a point having Coordinates of X = 2,559,963.00 and Y = 277,876.00; thence South 45 degrees 54 minutes 17 seconds East approximately 1,500 feet, to a point on a Western boundary of State Lease No. 195, as amended; thence Southeasterly approximately 16,750 feet along the Western and Southern boundaries of said State Lease No. 195, as amended, to a point of intersection with a line that bears North 39 degrees 51 minutes 06 seconds East from the point of beginning; thence South 39 degrees 51 minutes 06 seconds West approximately 7,750 feet to the point of beginning; **LESS AND EXCEPT** any portion of State Lease 195, as amended, that may lie within the above described tract, and **LESS AND EXCEPT** any right, title, and interest in lands owned by and not under lease from the State of Louisiana, on behalf of the Plaquemines Parish School Board, situated in Section 16, Township 19 South, Range 16 East, Plaquemines Parish, Louisiana, contained within the above described tract, containing approximately **117 acres**, all as more particularly outlined on a plat on file in the Office of Mineral Resources, Department of Natural Resources. All bearings, distances and coordinates are based on Louisiana Coordinate System of 1927, (North or South Zone), where applicable.

NOTE: The above description of the Tract nominated for the purpose of acquiring a mineral lease or a geophysical agreement has been provided and corrected, where required, exclusively by the nominating party. Any mineral lease or geophysical agreement selected from this Tract and awarded by the Louisiana State Mineral and Energy Board shall be without warranty of any kind, either express, implied or statutory including, but not limited to, title or the implied warranties of merchantability and fitness for a particular purpose.

An error or omission in the nominating party's Tract description may require that a State mineral lease or geophysical agreement be modified, canceled or abrogated due to the existence of conflicting leases, operating agreements, private claims or other future obligations or conditions within the Tract described. In such case, however, the Louisiana State Mineral and Energy Board shall not be obligated to refund any consideration paid by the Lessee prior to such modification, cancellation or abrogation including, but not limited to, bonuses, rentals and royalties.

NOTE: The State of Louisiana does hereby reserve, and this lease shall be subject to, the imprescriptible right of surface use in the nature of a servitude in favor of the Department of Natural Resources, including its Offices and Commissions, for the sole purpose of implementing, constructing, servicing and maintaining approved coastal zone management and/or restoration projects. Utilization of any and all rights derived under this lease by the mineral lessee, its agents, successors or assigns, shall not interfere with nor hinder the reasonable surface use by the Department of Natural Resources, its Offices or Commissions, as herein above reserved.

Applicant: ROBERT A. SCHROEDER, INC.

Bidder	Cash Payment	Price/Acre	Rental	Oil	Gas	Other



TRACT 44291 - Plaquemines Parish, Louisiana

All of the lands now or formerly constituting the beds and bottoms of all water bodies of every nature and description as to which title is vested in the State of Louisiana, together with all islands arising therein and other lands formed by accretion or by reliction, where allowed by law, excepting tax adjudicated lands, and not presently under mineral lease on June 10, 2015, situated in Plaquemines Parish, Louisiana, and more particularly described as follows: Beginning at a point having Coordinates of X = 2,556,103.07 and Y = 263,462.54; thence North 55 degrees 13 minutes 34 seconds West 1,540.51 feet to a point having Coordinates of X = 2,554,837.68 and Y = 264,341.15; thence North 41 degrees 58 minutes 47 seconds West 2,149.43 feet to a point having Coordinates of X = 2,553,400.00 and Y = 265,939.00; thence North 34 degrees 23 minutes 27 seconds West 7,652.11 feet to a point having Coordinates of X = 2,549,077.82 and Y = 272,253.55; thence North 62 degrees 23 minutes 53 seconds East 3,773.67 feet to a point having Coordinates of X = 2,552,422.00 and Y = 274,002.00; thence South 41 degrees 37 minutes 37 seconds East 9,666.32 feet to a point having Coordinates of X = 2,558,843.12 and Y = 266,776.56; thence South 39 degrees 35 minutes 03 seconds West 4,300.08 feet to the point of beginning, **LESS AND EXCEPT** any right, title, and interest in lands owned by and not under lease from the State of Louisiana, on behalf of the Plaquemines Parish School Board, situated in Section 16, Township 19 South, Range 16 East, Plaquemines Parish, Louisiana, contained within the above described tract, (This tract includes only waterbottoms claimed and owned by the state and specifically excludes any land which the state may claim or own and to which the mineral rights are vested in the state), containing approximately **637 acres**, all as more particularly outlined on a plat on file in the Office of Mineral Resources, Department of Natural Resources. All bearings, distances and coordinates are based on Louisiana Coordinate System of 1927, (North or South Zone), where applicable.

NOTE: The above description of the Tract nominated for the purpose of acquiring a mineral lease or a geophysical agreement has been provided and corrected, where required, exclusively by the nominating party. Any mineral lease or geophysical agreement selected from this Tract and awarded by the Louisiana State Mineral and Energy Board shall be without warranty of any kind, either express, implied or statutory including, but not limited to, title or the implied warranties of merchantability and fitness for a particular purpose.

An error or omission in the nominating party's Tract description may require that a State mineral lease or geophysical agreement be modified, canceled or abrogated due to the existence of conflicting leases, operating agreements, private claims or other future obligations or conditions within the Tract described. In such case, however, the Louisiana State Mineral and Energy Board shall not be obligated to refund any consideration paid by the Lessee prior to such modification,

cancellation or abrogation including, but not limited to, bonuses, rentals and royalties.

NOTE: The State of Louisiana does hereby reserve, and this lease shall be subject to, the imprescriptible right of surface use in the nature of a servitude in favor of the Department of Natural Resources, including its Offices and Commissions, for the sole purpose of implementing, constructing, servicing and maintaining approved coastal zone management and/or restoration projects. Utilization of any and all rights derived under this lease by the mineral lessee, its agents, successors or assigns, shall not interfere with nor hinder the reasonable surface use by the Department of Natural Resources, its Offices or Commissions, as herein above reserved.

Applicant: ROBERT A. SCHROEDER, INC.

Bidder	Cash Payment	Price/Acre	Rental	Oil	Gas	Other



Legend

15060005

PLAQUEMINES

MISSISSIPPI RIVER

T19S - R16E

P.O.B.

T20S - R28E

T19S - R28E

ADAMS BAY

0 2,000 Feet



TRACT 44292 - Plaquemines Parish, Louisiana

All of the lands now or formerly constituting the beds and bottoms of all water bodies of every nature and description as to which title is vested in the State of Louisiana, together with all islands arising therein and other lands formed by accretion or by reliction, where allowed by law, excepting tax adjudicated lands, and not presently under mineral lease on June 10, 2015, situated in Plaquemines Parish, Louisiana, and more particularly described as follows: Beginning at a point having Coordinates of X = 2,558,843.12 and Y = 266,776.56; thence North 39 degrees 51 minutes 06 seconds East approximately 7,750 feet, to a point on a Southern boundary of State Lease No. 195, as amended; thence Southeasterly approximately 16,104 feet along said Southern boundary of said State Lease No. 195, as amended, to a point of intersection with a line commencing at a point having Coordinates of X = 2,564,239.89 and Y = 263,104.12 and having a bearing of North 31 degrees 34 minutes 24 seconds East; thence South 31 degrees 34 minutes 24 seconds West approximately 7,000 feet along said line to a point having Coordinates of X = 2,564,239.89 and Y = 263,104.12; thence North 55 degrees 45 minutes 55 seconds West 6,527.78 feet to the point of beginning, **LESS AND EXCEPT** any portion of State Lease 195, as amended, that may lie within the above described tract, containing approximately **79 acres**, all as more particularly outlined on a plat on file in the Office of Mineral Resources, Department of Natural Resources. All bearings, distances and coordinates are based on Louisiana Coordinate System of 1927, (North or South Zone), where applicable.

NOTE: The above description of the Tract nominated for the purpose of acquiring a mineral lease or a geophysical agreement has been provided and corrected, where required, exclusively by the nominating party. Any mineral lease or geophysical agreement selected from this Tract and awarded by the Louisiana State Mineral and Energy Board shall be without warranty of any kind, either express, implied or statutory including, but not limited to, title or the implied warranties of merchantability and fitness for a particular purpose.

An error or omission in the nominating party's Tract description may require that a State mineral lease or geophysical agreement be modified, canceled or abrogated due to the existence of conflicting leases, operating agreements, private claims or other future obligations or conditions within the Tract described. In such case, however, the Louisiana State Mineral and Energy Board shall not be obligated to refund any consideration paid by the Lessee prior to such modification, cancellation or abrogation including, but not limited to, bonuses, rentals and royalties.

NOTE: The State of Louisiana does hereby reserve, and this lease shall be subject to, the imprescriptible right of surface use in the nature of a servitude in favor of the Department of Natural Resources, including its Offices and Commissions, for the sole purpose of implementing, constructing, servicing and maintaining approved coastal zone management

and/or restoration projects. Utilization of any and all rights derived under this lease by the mineral lessee, its agents, successors or assigns, shall not interfere with nor hinder the reasonable surface use by the Department of Natural Resources, its Offices or Commissions, as herein above reserved.

Applicant: ROBERT A. SCHROEDER, INC.

Bidder	Cash Payment	Price/Acre	Rental	Oil	Gas	Other



TRACT 44293 - Plaquemines Parish, Louisiana

All of the lands now or formerly constituting the beds and bottoms of all water bodies of every nature and description as to which title is vested in the State of Louisiana, together with all islands arising therein and other lands formed by accretion or by reliction, where allowed by law, excepting tax adjudicated lands, and not presently under mineral lease on June 10, 2015, situated in Plaquemines Parish, Louisiana, and more particularly described as follows: Beginning at a point having Coordinates of X = 2,564,239.89 and Y = 263,104.12; thence North 31 degrees 34 minutes 24 seconds East approximately 7,000 feet, to a point on a Southern boundary of State Lease No. 195, as amended; thence Southeasterly approximately 10,531 feet along said Southern boundary of said State Lease No. 195, as amended, to a point of intersection with a North-South line having a Coordinate of X = 2,575,558.00; thence South approximately 6,700 feet, to a point having Coordinates of X = 2,575,558.00 and Y = 259,029.78; thence North 74 degrees 36 minutes 51 seconds West 6,012.48 feet to a point having Coordinates of X = 2,569,761.00 and Y = 260,625.00; thence North 65 degrees 49 minutes 07 seconds West 6,052.17 feet to the point of beginning, **LESS AND EXCEPT** any portion of State Lease 195, as amended, that may lie within the above described tract, containing approximately **78 acres**, all as more particularly outlined on a plat on file in the Office of Mineral Resources, Department of Natural Resources. All bearings, distances and coordinates are based on Louisiana Coordinate System of 1927, (North or South Zone), where applicable.

NOTE: The above description of the Tract nominated for the purpose of acquiring a mineral lease or a geophysical agreement has been provided and corrected, where required, exclusively by the nominating party. Any mineral lease or geophysical agreement selected from this Tract and awarded by the Louisiana State Mineral and Energy Board shall be without warranty of any kind, either express, implied or statutory including, but not limited to, title or the implied warranties of merchantability and fitness for a particular purpose.

An error or omission in the nominating party's Tract description may require that a State mineral lease or geophysical agreement be modified, canceled or abrogated due to the existence of conflicting leases, operating agreements, private claims or other future obligations or conditions within the Tract described. In such case, however, the Louisiana State Mineral and Energy Board shall not be obligated to refund any consideration paid by the Lessee prior to such modification, cancellation or abrogation including, but not limited to, bonuses, rentals and royalties.

NOTE: The State of Louisiana does hereby reserve, and this lease shall be subject to, the imprescriptible right of surface use in the nature of a servitude in favor of the Department of Natural Resources, including its Offices and Commissions, for the sole purpose of implementing, constructing, servicing and maintaining approved coastal zone management

and/or restoration projects. Utilization of any and all rights derived under this lease by the mineral lessee, its agents, successors or assigns, shall not interfere with nor hinder the reasonable surface use by the Department of Natural Resources, its Offices or Commissions, as herein above reserved.

Applicant: ROBERT A. SCHROEDER, INC.

Bidder	Cash Payment	Price/Acre	Rental	Oil	Gas	Other

Legend

- 15060008
- Active_Leases
- Counties



TRACT 44294 - Plaquemines Parish, Louisiana

All of the lands now or formerly constituting the beds and bottoms of all water bodies of every nature and description as to which title is vested in the State of Louisiana, together with all islands arising therein and other lands formed by accretion or by reliction, where allowed by law, excepting tax adjudicated lands, and not presently under mineral lease on June 10, 2015, situated in Plaquemines Parish, Louisiana, and more particularly described as follows: Beginning at a point having Coordinates of X = 2,556,811.90 and Y = 262,970.36, said point being the westernmost corner of State Lease No. 18165, as amended; thence North 55 degrees 13 minutes 33 seconds West 862.95 feet to a point having Coordinates of X = 2,556,103.07 and Y = 263,462.54; thence North 39 degrees 35 minutes 03 seconds East 4,300.08 feet to a point having Coordinates of X = 2,558,843.12 and Y = 266,776.56; thence South 55 degrees 45 minutes 54 seconds East 6,527.78 feet to a point having Coordinates of X = 2,564,239.89 and Y = 263,104.12; thence South 31 degrees 08 minutes 39 seconds West 3,924.81 feet to a point having Coordinates of X = 2,562,210.00 and Y = 259,745.00; thence North 64 degrees 13 minutes 58 seconds West 867.23 feet to a point having Coordinates of X = 2,561,429.00 and Y = 260,122.00; thence North 51 degrees 07 minutes 22 seconds East 573.02 feet to a point having Coordinates of X = 2,561,875.09 and Y = 260,481.66, said point being the southernmost corner of State Lease No. 16710, as amended; thence on and along the eastern and northern boundaries of said State Lease No. 16710, as amended, the following bearings and distances, to wit: North 56 degrees 23 minutes 15 seconds East 961.00 feet to a point having Coordinates of X = 2,562,675.41 and Y = 261,013.64; and North 33 degrees 07 minutes 57 seconds West 1,359.42 feet to a point having Coordinates of X = 2,561,932.38 and Y = 262,152.03, said point being the Northernmost corner of said State Lease No. 16710, as amended, said point also being the Easternmost corner of State Lease No. 21187; thence North 33 degrees 07 minutes 58 seconds West 250.01 feet on and along the Eastern boundary of said State Lease No. 21187 to a point having Coordinates of X = 2,561,795.73 and Y = 262,361.39, said point being the Northernmost corner of said State Lease No. 21187, said point also being on the Eastern boundary of said State Lease No. 18165, as amended; thence on and along the Eastern, Northern and Western boundaries of said State Lease No. 18165, as amended, the following bearings and distances, to wit: North 76 degrees 00 minutes 01 seconds East 877.94 feet to a point having Coordinates of X = 2,562,647.59 and Y = 262,573.78 North 55 degrees 21 minutes 25 seconds West 1,558.96 feet to a point having Coordinates of X = 2,561,365.02 and Y = 263,459.99; North 40 degrees 25 minutes 04 seconds West 1,150.61 feet to a point having Coordinates of X = 2,560,619.02 and Y = 264,335.99; North 49 degrees 36 minutes 00 seconds West 308.59 feet to a point having Coordinates of X = 2,560,384.01 and Y = 264,536.00; North 56 degrees 45 minutes 05 seconds West 683.97 feet to a point having Coordinates of X = 2,559,812.01 and Y = 264,911.00; North 66 degrees 02 minutes 15 seconds West 384.11 feet to a point having Coordinates of X = 2,559,461.00 and Y = 265,067.00; North 69 degrees 24 minutes 47 seconds West 726.99 feet to a point having Coordinates of X = 2,558,780.44 and Y =

265,322.63; and South 39 degrees 55 minutes 30 seconds West 3,067.30 feet to the point of beginning, containing approximately **188 acres**, all as more particularly outlined on a plat on file in the Office of Mineral Resources, Department of Natural Resources. All bearings, distances and coordinates are based on Louisiana Coordinate System of 1927, (North or South Zone), where applicable.

NOTE: The above description of the Tract nominated for the purpose of acquiring a mineral lease or a geophysical agreement has been provided and corrected, where required, exclusively by the nominating party. Any mineral lease or geophysical agreement selected from this Tract and awarded by the Louisiana State Mineral and Energy Board shall be without warranty of any kind, either express, implied or statutory including, but not limited to, title or the implied warranties of merchantability and fitness for a particular purpose.

An error or omission in the nominating party's Tract description may require that a State mineral lease or geophysical agreement be modified, canceled or abrogated due to the existence of conflicting leases, operating agreements, private claims or other future obligations or conditions within the Tract described. In such case, however, the Louisiana State Mineral and Energy Board shall not be obligated to refund any consideration paid by the Lessee prior to such modification, cancellation or abrogation including, but not limited to, bonuses, rentals and royalties.

NOTE: The State of Louisiana does hereby reserve, and this lease shall be subject to, the imprescriptible right of surface use in the nature of a servitude in favor of the Department of Natural Resources, including its Offices and Commissions, for the sole purpose of implementing, constructing, servicing and maintaining approved coastal zone management and/or restoration projects. Utilization of any and all rights derived under this lease by the mineral lessee, its agents, successors or assigns, shall not interfere with nor hinder the reasonable surface use by the Department of Natural Resources, its Offices or Commissions, as herein above reserved.

Bidder	Cash Payment	Price/Acre	Rental	Oil	Gas	Other

Applicant: ROBERT A. SCHROEDER, INC.

Legend

15060004

Active_Leases



TRACT 44295 - Plaquemines Parish, Louisiana

All of the lands now or formerly constituting the beds and bottoms of all water bodies of every nature and description as to which title is vested in the State of Louisiana, together with all islands arising therein and other lands formed by accretion or by reliction, where allowed by law, excepting tax adjudicated lands, and not presently under mineral lease on June 10, 2015, situated in Plaquemines Parish, Louisiana, and more particularly described as follows: Beginning at a point having Coordinates of X = 2,562,210.00 and Y = 259,745.00; thence North 31 degrees 08 minutes 39 seconds East 3,924.81 feet to a point having Coordinates of X = 2,564,239.89 and Y = 263,104.12; thence South 65 degrees 49 minutes 07 seconds East 6,052.17 feet to a point having Coordinates of X = 2,569,761.00 and Y = 260,625.00; thence South 74 degrees 36 minutes 51 seconds East 6,012.48 feet to a point having Coordinates of X = 2,575,558.00 and Y = 259,029.78; thence South 3,526.34 feet to a point having Coordinates of X = 2,575,558.00 and Y = 255,503.44; thence North 75 degrees 26 minutes 34 seconds West 7,394.38 feet to a point having Coordinates of X = 2,568,401.00 and Y = 257,362.00; thence North 68 degrees 56 minutes 51 seconds West 6,633.79 feet to the point of beginning, containing approximately **863 acres**, all as more particularly outlined on a plat on file in the Office of Mineral Resources, Department of Natural Resources. All bearings, distances and coordinates are based on Louisiana Coordinate System of 1927, (North or South Zone), where applicable.

NOTE: The above description of the Tract nominated for the purpose of acquiring a mineral lease or a geophysical agreement has been provided and corrected, where required, exclusively by the nominating party. Any mineral lease or geophysical agreement selected from this Tract and awarded by the Louisiana State Mineral and Energy Board shall be without warranty of any kind, either express, implied or statutory including, but not limited to, title or the implied warranties of merchantability and fitness for a particular purpose.

An error or omission in the nominating party's Tract description may require that a State mineral lease or geophysical agreement be modified, canceled or abrogated due to the existence of conflicting leases, operating agreements, private claims or other future obligations or conditions within the Tract described. In such case, however, the Louisiana State Mineral and Energy Board shall not be obligated to refund any consideration paid by the Lessee prior to such modification, cancellation or abrogation including, but not limited to, bonuses, rentals and royalties.

NOTE: The State of Louisiana does hereby reserve, and this lease shall be subject to, the imprescriptible right of surface use in the nature of a servitude in favor of the Department of Natural Resources, including its Offices and Commissions, for the sole purpose of implementing, constructing, servicing and maintaining approved coastal zone management

and/or restoration projects. Utilization of any and all rights derived under this lease by the mineral lessee, its agents, successors or assigns, shall not interfere with nor hinder the reasonable surface use by the Department of Natural Resources, its Offices or Commissions, as herein above reserved.

Applicant: ROBERT A. SCHROEDER, INC.

Bidder	Cash Payment	Price/Acre	Rental	Oil	Gas	Other



TRACT 44296 - Lafourche Parish, Louisiana

All of the lands now or formerly constituting the beds and bottoms of all water bodies of every nature and description as to which title is vested in the State of Louisiana, together with all islands arising therein and other lands formed by accretion or by reliction, where allowed by law, excepting tax adjudicated lands, and not presently under mineral lease on June 10, 2015, situated in Lafourche Parish, Louisiana, and more particularly described as follows: Beginning at a corner of State Lease No. 20972, also being a point on the Southern boundary of State Lease No. 20971 having Coordinates of X = 2,354,789.50 and Y = 220,318.31; thence East 958.11 feet along the boundary of said State Lease No. 20971 to a corner of said State Lease No. 20972 having Coordinates of X = 2,355,747.61 and Y = 220,318.31; thence along the boundary of said State Lease No. 20972 the following courses: South 674.75 feet to a point having Coordinates of X = 2,355,747.61 and Y = 219,643.56, West 958.11 feet to a point having Coordinates of X = 2,354,789.50 and Y = 219,643.56 and North 674.75 feet to the point of beginning, containing approximately **6 acres**, all as more particularly outlined on a plat on file in the Office of Mineral Resources, Department of Natural Resources. All bearings, distances and coordinates are based on Louisiana Coordinate System of 1927, (North or South Zone), where applicable.

NOTE: The above description of the Tract nominated for the purpose of acquiring a mineral lease or a geophysical agreement has been provided and corrected, where required, exclusively by the nominating party. Any mineral lease or geophysical agreement selected from this Tract and awarded by the Louisiana State Mineral and Energy Board shall be without warranty of any kind, either express, implied or statutory including, but not limited to, title or the implied warranties of merchantability and fitness for a particular purpose.

An error or omission in the nominating party's Tract description may require that a State mineral lease or geophysical agreement be modified, canceled or abrogated due to the existence of conflicting leases, operating agreements, private claims or other future obligations or conditions within the Tract described. In such case, however, the Louisiana State Mineral and Energy Board shall not be obligated to refund any consideration paid by the Lessee prior to such modification, cancellation or abrogation including, but not limited to, bonuses, rentals and royalties.

NOTE: The State of Louisiana does hereby reserve, and this lease shall be subject to, the imprescriptible right of surface use in the nature of a servitude in favor of the Department of Natural Resources, including its Offices and Commissions, for the sole purpose of implementing, constructing, servicing and maintaining approved coastal zone management and/or restoration projects. Utilization of any and all rights derived under this lease by the mineral lessee, its agents, successors or assigns, shall not interfere with nor hinder the reasonable surface use by the

Department of Natural Resources, its Offices or Commissions, as herein above reserved.

Applicant: SOUTH LOUISIANA MINERALS, INC.

Bidder	Cash Payment	Price/Acre	Rental	Oil	Gas	Other

Legend

- 15060015
- Active_Leases

