

**TRACT 41008 - Red River Parish, Louisiana**

All of the lands now or formerly constituting the beds and bottoms of all water bodies of every nature and description as to which title is vested in the State of Louisiana, together with all islands arising therein and other lands formed by accretion or by reliction, where allowed by law, excepting tax adjudicated lands, and not presently under mineral lease on June 10, 2009, situated in Red River Parish, Louisiana, and more particularly described as follows: Beginning at the Southwest corner of State Lease No. 19836, having Coordinates of X = 1,739,940.00 and Y = 508,134.10; thence South 14,834.10 feet to a point having Coordinates of X = 1,739,940.00 and Y = 493,300.00; thence West 15,875.00 feet to a point having Coordinates of X = 1,724,065.00 and Y = 493,300.00; thence Northerly approximately 4,387 feet to the Southwest corner of State Lease No. 13045; thence Easterly approximately 5,316 feet along the South boundary of said State Lease No. 13045 to its Southeast corner; thence Northerly approximately 1,080 feet along the East boundary of said State Lease No. 13045 to a point on the South boundary of State Lease No. 13697, as amended; thence along the South, East and North boundary of said State Lease No. 13697 the following courses and distances: Easterly approximately 661 feet, Northerly approximately 4,322 feet and Westerly approximately 612 feet to a point on the East boundary of Operating Agreement AO 0158; thence Northerly approximately 5,218 feet along the East boundary of said Operating Agreement AO 0158, to its Easternmost Northeast corner; thence Easterly approximately 10,448 feet to the point of beginning, **LESS AND EXCEPT** that portion, if any, of State Lease No. 13697, as amended, State Lease No. 13045 and Operating Agreement AO 0158, which may lie within the above described tract, containing approximately **195 acres**, all as more particularly outlined on a plat on file in the Office of Mineral Resources, Department of Natural Resources. All bearings, distances and coordinates are based on Louisiana Coordinate System of 1927, (North or South Zone), where applicable.

NOTE: The above description of the Tract nominated for lease has been provided and corrected, where required, exclusively by the nomination party. Any mineral lease selected from this Tract and awarded by the Louisiana State Mineral Board shall be without warranty of any kind, either express, implied, or statutory, including, but not limited to, the implied warranties of merchantability and fitness for a particular purpose. Should the mineral lease awarded by the Louisiana State Mineral Board be subsequently modified, cancelled or abrogated due to the existence of conflicting leases, operating agreements, private claims or other future obligations or conditions which may affect all or any portion of the leased Tract, it shall not relieve the Lessee of the obligation to pay any bonus due thereon to the Louisiana State Mineral Board, nor shall the Louisiana State Mineral Board be obligated to refund any consideration paid by the Lessor prior to such modification, cancellation, or abrogation, including, but not limited to, bonuses, rentals and royalties.

Applicant: THEOPHILUS OIL, GAS & LAND SERVICES, LLC

Bidder	Cash Payment	Price/ Acre	Rental	Oil	Gas	Other

09060019  
Active\_Lease  
D0002004

T13N - R9W

SL 19836

T12N - R9W

P.O.B.

RED RIVER PARISH

BAYOU NICHOLAS

T13N - R10W

COUSHATTA BAYOU

AO 0158

T12N - R10W

SL 13697

SL 13045

RED RIVER

0 3,000 Feet

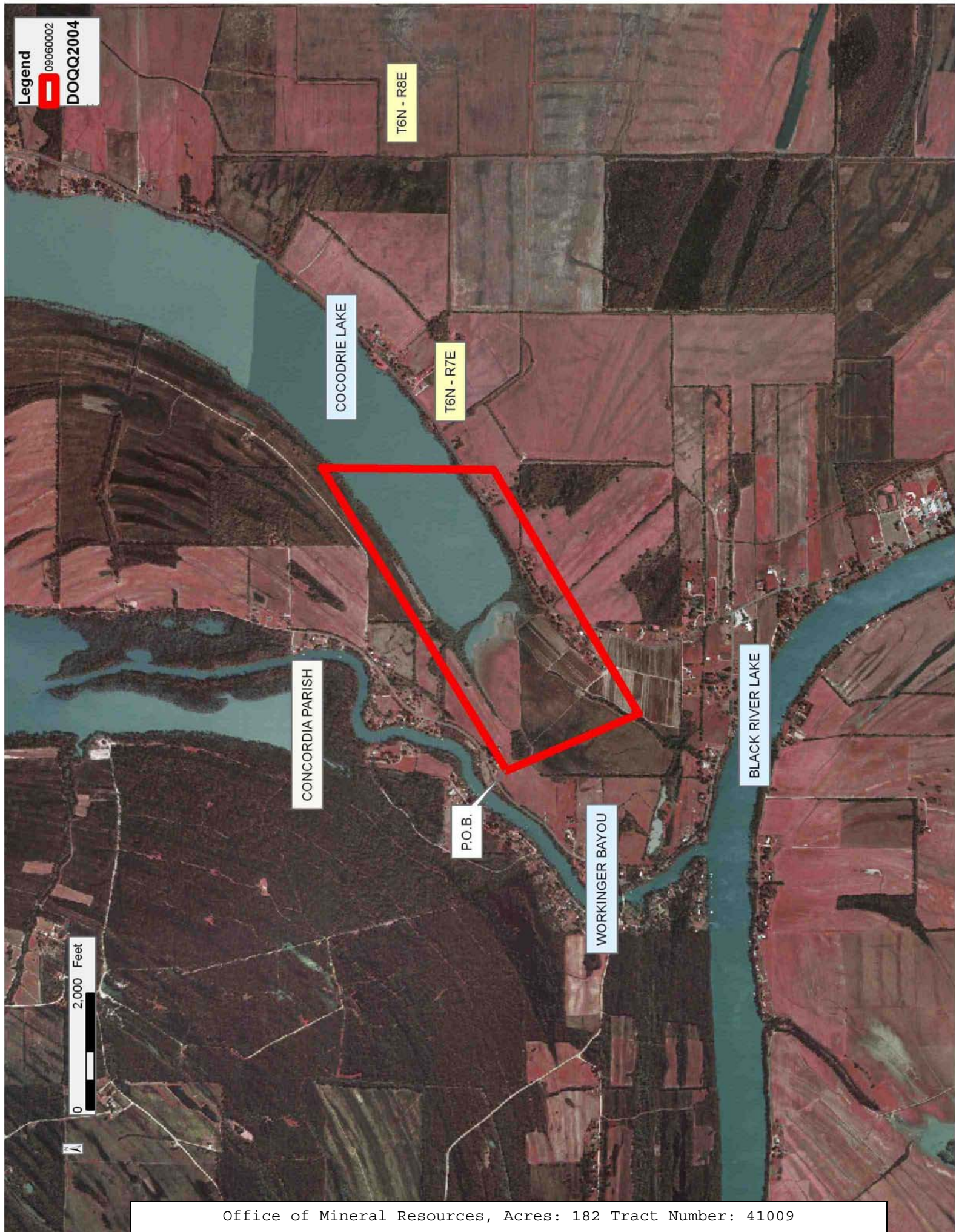
**TRACT 41009 - Concordia Parish, Louisiana**

All of the lands now or formerly constituting the beds and bottoms of all water bodies of every nature and description as to which title is vested in the State of Louisiana, together with all islands arising therein and other lands formed by accretion or by reliction, where allowed by law, excepting tax adjudicated lands, and not presently under mineral lease on June 10, 2009, situated in Concordia Parish, Louisiana, and more particularly described as follows: Beginning at a point having Coordinates of X = 2,238,555.82 and Y = 295,874.68; thence North 57 degrees 57 minutes 24 seconds East 6,101.90 feet to a point having Coordinates of X = 2,243,728.08 and Y = 299,112.11; thence South 2,955.91 feet to a point having Coordinates of X = 2,243,728.08 and Y = 296,156.19; thence South 58 degrees 41 minutes 35 seconds West 4,875.93 feet to a point having Coordinates of X = 2,239,562.10 and Y = 293,622.55; thence North 24 degrees 04 minutes 32 seconds West 2,466.71 feet to the Point of Beginning, containing approximately **182 acres**, all as more particularly outlined on a plat on file in the Office of Mineral Resources, Department of Natural Resources. All bearings, distances and coordinates are based on Louisiana Coordinate System of 1927, (North or South Zone), where applicable.

NOTE: The above description of the Tract nominated for lease has been provided and corrected, where required, exclusively by the nomination party. Any mineral lease selected from this Tract and awarded by the Louisiana State Mineral Board shall be without warranty of any kind, either express, implied, or statutory, including, but not limited to, the implied warranties of merchantability and fitness for a particular purpose. Should the mineral lease awarded by the Louisiana State Mineral Board be subsequently modified, cancelled or abrogated due to the existence of conflicting leases, operating agreements, private claims or other future obligations or conditions which may affect all or any portion of the leased Tract, it shall not relieve the Lessee of the obligation to pay any bonus due thereon to the Louisiana State Mineral Board, nor shall the Louisiana State Mineral Board be obligated to refund any consideration paid by the Lessor prior to such modification, cancellation, or abrogation, including, but not limited to, bonuses, rentals and royalties.

Bidder	Cash Payment	Price/ Acre	Rental	Oil	Gas	Other

Applicant: LESLIE M. COOPER



**TRACT 41010 - Plaquemines Parish, Louisiana**

All of the lands now or formerly constituting the beds and bottoms of all water bodies of every nature and description as to which title is vested in the State of Louisiana, together with all islands arising therein and other lands formed by accretion or by reliction, where allowed by law, excepting tax adjudicated lands, and not presently under mineral lease on June 10, 2009, situated in Plaquemines Parish, Louisiana, and more particularly described as follows: Beginning at a point on the East boundary of State Lease No. 20026 having Coordinates of X = 2,609,751.88 and Y = 204,780.00; thence East 10,559.32 feet to a point having Coordinates of X = 2,620,311.20 and Y = 204,780.00; thence South 379.30 feet to the Northwest corner of State Lease No. 16628, as amended, having Coordinates of X = 2,620,311.20 and Y = 204,400.70; thence South 01 degrees 43 minutes 52 seconds East 5,280.01 feet along the West boundary of said State Lease No. 16628 to its Southwest corner having Coordinates of X = 2,620,470.70 and Y = 199,123.10; thence West 10,643.96 feet to a point on the East boundary of said State Lease No. 20026 having Coordinates of X = 2,609,826.74 and Y = 199,123.10; thence North 2,481.43 feet along the East boundary of said State Lease No. 20026 to the Southeast corner of State Lease No. 17344 having Coordinates of X = 2,609,826.74 and Y = 201,604.53; thence North 01 degrees 43 minutes 52 seconds West 2,478.18 feet along the East boundary of said State Lease No. 17344 to its Northeast corner, also being a point on the East boundary of said State Lease No. 20026 having Coordinates of X = 2,609,751.88 and Y = 204,081.58; thence North 698.42 feet along the East boundary of said State Lease No. 20026 to the point of beginning, containing approximately **170 acres**, all as more particularly outlined on a plat on file in the Office of Mineral Resources, Department of Natural Resources. All bearings, distances and coordinates are based on Louisiana Coordinate System of 1927, (North or South Zone), where applicable.

NOTE: The above description of the Tract nominated for lease has been provided and corrected, where required, exclusively by the nomination party. Any mineral lease selected from this Tract and awarded by the Louisiana State Mineral Board shall be without warranty of any kind, either express, implied, or statutory, including, but not limited to, the implied warranties of merchantability and fitness for a particular purpose. Should the mineral lease awarded by the Louisiana State Mineral Board be subsequently modified, cancelled or abrogated due to the existence of conflicting leases, operating agreements, private claims or other future obligations or conditions which may affect all or any portion of the leased Tract, it shall not relieve the Lessee of the obligation to pay any bonus due thereon to the Louisiana State Mineral Board, nor shall the Louisiana State Mineral Board be obligated to refund any consideration paid by the Lessor prior to such modification, cancellation, or abrogation, including, but not limited to, bonuses, rentals and royalties.

NOTE: The State of Louisiana does hereby reserve, and this lease shall be subject to, the imprescriptible right of surface use in the nature of a

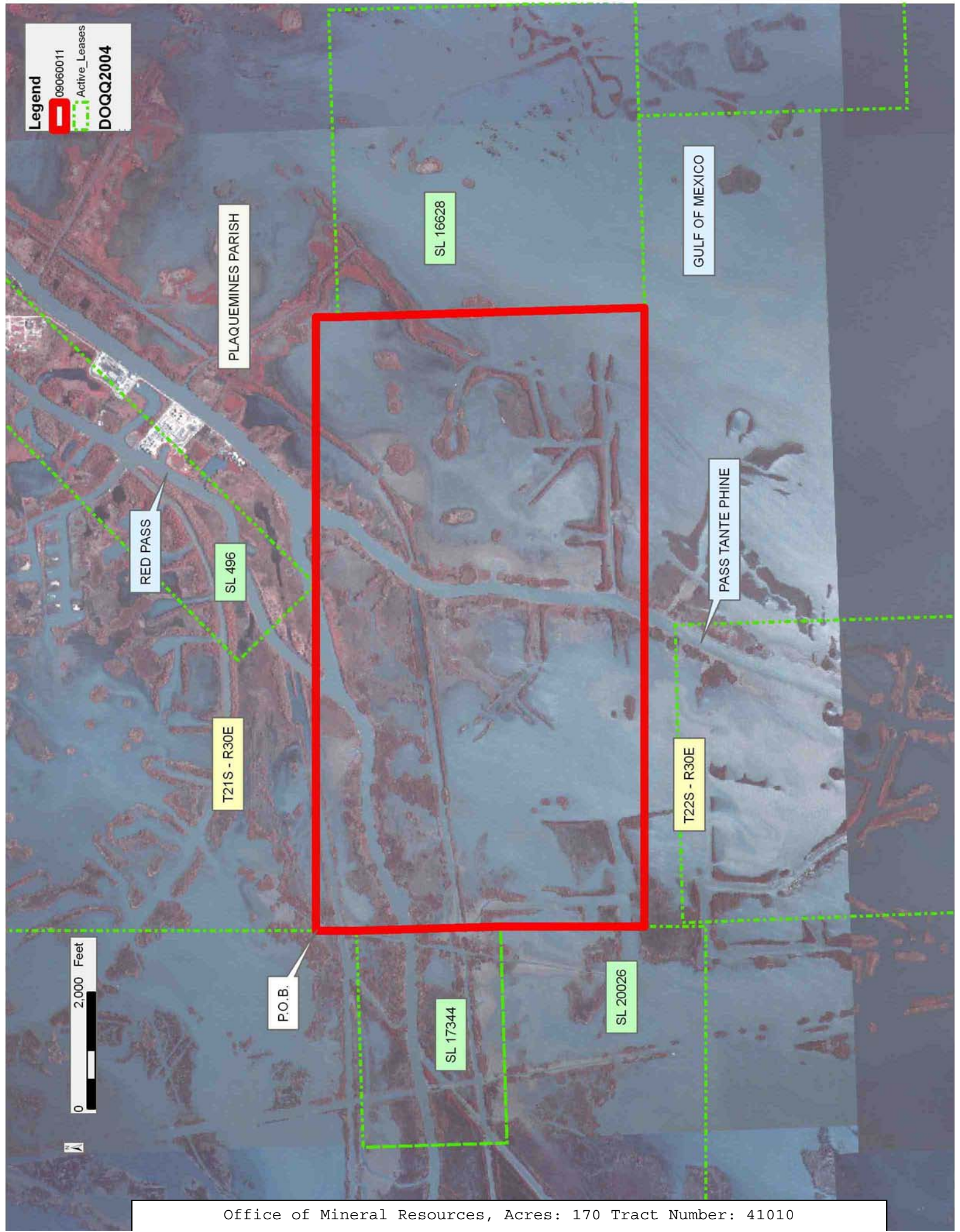
servitude in favor of the Department of Natural Resources, including its Offices and Commissions, for the sole purpose of implementing, constructing, servicing and maintaining approved coastal zone management and/or restoration projects. Utilization of any and all rights derived under this lease by the mineral lessee, its agents, successors or assigns, shall not interfere with nor hinder the reasonable surface use by the Department of Natural Resources, its Offices or Commissions, as herein above reserved.

NOTE: The Department of Wildlife and Fisheries has designated certain areas in the coastal waters of the State of Louisiana as Oyster Seed Bed Areas. The exact location of those Seed Bed Areas must be obtained from the Department of Wildlife and Fisheries and any work done under a mineral lease from the State of Louisiana may necessarily be conducted in conformity with the rules and regulations promulgated by the said Department of Wildlife and Fisheries for Oyster Seed Bed Areas.

Applicant: THEOPHILUS OIL, GAS & LAND SERVICES, LLC

Bidder	Cash Payment	Price/ Acre	Rental	Oil	Gas	Other

**Legend**  
09060011  
Active\_Leases  
DOQQ2004



**TRACT 41011 - Plaquemines Parish, Louisiana**

All of the lands now or formerly constituting the beds and bottoms of all water bodies of every nature and description as to which title is vested in the State of Louisiana, together with all islands arising therein and other lands formed by accretion or by reliction, where allowed by law, excepting tax adjudicated lands, and not presently under mineral lease on June 10, 2009, situated in Plaquemines Parish, Louisiana, and more particularly described as follows: Beginning at a point having Coordinates of X = 2,615,009.87 and Y = 199,123.10; thence East 5,460.83 feet to the Southwest corner of State Lease No. 16628, as amended, having Coordinates of X = 2,620,470.70 and Y = 199,123.10; thence North 88 degrees 16 minutes 08 seconds East 3,300.03 feet along the South boundary of said State Lease No. 16628 to the Northwest corner of State Lease No. 15918, as amended, having Coordinates of X = 2,623,769.22 and Y = 199,222.79; thence along the boundary of said State Lease No. 15918 the following courses: South 01 degrees 42 minutes 53 seconds East 4,620.00 feet to a corner having Coordinates of X = 2,623,907.47 and Y = 194,604.86 and North 88 degrees 16 minutes 08 seconds East 2,160.82 feet to a point having Coordinates of X = 2,626,067.30 and Y = 194,670.13; thence Southerly approximately 5,948 feet to a Northeast corner of State Lease No. 2203, as amended; thence along the boundary of said State Lease No. 2203 the following courses: Westerly approximately 2,643 feet to a corner; Northerly approximately 2,642 feet to a corner; Westerly approximately 2,643 feet to a corner; Northerly approximately 2,270 feet to a corner and Westerly approximately 5,475 feet to a point on its Northern boundary; thence Northerly approximately 316 feet to a point of intersection with the Southern boundary or a projection thereof of Operating Agreement AO 0021; thence along the boundary of said Operating Agreement AO 0021 the following courses: Easterly approximately 199 feet; Northerly approximately 5,301 feet and Westerly approximately 231 feet to a point on its Northern boundary; thence Northerly approximately 131 feet to the point of beginning, **LESS AND EXCEPT** any portion of State Lease No. 2203, as amended and Operating Agreement AO 0021 that may lie within the above described tract, containing approximately **1,500 acres**, all as more particularly outlined on a plat on file in the Office of Mineral Resources, Department of Natural Resources. All bearings, distances and coordinates are based on Louisiana Coordinate System of 1927, (North or South Zone), where applicable.

NOTE: The above description of the Tract nominated for lease has been provided and corrected, where required, exclusively by the nomination party. Any mineral lease selected from this Tract and awarded by the Louisiana State Mineral Board shall be without warranty of any kind, either express, implied, or statutory, including, but not limited to, the implied warranties of merchantability and fitness for a particular purpose. Should the mineral lease awarded by the Louisiana State Mineral Board be subsequently modified, cancelled or abrogated due to the existence of conflicting leases, operating agreements, private claims or other future obligations or conditions which may affect all or any portion of the leased Tract, it shall not relieve the Lessee of the obligation to

pay any bonus due thereon to the Louisiana State Mineral Board, nor shall the Louisiana State Mineral Board be obligated to refund any consideration paid by the Lessor prior to such modification, cancellation, or abrogation, including, but not limited to, bonuses, rentals and royalties.

NOTE: The State of Louisiana does hereby reserve, and this lease shall be subject to, the imprescriptible right of surface use in the nature of a servitude in favor of the Department of Natural Resources, including its Offices and Commissions, for the sole purpose of implementing, constructing, servicing and maintaining approved coastal zone management and/or restoration projects. Utilization of any and all rights derived under this lease by the mineral lessee, its agents, successors or assigns, shall not interfere with nor hinder the reasonable surface use by the Department of Natural Resources, its Offices or Commissions, as herein above reserved.

NOTE: The Department of Wildlife and Fisheries has designated certain areas in the coastal waters of the State of Louisiana as Oyster Seed Bed Areas. The exact location of those Seed Bed Areas must be obtained from the Department of Wildlife and Fisheries and any work done under a mineral lease from the State of Louisiana may necessarily be conducted in conformity with the rules and regulations promulgated by the said Department of Wildlife and Fisheries for Oyster Seed Bed Areas.

Applicant: THEOPHILUS OIL GAS & LAND SERVICES LLC

Bidder	Cash Payment	Price/ Acre	Rental	Oil	Gas	Other

Legend

09060012

Active\_Leases

DOQQ2004

PLAQUEMINES PARISH

GULF OF MEXICO

0 2,000 Feet

P.O.B.

AO 0021

T22S - R31E

T22S - R30E

SL 16628

SL 15918

SL 2203

#### **TRACT 41012 - Plaquemines Parish, Louisiana**

All of the lands now or formerly constituting the beds and bottoms of all water bodies of every nature and description as to which title is vested in the State of Louisiana, together with all islands arising therein and other lands formed by accretion or by reliction, where allowed by law, excepting tax adjudicated lands, and not presently under mineral lease on June 10, 2009, situated in Plaquemines Parish, Louisiana, and more particularly described as follows: Beginning at the Northeast corner of State Lease No. 17382 having Coordinates of X = 2,633,704.22 and Y = 198,201.69; thence East 8,958.99 feet to a point having Coordinates of X = 2,642,663.21 and Y = 198,201.69; thence South approximately 14,565 feet to a point on the North boundary or a projection thereof of State Lease No. 451 having a Coordinate of X = 2,642,663.21; thence Westerly approximately 7,202 feet along the North boundary or a projection thereof of State Lease No. 451 to its point of intersection with the East boundary or a projection thereof of State Lease No. 19917; thence North 01 degrees 59 minutes 56 seconds West approximately 1,510 feet along the East boundary or a projection thereof of said State Lease No. 19917 to its Easternmost Northeast corner having Coordinates of X = 2,635,417.10 and Y = 185,063.70; thence North 7,860.35 feet to a point having Coordinates of X = 2,635,417.10 and Y = 192,924.05; thence West 1,554.89 feet to the Southeast corner of said State Lease No. 17382 having Coordinates of X = 2,633,862.21 and Y = 192,924.05; thence North 01 degrees 42 minutes 53 seconds West 5,280.00 feet along the East boundary of said State Lease No. 17382 to the point of beginning, **LESS AND EXCEPT** any portion of State Lease No. 451 and State Lease No. 19917 that may lie within the above described tract, containing approximately **2,492 acres**, all as more particularly outlined on a plat on file in the Office of Mineral Resources, Department of Natural Resources. All bearings, distances and coordinates are based on Louisiana Coordinate System of 1927, (North or South Zone), where applicable.

NOTE: The above description of the Tract nominated for lease has been provided and corrected, where required, exclusively by the nomination party. Any mineral lease selected from this Tract and awarded by the Louisiana State Mineral Board shall be without warranty of any kind, either express, implied, or statutory, including, but not limited to, the implied warranties of merchantability and fitness for a particular purpose. Should the mineral lease awarded by the Louisiana State Mineral Board be subsequently modified, cancelled or abrogated due to the existence of conflicting leases, operating agreements, private claims or other future obligations or conditions which may affect all or any portion of the leased Tract, it shall not relieve the Lessee of the obligation to pay any bonus due thereon to the Louisiana State Mineral Board, nor shall the Louisiana State Mineral Board be obligated to refund any consideration paid by the Lessor prior to such modification, cancellation, or abrogation, including, but not limited to, bonuses, rentals and royalties.

NOTE: The State of Louisiana does hereby reserve, and this lease shall be subject to, the imprescriptible right of surface use in the nature of a servitude in favor of the Department of Natural Resources, including its Offices and Commissions, for the sole purpose of implementing, constructing, servicing and maintaining approved coastal zone management and/or restoration projects. Utilization of any and all rights derived under this lease by the mineral lessee, its agents, successors or assigns, shall not interfere with nor hinder the reasonable surface use by the Department of Natural Resources, its Offices or Commissions, as herein above reserved.

NOTE: The Department of Wildlife and Fisheries has designated certain areas in the coastal waters of the State of Louisiana as Oyster Seed Bed Areas. The exact location of those Seed Bed Areas must be obtained from the Department of Wildlife and Fisheries and any work done under a mineral lease from the State of Louisiana may necessarily be conducted in conformity with the rules and regulations promulgated by the said Department of Wildlife and Fisheries for Oyster Seed Bed Areas.

Applicant: THEOPHILUS OIL GAS & LAND SERVICES LLC

Bidder	Cash Payment	Price/ Acre	Rental	Oil	Gas	Other

Legend

09060014

Active\_Leases

DOQQ2004

PLAQUEMINES PARISH

GULF OF MEXICO

MISSISSIPPI RIVER

P.O.B.

SL 17382

T22S - R31E

SL 19917

SL 451

T22S - R30E

0 3,000 Feet

**TRACT 41013 - Plaquemines Parish, Louisiana**

All of the lands now or formerly constituting the beds and bottoms of all water bodies of every nature and description as to which title is vested in the State of Louisiana, together with all islands arising therein and other lands formed by accretion or by reliction, where allowed by law, excepting tax adjudicated lands, and not presently under mineral lease on June 10, 2009, situated in Plaquemines Parish, Louisiana, and more particularly described as follows: Beginning at a point on the South boundary of State Lease No. 15918, as amended, having Coordinates of X = 2,626,067.30 and Y = 194,670.13; thence along the South boundary of said State Lease No. 15918 the following courses: North 88 degrees 16 minutes 08 seconds East 479.18 feet to a corner having Coordinates of X = 2,626,546.26 and Y = 194,684.61, South 01 degrees 42 minutes 54 seconds East 659.98 feet to a corner having Coordinates of X = 2,626,566.01 and Y = 194,024.93 and North 88 degrees 16 minutes 10 seconds East 4,619.99 feet to its Southeast corner located on the West boundary of State Lease No. 17382 having Coordinates of X = 2,631,183.89 and Y = 194,164.45; thence along the boundary of said State Lease No. 17382 the following courses: South 01 degrees 42 minutes 53 seconds East 1,319.98 feet to a corner having Coordinates of X = 2,631,223.39 and Y = 192,845.06 and North 88 degrees 17 minutes 07 seconds East 2,640.00 feet to its Southeast corner having Coordinates of X = 2,633,862.21 and Y = 192,924.05; thence East 1,554.89 feet to a point having Coordinates of X = 2,635,417.10 and Y = 192,924.05; thence South 7,860.35 feet to the Northeast corner of State Lease No. 19917 having Coordinates of X = 2,635,417.10 and Y = 185,063.70; thence along the boundary of said State Lease No. 19917 the following courses: South 87 degrees 55 minutes 11 seconds West 1,308.56 feet to a corner having Coordinates of X = 2,634,109.40 and Y = 185,016.20, North 01 degrees 40 minutes 50 seconds West 661.49 feet to a corner having Coordinates of X = 2,634,090.00 and Y = 185,677.40, South 88 degrees 09 minutes 32 seconds West 678.55 feet to a corner having Coordinates of X = 2,633,411.80 and Y = 185,655.60, North 00 degrees 37 minutes 42 seconds West 656.44 feet to a corner having Coordinates of X = 2,633,404.60 and Y = 186,312.00, South 88 degrees 00 minutes 21 seconds West 1,339.11 feet to a corner having Coordinates of X = 2,632,066.30 and Y = 186,265.40, South 01 degrees 42 minutes 42 seconds East 2,152.68 feet to a corner having Coordinates of X = 2,632,130.60 and Y = 184,113.68, Southeasterly along an arc having a radius of 2,514.77 feet and a center having Coordinates of X = 2,631,777.24 and Y = 181,623.86 to a corner having Coordinates of X = 2,632,718.16 and Y = 183,955.97 and Southeasterly along an arc having a radius of 1,962.71 feet and a center having Coordinates of X = 2,631,846.02 and Y = 182,197.68 to its point of intersection with the North boundary of State Lease No. 451; thence Westerly approximately 4,289 feet along the North boundary of said State Lease No. 451 to the Southeast corner of State Lease No. 2203, as amended; thence along the boundary of said State Lease No. 2203 the following courses: Northerly approximately 2,755 feet to a corner, Westerly approximately 2,781 feet to a corner and Northerly approximately 2,643 feet to a Northeast corner; thence Northerly approximately 5,948 feet to the point of beginning, **LESS AND EXCEPT** any

portions of State Lease No. 451 and State Lease No. 2203, as amended that may lie within the above described tract, containing approximately **1,772 acres**, all as more particularly outlined on a plat on file in the Office of Mineral Resources, Department of Natural Resources. All bearings, distances and coordinates are based on Louisiana Coordinate System of 1927, (North or South Zone), where applicable.

NOTE: The above description of the Tract nominated for lease has been provided and corrected, where required, exclusively by the nomination party. Any mineral lease selected from this Tract and awarded by the Louisiana State Mineral Board shall be without warranty of any kind, either express, implied, or statutory, including, but not limited to, the implied warranties of merchantability and fitness for a particular purpose. Should the mineral lease awarded by the Louisiana State Mineral Board be subsequently modified, cancelled or abrogated due to the existence of conflicting leases, operating agreements, private claims or other future obligations or conditions which may affect all or any portion of the leased Tract, it shall not relieve the Lessee of the obligation to pay any bonus due thereon to the Louisiana State Mineral Board, nor shall the Louisiana State Mineral Board be obligated to refund any consideration paid by the Lessor prior to such modification, cancellation, or abrogation, including, but not limited to, bonuses, rentals and royalties.

NOTE: The State of Louisiana does hereby reserve, and this lease shall be subject to, the imprescriptible right of surface use in the nature of a servitude in favor of the Department of Natural Resources, including its Offices and Commissions, for the sole purpose of implementing, constructing, servicing and maintaining approved coastal zone management and/or restoration projects. Utilization of any and all rights derived under this lease by the mineral lessee, its agents, successors or assigns, shall not interfere with nor hinder the reasonable surface use by the Department of Natural Resources, its Offices or Commissions, as herein above reserved.

NOTE: The Department of Wildlife and Fisheries has designated certain areas in the coastal waters of the State of Louisiana as Oyster Seed Bed Areas. The exact location of those Seed Bed Areas must be obtained from the Department of Wildlife and Fisheries and any work done under a mineral lease from the State of Louisiana may necessarily be conducted in conformity with the rules and regulations promulgated by the said Department of Wildlife and Fisheries for Oyster Seed Bed Areas.

Applicant: THEOPHILUS OIL GAS & LAND SERVICES LLC

Bidder	Cash Payment	Price/ Acre	Rental	Oil	Gas	Other

**Legend**  
09060013  
Active\_Leases

