

TRACT 39902 - Terrebonne Parish, Louisiana

All of the lands now or formerly constituting the beds and bottoms of all water bodies of every nature and description as to which title is vested in the State of Louisiana, together with all islands arising therein and other lands formed by accretion or by reliction, where allowed by law, excepting tax adjudicated lands, and not presently under mineral lease on June 11, 2008, situated in Terrebonne Parish, Louisiana, and more particularly described as follows: Beginning at a Point having Coordinates of X = 2,235,896.31 and Y = 289,069.32; thence North 88 degrees 53 minutes 19 seconds East 10,709.06 feet to a point having Coordinates of X = 2,246,603.36 and Y = 289,277.03; thence South 13 degrees 36 minutes 33 seconds West 10,911.91 feet to a point having Coordinates of X = 2,244,035.79 and Y = 278,671.50; thence South 00 degrees 17 minutes 02 seconds East 1,322.55 feet to a point having Coordinates of X = 2,244,042.35 and Y = 277,348.97; thence South 89 degrees 42 minutes 58 seconds West 8,087.88 feet to a point having Coordinates of X = 2,235,954.57 and Y = 277,308.91; thence North 00 degrees 17 minutes 02 seconds West 11,760.55 feet to the point of beginning, **LESS AND EXCEPT** that portion, if any, that lies within the boundary of State Lease No. 328, containing approximately **72 acres**, all as more particularly outlined on a plat on file in the Office of Mineral Resources, Department of Natural Resources. All bearings, distances and coordinates are based on Louisiana Coordinate System of 1927, (North or South Zone), where applicable.

NOTE: The above description of the Tract nominated for lease has been provided and corrected, where required, exclusively by the nomination party. Any mineral lease selected from this Tract and awarded by the Louisiana State Mineral Board shall be without warranty of any kind, either express, implied, or statutory, including, but not limited to, the implied warranties of merchantability and fitness for a particular purpose. Should the mineral lease awarded by the Louisiana State Mineral Board be subsequently modified, cancelled or abrogated due to the existence of conflicting leases, operating agreements, private claims or other future obligations or conditions which may affect all or any portion of the leased Tract, it shall not relieve the Lessee of the obligation to pay any bonus due thereon to the Louisiana State Mineral Board, nor shall the Louisiana State Mineral Board be obligated to refund any consideration paid by the Lessor prior to such modification, cancellation, or abrogation, including, but not limited to, bonuses, rentals and royalties.

NOTE: The State of Louisiana does hereby reserve, and this lease shall be subject to, the imprescriptible right of surface use in the nature of a servitude in favor of the Department of Natural Resources, including its Offices and Commissions, for the sole purpose of implementing, constructing, servicing and maintaining approved coastal zone management and/or restoration projects. Utilization of any and all rights derived under this lease by the mineral lessee, its agents, successors or assigns, shall not interfere with nor hinder the reasonable surface use by the

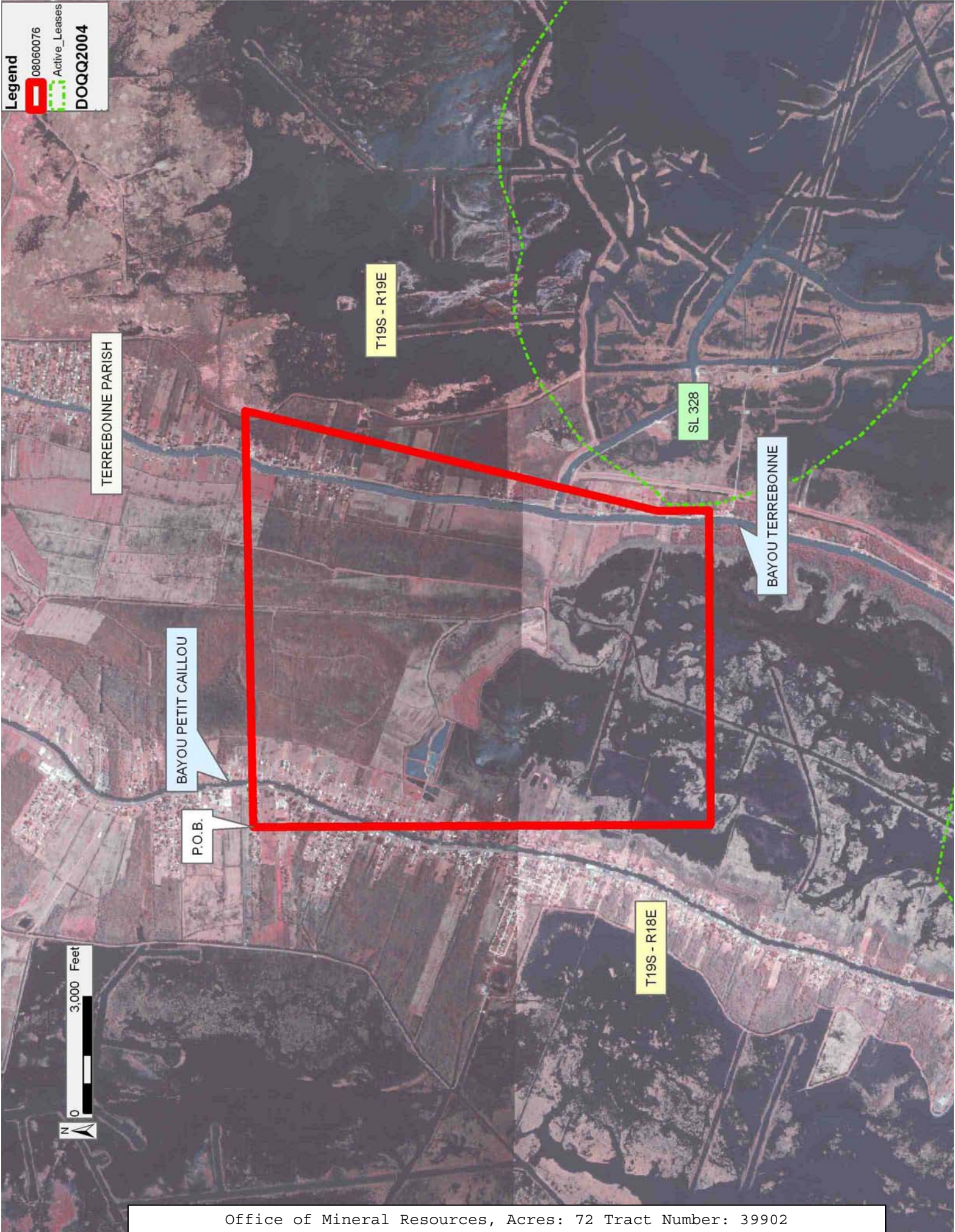
Department of Natural Resources, its Offices or Commissions, as herein above reserved.

NOTE: The Department of Wildlife and Fisheries has designated certain areas in the coastal waters of the State of Louisiana as Oyster Seed Bed Areas. The exact location of those Seed Bed Areas must be obtained from the Department of Wildlife and Fisheries and any work done under a mineral lease from the State of Louisiana may necessarily be conducted in conformity with the rules and regulations promulgated by the said Department of Wildlife and Fisheries for Oyster Seed Bed Areas.

Applicant: STARKS OIL CORPORATION

Bidder	Cash Payment	Price/Acre	Rental	Oil	Gas	Other

Legend
08060076
Active_Leases
DOQQ2004



TRACT 39903 - Lafourche and Terrebonne Parishes, Louisiana

All of the lands now or formerly constituting the beds and bottoms of all water bodies of every nature and description as to which title is vested in the State of Louisiana, together with all islands arising therein and other lands formed by accretion or by reliction, where allowed by law, excepting tax adjudicated lands, and not presently under mineral lease on June 11, 2008, situated in Lafourche and Terrebonne Parishes, Louisiana, and more particularly described as follows: Being the Northeast quarter of the Northeast quarter of Section 7, Township 19 South, Range 20 East, **LESS AND EXCEPT** that portion, if any, that lies within the Pointe Aux Chenes State Wildlife Management Area, containing approximately **3 acres**, all as more particularly outlined on a plat on file in the Office of Mineral Resources, Department of Natural Resources. All bearings, distances and coordinates are based on Louisiana Coordinate System of 1927, (North or South Zone), where applicable.

NOTE: The above description of the Tract nominated for lease has been provided and corrected, where required, exclusively by the nomination party. Any mineral lease selected from this Tract and awarded by the Louisiana State Mineral Board shall be without warranty of any kind, either express, implied, or statutory, including, but not limited to, the implied warranties of merchantability and fitness for a particular purpose. Should the mineral lease awarded by the Louisiana State Mineral Board be subsequently modified, cancelled or abrogated due to the existence of conflicting leases, operating agreements, private claims or other future obligations or conditions which may affect all or any portion of the leased Tract, it shall not relieve the Lessee of the obligation to pay any bonus due thereon to the Louisiana State Mineral Board, nor shall the Louisiana State Mineral Board be obligated to refund any consideration paid by the Lessor prior to such modification, cancellation, or abrogation, including, but not limited to, bonuses, rentals and royalties.

NOTE: The State of Louisiana does hereby reserve, and this lease shall be subject to, the imprescriptible right of surface use in the nature of a servitude in favor of the Department of Natural Resources, including its Offices and Commissions, for the sole purpose of implementing, constructing, servicing and maintaining approved coastal zone management and/or restoration projects. Utilization of any and all rights derived under this lease by the mineral lessee, its agents, successors or assigns, shall not interfere with nor hinder the reasonable surface use by the Department of Natural Resources, its Offices or Commissions, as herein above reserved.

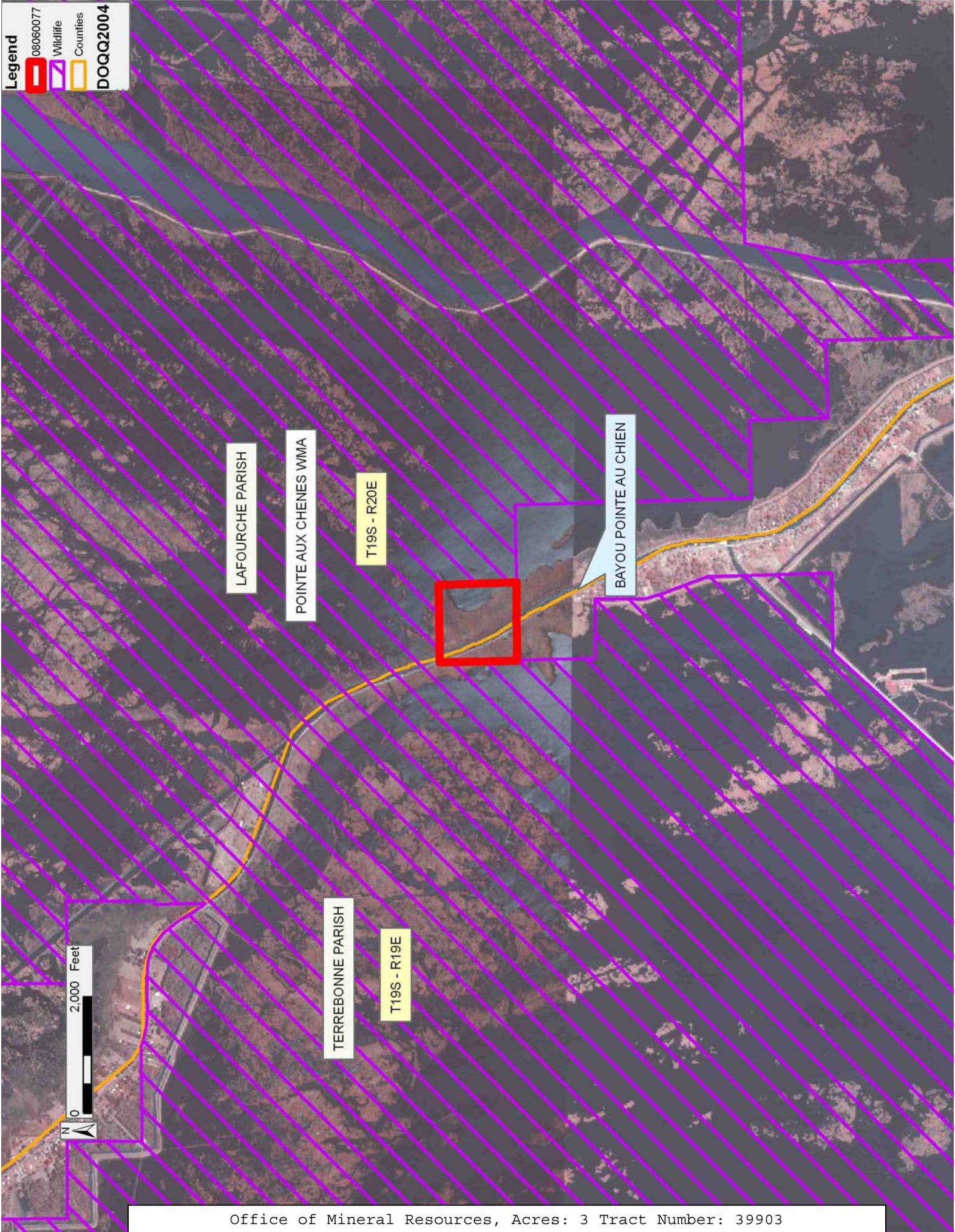
Applicant: STARKS OIL CORPORATION

Bidder	Cash Payment	Price/Acre	Rental	Oil	Gas	Other

Legend

-  08060077
-  Wildlife
-  Counties

DOQQ2004



TRACT 39904 - Lafourche and Terrebonne Parishes, Louisiana

All of the lands now or formerly constituting the beds and bottoms of all water bodies of every nature and description as to which title is vested in the State of Louisiana, together with all islands arising therein and other lands formed by accretion or by reliction, where allowed by law, excepting tax adjudicated lands, and not presently under mineral lease on June 11, 2008, situated in Lafourche and Terrebonne Parishes, Louisiana, and more particularly described as follows: Beginning at a Point having Coordinates of X = 2,279,063.59 and Y = 266,097.00; thence South 88 degrees 57 minutes 04 seconds West 17,000.08 feet to a point having Coordinates of X = 2,262,066.36 and Y = 265,785.82; thence North 01 degrees 25 minutes 34 seconds West approximately 13,300 feet to a point on the boundary of Pointe Aux Chenes State Wildlife Management Area; thence Easterly, Southeasterly, Northeasterly, Southeasterly, Easterly, Southerly, Northeasterly, Easterly, Northerly, Easterly, and Southerly, along the said boundary of Pointe Aux Chenes State Wildlife Management Area, to a point that intersects a line that bear North 01 degrees 12 minutes 37 seconds East from a coordinate X = 2,279,063.59 and Y = 274,066.73; thence South 01 degrees 12 minutes 37 seconds West approximately 5,397 feet to the Northeast corner of State Lease No. 18223, having Coordinates of X = 2,279,063.59 and Y = 274,066.73; thence South 88 degrees 34 minutes 18 seconds West 4,373.65 feet to the Northwest corner of said State Lease No. 18223, having Coordinates of X = 2,274,691.30 and Y = 273,957.71; thence South 01 degrees 49 minutes 13 seconds East 3,374.49 feet to the Southwest corner of said State Lease No. 18223, having Coordinates of X = 2,274,798.49 and Y = 270,584.92; thence North 88 degrees 36 minutes 49 seconds East 4,266.35 feet along the Southern boundary of said State Lease No. 18223 to its Southeast corner, having Coordinates of X = 2,279,063.59 and Y = 270,688.15; thence South 4,591.15 feet to the point of beginning, **LESS AND EXCEPT** that portion, if any, that lies within the Pointe Aux Chenes State Wildlife Management Area, containing approximately **21 acres**, all as more particularly outlined on a plat on file in the Office of Mineral Resources, Department of Natural Resources. All bearings, distances and coordinates are based on Louisiana Coordinate System of 1927, (North or South Zone), where applicable.

NOTE: The above description of the Tract nominated for lease has been provided and corrected, where required, exclusively by the nomination party. Any mineral lease selected from this Tract and awarded by the Louisiana State Mineral Board shall be without warranty of any kind, either express, implied, or statutory, including, but not limited to, the implied warranties of merchantability and fitness for a particular purpose. Should the mineral lease awarded by the Louisiana State Mineral Board be subsequently modified, cancelled or abrogated due to the existence of conflicting leases, operating agreements, private claims or other future obligations or conditions which may affect all or any portion of the leased Tract, it shall not relieve the Lessee of the obligation to pay any bonus due thereon to the Louisiana State Mineral Board, nor shall the Louisiana State Mineral Board be obligated to refund any consideration

paid by the Lessor prior to such modification, cancellation, or abrogation, including, but not limited to, bonuses, rentals and royalties.

NOTE: The State of Louisiana does hereby reserve, and this lease shall be subject to, the imprescriptible right of surface use in the nature of a servitude in favor of the Department of Natural Resources, including its Offices and Commissions, for the sole purpose of implementing, constructing, servicing and maintaining approved coastal zone management and/or restoration projects. Utilization of any and all rights derived under this lease by the mineral lessee, its agents, successors or assigns, shall not interfere with nor hinder the reasonable surface use by the Department of Natural Resources, its Offices or Commissions, as herein above reserved.

Applicant: STARKS OIL CORPORATION

Bidder	Cash Payment	Price/Acre	Rental	Oil	Gas	Other

Legend

- 08060072
- Wildlife
- Active_Leases
- Counties

DOQQ2004

LAFOURCHE PARISH

T19S - R20E

TERREBONNE PARISH

POINTE AUX CHENES WMA

T19S - R19E

BAYOU JEAN LACROIX

P.O.B.

SL 18223

BAYOU ST JEAN CHARLES



TRACT 39905 - Portion of Block 50, Main Pass Area, Revised, Plaquemines Parish, Louisiana

All of the lands now or formerly constituting the beds and bottoms of all water bodies of every nature and description as to which title is vested in the State of Louisiana, together with all islands arising therein and other lands formed by accretion or by reliction, where allowed by law, excepting tax adjudicated lands, and not presently under mineral lease on June 11, 2008, situated in Plaquemines Parish, Louisiana, and more particularly described as follows: Beginning at a point on the East line of Block 50, Main Pass Area, Revised, having Coordinates of X = 2,620,600.00 and Y = 271,480.00; thence West 3,141.88 feet to a point on the Eastern boundary of State Lease No. 18869 having Coordinates of X = 2,617,458.12 and Y = 271,480.00; thence along the boundary of said State Lease No. 18869 the following courses: North 18 degrees 43 minutes 16 seconds East 781.52 feet to a point having Coordinates of X = 2,617,708.96 and Y = 272,220.17; North 62 degrees 21 minutes 31 seconds West 7,478.93 feet to a point having Coordinates of X = 2,611,083.61 and Y = 275,689.92 and South 31 degrees 34 minutes 27 seconds West 3,160.67 feet to a point having Coordinates of X = 2,609,428.68 and Y = 272,997.14; thence West 3,578.68 feet to a point on the West line of said Block 50 having Coordinates of X = 2,605,850.00 and Y = 272,997.14; thence North 5,082.86 feet along the West line of said Block 50 to its Northwest corner having Coordinates of X = 2,605,850.00 and Y = 278,080.00; thence East 14,750.00 feet along the North line of said Block 50 to its Northeast corner, also being the Northwest corner of State Lease No. 19001 having Coordinates of X = 2,620,600.00 and Y = 278,080.00; thence South 3,243.00 feet along the West boundary of said State Lease No. 19001 to its Southwest corner, also being a point on the East line of said Block 50 having Coordinates of X = 2,620,600.00 and Y = 274,837.00; thence South 3,357.00 feet along the said East line of said Block 50 to the point of beginning, containing approximately **1,627.10 acres**, all as more particularly outlined on a plat on file in the Office of Mineral Resources, Department of Natural Resources. All bearings, distances and coordinates are based on Louisiana Coordinate System of 1927, (North or South Zone), where applicable.

NOTE: The above description of the Tract nominated for lease has been provided and corrected, where required, exclusively by the nomination party. Any mineral lease selected from this Tract and awarded by the Louisiana State Mineral Board shall be without warranty of any kind, either express, implied, or statutory, including, but not limited to, the implied warranties of merchantability and fitness for a particular purpose. Should the mineral lease awarded by the Louisiana State Mineral Board be subsequently modified, cancelled or abrogated due to the existence of conflicting leases, operating agreements, private claims or other future obligations or conditions which may affect all or any portion of the leased Tract, it shall not relieve the Lessee of the obligation to pay any bonus due thereon to the Louisiana State Mineral Board, nor shall the Louisiana State Mineral Board be obligated to refund any consideration

paid by the Lessor prior to such modification, cancellation, or abrogation, including, but not limited to, bonuses, rentals and royalties.




NOTE: The State of Louisiana does hereby reserve, and this lease shall be subject to, the imprescriptible right of surface use in the nature of a servitude in favor of the Department of Natural Resources, including its Offices and Commissions, for the sole purpose of implementing, constructing, servicing and maintaining approved coastal zone management and/or restoration projects. Utilization of any and all rights derived under this lease by the mineral lessee, its agents, successors or assigns, shall not interfere with nor hinder the reasonable surface use by the Department of Natural Resources, its Offices or Commissions, as herein above reserved.

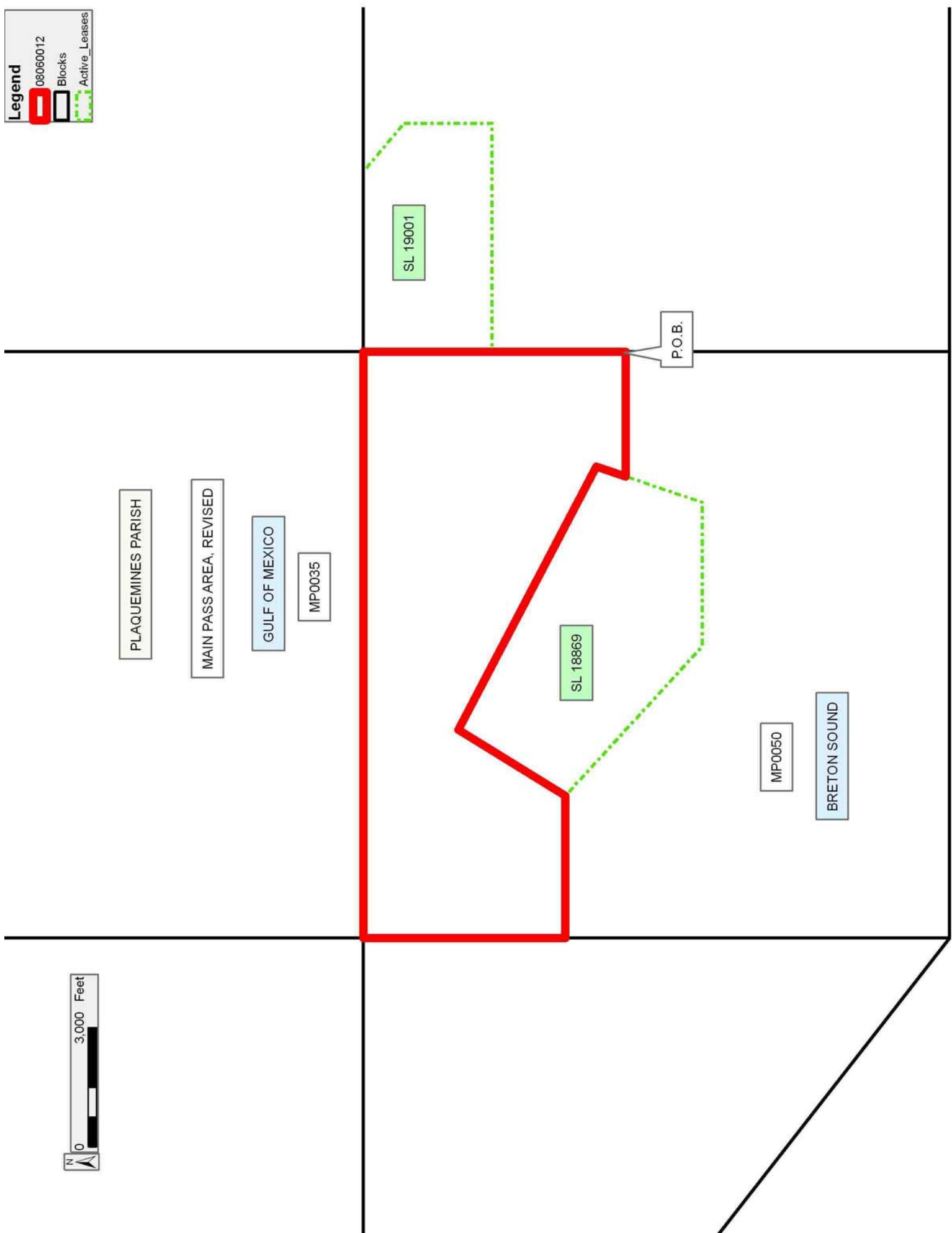
NOTE: The Department of Wildlife and Fisheries has designated certain areas in the coastal waters of the State of Louisiana as Oyster Seed Bed Areas. The exact location of those Seed Bed Areas must be obtained from the Department of Wildlife and Fisheries and any work done under a mineral lease from the State of Louisiana may necessarily be conducted in conformity with the rules and regulations promulgated by the said Department of Wildlife and Fisheries for Oyster Seed Bed Areas.

Applicant: BRACKET OIL & GAS

Bidder	Cash Payment	Price/Acre	Rental	Oil	Gas	Other

Legend

-  08060012
-  Blocks
-  Active_Leases



TRACT 39906 - Lafourche Parish, Louisiana

All of the lands now or formerly constituting the beds and bottoms of all water bodies of every nature and description as to which title is vested in the State of Louisiana, together with all islands arising therein and other lands formed by accretion or by reliction, where allowed by law, excepting tax adjudicated lands, and not presently under mineral lease on June 11, 2008, situated in Lafourche Parish, Louisiana, and more particularly described as follows: Beginning at the Northwest corner of State Lease No. 19531 having Coordinates of X = 2,308,894.36 and Y = 279,452.64; thence along the Western boundary of said State Lease No. 19531 the following courses: South 3,049.93 feet to a point having Coordinates of X = 2,308,894.36 and Y = 276,402.71, South 73 degrees 56 minutes 12 seconds East 899.29 feet to a point having Coordinates of X = 2,309,758.54 and Y = 276,153.88, South 35 degrees 30 minutes 54 seconds East 3,793.27 feet to a point having Coordinates of X = 2,311,962.12 and Y = 273,066.29, South 27 degrees 28 minutes 53 seconds East 3,843.46 feet to a point having Coordinates of X = 2,313,735.73 and Y = 269,656.53, South 18 degrees 56 minutes 58 seconds East 141.60 feet to a point having Coordinates of X = 2,313,781.71 and Y = 269,522.61; thence South 88 degrees 35 minutes 42 seconds West 17,067.62 feet to a point having Coordinates of X = 2,296,719.22 and Y = 269,104.12; thence North 01 degrees 03 minutes 51 seconds West approximately 10,799 feet to a point on the boundary of Pointe Aux Chenes State Wildlife Management Area; thence Easterly, Northerly and Easterly along the said boundary of Pointe Aux Chenes State Wildlife Management Area to a point of intersection with a line that bears North 01 degrees 08 minutes 49 seconds West from a point having Coordinates of X = 2,307,804.60 and Y = 279,446.33; thence South 01 degrees 08 minutes 49 seconds East approximately 1,367 feet along said line to a point having Coordinates of X = 2,307,804.60 and Y = 279,446.33; thence North 89 degrees 40 minutes 05 seconds East 1,089.77 feet to the point of beginning, **LESS AND EXCEPT** that portion of Bayou Blue, that lies within the Textularia Sand, Reservoir L, Bully Camp Field, being defined herein as the oil and gas bearing Sand encountered between the depth of 11,529 feet and 11,709 feet (induction-electric log measurement) in the Exxon Fee B-1 Well located in Section 54, Township 19 South, Range 21 East, Lafourche Parish, Louisiana, and the TP-5 Sand, Reservoir J, Bully Camp Field, being defined herein as the oil and gas bearing Sand encountered between the depth of 10,156 feet and 10,178 feet (induction-electric log measurement) in the Exxon Benquin Corporation Well No. 1 Well located in Section 55, Township 18 South, Range 21 East, Lafourche Parish, Louisiana and **LESS AND EXCEPT** that portion, if any, that lies within the Pointe Aux Chenes State Wildlife Management Area, containing approximately **261 acres**, all as more particularly outlined on a plat on file in the Office of Mineral Resources, Department of Natural Resources. All bearings, distances and coordinates are based on Louisiana Coordinate System of 1927, (North or South Zone), where applicable.

NOTE: The above description of the Tract nominated for lease has been provided and corrected, where required, exclusively by the nomination




party. Any mineral lease selected from this Tract and awarded by the Louisiana State Mineral Board shall be without warranty of any kind, either express, implied, or statutory, including, but not limited to, the implied warranties of merchantability and fitness for a particular purpose. Should the mineral lease awarded by the Louisiana State Mineral Board be subsequently modified, cancelled or abrogated due to the existence of conflicting leases, operating agreements, private claims or other future obligations or conditions which may affect all or any portion of the leased Tract, it shall not relieve the Lessee of the obligation to pay any bonus due thereon to the Louisiana State Mineral Board, nor shall the Louisiana State Mineral Board be obligated to refund any consideration paid by the Lessor prior to such modification, cancellation, or abrogation, including, but not limited to, bonuses, rentals and royalties.

NOTE: The State of Louisiana does hereby reserve, and this lease shall be subject to, the imprescriptible right of surface use in the nature of a servitude in favor of the Department of Natural Resources, including its Offices and Commissions, for the sole purpose of implementing, constructing, servicing and maintaining approved coastal zone management and/or restoration projects. Utilization of any and all rights derived under this lease by the mineral lessee, its agents, successors or assigns, shall not interfere with nor hinder the reasonable surface use by the Department of Natural Resources, its Offices or Commissions, as herein above reserved.

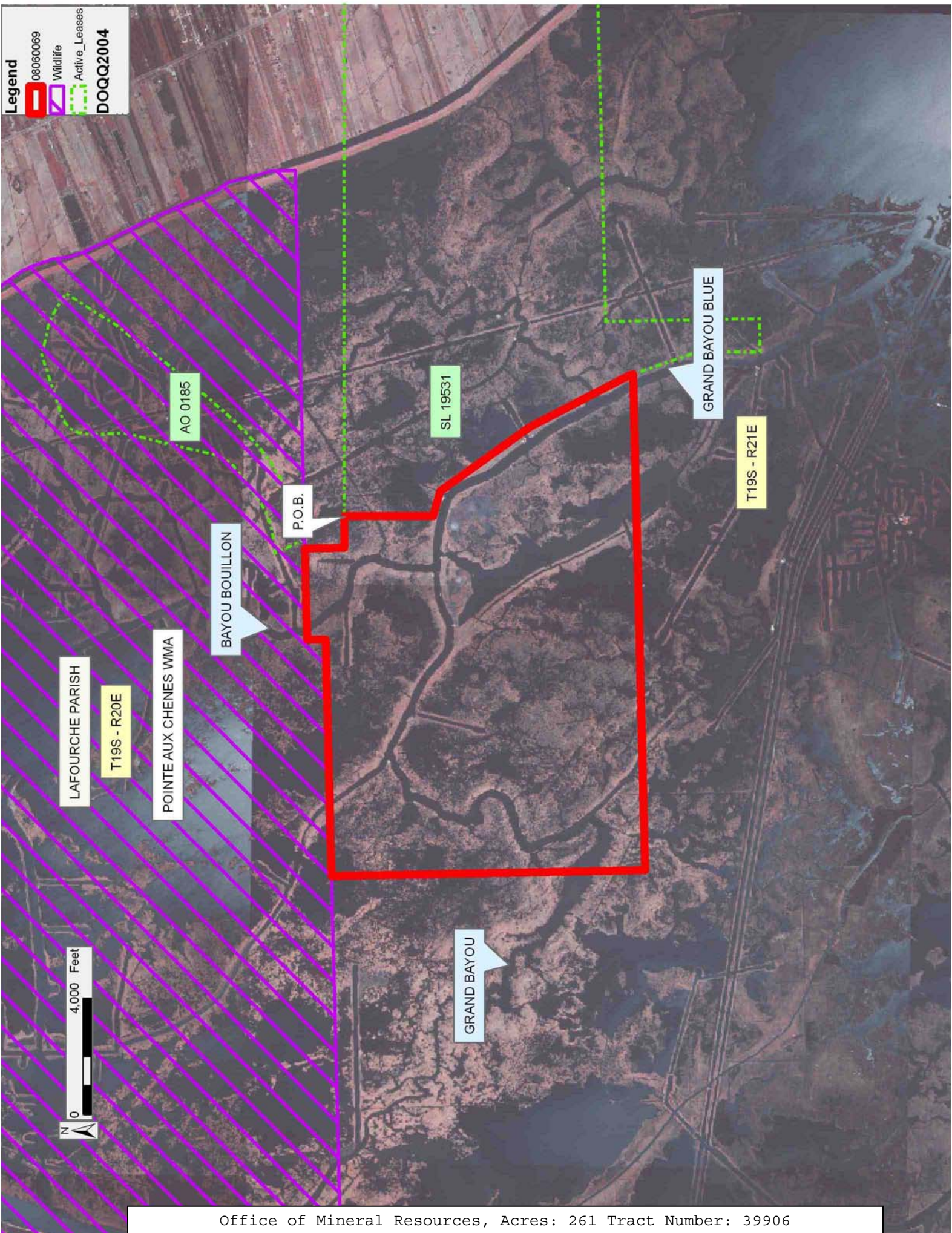
Applicant: STARKS OIL CORPORATION

Bidder	Cash Payment	Price/Acre	Rental	Oil	Gas	Other

Legend

-  08060069
-  Wildlife
-  Active_Leases

DOQQ2004



TRACT 39907 - Lafourche and Terrebonne Parishes, Louisiana

All of the lands now or formerly constituting the beds and bottoms of all water bodies of every nature and description as to which title is vested in the State of Louisiana, together with all islands arising therein and other lands formed by accretion or by reliction, where allowed by law, excepting tax adjudicated lands, and not presently under mineral lease on June 11, 2008, situated in Lafourche and Terrebonne Parishes, Louisiana, and more particularly described as follows: Beginning at a Point having Coordinates of X = 2,279,063.59 and Y = 266,097.00; thence North 4,591.15 feet to the Southeast corner of State Lease No. 18223, as amended, having Coordinates of X = 2,279,063.59 and Y = 270,688.15; thence North 3,378.58 feet along the East boundary of said State Lease No. 18223, as amended, to its Northeast corner having Coordinates of X = 2,279,063.59 and Y = 274,066.73; thence North 01 degrees 12 minutes 37 seconds East approximately 5,397 feet to a point on the boundary of Pointe Aux Chenes State Wildlife Management Area; thence Easterly, Southerly, Easterly, Southerly, Easterly, Northerly, Northeasterly, Easterly to a point that intersects a line bearing North 01 degrees 03 minutes 51 seconds West from a point having Coordinates of X = 2,296,769.05 and Y = 266,421.14; thence South 01 degrees 03 minutes 51 seconds East approximately 13,483 feet along said line to a point having Coordinates of X = 2,296,769.05 and Y = 266,421.14; thence South 88 degrees 57 minutes 04 seconds West 17,708.43 feet to the point of beginning, **LESS AND EXCEPT** that portion, if any, that lies within the Pointe Aux Chenes State Wildlife Management Area, containing approximately **139 acres**, all as more particularly outlined on a plat on file in the Office of Mineral Resources, Department of Natural Resources. All bearings, distances and coordinates are based on Louisiana Coordinate System of 1927, (North or South Zone), where applicable.

NOTE: The above description of the Tract nominated for lease has been provided and corrected, where required, exclusively by the nomination party. Any mineral lease selected from this Tract and awarded by the Louisiana State Mineral Board shall be without warranty of any kind, either express, implied, or statutory, including, but not limited to, the implied warranties of merchantability and fitness for a particular purpose. Should the mineral lease awarded by the Louisiana State Mineral Board be subsequently modified, cancelled or abrogated due to the existence of conflicting leases, operating agreements, private claims or other future obligations or conditions which may affect all or any portion of the leased Tract, it shall not relieve the Lessee of the obligation to pay any bonus due thereon to the Louisiana State Mineral Board, nor shall the Louisiana State Mineral Board be obligated to refund any consideration paid by the Lessor prior to such modification, cancellation, or abrogation, including, but not limited to, bonuses, rentals and royalties.

NOTE: The State of Louisiana does hereby reserve, and this lease shall be subject to, the imprescriptible right of surface use in the nature of a servitude in favor of the Department of Natural Resources, including its Offices and Commissions, for the sole purpose of implementing,

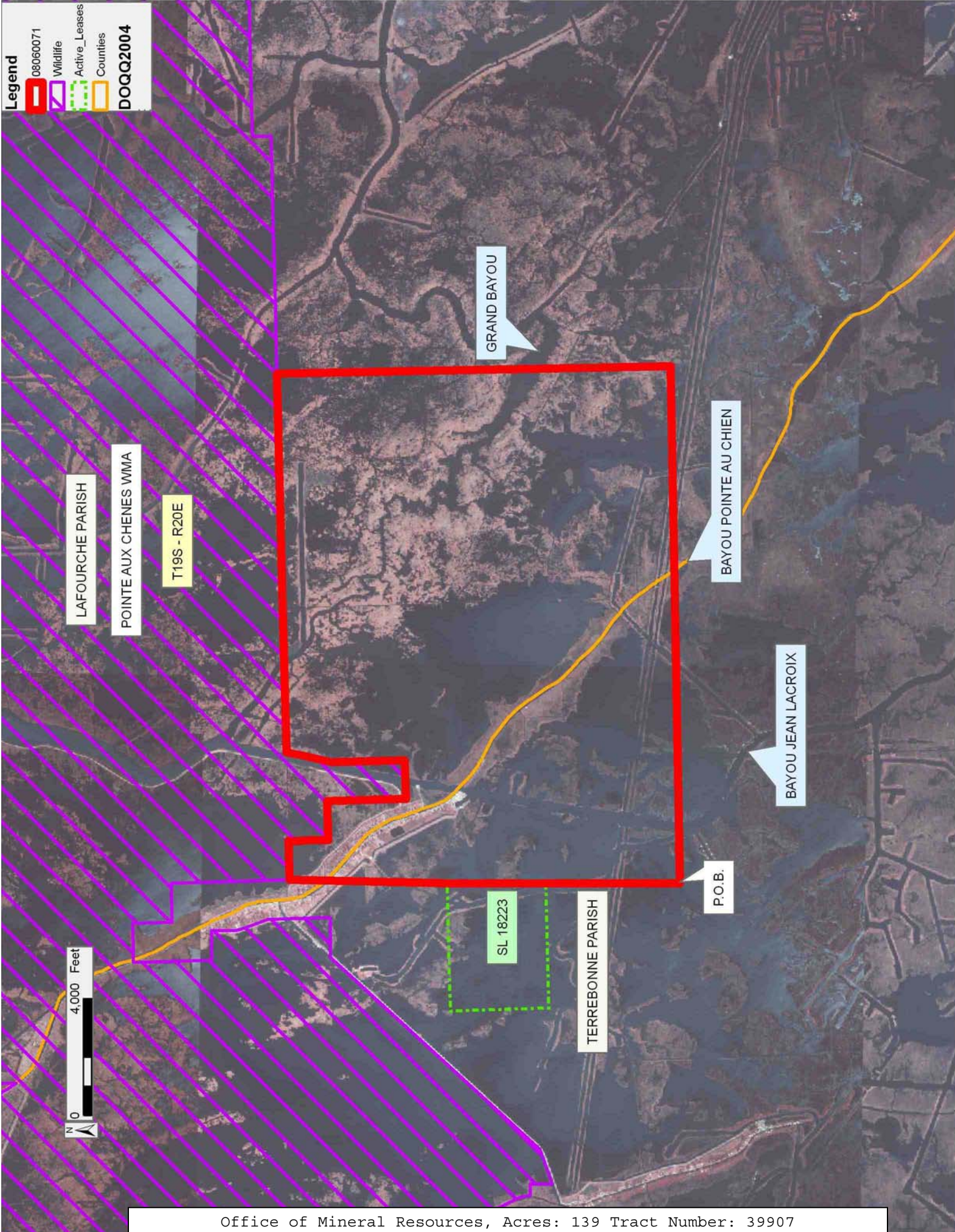
constructing, servicing and maintaining approved coastal zone management and/or restoration projects. Utilization of any and all rights derived under this lease by the mineral lessee, its agents, successors or assigns, shall not interfere with nor hinder the reasonable surface use by the Department of Natural Resources, its Offices or Commissions, as herein above reserved.

Applicant: STARKS OIL CORPORATION

Bidder	Cash Payment	Price/Acre	Rental	Oil	Gas	Other

Legend

- 08060071
- Wildlife
- Active_Leases
- Counties
- DOQQ2004



TRACT 39908 - Portion of Blocks 49, and 50, Main Pass Area, Revised, Plaquemines Parish, Louisiana

All of the lands now or formerly constituting the beds and bottoms of all water bodies of every nature and description as to which title is vested in the State of Louisiana, together with all islands arising therein and other lands formed by accretion or by reliction, where allowed by law, excepting tax adjudicated lands, and not presently under mineral lease on June 11, 2008, situated in Plaquemines Parish, Louisiana, and more particularly described as follows: Beginning at a point having Coordinates of X = 2,627,275.00 and Y = 271,480.00; thence South 7,068.49 feet to a point on the Northern boundary of the Price Case (Tract A-1) having Coordinates of X = 2,627,275.00 and Y = 264,411.51; thence along the boundary of said Price Case (Tract A-1) the following courses: North 49 degrees 30 minutes 00 seconds West 901.18 feet to a point having Coordinates of X = 2,626,589.74 and Y = 264,996.78; North 73 degrees 00 minutes 00 seconds West 500.00 feet to a point having Coordinates of X = 2,626,111.59 and Y = 265,142.97; West 515.00 feet to a point having Coordinates of X = 2,625,596.59 and Y = 265,142.97; South 72 degrees 00 minutes 00 seconds West 950.00 feet to a point having Coordinates of X = 2,624,693.08 and Y = 264,849.40; North 42 degrees 30 minutes 00 seconds West 1,500.00 feet to a point having Coordinates of X = 2,623,679.70 and Y = 265,955.32 and South 87 degrees 51 minutes 33 seconds West 6,680.00 feet to a point having Coordinates of X = 2,617,004.36 and Y = 265,705.78; thence West 200.30 feet to a point having Coordinates of X = 2,616,804.06 and Y = 265,705.78; thence North 3,844.22 feet to the Southeast corner of State Lease No. 18869 having Coordinates of X = 2,616,804.06 and Y = 269,550.00; thence North 18 degrees 43 minutes 16 seconds East 2,037.82 feet along the Eastern boundary of said State Lease No. 18869 to a point having Coordinates of X = 2,617,458.12 and Y = 271,480.00; thence East 9,816.88 feet to the point of beginning, **LESS AND EXCEPT** that portion, if any, of the Price Case that may lie within the above described tract, containing approximately **1,279 acres**, all as more particularly outlined on a plat on file in the Office of Mineral Resources, Department of Natural Resources. All bearings, distances and coordinates are based on Louisiana Coordinate System of 1927, (North or South Zone), where applicable.

NOTE: The above description of the Tract nominated for lease has been provided and corrected, where required, exclusively by the nomination party. Any mineral lease selected from this Tract and awarded by the Louisiana State Mineral Board shall be without warranty of any kind, either express, implied, or statutory, including, but not limited to, the implied warranties of merchantability and fitness for a particular purpose. Should the mineral lease awarded by the Louisiana State Mineral Board be subsequently modified, cancelled or abrogated due to the existence of conflicting leases, operating agreements, private claims or other future obligations or conditions which may affect all or any portion of the leased Tract, it shall not relieve the Lessee of the obligation to pay any bonus due thereon to the Louisiana State Mineral Board, nor shall the Louisiana State Mineral Board be obligated to refund any consideration

paid by the Lessor prior to such modification, cancellation, or abrogation, including, but not limited to, bonuses, rentals and royalties.

NOTE: The State of Louisiana does hereby reserve, and this lease shall be subject to, the imprescriptible right of surface use in the nature of a servitude in favor of the Department of Natural Resources, including its Offices and Commissions, for the sole purpose of implementing, constructing, servicing and maintaining approved coastal zone management and/or restoration projects. Utilization of any and all rights derived under this lease by the mineral lessee, its agents, successors or assigns, shall not interfere with nor hinder the reasonable surface use by the Department of Natural Resources, its Offices or Commissions, as herein above reserved.

NOTE: The Department of Wildlife and Fisheries has designated certain areas in the coastal waters of the State of Louisiana as Oyster Seed Bed Areas. The exact location of those Seed Bed Areas must be obtained from the Department of Wildlife and Fisheries and any work done under a mineral lease from the State of Louisiana may necessarily be conducted in conformity with the rules and regulations promulgated by the said Department of Wildlife and Fisheries for Oyster Seed Bed Areas.

Applicant: BRACKET OIL & GAS

Bidder	Cash Payment	Price/Acre	Rental	Oil	Gas	Other

Legend
08060011
Active_Leases
DOQQ2004

PLAQUEMINES PARISH

GULF OF MEXICO

MAIN PASS AREA, REVISED

P.O.B.

PRICE CASE

T19S - R18E



SL 18869

TRACT 39909 - Portion of Block 6, Grand Isle Area, Jefferson Parish, Louisiana

All of the lands now or formerly constituting the beds and bottoms of all water bodies of every nature and description as to which title is vested in the State of Louisiana, together with all islands arising therein and other lands formed by accretion or by reliction, where allowed by law, excepting tax adjudicated lands, and not presently under mineral lease on June 11, 2008, situated in Jefferson Parish, Louisiana, and more particularly described as follows: Beginning at a point within Block 6, Grand Isle Area, having Coordinates of X = 2,435,522.83 and Y = 208,502.22; thence East 7,379.02 feet to a point on the East line of said Block 6 having Coordinates of X = 2,442,901.85 and Y = 208,502.22; thence South 8,208.79 feet to the Southeast corner of said Block 6 having Coordinates of X = 2,442,901.85 and Y = 200,293.43; thence West 7,379.02 feet along the South line of said Block 6 to a point having Coordinates of X = 2,435,522.83 and Y = 200,293.43; thence North 8,208.79 feet to the point of beginning, containing approximately **1,390.56 acres**, all as more particularly outlined on a plat on file in the Office of Mineral Resources, Department of Natural Resources. All bearings, distances and coordinates are based on Louisiana Coordinate System of 1927, (North or South Zone), where applicable.

NOTE: The above description of the Tract nominated for lease has been provided and corrected, where required, exclusively by the nomination party. Any mineral lease selected from this Tract and awarded by the Louisiana State Mineral Board shall be without warranty of any kind, either express, implied, or statutory, including, but not limited to, the implied warranties of merchantability and fitness for a particular purpose. Should the mineral lease awarded by the Louisiana State Mineral Board be subsequently modified, cancelled or abrogated due to the existence of conflicting leases, operating agreements, private claims or other future obligations or conditions which may affect all or any portion of the leased Tract, it shall not relieve the Lessee of the obligation to pay any bonus due thereon to the Louisiana State Mineral Board, nor shall the Louisiana State Mineral Board be obligated to refund any consideration paid by the Lessor prior to such modification, cancellation, or abrogation, including, but not limited to, bonuses, rentals and royalties.

NOTE: The State of Louisiana does hereby reserve, and this lease shall be subject to, the imprescriptible right of surface use in the nature of a servitude in favor of the Department of Natural Resources, including its Offices and Commissions, for the sole purpose of implementing, constructing, servicing and maintaining approved coastal zone management and/or restoration projects. Utilization of any and all rights derived under this lease by the mineral lessee, its agents, successors or assigns, shall not interfere with nor hinder the reasonable surface use by the Department of Natural Resources, its Offices or Commissions, as herein above reserved.

NOTE: The Department of Wildlife and Fisheries has designated certain areas in the coastal waters of the State of Louisiana as Oyster Seed Bed Areas. The exact location of those Seed Bed Areas must be obtained from the Department of Wildlife and Fisheries and any work done under a mineral lease from the State of Louisiana may necessarily be conducted in conformity with the rules and regulations promulgated by the said Department of Wildlife and Fisheries for Oyster Seed Bed Areas.

Applicant: KARE-SUE ENERGY, INC.

Bidder	Cash Payment	Price/Acre	Rental	Oil	Gas	Other

Legend

08060037
Blocks

JEFFERSON PARISH

GRAND ISLE AREA

GI0007

GI0011

P.O.B.

GI0006

GULF OF MEXICO



TRACT 39910 - Portion of Blocks 12, and 5, Grand Isle Area, Jefferson Parish, Louisiana

All of the lands now or formerly constituting the beds and bottoms of all water bodies of every nature and description as to which title is vested in the State of Louisiana, together with all islands arising therein and other lands formed by accretion or by reliction, where allowed by law, excepting tax adjudicated lands, and not presently under mineral lease on June 11, 2008, situated in Jefferson Parish, Louisiana, and more particularly described as follows: Beginning at the Southeast corner of Block 5, Grand Isle Area, having Coordinates of X = 2,428,143.81 and Y = 200,293.43; thence West 11,730.20 feet to a point on the West line of said Block 5, having Coordinates of X = 2,416,413.61 and Y = 200,293.43; thence along the boundary of said Block 5 the following courses: North 37 degrees 04 minutes 36 seconds East 47.09 feet, North 49 degrees 22 minutes 33 seconds East 2,724.65 feet, North 54 degrees 47 minutes 09 seconds East 5,578.93 feet, North 58 degrees 03 minutes 13 seconds East 4,630.29 feet and North 57 degrees 30 minutes 48 seconds East 1,359.56 feet to its Northernmost corner having Coordinates of X = 2,428,143.81 and Y = 208,502.22; thence South 8,208.79 feet to the point of beginning, containing approximately **1,172.33 acres**,

, all as more particularly outlined on a plat on file in the Office of Mineral Resources, Department of Natural Resources. All bearings, distances and coordinates are based on Louisiana Coordinate System of 1927, (North or South Zone), where applicable.

NOTE: The above description of the Tract nominated for lease has been provided and corrected, where required, exclusively by the nomination party. Any mineral lease selected from this Tract and awarded by the Louisiana State Mineral Board shall be without warranty of any kind, either express, implied, or statutory, including, but not limited to, the implied warranties of merchantability and fitness for a particular purpose. Should the mineral lease awarded by the Louisiana State Mineral Board be subsequently modified, cancelled or abrogated due to the existence of conflicting leases, operating agreements, private claims or other future obligations or conditions which may affect all or any portion of the leased Tract, it shall not relieve the Lessee of the obligation to pay any bonus due thereon to the Louisiana State Mineral Board, nor shall the Louisiana State Mineral Board be obligated to refund any consideration paid by the Lessor prior to such modification, cancellation, or abrogation, including, but not limited to, bonuses, rentals and royalties.

NOTE: The State of Louisiana does hereby reserve, and this lease shall be subject to, the imprescriptible right of surface use in the nature of a servitude in favor of the Department of Natural Resources, including its Offices and Commissions, for the sole purpose of implementing,

constructing, servicing and maintaining approved coastal zone management and/or restoration projects. Utilization of any and all rights derived under this lease by the mineral lessee, its agents, successors or assigns, shall not interfere with nor hinder the reasonable surface use by the Department of Natural Resources, its Offices or Commissions, as herein above reserved.

NOTE: The Department of Wildlife and Fisheries has designated certain areas in the coastal waters of the State of Louisiana as Oyster Seed Bed Areas. The exact location of those Seed Bed Areas must be obtained from the Department of Wildlife and Fisheries and any work done under a mineral lease from the State of Louisiana may necessarily be conducted in conformity with the rules and regulations promulgated by the said Department of Wildlife and Fisheries for Oyster Seed Bed Areas.

Applicant: KARE-SUE ENERGY, INC.

Bidder	Cash Payment	Price/Acre	Rental	Oil	Gas	Other

Legend
08060033
Blocks



JEFFERSON PARISH

GULF OF MEXICO

GI0006

P.O.B.

GI0011

GI0012

GRAND ISLE AREA

TRACT 39911 - Portion of Block 6, Grand Isle Area, Jefferson Parish, Louisiana

All of the lands now or formerly constituting the beds and bottoms of all water bodies of every nature and description as to which title is vested in the State of Louisiana, together with all islands arising therein and other lands formed by accretion or by reliction, where allowed by law, excepting tax adjudicated lands, and not presently under mineral lease on June 11, 2008, situated in Jefferson Parish, Louisiana, and more particularly described as follows: Beginning at a point within Block 6, Grand Isle Area, having Coordinates of X = 2,435,522.83 and Y = 208,502.22; thence South 8,208.79 feet to a point on the South line of Block 6 having Coordinates of X = 2,435,522.83 and Y = 200,293.43; thence West 7,379.02 feet along said Block 6 to its Southwest corner having Coordinates of X = 2,428,143.81 and Y = 200,293.43; thence North 8,208.79 feet along the West line of said Block 6 to a point having Coordinates of X = 2,428,143.81 and Y = 208,502.22; thence East 7,379.02 feet to the point of beginning, containing approximately **1,390.56 acres**, all as more particularly outlined on a plat on file in the Office of Mineral Resources, Department of Natural Resources. All bearings, distances and coordinates are based on Louisiana Coordinate System of 1927, (North or South Zone), where applicable.

NOTE: The above description of the Tract nominated for lease has been provided and corrected, where required, exclusively by the nomination party. Any mineral lease selected from this Tract and awarded by the Louisiana State Mineral Board shall be without warranty of any kind, either express, implied, or statutory, including, but not limited to, the implied warranties of merchantability and fitness for a particular purpose. Should the mineral lease awarded by the Louisiana State Mineral Board be subsequently modified, cancelled or abrogated due to the existence of conflicting leases, operating agreements, private claims or other future obligations or conditions which may affect all or any portion of the leased Tract, it shall not relieve the Lessee of the obligation to pay any bonus due thereon to the Louisiana State Mineral Board, nor shall the Louisiana State Mineral Board be obligated to refund any consideration paid by the Lessor prior to such modification, cancellation, or abrogation, including, but not limited to, bonuses, rentals and royalties.

NOTE: The State of Louisiana does hereby reserve, and this lease shall be subject to, the imprescriptible right of surface use in the nature of a servitude in favor of the Department of Natural Resources, including its Offices and Commissions, for the sole purpose of implementing, constructing, servicing and maintaining approved coastal zone management and/or restoration projects. Utilization of any and all rights derived under this lease by the mineral lessee, its agents, successors or assigns, shall not interfere with nor hinder the reasonable surface use by the Department of Natural Resources, its Offices or Commissions, as herein above reserved.

NOTE: The Department of Wildlife and Fisheries has designated certain areas in the coastal waters of the State of Louisiana as Oyster Seed Bed Areas. The exact location of those Seed Bed Areas must be obtained from the Department of Wildlife and Fisheries and any work done under a mineral lease from the State of Louisiana may necessarily be conducted in conformity with the rules and regulations promulgated by the said Department of Wildlife and Fisheries for Oyster Seed Bed Areas.

Applicant: KARE-SUE ENERGY, INC.

Bidder	Cash Payment	Price/Acre	Rental	Oil	Gas	Other

JEFFERSON PARISH

G10006

GULF OF MEXICO

P.O.B.

G10011



G10005

GRAND ISLE AREA