

TRACT 39892 - Terrebonne Parish, Louisiana

All of the lands now or formerly constituting the beds and bottoms of all water bodies of every nature and description as to which title is vested in the State of Louisiana, together with all islands arising therein and other lands formed by accretion or by reliction, where allowed by law, excepting tax adjudicated lands, and not presently under mineral lease on June 11, 2008, situated in Terrebonne Parish, Louisiana, and more particularly described as follows: Beginning at a point having Coordinates of X = 2,239,400.00 and Y = 305,500.00; thence West 18,000.00 feet to a point having Coordinates of X = 2,221,400.00 and Y = 305,500.00; thence North 18,000.00 feet to a point having Coordinates of X = 2,221,400.00 and Y = 323,500.00; thence East 18,000.00 feet to a point having Coordinates of X = 2,239,400.00 and Y = 323,500.00; thence South 18,000.00 feet to the point of beginning, containing approximately **96 acres**, all as more particularly outlined on a plat on file in the Office of Mineral Resources, Department of Natural Resources. All bearings, distances and coordinates are based on Louisiana Coordinate System of 1927, (North or South Zone), where applicable.

NOTE: The above description of the Tract nominated for lease has been provided and corrected, where required, exclusively by the nomination party. Any mineral lease selected from this Tract and awarded by the Louisiana State Mineral Board shall be without warranty of any kind, either express, implied, or statutory, including, but not limited to, the implied warranties of merchantability and fitness for a particular purpose. Should the mineral lease awarded by the Louisiana State Mineral Board be subsequently modified, cancelled or abrogated due to the existence of conflicting leases, operating agreements, private claims or other future obligations or conditions which may affect all or any portion of the leased Tract, it shall not relieve the Lessee of the obligation to pay any bonus due thereon to the Louisiana State Mineral Board, nor shall the Louisiana State Mineral Board be obligated to refund any consideration paid by the Lessor prior to such modification, cancellation, or abrogation, including, but not limited to, bonuses, rentals and royalties.

NOTE: The State of Louisiana does hereby reserve, and this lease shall be subject to, the imprescriptible right of surface use in the nature of a servitude in favor of the Department of Natural Resources, including its Offices and Commissions, for the sole purpose of implementing, constructing, servicing and maintaining approved coastal zone management and/or restoration projects. Utilization of any and all rights derived under this lease by the mineral lessee, its agents, successors or assigns, shall not interfere with nor hinder the reasonable surface use by the Department of Natural Resources, its Offices or Commissions, as herein above reserved.

Applicant: ROBERT A. SCHROEDER, INC.

Bidder	Cash Payment	Price/ Acre	Rental	Oil	Gas	Other

Legend



08060016

DOQQ2004

0

4,000 Feet

N



TERREBONNE PARISH

T17S - R18E

BAYOU PETIT CAILLOU

BAYOU TERREBONNE

P.O.B.

T18S - R18E

Office of Mineral Resources, Acres: 96 Tract Number: 39892

TRACT 39893 - Portion of Blocks 289, 290, and 293, South Marsh Island Area, Iberia and Vermilion Parishes, Louisiana

All of the lands now or formerly constituting the beds and bottoms of all water bodies of every nature and description as to which title is vested in the State of Louisiana, together with all islands arising therein and other lands formed by accretion or by reliction, where allowed by law, excepting tax adjudicated lands, and not presently under mineral lease on June 11, 2008, situated in Iberia and Vermilion Parishes, Louisiana, and more particularly described as follows: Beginning at a point on the Louisiana Coastline, as decreed by the Supreme Court of the United States, as determined by a Special Master appointed therein, in litigation styled *United States v. State of Louisiana et al No. 9 Original*, in 1975, having Coordinates of X = 1,787,583.60 and Y = 314,020.23; thence along the boundary of said Louisiana Coastline the following courses: North 31 degrees 42 minutes 28 seconds West 8,593.43 feet to a point having Coordinates of X = 1,783,067 and Y = 321,331; North 51 degrees 07 minutes 26 seconds West 868.33 feet to a point having Coordinates of X = 1,782,391 and Y = 321,876; North 51 degrees 30 minutes 02 seconds West 4,628.07 feet to a point having Coordinates of X = 1,778,769 and Y = 324,757 and North 60 degrees 35 minutes 13 seconds West 8,961.08 feet to a point having Coordinates of X = 1,770,962.99 and Y = 329,157.81; thence East 7,859.97 feet to a point said to be on the boundary of Marsh Island Wildlife Refuge having Coordinates of X = 1,778,822.96 and Y = 329,157.81; thence along the meanders of said Marsh Island Refuge the following: Southeasterly to a point having Coordinates of X = 1,779,888.62 and Y = 327,953.78; Southeasterly to a point having Coordinates of X = 1,781,853.56 and Y = 326,910.34; Southeasterly to a point having Coordinates of X = 1,783,344.33 and Y = 325,788.32; Southeasterly to a point having Coordinates of X = 1,784,935.93 and Y = 325,103.64; Southeasterly to a point having Coordinates of X = 1,786,187.08 and Y = 324,367.15; Southeasterly to a point having Coordinates of X = 1,786,864.54 and Y = 323,692.45 and Southeasterly to a point having Coordinates of X = 1,787,583.60 and Y = 323,419.49; thence South 298.06 feet to the Northwest corner of Parcel II, Lighthouse Point Field, State Lease No. 340, as amended, having Coordinates of X = 1,787,583.60 and Y = 323,121.43; thence South 9,101.20 feet along the West boundary of said portion of State Lease No. 340 to the point of beginning, **LESS AND EXCEPT** that portion, if any, of the Marsh Island Wildlife Refuge that may lie within the above described tract, containing approximately **1,564.41 acres**, all as more particularly outlined on a plat on file in the Office of Mineral Resources, Department of Natural Resources. All bearings, distances and coordinates are based on Louisiana Coordinate System of 1927, (North or South Zone), where applicable.

NOTE: The above description of the Tract nominated for lease has been provided and corrected, where required, exclusively by the nomination party. Any mineral lease selected from this Tract and awarded by the Louisiana State Mineral Board shall be without warranty of any kind, either express, implied, or statutory, including, but not limited to, the

implied warranties of merchantability and fitness for a particular purpose. Should the mineral lease awarded by the Louisiana State Mineral Board be subsequently modified, cancelled or abrogated due to the existence of conflicting leases, operating agreements, private claims or other future obligations or conditions which may affect all or any portion of the leased Tract, it shall not relieve the Lessee of the obligation to pay any bonus due thereon to the Louisiana State Mineral Board, nor shall the Louisiana State Mineral Board be obligated to refund any consideration paid by the Lessor prior to such modification, cancellation, or abrogation, including, but not limited to, bonuses, rentals and royalties.

NOTE: The acreage contained herein, being a portion of State Lease 335, 340 or 341, was subject to the litigation between Texas, Inc. and the State of Louisiana which resulted in the Global Settlement Agreement compromise whereby this acreage was reassigned through various mesne conveyances to the successors of William T. Burton, the original lessee of said leases from the State, (hereinafter otherwise referred to as the "ORRO's) and approved by the State Mineral Board, becoming effective April 25, 1994. Under separate agreement by and between the State and the ORRO's, certain obligations were to be met within a specified time frame or the ORRO's became obligated to release the reassigned acreage back to the State. The obligations were not met within the specified time frame and the State began securing the releases for the acreage contained herein. Due to the extremely large number of ORRO's, their nationwide and worldwide dispersal, the unreliability of available contact information and/or a present inability to obtain full, requisite cooperation, the State has, as yet, not secured releases from certain ORRO's representing approximately a .0258336 interest in this acreage. Accordingly, although the State is diligently pursuing the requisite releases affecting this acreage (the furnishing of which the ORRO's representing the stated decimal interest are obligated), nevertheless, a party obtaining a mineral lease from the State of Louisiana on the acreage contained herein shall do so with full knowledge that a complete release of all specific ORRO interest in this acreage has not as yet been secured and shall assume a business risk commensurate with the unsecured interest release.

NOTE: The State of Louisiana does hereby reserve, and this lease shall be subject to, the imprescriptible right of surface use in the nature of a servitude in favor of the Department of Natural Resources, including its Offices and Commissions, for the sole purpose of implementing, constructing, servicing and maintaining approved coastal zone management and/or restoration projects. Utilization of any and all rights derived under this lease by the mineral lessee, its agents, successors or assigns, shall not interfere with nor hinder the reasonable surface use by the Department of Natural Resources, its Offices or Commissions, as herein above reserved.

NOTE: It appears, according to our records, that a portion of this Tract is located within the restrictive safety fairway area as set out by the

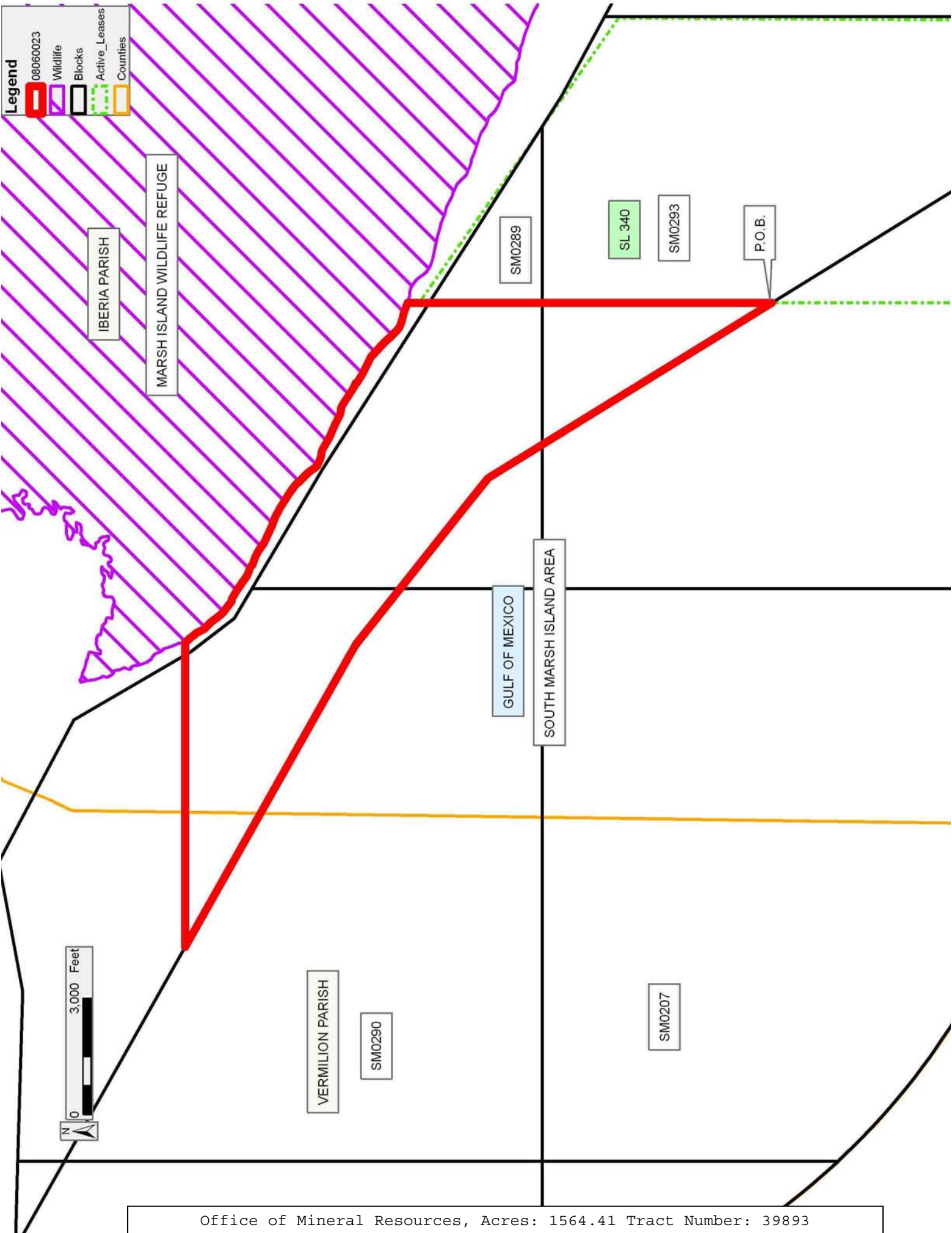
Corps of Engineers, U.S. Army and/or the restrictive anchorage area as set out by the U.S. Coast Guard.

NOTE: The Department of Wildlife and Fisheries has designated certain areas in the coastal waters of the State of Louisiana as Oyster Seed Bed Areas. The exact location of those Seed Bed Areas must be obtained from the Department of Wildlife and Fisheries and any work done under a mineral lease from the State of Louisiana may necessarily be conducted in conformity with the rules and regulations promulgated by the said Department of Wildlife and Fisheries for Oyster Seed Bed Areas.

NOTE: All or a portion of this Tract lies within one nautical mile of the boundary of the Russell Sage or Marsh Island Wildlife Refuge and Game Preserve. Any activities connected with this lease conducted within this Tract which may pose potential environmental impacts to the said Wildlife Refuge and Game Preserve should be coordinated with the Louisiana Department of Wildlife and Fisheries.

Applicant: THEOPHILUS OIL, GAS & LAND SERVICES, LLC

Bidder	Cash Payment	Price/ Acre	Rental	Oil	Gas	Other



TRACT 39894 - Lafourche Parish, Louisiana

All of the lands now or formerly constituting the beds and bottoms of all water bodies of every nature and description as to which title is vested in the State of Louisiana, together with all islands arising therein and other lands formed by accretion or by reliction, where allowed by law, excepting tax adjudicated lands, and not presently under mineral lease on June 11, 2008, situated in Lafourche Parish, Louisiana, and more particularly described as follows: Beginning at a Point having Coordinates of X = 2,306,345.44 and Y = 312,796.49; thence North 89 degrees 16 minutes 41 seconds East 16,764.72 feet to a point having Coordinates of X = 2,323,108.83 and Y = 313,007.72; thence South 01 degrees 06 minutes 24 seconds West 16,183.92 feet to a point having Coordinates of X = 2,322,796.23 and Y = 296,826.82; thence North 89 degrees 47 minutes 02 seconds West approximately 8,268 feet to a point on the boundary of Pointe Aux Chenes State Wildlife Management Area; thence Northwesterly along the said boundary of Pointe Aux Chenes State Wildlife Management Area to a point that intersects a line that bears South 82 degrees 51 minutes 01 seconds East and a midpoint having Coordinates of X = 2,310,781.93 and Y = 304,753.82; thence North 82 degrees 51 minutes 02 seconds West along said line approximately 2,643 feet to a point on the said boundary of Pointe Aux Chenes State Wildlife Management Area; thence Southwesterly along the said boundary of Pointe Aux Chenes State Wildlife Management Area, to a point that intersects a line that bear South 00 degrees 49 minutes 05 seconds East from a coordinate X = 2,306,345.44 and Y = 312,796.49; thence North 00 degrees 49 minutes 05 seconds West along said line approximately 7,940 feet to the point of beginning, **LESS AND EXCEPT** that portion, if any, that lies within the Pointe Aux Chenes State Wildlife Management Area, containing approximately **73 acres**, all as more particularly outlined on a plat on file in the Office of Mineral Resources, Department of Natural Resources. All bearings, distances and coordinates are based on Louisiana Coordinate System of 1927, (North or South Zone), where applicable.

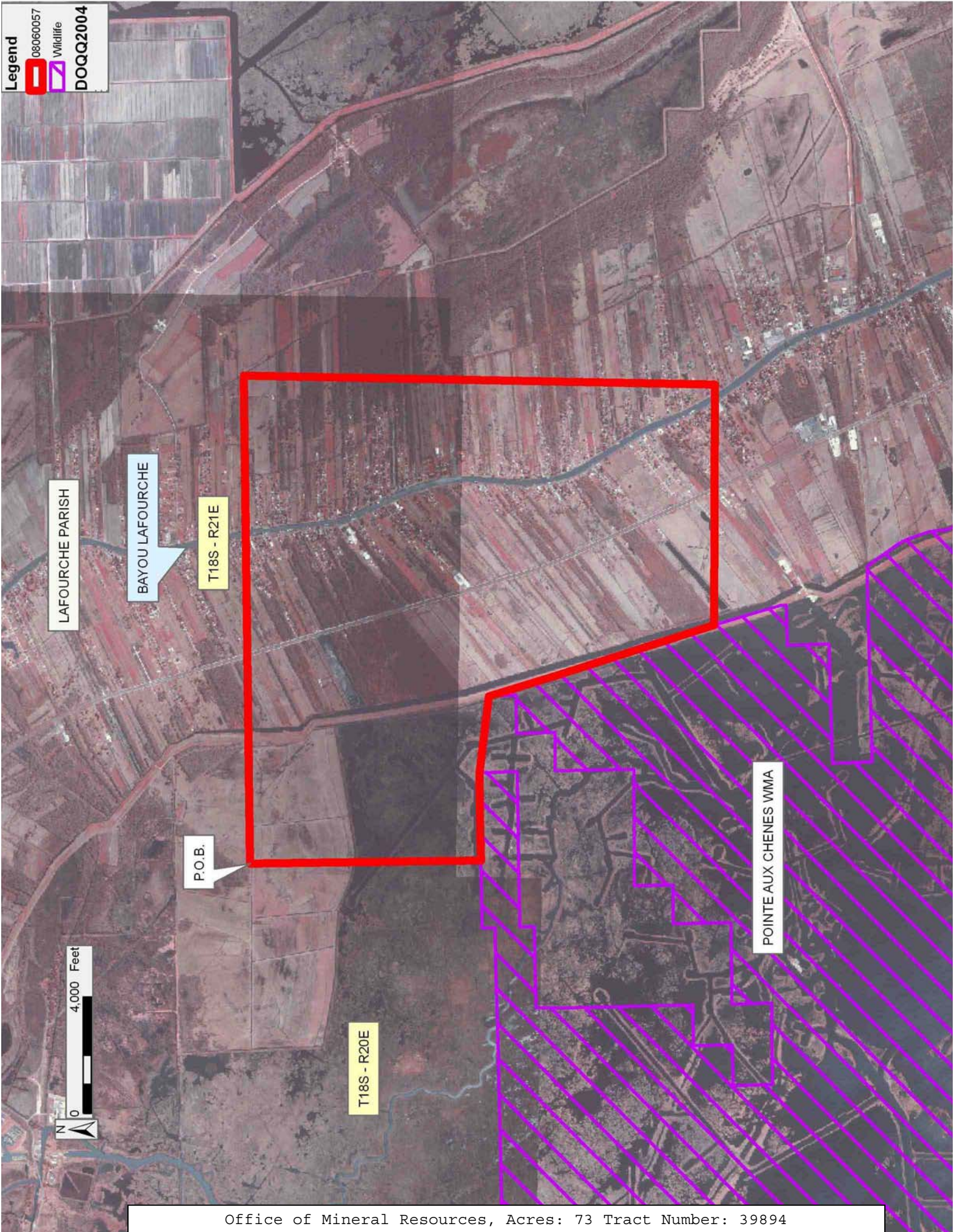
NOTE: The above description of the Tract nominated for lease has been provided and corrected, where required, exclusively by the nomination party. Any mineral lease selected from this Tract and awarded by the Louisiana State Mineral Board shall be without warranty of any kind, either express, implied, or statutory, including, but not limited to, the implied warranties of merchantability and fitness for a particular purpose. Should the mineral lease awarded by the Louisiana State Mineral Board be subsequently modified, cancelled or abrogated due to the existence of conflicting leases, operating agreements, private claims or other future obligations or conditions which may affect all or any portion of the leased Tract, it shall not relieve the Lessee of the obligation to pay any bonus due thereon to the Louisiana State Mineral Board, nor shall the Louisiana State Mineral Board be obligated to refund any consideration paid by the Lessor prior to such modification, cancellation, or abrogation, including, but not limited to, bonuses, rentals and royalties.

NOTE: The State of Louisiana does hereby reserve, and this lease shall be subject to, the imprescriptible right of surface use in the nature of a servitude in favor of the Department of Natural Resources, including its Offices and Commissions, for the sole purpose of implementing, constructing, servicing and maintaining approved coastal zone management and/or restoration projects. Utilization of any and all rights derived under this lease by the mineral lessee, its agents, successors or assigns, shall not interfere with nor hinder the reasonable surface use by the Department of Natural Resources, its Offices or Commissions, as herein above reserved.

Applicant: STARKS OIL CORPORATION

Bidder	Cash Payment	Price/ Acre	Rental	Oil	Gas	Other

Legend
08060057
Wildlife
DOQQ2004



TRACT 39895 - Lafourche Parish, Louisiana

All of the lands now or formerly constituting the beds and bottoms of all water bodies of every nature and description as to which title is vested in the State of Louisiana, together with all islands arising therein and other lands formed by accretion or by reliction, where allowed by law, excepting tax adjudicated lands, and not presently under mineral lease on June 11, 2008, situated in Lafourche Parish, Louisiana, and more particularly described as follows: Beginning at a Point having Coordinates of X = 2,306,345.44 and Y = 312,796.49; thence South 00 degrees 49 minutes 05 seconds East approximately 7,935 feet to a point on the boundary of Pointe Aux Chenes State Wildlife Management Area; thence Westerly, Southerly, and Westerly, along the Northern boundary of said Pointe Aux Chenes Wildlife Management Area to a point that intersects a line having a bearing of South 00 degrees 51 minutes 09 seconds East from a Coordinate X = 2,287,878.06 and Y = 312,113.64; thence North 00 degrees 51 minutes 09 seconds West approximately 8,116 feet along said line to a point having Coordinates of X = 2,287,878.06 and Y = 312,113.64; thence North 88 degrees 41 minutes 54 seconds East 16,106.03 feet to a point having Coordinates of X = 2,303,979.93 and Y = 312,479.52; thence North 01 degrees 11 minutes 28 seconds West 242.60 feet to a point having Coordinates of X = 2,303,974.89 and Y = 312,722.07; thence North 88 degrees 12 minutes 07 seconds East 2,371.72 feet to the point of beginning, **LESS AND EXCEPT** that portion, if any, of Operating Agreement 185 that lies within the Textularia Sand, Reservoir L, Bully Camp Field, being defined herein as the oil and gas bearing Sand encountered between the depth of 11,529 feet and 11,709 feet (induction-electric log measurement) in the Exxon Fee B-1 Well located in Section 54, Township 19 South, Range 21 East, Lafourche Parish, Louisiana, and the TP-5 Sand, Reservoir J, Bully Camp Field, being defined herein as the oil and gas bearing Sand encountered between the depth of 10,156 feet and 10,178 feet (induction-electric log measurement) in the Exxon Benquin Corporation Well No. 1 Well located in Section 55, Township 18 South, Range 21 East, Lafourche Parish, Louisiana, as it pertains only to Section 24, Township 18 South, Range 20 East and **LESS AND EXCEPT** that portion, if any, that lies within the Pointe Aux Chenes State Wildlife Management Area, containing approximately **42 acres**, all as more particularly outlined on a plat on file in the Office of Mineral Resources, Department of Natural Resources. All bearings, distances and coordinates are based on Louisiana Coordinate System of 1927, (North or South Zone), where applicable.

NOTE: The above description of the Tract nominated for lease has been provided and corrected, where required, exclusively by the nomination party. Any mineral lease selected from this Tract and awarded by the Louisiana State Mineral Board shall be without warranty of any kind, either express, implied, or statutory, including, but not limited to, the implied warranties of merchantability and fitness for a particular purpose. Should the mineral lease awarded by the Louisiana State Mineral Board be subsequently modified, cancelled or abrogated due to the existence of conflicting leases, operating agreements, private claims or

other future obligations or conditions which may affect all or any portion of the leased Tract, it shall not relieve the Lessee of the obligation to pay any bonus due thereon to the Louisiana State Mineral Board, nor shall the Louisiana State Mineral Board be obligated to refund any consideration paid by the Lessor prior to such modification, cancellation, or abrogation, including, but not limited to, bonuses, rentals and royalties.

NOTE: The State of Louisiana does hereby reserve, and this lease shall be subject to, the imprescriptible right of surface use in the nature of a servitude in favor of the Department of Natural Resources, including its Offices and Commissions, for the sole purpose of implementing, constructing, servicing and maintaining approved coastal zone management and/or restoration projects. Utilization of any and all rights derived under this lease by the mineral lessee, its agents, successors or assigns, shall not interfere with nor hinder the reasonable surface use by the Department of Natural Resources, its Offices or Commissions, as herein above reserved.

Applicant: STARKS OIL CORPORATION

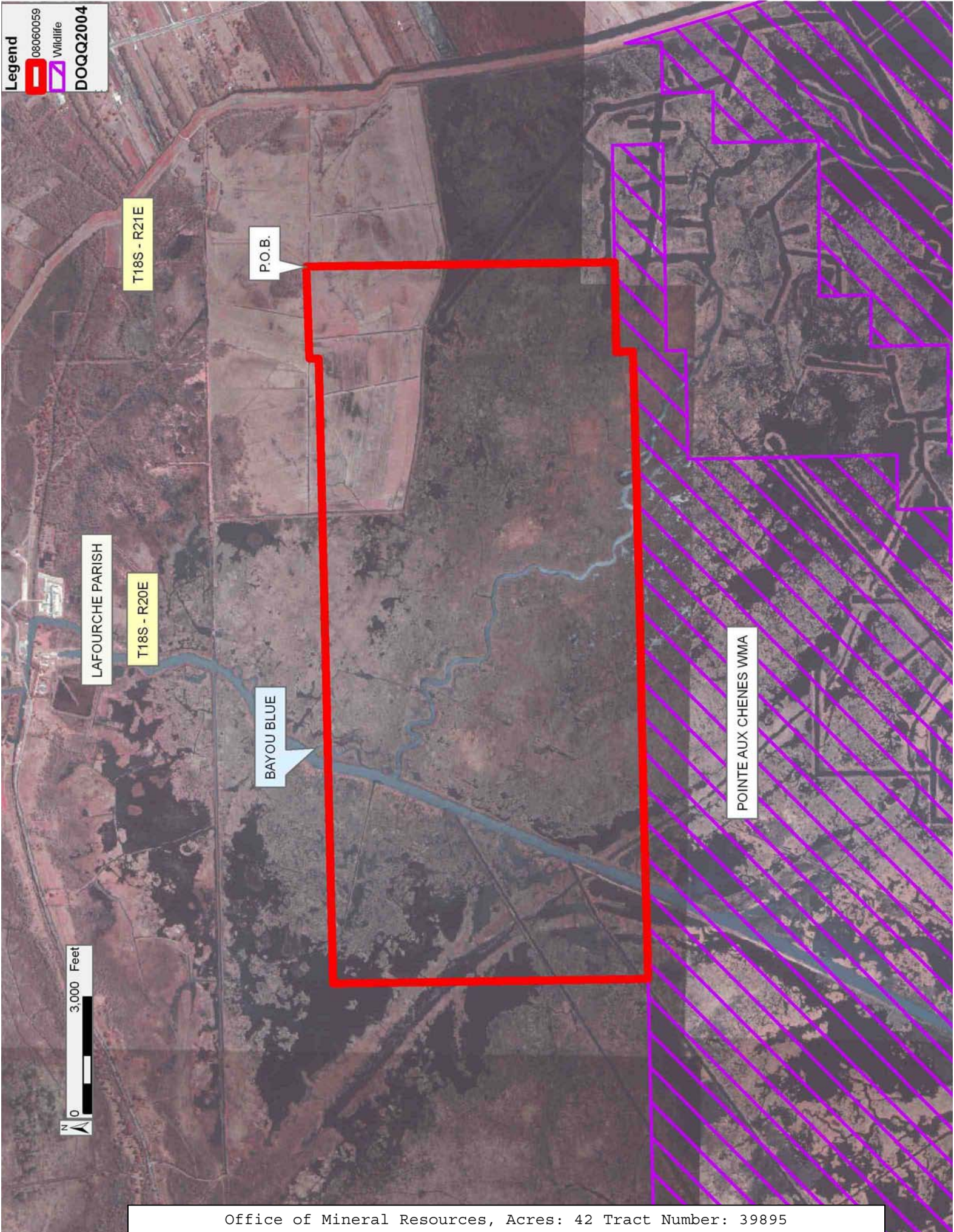
Bidder	Cash Payment	Price/ Acre	Rental	Oil	Gas	Other

Legend

08060059

Wildlife

DOQQ2004



TRACT 39896 - Lafourche and Terrebonne Parishes, Louisiana

All of the lands now or formerly constituting the beds and bottoms of all water bodies of every nature and description as to which title is vested in the State of Louisiana, together with all islands arising therein and other lands formed by accretion or by reliction, where allowed by law, excepting tax adjudicated lands, and not presently under mineral lease on June 11, 2008, situated in Lafourche and Terrebonne Parishes, Louisiana, and more particularly described as follows: Beginning at a Point having Coordinates of X = 2,257,400.00 and Y = 310,719.75; Thence North 88 degrees 44 minutes 10 seconds East 9,046.94 feet to a point having Coordinates of X = 2,266,444.74 and Y = 310,919.28; thence South 00 degrees 59 minutes 40 seconds East approximately 7,860 feet to a point on the boundary of Pointe Aux Chenes State Wildlife Management Area; thence Westerly, Southerly, Easterly, Southerly, Easterly, Southerly, Easterly, Northerly, Easterly, and Southerly, to a point that intersects a line that bears North 00 degrees 42 minutes 49 seconds West from a point having a coordinate of X = 2,266,759.48 and Y = 295,039.63; thence South 00 degrees 42 minutes 49 seconds East approximately 2,750 feet to a point having Coordinates of X = 2,266,759.48 and Y = 295,039.63; thence South 89 degrees 17 minutes 11 seconds West approximately 4,067 feet to a point on the said boundary of Pointe Aux Chenes State Wildlife Management Area; thence Northerly, Easterly, Northwesterly, Southerly, Westerly, Southerly, Westerly and Northerly, along the said boundary of Pointe Aux Chenes State Wildlife Management Area to a point that intersects a line that bears South 01 degrees 22 minutes 36 seconds East with a midpoint coordinate of X = 2,257,335.83 and Y = 298,192.91; thence North 01 degrees 22 minutes 36 seconds West approximately 3,998 feet to a point on the said boundary of Pointe Aux Chenes State Wildlife Management Area; thence Northerly and Westerly along the said boundary of Pointe Aux Chenes State Wildlife Management Area to a point that intersects a line that bears North 88 degrees 20 minutes 50 seconds East from a point having Coordinates of X = 2,250,577.51 and Y = 301,302.82; thence South 88 degrees 20 minutes 50 seconds West approximately 5,320 feet to a point having Coordinates of X = 2,250,577.51 and Y = 301,302.82; thence North 01 degrees 39 minutes 09 seconds West 2,526.73 feet to a point having Coordinates of X = 2,250,504.64 and Y = 303,828.50; thence North 33 degrees 00 minutes 53 seconds East 1,993.37 feet to a point having Coordinates of X = 2,251,590.73 and Y = 305,500.00; thence East 5,809.27 feet to a point having Coordinates of X = 2,257,400.00 and Y = 305,500.00; thence North 5,219.75 feet to the point of beginning, **LESS AND EXCEPT** that portion, if any, that lies within the Pointe Aux Chenes State Wildlife Management Area, containing approximately **11 acres**, all as more particularly outlined on a plat on file in the Office of Mineral Resources, Department of Natural Resources. All bearings, distances and coordinates are based on Louisiana Coordinate System of 1927, (North or South Zone), where applicable.

NOTE: The above description of the Tract nominated for lease has been provided and corrected, where required, exclusively by the nomination

party. Any mineral lease selected from this Tract and awarded by the Louisiana State Mineral Board shall be without warranty of any kind, either express, implied, or statutory, including, but not limited to, the implied warranties of merchantability and fitness for a particular purpose. Should the mineral lease awarded by the Louisiana State Mineral Board be subsequently modified, cancelled or abrogated due to the existence of conflicting leases, operating agreements, private claims or other future obligations or conditions which may affect all or any portion of the leased Tract, it shall not relieve the Lessee of the obligation to pay any bonus due thereon to the Louisiana State Mineral Board, nor shall the Louisiana State Mineral Board be obligated to refund any consideration paid by the Lessor prior to such modification, cancellation, or abrogation, including, but not limited to, bonuses, rentals and royalties.

NOTE: The State of Louisiana does hereby reserve, and this lease shall be subject to, the imprescriptible right of surface use in the nature of a servitude in favor of the Department of Natural Resources, including its Offices and Commissions, for the sole purpose of implementing, constructing, servicing and maintaining approved coastal zone management and/or restoration projects. Utilization of any and all rights derived under this lease by the mineral lessee, its agents, successors or assigns, shall not interfere with nor hinder the reasonable surface use by the Department of Natural Resources, its Offices or Commissions, as herein above reserved.

Applicant: STARKS OIL CORPORATION

Bidder	Cash Payment	Price/ Acre	Rental	Oil	Gas	Other



TRACT 39897 - Lafourche Parish, Louisiana

All of the lands now or formerly constituting the beds and bottoms of all water bodies of every nature and description as to which title is vested in the State of Louisiana, together with all islands arising therein and other lands formed by accretion or by reliction, where allowed by law, excepting tax adjudicated lands, and not presently under mineral lease on June 11, 2008, situated in Lafourche Parish, Louisiana, and more particularly described as follows: Beginning at a Point having Coordinates of X = 2,310,781.93 and Y = 304,753.82; thence South 82 degrees 51 minutes 00 seconds East approximately 1,326 feet to a point on the boundary of Pointe Aux Chenes State Wildlife Management Area; thence Southerly, Easterly, Southerly, Easterly, Southerly, and Easterly, along the said boundary of Pointe Aux Chenes State Wildlife Management Area, to a point that intersects a line that bears North 88 degrees 44 minutes 49 seconds East and a midpoint having Coordinates of X = 2,303,520.82 and Y = 299,544.72; thence South 88 degrees 44 minutes 49 seconds West along said line approximately 4,143 feet along said line to a point on the said boundary of Pointe Aux Chenes State Wildlife Management Area; thence Northerly, Westerly, Northerly, Westerly, and Northerly, along the said boundary of Pointe Aux Chenes State Wildlife Management Area, to a point that intersects a line that bears North 82 degrees 51 minutes 02 seconds West from point of beginning; thence South 82 degrees 51 minutes 02 seconds East approximately 1,317 feet along said line to the point of beginning, **LESS AND EXCEPT** that portion, if any, of Operating Agreement 185 that lies within the Textularia Sand, Reservoir L, Bully Camp Field, being defined herein as the oil and gas bearing Sand encountered between the depth of 11,529 feet and 11,709 feet (induction-electric log measurement) in the Exxon Fee B-1 Well located in Section 54, Township 19 South, Range 21 East, Lafourche Parish, Louisiana, and the TP-5 Sand, Reservoir J, Bully Camp Field, being defined herein as the oil and gas bearing Sand encountered between the depth of 10,156 feet and 10,178 feet (induction-electric log measurement) in the Exxon Benquin Corporation Well No. 1 Well located in Section 55, Township 18 South, Range 21 East, Lafourche Parish, Louisiana and **LESS AND EXCEPT** that portion, if any, that lies within the Pointe Aux Chenes State Wildlife Management Area, containing approximately **28 acres**, all as more particularly outlined on a plat on file in the Office of Mineral Resources, Department of Natural Resources. All bearings, distances and coordinates are based on Louisiana Coordinate System of 1927, (North or South Zone), where applicable.

NOTE: The above description of the Tract nominated for lease has been provided and corrected, where required, exclusively by the nomination party. Any mineral lease selected from this Tract and awarded by the Louisiana State Mineral Board shall be without warranty of any kind, either express, implied, or statutory, including, but not limited to, the implied warranties of merchantability and fitness for a particular purpose. Should the mineral lease awarded by the Louisiana State Mineral Board be subsequently modified, cancelled or abrogated due to the existence of conflicting leases, operating agreements, private claims or

other future obligations or conditions which may affect all or any portion of the leased Tract, it shall not relieve the Lessee of the obligation to pay any bonus due thereon to the Louisiana State Mineral Board, nor shall the Louisiana State Mineral Board be obligated to refund any consideration paid by the Lessor prior to such modification, cancellation, or abrogation, including, but not limited to, bonuses, rentals and royalties.

NOTE: The State of Louisiana does hereby reserve, and this lease shall be subject to, the imprescriptible right of surface use in the nature of a servitude in favor of the Department of Natural Resources, including its Offices and Commissions, for the sole purpose of implementing, constructing, servicing and maintaining approved coastal zone management and/or restoration projects. Utilization of any and all rights derived under this lease by the mineral lessee, its agents, successors or assigns, shall not interfere with nor hinder the reasonable surface use by the Department of Natural Resources, its Offices or Commissions, as herein above reserved.

Applicant: STARKS OIL CORPORATION

Bidder	Cash Payment	Price/ Acre	Rental	Oil	Gas	Other

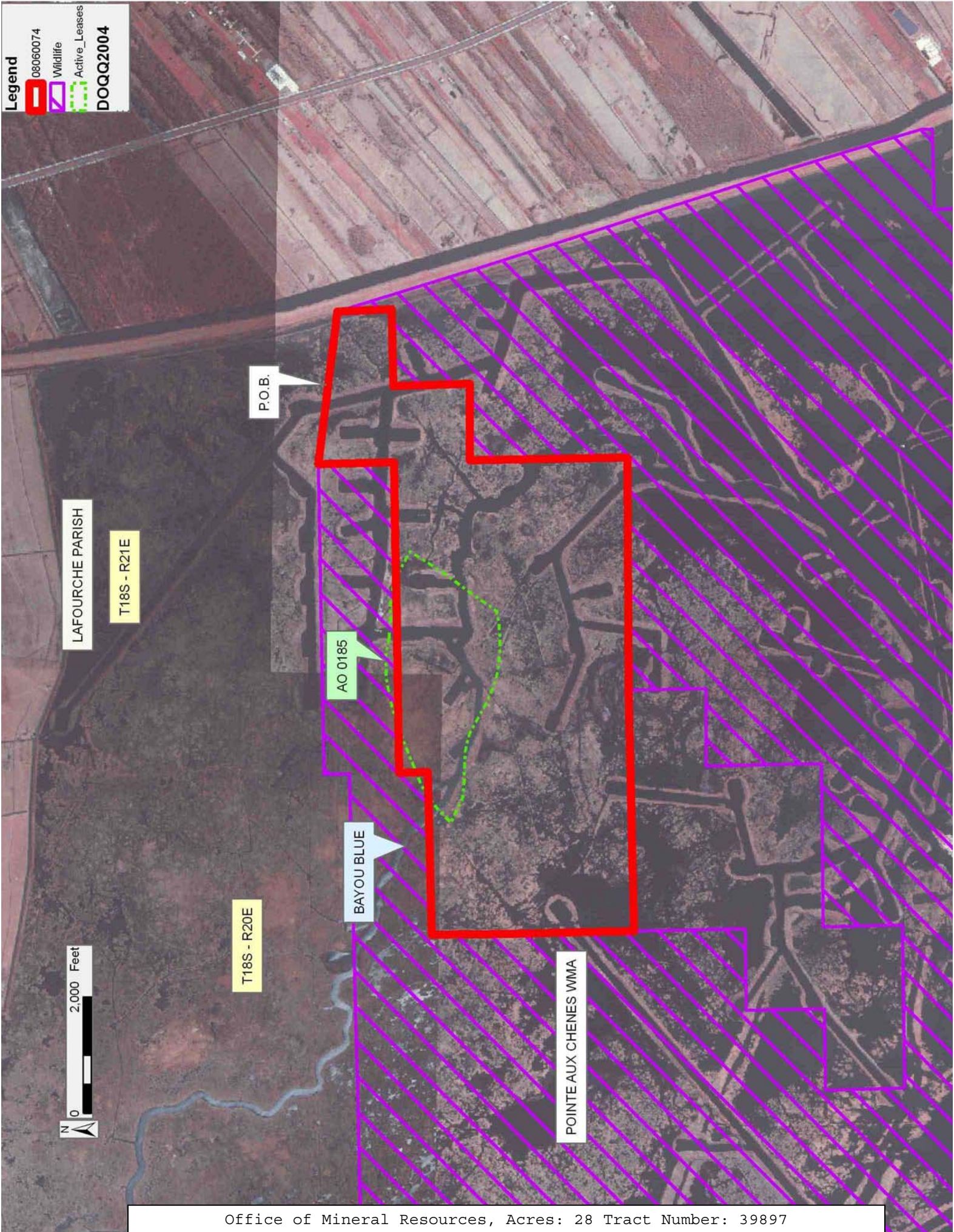
Legend

08060074

Wildlife

Active_Leases

DOQQ2004



TRACT 39898 - Lafourche Parish, Louisiana

All of the lands now or formerly constituting the beds and bottoms of all water bodies of every nature and description as to which title is vested in the State of Louisiana, together with all islands arising therein and other lands formed by accretion or by reliction, where allowed by law, excepting tax adjudicated lands, and not presently under mineral lease on June 11, 2008, situated in Lafourche Parish, Louisiana, and more particularly described as follows: Beginning at a Point having Coordinates of X = 2,317,995.62 and Y = 296,844.93; thence South 89 degrees 47 minutes 02 seconds East 11,304.08 feet to a point having Coordinates of X = 2,329,299.62 and Y = 296,802.30; thence South 17,349.66 feet to a point having Coordinates of X = 2,329,299.62 and Y = 279,452.64; thence West 1,925.26 feet to the Northeast corner of State Lease No. 19531 having Coordinates of X = 2,327,374.36 and Y = 279,452.64; thence West 5,785.74 feet along the Northern boundary of said State Lease No. 19531 to a point having Coordinates of X = 2,321,588.62 and Y = 279,452.64; thence North 11 degrees 40 minutes 20 seconds West 17,759.54 feet to the point of beginning, (This lease includes only waterbottoms claimed and owned by the state and specifically excludes any land which the state may claim or own and to which the mineral rights are vested in the state), containing approximately **74 acres**, all as more particularly outlined on a plat on file in the Office of Mineral Resources, Department of Natural Resources. All bearings, distances and coordinates are based on Louisiana Coordinate System of 1927, (North or South Zone), where applicable.

NOTE: The above description of the Tract nominated for lease has been provided and corrected, where required, exclusively by the nomination party. Any mineral lease selected from this Tract and awarded by the Louisiana State Mineral Board shall be without warranty of any kind, either express, implied, or statutory, including, but not limited to, the implied warranties of merchantability and fitness for a particular purpose. Should the mineral lease awarded by the Louisiana State Mineral Board be subsequently modified, cancelled or abrogated due to the existence of conflicting leases, operating agreements, private claims or other future obligations or conditions which may affect all or any portion of the leased Tract, it shall not relieve the Lessee of the obligation to pay any bonus due thereon to the Louisiana State Mineral Board, nor shall the Louisiana State Mineral Board be obligated to refund any consideration paid by the Lessor prior to such modification, cancellation, or abrogation, including, but not limited to, bonuses, rentals and royalties.

NOTE: The State of Louisiana does hereby reserve, and this lease shall be subject to, the imprescriptible right of surface use in the nature of a servitude in favor of the Department of Natural Resources, including its Offices and Commissions, for the sole purpose of implementing, constructing, servicing and maintaining approved coastal zone management and/or restoration projects. Utilization of any and all rights derived under this lease by the mineral lessee, its agents, successors or assigns, shall not interfere with nor hinder the reasonable surface use by the

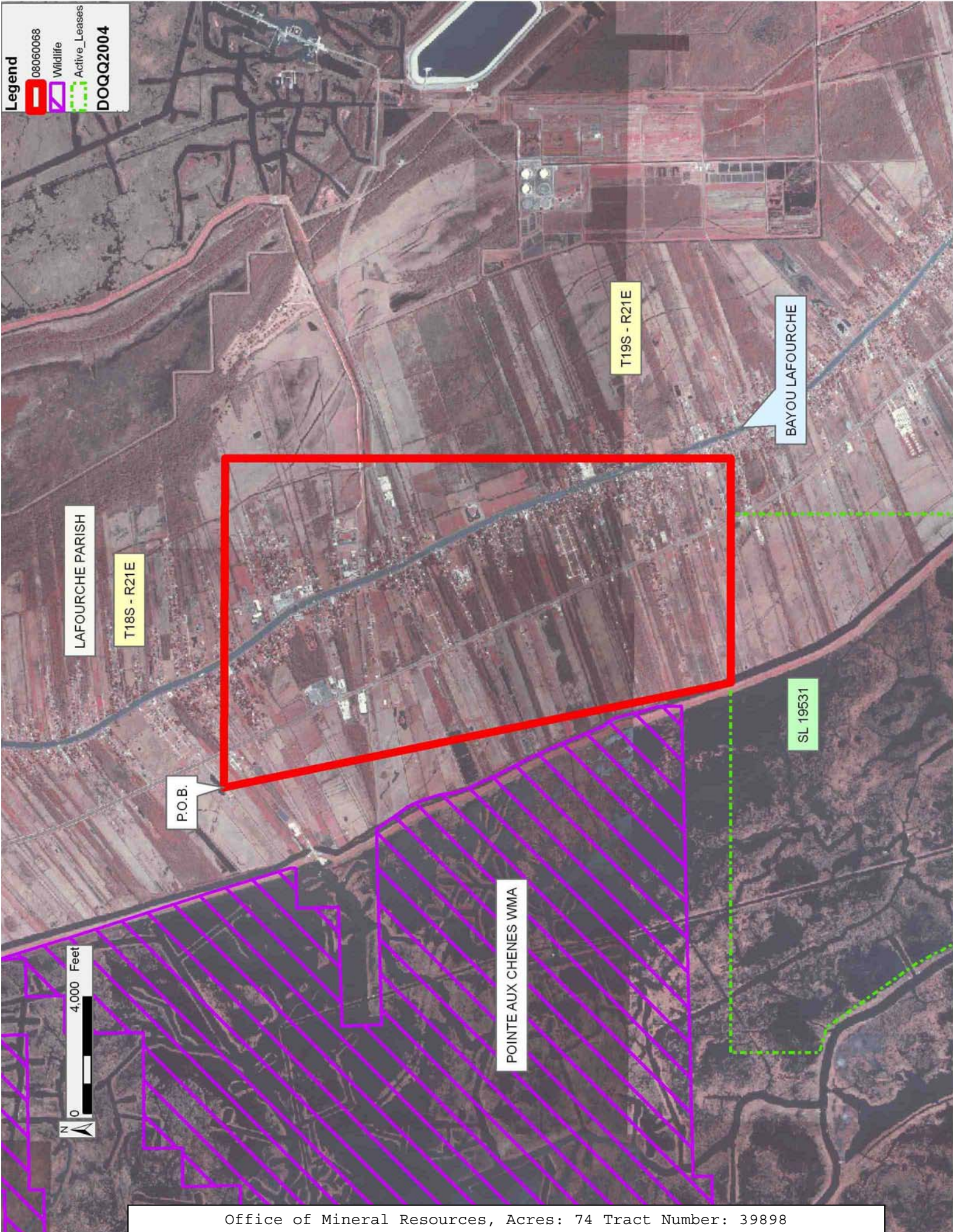
Department of Natural Resources, its Offices or Commissions, as herein above reserved.

Applicant: STARKS OIL CORPORATION

Bidder	Cash Payment	Price/ Acre	Rental	Oil	Gas	Other

Legend

08060068
Wildlife
Active_Leases
DOQQ2004



TRACT 39899 - Lafourche Parish, Louisiana

All of the lands now or formerly constituting the beds and bottoms of all water bodies of every nature and description as to which title is vested in the State of Louisiana, together with all islands arising therein and other lands formed by accretion or by reliction, where allowed by law, excepting tax adjudicated lands, and not presently under mineral lease on June 11, 2008, situated in Lafourche Parish, Louisiana, and more particularly described as follows: Beginning at a Point having Coordinates of X = 2,317,995.62 and Y = 296,844.93; thence South 11 degrees 40 minutes 20 seconds East 17,759.54 feet to a point on the Northern boundary of State Lease No. 19531, having Coordinates of X = 2,321,588.62 and Y = 279,452.64; thence West 12,694.26 feet along the said Northern boundary of State Lease No. 19531 to its Northwest corner, having Coordinates of X = 2,308,894.36 and Y = 279,452.64; thence South 89 degrees 40 minutes 06 seconds West 1,089.78 feet to a point having Coordinates of X = 2,307,804.60 and Y = 279,446.33; thence North 01 degrees 08 minutes 48 seconds West approximately 1,367 feet to a point on the boundary of Pointe Aux Chenes State Wildlife Management Area; thence Easterly, Northwesterly, Westerly, Northerly, Easterly, Northerly, Easterly, Northwesterly, along the said boundary of Pointe Aux Chenes State Wildlife Management Area, to a point that intersects a line that bears North 89 degrees 47 minutes 02 seconds West from point of beginning; thence South 89 degrees 47 minutes 02 seconds East approximately 3,463 feet along said line to the point of beginning, **LESS AND EXCEPT** that portion, if any, of Operating Agreement 185 that lies within the Textularia Sand, Reservoir L, Bully Camp Field, being defined herein as the oil and gas bearing Sand encountered between the depth of 11,529 feet and 11,709 feet (induction-electric log measurement) in the Exxon Fee B-1 Well located in Section 54, Township 19 South, Range 21 East, Lafourche Parish, Louisiana, and the TP-5 Sand, Reservoir J, Bully Camp Field, being defined herein as the oil and gas bearing Sand encountered between the depth of 10,156 feet and 10,178 feet (induction-electric log measurement) in the Exxon Benquin Corporation Well No. 1 Well located in Section 55, Township 18 South, Range 21 East, Lafourche Parish, Louisiana and **LESS AND EXCEPT** that portion, if any, that lies within of the Pointe Aux Chenes State Wildlife Management Area, containing approximately **18 acres**, all as more particularly outlined on a plat on file in the Office of Mineral Resources, Department of Natural Resources. All bearings, distances and coordinates are based on Louisiana Coordinate System of 1927, (North or South Zone), where applicable.

NOTE: The above description of the Tract nominated for lease has been provided and corrected, where required, exclusively by the nomination party. Any mineral lease selected from this Tract and awarded by the Louisiana State Mineral Board shall be without warranty of any kind, either express, implied, or statutory, including, but not limited to, the implied warranties of merchantability and fitness for a particular purpose. Should the mineral lease awarded by the Louisiana State Mineral Board be subsequently modified, cancelled or abrogated due to the existence of conflicting leases, operating agreements, private claims or

other future obligations or conditions which may affect all or any portion of the leased Tract, it shall not relieve the Lessee of the obligation to pay any bonus due thereon to the Louisiana State Mineral Board, nor shall the Louisiana State Mineral Board be obligated to refund any consideration paid by the Lessor prior to such modification, cancellation, or abrogation, including, but not limited to, bonuses, rentals and royalties.

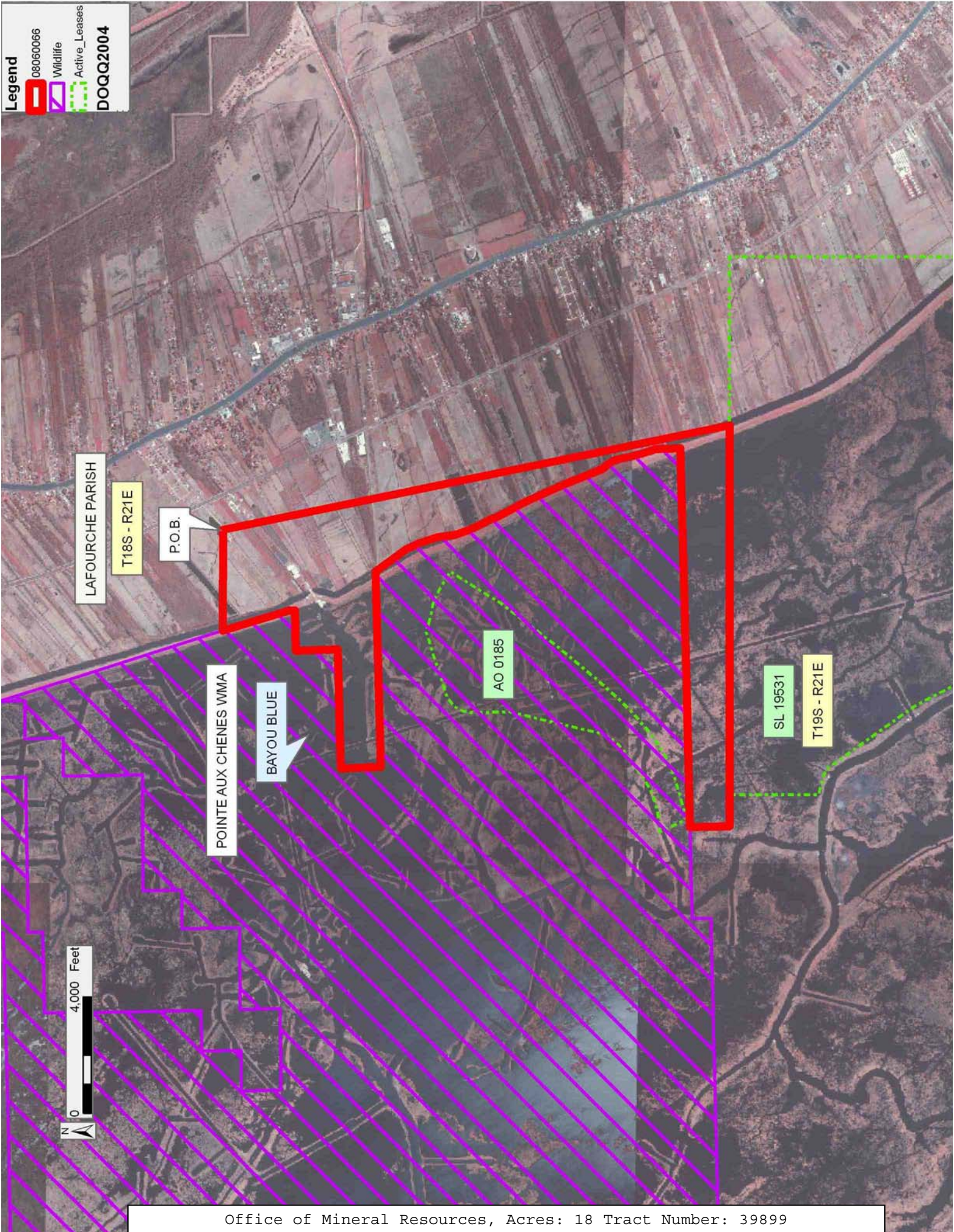
NOTE: The State of Louisiana does hereby reserve, and this lease shall be subject to, the imprescriptible right of surface use in the nature of a servitude in favor of the Department of Natural Resources, including its Offices and Commissions, for the sole purpose of implementing, constructing, servicing and maintaining approved coastal zone management and/or restoration projects. Utilization of any and all rights derived under this lease by the mineral lessee, its agents, successors or assigns, shall not interfere with nor hinder the reasonable surface use by the Department of Natural Resources, its Offices or Commissions, as herein above reserved.

Applicant: STARKS OIL CORPORATION

Bidder	Cash Payment	Price/ Acre	Rental	Oil	Gas	Other

Legend

- 08060066
- Wildlife
- Active Leases
- DOQQ2004



TRACT 39900 - Terrebonne Parish, Louisiana

All of the lands now or formerly constituting the beds and bottoms of all water bodies of every nature and description as to which title is vested in the State of Louisiana, together with all islands arising therein and other lands formed by accretion or by reliction, where allowed by law, excepting tax adjudicated lands, and not presently under mineral lease on June 11, 2008, situated in Terrebonne Parish, Louisiana, and more particularly described as follows: Beginning at a Point having Coordinates of X = 2,248,328.75 and Y = 297,094.76; thence South 12 degrees 26 minutes 45 seconds West 8,005.86 feet to a point having Coordinates of X = 2,246,603.36 and Y = 289,277.03; thence South 88 degrees 53 minutes 19 seconds West 10,709.06 feet to a point having Coordinates of X = 2,235,896.31 and Y = 289,069.32; thence North 00 degrees 17 minutes 02 seconds West 8,006.28 feet to a point having Coordinates of X = 2,235,856.64 and Y = 297,075.50; thence North 89 degrees 54 minutes 41 seconds East 12,472.12 feet to the point of beginning, containing approximately **51 acres**, all as more particularly outlined on a plat on file in the Office of Mineral Resources, Department of Natural Resources. All bearings, distances and coordinates are based on Louisiana Coordinate System of 1927, (North or South Zone), where applicable.

NOTE: The above description of the Tract nominated for lease has been provided and corrected, where required, exclusively by the nomination party. Any mineral lease selected from this Tract and awarded by the Louisiana State Mineral Board shall be without warranty of any kind, either express, implied, or statutory, including, but not limited to, the implied warranties of merchantability and fitness for a particular purpose. Should the mineral lease awarded by the Louisiana State Mineral Board be subsequently modified, cancelled or abrogated due to the existence of conflicting leases, operating agreements, private claims or other future obligations or conditions which may affect all or any portion of the leased Tract, it shall not relieve the Lessee of the obligation to pay any bonus due thereon to the Louisiana State Mineral Board, nor shall the Louisiana State Mineral Board be obligated to refund any consideration paid by the Lessor prior to such modification, cancellation, or abrogation, including, but not limited to, bonuses, rentals and royalties.

NOTE: The State of Louisiana does hereby reserve, and this lease shall be subject to, the imprescriptible right of surface use in the nature of a servitude in favor of the Department of Natural Resources, including its Offices and Commissions, for the sole purpose of implementing, constructing, servicing and maintaining approved coastal zone management and/or restoration projects. Utilization of any and all rights derived under this lease by the mineral lessee, its agents, successors or assigns, shall not interfere with nor hinder the reasonable surface use by the Department of Natural Resources, its Offices or Commissions, as herein above reserved.

Applicant: STARKS OIL CORPORATION

Bidder	Cash Payment	Price/ Acre	Rental	Oil	Gas	Other



TRACT 39901 - Lafourche and Terrebonne Parishes, Louisiana

All of the lands now or formerly constituting the beds and bottoms of all water bodies of every nature and description as to which title is vested in the State of Louisiana, together with all islands arising therein and other lands formed by accretion or by reliction, where allowed by law, excepting tax adjudicated lands, and not presently under mineral lease on June 11, 2008, situated in Lafourche and Terrebonne Parishes, Louisiana, and more particularly described as follows: Beginning at a Point having Coordinates of X = 2,266,759.48 and Y = 295,039.63; thence North 89 degrees 17 minutes 11 seconds East approximately 2,693 feet to a point on the boundary of Pointe Aux Chenes State Wildlife Management Area; thence Southerly, Easterly, Southerly, Easterly, Southerly, Westerly, Southerly, Northwesterly, Southwesterly, Northwesterly, Northeasterly, Northwesterly, Westerly, Northerly, Westerly, Northerly, Westerly, Northerly, Westerly, Northerly, along the said boundary of Pointe Aux Chenes State Wildlife Management Area to a point that intersects a line that bears South 89 degrees 17 minutes 11 seconds West from a point having Coordinates of X = 2,266,759.48 and Y = 295,039.63; thence North 89 degrees 17 minutes 11 seconds East along said line approximately 4,067 feet to the point of beginning, **LESS AND EXCEPT** that portion, if any, that lies within the Pointe Aux Chenes State Wildlife Management Area, containing approximately **7 acres**, all as more particularly outlined on a plat on file in the Office of Mineral Resources, Department of Natural Resources. All bearings, distances and coordinates are based on Louisiana Coordinate System of 1927, (North or South Zone), where applicable.

NOTE: The above description of the Tract nominated for lease has been provided and corrected, where required, exclusively by the nomination party. Any mineral lease selected from this Tract and awarded by the Louisiana State Mineral Board shall be without warranty of any kind, either express, implied, or statutory, including, but not limited to, the implied warranties of merchantability and fitness for a particular purpose. Should the mineral lease awarded by the Louisiana State Mineral Board be subsequently modified, cancelled or abrogated due to the existence of conflicting leases, operating agreements, private claims or other future obligations or conditions which may affect all or any portion of the leased Tract, it shall not relieve the Lessee of the obligation to pay any bonus due thereon to the Louisiana State Mineral Board, nor shall the Louisiana State Mineral Board be obligated to refund any consideration paid by the Lessor prior to such modification, cancellation, or abrogation, including, but not limited to, bonuses, rentals and royalties.

NOTE: The State of Louisiana does hereby reserve, and this lease shall be subject to, the imprescriptible right of surface use in the nature of a servitude in favor of the Department of Natural Resources, including its Offices and Commissions, for the sole purpose of implementing, constructing, servicing and maintaining approved coastal zone management and/or restoration projects. Utilization of any and all rights derived under this lease by the mineral lessee, its agents, successors or assigns,

shall not interfere with nor hinder the reasonable surface use by the Department of Natural Resources, its Offices or Commissions, as herein above reserved.

Applicant: STARKS OIL CORPORATION

Bidder	Cash Payment	Price/ Acre	Rental	Oil	Gas	Other

Legend

08060063

Wildlife

Counties

DOQQ2004

