

**TRACT 39882 - St. Mary Parish, Louisiana**

All of the lands now or formerly constituting the beds and bottoms of all water bodies of every nature and description as to which title is vested in the State of Louisiana, together with all islands arising therein and other lands formed by accretion or by reliction, where allowed by law, excepting tax adjudicated lands, and not presently under mineral lease on June 11, 2008, situated in St. Mary Parish, Louisiana, and more particularly described as follows: Beginning at a point having Coordinates of X = 1,905,509.00 and Y = 379,191.00; thence East 7,924.00 feet to a point having Coordinates of X = 1,913,433.00 and Y = 379,191.00; thence South 8,037.00 feet to a point having Coordinates of X = 1,913,433.00 and Y = 371,154.00; thence West 1,306.00 feet to a point having Coordinates of X = 1,912,127.00 and Y = 371,154.00; thence South 4,030.50 feet to a point having Coordinates of X = 1,912,127.00 and Y = 367,123.50; thence West 3,829.00 feet to a point on the East boundary of State Lease No. 13470 having Coordinates of X = 1,908,298.00 and Y = 367,123.50; thence North 3,449.99 feet along the East boundary of said State Lease No. 13470 to a point on the Southern boundary of State Lease No. 5176, as amended, having Coordinates of X = 1,908,298.00 and Y = 370,573.49; thence along the boundary of said State Lease No. 5176 the following courses: South 73 degrees 52 minutes 35 seconds East 1,255.38 feet; North 4,107.77 feet and West 3,995.00 feet to a point on its North boundary having Coordinates of X = 1,905,509.00 and Y = 374,332.63; thence North 4,858.37 feet to the point of beginning, containing approximately **401 acres**, all as more particularly outlined on a plat on file in the Office of Mineral Resources, Department of Natural Resources. All bearings, distances and coordinates are based on Louisiana Coordinate System of 1927, (North or South Zone), where applicable.

NOTE: The above description of the Tract nominated for lease has been provided and corrected, where required, exclusively by the nomination party. Any mineral lease selected from this Tract and awarded by the Louisiana State Mineral Board shall be without warranty of any kind, either express, implied, or statutory, including, but not limited to, the implied warranties of merchantability and fitness for a particular purpose. Should the mineral lease awarded by the Louisiana State Mineral Board be subsequently modified, cancelled or abrogated due to the existence of conflicting leases, operating agreements, private claims or other future obligations or conditions which may affect all or any portion of the leased Tract, it shall not relieve the Lessee of the obligation to pay any bonus due thereon to the Louisiana State Mineral Board, nor shall the Louisiana State Mineral Board be obligated to refund any consideration paid by the Lessor prior to such modification, cancellation, or abrogation, including, but not limited to, bonuses, rentals and royalties.

NOTE: The State of Louisiana does hereby reserve, and this lease shall be subject to, the imprescriptible right of surface use in the nature of a servitude in favor of the Department of Natural Resources, including its Offices and Commissions, for the sole purpose of implementing, constructing, servicing and maintaining approved coastal zone management

and/or restoration projects. Utilization of any and all rights derived under this lease by the mineral lessee, its agents, successors or assigns, shall not interfere with nor hinder the reasonable surface use by the Department of Natural Resources, its Offices or Commissions, as herein above reserved.

NOTE: The Department of Wildlife and Fisheries has designated certain areas in the coastal waters of the State of Louisiana as Oyster Seed Bed Areas. The exact location of those Seed Bed Areas must be obtained from the Department of Wildlife and Fisheries and any work done under a mineral lease from the State of Louisiana may necessarily be conducted in conformity with the rules and regulations promulgated by the said Department of Wildlife and Fisheries for Oyster Seed Bed Areas.

Applicant: HAROLD J. ANDERSON, INC.

Bidder	Cash Payment	Price/Acre	Rental	Oil	Gas	Other

Legend

08060044

Active\_Leases

DOQQ2004

ST MARY PARISH

T15S - R8E

P.O.B.

SL 5176

SL 13470

SL 17290

ATCHAFALAYA BAY



**TRACT 39883 - St. Mary Parish, Louisiana**

All of the lands now or formerly constituting the beds and bottoms of all water bodies of every nature and description as to which title is vested in the State of Louisiana, together with all islands arising therein and other lands formed by accretion or by reliction, where allowed by law, excepting tax adjudicated lands, and not presently under mineral lease on June 11, 2008, situated in St. Mary Parish, Louisiana, and more particularly described as follows: Beginning at a point having Coordinates of X = 1,893,585.00 and Y = 379,191.00; thence East 4,000.00 feet to a point having Coordinates of X = 1,897,585.00 and Y = 379,191.00; thence South 8,037.00 feet to a point having Coordinates of X = 1,897,585.00 and Y = 371,154.00; thence East 1,306.00 feet to a point having Coordinates of X = 1,898,891.00 and Y = 371,154.00; thence South 4,030.50 feet to a point having Coordinates of X = 1,898,891.00 and Y = 367,123.50; thence West 9,230.00 feet to a point having Coordinates of X = 1,889,661.00 and Y = 367,123.50; thence North 4,030.50 feet to a point having Coordinates of X = 1,889,661.00 and Y = 371,154.00; thence East 3,924.00 feet to a point having Coordinates of X = 1,893,585.00 and Y = 371,154.00; thence North 8,037.00 feet to the point of beginning, containing approximately **1,592.05 acres**, all as more particularly outlined on a plat on file in the Office of Mineral Resources, Department of Natural Resources. All bearings, distances and coordinates are based on Louisiana Coordinate System of 1927, (North or South Zone), where applicable.

NOTE: The above description of the Tract nominated for lease has been provided and corrected, where required, exclusively by the nomination party. Any mineral lease selected from this Tract and awarded by the Louisiana State Mineral Board shall be without warranty of any kind, either express, implied, or statutory, including, but not limited to, the implied warranties of merchantability and fitness for a particular purpose. Should the mineral lease awarded by the Louisiana State Mineral Board be subsequently modified, cancelled or abrogated due to the existence of conflicting leases, operating agreements, private claims or other future obligations or conditions which may affect all or any portion of the leased Tract, it shall not relieve the Lessee of the obligation to pay any bonus due thereon to the Louisiana State Mineral Board, nor shall the Louisiana State Mineral Board be obligated to refund any consideration paid by the Lessor prior to such modification, cancellation, or abrogation, including, but not limited to, bonuses, rentals and royalties.

NOTE: The State of Louisiana does hereby reserve, and this lease shall be subject to, the imprescriptible right of surface use in the nature of a servitude in favor of the Department of Natural Resources, including its Offices and Commissions, for the sole purpose of implementing, constructing, servicing and maintaining approved coastal zone management and/or restoration projects. Utilization of any and all rights derived under this lease by the mineral lessee, its agents, successors or assigns, shall not interfere with nor hinder the reasonable surface use by the

Department of Natural Resources, its Offices or Commissions, as herein above reserved.

NOTE: The Department of Wildlife and Fisheries has designated certain areas in the coastal waters of the State of Louisiana as Oyster Seed Bed Areas. The exact location of those Seed Bed Areas must be obtained from the Department of Wildlife and Fisheries and any work done under a mineral lease from the State of Louisiana may necessarily be conducted in conformity with the rules and regulations promulgated by the said Department of Wildlife and Fisheries for Oyster Seed Bed Areas.

Applicant: HAROLD J. ANDERSON, INC.

Bidder	Cash Payment	Price/Acre	Rental	Oil	Gas	Other

Legend  
08060045  
DOQQ2004

ST MARY PARISH

P.O.B.

ATCHAFALAYA BAY



**TRACT 39884 - St. Mary Parish, Louisiana**

All of the lands now or formerly constituting the beds and bottoms of all water bodies of every nature and description as to which title is vested in the State of Louisiana, together with all islands arising therein and other lands formed by accretion or by reliction, where allowed by law, excepting tax adjudicated lands, and not presently under mineral lease on June 11, 2008, situated in St. Mary Parish, Louisiana, and more particularly described as follows: Beginning at a point on the East boundary of State Lease No. 13470 having Coordinates of X = 1,908,298.00 and Y = 367,123.50; thence East 3,829.00 feet to a point having Coordinates of X = 1,912,127.00 and Y = 367,123.50; thence South 6,697.50 feet to a point having Coordinates of X = 1,912,127.00 and Y = 360,426.00; thence West 1,346.00 feet to a point having Coordinates of X = 1,910,781.00 and Y = 360,426.00; thence South 5,370.00 feet to a point having Coordinates of X = 1,910,781.00 and Y = 355,056.00; thence West 5,272.00 feet to a point having Coordinates of X = 1,905,509.00 and Y = 355,056.00; thence North 10,459.71 feet to a point on the South boundary of State Lease No. 9410, as amended, having Coordinates of X = 1,905,509.00 and Y = 365,515.71; thence South 87 degrees 05 minutes 15 seconds East 1,576.39 feet along the South boundary of said State Lease No. 9410 to a point on the West boundary of State Lease No. 17290 having Coordinates of X = 1,907,083.35 and Y = 365,435.61; thence along the boundary of said State Lease No. 17290 the following courses: South 00 degrees 12 minutes 34 seconds West 3,235.63 feet; East 1,528.48 feet; North 4,045.00 feet and West 302.00 feet to a point on its North boundary, also being the Southeast corner of said State Lease No. 13470 having Coordinates of X = 1,908,298.00 and Y = 366,245.00; thence North 878.50 feet along the East boundary of said State Lease No. 13470 to the point of beginning, containing approximately **289 acres**, all as more particularly outlined on a plat on file in the Office of Mineral Resources, Department of Natural Resources. All bearings, distances and coordinates are based on Louisiana Coordinate System of 1927, (North or South Zone), where applicable.

NOTE: The above description of the Tract nominated for lease has been provided and corrected, where required, exclusively by the nomination party. Any mineral lease selected from this Tract and awarded by the Louisiana State Mineral Board shall be without warranty of any kind, either express, implied, or statutory, including, but not limited to, the implied warranties of merchantability and fitness for a particular purpose. Should the mineral lease awarded by the Louisiana State Mineral Board be subsequently modified, cancelled or abrogated due to the existence of conflicting leases, operating agreements, private claims or other future obligations or conditions which may affect all or any portion of the leased Tract, it shall not relieve the Lessee of the obligation to pay any bonus due thereon to the Louisiana State Mineral Board, nor shall the Louisiana State Mineral Board be obligated to refund any consideration paid by the Lessor prior to such modification, cancellation, or abrogation, including, but not limited to, bonuses, rentals and royalties.

NOTE: The State of Louisiana does hereby reserve, and this lease shall be subject to, the imprescriptible right of surface use in the nature of a servitude in favor of the Department of Natural Resources, including its Offices and Commissions, for the sole purpose of implementing, constructing, servicing and maintaining approved coastal zone management and/or restoration projects. Utilization of any and all rights derived under this lease by the mineral lessee, its agents, successors or assigns, shall not interfere with nor hinder the reasonable surface use by the Department of Natural Resources, its Offices or Commissions, as herein above reserved.

NOTE: The Department of Wildlife and Fisheries has designated certain areas in the coastal waters of the State of Louisiana as Oyster Seed Bed Areas. The exact location of those Seed Bed Areas must be obtained from the Department of Wildlife and Fisheries and any work done under a mineral lease from the State of Louisiana may necessarily be conducted in conformity with the rules and regulations promulgated by the said Department of Wildlife and Fisheries for Oyster Seed Bed Areas.

Applicant: HAROLD J. ANDERSON, INC.

Bidder	Cash Payment	Price/Acre	Rental	Oil	Gas	Other



**Legend**  
08060048  
Active\_Leases  
DOQQ2004

ST MARY PARISH

P.O.B.

SL 13470

SL 17290

SL 9410



ATCHAFALAYA BAY

**TRACT 39885 - St. Mary Parish, Louisiana**

All of the lands now or formerly constituting the beds and bottoms of all water bodies of every nature and description as to which title is vested in the State of Louisiana, together with all islands arising therein and other lands formed by accretion or by reliction, where allowed by law, excepting tax adjudicated lands, and not presently under mineral lease on June 11, 2008, situated in St. Mary Parish, Louisiana, and more particularly described as follows: Beginning at a point having Coordinates of X = 1,889,661.00 and Y = 367,123.50; thence East 9,230.00 feet to a point having Coordinates of X = 1,898,891.00 and Y = 367,123.50; thence South 12,067.50 feet to a point having Coordinates of X = 1,898,891.00 and Y = 355,056.00; thence West 5,230.00 feet to a point having Coordinates of X = 1,893,661.00 and Y = 355,056.00; thence North 5,370.00 feet to a point having Coordinates of X = 1,893,661.00 and Y = 360,426.00; thence West 4,000.00 feet to a point having Coordinates of X = 1,889,661.00 and Y = 360,426.00; thence North 6,697.50 feet to the point of beginning, containing approximately **2,063.89 acres**, all as more particularly outlined on a plat on file in the Office of Mineral Resources, Department of Natural Resources. All bearings, distances and coordinates are based on Louisiana Coordinate System of 1927, (North or South Zone), where applicable.

NOTE: The above description of the Tract nominated for lease has been provided and corrected, where required, exclusively by the nomination party. Any mineral lease selected from this Tract and awarded by the Louisiana State Mineral Board shall be without warranty of any kind, either express, implied, or statutory, including, but not limited to, the implied warranties of merchantability and fitness for a particular purpose. Should the mineral lease awarded by the Louisiana State Mineral Board be subsequently modified, cancelled or abrogated due to the existence of conflicting leases, operating agreements, private claims or other future obligations or conditions which may affect all or any portion of the leased Tract, it shall not relieve the Lessee of the obligation to pay any bonus due thereon to the Louisiana State Mineral Board, nor shall the Louisiana State Mineral Board be obligated to refund any consideration paid by the Lessor prior to such modification, cancellation, or abrogation, including, but not limited to, bonuses, rentals and royalties.

NOTE: The State of Louisiana does hereby reserve, and this lease shall be subject to, the imprescriptible right of surface use in the nature of a servitude in favor of the Department of Natural Resources, including its Offices and Commissions, for the sole purpose of implementing, constructing, servicing and maintaining approved coastal zone management and/or restoration projects. Utilization of any and all rights derived under this lease by the mineral lessee, its agents, successors or assigns, shall not interfere with nor hinder the reasonable surface use by the Department of Natural Resources, its Offices or Commissions, as herein above reserved.

NOTE: The Department of Wildlife and Fisheries has designated certain areas in the coastal waters of the State of Louisiana as Oyster Seed Bed Areas. The exact location of those Seed Bed Areas must be obtained from the Department of Wildlife and Fisheries and any work done under a mineral lease from the State of Louisiana may necessarily be conducted in conformity with the rules and regulations promulgated by the said Department of Wildlife and Fisheries for Oyster Seed Bed Areas.

Applicant: HAROLD J. ANDERSON, INC.

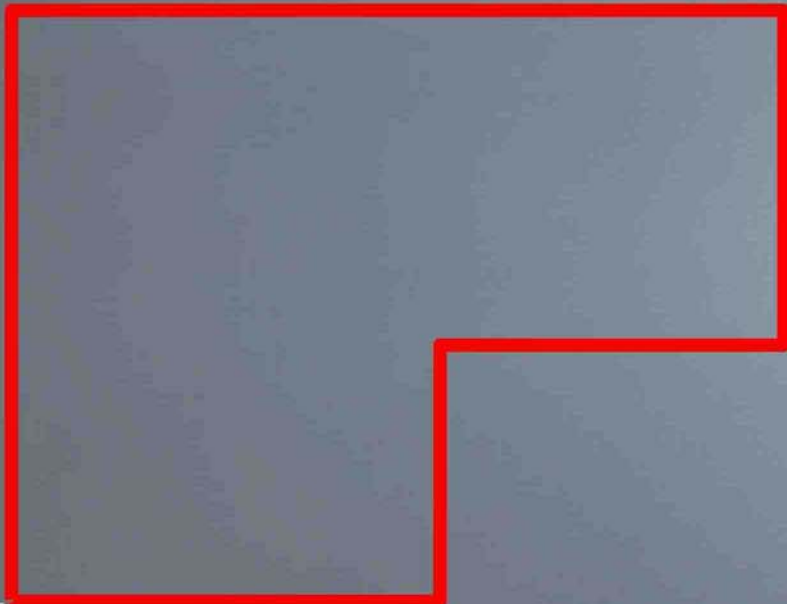
Bidder	Cash Payment	Price/Acre	Rental	Oil	Gas	Other

Legend  
08060046  
DOQQ2004

ST MARY PARISH

ATCHAFALAYA BAY

P.O.B.



**TRACT 39886 - St. Mary Parish, Louisiana**

All of the lands now or formerly constituting the beds and bottoms of all water bodies of every nature and description as to which title is vested in the State of Louisiana, together with all islands arising therein and other lands formed by accretion or by reliction, where allowed by law, excepting tax adjudicated lands, and not presently under mineral lease on June 11, 2008, situated in St. Mary Parish, Louisiana, and more particularly described as follows: Beginning at a point having Coordinates of X = 1,898,891.00 and Y = 367,123.50; thence East 3,473.48 feet to a point on the West boundary of State Lease No. 9410, as amended, having Coordinates of X = 1,902,364.48 and Y = 367,123.50; thence along the boundary of said State Lease No. 9410 the following courses: South 08 degrees 31 minutes 46 seconds East 1,475.26 feet and South 87 degrees 05 minutes 15 seconds East 2,929.49 feet to a point on its South boundary having Coordinates of X = 1,905,509.00 and Y = 365,515.71; thence South 10,459.71 feet to a point having Coordinates of X = 1,905,509.00 and Y = 355,056.00; thence West 6,618.00 feet to a point having Coordinates of X = 1,898,891.00 and Y = 355,056.00; thence North 12,067.50 feet to the point of beginning, containing approximately **1,646 acres**, all as more particularly outlined on a plat on file in the Office of Mineral Resources, Department of Natural Resources. All bearings, distances and coordinates are based on Louisiana Coordinate System of 1927, (North or South Zone), where applicable.

NOTE: The above description of the Tract nominated for lease has been provided and corrected, where required, exclusively by the nomination party. Any mineral lease selected from this Tract and awarded by the Louisiana State Mineral Board shall be without warranty of any kind, either express, implied, or statutory, including, but not limited to, the implied warranties of merchantability and fitness for a particular purpose. Should the mineral lease awarded by the Louisiana State Mineral Board be subsequently modified, cancelled or abrogated due to the existence of conflicting leases, operating agreements, private claims or other future obligations or conditions which may affect all or any portion of the leased Tract, it shall not relieve the Lessee of the obligation to pay any bonus due thereon to the Louisiana State Mineral Board, nor shall the Louisiana State Mineral Board be obligated to refund any consideration paid by the Lessor prior to such modification, cancellation, or abrogation, including, but not limited to, bonuses, rentals and royalties.

NOTE: The State of Louisiana does hereby reserve, and this lease shall be subject to, the imprescriptible right of surface use in the nature of a servitude in favor of the Department of Natural Resources, including its Offices and Commissions, for the sole purpose of implementing, constructing, servicing and maintaining approved coastal zone management and/or restoration projects. Utilization of any and all rights derived under this lease by the mineral lessee, its agents, successors or assigns, shall not interfere with nor hinder the reasonable surface use by the

Department of Natural Resources, its Offices or Commissions, as herein above reserved.

NOTE: The Department of Wildlife and Fisheries has designated certain areas in the coastal waters of the State of Louisiana as Oyster Seed Bed Areas. The exact location of those Seed Bed Areas must be obtained from the Department of Wildlife and Fisheries and any work done under a mineral lease from the State of Louisiana may necessarily be conducted in conformity with the rules and regulations promulgated by the said Department of Wildlife and Fisheries for Oyster Seed Bed Areas.

Applicant: HAROLD J. ANDERSON, INC.

Bidder	Cash Payment	Price/Acre	Rental	Oil	Gas	Other

**Legend**  
08060047  
Active\_Leases  
DOQQ2004

ST MARY PARISH

SL 8091

SL 9410

P.O.B.

ATCHAFALAYA BAY



**TRACT 39887 - Lafourche Parish, Louisiana**

All of the lands now or formerly constituting the beds and bottoms of all water bodies of every nature and description as to which title is vested in the State of Louisiana, together with all islands arising therein and other lands formed by accretion or by reliction, where allowed by law, excepting tax adjudicated lands, and not presently under mineral lease on June 11, 2008, situated in Lafourche Parish, Louisiana, and more particularly described as follows: Beginning at a Point having Coordinates of X = 2,306,345.44 and Y = 312,796.49; thence South 88 degrees 12 minutes 07 seconds West 2,371.72 feet to a point having Coordinates of X = 2,303,974.89 and Y = 312,722.07; thence South 01 degrees 11 minutes 28 seconds East 242.61 feet to a point having Coordinates of X = 2,303,979.93 and Y = 312,479.52; thence South 88 degrees 41 minutes 54 seconds West 16,106.03 feet to a point having Coordinates of X = 2,287,878.06 and Y = 312,113.64; thence North 00 degrees 55 minutes 26 seconds West 13,316.97 feet to a point having Coordinates of X = 2,287,663.32 and Y = 325,428.88; thence East 18,480.00 feet to a point having Coordinates of X = 2,306,143.32 and Y = 325,428.88; thence South 00 degrees 55 minutes 00 seconds East 12,634.01 feet to the point of beginning, containing approximately **63 acres**, all as more particularly outlined on a plat on file in the Office of Mineral Resources, Department of Natural Resources. All bearings, distances and coordinates are based on Louisiana Coordinate System of 1927, (North or South Zone), where applicable.

NOTE: The above description of the Tract nominated for lease has been provided and corrected, where required, exclusively by the nomination party. Any mineral lease selected from this Tract and awarded by the Louisiana State Mineral Board shall be without warranty of any kind, either express, implied, or statutory, including, but not limited to, the implied warranties of merchantability and fitness for a particular purpose. Should the mineral lease awarded by the Louisiana State Mineral Board be subsequently modified, cancelled or abrogated due to the existence of conflicting leases, operating agreements, private claims or other future obligations or conditions which may affect all or any portion of the leased Tract, it shall not relieve the Lessee of the obligation to pay any bonus due thereon to the Louisiana State Mineral Board, nor shall the Louisiana State Mineral Board be obligated to refund any consideration paid by the Lessor prior to such modification, cancellation, or abrogation, including, but not limited to, bonuses, rentals and royalties.

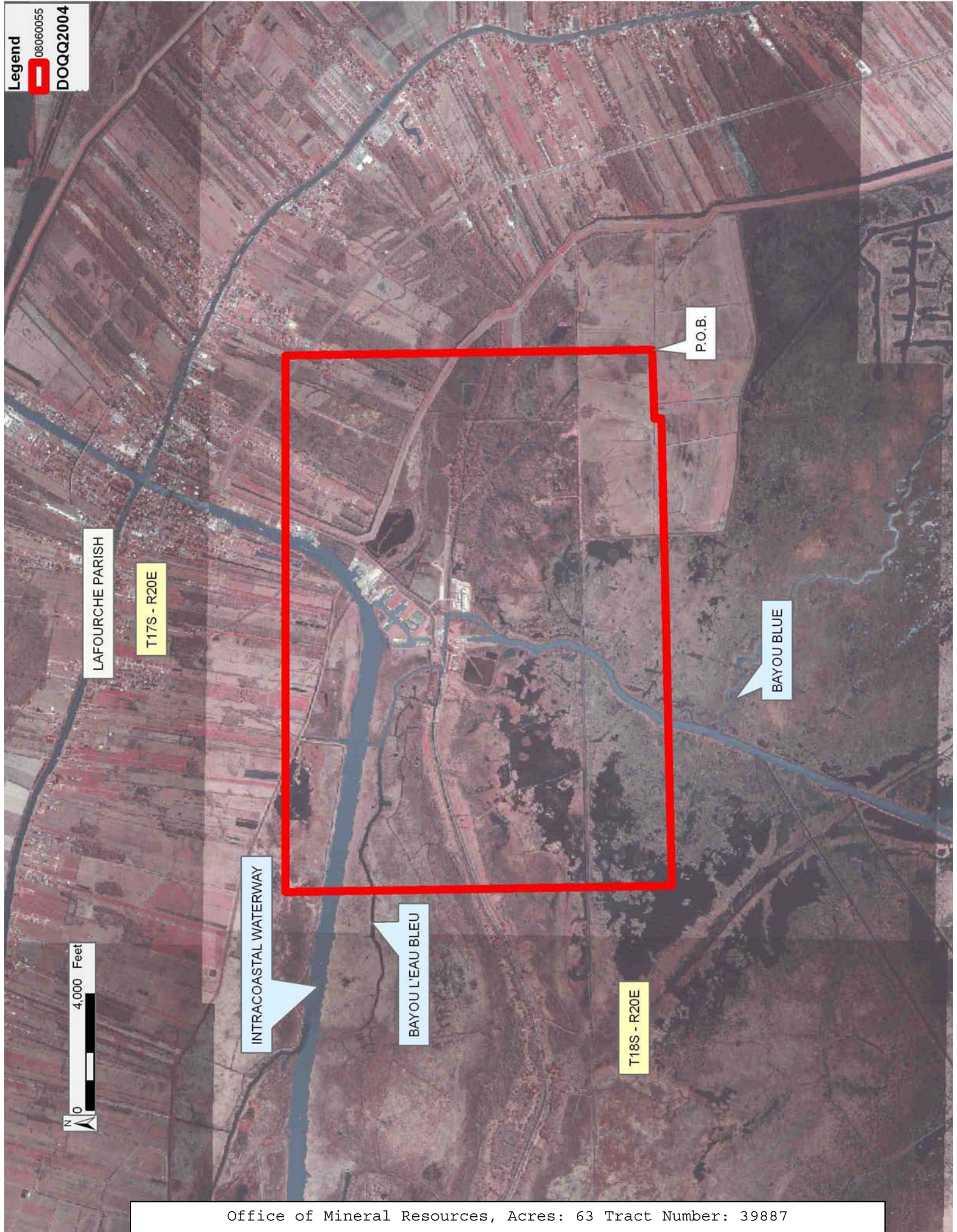
NOTE: The State of Louisiana does hereby reserve, and this lease shall be subject to, the imprescriptible right of surface use in the nature of a servitude in favor of the Department of Natural Resources, including its Offices and Commissions, for the sole purpose of implementing, constructing, servicing and maintaining approved coastal zone management and/or restoration projects. Utilization of any and all rights derived under this lease by the mineral lessee, its agents, successors or assigns, shall not interfere with nor hinder the reasonable surface use by the



Department of Natural Resources, its Offices or Commissions, as herein above reserved.

Applicant: STARKS OIL CORPORATION

Bidder	Cash Payment	Price/Acre	Rental	Oil	Gas	Other



LAFOURCHE PARISH

T17S - R20E

P.O.B.

BAYOU BLUE

INTRACOASTAL WATERWAY

BAYOU L'EAU BLEU

T18S - R20E



**TRACT 39888 - Lafourche Parish, Louisiana**

All of the lands now or formerly constituting the beds and bottoms of all water bodies of every nature and description as to which title is vested in the State of Louisiana, together with all islands arising therein and other lands formed by accretion or by reliction, where allowed by law, excepting tax adjudicated lands, and not presently under mineral lease on June 11, 2008, situated in Lafourche Parish, Louisiana, and more particularly described as follows: Beginning at a Point having Coordinates of X = 2,271,774.86 and Y = 325,428.88; Thence East 15,888.46 feet to a point having Coordinates of X = 2,287,663.32 and Y = 325,428.88; Thence South 00 degrees 55 minutes 26 seconds East 13,316.97 feet to a point having Coordinates of X = 2,287,878.06 and Y = 312,113.64; Thence South 88 degrees 41 minutes 54 seconds West 15,931.66 feet to a point having Coordinates of X = 2,271,950.51 and Y = 311,751.74; Thence North 00 degrees 44 minutes 09 seconds West 13,678.27 feet to the point of beginning, containing approximately **35 acres**, all as more particularly outlined on a plat on file in the Office of Mineral Resources, Department of Natural Resources. All bearings, distances and coordinates are based on Louisiana Coordinate System of 1927, (North or South Zone), where applicable.

NOTE: The above description of the Tract nominated for lease has been provided and corrected, where required, exclusively by the nomination party. Any mineral lease selected from this Tract and awarded by the Louisiana State Mineral Board shall be without warranty of any kind, either express, implied, or statutory, including, but not limited to, the implied warranties of merchantability and fitness for a particular purpose. Should the mineral lease awarded by the Louisiana State Mineral Board be subsequently modified, cancelled or abrogated due to the existence of conflicting leases, operating agreements, private claims or other future obligations or conditions which may affect all or any portion of the leased Tract, it shall not relieve the Lessee of the obligation to pay any bonus due thereon to the Louisiana State Mineral Board, nor shall the Louisiana State Mineral Board be obligated to refund any consideration paid by the Lessor prior to such modification, cancellation, or abrogation, including, but not limited to, bonuses, rentals and royalties.

NOTE: The State of Louisiana does hereby reserve, and this lease shall be subject to, the imprescriptible right of surface use in the nature of a servitude in favor of the Department of Natural Resources, including its Offices and Commissions, for the sole purpose of implementing, constructing, servicing and maintaining approved coastal zone management and/or restoration projects. Utilization of any and all rights derived under this lease by the mineral lessee, its agents, successors or assigns, shall not interfere with nor hinder the reasonable surface use by the Department of Natural Resources, its Offices or Commissions, as herein above reserved.

Applicant: STARKS OIL CORPORATION

Bidder	Cash Payment	Price/Acre	Rental	Oil	Gas	Other



LAFOURCHE PARISH

T17S - R20E

T18S - R20E

BAYOU L'EAU BLEU

BAYOU BLUE

P.O.B.

INTRACOASTAL WATERWAY

N  
0  
4,000 Feet

**TRACT 39889 - Lafourche Parish, Louisiana**

All of the lands now or formerly constituting the beds and bottoms of all water bodies of every nature and description as to which title is vested in the State of Louisiana, together with all islands arising therein and other lands formed by accretion or by reliction, where allowed by law, excepting tax adjudicated lands, and not presently under mineral lease on June 11, 2008, situated in Lafourche Parish, Louisiana, and more particularly described as follows: Beginning at a Point having Coordinates of X = 2,257,400.00 and Y = 310,719.75; thence North 12,780.26 feet to a point having Coordinates of X = 2,257,400.00 and Y = 323,500.00; thence West 2,040.39 feet to a point having Coordinates of X = 2,255,359.61 and Y = 323,500.00; thence North 01 degrees 21 minutes 17 seconds West 1,929.42 feet to a point having Coordinates of X = 2,255,314.00 and Y = 325,428.88; thence East 16,460.86 feet to a point having Coordinates of X = 2,271,774.86 and Y = 325,428.88; thence South 00 degrees 44 minutes 09 seconds East 14,389.13 feet to a point having Coordinates of X = 2,271,959.64 and Y = 311,040.94; thence South 88 degrees 44 minutes 10 seconds West 14,563.18 feet to the point of beginning, containing approximately **11 acres**, all as more particularly outlined on a plat on file in the Office of Mineral Resources, Department of Natural Resources. All bearings, distances and coordinates are based on Louisiana Coordinate System of 1927, (North or South Zone), where applicable.

NOTE: The above description of the Tract nominated for lease has been provided and corrected, where required, exclusively by the nomination party. Any mineral lease selected from this Tract and awarded by the Louisiana State Mineral Board shall be without warranty of any kind, either express, implied, or statutory, including, but not limited to, the implied warranties of merchantability and fitness for a particular purpose. Should the mineral lease awarded by the Louisiana State Mineral Board be subsequently modified, cancelled or abrogated due to the existence of conflicting leases, operating agreements, private claims or other future obligations or conditions which may affect all or any portion of the leased Tract, it shall not relieve the Lessee of the obligation to pay any bonus due thereon to the Louisiana State Mineral Board, nor shall the Louisiana State Mineral Board be obligated to refund any consideration paid by the Lessor prior to such modification, cancellation, or abrogation, including, but not limited to, bonuses, rentals and royalties.

NOTE: The State of Louisiana does hereby reserve, and this lease shall be subject to, the imprescriptible right of surface use in the nature of a servitude in favor of the Department of Natural Resources, including its Offices and Commissions, for the sole purpose of implementing, constructing, servicing and maintaining approved coastal zone management and/or restoration projects. Utilization of any and all rights derived under this lease by the mineral lessee, its agents, successors or assigns, shall not interfere with nor hinder the reasonable surface use by the Department of Natural Resources, its Offices or Commissions, as herein above reserved.

Applicant: STARKS OIL CORPORATION

Bidder	Cash Payment	Price/Acre	Rental	Oil	Gas	Other

INTRACOASTAL WATERWAY

BAYOU BLUE

LAFOURCHE PARISH

T17S - R19E

0 3,000 Feet

P.O.B.

T18S - R19E





**TRACT 39890 - Lafourche Parish, Louisiana**

All of the lands now or formerly constituting the beds and bottoms of all water bodies of every nature and description as to which title is vested in the State of Louisiana, together with all islands arising therein and other lands formed by accretion or by reliction, where allowed by law, excepting tax adjudicated lands, and not presently under mineral lease on June 11, 2008, situated in Lafourche Parish, Louisiana, and more particularly described as follows: Beginning at a Point having Coordinates of X = 2,306,345.44 and Y = 312,796.49; thence North 00 degrees 55 minutes 00 seconds West 10,536.47 feet to a point having Coordinates of X = 2,306,176.87 and Y = 323,331.61; thence North 88 degrees 42 minutes 12 seconds East 16,936.30 feet to a point having Coordinates of X = 2,323,108.83 and Y = 323,714.85; thence South 10,707.13 feet to a point having Coordinates of X = 2,323,108.83 and Y = 313,007.72; thence South 89 degrees 16 minutes 41 seconds West 16,764.72 feet to the point of beginning, containing approximately **53 acres**, all as more particularly outlined on a plat on file in the Office of Mineral Resources, Department of Natural Resources. All bearings, distances and coordinates are based on Louisiana Coordinate System of 1927, (North or South Zone), where applicable.

NOTE: The above description of the Tract nominated for lease has been provided and corrected, where required, exclusively by the nomination party. Any mineral lease selected from this Tract and awarded by the Louisiana State Mineral Board shall be without warranty of any kind, either express, implied, or statutory, including, but not limited to, the implied warranties of merchantability and fitness for a particular purpose. Should the mineral lease awarded by the Louisiana State Mineral Board be subsequently modified, cancelled or abrogated due to the existence of conflicting leases, operating agreements, private claims or other future obligations or conditions which may affect all or any portion of the leased Tract, it shall not relieve the Lessee of the obligation to pay any bonus due thereon to the Louisiana State Mineral Board, nor shall the Louisiana State Mineral Board be obligated to refund any consideration paid by the Lessor prior to such modification, cancellation, or abrogation, including, but not limited to, bonuses, rentals and royalties.

NOTE: The State of Louisiana does hereby reserve, and this lease shall be subject to, the imprescriptible right of surface use in the nature of a servitude in favor of the Department of Natural Resources, including its Offices and Commissions, for the sole purpose of implementing, constructing, servicing and maintaining approved coastal zone management and/or restoration projects. Utilization of any and all rights derived under this lease by the mineral lessee, its agents, successors or assigns, shall not interfere with nor hinder the reasonable surface use by the Department of Natural Resources, its Offices or Commissions, as herein above reserved.

Applicant: STARKS OIL CORPORATION

Bidder	Cash Payment	Price/Acre	Rental	Oil	Gas	Other

LAFOURCHE PARISH

T17S - R21E

T18S - R21E

BAYOU LAFOURCHE

P.O.B.



**TRACT 39891 - Lafourche and Terrebonne Parishes, Louisiana**

All of the lands now or formerly constituting the beds and bottoms of all water bodies of every nature and description as to which title is vested in the State of Louisiana, together with all islands arising therein and other lands formed by accretion or by reliction, where allowed by law, excepting tax adjudicated lands, and not presently under mineral lease on June 11, 2008, situated in Lafourche and Terrebonne Parishes, Louisiana, and more particularly described as follows: Beginning at a point having Coordinates of X = 2,239,400.00 and Y = 305,500.00; thence North 18,000.00 feet to a point having Coordinates of X = 2,239,400.00 and Y = 323,500.00; thence East 18,000.00 feet to a point having Coordinates of X = 2,257,400.00 and Y = 323,500.00; thence South 18,000.00 feet to a point having Coordinates of X = 2,257,400.00 and Y = 305,500.00; thence West 18,000.00 feet to the point of beginning, containing approximately **50 acres**, all as more particularly outlined on a plat on file in the Office of Mineral Resources, Department of Natural Resources. All bearings, distances and coordinates are based on Louisiana Coordinate System of 1927, (North or South Zone), where applicable.

NOTE: The above description of the Tract nominated for lease has been provided and corrected, where required, exclusively by the nomination party. Any mineral lease selected from this Tract and awarded by the Louisiana State Mineral Board shall be without warranty of any kind, either express, implied, or statutory, including, but not limited to, the implied warranties of merchantability and fitness for a particular purpose. Should the mineral lease awarded by the Louisiana State Mineral Board be subsequently modified, cancelled or abrogated due to the existence of conflicting leases, operating agreements, private claims or other future obligations or conditions which may affect all or any portion of the leased Tract, it shall not relieve the Lessee of the obligation to pay any bonus due thereon to the Louisiana State Mineral Board, nor shall the Louisiana State Mineral Board be obligated to refund any consideration paid by the Lessor prior to such modification, cancellation, or abrogation, including, but not limited to, bonuses, rentals and royalties.

NOTE: The State of Louisiana does hereby reserve, and this lease shall be subject to, the imprescriptible right of surface use in the nature of a servitude in favor of the Department of Natural Resources, including its Offices and Commissions, for the sole purpose of implementing, constructing, servicing and maintaining approved coastal zone management and/or restoration projects. Utilization of any and all rights derived under this lease by the mineral lessee, its agents, successors or assigns, shall not interfere with nor hinder the reasonable surface use by the Department of Natural Resources, its Offices or Commissions, as herein above reserved.

Applicant: ROBERT A. SCHROEDER, INC.

Bidder	Cash Payment	Price/Acre	Rental	Oil	Gas	Other

**Legend**  
08060017  
Counties  
DOQQ2004

