

**TRACT 39872 - Winn Parish, Louisiana**

All of the lands now or formerly constituting the beds and bottoms of all water bodies of every nature and description as to which title is vested in the State of Louisiana, together with all islands arising therein and other lands formed by accretion or by reliction, where allowed by law, excepting tax adjudicated lands, and not presently under mineral lease on June 11, 2008, situated in Winn Parish, Louisiana, and more particularly described as follows: Beginning at a point having Coordinates of X = 1,920,701.35 and Y = 489,863.23; thence South 85 degrees 04 minutes 46 seconds East 5,241.01 feet to a point having Coordinates of X = 1,925,923.04 and Y = 489,413.68; thence South 82 degrees 09 minutes 04 seconds East 5,255.92 feet to a point having Coordinates of X = 1,931,129.72 and Y = 488,695.94; thence South 00 degrees 10 minutes 08 seconds West 3,229.84 feet to a point having Coordinates of X = 1,931,120.21 and Y = 485,466.11; thence South 02 degrees 30 minutes 26 seconds East 2,091.77 feet to a point having Coordinates of X = 1,931,211.71 and Y = 483,376.33; thence North 68 degrees 07 minutes 52 seconds West 5,654.49 feet to a point having Coordinates of X = 1,925,964.12 and Y = 485,482.53; thence North 69 degrees 22 minutes 33 seconds West 5,603.14 feet to a point having Coordinates of X = 1,920,720.08 and Y = 487,456.17; thence North 00 degrees 26 minutes 46 seconds West 2,407.13 feet to the point of beginning, containing approximately **26 acres**, all as more particularly outlined on a plat on file in the Office of Mineral Resources, Department of Natural Resources. All bearings, distances and coordinates are based on Louisiana Coordinate System of 1927, (North or South Zone), where applicable.

NOTE: The above description of the Tract nominated for lease has been provided and corrected, where required, exclusively by the nomination party. Any mineral lease selected from this Tract and awarded by the Louisiana State Mineral Board shall be without warranty of any kind, either express, implied, or statutory, including, but not limited to, the implied warranties of merchantability and fitness for a particular purpose. Should the mineral lease awarded by the Louisiana State Mineral Board be subsequently modified, cancelled or abrogated due to the existence of conflicting leases, operating agreements, private claims or other future obligations or conditions which may affect all or any portion of the leased Tract, it shall not relieve the Lessee of the obligation to pay any bonus due thereon to the Louisiana State Mineral Board, nor shall the Louisiana State Mineral Board be obligated to refund any consideration paid by the Lessor prior to such modification, cancellation, or abrogation, including, but not limited to, bonuses, rentals and royalties.

Bidder	Cash Payment	Price/Acre	Rental	Oil	Gas	Other


Applicant: ASLAN, L.L.C.



WINN PARISH

T12N - R4W

T12N - R4W

P.O.B.

DUGDEMONA RIVER





**TRACT 39873 - Winn Parish, Louisiana**

All of the lands now or formerly constituting the beds and bottoms of all water bodies of every nature and description as to which title is vested in the State of Louisiana, together with all islands arising therein and other lands formed by accretion or by reliction, where allowed by law, excepting tax adjudicated lands, and not presently under mineral lease on June 11, 2008, situated in Winn Parish, Louisiana, and more particularly described as follows: Beginning at a point having Coordinates of X = 1,931,129.72 and Y = 488,695.94; thence South 00 degrees 10 minutes 08 West 3,229.84 feet to a point having Coordinates of X = 1,931,120.21 and Y = 485,466.11; thence South 02 degrees 30 minutes 26 seconds East 2,091.77 feet to a point having Coordinates of X = 1,931,211.71 and Y = 483,376.33; thence South 76 degrees 00 minutes 58 seconds East 2,564.57 feet to a point having Coordinates of X = 1,933,700.28 and Y = 482,756.60; thence South 74 degrees 45 minutes 45 seconds East 2,870.97 feet to a point having Coordinates of X = 1,936,470.32 and Y = 482,002.06; thence North 02 degrees 17 minutes 34 seconds West 2,257.64 feet to a point having Coordinates of X = 1,936,380.00 and Y = 484,257.89; thence North 41 degrees 26 minutes 01 seconds West 2,754.21 feet to a point having Coordinates of X = 1,934,557.39 and Y = 486,322.78; thence North 47 degrees 46 minutes 45 seconds West 2,604.68 feet to a point having Coordinates of X = 1,932,628.46 and Y = 488,073.10; thence North 67 degrees 26 minutes 01 seconds West 1,623.01 feet to the point of beginning, containing approximately **12 acres**, all as more particularly outlined on a plat on file in the Office of Mineral Resources, Department of Natural Resources. All bearings, distances and coordinates are based on Louisiana Coordinate System of 1927, (North or South Zone), where applicable.

NOTE: The above description of the Tract nominated for lease has been provided and corrected, where required, exclusively by the nomination party. Any mineral lease selected from this Tract and awarded by the Louisiana State Mineral Board shall be without warranty of any kind, either express, implied, or statutory, including, but not limited to, the implied warranties of merchantability and fitness for a particular purpose. Should the mineral lease awarded by the Louisiana State Mineral Board be subsequently modified, cancelled or abrogated due to the existence of conflicting leases, operating agreements, private claims or other future obligations or conditions which may affect all or any portion of the leased Tract, it shall not relieve the Lessee of the obligation to pay any bonus due thereon to the Louisiana State Mineral Board, nor shall the Louisiana State Mineral Board be obligated to refund any consideration paid by the Lessor prior to such modification, cancellation, or abrogation, including, but not limited to, bonuses, rentals and royalties.

Applicant: ASLAN, L.L.C.

Bidder	Cash Payment	Price/Acre	Rental	Oil	Gas	Other



WINN PARISH

T12N - R3W

DUGDEMONA RIVER

P.O.B.

T12N - R4W





**TRACT 39874 - Concordia Parish, Louisiana**

All of the lands now or formerly constituting the beds and bottoms of all water bodies of every nature and description as to which title is vested in the State of Louisiana, together with all islands arising therein and other lands formed by accretion or by reliction, where allowed by law, excepting tax adjudicated lands, and not presently under mineral lease on June 11, 2008, situated in Concordia Parish, Louisiana, and more particularly described as follows: Beginning at a point having Coordinates of X = 2,304,786.60 and Y = 230,911.90; thence East 5,001.66 feet to a point having Coordinates of X = 2,309,788.26 and Y = 230,911.90; thence South 13 degrees 49 minutes 43 seconds West 5,976.35 feet to a point having Coordinates of X = 2,308,359.80 and Y = 225,108.78; thence West 3,573.20 feet to a point having Coordinates of X = 2,304,786.60 and Y = 225,108.78; thence North 5,803.12 feet to the point of beginning, containing approximately **270 acres**, all as more particularly outlined on a plat on file in the Office of Mineral Resources, Department of Natural Resources. All bearings, distances and coordinates are based on Louisiana Coordinate System of 1927, (North or South Zone), where applicable.

NOTE: The above description of the Tract nominated for lease has been provided and corrected, where required, exclusively by the nomination party. Any mineral lease selected from this Tract and awarded by the Louisiana State Mineral Board shall be without warranty of any kind, either express, implied, or statutory, including, but not limited to, the implied warranties of merchantability and fitness for a particular purpose. Should the mineral lease awarded by the Louisiana State Mineral Board be subsequently modified, cancelled or abrogated due to the existence of conflicting leases, operating agreements, private claims or other future obligations or conditions which may affect all or any portion of the leased Tract, it shall not relieve the Lessee of the obligation to pay any bonus due thereon to the Louisiana State Mineral Board, nor shall the Louisiana State Mineral Board be obligated to refund any consideration paid by the Lessor prior to such modification, cancellation, or abrogation, including, but not limited to, bonuses, rentals and royalties.

Applicant: J. W. SEIBERT, III

Bidder	Cash Payment	Price/Acre	Rental	Oil	Gas	Other





**TRACT 39875 - Vermilion Parish, Louisiana**

All of the lands now or formerly constituting the beds and bottoms of all water bodies of every nature and description as to which title is vested in the State of Louisiana, together with all islands arising therein and other lands formed by accretion or by reliction, where allowed by law, excepting tax adjudicated lands, and not presently under mineral lease on June 11, 2008, situated in Vermilion Parish, Louisiana, and more particularly described as follows: Beginning at the Northeast corner of State Lease No. 19105 having Coordinates of X = 1,756,630.00 and Y = 487,222.00; thence West 3,218.79 feet along the North boundary of said State Lease No. 19105 to a point having Coordinates of X = 1,753,411.22 and Y = 487,222.00; thence North 6,458.42 feet to a point having Coordinates of X = 1,753,411.22 and Y = 493,680.42; thence East 10,000.00 feet to a point having Coordinates of X = 1,763,411.22 and Y = 493,680.42; thence South 81 degrees 32 minutes 08 seconds East 5,280.00 feet to a point having Coordinates of X = 1,768,633.70 and Y = 492,903.23; thence South 5,681.23 feet to a point having Coordinates of X = 1,768,633.70 and Y = 487,222.00; thence West 12,003.70 feet to the point of beginning, containing approximately **52 acres**, all as more particularly outlined on a plat on file in the Office of Mineral Resources, Department of Natural Resources. All bearings, distances and coordinates are based on Louisiana Coordinate System of 1927, (North or South Zone), where applicable.

NOTE: The above description of the Tract nominated for lease has been provided and corrected, where required, exclusively by the nomination party. Any mineral lease selected from this Tract and awarded by the Louisiana State Mineral Board shall be without warranty of any kind, either express, implied, or statutory, including, but not limited to, the implied warranties of merchantability and fitness for a particular purpose. Should the mineral lease awarded by the Louisiana State Mineral Board be subsequently modified, cancelled or abrogated due to the existence of conflicting leases, operating agreements, private claims or other future obligations or conditions which may affect all or any portion of the leased Tract, it shall not relieve the Lessee of the obligation to pay any bonus due thereon to the Louisiana State Mineral Board, nor shall the Louisiana State Mineral Board be obligated to refund any consideration paid by the Lessor prior to such modification, cancellation, or abrogation, including, but not limited to, bonuses, rentals and royalties.

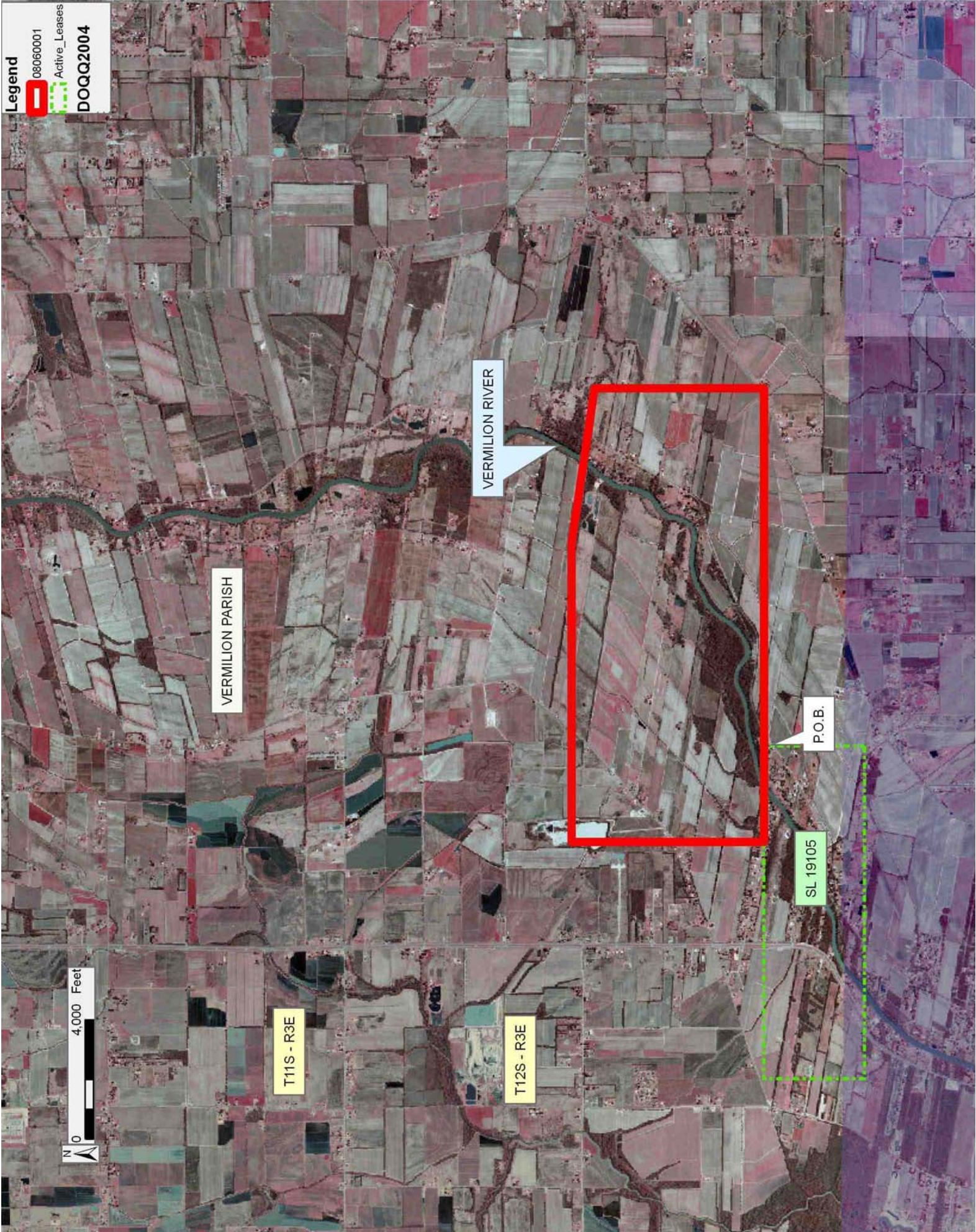
NOTE: The State of Louisiana does hereby reserve, and this lease shall be subject to, the imprescriptible right of surface use in the nature of a servitude in favor of the Department of Natural Resources, including its Offices and Commissions, for the sole purpose of implementing, constructing, servicing and maintaining approved coastal zone management and/or restoration projects. Utilization of any and all rights derived under this lease by the mineral lessee, its agents, successors or assigns, shall not interfere with nor hinder the reasonable surface use by the Department of Natural Resources, its Offices or Commissions, as herein above reserved.

Applicant: LAFAYETTE LAND SERVICES LLC

Bidder	Cash Payment	Price/Acre	Rental	Oil	Gas	Other



**Legend**  
08060001  
Active\_Leases  
DOQQ2004





**TRACT 39876 - Assumption Parish, Louisiana**

All of the lands now or formerly constituting the beds and bottoms of all water bodies of every nature and description as to which title is vested in the State of Louisiana, together with all islands arising therein and other lands formed by accretion or by reliction, where allowed by law, excepting tax adjudicated lands, and not presently under mineral lease on June 11, 2008, situated in Assumption Parish, Louisiana, and more particularly described as follows: Beginning at a point having Coordinates of X = 2,062,000.00 and Y = 465,565.07; thence South approximately 5,114 feet to a point on the boundary of the Elm Hall Wildlife Management Area having Coordinates of X = 2,062,000.00; thence Westerly, Southwesterly and Southeasterly along the meanders of the boundary of said Elm Hall Wildlife Management Area to a point of intersection with an East-West line having a Coordinate of Y = 455,265.07; thence West approximately 2,933 feet to a point having Coordinates of X = 2,056,600.00 and Y = 455,265.07; thence North 1,734.93 feet to the Southeast corner of State Lease No. 17777 having Coordinates of X = 2,056,600.00 and Y = 457,000.00; thence along the boundary of said State Lease No. 17777 the following courses: North 3,600.00 feet to its Northeast corner having Coordinates of X = 2,056,600.00 and Y = 460,600.00 and South 78 degrees 29 minutes 52 seconds West 9,583.47 feet to its Northwest corner having Coordinates of X = 2,047,209.00 and Y = 458,689.00; thence West 909.00 feet to a point having Coordinates of X = 2,046,300.00 and Y = 458,689.00; thence North 6,876.07 feet to the Southeast corner of State Lease No. 19019 having Coordinates of X = 2,046,300.00 and Y = 465,565.07; thence East 15,700.00 feet to the point of beginning, **LESS AND EXCEPT** that portion, if any, of the Elm Hall Wildlife Management Area which may lie within the above described tract, containing approximately **1,466 acres**, all as more particularly outlined on a plat on file in the Office of Mineral Resources, Department of Natural Resources. All bearings, distances and coordinates are based on Louisiana Coordinate System of 1927, (North or South Zone), where applicable.

NOTE: The above description of the Tract nominated for lease has been provided and corrected, where required, exclusively by the nomination party. Any mineral lease selected from this Tract and awarded by the Louisiana State Mineral Board shall be without warranty of any kind, either express, implied, or statutory, including, but not limited to, the implied warranties of merchantability and fitness for a particular purpose. Should the mineral lease awarded by the Louisiana State Mineral Board be subsequently modified, cancelled or abrogated due to the existence of conflicting leases, operating agreements, private claims or other future obligations or conditions which may affect all or any portion of the leased Tract, it shall not relieve the Lessee of the obligation to pay any bonus due thereon to the Louisiana State Mineral Board, nor shall the Louisiana State Mineral Board be obligated to refund any consideration paid by the Lessor prior to such modification, cancellation, or abrogation, including, but not limited to, bonuses, rentals and royalties.






NOTE: The State of Louisiana does hereby reserve, and this lease shall be subject to, the imprescriptible right of surface use in the nature of a servitude in favor of the Department of Natural Resources, including its Offices and Commissions, for the sole purpose of implementing, constructing, servicing and maintaining approved coastal zone management and/or restoration projects. Utilization of any and all rights derived under this lease by the mineral lessee, its agents, successors or assigns, shall not interfere with nor hinder the reasonable surface use by the Department of Natural Resources, its Offices or Commissions, as herein above reserved.

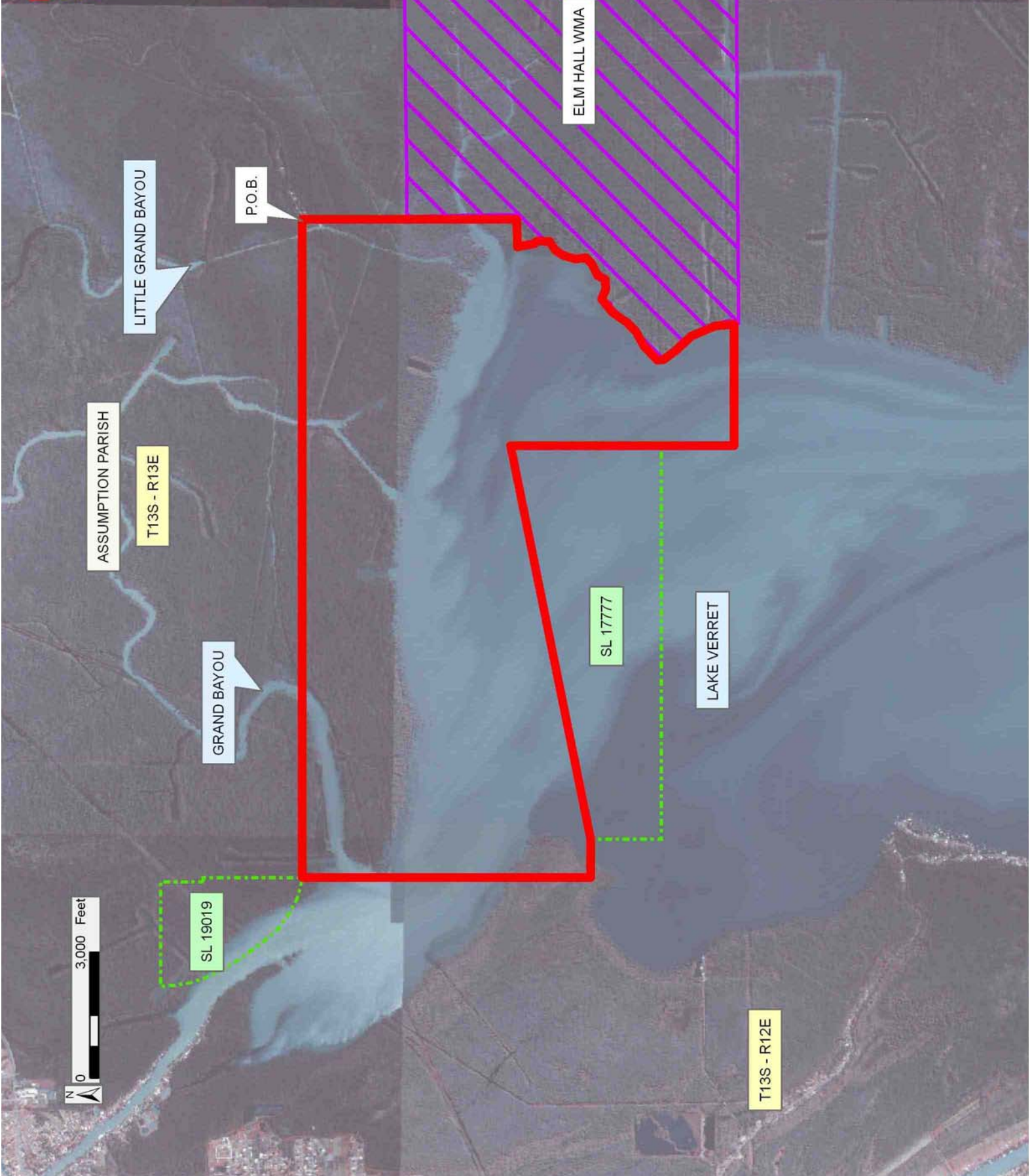
Applicant: SUNCOAST LAND SERVICES, INC.

Bidder	Cash Payment	Price/Acre	Rental	Oil	Gas	Other

**Legend**

-  08060024
-  Wildlife
-  Active\_Leases

**DOQQ2004**





**TRACT 39877 - Assumption Parish, Louisiana**

All of the lands now or formerly constituting the beds and bottoms of all water bodies of every nature and description as to which title is vested in the State of Louisiana, together with all islands arising therein and other lands formed by accretion or by reliction, where allowed by law, excepting tax adjudicated lands, and not presently under mineral lease on June 11, 2008, situated in Assumption Parish, Louisiana, and more particularly described as follows: Beginning at a point having Coordinates of X = 2,043,709.00 and Y = 458,689.00; thence East 3,500.00 feet to the Northwest corner of State Lease No. 17777 having Coordinates of X = 2,047,209.00 and Y = 458,689.00; thence South 1,689.00 feet along the West boundary of said State Lease No. 17777 to its Southwest corner having Coordinates of X = 2,047,209.00 and Y = 457,000.00; thence South 2,311.00 feet to a point having Coordinates of X = 2,047,209.00 and Y = 454,689.00; thence West 3,500.00 feet to a point having Coordinates of X = 2,043,709.00 and Y = 454,689.00; thence North 4,000.00 feet to the point of beginning, containing approximately **238 acres**, all as more particularly outlined on a plat on file in the Office of Mineral Resources, Department of Natural Resources. All bearings, distances and coordinates are based on Louisiana Coordinate System of 1927, (North or South Zone), where applicable.

NOTE: The above description of the Tract nominated for lease has been provided and corrected, where required, exclusively by the nomination party. Any mineral lease selected from this Tract and awarded by the Louisiana State Mineral Board shall be without warranty of any kind, either express, implied, or statutory, including, but not limited to, the implied warranties of merchantability and fitness for a particular purpose. Should the mineral lease awarded by the Louisiana State Mineral Board be subsequently modified, cancelled or abrogated due to the existence of conflicting leases, operating agreements, private claims or other future obligations or conditions which may affect all or any portion of the leased Tract, it shall not relieve the Lessee of the obligation to pay any bonus due thereon to the Louisiana State Mineral Board, nor shall the Louisiana State Mineral Board be obligated to refund any consideration paid by the Lessor prior to such modification, cancellation, or abrogation, including, but not limited to, bonuses, rentals and royalties.

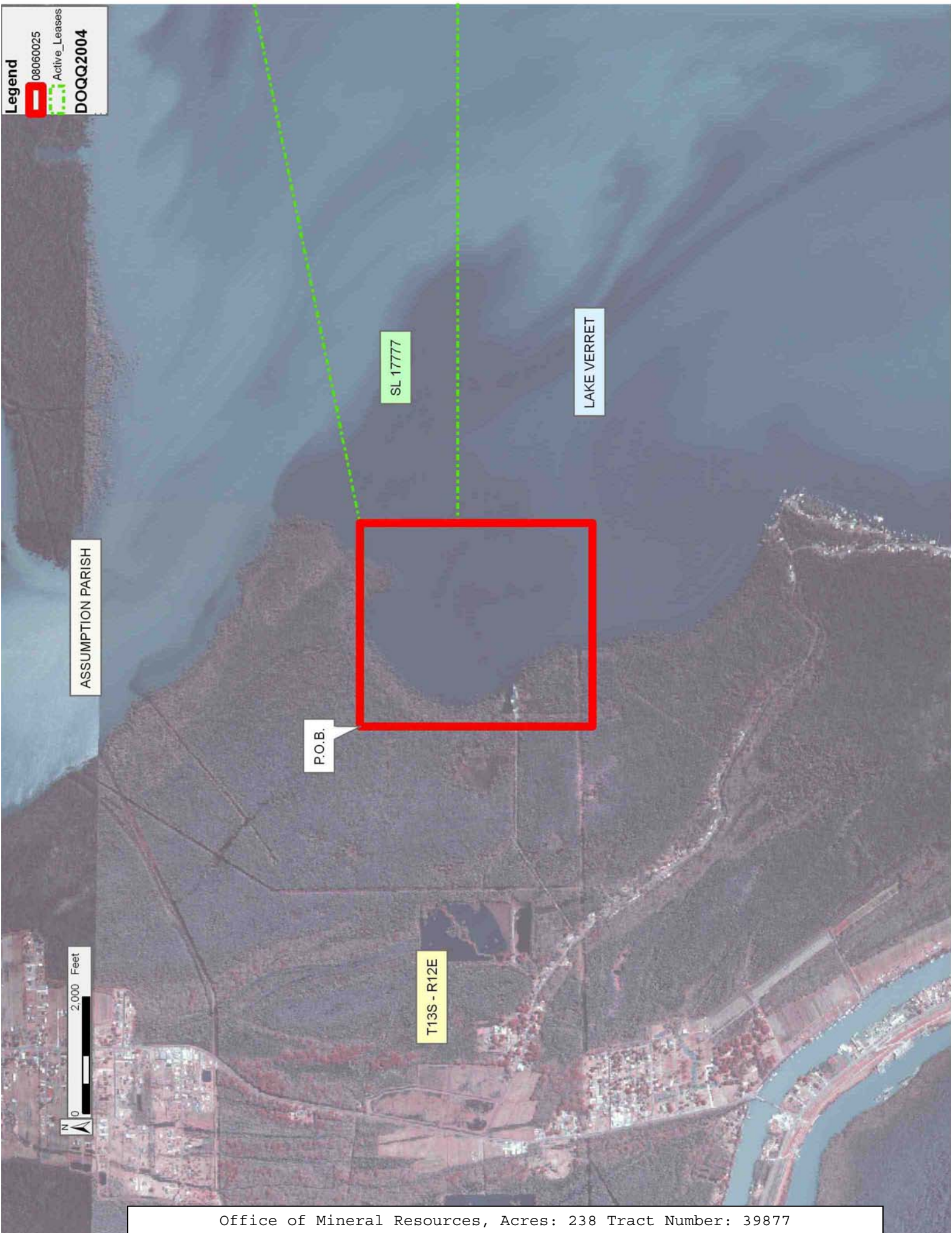
NOTE: The State of Louisiana does hereby reserve, and this lease shall be subject to, the imprescriptible right of surface use in the nature of a servitude in favor of the Department of Natural Resources, including its Offices and Commissions, for the sole purpose of implementing, constructing, servicing and maintaining approved coastal zone management and/or restoration projects. Utilization of any and all rights derived under this lease by the mineral lessee, its agents, successors or assigns, shall not interfere with nor hinder the reasonable surface use by the Department of Natural Resources, its Offices or Commissions, as herein above reserved.

Applicant: SUNCOAST LAND SERVICES, INC.

Bidder	Cash Payment	Price/Acre	Rental	Oil	Gas	Other



**Legend**  
08060025  
Active\_Leases  
DOQQ2004



**TRACT 39878 - St. Mary Parish, Louisiana**

All of the lands now or formerly constituting the beds and bottoms of all water bodies of every nature and description as to which title is vested in the State of Louisiana, together with all islands arising therein and other lands formed by accretion or by reliction, where allowed by law, excepting tax adjudicated lands, and not presently under mineral lease on June 11, 2008, situated in St. Mary Parish, Louisiana, and more particularly described as follows: Beginning at a point having Coordinates of X = 1,905,509.00 and Y = 391,191.00; thence East 7,924.00 feet to a point having Coordinates of X = 1,913,433.00 and Y = 391,191.00; thence South 12,000.00 feet to a point having Coordinates of X = 1,913,433.00 and Y = 379,191.00; thence West 7,924.00 feet to a point having Coordinates of X = 1,905,509.00 and Y = 379,191.00; thence North 12,000.00 feet to the point of beginning, containing approximately **1,173 acres**, all as more particularly outlined on a plat on file in the Office of Mineral Resources, Department of Natural Resources. All bearings, distances and coordinates are based on Louisiana Coordinate System of 1927, (North or South Zone), where applicable.

NOTE: The above description of the Tract nominated for lease has been provided and corrected, where required, exclusively by the nomination party. Any mineral lease selected from this Tract and awarded by the Louisiana State Mineral Board shall be without warranty of any kind, either express, implied, or statutory, including, but not limited to, the implied warranties of merchantability and fitness for a particular purpose. Should the mineral lease awarded by the Louisiana State Mineral Board be subsequently modified, cancelled or abrogated due to the existence of conflicting leases, operating agreements, private claims or other future obligations or conditions which may affect all or any portion of the leased Tract, it shall not relieve the Lessee of the obligation to pay any bonus due thereon to the Louisiana State Mineral Board, nor shall the Louisiana State Mineral Board be obligated to refund any consideration paid by the Lessor prior to such modification, cancellation, or abrogation, including, but not limited to, bonuses, rentals and royalties.

NOTE: The State of Louisiana does hereby reserve, and this lease shall be subject to, the imprescriptible right of surface use in the nature of a servitude in favor of the Department of Natural Resources, including its Offices and Commissions, for the sole purpose of implementing, constructing, servicing and maintaining approved coastal zone management and/or restoration projects. Utilization of any and all rights derived under this lease by the mineral lessee, its agents, successors or assigns, shall not interfere with nor hinder the reasonable surface use by the Department of Natural Resources, its Offices or Commissions, as herein above reserved.

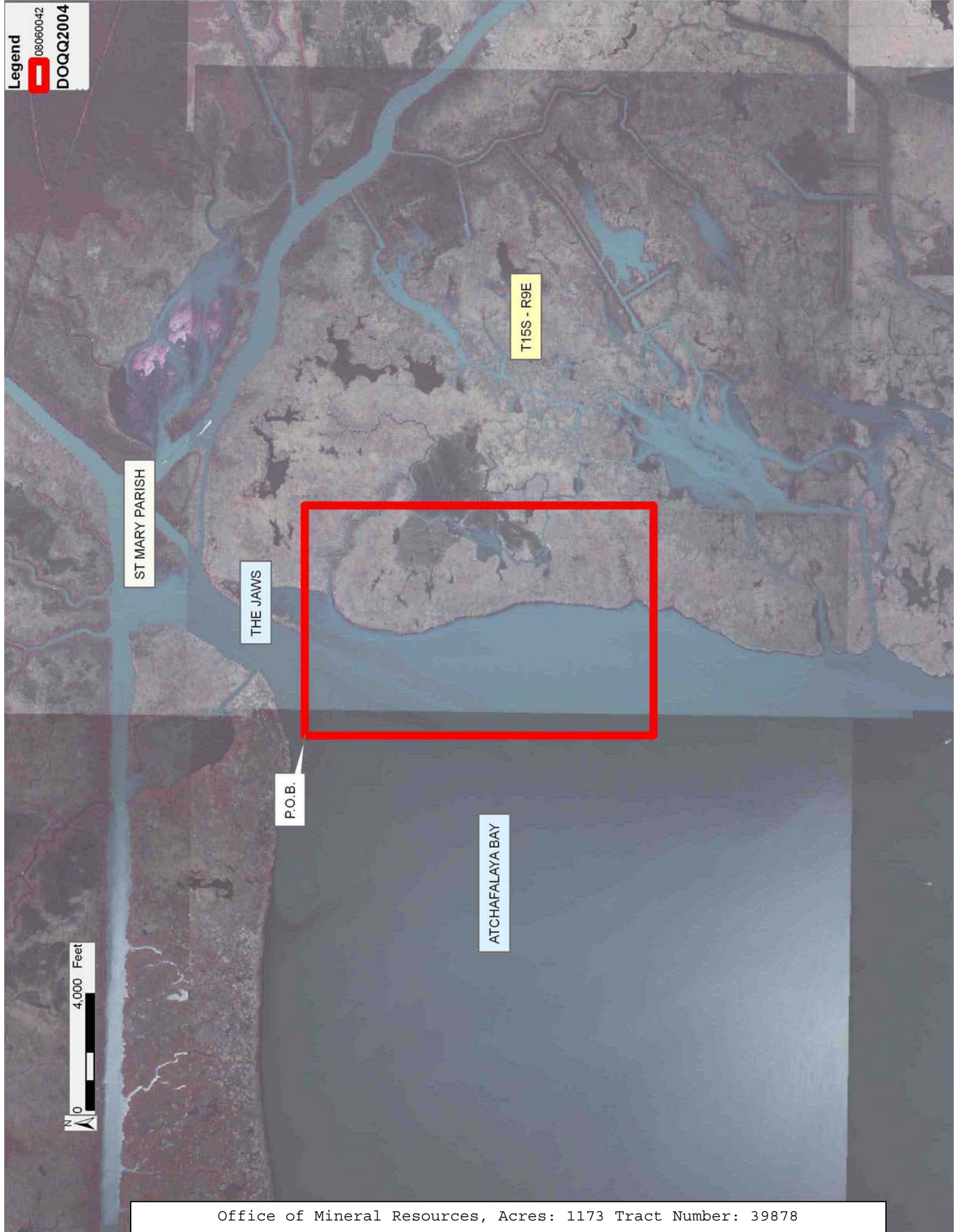
NOTE: The Department of Wildlife and Fisheries has designated certain areas in the coastal waters of the State of Louisiana as Oyster Seed Bed Areas. The exact location of those Seed Bed Areas must be obtained from

the Department of Wildlife and Fisheries and any work done under a mineral lease from the State of Louisiana may necessarily be conducted in conformity with the rules and regulations promulgated by the said Department of Wildlife and Fisheries for Oyster Seed Bed Areas.

Applicant: HAROLD J. ANDERSON, INC.

Bidder	Cash Payment	Price/Acre	Rental	Oil	Gas	Other





ST MARY PARISH

THE JAWS

P.O.B.

ATCHAFALAYA BAY

T15S - R9E

4,000 Feet



**TRACT 39879 - St. Mary Parish, Louisiana**

All of the lands now or formerly constituting the beds and bottoms of all water bodies of every nature and description as to which title is vested in the State of Louisiana, together with all islands arising therein and other lands formed by accretion or by reliction, where allowed by law, excepting tax adjudicated lands, and not presently under mineral lease on June 11, 2008, situated in St. Mary Parish, Louisiana, and more particularly described as follows: Beginning at a point having Coordinates of X = 1,897,585.00 and Y = 391,191.00; thence East 7,924.00 feet to a point having Coordinates of X = 1,905,509.00 and Y = 391,191.00; thence South 12,000.00 feet to a point having Coordinates of X = 1,905,509.00 and Y = 379,191.00; thence West 7,924.00 feet to a point having Coordinates of X = 1,897,585.00 and Y = 379,191.00; thence North 12,000.00 feet to the point of beginning, containing approximately **2,182.92 acres**, all as more particularly outlined on a plat on file in the Office of Mineral Resources, Department of Natural Resources. All bearings, distances and coordinates are based on Louisiana Coordinate System of 1927, (North or South Zone), where applicable.

NOTE: The above description of the Tract nominated for lease has been provided and corrected, where required, exclusively by the nomination party. Any mineral lease selected from this Tract and awarded by the Louisiana State Mineral Board shall be without warranty of any kind, either express, implied, or statutory, including, but not limited to, the implied warranties of merchantability and fitness for a particular purpose. Should the mineral lease awarded by the Louisiana State Mineral Board be subsequently modified, cancelled or abrogated due to the existence of conflicting leases, operating agreements, private claims or other future obligations or conditions which may affect all or any portion of the leased Tract, it shall not relieve the Lessee of the obligation to pay any bonus due thereon to the Louisiana State Mineral Board, nor shall the Louisiana State Mineral Board be obligated to refund any consideration paid by the Lessor prior to such modification, cancellation, or abrogation, including, but not limited to, bonuses, rentals and royalties.

NOTE: The State of Louisiana does hereby reserve, and this lease shall be subject to, the imprescriptible right of surface use in the nature of a servitude in favor of the Department of Natural Resources, including its Offices and Commissions, for the sole purpose of implementing, constructing, servicing and maintaining approved coastal zone management and/or restoration projects. Utilization of any and all rights derived under this lease by the mineral lessee, its agents, successors or assigns, shall not interfere with nor hinder the reasonable surface use by the Department of Natural Resources, its Offices or Commissions, as herein above reserved.

NOTE: The Department of Wildlife and Fisheries has designated certain areas in the coastal waters of the State of Louisiana as Oyster Seed Bed Areas. The exact location of those Seed Bed Areas must be obtained from

the Department of Wildlife and Fisheries and any work done under a mineral lease from the State of Louisiana may necessarily be conducted in conformity with the rules and regulations promulgated by the said Department of Wildlife and Fisheries for Oyster Seed Bed Areas.

Applicant: HAROLD J. ANDERSON, INC.

Bidder	Cash Payment	Price/Acre	Rental	Oil	Gas	Other



Legend  
08060041  
DOQQ2004

T15S - R8E

ST MARY PARISH

P.O.B.

ATCHAFALAYA BAY



**TRACT 39880 - St. Mary Parish, Louisiana**

All of the lands now or formerly constituting the beds and bottoms of all water bodies of every nature and description as to which title is vested in the State of Louisiana, together with all islands arising therein and other lands formed by accretion or by reliction, where allowed by law, excepting tax adjudicated lands, and not presently under mineral lease on June 11, 2008, situated in St. Mary Parish, Louisiana, and more particularly described as follows: Beginning at the Southernmost Southwest corner of State Lease No. 17647, as amended, having Coordinates of X = 1,982,630.69 and Y = 379,294.11; thence North 78 degrees 48 minutes 21 seconds East 5,573.50 feet along the Southern boundary of said State Lease No. 17647 to a point having Coordinates of X = 1,988,098.16 and Y = 380,376.12; thence South 11 degrees 11 minutes 39 seconds East 4,025.88 feet to a point having Coordinates of X = 1,988,879.72 and Y = 376,426.84; thence South 78 degrees 48 minutes 21 seconds West 5,573.50 feet to a point having Coordinates of X = 1,983,412.26 and Y = 375,344.83; thence North 11 degrees 11 minutes 39 seconds West 4,025.88 feet to the point of beginning, containing approximately **26 acres**, all as more particularly outlined on a plat on file in the Office of Mineral Resources, Department of Natural Resources. All bearings, distances and coordinates are based on Louisiana Coordinate System of 1927, (North or South Zone), where applicable.

NOTE: The above description of the Tract nominated for lease has been provided and corrected, where required, exclusively by the nomination party. Any mineral lease selected from this Tract and awarded by the Louisiana State Mineral Board shall be without warranty of any kind, either express, implied, or statutory, including, but not limited to, the implied warranties of merchantability and fitness for a particular purpose. Should the mineral lease awarded by the Louisiana State Mineral Board be subsequently modified, cancelled or abrogated due to the existence of conflicting leases, operating agreements, private claims or other future obligations or conditions which may affect all or any portion of the leased Tract, it shall not relieve the Lessee of the obligation to pay any bonus due thereon to the Louisiana State Mineral Board, nor shall the Louisiana State Mineral Board be obligated to refund any consideration paid by the Lessor prior to such modification, cancellation, or abrogation, including, but not limited to, bonuses, rentals and royalties.

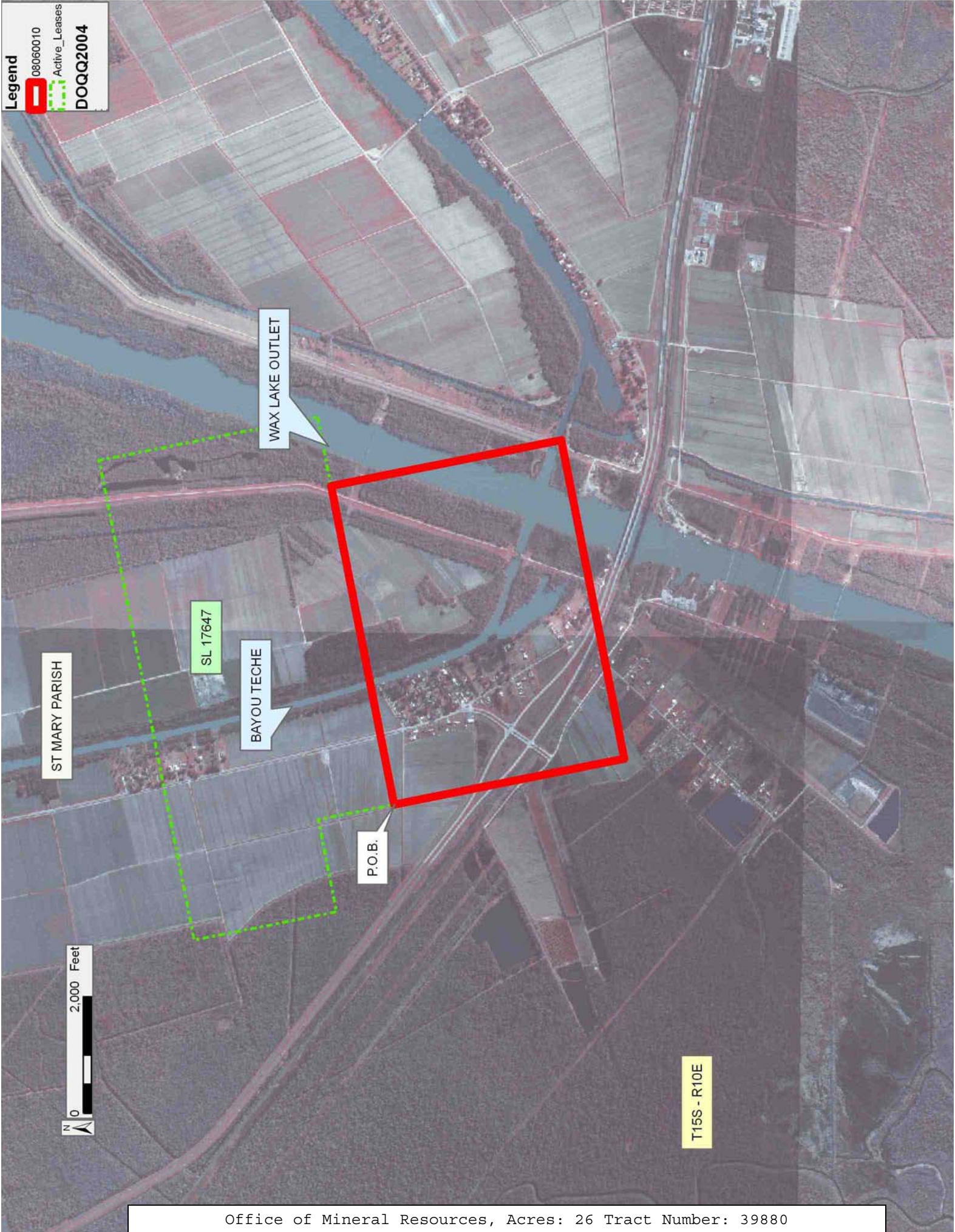
NOTE: The State of Louisiana does hereby reserve, and this lease shall be subject to, the imprescriptible right of surface use in the nature of a servitude in favor of the Department of Natural Resources, including its Offices and Commissions, for the sole purpose of implementing, constructing, servicing and maintaining approved coastal zone management and/or restoration projects. Utilization of any and all rights derived under this lease by the mineral lessee, its agents, successors or assigns, shall not interfere with nor hinder the reasonable surface use by the Department of Natural Resources, its Offices or Commissions, as herein above reserved.

Applicant: GULF LAND & SEISMIC, INC.

Bidder	Cash Payment	Price/Acre	Rental	Oil	Gas	Other



**Legend**  
08060010  
Active\_Leases  
DOQQ2004



**TRACT 39881 - St. Mary Parish, Louisiana**

All of the lands now or formerly constituting the beds and bottoms of all water bodies of every nature and description as to which title is vested in the State of Louisiana, together with all islands arising therein and other lands formed by accretion or by reliction, where allowed by law, excepting tax adjudicated lands, and not presently under mineral lease on June 11, 2008, situated in St. Mary Parish, Louisiana, and more particularly described as follows: Beginning at a point having Coordinates of X = 1,897,585.00 and Y = 379,191.00; thence East 7,924.00 feet to a point having Coordinates of X = 1,905,509.00 and Y = 379,191.00; thence South 4,858.37 feet to a point on the North boundary of State Lease No. 5176, as amended, having Coordinates of X = 1,905,509.00 and Y = 374,332.63; thence along the boundary of said State Lease No. 5176 the following courses: West 2,005.00 feet and South 3,231.84 feet to its Southwest corner also being a point on the North boundary of State Lease No. 8091, as amended, having Coordinates of X = 1,903,504.00 and Y = 371,100.79; thence along the boundary of said State Lease No. 8091 the following courses: West 1,736.02 feet and South 08 degrees 31 minutes 46 seconds East 2,528.76 feet to its Southwest corner also being the Northwest corner of State Lease No. 9410, as amended, having Coordinates of X = 1,902,143.04 and Y = 368,600.00; thence South 08 degrees 31 minutes 46 seconds East 1,493.01 feet along the West boundary of said State Lease No. 9410 to a point having Coordinates of X = 1,902,364.48 and Y = 367,123.50; thence West 3,473.48 feet to a point having Coordinates of X = 1,898,891.00 and Y = 367,123.50; thence North 4,030.50 feet to a point having Coordinates of X = 1,898,891.00 and Y = 371,154.00; thence West 1,306.00 feet to a point having Coordinates of X = 1,897,585.00 and Y = 371,154.00; thence North 8,037.00 feet to the point of beginning, containing approximately **1,611.26 acres**, all as more particularly outlined on a plat on file in the Office of Mineral Resources, Department of Natural Resources. All bearings, distances and coordinates are based on Louisiana Coordinate System of 1927, (North or South Zone), where applicable.

NOTE: The above description of the Tract nominated for lease has been provided and corrected, where required, exclusively by the nomination party. Any mineral lease selected from this Tract and awarded by the Louisiana State Mineral Board shall be without warranty of any kind, either express, implied, or statutory, including, but not limited to, the implied warranties of merchantability and fitness for a particular purpose. Should the mineral lease awarded by the Louisiana State Mineral Board be subsequently modified, cancelled or abrogated due to the existence of conflicting leases, operating agreements, private claims or other future obligations or conditions which may affect all or any portion of the leased Tract, it shall not relieve the Lessee of the obligation to pay any bonus due thereon to the Louisiana State Mineral Board, nor shall the Louisiana State Mineral Board be obligated to refund any consideration paid by the Lessor prior to such modification, cancellation, or abrogation, including, but not limited to, bonuses, rentals and royalties.

NOTE: The State of Louisiana does hereby reserve, and this lease shall be subject to, the imprescriptible right of surface use in the nature of a servitude in favor of the Department of Natural Resources, including its Offices and Commissions, for the sole purpose of implementing, constructing, servicing and maintaining approved coastal zone management and/or restoration projects. Utilization of any and all rights derived under this lease by the mineral lessee, its agents, successors or assigns, shall not interfere with nor hinder the reasonable surface use by the Department of Natural Resources, its Offices or Commissions, as herein above reserved.

NOTE: The Department of Wildlife and Fisheries has designated certain areas in the coastal waters of the State of Louisiana as Oyster Seed Bed Areas. The exact location of those Seed Bed Areas must be obtained from the Department of Wildlife and Fisheries and any work done under a mineral lease from the State of Louisiana may necessarily be conducted in conformity with the rules and regulations promulgated by the said Department of Wildlife and Fisheries for Oyster Seed Bed Areas.

Applicant: HAROLD J. ANDERSON, INC.

Bidder	Cash Payment	Price/Acre	Rental	Oil	Gas	Other



**Legend**  
08060043  
Active\_Leases  
DOQQ2004

T15S - R8E

ST MARY PARISH

P.O.B.

ATCHAFALAYA BAY

SL 5176

SL 8091

SL 9410

