

TRACT 39862 - Caddo Parish, Louisiana

All of the lands now or formerly constituting the beds and bottoms of all water bodies of every nature and description as to which title is vested in the State of Louisiana, together with all islands arising therein and other lands formed by accretion or by reliction, where allowed by law, excepting tax adjudicated lands, and not presently under mineral lease on June 11, 2008, situated in Caddo Parish, Louisiana, and more particularly described as follows: Beginning at a point having Coordinates of X = 1,558,580.26 and Y = 685,943.06; thence South 88 degrees 28 minutes 31 seconds East 5,317.84 feet to a point having Coordinates of X = 1,563,896.22 and Y = 685,801.55; thence South 01 degrees 12 minutes 16 seconds West 5,357.95 feet to a point having Coordinates of X = 1,563,783.60 and Y = 680,444.78; thence North 88 degrees 13 minutes 44 seconds West 5,306.90 feet to a point having Coordinates of X = 1,558,479.23 and Y = 680,608.80; thence North 01 degrees 05 minutes 06 seconds East 5,335.22 feet to the point of beginning, **LESS AND EXCEPT** that portion, if any, of State Lease No. 2524 which may lie within the above described tract, containing approximately **207 acres**, all as more particularly outlined on a plat on file in the Office of Mineral Resources, Department of Natural Resources. All bearings, distances and coordinates are based on Louisiana Coordinate System of 1927, (North or South Zone), where applicable.

NOTE: The above description of the Tract nominated for lease has been provided and corrected, where required, exclusively by the nomination party. Any mineral lease selected from this Tract and awarded by the Louisiana State Mineral Board shall be without warranty of any kind, either express, implied, or statutory, including, but not limited to, the implied warranties of merchantability and fitness for a particular purpose. Should the mineral lease awarded by the Louisiana State Mineral Board be subsequently modified, cancelled or abrogated due to the existence of conflicting leases, operating agreements, private claims or other future obligations or conditions which may affect all or any portion of the leased Tract, it shall not relieve the Lessee of the obligation to pay any bonus due thereon to the Louisiana State Mineral Board, nor shall the Louisiana State Mineral Board be obligated to refund any consideration paid by the Lessor prior to such modification, cancellation, or abrogation, including, but not limited to, bonuses, rentals and royalties.

NOTE: There shall be no drilling operations on the leased premises.

Applicant: MARTIN PRODUCING, L.L.C.

Bidder	Cash Payment	Price/Acre	Rental	Oil	Gas	Other

Legend
08060002
DOQQ2004

CADDO PARISH

T18N - R15W

P.O.B.

CROSS LAKE

N
0 2,000 Feet

TRACT 39863 - Caddo Parish, Louisiana

All of the lands now or formerly constituting the beds and bottoms of all water bodies of every nature and description as to which title is vested in the State of Louisiana, together with all islands arising therein and other lands formed by accretion or by reliction, where allowed by law, excepting tax adjudicated lands, and not presently under mineral lease on June 11, 2008, situated in Caddo Parish, Louisiana, and more particularly described as follows: Beginning at a point having Coordinates of X = 1,563,896.22 and Y = 685,801.55; thence South 88 degrees 28 minutes 31 seconds East 5,419.25 feet to a point having Coordinates of X = 1,569,313.55 and Y = 685,657.34; thence South 01 degrees 58 minutes 20 seconds West 5,353.83 feet to a point having Coordinates of X = 1,569,129.29 and Y = 680,306.68; thence North 88 degrees 31 minutes 13 seconds West 5,347.48 feet to a point having Coordinates of X = 1,563,783.60 and Y = 680,444.78; thence North 01 degrees 12 minutes 16 seconds East 5,357.95 feet to the point of beginning, containing approximately **157 acres**, all as more particularly outlined on a plat on file in the Office of Mineral Resources, Department of Natural Resources. All bearings, distances and coordinates are based on Louisiana Coordinate System of 1927, (North or South Zone), where applicable.

NOTE: The above description of the Tract nominated for lease has been provided and corrected, where required, exclusively by the nomination party. Any mineral lease selected from this Tract and awarded by the Louisiana State Mineral Board shall be without warranty of any kind, either express, implied, or statutory, including, but not limited to, the implied warranties of merchantability and fitness for a particular purpose. Should the mineral lease awarded by the Louisiana State Mineral Board be subsequently modified, cancelled or abrogated due to the existence of conflicting leases, operating agreements, private claims or other future obligations or conditions which may affect all or any portion of the leased Tract, it shall not relieve the Lessee of the obligation to pay any bonus due thereon to the Louisiana State Mineral Board, nor shall the Louisiana State Mineral Board be obligated to refund any consideration paid by the Lessor prior to such modification, cancellation, or abrogation, including, but not limited to, bonuses, rentals and royalties.

NOTE: There shall be no drilling operations on the leased premises.

Applicant: MARTIN PRODUCING, L.L.C.

Bidder	Cash Payment	Price/Acre	Rental	Oil	Gas	Other



CADDO PARISH

T18N - R15W

P.O.B.

CROSS LAKE



TRACT 39864 - Caddo Parish, Louisiana

All of the lands now or formerly constituting the beds and bottoms of all water bodies of every nature and description as to which title is vested in the State of Louisiana, together with all islands arising therein and other lands formed by accretion or by reliction, where allowed by law, excepting tax adjudicated lands, and not presently under mineral lease on June 11, 2008, situated in Caddo Parish, Louisiana, and more particularly described as follows: Beginning at a point having Coordinates of X = 1,563,783.60 and Y = 680,444.78; thence South 02 degrees 23 minutes 13 seconds West 5,301.79 feet to a point having Coordinates of X = 1,563,562.79 and Y = 675,147.59; thence Westerly approximately 5,285 feet to the Northeast corner of State Lease No. 5651, also being the Southeast corner of State Lease No. 2524; thence Northerly approximately 5,260 feet along the Eastern boundary of said State Lease No. 2524 to its Northeast corner; thence Northerly approximately 35 feet to a point having Coordinates of X = 1,558,479.23 and Y = 680,608.80; thence South 88 degrees 13 minutes 44 seconds East 5,306.90 feet to the point of beginning, containing approximately **579 acres**, all as more particularly outlined on a plat on file in the Office of Mineral Resources, Department of Natural Resources. All bearings, distances and coordinates are based on Louisiana Coordinate System of 1927, (North or South Zone), where applicable.

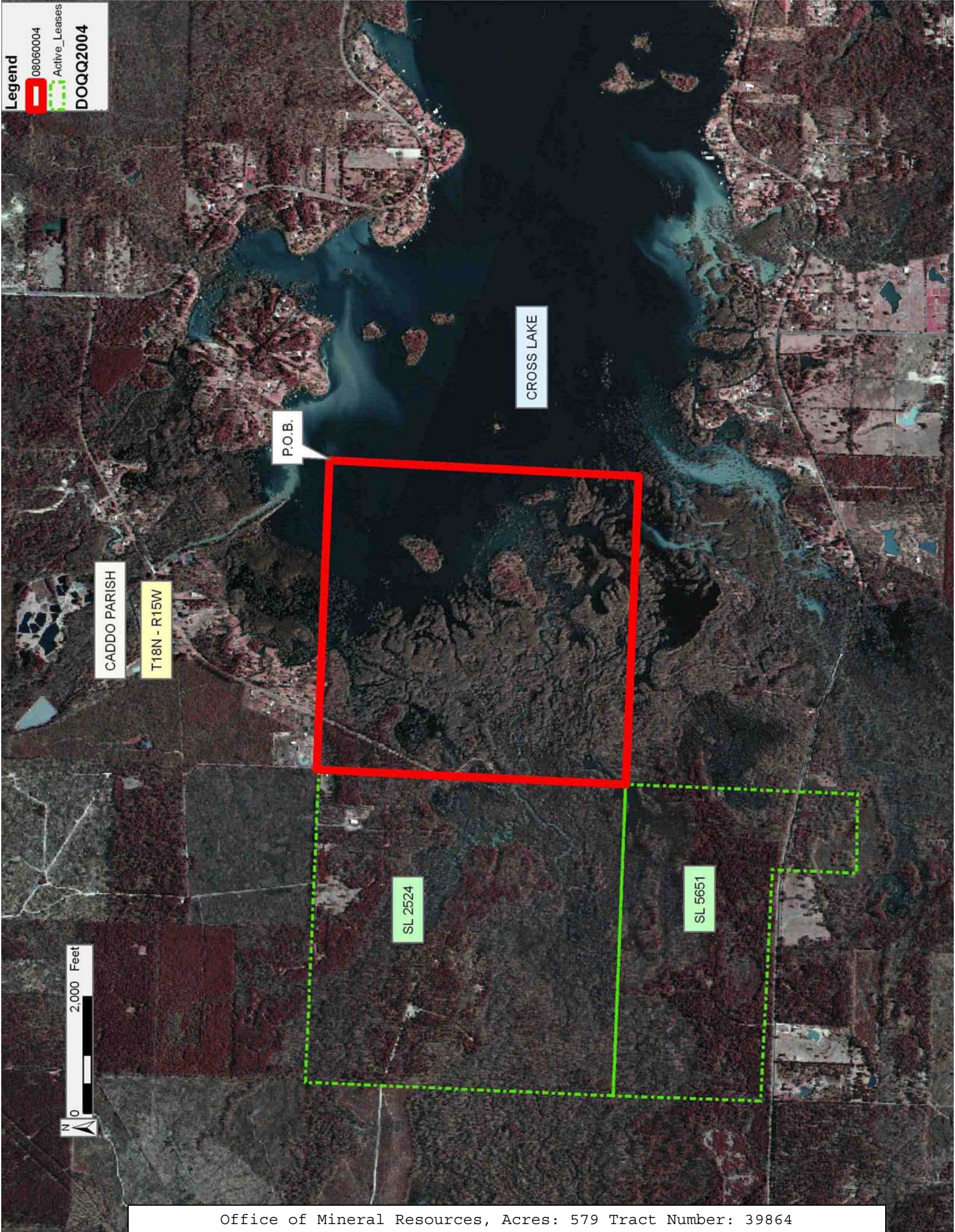
NOTE: The above description of the Tract nominated for lease has been provided and corrected, where required, exclusively by the nomination party. Any mineral lease selected from this Tract and awarded by the Louisiana State Mineral Board shall be without warranty of any kind, either express, implied, or statutory, including, but not limited to, the implied warranties of merchantability and fitness for a particular purpose. Should the mineral lease awarded by the Louisiana State Mineral Board be subsequently modified, cancelled or abrogated due to the existence of conflicting leases, operating agreements, private claims or other future obligations or conditions which may affect all or any portion of the leased Tract, it shall not relieve the Lessee of the obligation to pay any bonus due thereon to the Louisiana State Mineral Board, nor shall the Louisiana State Mineral Board be obligated to refund any consideration paid by the Lessor prior to such modification, cancellation, or abrogation, including, but not limited to, bonuses, rentals and royalties.

NOTE: There shall be no drilling operations on the leased premises.

Applicant: MARTIN PRODUCING, L.L.C.

Bidder	Cash Payment	Price/Acre	Rental	Oil	Gas	Other

Legend
08060004
Active_Leases
DOQQ2004



TRACT 39865 - Caddo Parish, Louisiana

All of the lands now or formerly constituting the beds and bottoms of all water bodies of every nature and description as to which title is vested in the State of Louisiana, together with all islands arising therein and other lands formed by accretion or by reliction, where allowed by law, excepting tax adjudicated lands, and not presently under mineral lease on June 11, 2008, situated in Caddo Parish, Louisiana, and more particularly described as follows: Beginning at a point having Coordinates of X = 1,563,783.60 and Y = 680,444.78; thence South 88 degrees 31 minutes 13 seconds East 5,347.47 feet to a point having Coordinates of X = 1,569,129.29 and Y = 680,306.68; thence South 03 degrees 48 minutes 35 seconds West 5,332.89 feet to a point having Coordinates of X = 1,568,774.96 and Y = 674,985.57; thence North 88 degrees 13 minutes 10 seconds West 5,214.69 feet to a point having Coordinates of X = 1,563,562.79 and Y = 675,147.59; thence North 02 degrees 23 minutes 13 seconds East 5,301.79 feet to the point of beginning, containing approximately **599 acres**, all as more particularly outlined on a plat on file in the Office of Mineral Resources, Department of Natural Resources. All bearings, distances and coordinates are based on Louisiana Coordinate System of 1927, (North or South Zone), where applicable.

NOTE: The above description of the Tract nominated for lease has been provided and corrected, where required, exclusively by the nomination party. Any mineral lease selected from this Tract and awarded by the Louisiana State Mineral Board shall be without warranty of any kind, either express, implied, or statutory, including, but not limited to, the implied warranties of merchantability and fitness for a particular purpose. Should the mineral lease awarded by the Louisiana State Mineral Board be subsequently modified, cancelled or abrogated due to the existence of conflicting leases, operating agreements, private claims or other future obligations or conditions which may affect all or any portion of the leased Tract, it shall not relieve the Lessee of the obligation to pay any bonus due thereon to the Louisiana State Mineral Board, nor shall the Louisiana State Mineral Board be obligated to refund any consideration paid by the Lessor prior to such modification, cancellation, or abrogation, including, but not limited to, bonuses, rentals and royalties.

NOTE: There shall be no drilling operations on the leased premises.

Applicant: MARTIN PRODUCING, L.L.C.

Bidder	Cash Payment	Price/Acre	Rental	Oil	Gas	Other

CADDO PARISH

T18N - R15W

CROSS LAKE

P.O.B.



TRACT 39866 - Caddo Parish, Louisiana

All of the lands now or formerly constituting the beds and bottoms of all water bodies of every nature and description as to which title is vested in the State of Louisiana, together with all islands arising therein and other lands formed by accretion or by reliction, where allowed by law, excepting tax adjudicated lands, and not presently under mineral lease on June 11, 2008, situated in Caddo Parish, Louisiana, and more particularly described as follows: Beginning at a point having Coordinates of X = 1,563,562.79 and Y = 675,147.59; thence South 02 degrees 29 minutes 53 seconds West 5,301.00 feet to a point having Coordinates of X = 1,563,331.74 and Y = 669,851.63; thence Westerly approximately 5,230 feet to the Northeast corner of State Lease No. 9076; thence Northerly approximately 1,368 feet to the Southeast corner of State Lease No. 5651; thence Northerly approximately 3,977 feet along the Eastern boundary of State Lease No. 5651 to its Northeast corner, also being the Southeast corner of State Lease No. 2524; thence Easterly approximately 5,285 feet to the point of beginning, containing approximately **386 acres**, all as more particularly outlined on a plat on file in the Office of Mineral Resources, Department of Natural Resources. All bearings, distances and coordinates are based on Louisiana Coordinate System of 1927, (North or South Zone), where applicable.

NOTE: The above description of the Tract nominated for lease has been provided and corrected, where required, exclusively by the nomination party. Any mineral lease selected from this Tract and awarded by the Louisiana State Mineral Board shall be without warranty of any kind, either express, implied, or statutory, including, but not limited to, the implied warranties of merchantability and fitness for a particular purpose. Should the mineral lease awarded by the Louisiana State Mineral Board be subsequently modified, cancelled or abrogated due to the existence of conflicting leases, operating agreements, private claims or other future obligations or conditions which may affect all or any portion of the leased Tract, it shall not relieve the Lessee of the obligation to pay any bonus due thereon to the Louisiana State Mineral Board, nor shall the Louisiana State Mineral Board be obligated to refund any consideration paid by the Lessor prior to such modification, cancellation, or abrogation, including, but not limited to, bonuses, rentals and royalties.

NOTE: There shall be no drilling operations on the leased premises.

Applicant: MARTIN PRODUCING, L.L.C.

Bidder	Cash Payment	Price/Acre	Rental	Oil	Gas	Other

Legend
08060006
Active_Leases
DOQQ2004



CADDO PARISH

CROSS LAKE

P.O.B.

T18N - R15W

SL 2524

SL 5651

SL 9076

T17N - R15W



TRACT 39867 - Caddo Parish, Louisiana

All of the lands now or formerly constituting the beds and bottoms of all water bodies of every nature and description as to which title is vested in the State of Louisiana, together with all islands arising therein and other lands formed by accretion or by reliction, where allowed by law, excepting tax adjudicated lands, and not presently under mineral lease on June 11, 2008, situated in Caddo Parish, Louisiana, and more particularly described as follows: Beginning at a point having Coordinates of X = 1,563,562.79 and Y = 675,147.59; thence South 88 degrees 13 minutes 10 seconds East 5,214.69 feet to a point having Coordinates of X = 1,568,774.96 and Y = 674,985.57; thence South 02 degrees 28 minutes 38 seconds West 5,146.22 feet to a point having Coordinates of X = 1,568,552.53 and Y = 669,844.16; thence North 89 degrees 55 minutes 05 seconds West 5,220.80 feet to a point having Coordinates of X = 1,563,331.74 and Y = 669,851.63; thence North 02 degrees 29 minutes 54 seconds East 5,301.00 feet to the point of beginning, containing approximately **239 acres**, all as more particularly outlined on a plat on file in the Office of Mineral Resources, Department of Natural Resources. All bearings, distances and coordinates are based on Louisiana Coordinate System of 1927, (North or South Zone), where applicable.

NOTE: The above description of the Tract nominated for lease has been provided and corrected, where required, exclusively by the nomination party. Any mineral lease selected from this Tract and awarded by the Louisiana State Mineral Board shall be without warranty of any kind, either express, implied, or statutory, including, but not limited to, the implied warranties of merchantability and fitness for a particular purpose. Should the mineral lease awarded by the Louisiana State Mineral Board be subsequently modified, cancelled or abrogated due to the existence of conflicting leases, operating agreements, private claims or other future obligations or conditions which may affect all or any portion of the leased Tract, it shall not relieve the Lessee of the obligation to pay any bonus due thereon to the Louisiana State Mineral Board, nor shall the Louisiana State Mineral Board be obligated to refund any consideration paid by the Lessor prior to such modification, cancellation, or abrogation, including, but not limited to, bonuses, rentals and royalties.

NOTE: There shall be no drilling on the leased premises.

Applicant: PROLAND, LLC

Bidder	Cash Payment	Price/Acre	Rental	Oil	Gas	Other

CADDO PARISH

CROSS LAKE

T18N - R15W

T17N - R15W

P.O.B.

0 2,000 Feet



TRACT 39868 - Bienville and Red River Parishes, Louisiana

All of the lands now or formerly constituting the beds and bottoms of all water bodies of every nature and description as to which title is vested in the State of Louisiana, together with all islands arising therein and other lands formed by accretion or by reliction, where allowed by law, excepting tax adjudicated lands, and not presently under mineral lease on June 11, 2008, situated in Bienville and Red River Parishes, Louisiana, and more particularly described as follows: Beginning at a point having Coordinates of X = 1,745,547.29 and Y = 571,780.03; thence East 5,279.56 feet to a point having Coordinates of X = 1,750,826.85 and Y = 571,780.03; thence South 5,390.42 feet to a point having Coordinates of X = 1,750,826.85 and Y = 566,389.62; thence West 5,279.56 feet to a point having Coordinates of X = 1,745,547.29 and Y = 566,389.62; thence North 5,390.42 feet to the point of beginning, containing approximately **12 acres**, all as more particularly outlined on a plat on file in the Office of Mineral Resources, Department of Natural Resources. All bearings, distances and coordinates are based on Louisiana Coordinate System of 1927, (North or South Zone), where applicable.

NOTE: The above description of the Tract nominated for lease has been provided and corrected, where required, exclusively by the nomination party. Any mineral lease selected from this Tract and awarded by the Louisiana State Mineral Board shall be without warranty of any kind, either express, implied, or statutory, including, but not limited to, the implied warranties of merchantability and fitness for a particular purpose. Should the mineral lease awarded by the Louisiana State Mineral Board be subsequently modified, cancelled or abrogated due to the existence of conflicting leases, operating agreements, private claims or other future obligations or conditions which may affect all or any portion of the leased Tract, it shall not relieve the Lessee of the obligation to pay any bonus due thereon to the Louisiana State Mineral Board, nor shall the Louisiana State Mineral Board be obligated to refund any consideration paid by the Lessor prior to such modification, cancellation, or abrogation, including, but not limited to, bonuses, rentals and royalties.

Applicant: HUNTER ENERGY CORPORATION

Bidder	Cash Payment	Price/Acre	Rental	Oil	Gas	Other

Legend
08060080
DOQQ2004

BIENVILLE PARISH

T15N - R9W

GRAND BAYOU

P.O.B.

RED RIVER PARISH

T14N - R9W



TRACT 39869 - Red River Parish, Louisiana

All of the lands now or formerly constituting the beds and bottoms of all water bodies of every nature and description as to which title is vested in the State of Louisiana, together with all islands arising therein and other lands formed by accretion or by reliction, where allowed by law, excepting tax adjudicated lands, and not presently under mineral lease on June 11, 2008, situated in Red River Parish, Louisiana, and more particularly described as follows: Beginning at a point having Coordinates of X = 1,750,826.85 and Y = 570,404.43; thence East 8,000.00 feet to a point having Coordinates of X = 1,758,826.85 and Y = 570,404.43; thence South 11,995.99 feet to a point having Coordinates of X = 1,758,826.85 and Y = 558,408.44; thence West 8,000.00 feet to a point having Coordinates of X = 1,750,826.85 and Y = 558,408.44; thence North 11,995.99 feet to the point of beginning, containing approximately **35 acres**, all as more particularly outlined on a plat on file in the Office of Mineral Resources, Department of Natural Resources. All bearings, distances and coordinates are based on Louisiana Coordinate System of 1927, (North or South Zone), where applicable.

NOTE: The above description of the Tract nominated for lease has been provided and corrected, where required, exclusively by the nomination party. Any mineral lease selected from this Tract and awarded by the Louisiana State Mineral Board shall be without warranty of any kind, either express, implied, or statutory, including, but not limited to, the implied warranties of merchantability and fitness for a particular purpose. Should the mineral lease awarded by the Louisiana State Mineral Board be subsequently modified, cancelled or abrogated due to the existence of conflicting leases, operating agreements, private claims or other future obligations or conditions which may affect all or any portion of the leased Tract, it shall not relieve the Lessee of the obligation to pay any bonus due thereon to the Louisiana State Mineral Board, nor shall the Louisiana State Mineral Board be obligated to refund any consideration paid by the Lessor prior to such modification, cancellation, or abrogation, including, but not limited to, bonuses, rentals and royalties.

Applicant: HUNTER ENERGY CORPORATION

Bidder	Cash Payment	Price/Acre	Rental	Oil	Gas	Other

Legend
08060079
DOQQ2004

BIENVILLE PARISH

T15N - R9W



P.O.B.

GRAND BAYOU

RED RIVER PARISH

T14N - R9W

0 4,000 Feet



TRACT 39870 - Red River Parish, Louisiana

All of the lands now or formerly constituting the beds and bottoms of all water bodies of every nature and description as to which title is vested in the State of Louisiana, together with all islands arising therein and other lands formed by accretion or by reliction, where allowed by law, excepting tax adjudicated lands, and not presently under mineral lease on June 11, 2008, situated in Red River Parish, Louisiana, and more particularly described as follows: Beginning at a point having Coordinates of X = 1,748,635.79 and Y = 558,408.44; thence East 13,000.00 feet to a point having Coordinates of X = 1,761,635.79 and Y = 558,408.44; thence South 18,480.00 feet to a point having Coordinates of X = 1,761,635.79 and Y = 539,928.44; thence West 13,000.00 feet to a point having Coordinates of X = 1,748,635.79 and Y = 539,928.44; thence North 18,480.00 feet to the point of beginning, containing approximately **44 acres**, all as more particularly outlined on a plat on file in the Office of Mineral Resources, Department of Natural Resources. All bearings, distances and coordinates are based on Louisiana Coordinate System of 1927, (North or South Zone), where applicable.

NOTE: The above description of the Tract nominated for lease has been provided and corrected, where required, exclusively by the nomination party. Any mineral lease selected from this Tract and awarded by the Louisiana State Mineral Board shall be without warranty of any kind, either express, implied, or statutory, including, but not limited to, the implied warranties of merchantability and fitness for a particular purpose. Should the mineral lease awarded by the Louisiana State Mineral Board be subsequently modified, cancelled or abrogated due to the existence of conflicting leases, operating agreements, private claims or other future obligations or conditions which may affect all or any portion of the leased Tract, it shall not relieve the Lessee of the obligation to pay any bonus due thereon to the Louisiana State Mineral Board, nor shall the Louisiana State Mineral Board be obligated to refund any consideration paid by the Lessor prior to such modification, cancellation, or abrogation, including, but not limited to, bonuses, rentals and royalties.

Applicant: HUNTER ENERGY CORPORATION

Bidder	Cash Payment	Price/Acre	Rental	Oil	Gas	Other

RED RIVER PARISH

T14N - R9W

P.O.B.

GRAND BAYOU

T13N - R9W

0 4,000 Feet

TRACT 39871 - Red River Parish, Louisiana

All of the lands now or formerly constituting the beds and bottoms of all water bodies of every nature and description as to which title is vested in the State of Louisiana, together with all islands arising therein and other lands formed by accretion or by reliction, where allowed by law, excepting tax adjudicated lands, and not presently under mineral lease on June 11, 2008, situated in Red River Parish, Louisiana, and more particularly described as follows: Beginning at the Westernmost Southwest corner of State Lease No. 18606, also being a point on the North boundary of State Lease No. 18503 having Coordinates of X = 1,708,555.00 and Y = 519,975.14; thence West 2,830.31 feet along the North boundary of said State Lease No. 18503 to its Northwest corner having Coordinates of X = 1,705,724.69 and Y = 519,975.14; thence West 3,469.69 feet to a point having Coordinates of X = 1,702,255.00 and Y = 519,975.14; thence North 10,700.00 feet to a point having Coordinates of X = 1,702,255.00 and Y = 530,675.14; thence East 6,300.00 feet to a point having Coordinates of X = 1,708,555.00 and Y = 530,675.14; thence South 1,030.14 feet to the Northwest corner of said State Lease No. 18606 having Coordinates of X = 1,708,555.00 and Y = 529,645.00; thence South 9,669.86 feet along the West boundary of said State Lease No. 18606 to the point of beginning, containing approximately **258 acres**, all as more particularly outlined on a plat on file in the Office of Mineral Resources, Department of Natural Resources. All bearings, distances and coordinates are based on Louisiana Coordinate System of 1927, (North or South Zone), where applicable.

NOTE: The above description of the Tract nominated for lease has been provided and corrected, where required, exclusively by the nomination party. Any mineral lease selected from this Tract and awarded by the Louisiana State Mineral Board shall be without warranty of any kind, either express, implied, or statutory, including, but not limited to, the implied warranties of merchantability and fitness for a particular purpose. Should the mineral lease awarded by the Louisiana State Mineral Board be subsequently modified, cancelled or abrogated due to the existence of conflicting leases, operating agreements, private claims or other future obligations or conditions which may affect all or any portion of the leased Tract, it shall not relieve the Lessee of the obligation to pay any bonus due thereon to the Louisiana State Mineral Board, nor shall the Louisiana State Mineral Board be obligated to refund any consideration paid by the Lessor prior to such modification, cancellation, or abrogation, including, but not limited to, bonuses, rentals and royalties.

Applicant: KEVIN J. SEVERSON

Bidder	Cash Payment	Price/Acre	Rental	Oil	Gas	Other

Legend
08060018
Active_Leases
DOQQ2004

RED RIVER PARISH

T13N - R10W

SL 18606

P.O.B.

SL 18503

RED RIVER

T13N - R11W

0 2,000 Feet
N