

TRACT 39920 - Lafourche Parish, Louisiana

All of the lands now or formerly constituting the beds and bottoms of all water bodies of every nature and description as to which title is vested in the State of Louisiana located within the geographical boundaries of the Pointe-Aux-Chenes Wildlife Management Area and not presently under mineral lease on June 11, 2008, situated in Lafourche Parish, Louisiana, and more particularly described as follows: Beginning at a Point having Coordinates of X = 2,306,572.63 and Y = 296,888.00; thence South 88 degrees 25 minutes 24 seconds West approximately 2,257 feet on boundary of Pointe Aux Chenes State Wildlife Management Area; thence Northerly, Easterly, Northerly, Easterly, Northerly, Easterly, Northerly, Easterly, Northerly and Southeasterly along the said boundary of Pointe Aux Chenes State Wildlife Management Area to a point that intersects a line that bears South 89 degrees 47 minutes 02 seconds East from a point having Coordinates of X = 2,306,572.63 and Y = 296,888.00; thence North 89 degrees 47 minutes 02 seconds West approximately 7,960 feet to the point of beginning, **LESS AND EXCEPT** that portion, if any, of Operating Agreement 185 that lies within the Textularia Sand, Reservoir L, Bully Camp Field, being defined herein as the oil and gas bearing Sand encountered between the depth of 11,529 feet and 11,709 feet (induction-electric log measurement) in the Exxon Fee B-1 Well located in Section 54, Township 19 South, Range 21 East, Lafourche Parish, Louisiana, and the TP-5 Sand, Reservoir J, Bully Camp Field, being defined herein as the oil and gas bearing Sand encountered between the depth of 10,156 feet and 10,178 feet (induction-electric log measurement) in the Exxon Benquin Corporation Well No. 1 Well located in Section 55, Township 18 South, Range 21 East, Lafourche Parish, Louisiana (This lease includes only waterbottoms claimed and owned by the state and specifically excludes any land within the Pointe-Aux-Chenes Wildlife Management Area), containing approximately **26 acres**, all as more particularly outlined on a plat on file in the Office of Mineral Resources, Department of Natural Resources. All bearings, distances and coordinates are based on Louisiana Coordinate System of 1927, (South Zone).

NOTE: The above description of the Tract nominated for lease has been provided and corrected, where required, exclusively by the nomination party. Any mineral lease selected from this Tract and awarded by the Louisiana State Mineral Board shall be without warranty of any kind, either express, implied, or statutory, including, but not limited to, the implied warranties of merchantability and fitness for a particular purpose. Should the mineral lease awarded by the Louisiana State Mineral Board be subsequently modified, cancelled or abrogated due to the existence of conflicting leases, operating agreements, private claims or other future obligations or conditions which may affect all or any portion of the leased Tract, it shall not relieve the Lessee of the obligation to pay any bonus due thereon to the Louisiana State Mineral Board, nor shall the Louisiana State Mineral Board be obligated to refund any consideration paid by the Lessor prior to such modification, cancellation, or abrogation, including, but not limited to, bonuses, rentals and royalties.

NOTE: This tract is located within the boundaries of a wildlife management area or refuge and any operations conducted thereon in conjunction with this mineral lease may be subject to rules and regulations promulgated by the Department of Wildlife and Fisheries for the protection of fish, birds and other wildlife including, but not necessarily limited to, the following:

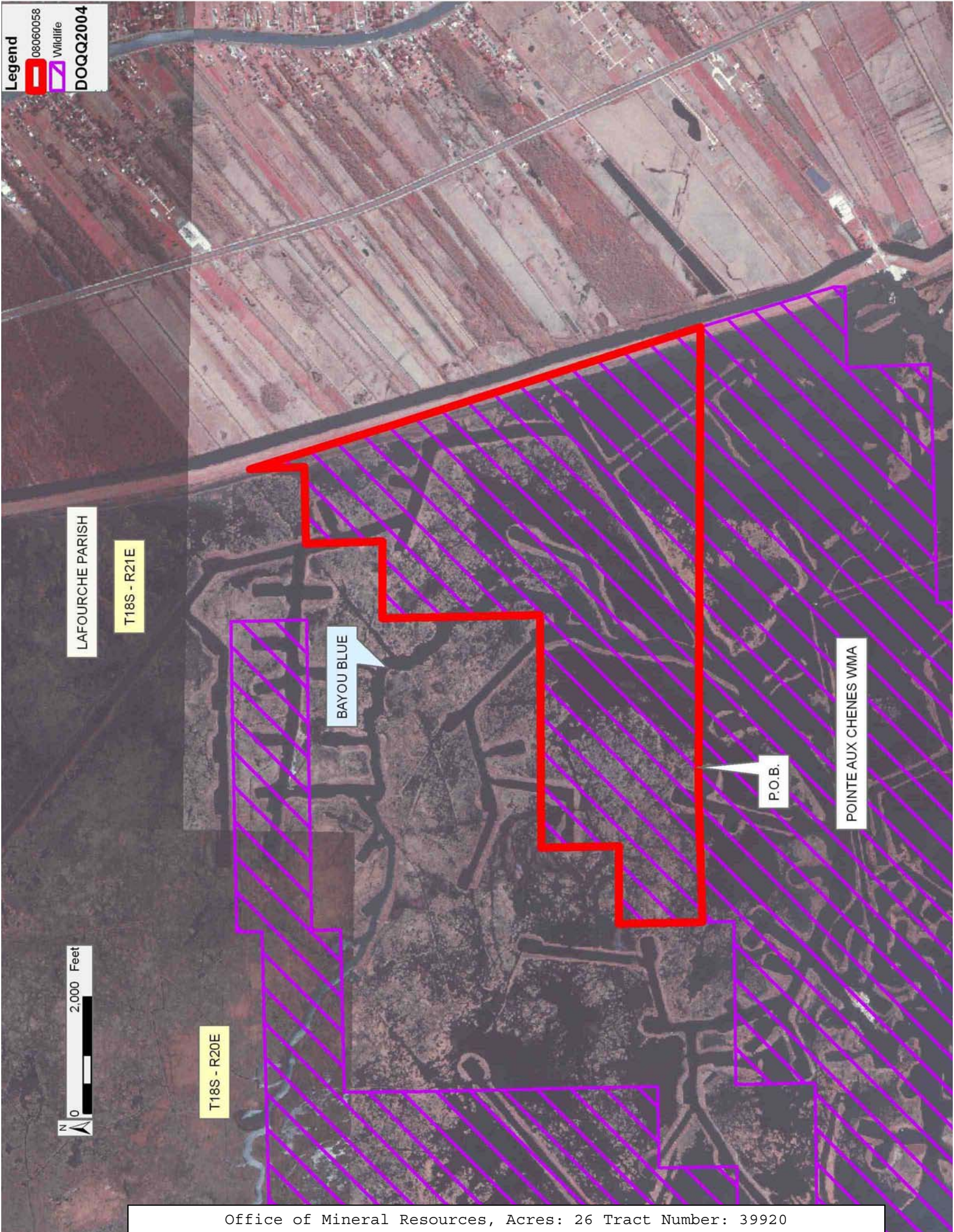
1. No activities will be allowed without written authorization from the Louisiana Department of Wildlife and Fisheries. All projects will be coordinated and approved by the appropriate WMA Supervisor prior to any activities on the wildlife management area.
2. Proposed projects will be evaluated on a case by case basis. Modifications to proposed projects may be required including, but not limited to, access routes, spoil placement, well sites, flow lines and other appurtenant structures required by the Louisiana Department of Wildlife and Fisheries.
3. Compensatory mitigation will be required to offset unavoidable wetland impacts.
4. Removal of all structures, facilities, and equipment will be required within 120 days of abandonment unless otherwise agreed to by the Department of Wildlife and Fisheries.
5. No activities will be allowed during the hunting season unless approved by the Department.
6. Compliance with the said WMA regulations will be required unless otherwise specified by the Department.
7. Prior to submitting applications for wetland permits to Federal and State permitting agencies the lease holder shall coordinate project details with the Louisiana Department of Wildlife and Fisheries, Fur and Refuge Division. Contact person for the Department will be Mike Windham at (504) 568-5886 or (225) 765-2807.

NOTE: The State of Louisiana does hereby reserve, and this lease shall be subject to, the imprescriptible right of surface use in the nature of a servitude in favor of the Department of Natural Resources, including its Offices and Commissions, for the sole purpose of implementing, constructing, servicing and maintaining approved coastal zone management and/or restoration projects. Utilization of any and all rights derived under this lease by the mineral lessee, its agents, successors or assigns, shall not interfere with nor hinder the reasonable surface use by the Department of Natural Resources, its Offices or Commissions, as herein above reserved.

Applicant: STARKS OIL CORPORATION

Bidder	Cash Payment	Price/ Acre	Rental	Oil	Gas	Other

Legend
08060058
Wildlife
DOQQ2004



TRACT 39921 - Lafourche Parish, Louisiana

All of the lands now or formerly constituting the beds and bottoms of all water bodies of every nature and description as to which title is vested in the State of Louisiana located within the geographical boundaries of the Pointe-Aux-Chenes Wildlife Management Area and not presently under mineral lease on June 11, 2008, situated in Lafourche Parish, Louisiana, and more particularly described as follows: Beginning at a Point having Coordinates of X = 2,288,119.40 and Y = 295,893.68; thence North 00 degrees 51 minutes 09 seconds West approximately 8,109 feet to a point on the boundary of Pointe Aux Chenes State Wildlife Management Area; thence Easterly, along the said boundary of Pointe Aux Chenes State Wildlife Management Area to a point that intersects a line that bears North 01 degrees 18 minutes 22 seconds West and having midpoint Coordinates of X = 2,304,163.59 and Y = 303,956.76; thence South 01 degrees 18 minutes 22 seconds East approximately 856 feet along said line to a point on said boundary of Pointe Aux Chenes State Wildlife Management Area; thence Southerly, Westerly, Southerly, Westerly, Southerly and Westerly along the said boundary of Pointe Aux Chenes State Wildlife Management Area to a point that intersects a line that bears North 88 degrees 16 minutes 47 seconds East from a point having Coordinates of X = 2,296,216.60 and Y = 296,136.87; thence South 88 degrees 16 minutes 47 seconds West approximately 10,602 feet along said line to the point of beginning, **LESS AND EXCEPT** that portion, if any, of Operating Agreement 185 that lies within the Textularia Sand, Reservoir L, Bully Camp Field, being defined herein as the oil and gas bearing Sand encountered between the depth of 11,529 feet and 11,709 feet (induction-electric log measurement) in the Exxon Fee B-1 Well located in Section 54, Township 19 South, Range 21 East, Lafourche Parish, Louisiana, and the TP-5 Sand, Reservoir J, Bully Camp Field, being defined herein as the oil and gas bearing Sand encountered between the depth of 10,156 feet and 10,178 feet (induction-electric log measurement) in the Exxon Benquin Corporation Well No. 1 Well located in Section 55, Township 18 South, Range 21 East, Lafourche Parish, Louisiana (This lease includes only waterbottoms claimed and owned by the state and specifically excludes any land within the Pointe-Aux-Chenes Wildlife Management Area), containing approximately **8 acres**, all as more particularly outlined on a plat on file in the Office of Mineral Resources, Department of Natural Resources. All bearings, distances and coordinates are based on Louisiana Coordinate System of 1927, (South Zone).

NOTE: The above description of the Tract nominated for lease has been provided and corrected, where required, exclusively by the nomination party. Any mineral lease selected from this Tract and awarded by the Louisiana State Mineral Board shall be without warranty of any kind, either express, implied, or statutory, including, but not limited to, the implied warranties of merchantability and fitness for a particular purpose. Should the mineral lease awarded by the Louisiana State Mineral Board be subsequently modified, cancelled or abrogated due to the existence of conflicting leases, operating agreements, private claims or

other future obligations or conditions which may affect all or any portion of the leased Tract, it shall not relieve the Lessee of the obligation to pay any bonus due thereon to the Louisiana State Mineral Board, nor shall the Louisiana State Mineral Board be obligated to refund any consideration paid by the Lessor prior to such modification, cancellation, or abrogation, including, but not limited to, bonuses, rentals and royalties.

NOTE: This tract is located within the boundaries of a wildlife management area or refuge and any operations conducted thereon in conjunction with this mineral lease may be subject to rules and regulations promulgated by the Department of Wildlife and Fisheries for the protection of fish, birds and other wildlife including, but not necessarily limited to, the following:

1. No activities will be allowed without written authorization from the Louisiana Department of Wildlife and Fisheries. All projects will be coordinated and approved by the appropriate WMA Supervisor prior to any activities on the wildlife management area.
2. Proposed projects will be evaluated on a case by case basis. Modifications to proposed projects may be required including, but not limited to, access routes, spoil placement, well sites, flow lines and other appurtenant structures required by the Louisiana Department of Wildlife and Fisheries.
3. Compensatory mitigation will be required to offset unavoidable wetland impacts.
4. Removal of all structures, facilities, and equipment will be required within 120 days of abandonment unless otherwise agreed to by the Department of Wildlife and Fisheries.
5. No activities will be allowed during the hunting season unless approved by the Department.
6. Compliance with the said WMA regulations will be required unless otherwise specified by the Department.
7. Prior to submitting applications for wetland permits to Federal and State permitting agencies the lease holder shall coordinate project details with the Louisiana Department of Wildlife and Fisheries, Fur and Refuge Division. Contact person for the Department will be Mike Windham at (504) 568-5886 or (225) 765-2807.

NOTE: The State of Louisiana does hereby reserve, and this lease shall be subject to, the imprescriptible right of surface use in the nature of a servitude in favor of the Department of Natural Resources, including its Offices and Commissions, for the sole purpose of implementing, constructing, servicing and maintaining approved coastal zone management and/or restoration projects. Utilization of any and all rights derived under this lease by the mineral lessee, its agents, successors or assigns, shall not interfere with nor hinder the reasonable surface use by the Department of Natural Resources, its Offices or Commissions, as herein above reserved.

Applicant: STARKS OIL CORPORATION

Bidder	Cash Payment	Price/ Acre	Rental	Oil	Gas	Other

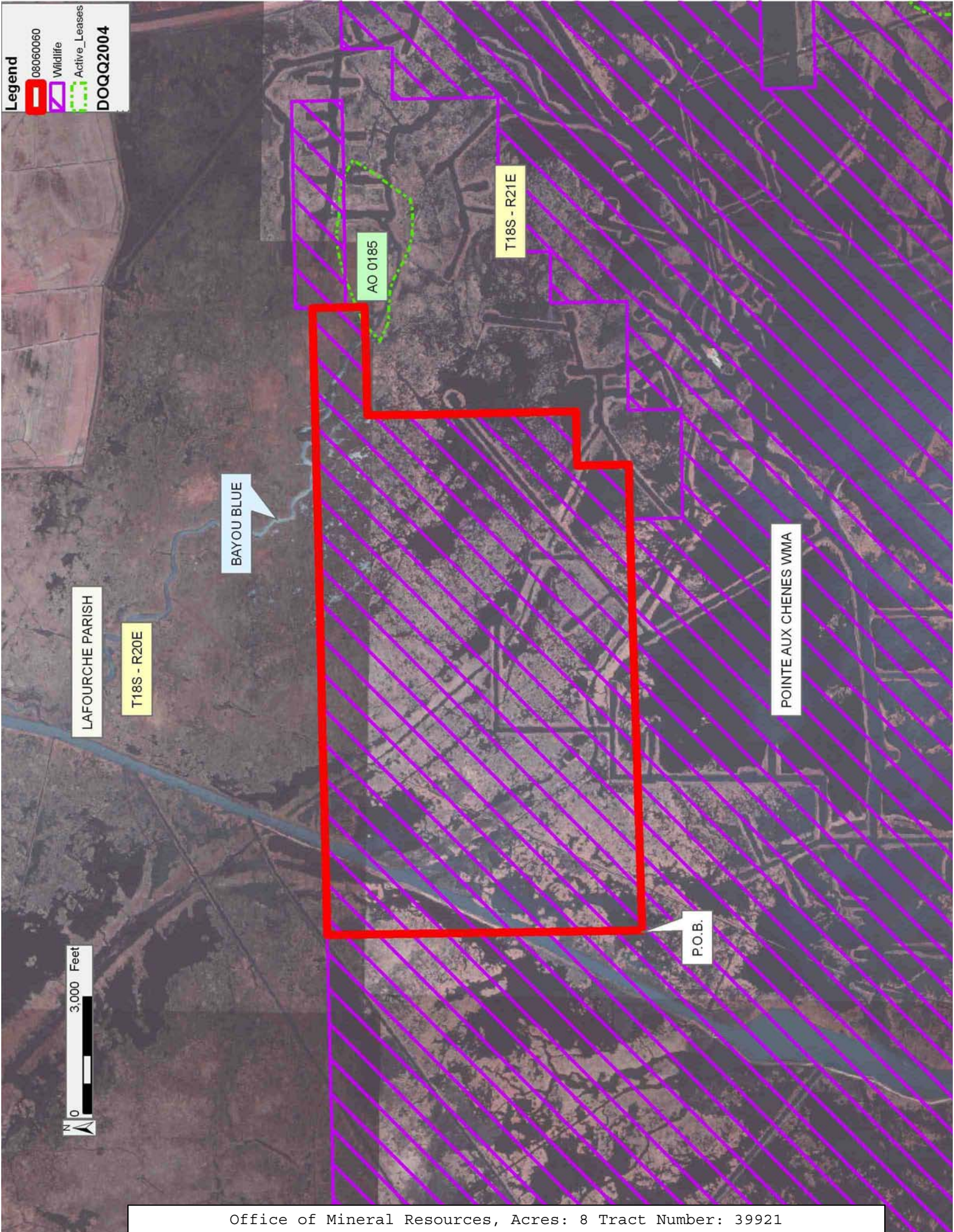
Legend

08060060

Wildlife

Active_Leases

DOQQ2004



TRACT 39922 - Lafourche Parish, Louisiana

All of the lands now or formerly constituting the beds and bottoms of all water bodies of every nature and description as to which title is vested in the State of Louisiana located within the geographical boundaries of the Pointe-Aux-Chenes Wildlife Management Area and not presently under mineral lease on June 11, 2008, situated in Lafourche Parish, Louisiana, and more particularly described as follows: Beginning at a Point having Coordinates of X = 2,304,493.34 and Y = 286,367.28; thence North 00 degrees 58 minutes 13 seconds West approximately 9,922 feet to a point on the boundary of Pointe Aux Chenes State Wildlife Management Area; thence Northerly along the said boundary of Pointe Aux Chenes State Wildlife Management Area to a point that intersects a line that bears South 88 degrees 25 minutes 24 seconds West from a point having Coordinates of X = 2,306,572.63 and Y = 296,888.00; thence North 88 degrees 25 minutes 24 seconds East approximately 2,257 feet to a point having Coordinates of X = 2,306,572.63 and Y = 296,888.00; Thence South 89 degrees 47 minutes 02 seconds East approximately 7,960 feet to a point on the said boundary of Pointe Aux Chenes State Wildlife Management Area; thence Southeasterly, Southerly, Westerly, Southerly, Westerly, Southerly, Easterly, Southeasterly and Westerly along the said boundary of Pointe Aux Chenes State Wildlife Management Area to a point that intersects a line that bears North 01 degrees 08 minutes 49 seconds East from a point having Coordinates of X = 2,307,664.77 and Y = 286,430.78; thence North 01 degrees 08 minutes 49 seconds West approximately 5,622 feet to a point having Coordinates of X = 2,307,664.77 and Y = 286,430.78; thence South 88 degrees 51 minutes 11 seconds West 3,172.07 feet to the point of beginning, **LESS AND EXCEPT** that portion, if any, of Operating Agreement 185 that lies within the Textularia Sand, Reservoir L, Bully Camp Field, being defined herein as the oil and gas bearing Sand encountered between the depth of 11,529 feet and 11,709 feet (induction-electric log measurement) in the Exxon Fee B-1 Well located in Section 54, Township 19 South, Range 21 East, Lafourche Parish, Louisiana, and the TP-5 Sand, Reservoir J, Bully Camp Field, being defined herein as the oil and gas bearing Sand encountered between the depth of 10,156 feet and 10,178 feet (induction-electric log measurement) in the Exxon Benquin Corporation Well No. 1 Well located in Section 55, Township 18 South, Range 21 East, Lafourche Parish, Louisiana beginning (This lease includes only waterbottoms claimed and owned by the state and specifically excludes any land within the Pointe-Aux-Chenes Wildlife Management Area), containing approximately **133 acres**

, all as more particularly outlined on a plat on file in the Office of Mineral Resources, Department of Natural Resources. All bearings, distances and coordinates are based on Louisiana Coordinate System of 1927, (South Zone).

NOTE: The above description of the Tract nominated for lease has been provided and corrected, where required, exclusively by the nomination

party. Any mineral lease selected from this Tract and awarded by the Louisiana State Mineral Board shall be without warranty of any kind, either express, implied, or statutory, including, but not limited to, the implied warranties of merchantability and fitness for a particular purpose. Should the mineral lease awarded by the Louisiana State Mineral Board be subsequently modified, cancelled or abrogated due to the existence of conflicting leases, operating agreements, private claims or other future obligations or conditions which may affect all or any portion of the leased Tract, it shall not relieve the Lessee of the obligation to pay any bonus due thereon to the Louisiana State Mineral Board, nor shall the Louisiana State Mineral Board be obligated to refund any consideration paid by the Lessor prior to such modification, cancellation, or abrogation, including, but not limited to, bonuses, rentals and royalties.

NOTE: This tract is located within the boundaries of a wildlife management area or refuge and any operations conducted thereon in conjunction with this mineral lease may be subject to rules and regulations promulgated by the Department of Wildlife and Fisheries for the protection of fish, birds and other wildlife including, but not necessarily limited to, the following:

1. No activities will be allowed without written authorization from the Louisiana Department of Wildlife and Fisheries. All projects will be coordinated and approved by the appropriate WMA Supervisor prior to any activities on the wildlife management area.
2. Proposed projects will be evaluated on a case by case basis. Modifications to proposed projects may be required including, but not limited to, access routes, spoil placement, well sites, flow lines and other appurtenant structures required by the Louisiana Department of Wildlife and Fisheries.
3. Compensatory mitigation will be required to offset unavoidable wetland impacts.
4. Removal of all structures, facilities, and equipment will be required within 120 days of abandonment unless otherwise agreed to by the Department of Wildlife and Fisheries.
5. No activities will be allowed during the hunting season unless approved by the Department.
6. Compliance with the said WMA regulations will be required unless otherwise specified by the Department.
7. Prior to submitting applications for wetland permits to Federal and State permitting agencies the lease holder shall coordinate project details with the Louisiana Department of Wildlife and Fisheries, Fur and Refuge Division. Contact person for the Department will be Mike Windham at (504) 568-5886 or (225) 765-2807.




NOTE: The State of Louisiana does hereby reserve, and this lease shall be subject to, the imprescriptible right of surface use in the nature of a servitude in favor of the Department of Natural Resources, including its Offices and Commissions, for the sole purpose of implementing, constructing, servicing and maintaining approved coastal zone management

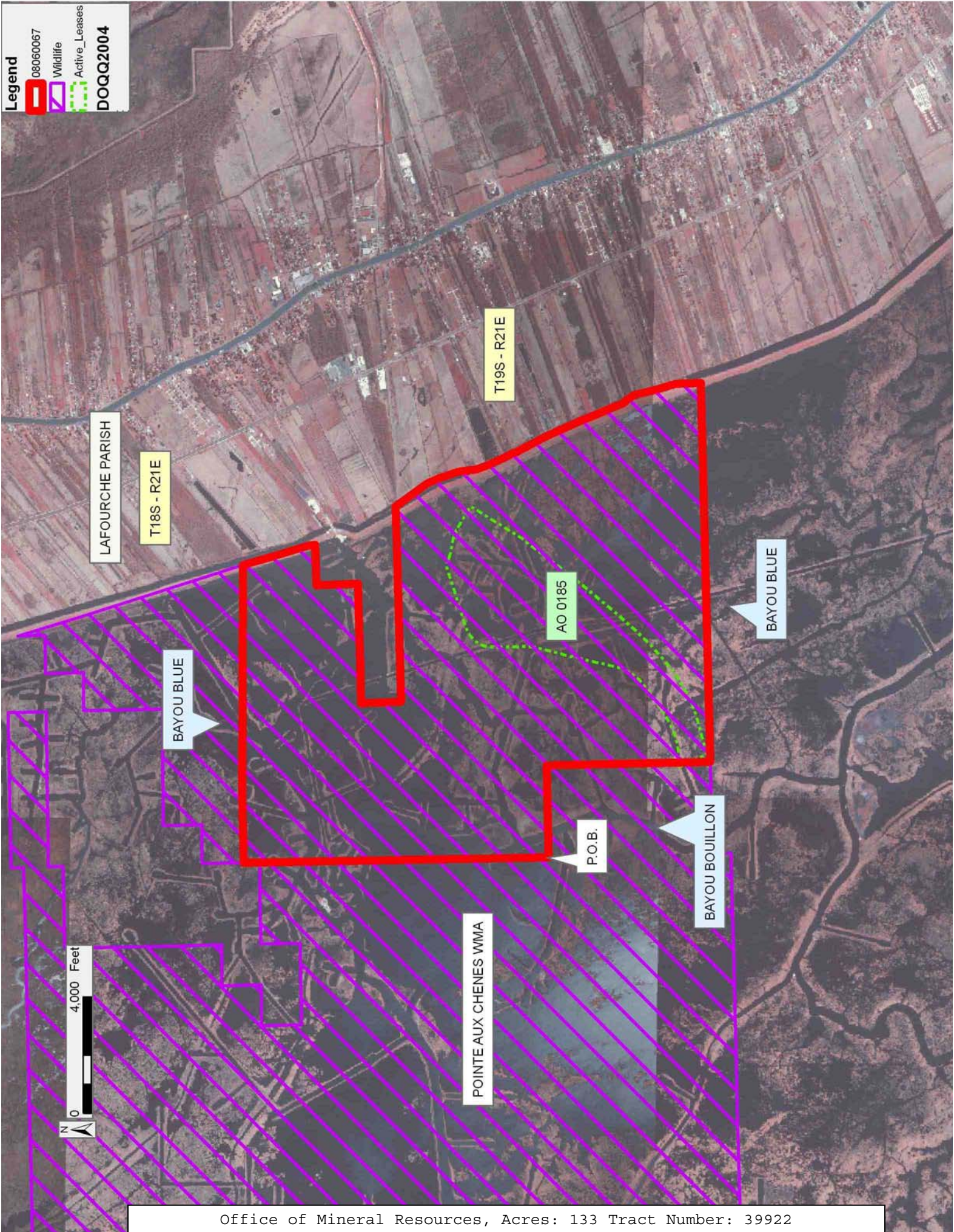
and/or restoration projects. Utilization of any and all rights derived under this lease by the mineral lessee, its agents, successors or assigns, shall not interfere with nor hinder the reasonable surface use by the Department of Natural Resources, its Offices or Commissions, as herein above reserved.

Applicant: STARKS OIL CORPORATION

Bidder	Cash Payment	Price/ Acre	Rental	Oil	Gas	Other

Legend

08060067
 Wildlife
 Active_Leases
 DOQQ2004



TRACT 39923 - Terrebonne Parish, Louisiana

All of the lands now or formerly constituting the beds and bottoms of all water bodies of every nature and description as to which title is vested in the State of Louisiana located within the geographical boundaries of the Pointe-Aux-Chenes Wildlife Management Area and not presently under mineral lease on June 11, 2008, situated in Terrebonne Parish, Louisiana, and more particularly described as follows: Being the portion of the Northeast quarter of the Southwest quarter of Section 55, Township 18 South, Range 19 East that lies in Terrebonne Parish within the boundary of Pointe Aux Chenes State Wildlife Management Area (This lease includes only waterbottoms claimed and owned by the state and specifically excludes any land within the Pointe-Aux-Chenes Wildlife Management Area), containing approximately **0.1 acres**, all as more particularly outlined on a plat on file in the Office of Mineral Resources, Department of Natural Resources. All bearings, distances and coordinates are based on Louisiana Coordinate System of 1927, (South Zone).

NOTE: The above description of the Tract nominated for lease has been provided and corrected, where required, exclusively by the nomination party. Any mineral lease selected from this Tract and awarded by the Louisiana State Mineral Board shall be without warranty of any kind, either express, implied, or statutory, including, but not limited to, the implied warranties of merchantability and fitness for a particular purpose. Should the mineral lease awarded by the Louisiana State Mineral Board be subsequently modified, cancelled or abrogated due to the existence of conflicting leases, operating agreements, private claims or other future obligations or conditions which may affect all or any portion of the leased Tract, it shall not relieve the Lessee of the obligation to pay any bonus due thereon to the Louisiana State Mineral Board, nor shall the Louisiana State Mineral Board be obligated to refund any consideration paid by the Lessor prior to such modification, cancellation, or abrogation, including, but not limited to, bonuses, rentals and royalties.

NOTE: This tract is located within the boundaries of a wildlife management area or refuge and any operations conducted thereon in conjunction with this mineral lease may be subject to rules and regulations promulgated by the Department of Wildlife and Fisheries for the protection of fish, birds and other wildlife including, but not necessarily limited to, the following:

1. No activities will be allowed without written authorization from the Louisiana Department of Wildlife and Fisheries. All projects will be coordinated and approved by the appropriate WMA Supervisor prior to any activities on the wildlife management area.
2. Proposed projects will be evaluated on a case by case basis. Modifications to proposed projects may be required including, but not limited to, access routes, spoil placement, well sites, flow lines and other appurtenant structures required by the Louisiana Department of Wildlife and Fisheries.

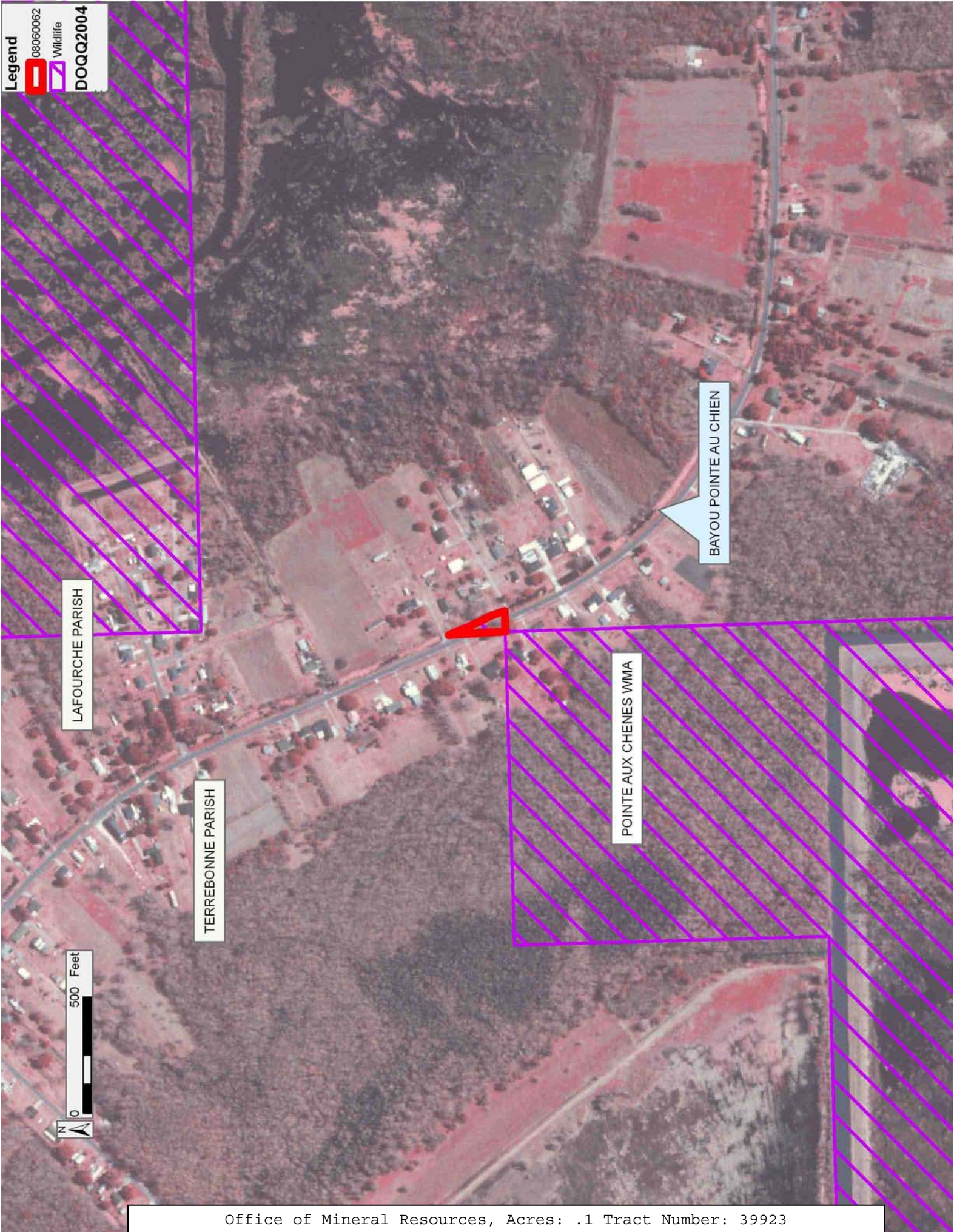
3. Compensatory mitigation will be required to offset unavoidable wetland impacts.
4. Removal of all structures, facilities, and equipment will be required within 120 days of abandonment unless otherwise agreed to by the Department of Wildlife and Fisheries.
5. No activities will be allowed during the hunting season unless approved by the Department.
6. Compliance with the said WMA regulations will be required unless otherwise specified by the Department.
7. Prior to submitting applications for wetland permits to Federal and State permitting agencies the lease holder shall coordinate project details with the Louisiana Department of Wildlife and Fisheries, Fur and Refuge Division. Contact person for the Department will be Mike Windham at (504) 568-5886 or (225)765-2807.

NOTE: The State of Louisiana does hereby reserve, and this lease shall be subject to, the imprescriptible right of surface use in the nature of a servitude in favor of the Department of Natural Resources, including its Offices and Commissions, for the sole purpose of implementing, constructing, servicing and maintaining approved coastal zone management and/or restoration projects. Utilization of any and all rights derived under this lease by the mineral lessee, its agents, successors or assigns, shall not interfere with nor hinder the reasonable surface use by the Department of Natural Resources, its Offices or Commissions, as herein above reserved.

Applicant: STARKS OIL CORPORATION

Bidder	Cash Payment	Price/ Acre	Rental	Oil	Gas	Other

Legend
08060062
Wildlife
DOQQ2004



TRACT 39924 - Lafourche Parish, Louisiana

All of the lands now or formerly constituting the beds and bottoms of all water bodies of every nature and description as to which title is vested in the State of Louisiana located within the geographical boundaries of the Pointe-Aux-Chenes Wildlife Management Area and not presently under mineral lease on June 11, 2008, situated in Lafourche Parish, Louisiana, and more particularly described as follows: Beginning at a Point having Coordinates of X = 2,296,216.60 and Y = 296,136.87; thence South 01 degrees 04 minutes 00 seconds East 11,240.87 feet to a point having Coordinates of X = 2,296,425.88 and Y = 284,897.95; thence South 01 degrees 03 minutes 51 seconds East approximately 5,002 feet to a point on the boundary of Pointe Aux Chenes State Wildlife Management Area; thence Westerly along the said boundary of Pointe Aux Chenes State Wildlife Management Area to a point that intersects a line that bears North 88 degrees 36 minutes 18 seconds East and a midpoint having Coordinates of X = 2,282,028.68 and Y = 279,535.23; thence South 88 degrees 36 minutes 18 seconds West approximately 3,037 feet along said line to a point on the said boundary of Pointe Aux Chenes State Wildlife Management Area; thence Westerly, Northerly, along the said boundary of Pointe Aux Chenes State Wildlife Management Area to a point that intersects a line that bears South 00 degrees 10 minutes 55 seconds West from a point having Coordinates of X = 2,279,063.59 and Y = 284,854.35; thence North 00 degrees 10 minutes 55 seconds East approximately 1,342 feet along said line to a point having Coordinates of X = 2,279,063.59 and Y = 284,854.35; thence North 88 degrees 11 minutes 56 seconds East 1,013.10 feet to a point having Coordinates of X = 2,280,076.19 and Y = 284,886.19; thence North 01 degrees 24 minutes 57 seconds West 10,809.37 feet to a point having Coordinates of X = 2,279,809.09 and Y = 295,692.26; thence North 88 degrees 36 minutes 42 seconds East 8,312.75 feet to a point having Coordinates of X = 2,288,119.40 and Y = 295,893.68; thence North 88 degrees 16 minutes 47 seconds East 8,100.85 feet to the point of beginning (This lease includes only waterbottoms claimed and owned by the state and specifically excludes any land within the Pointe-Aux-Chenes Wildlife Management Area), containing approximately **264 acres**, all as more particularly outlined on a plat on file in the Office of Mineral Resources, Department of Natural Resources. All bearings, distances and coordinates are based on Louisiana Coordinate System of 1927, (South Zone).

NOTE: The above description of the Tract nominated for lease has been provided and corrected, where required, exclusively by the nomination party. Any mineral lease selected from this Tract and awarded by the Louisiana State Mineral Board shall be without warranty of any kind, either express, implied, or statutory, including, but not limited to, the implied warranties of merchantability and fitness for a particular purpose. Should the mineral lease awarded by the Louisiana State Mineral Board be subsequently modified, cancelled or abrogated due to the existence of conflicting leases, operating agreements, private claims or other future obligations or conditions which may affect all or any portion

of the leased Tract, it shall not relieve the Lessee of the obligation to pay any bonus due thereon to the Louisiana State Mineral Board, nor shall the Louisiana State Mineral Board be obligated to refund any consideration paid by the Lessor prior to such modification, cancellation, or abrogation, including, but not limited to, bonuses, rentals and royalties.

NOTE: This tract is located within the boundaries of a wildlife management area or refuge and any operations conducted thereon in conjunction with this mineral lease may be subject to rules and regulations promulgated by the Department of Wildlife and Fisheries for the protection of fish, birds and other wildlife including, but not necessarily limited to, the following:

1. No activities will be allowed without written authorization from the Louisiana Department of Wildlife and Fisheries. All projects will be coordinated and approved by the appropriate WMA Supervisor prior to any activities on the wildlife management area.
2. Proposed projects will be evaluated on a case by case basis. Modifications to proposed projects may be required including, but not limited to, access routes, spoil placement, well sites, flow lines and other appurtenant structures required by the Louisiana Department of Wildlife and Fisheries.
3. Compensatory mitigation will be required to offset unavoidable wetland impacts.
4. Removal of all structures, facilities, and equipment will be required within 120 days of abandonment unless otherwise agreed to by the Department of Wildlife and Fisheries.
5. No activities will be allowed during the hunting season unless approved by the Department.
6. Compliance with the said WMA regulations will be required unless otherwise specified by the Department.
7. Prior to submitting applications for wetland permits to Federal and State permitting agencies the lease holder shall coordinate project details with the Louisiana Department of Wildlife and Fisheries, Fur and Refuge Division. Contact person for the Department will be Mike Windham at (504) 568-5886 or (225) 765-2807.

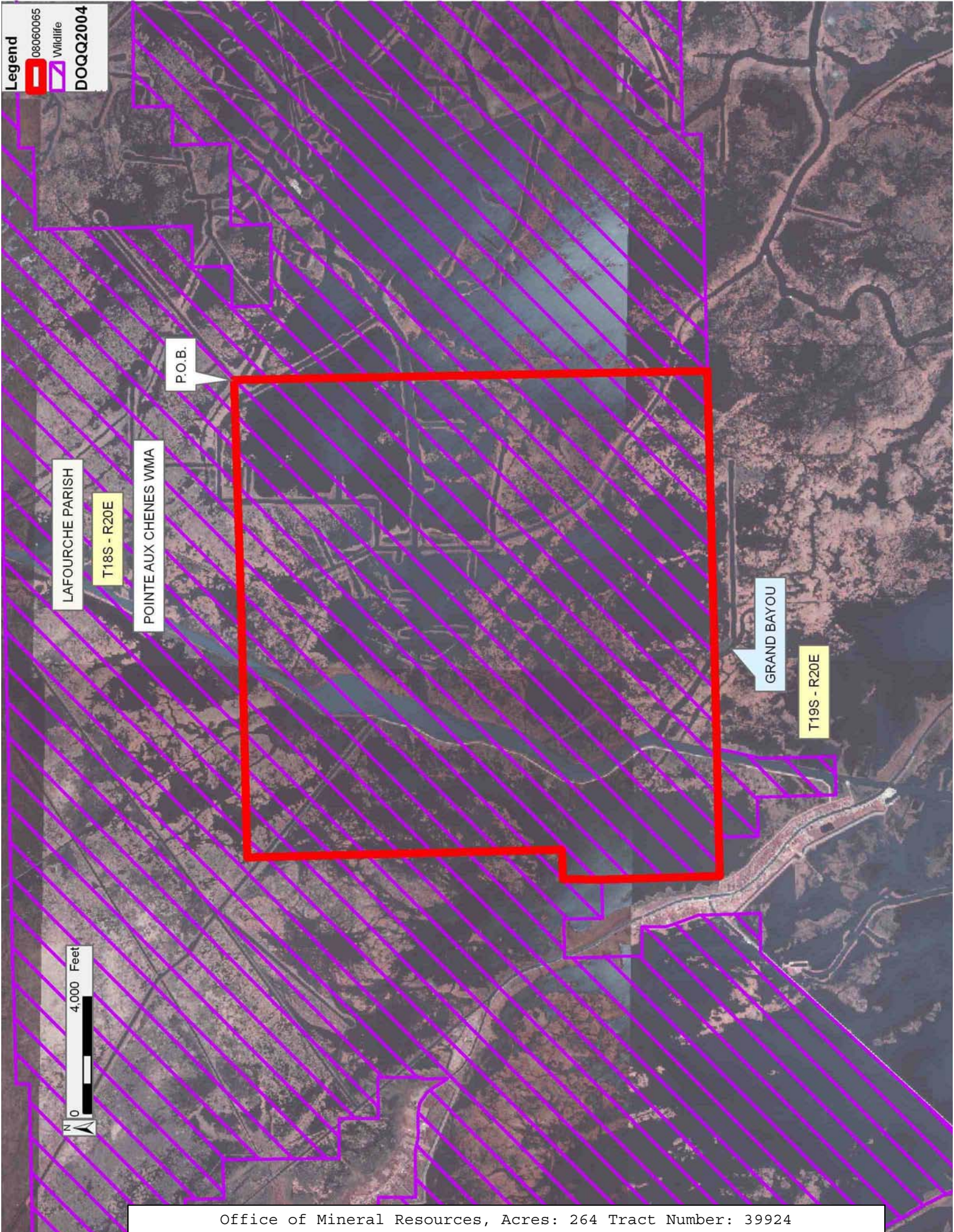
NOTE: The State of Louisiana does hereby reserve, and this lease shall be subject to, the imprescriptible right of surface use in the nature of a servitude in favor of the Department of Natural Resources, including its Offices and Commissions, for the sole purpose of implementing, constructing, servicing and maintaining approved coastal zone management and/or restoration projects. Utilization of any and all rights derived under this lease by the mineral lessee, its agents, successors or assigns, shall not interfere with nor hinder the reasonable surface use by the Department of Natural Resources, its Offices or Commissions, as herein above reserved.

Applicant: STARKS OIL CORPORATION

Bidder	Cash Payment	Price/ Acre	Rental	Oil	Gas	Other

Legend

08060065
Wildlife
DOQQ2004



TRACT 39925 - Lafourche and Terrebonne Parishes, Louisiana

All of the lands now or formerly constituting the beds and bottoms of all water bodies of every nature and description as to which title is vested in the State of Louisiana located within the geographical boundaries of the Pointe-Aux-Chenes Wildlife Management Area and not presently under mineral lease on June 11, 2008, situated in Lafourche and Terrebonne Parishes, Louisiana, and more particularly described as follows: Beginning at a Point having Coordinates of X = 2,261,605.32 and Y = 284,305.39; thence North 05 degrees 48 minutes 37 seconds East approximately 10,739 feet to a point on the boundary of Pointe Aux Chenes State Wildlife Management Area; thence Southerly, Easterly, Southerly, Easterly, Southerly, Easterly, Southerly, Easterly, Southeasterly, Southwesterly, Southeasterly, Northeasterly, Southeasterly, Northerly, Easterly, Northerly, Westerly, Northerly, Westerly and Northerly along the said boundary of Pointe Aux Chenes State Wildlife Management Area to a point that intersects a line that bears South 89 degrees 17 minutes 11 seconds West from a point having Coordinates of X = 2,272,130.53 and Y = 295,106.53; thence North 89 degrees 17 minutes 11 seconds East approximately 2,679 feet to a point having Coordinates of X = 2,272,130.53 and Y = 295,106.53; thence North 00 degrees 36 minutes 13 seconds West 399.54 feet to a point having Coordinates of X = 2,272,126.32 and Y = 295,506.05; thence North 88 degrees 36 minutes 42 seconds East 7,685.03 feet to a point having Coordinates of X = 2,279,809.09 and Y = 295,692.26; thence South 01 degrees 24 minutes 57 seconds East 10,809.37 feet to a point having Coordinates of X = 2,280,076.19 and Y = 284,886.19; thence South 88 degrees 11 minutes 56 seconds West 1,013.10 feet to a point having Coordinates of X = 2,279,063.59 and Y = 284,854.35; thence South 88 degrees 54 minutes 04 seconds West approximately 1,375 feet to a point on the said boundary of Pointe Aux Chenes State Wildlife Management Area; thence Westerly, along the said boundary of Pointe Aux Chenes State Wildlife Management Area to a point that bears North 88 degrees 03 minutes 25 seconds East approximately 14,762 from the point of beginning; thence South 88 degrees 03 minutes 25 seconds West approximately 14,762 feet to the point of beginning (This lease includes only waterbottoms claimed and owned by the state and specifically excludes any land within the Pointe-Aux-Chenes Wildlife Management Area), containing approximately **13 acres**, all as more particularly outlined on a plat on file in the Office of Mineral Resources, Department of Natural Resources. All bearings, distances and coordinates are based on Louisiana Coordinate System of 1927, (South Zone).

NOTE: The above description of the Tract nominated for lease has been provided and corrected, where required, exclusively by the nomination party. Any mineral lease selected from this Tract and awarded by the Louisiana State Mineral Board shall be without warranty of any kind, either express, implied, or statutory, including, but not limited to, the implied warranties of merchantability and fitness for a particular purpose. Should the mineral lease awarded by the Louisiana State Mineral Board be subsequently modified, cancelled or abrogated due to the

existence of conflicting leases, operating agreements, private claims or other future obligations or conditions which may affect all or any portion of the leased Tract, it shall not relieve the Lessee of the obligation to pay any bonus due thereon to the Louisiana State Mineral Board, nor shall the Louisiana State Mineral Board be obligated to refund any consideration paid by the Lessor prior to such modification, cancellation, or abrogation, including, but not limited to, bonuses, rentals and royalties.

NOTE: This tract is located within the boundaries of a wildlife management area or refuge and any operations conducted thereon in conjunction with this mineral lease may be subject to rules and regulations promulgated by the Department of Wildlife and Fisheries for the protection of fish, birds and other wildlife including, but not necessarily limited to, the following:

1. No activities will be allowed without written authorization from the Louisiana Department of Wildlife and Fisheries. All projects will be coordinated and approved by the appropriate WMA Supervisor prior to any activities on the wildlife management area.
2. Proposed projects will be evaluated on a case by case basis. Modifications to proposed projects may be required including, but not limited to, access routes, spoil placement, well sites, flow lines and other appurtenant structures required by the Louisiana Department of Wildlife and Fisheries.
3. Compensatory mitigation will be required to offset unavoidable wetland impacts.
4. Removal of all structures, facilities, and equipment will be required within 120 days of abandonment unless otherwise agreed to by the Department of Wildlife and Fisheries.
5. No activities will be allowed during the hunting season unless approved by the Department.
6. Compliance with the said WMA regulations will be required unless otherwise specified by the Department.
7. Prior to submitting applications for wetland permits to Federal and State permitting agencies the lease holder shall coordinate project details with the Louisiana Department of Wildlife and Fisheries, Fur and Refuge Division. Contact person for the Department will be Mike Windham at (504) 568-5886 or (225) 765-2807.

NOTE: The State of Louisiana does hereby reserve, and this lease shall be subject to, the imprescriptible right of surface use in the nature of a servitude in favor of the Department of Natural Resources, including its Offices and Commissions, for the sole purpose of implementing, constructing, servicing and maintaining approved coastal zone management and/or restoration projects. Utilization of any and all rights derived under this lease by the mineral lessee, its agents, successors or assigns, shall not interfere with nor hinder the reasonable surface use by the Department of Natural Resources, its Offices or Commissions, as herein above reserved.

Applicant: STARKS OIL CORPORATION

Bidder	Cash Payment	Price/ Acre	Rental	Oil	Gas	Other

Legend

08060064

Wildlife

Counties

DOQQ2004

0

3,000 Feet

N

LAFOURCHE PARISH

POINTE AUX CHENES WMA

BAYOU POINTE AU CHIEN

TERREBONNE PARISH

P.O.B.

T18S - R20E

T19S - R19E

Office of Mineral Resources, Acres: 13 Tract Number: 39925

TRACT 39926 - Lafourche Parish, Louisiana

All of the lands now or formerly constituting the beds and bottoms of all water bodies of every nature and description as to which title is vested in the State of Louisiana located within the geographical boundaries of the Pointe-Aux-Chenes Wildlife Management Area and not presently under mineral lease on June 11, 2008, situated in Lafourche Parish, Louisiana, and more particularly described as follows: Beginning at a Point having Coordinates of X = 2,304,493.34 and Y = 286,367.28; thence North 88 degrees 51 minutes 11 seconds East 3,172.07 feet to a point having Coordinates of X = 2,307,664.77 and Y = 286,430.78; thence South 01 degrees 08 minutes 49 seconds East approximately 5,623 feet to a point on the boundary of Pointe Aux Chenes State Wildlife Management Area; thence Westerly, Southerly and Westerly, along the said boundary of Pointe Aux Chenes State Wildlife Management Area, to a point that intersects a line that bears South 01 degrees 03 minutes 51 seconds East from a coordinate X = 2,296,425.88 and Y = 284,897.95; thence North 01 degrees 03 minutes 51 seconds West approximately 5,005 feet along said line to a point having Coordinates of X = 2,296,425.88 and Y = 284,897.95; thence North 88 degrees 51 minutes 11 seconds East 6,196.27 feet to a point having Coordinates of X = 2,302,620.91 and Y = 285,021.97; thence North 01 degrees 08 minutes 49 seconds West 1,307.56 feet to a point having Coordinates of X = 2,302,594.74 and Y = 286,329.27; thence North 88 degrees 51 minutes 11 seconds East 1,898.98 feet to the point of beginning (This lease includes only waterbottoms claimed and owned by the state and specifically excludes any land within the Pointe-Aux-Chenes Wildlife Management Area), containing approximately **47 acres**, all as more particularly outlined on a plat on file in the Office of Mineral Resources, Department of Natural Resources. All bearings, distances and coordinates are based on Louisiana Coordinate System of 1927, (South Zone).

NOTE: The above description of the Tract nominated for lease has been provided and corrected, where required, exclusively by the nomination party. Any mineral lease selected from this Tract and awarded by the Louisiana State Mineral Board shall be without warranty of any kind, either express, implied, or statutory, including, but not limited to, the implied warranties of merchantability and fitness for a particular purpose. Should the mineral lease awarded by the Louisiana State Mineral Board be subsequently modified, cancelled or abrogated due to the existence of conflicting leases, operating agreements, private claims or other future obligations or conditions which may affect all or any portion of the leased Tract, it shall not relieve the Lessee of the obligation to pay any bonus due thereon to the Louisiana State Mineral Board, nor shall the Louisiana State Mineral Board be obligated to refund any consideration paid by the Lessor prior to such modification, cancellation, or abrogation, including, but not limited to, bonuses, rentals and royalties.

NOTE: This tract is located within the boundaries of a wildlife management area or refuge and any operations conducted thereon in conjunction with

this mineral lease may be subject to rules and regulations promulgated by the Department of Wildlife and Fisheries for the protection of fish, birds and other wildlife including, but not necessarily limited to, the following:

1. No activities will be allowed without written authorization from the Louisiana Department of Wildlife and Fisheries. All projects will be coordinated and approved by the appropriate WMA Supervisor prior to any activities on the wildlife management area.
2. Proposed projects will be evaluated on a case by case basis. Modifications to proposed projects may be required including, but not limited to, access routes, spoil placement, well sites, flow lines and other appurtenant structures required by the Louisiana Department of Wildlife and Fisheries.
3. Compensatory mitigation will be required to offset unavoidable wetland impacts.
4. Removal of all structures, facilities, and equipment will be required within 120 days of abandonment unless otherwise agreed to by the Department of Wildlife and Fisheries.
5. No activities will be allowed during the hunting season unless approved by the Department.
6. Compliance with the said WMA regulations will be required unless otherwise specified by the Department.
7. Prior to submitting applications for wetland permits to Federal and State permitting agencies the lease holder shall coordinate project details with the Louisiana Department of Wildlife and Fisheries, Fur and Refuge Division. Contact person for the Department will be Mike Windham at (504) 568-5886 or (225)765-2807.

NOTE: The State of Louisiana does hereby reserve, and this lease shall be subject to, the imprescriptible right of surface use in the nature of a servitude in favor of the Department of Natural Resources, including its Offices and Commissions, for the sole purpose of implementing, constructing, servicing and maintaining approved coastal zone management and/or restoration projects. Utilization of any and all rights derived under this lease by the mineral lessee, its agents, successors or assigns, shall not interfere with nor hinder the reasonable surface use by the Department of Natural Resources, its Offices or Commissions, as herein above reserved.

Applicant: STARKS OIL CORPORATION

Bidder	Cash Payment	Price/ Acre	Rental	Oil	Gas	Other

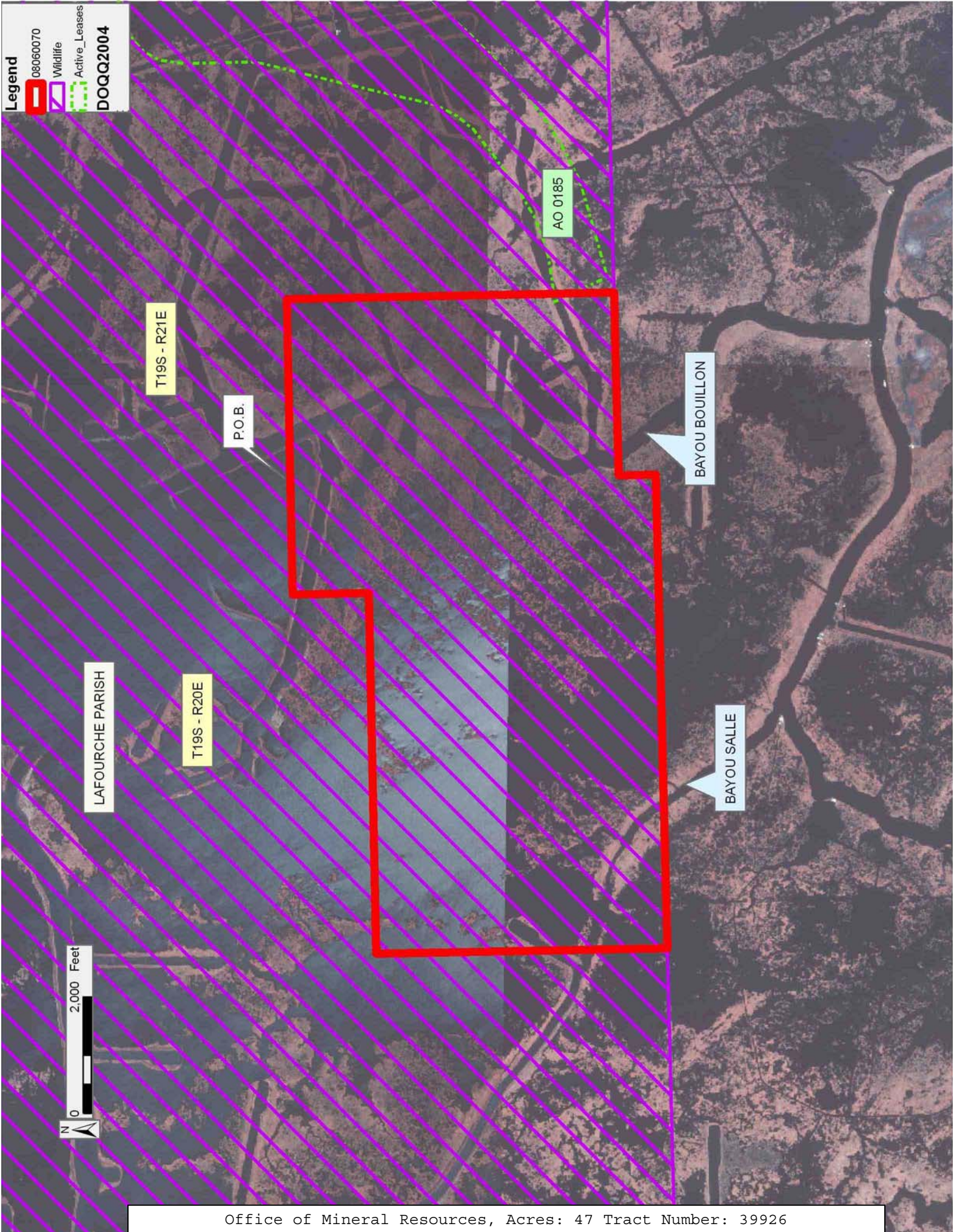
Legend

08060070

Wildlife

Active Leases

DOQQ2004



TRACT 39927 - Lafourche and Terrebonne Parishes, Louisiana

All of the lands now or formerly constituting the beds and bottoms of all water bodies of every nature and description as to which title is vested in the State of Louisiana located within the geographical boundaries of the Pointe-Aux-Chenes Wildlife Management Area and not presently under mineral lease on June 11, 2008, situated in Lafourche and Terrebonne Parishes, Louisiana, and more particularly described as follows: Beginning at a Point having Coordinates of X = 2,261,605.32 and Y = 284,305.39; thence North 88 degrees 03 minutes 25 seconds East approximately 14,766 feet to a point on the boundary of Pointe Aux Chenes State Wildlife Management Area; thence Southerly, Easterly, Southerly, Westerly, Southwesterly, Northerly, Westerly, Northwesterly, Southwesterly, Northwesterly, and Westerly along the said boundary of Pointe Aux Chenes State Wildlife Management Area to a point that intersects a line that bears South 01 degrees 25 minutes 34 seconds East from the point of beginning; thence North 01 degrees 25 minutes 34 seconds West approximately 5,233 feet to the point of beginning (This lease includes only waterbottoms claimed and owned by the state and specifically excludes any land within the Pointe-Aux-Chenes Wildlife Management Area), containing approximately **8 acres**, all as more particularly outlined on a plat on file in the Office of Mineral Resources, Department of Natural Resources. All bearings, distances and coordinates are based on Louisiana Coordinate System of 1927, (South Zone).

NOTE: The above description of the Tract nominated for lease has been provided and corrected, where required, exclusively by the nomination party. Any mineral lease selected from this Tract and awarded by the Louisiana State Mineral Board shall be without warranty of any kind, either express, implied, or statutory, including, but not limited to, the implied warranties of merchantability and fitness for a particular purpose. Should the mineral lease awarded by the Louisiana State Mineral Board be subsequently modified, cancelled or abrogated due to the existence of conflicting leases, operating agreements, private claims or other future obligations or conditions which may affect all or any portion of the leased Tract, it shall not relieve the Lessee of the obligation to pay any bonus due thereon to the Louisiana State Mineral Board, nor shall the Louisiana State Mineral Board be obligated to refund any consideration paid by the Lessor prior to such modification, cancellation, or abrogation, including, but not limited to, bonuses, rentals and royalties.

NOTE: This tract is located within the boundaries of a wildlife management area or refuge and any operations conducted thereon in conjunction with this mineral lease may be subject to rules and regulations promulgated by the Department of Wildlife and Fisheries for the protection of fish, birds and other wildlife including, but not necessarily limited to, the following:

1. No activities will be allowed without written authorization from the Louisiana Department of Wildlife and Fisheries. All projects will be

coordinated and approved by the appropriate WMA Supervisor prior to any activities on the wildlife management area.

2. Proposed projects will be evaluated on a case by case basis. Modifications to proposed projects may be required including, but not limited to, access routes, spoil placement, well sites, flow lines and other appurtenant structures required by the Louisiana Department of Wildlife and Fisheries.

3. Compensatory mitigation will be required to offset unavoidable wetland impacts.

4. Removal of all structures, facilities, and equipment will be required within 120 days of abandonment unless otherwise agreed to by the Department of Wildlife and Fisheries.

5. No activities will be allowed during the hunting season unless approved by the Department.

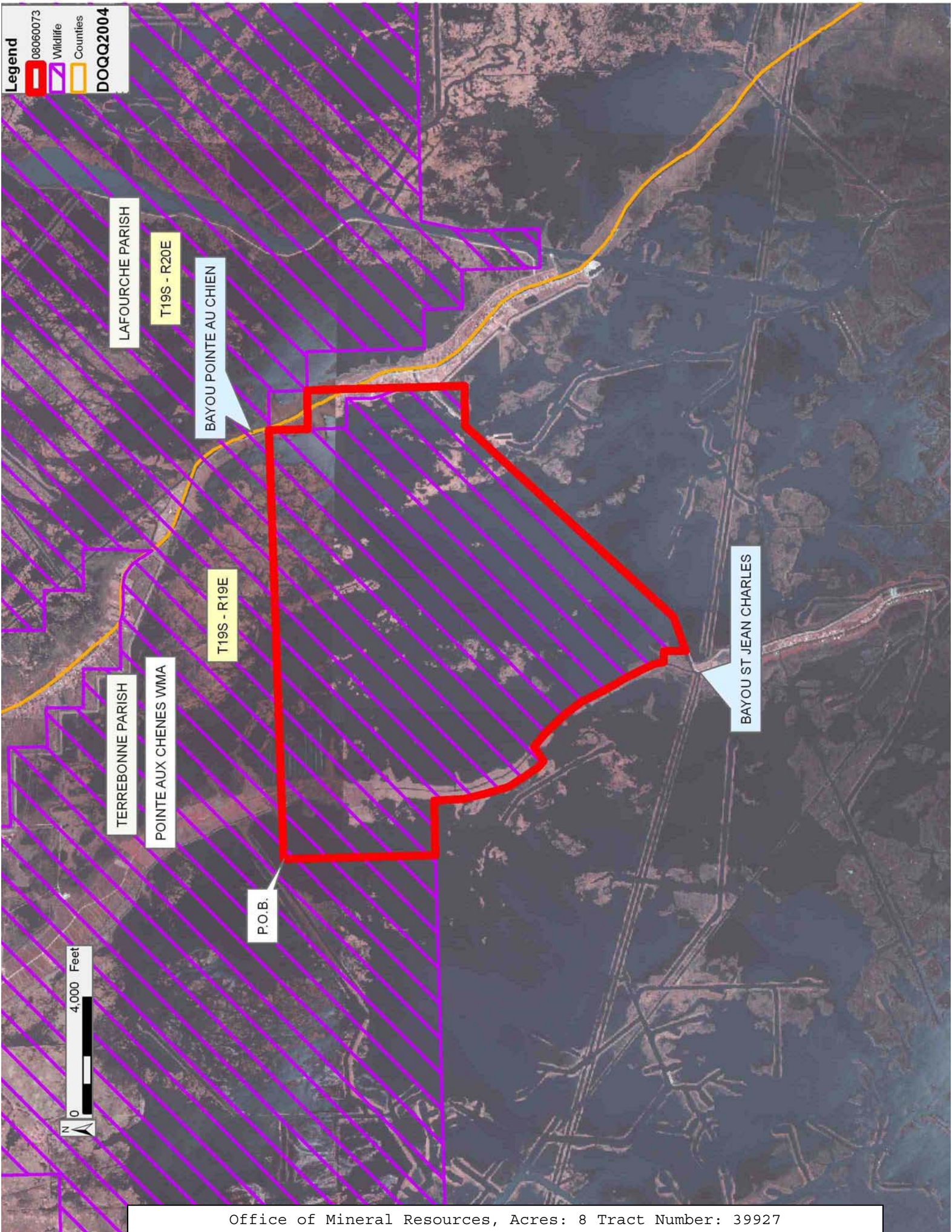
6. Compliance with the said WMA regulations will be required unless otherwise specified by the Department.

7. Prior to submitting applications for wetland permits to Federal and State permitting agencies the lease holder shall coordinate project details with the Louisiana Department of Wildlife and Fisheries, Fur and Refuge Division. Contact person for the Department will be Mike Windham at (504) 568-5886 or (225)765-2807.

NOTE: The State of Louisiana does hereby reserve, and this lease shall be subject to, the imprescriptible right of surface use in the nature of a servitude in favor of the Department of Natural Resources, including its Offices and Commissions, for the sole purpose of implementing, constructing, servicing and maintaining approved coastal zone management and/or restoration projects. Utilization of any and all rights derived under this lease by the mineral lessee, its agents, successors or assigns, shall not interfere with nor hinder the reasonable surface use by the Department of Natural Resources, its Offices or Commissions, as herein above reserved.

Applicant: STARKS OIL CORPORATION

Bidder	Cash Payment	Price/ Acre	Rental	Oil	Gas	Other



Legend

- 08060073
- Wildlife
- Counties
- DOQQ2004

LAFOURCHE PARISH

T19S - R20E

BAYOU POINTE AU CHIEN

T19S - R19E

TERREBONNE PARISH

POINTE AUX CHENES WMA

P.O.B.

BAYOU ST JEAN CHARLES

0 4,000 Feet