

**TRACT 39157 - Portion of Blocks 2, and 7, Eugene Island Area, Revised, Iberia Parish, Louisiana**

All of the lands now or formerly constituting the beds and bottoms of all water bodies of every nature and description the title of which vests in the State of Louisiana, together with all islands arising therein and other lands formed by accretion or by reliction, where allowed by law, excepting tax adjudicated lands, and not presently under mineral lease on June 13, 2007, situated in Iberia Parish, Louisiana, and more particularly described as follows: Beginning at the Northeast corner of Block 2, Eugene Island Area, Revised, having Coordinates of X = 1,864,800.56 and Y = 297,634.00; thence South 13,242.84 feet along the East line of said Block 2 to its Southeast corner, also being the Northeast corner of Block 7, Eugene Island Area, Revised, having Coordinates of X = 1,864,800.56 and Y = 284,391.16; thence South 4,123.61 feet along the East line of said Block 7 to a point on the North boundary of State Lease No. 19153 having Coordinates of X = 1,864,800.56 and Y = 280,267.55; thence West 2,986.10 feet along the North boundary of said State Lease No. 19153 to the Northernmost Southeast corner of State Lease No. 19286 having Coordinates of X = 1,861,814.46 and Y = 280,267.55; thence along the boundary of said State Lease No. 19286 the following courses: North 2,099.45 feet and West 2,789.46 feet to a point on the East boundary of State Lease No. 19299 having Coordinates of X = 1,859,025.00 and Y = 282,367.00; thence North 1,075.20 feet along the East boundary of said State Lease No. 19299 to its Northeast corner, also being a point on the boundary of State Lease No. 19285 having Coordinates of X = 1,859,025.00 and Y = 283,442.20; thence North 51 degrees 28 minutes 35 seconds East 1,523.61 feet along the boundary of said State Lease No. 19285 to its Northeast corner, also being the Southeast corner of State Lease No. 19284 having Coordinates of X = 1,860,217.00 and Y = 284,391.16; thence along the boundary of said State Lease No. 19284 the following courses: North 4,200.84 feet; West 2,591.00 feet and North 2,420.58 feet to its Northernmost Northeast corner having Coordinates of X = 1,857,626.00 and Y = 291,012.58; thence North 6,251.74 feet to a point said to be on the boundary of Marsh Island Wildlife Refuge having Coordinates of X = 1,857,626.00 and Y = 297,264.31; thence Northeasterly along the meanders of said Marsh Island Wildlife Refuge to a point having Coordinates of X = 1,858,308.56 and Y = 297,634.00; thence East 6,492.00 feet along the North line of said Block 2 to the point of beginning, **LESS AND EXCEPT** that portion, if any, of the Marsh Island Wildlife Refuge that may lie within the above described tract, containing approximately **2,328 acres**, all as more particularly outlined on a plat on file in the Office of Mineral Resources, Department of Natural Resources. All bearings, distances and coordinates are based on Louisiana Coordinate System of 1927, (North or South Zone), where applicable.

NOTE: The above description of the Tract nominated for lease has been provided and corrected, where required, exclusively by the nomination party. Any mineral lease selected from this Tract and awarded by the Louisiana State Mineral Board shall be without warranty of any kind, either express, implied, or statutory, including, but not limited to, the

implied warranties of merchantability and fitness for a particular purpose. Should the mineral lease awarded by the Louisiana State Mineral Board be subsequently modified, cancelled or abrogated due to the existence of conflicting leases, operating agreements, private claims or other future obligations or conditions which may affect all or any portion of the leased Tract, it shall not relieve the Lessee of the obligation to pay any bonus due thereon to the Louisiana State Mineral Board, nor shall the Louisiana State Mineral Board be obligated to refund any consideration paid by the Lessor prior to such modification, cancellation, or abrogation, including, but not limited to, bonuses, rentals and royalties.

NOTE: The Office of Mineral Resources will require a minimum bonus of \$300 per acre and a minimum royalty of 25%.

NOTE: The above described tract may be in the vicinity of existing shell reefs where drilling and dredging operations must be conducted in strict conformity with the regulations adopted by the Louisiana Department of Wildlife and Fisheries and/or the U.S. Corps of Engineers, U.S. Army.

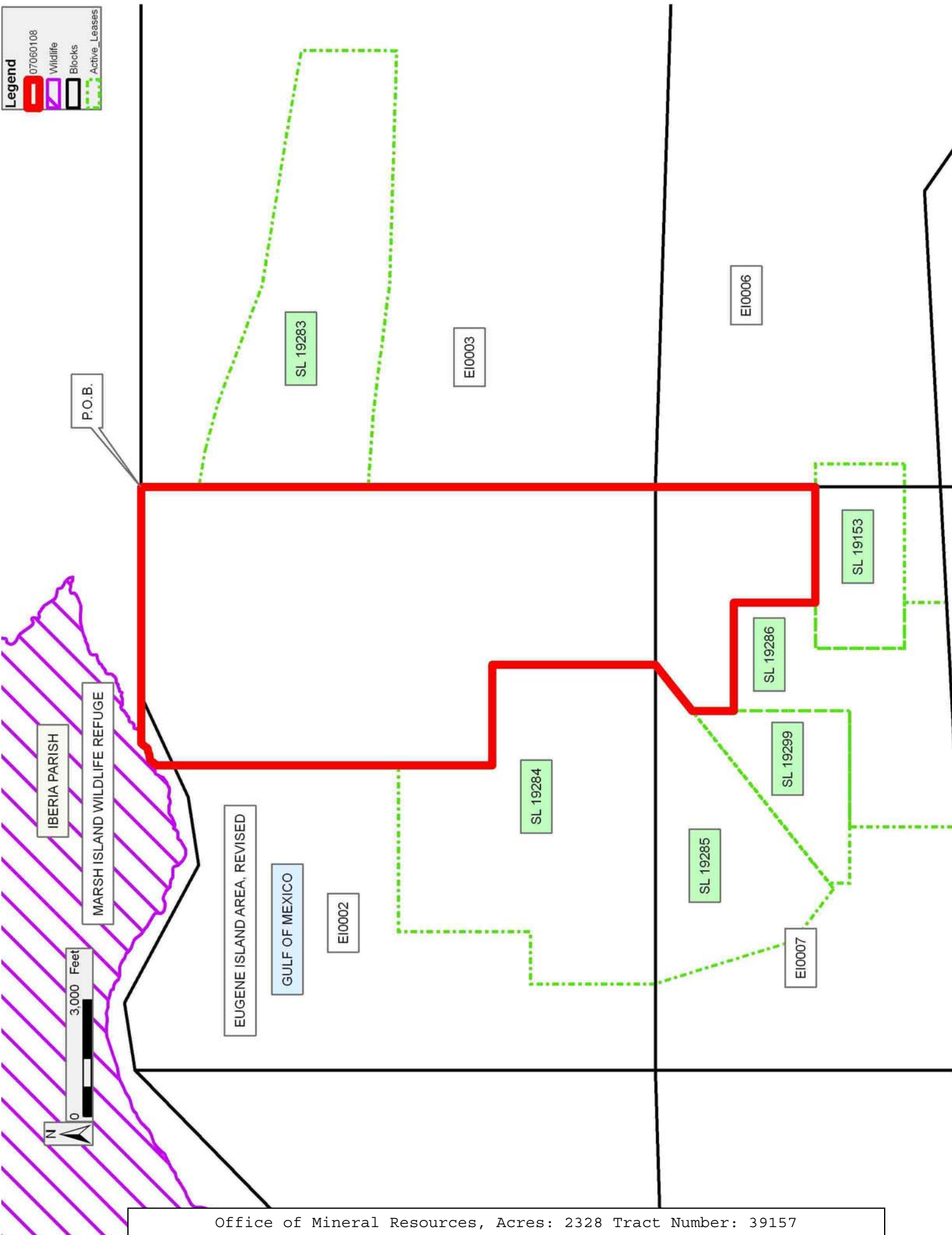
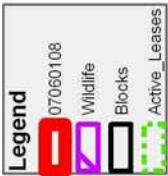
NOTE: The State of Louisiana does hereby reserve, and this lease shall be subject to, the imprescriptible right of surface use in the nature of a servitude in favor of the Department of Natural Resources, including its Offices and Commissions, for the sole purpose of implementing, constructing, servicing and maintaining approved coastal zone management and/or restoration projects. Utilization of any and all rights derived under this lease by the mineral lessee, its agents, successors or assigns, shall not interfere with nor hinder the reasonable surface use by the Department of Natural Resources, its Offices or Commissions, as herein above reserved.

NOTE: The Department of Wildlife and Fisheries has designated certain areas in the coastal waters of the State of Louisiana as Oyster Seed Bed Areas. The exact location of those Seed Bed Areas must be obtained from the Department of Wildlife and Fisheries and any work done under a mineral lease from the State of Louisiana may necessarily be conducted in conformity with the rules and regulations promulgated by the said Department of Wildlife and Fisheries for Oyster Seed Bed Areas.

NOTE: All or a portion of this Tract lies within one nautical mile of the boundary of the Russell Sage or Marsh Island Wildlife Refuge and Game Preserve. Any activities connected with this lease conducted within this Tract which may pose potential environmental impacts to the said Wildlife Refuge and Game Preserve should be coordinated with the Louisiana Department of Wildlife and Fisheries.

Applicant: AUDUBON OIL AND GAS CORPORATION

Bidder	Cash Payment	Price/ Acre	Rental	Oil	Gas	Other



**TRACT 39158 - Portion of Block 3, Eugene Island Area, Revised, Iberia Parish, Louisiana**

All of the lands now or formerly constituting the beds and bottoms of all water bodies of every nature and description the title of which vests in the State of Louisiana, together with all islands arising therein and other lands formed by accretion or by reliction, where allowed by law, excepting tax adjudicated lands, and not presently under mineral lease on June 13, 2007, situated in Iberia Parish, Louisiana, and more particularly described as follows: Beginning at Northwest corner of Block 3, Eugene Island Area, Revised, having Coordinates of X = 1,864,800.56 and Y = 297,634.00; thence East 7,617.44 feet along the North line of said Block 3 to point having Coordinates of X = 1,872,418.00 and Y = 297,634.00; thence South 3,513.13 feet to a point on the North boundary of State Lease No. 19283 having Coordinates of X = 1,872,418.00 and Y = 294,120.87; thence along the boundary of said State Lease No. 19283 the following courses: North 80 degrees 50 minutes 00 seconds West 2,461.44 feet; North 69 degrees 16 minutes 04 seconds West 3,194.89 feet; North 74 degrees 53 minutes 03 seconds West 1,299.98 feet and North 80 degrees 33 minutes 42 seconds West 957.40 feet its Northwest corner, also being a point on the West line of said Block 3 having Coordinates of X = 1,864,800.56 and Y = 296,140.00; thence North 1,494.00 feet along the West line of said Block 3 to the point of beginning, containing approximately **446.88 acres**, all as more particularly outlined on a plat on file in the Office of Mineral Resources, Department of Natural Resources. All bearings, distances and coordinates are based on Louisiana Coordinate System of 1927, (North or South Zone), where applicable.

NOTE: The above description of the Tract nominated for lease has been provided and corrected, where required, exclusively by the nomination party. Any mineral lease selected from this Tract and awarded by the Louisiana State Mineral Board shall be without warranty of any kind, either express, implied, or statutory, including, but not limited to, the implied warranties of merchantability and fitness for a particular purpose. Should the mineral lease awarded by the Louisiana State Mineral Board be subsequently modified, cancelled or abrogated due to the existence of conflicting leases, operating agreements, private claims or other future obligations or conditions which may affect all or any portion of the leased Tract, it shall not relieve the Lessee of the obligation to pay any bonus due thereon to the Louisiana State Mineral Board, nor shall the Louisiana State Mineral Board be obligated to refund any consideration paid by the Lessor prior to such modification, cancellation, or abrogation, including, but not limited to, bonuses, rentals and royalties.

NOTE: The Office of Mineral Resources will require a minimum bonus of \$300 per acre and a minimum royalty of 25%.

NOTE: The above described tract may be in the vicinity of existing shell reefs where drilling and dredging operations must be conducted in strict

conformity with the regulations adopted by the Louisiana Department of Wildlife and Fisheries and/or the U.S. Corps of Engineers, U.S. Army.

NOTE: The State of Louisiana does hereby reserve, and this lease shall be subject to, the imprescriptible right of surface use in the nature of a servitude in favor of the Department of Natural Resources, including its Offices and Commissions, for the sole purpose of implementing, constructing, servicing and maintaining approved coastal zone management and/or restoration projects. Utilization of any and all rights derived under this lease by the mineral lessee, its agents, successors or assigns, shall not interfere with nor hinder the reasonable surface use by the Department of Natural Resources, its Offices or Commissions, as herein above reserved.

NOTE: The Department of Wildlife and Fisheries has designated certain areas in the coastal waters of the State of Louisiana as Oyster Seed Bed Areas. The exact location of those Seed Bed Areas must be obtained from the Department of Wildlife and Fisheries and any work done under a mineral lease from the State of Louisiana may necessarily be conducted in conformity with the rules and regulations promulgated by the said Department of Wildlife and Fisheries for Oyster Seed Bed Areas.

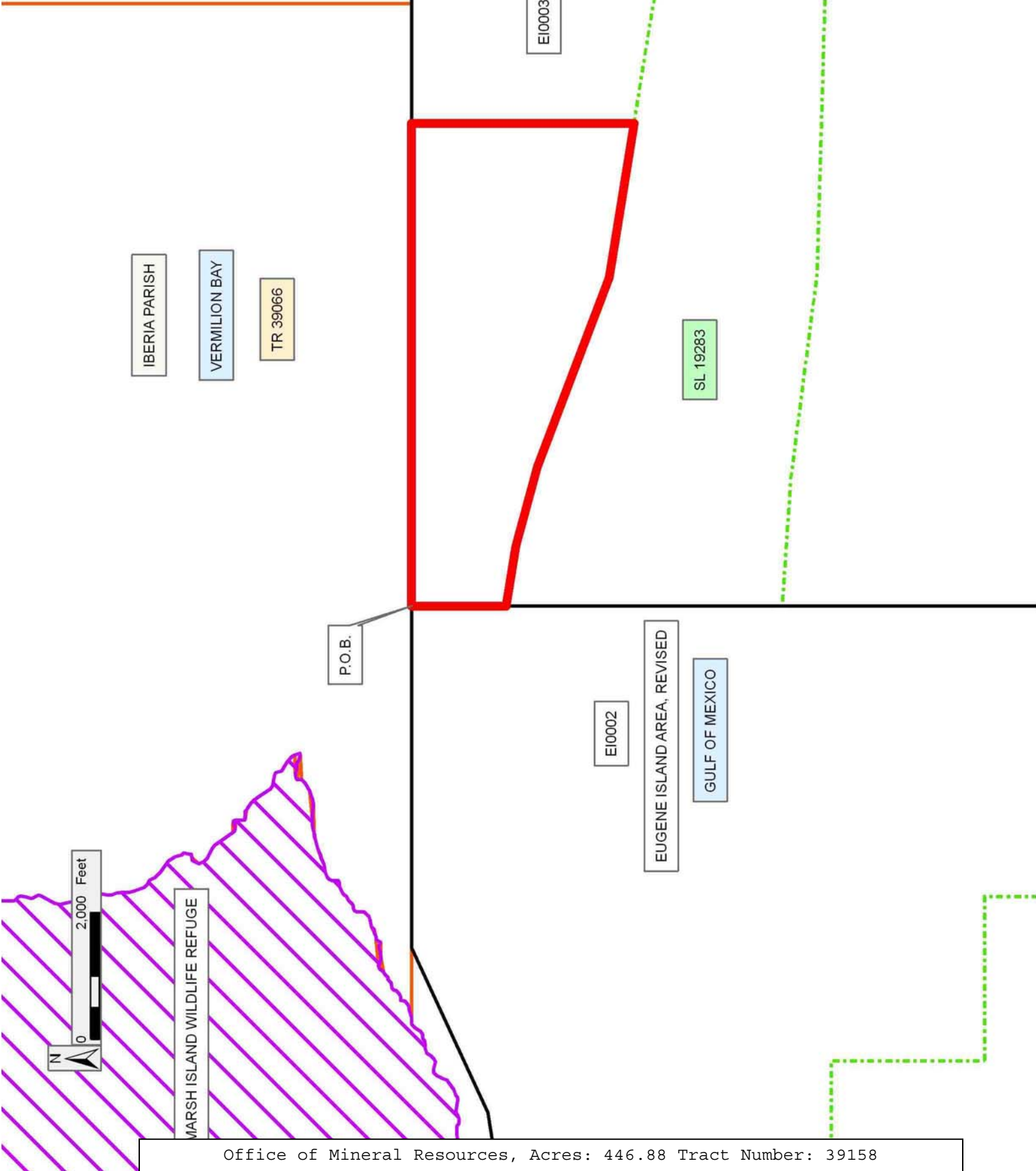
NOTE: All or a portion of this Tract lies within one nautical mile of the boundary of the Russell Sage or Marsh Island Wildlife Refuge and Game Preserve. Any activities connected with this lease conducted within this Tract which may pose potential environmental impacts to the said Wildlife Refuge and Game Preserve should be coordinated with the Louisiana Department of Wildlife and Fisheries.

Applicant: AUDUBON OIL AND GAS CORPORATION

Bidder	Cash Payment	Price/ Acre	Rental	Oil	Gas	Other

**Legend**

- 07060109
- Wildlife
- Blocks
- Tracts
- Active\_Leases



**TRACT 39159 - Portion of Block 3, Eugene Island Area, Revised, Iberia Parish, Louisiana**

All of the lands now or formerly constituting the beds and bottoms of all water bodies of every nature and description the title of which vests in the State of Louisiana, together with all islands arising therein and other lands formed by accretion or by reliction, where allowed by law, excepting tax adjudicated lands, and not presently under mineral lease on June 13, 2007, situated in Iberia Parish, Louisiana, and more particularly described as follows: Beginning at a point on the North line of Block 3, Eugene Island Area, Revised, having Coordinates of X = 1,872,418.00 and Y = 297,634.00; thence East 7,404.72 feet along the North line of said Block 3 to its Northeast corner having Coordinates of X = 1,879,822.72 and Y = 297,634.00; thence South 13,242.84 feet along the East line of said Block 3 to its Southeast corner having Coordinates of X = 1,879,822.72 and Y = 284,391.16; thence West 7,404.72 feet along the South line of said Block 3 to a point having Coordinates of X = 1,872,418.00 and Y = 284,391.16; thence North 6,776.55 feet to a point on the South boundary of State Lease No. 19283 having Coordinates of X = 1,872,418.00 and Y = 291,167.71; thence along the boundary of said State Lease No. 19283 the following courses: South 88 degrees 22 minutes 10 seconds East 3,609.46 feet; North 00 degrees 11 minutes 18 seconds East 2,433.01 feet; North 79 degrees 42 minutes 48 seconds West 1,987.95 feet and North 80 degrees 50 minutes 00 seconds West 1,681.47 feet to a point having Coordinates of X = 1,872,418.00 and Y = 294,120.87; thence North 3,513.13 feet to the point of beginning, containing approximately **2,027.04 acres**, all as more particularly outlined on a plat on file in the Office of Mineral Resources, Department of Natural Resources. All bearings, distances and coordinates are based on Louisiana Coordinate System of 1927, (North or South Zone), where applicable.

NOTE: The above description of the Tract nominated for lease has been provided and corrected, where required, exclusively by the nomination party. Any mineral lease selected from this Tract and awarded by the Louisiana State Mineral Board shall be without warranty of any kind, either express, implied, or statutory, including, but not limited to, the implied warranties of merchantability and fitness for a particular purpose. Should the mineral lease awarded by the Louisiana State Mineral Board be subsequently modified, cancelled or abrogated due to the existence of conflicting leases, operating agreements, private claims or other future obligations or conditions which may affect all or any portion of the leased Tract, it shall not relieve the Lessee of the obligation to pay any bonus due thereon to the Louisiana State Mineral Board, nor shall the Louisiana State Mineral Board be obligated to refund any consideration paid by the Lessor prior to such modification, cancellation, or abrogation, including, but not limited to, bonuses, rentals and royalties.

NOTE: The Office of Mineral Resources will require a minimum bonus of \$300 per acre and a minimum royalty of 25%.



NOTE: The above described tract may be in the vicinity of existing shell reefs where drilling and dredging operations must be conducted in strict conformity with the regulations adopted by the Louisiana Department of Wildlife and Fisheries and/or the U.S. Corps of Engineers, U.S. Army.

NOTE: The State of Louisiana does hereby reserve, and this lease shall be subject to, the imprescriptible right of surface use in the nature of a servitude in favor of the Department of Natural Resources, including its Offices and Commissions, for the sole purpose of implementing, constructing, servicing and maintaining approved coastal zone management and/or restoration projects. Utilization of any and all rights derived under this lease by the mineral lessee, its agents, successors or assigns, shall not interfere with nor hinder the reasonable surface use by the Department of Natural Resources, its Offices or Commissions, as herein above reserved.

NOTE: The Department of Wildlife and Fisheries has designated certain areas in the coastal waters of the State of Louisiana as Oyster Seed Bed Areas. The exact location of those Seed Bed Areas must be obtained from the Department of Wildlife and Fisheries and any work done under a mineral lease from the State of Louisiana may necessarily be conducted in conformity with the rules and regulations promulgated by the said Department of Wildlife and Fisheries for Oyster Seed Bed Areas.

Applicant: AUDUBON OIL AND GAS CORPORATION

Bidder	Cash Payment	Price/ Acre	Rental	Oil	Gas	Other

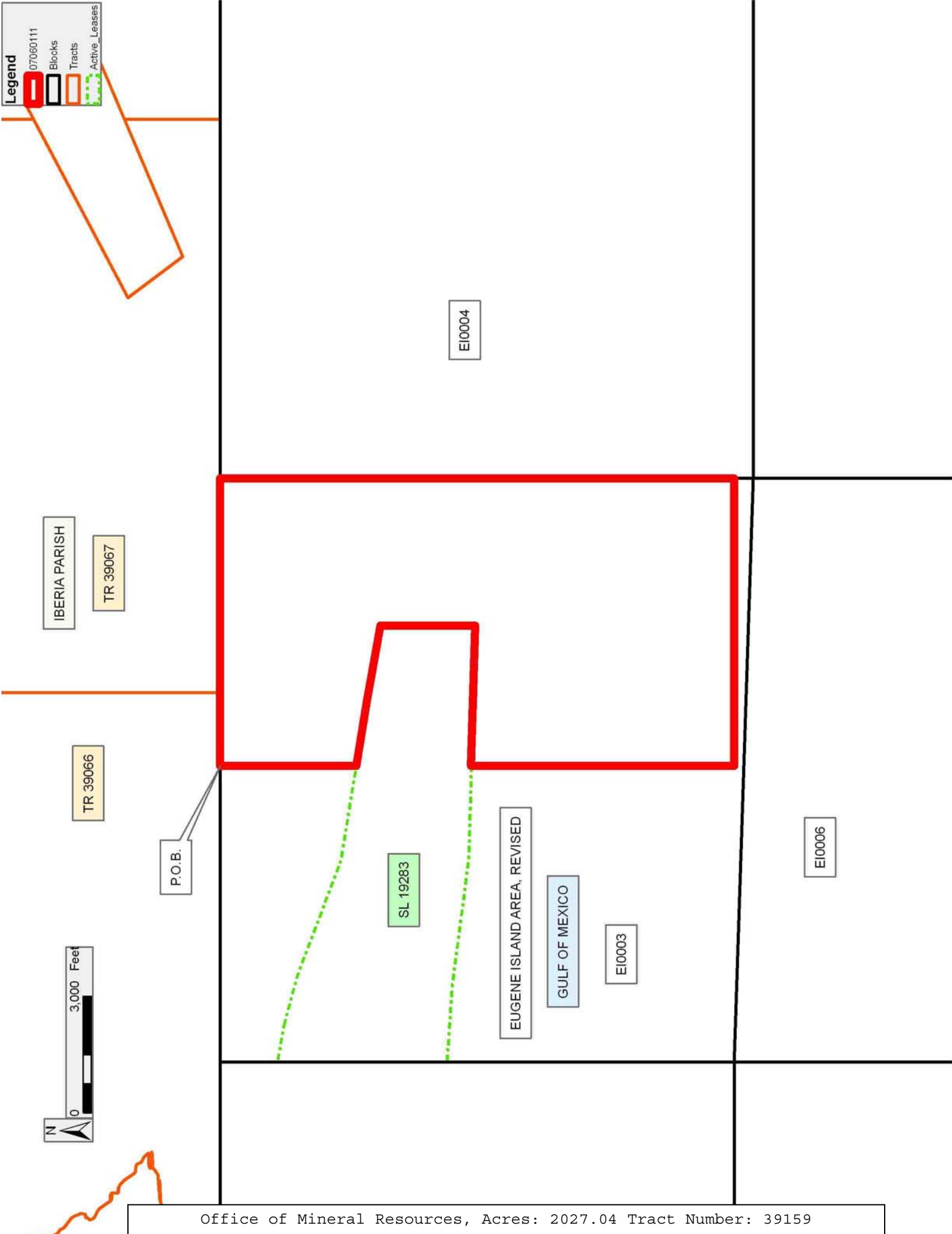
**Legend**

07060111

Blocks

Tracts

Active\_Leases



**TRACT 39160 - Portion of Block 3, Eugene Island Area, Revised, Iberia Parish, Louisiana**

All of the lands now or formerly constituting the beds and bottoms of all water bodies of every nature and description the title of which vests in the State of Louisiana, together with all islands arising therein and other lands formed by accretion or by reliction, where allowed by law, excepting tax adjudicated lands, and not presently under mineral lease on June 13, 2007, situated in Iberia Parish, Louisiana, and more particularly described as follows: Beginning at a point on the West line of Block 3, Eugene Island Area, Revised, also being the Southwest corner of State Lease No. 19283 having Coordinates of X = 1,864,800.56 and Y = 291,788.00; thence along the boundary of said State Lease No. 19283 the following courses: South 86 degrees 01 minutes 38 seconds East 2,006.26 feet; South 82 degrees 41 minutes 04 seconds East 3,243.40 feet and South 88 degrees 22 minutes 10 seconds East 2,399.97 feet to a point having Coordinates of X = 1,872,418.00 and Y = 291,167.71; thence South 6,776.55 feet to a point on the South line of said Block 3 having Coordinates of X = 1,872,418.00 and Y = 284,391.16; thence West 7,617.44 feet along the South line of said Block 3 to its Southwest corner having Coordinates of X = 1,864,800.56 and Y = 284,391.16; thence North 7,396.84 feet along the West line of said Block 6 to the point of beginning, containing approximately **1,232.51 acres**, all as more particularly outlined on a plat on file in the Office of Mineral Resources, Department of Natural Resources. All bearings, distances and coordinates are based on Louisiana Coordinate System of 1927, (North or South Zone), where applicable.

NOTE: The above description of the Tract nominated for lease has been provided and corrected, where required, exclusively by the nomination party. Any mineral lease selected from this Tract and awarded by the Louisiana State Mineral Board shall be without warranty of any kind, either express, implied, or statutory, including, but not limited to, the implied warranties of merchantability and fitness for a particular purpose. Should the mineral lease awarded by the Louisiana State Mineral Board be subsequently modified, cancelled or abrogated due to the existence of conflicting leases, operating agreements, private claims or other future obligations or conditions which may affect all or any portion of the leased Tract, it shall not relieve the Lessee of the obligation to pay any bonus due thereon to the Louisiana State Mineral Board, nor shall the Louisiana State Mineral Board be obligated to refund any consideration paid by the Lessor prior to such modification, cancellation, or abrogation, including, but not limited to, bonuses, rentals and royalties.

NOTE: The Office of Mineral Resources will require a minimum bonus of \$300 per acre and a minimum royalty of 25%.

NOTE: The above described tract may be in the vicinity of existing shell reefs where drilling and dredging operations must be conducted in strict conformity with the regulations adopted by the Louisiana Department of Wildlife and Fisheries and/or the U.S. Corps of Engineers, U.S. Army.

NOTE: The State of Louisiana does hereby reserve, and this lease shall be subject to, the imprescriptible right of surface use in the nature of a servitude in favor of the Department of Natural Resources, including its Offices and Commissions, for the sole purpose of implementing, constructing, servicing and maintaining approved coastal zone management and/or restoration projects. Utilization of any and all rights derived under this lease by the mineral lessee, its agents, successors or assigns, shall not interfere with nor hinder the reasonable surface use by the Department of Natural Resources, its Offices or Commissions, as herein above reserved.

NOTE: The Department of Wildlife and Fisheries has designated certain areas in the coastal waters of the State of Louisiana as Oyster Seed Bed Areas. The exact location of those Seed Bed Areas must be obtained from the Department of Wildlife and Fisheries and any work done under a mineral lease from the State of Louisiana may necessarily be conducted in conformity with the rules and regulations promulgated by the said Department of Wildlife and Fisheries for Oyster Seed Bed Areas.

Applicant: AUDUBON OIL AND GAS CORPORATION

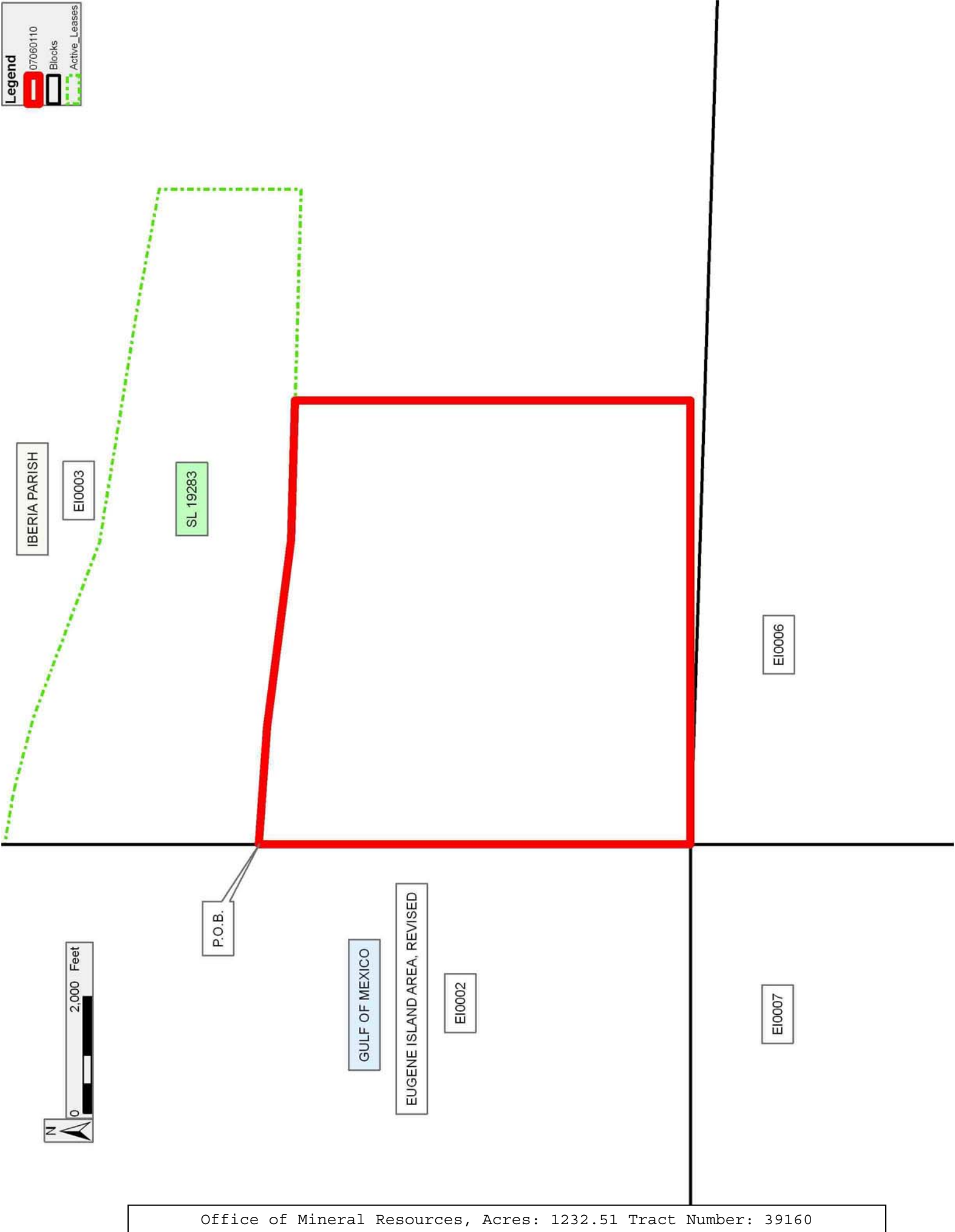
Bidder	Cash Payment	Price/ Acre	Rental	Oil	Gas	Other

**Legend**

07060110

Blocks

Active\_Leases



**TRACT 39161 - Portion of Blocks 1, 2, 7, and 8, Eugene Island Area, Revised, Iberia Parish, Louisiana**

All of the lands now or formerly constituting the beds and bottoms of all water bodies of every nature and description the title of which vests in the State of Louisiana, together with all islands arising therein and other lands formed by accretion or by reliction, where allowed by law, excepting tax adjudicated lands, and not presently under mineral lease on June 13, 2007, situated in Iberia Parish, Louisiana, and more particularly described as follows: Beginning at a point within Block 1, Eugene Island Area, Revised, also being an interior corner of State Lease No. 19149 having Coordinates of X = 1,845,662.71 and Y = 289,070.89; thence along the boundary of said State Lease No. 19149 the following courses: North 89 degrees 53 minutes 29 seconds East 3,885.64 feet; North 23 degrees 27 minutes 53 seconds East 406.19 feet and North 00 degrees 03 minutes 27 seconds West 1,561.65 feet to a point on its Eastern boundary having Coordinates of X = 1,849,708.51 and Y = 291,012.51; thence North 89 degrees 56 minutes 33 seconds East 69.89 feet to a point on the West line of Block 2, Eugene Island Area, Revised, also being the Northwest corner of State Lease No. 19297 having Coordinates of X = 1,849,778.40 and Y = 291,012.58; thence along the boundary of said State Lease No. 19297 the following courses: South 4,471.79 feet and North 41 degrees 33 minutes 40 seconds East 5,377.60 feet to a point on the Western boundary of State Lease No. 19284 having Coordinates of X = 1,853,346.00 and Y = 290,564.57; thence along the boundary of said State Lease No. 19284 the following courses: South 2,958.57 feet; West 1,349.00 feet and South 3,214.84 feet to its Southwest corner and the Northwest corner of State Lease No. 19285, also being a point on the North line of Block 7, Eugene Island Area, Revised, having Coordinates of X = 1,851,997.00 and Y = 284,391.16; thence along the boundary of said State Lease No. 19285 the following courses: South 17 degrees 15 minutes 18 seconds East 3,718.51 feet; South 52 degrees 23 minutes 26 seconds East 1,704.14 feet and North 51 degrees 28 minutes 31 seconds East 185.34 feet to the Northwest corner of State Lease No. 19299 having Coordinates of X = 1,854,595.00 and Y = 279,915.44; thence along the boundary of said State Lease No. 19299 the following courses: South 525.44 feet and East 1,441.00 feet to the Southernmost Northwest corner of State Lease No. 19286 having Coordinates of X = 1,856,036.00 and Y = 279,390.00; thence South 2,805.94 feet along the West boundary of said State Lease No. 19286 to its Southwest corner, also being a point on the Louisiana Coastline, as decreed by the Supreme Court of the United States, as determined by a Special Master appointed therein, in litigation styled *United States v. State of Louisiana et al* No. 9 Original, in 1975, having Coordinates of X = 1,856,036.00 and Y = 276,584.06; thence Southwesterly on a straight line, along said Louisiana Coastline, to a point within Block 8, Eugene Island Area, Revised, also being the Southeast corner of State Lease No. 19288 having Coordinates of X = 1,845,260.24 and Y = 276,007.88; thence North 3,406.96 feet along the East boundary of said State Lease No. 19288 to a point on the boundary of State Lease No. 19289 having Coordinates of X = 1,845,260.24 and Y = 279,414.84; thence along the boundary of said State Lease No. 19289 the

following courses: North 49 degrees 38 minutes 27 seconds East 5,929.36 feet; North 665.82 feet and West 4,499.67 feet to a point on the South line of said Block 1, also being a point on the Eastern boundary of State Lease No. 19150 having Coordinates of X = 1,845,278.73 and Y = 283,920.39; thence along the boundary of said State Lease No. 19150 the following courses: North 18 degrees 08 minutes 14 seconds East 2,508.64 feet; North 00 degrees 00 minutes 57 seconds East 1,810.15 feet and South 89 degrees 42 minutes 50 seconds West 397.45 feet to the Southernmost Southeast corner of said State Lease No. 19149 having Coordinates of X = 1,845,662.71 and Y = 288,112.55; thence North 958.34 feet along the boundary of said State Lease No. 19149 to the point of beginning, containing approximately **2,049.06 acres**, all as more particularly outlined on a plat on file in the Office of Mineral Resources, Department of Natural Resources. All bearings, distances and coordinates are based on Louisiana Coordinate System of 1927, (North or South Zone), where applicable.

NOTE: The above description of the Tract nominated for lease has been provided and corrected, where required, exclusively by the nomination party. Any mineral lease selected from this Tract and awarded by the Louisiana State Mineral Board shall be without warranty of any kind, either express, implied, or statutory, including, but not limited to, the implied warranties of merchantability and fitness for a particular purpose. Should the mineral lease awarded by the Louisiana State Mineral Board be subsequently modified, cancelled or abrogated due to the existence of conflicting leases, operating agreements, private claims or other future obligations or conditions which may affect all or any portion of the leased Tract, it shall not relieve the Lessee of the obligation to pay any bonus due thereon to the Louisiana State Mineral Board, nor shall the Louisiana State Mineral Board be obligated to refund any consideration paid by the Lessor prior to such modification, cancellation, or abrogation, including, but not limited to, bonuses, rentals and royalties.

NOTE: The Office of Mineral Resources will require a minimum bonus of \$300 per acre and a minimum royalty of 25%.

NOTE: The State of Louisiana does hereby reserve, and this lease shall be subject to, the imprescriptible right of surface use in the nature of a servitude in favor of the Department of Natural Resources, including its Offices and Commissions, for the sole purpose of implementing, constructing, servicing and maintaining approved coastal zone management and/or restoration projects. Utilization of any and all rights derived under this lease by the mineral lessee, its agents, successors or assigns, shall not interfere with nor hinder the reasonable surface use by the Department of Natural Resources, its Offices or Commissions, as herein above reserved.

NOTE: The Department of Wildlife and Fisheries has designated certain areas in the coastal waters of the State of Louisiana as Oyster Seed Bed

Areas. The exact location of those Seed Bed Areas must be obtained from the Department of Wildlife and Fisheries and any work done under a mineral lease from the State of Louisiana may necessarily be conducted in conformity with the rules and regulations promulgated by the said Department of Wildlife and Fisheries for Oyster Seed Bed Areas.

NOTE: All or a portion of this Tract lies within one nautical mile of the boundary of the Russell Sage or Marsh Island Wildlife Refuge and Game Preserve. Any activities connected with this lease conducted within this Tract which may pose potential environmental impacts to the said Wildlife Refuge and Game Preserve should be coordinated with the Louisiana Department of Wildlife and Fisheries.

Applicant: AUDUBON OIL AND GAS CORPORATION

Bidder	Cash Payment	Price/ Acre	Rental	Oil	Gas	Other

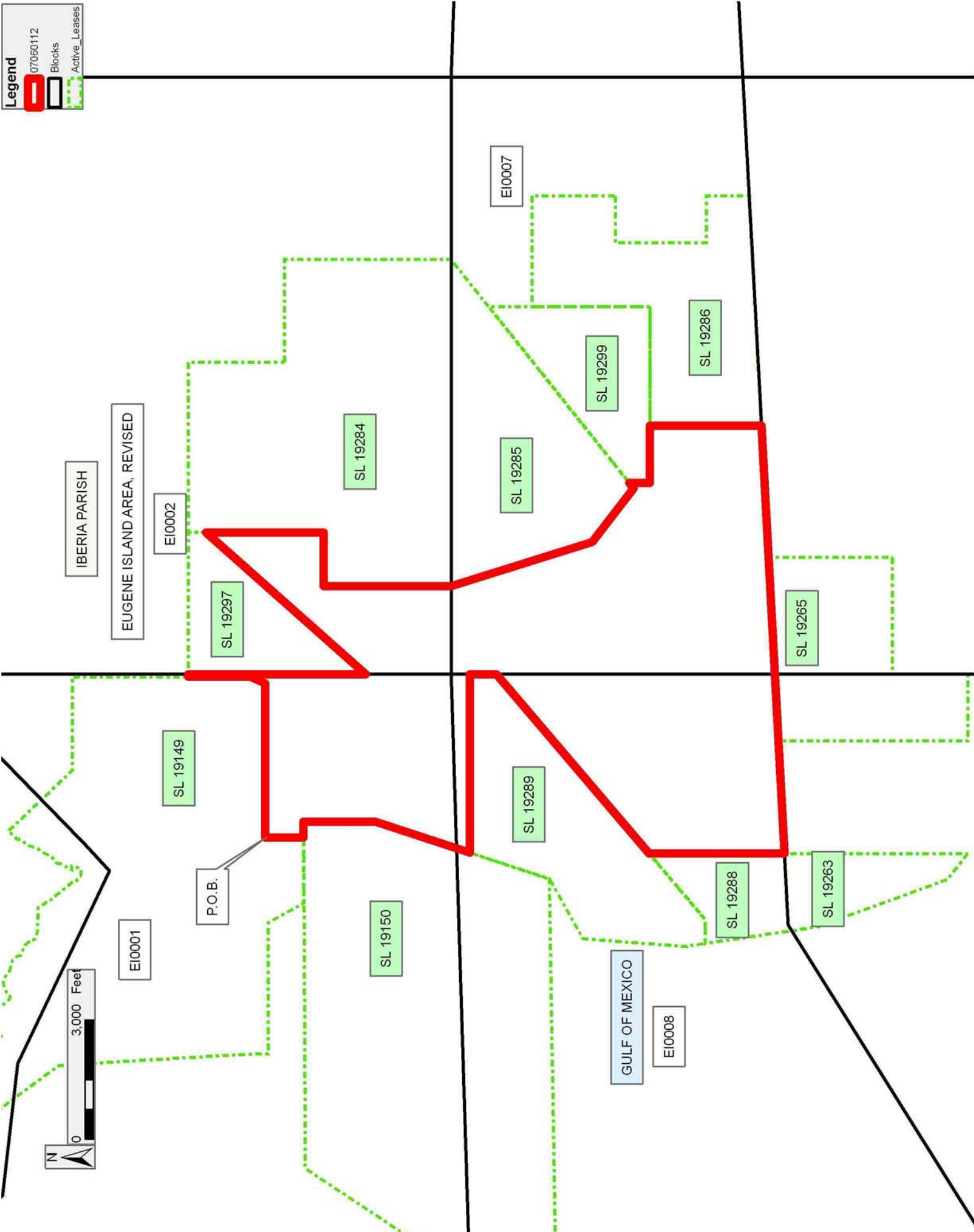


**Legend**

07060112

Blocks

Active\_Leases



**TRACT 39162 - Portion of Block 46, Main Pass Area, Revised, Plaquemines Parish, Louisiana**

All of the lands now or formerly constituting the beds and bottoms of all water bodies of every nature and description the title of which vests in the State of Louisiana, together with all islands arising therein and other lands formed by accretion or by reliction, where allowed by law, excepting tax adjudicated lands, and not presently under mineral lease on June 13, 2007, situated in Plaquemines Parish, Louisiana, and more particularly described as follows: Beginning at the Northwest corner of Block 46, Main Pass Area, Revised, having Coordinates of X = 2,664,850.00 and Y = 278,080.00; thence East 7,375.13 feet along the North line of said Block 46, to the Northwest corner of the Northeastern portion of State Lease No. 2726, as amended, having Coordinates of X = 2,672,225.13 and Y = 278,080.00; thence along the boundary of the Northeastern portion of said State Lease No. 2726 the following courses: South 4,399.93 feet to a point having Coordinates of X = 2,672,225.13 and Y = 273,680.07; South 80 degrees 00 minutes 00 seconds East 1,500.00 feet to a point having Coordinates of X = 2,673,702.34 and Y = 273,419.60; South 85 degrees 30 minutes 00 seconds East 2,000.00 feet to a point having Coordinates of X = 2,675,696.17 and Y = 273,262.68; South 88 degrees 30 minutes 00 seconds East 1,500.00 feet to a point having Coordinates of X = 2,677,195.66 and Y = 273,223.42; North 87 degrees 30 minutes 00 seconds East 600.00 feet to a point having Coordinates of X = 2,677,795.09 and Y = 273,249.59; North 76 degrees 21 minutes 00 seconds East 1,188.60 feet to a point having Coordinates of X = 2,678,950.11 and Y = 273,530.09; North 38 degrees 27 minutes 00 seconds West 1,627.30 feet to a point having Coordinates of X = 2,677,938.21 and Y = 274,804.51; North 42 degrees 00 minutes 00 seconds West 1,500.00 feet to a point having Coordinates of X = 2,676,934.51 and Y = 275,919.22; North 52 degrees 00 minutes 00 seconds West 1,000.00 feet to a point having Coordinates of X = 2,676,146.50 and Y = 276,534.89 and North 59 degrees 00 minutes 00 seconds West 3,000.00 feet to its Northeast corner, also being a point on the North line of said Block 46 having Coordinates of X = 2,673,575.00 and Y = 278,080.00; thence East 2,975.00 feet along the North line of said Block 46 to the Northwest corner of State Lease No. 17052, as amended, having Coordinates of X = 2,676,550.00 and Y = 278,080.00; thence along the boundary of said State Lease No. 17052 the following courses: South 1,400.00 feet to a point having X = 2,676,550.00 and Y = 276,680.00; South 42 degrees 13 minutes 15 seconds East 1,277.41 feet to a point having Coordinates of X = 2,677,408.41 and Y = 275,734.00 and East 2,191.59 feet to its Southeast corner, also being a point on the East line of said Block 46 having Coordinates of X = 2,679,600.00 and Y = 275,734.00; thence South 2,854.00 feet along the East line of said Block 46 to the Northeast corner of State Lease No. 19083 having Coordinates of X = 2,679,600.00 and Y = 272,880.00; thence along the boundary of said State Lease No. 19083 the following courses: West 7,375.00 feet to a point having Coordinates of X = 2,672,225.00 and Y = 272,880.00; South 2,020.45 feet to a point having Coordinates of X = 2,672,225.00 and Y = 270,859.55; North 52 degrees 35 minutes 09 seconds West 1,549.86 feet to a point having Coordinates of X = 2,670,994.00 and Y

= 271,801.20; South 04 degrees 52 minutes 09 seconds West 4,343.66 feet to its Southernmost Southwest corner, also being the Westernmost Southwest corner of the Southern portion of said State Lease No. 2726 having Coordinates of X = 2,670,625.30 and Y = 267,473.22; thence along the boundary of the Southern portion of said State Lease No. 2726 the following courses: North 81 degrees 58 minutes 03 seconds East 788.00 feet to a point having Coordinates of X = 2,671,405.57 and Y = 267,583.33; South 89 degrees 59 minutes 57 seconds East 370.00 feet to a point having Coordinates of X = 2,671,775.57 and Y = 267,583.32; South 81 degrees 01 minutes 57 seconds East 385.00 feet to a point having Coordinates of X = 2,672,155.86 and Y = 267,523.31; South 63 degrees 25 minutes 58 seconds East 380.00 feet to a point having Coordinates of X = 2,672,495.74 and Y = 267,353.36; South 46 degrees 11 minutes 00 seconds East 513.01 feet to a point having Coordinates of X = 2,672,865.90 and Y = 266,998.17 and South 37 degrees 56 minutes 59 seconds East 589.01 feet to the Northernmost Northeast corner of State Lease No. 16663, as amended, having Coordinates of X = 2,673,228.13 and Y = 266,533.70; thence South 74 degrees 56 minutes 32 seconds West 1,038.80 feet along the North boundary of said State Lease No. 16663 to its Northwest corner, also being the Northeast corner of State Lease No. 16662, as amended, having Coordinates of X = 2,672,225.00 and Y = 266,263.83; thence South 74 degrees 56 minutes 32 seconds West 2,398.51 feet along the North boundary of said State Lease No. 16662 to the Easternmost Southeast corner of State Lease No. 19082 having Coordinates of X = 2,669,908.85 and Y = 265,640.72; thence along the boundary of said State Lease No. 19082 the following courses: North 04 degrees 49 minutes 45 seconds West 1,292.97 feet to a point having Coordinates of X = 2,669,800.00 and Y = 266,929.10; North 46 degrees 52 minutes 13 seconds West 2,136.18 feet to a point having Coordinates of X = 2,668,241.00 and Y = 268,389.50; South 64 degrees 00 minutes 33 seconds West 2,126.84 feet to a point having Coordinates of X = 2,666,329.26 and Y = 267,457.47; South 19 degrees 10 minutes 26 seconds East 1,734.70 feet to a point having Coordinates of X = 2,666,899.00 and Y = 265,819.00; South 02 degrees 41 minutes 49 seconds West 2,167.70 feet to a point having Coordinates of X = 2,666,797.00 and Y = 263,653.70 and North 75 degrees 34 minutes 59 seconds East 1,892.04 feet to its Southernmost Southeast corner, also being a point on the West boundary of State Lease No. 16661, as amended, having Coordinates of X = 2,668,629.46 and Y = 264,124.77; thence South 15 degrees 03 minutes 29 seconds East 823.03 feet along the West boundary of said State Lease No. 16661 to its Southwest corner, also being a point on the South line of said Block 46 having Coordinates of X = 2,668,843.28 and Y = 263,330.00; thence West 3,993.28 feet along the South line of said Block 46 to its Southwest corner having Coordinates of X = 2,664,850.00 and Y = 263,330.00; thence North 14,750.00 feet along the West line of said Block 46 to the point of beginning, **LESS AND EXCEPT** all of the Northwestern portion of State Lease No. 2726, as amended, that lies within the above described tract, being more fully described as follows: Commencing at the point of beginning of the above described nominated tract having Coordinates of X = 2,664,850.00 and Y = 278,080.00; thence South 67 degrees 40 minutes 50 seconds East 4,107.75 feet to the Northwest

corner of the Northwestern portion of said State Lease No. 2726 having Coordinates of X = 2,668,650.00 and Y = 276,520.00; thence along the boundary of the Northwestern portion of said State Lease No. 2726 the following courses: East 2,640.00 feet to its Northeast corner having Coordinates of X = 2,671,290.00 and Y = 276,520.00; South 2,640.00 feet to its Southeast corner having Coordinates of X = 2,671,290.00 and Y = 273,880.00; West 2,640.00 feet to its Southwest corner having Coordinates of X = 2,668,650.00 and Y = 273,880.00 and North 2,640.00 feet to the point of beginning, the nominated tract containing approximately **2,020.78 acres**, all as more particularly outlined on a plat on file in the Office of Mineral Resources, Department of Natural Resources. All bearings, distances and coordinates are based on Louisiana Coordinate System of 1927, (North or South Zone), where applicable.

NOTE: The above description of the Tract nominated for lease has been provided and corrected, where required, exclusively by the nomination party. Any mineral lease selected from this Tract and awarded by the Louisiana State Mineral Board shall be without warranty of any kind, either express, implied, or statutory, including, but not limited to, the implied warranties of merchantability and fitness for a particular purpose. Should the mineral lease awarded by the Louisiana State Mineral Board be subsequently modified, cancelled or abrogated due to the existence of conflicting leases, operating agreements, private claims or other future obligations or conditions which may affect all or any portion of the leased Tract, it shall not relieve the Lessee of the obligation to pay any bonus due thereon to the Louisiana State Mineral Board, nor shall the Louisiana State Mineral Board be obligated to refund any consideration paid by the Lessor prior to such modification, cancellation, or abrogation, including, but not limited to, bonuses, rentals and royalties.

NOTE: The State of Louisiana does hereby reserve, and this lease shall be subject to, the imprescriptible right of surface use in the nature of a servitude in favor of the Department of Natural Resources, including its Offices and Commissions, for the sole purpose of implementing, constructing, servicing and maintaining approved coastal zone management and/or restoration projects. Utilization of any and all rights derived under this lease by the mineral lessee, its agents, successors or assigns, shall not interfere with nor hinder the reasonable surface use by the Department of Natural Resources, its Offices or Commissions, as herein above reserved.

Applicant: CLARK EXPLORATION COMPANY

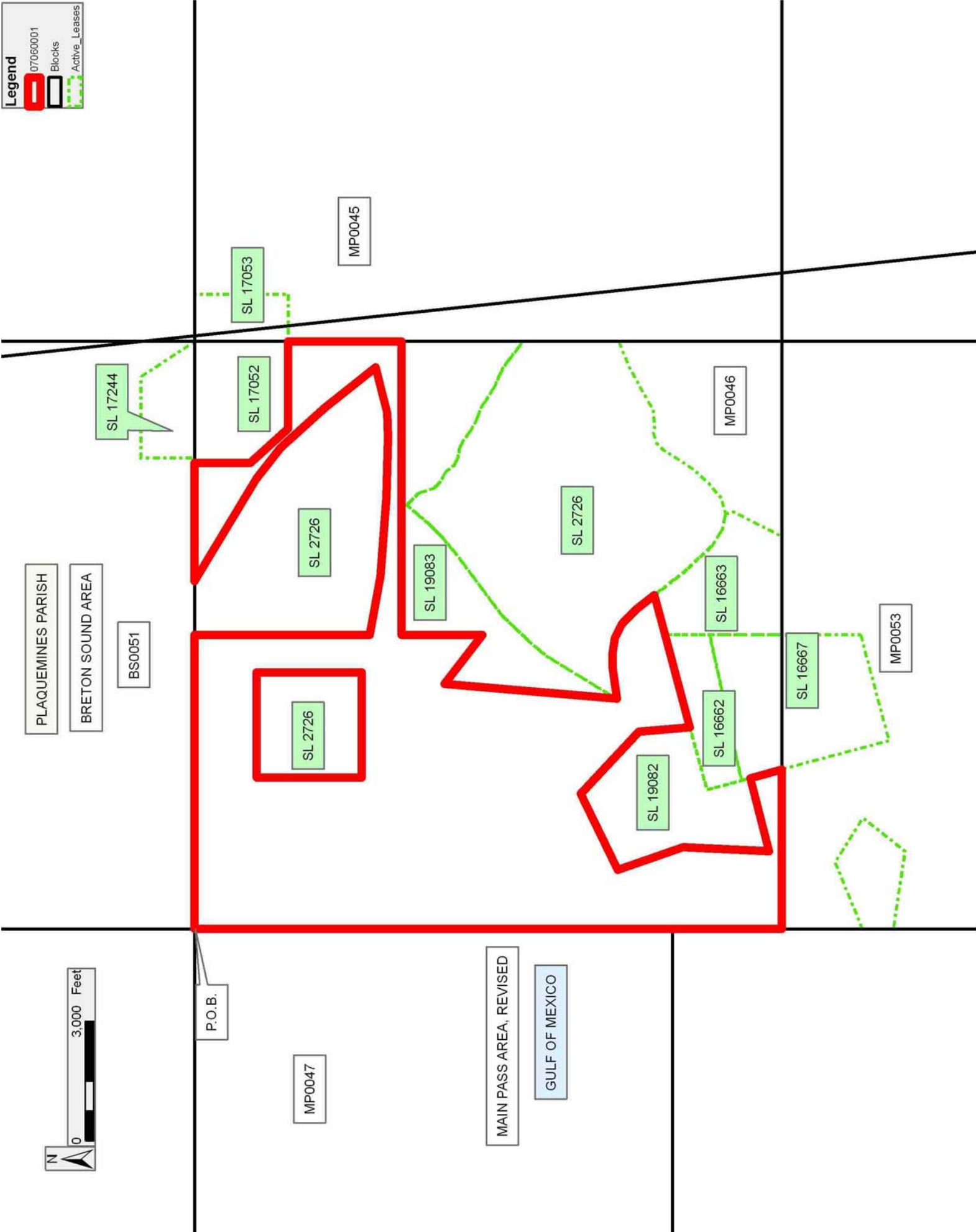
Bidder	Cash Payment	Price/ Acre	Rental	Oil	Gas	Other

**Legend**

07060001

Blocks

Active\_Leases



**TRACT 39163 - Portion of Blocks 1, and 8, Eugene Island Area, Revised, Iberia Parish, Louisiana**

All of the lands now or formerly constituting the beds and bottoms of all water bodies of every nature and description the title of which vests in the State of Louisiana, together with all islands arising therein and other lands formed by accretion or by reliction, where allowed by law, excepting tax adjudicated lands, and not presently under mineral lease on June 13, 2007, situated in Iberia Parish, Louisiana, and more particularly described as follows: Beginning at a point within Block 1, Eugene Island Area, Revised, also being the Southwest corner State Lease No. 19148 having Coordinates of X = 1,834,595.99 and Y = 289,005.00; thence East 5,630.01 feet along the South boundary of said State Lease No. 19148 to its Southeast corner also being the Southwest corner of State Lease No. 19149 having Coordinates of X = 1,840,226.00 and Y = 289,005.00; thence along the boundary of said State Lease No. 19149 the following courses: East 3,285.09 feet and South 28 degrees 55 minutes 58 seconds East 1,029.16 feet to a point on the North boundary of State Lease No. 19150 having Coordinates of X = 1,844,008.98 and Y = 288,104.29; thence along the boundary of said State Lease No. 19150 the following courses: South 89 degrees 42 minutes 50 seconds West 6,664.96 feet and South 33 degrees 36 minutes 05 seconds West 5,086.04 feet to a point having Coordinates of X = 1,834,529.44 and Y = 283,834.80; thence North 00 degrees 44 minutes 15 seconds East 5,170.63 feet to the point of beginning, **LESS AND EXCEPT** that portion, if any, of State Lease No. 340, as amended, that may lie within the above described tract, containing approximately **328.48 acres**, all as more particularly outlined on a plat on file in the Office of Mineral Resources, Department of Natural Resources. All bearings, distances and coordinates are based on Louisiana Coordinate System of 1927, (North or South Zone), where applicable.

NOTE: The above description of the Tract nominated for lease has been provided and corrected, where required, exclusively by the nomination party. Any mineral lease selected from this Tract and awarded by the Louisiana State Mineral Board shall be without warranty of any kind, either express, implied, or statutory, including, but not limited to, the implied warranties of merchantability and fitness for a particular purpose. Should the mineral lease awarded by the Louisiana State Mineral Board be subsequently modified, cancelled or abrogated due to the existence of conflicting leases, operating agreements, private claims or other future obligations or conditions which may affect all or any portion of the leased Tract, it shall not relieve the Lessee of the obligation to pay any bonus due thereon to the Louisiana State Mineral Board, nor shall the Louisiana State Mineral Board be obligated to refund any consideration paid by the Lessor prior to such modification, cancellation, or abrogation, including, but not limited to, bonuses, rentals and royalties.

NOTE: The Office of Mineral Resources will require a minimum bonus of \$300 per acre and a minimum royalty of 25%.

NOTE: The State of Louisiana does hereby reserve, and this lease shall be subject to, the imprescriptible right of surface use in the nature of a servitude in favor of the Department of Natural Resources, including its Offices and Commissions, for the sole purpose of implementing, constructing, servicing and maintaining approved coastal zone management and/or restoration projects. Utilization of any and all rights derived under this lease by the mineral lessee, its agents, successors or assigns, shall not interfere with nor hinder the reasonable surface use by the Department of Natural Resources, its Offices or Commissions, as herein above reserved.

NOTE: The Department of Wildlife and Fisheries has designated certain areas in the coastal waters of the State of Louisiana as Oyster Seed Bed Areas. The exact location of those Seed Bed Areas must be obtained from the Department of Wildlife and Fisheries and any work done under a mineral lease from the State of Louisiana may necessarily be conducted in conformity with the rules and regulations promulgated by the said Department of Wildlife and Fisheries for Oyster Seed Bed Areas.

NOTE: All or a portion of this Tract lies within one nautical mile of the boundary of the Russell Sage or Marsh Island Wildlife Refuge and Game Preserve. Any activities connected with this lease conducted within this Tract which may pose potential environmental impacts to the said Wildlife Refuge and Game Preserve should be coordinated with the Louisiana Department of Wildlife and Fisheries.

Applicant: AUDUBON OIL AND GAS CORPORATION

Bidder	Cash Payment	Price/ Acre	Rental	Oil	Gas	Other



**Legend**

07060105

Blocks

Active\_Leases



**TRACT 39164 - Terrebonne Parish, Louisiana**

All of the lands now or formerly constituting the beds and bottoms of all water bodies of every nature and description the title of which vests in the State of Louisiana, together with all islands arising therein and other lands formed by accretion or by reliction, where allowed by law, excepting tax adjudicated lands, and not presently under mineral lease on June 13, 2007, situated in Terrebonne Parish, Louisiana, and more particularly described as follows: Beginning at a point having Coordinates of X = 2,196,608.00 and Y = 283,394.00; thence South 81 degrees 29 minutes 42 seconds East 8,431.72 feet to a point having Coordinates of X = 2,204,947.00 and Y = 282,147.00; thence South 07 degrees 48 minutes 41 seconds East 5,815.66 feet to a point having Coordinates of X = 2,205,737.43 and Y = 276,385.30; thence North 81 degrees 29 minutes 42 seconds West 8,431.72 feet to a point having Coordinates of X = 2,197,398.43 and Y = 277,632.30; thence North 07 degrees 48 minutes 41 seconds West 5,815.66 feet to the point of beginning, containing approximately **23 acres**, all as more particularly outlined on a plat on file in the Office of Mineral Resources, Department of Natural Resources. All bearings, distances and coordinates are based on Louisiana Coordinate System of 1927, (North or South Zone), where applicable.

NOTE: The above description of the Tract nominated for lease has been provided and corrected, where required, exclusively by the nomination party. Any mineral lease selected from this Tract and awarded by the Louisiana State Mineral Board shall be without warranty of any kind, either express, implied, or statutory, including, but not limited to, the implied warranties of merchantability and fitness for a particular purpose. Should the mineral lease awarded by the Louisiana State Mineral Board be subsequently modified, cancelled or abrogated due to the existence of conflicting leases, operating agreements, private claims or other future obligations or conditions which may affect all or any portion of the leased Tract, it shall not relieve the Lessee of the obligation to pay any bonus due thereon to the Louisiana State Mineral Board, nor shall the Louisiana State Mineral Board be obligated to refund any consideration paid by the Lessor prior to such modification, cancellation, or abrogation, including, but not limited to, bonuses, rentals and royalties.

NOTE: The State of Louisiana does hereby reserve, and this lease shall be subject to, the imprescriptible right of surface use in the nature of a servitude in favor of the Department of Natural Resources, including its Offices and Commissions, for the sole purpose of implementing, constructing, servicing and maintaining approved coastal zone management and/or restoration projects. Utilization of any and all rights derived under this lease by the mineral lessee, its agents, successors or assigns, shall not interfere with nor hinder the reasonable surface use by the Department of Natural Resources, its Offices or Commissions, as herein above reserved.

NOTE: The Department of Wildlife and Fisheries has designated certain areas in the coastal waters of the State of Louisiana as Oyster Seed Bed Areas. The exact location of those Seed Bed Areas must be obtained from the Department of Wildlife and Fisheries and any work done under a mineral lease from the State of Louisiana may necessarily be conducted in conformity with the rules and regulations promulgated by the said Department of Wildlife and Fisheries for Oyster Seed Bed Areas.

Applicant: MANTRA LAND SERVICES, LLC

Bidder	Cash Payment	Price/ Acre	Rental	Oil	Gas	Other



T19S - R18E

TERREBONNE PARISH

BAYOU GRAND CAILLOU

P.O.B.

S - R17E



**TRACT 39165 - Portion of Block 6, Eugene Island Area, Revised, Iberia Parish, Louisiana**

All of the lands now or formerly constituting the beds and bottoms of all water bodies of every nature and description the title of which vests in the State of Louisiana, together with all islands arising therein and other lands formed by accretion or by reliction, where allowed by law, excepting tax adjudicated lands, and not presently under mineral lease on June 13, 2007, situated in Iberia Parish, Louisiana, and more particularly described as follows: Beginning at the Northwest corner of Block 6, Eugene Island Area, Revised, having Coordinates of X = 1,864,800.56 and Y = 284,391.16; thence East 7,617.44 feet along the North line of said Block 6 to a point having Coordinates of X = 1,872,418.00 and Y = 284,391.16; thence South 6,931.16 feet to a point on the Louisiana Coastline, as decreed by the Supreme Court of the United States, as determined by a Special Master appointed therein, in litigation styled *United States v. State of Louisiana et al No. 9 Original*, in 1975, having Coordinates of X = 1,872,418.00 and Y = 277,460.00; thence Southwesterly on a straight line, along said Louisiana Coastline, to a point on the West line of said Block 6 having Coordinates of X = 1,864,800.56 and Y = 277,052.70; thence North 923.87 feet along the West line of said Block 6 to a point on the South boundary of State Lease No. 19153 having Coordinates of X = 1,864,800.56 and Y = 277,976.57; thence along the boundary of said State Lease No. 19153 the following courses: East 586.77 feet; North 2,290.98 feet and West 586.77 feet to a point on the West line of said Block 6 having Coordinates of X = 1,864,800.56 and Y = 280,267.55; thence North 4,123.61 feet along the West line of said Block 6 to the point of beginning, containing approximately **1,216.82 acres**, all as more particularly outlined on a plat on file in the Office of Mineral Resources, Department of Natural Resources. All bearings, distances and coordinates are based on Louisiana Coordinate System of 1927, (North or South Zone), where applicable.

NOTE: The above description of the Tract nominated for lease has been provided and corrected, where required, exclusively by the nomination party. Any mineral lease selected from this Tract and awarded by the Louisiana State Mineral Board shall be without warranty of any kind, either express, implied, or statutory, including, but not limited to, the implied warranties of merchantability and fitness for a particular purpose. Should the mineral lease awarded by the Louisiana State Mineral Board be subsequently modified, cancelled or abrogated due to the existence of conflicting leases, operating agreements, private claims or other future obligations or conditions which may affect all or any portion of the leased Tract, it shall not relieve the Lessee of the obligation to pay any bonus due thereon to the Louisiana State Mineral Board, nor shall the Louisiana State Mineral Board be obligated to refund any consideration paid by the Lessor prior to such modification, cancellation, or abrogation, including, but not limited to, bonuses, rentals and royalties.



NOTE: The Office of Mineral Resources will require a minimum bonus of \$300 per acre and a minimum royalty of 25%.

NOTE: The above described tract may be in the vicinity of existing shell reefs where drilling and dredging operations must be conducted in strict conformity with the regulations adopted by the Louisiana Department of Wildlife and Fisheries and/or the U.S. Corps of Engineers, U.S. Army.

NOTE: The State of Louisiana does hereby reserve, and this lease shall be subject to, the imprescriptible right of surface use in the nature of a servitude in favor of the Department of Natural Resources, including its Offices and Commissions, for the sole purpose of implementing, constructing, servicing and maintaining approved coastal zone management and/or restoration projects. Utilization of any and all rights derived under this lease by the mineral lessee, its agents, successors or assigns, shall not interfere with nor hinder the reasonable surface use by the Department of Natural Resources, its Offices or Commissions, as herein above reserved.

NOTE: The Department of Wildlife and Fisheries has designated certain areas in the coastal waters of the State of Louisiana as Oyster Seed Bed Areas. The exact location of those Seed Bed Areas must be obtained from the Department of Wildlife and Fisheries and any work done under a mineral lease from the State of Louisiana may necessarily be conducted in conformity with the rules and regulations promulgated by the said Department of Wildlife and Fisheries for Oyster Seed Bed Areas.

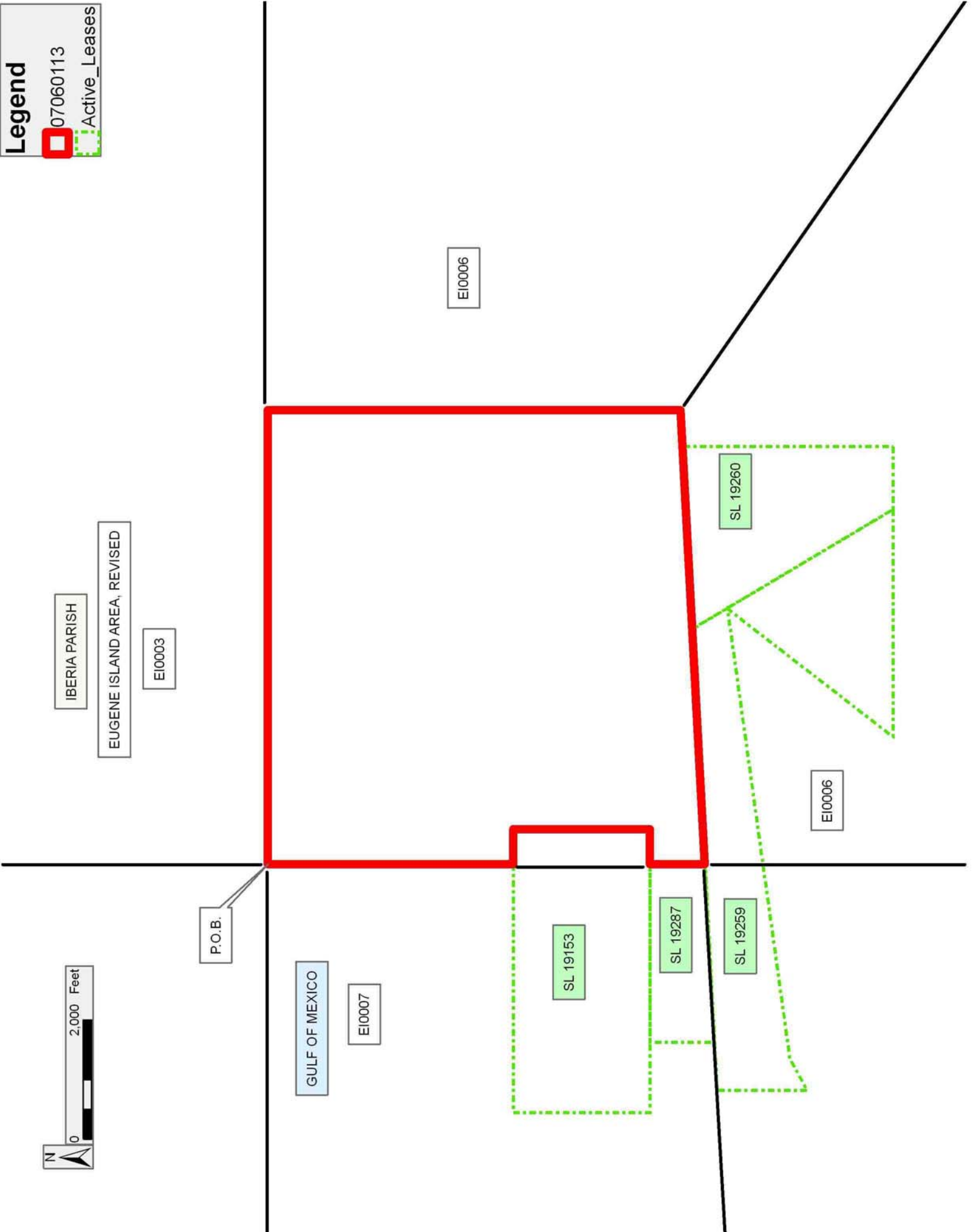
Applicant: AUDUBON OIL AND GAS CORPORATION

Bidder	Cash Payment	Price/ Acre	Rental	Oil	Gas	Other

Legend

07060113

Active\_Leases



**TRACT 39166 - Portion of Block 6, Eugene Island Area, Revised, Iberia Parish, Louisiana**

All of the lands now or formerly constituting the beds and bottoms of all water bodies of every nature and description the title of which vests in the State of Louisiana, together with all islands arising therein and other lands formed by accretion or by reliction, where allowed by law, excepting tax adjudicated lands, and not presently under mineral lease on June 13, 2007, situated in Iberia Parish, Louisiana, and more particularly described as follows: Beginning at a point on the North line of Block 6, Eugene Island Area, Revised, having Coordinates of X = 1,872,418.00 and Y = 284,391.16; thence East 7,404.72 feet along the North line of said Block 6 to its Northeast corner having Coordinates of X = 1,879,822.72 and Y = 284,391.16; thence South 12,075.82 feet along the East line of said Block 6 to a point on the Louisiana Coastline, as decreed by the Supreme Court of the United States, as determined by a Special Master appointed therein, in litigation styled *United States v. State of Louisiana et al No. 9 Original*, in 1975, having Coordinates of X = 1,879,822.72 and Y = 272,315.34; thence Northwesterly on a straight line, along said Louisiana Coastline, to a point within said Block 6 having Coordinates of X = 1,872,418 and Y = 277,460; thence North 6,931.16 feet to the point of beginning, containing approximately **1,615.49 acres**, all as more particularly outlined on a plat on file in the Office of Mineral Resources, Department of Natural Resources. All bearings, distances and coordinates are based on Louisiana Coordinate System of 1927, (North or South Zone), where applicable.

NOTE: The above description of the Tract nominated for lease has been provided and corrected, where required, exclusively by the nomination party. Any mineral lease selected from this Tract and awarded by the Louisiana State Mineral Board shall be without warranty of any kind, either express, implied, or statutory, including, but not limited to, the implied warranties of merchantability and fitness for a particular purpose. Should the mineral lease awarded by the Louisiana State Mineral Board be subsequently modified, cancelled or abrogated due to the existence of conflicting leases, operating agreements, private claims or other future obligations or conditions which may affect all or any portion of the leased Tract, it shall not relieve the Lessee of the obligation to pay any bonus due thereon to the Louisiana State Mineral Board, nor shall the Louisiana State Mineral Board be obligated to refund any consideration paid by the Lessor prior to such modification, cancellation, or abrogation, including, but not limited to, bonuses, rentals and royalties.

NOTE: The Office of Mineral Resources will require a minimum bonus of \$300 per acre and a minimum royalty of 25%.

NOTE: The above described tract may be in the vicinity of existing shell reefs where drilling and dredging operations must be conducted in strict conformity with the regulations adopted by the Louisiana Department of Wildlife and Fisheries and/or the U.S. Corps of Engineers, U.S. Army.



NOTE: The State of Louisiana does hereby reserve, and this lease shall be subject to, the imprescriptible right of surface use in the nature of a servitude in favor of the Department of Natural Resources, including its Offices and Commissions, for the sole purpose of implementing, constructing, servicing and maintaining approved coastal zone management and/or restoration projects. Utilization of any and all rights derived under this lease by the mineral lessee, its agents, successors or assigns, shall not interfere with nor hinder the reasonable surface use by the Department of Natural Resources, its Offices or Commissions, as herein above reserved.

NOTE: The Department of Wildlife and Fisheries has designated certain areas in the coastal waters of the State of Louisiana as Oyster Seed Bed Areas. The exact location of those Seed Bed Areas must be obtained from the Department of Wildlife and Fisheries and any work done under a mineral lease from the State of Louisiana may necessarily be conducted in conformity with the rules and regulations promulgated by the said Department of Wildlife and Fisheries for Oyster Seed Bed Areas.

Applicant: AUDUBON OIL AND GAS CORPORATION

Bidder	Cash Payment	Price/ Acre	Rental	Oil	Gas	Other

