

**TRACT 39107 - Cameron Parish, Louisiana**

All of the lands now or formerly constituting the beds and bottoms of all water bodies of every nature and description the title of which vests in the State of Louisiana, together with all islands arising therein and other lands formed by accretion or by reliction, where allowed by law, excepting tax adjudicated lands, and not presently under mineral lease on June 13, 2007, situated in Cameron Parish, Louisiana, and more particularly described as follows: Beginning at a point having Coordinates of X = 1,541,583.56 and Y = 472,697.38; thence East 2,640.86 feet to a point on the West boundary of State Lease No. 19107 having Coordinates of X = 1,544,224.42 and Y = 472,697.38; thence along the boundary of said State Lease No. 19107 the following courses: South 28 degrees 19 minutes 33 seconds East 3,743.06 feet to a point having Coordinates of X = 1,546,000.44 and Y = 469,402.50 and North 61 degrees 39 minutes 18 seconds East 4,468.29 feet to its Southeast corner, also being the Southwest corner of State Lease No. 19108 having Coordinates of X = 1,549,933.00 and Y = 471,523.95; thence South 12,316.95 feet to a point having Coordinates of X = 1,549,933.00 and Y = 459,207.00; thence West 6,242.76 feet to a point having Coordinates of X = 1,543,690.24 and Y = 459,207.00; thence North 00 degrees 01 minutes 40 seconds East 4,672.63 feet to a point having Coordinates of X = 1,543,692.51 and Y = 463,879.63; thence North 89 degrees 58 minutes 38 seconds West 2,109.12 feet to a point having Coordinates of X = 1,541,583.39 and Y = 463,880.46; thence North 00 degrees 00 minutes 04 seconds East 8,816.92 feet to the point of beginning, containing approximately **2,045 acres**, all as more particularly outlined on a plat on file in the Office of Mineral Resources, Department of Natural Resources. All bearings, distances and coordinates are based on Louisiana Coordinate System of 1927, (North or South Zone), where applicable.

NOTE: The above description of the Tract nominated for lease has been provided and corrected, where required, exclusively by the nomination party. Any mineral lease selected from this Tract and awarded by the Louisiana State Mineral Board shall be without warranty of any kind, either express, implied, or statutory, including, but not limited to, the implied warranties of merchantability and fitness for a particular purpose. Should the mineral lease awarded by the Louisiana State Mineral Board be subsequently modified, cancelled or abrogated due to the existence of conflicting leases, operating agreements, private claims or other future obligations or conditions which may affect all or any portion of the leased Tract, it shall not relieve the Lessee of the obligation to pay any bonus due thereon to the Louisiana State Mineral Board, nor shall the Louisiana State Mineral Board be obligated to refund any consideration paid by the Lessor prior to such modification, cancellation, or abrogation, including, but not limited to, bonuses, rentals and royalties.

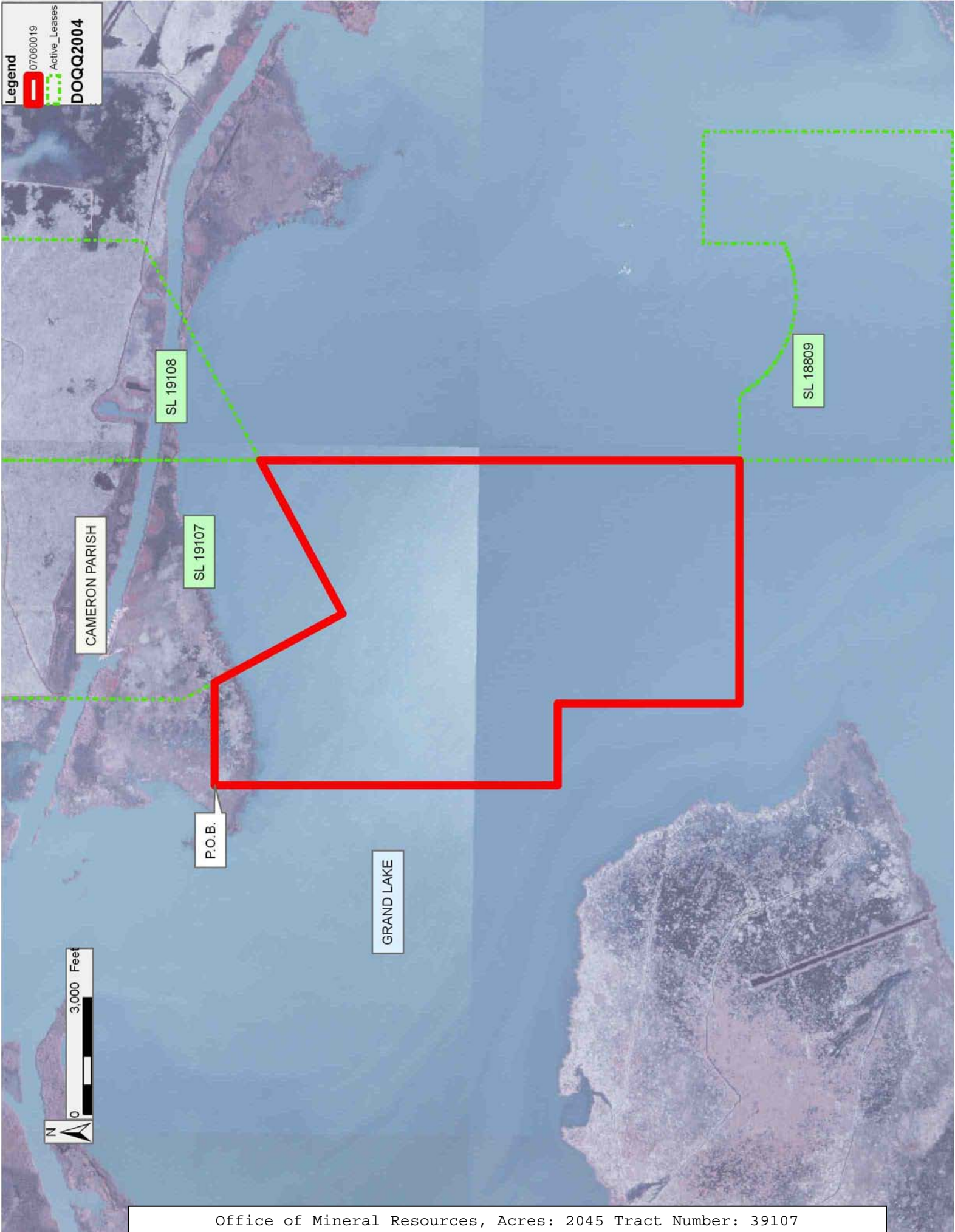
NOTE: The State of Louisiana does hereby reserve, and this lease shall be subject to, the imprescriptible right of surface use in the nature of a servitude in favor of the Department of Natural Resources, including its

Offices and Commissions, for the sole purpose of implementing, constructing, servicing and maintaining approved coastal zone management and/or restoration projects. Utilization of any and all rights derived under this lease by the mineral lessee, its agents, successors or assigns, shall not interfere with nor hinder the reasonable surface use by the Department of Natural Resources, its Offices or Commissions, as herein above reserved.

Applicant: CYPRESS ENERGY CORPORATION

Bidder	Cash Payment	Price/Acre	Rental	Oil	Gas	Other

**Legend**  
07060019  
Active\_Leases  
**DOQQ2004**



**TRACT 39108 - Cameron Parish, Louisiana**

All of the lands now or formerly constituting the beds and bottoms of all water bodies of every nature and description the title of which vests in the State of Louisiana, together with all islands arising therein and other lands formed by accretion or by reliction, where allowed by law, excepting tax adjudicated lands, and not presently under mineral lease on June 13, 2007, situated in Cameron Parish, Louisiana, and more particularly described as follows: Beginning at the Southwest corner of State Lease No. 19108 having Coordinates of X = 1,549,933.00 and Y = 471,523.95; thence North 61 degrees 39 minutes 18 seconds East 2,471.52 feet along the Southern boundary of said State Lease No. 19108 to a point having Coordinates of X = 1,552,108.20 and Y = 472,697.38; thence East 8,161.58 feet to a point having Coordinates of X = 1,560,269.78 and Y = 472,697.38; thence South 11,764.13 feet to the Northernmost Northwest corner of State Lease No. 1812, as amended, having Coordinates of X = 1,560,269.78 and Y = 460,933.25; thence along the boundary of said State Lease No. 1812 the following courses: South 00 degrees 42 minutes 06 seconds West 1,743.30 feet to a point having Coordinates of X = 1,560,248.43 and Y = 459,190.08 and North 89 degrees 17 minutes 54 seconds West 1,500.00 feet to a point having Coordinates of X = 1,558,748.54 and Y = 459,208.45; thence West 360.54 feet to a point on the East boundary of State Lease No. 18809 having Coordinates of X = 1,558,388.00 and Y = 459,208.45; thence along the boundary of said State Lease No. 18809 the following courses: North 927.55 feet to a point having Coordinates of X = 1,558,388.00 and Y = 460,136.00; West 2,885.03 feet to a point having Coordinates of X = 1,555,502.97 and Y = 460,136.00; South 2,066.95 feet to a point having a Coordinate of Y = 458,069.05 and Southwesterly to a point on the boundary of State Lease No. 344, as amended, having a Coordinate of X = 1,555,326.29; thence Northerly, Westerly, Southwesterly, Southerly and Southeasterly along the boundary of said State Lease No. 344 to a point having a Coordinate of Y = 459,207.00; thence West approximately 1,669 feet to a point having Coordinates of X = 1,549,933.00 and Y = 459,207.00; thence North 12,316.95 feet to the point of beginning, containing approximately **2,478 acres**, all as more particularly outlined on a plat on file in the Office of Mineral Resources, Department of Natural Resources. All bearings, distances and coordinates are based on Louisiana Coordinate System of 1927, (North or South Zone), where applicable.

NOTE: The above description of the Tract nominated for lease has been provided and corrected, where required, exclusively by the nomination party. Any mineral lease selected from this Tract and awarded by the Louisiana State Mineral Board shall be without warranty of any kind, either express, implied, or statutory, including, but not limited to, the implied warranties of merchantability and fitness for a particular purpose. Should the mineral lease awarded by the Louisiana State Mineral Board be subsequently modified, cancelled or abrogated due to the existence of conflicting leases, operating agreements, private claims or other future obligations or conditions which may affect all or any portion of the leased Tract, it shall not relieve the Lessee of the obligation to

pay any bonus due thereon to the Louisiana State Mineral Board, nor shall the Louisiana State Mineral Board be obligated to refund any consideration paid by the Lessor prior to such modification, cancellation, or abrogation, including, but not limited to, bonuses, rentals and royalties.

NOTE: The State of Louisiana does hereby reserve, and this lease shall be subject to, the imprescriptible right of surface use in the nature of a servitude in favor of the Department of Natural Resources, including its Offices and Commissions, for the sole purpose of implementing, constructing, servicing and maintaining approved coastal zone management and/or restoration projects. Utilization of any and all rights derived under this lease by the mineral lessee, its agents, successors or assigns, shall not interfere with nor hinder the reasonable surface use by the Department of Natural Resources, its Offices or Commissions, as herein above reserved.

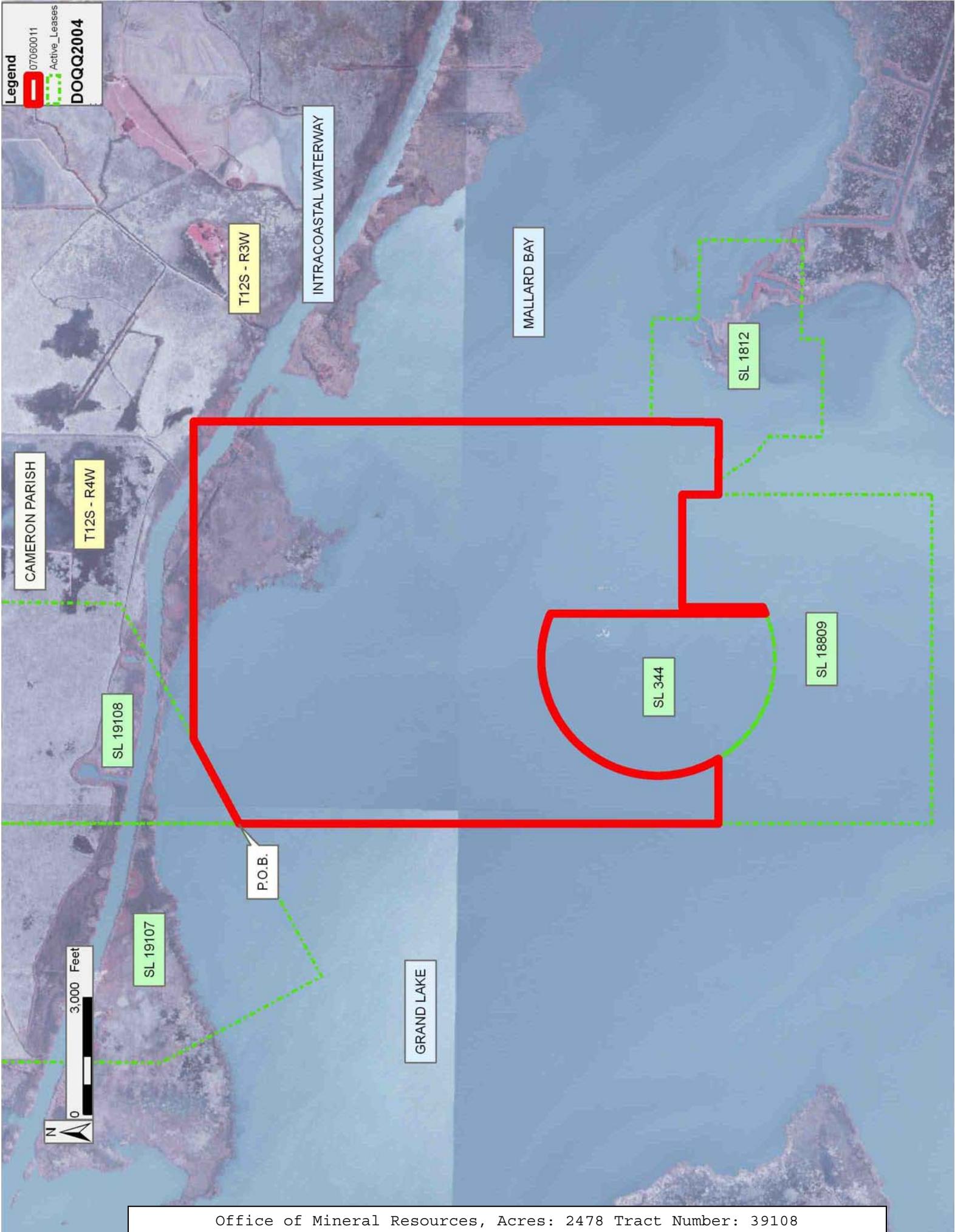
Applicant: CYPRESS ENERGY CORPORATION

Bidder	Cash Payment	Price/Acre	Rental	Oil	Gas	Other

**Legend**

07060011  
Active\_Leases

**DOQQ2004**



**TRACT 39109 - Cameron Parish, Louisiana**

All of the lands now or formerly constituting the beds and bottoms of all water bodies of every nature and description the title of which vests in the State of Louisiana, together with all islands arising therein and other lands formed by accretion or by reliction, where allowed by law, excepting tax adjudicated lands, and not presently under mineral lease on June 13, 2007, situated in Cameron Parish, Louisiana, and more particularly described as follows: Beginning at a point having Coordinates of X = 1,560,269.78 and Y = 472,697.38; thence East 15,974.57 feet to a point having Coordinates of X = 1,576,244.35 and Y = 472,697.38; thence South 12,166.52 feet to the Northeast corner of State Lease No. 18507 having Coordinates of X = 1,576,244.35 and Y = 460,530.86; thence West 3,577.64 feet along the North boundary of said State Lease No. 18507 to its Northwest corner, also being the Northeast corner of State Lease No. 18505 having Coordinates of X = 1,572,666.71 and Y = 460,530.86; thence along the boundary of said State Lease No. 18505 the following courses: West 7,387.14 feet to a point having Coordinates of X = 1,565,279.57 and Y = 460,530.86 and South 02 degrees 41 minutes 16 seconds West 3,485.67 feet to a point having Coordinates of X = 1,565,116.11 and Y = 457,049.02; thence West 212.85 feet to a point on the East boundary of State Lease No. 1812, as amended, having Coordinates of X = 1,564,903.26 and Y = 457,049.02; thence along the boundary of said State Lease No. 1812 the following courses: North 00 degree 42 minutes 06 seconds East 2,640.00 feet to a point having Coordinates of X = 1,564,935.59 and Y = 459,688.82; North 89 degrees 17 minutes 54 seconds West 2,040.70 feet to a point having Coordinates of X = 1,562,895.04 and Y = 459,713.81; North 00 degrees 42 minutes 06 seconds East 1,187.20 feet to a point having Coordinates of X = 1,562,909.58 and Y = 460,900.92 and North 89 degrees 17 minutes 54 seconds West 2,640.00 feet to a point having Coordinates of X = 1,560,269.78 and Y = 460,933.25; thence North 11,764.13 feet to the point of beginning, containing approximately **1,889 acres**, all as more particularly outlined on a plat on file in the Office of Mineral Resources, Department of Natural Resources. All bearings, distances and coordinates are based on Louisiana Coordinate System of 1927, (North or South Zone), where applicable.

NOTE: The above description of the Tract nominated for lease has been provided and corrected, where required, exclusively by the nomination party. Any mineral lease selected from this Tract and awarded by the Louisiana State Mineral Board shall be without warranty of any kind, either express, implied, or statutory, including, but not limited to, the implied warranties of merchantability and fitness for a particular purpose. Should the mineral lease awarded by the Louisiana State Mineral Board be subsequently modified, cancelled or abrogated due to the existence of conflicting leases, operating agreements, private claims or other future obligations or conditions which may affect all or any portion of the leased Tract, it shall not relieve the Lessee of the obligation to pay any bonus due thereon to the Louisiana State Mineral Board, nor shall the Louisiana State Mineral Board be obligated to refund any consideration

paid by the Lessor prior to such modification, cancellation, or abrogation, including, but not limited to, bonuses, rentals and royalties.

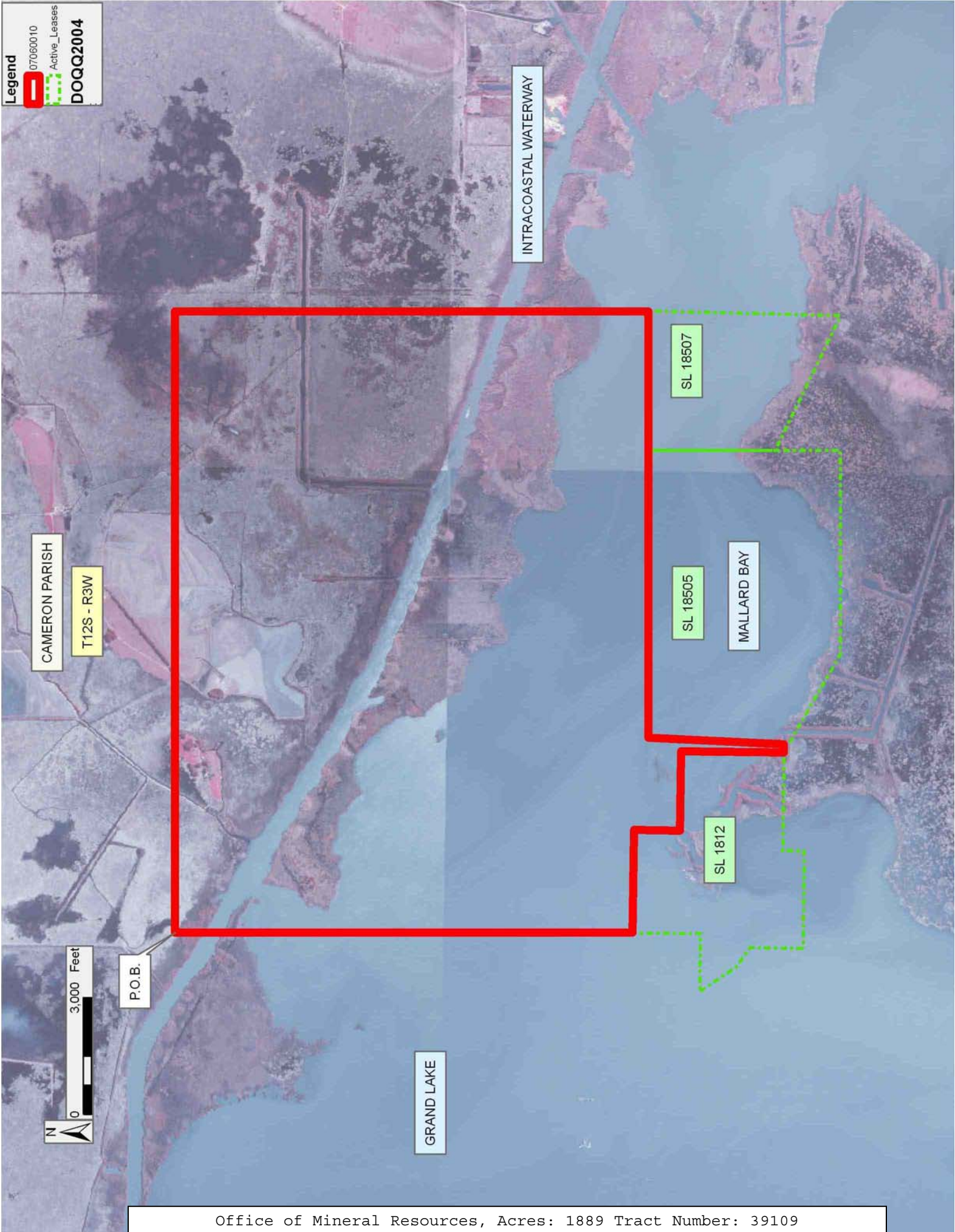
NOTE: The State of Louisiana does hereby reserve, and this lease shall be subject to, the imprescriptible right of surface use in the nature of a servitude in favor of the Department of Natural Resources, including its Offices and Commissions, for the sole purpose of implementing, constructing, servicing and maintaining approved coastal zone management and/or restoration projects. Utilization of any and all rights derived under this lease by the mineral lessee, its agents, successors or assigns, shall not interfere with nor hinder the reasonable surface use by the Department of Natural Resources, its Offices or Commissions, as herein above reserved.

Applicant: CYPRESS ENERGY CORPORATION

Bidder	Cash Payment	Price/Acre	Rental	Oil	Gas	Other



**Legend**  
07060010  
Active\_Leases  
**DOQQ2004**



CAMERON PARISH

T12S - R3W

INTRACOASTAL WATERWAY

SL 18507

SL 18505

MALLARD BAY

SL 1812

GRAND LAKE

P.O.B.

3,000 Feet

**TRACT 39110 - Assumption Lafourche and St. James Parishes, Louisiana**

All of the lands now or formerly constituting the beds and bottoms of all water bodies of every nature and description the title of which vests in the State of Louisiana, together with all islands arising therein and other lands formed by accretion or by reliction, where allowed by law, excepting tax adjudicated lands, and not presently under mineral lease on June 13, 2007, situated in Assumption Lafourche and St. James Parishes, Louisiana, and more particularly described as follows: Beginning at a point having Coordinates of X = 2,130,546.00 and Y = 464,449.00; thence East 16,480.00 feet to a point having Coordinates of X = 2,147,026.00 and Y = 464,449.00; thence South 18,480.00 feet to a point having Coordinates of X = 2,147,026.00 and Y = 445,969.00; thence West 16,480.00 feet to a point having Coordinates of X = 2,130,546.00 and Y = 445,969.00; thence North 18,480.00 feet to the point of beginning, containing approximately **61 acres**, all as more particularly outlined on a plat on file in the Office of Mineral Resources, Department of Natural Resources. All bearings, distances and coordinates are based on Louisiana Coordinate System of 1927, (North or South Zone), where applicable.

NOTE: The above description of the Tract nominated for lease has been provided and corrected, where required, exclusively by the nomination party. Any mineral lease selected from this Tract and awarded by the Louisiana State Mineral Board shall be without warranty of any kind, either express, implied, or statutory, including, but not limited to, the implied warranties of merchantability and fitness for a particular purpose. Should the mineral lease awarded by the Louisiana State Mineral Board be subsequently modified, cancelled or abrogated due to the existence of conflicting leases, operating agreements, private claims or other future obligations or conditions which may affect all or any portion of the leased Tract, it shall not relieve the Lessee of the obligation to pay any bonus due thereon to the Louisiana State Mineral Board, nor shall the Louisiana State Mineral Board be obligated to refund any consideration paid by the Lessor prior to such modification, cancellation, or abrogation, including, but not limited to, bonuses, rentals and royalties.

NOTE: The State of Louisiana does hereby reserve, and this lease shall be subject to, the imprescriptible right of surface use in the nature of a servitude in favor of the Department of Natural Resources, including its Offices and Commissions, for the sole purpose of implementing, constructing, servicing and maintaining approved coastal zone management and/or restoration projects. Utilization of any and all rights derived under this lease by the mineral lessee, its agents, successors or assigns, shall not interfere with nor hinder the reasonable surface use by the Department of Natural Resources, its Offices or Commissions, as herein above reserved.

Applicant: CHARLESTON ENERGY, INC.

Bidder	Cash Payment	Price/Acre	Rental	Oil	Gas	Other

**Legend**  
 077060075  
 Counties  
**DOQQ2004**



BAYOU VERRET

ST JAMES PARISH

T13S - R16E

ASSUMPTION PARISH

T13S - R15E

P.O.B.

BAYOU CITAMON

LAFOURCHE PARISH

T14S - R16E



**TRACT 39111 - Lafourche and St. James Parishes, Louisiana**

All of the lands now or formerly constituting the beds and bottoms of all water bodies of every nature and description the title of which vests in the State of Louisiana, together with all islands arising therein and other lands formed by accretion or by reliction, where allowed by law, excepting tax adjudicated lands, and not presently under mineral lease on June 13, 2007, situated in Lafourche and St. James Parishes, Louisiana, and more particularly described as follows: Beginning at a point having Coordinates of X = 2,147,026.00 and Y = 464,449.00; thence East 15,740.25 feet to a point having Coordinates of X = 2,162,766.25 and Y = 464,449.00; thence South 18,480.00 feet to a point having Coordinates of X = 2,162,766.25 and Y = 445,969.00; thence West 15,740.25 feet to a point having Coordinates of X = 2,147,026.00 and Y = 445,969.00; thence North 18,480.00 feet to the point of point of beginning, (this nomination includes only waterbottoms claimed and owned by the state and specifically excludes any land which the state may claim or own and to which the mineral rights are vested in the state) containing approximately **56 acres**, all as more particularly outlined on a plat on file in the Office of Mineral Resources, Department of Natural Resources. All bearings, distances and coordinates are based on Louisiana Coordinate System of 1927, (North or South Zone), where applicable.

NOTE: The above description of the Tract nominated for lease has been provided and corrected, where required, exclusively by the nomination party. Any mineral lease selected from this Tract and awarded by the Louisiana State Mineral Board shall be without warranty of any kind, either express, implied, or statutory, including, but not limited to, the implied warranties of merchantability and fitness for a particular purpose. Should the mineral lease awarded by the Louisiana State Mineral Board be subsequently modified, cancelled or abrogated due to the existence of conflicting leases, operating agreements, private claims or other future obligations or conditions which may affect all or any portion of the leased Tract, it shall not relieve the Lessee of the obligation to pay any bonus due thereon to the Louisiana State Mineral Board, nor shall the Louisiana State Mineral Board be obligated to refund any consideration paid by the Lessor prior to such modification, cancellation, or abrogation, including, but not limited to, bonuses, rentals and royalties.

NOTE: The State of Louisiana does hereby reserve, and this lease shall be subject to, the imprescriptible right of surface use in the nature of a servitude in favor of the Department of Natural Resources, including its Offices and Commissions, for the sole purpose of implementing, constructing, servicing and maintaining approved coastal zone management and/or restoration projects. Utilization of any and all rights derived under this lease by the mineral lessee, its agents, successors or assigns, shall not interfere with nor hinder the reasonable surface use by the Department of Natural Resources, its Offices or Commissions, as herein above reserved.

Applicant: CHARLESTON ENERGY, INC.

Bidder	Cash Payment	Price/Acre	Rental	Oil	Gas	Other

**Legend**  
07060076  
Counties  
**DOQQ2004**

ST JAMES PARISH

T13S - R16E

LAFOURCHE PARISH

T14S - R16E

P.O.B.

BAYOU CITAMON

ASSUMPTION PARISH

T13S - R15E



**TRACT 39112 - Cameron Parish, Louisiana**

All of the lands now or formerly constituting the beds and bottoms of all water bodies of every nature and description the title of which vests in the State of Louisiana, together with all islands arising therein and other lands formed by accretion or by reliction, where allowed by law, excepting tax adjudicated lands, and not presently under mineral lease on June 13, 2007, situated in Cameron Parish, Louisiana, and more particularly described as follows: Beginning at a point having Coordinates of X = 1,525,301.04 and Y = 459,207.00; thence East 9,196.55 feet to a point having Coordinates of X = 1,534,497.59 and Y = 459,207.00; thence South 13,381.39 feet to a point having Coordinates of X = 1,534,497.59 and Y = 445,825.61; thence West 9,196.55 feet to a point having Coordinates of X = 1,525,301.04 and Y = 445,825.61; thence North 13,381.39 feet to the point of beginning, containing approximately **828 acres**, all as more particularly outlined on a plat on file in the Office of Mineral Resources, Department of Natural Resources. All bearings, distances and coordinates are based on Louisiana Coordinate System of 1927, (North or South Zone), where applicable.

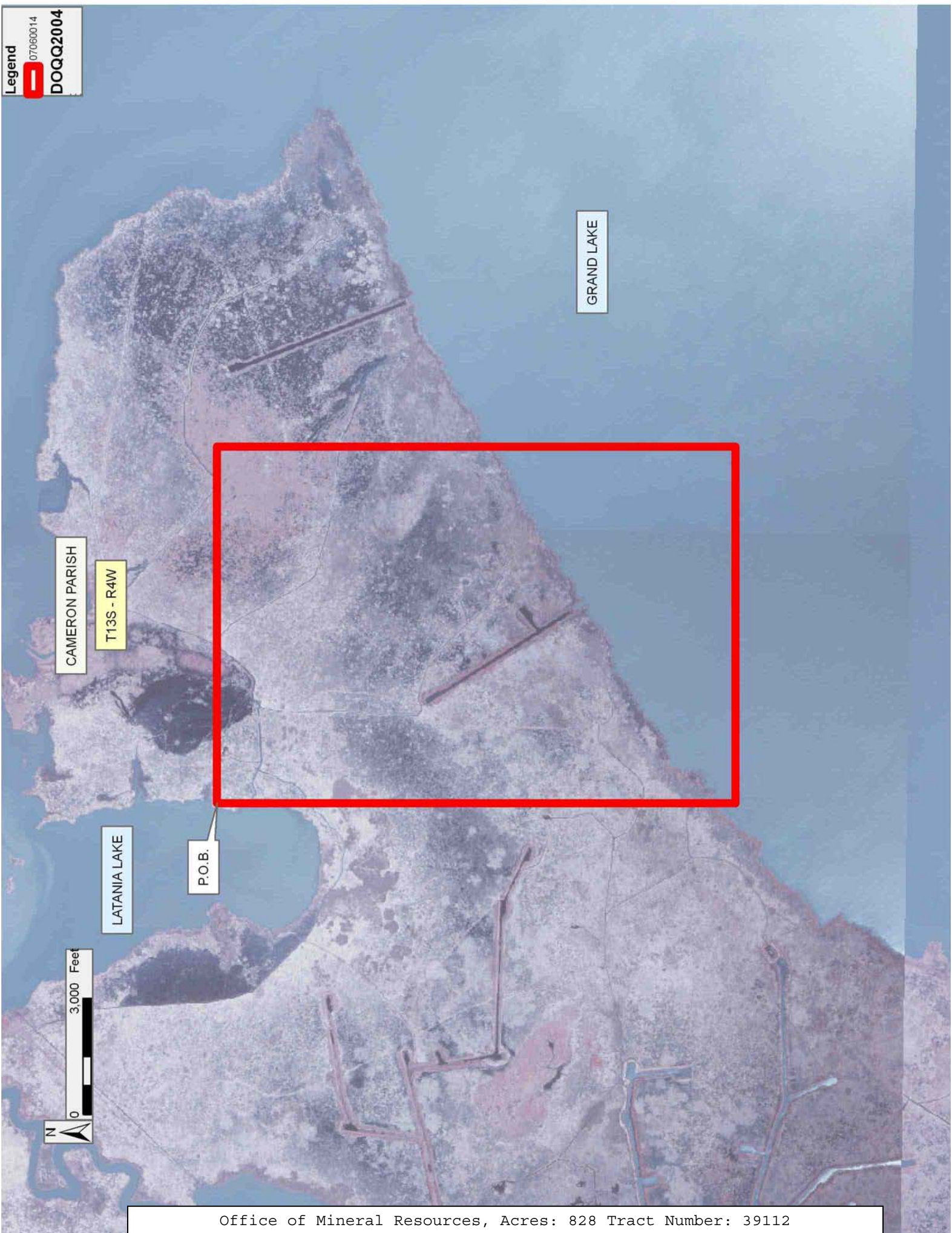
NOTE: The above description of the Tract nominated for lease has been provided and corrected, where required, exclusively by the nomination party. Any mineral lease selected from this Tract and awarded by the Louisiana State Mineral Board shall be without warranty of any kind, either express, implied, or statutory, including, but not limited to, the implied warranties of merchantability and fitness for a particular purpose. Should the mineral lease awarded by the Louisiana State Mineral Board be subsequently modified, cancelled or abrogated due to the existence of conflicting leases, operating agreements, private claims or other future obligations or conditions which may affect all or any portion of the leased Tract, it shall not relieve the Lessee of the obligation to pay any bonus due thereon to the Louisiana State Mineral Board, nor shall the Louisiana State Mineral Board be obligated to refund any consideration paid by the Lessor prior to such modification, cancellation, or abrogation, including, but not limited to, bonuses, rentals and royalties.

NOTE: The State of Louisiana does hereby reserve, and this lease shall be subject to, the imprescriptible right of surface use in the nature of a servitude in favor of the Department of Natural Resources, including its Offices and Commissions, for the sole purpose of implementing, constructing, servicing and maintaining approved coastal zone management and/or restoration projects. Utilization of any and all rights derived under this lease by the mineral lessee, its agents, successors or assigns, shall not interfere with nor hinder the reasonable surface use by the Department of Natural Resources, its Offices or Commissions, as herein above reserved.



Applicant: CYPRESS ENERGY CORPORATION

Bidder	Cash Payment	Price/Acre	Rental	Oil	Gas	Other



GRAND LAKE

CAMERON PARISH

T13S - R4W

LATANIA LAKE

P.O.B.

0 3,000 Feet  
N

**TRACT 39113 - Cameron Parish, Louisiana**

All of the lands now or formerly constituting the beds and bottoms of all water bodies of every nature and description the title of which vests in the State of Louisiana, together with all islands arising therein and other lands formed by accretion or by reliction, where allowed by law, excepting tax adjudicated lands, and not presently under mineral lease on June 13, 2007, situated in Cameron Parish, Louisiana, and more particularly described as follows: Beginning at a point having Coordinates of X = 1,534,497.59 and Y = 459,207.00; thence East 9,192.65 feet to a point having Coordinates of X = 1,543,690.24 and Y = 459,207.00; thence South 00 degrees 01 minutes 00 seconds West 13,381.39 feet to a point having Coordinates of X = 1,543,686.35 and Y = 445,825.61; thence West 9,188.76 feet to a point having Coordinates of X = 1,534,497.59 and Y = 445,825.61; thence North 13,381.39 feet to the point of beginning, containing approximately **2,011 acres**, all as more particularly outlined on a plat on file in the Office of Mineral Resources, Department of Natural Resources. All bearings, distances and coordinates are based on Louisiana Coordinate System of 1927, (North or South Zone), where applicable.

NOTE: The above description of the Tract nominated for lease has been provided and corrected, where required, exclusively by the nomination party. Any mineral lease selected from this Tract and awarded by the Louisiana State Mineral Board shall be without warranty of any kind, either express, implied, or statutory, including, but not limited to, the implied warranties of merchantability and fitness for a particular purpose. Should the mineral lease awarded by the Louisiana State Mineral Board be subsequently modified, cancelled or abrogated due to the existence of conflicting leases, operating agreements, private claims or other future obligations or conditions which may affect all or any portion of the leased Tract, it shall not relieve the Lessee of the obligation to pay any bonus due thereon to the Louisiana State Mineral Board, nor shall the Louisiana State Mineral Board be obligated to refund any consideration paid by the Lessor prior to such modification, cancellation, or abrogation, including, but not limited to, bonuses, rentals and royalties.

NOTE: The State of Louisiana does hereby reserve, and this lease shall be subject to, the imprescriptible right of surface use in the nature of a servitude in favor of the Department of Natural Resources, including its Offices and Commissions, for the sole purpose of implementing, constructing, servicing and maintaining approved coastal zone management and/or restoration projects. Utilization of any and all rights derived under this lease by the mineral lessee, its agents, successors or assigns, shall not interfere with nor hinder the reasonable surface use by the Department of Natural Resources, its Offices or Commissions, as herein above reserved.

Applicant: CYPRESS ENERGY CORPORATION

Bidder	Cash Payment	Price/Acre	Rental	Oil	Gas	Other

GRAND LAKE

CAMERON PARISH

T13S - R4W



P.O.B.



**TRACT 39114 - Cameron Parish, Louisiana**

All of the lands now or formerly constituting the beds and bottoms of all water bodies of every nature and description the title of which vests in the State of Louisiana, together with all islands arising therein and other lands formed by accretion or by reliction, where allowed by law, excepting tax adjudicated lands, and not presently under mineral lease on June 13, 2007, situated in Cameron Parish, Louisiana, and more particularly described as follows: Beginning at a point having Coordinates of X = 1,543,690.24 and Y = 459,207.00; thence East 6,242.76 feet to the Northwest corner of State Lease No. 18809 having Coordinates of X = 1,549,933.00 and Y = 459,207.00; thence South 5,480.00 feet along the West boundary of said State Lease No. 18809 to its Southwest corner having Coordinates of X = 1,549,933.00 and Y = 453,727.00; thence continue South 7,901.39 feet to a point having Coordinates of X = 1,549,933.00 and Y = 445,825.61; thence West 6,246.65 feet to a point having Coordinates of X = 1,543,686.35 and Y = 445,825.61; thence North 00 degrees 01 minutes 00 seconds East 13,381.39 feet to the point of beginning, containing approximately **1,918.34 acres**, all as more particularly outlined on a plat on file in the Office of Mineral Resources, Department of Natural Resources. All bearings, distances and coordinates are based on Louisiana Coordinate System of 1927, (North or South Zone), where applicable.

NOTE: The above description of the Tract nominated for lease has been provided and corrected, where required, exclusively by the nomination party. Any mineral lease selected from this Tract and awarded by the Louisiana State Mineral Board shall be without warranty of any kind, either express, implied, or statutory, including, but not limited to, the implied warranties of merchantability and fitness for a particular purpose. Should the mineral lease awarded by the Louisiana State Mineral Board be subsequently modified, cancelled or abrogated due to the existence of conflicting leases, operating agreements, private claims or other future obligations or conditions which may affect all or any portion of the leased Tract, it shall not relieve the Lessee of the obligation to pay any bonus due thereon to the Louisiana State Mineral Board, nor shall the Louisiana State Mineral Board be obligated to refund any consideration paid by the Lessor prior to such modification, cancellation, or abrogation, including, but not limited to, bonuses, rentals and royalties.

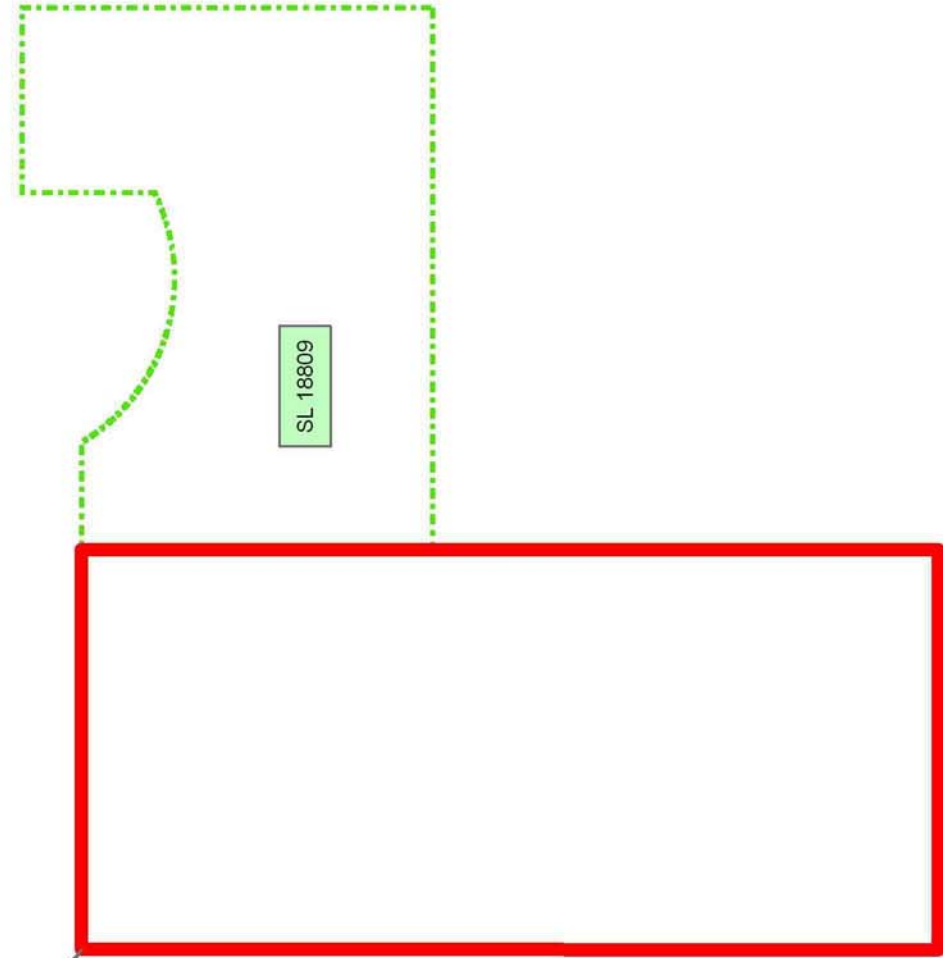
NOTE: The State of Louisiana does hereby reserve, and this lease shall be subject to, the imprescriptible right of surface use in the nature of a servitude in favor of the Department of Natural Resources, including its Offices and Commissions, for the sole purpose of implementing, constructing, servicing and maintaining approved coastal zone management and/or restoration projects. Utilization of any and all rights derived under this lease by the mineral lessee, its agents, successors or assigns, shall not interfere with nor hinder the reasonable surface use by the Department of Natural Resources, its Offices or Commissions, as herein above reserved.

Applicant: CYPRESS ENERGY CORPORATION

Bidder	Cash Payment	Price/Acre	Rental	Oil	Gas	Other

**Legend**  
07060012  
Active\_Leases

CAMERON PARISH



GRAND LAKE





**TRACT 39115 - Cameron Parish, Louisiana**

All of the lands now or formerly constituting the beds and bottoms of all water bodies of every nature and description the title of which vests in the State of Louisiana, together with all islands arising therein and other lands formed by accretion or by reliction, where allowed by law, excepting tax adjudicated lands, and not presently under mineral lease on June 13, 2007, situated in Cameron Parish, Louisiana, and more particularly described as follows: Beginning at the Southwest corner of State Lease No. 18809 having Coordinates of X = 1,549,933.00 and Y = 453,727.00; thence along the boundary of said State Lease No. 18809 the following courses: East 8,455.00 feet to a point having Coordinates of X = 1,558,388.00 and Y = 453,727.00 and North 5,481.45 feet to a point having Coordinates of X = 1,558,388.00 and Y = 459,208.45; thence East 360.54 feet to a point on the Western boundary of State Lease No. 1812, as amended, having Coordinates of X = 1,558,748.54 and Y = 459,208.45; thence along the boundary of said State Lease No. 1812 the following courses: South 33 degrees 58 minutes 54 seconds East 1,094.48 feet to a point having Coordinates of X = 1,559,360.28 and Y = 458,300.89; South 53 degrees 06 minutes 18 seconds East 660.45 feet to a point having Coordinates of X = 1,559,888.46 and Y = 457,904.40; South 00 degrees 42 minutes 06 seconds West 1,350.00 feet to a point having Coordinates of X = 1,559,871.93 and Y = 456,554.50 and South 89 degrees 17 minutes 54 seconds East 376.53 feet to a point having Coordinates of X = 1,560,248.43 and Y = 456,549.89; thence South 10,724.28 feet to a point having Coordinates of X = 1,560,248.43 and Y = 445,825.61; thence West 10,315.43 feet to a point having Coordinates of X = 1,549,933.00 and Y = 445,825.61; thence North 7,901.39 feet to the point of beginning, containing approximately **2,045 acres**, all as more particularly outlined on a plat on file in the Office of Mineral Resources, Department of Natural Resources. All bearings, distances and coordinates are based on Louisiana Coordinate System of 1927, (North or South Zone), where applicable.

NOTE: The above description of the Tract nominated for lease has been provided and corrected, where required, exclusively by the nomination party. Any mineral lease selected from this Tract and awarded by the Louisiana State Mineral Board shall be without warranty of any kind, either express, implied, or statutory, including, but not limited to, the implied warranties of merchantability and fitness for a particular purpose. Should the mineral lease awarded by the Louisiana State Mineral Board be subsequently modified, cancelled or abrogated due to the existence of conflicting leases, operating agreements, private claims or other future obligations or conditions which may affect all or any portion of the leased Tract, it shall not relieve the Lessee of the obligation to pay any bonus due thereon to the Louisiana State Mineral Board, nor shall the Louisiana State Mineral Board be obligated to refund any consideration paid by the Lessor prior to such modification, cancellation, or abrogation, including, but not limited to, bonuses, rentals and royalties.

NOTE: The State of Louisiana does hereby reserve, and this lease shall be subject to, the imprescriptible right of surface use in the nature of a servitude in favor of the Department of Natural Resources, including its Offices and Commissions, for the sole purpose of implementing, constructing, servicing and maintaining approved coastal zone management and/or restoration projects. Utilization of any and all rights derived under this lease by the mineral lessee, its agents, successors or assigns, shall not interfere with nor hinder the reasonable surface use by the Department of Natural Resources, its Offices or Commissions, as herein above reserved.

Applicant: CYPRESS ENERGY CORPORATION

Bidder	Cash Payment	Price/Acre	Rental	Oil	Gas	Other

**Legend**  
07060017  
Active\_Leases  
**DOQQ2004**

MALLARD BAY

UMBRELLA BAY

SL 1812

CAMERON PARISH

SL 18809

P.O.B.

GRAND LAKE



**TRACT 39116 - Cameron Parish, Louisiana**

All of the lands now or formerly constituting the beds and bottoms of all water bodies of every nature and description the title of which vests in the State of Louisiana, together with all islands arising therein and other lands formed by accretion or by reliction, where allowed by law, excepting tax adjudicated lands, and not presently under mineral lease on June 13, 2007, situated in Cameron Parish, Louisiana, and more particularly described as follows: Beginning at a point on the South boundary of State Lease No. 1812, as amended, having Coordinates of X = 1,560,248.43 and Y = 456,549.89; thence along the boundary of said State Lease No. 1812 the following courses: South 89 degrees 17 minutes 54 seconds East 2,123.47 feet to a point having Coordinates of X = 1,562,371.74 and Y = 456,523.88; North 00 degrees 42 minutes 06 seconds East 556.10 feet to a point having Coordinates of X = 1,562,378.55 and Y = 457,079.94 and South 89 degrees 17 minutes 54 seconds East 2,524.90 feet to a point having Coordinates of X = 1,564,903.26 and Y = 457,049.02; thence East 212.85 feet to a point on the West boundary of State Lease No. 18505 having Coordinates of X = 1,565,116.11 and Y = 457,049.02; thence along the boundary of said State Lease No. 18505 the following courses: South 02 degrees 41 minutes 16 seconds West 118.92 feet to a point having Coordinates of X = 1,565,110.53 and Y = 456,930.23; South 60 degrees 10 minutes 57 seconds East 2,676.01 feet to a point having Coordinates of X = 1,567,432.27 and Y = 455,599.61 and East 1,754.94 feet to a point having Coordinates of X = 1,569,187.21 and Y = 455,599.61; thence South 9,774.00 feet to a point having Coordinates of X = 1,569,187.21 and Y = 445,825.61; thence West 8,938.78 feet to a point having Coordinates of X = 1,560,248.43 and Y = 445,825.61; thence North 10,724.28 feet to the point of beginning, containing approximately **1,271 acres**, all as more particularly outlined on a plat on file in the Office of Mineral Resources, Department of Natural Resources. All bearings, distances and coordinates are based on Louisiana Coordinate System of 1927, (North or South Zone), where applicable.

NOTE: The above description of the Tract nominated for lease has been provided and corrected, where required, exclusively by the nomination party. Any mineral lease selected from this Tract and awarded by the Louisiana State Mineral Board shall be without warranty of any kind, either express, implied, or statutory, including, but not limited to, the implied warranties of merchantability and fitness for a particular purpose. Should the mineral lease awarded by the Louisiana State Mineral Board be subsequently modified, cancelled or abrogated due to the existence of conflicting leases, operating agreements, private claims or other future obligations or conditions which may affect all or any portion of the leased Tract, it shall not relieve the Lessee of the obligation to pay any bonus due thereon to the Louisiana State Mineral Board, nor shall the Louisiana State Mineral Board be obligated to refund any consideration paid by the Lessor prior to such modification, cancellation, or abrogation, including, but not limited to, bonuses, rentals and royalties.

NOTE: The State of Louisiana does hereby reserve, and this lease shall be subject to, the imprescriptible right of surface use in the nature of a servitude in favor of the Department of Natural Resources, including its Offices and Commissions, for the sole purpose of implementing, constructing, servicing and maintaining approved coastal zone management and/or restoration projects. Utilization of any and all rights derived under this lease by the mineral lessee, its agents, successors or assigns, shall not interfere with nor hinder the reasonable surface use by the Department of Natural Resources, its Offices or Commissions, as herein above reserved.

Applicant: CYPRESS ENERGY CORPORATION

Bidder	Cash Payment	Price/Acre	Rental	Oil	Gas	Other

**Legend**

07060018

Active\_Leases

**DOQQ2004**

