

TRACT 38369 - Cameron, Jefferson Davis and Vermilion Parishes, Louisiana

All of the lands now or formerly constituting the beds and bottoms of all water bodies of every nature and description the title of which vests in the State of Louisiana, together with all islands arising therein and other lands formed by accretion or by reliction, where allowed by law, excepting tax adjudicated lands, and not presently under mineral lease and cross hatched on June 14, 2006, situated in Cameron, Jefferson Davis and Vermilion Parishes, Louisiana, and more particularly described as follows: Beginning at a point having Coordinates of $X = 1,558,392.55$ and $Y = 511,793.33$; thence East 7,755.44 feet to a point on the West line of State Lease No. 12651, as amended having Coordinates of $X = 1,566,147.99$ and $Y = 511,793.33$; thence along the boundaries of said State Lease No. 12651 the following: along an arc to the left with a center at $X = 1,570,193.82$ and $Y = 508,855.43$ and a radius of 5,000.00 feet to a point having Coordinates of $X = 1,565,622.47$ and $Y = 510,880.97$, along an arc to the left with a center at $X = 1,570,403.20$ and $Y = 509,416.52$ and a radius of 5,000.00 feet to a point having Coordinates of $X = 1,565,403.43$ and $Y = 509,368.44$, along an arc to the left with a center at $X = 1,567,690.27$ and $Y = 515,345.93$ and a radius of 6,400.00 feet to a point having Coordinates of $X = 1,566,686.22$ and $Y = 509,025.18$ and along an arc to the left with a center at $X = 1,568,322.32$ and $Y = 518,890.43$ and a radius of 10,000.00 feet to a point also being the Southeast corner of said State Lease No. 12651 and the Southwest corner of State Lease No. 11384, as amended having Coordinates of $X = 1,567,713.69$ and $Y = 508,908.97$; thence along the boundaries of said State Lease No. 11384 the following: Easterly on a straight line to a point and Southwesterly along an arc to the Northwest corner of State Lease No. 10833, as amended; thence along the boundary of said State Lease No. 10833 the following: Southeasterly along an arc, Westerly along an arc and Southeasterly along an arc to its Southwest corner and the Northwest corner of State Lease No. 7515, as amended; thence Southeasterly along an arc on the west line of said State Lease No. 7515 to its Southern tip being a point on the West line of the Southern Portion of State Lease No. 7584, as amended; thence along the boundary of said State Lease No. 7584 the following: South to a point and Southeasterly along an arc to a point having $X = 1,570,133.63$; thence South 42 degrees 07 minutes 12 seconds West to a point on the Northern boundary of State Lease No. 14077, as amended having Coordinates of $X = 1,568,174.77$ and $Y = 503,614.28$; thence along the boundaries of said State Lease No. 14077 the following: along an arc to the left with a center at $X = 1,566,464.63$ and $Y = 498,703.53$ and a radius of 5,200.00 feet to a point having Coordinates of $X = 1,567,637.30$ and $Y = 503,769.58$, along an arc to the left with a center at $X = 1,564,871.65$ and $Y = 495,205.05$ and a radius of 9,000.00 feet to a point having Coordinates of $X = 1,566,144.24$ and $Y = 504,114.62$, along an arc to the left with a center at $X = 1,565,824.83$ and $Y = 502,140.29$ and a radius of 2,000.00 feet to a point having Coordinates of $X = 1,565,071.11$ and $Y = 503,992.83$, along an arc to the left with a center at $X = 1,560,097.13$ and $Y = 512,668.06$ and a radius of 10,000 feet to a point having Coordinates of $X = 1,564,026.03$ and $Y = 503,472.20$, along an arc to the left with a center at $X = 1,564,397.70$ and $Y =$

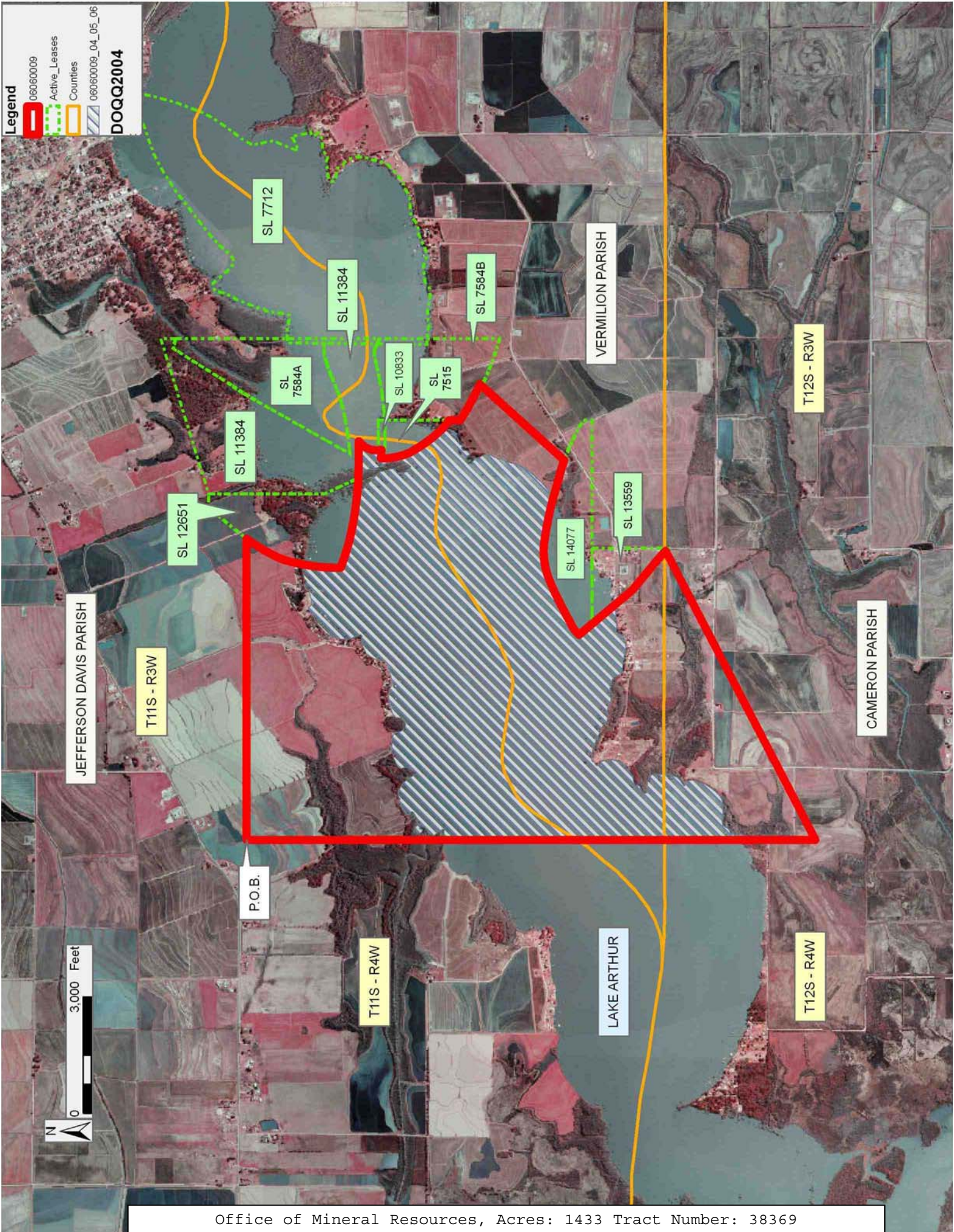
502,543.84 and a radius of 1,000.00 feet to a point having Coordinates of X = 1,563,675.00 and Y = 503,235.00 and South 39 degrees 47 minutes 05 seconds East 435.94 feet to its Southwest corner and the Northwest corner of State Lease No. 13559 having Coordinates of X = 1,563,953.96 and Y = 502,900.00; thence along the boundaries of said State Lease No. 13559 the following: South 39 degrees 47 minutes 08 seconds East 1,353.38 feet to a point having Coordinates of X = 1,564,820.01 and Y = 501,860.00, South 50 degrees 41 minutes 22 seconds East 905.78 feet to a point having Coordinates of X = 1,565,520.83 and Y = 501,286.17 and South 48 degrees 33 minutes 45 seconds East 432.43 feet to a point having Coordinates of X = 1,565,845.01 and Y = 500,999.99; thence South 62 degrees 37 minutes 44 seconds West 8,391.96 feet to a point having Coordinates of X = 1,558,392.55 and Y = 497,141.78; thence North 14,651.55 feet to the point of beginning, containing approximately **1,433 acres**, all as more particularly outlined on a plat on file in the Office of Mineral Resources, Department of Natural Resources. All bearings, distances and coordinates are based on Louisiana Coordinate System of 1927, (North or South Zone), where applicable.

NOTE: The above description of the Tract nominated for lease has been provided and corrected, where required, exclusively by the nomination party. Any mineral lease selected from this Tract and awarded by the Louisiana State Mineral Board shall be without warranty of any kind, either express, implied, or statutory, including, but not limited to, the implied warranties of merchantability and fitness for a particular purpose. Should the mineral lease awarded by the Louisiana State Mineral Board be subsequently modified, cancelled or abrogated due to the existence of conflicting leases, operating agreements, private claims or other future obligations or conditions which may affect all or any portion of the leased Tract, it shall not relieve the Lessee of the obligation to pay any bonus due thereon to the Louisiana State Mineral Board, nor shall the Louisiana State Mineral Board be obligated to refund any consideration paid by the Lessor prior to such modification, cancellation, or abrogation, including, but not limited to, bonuses, rentals and royalties.

NOTE: The State of Louisiana does hereby reserve, and this lease shall be subject to, the imprescriptible right of surface use in the nature of a servitude in favor of the Department of Natural Resources, including its Offices and Commissions, for the sole purpose of implementing, constructing, servicing and maintaining approved coastal zone management and/or restoration projects. Utilization of any and all rights derived under this lease by the mineral lessee, its agents, successors or assigns, shall not interfere with nor hinder the reasonable surface use by the Department of Natural Resources, its Offices or Commissions, as herein above reserved.

Applicant: ALJ ENERGY

Bidder	Cash Payment	Price/ Acre	Rental	Oil	Gas	Other



TRACT 38370 - St. James Parish, Louisiana

All of the lands now or formerly constituting the beds and bottoms of all water bodies of every nature and description the title of which vests in the State of Louisiana, together with all islands arising therein and other lands formed by accretion or by reliction, where allowed by law, excepting tax adjudicated lands, and not presently under mineral lease and cross hatched on June 14, 2006, situated in St. James Parish, Louisiana, and more particularly described as follows: Beginning at the a point having Coordinates of X = 2,195,308.00 and Y = 503,432.00; thence South 20 degrees 48 minutes 39 seconds East 16,102.56 feet to a point having Coordinates of X = 2,201,029.00 and Y = 488,380.00; thence South 69 degrees 11 minutes 16 seconds West 18,479.81 feet to a point having Coordinates of X = 2,183,755.00 and Y = 481,814.00; thence North 20 degrees 48 minutes 39 seconds West 16,102.56 feet to a point having Coordinates of X = 2,178,034.00 and Y = 496,866.00; thence North 69 degrees 11 minutes 16 seconds East 18,479.81 feet to the point of beginning, containing approximately **1,116 acres**, all as more particularly outlined on a plat on file in the Office of Mineral Resources, Department of Natural Resources. All bearings, distances and coordinates are based on Louisiana Coordinate System of 1927, (North or South Zone), where applicable.

NOTE: The above description of the Tract nominated for lease has been provided and corrected, where required, exclusively by the nomination party. Any mineral lease selected from this Tract and awarded by the Louisiana State Mineral Board shall be without warranty of any kind, either express, implied, or statutory, including, but not limited to, the implied warranties of merchantability and fitness for a particular purpose. Should the mineral lease awarded by the Louisiana State Mineral Board be subsequently modified, cancelled or abrogated due to the existence of conflicting leases, operating agreements, private claims or other future obligations or conditions which may affect all or any portion of the leased Tract, it shall not relieve the Lessee of the obligation to pay any bonus due thereon to the Louisiana State Mineral Board, nor shall the Louisiana State Mineral Board be obligated to refund any consideration paid by the Lessor prior to such modification, cancellation, or abrogation, including, but not limited to, bonuses, rentals and royalties.

NOTE: The State of Louisiana does hereby reserve, and this lease shall be subject to, the imprescriptible right of surface use in the nature of a servitude in favor of the Department of Natural Resources, including its Offices and Commissions, for the sole purpose of implementing, constructing, servicing and maintaining approved coastal zone management and/or restoration projects. Utilization of any and all rights derived under this lease by the mineral lessee, its agents, successors or assigns, shall not interfere with nor hinder the reasonable surface use by the Department of Natural Resources, its Offices or Commissions, as herein above reserved.

Applicant: PATRICK L. DONOHUE PETROLEUM PROPERTIES, INC.

Bidder	Cash Payment	Price/ Acre	Rental	Oil	Gas	Other

Legend

- 060600031
- Active_Leases
- Counties
- 060600031_04_07_06
- DOQQ2004**



ST JOHN
THE BAPTIST PARISH

P.O.B.

ST JAMES PARISH

T12S - R17E

MISSISSIPPI RIVER

TRACT 38371 - St. James Parish, Louisiana

All of the lands now or formerly constituting the beds and bottoms of all water bodies of every nature and description the title of which vests in the State of Louisiana, together with all islands arising therein and other lands formed by accretion or by reliction, where allowed by law, excepting tax adjudicated lands, and not presently under mineral lease and cross hatched on June 14, 2006, situated in St. James Parish, Louisiana, and more particularly described as follows: Beginning at the a point having Coordinates of X = 2,178,034.00 and Y = 496,866.00; thence South 20 degrees 48 minutes 39 seconds East 16,102.56 feet to a point having Coordinates of X = 2,183,755.00 and Y = 481,814.00; thence South 69 degrees 11 minutes 16 seconds West 18,479.81 feet to a point having Coordinates of X = 2,166,481.00 and Y = 475,248.00; thence North 20 degrees 48 minutes 39 seconds West 16,102.56 feet to a point having Coordinates of X = 2,160,760.00 and Y = 490,300.00; thence North 69 degrees 11 minutes 16 seconds East 18,479.81 feet to the point of beginning, **LESS AND EXCEPT** any portion of State Lease No. 560, as amended and State Lease No. 6122, as amended that may lie within the above described tract, containing approximately **1,312 acres**, all as more particularly outlined on a plat on file in the Office of Mineral Resources, Department of Natural Resources. All bearings, distances and coordinates are based on Louisiana Coordinate System of 1927, (North or South Zone), where applicable.

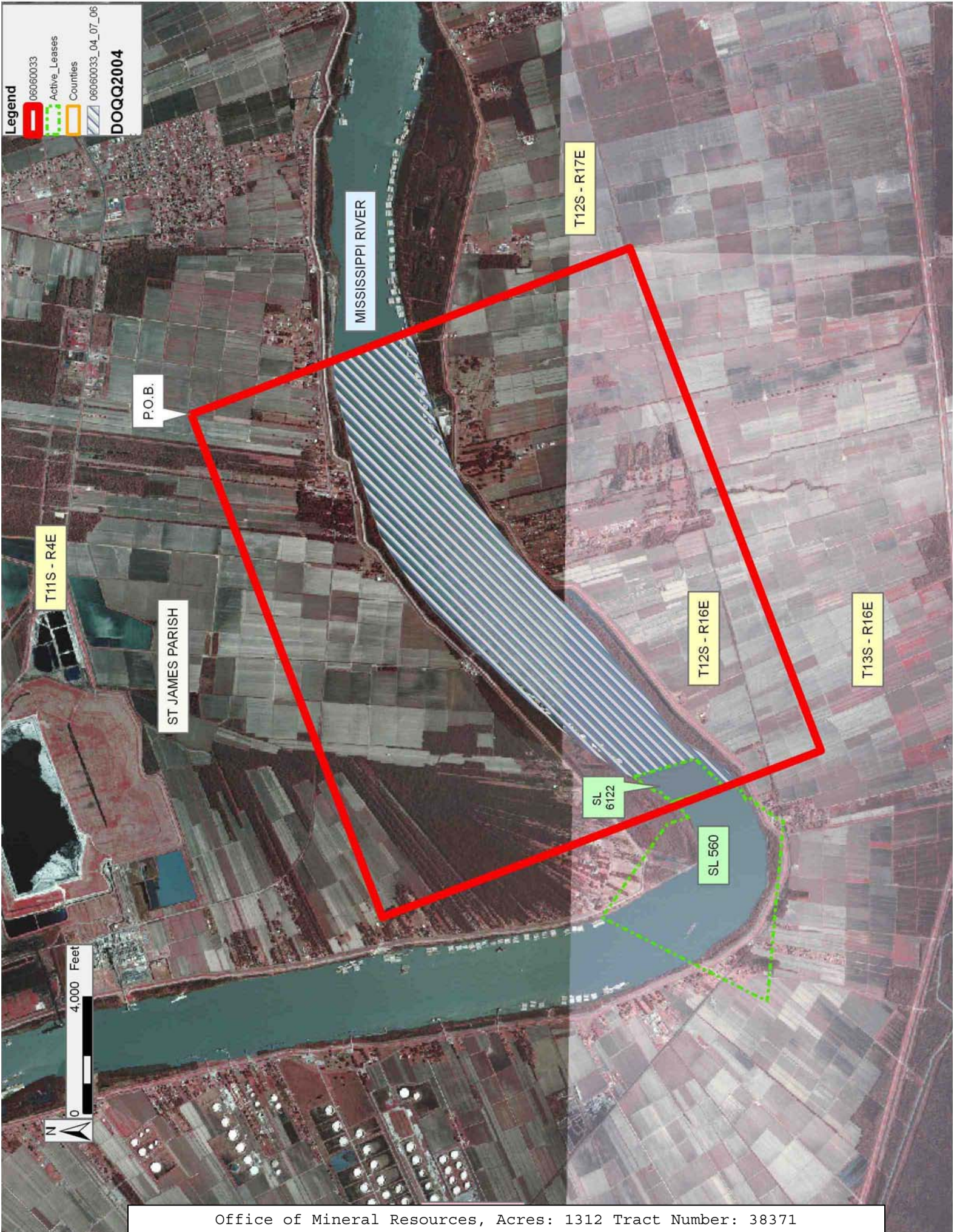
NOTE: The above description of the Tract nominated for lease has been provided and corrected, where required, exclusively by the nomination party. Any mineral lease selected from this Tract and awarded by the Louisiana State Mineral Board shall be without warranty of any kind, either express, implied, or statutory, including, but not limited to, the implied warranties of merchantability and fitness for a particular purpose. Should the mineral lease awarded by the Louisiana State Mineral Board be subsequently modified, cancelled or abrogated due to the existence of conflicting leases, operating agreements, private claims or other future obligations or conditions which may affect all or any portion of the leased Tract, it shall not relieve the Lessee of the obligation to pay any bonus due thereon to the Louisiana State Mineral Board, nor shall the Louisiana State Mineral Board be obligated to refund any consideration paid by the Lessor prior to such modification, cancellation, or abrogation, including, but not limited to, bonuses, rentals and royalties.

NOTE: The State of Louisiana does hereby reserve, and this lease shall be subject to, the imprescriptible right of surface use in the nature of a servitude in favor of the Department of Natural Resources, including its Offices and Commissions, for the sole purpose of implementing, constructing, servicing and maintaining approved coastal zone management and/or restoration projects. Utilization of any and all rights derived under this lease by the mineral lessee, its agents, successors or assigns, shall not interfere with nor hinder the reasonable surface use by the

Department of Natural Resources, its Offices or Commissions, as herein above reserved.

Applicant: PATRICK L. DONOHUE PETROLEUM PROPERTIES, INC.

Bidder	Cash Payment	Price/ Acre	Rental	Oil	Gas	Other



TRACT 38372 - Assumption and St. Martin Parishes, Louisiana

All of the lands now or formerly constituting the beds and bottoms of all water bodies of every nature and description the title of which vests in the State of Louisiana, together with all islands arising therein and other lands formed by accretion or by reliction, where allowed by law, excepting tax adjudicated lands, and not presently under mineral lease and cross hatched on June 14, 2006, situated in Assumption and St. Martin Parishes, Louisiana, and more particularly described as follows: Beginning at a point having Coordinates of X = 2,030,320.00 and Y = 476,756.90; thence East 18,480.00 feet to a point having Coordinates of X = 2,048,800.00 and Y = 476,756.90; thence South 6,156.90 feet to a point on the North boundary of State Lease No. 18743 having Coordinates of X = 2,048,800.00 and Y = 470,600.00; thence along the boundary of said State Lease No. 18743 the following courses and distances: West 2,600.00 feet to a point having Coordinates of X = 2,046,200.00 and Y = 470,600.00, South 2,675.00 feet to a point having Coordinates of X = 2,046,200.00 and Y = 467,925.00, East 100.00 feet to a point having Coordinates of X = 2,046,300.00 and Y = 467,925.00, South 2,525.00 feet to a point having Coordinates of X = 2,046,300.00 and Y = 465,400.00, East 2,500.00 feet to a point having Coordinates of X = 2,048,800.00 and Y = 465,400.00 and South 5,200.00 feet to its Southwest corner also being a point on the North boundary of State Lease No. 18744 having Coordinates of X = 2,048,800.00 and Y = 460,200.00; thence along the boundary of said State Lease No. 18744 the following courses and distances: West 2,500.00 feet to a point having Coordinates of X = 2,046,300.00 and Y = 460,200.00 and South 200.00 feet to the Northeast corner of State Lease No. 18742 having Coordinates of X = 2,046,300.00 and Y = 460,000.00; thence along the boundary of said State Lease No. 18742 the following courses and distances: West 5,500.00 feet to a point having Coordinates of X = 2,040,800.00 and Y = 460,000.00 and South 1,723.10 feet to a point having Coordinates of X = 2,040,800.00 and Y = 458,276.90; thence West 10,480.00 feet to a point having Coordinates of X = 2,030,320.00 and Y = 458,276.90; thence North 18,480.00 feet to the point of beginning, containing approximately **821 acres**, all as more particularly outlined on a plat on file in the Office of Mineral Resources, Department of Natural Resources. All bearings, distances and coordinates are based on Louisiana Coordinate System of 1927, (North or South Zone), where applicable.

NOTE: The above description of the Tract nominated for lease has been provided and corrected, where required, exclusively by the nomination party. Any mineral lease selected from this Tract and awarded by the Louisiana State Mineral Board shall be without warranty of any kind, either express, implied, or statutory, including, but not limited to, the implied warranties of merchantability and fitness for a particular purpose. Should the mineral lease awarded by the Louisiana State Mineral Board be subsequently modified, cancelled or abrogated due to the existence of conflicting leases, operating agreements, private claims or other future obligations or conditions which may affect all or any portion of the leased Tract, it shall not relieve the Lessee of the obligation to

pay any bonus due thereon to the Louisiana State Mineral Board, nor shall the Louisiana State Mineral Board be obligated to refund any consideration paid by the Lessor prior to such modification, cancellation, or abrogation, including, but not limited to, bonuses, rentals and royalties.

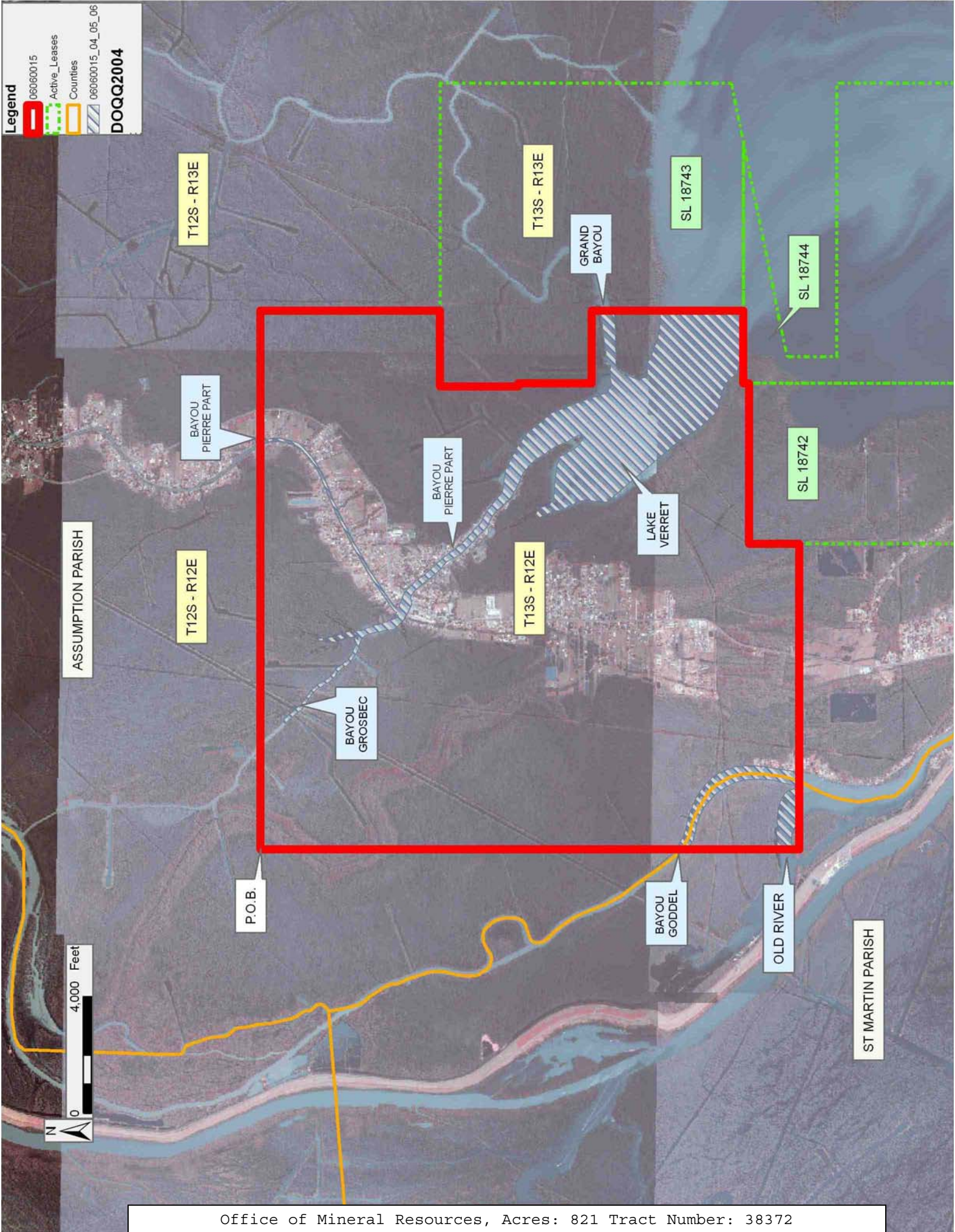
NOTE: The State of Louisiana does hereby reserve, and this lease shall be subject to, the imprescriptible right of surface use in the nature of a servitude in favor of the Department of Natural Resources, including its Offices and Commissions, for the sole purpose of implementing, constructing, servicing and maintaining approved coastal zone management and/or restoration projects. Utilization of any and all rights derived under this lease by the mineral lessee, its agents, successors or assigns, shall not interfere with nor hinder the reasonable surface use by the Department of Natural Resources, its Offices or Commissions, as herein above reserved.

Applicant: LESLIE M. COOPER

Bidder	Cash Payment	Price/ Acre	Rental	Oil	Gas	Other

Legend

- 060600015
- Active_Leases
- Counties
- 060600015_04_05_06
- DOQQ2004**



TRACT 38373 - Cameron Parish, Louisiana

All of the lands now or formerly constituting the beds and bottoms of all water bodies of every nature and description the title of which vests in the State of Louisiana, together with all islands arising therein and other lands formed by accretion or by reliction, where allowed by law, excepting tax adjudicated lands, and not presently under mineral lease and cross hatched on June 14, 2006, situated in Cameron Parish, Louisiana, and more particularly described as follows: Beginning at the Northeast corner of State Lease No. 18507 having Coordinates of X = 1,576,244.35 and Y = 460,530.86; thence West 3,577.64 feet along the North line of said State Lease No. 18507 to its Northwest corner, also being the Northeast corner of State Lease No. 18505 having Coordinates of X = 1,572,666.71 and Y = 460,530.86; thence West 7,387.14 feet along the North line of said State Lease No. 18505 to its Northwest corner having Coordinates of X = 1,565,279.57 and Y = 460,530.86; thence North 3,484.97 feet to a point having Coordinates of X = 1,565,279.57 and Y = 464,015.83; thence East 10,964.78 feet to a point having Coordinates of X = 1,576,244.35 and Y = 464,015.83; thence South 3,484.97 feet to the point of beginning, containing approximately **708 acres**, all as more particularly outlined on a plat on file in the Office of Mineral Resources, Department of Natural Resources. All bearings, distances and coordinates are based on Louisiana Coordinate System of 1927, (North or South Zone), where applicable.

NOTE: The above description of the Tract nominated for lease has been provided and corrected, where required, exclusively by the nomination party. Any mineral lease selected from this Tract and awarded by the Louisiana State Mineral Board shall be without warranty of any kind, either express, implied, or statutory, including, but not limited to, the implied warranties of merchantability and fitness for a particular purpose. Should the mineral lease awarded by the Louisiana State Mineral Board be subsequently modified, cancelled or abrogated due to the existence of conflicting leases, operating agreements, private claims or other future obligations or conditions which may affect all or any portion of the leased Tract, it shall not relieve the Lessee of the obligation to pay any bonus due thereon to the Louisiana State Mineral Board, nor shall the Louisiana State Mineral Board be obligated to refund any consideration paid by the Lessor prior to such modification, cancellation, or abrogation, including, but not limited to, bonuses, rentals and royalties.

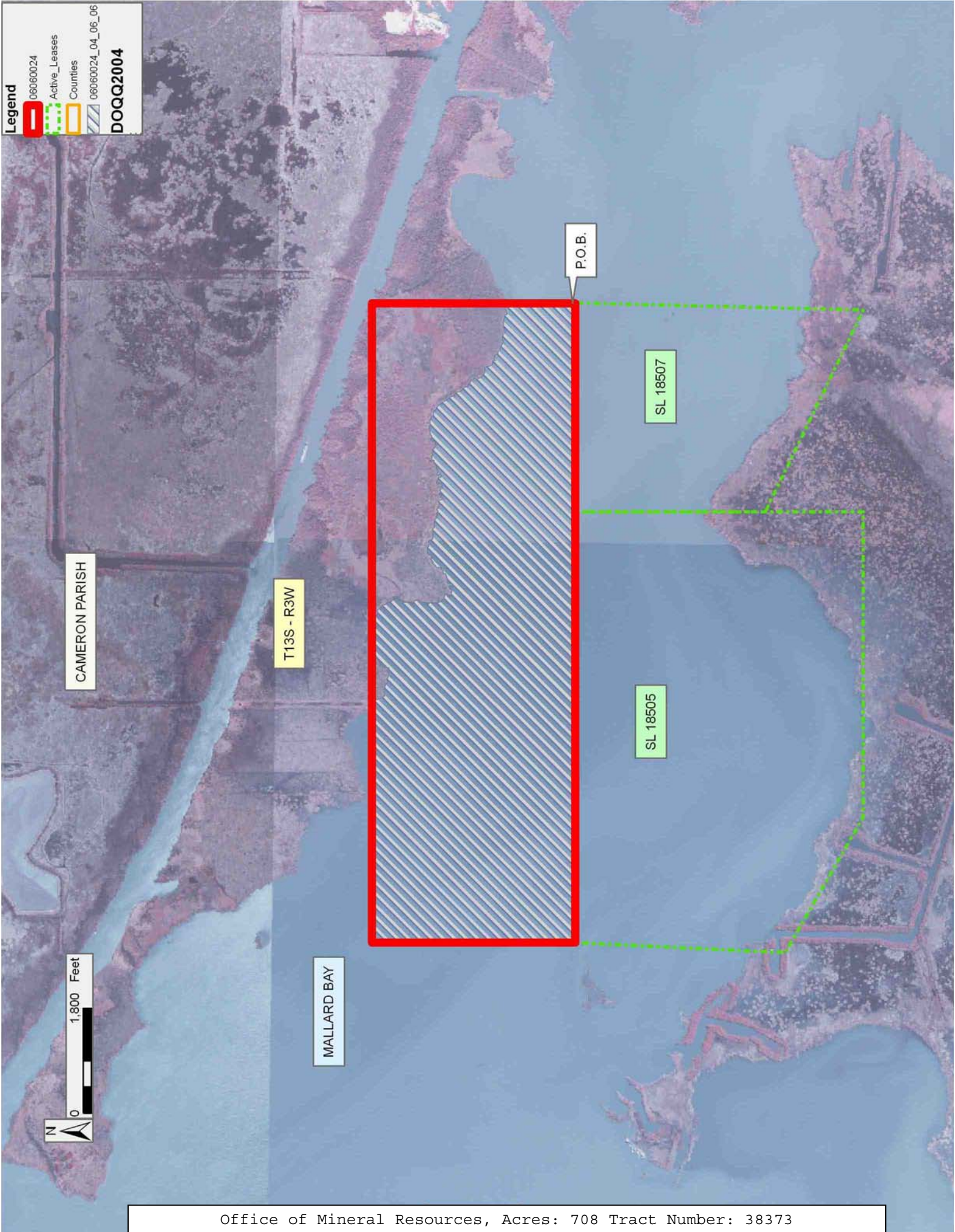
NOTE: The State of Louisiana does hereby reserve, and this lease shall be subject to, the imprescriptible right of surface use in the nature of a servitude in favor of the Department of Natural Resources, including its Offices and Commissions, for the sole purpose of implementing, constructing, servicing and maintaining approved coastal zone management and/or restoration projects. Utilization of any and all rights derived under this lease by the mineral lessee, its agents, successors or assigns, shall not interfere with nor hinder the reasonable surface use by the Department of Natural Resources, its Offices or Commissions, as herein above reserved.

Applicant: SPECTER EXPLORATION, INC.

Bidder	Cash Payment	Price/ Acre	Rental	Oil	Gas	Other

Legend

- 06060024
- Active_Leases
- Counties
- 06060024_04_06_06
- DOQQ2004**



TRACT 38374 - Cameron Parish, Louisiana

All of the lands now or formerly constituting the beds and bottoms of all water bodies of every nature and description the title of which vests in the State of Louisiana, together with all islands arising therein and other lands formed by accretion or by reliction, where allowed by law, excepting tax adjudicated lands, and not presently under mineral lease and cross hatched on June 14, 2006, situated in Cameron Parish, Louisiana, and more particularly described as follows: Beginning at a point having Coordinates of X = 1,581,957.80 and Y = 453,480.00; thence West 1,126.80 feet to the Southeast corner of State Lease No. 18506 having Coordinates of X = 1,580,831.00 and Y = 453,480.00; thence along the boundary of said State Lease No. 18506 the following courses: North 3,920.00 feet, West 3,000.00 feet and South 3,920.00 feet to its Southwest corner having Coordinates of X = 1,577,831.00 and Y = 453,480.00; thence West 1,733.19 feet to a point having Coordinates of X = 1,576,097.81 and Y = 453,480.00; thence North 00 degrees 44 minutes 50 seconds East 2,119.79 feet to the Southeast corner of State Lease No. 18507 having Coordinates of X = 1,576,125.45 and Y = 455,599.61; thence North 01 degrees 22 minutes 52 seconds East 4,932.68 feet along the East line of said State Lease No. 18507 to its Northeast corner having Coordinates of X = 1,576,244.35 and Y = 460,530.86; thence North 3,484.97 feet to a point having Coordinates of X = 1,576,244.35 and Y = 464,015.83; thence East 6,035.49 feet to a point having Coordinates of X = 1,582,279.84 and Y = 464,015.83; thence South 01 degrees 45 minutes 03 seconds West 10,540.75 feet to the point of beginning, containing approximately **641 acres**, all as more particularly outlined on a plat on file in the Office of Mineral Resources, Department of Natural Resources. All bearings, distances and coordinates are based on Louisiana Coordinate System of 1927, (North or South Zone), where applicable.

NOTE: The above description of the Tract nominated for lease has been provided and corrected, where required, exclusively by the nomination party. Any mineral lease selected from this Tract and awarded by the Louisiana State Mineral Board shall be without warranty of any kind, either express, implied, or statutory, including, but not limited to, the implied warranties of merchantability and fitness for a particular purpose. Should the mineral lease awarded by the Louisiana State Mineral Board be subsequently modified, cancelled or abrogated due to the existence of conflicting leases, operating agreements, private claims or other future obligations or conditions which may affect all or any portion of the leased Tract, it shall not relieve the Lessee of the obligation to pay any bonus due thereon to the Louisiana State Mineral Board, nor shall the Louisiana State Mineral Board be obligated to refund any consideration paid by the Lessor prior to such modification, cancellation, or abrogation, including, but not limited to, bonuses, rentals and royalties.

NOTE: The State of Louisiana does hereby reserve, and this lease shall be subject to, the imprescriptible right of surface use in the nature of a servitude in favor of the Department of Natural Resources, including its

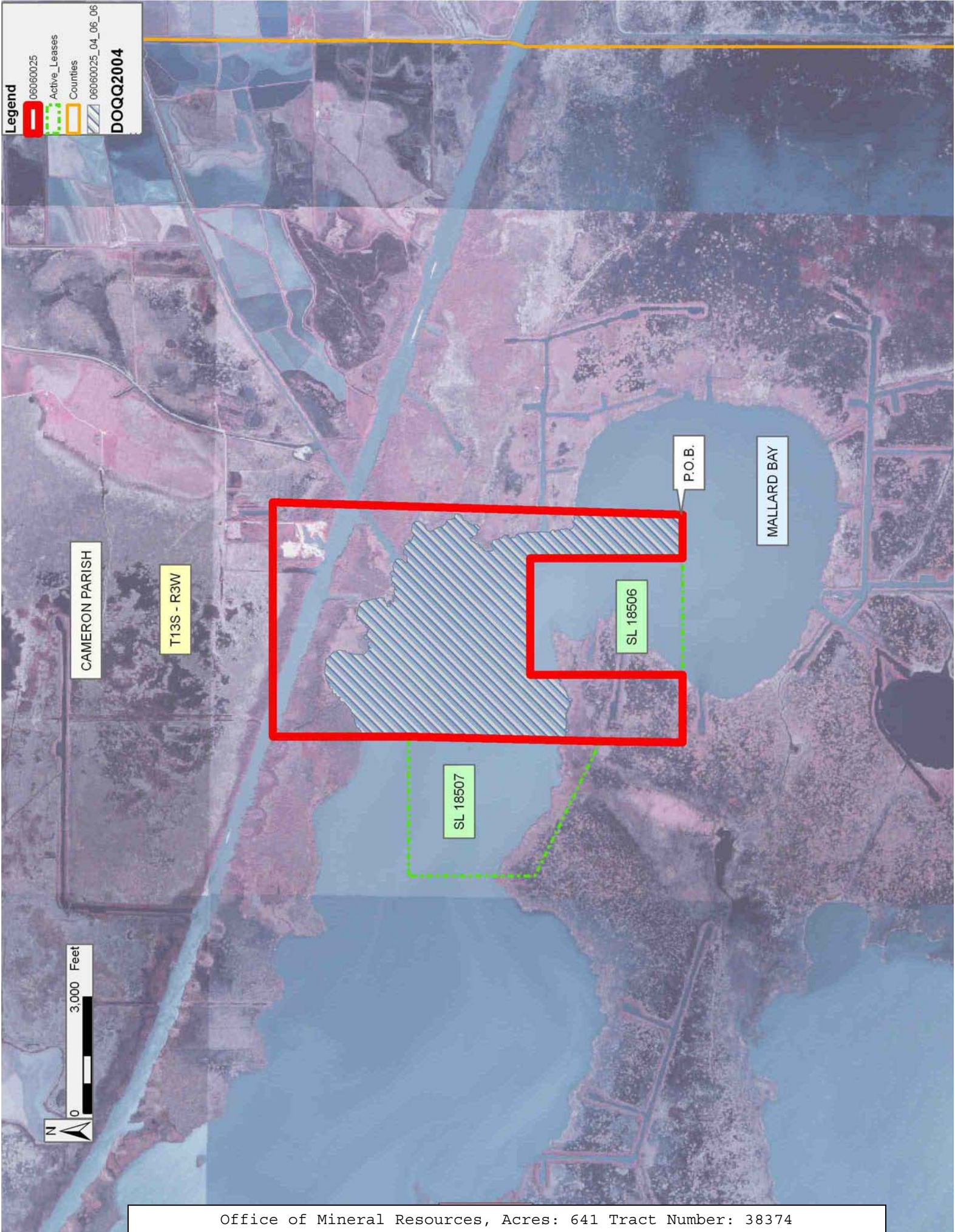
Offices and Commissions, for the sole purpose of implementing, constructing, servicing and maintaining approved coastal zone management and/or restoration projects. Utilization of any and all rights derived under this lease by the mineral lessee, its agents, successors or assigns, shall not interfere with nor hinder the reasonable surface use by the Department of Natural Resources, its Offices or Commissions, as herein above reserved.

Applicant: SPECTER EXPLORATION, INC.

Bidder	Cash Payment	Price/ Acre	Rental	Oil	Gas	Other

Legend

- 06060025
- Active_Leases
- Counties
- 06060025_04_06_06
- DOQQ2004**



TRACT 38375 - Cameron Parish, Louisiana

All of the lands now or formerly constituting the beds and bottoms of all water bodies of every nature and description the title of which vests in the State of Louisiana, together with all islands arising therein and other lands formed by accretion or by reliction, where allowed by law, excepting tax adjudicated lands, and not presently under mineral lease and cross hatched on June 14, 2006, situated in Cameron Parish, Louisiana, and more particularly described as follows: Beginning at a point having Coordinates of X = 1,581,957.80 and Y = 453,480.00; thence North 01 degrees 45 minutes 03 seconds East 10,540.75 feet to a point having Coordinates of X = 1,582,279.84 and Y = 464,015.83; thence East 5,617.77 feet to a point having Coordinates of X = 1,587,897.61 and Y = 464,015.83; thence South 01 degrees 25 minutes 27 seconds West 10,539.09 feet to a point having Coordinates of X = 1,587,635.66 and Y = 453,480.00; thence West 5,677.86 feet to the point of beginning, containing approximately **149 acres**, all as more particularly outlined on a plat on file in the Office of Mineral Resources, Department of Natural Resources. All bearings, distances and coordinates are based on Louisiana Coordinate System of 1927, (North or South Zone), where applicable.

NOTE: The above description of the Tract nominated for lease has been provided and corrected, where required, exclusively by the nomination party. Any mineral lease selected from this Tract and awarded by the Louisiana State Mineral Board shall be without warranty of any kind, either express, implied, or statutory, including, but not limited to, the implied warranties of merchantability and fitness for a particular purpose. Should the mineral lease awarded by the Louisiana State Mineral Board be subsequently modified, cancelled or abrogated due to the existence of conflicting leases, operating agreements, private claims or other future obligations or conditions which may affect all or any portion of the leased Tract, it shall not relieve the Lessee of the obligation to pay any bonus due thereon to the Louisiana State Mineral Board, nor shall the Louisiana State Mineral Board be obligated to refund any consideration paid by the Lessor prior to such modification, cancellation, or abrogation, including, but not limited to, bonuses, rentals and royalties.

NOTE: The State of Louisiana does hereby reserve, and this lease shall be subject to, the imprescriptible right of surface use in the nature of a servitude in favor of the Department of Natural Resources, including its Offices and Commissions, for the sole purpose of implementing, constructing, servicing and maintaining approved coastal zone management and/or restoration projects. Utilization of any and all rights derived under this lease by the mineral lessee, its agents, successors or assigns, shall not interfere with nor hinder the reasonable surface use by the Department of Natural Resources, its Offices or Commissions, as herein above reserved.

Applicant: SPECTER EXPLORATION, INC.

Bidder	Cash Payment	Price/ Acre	Rental	Oil	Gas	Other

Legend

06060026
 Counties
 06060026_04_06_06
 DOQQ2004

VERMILION PARISH

CAMERON PARISH

T13S - R3W



P.O.B.

MALLARD BAY



TRACT 38376 - Cameron Parish, Louisiana

All of the lands now or formerly constituting the beds and bottoms of all water bodies of every nature and description the title of which vests in the State of Louisiana, together with all islands arising therein and other lands formed by accretion or by reliction, where allowed by law, excepting tax adjudicated lands, and not presently under mineral lease and cross hatched on June 14, 2006, situated in Cameron Parish, Louisiana, and more particularly described as follows: Beginning at a point on the North line of State Lease No. 18812 having Coordinates of X = 1,575,995.82 and Y = 445,659.00; thence West 5,192.82 feet along the North line of said State Lease No. 18812 to its Northwest corner also being the Northeast corner of State Lease No. 18811 having Coordinates of X = 1,570,803.00 and Y = 445,659.00; thence West 1,638.00 feet along the North line of said State Lease No. 18811 to its Northwest corner having Coordinates of X = 1,569,165.00 and Y = 445,659.00; thence West 4,616.60 feet to a point having Coordinates of X = 1,564,548.40 and Y = 445,659.00; thence North 02 degrees 44 minutes 11 seconds East 7,889.66 feet to a point having Coordinates of X = 1,564,925.05 and Y = 453,539.67; thence South 89 degrees 41 minutes 39 seconds East 11,172.91 feet to a point having Coordinates of X = 1,576,097.81 and Y = 453,480.00; thence South 00 degrees 44 minutes 50 seconds West 7,821.66 feet to the point of beginning, containing approximately **830 acres**, all as more particularly outlined on a plat on file in the Office of Mineral Resources, Department of Natural Resources. All bearings, distances and coordinates are based on Louisiana Coordinate System of 1927, (North or South Zone), where applicable.

NOTE: The above description of the Tract nominated for lease has been provided and corrected, where required, exclusively by the nomination party. Any mineral lease selected from this Tract and awarded by the Louisiana State Mineral Board shall be without warranty of any kind, either express, implied, or statutory, including, but not limited to, the implied warranties of merchantability and fitness for a particular purpose. Should the mineral lease awarded by the Louisiana State Mineral Board be subsequently modified, cancelled or abrogated due to the existence of conflicting leases, operating agreements, private claims or other future obligations or conditions which may affect all or any portion of the leased Tract, it shall not relieve the Lessee of the obligation to pay any bonus due thereon to the Louisiana State Mineral Board, nor shall the Louisiana State Mineral Board be obligated to refund any consideration paid by the Lessor prior to such modification, cancellation, or abrogation, including, but not limited to, bonuses, rentals and royalties.

NOTE: The State of Louisiana does hereby reserve, and this lease shall be subject to, the imprescriptible right of surface use in the nature of a servitude in favor of the Department of Natural Resources, including its Offices and Commissions, for the sole purpose of implementing, constructing, servicing and maintaining approved coastal zone management and/or restoration projects. Utilization of any and all rights derived

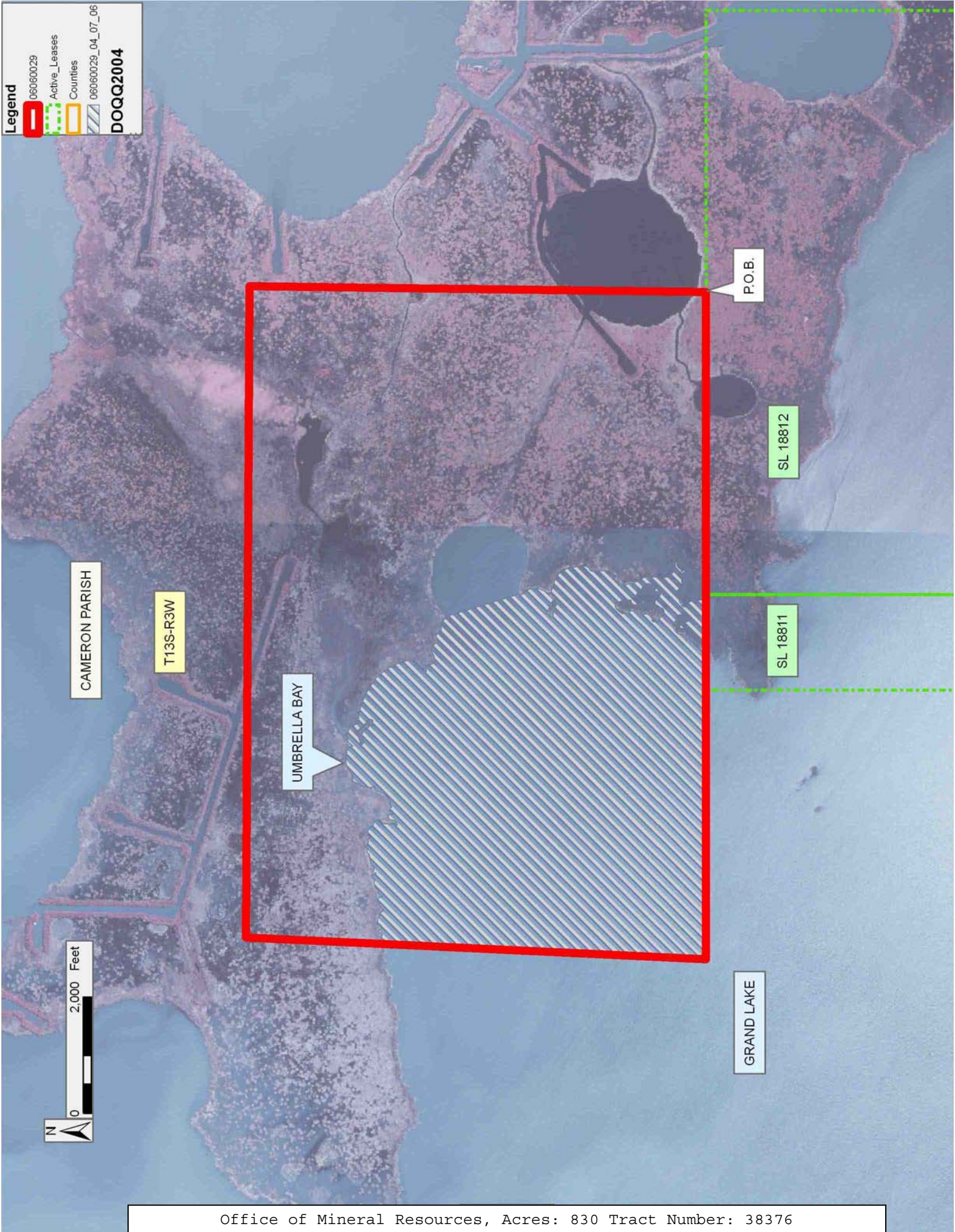
under this lease by the mineral lessee, its agents, successors or assigns, shall not interfere with nor hinder the reasonable surface use by the Department of Natural Resources, its Offices or Commissions, as herein above reserved.

Applicant: SPECTER EXPLORATION, INC.

Bidder	Cash Payment	Price/ Acre	Rental	Oil	Gas	Other

Legend

- 060600029
- Active_Leases
- Counties
- 060600029_04_07_06
- DOQQ2004**



TRACT 38377 - Cameron Parish, Louisiana

All of the lands now or formerly constituting the beds and bottoms of all water bodies of every nature and description the title of which vests in the State of Louisiana, together with all islands arising therein and other lands formed by accretion or by reliction, where allowed by law, excepting tax adjudicated lands, and not presently under mineral lease and cross hatched on June 14, 2006, situated in Cameron Parish, Louisiana, and more particularly described as follows: Beginning at a point having Coordinates of X = 1,581,957.80 and Y = 453,480.00; thence South 01 degrees 45 minutes 02 seconds West 10,566.27 feet to a point having Coordinates of X = 1,581,635.01 and Y = 442,918.66; thence North 89 degrees 30 minutes 06 seconds West 814.04 feet to a point on the East line of State Lease No. 18812 having Coordinates of X = 1,580,821.00 and Y = 442,925.74; thence North 2,733.26 feet along the East line of said State Lease No. 18812 to its Northeast corner having Coordinates of X = 1.00, 580,821.00 and Y = 445,659.00; thence West 4,825.18 feet along the North line of said State Lease No. 18812 to a point having Coordinates of X = 1,575,995.82 and Y = 445,659.00; thence North 00 degrees 44 minutes 50 seconds East 7,821.66 feet to a point having Coordinates of X = 1,576,097.81 and Y = 453,480.00; thence East 1,733.19 feet to the Southwest corner of State Lease No. 18506 having Coordinates of X = 1,577,831.00 and Y = 453,480.00; thence East 3,000.00 feet along the South line of said State Lease No. 18506 to its Southeast corner having Coordinates of X = 1,580,831.00 and Y = 453,480.00; thence East 1,126.80 feet to the point of beginning, containing approximately **334 acres**, all as more particularly outlined on a plat on file in the Office of Mineral Resources, Department of Natural Resources. All bearings, distances and coordinates are based on Louisiana Coordinate System of 1927, (North or South Zone), where applicable.

NOTE: The above description of the Tract nominated for lease has been provided and corrected, where required, exclusively by the nomination party. Any mineral lease selected from this Tract and awarded by the Louisiana State Mineral Board shall be without warranty of any kind, either express, implied, or statutory, including, but not limited to, the implied warranties of merchantability and fitness for a particular purpose. Should the mineral lease awarded by the Louisiana State Mineral Board be subsequently modified, cancelled or abrogated due to the existence of conflicting leases, operating agreements, private claims or other future obligations or conditions which may affect all or any portion of the leased Tract, it shall not relieve the Lessee of the obligation to pay any bonus due thereon to the Louisiana State Mineral Board, nor shall the Louisiana State Mineral Board be obligated to refund any consideration paid by the Lessor prior to such modification, cancellation, or abrogation, including, but not limited to, bonuses, rentals and royalties.

NOTE: The State of Louisiana does hereby reserve, and this lease shall be subject to, the imprescriptible right of surface use in the nature of a servitude in favor of the Department of Natural Resources, including its

Offices and Commissions, for the sole purpose of implementing, constructing, servicing and maintaining approved coastal zone management and/or restoration projects. Utilization of any and all rights derived under this lease by the mineral lessee, its agents, successors or assigns, shall not interfere with nor hinder the reasonable surface use by the Department of Natural Resources, its Offices or Commissions, as herein above reserved.

Applicant: SPECTER EXPLORATION, INC.

Bidder	Cash Payment	Price/ Acre	Rental	Oil	Gas	Other

Legend

- 06060028
- Active_Leases
- Counties
- 06060028_04_07_06
- DOQQ2004**



TRACT 38378 - Cameron Parish, Louisiana

All of the lands now or formerly constituting the beds and bottoms of all water bodies of every nature and description the title of which vests in the State of Louisiana, together with all islands arising therein and other lands formed by accretion or by reliction, where allowed by law, excepting tax adjudicated lands, and not presently under mineral lease and cross hatched on June 14, 2006, situated in Cameron Parish, Louisiana, and more particularly described as follows: Beginning at a point having Coordinates of X = 1,581,957.80 and Y = 453,480.00; thence East 5,677.86 to a point having Coordinates of X = 1,587,635.66 and Y = 453,480.00; thence South 01 degrees 25 minutes 27 seconds West 10,614.50 feet to a point having Coordinates of X = 1,587,371.83 and Y = 442,868.77; thence North 89 degrees 30 minutes 06 seconds West 5,737.04 feet to a point having Coordinates of X = 1,581,635.01 and Y = 442,918.66; thence North 01 degrees 45 minutes 02 seconds East 10,566.27 feet to the point of beginning, containing approximately **244 acres**, all as more particularly outlined on a plat on file in the Office of Mineral Resources, Department of Natural Resources. All bearings, distances and coordinates are based on Louisiana Coordinate System of 1927, (North or South Zone), where applicable.

NOTE: The above description of the Tract nominated for lease has been provided and corrected, where required, exclusively by the nomination party. Any mineral lease selected from this Tract and awarded by the Louisiana State Mineral Board shall be without warranty of any kind, either express, implied, or statutory, including, but not limited to, the implied warranties of merchantability and fitness for a particular purpose. Should the mineral lease awarded by the Louisiana State Mineral Board be subsequently modified, cancelled or abrogated due to the existence of conflicting leases, operating agreements, private claims or other future obligations or conditions which may affect all or any portion of the leased Tract, it shall not relieve the Lessee of the obligation to pay any bonus due thereon to the Louisiana State Mineral Board, nor shall the Louisiana State Mineral Board be obligated to refund any consideration paid by the Lessor prior to such modification, cancellation, or abrogation, including, but not limited to, bonuses, rentals and royalties.

NOTE: The State of Louisiana does hereby reserve, and this lease shall be subject to, the imprescriptible right of surface use in the nature of a servitude in favor of the Department of Natural Resources, including its Offices and Commissions, for the sole purpose of implementing, constructing, servicing and maintaining approved coastal zone management and/or restoration projects. Utilization of any and all rights derived under this lease by the mineral lessee, its agents, successors or assigns, shall not interfere with nor hinder the reasonable surface use by the Department of Natural Resources, its Offices or Commissions, as herein above reserved.

Applicant: SPECTER EXPLORATION, INC.

Bidder	Cash Payment	Price/ Acre	Rental	Oil	Gas	Other

Legend

06060027
Counties

06060027_04_06_06
DOQQ2004

VERMILION PARISH

CAMERON PARISH

T13S - R3W

P.O.B.

MALLARD BAY

