

TRACT 38359 - Caddo Parish, Louisiana

All of the lands now or formerly constituting the beds and bottoms of all water bodies of every nature and description the title of which vests in the State of Louisiana, together with all islands arising therein and other lands formed by accretion or by reliction, where allowed by law, excepting tax adjudicated lands, and not presently under mineral lease and cross hatched on June 14, 2006, situated in Caddo Parish, Louisiana, and more particularly described as follows: Beginning at a point having Coordinates of X = 1,601,059.64 and Y = 675,920.39, thence South 00 degrees 02 minutes 52 seconds East approximately 3,953 feet to a point on the Northeast Boundary of State Lease No. 12847; thence Northwesterly along said boundary of said State Lease No. 12847 to a point of intersection with a line bearing North 88 degrees 38 minutes 19 seconds West from a point having Coordinates of X = 1,601,059.64 and Y = 675,920.39; thence South 88 degrees 38 minutes 19 seconds East approximately 4892 feet to the point of beginning, the above described tract is also being that portion of the former bed of Cross Lake lying below the 172 foot contour line, **LESS AND EXCEPT** if any, that portion of State Lease No. 12847 that may lie with the above describe tract, containing approximately **139 acres**, all as more particularly outlined on a plat on file in the Office of Mineral Resources, Department of Natural Resources. All bearings, distances and coordinates are based on Louisiana Coordinate System of 1927, (North or South Zone), where applicable.

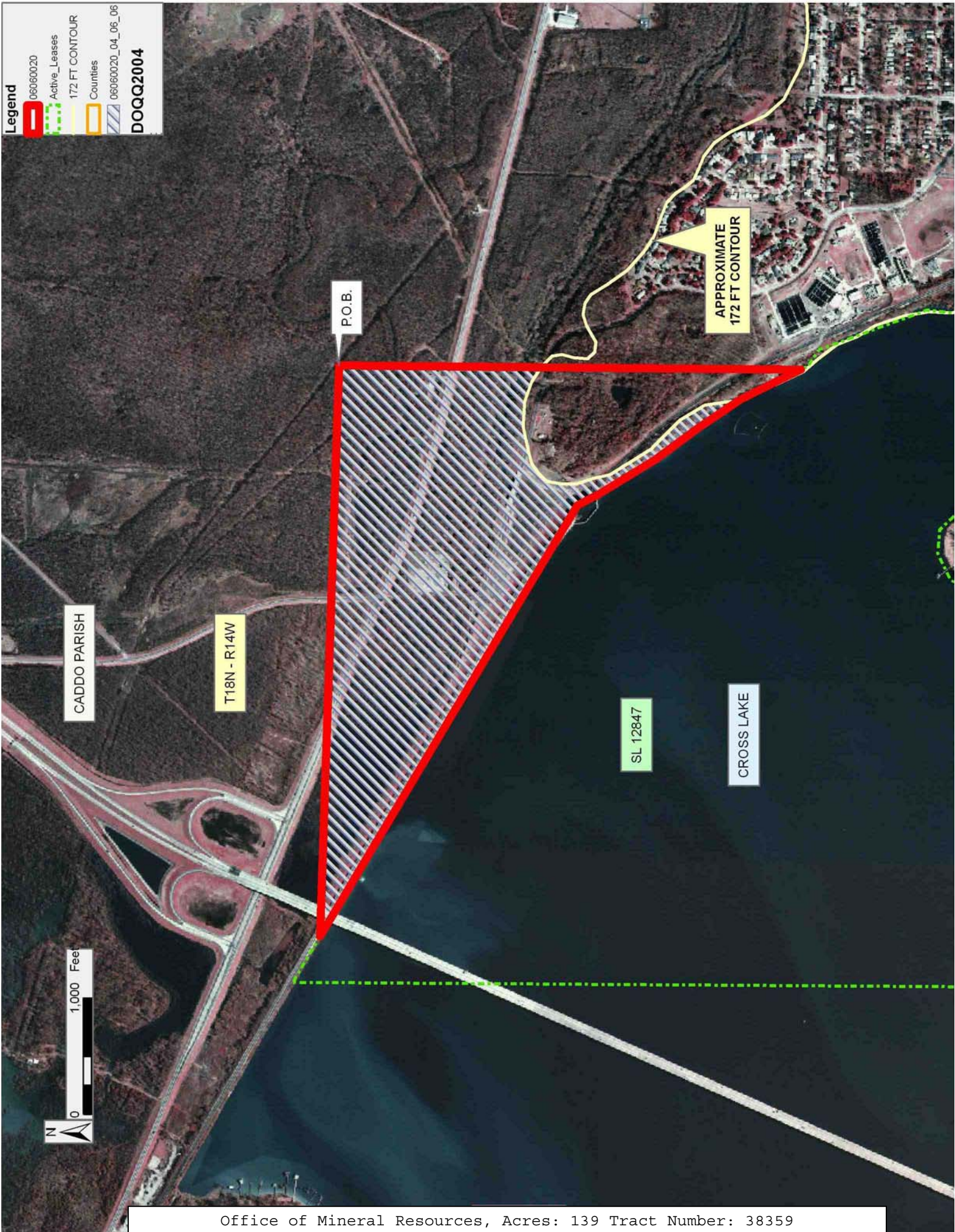
NOTE: The above description of the Tract nominated for lease has been provided and corrected, where required, exclusively by the nomination party. Any mineral lease selected from this Tract and awarded by the Louisiana State Mineral Board shall be without warranty of any kind, either express, implied, or statutory, including, but not limited to, the implied warranties of merchantability and fitness for a particular purpose. Should the mineral lease awarded by the Louisiana State Mineral Board be subsequently modified, cancelled or abrogated due to the existence of conflicting leases, operating agreements, private claims or other future obligations or conditions which may affect all or any portion of the leased Tract, it shall not relieve the Lessee of the obligation to pay any bonus due thereon to the Louisiana State Mineral Board, nor shall the Louisiana State Mineral Board be obligated to refund any consideration paid by the Lessor prior to such modification, cancellation, or abrogation, including, but not limited to, bonuses, rentals and royalties.

Bidder	Cash Payment	Price/Acre	Rental	Oil	Gas	Other

Applicant: MCGINTY-DURHAM, INC.

Legend

- 06060020
- Active_Leases
- 172 FT CONTOUR
- Counties
- 06060020_04_06_06
- DOQQ2004



TRACT 38360 - De Soto and Red River Parishes, Louisiana

All lands now or formerly constituting the beds and bottoms of water bodies of whatever description and nature owned by the State of Louisiana and located within the geographical boundaries of the Bayou Pierre WMA and not presently under mineral lease by the State of Louisiana as of June 14, 2006, the area being set forth as follows: Beginning at a point having Coordinates of X = 1,656,411.00 and Y = 562,900.00; thence East 189.00 feet to the Southwest corner of State Lease No. 18741 having Coordinates of X = 1,656,600.00 and Y = 562,900.00; thence East 2,860.00 feet along the South boundary of said State Lease No. 18741 to the Southwest Corner of State Lease No. 18764 having Coordinates of X = 1,659,460.00 and Y = 562,900.00; thence East 2,170.00 feet along the South boundary of said State Lease No. 18764 to a point having Coordinates of X = 1,661,630.00 and Y = 562,900.00; thence South 5,449.00 feet to a point having Coordinates of X = 1,661,630.00 and Y = 557,451.00; thence West 5,219.00 feet to a point having Coordinates of X = 1,656,411.00 and Y = 557,451.00; thence North 5,449.00 feet back to the point of beginning, **LESS AND EXCEPT** all that portion, if any, that lies outside of the Bayou Pierre Wildlife Management Area, containing approximately **3 acres**, all as more particularly outlined on a plat on file in the Office of Mineral Resources, Department of Natural Resources. All bearings, distances and coordinates are based on Louisiana Coordinate System of 1927, (North or South Zone).

NOTE: The above description of the Tract nominated for lease has been provided and corrected, where required, exclusively by the nomination party. Any mineral lease selected from this Tract and awarded by the Louisiana State Mineral Board shall be without warranty of any kind, either express, implied, or statutory, including, but not limited to, the implied warranties of merchantability and fitness for a particular purpose. Should the mineral lease awarded by the Louisiana State Mineral Board be subsequently modified, cancelled or abrogated due to the existence of conflicting leases, operating agreements, private claims or other future obligations or conditions which may affect all or any portion of the leased Tract, it shall not relieve the Lessee of the obligation to pay any bonus due thereon to the Louisiana State Mineral Board, nor shall the Louisiana State Mineral Board be obligated to refund any consideration paid by the Lessor prior to such modification, cancellation, or abrogation, including, but not limited to, bonuses, rentals and royalties.

NOTE: This tract is located within the boundaries of a wildlife management area or refuge and any operations conducted thereon in conjunction with this mineral lease may be subject to rules and regulations promulgated by the Department of Wildlife and Fisheries for the protection of fish, birds and other wildlife including, but not necessarily limited to, the following:

1. No activities will be allowed without written authorization from the Louisiana Department of Wildlife and Fisheries. All projects will be

coordinated and approved by the appropriate WMA Supervisor prior to any activities on the wildlife management area.

2. Proposed projects will be evaluated on a case by case basis. Modifications to proposed projects may be required including, but not limited to, access routes, spoil placement, well sites, flow lines and other appurtenant structures required by the Louisiana Department of Wildlife and Fisheries.

3. Compensatory mitigation will be required to offset unavoidable wetland impacts.

4. Removal of all structures, facilities, and equipment will be required within 120 days of abandonment unless otherwise agreed to by the Department of Wildlife and Fisheries.

5. No activities will be allowed during the hunting season unless approved by the Department.

6. Compliance with the said WMA regulations will be required unless otherwise specified by the Department.

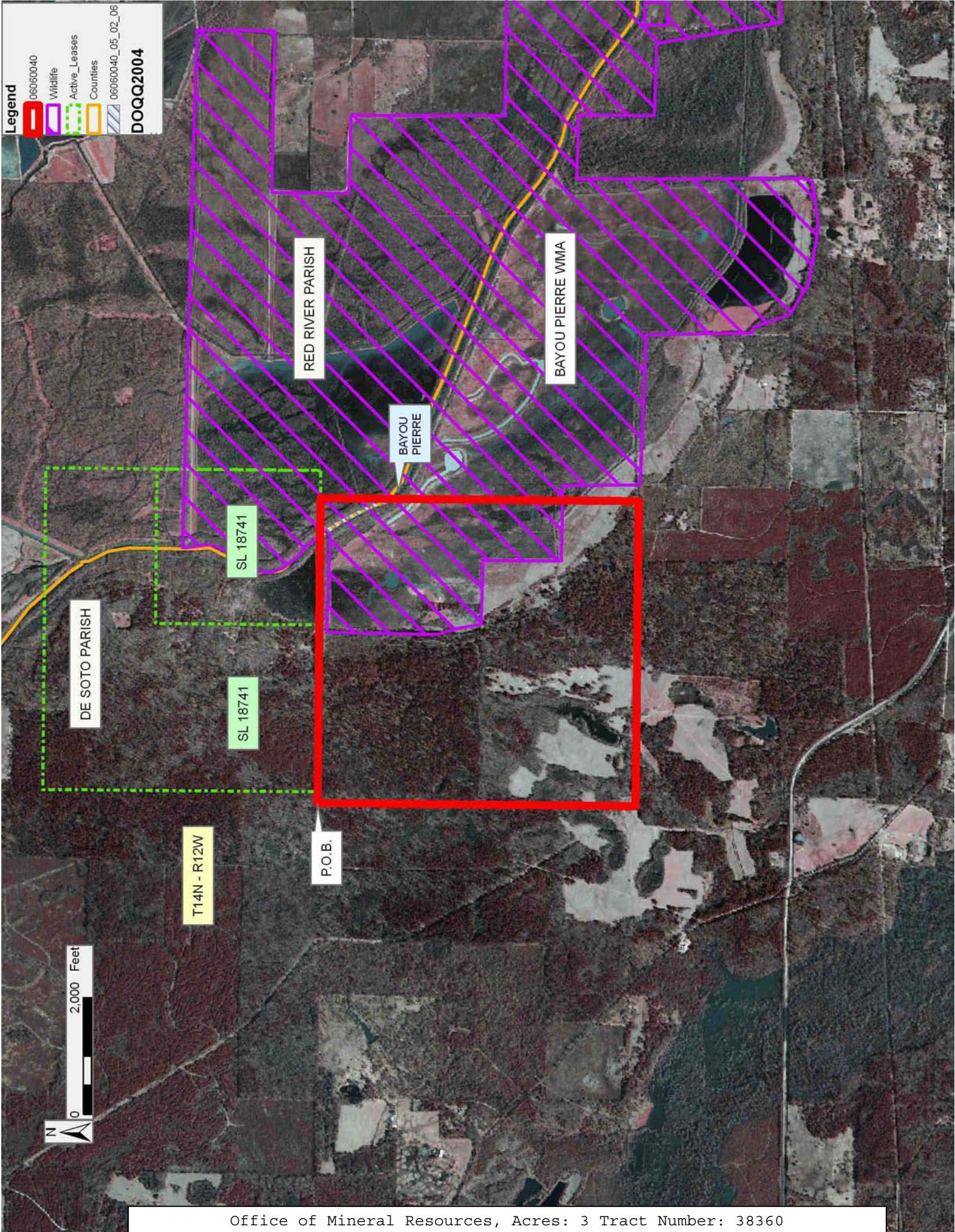
7. Prior to submitting applications for wetland permits to Federal and State permitting agencies the lease holder shall coordinate project details with the Louisiana Department of Wildlife and Fisheries, Fur and Refuge Division. Contact person for the Department will be Mike Windham at (504) 568-5886.

Applicant: WINCHESTER PRODUCTION COMPANY

Bidder	Cash Payment	Price/Acre	Rental	Oil	Gas	Other

Legend

- 06060040
- Wildlife
- Active_Leases
- Counties
- 06060040_05_02_06
- DOQQ2004**



DE SOTO PARISH

RED RIVER PARISH

BAYOU PIERRE WMA

BAYOU PIERRE

SL 18741

SL 18741

T14N - R12W

P.O.B.



TRACT 38361 - St. Landry and St. Martin Parishes, Louisiana

All of the lands now or formerly constituting the beds and bottoms of all water bodies of every nature and description the title of which vests in the State of Louisiana, together with all islands arising therein and other lands formed by accretion or by reliction, where allowed by law, excepting tax adjudicated lands, and not presently under mineral lease and cross hatched on June 14, 2006, situated in St. Landry and St. Martin Parishes, Louisiana, and more particularly described as follows: Beginning at a point having Coordinates of X = 1,802,600.00 and Y = 630,700.00; thence North 1,064.94 feet to a point on the boundary of State Lease No. 18432 having Coordinates of X = 1,802,600.00 and Y = 631,764.94; thence along the boundary of said State Lease No. 18432 the following courses and distances: South 45 degrees 00 minutes 00 seconds East 944.92 feet to a point having Coordinates of X = 1,803,268.16 and Y = 631,096.78, North 45 degrees 00 minutes 00 seconds East 1,500.00 feet to a point having Coordinates of X = 1,804,328.82 and Y = 632,157.44 and North 45 degrees 00 minutes 00 seconds West 1,332.98 feet to a point having Coordinates of X = 1,803,386.26 and Y = 633,100.00; thence East 1,913.74 feet to a point having Coordinates of X = 1,805,300.00 and Y = 633,100.00; thence South 2,400.00 feet to a point having Coordinates of X = 1,805,300.00 and Y = 630,700.00; thence West 2,700.00 feet to the point of beginning, containing approximately **2 acres**, all as more particularly outlined on a plat on file in the Office of Mineral Resources, Department of Natural Resources. All bearings, distances and coordinates are based on Louisiana Coordinate System of 1927, (North or South Zone), where applicable.

NOTE: The above description of the Tract nominated for lease has been provided and corrected, where required, exclusively by the nomination party. Any mineral lease selected from this Tract and awarded by the Louisiana State Mineral Board shall be without warranty of any kind, either express, implied, or statutory, including, but not limited to, the implied warranties of merchantability and fitness for a particular purpose. Should the mineral lease awarded by the Louisiana State Mineral Board be subsequently modified, cancelled or abrogated due to the existence of conflicting leases, operating agreements, private claims or other future obligations or conditions which may affect all or any portion of the leased Tract, it shall not relieve the Lessee of the obligation to pay any bonus due thereon to the Louisiana State Mineral Board, nor shall the Louisiana State Mineral Board be obligated to refund any consideration paid by the Lessor prior to such modification, cancellation, or abrogation, including, but not limited to, bonuses, rentals and royalties.

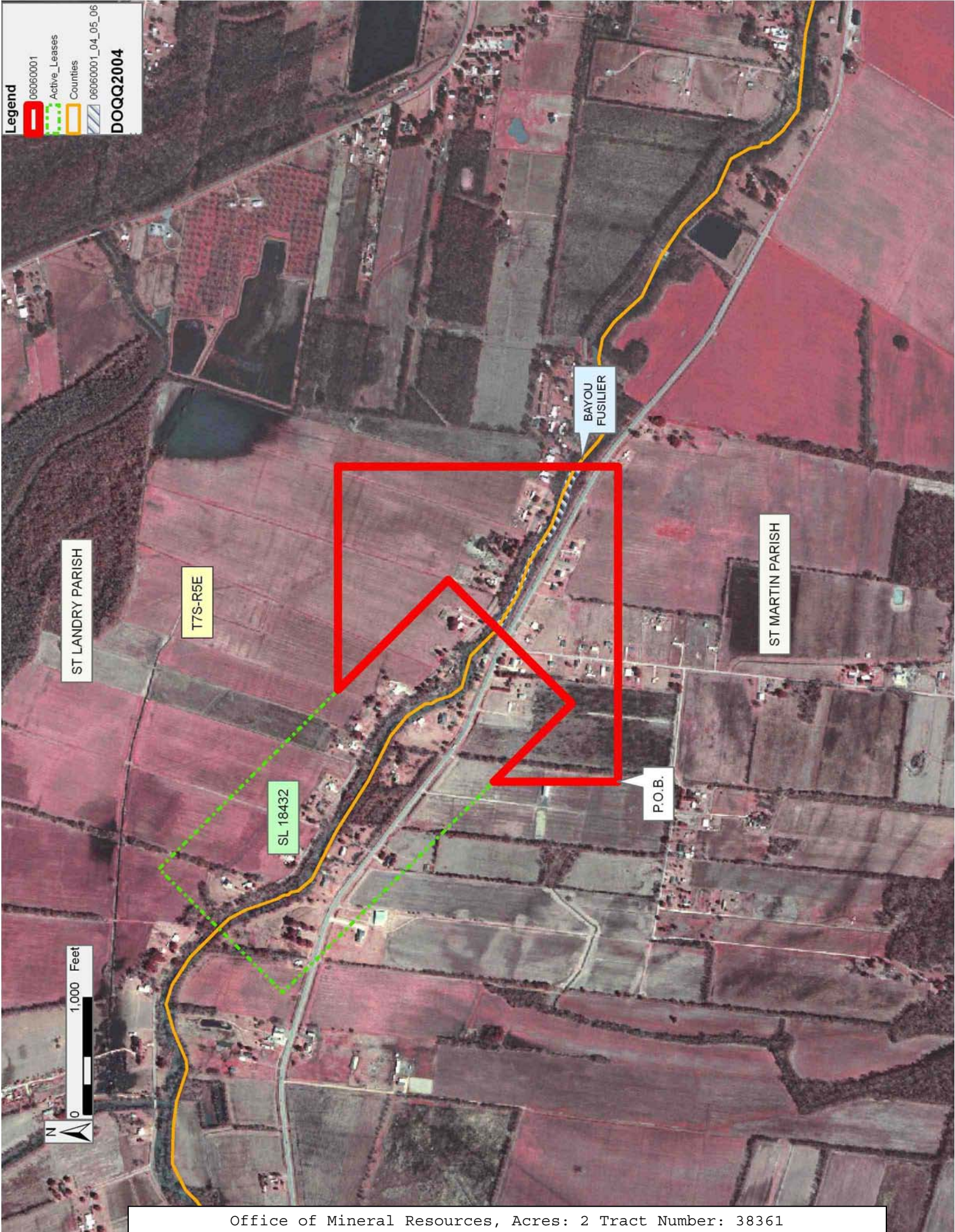
Applicant: JIL EXPLORATION, INC.

Bidder	Cash Payment	Price/Acre	Rental	Oil	Gas	Other

Legend

- 060600001
- Active_Leases
- Counties
- 060600001_04_05_06

DOQQ2004



TRACT 38362 - Calcasieu Parish, Louisiana

All of the lands now or formerly constituting the beds and bottoms of all water bodies of every nature and description the title of which vests in the State of Louisiana, together with all islands arising therein and other lands formed by accretion or by reliction, where allowed by law, excepting tax adjudicated lands, and not presently under mineral lease and cross hatched on June 14, 2006, situated in Calcasieu Parish, Louisiana, and more particularly described as follows: Beginning at a point having Coordinates of X = 1,239,412.19 and Y = 623,775.28; thence South 9,160.00 feet to a point having Coordinates of X = 1,239,412.19 and Y = 614,615.28; thence West 9,160.00 feet to a point having Coordinates of X = 1,230,252.19 and Y = 614,615.28; thence North 9,160.00 feet to a point having Coordinates of X = 1,230,252.19 and Y = 623,775.28; thence East 9,160.00 feet to the point of beginning, containing approximately **56 acres, LESS AND EXCEPT** that portion thereof, if any, located West of the boundary line between the States of Texas and Louisiana as determined by the report of the Special Master and adjudicated by the Supreme Court of the United States in litigation styled **Texas v. Louisiana, et al No. 36 Original**, or as otherwise approved by said court, all as more particularly outlined on a plat on file in the Office of Mineral Resources, Department of Natural Resources. All bearings, distances and coordinates are based on Louisiana Coordinate System of 1927, (North or South Zone), where applicable.

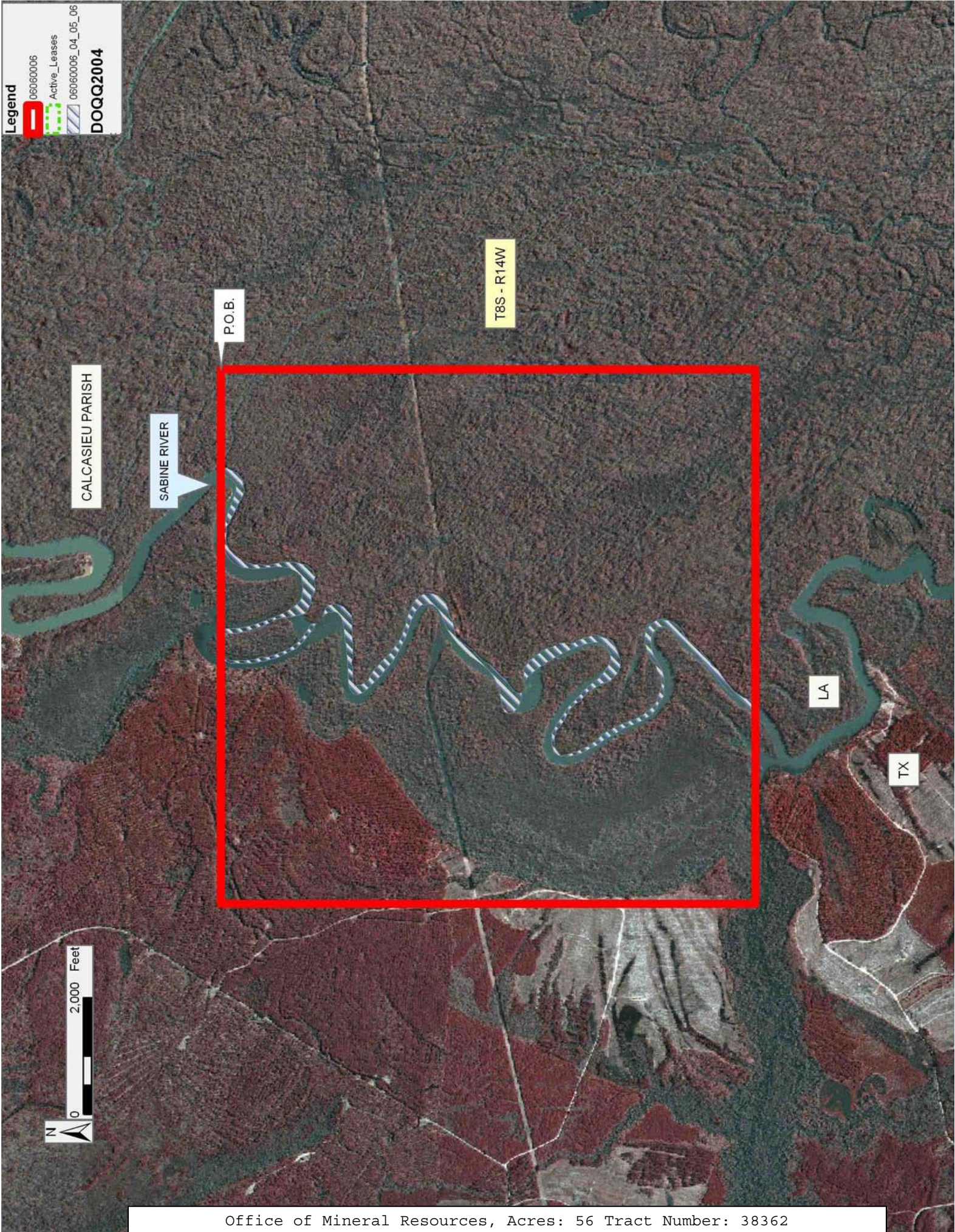
NOTE: The above description of the Tract nominated for lease has been provided and corrected, where required, exclusively by the nomination party. Any mineral lease selected from this Tract and awarded by the Louisiana State Mineral Board shall be without warranty of any kind, either express, implied, or statutory, including, but not limited to, the implied warranties of merchantability and fitness for a particular purpose. Should the mineral lease awarded by the Louisiana State Mineral Board be subsequently modified, cancelled or abrogated due to the existence of conflicting leases, operating agreements, private claims or other future obligations or conditions which may affect all or any portion of the leased Tract, it shall not relieve the Lessee of the obligation to pay any bonus due thereon to the Louisiana State Mineral Board, nor shall the Louisiana State Mineral Board be obligated to refund any consideration paid by the Lessor prior to such modification, cancellation, or abrogation, including, but not limited to, bonuses, rentals and royalties.

Applicant: CAMCON EXPLORATION INC.

Bidder	Cash Payment	Price/Acre	Rental	Oil	Gas	Other

Legend

- 06060006
- Active_Leases
- 06060006_04_05_06
- DOQQ2004**



TRACT 38363 - Calcasieu Parish, Louisiana

All of the lands now or formerly constituting the beds and bottoms of all water bodies of every nature and description the title of which vests in the State of Louisiana, together with all islands arising therein and other lands formed by accretion or by reliction, where allowed by law, excepting tax adjudicated lands, and not presently under mineral lease and cross hatched on June 14, 2006, situated in Calcasieu Parish, Louisiana, and more particularly described as follows: Beginning at a point having Coordinates of X = 1,253,600.00 and Y = 601,561.79; thence South 6,161.79 feet to a point having Coordinates of X = 1,253,600.00 and Y = 595,400.00; thence West 10,300.00 feet to a point having Coordinates of X = 1,243,300.00 and Y = 595,400.00; thence North 6,257.30 feet to a point having Coordinates of X = 1,243,300.00 and Y = 601,657.30; thence East 2,648.10 feet to the Northwest corner of State Lease No. 13420, as amended, having Coordinates of X = 1,245,948.10 and Y = 601,657.30; thence along the boundary of said State Lease No. 13420 the following courses: South 00 degrees 26 minutes 35 seconds East 429.91 feet to a point having Coordinates of X = 1,245,951.42 and Y = 601,227.40, Southeasterly along an arc to the left with a radius of 22,750.88 feet and a long chord of South 88 degrees 24 minutes 03 seconds East 1,734.26 feet to a point having Coordinates of X = 1,247,685.00 and Y = 601,179.00, Northeasterly along an arc to the left with a radius of 8,009.04 feet and a long chord of North 72 degrees 27 minutes 22 seconds East 433.16 feet to a point having Coordinates of X = 1,248,098.01 and Y = 601,309.57, Northeasterly along an arc to the left with a radius of 241,241.40 feet and a long chord of North 89 degrees 11 minutes 21 seconds East 151.93 feet to a point having Coordinates of X = 1,248,249.92 and Y = 601,311.72 and Northeasterly along an arc to the left with a radius of 2,537.89 feet and a long chord of North 73 degrees 28 minutes 47 seconds East 879.43 feet to a point having Coordinates of X = 1,249,093.05 and Y = 601,561.79; thence East 4,506.95 feet to the point of beginning, **LESS AND EXCEPT** any portion of Operating Agreement No. A0165 that may lie within the above described tract, **ALSO LESS AND EXCEPT** any portion of the Sabine Island Wildlife Management Area that may lie within the above described tract, containing approximately **66 acres**, all as more particularly outlined on a plat on file in the Office of Mineral Resources, Department of Natural Resources. All bearings, distances and coordinates are based on Louisiana Coordinate System of 1927, (North or South Zone), where applicable.

NOTE: The above description of the Tract nominated for lease has been provided and corrected, where required, exclusively by the nomination party. Any mineral lease selected from this Tract and awarded by the Louisiana State Mineral Board shall be without warranty of any kind, either express, implied, or statutory, including, but not limited to, the implied warranties of merchantability and fitness for a particular purpose. Should the mineral lease awarded by the Louisiana State Mineral Board be subsequently modified, cancelled or abrogated due to the existence of conflicting leases, operating agreements, private claims or other future obligations or conditions which may affect all or any portion

of the leased Tract, it shall not relieve the Lessee of the obligation to pay any bonus due thereon to the Louisiana State Mineral Board, nor shall the Louisiana State Mineral Board be obligated to refund any consideration paid by the Lessor prior to such modification, cancellation, or abrogation, including, but not limited to, bonuses, rentals and royalties.

NOTE: This tract is located within the boundaries of a wildlife management area or refuge and any operations conducted thereon in conjunction with this mineral lease may be subject to rules and regulations promulgated by the Department of Wildlife and Fisheries for the protection of fish, birds and other wildlife including, but not necessarily limited to, the following:

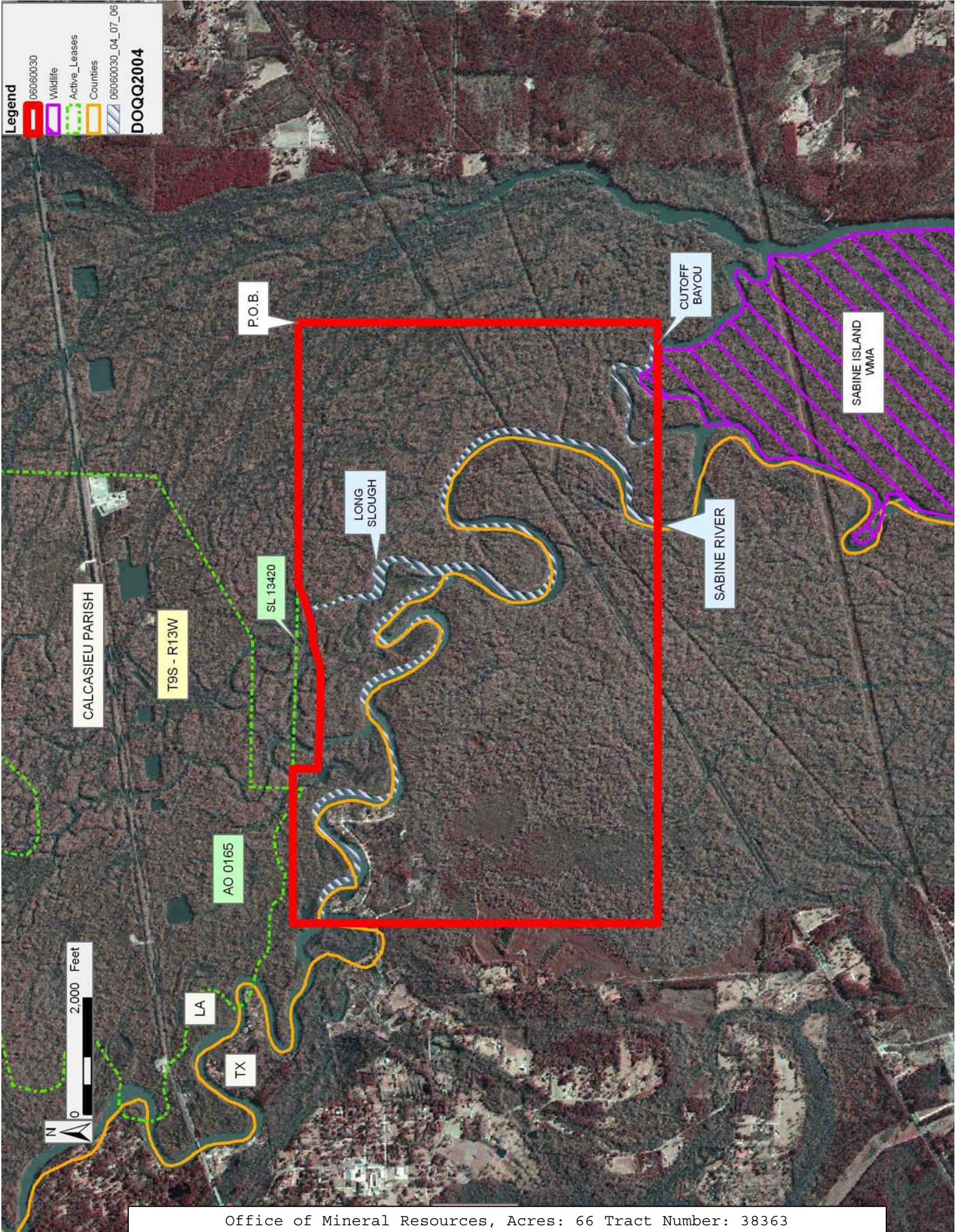
1. No activities will be allowed without written authorization from the Louisiana Department of Wildlife and Fisheries. All projects will be coordinated and approved by the appropriate WMA Supervisor prior to any activities on the wildlife management area.
2. Proposed projects will be evaluated on a case by case basis. Modifications to proposed projects may be required including, but not limited to, access routes, spoil placement, well sites, flow lines and other appurtenant structures required by the Louisiana Department of Wildlife and Fisheries.
3. Compensatory mitigation will be required to offset unavoidable wetland impacts.
4. Removal of all structures, facilities, and equipment will be required within 120 days of abandonment unless otherwise agreed to by the Department of Wildlife and Fisheries.
5. No activities will be allowed during the hunting season unless approved by the Department.
6. Compliance with the said WMA regulations will be required unless otherwise specified by the Department.
7. Prior to submitting applications for wetland permits to Federal and State permitting agencies the lease holder shall coordinate project details with the Louisiana Department of Wildlife and Fisheries, Fur and Refuge Division. Contact person for the Department will be Mike Windham at (504) 568-5886.

Applicant: DARA DOTY

Bidder	Cash Payment	Price/Acre	Rental	Oil	Gas	Other

Legend

- 06060030
- Wildlife
- Active_Leases
- Counties
- 06060030_04_07_06
- DOQQ2004



TRACT 38364 - St. Martin Parish, Louisiana





All of the lands now or formerly constituting the beds and bottoms of all water bodies of every nature and description the title of which vests in the State of Louisiana, together with all islands arising therein and other lands formed by accretion or by reliction, where allowed by law, excepting tax adjudicated lands, and not presently under mineral lease and cross hatched on June 14, 2006, situated in St. Martin Parish, Louisiana, and more particularly described as follows: Beginning at a point having Coordinates of X = 1,850,107.00 and Y = 562,965.00; thence West 18,480.00 feet to a point having Coordinates of X = 1,831,627.00 and Y = 562,965.00; thence North 7,229.00 feet to a point having Coordinates of X = 1,831,627.00 and Y = 570,194.00; thence East 18,480.00 feet to a point having Coordinates of X = 1,850,107.00 and Y = 570,194.00; South 7,229.00 feet to the point of beginning, containing approximately **55 acres**, all as more particularly outlined on a plat on file in the Office of Mineral Resources, Department of Natural Resources. All bearings, distances and coordinates are based on Louisiana Coordinate System of 1927, (North or South Zone), where applicable.

NOTE: The above description of the Tract nominated for lease has been provided and corrected, where required, exclusively by the nomination party. Any mineral lease selected from this Tract and awarded by the Louisiana State Mineral Board shall be without warranty of any kind, either express, implied, or statutory, including, but not limited to, the implied warranties of merchantability and fitness for a particular purpose. Should the mineral lease awarded by the Louisiana State Mineral Board be subsequently modified, cancelled or abrogated due to the existence of conflicting leases, operating agreements, private claims or other future obligations or conditions which may affect all or any portion of the leased Tract, it shall not relieve the Lessee of the obligation to pay any bonus due thereon to the Louisiana State Mineral Board, nor shall the Louisiana State Mineral Board be obligated to refund any consideration paid by the Lessor prior to such modification, cancellation, or abrogation, including, but not limited to, bonuses, rentals and royalties.

Applicant: APPLE ENERGY CORPS

Bidder	Cash Payment	Price/Acre	Rental	Oil	Gas	Other

Legend

-  06060007
-  Active_Leases
-  Counties
-  06060007_04_05_06

DOQQ2004

ST MARTIN PARISH

T9S - R6E

P.O.B.

BAYOU TECHE



TRACT 38365 - Ascension Parish, Louisiana

All of the lands now or formerly constituting the beds and bottoms of all water bodies of every nature and description the title of which vests in the State of Louisiana, together with all islands arising therein and other lands formed by accretion or by reliction, where allowed by law, excepting tax adjudicated lands, and not presently under mineral lease and cross hatched on June 14, 2006, situated in Ascension Parish, Louisiana, and more particularly described as follows: Beginning at a point having Coordinates of X = 2,159,000.00 and Y = 551,200.00; thence North 14,800.00 feet to a point having Coordinates of X = 2,159,000.00 and Y = 566,000.00; thence East 12,000.00 feet to a point having Coordinates of X = 2,171,000.00 and Y = 566,000.00; thence South 14,800.00 feet to a point having Coordinates of X = 2,171,000.00 and Y = 551,200.00; thence West 12,000.00 feet to the point of beginning, containing approximately **31 acres**, all as more particularly outlined on a plat on file in the Office of Mineral Resources, Department of Natural Resources. All bearings, distances and coordinates are based on Louisiana Coordinate System of 1927, (North or South Zone), where applicable.

NOTE: The above description of the Tract nominated for lease has been provided and corrected, where required, exclusively by the nomination party. Any mineral lease selected from this Tract and awarded by the Louisiana State Mineral Board shall be without warranty of any kind, either express, implied, or statutory, including, but not limited to, the implied warranties of merchantability and fitness for a particular purpose. Should the mineral lease awarded by the Louisiana State Mineral Board be subsequently modified, cancelled or abrogated due to the existence of conflicting leases, operating agreements, private claims or other future obligations or conditions which may affect all or any portion of the leased Tract, it shall not relieve the Lessee of the obligation to pay any bonus due thereon to the Louisiana State Mineral Board, nor shall the Louisiana State Mineral Board be obligated to refund any consideration paid by the Lessor prior to such modification, cancellation, or abrogation, including, but not limited to, bonuses, rentals and royalties.

NOTE: The State of Louisiana does hereby reserve, and this lease shall be subject to, the imprescriptible right of surface use in the nature of a servitude in favor of the Department of Natural Resources, including its Offices and Commissions, for the sole purpose of implementing, constructing, servicing and maintaining approved coastal zone management and/or restoration projects. Utilization of any and all rights derived under this lease by the mineral lessee, its agents, successors or assigns, shall not interfere with nor hinder the reasonable surface use by the Department of Natural Resources, its Offices or Commissions, as herein above reserved.

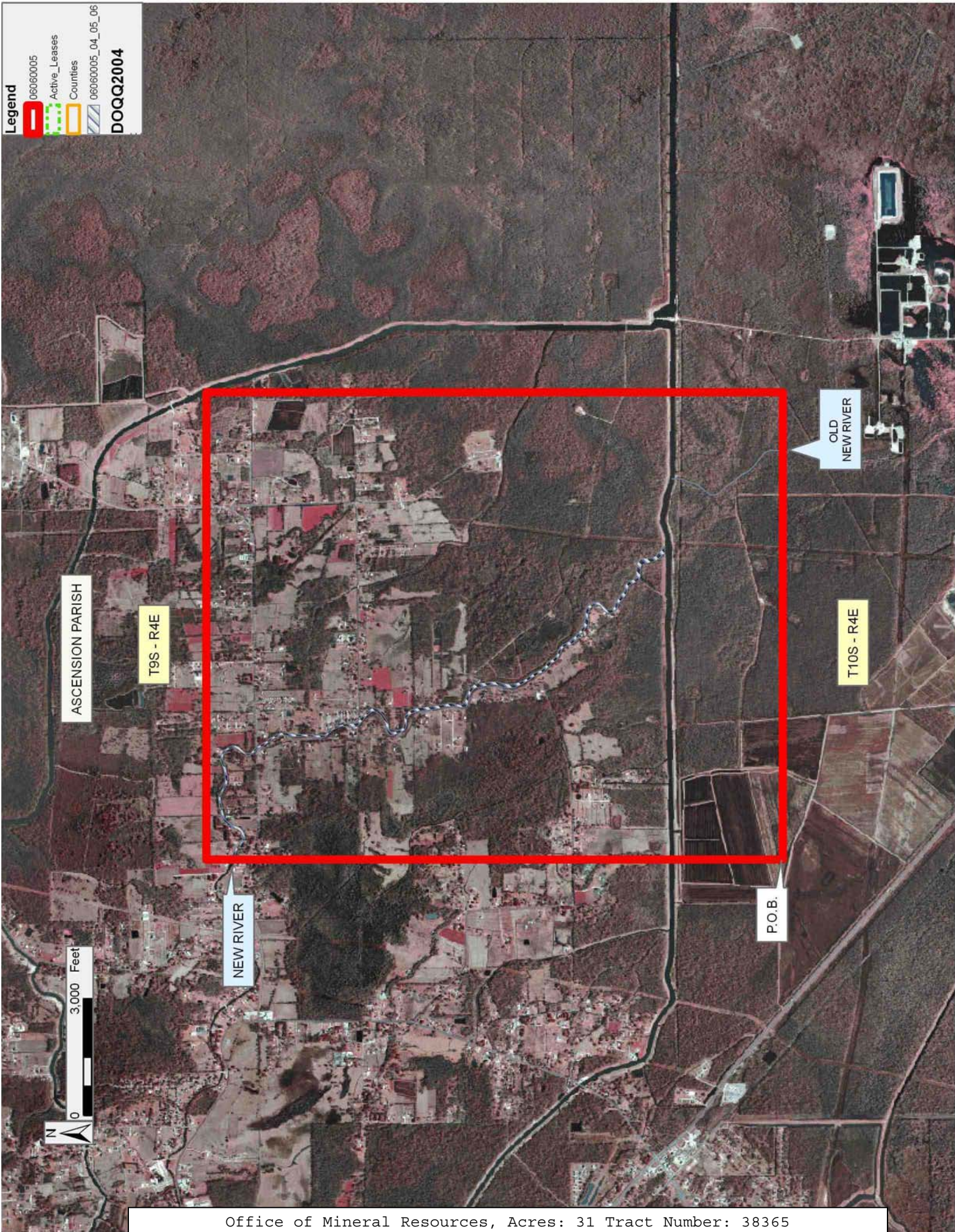
Applicant: TAYLEX, INC.

Bidder	Cash Payment	Price/Acre	Rental	Oil	Gas	Other

Legend

- 06060005
- Active_Leases
- Counties
- 06060005_04_05_06

DOQQ2004



TRACT 38366 - St. Martin Parish, Louisiana

All of the lands now or formerly constituting the beds and bottoms of all water bodies of every nature and description the title of which vests in the State of Louisiana, together with all islands arising therein and other lands formed by accretion or by reliction, where allowed by law, excepting tax adjudicated lands, and not presently under mineral lease and cross hatched on June 14, 2006, situated in St. Martin Parish, Louisiana, and more particularly described as follows: Beginning at a point having Coordinates of X = 1,850,107.00 and Y = 562,965.00; thence South 18,480.00 feet to a point having Coordinates of X = 1,850,107.00 and Y = 544,485.00; thence West 9,146.00 feet to a point having Coordinates of X = 1,840,961.00 and Y = 544,485.00; thence North 18,480.00 feet to a point having Coordinates of X = 1,840,961.00 and Y = 562,965.00; thence East 9,146.00 feet to the point of beginning, containing approximately **55 acres**, all as more particularly outlined on a plat on file in the Office of Mineral Resources, Department of Natural Resources. All bearings, distances and coordinates are based on Louisiana Coordinate System of 1927, (North or South Zone), where applicable.

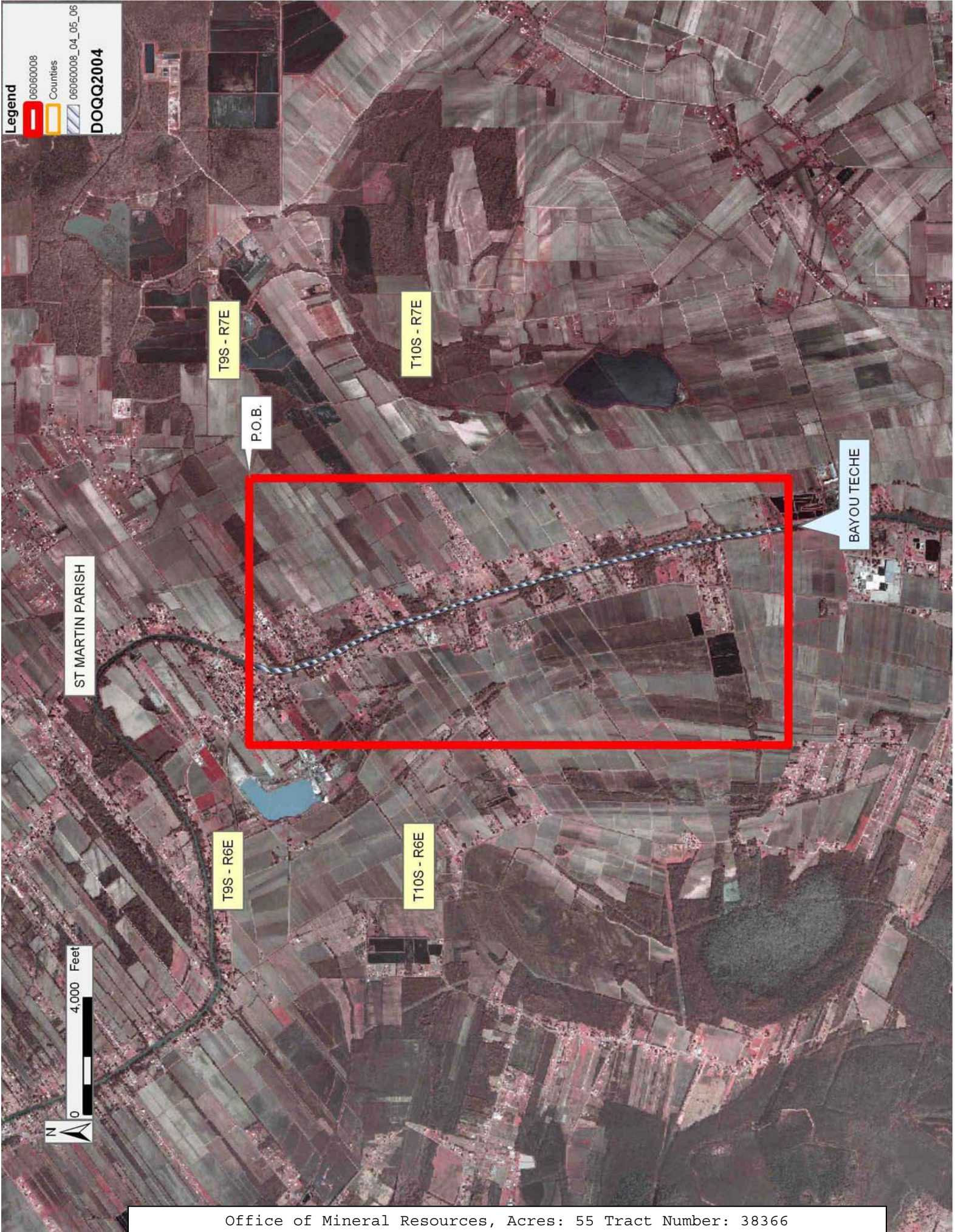
NOTE: The above description of the Tract nominated for lease has been provided and corrected, where required, exclusively by the nomination party. Any mineral lease selected from this Tract and awarded by the Louisiana State Mineral Board shall be without warranty of any kind, either express, implied, or statutory, including, but not limited to, the implied warranties of merchantability and fitness for a particular purpose. Should the mineral lease awarded by the Louisiana State Mineral Board be subsequently modified, cancelled or abrogated due to the existence of conflicting leases, operating agreements, private claims or other future obligations or conditions which may affect all or any portion of the leased Tract, it shall not relieve the Lessee of the obligation to pay any bonus due thereon to the Louisiana State Mineral Board, nor shall the Louisiana State Mineral Board be obligated to refund any consideration paid by the Lessor prior to such modification, cancellation, or abrogation, including, but not limited to, bonuses, rentals and royalties.

Applicant: APPLE ENERGY CORPS

Bidder	Cash Payment	Price/Acre	Rental	Oil	Gas	Other

Legend

- 06060008
- Counties
- 06060008_04_05_06
- DOQQ2004**



TRACT 38367 - St. James and St. John The Baptist Parishes, Louisiana

All of the lands now or formerly constituting the beds and bottoms of all water bodies of every nature and description the title of which vests in the State of Louisiana, together with all islands arising therein and other lands formed by accretion or by reliction, where allowed by law, excepting tax adjudicated lands, and not presently under mineral lease and cross hatched on June 14, 2006, situated in St. James and St. John The Baptist Parishes, Louisiana, and more particularly described as follows: Beginning at the a point having Coordinates of X = 2,195,308.00 and Y = 503,432.00; thence North 69 degrees 11 minutes 16 seconds East 18,479.81 feet to a point having Coordinates of X = 2,212,582.00 and Y = 509,998.00; thence South 20 degrees 48 minutes 39 seconds East 16,102.56 feet to a point having Coordinates of X = 2,218,303.00 and Y = 494,946.00; thence South 69 degrees 11 minutes 16 seconds West 18,479.81 feet to a point having Coordinates of X = 2,201,029.00 and Y = 488,380.00; thence North 20 degrees 48 minutes 39 seconds West 16,102.56 feet to the point of beginning, containing approximately **1,162 acres**, all as more particularly outlined on a plat on file in the Office of Mineral Resources, Department of Natural Resources. All bearings, distances and coordinates are based on Louisiana Coordinate System of 1927, (North or South Zone), where applicable.





NOTE: The above description of the Tract nominated for lease has been provided and corrected, where required, exclusively by the nomination party. Any mineral lease selected from this Tract and awarded by the Louisiana State Mineral Board shall be without warranty of any kind, either express, implied, or statutory, including, but not limited to, the implied warranties of merchantability and fitness for a particular purpose. Should the mineral lease awarded by the Louisiana State Mineral Board be subsequently modified, cancelled or abrogated due to the existence of conflicting leases, operating agreements, private claims or other future obligations or conditions which may affect all or any portion of the leased Tract, it shall not relieve the Lessee of the obligation to pay any bonus due thereon to the Louisiana State Mineral Board, nor shall the Louisiana State Mineral Board be obligated to refund any consideration paid by the Lessor prior to such modification, cancellation, or abrogation, including, but not limited to, bonuses, rentals and royalties.

NOTE: The State of Louisiana does hereby reserve, and this lease shall be subject to, the imprescriptible right of surface use in the nature of a servitude in favor of the Department of Natural Resources, including its Offices and Commissions, for the sole purpose of implementing, constructing, servicing and maintaining approved coastal zone management and/or restoration projects. Utilization of any and all rights derived under this lease by the mineral lessee, its agents, successors or assigns, shall not interfere with nor hinder the reasonable surface use by the Department of Natural Resources, its Offices or Commissions, as herein above reserved.

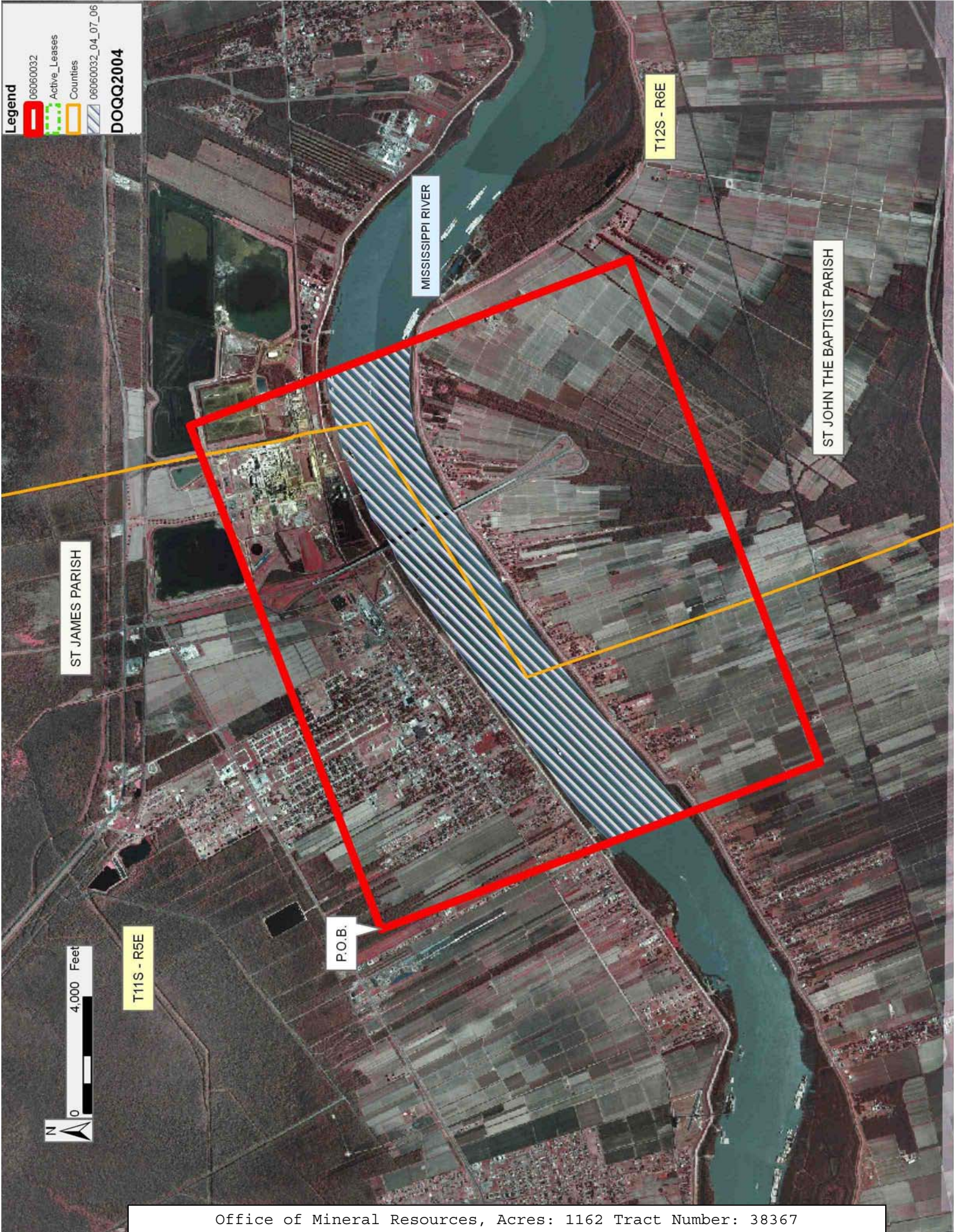
Applicant: PATRICK L. DONOHUE PETROLEUM PROPERTIES, INC.

Bidder	Cash Payment	Price/Acre	Rental	Oil	Gas	Other

Legend

-  060600032
-  Active_Leases
-  Counties
-  060600032_04_07_06

DOQQ2004



T11S - R5E

T12S - R6E

ST JAMES PARISH

MISSISSIPPI RIVER

ST JOHN THE BAPTIST PARISH

P.O.B.

TRACT 38368 - Cameron, Jefferson Davis and Vermilion Parishes, Louisiana

All of the lands now or formerly constituting the beds and bottoms of all water bodies of every nature and description the title of which vests in the State of Louisiana, together with all islands arising therein and other lands formed by accretion or by reliction, where allowed by law, excepting tax adjudicated lands, and not presently under mineral lease and cross hatched on June 14, 2006, situated in Cameron, Jefferson Davis and Vermilion Parishes, Louisiana, and more particularly described as follows: Beginning at a point having Coordinates of X = 1,550,391.35 and Y = 507,573.64; thence North 62 degrees 11 minutes 37 seconds East 9,045.71 feet to a point having Coordinates of X = 1,558,392.55 and Y = 511,793.33; thence South 14,651.55 feet to a point having Coordinates of X = 1,558,392.55 and Y = 497,141.78; thence West 4,042.01 feet to the Southeast tip of State Lease No. 13558, as amended having Coordinates of X = 1,554,350.54 and Y = 497,141.78; thence along the boundaries of said State Lease No. 13558 the following: North 4,708.22 feet to a point having Coordinates of X = 1,554,350.54 and Y = 501,850.00, West 2,547.23 feet to a point having Coordinates of X = 1,551,803.31 and Y = 501,850.00, South 57 degrees 04 minutes 29 seconds West 194.26 feet to a point having Coordinates of X = 1,551,640.26 and Y = 501,744.41, South 55 degrees 48 minutes 35 seconds West 597.82 feet to a point having Coordinates of X = 1,551,145.75 and Y = 501,408.47, South 56 degrees 57 minutes 45 seconds West 613.70 feet to a point having Coordinates of X = 1,550,631.28 and Y = 501,073.89, South 00 degrees 53 minutes 57 seconds East 1,314.76 feet to a point having Coordinates of X = 1,550,651.91 and Y = 499,759.29 and South 54 degrees 42 minutes 47 seconds East 1,227.84 feet to the Northwest corner of State Lease No. 13266, as amended having Coordinates of X = 1,551,654.16 and Y = 499,050.00; thence continue South 54 degrees 42 minutes 47 seconds East 1,053.67 feet along the southern boundary of said State Lease No. 13266 to a point having Coordinates of X = 1,552,514.24 and Y = 498,441.33; thence West 2,122.89 feet to a point having Coordinates of X = 1,550,391.35 and Y = 498,441.33; thence North 9,132.31 feet to the point of beginning, **LESS AND EXCEPT** in its entirety, State Lease No. 13759, as amended as follows: Beginning at a point having Coordinates of X = 1,554,350.54 and Y = 502,200.00; thence West 1,976.77 feet to a point having Coordinates of X = 1,552,373.77 and Y = 502,200.00; thence North 60 degrees 33 minutes 13 seconds East 136.46 feet to a point having Coordinates of X = 1,552,492.61 and Y = 502,267.09; thence North 63 degrees 36 minutes 08 seconds East 413.50 feet to a point having Coordinates of X = 1,552,862.99 and Y = 502,450.93; thence North 70 degrees 03 minutes 40 seconds East 283.74 feet to a point having Coordinates of X = 1,553,129.72 and Y = 502,547.69; thence North 74 degrees 50 minutes 51 seconds East 508.17 feet to a point having Coordinates of X = 1,553,620.22 and Y = 502,680.52; thence North 77 degrees 38 minutes 50 seconds East 405.42 feet to a point having Coordinates of X = 1,554,016.26 and Y = 502,767.25; thence North 83 degrees 07 minutes 51 seconds East 336.70 feet to a point having Coordinates of X = 1,554,350.54 and Y = 502,807.52; thence South 607.52 feet to the point of beginning; containing approximately **683.00 acres**, all

as more particularly outlined on a plat on file in the Office of Mineral Resources, Department of Natural Resources. All bearings, distances and coordinates are based on Louisiana Coordinate System of 1927, (North or South Zone), where applicable.

NOTE: The above description of the Tract nominated for lease has been provided and corrected, where required, exclusively by the nomination party. Any mineral lease selected from this Tract and awarded by the Louisiana State Mineral Board shall be without warranty of any kind, either express, implied, or statutory, including, but not limited to, the implied warranties of merchantability and fitness for a particular purpose. Should the mineral lease awarded by the Louisiana State Mineral Board be subsequently modified, cancelled or abrogated due to the existence of conflicting leases, operating agreements, private claims or other future obligations or conditions which may affect all or any portion of the leased Tract, it shall not relieve the Lessee of the obligation to pay any bonus due thereon to the Louisiana State Mineral Board, nor shall the Louisiana State Mineral Board be obligated to refund any consideration paid by the Lessor prior to such modification, cancellation, or abrogation, including, but not limited to, bonuses, rentals and royalties.

NOTE: The State of Louisiana does hereby reserve, and this lease shall be subject to, the imprescriptible right of surface use in the nature of a servitude in favor of the Department of Natural Resources, including its Offices and Commissions, for the sole purpose of implementing, constructing, servicing and maintaining approved coastal zone management and/or restoration projects. Utilization of any and all rights derived under this lease by the mineral lessee, its agents, successors or assigns, shall not interfere with nor hinder the reasonable surface use by the Department of Natural Resources, its Offices or Commissions, as herein above reserved.

Applicant: ALJ ENERGY

Bidder	Cash Payment	Price/Acre	Rental	Oil	Gas	Other

Legend

- 06060010
- Active_Leases
- Counties
- 06060010_04_05_06
- DOQQ2004**

