

TRACT 37471 - Cameron Parish, Louisiana

A portion of all State owned lands, including high and marsh lands and land now or formerly constituting the beds and bottoms of any water body, within the boundaries of the Rockefeller Wildlife Refuge and Game Preserve, not presently under mineral lease by the State of Louisiana on June 8, 2005, situated in Cameron Parish, Louisiana, and described as follows: Beginning at a point on the boundary line of the Rockefeller Wildlife Management Area and Game Preserve, as claimed by the Louisiana Department of Wildlife and Fisheries, having Coordinates of X = 1,509,516.10 and Y = 375,717.08; thence South approximately 4,812 feet to a point on the Shoreline of the Gulf of Mexico; thence Northwesterly approximately 11,219 feet along said Shoreline to its intersection with said boundary line of said Rockefeller Wildlife Management Area and Game Preserve; thence Easterly along said boundary the following courses and distances: South 88 degrees 25 minutes 40 seconds East approximately 3,179 feet; South 88 degrees 17 minutes 04 seconds East 5,341.50 feet, thence South 88 degrees 39 minutes 55 seconds East 1,466.78 feet along said boundary line of said Rockefeller Wildlife Management Area and Game Preserve to the point of beginning, **LESS AND EXCEPT** all that portion, if any, that may lie outside the Rockefeller Wildlife Management Area and Game Preserve, containing approximately **562 acres**, all as more particularly outlined on a plat on file in the Office of Mineral Resources, Department of Natural Resources. All bearings, distances and coordinates are based on Louisiana Coordinate System of 1927, (South Zone).

NOTE: The above description of the Tract nominated for lease has been provided and corrected, where required, exclusively by the nomination party. Any mineral lease selected from this Tract and awarded by the Louisiana State Mineral Board shall be without warranty of any kind, either express, implied, or statutory, including, but not limited to, the implied warranties of merchantability and fitness for a particular purpose. Should the mineral lease awarded by the Louisiana State Mineral Board be subsequently modified, cancelled or abrogated due to the existence of conflicting leases, operating agreements, private claims or other future obligations or conditions which may affect all or any portion of the leased Tract, it shall not relieve the Lessee of the obligation to pay any bonus due thereon to the Louisiana State Mineral Board, nor shall the Louisiana State Mineral Board be obligated to refund any consideration paid by the Lessor prior to such modification, cancellation, or abrogation, including, but not limited to, bonuses, rentals and royalties.

NOTE: The Office of Mineral Resources will require a minimum bonus of \$350 per acre and a minimum royalty of 25%.

NOTE: The mineral lease is located within the Rockefeller Wildlife Refuge under the jurisdiction of the Louisiana Department of Wildlife and Fisheries which has promulgated rules and regulations for the protection of game and wildlife on the aforesaid Tract and, therefore, shall be

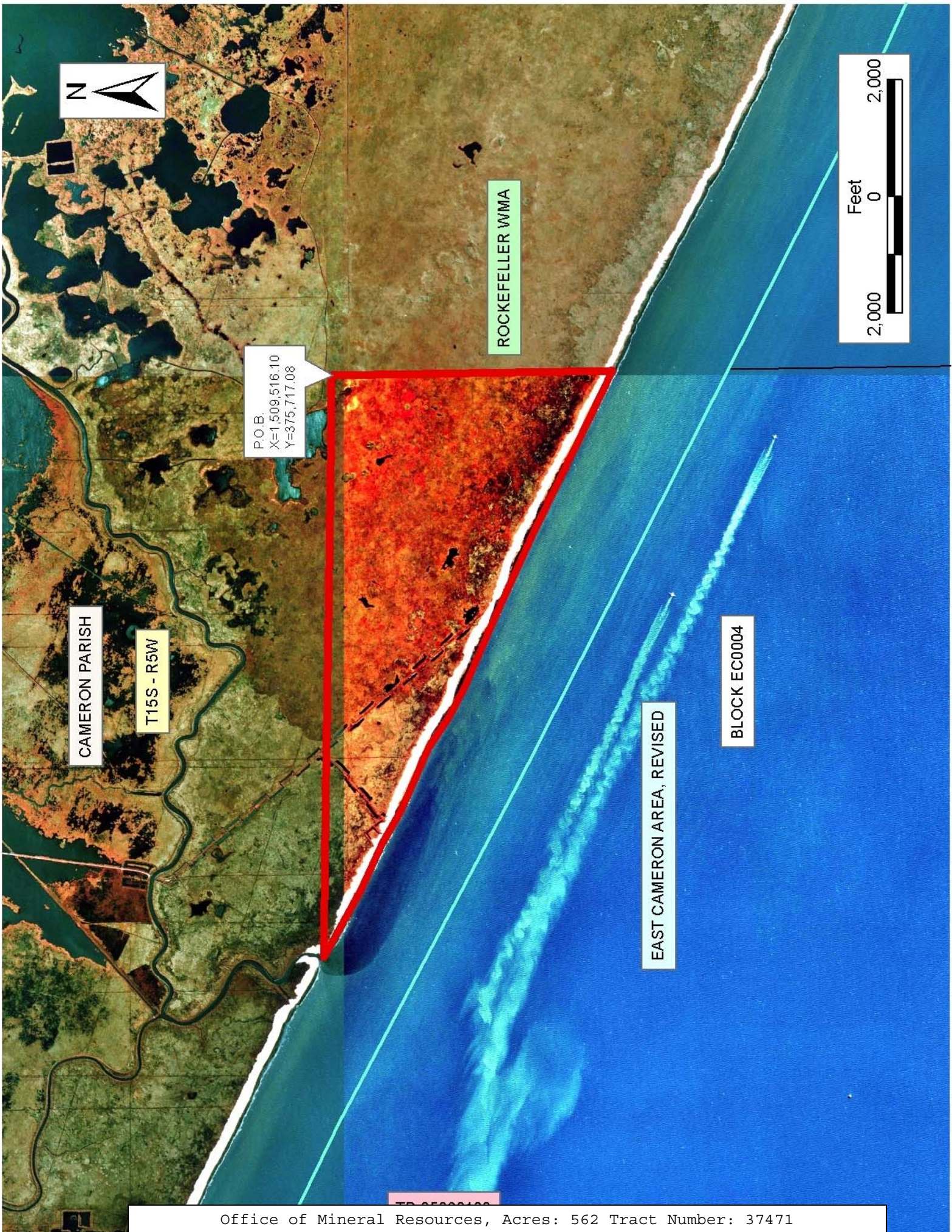
subject to said rules and regulations, a copy of which shall be attached to the mineral lease. In addition to the specific rules and regulations applicable, the following shall apply regarding operations under this mineral lease:

1. No activities will be allowed without written authorization from the Louisiana Department of Wildlife and Fisheries.
2. Projects will be evaluated on a case by case basis. Modifications to projects may be required including, but not limited to, access routes, spoil placement, well sites, flow lines and other appurtenant structures.
3. Mitigation will be required to offset avoidable wetland impacts.
4. Removal of all structures, facilities and equipment will be required within 120 days of abandonment unless otherwise agreed to by the Louisiana Department of Wildlife and Fisheries.
5. No activities will be allowed during the hunting season unless approved by the Department.
6. Compliance with the said WMA regulations will be required unless otherwise specified by the Department.
7. Prior to submitting applications for wetland permits to Federal and State permitting agencies the lease holder shall coordinate project details with the Louisiana Department of Wildlife and Fisheries, Fur and Refuge Division. Contact person for the Department will be Mike Windham at (504) 568-5886.

NOTE: The State of Louisiana does hereby reserve, and this lease shall be subject to, the imprescriptible right of surface use in the nature of a servitude in favor of the Department of Natural Resources, including its Offices and Commissions, for the sole purpose of implementing, constructing, servicing and maintaining approved coastal zone management and/or restoration projects. Utilization of any and all rights derived under this lease by the mineral lessee, its agents, successors or assigns, shall not interfere with nor hinder the reasonable surface use by the Department of Natural Resources, its Offices or Commissions, as herein above reserved.

Applicant: Juanita C. Chatelain

Bidder	Cash Payment	Price/Acre	Rental	Oil	Gas	Other



TRACT 37472 - Cameron Parish, Louisiana

A portion of all State owned lands, including high and marsh lands and land now or formerly constituting the beds and bottoms of any water body, within the boundaries of the Rockefeller Wildlife Refuge and Game Preserve, not presently under mineral lease by the State of Louisiana on June 8, 2005, situated in Cameron Parish, Louisiana, and described as follows: Beginning at a point within the Rockefeller Wildlife Management Area and Game Preserve, said point also being the Northwest corner of State Lease No. 18443, having Coordinates of X = 1,518,988.07 and Y = 375,330.77; thence South 00 degrees 45 minutes 21 seconds West 2,640.00 feet along the West line of said State Lease No. 18443 to its Southwest corner having Coordinates of X = 1,518,953.24 and Y = 372,691.00; thence South 89 degrees 17 minutes 51 seconds East 5,281.77 feet along the South line of said State Lease No. 18443 to its Southeast corner having Coordinates of X = 1,524,234.61 and Y = 372,626.24; thence South approximately 8,722 feet to a point on the current Shoreline of the Gulf of Mexico; thence Northwesterly approximately 16,318 feet along said Shoreline to the intersection of a North/South line having a Coordinate of X = 1,509,516.10; thence North approximately 4,812 feet to a point on the boundary of the Rockefeller Wildlife Management Area and Game Preserve, as claimed by the Louisiana Department of Wildlife and Fisheries, having Coordinates of X = 1,509,516.10 and Y = 375,717.08; thence along the boundary of said Wildlife Management Area the following: South 88 degrees 39 minutes 55 seconds East 4,077.50 feet to a point having Coordinates of X = 1,513,592.50 and Y = 375,622.11, South 88 degrees 43 minutes 11 seconds East 5,229.89 feet to a point having Coordinates of X = 1,518,821.08 and Y = 375,505.26 and South 88 degrees 19 minutes 15 seconds East 167.06 feet to a point having Coordinates of X = 1,518,988.07 and Y = 375,500.36; thence South 169.59 feet to the point of beginning, **LESS AND EXCEPT** all that portion, if any, that may lie outside the Rockefeller Wildlife Management Area and Game Preserve, containing approximately **2,461 acres**, all as more particularly outlined on a plat on file in the Office of Mineral Resources, Department of Natural Resources. All bearings, distances and coordinates are based on Louisiana Coordinate System of 1927, (South Zone).

NOTE: The above description of the Tract nominated for lease has been provided and corrected, where required, exclusively by the nomination party. Any mineral lease selected from this Tract and awarded by the Louisiana State Mineral Board shall be without warranty of any kind, either express, implied, or statutory, including, but not limited to, the implied warranties of merchantability and fitness for a particular purpose. Should the mineral lease awarded by the Louisiana State Mineral Board be subsequently modified, cancelled or abrogated due to the existence of conflicting leases, operating agreements, private claims or other future obligations or conditions which may affect all or any portion of the leased Tract, it shall not relieve the Lessee of the obligation to pay any bonus due thereon to the Louisiana State Mineral Board, nor shall the Louisiana State Mineral Board be obligated to refund any consideration

paid by the Lessor prior to such modification, cancellation, or abrogation, including, but not limited to, bonuses, rentals and royalties.

NOTE: The Office of Mineral Resources will require a minimum bonus of \$350 per acre and a minimum royalty of 25%.

NOTE: The mineral lease is located within the Rockefeller Wildlife Refuge under the jurisdiction of the Louisiana Department of Wildlife and Fisheries which has promulgated rules and regulations for the protection of game and wildlife on the aforesaid Tract and, therefore, shall be subject to said rules and regulations, a copy of which shall be attached to the mineral lease. In addition to the specific rules and regulations applicable, the following shall apply regarding operations under this mineral lease:

1. Compliance with the Rockefeller mineral regulations shall be required.
2. No surface activities will be allowed in the vicinity of the Headquarters and associated facilities without written authorization from the Department.
3. Board road access will be required when feasible as determined by the Department.
4. In the event that board road access is not feasible, existing canals and waterways will be utilized to access proposed well locations. A maximum of 350 feet of new canal dredging will be allowed for individual well locations.
5. Compensatory mitigation will be required for unavoidable wetland losses.
6. No discharges will be allowed, including produced waters and drilling fluids. A containerized closed loop system will be required.
7. Seasonal restrictions may be imposed within specific management units dependent upon wildlife population levels.

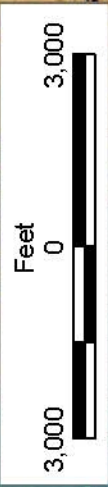
Prior to submitting applications for wetland permits to Federal and State permitting agencies, the leaseholder shall coordinate project details with the Department. Contact person for the Department will be Mike Windham at (504) 568-5886.

NOTE: The State of Louisiana does hereby reserve, and this lease shall be subject to, the imprescriptible right of surface use in the nature of a servitude in favor of the Department of Natural Resources, including its Offices and Commissions, for the sole purpose of implementing, constructing, servicing and maintaining approved coastal zone management and/or restoration projects. Utilization of any and all rights derived under this lease by the mineral lessee, its agents, successors or assigns, shall not interfere with nor hinder the reasonable surface use by the

Department of Natural Resources, its Offices or Commissions, as herein above reserved.

Applicant: Juanita C. Chatelain

Bidder	Cash Payment	Price/Acre	Rental	Oil	Gas	Other



T15S - R4W

ROCKEFELLER
WMA

CAMERON PARISH

P.O.B.
X=1,518,988.07
Y=375,330.77

SL 18443

T15S - R5W

EAST CAMERON AREA, REVISED

BLOCK EC0005

BLOCK EC0004

TRACT 37473 - Cameron Parish, Louisiana

A portion of all State owned lands, including high and marsh lands and land now or formerly constituting the beds and bottoms of any water body, within the boundaries of the Rockefeller Wildlife Refuge and Game Preserve, not presently under mineral lease by the State of Louisiana on June 8, 2005, situated in Cameron Parish, Louisiana, and described as follows: Beginning at a point within the Rockefeller Wildlife Management Area and Game Preserve having Coordinates of X = 1,570,200.00 and Y = 353,664.30; thence South approximately 10,716 feet to a point on the current Shoreline of the Gulf of Mexico; thence Northwesterly approximately 15,100 feet along the current Shoreline of the Gulf of Mexico to the intersection of a North-South line having a Coordinate of X = 1,556,065.58; thence North approximately 4,286 feet to the most Westerly Southwest corner of State Lease No. 18174 also being the Southeast corner of State Lease No. 18173, having Coordinates of X = 1,556,065.58 and Y = 352,547.82; thence along the boundary of said State Lease No. 18174 the following courses: South 47 degrees 32 minutes 38 seconds East 3,388.27 feet to a point having Coordinates of X = 1,558,565.43 and Y = 350,260.65 and North 45 degrees 29 minutes 03 seconds East 4,854.68 feet to its Northeast corner also being the Southeast corner of State Lease No. 18172, having Coordinates of X = 1,562,027.09 and Y = 353,664.30; thence East 8,172.91 feet to Point of Beginning, containing approximately **2,347 acres**, all as more particularly outlined on a plat on file in the Office of Mineral Resources, Department of Natural Resources. All bearings, distances and coordinates are based on Louisiana Coordinate System of 1927, (South Zone).

NOTE: The above description of the Tract nominated for lease has been provided and corrected, where required, exclusively by the nomination party. Any mineral lease selected from this Tract and awarded by the Louisiana State Mineral Board shall be without warranty of any kind, either express, implied, or statutory, including, but not limited to, the implied warranties of merchantability and fitness for a particular purpose. Should the mineral lease awarded by the Louisiana State Mineral Board be subsequently modified, cancelled or abrogated due to the existence of conflicting leases, operating agreements, private claims or other future obligations or conditions which may affect all or any portion of the leased Tract, it shall not relieve the Lessee of the obligation to pay any bonus due thereon to the Louisiana State Mineral Board, nor shall the Louisiana State Mineral Board be obligated to refund any consideration paid by the Lessor prior to such modification, cancellation, or abrogation, including, but not limited to, bonuses, rentals and royalties.

NOTE: The Office of Mineral Resources will require a minimum bonus of \$350 per acre and a minimum royalty of 25%.

NOTE: The mineral lease is located within the Rockefeller Wildlife Refuge under the jurisdiction of the Louisiana Department of Wildlife and Fisheries which has promulgated rules and regulations for the protection

of game and wildlife on the aforesaid Tract and, therefore, shall be subject to said rules and regulations, a copy of which shall be attached to the mineral lease. In addition to the specific rules and regulations applicable, the following shall apply regarding operations under this mineral lease:

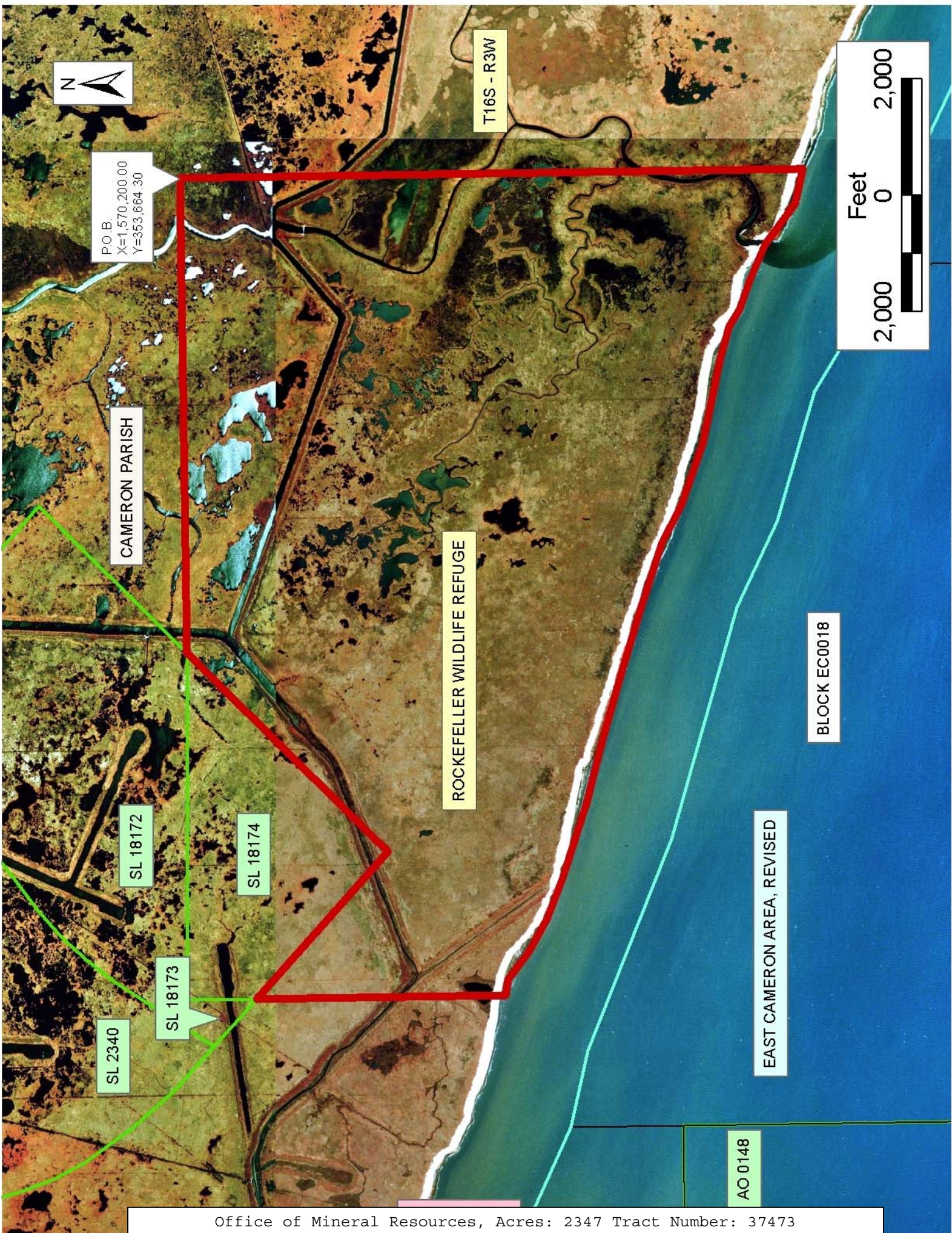
1. Compliance with the Rockefeller mineral regulations shall be required.
2. No surface activities will be allowed in the vicinity of the Headquarters and associated facilities without written authorization from the Department.
3. Board road access will be required when feasible as determined by the Department.
4. In the event that board road access is not feasible, existing canals and waterways will be utilized to access proposed well locations. A maximum of 350 feet of new canal dredging will be allowed for individual well locations.
5. Compensatory mitigation will be required for unavoidable wetland losses.
6. No discharges will be allowed, including produced waters and drilling fluids. A containerized closed loop system will be required.
7. Seasonal restrictions may be imposed within specific management units dependent upon wildlife population levels.

Prior to submitting applications for wetland permits to Federal and State permitting agencies, the leaseholder shall coordinate project details with the Department. Contact person for the Department will be Mike Windham at (504) 568-5886.

NOTE: The State of Louisiana does hereby reserve, and this lease shall be subject to, the imprescriptible right of surface use in the nature of a servitude in favor of the Department of Natural Resources, including its Offices and Commissions, for the sole purpose of implementing, constructing, servicing and maintaining approved coastal zone management and/or restoration projects. Utilization of any and all rights derived under this lease by the mineral lessee, its agents, successors or assigns, shall not interfere with nor hinder the reasonable surface use by the Department of Natural Resources, its Offices or Commissions, as herein above reserved.

Applicant: Gulf Coast Oil Properties, Inc.

Bidder	Cash Payment	Price/Acre	Rental	Oil	Gas	Other

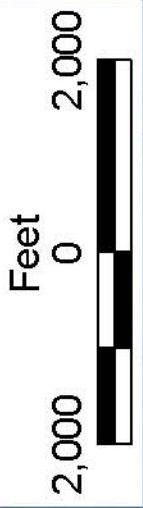


P.O. B.
X=1,570,200.00
Y=353,664.30

CAMERON PARISH

T16S - R3W

ROCKEFELLER WILDLIFE REFUGE



SL 18172

SL 18174

SL 18173

SL 2340

BLOCK EC0018

EAST CAMERON AREA, REVISED

AO 0148

TRACT 37474 - Cameron Parish, Louisiana

A portion of all State owned lands, including high and marsh lands and land now or formerly constituting the beds and bottoms of any water body, within the boundaries of the Rockefeller Wildlife Refuge and Game Preserve, not presently under mineral lease by the State of Louisiana on June 8, 2005, situated in Cameron Parish, Louisiana, and described as follows: Beginning at a point within the Rockefeller Wildlife Management Area and Game Preserve having Coordinates of X = 1,570,200.00 and Y = 353,664.30; thence East 8,300.00 feet to a point having Coordinates of X = 1,578,500.00 and Y = 353,664.30; thence South approximately 14,023 feet to a point on the current Shoreline of the Gulf of Mexico; thence Northwesterly approximately 8,980 feet along the current Shoreline of the Gulf of Mexico to the intersection of a North South line having a Coordinate of X = 1,570,200.00; thence North approximately 10,716 feet to Point of Beginning, containing approximately **2,367 acres**, all as more particularly outlined on a plat on file in the Office of Mineral Resources, Department of Natural Resources. All bearings, distances and coordinates are based on Louisiana Coordinate System of 1927, (South Zone).

NOTE: The above description of the Tract nominated for lease has been provided and corrected, where required, exclusively by the nomination party. Any mineral lease selected from this Tract and awarded by the Louisiana State Mineral Board shall be without warranty of any kind, either express, implied, or statutory, including, but not limited to, the implied warranties of merchantability and fitness for a particular purpose. Should the mineral lease awarded by the Louisiana State Mineral Board be subsequently modified, cancelled or abrogated due to the existence of conflicting leases, operating agreements, private claims or other future obligations or conditions which may affect all or any portion of the leased Tract, it shall not relieve the Lessee of the obligation to pay any bonus due thereon to the Louisiana State Mineral Board, nor shall the Louisiana State Mineral Board be obligated to refund any consideration paid by the Lessor prior to such modification, cancellation, or abrogation, including, but not limited to, bonuses, rentals and royalties.

NOTE: The Office of Mineral Resources will require a minimum bonus of \$350 per acre and a minimum royalty of 25%.

NOTE: The mineral lease is located within the Rockefeller Wildlife Refuge under the jurisdiction of the Louisiana Department of Wildlife and Fisheries which has promulgated rules and regulations for the protection of game and wildlife on the aforesaid Tract and, therefore, shall be subject to said rules and regulations, a copy of which shall be attached to the mineral lease. In addition to the specific rules and regulations applicable, the following shall apply regarding operations under this mineral lease:

1. Compliance with the Rockefeller mineral regulations shall be required.

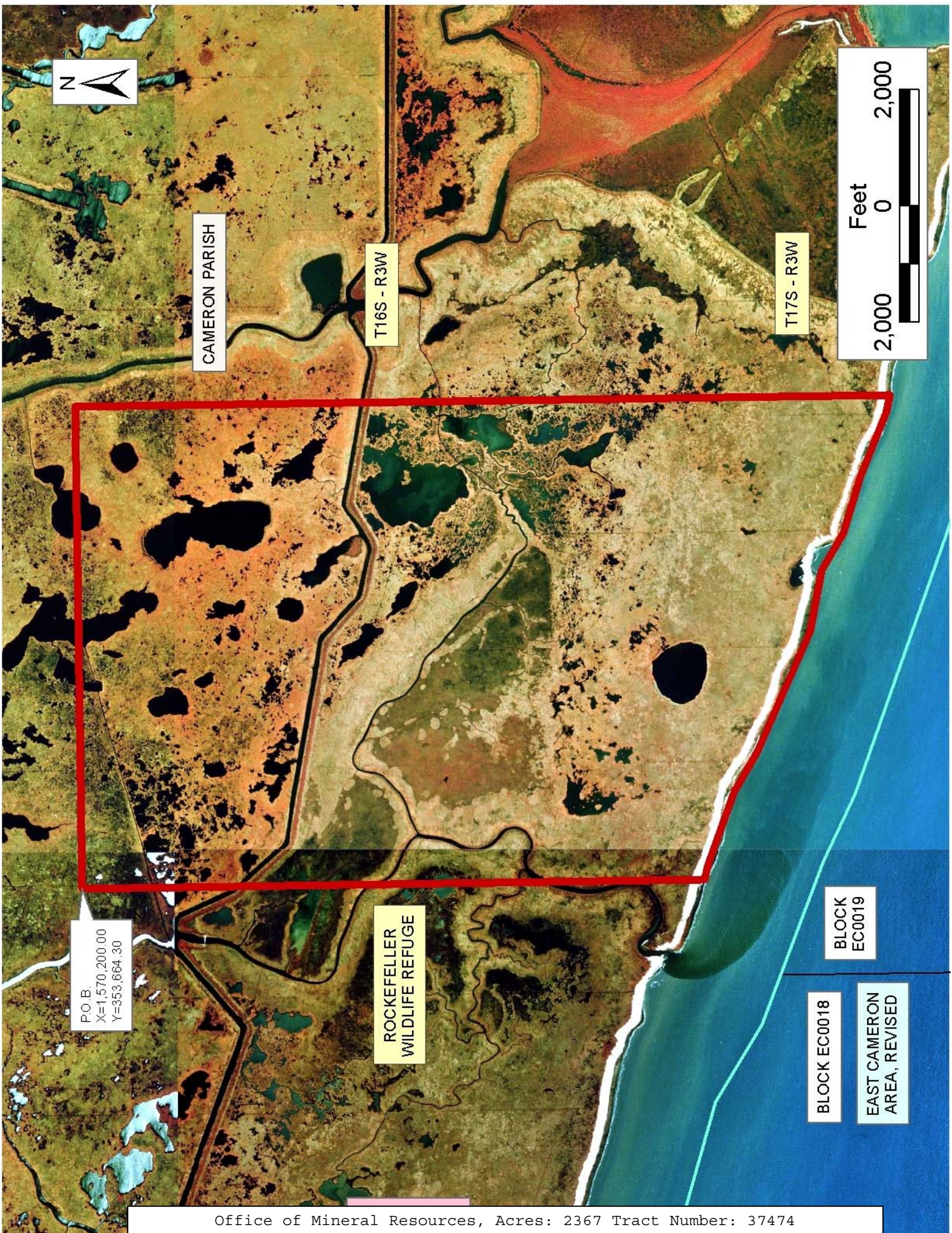
2. No surface activities will be allowed in the vicinity of the Headquarters and associated facilities without written authorization from the Department.
3. Board road access will be required when feasible as determined by the Department.
4. In the event that board road access is not feasible, existing canals and waterways will be utilized to access proposed well locations. A maximum of 350 feet of new canal dredging will be allowed for individual well locations.
5. Compensatory mitigation will be required for unavoidable wetland losses.
6. No discharges will be allowed, including produced waters and drilling fluids. A containerized closed loop system will be required.
7. Seasonal restrictions may be imposed within specific management units dependent upon wildlife population levels.

Prior to submitting applications for wetland permits to Federal and State permitting agencies, the leaseholder shall coordinate project details with the Department. Contact person for the Department will be Mike Windham at (504) 568-5886.

NOTE: The State of Louisiana does hereby reserve, and this lease shall be subject to, the imprescriptible right of surface use in the nature of a servitude in favor of the Department of Natural Resources, including its Offices and Commissions, for the sole purpose of implementing, constructing, servicing and maintaining approved coastal zone management and/or restoration projects. Utilization of any and all rights derived under this lease by the mineral lessee, its agents, successors or assigns, shall not interfere with nor hinder the reasonable surface use by the Department of Natural Resources, its Offices or Commissions, as herein above reserved.

Applicant: Gulf Coast Oil Properties, Inc.

Bidder	Cash Payment	Price/Acre	Rental	Oil	Gas	Other



CAMERON PARISH

T16S - R3W

T17S - R3W



POB
X=1,570,200.00
Y=353,664.30

ROCKEFELLER
WILDLIFE REFUGE

BLOCK
EC0019

BLOCK EC0018

EAST CAMERON
AREA, REVISED

TRACT 37475 - Cameron Parish, Louisiana

A portion of all State owned lands, including high and marsh lands and land now or formerly constituting the beds and bottoms of any water body, within the boundaries of the Rockefeller Wildlife Refuge and Game Preserve, not presently under mineral lease by the State of Louisiana on June 8, 2005, situated in Cameron Parish, Louisiana, and described as follows: Beginning at a point within the Rockefeller Wildlife Management Area and Game Preserve having Coordinates of X = 1,585,400.00 and Y = 353,664.30; thence South approximately 16,125 feet to a point on the current Shoreline of the Gulf of Mexico, or a projection thereof; thence Northwesterly approximately 7,250 feet along the current Shoreline of the Gulf of Mexico to the intersection of a North South line having a Coordinate of X = 1,578,500.00; thence North approximately 14,023 feet to a point having Coordinates of X = 1,578,500.00 and Y = 353,664.30; thence East 6,900.00 feet to the point of beginning, containing approximately **2,384 acres**, all as more particularly outlined on a plat on file in the Office of Mineral Resources, Department of Natural Resources. All bearings, distances and coordinates are based on Louisiana Coordinate System of 1927, (South Zone).

NOTE: The above description of the Tract nominated for lease has been provided and corrected, where required, exclusively by the nomination party. Any mineral lease selected from this Tract and awarded by the Louisiana State Mineral Board shall be without warranty of any kind, either express, implied, or statutory, including, but not limited to, the implied warranties of merchantability and fitness for a particular purpose. Should the mineral lease awarded by the Louisiana State Mineral Board be subsequently modified, cancelled or abrogated due to the existence of conflicting leases, operating agreements, private claims or other future obligations or conditions which may affect all or any portion of the leased Tract, it shall not relieve the Lessee of the obligation to pay any bonus due thereon to the Louisiana State Mineral Board, nor shall the Louisiana State Mineral Board be obligated to refund any consideration paid by the Lessor prior to such modification, cancellation, or abrogation, including, but not limited to, bonuses, rentals and royalties.

NOTE: The Office of Mineral Resources will require a minimum bonus of \$350 per acre and a minimum royalty of 25%.

NOTE: The mineral lease is located within the Rockefeller Wildlife Refuge under the jurisdiction of the Louisiana Department of Wildlife and Fisheries which has promulgated rules and regulations for the protection of game and wildlife on the aforesaid Tract and, therefore, shall be subject to said rules and regulations, a copy of which shall be attached to the mineral lease. In addition to the specific rules and regulations applicable, the following shall apply regarding operations under this mineral lease:

1. Compliance with the Rockefeller mineral regulations shall be required.

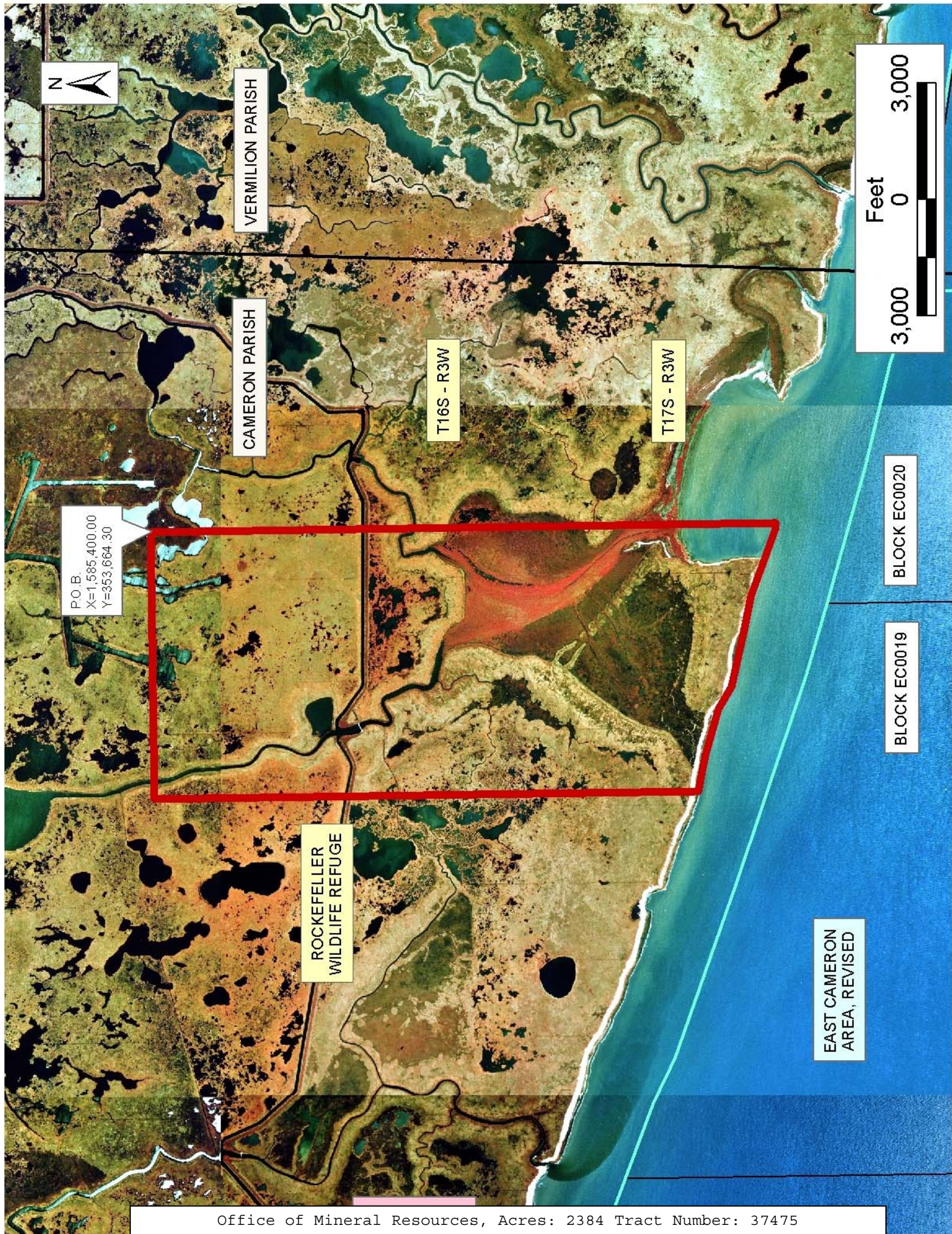
2. No surface activities will be allowed in the vicinity of the Headquarters and associated facilities without written authorization from the Department.
3. Board road access will be required when feasible as determined by the Department.
4. In the event that board road access is not feasible, existing canals and waterways will be utilized to access proposed well locations. A maximum of 350 feet of new canal dredging will be allowed for individual well locations.
5. Compensatory mitigation will be required for unavoidable wetland losses.
6. No discharges will be allowed, including produced waters and drilling fluids. A containerized closed loop system will be required.
7. Seasonal restrictions may be imposed within specific management units dependent upon wildlife population levels.

Prior to submitting applications for wetland permits to Federal and State permitting agencies, the leaseholder shall coordinate project details with the Department. Contact person for the Department will be Mike Windham at (504) 568-5886.

NOTE: The State of Louisiana does hereby reserve, and this lease shall be subject to, the imprescriptible right of surface use in the nature of a servitude in favor of the Department of Natural Resources, including its Offices and Commissions, for the sole purpose of implementing, constructing, servicing and maintaining approved coastal zone management and/or restoration projects. Utilization of any and all rights derived under this lease by the mineral lessee, its agents, successors or assigns, shall not interfere with nor hinder the reasonable surface use by the Department of Natural Resources, its Offices or Commissions, as herein above reserved.

Applicant: Gulf Coast Oil Properties, Inc.

Bidder	Cash Payment	Price/Acre	Rental	Oil	Gas	Other



TRACT 37476 - Cameron Parish, Louisiana

A portion of all State owned lands, including high and marsh lands and land now or formerly constituting the beds and bottoms of any water body, within the boundaries of the Rockefeller Wildlife Refuge and Game Preserve, not presently under mineral lease by the State of Louisiana on June 8, 2005, situated in Cameron Parish, Louisiana, and described as follows: Beginning at a point within the Rockefeller Wildlife Management Area and Game Preserve having Coordinates of X = 1,585,400.00 and Y = 353,664.30; thence East 6,000.00 feet to a point having Coordinates of X = 1,591,400.00 and Y = 353,664.30; thence South approximately 17,874 feet to a point on the current Shoreline of the Gulf of Mexico, or a projection thereof; thence Northwesterly approximately 6,483 feet along the current Shoreline of the Gulf of Mexico, or a projection thereof, to the intersection of a North South line having a Coordinate of X = 1,585,400.00; thence North approximately 16,125 feet to the point of beginning, containing approximately **2,312 acres**, all as more particularly outlined on a plat on file in the Office of Mineral Resources, Department of Natural Resources. All bearings, distances and coordinates are based on Louisiana Coordinate System of 1927, (South Zone).

NOTE: The above description of the Tract nominated for lease has been provided and corrected, where required, exclusively by the nomination party. Any mineral lease selected from this Tract and awarded by the Louisiana State Mineral Board shall be without warranty of any kind, either express, implied, or statutory, including, but not limited to, the implied warranties of merchantability and fitness for a particular purpose. Should the mineral lease awarded by the Louisiana State Mineral Board be subsequently modified, cancelled or abrogated due to the existence of conflicting leases, operating agreements, private claims or other future obligations or conditions which may affect all or any portion of the leased Tract, it shall not relieve the Lessee of the obligation to pay any bonus due thereon to the Louisiana State Mineral Board, nor shall the Louisiana State Mineral Board be obligated to refund any consideration paid by the Lessor prior to such modification, cancellation, or abrogation, including, but not limited to, bonuses, rentals and royalties.

NOTE: The Office of Mineral Resources will require a minimum bonus of \$350 per acre and a minimum royalty of 25%.

NOTE: The mineral lease is located within the Rockefeller Wildlife Refuge under the jurisdiction of the Louisiana Department of Wildlife and Fisheries which has promulgated rules and regulations for the protection of game and wildlife on the aforesaid Tract and, therefore, shall be subject to said rules and regulations, a copy of which shall be attached to the mineral lease. In addition to the specific rules and regulations applicable, the following shall apply regarding operations under this mineral lease:

1. Compliance with the Rockefeller mineral regulations shall be required.

2. No surface activities will be allowed in the vicinity of the Headquarters and associated facilities without written authorization from the Department.
3. Board road access will be required when feasible as determined by the Department.
4. In the event that board road access is not feasible, existing canals and waterways will be utilized to access proposed well locations. A maximum of 350 feet of new canal dredging will be allowed for individual well locations.
5. Compensatory mitigation will be required for unavoidable wetland losses.
6. No discharges will be allowed, including produced waters and drilling fluids. A containerized closed loop system will be required.
7. Seasonal restrictions may be imposed within specific management units dependent upon wildlife population levels.

Prior to submitting applications for wetland permits to Federal and State permitting agencies, the leaseholder shall coordinate project details with the Department. Contact person for the Department will be Mike Windham at (504) 568-5886.

NOTE: The State of Louisiana does hereby reserve, and this lease shall be subject to, the imprescriptible right of surface use in the nature of a servitude in favor of the Department of Natural Resources, including its Offices and Commissions, for the sole purpose of implementing, constructing, servicing and maintaining approved coastal zone management and/or restoration projects. Utilization of any and all rights derived under this lease by the mineral lessee, its agents, successors or assigns, shall not interfere with nor hinder the reasonable surface use by the Department of Natural Resources, its Offices or Commissions, as herein above reserved.

Applicant: Gulf Coast Oil Properties, Inc.

Bidder	Cash Payment	Price/Acre	Rental	Oil	Gas	Other



VERMILION PARISH



P.O. B.
X=1,585,400.00
Y=353,664.30

CAMERON PARISH

ROCKEFELLER
WILDLIFE REFUGE

T16S - R3W

T17S - R3W

BLOCK EC0020

BLOCK EC0019

EAST CAMERON
AREA, REVISED