

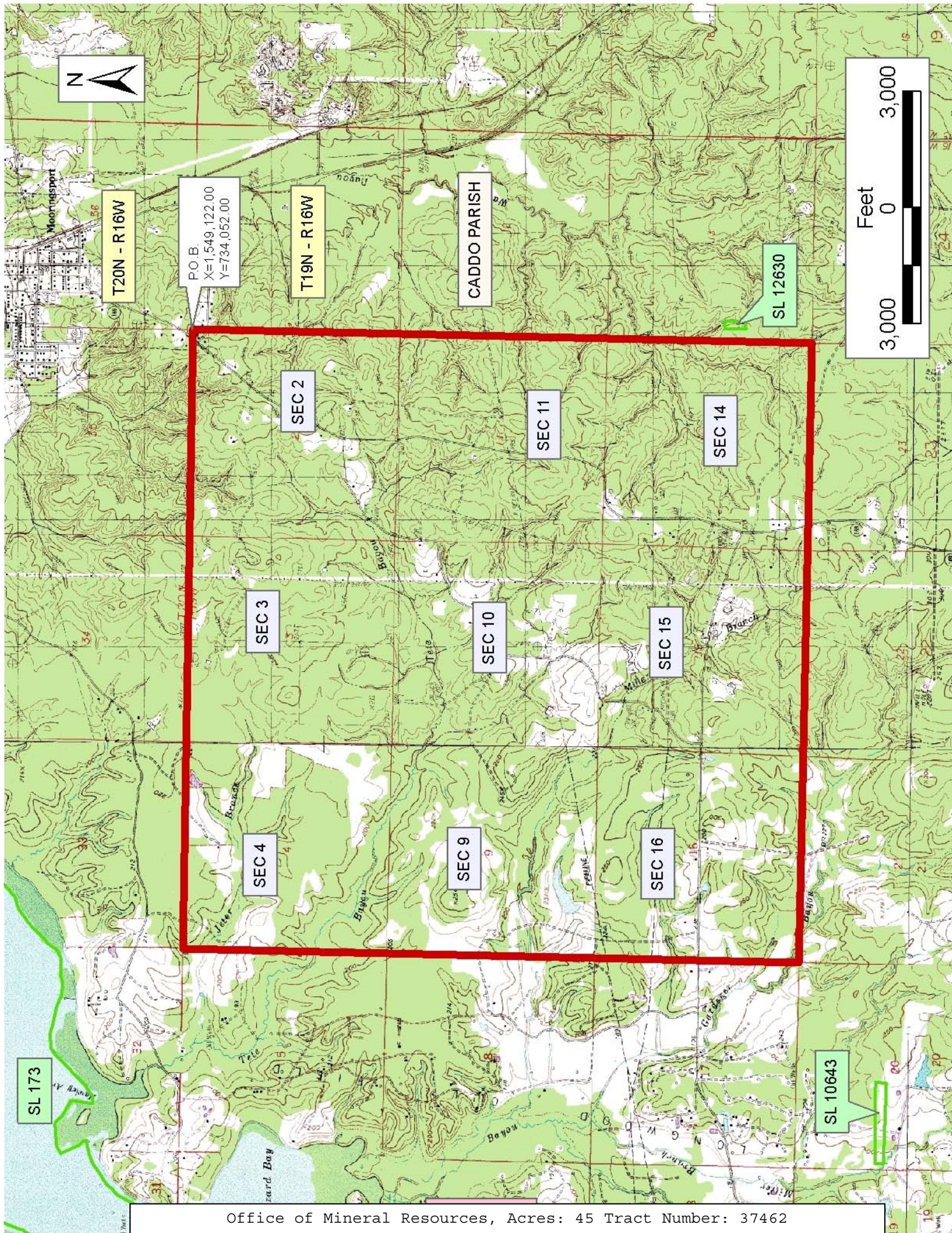
TRACT 37462 - Caddo Parish, Louisiana

A certain Tract of land, excluding the beds and bottoms of all navigable waters, belonging to and not presently under mineral lease from Caddo Parish Commission on June 8, 2005, being more fully described as follows: All of the rights, title and interest in any highways, right-of-ways, roads, or other lands owned by and not presently under mineral lease from the Caddo Parish Commission, situated in Sections 2, 3, 4, 9, 10, 11, 14, 15, and 16, Township 19 North, Range 16 West, Caddo Parish, Louisiana and being located within the following described boundaries: Beginning at a point having Coordinates of X = 1,549,122.00 and Y = 734,052.00; thence South 01 degrees 31 minutes 58 seconds West 16,001.72 feet to a point having Coordinates of X = 1,548,694.00 and Y = 718,056.00; thence North 88 degrees 31 minutes 37 seconds West 16,027.30 feet to a point having Coordinates of X = 1,532,672.00 and Y = 718,468.00; thence North 01 degrees 35 minutes 52 seconds East 15,924.19 feet to a point having Coordinates of X = 1,533,116.00 and Y = 734,386.00; thence South 88 degrees 48 minutes 17 seconds East 16,009.48 feet to the point of beginning, containing approximately **45 acres**, all as more particularly outlined on a plat on file in the Office of Mineral Resources, Department of Natural Resources. The description is based on information provided by the State Agency regarding location and ownership of surface and mineral rights. All bearings, distances and coordinates, if applicable, are based on Louisiana Coordinate System of 1927, (North or South Zone).

NOTE: The above description of the Tract nominated for lease has been provided and corrected, where required, exclusively by the nomination party. Any mineral lease selected from this Tract and awarded by the Louisiana State Mineral Board shall be without warranty of any kind, either express, implied, or statutory, including, but not limited to, the implied warranties of merchantability and fitness for a particular purpose. Should the mineral lease awarded by the Louisiana State Mineral Board be subsequently modified, cancelled or abrogated due to the existence of conflicting leases, operating agreements, private claims or other future obligations or conditions which may affect all or any portion of the leased Tract, it shall not relieve the Lessee of the obligation to pay any bonus due thereon to the Louisiana State Mineral Board, nor shall the Louisiana State Mineral Board be obligated to refund any consideration paid by the Lessor prior to such modification, cancellation, or abrogation, including, but not limited to, bonuses, rentals and royalties.

Bidder	Cash Payment	Price/ Acre	Rental	Oil	Gas	Other

Applicant: Colorado, Shine & Company to Agency and by Resolution from the Caddo Parish Commission authorizing the Mineral Board to act in its behalf



TRACT 37463 - Caddo Parish, Louisiana

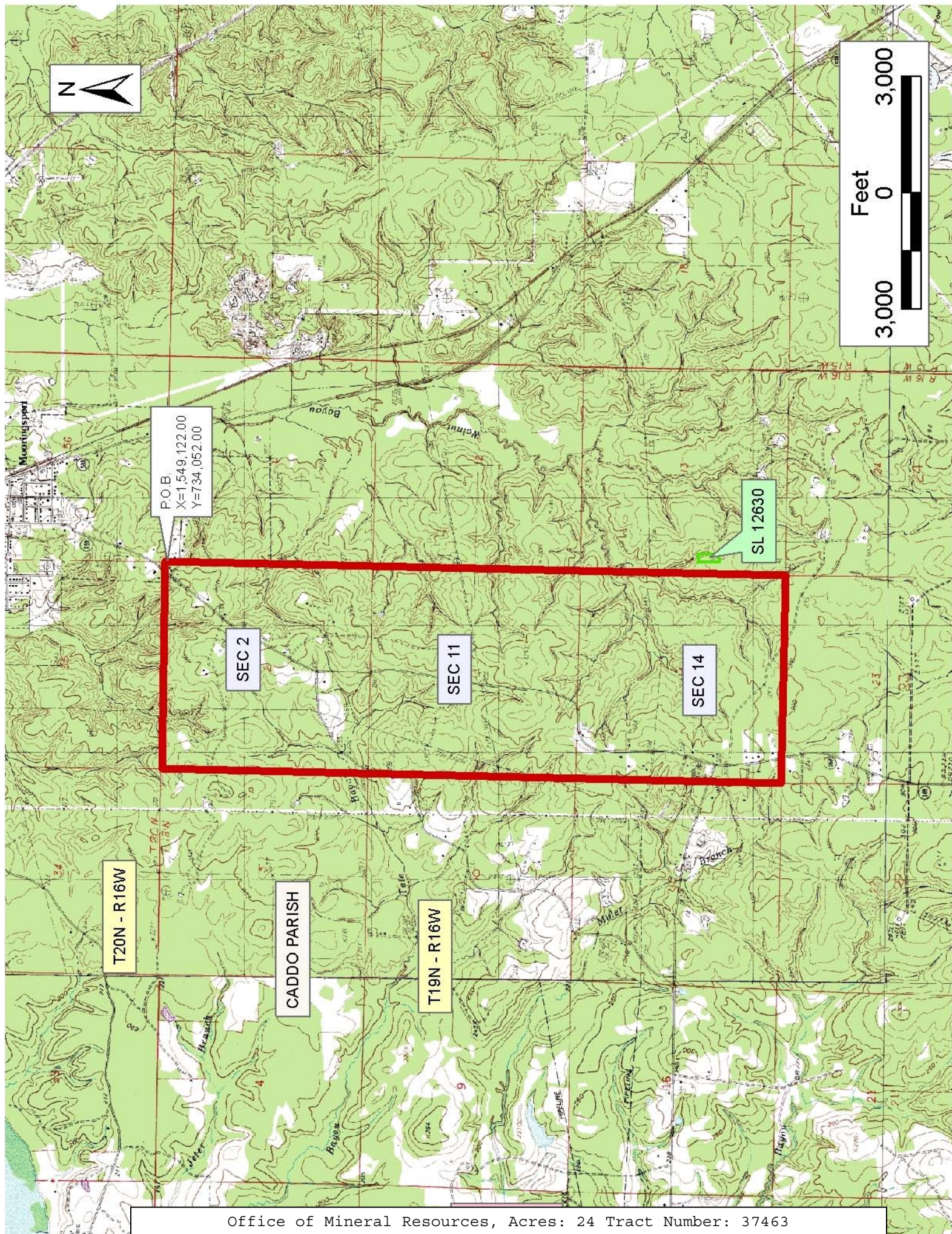
A certain Tract of land, excluding the beds and bottoms of all navigable waters, belonging to and not presently under mineral lease from Louisiana Department Of Transportation And Development on June 8, 2005, being more fully described as follows: Beginning at a point having Coordinates of X = 1,549,122.00 and Y = 734,052.00; thence South 01 degrees 31 minutes 58 seconds West 16,001.72 feet to a point having Coordinates of X = 1,548,694.00 and Y = 718,056.00; thence North 88 degrees 31 minutes 37 seconds West 5,367.77 feet to a point having Coordinates of X = 1,543,328.00 and Y = 718,194.00; thence North 01 degrees 36 minutes 55 seconds East 15,975.86 feet to a point having Coordinates of X = 1,543,778.36 and Y = 734,163.51; thence South 88 degrees 48 minutes 17 seconds East 5,344.81 feet to the point of beginning, containing approximately **24 acres**, all as more particularly outlined on a plat on file in the Office of Mineral Resources, Department of Natural Resources. The description is based on information provided by the State Agency regarding location and ownership of surface and mineral rights. All bearings, distances and coordinates, if applicable, are based on Louisiana Coordinate System of 1927, (North or South Zone).

NOTE: The above description of the Tract nominated for lease has been provided and corrected, where required, exclusively by the nomination party. Any mineral lease selected from this Tract and awarded by the Louisiana State Mineral Board shall be without warranty of any kind, either express, implied, or statutory, including, but not limited to, the implied warranties of merchantability and fitness for a particular purpose. Should the mineral lease awarded by the Louisiana State Mineral Board be subsequently modified, cancelled or abrogated due to the existence of conflicting leases, operating agreements, private claims or other future obligations or conditions which may affect all or any portion of the leased Tract, it shall not relieve the Lessee of the obligation to pay any bonus due thereon to the Louisiana State Mineral Board, nor shall the Louisiana State Mineral Board be obligated to refund any consideration paid by the Lessor prior to such modification, cancellation, or abrogation, including, but not limited to, bonuses, rentals and royalties.

Applicant: Colorado, Shine & Company to Agency and by Resolution from the

Bidder	Cash Payment	Price/ Acre	Rental	Oil	Gas	Other

Louisiana Department Of Transportation And Development authorizing the Mineral Board to act in its behalf



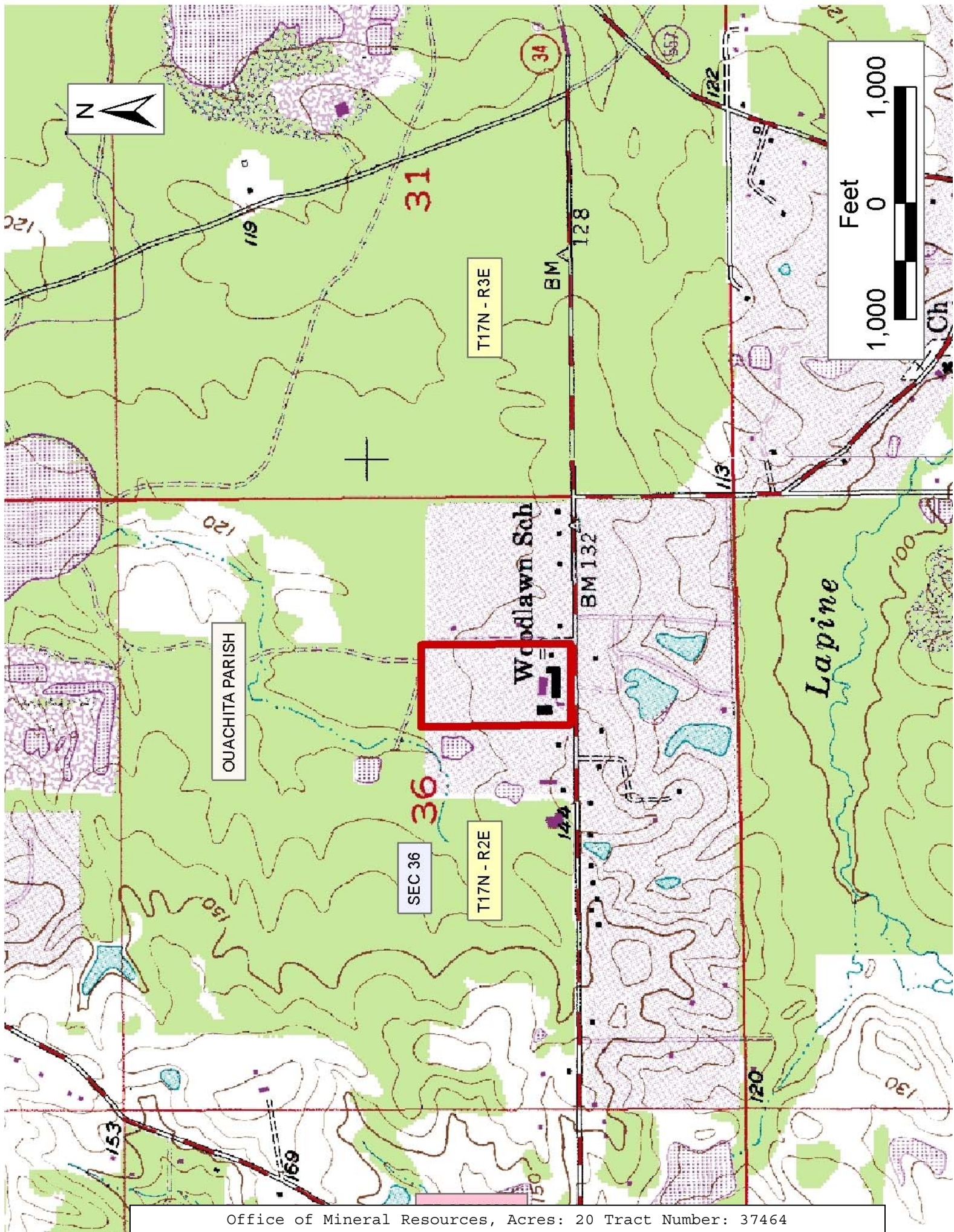
TRACT 37464 - Ouachita Parish, Louisiana

A certain Tract of land, excluding the beds and bottoms of all navigable waters, belonging to and not presently under mineral lease from Ouachita Parish School Board on June 8, 2005, being more fully described as follows: The East Half (E/2) of the Northwest Quarter (NW /4) of the Southeast (SE /4) of Section 36, Township 17 North, Range 2 East, Ouachita Parish, Louisiana, containing approximately **20 acres**, all as more particularly outlined on a plat on file in the Office of Mineral Resources, Department of Natural Resources. The description is based on information provided by the State Agency regarding location and ownership of surface and mineral rights. All bearings, distances and coordinates, if applicable, are based on Louisiana Coordinate System of 1927, (North or South Zone).

NOTE: The above description of the Tract nominated for lease has been provided and corrected, where required, exclusively by the nomination party. Any mineral lease selected from this Tract and awarded by the Louisiana State Mineral Board shall be without warranty of any kind, either express, implied, or statutory, including, but not limited to, the implied warranties of merchantability and fitness for a particular purpose. Should the mineral lease awarded by the Louisiana State Mineral Board be subsequently modified, cancelled or abrogated due to the existence of conflicting leases, operating agreements, private claims or other future obligations or conditions which may affect all or any portion of the leased Tract, it shall not relieve the Lessee of the obligation to pay any bonus due thereon to the Louisiana State Mineral Board, nor shall the Louisiana State Mineral Board be obligated to refund any consideration paid by the Lessor prior to such modification, cancellation, or abrogation, including, but not limited to, bonuses, rentals and royalties.

Applicant: Theophilus Oil, Gas & Land Services, LLC to Agency and by Resolution from the Ouachita Parish School Board authorizing the Mineral Board to act in its behalf

Bidder	Cash Payment	Price/ Acre	Rental	Oil	Gas	Other



TRACT 37465 - Jackson Parish, Louisiana

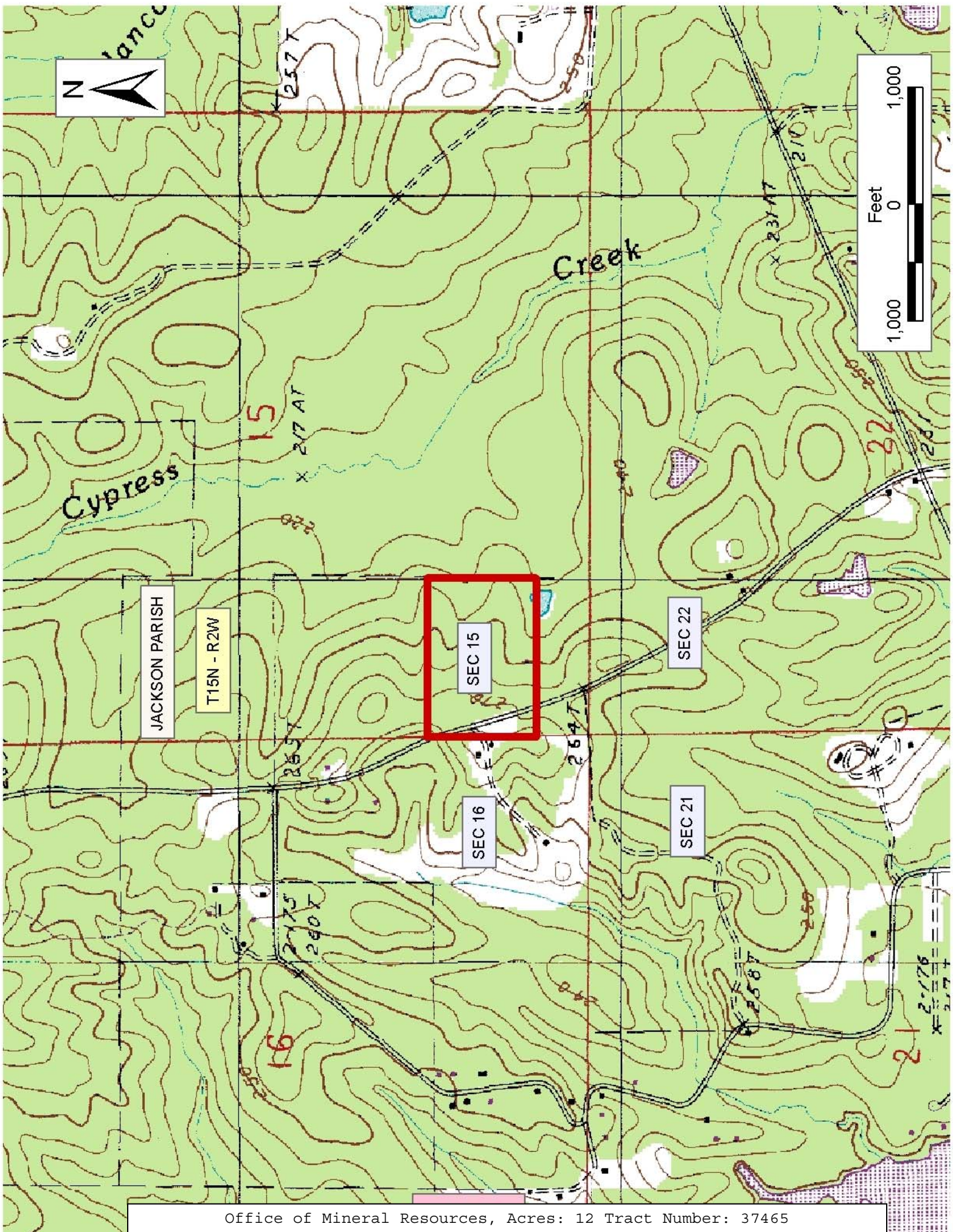
A certain Tract of land, excluding the beds and bottoms of all navigable waters, belonging to and not presently under mineral lease from Jackson Parish Police Jury on June 8, 2005, being more fully described as follows: A certain tract of property situated in Jackson Parish, Louisiana containing 24 acres, more or less, described as the North 25 acres of the SW 1/4 of SW 1/4 of Section 15, Township 15 North, Range 2 West, together with all improvements thereon, appurtenances thereunto belonging and component parts **LESS AND EXCEPT** one acre, more or less, lying West of the old Winnfield and Vernon Road conveyed to J. R. Bodie, husband of Vergie Mae Davis Bodie in that certain cash sale deed dated and recorded December 24, 1945 in the conveyance records of Jackson Parish, Louisiana under instrument number 86639 recorded in Conveyance Book 65 at page 94, being an undivided fifty percent (50%) interest in a gross 24 acre tract, containing approximately **net 12 acres** for purposes of bidding, all as more particularly outlined on a plat on file in the Office of Mineral Resources, Department of Natural Resources. The description is based on information provided by the State Agency regarding location and ownership of surface and mineral rights. All bearings, distances and coordinates, if applicable, are based on Louisiana Coordinate System of 1927, (North or South Zone).

NOTE: The above description of the Tract nominated for lease has been provided and corrected, where required, exclusively by the nomination party. Any mineral lease selected from this Tract and awarded by the Louisiana State Mineral Board shall be without warranty of any kind, either express, implied, or statutory, including, but not limited to, the implied warranties of merchantability and fitness for a particular purpose. Should the mineral lease awarded by the Louisiana State Mineral Board be subsequently modified, cancelled or abrogated due to the existence of conflicting leases, operating agreements, private claims or other future obligations or conditions which may affect all or any portion of the leased Tract, it shall not relieve the Lessee of the obligation to pay any bonus due thereon to the Louisiana State Mineral Board, nor shall the Louisiana State Mineral Board be obligated to refund any consideration paid by the Lessor prior to such modification, cancellation, or abrogation, including, but not limited to, bonuses, rentals and royalties.

NOTE: No surface operations will be conducted on the property without prior written consent from surface owners.

Applicant: George S. Pate to Agency and by Resolution from the Jackson Parish Police Jury authorizing the Mineral Board to act in its behalf

Bidder	Cash Payment	Price/ Acre	Rental	Oil	Gas	Other



TRACT 37466 - Caddo Parish, Louisiana

A certain Tract of land, excluding the beds and bottoms of all navigable waters, belonging to and not presently under mineral lease from Caddo Levee District on June 8, 2005, being more fully described as follows: The South Half of the Southwest Quarter and the Northwest Quarter of the Southwest Quarter of Section 23, and the Northwest Quarter of the Northwest Quarter of Section 26, Township 15 North, Range 12 West, Caddo Parish Louisiana, containing approximately **160 acres**, all as more particularly outlined on a plat on file in the Office of Mineral Resources, Department of Natural Resources. The description is based on information provided by the State Agency regarding location and ownership of surface and mineral rights. All bearings, distances and coordinates, if applicable, are based on Louisiana Coordinate System of 1927, (North or South Zone).

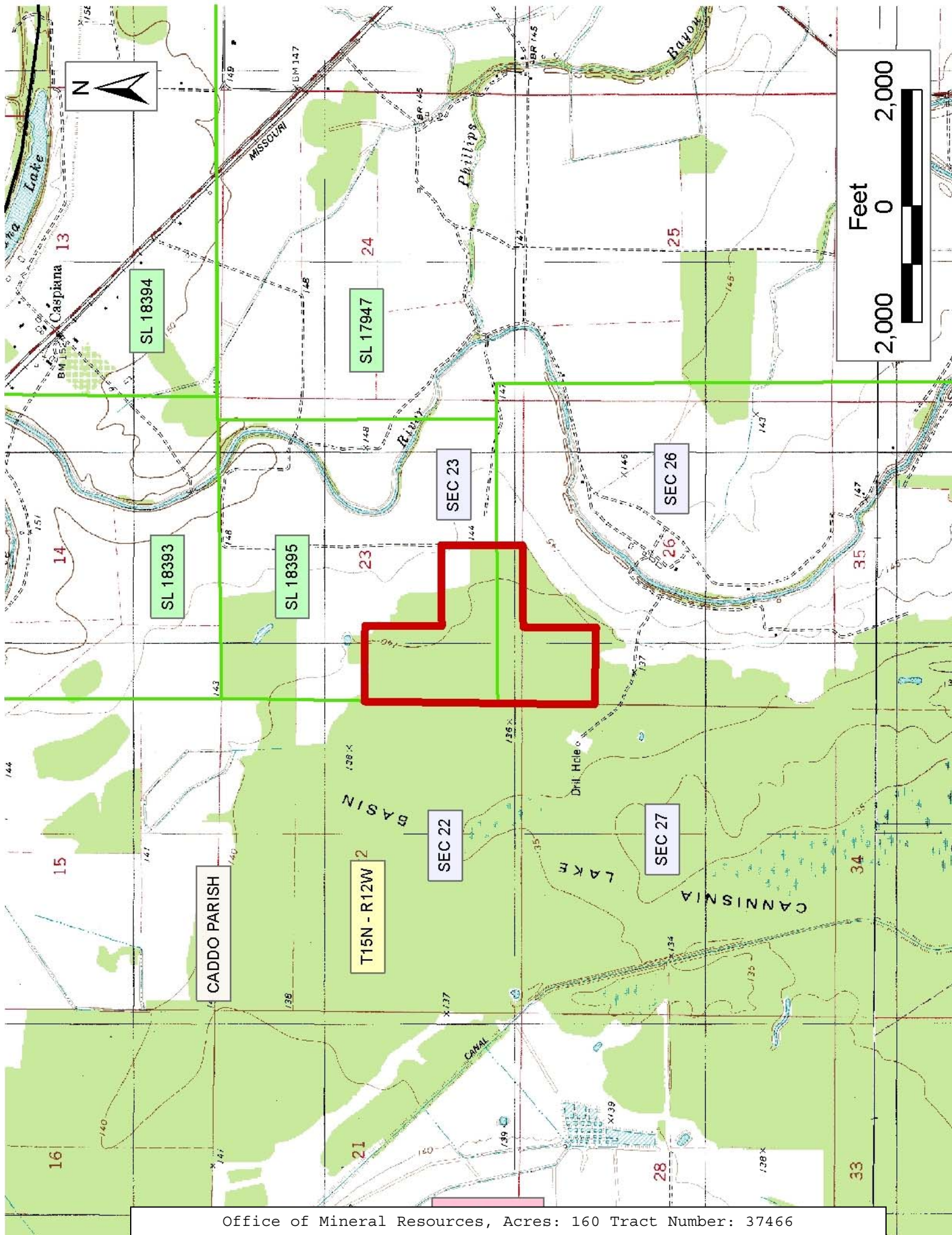
NOTE: The above description of the Tract nominated for lease has been provided and corrected, where required, exclusively by the nomination party. Any mineral lease selected from this Tract and awarded by the Louisiana State Mineral Board shall be without warranty of any kind, either express, implied, or statutory, including, but not limited to, the implied warranties of merchantability and fitness for a particular purpose. Should the mineral lease awarded by the Louisiana State Mineral Board be subsequently modified, cancelled or abrogated due to the existence of conflicting leases, operating agreements, private claims or other future obligations or conditions which may affect all or any portion of the leased Tract, it shall not relieve the Lessee of the obligation to pay any bonus due thereon to the Louisiana State Mineral Board, nor shall the Louisiana State Mineral Board be obligated to refund any consideration paid by the Lessor prior to such modification, cancellation, or abrogation, including, but not limited to, bonuses, rentals and royalties.

NOTE: The fair market value shall be paid to Lessor for all merchantable timber removed or destroyed in conducting operations on the above described tract.

NOTE: Unless a well shall be drilling at the expiration of the primary term, Lessee shall, by written recordable instrument, release all rights at a depth greater than one hundred feet (100') below the stratographic equivalent of the deepest producing interval underlying the lease premises or any portion thereof which may be included in a producing unit. In case a well is drilling when the primary term ends, the determining date shall be the date when such well is completed as a producer or a dry hole.

Applicant: Morganza Exploration to Agency and by Resolution from the Caddo Levee District authorizing the Mineral Board to act in its behalf

Bidder	Cash Payment	Price/ Acre	Rental	Oil	Gas	Other



TRACT 37467 - East Feliciana Parish, Louisiana

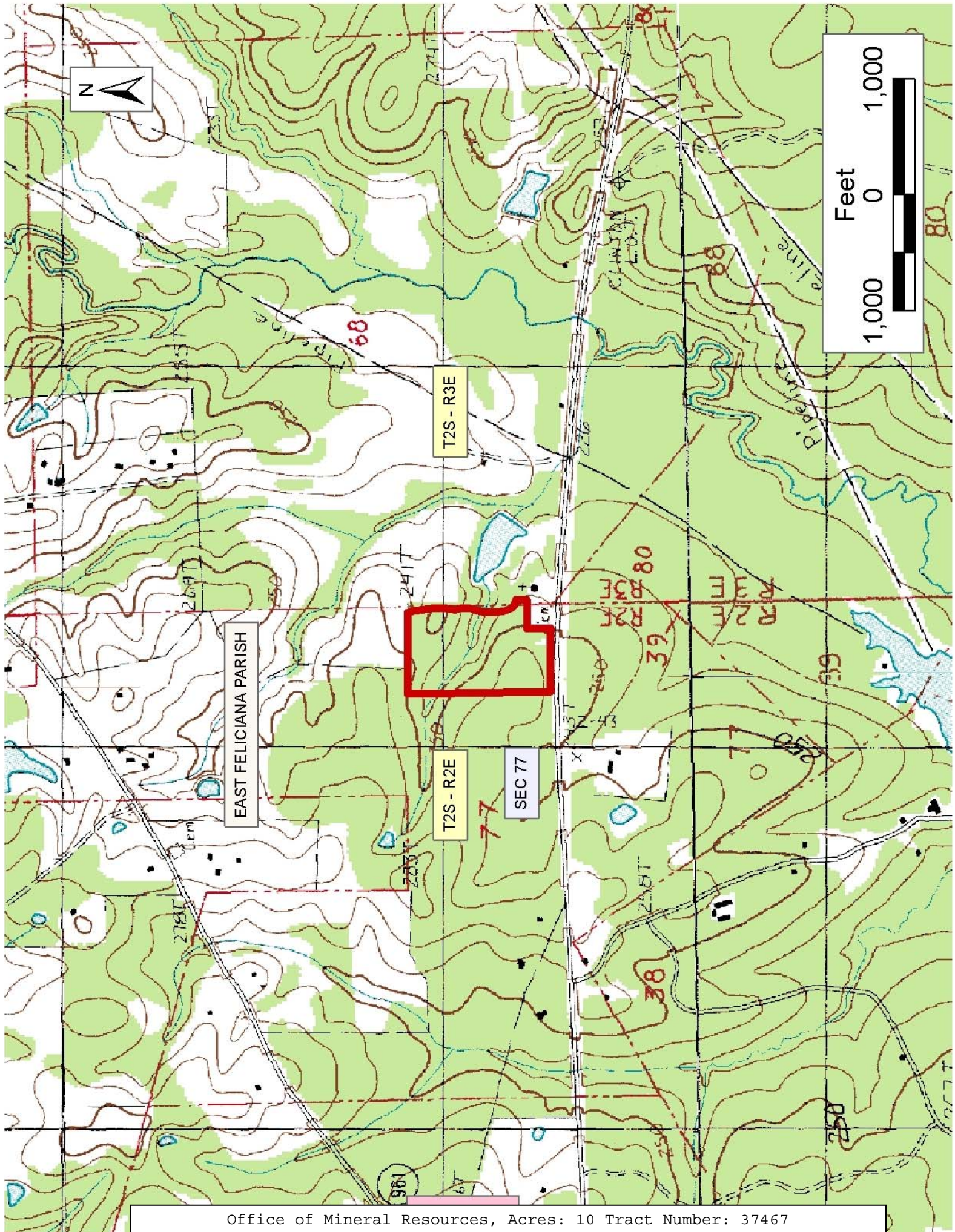
A certain Tract of land, excluding the beds and bottoms of all navigable waters, belonging to and not presently under mineral lease from on June 8, 2005, being more fully described as follows: A certain tract or parcel of land containing 20.40 acres situated in Section 77, Township 2 South, Range 2 East, East Feliciana Parish, Louisiana, being more particularly shown and described according to a Map showing the survey of a 20.00 acre tract being removed from the C. H. Powers, Jr. property located in Section 77, Township 2 South, Range 2 East, East Feliciana Parish, Louisiana for: C. H. Powers, Jr., by Wallace J. Hargrave, Registered Land Surveyor, dated November 25, 1977 as follows, to wit: Commence at iron pipe on range line common to Range 2 East and Range 3 East, which said point is designated as point K feet according to said plat; thence West a distance of 213.94 feet to pipe and corner; thence South 1 degree 00 minutes East, a distance of 205.08 feet to Louisiana Department of Highways concrete monument and right of way of Louisiana Highway 10; thence North 87 degrees 40 minutes West, a distance of 268.2 feet to Louisiana Department of Highways concrete monument; thence South 89 degrees 07 minutes West, a distance of 89.18 feet to Louisiana Department of Highways concrete monument; thence North 88 degrees 43 minutes West, a distance of 187.46 feet to iron rod and corner; thence North 1,226.80 feet to iron pipe and corner; thence East, a distance of 754.80 feet to an iron pipe and corner which said point is designated as Point A feet according to said plat; thence South, a distance of 1,035.65 feet to point of beginning, **LESS AND EXCEPT:** That certain strip of land containing 0.40 acres, being an undivided fifty percent (50%) interest in a gross 20 acre and containing approximately **net 10 acres** for purposes of bidding, all as more particularly outlined on a plat on file in the Office of Mineral Resources, Department of Natural Resources. The description is based on information provided by the State Agency regarding location and ownership of surface and mineral rights. All bearings, distances and coordinates, if applicable, are based on Louisiana Coordinate System of 1927, (North or South Zone).

NOTE: The above description of the Tract nominated for lease has been provided and corrected, where required, exclusively by the nomination party. Any mineral lease selected from this Tract and awarded by the Louisiana State Mineral Board shall be without warranty of any kind, either express, implied, or statutory, including, but not limited to, the implied warranties of merchantability and fitness for a particular purpose. Should the mineral lease awarded by the Louisiana State Mineral Board be subsequently modified, cancelled or abrogated due to the existence of conflicting leases, operating agreements, private claims or other future obligations or conditions which may affect all or any portion of the leased Tract, it shall not relieve the Lessee of the obligation to pay any bonus due thereon to the Louisiana State Mineral Board, nor shall the Louisiana State Mineral Board be obligated to refund any consideration paid by the Lessor prior to such modification, cancellation, or abrogation, including, but not limited to, bonuses, rentals and royalties.

NOTE: Surface rights shall be excluded from this lease.

Applicant: Corum Production Company

Bidder	Cash Payment	Price/ Acre	Rental	Oil	Gas	Other



TRACT 37468 - Lafayette Parish, Louisiana

A certain Tract of land, excluding the beds and bottoms of all navigable waters, belonging to and not presently under mineral lease from Lafayette Consolidated Government on June 8, 2005, being more fully described as follows: Beginning at a point having Coordinates of X = 1,798,276.00 and Y = 542,112.00; thence West 10,488.00 feet to a point having Coordinates of X = 1,787,788.00 and Y = 542,112.00; thence North 3,390.51 feet to a point on the boundary of State Agency Lease No. 16277 having Coordinates of X = 1,787,788.00 and Y = 545,502.51; thence along the boundary of said State Agency Lease No. 16277 the following courses: South 79 degrees 22 minutes 36 seconds East 74.38 feet, South 78 degrees 33 minutes 54 seconds East 486.59 feet, South 80 degrees 05 minutes 40 seconds East 457.72 feet, South 84 degrees 16 minutes 01 second East 531.26 feet, South 86 degrees 14 minutes 02 seconds East 333.42 feet, South 88 degrees 31 minutes 14 seconds East 284.79 feet, and North 00 degrees 17 minutes 11 seconds East 417.71 feet to the Southeast corner of State Agency Lease No. 15942 having Coordinates of X = 1,789,937.02 and Y = 545,648.97; thence along the boundary of said State Agency Lease No. 15942 the following courses: North 00 degrees 17 minutes 11 seconds East 1,507.12 feet and North 08 degrees 30 minutes 09 seconds West 1,227.42 feet to a point having Coordinates of X = 1,789,763.08 and Y = 548,370.00; thence East 7,331.26 feet to a Southwest corner of State Agency Lease No. 18116 having Coordinates of X = 1,797,094.34 and Y = 548,370.00; thence East 1,181.66 feet on the South line of said State Agency Lease No. 18116 to a point having Coordinates of X = 1,798,276.00 and Y = 548,370.00; thence South 6,258.00 feet to the point of beginning, containing approximately **62 acres**, all as more particularly outlined on a plat on file in the Office of Mineral Resources, Department of Natural Resources. The description is based on information provided by the State Agency regarding location and ownership of surface and mineral rights. All bearings, distances and coordinates, if applicable, are based on Louisiana Coordinate System of 1927, (North or South Zone).

NOTE: The above description of the Tract nominated for lease has been provided and corrected, where required, exclusively by the nomination party. Any mineral lease selected from this Tract and awarded by the Louisiana State Mineral Board shall be without warranty of any kind, either express, implied, or statutory, including, but not limited to, the implied warranties of merchantability and fitness for a particular purpose. Should the mineral lease awarded by the Louisiana State Mineral Board be subsequently modified, cancelled or abrogated due to the existence of conflicting leases, operating agreements, private claims or other future obligations or conditions which may affect all or any portion of the leased Tract, it shall not relieve the Lessee of the obligation to pay any bonus due thereon to the Louisiana State Mineral Board, nor shall the Louisiana State Mineral Board be obligated to refund any consideration paid by the Lessor prior to such modification, cancellation, or abrogation, including, but not limited to, bonuses, rentals and royalties.

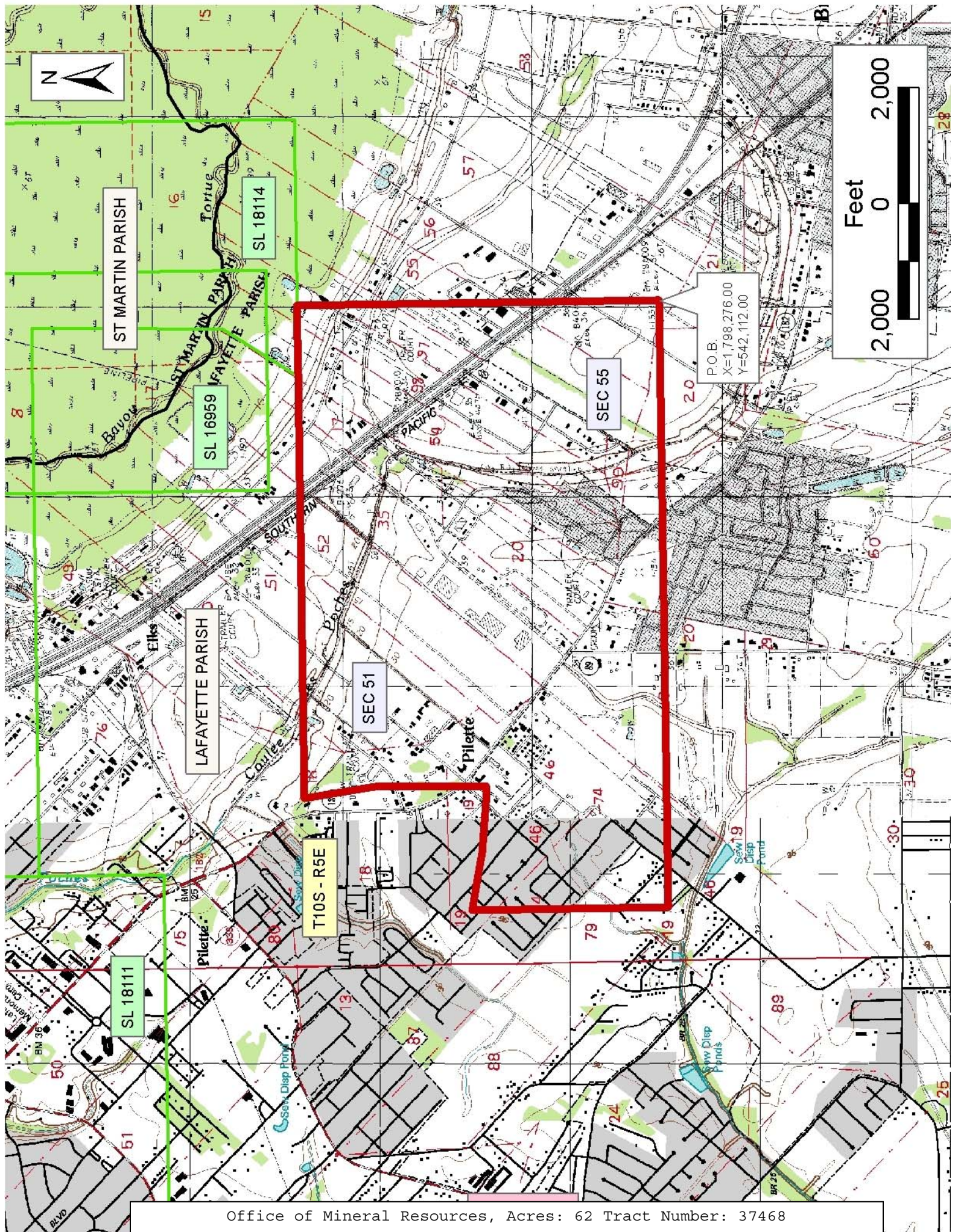
NOTE: There shall be no drilling or surface operations (including particularly geophysical operations) on the lands herein.

NOTE: Lessee or assignee shall be required to obtain consent from the Lafayette City-Parish Consolidated Government prior to the execution of any assignment, sublease or other transfer.

NOTE: Lessee shall at all times comply with all applicable environmental and wetlands laws and regulations promulgated by the federal government, the State of Louisiana, and/or any department, office or agency thereof, and that the lessee shall obtain all licenses and/or permits required under such laws and regulations.

Applicant: Jil Exploration, Inc. to Agency and by Resolution from the Lafayette Consolidated Government authorizing the Mineral Board to act in its behalf

Bidder	Cash Payment	Price/ Acre	Rental	Oil	Gas	Other



TRACT 37469 - Lafayette Parish, Louisiana

A certain Tract of land, excluding the beds and bottoms of all navigable waters, belonging to and not presently under mineral lease from Lafayette Consolidated Government on June 8, 2005, being more fully described as follows: Beginning at a point having Coordinates of X = 1,798,276.00 and Y = 542,112.00; thence North 6,258.00 feet to a point on the boundary of State Agency Lease No. 18116 having Coordinates of X = 1,798,276.00 and Y = 548,370.00; thence East 3,224.00 feet on the boundary of said State Agency Lease No. 18116 to its Southeast corner having Coordinates of X = 1,801,500.00 and Y = 548,370.00; thence East 7,264.00 feet to a point having Coordinates of X = 1,808,764.00 and Y = 548,370.00; thence South 6,258.00 feet to a point having Coordinates of X = 1,808,764.00 and Y = 542,112.00; thence West 10,488.00 feet to the point of beginning, containing approximately **50 acres**, all as more particularly outlined on a plat on file in the Office of Mineral Resources, Department of Natural Resources. The description is based on information provided by the State Agency regarding location and ownership of surface and mineral rights. All bearings, distances and coordinates, if applicable, are based on Louisiana Coordinate System of 1927, (North or South Zone).

NOTE: The above description of the Tract nominated for lease has been provided and corrected, where required, exclusively by the nomination party. Any mineral lease selected from this Tract and awarded by the Louisiana State Mineral Board shall be without warranty of any kind, either express, implied, or statutory, including, but not limited to, the implied warranties of merchantability and fitness for a particular purpose. Should the mineral lease awarded by the Louisiana State Mineral Board be subsequently modified, cancelled or abrogated due to the existence of conflicting leases, operating agreements, private claims or other future obligations or conditions which may affect all or any portion of the leased Tract, it shall not relieve the Lessee of the obligation to pay any bonus due thereon to the Louisiana State Mineral Board, nor shall the Louisiana State Mineral Board be obligated to refund any consideration paid by the Lessor prior to such modification, cancellation, or abrogation, including, but not limited to, bonuses, rentals and royalties.

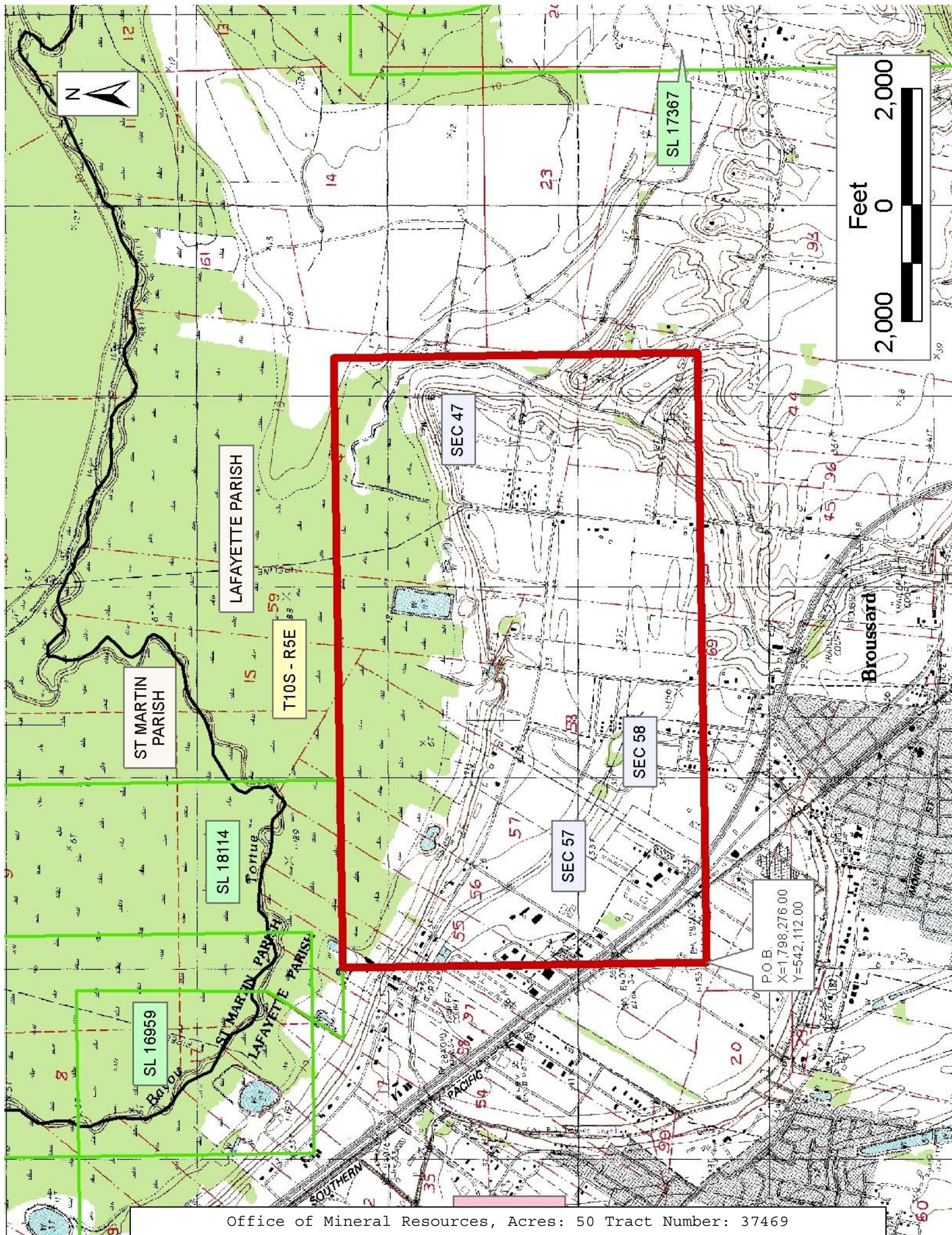
NOTE: There shall be no drilling or surface operations (including particularly geophysical operations) on the lands herein.

NOTE: Lessee or assignee shall be required to obtain consent from the Lafayette City-Parish Consolidated Government prior to the execution of any assignment, sublease or other transfer.

NOTE: Lessee shall at all times comply with all applicable environmental and wetlands laws and regulations promulgated by the federal government, the State of Louisiana, and/or any department, office or agency thereof, and that the lessee shall obtain all licenses and/or permits required under such laws and regulations.

Applicant: Jil Exploration, Inc. to Agency and by Resolution from the Lafayette Consolidated Government authorizing the Mineral Board to act in its behalf

Bidder	Cash Payment	Price/ Acre	Rental	Oil	Gas	Other



TRACT 37470 - Jefferson Davis Parish, Louisiana

A certain Tract of land, excluding the beds and bottoms of all navigable waters, belonging to and not presently under mineral lease from Town Of Lake Arthur on June 8, 2005, being more fully described as follows: All of the mineral rights, title and interest in roads, streets, alleys, public ways, canals and other lands owned by the Town of Lake Arthur situated in Sections 14 and 15, Township 11 South, Range 3 West, Jefferson Davis Parish, Louisiana, being more particularly described as follows: Beginning at a point having Coordinates of X = 1,576,015.00 and Y = 515,674.00; thence South 21 degrees 30 minutes 00 seconds East, approximately 361 feet to a point of intersection with the Northerly bankline of Lake Arthur; thence Southwesterly on the said bankline for an approximate distance of 3,183 feet to the point of intersection with a line having a bearing of South 20 degrees 00 minutes 00 seconds East commencing at a point having Coordinates of X = 1,573,763.39 and Y = 514,787.07; thence North 20 degrees 00 minutes 00 seconds West approximately 1,293 feet to a point having Coordinates of X = 1,573,763.39 and Y = 514,787.07; thence North 68 degrees 30 minutes 00 seconds East 2,420.00 feet to the point of beginning, **LESS AND EXCEPT** any acreage covered by State Agency Lease No. 17629 that may lie within the above described tract, containing approximately **20.36 acres**, all as more particularly outlined on a plat on file in the Office of Mineral Resources, Department of Natural Resources. The description is based on information provided by the State Agency regarding location and ownership of surface and mineral rights. All bearings, distances and coordinates, if applicable, are based on Louisiana Coordinate System of 1927, (North or South Zone).

NOTE: The above description of the Tract nominated for lease has been provided and corrected, where required, exclusively by the nomination party. Any mineral lease selected from this Tract and awarded by the Louisiana State Mineral Board shall be without warranty of any kind, either express, implied, or statutory, including, but not limited to, the implied warranties of merchantability and fitness for a particular purpose. Should the mineral lease awarded by the Louisiana State Mineral Board be subsequently modified, cancelled or abrogated due to the existence of conflicting leases, operating agreements, private claims or other future obligations or conditions which may affect all or any portion of the leased Tract, it shall not relieve the Lessee of the obligation to pay any bonus due thereon to the Louisiana State Mineral Board, nor shall the Louisiana State Mineral Board be obligated to refund any consideration paid by the Lessor prior to such modification, cancellation, or abrogation, including, but not limited to, bonuses, rentals and royalties.

NOTE: The State of Louisiana does hereby reserve, and this lease shall be subject to, the imprescriptible right of surface use in the nature of a servitude in favor of the Department of Natural Resources, including its Offices and Commissions, for the sole purpose of implementing, constructing, servicing and maintaining approved coastal zone management and/or restoration projects. Utilization of any and all rights derived

under this lease by the mineral lessee, its agents, successors or assigns, shall not interfere with nor hinder the reasonable surface use by the Department of Natural Resources, its Offices or Commissions, as herein above reserved.

Applicant: Roblyn Petroleum Corporation to Agency and by Resolution from the Town Of Lake Arthur authorizing the Mineral Board to act in its behalf

Bidder	Cash Payment	Price/ Acre	Rental	Oil	Gas	Other

