

TRACT 37458 - Cameron Parish, Louisiana

All of the lands now or formerly constituting the beds and bottoms of all water bodies of every nature and description the title of which vests in the State of Louisiana, together with all islands arising therein and other lands formed by accretion or by reliction, where allowed by law, excepting tax adjudicated lands, and not presently under mineral lease on June 8, 2005, situated in Cameron Parish, Louisiana, and more particularly described as follows: Beginning at a point on the Coastline as per the Supreme Court Decree dated June 16, 1975, having Coordinates of X = 1,573,700.00 and Y = 339,575.85; thence North approximately 1,839 feet to a point on the current Shoreline of the Gulf of Mexico or a projection thereof; thence Southeasterly approximately 18,880 feet along the current Shoreline of the Gulf of Mexico or a projection thereof to the intersection with a North South line having a Coordinate of X = 1,591,400.00; thence South approximately 1,911 feet to a point on said Coastline having Coordinates of X = 1,591,400.00 and Y = 333,879.79; thence along said Coastline the following courses: Northwesterly on a straight line to a point having Coordinates of X = 1,589,460 and Y = 334,525; Northwesterly on a straight line to a point having Coordinates of X = 1,586,780 and Y = 335,220; Northwesterly on a straight line to a point having Coordinates of X = 1,581,450 and Y = 336,800; Northwesterly on a straight line to a point having Coordinates of X = 1,576,170 and Y = 338,670; and Northwesterly on a straight line to the point of beginning, containing approximately **794 acres**, all as more particularly outlined on a plat on file in the Office of Mineral Resources, Department of Natural Resources. All bearings, distances and coordinates are based on Louisiana Coordinate System of 1927, (North or South Zone), where applicable.

NOTE: The above description of the Tract nominated for lease has been provided and corrected, where required, exclusively by the nomination party. Any mineral lease selected from this Tract and awarded by the Louisiana State Mineral Board shall be without warranty of any kind, either express, implied, or statutory, including, but not limited to, the implied warranties of merchantability and fitness for a particular purpose. Should the mineral lease awarded by the Louisiana State Mineral Board be subsequently modified, cancelled or abrogated due to the existence of conflicting leases, operating agreements, private claims or other future obligations or conditions which may affect all or any portion of the leased Tract, it shall not relieve the Lessee of the obligation to pay any bonus due thereon to the Louisiana State Mineral Board, nor shall the Louisiana State Mineral Board be obligated to refund any consideration paid by the Lessor prior to such modification, cancellation, or abrogation, including, but not limited to, bonuses, rentals and royalties.

NOTE: This tract is located within the boundaries of a wildlife management area or refuge and any operations conducted thereon in conjunction with this mineral lease may be subject to rules and regulations promulgated by the Department of Wildlife and Fisheries for the protection of fish, birds

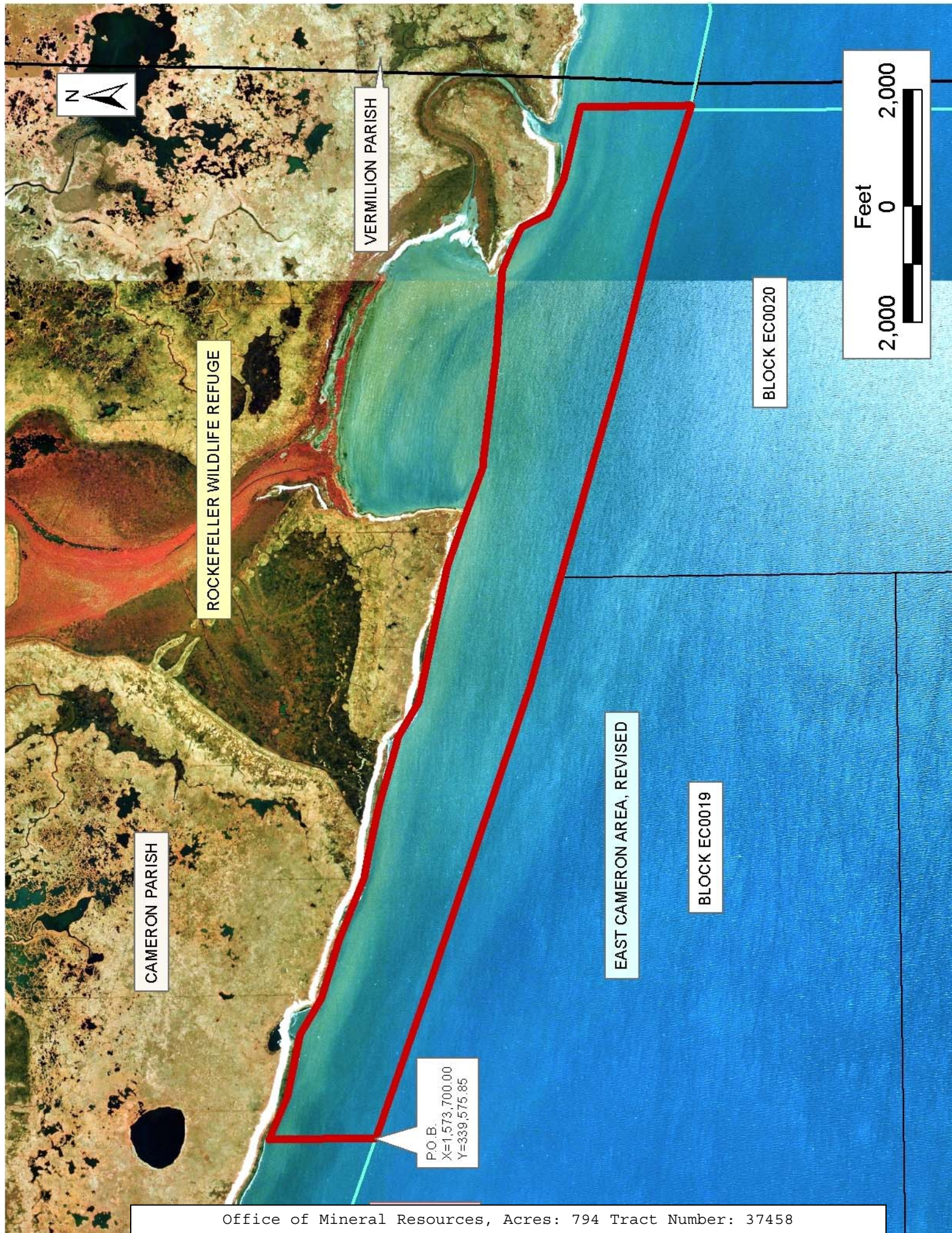
and other wildlife including, but not necessarily limited to, the following:

1. No activities will be allowed without written authorization from the Louisiana Department of Wildlife and Fisheries. All projects will be coordinated and approved by the appropriate WMA Supervisor prior to any activities on the wildlife management area.
2. Proposed projects will be evaluated on a case by case basis. Modifications to proposed projects may be required including, but not limited to, access routes, spoil placement, well sites, flow lines and other appurtenant structures required by the Louisiana Department of Wildlife and Fisheries.
3. Compensatory mitigation will be required to offset unavoidable wetland impacts.
4. Removal of all structures, facilities, and equipment will be required within 120 days of abandonment unless otherwise agreed to by the Department of Wildlife and Fisheries.
5. No activities will be allowed during the hunting season unless approved by the Department.
6. Compliance with the said WMA regulations will be required unless otherwise specified by the Department.
7. Prior to submitting applications for wetland permits to Federal and State permitting agencies the lease holder shall coordinate project details with the Louisiana Department of Wildlife and Fisheries, Fur and Refuge Division. Contact person for the Department will be Mike Windham at (504) 568-5886.

NOTE: The State of Louisiana does hereby reserve, and this lease shall be subject to, the imprescriptible right of surface use in the nature of a servitude in favor of the Department of Natural Resources, including its Offices and Commissions, for the sole purpose of implementing, constructing, servicing and maintaining approved coastal zone management and/or restoration projects. Utilization of any and all rights derived under this lease by the mineral lessee, its agents, successors or assigns, shall not interfere with nor hinder the reasonable surface use by the Department of Natural Resources, its Offices or Commissions, as herein above reserved.

Bidder	Cash Payment	Price/ Acre	Rental	Oil	Gas	Other

Applicant: Gulf Coast Oil Properties, Inc.



TRACT 37459 - Portion of Block 49, Breton Sound Area, Plaquemines Parish, Louisiana

All of the lands now or formerly constituting the beds and bottoms of all water bodies of every nature and description the title of which vests in the State of Louisiana, together with all islands arising therein and other lands formed by accretion or by reliction, where allowed by law, excepting tax adjudicated lands, and not presently under mineral lease on June 8, 2005, situated in Plaquemines Parish, Louisiana, and more particularly described as follows: Beginning at a point on the West line of Block 49, Breton Sound Area, having Coordinates of X = 2,635,350.00 and Y = 285,455.00; thence North 7,375.00 feet along the West line of said Block 49 to its Northwest corner having Coordinates of X = 2,635,350.00 and Y = 292,830.00; thence East 801.00 feet along the North line of said Block 49 to the Northwest corner of State Lease No. 17242 having Coordinates of X = 2,636,151.00 and Y = 292,830.00; thence along the boundary of said State Lease No. 17242 the following: South 1,639.00 feet, East 2,485.00 feet and North 1,639.00 feet to its Northeast corner also being a point on the North line of said Block 49 having Coordinates of X = 2,638,636.00 and Y = 292,830.00; thence East 520.00 feet along the North line of said Block 49 to the Northwest corner of State Lease No. 17241 having Coordinates of X = 2,639,156.00 and Y = 292,830.00; thence along the boundary of said State Lease No. 17241 the following: South 4,278.00 feet, East 3,525.00 feet and North 4,278.00 feet to its Northeast corner and a point on the North line of said Block 49 having Coordinates of X = 2,642,681.00 and Y = 292,830.00; thence continue East 7,419.00 feet along the North line of said Block 49 to its Northeast corner having Coordinates of X = 2,650,100.00 and Y = 292,830.00; thence South 890.00 feet along the East line of said Block 49 to the Northeast corner of State Lease No. 17239 having Coordinates of X = 2,650,100.00 and Y = 291,940.00; thence along the boundary of said State Lease No. 17239 the following: West 2,429.00 feet, South 2,757.00 feet and East 2,429.00 feet to its Southeast corner and a point on the East line of said Block 49 having Coordinates of X = 2,650,100.00 and Y = 289,183.00; thence South 3,728.00 feet along the East line of said Block 49 to a point having Coordinates of X = 2,650,100.00 and Y = 285,455.00; thence West 14,750.00 feet to the point of beginning, containing approximately **1,903.85 acres**, all as more particularly outlined on a plat on file in the Office of Mineral Resources, Department of Natural Resources. All bearings, distances and coordinates are based on Louisiana Coordinate System of 1927, (North or South Zone), where applicable.

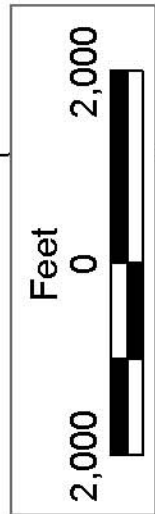
NOTE: The above description of the Tract nominated for lease has been provided and corrected, where required, exclusively by the nomination party. Any mineral lease selected from this Tract and awarded by the Louisiana State Mineral Board shall be without warranty of any kind, either express, implied, or statutory, including, but not limited to, the implied warranties of merchantability and fitness for a particular purpose. Should the mineral lease awarded by the Louisiana State Mineral Board be subsequently modified, cancelled or abrogated due to the

existence of conflicting leases, operating agreements, private claims or other future obligations or conditions which may affect all or any portion of the leased Tract, it shall not relieve the Lessee of the obligation to pay any bonus due thereon to the Louisiana State Mineral Board, nor shall the Louisiana State Mineral Board be obligated to refund any consideration paid by the Lessor prior to such modification, cancellation, or abrogation, including, but not limited to, bonuses, rentals and royalties.

NOTE: The State of Louisiana does hereby reserve, and this lease shall be subject to, the imprescriptible right of surface use in the nature of a servitude in favor of the Department of Natural Resources, including its Offices and Commissions, for the sole purpose of implementing, constructing, servicing and maintaining approved coastal zone management and/or restoration projects. Utilization of any and all rights derived under this lease by the mineral lessee, its agents, successors or assigns, shall not interfere with nor hinder the reasonable surface use by the Department of Natural Resources, its Offices or Commissions, as herein above reserved.

Applicant: Barker Energy

Bidder	Cash Payment	Price/ Acre	Rental	Oil	Gas	Other



PLAQUEMINES PARISH

BLOCK BS0048

BLOCK BS0049

BRETON
SOUND
AREA

MAIN PASS
AREA, REVISED

P.O.B.
X=2,635,350.00
Y=285,455.00

SL 17239

SL 17296

SL 17241

SL 17295

SL 17242

SL 18011

SL 18164

SL 18014

TRACT 37460 - Portion of Block 36, Main Pass Area, Revised, Plaquemines Parish, Louisiana

All of the lands now or formerly constituting the beds and bottoms of all water bodies of every nature and description the title of which vests in the State of Louisiana, together with all islands arising therein and other lands formed by accretion or by reliction, where allowed by law, excepting tax adjudicated lands, and not presently under mineral lease on June 8, 2005, situated in Plaquemines Parish, Louisiana, and more particularly described as follows: Beginning at the Southwest corner of Block 36, Main Pass Area, Revised, having Coordinates of X = 2,620,600.00 and Y = 278,080.00; thence North 5,138.00 feet along the West line of said Block 36 to the Southwest corner of State Lease 18013 having Coordinates of X = 2,620,600.00 and Y = 283,218.00; thence along the boundary of said State Lease No. 18013 the following: East 5,170.00 feet, North 14 degrees 23 minutes 20 seconds West 1,891.33 feet and North 79 degrees 44 minutes 56 seconds West 2,275.74 feet to a Northern corner having Coordinates of X = 2,623,060.59 and Y = 285,455.00; thence East 12,289.41 feet to a point on the East line of said Block 36 having Coordinates of X = 2,635,350.00 and Y = 285,455.00; thence South 868.00 feet along the East line of said Block 36 to the Northeast corner of State Lease No. 18014 having Coordinates of X = 2,635,350.00 and Y = 284,587.00; thence along the boundary of said State Lease No. 18014 the following: West 7,441.00 feet, South 3,233.00 feet, South 76 degrees 49 minutes 26 seconds East 5,896.22 feet, North 1,180.00 feet and North 64 degrees 31 minutes 25 seconds East 1,883.11 feet to its Southeast corner also being a point on said East line having Coordinates of X = 2,635,350.00 and Y = 282,000.00; thence South 3,920.00 feet along the East line of said Block 36 to its Southeast corner having Coordinates of X = 2,635,350.00 and Y = 278,080.00; thence West 14,750.00 feet along the South line of said Block 36 to the point of beginning, containing approximately **1,625.01 acres**, all as more particularly outlined on a plat on file in the Office of Mineral Resources, Department of Natural Resources. All bearings, distances and coordinates are based on Louisiana Coordinate System of 1927, (North or South Zone), where applicable.

NOTE: The above description of the Tract nominated for lease has been provided and corrected, where required, exclusively by the nomination party. Any mineral lease selected from this Tract and awarded by the Louisiana State Mineral Board shall be without warranty of any kind, either express, implied, or statutory, including, but not limited to, the implied warranties of merchantability and fitness for a particular purpose. Should the mineral lease awarded by the Louisiana State Mineral Board be subsequently modified, cancelled or abrogated due to the existence of conflicting leases, operating agreements, private claims or other future obligations or conditions which may affect all or any portion of the leased Tract, it shall not relieve the Lessee of the obligation to pay any bonus due thereon to the Louisiana State Mineral Board, nor shall the Louisiana State Mineral Board be obligated to refund any consideration

paid by the Lessor prior to such modification, cancellation, or abrogation, including, but not limited to, bonuses, rentals and royalties.

NOTE: The State of Louisiana does hereby reserve, and this lease shall be subject to, the imprescriptible right of surface use in the nature of a servitude in favor of the Department of Natural Resources, including its Offices and Commissions, for the sole purpose of implementing, constructing, servicing and maintaining approved coastal zone management and/or restoration projects. Utilization of any and all rights derived under this lease by the mineral lessee, its agents, successors or assigns, shall not interfere with nor hinder the reasonable surface use by the Department of Natural Resources, its Offices or Commissions, as herein above reserved.

Applicant: Barker Energy

Bidder	Cash Payment	Price/ Acre	Rental	Oil	Gas	Other



PLAQUEMINES PARISH

SL 1961

SL 18013

SL 18014

SL 18164

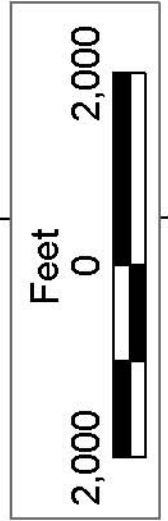
BLOCK MP0036

BRETON
SOUND
AREA

MAIN PASS
AREA, REVISED

BLOCK MP0049

P.O.B.
X=2,620,600.00
Y=278,080.00



TRACT 37461 - Portion of Block 49, Breton Sound Area, Plaquemines Parish, Louisiana

All of the lands now or formerly constituting the beds and bottoms of all water bodies of every nature and description the title of which vests in the State of Louisiana, together with all islands arising therein and other lands formed by accretion or by reliction, where allowed by law, excepting tax adjudicated lands, and not presently under mineral lease on June 8, 2005, situated in Plaquemines Parish, Louisiana, and more particularly described as follows: Beginning at the Southwest corner of Block 49, Breton Sound Area, having Coordinates of X = 2,635,350.00 and Y = 278,080.00; thence North 3,920.00 feet along the West line of said Block 49 to the Southwest corner of State Lease 18164 having Coordinates of X = 2,635,350.00 and Y = 282,000.00; thence along the boundary of said State Lease No. 18164 the following: East 1,800.00 feet, North 2,587.00 feet and West 1,800.00 feet to its Northwest corner, also being a point on the West line of said Block 49 having Coordinates of X = 2,635,350.00 and Y = 284,587.00; thence North 868.00 feet along the West line of said Block 49 to a point having Coordinates of X = 2,635,350.00 and Y = 285,455.00; thence East 14,750.00 feet to a point on the East line of said Block 49 having Coordinates of X = 2,650,100.00 and Y = 285,455.00; thence South 7,375.00 feet along the East line of said Block 49 to its Southeast corner having Coordinates of X = 2,650,100.00 and Y = 278,080.00; thence West 14,750.00 feet along the South line of said Block 49 to the Point of Beginning, containing approximately **2,390.37 acres**, all as more particularly outlined on a plat on file in the Office of Mineral Resources, Department of Natural Resources. All bearings, distances and coordinates are based on Louisiana Coordinate System of 1927, (North or South Zone), where applicable.

NOTE: The above description of the Tract nominated for lease has been provided and corrected, where required, exclusively by the nomination party. Any mineral lease selected from this Tract and awarded by the Louisiana State Mineral Board shall be without warranty of any kind, either express, implied, or statutory, including, but not limited to, the implied warranties of merchantability and fitness for a particular purpose. Should the mineral lease awarded by the Louisiana State Mineral Board be subsequently modified, cancelled or abrogated due to the existence of conflicting leases, operating agreements, private claims or other future obligations or conditions which may affect all or any portion of the leased Tract, it shall not relieve the Lessee of the obligation to pay any bonus due thereon to the Louisiana State Mineral Board, nor shall the Louisiana State Mineral Board be obligated to refund any consideration paid by the Lessor prior to such modification, cancellation, or abrogation, including, but not limited to, bonuses, rentals and royalties.

NOTE: The State of Louisiana does hereby reserve, and this lease shall be subject to, the imprescriptible right of surface use in the nature of a servitude in favor of the Department of Natural Resources, including its Offices and Commissions, for the sole purpose of implementing,

constructing, servicing and maintaining approved coastal zone management and/or restoration projects. Utilization of any and all rights derived under this lease by the mineral lessee, its agents, successors or assigns, shall not interfere with nor hinder the reasonable surface use by the Department of Natural Resources, its Offices or Commissions, as herein above reserved.

Applicant: Barker Energy

Bidder	Cash Payment	Price/ Acre	Rental	Oil	Gas	Other

