

TRACT 37448 - Cameron Parish, Louisiana

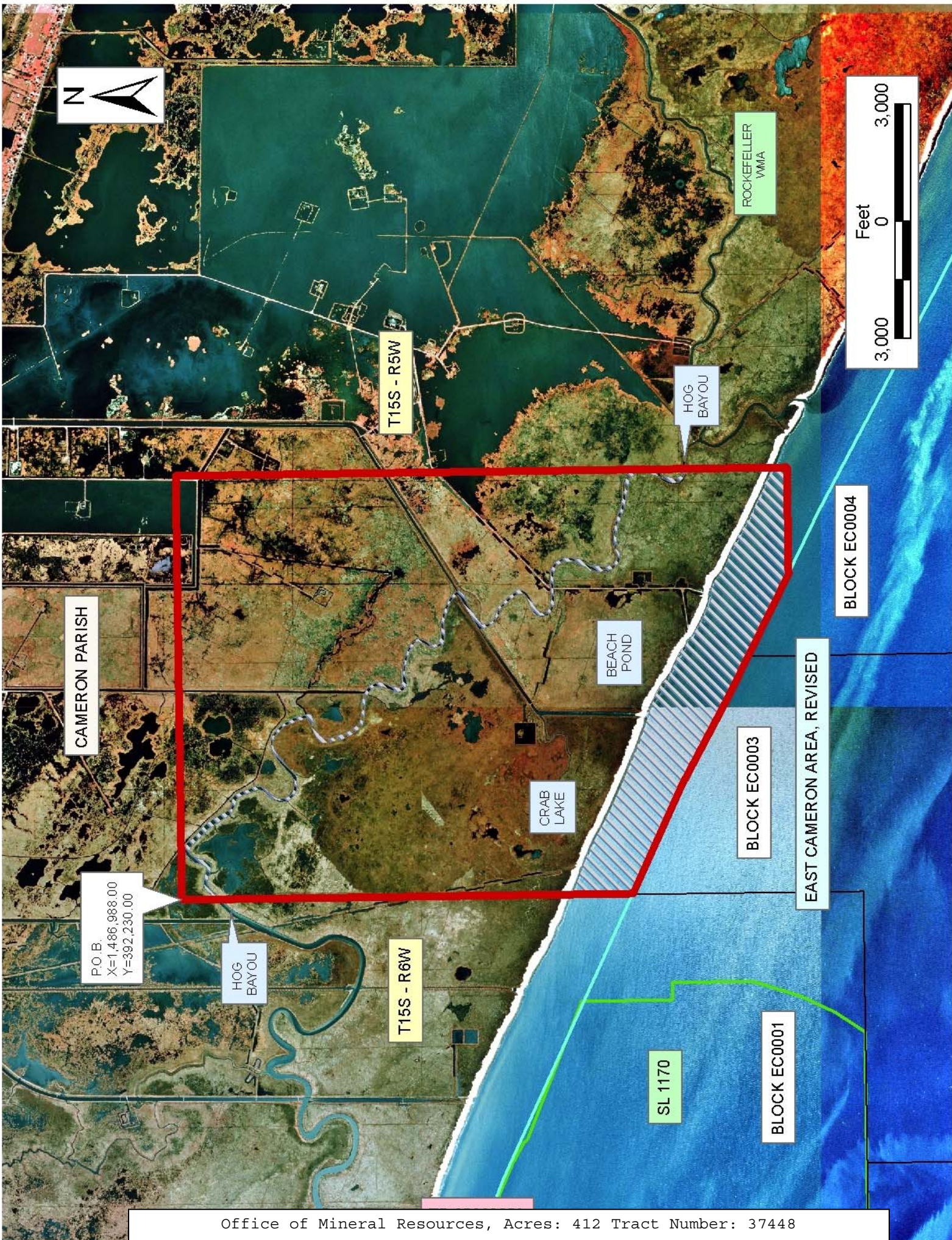
All of the lands now or formerly constituting the beds and bottoms of all water bodies of every nature and description the title of which vests in the State of Louisiana, together with all islands arising therein and other lands formed by accretion or by reliction, where allowed by law, excepting tax adjudicated lands, and not presently under mineral lease on June 8, 2005, situated in Cameron Parish, Louisiana, and more particularly described as follows: Beginning at a point having Coordinates of X = 1,486,988.00 and Y = 392,230.00; thence East 10,872.00 feet to a point having Coordinates of X = 1,497,860.00 and Y = 392,230.00; thence South 15,668.00 feet to a point having Coordinates of X = 1,497,860.00 and Y = 376,562.00; thence West 2,737.23 feet to a point having Coordinates of X = 1,495,122.77 and Y = 376,562.00; thence Northwesterly on a straight line to a point having Coordinates of X = 1,492,040 and Y = 378,110; thence Northwesterly on a straight line to a point having Coordinates of X = 1,489,725 and Y = 379,370; thence Northwesterly on a straight line to a point having Coordinates of X = 1,486,988.00 and Y = 380,662.51; thence North 11,567.49 feet to the point of beginning, containing approximately **412 acres**, all as more particularly outlined on a plat on file in the Office of Mineral Resources, Department of Natural Resources. All bearings, distances and coordinates are based on Louisiana Coordinate System of 1927, (North or South Zone), where applicable.

NOTE: The above description of the Tract nominated for lease has been provided and corrected, where required, exclusively by the nomination party. Any mineral lease selected from this Tract and awarded by the Louisiana State Mineral Board shall be without warranty of any kind, either express, implied, or statutory, including, but not limited to, the implied warranties of merchantability and fitness for a particular purpose. Should the mineral lease awarded by the Louisiana State Mineral Board be subsequently modified, cancelled or abrogated due to the existence of conflicting leases, operating agreements, private claims or other future obligations or conditions which may affect all or any portion of the leased Tract, it shall not relieve the Lessee of the obligation to pay any bonus due thereon to the Louisiana State Mineral Board, nor shall the Louisiana State Mineral Board be obligated to refund any consideration paid by the Lessor prior to such modification, cancellation, or abrogation, including, but not limited to, bonuses, rentals and royalties.

NOTE: The State of Louisiana does hereby reserve, and this lease shall be subject to, the imprescriptible right of surface use in the nature of a servitude in favor of the Department of Natural Resources, including its Offices and Commissions, for the sole purpose of implementing, constructing, servicing and maintaining approved coastal zone management and/or restoration projects. Utilization of any and all rights derived under this lease by the mineral lessee, its agents, successors or assigns, shall not interfere with nor hinder the reasonable surface use by the Department of Natural Resources, its Offices or Commissions, as herein above reserved.

Applicant: Oil And Gas Interests, Inc.

Bidder	Cash Payment	Price/Acre	Rental	Oil	Gas	Other



TRACT 37449 - Cameron Parish, Louisiana

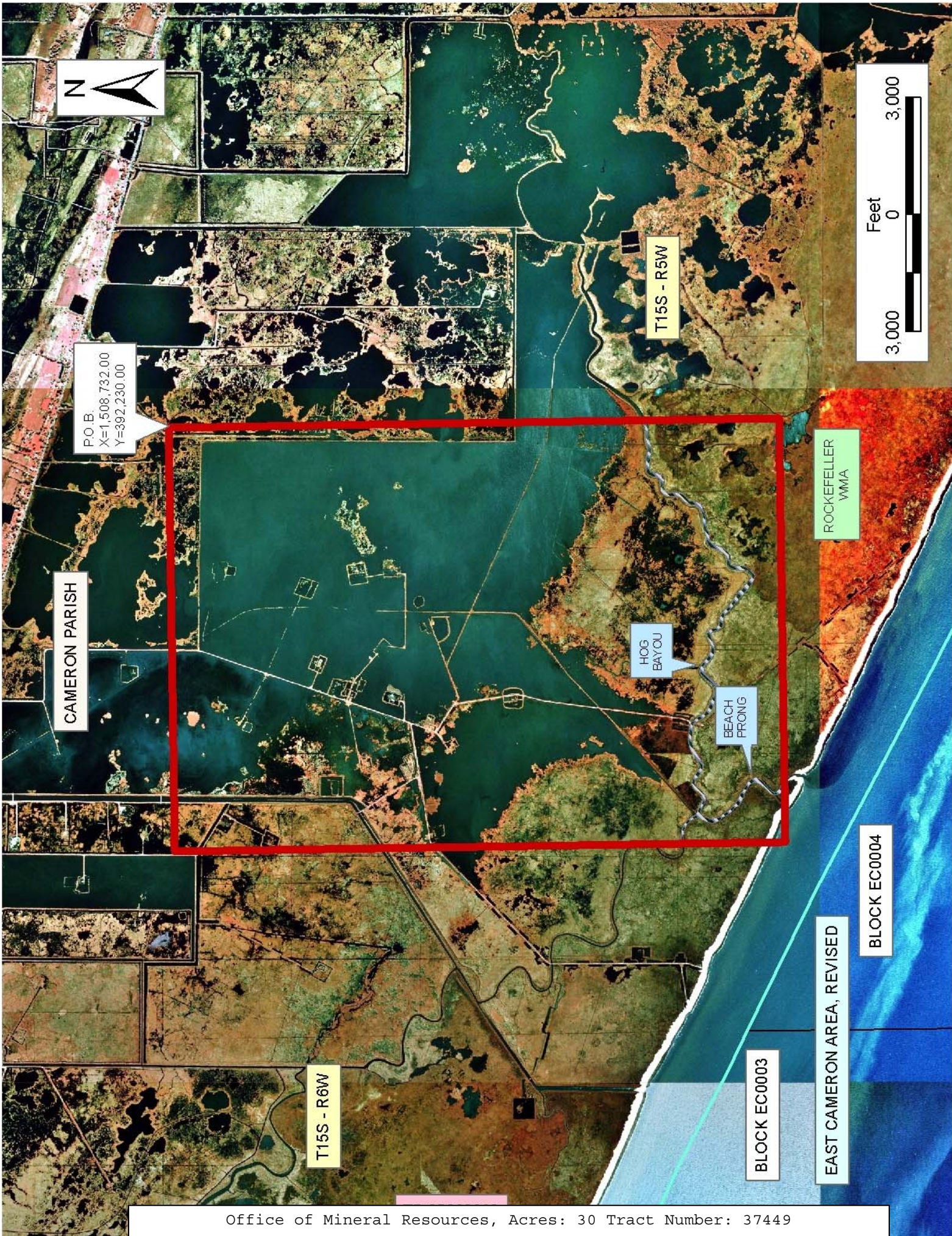
All of the lands now or formerly constituting the beds and bottoms of all water bodies of every nature and description the title of which vests in the State of Louisiana, together with all islands arising therein and other lands formed by accretion or by reliction, where allowed by law, excepting tax adjudicated lands, and not presently under mineral lease on June 8, 2005, situated in Cameron Parish, Louisiana, and more particularly described as follows: Beginning at a point having Coordinates of X = 1,508,732.00 and Y = 392,230.00; thence South 15,668.00 feet to a point having Coordinates of X = 1,508,732.00 and Y = 376,562.00; thence West 10,872.00 feet to a point having Coordinates of X = 1,497,860.00 and Y = 376,562.00; thence North 15,668.00 feet to a point having Coordinates of X = 1,497,860.00 and Y = 392,230.00; thence East 10,872.00 feet to the point of beginning, containing approximately **30 acres**, all as more particularly outlined on a plat on file in the Office of Mineral Resources, Department of Natural Resources. All bearings, distances and coordinates are based on Louisiana Coordinate System of 1927, (North or South Zone), where applicable.

NOTE: The above description of the Tract nominated for lease has been provided and corrected, where required, exclusively by the nomination party. Any mineral lease selected from this Tract and awarded by the Louisiana State Mineral Board shall be without warranty of any kind, either express, implied, or statutory, including, but not limited to, the implied warranties of merchantability and fitness for a particular purpose. Should the mineral lease awarded by the Louisiana State Mineral Board be subsequently modified, cancelled or abrogated due to the existence of conflicting leases, operating agreements, private claims or other future obligations or conditions which may affect all or any portion of the leased Tract, it shall not relieve the Lessee of the obligation to pay any bonus due thereon to the Louisiana State Mineral Board, nor shall the Louisiana State Mineral Board be obligated to refund any consideration paid by the Lessor prior to such modification, cancellation, or abrogation, including, but not limited to, bonuses, rentals and royalties.

NOTE: The State of Louisiana does hereby reserve, and this lease shall be subject to, the imprescriptible right of surface use in the nature of a servitude in favor of the Department of Natural Resources, including its Offices and Commissions, for the sole purpose of implementing, constructing, servicing and maintaining approved coastal zone management and/or restoration projects. Utilization of any and all rights derived under this lease by the mineral lessee, its agents, successors or assigns, shall not interfere with nor hinder the reasonable surface use by the Department of Natural Resources, its Offices or Commissions, as herein above reserved.

Applicant: Oil And Gas Interests, Inc.

Bidder	Cash Payment	Price/Acre	Rental	Oil	Gas	Other



P.O.B.
X=1,508,732.00
Y=392,230.00

CAMERON PARISH

T15S - R5W

ROCKEFELLER
WMA

HOG
BAYOU

BEACH
PRONG

T15S - R6W

BLOCK EC0003

EAST CAMERON AREA, REVISED

BLOCK EC0004

TRACT 37450 - St. Mary Parish, Louisiana

All of the lands now or formerly constituting the beds and bottoms of all water bodies of every nature and description the title of which vests in the State of Louisiana, together with all islands arising therein and other lands formed by accretion or by reliction, where allowed by law, excepting tax adjudicated lands, and not presently under mineral lease on June 8, 2005, situated in St. Mary Parish, Louisiana, and more particularly described as follows: Beginning at a point having Coordinates of X = 2,057,468.00 and Y = 375,154.00; thence East 8,388.00 feet to a point having Coordinates of X = 2,065,856.00 and Y = 375,154.00; thence South 3,058.67 feet to a point on the North line of State Lease No. 18469 having Coordinates of X = 2,065,856.00 and Y = 372,095.33; thence along the boundaries of said State Lease No. 18469 the following courses: West 5,514.03 feet, South 6,750.00 feet, and East 5,514.03 feet to a point having Coordinates of X = 2,065,856.00 and Y = 365,345.33; thence South 4,001.33 feet to a point having Coordinates of X = 2,065,856.00 and Y = 361,344.00; thence West 8,388.00 feet to a point having Coordinates of X = 2,057,468.00 and Y = 361,344.00; thence North 13,810.00 feet to the point of beginning, containing approximately **238 acres**, all as more particularly outlined on a plat on file in the Office of Mineral Resources, Department of Natural Resources. All bearings, distances and coordinates are based on Louisiana Coordinate System of 1927, (North or South Zone), where applicable.

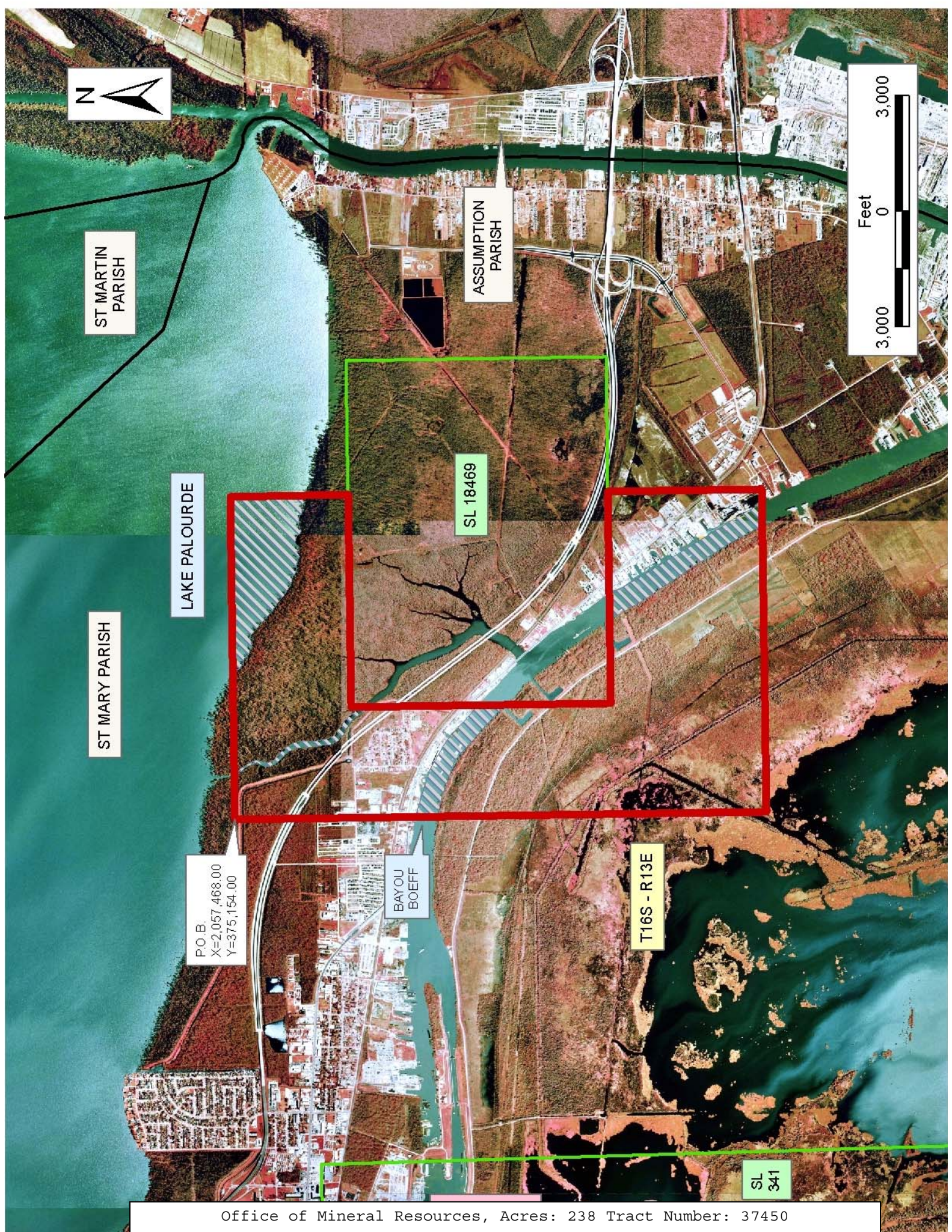
NOTE: The above description of the Tract nominated for lease has been provided and corrected, where required, exclusively by the nomination party. Any mineral lease selected from this Tract and awarded by the Louisiana State Mineral Board shall be without warranty of any kind, either express, implied, or statutory, including, but not limited to, the implied warranties of merchantability and fitness for a particular purpose. Should the mineral lease awarded by the Louisiana State Mineral Board be subsequently modified, cancelled or abrogated due to the existence of conflicting leases, operating agreements, private claims or other future obligations or conditions which may affect all or any portion of the leased Tract, it shall not relieve the Lessee of the obligation to pay any bonus due thereon to the Louisiana State Mineral Board, nor shall the Louisiana State Mineral Board be obligated to refund any consideration paid by the Lessor prior to such modification, cancellation, or abrogation, including, but not limited to, bonuses, rentals and royalties.

NOTE: The State of Louisiana does hereby reserve, and this lease shall be subject to, the imprescriptible right of surface use in the nature of a servitude in favor of the Department of Natural Resources, including its Offices and Commissions, for the sole purpose of implementing, constructing, servicing and maintaining approved coastal zone management and/or restoration projects. Utilization of any and all rights derived under this lease by the mineral lessee, its agents, successors or assigns, shall not interfere with nor hinder the reasonable surface use by the

Department of Natural Resources, its Offices or Commissions, as herein above reserved.

Applicant: Sandoz & Associates, Inc.

Bidder	Cash Payment	Price/Acre	Rental	Oil	Gas	Other



ST MARTIN
PARISH

ASSUMPTION
PARISH

LAKE PALOURDE

ST MARY PARISH

SL 18469

T16S - R13E

BAYOU
BOEFF

P.O. B.
X=2,057,468.00
Y=375,154.00

SL
341



TRACT 37451 - Vermilion Parish, Louisiana

All of the lands now or formerly constituting the beds and bottoms of all water bodies of every nature and description the title of which vests in the State of Louisiana, together with all islands arising therein and other lands formed by accretion or by reliction, where allowed by law, excepting tax adjudicated lands, and not presently under mineral lease on June 8, 2005, situated in Vermilion Parish, Louisiana, and more particularly described as follows: Beginning at a point having Coordinates of X = 1,601,574.00 and Y = 377,864.00; thence East 13,914.00 feet to a point having Coordinates of X = 1,615,488.00 and Y = 377,864.00; thence South 37 degrees 15 minutes 36 seconds East 4,935.31 feet to a point having Coordinates of X = 1,618,476.00 and Y = 373,936.00; thence South 11,454.00 feet to a point having Coordinates of X = 1,618,476.00 and Y = 362,482.00; thence West approximately 11,005 feet to a point on the boundary of the Rockefeller Wildlife Refuge and Game Preserve having a Coordinate of Y = 362,482.00; thence along the boundary of said Rockefeller Wildlife Refuge and Game Preserve the following course: Northerly approximately 2,978 feet, Westerly approximately 5,280 feet, Northerly approximately 1,329 feet, and Westerly approximately 661 feet to the point of intersection with a North South line having a Coordinate of X = 1,601,574.00; thence North approximately 10,980 feet to the point of beginning, **LESS AND EXCEPT** any portion of the above described tract which may be contained within the Rockefeller Wildlife Refuge, containing approximately **200 acres**, all as more particularly outlined on a plat on file in the Office of Mineral Resources, Department of Natural Resources. All bearings, distances and coordinates are based on Louisiana Coordinate System of 1927, (North or South Zone), where applicable.

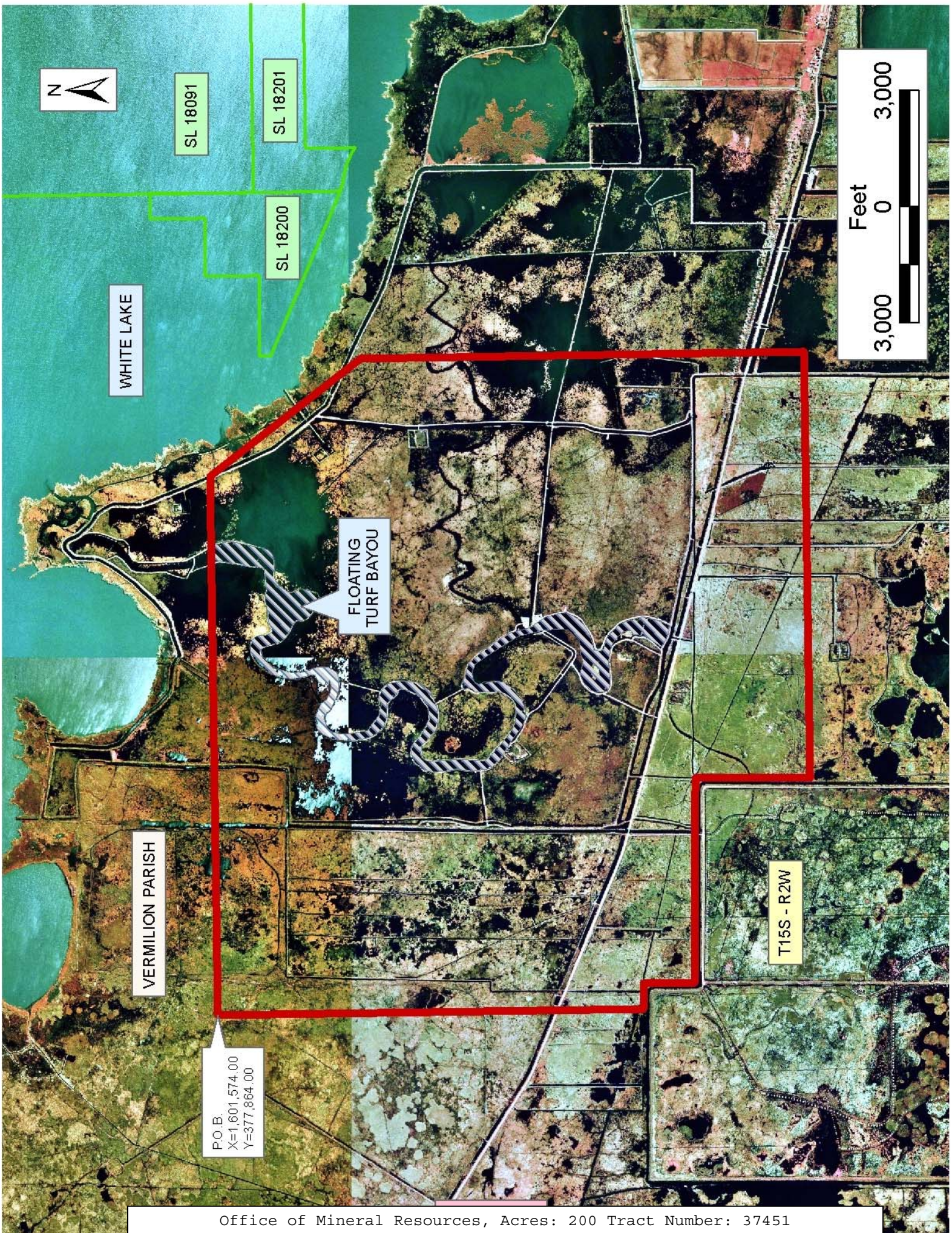
NOTE: The above description of the Tract nominated for lease has been provided and corrected, where required, exclusively by the nomination party. Any mineral lease selected from this Tract and awarded by the Louisiana State Mineral Board shall be without warranty of any kind, either express, implied, or statutory, including, but not limited to, the implied warranties of merchantability and fitness for a particular purpose. Should the mineral lease awarded by the Louisiana State Mineral Board be subsequently modified, cancelled or abrogated due to the existence of conflicting leases, operating agreements, private claims or other future obligations or conditions which may affect all or any portion of the leased Tract, it shall not relieve the Lessee of the obligation to pay any bonus due thereon to the Louisiana State Mineral Board, nor shall the Louisiana State Mineral Board be obligated to refund any consideration paid by the Lessor prior to such modification, cancellation, or abrogation, including, but not limited to, bonuses, rentals and royalties.

NOTE: The State of Louisiana does hereby reserve, and this lease shall be subject to, the imprescriptible right of surface use in the nature of a servitude in favor of the Department of Natural Resources, including its Offices and Commissions, for the sole purpose of implementing, constructing, servicing and maintaining approved coastal zone management

and/or restoration projects. Utilization of any and all rights derived under this lease by the mineral lessee, its agents, successors or assigns, shall not interfere with nor hinder the reasonable surface use by the Department of Natural Resources, its Offices or Commissions, as herein above reserved.

Applicant: Oil And Gas Interests, Inc.

Bidder	Cash Payment	Price/Acre	Rental	Oil	Gas	Other



SL 18091

SL 18201

SL 18200

WHITE LAKE

FLOATING
TURF BAYOU

VERMILION PARISH

T15S - R2W

P.O.B.
X=1,601,574.00
Y=377,864.00



TRACT 37452 - Cameron Parish, Louisiana

All of the lands now or formerly constituting the beds and bottoms of all water bodies of every nature and description the title of which vests in the State of Louisiana, together with all islands arising therein and other lands formed by accretion or by reliction, where allowed by law, excepting tax adjudicated lands, and not presently under mineral lease on June 8, 2005, situated in Cameron Parish, Louisiana, and more particularly described as follows: Beginning at a point having Coordinates of X = 1,509,516.10 and Y = 376,562.00; thence South 844.92 feet to a point on the boundary of the Rockefeller Wildlife Management Area and Game Preserve, as claimed by the Louisiana Department of Wildlife and Fisheries, having Coordinates of X = 1,509,516.10 and Y = 375,717.08; thence along the said boundary the following: North 88 degrees 39 minutes 55 seconds West 1,466.78 feet, North 88 degrees 17 minutes 04 seconds West 5,341.50 feet, North 88 degrees 25 minutes 39 seconds West 3,445.48 feet, North 88 degrees 35 minutes 11 seconds West 2,006.88 feet and North 88 degrees 39 minutes 12 seconds West 1,183.94 feet to a point on the Coastline as per the Supreme Court Decree dated June 16, 1975 having Coordinates of X = 1,496,076.56 and Y = 376,083.05; thence along said Coastline North 63 degrees 20 minutes 12 seconds West 1,067.31 feet to a point having Coordinates of X = 1,495,122.75 and Y = 376,562.00; thence East 14,393.36 feet to the point of beginning, **LESS AND EXCEPT** that portion, if any, of the Rockefeller Wildlife Management Area and Game Preserve that may lie within the above described tract, containing approximately **45 acres**, all as more particularly outlined on a plat on file in the Office of Mineral Resources, Department of Natural Resources. All bearings, distances and coordinates are based on Louisiana Coordinate System of 1927, (North or South Zone), where applicable.

NOTE: The above description of the Tract nominated for lease has been provided and corrected, where required, exclusively by the nomination party. Any mineral lease selected from this Tract and awarded by the Louisiana State Mineral Board shall be without warranty of any kind, either express, implied, or statutory, including, but not limited to, the implied warranties of merchantability and fitness for a particular purpose. Should the mineral lease awarded by the Louisiana State Mineral Board be subsequently modified, cancelled or abrogated due to the existence of conflicting leases, operating agreements, private claims or other future obligations or conditions which may affect all or any portion of the leased Tract, it shall not relieve the Lessee of the obligation to pay any bonus due thereon to the Louisiana State Mineral Board, nor shall the Louisiana State Mineral Board be obligated to refund any consideration paid by the Lessor prior to such modification, cancellation, or abrogation, including, but not limited to, bonuses, rentals and royalties.

NOTE: This tract is located within the boundaries of a wildlife management area or refuge and any operations conducted thereon in conjunction with this mineral lease may be subject to rules and regulations promulgated by the Department of Wildlife and Fisheries for the protection of fish, birds

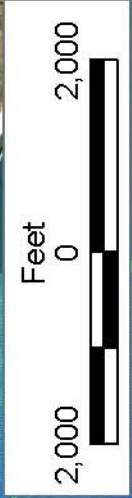
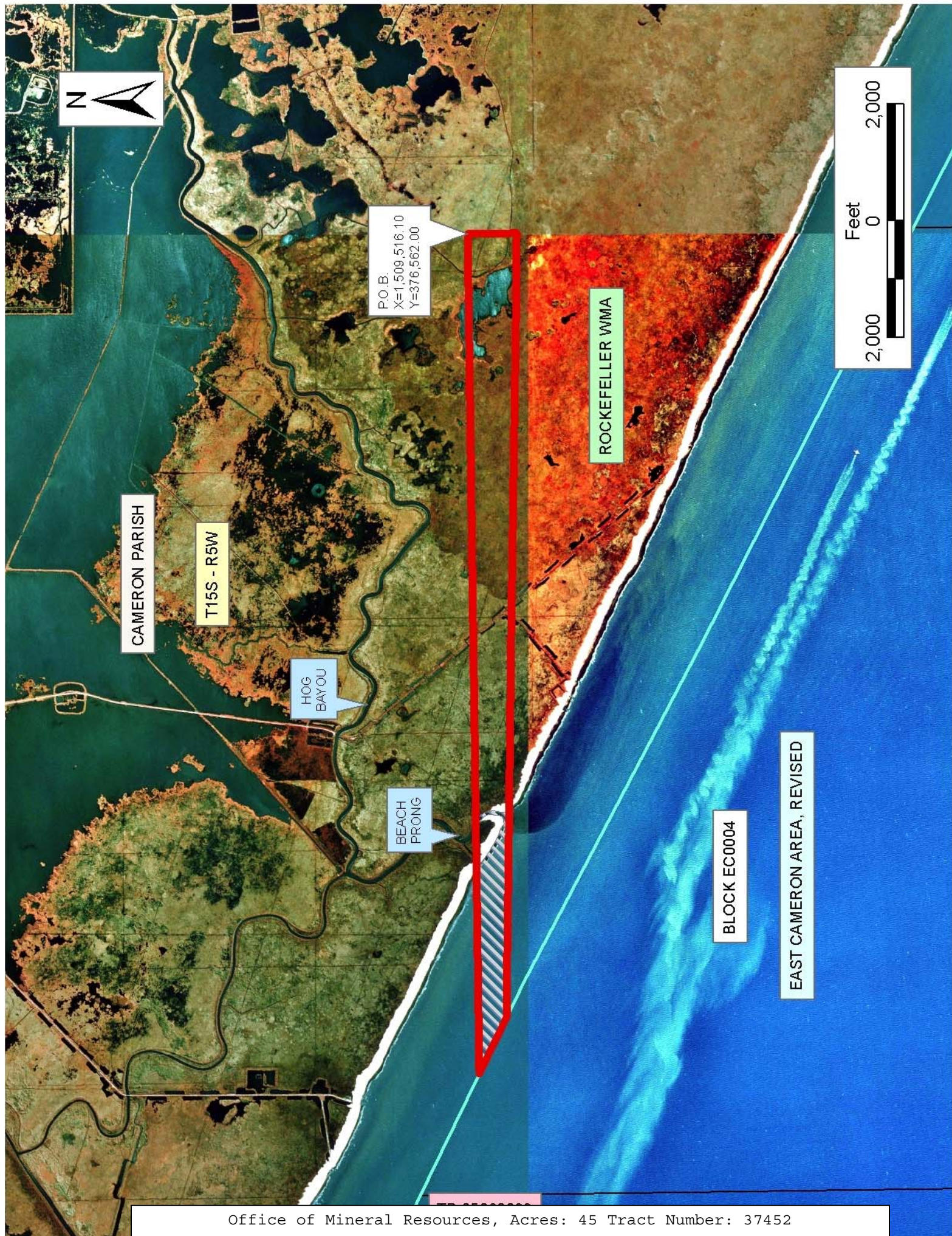
and other wildlife including, but not necessarily limited to, the following:

1. No activities will be allowed without written authorization from the Louisiana Department of Wildlife and Fisheries. All projects will be coordinated and approved by the appropriate WMA Supervisor prior to any activities on the wildlife management area.
2. Proposed projects will be evaluated on a case by case basis. Modifications to proposed projects may be required including, but not limited to, access routes, spoil placement, well sites, flow lines and other appurtenant structures required by the Louisiana Department of Wildlife and Fisheries.
3. Compensatory mitigation will be required to offset unavoidable wetland impacts.
4. Removal of all structures, facilities, and equipment will be required within 120 days of abandonment unless otherwise agreed to by the Department of Wildlife and Fisheries.
5. No activities will be allowed during the hunting season unless approved by the Department.
6. Compliance with the said WMA regulations will be required unless otherwise specified by the Department.
7. Prior to submitting applications for wetland permits to Federal and State permitting agencies the lease holder shall coordinate project details with the Louisiana Department of Wildlife and Fisheries, Fur and Refuge Division. Contact person for the Department will be Mike Windham at (504) 568-5886.

NOTE: The State of Louisiana does hereby reserve, and this lease shall be subject to, the imprescriptible right of surface use in the nature of a servitude in favor of the Department of Natural Resources, including its Offices and Commissions, for the sole purpose of implementing, constructing, servicing and maintaining approved coastal zone management and/or restoration projects. Utilization of any and all rights derived under this lease by the mineral lessee, its agents, successors or assigns, shall not interfere with nor hinder the reasonable surface use by the Department of Natural Resources, its Offices or Commissions, as herein above reserved.

Bidder	Cash Payment	Price/Acre	Rental	Oil	Gas	Other

Applicant: Juanita C. Chatelain



P.O.B.
X=1,509,516.10
Y=376,562.00

CAMERON PARISH

T15S - R5W

HOG BAYOU

BEACH PRONG

ROCKEFELLER WMA

BLOCK EC0004

EAST CAMERON AREA, REVISED

TRACT 37453 - Cameron Parish, Louisiana

All of the lands now or formerly constituting the beds and bottoms of all water bodies of every nature and description the title of which vests in the State of Louisiana, together with all islands arising therein and other lands formed by accretion or by reliction, where allowed by law, excepting tax adjudicated lands, and not presently under mineral lease on June 8, 2005, situated in Cameron Parish, Louisiana, and more particularly described as follows: Beginning at the Northeast corner of Block 4, East Cameron Area, Revised, said point also being on the Coastline as per the Supreme Court Decree dated June 16, 1975, having Coordinates of X = 1,509,516.10 and Y = 368,912.90; thence Northwesterly on a straight line to a point having Coordinates of X = 1,502,470 and Y = 372,625; thence Northwesterly on a straight line to a point having Coordinates of X = 1,496,700 and Y = 375,770; thence Northwesterly on a straight line to a point on the boundary line or a projection thereof of the Rockefeller Wildlife Management Area and Game Preserve, as claimed by the Louisiana Department of Wildlife and Fisheries; thence along said Boundary line or a projection thereof the following: South 88 degrees 39 minutes 17 seconds East approximately 1184 feet to a point having Coordinates of X = 1,497,260.17 and Y = 376,055.22, South 88 degrees 35 minutes 11 seconds East 2,006.88 feet and South 88 degrees 25 minutes 09 seconds East approximately 267 feet to a point on the current Shoreline of the Gulf of Mexico; thence Southeasterly approximately 11,219 feet along said current Shoreline of the Gulf of Mexico to the intersection of a North/South line having a Coordinate of X = 1,509,516.10; thence South approximately 1,992 feet to the point of beginning, **LESS AND EXCEPT** all that portion, if any, that may lie inside the Rockefeller Wildlife Management Area and Game Preserve, containing approximately **494 acres**, all as more particularly outlined on a plat on file in the Office of Mineral Resources, Department of Natural Resources. All bearings, distances and coordinates are based on Louisiana Coordinate System of 1927, (North or South Zone), where applicable.

NOTE: The above description of the Tract nominated for lease has been provided and corrected, where required, exclusively by the nomination party. Any mineral lease selected from this Tract and awarded by the Louisiana State Mineral Board shall be without warranty of any kind, either express, implied, or statutory, including, but not limited to, the implied warranties of merchantability and fitness for a particular purpose. Should the mineral lease awarded by the Louisiana State Mineral Board be subsequently modified, cancelled or abrogated due to the existence of conflicting leases, operating agreements, private claims or other future obligations or conditions which may affect all or any portion of the leased Tract, it shall not relieve the Lessee of the obligation to pay any bonus due thereon to the Louisiana State Mineral Board, nor shall the Louisiana State Mineral Board be obligated to refund any consideration paid by the Lessor prior to such modification, cancellation, or abrogation, including, but not limited to, bonuses, rentals and royalties.

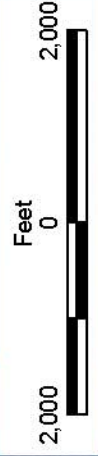
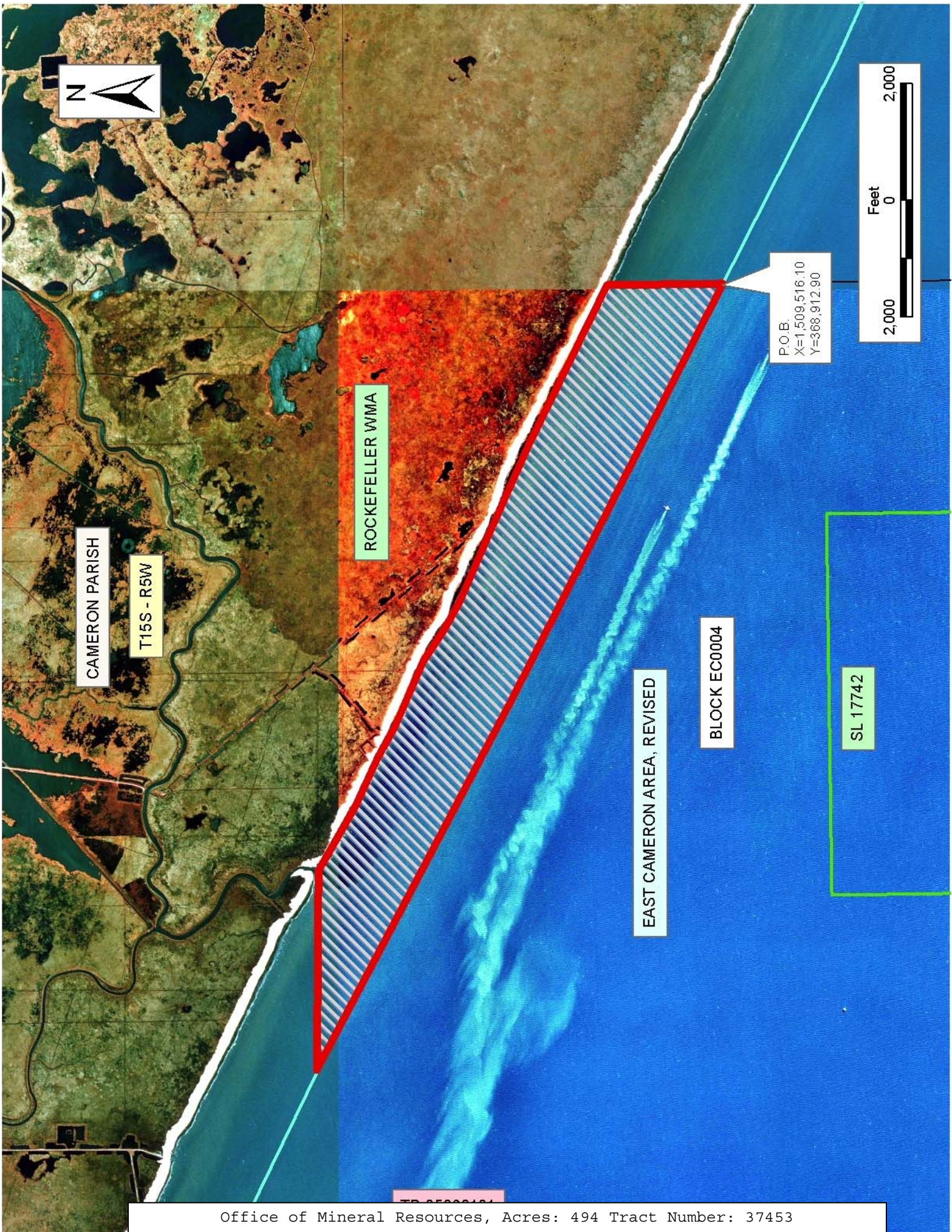
NOTE: This tract is located within the boundaries of a wildlife management area or refuge and any operations conducted thereon in conjunction with this mineral lease may be subject to rules and regulations promulgated by the Department of Wildlife and Fisheries for the protection of fish, birds and other wildlife including, but not necessarily limited to, the following:

1. No activities will be allowed without written authorization from the Louisiana Department of Wildlife and Fisheries. All projects will be coordinated and approved by the appropriate WMA Supervisor prior to any activities on the wildlife management area.
2. Proposed projects will be evaluated on a case by case basis. Modifications to proposed projects may be required including, but not limited to, access routes, spoil placement, well sites, flow lines and other appurtenant structures required by the Louisiana Department of Wildlife and Fisheries.
3. Compensatory mitigation will be required to offset unavoidable wetland impacts.
4. Removal of all structures, facilities, and equipment will be required within 120 days of abandonment unless otherwise agreed to by the Department of Wildlife and Fisheries.
5. No activities will be allowed during the hunting season unless approved by the Department.
6. Compliance with the said WMA regulations will be required unless otherwise specified by the Department.
7. Prior to submitting applications for wetland permits to Federal and State permitting agencies the lease holder shall coordinate project details with the Louisiana Department of Wildlife and Fisheries, Fur and Refuge Division. Contact person for the Department will be Mike Windham at (504) 568-5886.

NOTE: The State of Louisiana does hereby reserve, and this lease shall be subject to, the imprescriptible right of surface use in the nature of a servitude in favor of the Department of Natural Resources, including its Offices and Commissions, for the sole purpose of implementing, constructing, servicing and maintaining approved coastal zone management and/or restoration projects. Utilization of any and all rights derived under this lease by the mineral lessee, its agents, successors or assigns, shall not interfere with nor hinder the reasonable surface use by the Department of Natural Resources, its Offices or Commissions, as herein above reserved.

Applicant: Juanita C. Chatelain

Bidder	Cash Payment	Price/Acre	Rental	Oil	Gas	Other



P.O.B.
X=1,509,516.10
Y=368,912.90

CAMERON PARISH

T15S - R5W

ROCKEFELLER WMA

EAST CAMERON AREA, REVISED

BLOCK EC0004

SL 17742

TRACT 37454 - Cameron Parish, Louisiana

All of the lands now or formerly constituting the beds and bottoms of all water bodies of every nature and description the title of which vests in the State of Louisiana, together with all islands arising therein and other lands formed by accretion or by reliction, where allowed by law, excepting tax adjudicated lands, and not presently under mineral lease on June 8, 2005, situated in Cameron Parish, Louisiana, and more particularly described as follows: Beginning at the Northwest corner of Block 5, East Cameron Area, Revised, said corner also being a point on the Coastline as per the Supreme Court Decree dated June 16, 1975, having Coordinates of X = 1,509,516.10 and Y = 368,912.90; thence North approximately 1,992 feet to a point on the current Shoreline of the Gulf of Mexico; thence Southeasterly approximately 16,321 feet along the said Shoreline to the intersection of a North/South line having a Coordinate of X = 1,524,234.61; thence South approximately 2,082 feet to a point on said Coastline having Coordinates of X = 1,524,234.61 and Y = 361,822.06; thence along said Coastline the following courses: Northwesterly on a straight line to a point having Coordinates of X = 1,513,280 and Y = 366,930 and Northwesterly on a straight line to the point of beginning, **LESS AND EXCEPT** all that portion, if any, that may lie inside the Rockefeller Wildlife Management Area and Game Preserve containing approximately **671 acres**, all as more particularly outlined on a plat on file in the Office of Mineral Resources, Department of Natural Resources. All bearings, distances and coordinates are based on Louisiana Coordinate System of 1927, (North or South Zone), where applicable.

NOTE: The above description of the Tract nominated for lease has been provided and corrected, where required, exclusively by the nomination party. Any mineral lease selected from this Tract and awarded by the Louisiana State Mineral Board shall be without warranty of any kind, either express, implied, or statutory, including, but not limited to, the implied warranties of merchantability and fitness for a particular purpose. Should the mineral lease awarded by the Louisiana State Mineral Board be subsequently modified, cancelled or abrogated due to the existence of conflicting leases, operating agreements, private claims or other future obligations or conditions which may affect all or any portion of the leased Tract, it shall not relieve the Lessee of the obligation to pay any bonus due thereon to the Louisiana State Mineral Board, nor shall the Louisiana State Mineral Board be obligated to refund any consideration paid by the Lessor prior to such modification, cancellation, or abrogation, including, but not limited to, bonuses, rentals and royalties.

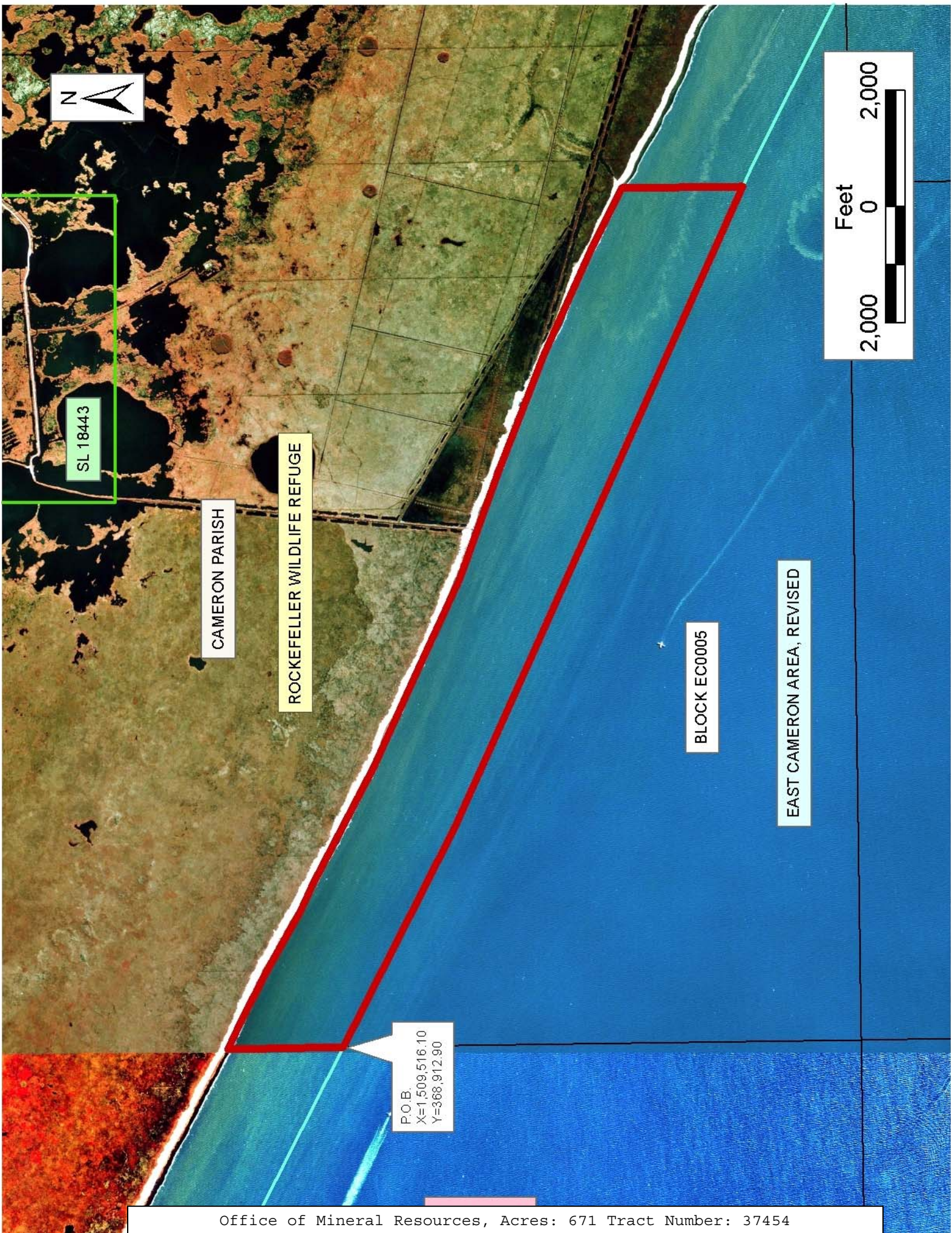
NOTE: This tract is located within the boundaries of a wildlife management area or refuge and any operations conducted thereon in conjunction with this mineral lease may be subject to rules and regulations promulgated by the Department of Wildlife and Fisheries for the protection of fish, birds and other wildlife including, but not necessarily limited to, the following:

1. No activities will be allowed without written authorization from the Louisiana Department of Wildlife and Fisheries. All projects will be coordinated and approved by the appropriate WMA Supervisor prior to any activities on the wildlife management area.
2. Proposed projects will be evaluated on a case by case basis. Modifications to proposed projects may be required including, but not limited to, access routes, spoil placement, well sites, flow lines and other appurtenant structures required by the Louisiana Department of Wildlife and Fisheries.
3. Compensatory mitigation will be required to offset unavoidable wetland impacts.
4. Removal of all structures, facilities, and equipment will be required within 120 days of abandonment unless otherwise agreed to by the Department of Wildlife and Fisheries.
5. No activities will be allowed during the hunting season unless approved by the Department.
6. Compliance with the said WMA regulations will be required unless otherwise specified by the Department.
7. Prior to submitting applications for wetland permits to Federal and State permitting agencies the lease holder shall coordinate project details with the Louisiana Department of Wildlife and Fisheries, Fur and Refuge Division. Contact person for the Department will be Mike Windham at (504) 568-5886.

NOTE: The State of Louisiana does hereby reserve, and this lease shall be subject to, the imprescriptible right of surface use in the nature of a servitude in favor of the Department of Natural Resources, including its Offices and Commissions, for the sole purpose of implementing, constructing, servicing and maintaining approved coastal zone management and/or restoration projects. Utilization of any and all rights derived under this lease by the mineral lessee, its agents, successors or assigns, shall not interfere with nor hinder the reasonable surface use by the Department of Natural Resources, its Offices or Commissions, as herein above reserved.

Applicant: Juanita C. Chatelain

Bidder	Cash Payment	Price/Acre	Rental	Oil	Gas	Other



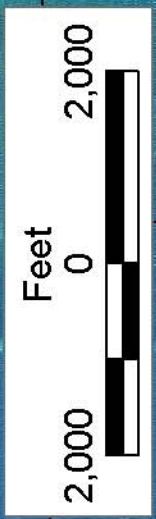
SL 18443

CAMERON PARISH

ROCKEFELLER WILDLIFE REFUGE

BLOCK EC0005

EAST CAMERON AREA, REVISED



P.O.B.
X=1,509,516.10
Y=368,912.90

TRACT 37455 - Plaquemines Parish, Louisiana

All of the lands now or formerly constituting the beds and bottoms of all water bodies of every nature and description the title of which vests in the State of Louisiana, together with all islands arising therein and other lands formed by accretion or by reliction, where allowed by law, excepting tax adjudicated lands, and not presently under mineral lease on June 8, 2005, situated in Plaquemines Parish, Louisiana, and more particularly described as follows: Beginning at a point having Coordinates of X = 2,511,000.00 and Y = 343,000.00; thence South 15,000.00 feet to a point having Coordinates of X = 2,511,000.00 and Y = 328,000.00; thence West approximately 6,168 feet to a point on the boundary of State Lease No. 1319, as amended having a Coordinate of Y = 328,000.00 thence Northwesterly and Northerly along the boundary of said State Lease No. 1319, as amended, to the intersection of an East West line having a Coordinate of Y = 343,000.00; thence East approximately 14,642 feet to the point of beginning, **LESS AND EXCEPT** that portion, if any, of State Lease No. 1319, as amended, that may lie within the above described tract, containing approximately **1,360 acres**, all as more particularly outlined on a plat on file in the Office of Mineral Resources, Department of Natural Resources. All bearings, distances and coordinates are based on Louisiana Coordinate System of 1927, (North or South Zone), where applicable.

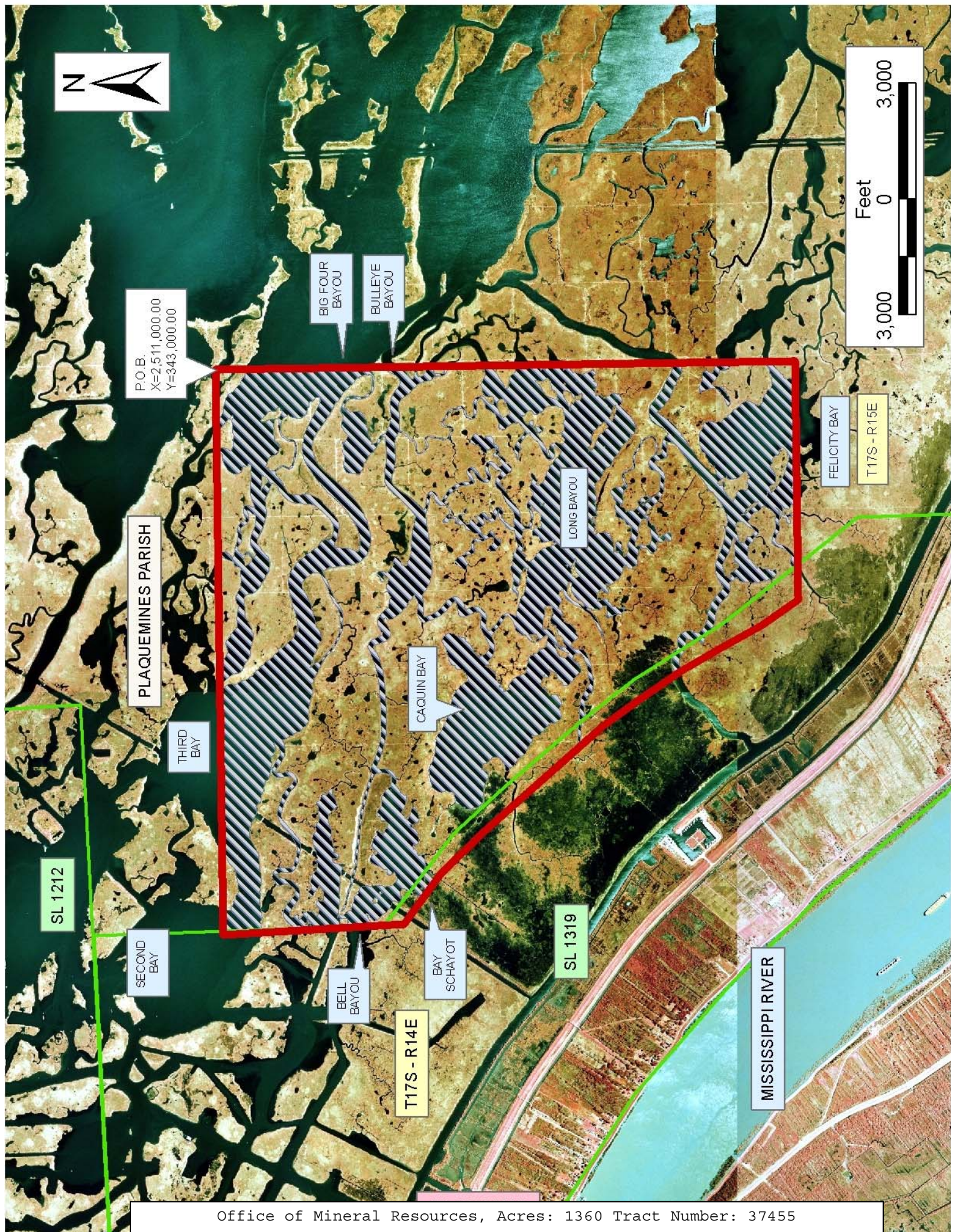
NOTE: The above description of the Tract nominated for lease has been provided and corrected, where required, exclusively by the nomination party. Any mineral lease selected from this Tract and awarded by the Louisiana State Mineral Board shall be without warranty of any kind, either express, implied, or statutory, including, but not limited to, the implied warranties of merchantability and fitness for a particular purpose. Should the mineral lease awarded by the Louisiana State Mineral Board be subsequently modified, cancelled or abrogated due to the existence of conflicting leases, operating agreements, private claims or other future obligations or conditions which may affect all or any portion of the leased Tract, it shall not relieve the Lessee of the obligation to pay any bonus due thereon to the Louisiana State Mineral Board, nor shall the Louisiana State Mineral Board be obligated to refund any consideration paid by the Lessor prior to such modification, cancellation, or abrogation, including, but not limited to, bonuses, rentals and royalties.

NOTE: The State of Louisiana does hereby reserve, and this lease shall be subject to, the imprescriptible right of surface use in the nature of a servitude in favor of the Department of Natural Resources, including its Offices and Commissions, for the sole purpose of implementing, constructing, servicing and maintaining approved coastal zone management and/or restoration projects. Utilization of any and all rights derived under this lease by the mineral lessee, its agents, successors or assigns, shall not interfere with nor hinder the reasonable surface use by the Department of Natural Resources, its Offices or Commissions, as herein above reserved.

NOTE: The Department of Wildlife and Fisheries has designated certain areas in the coastal waters of the State of Louisiana as Oyster Seed Bed Areas. The exact location of those Seed Bed Areas must be obtained from the Department of Wildlife and Fisheries and any work done under a mineral lease from the State of Louisiana may necessarily be conducted in conformity with the rules and regulations promulgated by the said Department of Wildlife and Fisheries for Oyster Seed Bed Areas.

Applicant: Bohemian Energy Co.

Bidder	Cash Payment	Price/Acre	Rental	Oil	Gas	Other



P.O.B.
X=2,511,000.00
Y=343,000.00

PLAQUEMINES PARISH

THIRD BAY

SECOND BAY

BIG FOUR BAYOU

BULLEYE BAYOU

LONG BAYOU

CAQUIN BAY

BELL BAYOU

BAY SCHAYOT

FELICITY BAY

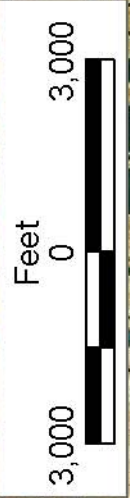
T17S - R15E

SL 1212

SL 1319

T17S - R14E

MISSISSIPPI RIVER



TRACT 37456 - Plaquemines Parish, Louisiana

All of the lands now or formerly constituting the beds and bottoms of all water bodies of every nature and description the title of which vests in the State of Louisiana, together with all islands arising therein and other lands formed by accretion or by reliction, where allowed by law, excepting tax adjudicated lands, and not presently under mineral lease on June 8, 2005, situated in Plaquemines Parish, Louisiana, and more particularly described as follows: Beginning at a point having Coordinates of X = 2,511,000.00 and Y = 343,000.00; thence East 12,000.00 feet to a point having Coordinates of X = 2,523,000.00 and Y = 343,000.00; thence South 15,000.00 feet to a point having Coordinates of X = 2,523,000.00 and Y = 328,000.00; thence West 12,000.00 feet to a point having Coordinates of X = 2,511,000.00 and Y = 328,000.00; thence North 15,000.00 feet to the point of beginning, containing approximately **2,370 acres**, all as more particularly outlined on a plat on file in the Office of Mineral Resources, Department of Natural Resources. All bearings, distances and coordinates are based on Louisiana Coordinate System of 1927, (North or South Zone), where applicable.

NOTE: The above description of the Tract nominated for lease has been provided and corrected, where required, exclusively by the nomination party. Any mineral lease selected from this Tract and awarded by the Louisiana State Mineral Board shall be without warranty of any kind, either express, implied, or statutory, including, but not limited to, the implied warranties of merchantability and fitness for a particular purpose. Should the mineral lease awarded by the Louisiana State Mineral Board be subsequently modified, cancelled or abrogated due to the existence of conflicting leases, operating agreements, private claims or other future obligations or conditions which may affect all or any portion of the leased Tract, it shall not relieve the Lessee of the obligation to pay any bonus due thereon to the Louisiana State Mineral Board, nor shall the Louisiana State Mineral Board be obligated to refund any consideration paid by the Lessor prior to such modification, cancellation, or abrogation, including, but not limited to, bonuses, rentals and royalties.

NOTE: The State of Louisiana does hereby reserve, and this lease shall be subject to, the imprescriptible right of surface use in the nature of a servitude in favor of the Department of Natural Resources, including its Offices and Commissions, for the sole purpose of implementing, constructing, servicing and maintaining approved coastal zone management and/or restoration projects. Utilization of any and all rights derived under this lease by the mineral lessee, its agents, successors or assigns, shall not interfere with nor hinder the reasonable surface use by the Department of Natural Resources, its Offices or Commissions, as herein above reserved.

NOTE: The Department of Wildlife and Fisheries has designated certain areas in the coastal waters of the State of Louisiana as Oyster Seed Bed Areas. The exact location of those Seed Bed Areas must be obtained from

the Department of Wildlife and Fisheries and any work done under a mineral lease from the State of Louisiana may necessarily be conducted in conformity with the rules and regulations promulgated by the said Department of Wildlife and Fisheries for Oyster Seed Bed Areas.

Applicant: Bohemian Energy Co.

Bidder	Cash Payment	Price/Acre	Rental	Oil	Gas	Other



P.O.B.
X=2,511,000.00
Y=343,000.00

PLAQUEMINES PARISH

GRAND POINT BAY

FRANCIS MARTIN BAYOU

FONTELLE BAYOU

ISALAD BAY

BATTLE GROUND BAY

BIG FOUR BAYOU

BULLSEYE BAYOU

LONG BAYOU

BAY LAW

SL 17340

T17S - R15E

SL 1319



TRACT 37457 - Cameron Parish, Louisiana

All of the lands now or formerly constituting the beds and bottoms of all water bodies of every nature and description the title of which vests in the State of Louisiana, together with all islands arising therein and other lands formed by accretion or by reliction, where allowed by law, excepting tax adjudicated lands, and not presently under mineral lease on June 8, 2005, situated in Cameron Parish, Louisiana, and more particularly described as follows: Beginning at a point on the Coastline as per the Supreme Court Decree dated June 16, 1975, having Coordinates of X = 1,573,700.00 and Y = 339,575.85; thence along said Coastline the following courses: Northwesterly on a straight line to a point having Coordinates of X = 1,571,630 and Y = 340,335; Northwesterly on a straight line to a point having Coordinates of X = 1,570,480 and Y = 340,905; Northwesterly on a straight line to a point having Coordinates of X = 1,567,695 and Y = 341,990; Northwesterly on a straight line to a point having Coordinates of X = 1,566,890 and Y = 342,490; Northwesterly on a straight line to a point having Coordinates of X = 1,566,375 and Y = 342,810; Northwesterly on a straight line to a point having Coordinates of X = 1,564,160 and Y = 343,480; Northwesterly on a straight line to a point having Coordinates of X = 1,562,680 and Y = 344,195; Northwesterly on a straight line to a point having Coordinates of X = 1,558,720 and Y = 345,375; and Northwesterly on a straight line to a point having Coordinates of X = 1,556,065.58 and Y = 346,469.08; thence North approximately 1,793 feet to a point on the current Shoreline of the Gulf of Mexico; thence Southeasterly approximately 19,054 feet along the current Shoreline of the Gulf of Mexico to the intersection with a North South line having a Coordinate of X = 1,573,700.00; thence South approximately 1,839 feet to the Point of Beginning, containing approximately **735 acres**, all as more particularly outlined on a plat on file in the Office of Mineral Resources, Department of Natural Resources. All bearings, distances and coordinates are based on Louisiana Coordinate System of 1927, (North or South Zone), where applicable.

NOTE: The above description of the Tract nominated for lease has been provided and corrected, where required, exclusively by the nomination party. Any mineral lease selected from this Tract and awarded by the Louisiana State Mineral Board shall be without warranty of any kind, either express, implied, or statutory, including, but not limited to, the implied warranties of merchantability and fitness for a particular purpose. Should the mineral lease awarded by the Louisiana State Mineral Board be subsequently modified, cancelled or abrogated due to the existence of conflicting leases, operating agreements, private claims or other future obligations or conditions which may affect all or any portion of the leased Tract, it shall not relieve the Lessee of the obligation to pay any bonus due thereon to the Louisiana State Mineral Board, nor shall the Louisiana State Mineral Board be obligated to refund any consideration paid by the Lessor prior to such modification, cancellation, or abrogation, including, but not limited to, bonuses, rentals and royalties.

NOTE: The Office of Mineral Resources will require a minimum bonus of \$ per acre and a minimum royalty of %.

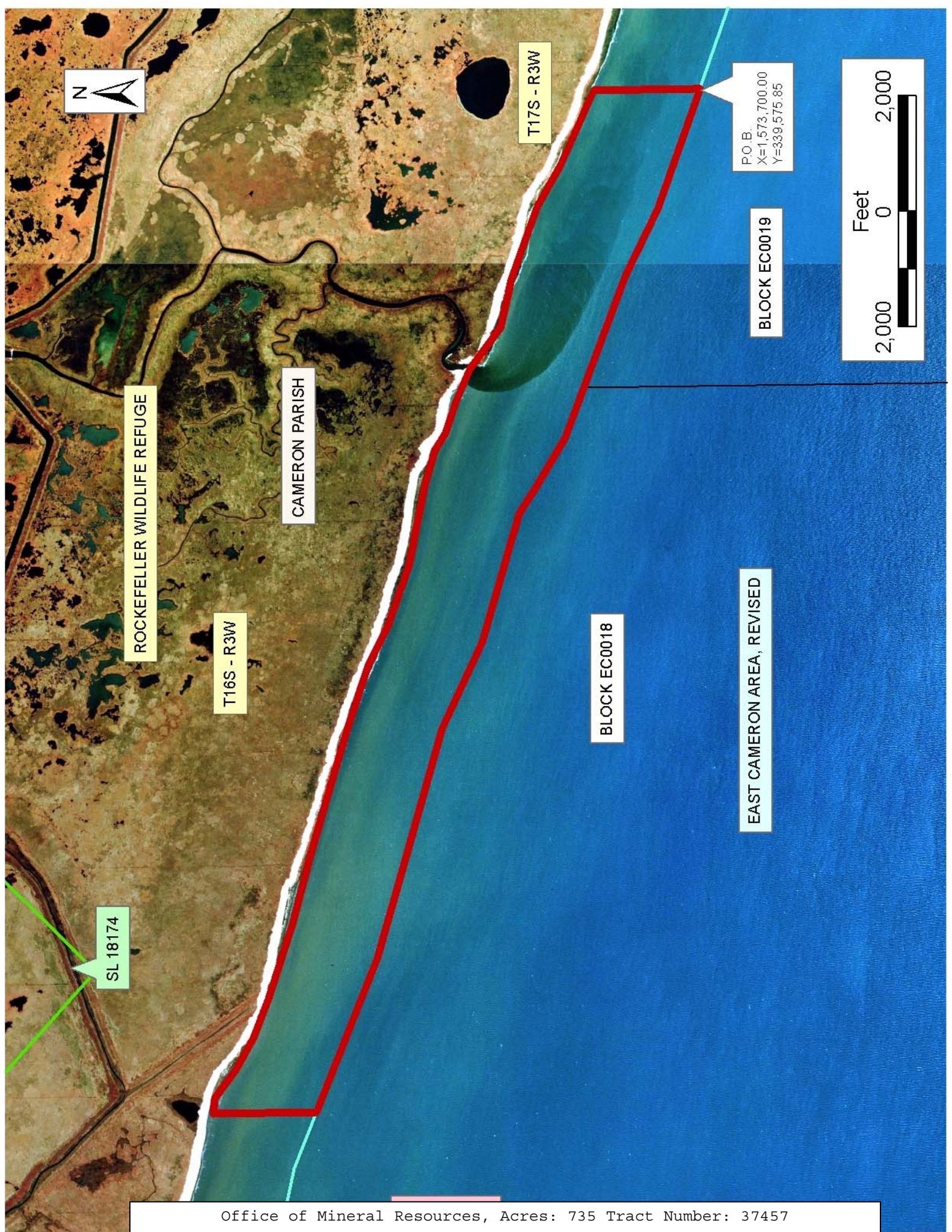
NOTE: This tract is located within the boundaries of a wildlife management area or refuge and any operations conducted thereon in conjunction with this mineral lease may be subject to rules and regulations promulgated by the Department of Wildlife and Fisheries for the protection of fish, birds and other wildlife including, but not necessarily limited to, the following:

1. No activities will be allowed without written authorization from the Louisiana Department of Wildlife and Fisheries. All projects will be coordinated and approved by the appropriate WMA Supervisor prior to any activities on the wildlife management area.
2. Proposed projects will be evaluated on a case by case basis. Modifications to proposed projects may be required including, but not limited to, access routes, spoil placement, well sites, flow lines and other appurtenant structures required by the Louisiana Department of Wildlife and Fisheries.
3. Compensatory mitigation will be required to offset unavoidable wetland impacts.
4. Removal of all structures, facilities, and equipment will be required within 120 days of abandonment unless otherwise agreed to by the Department of Wildlife and Fisheries.
5. No activities will be allowed during the hunting season unless approved by the Department.
6. Compliance with the said WMA regulations will be required unless otherwise specified by the Department.
7. Prior to submitting applications for wetland permits to Federal and State permitting agencies the lease holder shall coordinate project details with the Louisiana Department of Wildlife and Fisheries, Fur and Refuge Division. Contact person for the Department will be Mike Windham at (504) 568-5886.

NOTE: The State of Louisiana does hereby reserve, and this lease shall be subject to, the imprescriptible right of surface use in the nature of a servitude in favor of the Department of Natural Resources, including its Offices and Commissions, for the sole purpose of implementing, constructing, servicing and maintaining approved coastal zone management and/or restoration projects. Utilization of any and all rights derived under this lease by the mineral lessee, its agents, successors or assigns, shall not interfere with nor hinder the reasonable surface use by the Department of Natural Resources, its Offices or Commissions, as herein above reserved.

Applicant: Gulf Coast Oil Properties, Inc.

Bidder	Cash Payment	Price/Acre	Rental	Oil	Gas	Other



ROCKEFELLER WILDLIFE REFUGE

CAMERON PARISH

T16S - R3W

T17S - R3W

SL 18174

BLOCK EC0018

EAST CAMERON AREA, REVISED

BLOCK EC0019

P.O.B.
X=1,573,700.00
Y=339,575.85

