

TRACT 37438 - Cameron Parish, Louisiana

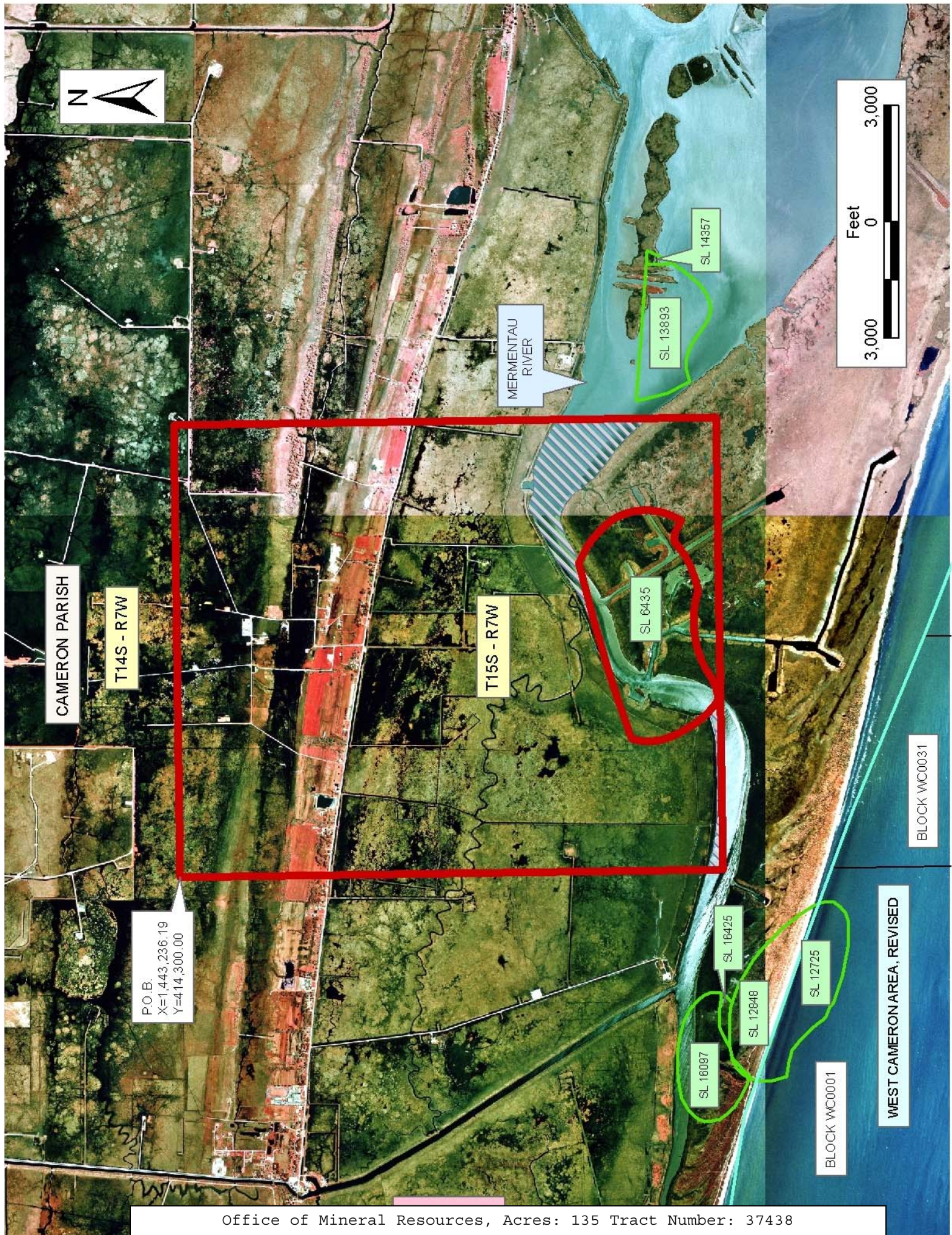
All of the lands now or formerly constituting the beds and bottoms of all water bodies of every nature and description the title of which vests in the State of Louisiana, together with all islands arising therein and other lands formed by accretion or by reliction, where allowed by law, excepting tax adjudicated lands, and not presently under mineral lease on June 8, 2005, situated in Cameron Parish, Louisiana, and more particularly described as follows: Beginning at a point having Coordinates of X = 1,443,236.19 and Y = 414,300.00; thence East 11,663.81 feet to a point having Coordinates of X = 1,454,900.00 and Y = 414,300.00; thence South 14,000.00 feet to a point having Coordinates of X = 1,454,900.00 and Y = 400,300.00; thence West 11,663.81 feet to a point having Coordinates of X = 1,443,236.19 and Y = 400,300.00; thence North 14,000.00 feet to the Point of Beginning, **LESS AND EXCEPT** all of State Lease No. 6435, as amended, lying within the above described tract, containing approximately **135 acres**, all as more particularly outlined on a plat on file in the Office of Mineral Resources, Department of Natural Resources. All bearings, distances and coordinates are based on Louisiana Coordinate System of 1927, (North or South Zone), where applicable.

NOTE: The above description of the Tract nominated for lease has been provided and corrected, where required, exclusively by the nomination party. Any mineral lease selected from this Tract and awarded by the Louisiana State Mineral Board shall be without warranty of any kind, either express, implied, or statutory, including, but not limited to, the implied warranties of merchantability and fitness for a particular purpose. Should the mineral lease awarded by the Louisiana State Mineral Board be subsequently modified, cancelled or abrogated due to the existence of conflicting leases, operating agreements, private claims or other future obligations or conditions which may affect all or any portion of the leased Tract, it shall not relieve the Lessee of the obligation to pay any bonus due thereon to the Louisiana State Mineral Board, nor shall the Louisiana State Mineral Board be obligated to refund any consideration paid by the Lessor prior to such modification, cancellation, or abrogation, including, but not limited to, bonuses, rentals and royalties.

NOTE: The State of Louisiana does hereby reserve, and this lease shall be subject to, the imprescriptible right of surface use in the nature of a servitude in favor of the Department of Natural Resources, including its Offices and Commissions, for the sole purpose of implementing, constructing, servicing and maintaining approved coastal zone management and/or restoration projects. Utilization of any and all rights derived under this lease by the mineral lessee, its agents, successors or assigns, shall not interfere with nor hinder the reasonable surface use by the Department of Natural Resources, its Offices or Commissions, as herein above reserved.

Bidder	Cash Payment	Price/ Acre	Rental	Oil	Gas	Other
--------	-----------------	----------------	--------	-----	-----	-------

Applicant: Mouton Land Services



TRACT 37439 - Cameron Parish, Louisiana

All of the lands now or formerly constituting the beds and bottoms of all water bodies of every nature and description the title of which vests in the State of Louisiana, together with all islands arising therein and other lands formed by accretion or by reliction, where allowed by law, excepting tax adjudicated lands, and not presently under mineral lease on June 8, 2005, situated in Cameron Parish, Louisiana, and more particularly described as follows: Beginning at a point having Coordinates of X = 1,465,900.00 and Y = 402,500.00; thence West 11,000.00 feet to a point having Coordinates of X = 1,454,900.00 and Y = 402,500.00; thence North 11,800.00 feet to a point having Coordinates of X = 1,454,900.00 and Y = 414,300.00; thence East 11,000.00 feet to a point having Coordinates of X = 1,465,900.00 and Y = 414,300.00; thence South 11,800.00 feet to the Point of Beginning, containing approximately **194 acres**, all as more particularly outlined on a plat on file in the Office of Mineral Resources, Department of Natural Resources. All bearings, distances and coordinates are based on Louisiana Coordinate System of 1927, (North or South Zone), where applicable.

NOTE: The above description of the Tract nominated for lease has been provided and corrected, where required, exclusively by the nomination party. Any mineral lease selected from this Tract and awarded by the Louisiana State Mineral Board shall be without warranty of any kind, either express, implied, or statutory, including, but not limited to, the implied warranties of merchantability and fitness for a particular purpose. Should the mineral lease awarded by the Louisiana State Mineral Board be subsequently modified, cancelled or abrogated due to the existence of conflicting leases, operating agreements, private claims or other future obligations or conditions which may affect all or any portion of the leased Tract, it shall not relieve the Lessee of the obligation to pay any bonus due thereon to the Louisiana State Mineral Board, nor shall the Louisiana State Mineral Board be obligated to refund any consideration paid by the Lessor prior to such modification, cancellation, or abrogation, including, but not limited to, bonuses, rentals and royalties.

NOTE: The State of Louisiana does hereby reserve, and this lease shall be subject to, the imprescriptible right of surface use in the nature of a servitude in favor of the Department of Natural Resources, including its Offices and Commissions, for the sole purpose of implementing, constructing, servicing and maintaining approved coastal zone management and/or restoration projects. Utilization of any and all rights derived under this lease by the mineral lessee, its agents, successors or assigns, shall not interfere with nor hinder the reasonable surface use by the Department of Natural Resources, its Offices or Commissions, as herein above reserved.

Applicant: Mouton Land Services

Bidder	Cash Payment	Price/ Acre	Rental	Oil	Gas	Other



TRACT 37440 - Cameron Parish, Louisiana

All of the lands now or formerly constituting the beds and bottoms of all water bodies of every nature and description the title of which vests in the State of Louisiana, together with all islands arising therein and other lands formed by accretion or by reliction, where allowed by law, excepting tax adjudicated lands, and not presently under mineral lease on June 8, 2005, situated in Cameron Parish, Louisiana, and more particularly described as follows: Beginning at a point having Coordinates of X = 1,443,236.19 and Y = 414,300.00; thence South 16,811.44 feet to a point on the Coastline as per the Supreme Court Decree dated June 16, 1975 having Coordinates of X = 1,443,236.19 and Y = 397,488.56; thence Northwesterly on a straight line to the Southeast corner of State Lease No. 12848, as amended, having Coordinates of X = 1,442,322.05 and Y = 397,833.84; thence along the boundary of said State Lease No. 12848 the following: Northerly and Northwesterly to the Southeast corner of State Lease No. 16425, as amended, having Coordinates of X = 1,439,794.44 and Y = 400,108.61; thence along the boundary of said State Lease No. 16425 the following: North 48 degrees 21 minutes 57 seconds East 230.88 feet and North 29 degrees 44 minutes 42 seconds East 123.27 feet to a point on the boundary of State Lease No. 16097, as amended, having coordinates of X = 1,440,028.16 and Y = 400,369.03; thence along the boundary of said State Lease No. 16097 the following: Northerly, Northwesterly, Westerly, Southwesterly, Southerly and Southeasterly to a point having Coordinates of X = 1,437,677.00 and Y = 399,757.00; thence South 49 degrees 01 minutes 21 seconds East 186.65 feet to a point on the boundary of said State Lease No. 12848, having Coordinates of X = 1,437,817.92 and Y = 399,634.60; thence South 11 degrees 18 minutes 36 seconds West 141.85 feet along the Westerly boundary of said State Lease No. 12848 to a point having Coordinates of X = 1,437,790.10 and Y = 399,495.50; thence Northwesterly on a straight line to a point having Coordinates of X = 1,436,899 and Y = 399,820; thence Northwesterly on a straight line to a point having Coordinates of X = 1,432,300.00 and Y = 400,609.18; thence North 13,690.82 feet to a point having Coordinates of X = 1,432,300.00 and Y = 414,300.00; thence East 10,936.19 feet to the point of beginning, **LESS AND EXCEPT** all those portions of State Lease No. 12848, as amended, State Lease No. 13465, as amended, State Lease No. 16097, as amended, and State Lease NO. 16425, as amended, that may lie within the above described tract, containing approximately **101 acres**, all as more particularly outlined on a plat on file in the Office of Mineral Resources, Department of Natural Resources. All bearings, distances and coordinates are based on Louisiana Coordinate System of 1927, (North or South Zone), where applicable.

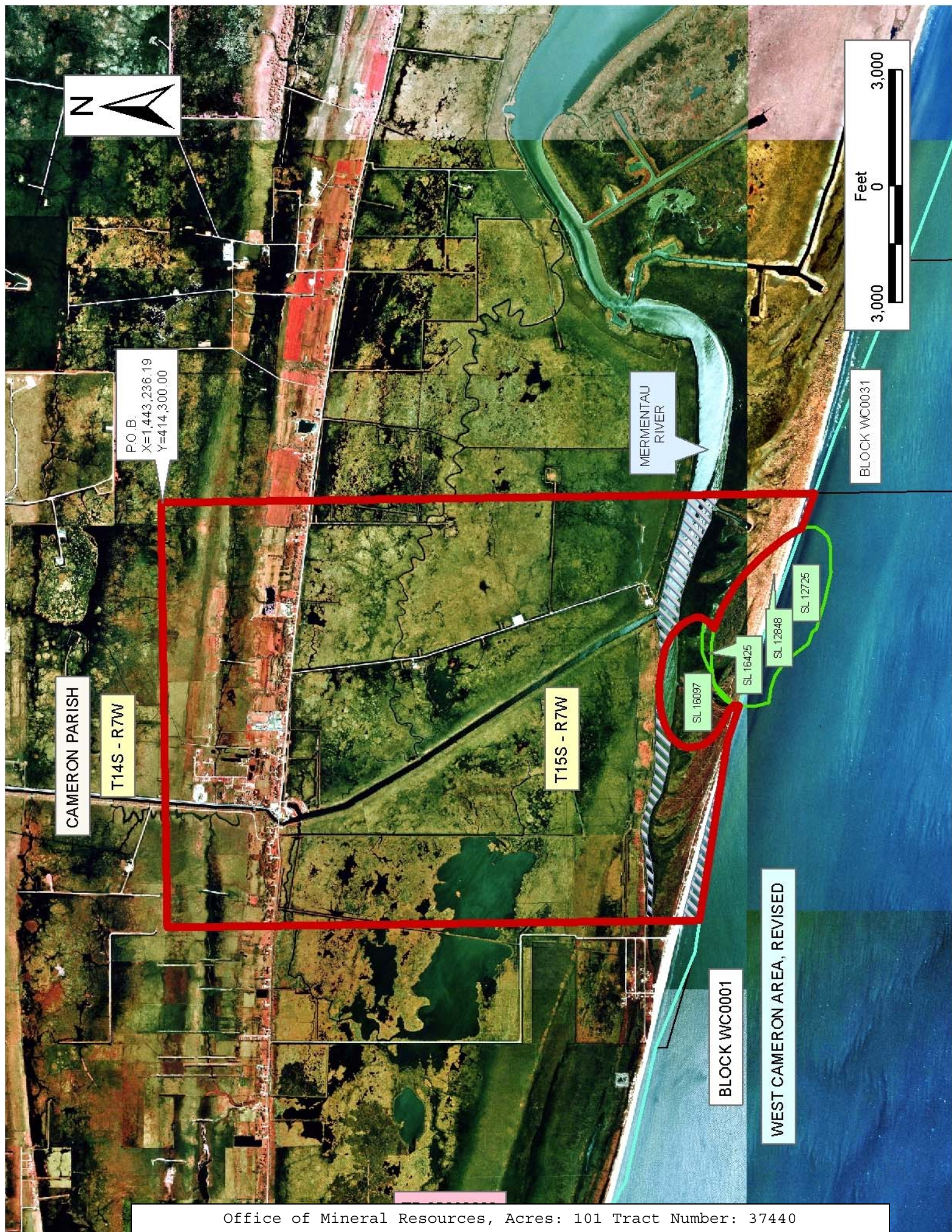
NOTE: The above description of the Tract nominated for lease has been provided and corrected, where required, exclusively by the nomination party. Any mineral lease selected from this Tract and awarded by the Louisiana State Mineral Board shall be without warranty of any kind, either express, implied, or statutory, including, but not limited to, the implied warranties of merchantability and fitness for a particular purpose. Should the mineral lease awarded by the Louisiana State Mineral

Board be subsequently modified, cancelled or abrogated due to the existence of conflicting leases, operating agreements, private claims or other future obligations or conditions which may affect all or any portion of the leased Tract, it shall not relieve the Lessee of the obligation to pay any bonus due thereon to the Louisiana State Mineral Board, nor shall the Louisiana State Mineral Board be obligated to refund any consideration paid by the Lessor prior to such modification, cancellation, or abrogation, including, but not limited to, bonuses, rentals and royalties.

NOTE: The State of Louisiana does hereby reserve, and this lease shall be subject to, the imprescriptible right of surface use in the nature of a servitude in favor of the Department of Natural Resources, including its Offices and Commissions, for the sole purpose of implementing, constructing, servicing and maintaining approved coastal zone management and/or restoration projects. Utilization of any and all rights derived under this lease by the mineral lessee, its agents, successors or assigns, shall not interfere with nor hinder the reasonable surface use by the Department of Natural Resources, its Offices or Commissions, as herein above reserved.

Applicant: Mouton Land Services

Bidder	Cash Payment	Price/ Acre	Rental	Oil	Gas	Other



TRACT 37441 - St. Mary Parish, Louisiana

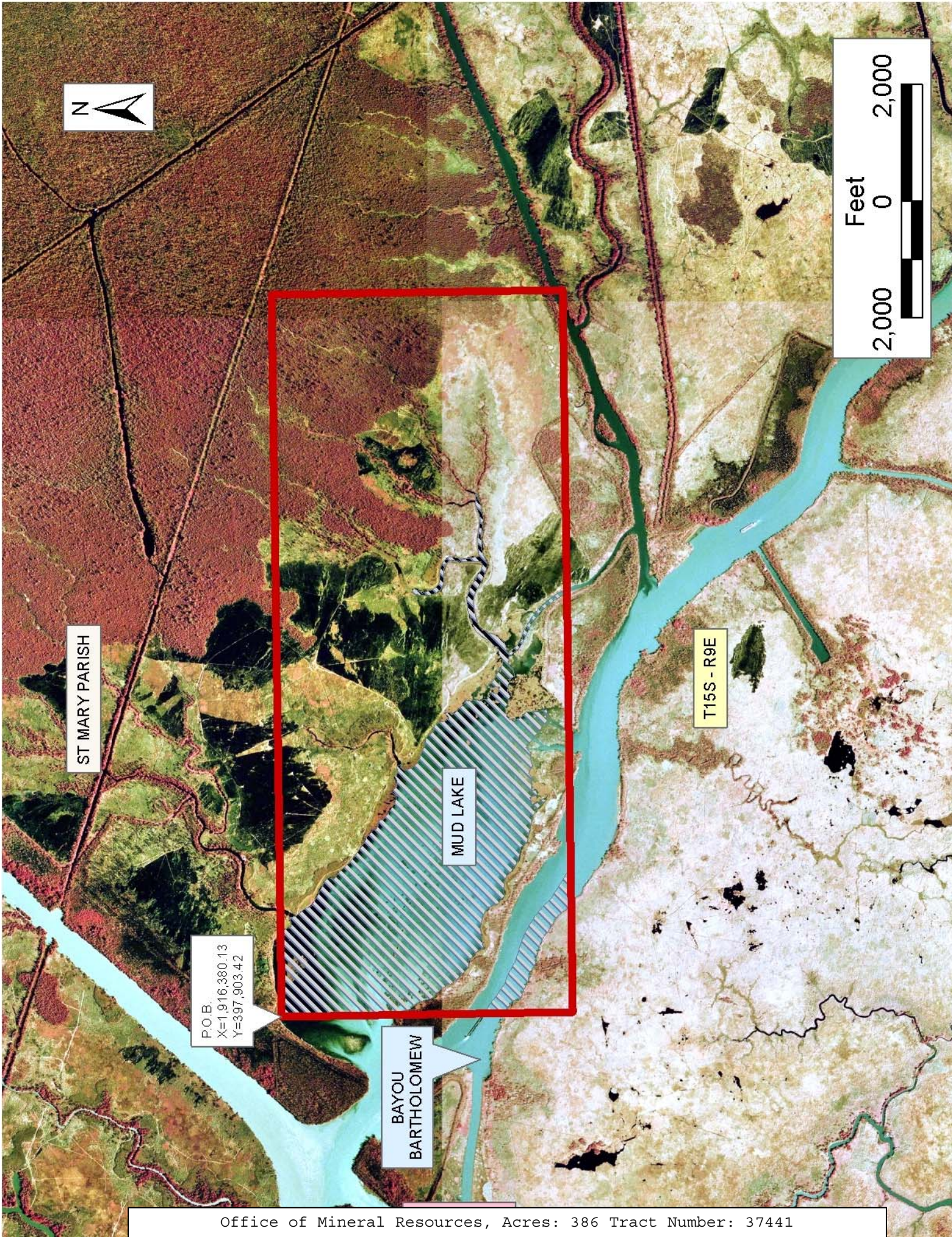
All of the lands now or formerly constituting the beds and bottoms of all water bodies of every nature and description the title of which vests in the State of Louisiana, together with all islands arising therein and other lands formed by accretion or by reliction, where allowed by law, excepting tax adjudicated lands, and not presently under mineral lease on June 8, 2005, situated in St. Mary Parish, Louisiana, and more particularly described as follows: Beginning at a point having Coordinates of X = 1,916,380.13 and Y = 397,903.42; thence East 12,381.60 feet to a point having Coordinates of X = 1,928,761.73 and Y = 397,903.42; thence South 4,982.52 feet to a point having Coordinates of X = 1,928,761.73 and Y = 392,920.90; thence West 12,381.60 feet to a point having Coordinates of X = 1,916,380.13 and Y = 392,920.90; thence North 4,982.52 feet to the point of beginning containing approximately **386 acres**, all as more particularly outlined on a plat on file in the Office of Mineral Resources, Department of Natural Resources. All bearings, distances and coordinates are based on Louisiana Coordinate System of 1927, (North or South Zone), where applicable.

NOTE: The above description of the Tract nominated for lease has been provided and corrected, where required, exclusively by the nomination party. Any mineral lease selected from this Tract and awarded by the Louisiana State Mineral Board shall be without warranty of any kind, either express, implied, or statutory, including, but not limited to, the implied warranties of merchantability and fitness for a particular purpose. Should the mineral lease awarded by the Louisiana State Mineral Board be subsequently modified, cancelled or abrogated due to the existence of conflicting leases, operating agreements, private claims or other future obligations or conditions which may affect all or any portion of the leased Tract, it shall not relieve the Lessee of the obligation to pay any bonus due thereon to the Louisiana State Mineral Board, nor shall the Louisiana State Mineral Board be obligated to refund any consideration paid by the Lessor prior to such modification, cancellation, or abrogation, including, but not limited to, bonuses, rentals and royalties.

NOTE: The State of Louisiana does hereby reserve, and this lease shall be subject to, the imprescriptible right of surface use in the nature of a servitude in favor of the Department of Natural Resources, including its Offices and Commissions, for the sole purpose of implementing, constructing, servicing and maintaining approved coastal zone management and/or restoration projects. Utilization of any and all rights derived under this lease by the mineral lessee, its agents, successors or assigns, shall not interfere with nor hinder the reasonable surface use by the Department of Natural Resources, its Offices or Commissions, as herein above reserved.

Applicant: Coastal Oil & Gas Properties, Inc.

Bidder	Cash Payment	Price/ Acre	Rental	Oil	Gas	Other



TRACT 37442 - Cameron Parish, Louisiana

All of the lands now or formerly constituting the beds and bottoms of all water bodies of every nature and description the title of which vests in the State of Louisiana, together with all islands arising therein and other lands formed by accretion or by reliction, where allowed by law, excepting tax adjudicated lands, and not presently under mineral lease on June 8, 2005, situated in Cameron Parish, Louisiana, and more particularly described as follows: Beginning at a point having Coordinates of X = 1,465,900.00 and Y = 402,500.00; thence South 9,900.00 feet to a point having Coordinates of X = 1,465,900.00 and Y = 392,600.00; thence West 5,465.00 feet to a point having Coordinates of X = 1,460,435.00 and Y = 392,600.00; thence South 1,340.00 feet to a point on the Coastline as per the Supreme Court Decree dated June 16, 1975 having Coordinates of X = 1,460,435.00 and Y = 391,260.00; thence Northwesterly on a straight line to a point having Coordinates of X = 1,454,900.00 and Y = 392,825.19; thence North 9,674.81 feet to a point having Coordinates of X = 1,454,900.00 and Y = 402,500.00; thence East 11,000.00 feet to the point of beginning, **LESS AND EXCEPT** all of State Lease No. 13893, as amended, and State Lease No. 14357, as amended, lying within the above described tract, containing approximately **1,378 acres**, all as more particularly outlined on a plat on file in the Office of Mineral Resources, Department of Natural Resources. All bearings, distances and coordinates are based on Louisiana Coordinate System of 1927, (North or South Zone), where applicable.

NOTE: The above description of the Tract nominated for lease has been provided and corrected, where required, exclusively by the nomination party. Any mineral lease selected from this Tract and awarded by the Louisiana State Mineral Board shall be without warranty of any kind, either express, implied, or statutory, including, but not limited to, the implied warranties of merchantability and fitness for a particular purpose. Should the mineral lease awarded by the Louisiana State Mineral Board be subsequently modified, cancelled or abrogated due to the existence of conflicting leases, operating agreements, private claims or other future obligations or conditions which may affect all or any portion of the leased Tract, it shall not relieve the Lessee of the obligation to pay any bonus due thereon to the Louisiana State Mineral Board, nor shall the Louisiana State Mineral Board be obligated to refund any consideration paid by the Lessor prior to such modification, cancellation, or abrogation, including, but not limited to, bonuses, rentals and royalties.

NOTE: The State of Louisiana does hereby reserve, and this lease shall be subject to, the imprescriptible right of surface use in the nature of a servitude in favor of the Department of Natural Resources, including its Offices and Commissions, for the sole purpose of implementing, constructing, servicing and maintaining approved coastal zone management and/or restoration projects. Utilization of any and all rights derived under this lease by the mineral lessee, its agents, successors or assigns, shall not interfere with nor hinder the reasonable surface use by the

Department of Natural Resources, its Offices or Commissions, as herein above reserved.

Applicant: Mouton Land Services

Bidder	Cash Payment	Price/ Acre	Rental	Oil	Gas	Other



TRACT 37443 - Cameron Parish, Louisiana

All of the lands now or formerly constituting the beds and bottoms of all water bodies of every nature and description the title of which vests in the State of Louisiana, together with all islands arising therein and other lands formed by accretion or by reliction, where allowed by law, excepting tax adjudicated lands, and not presently under mineral lease on June 8, 2005, situated in Cameron Parish, Louisiana, and more particularly described as follows: Beginning at a point having Coordinates of X = 1,454,900.00 and Y = 400,300.00; thence South 7,474.81 feet to a point on the Coastline as per the Supreme Court Decree dated June 16, 1975 having Coordinates of X = 1,454,900.00 and Y = 392,825.19; thence along said Coastline the following courses: Northwesterly in a straight line to a point having Coordinates of X = 1,454,105 and Y = 393,050; Northwesterly on a straight line to a point having Coordinates of X = 1,449,935 and Y = 394,700; Northwesterly on a straight line to a point having Coordinates of X = 1,444,715 and Y = 396,930; and Northwesterly on a straight line to a point having Coordinates of X = 1,443,236.19 and Y = 397,488.56; thence North 2,811.44 feet to a point having Coordinates of X = 1,443,236.19 and Y = 400,300.00; thence East 11,663.81 feet to the point of beginning, containing approximately **353 acres**, all as more particularly outlined on a plat on file in the Office of Mineral Resources, Department of Natural Resources. All bearings, distances and coordinates are based on Louisiana Coordinate System of 1927, (North or South Zone), where applicable.

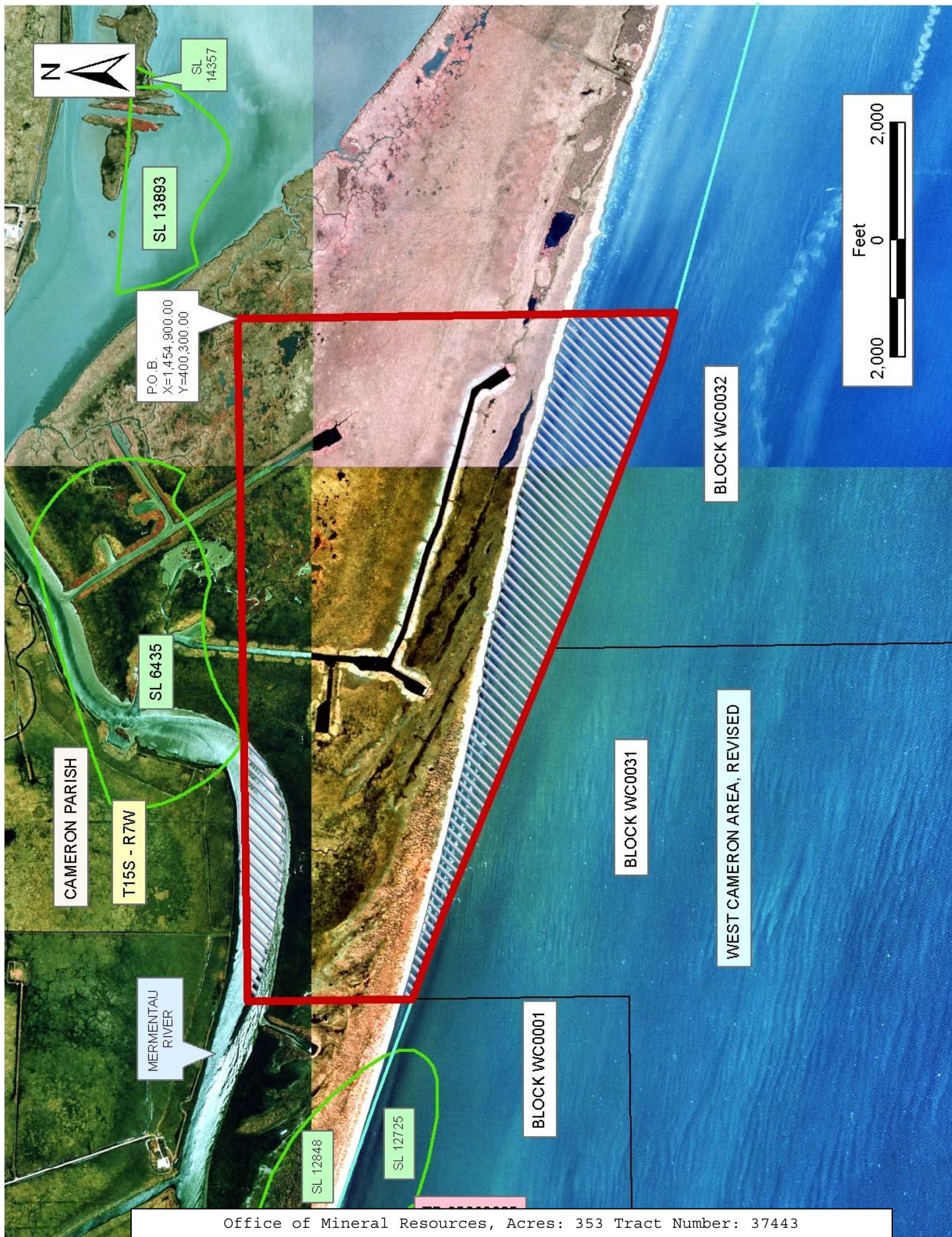
NOTE: The above description of the Tract nominated for lease has been provided and corrected, where required, exclusively by the nomination party. Any mineral lease selected from this Tract and awarded by the Louisiana State Mineral Board shall be without warranty of any kind, either express, implied, or statutory, including, but not limited to, the implied warranties of merchantability and fitness for a particular purpose. Should the mineral lease awarded by the Louisiana State Mineral Board be subsequently modified, cancelled or abrogated due to the existence of conflicting leases, operating agreements, private claims or other future obligations or conditions which may affect all or any portion of the leased Tract, it shall not relieve the Lessee of the obligation to pay any bonus due thereon to the Louisiana State Mineral Board, nor shall the Louisiana State Mineral Board be obligated to refund any consideration paid by the Lessor prior to such modification, cancellation, or abrogation, including, but not limited to, bonuses, rentals and royalties.

NOTE: The State of Louisiana does hereby reserve, and this lease shall be subject to, the imprescriptible right of surface use in the nature of a servitude in favor of the Department of Natural Resources, including its Offices and Commissions, for the sole purpose of implementing, constructing, servicing and maintaining approved coastal zone management and/or restoration projects. Utilization of any and all rights derived under this lease by the mineral lessee, its agents, successors or assigns, shall not interfere with nor hinder the reasonable surface use by the

Department of Natural Resources, its Offices or Commissions, as herein above reserved.

Applicant: Mouton Land Services

Bidder	Cash Payment	Price/ Acre	Rental	Oil	Gas	Other



TRACT 37444 - St. Mary Parish, Louisiana

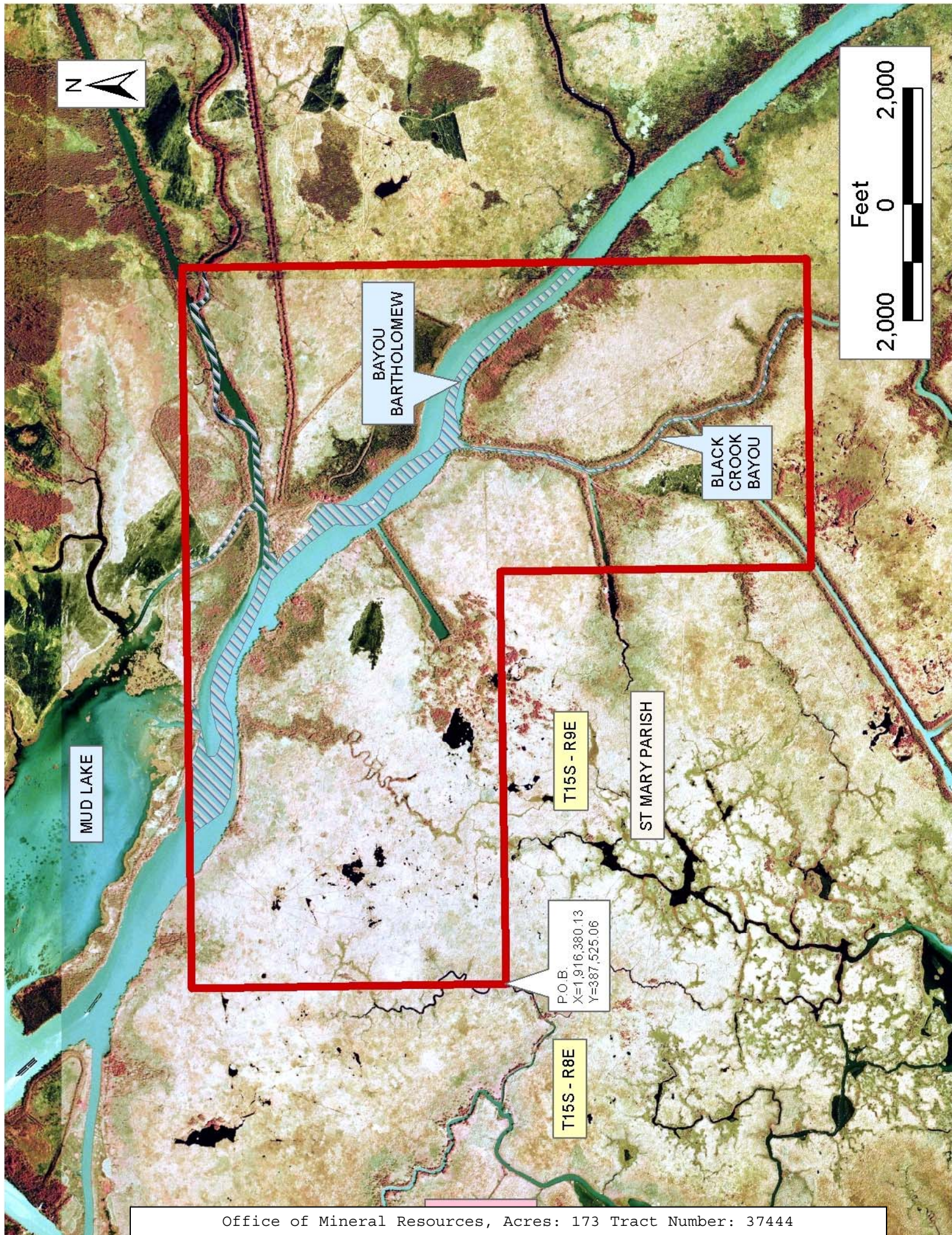
All of the lands now or formerly constituting the beds and bottoms of all water bodies of every nature and description the title of which vests in the State of Louisiana, together with all islands arising therein and other lands formed by accretion or by reliction, where allowed by law, excepting tax adjudicated lands, and not presently under mineral lease on June 8, 2005, situated in St. Mary Parish, Louisiana, and more particularly described as follows: Beginning at a point having Coordinates of X = 1,916,380.13 and Y = 387,525.06; thence North 5,395.84 feet to a point having Coordinates of X = 1,916,380.13 and Y = 392,920.90; thence East 12,381.60 feet to a point having Coordinates of X = 1,928,761.73 and Y = 392,920.90; thence South 10,744.58 feet to a point having Coordinates of X = 1,928,761.73 and Y = 382,176.32; thence West 5,288.28 feet to a point having Coordinates of X = 1,923,473.46 and Y = 382,176.32; thence North 5,348.74 feet to a point having Coordinates of X = 1,923,473.46 and Y = 387,525.06; thence West 7,093.33 feet to a the point of beginning, containing approximately **173 acres**, all as more particularly outlined on a plat on file in the Office of Mineral Resources, Department of Natural Resources. All bearings, distances and coordinates are based on Louisiana Coordinate System of 1927, (North or South Zone), where applicable.

NOTE: The above description of the Tract nominated for lease has been provided and corrected, where required, exclusively by the nomination party. Any mineral lease selected from this Tract and awarded by the Louisiana State Mineral Board shall be without warranty of any kind, either express, implied, or statutory, including, but not limited to, the implied warranties of merchantability and fitness for a particular purpose. Should the mineral lease awarded by the Louisiana State Mineral Board be subsequently modified, cancelled or abrogated due to the existence of conflicting leases, operating agreements, private claims or other future obligations or conditions which may affect all or any portion of the leased Tract, it shall not relieve the Lessee of the obligation to pay any bonus due thereon to the Louisiana State Mineral Board, nor shall the Louisiana State Mineral Board be obligated to refund any consideration paid by the Lessor prior to such modification, cancellation, or abrogation, including, but not limited to, bonuses, rentals and royalties.

NOTE: The State of Louisiana does hereby reserve, and this lease shall be subject to, the imprescriptible right of surface use in the nature of a servitude in favor of the Department of Natural Resources, including its Offices and Commissions, for the sole purpose of implementing, constructing, servicing and maintaining approved coastal zone management and/or restoration projects. Utilization of any and all rights derived under this lease by the mineral lessee, its agents, successors or assigns, shall not interfere with nor hinder the reasonable surface use by the Department of Natural Resources, its Offices or Commissions, as herein above reserved.

Applicant: Coastal Oil & Gas Properties, Inc.

Bidder	Cash Payment	Price/ Acre	Rental	Oil	Gas	Other



TRACT 37445 - Cameron Parish, Louisiana

All of the lands now or formerly constituting the beds and bottoms of all water bodies of every nature and description the title of which vests in the State of Louisiana, together with all islands arising therein and other lands formed by accretion or by reliction, where allowed by law, excepting tax adjudicated lands, and not presently under mineral lease on June 8, 2005, situated in Cameron Parish, Louisiana, and more particularly described as follows: Beginning at a point having Coordinates of X = 1,508,732.00 and Y = 392,230.00; thence East 10,872.00 feet to a point having Coordinates of X = 1,519,604.00 and Y = 392,230.00; thence South 15,668.00 feet to a point having Coordinates of X = 1,519,604.00 and Y = 376,562.00; thence West 10,872.00 feet to a point having Coordinates of X = 1,508,732.00 and Y = 376,562.00; thence North 15,668.00 feet to the point of beginning, containing approximately **88 acres**, all as more particularly outlined on a plat on file in the Office of Mineral Resources, Department of Natural Resources. All bearings, distances and coordinates are based on Louisiana Coordinate System of 1927, (North or South Zone), where applicable.

NOTE: The above description of the Tract nominated for lease has been provided and corrected, where required, exclusively by the nomination party. Any mineral lease selected from this Tract and awarded by the Louisiana State Mineral Board shall be without warranty of any kind, either express, implied, or statutory, including, but not limited to, the implied warranties of merchantability and fitness for a particular purpose. Should the mineral lease awarded by the Louisiana State Mineral Board be subsequently modified, cancelled or abrogated due to the existence of conflicting leases, operating agreements, private claims or other future obligations or conditions which may affect all or any portion of the leased Tract, it shall not relieve the Lessee of the obligation to pay any bonus due thereon to the Louisiana State Mineral Board, nor shall the Louisiana State Mineral Board be obligated to refund any consideration paid by the Lessor prior to such modification, cancellation, or abrogation, including, but not limited to, bonuses, rentals and royalties.

NOTE: The State of Louisiana does hereby reserve, and this lease shall be subject to, the imprescriptible right of surface use in the nature of a servitude in favor of the Department of Natural Resources, including its Offices and Commissions, for the sole purpose of implementing, constructing, servicing and maintaining approved coastal zone management and/or restoration projects. Utilization of any and all rights derived under this lease by the mineral lessee, its agents, successors or assigns, shall not interfere with nor hinder the reasonable surface use by the Department of Natural Resources, its Offices or Commissions, as herein above reserved.

Applicant: Oil And Gas Interests, Inc.

Bidder	Cash Payment	Price/ Acre	Rental	Oil	Gas	Other

TRACT 37446 - Cameron Parish, Louisiana

All of the lands now or formerly constituting the beds and bottoms of all water bodies of every nature and description the title of which vests in the State of Louisiana, together with all islands arising therein and other lands formed by accretion or by reliction, where allowed by law, excepting tax adjudicated lands, and not presently under mineral lease on June 8, 2005, situated in Cameron Parish, Louisiana, and more particularly described as follows: Beginning at a point having Coordinates of X = 1,476,116.00 and Y = 392,600.00; thence South 7,105.26 feet to a point on the North line of Block 1, East Cameron Area, Revised, said point also being on the Coastline as per the Supreme Court Decree dated June 16, 1975, and the North line of State Lease No. 1170, as amended, having Coordinates of X = 1,476,116.00 and Y = 385,494.74; thence along said Coastline the following courses: North 68 degrees 45 minutes 34 seconds West 5,231.39 feet to a point having Coordinates of X = 1,471,240.00 and Y = 387,390.00; North 68 degrees 05 minutes 15 seconds West 3831.83 feet to the most Northerly Northwest corner of said State Lease No. 1170, as amended, having Coordinates of X = 1,476,685.00 and Y = 388,820.00; North 71 degrees 23 minutes 57 seconds West 2,577.70 feet to the Northwest corner of said Block 1, said corner also being the Northeast corner of Block 32, West Cameron Area, Revised, having Coordinates of X = 1,465,241.95 and Y = 389,642.21; and North 71 degrees 23 minutes 57 seconds West 5,071.89 feet to a point having Coordinates of X = 1,460,435.00 and Y = 391,260.00; thence North 1,340.00 feet to a point having Coordinates of X = 1,460,435.00 and Y = 392,600.00; thence East 15,681.00 feet to the point of beginning, containing approximately **513 acres**, all as more particularly outlined on a plat on file in the Office of Mineral Resources, Department of Natural Resources. All bearings, distances and coordinates are based on Louisiana Coordinate System of 1927, (North or South Zone), where applicable.

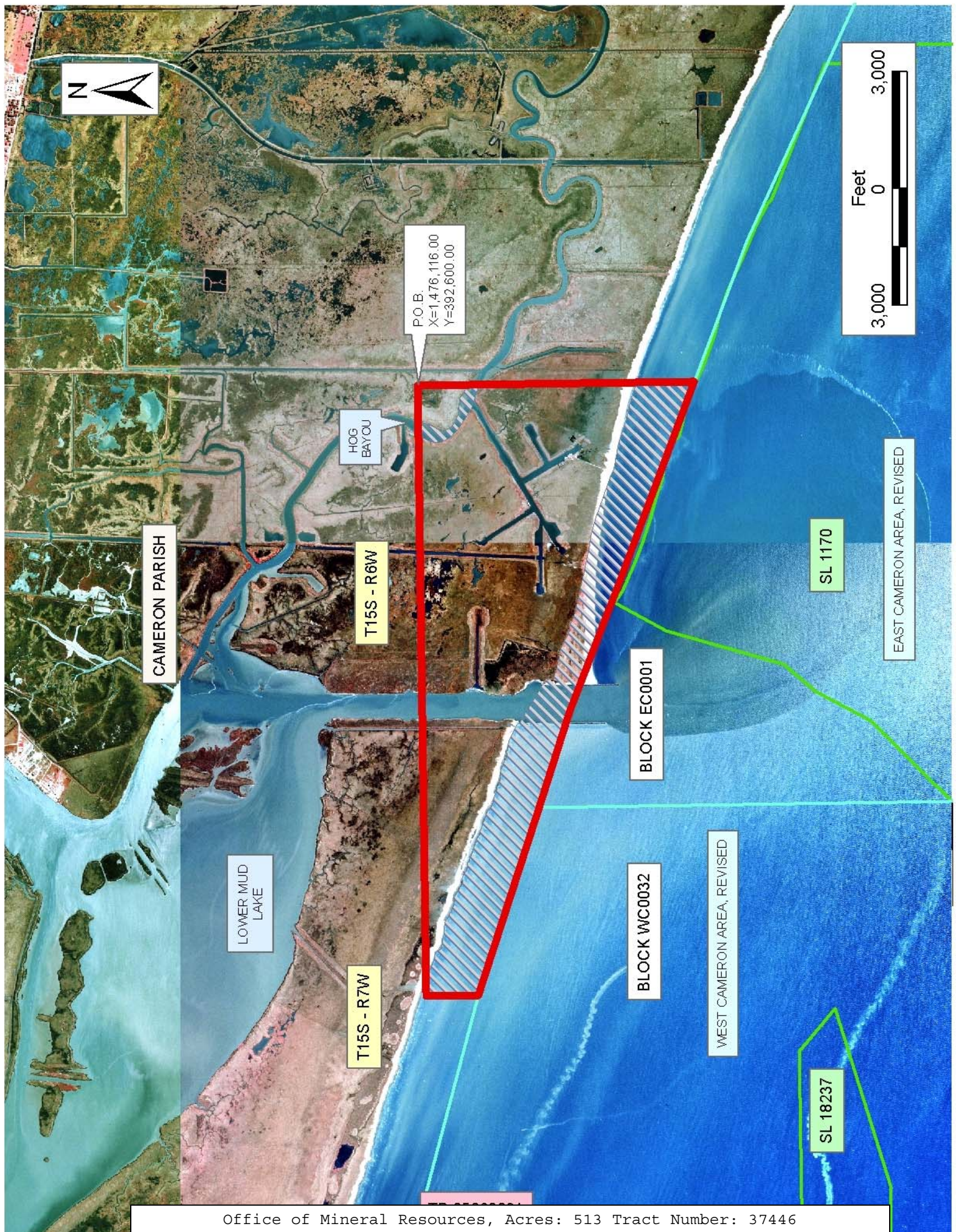
NOTE: The above description of the Tract nominated for lease has been provided and corrected, where required, exclusively by the nomination party. Any mineral lease selected from this Tract and awarded by the Louisiana State Mineral Board shall be without warranty of any kind, either express, implied, or statutory, including, but not limited to, the implied warranties of merchantability and fitness for a particular purpose. Should the mineral lease awarded by the Louisiana State Mineral Board be subsequently modified, cancelled or abrogated due to the existence of conflicting leases, operating agreements, private claims or other future obligations or conditions which may affect all or any portion of the leased Tract, it shall not relieve the Lessee of the obligation to pay any bonus due thereon to the Louisiana State Mineral Board, nor shall the Louisiana State Mineral Board be obligated to refund any consideration paid by the Lessor prior to such modification, cancellation, or abrogation, including, but not limited to, bonuses, rentals and royalties.

NOTE: The State of Louisiana does hereby reserve, and this lease shall be subject to, the imprescriptible right of surface use in the nature of a

servitude in favor of the Department of Natural Resources, including its Offices and Commissions, for the sole purpose of implementing, constructing, servicing and maintaining approved coastal zone management and/or restoration projects. Utilization of any and all rights derived under this lease by the mineral lessee, its agents, successors or assigns, shall not interfere with nor hinder the reasonable surface use by the Department of Natural Resources, its Offices or Commissions, as herein above reserved.

Applicant: Juanita C. Chatelain

Bidder	Cash Payment	Price/ Acre	Rental	Oil	Gas	Other



TRACT 37447 - Cameron Parish, Louisiana

All of the lands now or formerly constituting the beds and bottoms of all water bodies of every nature and description the title of which vests in the State of Louisiana, together with all islands arising therein and other lands formed by accretion or by reliction, where allowed by law, excepting tax adjudicated lands, and not presently under mineral lease on June 8, 2005, situated in Cameron Parish, Louisiana, and more particularly described as follows: Beginning at a point having Coordinates of X = 1,486,988.00 and Y = 392,230.00; thence South 11,567.49 feet to a point having Coordinates of X = 1,486,988.00 and Y = 380,662.51; thence Northwesterly on a straight line to a point having Coordinates of X = 1,479,730 and Y = 384,090; thence Northwesterly on a straight line to a point having Coordinates of X = 1,476,116.00 and Y = 385,494.73; thence North 6,735.27 feet to a point having Coordinates of X = 1,476,116.00 and Y = 392,230.00; thence East 10,872.00 feet to the point of beginning, **LESS AND EXCEPT** that portion of the above described tract which may lie within State Lease No. 1170, containing approximately **465 acres**, all as more particularly outlined on a plat on file in the Office of Mineral Resources, Department of Natural Resources. All bearings, distances and coordinates are based on Louisiana Coordinate System of 1927, (North or South Zone), where applicable.

NOTE: The above description of the Tract nominated for lease has been provided and corrected, where required, exclusively by the nomination party. Any mineral lease selected from this Tract and awarded by the Louisiana State Mineral Board shall be without warranty of any kind, either express, implied, or statutory, including, but not limited to, the implied warranties of merchantability and fitness for a particular purpose. Should the mineral lease awarded by the Louisiana State Mineral Board be subsequently modified, cancelled or abrogated due to the existence of conflicting leases, operating agreements, private claims or other future obligations or conditions which may affect all or any portion of the leased Tract, it shall not relieve the Lessee of the obligation to pay any bonus due thereon to the Louisiana State Mineral Board, nor shall the Louisiana State Mineral Board be obligated to refund any consideration paid by the Lessor prior to such modification, cancellation, or abrogation, including, but not limited to, bonuses, rentals and royalties.

NOTE: The State of Louisiana does hereby reserve, and this lease shall be subject to, the imprescriptible right of surface use in the nature of a servitude in favor of the Department of Natural Resources, including its Offices and Commissions, for the sole purpose of implementing, constructing, servicing and maintaining approved coastal zone management and/or restoration projects. Utilization of any and all rights derived under this lease by the mineral lessee, its agents, successors or assigns, shall not interfere with nor hinder the reasonable surface use by the Department of Natural Resources, its Offices or Commissions, as herein above reserved.

Applicant: Oil And Gas Interests, Inc.

Bidder	Cash Payment	Price/ Acre	Rental	Oil	Gas	Other

