

**TRACT 37428 - Caddo Parish, Louisiana**

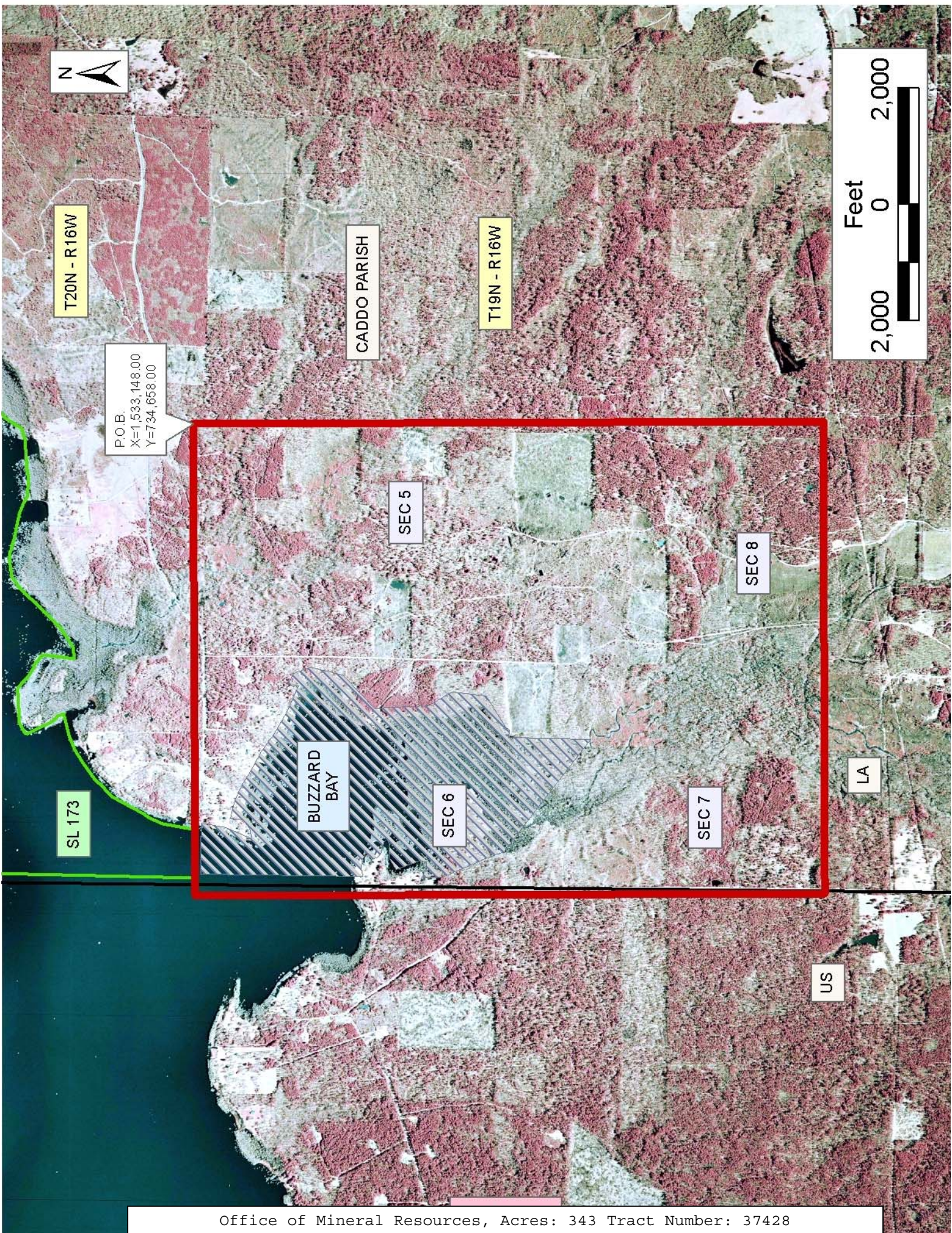
All of the lands now or formerly constituting the beds and bottoms of all water bodies of every nature and description the title of which vests in the State of Louisiana, together with all islands arising therein and other lands formed by accretion or by reliction, where allowed by law, excepting tax adjudicated lands, and not presently under mineral lease on June 8, 2005, situated in Caddo Parish, Louisiana, and more particularly described as follows: Beginning at a point having Coordinates of X = 1,533,148.00 and Y = 734,658.00; thence South 10,846.00 feet to a point having Coordinates of X = 1,533,148.00 and Y = 723,812.00; thence West 8,124.00 feet to a point having Coordinates of X = 1,525,024.00 and Y = 723,812.00; thence North 10,846.00 feet to a point having Coordinates of X = 1,525,024.00 and Y = 734,658.00; thence East 8,124.00 feet to the point of beginning, **LESS AND EXCEPT** any portion of State Lease No. 173 that may lie within the above described tract, containing approximately **343 acres, LESS AND EXCEPT** that portion thereof, if any, located West of the boundary line between the States of Texas and Louisiana as determined by the report of the Special Master and adjudicated by the Supreme Court of the United States in litigation styled **Texas v. Louisiana, et al No. 36 Original**, or as otherwise approved by said court, all as more particularly outlined on a plat on file in the Office of Mineral Resources, Department of Natural Resources. All bearings, distances and coordinates are based on Louisiana Coordinate System of 1927, (North or South Zone), where applicable.

NOTE: The above description of the Tract nominated for lease has been provided and corrected, where required, exclusively by the nomination party. Any mineral lease selected from this Tract and awarded by the Louisiana State Mineral Board shall be without warranty of any kind, either express, implied, or statutory, including, but not limited to, the implied warranties of merchantability and fitness for a particular purpose. Should the mineral lease awarded by the Louisiana State Mineral Board be subsequently modified, cancelled or abrogated due to the existence of conflicting leases, operating agreements, private claims or other future obligations or conditions which may affect all or any portion of the leased Tract, it shall not relieve the Lessee of the obligation to pay any bonus due thereon to the Louisiana State Mineral Board, nor shall the Louisiana State Mineral Board be obligated to refund any consideration paid by the Lessor prior to such modification, cancellation, or abrogation, including, but not limited to, bonuses, rentals and royalties.

Bidder	Cash Payment	Price/Acre	Rental	Oil	Gas	Other

Applicant: Colorado, Shine & Company



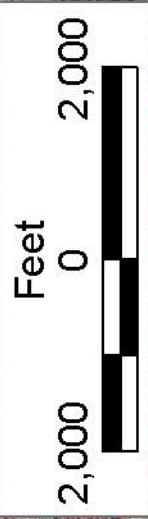


P.O.B.  
X=1,533,148.00  
Y=734,658.00

T20N - R16W

CADDO PARISH

T19N - R16W



SL 173

SEC 5

SEC 8

BUZZARD BAY

SEC 6

SEC 7

LA

US



**TRACT 37429 - Caddo and Red River Parishes, Louisiana**

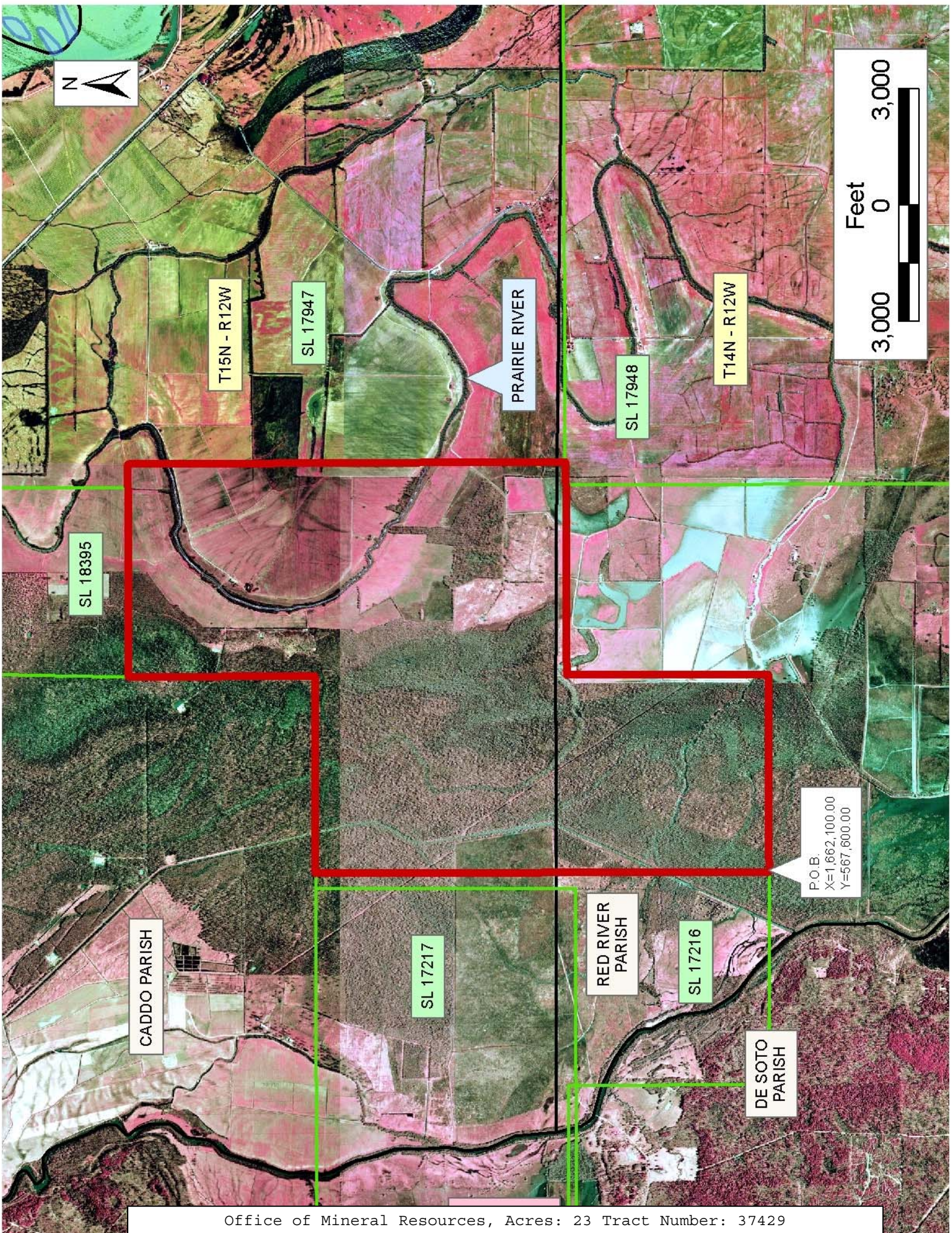
All of the lands now or formerly constituting the beds and bottoms of all water bodies of every nature and description the title of which vests in the State of Louisiana, together with all islands arising therein and other lands formed by accretion or by reliction, where allowed by law, excepting tax adjudicated lands, and not presently under mineral lease on June 8, 2005, situated in Caddo and Red River Parishes, Louisiana, and more particularly described as follows: Beginning at the Southeast corner of State Lease No. 17216 having Coordinates of X = 1,662,100.00 and Y = 567,600.00; thence North 11,700.00 feet on the East line of said State Lease No. 17216 to its Northeast corner having Coordinates of X = 1,662,100.00 and Y = 579,300.00; thence East 5,100.00 feet to a point having Coordinates of X = 1,667,200.00 and Y = 579,300.00; thence North 4,800.00 feet to the Southwest corner of State Lease No. 18395 having Coordinates of X = 1,667,200.00 and Y = 584,100.00; thence East 4,900.00 feet on the South line of said State Lease No. 18395 to its Southeast corner and the most Northerly Southwest corner of State Lease No. 17947 having Coordinates of X = 1,672,100.00 and Y = 584,100.00; thence along the boundary of said State Lease No. 17947 the following courses: East 600.00 feet and South 11,300.00 feet to its Southwest corner and a point on the North line of State Lease No. 17948 having Coordinates of X = 1,672,700.00 and Y = 572,800.00; thence West 600.00 feet on the North line of said State Lease No. 17948 to its Northwest corner having Coordinates of X = 1,672,100.00 and Y = 572,800.00; thence West 4,900.00 feet to a point having Coordinates of X = 1,667,200.00 and Y = 572,800.00; thence South 5,200.00 feet to a point having Coordinates of X = 1,667,200.00 and Y = 567,600.00; thence West 5,100.00 feet to the point of beginning, containing approximately **23 acres**, all as more particularly outlined on a plat on file in the Office of Mineral Resources, Department of Natural Resources. All bearings, distances and coordinates are based on Louisiana Coordinate System of 1927, (North or South Zone), where applicable.

NOTE: The above description of the Tract nominated for lease has been provided and corrected, where required, exclusively by the nomination party. Any mineral lease selected from this Tract and awarded by the Louisiana State Mineral Board shall be without warranty of any kind, either express, implied, or statutory, including, but not limited to, the implied warranties of merchantability and fitness for a particular purpose. Should the mineral lease awarded by the Louisiana State Mineral Board be subsequently modified, cancelled or abrogated due to the existence of conflicting leases, operating agreements, private claims or other future obligations or conditions which may affect all or any portion of the leased Tract, it shall not relieve the Lessee of the obligation to pay any bonus due thereon to the Louisiana State Mineral Board, nor shall the Louisiana State Mineral Board be obligated to refund any consideration paid by the Lessor prior to such modification, cancellation, or abrogation, including, but not limited to, bonuses, rentals and royalties.

Applicant: Red Oak Oil & Gas

Bidder	Cash Payment	Price/Acre	Rental	Oil	Gas	Other







**TRACT 37430 - Red River Parish, Louisiana**

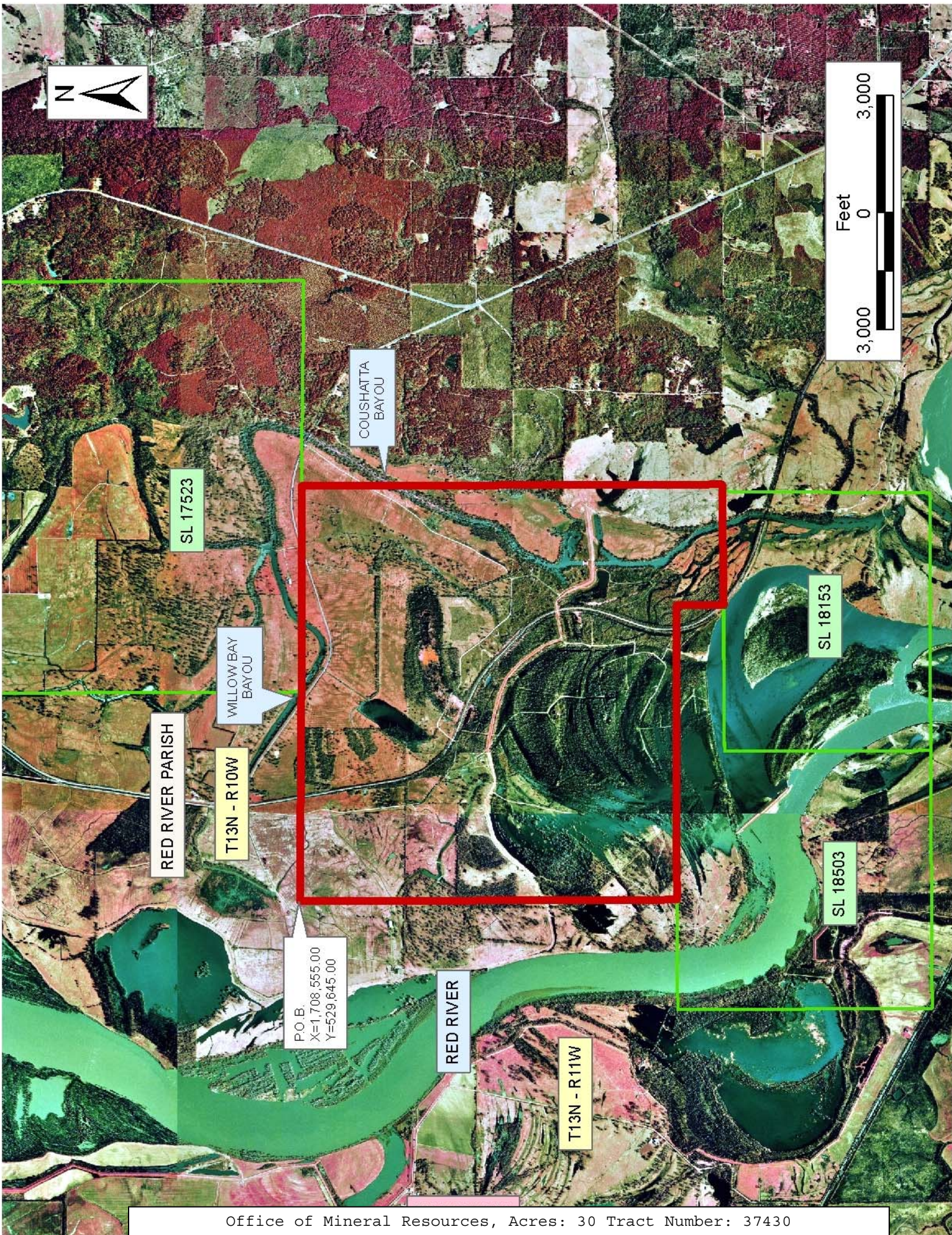
All of the lands now or formerly constituting the beds and bottoms of all water bodies of every nature and description the title of which vests in the State of Louisiana, together with all islands arising therein and other lands formed by accretion or by reliction, where allowed by law, excepting tax adjudicated lands, and not presently under mineral lease on June 8, 2005, situated in Red River Parish, Louisiana, and more particularly described as follows: Beginning at a point having Coordinates of X = 1,708,555.00 and Y = 529,645.00; thence South 89 degrees 20 minutes 12 seconds East 5,355.36 feet to the Southwest corner of State Lease No. 17523, having Coordinates of X = 1,713,910.00 and Y = 529,583.00; thence South 89 degrees 41 minutes 46 seconds East 5,280.07 feet along the South boundary of said State Lease No. 17523 to a Southern corner having Coordinates of X = 1,719,190.00 and Y = 529,555.00; thence South 10,783.80 feet to a point having Coordinates of X = 1,719,190.00 and Y = 518,771.20; thence West 187.84 feet to the Northeast corner of State Lease No. 18153 having Coordinates of X = 1,719,002.16 and Y = 518,771.20; thence South 89 degrees 41 minutes 00 seconds West 2,905.85 feet along the North boundary of said State Lease No. 18153 to an Eastern corner of State Lease No. 18503, having Coordinates of X = 1,716,096.35 and Y = 518,755.14, thence North 1,220.00 feet and West 7,541.35 feet along the East and North boundaries of said State Lease No. 18503, to a point having Coordinates of X = 1,708,555.00 and Y = 519,975.14; thence North 9,669.86 feet to the point of beginning, containing approximately **30 acres**, all as more particularly outlined on a plat on file in the Office of Mineral Resources, Department of Natural Resources. All bearings, distances and coordinates are based on Louisiana Coordinate System of 1927, (North or South Zone), where applicable.

NOTE: The above description of the Tract nominated for lease has been provided and corrected, where required, exclusively by the nomination party. Any mineral lease selected from this Tract and awarded by the Louisiana State Mineral Board shall be without warranty of any kind, either express, implied, or statutory, including, but not limited to, the implied warranties of merchantability and fitness for a particular purpose. Should the mineral lease awarded by the Louisiana State Mineral Board be subsequently modified, cancelled or abrogated due to the existence of conflicting leases, operating agreements, private claims or other future obligations or conditions which may affect all or any portion of the leased Tract, it shall not relieve the Lessee of the obligation to pay any bonus due thereon to the Louisiana State Mineral Board, nor shall the Louisiana State Mineral Board be obligated to refund any consideration paid by the Lessor prior to such modification, cancellation, or abrogation, including, but not limited to, bonuses, rentals and royalties.

Applicant: Theophilus Oil, Gas & Land Services, LLC

Bidder	Cash Payment	Price/Acre	Rental	Oil	Gas	Other







**TRACT 37431 - Lasalle Parish, Louisiana**

All of the lands now or formerly constituting the beds and bottoms of all water bodies of every nature and description the title of which vests in the State of Louisiana, together with all islands arising therein and other lands formed by accretion or by reliction, where allowed by law, excepting tax adjudicated lands, and not presently under mineral lease on June 8, 2005, situated in Lasalle Parish, Louisiana, and more particularly described as follows: Beginning at a point having Coordinates of X = 2,126,891.78 and Y = 307,630.00; thence North 00 degrees 35 minutes 29 seconds West 8,118.43 feet to a point having Coordinates of X = 2,126,808.00 and Y = 315,748.00; thence Easterly approximately 2,650 feet to the Southeast corner of State Lease No. 13461, as amended; thence Easterly 1,325 feet along the South boundary of said State Lease No. 13461 to a point; thence Southerly approximately 1,318 feet to a point having Coordinates of X = 2,130,799.69 and Y = 314,420.13; thence Easterly approximately 1,325 feet to the Northeast corner of the Southern portion of State Lease No. 3691, as amended; thence Southerly approximately 2,640 feet to a point having Coordinates of X = 2,132,157.00 and Y = 311,776.00; thence East 4,048.13 feet to a point having Coordinates of X = 2,136,205.13 and Y = 311,776.00; thence North 1,319.63 feet to a point having Coordinates of X = 2,136,205.13 and Y = 313,095.63; thence West approximately 1,367 feet to a point on the East line of said Southern portion of State Lease No. 3691, having a Coordinate of Y = 313,095.63; thence Northerly approximately 1,100 feet along said East line of said State Lease No. 3691 to the Northeast corner of said State Lease No. 3691, thence Northerly approximately 1,536 feet to a point having Coordinates of X = 2,134,808.49 and Y = 315,732.00; thence East 2,687.51 feet to a point having Coordinates of X = 2,137,496.00 and Y = 315,732.00; thence South 10,509.00 feet to a point having Coordinates of X = 2,137,496.00 and Y = 305,223.00; thence West 5,288.00 feet to a point having Coordinates of X = 2,132,208.00 and Y = 305,223.00; thence North 3,351.22 feet to a point having Coordinates of X = 2,132,208.00 and Y = 308,574.22; thence South 71 degrees 07 minutes 47 seconds West 2,919.44 feet to a point having Coordinates of X = 2,129,445.47 and Y = 307,630.00; thence West 2,553.69 feet to the point of beginning, **LESS AND EXCEPT** any portion of State Lease No. 1461, as amended; State Lease No. 13461, as amended; and State Lease No. 3691, as amended that may lie within the above described tract, **ALSO LESS AND EXCEPT** any portion of the Dewey W. Willis Wildlife Management Area that may lie within the above described tract, containing approximately **1069 acres**, all as more particularly outlined on a plat on file in the Office of Mineral Resources, Department of Natural Resources. All bearings, distances and coordinates are based on Louisiana Coordinate System of 1927, (North or South Zone), where applicable.

NOTE: The above description of the Tract nominated for lease has been provided and corrected, where required, exclusively by the nomination party. Any mineral lease selected from this Tract and awarded by the Louisiana State Mineral Board shall be without warranty of any kind, either express, implied, or statutory, including, but not limited to, the

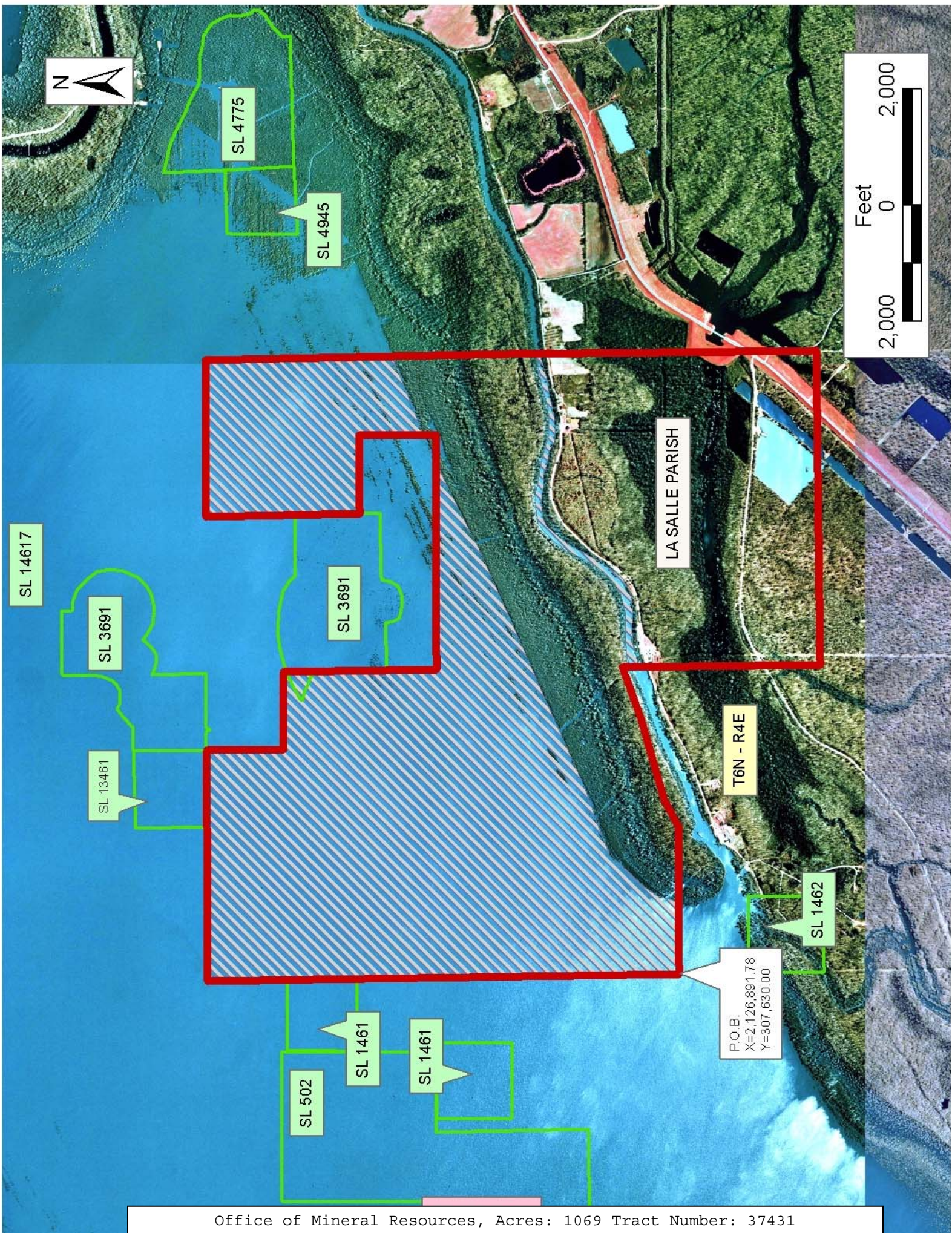


implied warranties of merchantability and fitness for a particular purpose. Should the mineral lease awarded by the Louisiana State Mineral Board be subsequently modified, cancelled or abrogated due to the existence of conflicting leases, operating agreements, private claims or other future obligations or conditions which may affect all or any portion of the leased Tract, it shall not relieve the Lessee of the obligation to pay any bonus due thereon to the Louisiana State Mineral Board, nor shall the Louisiana State Mineral Board be obligated to refund any consideration paid by the Lessor prior to such modification, cancellation, or abrogation, including, but not limited to, bonuses, rentals and royalties.

Applicant: Reagan Energy Services, LLC

Bidder	Cash Payment	Price/Acre	Rental	Oil	Gas	Other







**TRACT 37432 - St. Landry Parish, Louisiana**

All of the lands now or formerly constituting the beds and bottoms of all water bodies of every nature and description the title of which vests in the State of Louisiana, together with all islands arising therein and other lands formed by accretion or by reliction, where allowed by law, excepting tax adjudicated lands, and not presently under mineral lease on June 8, 2005, situated in St. Landry Parish, Louisiana, and more particularly described as follows: Beginning at a point having Coordinates of X = 1,782,000.00 and Y = 694,800.00; thence East 4,200.00 feet to a point having Coordinates of X = 1,786,200.00 and Y = 694,800.00; thence South 5,500.00 feet to a point having Coordinates of X = 1,786,200.00 and Y = 689,300.00; thence West 4,200.00 feet to point having Coordinates of X = 1,782,000.00 and Y = 689,300.00; thence North 5,500.00 feet to the point of beginning, containing approximately **11 acres**, all as more particularly outlined on a plat on file in the Office of Mineral Resources, Department of Natural Resources. All bearings, distances and coordinates are based on Louisiana Coordinate System of 1927, (North or South Zone), where applicable.

NOTE: The above description of the Tract nominated for lease has been provided and corrected, where required, exclusively by the nomination party. Any mineral lease selected from this Tract and awarded by the Louisiana State Mineral Board shall be without warranty of any kind, either express, implied, or statutory, including, but not limited to, the implied warranties of merchantability and fitness for a particular purpose. Should the mineral lease awarded by the Louisiana State Mineral Board be subsequently modified, cancelled or abrogated due to the existence of conflicting leases, operating agreements, private claims or other future obligations or conditions which may affect all or any portion of the leased Tract, it shall not relieve the Lessee of the obligation to pay any bonus due thereon to the Louisiana State Mineral Board, nor shall the Louisiana State Mineral Board be obligated to refund any consideration paid by the Lessor prior to such modification, cancellation, or abrogation, including, but not limited to, bonuses, rentals and royalties.

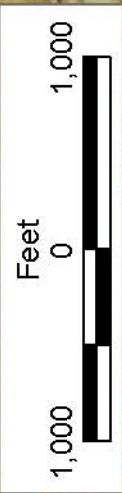
Applicant: Sinderalla, Williams & Associates, Ltd.

Bidder	Cash Payment	Price/Acre	Rental	Oil	Gas	Other





ST LANDRY PARISH



P.O.B.  
X=1,782,000.00  
Y=694,800.00

T5S - R4E

T6S - R4E



**TRACT 37433 - St. Mary Parish, Louisiana**

All of the lands now or formerly constituting the beds and bottoms of all water bodies of every nature and description the title of which vests in the State of Louisiana, together with all islands arising therein and other lands formed by accretion or by reliction, where allowed by law, excepting tax adjudicated lands, and not presently under mineral lease on June 8, 2005, situated in St. Mary Parish, Louisiana, and more particularly described as follows: Beginning at a point having Coordinates of X = 1,942,852.00 and Y = 443,572.00; thence North 14,028.86 feet to a point on the South line of State Lease No. 14519 having Coordinates of X = 1,942,852.00 and Y = 457,600.86; thence East 4,533.00 feet on the South line of said State Lease No. 14519 to its Southeast corner also being the Southwest corner of State Lease No. 14520 having Coordinates of X = 1,947,385.00 and Y = 457,600.86; thence East 2,815.00 feet on the South line of said State Lease No. 14520 to the Northwest corner of State Lease No. 14914, as amended having Coordinates of X = 1,950,200.00 and Y = 457,600.86; thence South 6,100.86 feet on the West line of said State Lease No. 14914 to its Southwest corner also being the Northwest corner of State Lease No. 14953, as amended having Coordinates of X = 1,950,200.00 and Y = 451,500.00; thence South 1,500.00 feet on the West line of said State Lease No. 14953 to its Southwest corner also being the Northwest corner of State Lease No. 16859, as amended having Coordinates of X = 1,950,200.00 and Y = 450,000.00; thence along the boundary of said State Lease No. 16859 the following courses: South 400.00 feet and East 6,000.00 feet to its Southeast corner having Coordinates of X = 1,956,200.00 and Y = 449,600.00; thence South 6,028.00 feet to a point having Coordinates of X = 1,956,200.00 and Y = 443,572.00; thence West 13,348.00 feet to the point of beginning, **LESS AND EXCEPT** any portion of the Attakapas Island Wildlife Management Area that may lie within the above described tract, containing approximately **1,341 acres**, all as more particularly outlined on a plat on file in the Office of Mineral Resources, Department of Natural Resources. All bearings, distances and coordinates are based on Louisiana Coordinate System of 1927, (North or South Zone), where applicable.

NOTE: The above description of the Tract nominated for lease has been provided and corrected, where required, exclusively by the nomination party. Any mineral lease selected from this Tract and awarded by the Louisiana State Mineral Board shall be without warranty of any kind, either express, implied, or statutory, including, but not limited to, the implied warranties of merchantability and fitness for a particular purpose. Should the mineral lease awarded by the Louisiana State Mineral Board be subsequently modified, cancelled or abrogated due to the existence of conflicting leases, operating agreements, private claims or other future obligations or conditions which may affect all or any portion of the leased Tract, it shall not relieve the Lessee of the obligation to pay any bonus due thereon to the Louisiana State Mineral Board, nor shall the Louisiana State Mineral Board be obligated to refund any consideration paid by the Lessor prior to such modification, cancellation, or abrogation, including, but not limited to, bonuses, rentals and royalties.

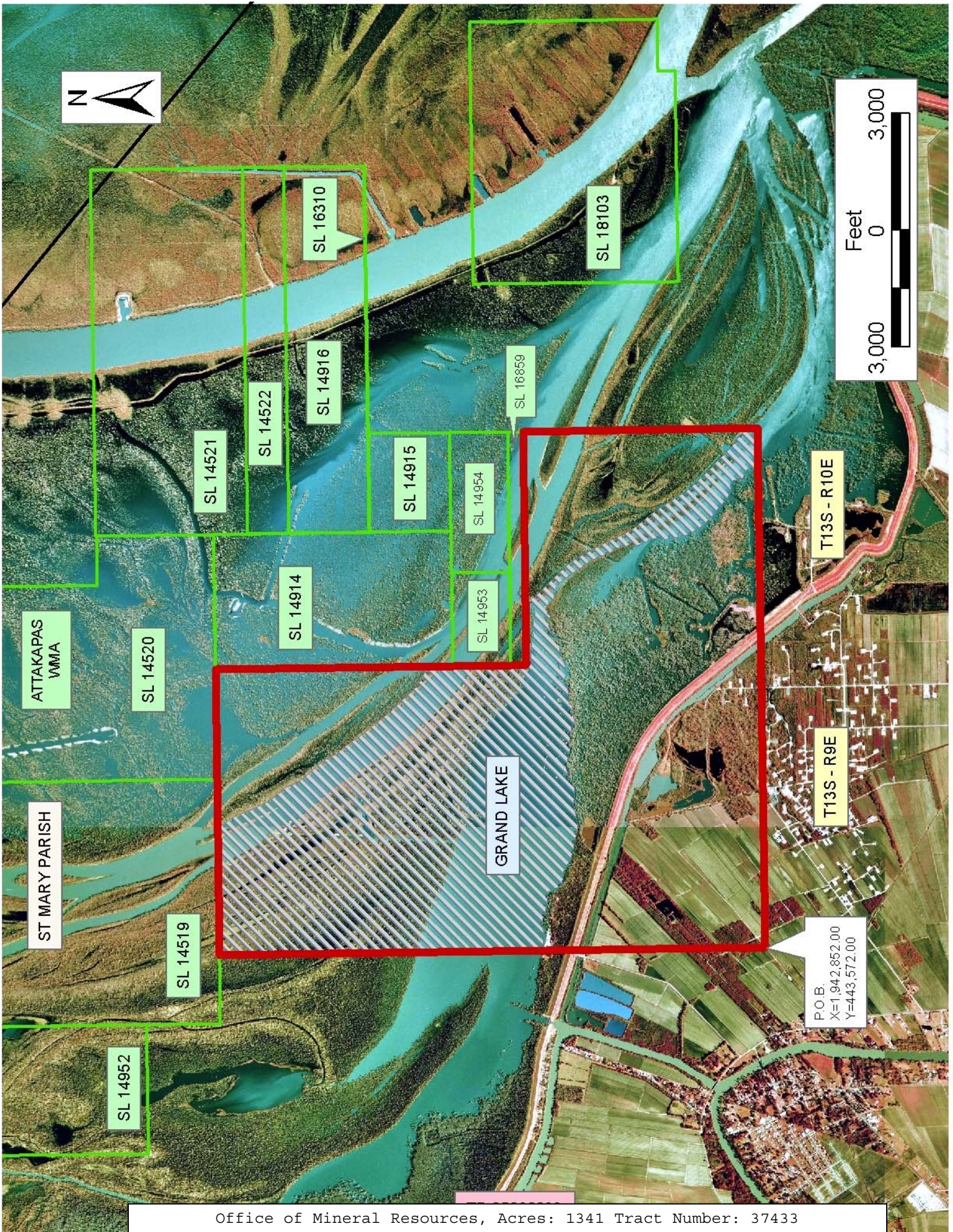


NOTE: The State of Louisiana does hereby reserve, and this lease shall be subject to, the imprescriptible right of surface use in the nature of a servitude in favor of the Department of Natural Resources, including its Offices and Commissions, for the sole purpose of implementing, constructing, servicing and maintaining approved coastal zone management and/or restoration projects. Utilization of any and all rights derived under this lease by the mineral lessee, its agents, successors or assigns, shall not interfere with nor hinder the reasonable surface use by the Department of Natural Resources, its Offices or Commissions, as herein above reserved.

Applicant: Rickey T. Matherne, Jr.

Bidder	Cash Payment	Price/Acre	Rental	Oil	Gas	Other







**TRACT 37434 - Iberia and Vermilion Parishes, Louisiana**

All of the lands now or formerly constituting the beds and bottoms of all water bodies of every nature and description the title of which vests in the State of Louisiana, together with all islands arising therein and other lands formed by accretion or by reliction, where allowed by law, excepting tax adjudicated lands, and not presently under mineral lease on June 8, 2005, situated in Iberia and Vermilion Parishes, Louisiana, and more particularly described as follows: Beginning at the Southeast corner of State Lease No. 18160 having Coordinates of X = 1,800,277.88 and Y = 421,484.53; thence South 4,224.20 feet to a point having Coordinates of X = 1,800,277.88 and Y = 417,260.33; thence West 1,149.94 feet to a point on the East Boundary of State Lease No. 15507, as amended, having Coordinates of X = 1,799,127.94 and Y = 417,260.33; thence along the boundary of said State Lease No. 15507 the following courses: North 30 degrees 33 minutes 11 seconds West 940.21 feet to a point having Coordinates of X = 1,798,650.00 and Y = 418,070.00, North 47 degrees 11 minutes 26 seconds West 258.99 feet to a point having Coordinates of X = 1,798,460.00 and Y = 418,246.00, North 51 degrees 47 minutes 39 seconds West 257.08 feet to a point having Coordinates of X = 1,798,257.99 and Y = 418,405.00, North 62 degrees 10 minutes 33 seconds West 203.53 feet to a point having Coordinates of X = 1,798,077.99 and Y = 418,500.00, North 69 degrees 34 minutes 02 seconds West 163.27 feet to a point having Coordinates of X = 1,797,924.99 and Y = 418,557.00, North 75 degrees 37 minutes 07 seconds West 201.31 feet to a point having Coordinates of X = 1,797,729.99 and Y = 418,607.00, North 85 degrees 35 minutes 12 seconds West 298.89 feet to a point having Coordinates of X = 1,797,431.99 and Y = 418,630.00, North 88 degrees 26 minutes 29 seconds West 294.11 feet to a point having Coordinates of X = 1,797,137.99 and Y = 418,638.00, South 86 degrees 00 minutes 33 seconds West 258.63 feet to a point having Coordinates of X = 1,796,879.98 and Y = 418,620.00, South 78 degrees 27 minutes 55 seconds West 250.05 feet to a point having Coordinates of X = 1,796,634.98 and Y = 418,570.00, South 75 degrees 23 minutes 15 seconds West 289.36 feet to a point having Coordinates of X = 1,796,354.98 and Y = 418,497.00, South 70 degrees 23 minutes 05 seconds West 199.58 feet to a point having Coordinates of X = 1,796,166.99 and Y = 418,430.00, South 65 degrees 33 minutes 22 seconds West 205.41 feet to a point having Coordinates of X = 1,795,979.99 and Y = 418,345.00, South 52 degrees 45 minutes 55 seconds West 157.00 feet to a point having Coordinates of X = 1,795,854.99 and Y = 418,250.00, South 48 degrees 00 minutes 46 seconds West 201.80 feet to a point having Coordinates of X = 1,795,704.99 and Y = 418,115.00, South 36 degrees 34 minutes 23 seconds West 193.00 feet to a point having Coordinates of X = 1,795,589.99 and Y = 417,960.01, South 30 degrees 01 minutes 46 seconds West 199.82 feet to a point having Coordinates of X = 1,795,490.00 and Y = 417,787.01, South 23 degrees 43 minutes 42 seconds West 198.81 feet to a point having Coordinates of X = 1,795,409.99 and Y = 417,605.01, South 15 degrees 54 minutes 22 seconds West 200.68 feet to a point having Coordinates of X = 1,795,355.00 and Y = 417,412.01, and South 14 degrees 02 minutes 10 seconds West 156.35 feet to a point having Coordinates of X = 1,795,317.08 and Y = 417,260.33; thence West 2,437.09



feet to a point having Coordinates of X = 1,792,879.98 and Y = 417,260.33; thence North 7,694.96 feet to a point having Coordinates of X = 1,792,879.98 and Y = 424,955.29; thence East 4,098.35 feet to a point on the West Boundary of said State Lease No. 18160 having Coordinates of X = 1,796,978.34 and Y = 424,955.29; thence South 3,470.76 feet along the West boundary of said State Lease No. 18160 to its Southwest corner having Coordinates of X = 1,796,978.34 and Y = 421,484.53; thence East 3,299.54 feet along the South Boundary of said State Lease No. 18160 to the point of beginning, containing approximately **720 acres**, all as more particularly outlined on a plat on file in the Office of Mineral Resources, Department of Natural Resources. All bearings, distances and coordinates are based on Louisiana Coordinate System of 1927, (North or South Zone), where applicable.

NOTE: The above description of the Tract nominated for lease has been provided and corrected, where required, exclusively by the nomination party. Any mineral lease selected from this Tract and awarded by the Louisiana State Mineral Board shall be without warranty of any kind, either express, implied, or statutory, including, but not limited to, the implied warranties of merchantability and fitness for a particular purpose. Should the mineral lease awarded by the Louisiana State Mineral Board be subsequently modified, cancelled or abrogated due to the existence of conflicting leases, operating agreements, private claims or other future obligations or conditions which may affect all or any portion of the leased Tract, it shall not relieve the Lessee of the obligation to pay any bonus due thereon to the Louisiana State Mineral Board, nor shall the Louisiana State Mineral Board be obligated to refund any consideration paid by the Lessor prior to such modification, cancellation, or abrogation, including, but not limited to, bonuses, rentals and royalties.

NOTE: The State of Louisiana does hereby reserve, and this lease shall be subject to, the imprescriptible right of surface use in the nature of a servitude in favor of the Department of Natural Resources, including its Offices and Commissions, for the sole purpose of implementing, constructing, servicing and maintaining approved coastal zone management and/or restoration projects. Utilization of any and all rights derived under this lease by the mineral lessee, its agents, successors or assigns, shall not interfere with nor hinder the reasonable surface use by the Department of Natural Resources, its Offices or Commissions, as herein above reserved.

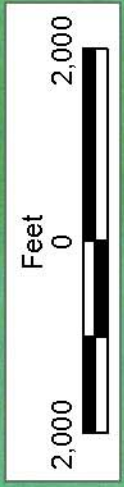
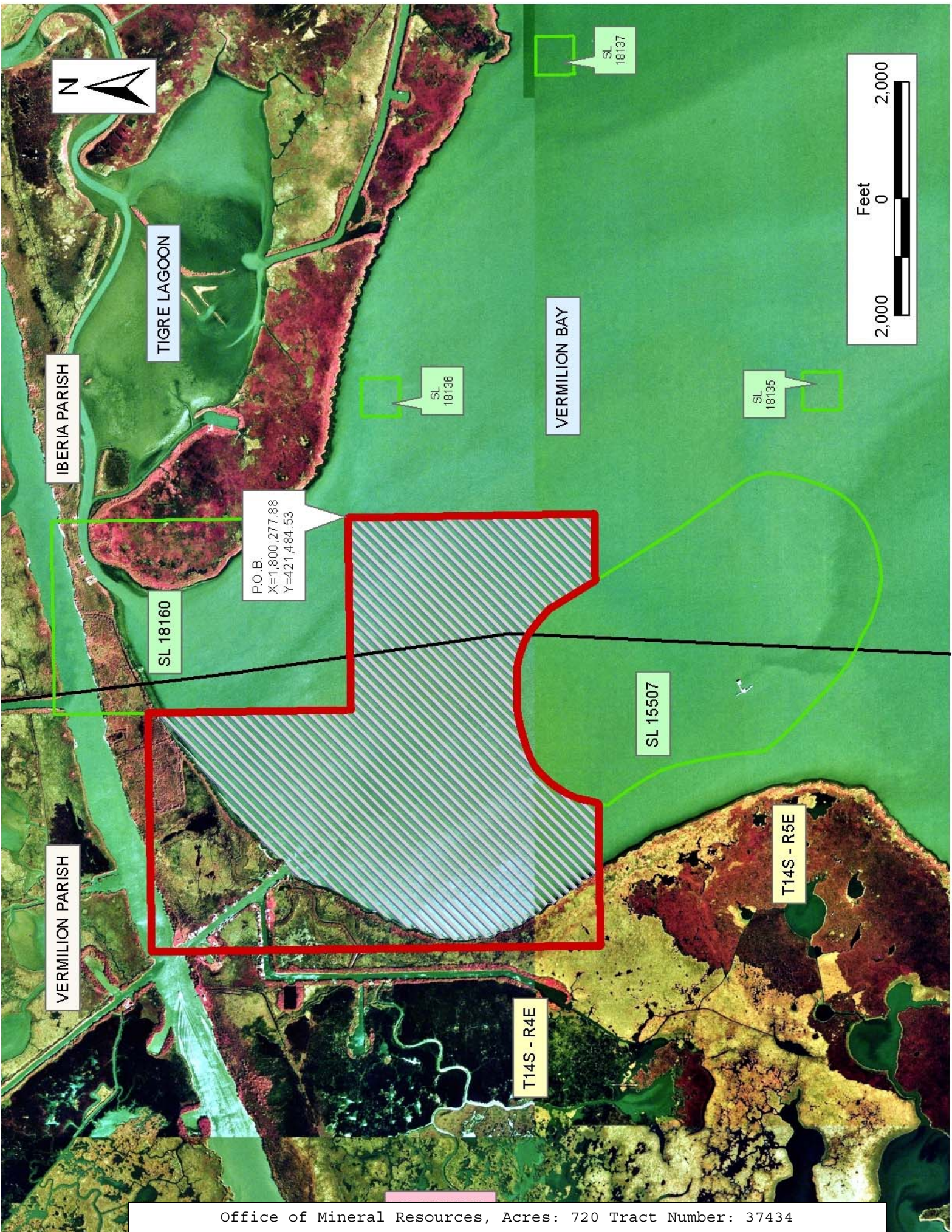
NOTE: The Department of Wildlife and Fisheries has designated certain areas in the coastal waters of the State of Louisiana as Oyster Seed Bed Areas. The exact location of those Seed Bed Areas must be obtained from the Department of Wildlife and Fisheries and any work done under a mineral lease from the State of Louisiana may necessarily be conducted in conformity with the rules and regulations promulgated by the said Department of Wildlife and Fisheries for Oyster Seed Bed Areas.



Applicant: Energy Partners, Inc.

Bidder	Cash Payment	Price/Acre	Rental	Oil	Gas	Other





IBERIA PARISH

TIGRE LAGOON

VERMILION BAY

VERMILION PARISH

SL 18160

SL 18136

SL 18137

SL 18135

P.O.B.  
X=1,800,277.88  
Y=421,484.53

SL 15507

T14S - R5E

T14S - R4E



**TRACT 37435 - Jefferson and St. Charles Parishes, Louisiana**

All of the lands now or formerly constituting the beds and bottoms of all water bodies of every nature and description the title of which vests in the State of Louisiana, together with all islands arising therein and other lands formed by accretion or by reliction, where allowed by law, excepting tax adjudicated lands, and not presently under mineral lease on June 8, 2005, situated in Jefferson and St. Charles Parishes, Louisiana, and more particularly described as follows: Beginning at a point having Coordinates of X = 2,371,845.00 and Y = 406,400.00; thence West 9,493.71 feet to the Northeast corner of State Lease No. 17708 having Coordinates of X = 2,362,351.29 and Y = 406,400.00; thence West 5,601.29 feet on the North line of said State Lease No. 17708 to its Northwest corner having Coordinates of X = 2,356,750.00 and Y = 406,400.00; thence North 2,800.00 feet to a point having Coordinates of X = 2,356,750.00 and Y = 409,200.00; thence East 15,095.00 feet to a point having Coordinates of X = 2,371,845.00 and Y = 409,200.00; thence South 2,800.00 feet to the point of beginning, containing approximately **970.29 acres**, all as more particularly outlined on a plat on file in the Office of Mineral Resources, Department of Natural Resources. All bearings, distances and coordinates are based on Louisiana Coordinate System of 1927, (North or South Zone), where applicable.

NOTE: The above description of the Tract nominated for lease has been provided and corrected, where required, exclusively by the nomination party. Any mineral lease selected from this Tract and awarded by the Louisiana State Mineral Board shall be without warranty of any kind, either express, implied, or statutory, including, but not limited to, the implied warranties of merchantability and fitness for a particular purpose. Should the mineral lease awarded by the Louisiana State Mineral Board be subsequently modified, cancelled or abrogated due to the existence of conflicting leases, operating agreements, private claims or other future obligations or conditions which may affect all or any portion of the leased Tract, it shall not relieve the Lessee of the obligation to pay any bonus due thereon to the Louisiana State Mineral Board, nor shall the Louisiana State Mineral Board be obligated to refund any consideration paid by the Lessor prior to such modification, cancellation, or abrogation, including, but not limited to, bonuses, rentals and royalties.

NOTE: The State of Louisiana does hereby reserve, and this lease shall be subject to, the imprescriptible right of surface use in the nature of a servitude in favor of the Department of Natural Resources, including its Offices and Commissions, for the sole purpose of implementing, constructing, servicing and maintaining approved coastal zone management and/or restoration projects. Utilization of any and all rights derived under this lease by the mineral lessee, its agents, successors or assigns, shall not interfere with nor hinder the reasonable surface use by the Department of Natural Resources, its Offices or Commissions, as herein above reserved.

Applicant: Greenwing Resources

Bidder	Cash Payment	Price/Acre	Rental	Oil	Gas	Other

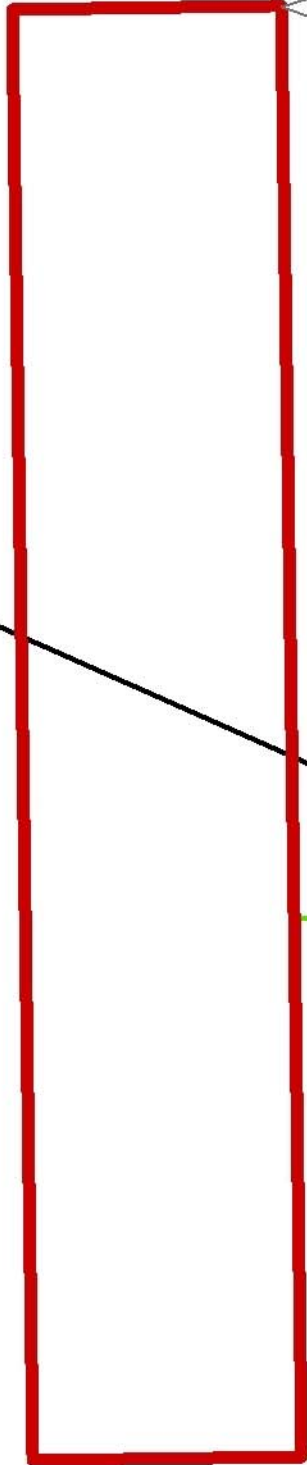




LAKE SALVADOR

JEFFERSON PARISH

ST CHARLES PARISH



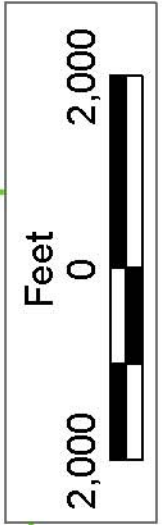
P.O.B.  
X=2,371,845.00  
Y=406,400.00

SL 17708

SL 17140

SL 17917

SL 18138



**TRACT 37436 - Jefferson and St. Charles Parishes, Louisiana**

All of the lands now or formerly constituting the beds and bottoms of all water bodies of every nature and description the title of which vests in the State of Louisiana, together with all islands arising therein and other lands formed by accretion or by reliction, where allowed by law, excepting tax adjudicated lands, and not presently under mineral lease on June 8, 2005, situated in Jefferson and St. Charles Parishes, Louisiana, and more particularly described as follows: Beginning at a point having Coordinates of X = 2,371,845.00 and Y = 406,400.00; thence South 2,779.33 feet to the Northeast corner of State Lease No. 18138 having Coordinates of X = 2,371,845.00 and Y = 403,620.67; thence West 7,657.08 feet on the North line of said State Lease No. 18138 to its Northwest corner and a point on the boundary of State Lease No. 17140 having Coordinates of X = 2,364,187.92 and Y = 403,620.67; thence North 44 degrees 00 minutes 00 seconds West 1,743.95 feet on the boundary of said State Lease No. 17140 to its most north Northeast corner and the Southeast corner of State Lease No. 17708 having Coordinates of X = 2,362,976.47 and Y = 404,875.16; thence along the boundary of said State Lease No. 17708 the following courses: North 42 degrees 42 minutes 15 seconds West 921.80 feet and North 847.44 feet to its Northeast corner having Coordinates of X = 2,362,351.29 and Y = 406,400.00; thence East 9,493.71 feet to the point of beginning, containing approximately **565.43 acres**, all as more particularly outlined on a plat on file in the Office of Mineral Resources, Department of Natural Resources. All bearings, distances and coordinates are based on Louisiana Coordinate System of 1927, (North or South Zone), where applicable.

NOTE: The above description of the Tract nominated for lease has been provided and corrected, where required, exclusively by the nomination party. Any mineral lease selected from this Tract and awarded by the Louisiana State Mineral Board shall be without warranty of any kind, either express, implied, or statutory, including, but not limited to, the implied warranties of merchantability and fitness for a particular purpose. Should the mineral lease awarded by the Louisiana State Mineral Board be subsequently modified, cancelled or abrogated due to the existence of conflicting leases, operating agreements, private claims or other future obligations or conditions which may affect all or any portion of the leased Tract, it shall not relieve the Lessee of the obligation to pay any bonus due thereon to the Louisiana State Mineral Board, nor shall the Louisiana State Mineral Board be obligated to refund any consideration paid by the Lessor prior to such modification, cancellation, or abrogation, including, but not limited to, bonuses, rentals and royalties.

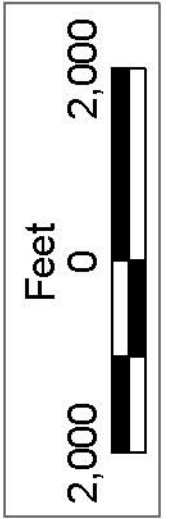
NOTE: The State of Louisiana does hereby reserve, and this lease shall be subject to, the imprescriptible right of surface use in the nature of a servitude in favor of the Department of Natural Resources, including its Offices and Commissions, for the sole purpose of implementing, constructing, servicing and maintaining approved coastal zone management and/or restoration projects. Utilization of any and all rights derived



under this lease by the mineral lessee, its agents, successors or assigns, shall not interfere with nor hinder the reasonable surface use by the Department of Natural Resources, its Offices or Commissions, as herein above reserved.

Applicant: Greenwing Resources

Bidder	Cash Payment	Price/Acre	Rental	Oil	Gas	Other



ST CHARLES PARISH

JEFFERSON PARISH

LAKE SALVADOR

P.O.B.  
X=2,371,845.00  
Y=406,400.00

SL 17708

SL 17140

SL 18138

SL 17917



**TRACT 37437 - St. Charles Parish, Louisiana**

All of the lands now or formerly constituting the beds and bottoms of all water bodies of every nature and description the title of which vests in the State of Louisiana, together with all islands arising therein and other lands formed by accretion or by reliction, where allowed by law, excepting tax adjudicated lands, and not presently under mineral lease on June 8, 2005, situated in St. Charles Parish, Louisiana, and more particularly described as follows: Beginning at a point having Coordinates of X = 2,342,005.00 and Y = 404,650.00; thence South 9,496.08 feet to a point having Coordinates of X = 2,342,005.00 and Y = 395,153.92; thence South 41 degrees 36 minutes 04 seconds West 4,110.69 feet to a point having Coordinates of X = 2,339,275.75 and Y = 392,080.00; thence West 15,750.75 feet to a point having Coordinates of X = 2,323,525.00 and Y = 392,080.00; thence North 12,570.00 feet to a point having Coordinates of X = 2,323,525.00 and Y = 404,650.00; thence East 18,480.00 feet to the point of beginning, **LESS AND EXCEPT** all that portion of Salvador Wildlife Management Area that lies within the above described tract, containing approximately **2,498 acres**, all as more particularly outlined on a plat on file in the Office of Mineral Resources, Department of Natural Resources. All bearings, distances and coordinates are based on Louisiana Coordinate System of 1927, (North or South Zone), where applicable.

NOTE: The above description of the Tract nominated for lease has been provided and corrected, where required, exclusively by the nomination party. Any mineral lease selected from this Tract and awarded by the Louisiana State Mineral Board shall be without warranty of any kind, either express, implied, or statutory, including, but not limited to, the implied warranties of merchantability and fitness for a particular purpose. Should the mineral lease awarded by the Louisiana State Mineral Board be subsequently modified, cancelled or abrogated due to the existence of conflicting leases, operating agreements, private claims or other future obligations or conditions which may affect all or any portion of the leased Tract, it shall not relieve the Lessee of the obligation to pay any bonus due thereon to the Louisiana State Mineral Board, nor shall the Louisiana State Mineral Board be obligated to refund any consideration paid by the Lessor prior to such modification, cancellation, or abrogation, including, but not limited to, bonuses, rentals and royalties.

NOTE: The State of Louisiana does hereby reserve, and this lease shall be subject to, the imprescriptible right of surface use in the nature of a servitude in favor of the Department of Natural Resources, including its Offices and Commissions, for the sole purpose of implementing, constructing, servicing and maintaining approved coastal zone management and/or restoration projects. Utilization of any and all rights derived under this lease by the mineral lessee, its agents, successors or assigns, shall not interfere with nor hinder the reasonable surface use by the Department of Natural Resources, its Offices or Commissions, as herein above reserved.

Applicant: Taylex, Inc.

Bidder	Cash Payment	Price/Acre	Rental	Oil	Gas	Other



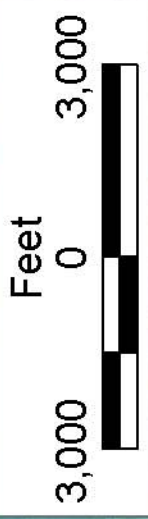


T15S - R22E

P.O.B.  
X=2,342,005.00  
Y=404,650.00

ST CHARLES PARISH

T15S - R21E



LAKE SALVADOR