

TRACT 37482 - St. Martin and St. Mary Parishes, Louisiana

All lands now or formerly constituting the beds and bottoms of water bodies of whatever description and nature owned by the State of Louisiana and located within the geographical boundaries of the Attakapas WMA and not presently under mineral lease by the State of Louisiana as of June 8, 2005, the area being set forth as follows: Beginning at the Northeast corner of State Lease No. 14912 having Coordinates of X = 1,956,000.00 and Y = 467,200.00; thence East 11,654.00 feet to a point having Coordinates of X = 1,967,654.00 and Y = 467,200.00; thence South 13,615.68 feet to a point having Coordinates of X = 1,967,654.00 and Y = 453,584.32; thence West 4,579.51 feet to the Southeast corner of State Lease No. 16310, as amended having Coordinates of X = 1,963,074.49 and Y = 453,584.32; thence North 15.68 feet on the East line of said State Lease No. 16310 to its Northeast corner also being the Southeast corner of State Lease No. 14916 having Coordinates of X = 1,963,074.49 and Y = 453,600.00; thence North 2,069.56 feet on the East line of said State Lease No. 14916 to its Northeast corner also being the Southeast corner of State Lease No. 14522 having Coordinates of X = 1,963,074.49 and Y = 455,669.56; thence North 1,051.43 feet on the East line of said State Lease No. 14522 to its Northeast corner also being the Southeast corner of State Lease No. 14521 having Coordinates of X = 1,963,074.49 and Y = 456,720.99; thence along the boundary of said State Lease No. 14521 the following courses: North 3,900.00 feet and West 7,074.49 feet to the Southeast corner of said State Lease No. 14912 having Coordinates of X = 1,956,000.00 and Y = 460,620.99; thence North 6,579.01 feet on the East line of said State Lease No. 14912 to the point of beginning, **LESS AND EXCEPT** any portion lying outside of the boundaries of the Attakapas Island Wildlife Management Area, containing approximately **2,499.91 acres**, all as more particularly outlined on a plat on file in the Office of Mineral Resources, Department of Natural Resources. All bearings, distances and coordinates are based on Louisiana Coordinate System of 1927, (North or South Zone).

NOTE: The above description of the Tract nominated for lease has been provided and corrected, where required, exclusively by the nomination party. Any mineral lease selected from this Tract and awarded by the Louisiana State Mineral Board shall be without warranty of any kind, either express, implied, or statutory, including, but not limited to, the implied warranties of merchantability and fitness for a particular purpose. Should the mineral lease awarded by the Louisiana State Mineral Board be subsequently modified, cancelled or abrogated due to the existence of conflicting leases, operating agreements, private claims or other future obligations or conditions which may affect all or any portion of the leased Tract, it shall not relieve the Lessee of the obligation to pay any bonus due thereon to the Louisiana State Mineral Board, nor shall the Louisiana State Mineral Board be obligated to refund any consideration paid by the Lessor prior to such modification, cancellation, or abrogation, including, but not limited to, bonuses, rentals and royalties.

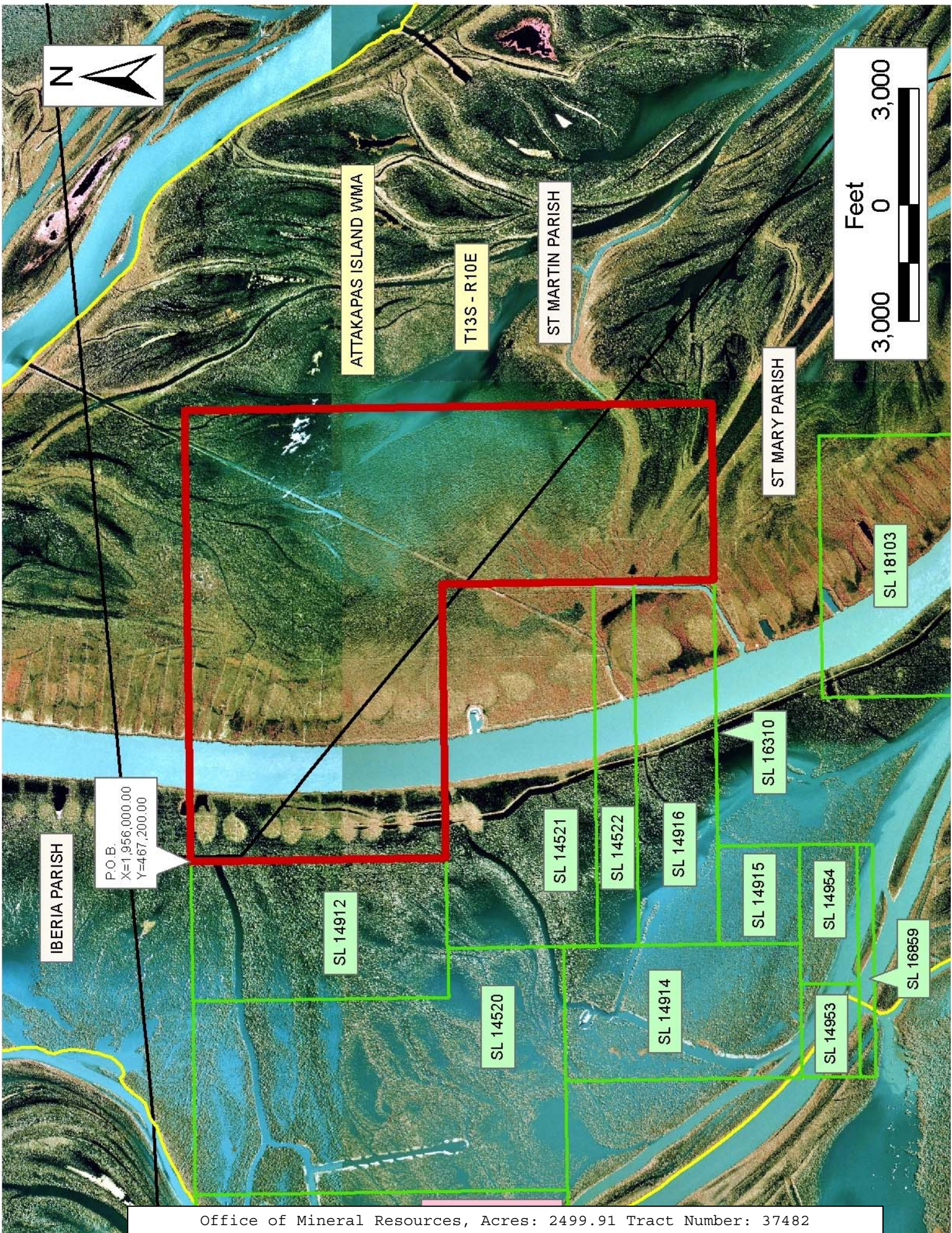
NOTE: This tract is located within the boundaries of a wildlife management area or refuge and any operations conducted thereon in conjunction with this mineral lease may be subject to rules and regulations promulgated by the Department of Wildlife and Fisheries for the protection of fish, birds and other wildlife including, but not necessarily limited to, the following:

1. No activities will be allowed without written authorization from the Louisiana Department of Wildlife and Fisheries. All projects will be coordinated and approved by the appropriate WMA Supervisor prior to any activities on the wildlife management area.
2. Proposed projects will be evaluated on a case by case basis. Modifications to proposed projects may be required including, but not limited to, access routes, spoil placement, well sites, flow lines and other appurtenant structures required by the Louisiana Department of Wildlife and Fisheries.
3. Compensatory mitigation will be required to offset unavoidable wetland impacts.
4. Removal of all structures, facilities, and equipment will be required within 120 days of abandonment unless otherwise agreed to by the Department of Wildlife and Fisheries.
5. No activities will be allowed during the hunting season unless approved by the Department.
6. Compliance with the said WMA regulations will be required unless otherwise specified by the Department.
7. Prior to submitting applications for wetland permits to Federal and State permitting agencies the lease holder shall coordinate project details with the Louisiana Department of Wildlife and Fisheries, Fur and Refuge Division. Contact person for the Department will be Mike Windham at (504) 568-5886.

NOTE: The State of Louisiana does hereby reserve, and this lease shall be subject to, the imprescriptible right of surface use in the nature of a servitude in favor of the Department of Natural Resources, including its Offices and Commissions, for the sole purpose of implementing, constructing, servicing and maintaining approved coastal zone management and/or restoration projects. Utilization of any and all rights derived under this lease by the mineral lessee, its agents, successors or assigns, shall not interfere with nor hinder the reasonable surface use by the Department of Natural Resources, its Offices or Commissions, as herein above reserved.

Applicant: Rickey T. Matherne, Jr.

Bidder	Cash Payment	Price/ Acre	Rental	Oil	Gas	Other



TRACT 37483 - St. Mary Parish, Louisiana

All lands now or formerly constituting the beds and bottoms of water bodies of whatever description and nature owned by the State of Louisiana and located within the geographical boundaries of the Attakapas WMA and not presently under mineral lease by the State of Louisiana as of June 8, 2005, the area being set forth as follows: Beginning at a point having Coordinates of X = 1,942,852.00 and Y = 443,572.00; thence North 14,028.86 feet to a point on the South line of State Lease No. 14519 having Coordinates of X = 1,942,852.00 and Y = 457,600.86; thence East 4,533.00 feet on the South line of said State Lease No. 14519 to its Southeast corner, also being the Southwest corner of State Lease No. 14520 having Coordinates of X = 1,947,385.00 and Y = 457,600.86; thence East 2,815.00 feet on the South line of said State Lease No. 14520 to the Northwest corner of State Lease No. 14914, as amended having Coordinates of X = 1,950,200.00 and Y = 457,600.86; thence South 6,100.86 feet on the West line of said State Lease No. 14914 to its Southwest corner, also being the Northwest corner of State Lease No. 14953, as amended having Coordinates of X = 1,950,200.00 and Y = 451,500.00; thence South 1,500.00 feet on the West line of said State Lease No. 14953 to its Southwest corner also being the Northwest corner of State Lease No. 16859, as amended having Coordinates of X = 1,950,200.00 and Y = 450,000.00; thence along the boundary of said State Lease No. 16859 the following courses: South 400.00 feet and East 6,000.00 feet to its Southeast corner having Coordinates of X = 1,956,200.00 and Y = 449,600.00; thence South 6,028.00 feet to a point having Coordinates of X = 1,956,200.00 and Y = 443,572.00; thence West 13,348.00 feet to the point of beginning, **LESS AND EXCEPT** any portion lying outside of the boundaries of the Attakapas Island Wildlife Management Area, containing approximately **639 acres**, all as more particularly outlined on a plat on file in the Office of Mineral Resources, Department of Natural Resources. All bearings, distances and coordinates are based on Louisiana Coordinate System of 1927, (North or South Zone).

NOTE: The above description of the Tract nominated for lease has been provided and corrected, where required, exclusively by the nomination party. Any mineral lease selected from this Tract and awarded by the Louisiana State Mineral Board shall be without warranty of any kind, either express, implied, or statutory, including, but not limited to, the implied warranties of merchantability and fitness for a particular purpose. Should the mineral lease awarded by the Louisiana State Mineral Board be subsequently modified, cancelled or abrogated due to the existence of conflicting leases, operating agreements, private claims or other future obligations or conditions which may affect all or any portion of the leased Tract, it shall not relieve the Lessee of the obligation to pay any bonus due thereon to the Louisiana State Mineral Board, nor shall the Louisiana State Mineral Board be obligated to refund any consideration paid by the Lessor prior to such modification, cancellation, or abrogation, including, but not limited to, bonuses, rentals and royalties.

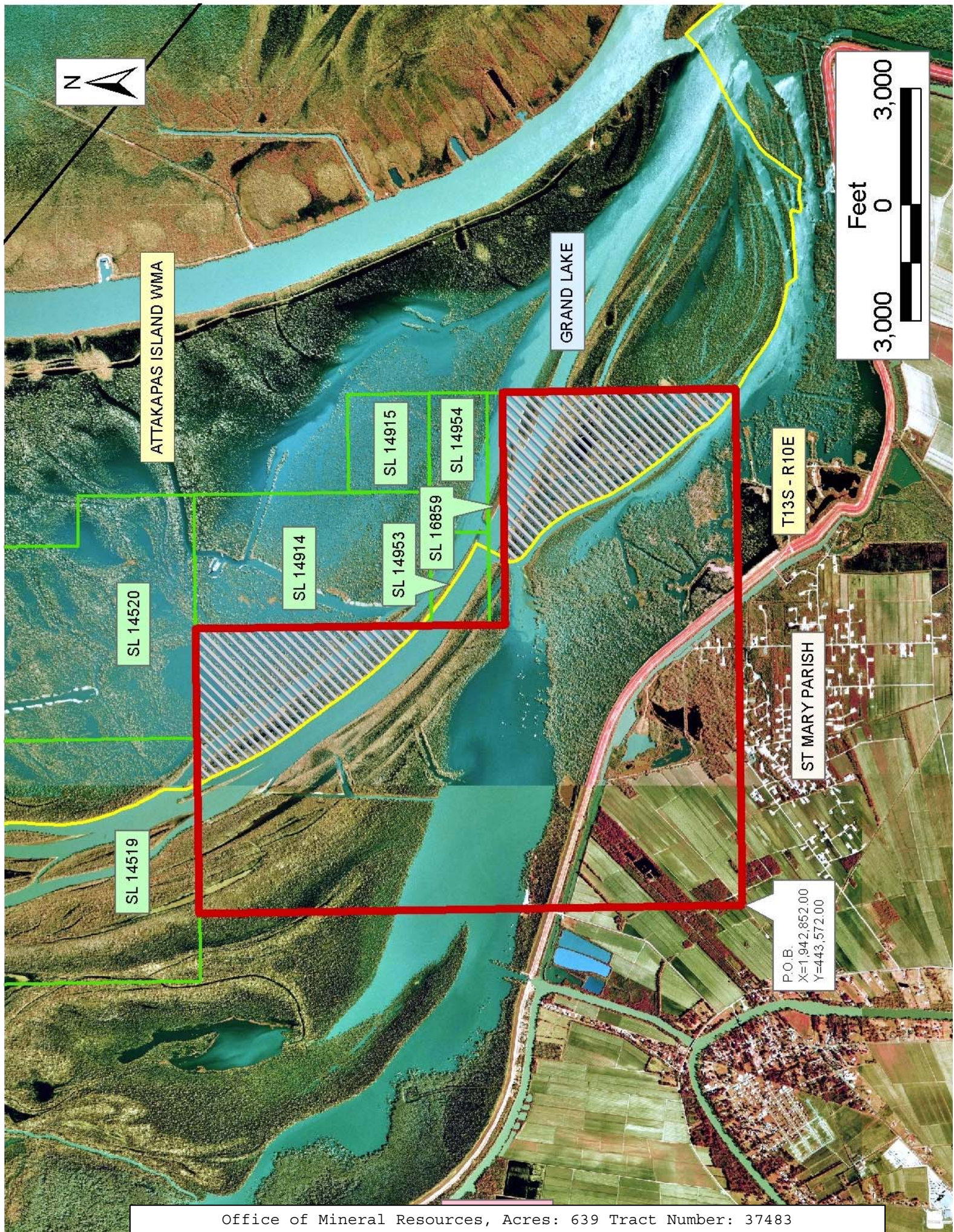
NOTE: This tract is located within the boundaries of a wildlife management area or refuge and any operations conducted thereon in conjunction with this mineral lease may be subject to rules and regulations promulgated by the Department of Wildlife and Fisheries for the protection of fish, birds and other wildlife including, but not necessarily limited to, the following:

1. No activities will be allowed without written authorization from the Louisiana Department of Wildlife and Fisheries. All projects will be coordinated and approved by the appropriate WMA Supervisor prior to any activities on the wildlife management area.
2. Proposed projects will be evaluated on a case by case basis. Modifications to proposed projects may be required including, but not limited to, access routes, spoil placement, well sites, flow lines and other appurtenant structures required by the Louisiana Department of Wildlife and Fisheries.
3. Compensatory mitigation will be required to offset unavoidable wetland impacts.
4. Removal of all structures, facilities, and equipment will be required within 120 days of abandonment unless otherwise agreed to by the Department of Wildlife and Fisheries.
5. No activities will be allowed during the hunting season unless approved by the Department.
6. Compliance with the said WMA regulations will be required unless otherwise specified by the Department.
7. Prior to submitting applications for wetland permits to Federal and State permitting agencies the lease holder shall coordinate project details with the Louisiana Department of Wildlife and Fisheries, Fur and Refuge Division. Contact person for the Department will be Mike Windham at (504) 568-5886.

NOTE: The State of Louisiana does hereby reserve, and this lease shall be subject to, the imprescriptible right of surface use in the nature of a servitude in favor of the Department of Natural Resources, including its Offices and Commissions, for the sole purpose of implementing, constructing, servicing and maintaining approved coastal zone management and/or restoration projects. Utilization of any and all rights derived under this lease by the mineral lessee, its agents, successors or assigns, shall not interfere with nor hinder the reasonable surface use by the Department of Natural Resources, its Offices or Commissions, as herein above reserved.

Applicant: Rickey T. Matherne, Jr.

Bidder	Cash Payment	Price/ Acre	Rental	Oil	Gas	Other



TRACT 37484 - St. Mary Parish, Louisiana

All lands now or formerly constituting the beds and bottoms of water bodies of whatever description and nature owned by the State of Louisiana and located within the geographical boundaries of the Attakapas WMA and not presently under mineral lease by the State of Louisiana as of June 8, 2005, the area being set forth as follows: Beginning at a point having Coordinates of X = 1,966,744.26 and Y = 453,584.32; thence South 2,749.32 feet to the Northeast corner of State Lease No 18103 having Coordinates of X = 1,966,744.26 and Y = 450,835.00; thence along the boundary of said State Lease No. 18103 the following courses: West 6,744.26 feet, South 5,261.89 feet, East 5,410.26 feet, North 426.89 feet, and East 1,334.00 feet to its Southeast corner having Coordinates of X = 1,966,744.26 and Y = 446,000.00; thence South 2,428.00 feet to a point having Coordinates of X = 1,966,744.26 and Y = 443,572.00; thence West 10,544.26 feet to a point having Coordinates of X = 1,956,200.00 and Y = 443,572.00; thence North 6,028.00 feet to the Southeast corner of State Lease No. 16859 as amended having Coordinates of X = 1,956,200.00 and Y = 449,600.00; thence North 400.00 feet on the East line of said State Lease No. 16859 to its Northeast corner also being the Southeast corner of State Lease No. 14954 as amended having Coordinates of X = 1,956,200.00 and Y = 450,000.00; thence North 1,500.00 feet on the East line of said State Lease No. 14954 to its Northeast corner also being the Southeast corner of State Lease No. 14915 as amended having Coordinates of X = 1,956,200.00 and Y = 451,500.00; thence North 2,084.32 feet on the East line of said State Lease No. 14915 to its Northeast corner also being a point on the South line of State Lease No. 16310 as amended having Coordinates of X = 1,956,200.00 and Y = 453,584.32; thence East 6,874.49 feet on the South line of said State Lease No. 16310 to its Southeast corner having Coordinates of X = 1,963,074.49 and Y = 453,584.32; thence East 3,669.77 feet to the point of beginning, **LESS AND EXCEPT** any portion lying outside of the boundaries of the Attakapas Island Wildlife Management Area, containing approximately **1,578 acres**, all as more particularly outlined on a plat on file in the Office of Mineral Resources, Department of Natural Resources. All bearings, distances and coordinates are based on Louisiana Coordinate System of 1927, (North or South Zone).

NOTE: The above description of the Tract nominated for lease has been provided and corrected, where required, exclusively by the nomination party. Any mineral lease selected from this Tract and awarded by the Louisiana State Mineral Board shall be without warranty of any kind, either express, implied, or statutory, including, but not limited to, the implied warranties of merchantability and fitness for a particular purpose. Should the mineral lease awarded by the Louisiana State Mineral Board be subsequently modified, cancelled or abrogated due to the existence of conflicting leases, operating agreements, private claims or other future obligations or conditions which may affect all or any portion of the leased Tract, it shall not relieve the Lessee of the obligation to pay any bonus due thereon to the Louisiana State Mineral Board, nor shall the Louisiana State Mineral Board be obligated to refund any consideration

paid by the Lessor prior to such modification, cancellation, or abrogation, including, but not limited to, bonuses, rentals and royalties.

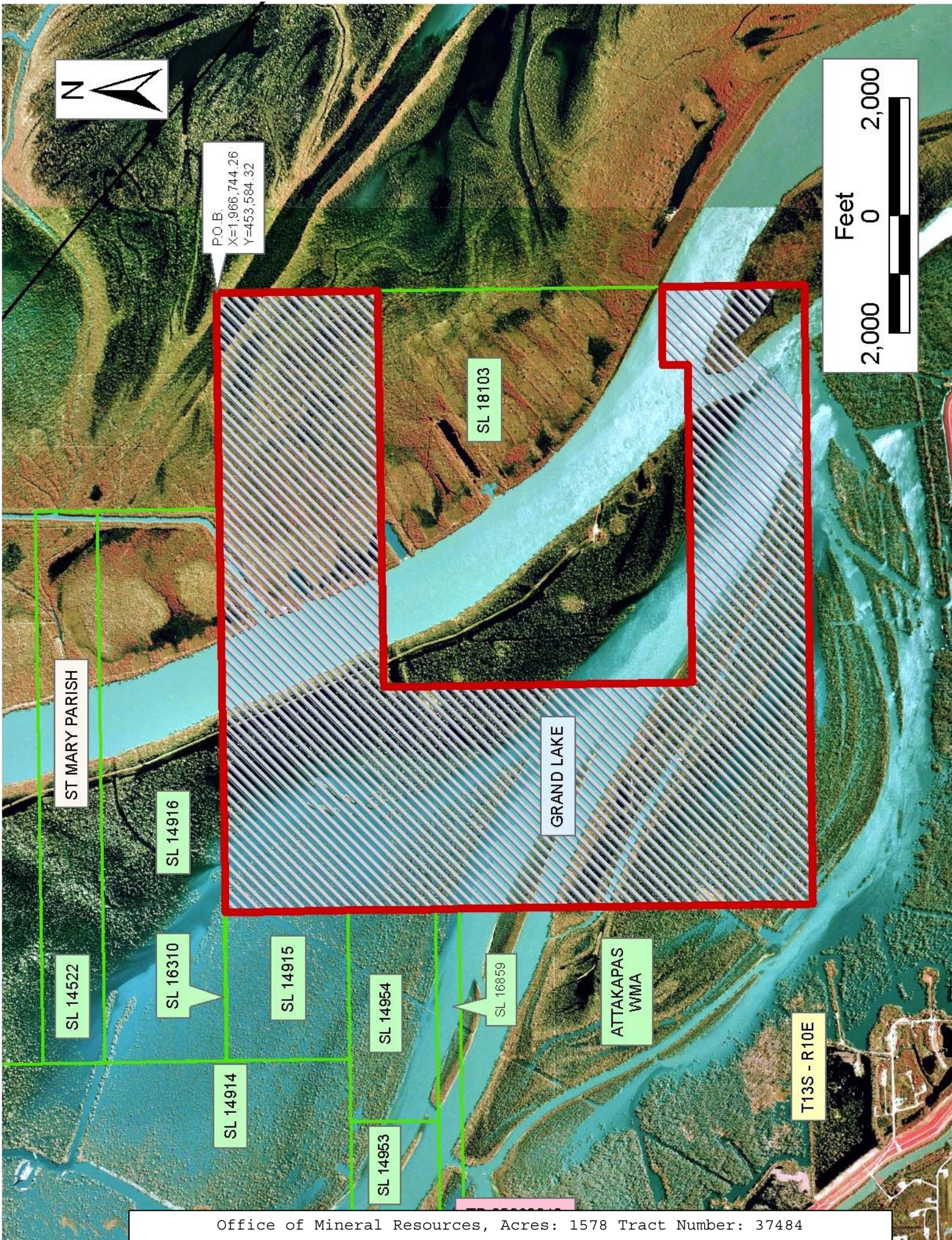
NOTE: This tract is located within the boundaries of a wildlife management area or refuge and any operations conducted thereon in conjunction with this mineral lease may be subject to rules and regulations promulgated by the Department of Wildlife and Fisheries for the protection of fish, birds and other wildlife including, but not necessarily limited to, the following:

1. No activities will be allowed without written authorization from the Louisiana Department of Wildlife and Fisheries. All projects will be coordinated and approved by the appropriate WMA Supervisor prior to any activities on the wildlife management area.
2. Proposed projects will be evaluated on a case by case basis. Modifications to proposed projects may be required including, but not limited to, access routes, spoil placement, well sites, flow lines and other appurtenant structures required by the Louisiana Department of Wildlife and Fisheries.
3. Compensatory mitigation will be required to offset unavoidable wetland impacts.
4. Removal of all structures, facilities, and equipment will be required within 120 days of abandonment unless otherwise agreed to by the Department of Wildlife and Fisheries.
5. No activities will be allowed during the hunting season unless approved by the Department.
6. Compliance with the said WMA regulations will be required unless otherwise specified by the Department.
7. Prior to submitting applications for wetland permits to Federal and State permitting agencies the lease holder shall coordinate project details with the Louisiana Department of Wildlife and Fisheries, Fur and Refuge Division. Contact person for the Department will be Mike Windham at (504) 568-5886.

NOTE: The State of Louisiana does hereby reserve, and this lease shall be subject to, the imprescriptible right of surface use in the nature of a servitude in favor of the Department of Natural Resources, including its Offices and Commissions, for the sole purpose of implementing, constructing, servicing and maintaining approved coastal zone management and/or restoration projects. Utilization of any and all rights derived under this lease by the mineral lessee, its agents, successors or assigns, shall not interfere with nor hinder the reasonable surface use by the Department of Natural Resources, its Offices or Commissions, as herein above reserved.

Applicant: Rickey T. Matherne, Jr.

Bidder	Cash Payment	Price/ Acre	Rental	Oil	Gas	Other



TRACT 37485 - St. Martin and St. Mary Parishes, Louisiana

All lands now or formerly constituting the beds and bottoms of water bodies of whatever description and nature owned by the State of Louisiana and located within the geographical boundaries of the Attakapas WMA and not presently under mineral lease by the State of Louisiana as of June 8, 2005, the area being set forth as follows: Beginning at a point having Coordinates of X = 1,966,744.26 and Y = 453,584.32; thence East 10,971.74 feet to a point having Coordinates of X = 1,977,716.00 and Y = 453,584.32; thence South 10,012.32 feet to a point having Coordinates of X = 1,977,716.00 and Y = 443,572.00; thence West 10,971.74 feet to a point having Coordinates of X = 1,966,744.26 and Y = 443,572.00; thence North 2,428.00 feet to the Southeast corner of State Lease No. 18103 having Coordinates of X = 1,966,744.26 and Y = 446,000.00; thence North 4,835.00 feet on the East line of said State Lease No. 18103 to its Northeast corner having Coordinates of X = 1,966,744.26 and Y = 450,835.00; thence North 2,749.32 feet to the point of beginning, **LESS AND EXCEPT** any portion lying outside of the boundaries of the Attakapas Island Wildlife Management Area, containing approximately **2,500 acres**, all as more particularly outlined on a plat on file in the Office of Mineral Resources, Department of Natural Resources. All bearings, distances and coordinates are based on Louisiana Coordinate System of 1927, (North or South Zone).

NOTE: The above description of the Tract nominated for lease has been provided and corrected, where required, exclusively by the nomination party. Any mineral lease selected from this Tract and awarded by the Louisiana State Mineral Board shall be without warranty of any kind, either express, implied, or statutory, including, but not limited to, the implied warranties of merchantability and fitness for a particular purpose. Should the mineral lease awarded by the Louisiana State Mineral Board be subsequently modified, cancelled or abrogated due to the existence of conflicting leases, operating agreements, private claims or other future obligations or conditions which may affect all or any portion of the leased Tract, it shall not relieve the Lessee of the obligation to pay any bonus due thereon to the Louisiana State Mineral Board, nor shall the Louisiana State Mineral Board be obligated to refund any consideration paid by the Lessor prior to such modification, cancellation, or abrogation, including, but not limited to, bonuses, rentals and royalties.

NOTE: This tract is located within the boundaries of a wildlife management area or refuge and any operations conducted thereon in conjunction with this mineral lease may be subject to rules and regulations promulgated by the Department of Wildlife and Fisheries for the protection of fish, birds and other wildlife including, but not necessarily limited to, the following:

1. No activities will be allowed without written authorization from the Louisiana Department of Wildlife and Fisheries. All projects will be coordinated and approved by the appropriate WMA Supervisor prior to any activities on the wildlife management area.

2. Proposed projects will be evaluated on a case by case basis. Modifications to proposed projects may be required including, but not limited to, access routes, spoil placement, well sites, flow lines and other appurtenant structures required by the Louisiana Department of Wildlife and Fisheries.

3. Compensatory mitigation will be required to offset unavoidable wetland impacts.

4. Removal of all structures, facilities, and equipment will be required within 120 days of abandonment unless otherwise agreed to by the Department of Wildlife and Fisheries.

5. No activities will be allowed during the hunting season unless approved by the Department.

6. Compliance with the said WMA regulations will be required unless otherwise specified by the Department.

7. Prior to submitting applications for wetland permits to Federal and State permitting agencies the lease holder shall coordinate project details with the Louisiana Department of Wildlife and Fisheries, Fur and Refuge Division. Contact person for the Department will be Mike Windham at (504) 568-5886.

NOTE: The State of Louisiana does hereby reserve, and this lease shall be subject to, the imprescriptible right of surface use in the nature of a servitude in favor of the Department of Natural Resources, including its Offices and Commissions, for the sole purpose of implementing, constructing, servicing and maintaining approved coastal zone management and/or restoration projects. Utilization of any and all rights derived under this lease by the mineral lessee, its agents, successors or assigns, shall not interfere with nor hinder the reasonable surface use by the Department of Natural Resources, its Offices or Commissions, as herein above reserved.

Applicant: Rickey T. Matherne, Jr.

Bidder	Cash Payment	Price/Acre	Rental	Oil	Gas	Other

